

EC-Council

Exam Questions 312-49v10

Computer Hacking Forensic Investigator (CHFI-v10)



NEW QUESTION 1

- (Exam Topic 1)

It takes mismanaged case/s to ruin your professional reputation as a computer forensics examiner?

- A. by law, three
- B. quite a few
- C. only one
- D. at least two

Answer: C

NEW QUESTION 2

- (Exam Topic 1)

George is performing security analysis for Hammond and Sons LLC. He is testing security vulnerabilities of their wireless network. He plans on remaining as "stealthy" as possible during the scan. Why would a scanner like Nessus is not recommended in this situation?

- A. Nessus is too loud
- B. Nessus cannot perform wireless testing
- C. Nessus is not a network scanner
- D. There are no ways of performing a "stealthy" wireless scan

Answer: A

NEW QUESTION 3

- (Exam Topic 1)

Chris has been called upon to investigate a hacking incident reported by one of his clients. The company suspects the involvement of an insider accomplice in the attack. Upon reaching the incident scene, Chris secures the physical area, records the scene using visual media. He shuts the system down by pulling the power plug so that he does not disturb the system in any way. He labels all cables and connectors prior to disconnecting any. What do you think would be the next sequence of events?

- A. Connect the target media; prepare the system for acquisition; Secure the evidence; Copy the media
- B. Prepare the system for acquisition; Connect the target media; copy the media; Secure the evidence
- C. Connect the target media; Prepare the system for acquisition; Secure the evidence; Copy the media
- D. Secure the evidence; prepare the system for acquisition; Connect the target media; copy the media

Answer: B

NEW QUESTION 4

- (Exam Topic 1)

What type of attack occurs when an attacker can force a router to stop forwarding packets by flooding the router with many open connections simultaneously so that all the hosts behind the router are effectively disabled?

- A. digital attack
- B. denial of service
- C. physical attack
- D. ARP redirect

Answer: B

NEW QUESTION 5

- (Exam Topic 1)

The objective of this act was to protect consumers' personal financial information held by financial institutions and their service providers.

- A. Gramm-Leach-Bliley Act
- B. Sarbanes-Oxley 2002
- C. California SB 1386
- D. HIPAA

Answer: A

NEW QUESTION 6

- (Exam Topic 1)

When you are running a vulnerability scan on a network and the IDS cuts off your connection, what type of IDS is being used?

- A. Passive IDS
- B. Active IDS
- C. Progressive IDS
- D. NIPS

Answer: B

NEW QUESTION 7

- (Exam Topic 1)

The following excerpt is taken from a honeypot log. The log captures activities across three days. There are several intrusion attempts; however, a few are successful.

(Note: The objective of this question is to test whether the student can read basic information from log entries and interpret the nature of attack.)

Apr 24 14:46:46 [4663]: spp_portscan: portscan detected from 194.222.156.169
Apr 24 14:46:46 [4663]: IDS27/FIN Scan: 194.222.156.169:56693 -> 172.16.1.107:482
Apr 24 18:01:05 [4663]: IDS/DNS-version-query: 212.244.97.121:3485 -> 172.16.1.107:53
Apr 24 19:04:01 [4663]: IDS213/ftp-passwd-retrieval: 194.222.156.169:1425 -> 172.16.1.107:21
Apr 25 08:02:41 [5875]: spp_portscan: PORTSCAN DETECTED from 24.9.255.53
Apr 25 02:08:07 [5875]: IDS277/DNS-version-query: 63.226.81.13:4499 -> 172.16.1.107:53
Apr 25 02:08:07 [5875]: IDS277/DNS-version-query: 63.226.81.13:4630 -> 172.16.1.101:53
Apr 25 02:38:17 [5875]: IDS/RPC-rpcinfo-query: 212.251.1.94:642 -> 172.16.1.107:111
Apr 25 19:37:32 [5875]: IDS230/web-cgi-space-wildcard: 198.173.35.164:4221 -> 172.16.1.107:80
Apr 26 05:45:12 [6283]: IDS212/dns-zone-transfer: 38.31.107.87:2291 -> 172.16.1.101:53
Apr 26 06:43:05 [6283]: IDS181/nops-x86: 63.226.81.13:1351 -> 172.16.1.107:53
Apr 26 06:44:25 victim7 PAM_pwd[12509]: (login) session opened for user simple by (uid=0)
Apr 26 06:44:36 victim7 PAM_pwd[12521]: (su) session opened for user simon by simple(uid=506) Apr 26 06:45:34 [6283]: IDS175/socks-probe: 24.112.167.35:20 -> 172.16.1.107:1080
Apr 26 06:52:10 [6283]: IDS127/telnet-login-incorrect: 172.16.1.107:23 -> 213.28.22.189:4558
From the options given below choose the one which best interprets the following entry: Apr 26 06:43:05 [6283]: IDS181/nops-x86: 63.226.81.13:1351 -> 172.16.1.107:53

- A. An IDS evasion technique
- B. A buffer overflow attempt
- C. A DNS zone transfer
- D. Data being retrieved from 63.226.81.13

Answer: A

NEW QUESTION 8

- (Exam Topic 1)

An employee is attempting to wipe out data stored on a couple of compact discs (CDs) and digital video discs (DVDs) by using a large magnet. You inform him that this method will not be effective in wiping out the data because CDs and DVDs are media used to store large amounts of data and are not affected by the magnet.

- A. logical
- B. anti-magnetic
- C. magnetic
- D. optical

Answer: D

NEW QUESTION 9

- (Exam Topic 1)

You are working as a Computer forensics investigator for a corporation on a computer abuse case. You discover evidence that shows the subject of your investigation is also embezzling money from the company. The company CEO and the corporate legal counsel advise you to contact law enforcement and provide them with the evidence that you have found. The law enforcement officer that responds requests that you put a network sniffer on your network and monitor all traffic to the subject's computer. You inform the officer that you will not be able to comply with that request because doing so would:

- A. Violate your contract
- B. Cause network congestion
- C. Make you an agent of law enforcement
- D. Write information to the subject's hard drive

Answer: C

NEW QUESTION 10

- (Exam Topic 1)

When reviewing web logs, you see an entry for resource not found in the HTTP status code field. What is the actual error code that you would see in the log for resource not found?

- A. 202
- B. 404
- C. 505
- D. 909

Answer: B

NEW QUESTION 10

- (Exam Topic 1)

What TCP/UDP port does the toolkit program netstat use?

- A. Port 7
- B. Port 15
- C. Port 23
- D. Port 69

Answer: B

NEW QUESTION 14

- (Exam Topic 1)

If you discover a criminal act while investigating a corporate policy abuse, it becomes a publicsector investigation and should be referred to law enforcement?

- A. true
- B. false

Answer: A

NEW QUESTION 15

- (Exam Topic 1)

You have been asked to investigate after a user has reported a threatening e-mail they have received from an external source. Which of the following are you most interested in when trying to trace the source of the message?

- A. The X509 Address
- B. The SMTP reply Address
- C. The E-mail Header
- D. The Host Domain Name

Answer: C

NEW QUESTION 19

- (Exam Topic 1)

Paul's company is in the process of undergoing a complete security audit including logical and physical security testing. After all logical tests were performed; it is now time for the physical round to begin. None of the employees are made aware of this round of testing. The security-auditing firm sends in a technician dressed as an electrician. He waits outside in the lobby for some employees to get to work and follows behind them when they access the restricted areas. After entering the main office, he is able to get into the server room telling the IT manager that there is a problem with the outlets in that room. What type of attack has the technician performed?

- A. Tailgating
- B. Backtrapping
- C. Man trap attack
- D. Fuzzing

Answer: A

NEW QUESTION 23

- (Exam Topic 2)

How many times can data be written to a DVD+R disk?

- A. Twice
- B. Once
- C. Zero
- D. Infinite

Answer: B

NEW QUESTION 26

- (Exam Topic 2)

What technique is used by JPEGs for compression?

- A. ZIP
- B. TCD
- C. DCT
- D. TIFF-8

Answer: C

NEW QUESTION 27

- (Exam Topic 2)

John is working as a computer forensics investigator for a consulting firm in Canada. He is called to seize a computer at a local web caf purportedly used as a botnet server. John thoroughly scans the computer and finds nothing that would lead him to think the computer was a botnet server. John decides to scan the virtual memory of the computer to possibly find something he had missed. What information will the virtual memory scan produce?

- A. It contains the times and dates of when the system was last patched
- B. It is not necessary to scan the virtual memory of a computer
- C. It contains the times and dates of all the system files
- D. Hidden running processes

Answer: D

NEW QUESTION 32

- (Exam Topic 2)

Steven has been given the task of designing a computer forensics lab for the company he works for. He has found documentation on all aspects of how to design a lab except the number of exits needed. How many exits should Steven include in his design for the computer forensics lab?

- A. Three
- B. One
- C. Two
- D. Four

Answer: B

NEW QUESTION 33

- (Exam Topic 2)

Amber, a black hat hacker, has embedded a malware into a small enticing advertisement and posted it on a popular ad-network that displays across various websites. What is she doing?

- A. Click-jacking
- B. Compromising a legitimate site
- C. Spearphishing
- D. Malvertising

Answer: D

NEW QUESTION 36

- (Exam Topic 1)

From the following spam mail header, identify the host IP that sent this spam? From jie02@netvigator.com jie02@netvigator.com Tue Nov 27 17:27:11 2001
Received: from viruswall.ie.cuhk.edu.hk (viruswall [137.189.96.52]) by eng.ie.cuhk.edu.hk (8.11.6/8.11.6) with ESMTP id fAR9RAP23061 for ; Tue, 27 Nov 2001 17:27:10 +0800 (HKT)
Received: from mydomain.com (pcd249020.netvigator.com [203.218.39.20]) by viruswall.ie.cuhk.edu.hk (8.12.1/8.12.1) with SMTP id fAR9QXwZ018431 for ; Tue, 27 Nov 2001 17:26:36 +0800 (HKT)
Message-Id: >200111270926.fAR9QXwZ018431@viruswall.ie.cuhk.edu.hk From: "china hotel web"
To: "Shlam"
Subject: SHANGHAI (HILTON HOTEL) PACKAGE
Date: Tue, 27 Nov 2001 17:25:58 +0800 MIME-Version: 1.0
X- Priority: 3 X-MSMail- Priority: Normal
Reply-To: "china hotel web"

- A. 137.189.96.52
- B. 8.12.1.0
- C. 203.218.39.20
- D. 203.218.39.50

Answer: C

NEW QUESTION 40

- (Exam Topic 2)

Which of the following is a record of the characteristics of a file system, including its size, the block size, the empty and the filled blocks and their respective counts, the size and location of the inode tables, the disk block map and usage information, and the size of the block groups?

- A. Inode bitmap block
- B. Superblock
- C. Block bitmap block
- D. Data block

Answer: B

NEW QUESTION 42

- (Exam Topic 1)

What binary coding is used most often for e-mail purposes?

- A. MIME
- B. Uuencode
- C. IMAP
- D. SMTP

Answer: A

NEW QUESTION 47

- (Exam Topic 1)

Lance wants to place a honeypot on his network. Which of the following would be your recommendations?

- A. Use a system that has a dynamic addressing on the network
- B. Use a system that is not directly interacting with the router
- C. Use it on a system in an external DMZ in front of the firewall
- D. It doesn't matter as all replies are faked

Answer: D

NEW QUESTION 49

- (Exam Topic 1)

After undergoing an external IT audit, George realizes his network is vulnerable to DDoS attacks. What countermeasures could he take to prevent DDoS attacks?

- A. Enable direct broadcasts
- B. Disable direct broadcasts
- C. Disable BGP
- D. Enable BGP

Answer: B

NEW QUESTION 50

- (Exam Topic 1)

What does ICMP Type 3/Code 13 mean?

- A. Host Unreachable
- B. Administratively Blocked
- C. Port Unreachable
- D. Protocol Unreachable

Answer: B

NEW QUESTION 53

- (Exam Topic 1)

What term is used to describe a cryptographic technique for embedding information into something else for the sole purpose of hiding that information from the casual observer?

- A. rootkit
- B. key escrow
- C. steganography
- D. Offset

Answer: C

NEW QUESTION 58

- (Exam Topic 1)

When investigating a network that uses DHCP to assign IP addresses, where would you look to determine which system (MAC address) had a specific IP address at a specific time?

- A. on the individual computer's ARP cache
- B. in the Web Server log files
- C. in the DHCP Server log files
- D. there is no way to determine the specific IP address

Answer: C

NEW QUESTION 63

- (Exam Topic 1)

The use of warning banners helps a company avoid litigation by overcoming an employee assumed _____. When connecting to the company's intranet, network or Virtual Private Network(VPN) and will allow the company's investigators to monitor, search and retrieve information stored within the network.

- A. Right to work
- B. Right of free speech
- C. Right to Internet Access
- D. Right of Privacy

Answer: D

NEW QUESTION 65

- (Exam Topic 1)

When an investigator contacts by telephone the domain administrator or controller listed by a Who is lookup to request all e-mails sent and received for a user account be preserved, what U.S.C. statute authorizes this phone call and obligates the ISP to preserve e-mail records?

- A. Title 18, Section 1030
- B. Title 18, Section 2703(d)
- C. Title 18, Section Chapter 90
- D. Title 18, Section 2703(f)

Answer: D

NEW QUESTION 69

- (Exam Topic 1)

What information do you need to recover when searching a victim's computer for a crime committed with specific e-mail message?

- A. Internet service provider information
- B. E-mail header
- C. Username and password
- D. Firewall log

Answer: B

NEW QUESTION 74

- (Exam Topic 1)

Under which Federal Statutes does FBI investigate for computer crimes involving e-mail scams and mail fraud?

- A. 18 U.S.
- B. 1029 Possession of Access Devices
- C. 18 U.S.
- D. 1030 Fraud and related activity in connection with computers
- E. 18 U.S.
- F. 1343 Fraud by wire, radio or television
- G. 18 U.S.
- H. 1361 Injury to Government Property
- I. 18 U.S.
- J. 1362 Government communication systems
- K. 18 U.S.
- L. 1831 Economic Espionage Act
- M. 18 U.S.
- N. 1832 Trade Secrets Act

Answer: B

NEW QUESTION 79

- (Exam Topic 1)

If a suspect computer is located in an area that may have toxic chemicals, you must:

- A. coordinate with the HAZMAT team
- B. determine a way to obtain the suspect computer
- C. assume the suspect machine is contaminated
- D. do not enter alone

Answer: A

NEW QUESTION 84

- (Exam Topic 1)

You are running through a series of tests on your network to check for any security vulnerabilities.

After normal working hours, you initiate a DoS attack against your external firewall. The firewall Quickly freezes up and becomes unusable. You then initiate an FTP connection from an external IP into your internal network. The connection is successful even though you have FTP blocked at the external firewall. What has happened?

- A. The firewall failed-bypass
- B. The firewall failed-closed
- C. The firewall ACL has been purged
- D. The firewall failed-open

Answer: D

NEW QUESTION 87

- (Exam Topic 1)

When conducting computer forensic analysis, you must guard against So that you remain focused on the primary job and insure that the level of work does not increase beyond what was originally expected.

- A. Hard Drive Failure
- B. Scope Creep
- C. Unauthorized expenses
- D. Overzealous marketing

Answer: B

NEW QUESTION 88

- (Exam Topic 1)

When examining a hard disk without a write-blocker, you should not start windows because Windows will write data to the:

- A. Recycle Bin
- B. MSDOS.sys
- C. BIOS
- D. Case files

Answer: A

NEW QUESTION 93

- (Exam Topic 1)

What method of computer forensics will allow you to trace all ever-established user accounts on a Windows 2000 sever the course of its lifetime?

- A. forensic duplication of hard drive
- B. analysis of volatile data
- C. comparison of MD5 checksums
- D. review of SIDs in the Registry

Answer: C

NEW QUESTION 97

- (Exam Topic 1)

You should make at least how many bit-stream copies of a suspect drive?

- A. 1
- B. 2
- C. 3
- D. 4

Answer: B

NEW QUESTION 98

- (Exam Topic 1)

Jessica works as systems administrator for a large electronics firm. She wants to scan her network quickly to detect live hosts by using ICMP ECHO Requests. What type of scan is Jessica going to perform?

- A. Tracert
- B. Smurf scan
- C. Ping trace
- D. ICMP ping sweep

Answer: D

NEW QUESTION 99

- (Exam Topic 1)

George is the network administrator of a large Internet company on the west coast. Per corporate policy, none of the employees in the company are allowed to use FTP or SFTP programs without obtaining approval from the IT department. Few managers are using SFTP program on their computers. Before talking to his boss, George wants to have some proof of their activity. George wants to use Ethereal to monitor network traffic, but only SFTP traffic to and from his network. What filter should George use in Ethereal?

- A. src port 23 and dst port 23
- B. udp port 22 and host 172.16.28.1/24
- C. net port 22
- D. src port 22 and dst port 22

Answer: D

NEW QUESTION 101

- (Exam Topic 1)

What does the superblock in Linux define?

- A. filesynames
- B. diskgeometr
- C. location of the firstinode
- D. available space

Answer: C

NEW QUESTION 105

- (Exam Topic 1)

You are working in the security Department of law firm. One of the attorneys asks you about the topic of sending fake email because he has a client who has been charged with doing just that. His client alleges that he is innocent and that there is no way for a fake email to actually be sent. You inform the attorney that his client is mistaken and that fake email is possibility and that you can prove it. You return to your desk and craft a fake email to the attorney that appears to come from his boss. What port do you send the email to on the company SMTP server?

- A. 10
- B. 25
- C. 110
- D. 135

Answer: B

NEW QUESTION 107

- (Exam Topic 1)

_____ is simply the application of Computer Investigation and analysis techniques in the interests of determining potential legal evidence.

- A. Network Forensics
- B. Computer Forensics
- C. Incident Response
- D. Event Reaction

Answer: B

NEW QUESTION 109

- (Exam Topic 1)

Which of the following file system is used by Mac OS X?

- A. EFS

- B. HFS+
C. EXT2
D. NFS

Answer: B

NEW QUESTION 112

- (Exam Topic 1)

You are conducting an investigation of fraudulent claims in an insurance company that involves complex text searches through large numbers of documents. Which of the following tools would allow you to quickly and efficiently search for a string within a file on the bitmap image of the target computer?

- A. Stringsearch
B. grep
C. dir
D. vim

Answer: B

NEW QUESTION 117

- (Exam Topic 1)

When investigating a potential e-mail crime, what is your first step in the investigation?

- Trace the IP address to its origin
- Write a report
- Determine whether a crime was actually committed
- Recover the evidence

Answer: A

NEW QUESTION 119

- (Exam Topic 1)

Your company uses Cisco routers exclusively throughout the network. After securing the routers to the best of your knowledge, an outside security firm is brought in to assess the network security.

Although they found very few issues, they were able to enumerate the model, OS version, and capabilities for all your Cisco routers with very little effort. Which feature will you disable to eliminate the ability to enumerate this information on your Cisco routers?

- A. Border Gateway Protocol
- B. Cisco Discovery Protocol
- C. Broadcast System Protocol
- D. Simple Network Management Protocol

Answer: B

NEW QUESTION 124

- (Exam Topic 1)

Jonathan is a network administrator who is currently testing the internal security of his network. He is attempting to hijack a session, using Ettercap, of a user connected to his Web server. Why will Jonathan not succeed?

- A. Only an HTTPS session can be hijacked
B. HTTP protocol does not maintain session
C. Only FTP traffic can be hijacked
D. Only DNS traffic can be hijacked

Answer: B

NEW QUESTION 125

- (Exam Topic 1)

A honey pot deployed with the IP 172.16.1.108 was compromised by an attacker. Given below is an excerpt from a Snort binary capture of the attack. Decipher the activity carried out by the attacker by studying the log. Please note that you are required to infer only what is explicit in the excerpt.

(Note: The student is being tested on concepts learnt during passive OS fingerprinting, basic TCP/IP connection concepts and the ability to read packet signatures from a sniff dump.)

```
03/15-20:21:24.107053 211.185.125.124:3500 -> 172.16.1.108:111
```

TCP TTL:43 TOS:0x0 ID:29726 IpLen:20 DgmLen:52 DF

```
***A*** Seq: 0x9B6338C5 Ack: 0x5820ADD0 Win: 0x7D78 TcpLen: 32 TCP Options (3) => NOP NOP TS: 23678634 2878772
```

```
===== 03/15-20:21:24.452051 211.185.125.124:789 -> 172.16.1.103:111
```

UDP TTL:43 TOS:0x0 ID:29733 IpLen:20 DgmLen:84

Len: 64

01 0A 8A 0A 00 00 00 00 00 00 02 00 01 86 A0

```

01 0A 0A 0A 0A 00 00 00 00 00 00 00 02 00 01 00 70 .....
00 00 00 02 00 00 00 03 00 00 00 00 00 00 00 .....

```

```
00 00 00 02 00 00 00 00 00 00 00 00 00 00 00 .....
00 00 00 00 00 00 00 00 00 01 86 B8 00 00 00 01 .....
```

00 00 00 11 00 00 00 00

[illegible]

172.16.1.103:32773

UDP TTL:43 TOS:0x0 ID:29781 IpLen:20 DgmLen:1104 Len: 1084

47 F7 9F 63 00 00 00 00 00 00 00 02 00 01 86 B8

- A. The attacker has conducted a network sweep on port 111
B. The attacker has scanned and exploited the system using Buffer Overflow

- C. The attacker has used a Trojan on port 32773
- D. The attacker has installed a backdoor

Answer: A

NEW QUESTION 129

- (Exam Topic 1)

Hackers can gain access to Windows Registry and manipulate user passwords, DNS settings, access rights or others features that they may need in order to accomplish their objectives. One simple method for loading an application at startup is to add an entry (Key) to the following Registry Hive:

- A. HKEY_LOCAL_MACHINE\hardware\windows\start
- B. HKEY_LOCAL_USERS\Software\Microsoft\old\Version\Load
- C. HKEY_CURRENT_USER\Microsoft\Default
- D. HKEY_LOCAL_MACHINE\Software\Microsoft\CurrentVersion\Run

Answer: D

NEW QUESTION 132

- (Exam Topic 1)

You are the network administrator for a small bank in Dallas, Texas. To ensure network security, you enact a security policy that requires all users to have 14 character passwords. After giving your users 2 weeks notice, you change the Group Policy to force 14 character passwords. A week later you dump the SAM database from the standalone server and run a password-cracking tool against it. Over 99% of the passwords are broken within an hour. Why were these passwords cracked so Quickly?

- A. Passwords of 14 characters or less are broken up into two 7-character hashes
- B. A password Group Policy change takes at least 3 weeks to completely replicate throughout a network
- C. Networks using Active Directory never use SAM databases so the SAM database pulled was empty
- D. The passwords that were cracked are local accounts on the Domain Controller

Answer: A

NEW QUESTION 135

- (Exam Topic 1)

Harold is a security analyst who has just run the rdisk /s command to grab the backup SAM files on a computer. Where should Harold navigate on the computer to find the file?

- A. %systemroot%\system32\LSA
- B. %systemroot%\system32\drivers\etc
- C. %systemroot%\repair
- D. %systemroot%\LSA

Answer: C

NEW QUESTION 138

- (Exam Topic 1)

When a file is deleted by Windows Explorer or through the MS-DOS delete command, the operating system inserts in the first letter position of the filename in the FAT database.

- A. A Capital X
- B. A Blank Space
- C. The Underscore Symbol
- D. The lowercase Greek Letter Sigma (s)

Answer: D

NEW QUESTION 143

- (Exam Topic 1)

The efforts to obtain information before a trial by demanding documents, depositions, questioned and answers written under oath, written requests for admissions of fact and examination of the scene is a description of what legal term?

- A. Detection
- B. Hearsay
- C. Spoliation
- D. Discovery

Answer: D

NEW QUESTION 145

- (Exam Topic 1)

You are working as an investigator for a corporation and you have just received instructions from your manager to assist in the collection of 15 hard drives that are part of an ongoing investigation.

Your job is to complete the required evidence custody forms to properly document each piece of evidence as it is collected by other members of your team. Your manager instructs you to complete one multi-evidence form for the entire case and a single-evidence form for each hard drive. How will these forms be stored to help preserve the chain of custody of the case?

- A. All forms should be placed in an approved secure container because they are now primary evidence in the case.
- B. The multi-evidence form should be placed in the report file and the single-evidence forms should be kept with each hard drive in an approved secure container.

- C. The multi-evidence form should be placed in an approved secure container with the hard drives and the single-evidence forms should be placed in the report file.
- D. All forms should be placed in the report file because they are now primary evidence in the case.

Answer: B

NEW QUESTION 149

- (Exam Topic 1)

What is a good security method to prevent unauthorized users from "tailgating"?

- A. Man trap
- B. Electronic combination locks
- C. Pick-resistant locks
- D. Electronic key systems

Answer: A

NEW QUESTION 152

- (Exam Topic 1)

To make sure the evidence you recover and analyze with computer forensics software can be admitted in court, you must test and validate the software. What group is actively providing tools and creating procedures for testing and validating computer forensics software?

- A. Computer Forensics Tools and Validation Committee (CFTVC)
- B. Association of Computer Forensics Software Manufactures (ACFSM)
- C. National Institute of Standards and Technology (NIST)
- D. Society for Valid Forensics Tools and Testing (SVFTT)

Answer: C

NEW QUESTION 155

- (Exam Topic 1)

A(n) is one that's performed by a computer program rather than the attacker manually performing the steps in the attack sequence.

- A. blackout attack
- B. automated attack
- C. distributed attack
- D. central processing attack

Answer: B

NEW QUESTION 158

- (Exam Topic 1)

During the course of a corporate investigation, you find that an Employee is committing a crime. Can the Employer file a criminal complaint with Police?

- A. Yes, and all evidence can be turned over to the police
- B. Yes, but only if you turn the evidence over to a federal law enforcement agency
- C. No, because the investigation was conducted without following standard police procedures
- D. No, because the investigation was conducted without warrant

Answer: A

NEW QUESTION 161

- (Exam Topic 1)

You are called in to assist the police in an investigation involving a suspected drug dealer. The suspects house was searched by the police after a warrant was obtained and they located a floppy disk in the suspects bedroom. The disk contains several files, but they appear to be password protected. What are two common methods used by password cracking software that you can use to obtain the password?

- A. Limited force and library attack
- B. Brute Force and dictionary Attack
- C. Maximum force and thesaurus Attack
- D. Minimum force and appendix Attack

Answer: B

NEW QUESTION 162

- (Exam Topic 1)

Meyer Electronics Systems just recently had a number of laptops stolen out of their office. On these laptops contained sensitive corporate information regarding patents and company strategies. A month after the laptops were stolen, a competing company was found to have just developed products that almost exactly duplicated products that Meyer produces. What could have prevented this information from being stolen from the laptops?

- A. EFS Encryption
- B. DFS Encryption
- C. IPS Encryption
- D. SDW Encryption

Answer: A

NEW QUESTION 166

- (Exam Topic 1)

What is the target host IP in the following command?

- A. 172.16.28.95
- B. 10.10.150.1
- C. Firewall does not scan target hosts
- D. This command is using FIN packets, which cannot scan target hosts

Answer: A

NEW QUESTION 170

- (Exam Topic 1)

The newer Macintosh Operating System is based on:

- A. OS/2
- B. BSD Unix
- C. Linux
- D. Microsoft Windows

Answer: B

NEW QUESTION 173

- (Exam Topic 1)

You are assigned to work in the computer forensics lab of a state police agency. While working on a high profile criminal case, you have followed every applicable procedure, however your boss is still concerned that the defense attorney might question whether evidence has been changed while at the lab. What can you do to prove that the evidence is the same as it was when it first entered the lab?

- A. make an MD5 hash of the evidence and compare it with the original MD5 hash that was taken when the evidence first entered the lab
- B. make an MD5 hash of the evidence and compare it to the standard database developed by NIST
- C. there is no reason to worry about this possible claim because state labs are certified
- D. sign a statement attesting that the evidence is the same as it was when it entered the lab

Answer: A

NEW QUESTION 174

- (Exam Topic 1)

Bob has been trying to penetrate a remote production system for the past two weeks. This time however, he is able to get into the system. He was able to use the System for a period of three weeks. However, law enforcement agencies were recoding his every activity and this was later presented as evidence. The organization had used a Virtual Environment to trap Bob. What is a Virtual Environment?

- A. A Honeypot that traps hackers
- B. A system Using Trojaned commands
- C. An environment set up after the user logs in
- D. An environment set up before a user logs in

Answer: A

NEW QUESTION 176

- (Exam Topic 1)

Diskcopy is:

- A. a utility by AccessData
- B. a standard MS-DOS command
- C. Digital Intelligence utility
- D. dd copying tool

Answer: B

Explanation:

diskcopy is a STANDARD DOS utility. C:\WINDOWS>diskcopy /? Copies the contents of one floppy disk to another.

NEW QUESTION 179

- (Exam Topic 1)

What type of file is represented by a colon (:) with a name following it in the Master File Table of NTFS disk?

- A. A compressed file
- B. A Data stream file
- C. An encrypted file
- D. A reserved file

Answer: B

NEW QUESTION 182

- (Exam Topic 1)

Office documents (Word, Excel, PowerPoint) contain a code that allows tracking the MAC, or unique identifier, of the machine that created the document. What is

that code called?

- A. the Microsoft Virtual Machine Identifier
- B. the Personal Application Protocol
- C. the Globally Unique ID
- D. the Individual ASCII String

Answer: C

NEW QUESTION 187

- (Exam Topic 1)

Before you are called to testify as an expert, what must an attorney do first?

- A. engage in damage control
- B. prove that the tools you used to conduct your examination are perfect
- C. read your curriculum vitae to the jury
- D. qualify you as an expert witness

Answer: D

NEW QUESTION 192

- (Exam Topic 1)

As a CHFI professional, which of the following is the most important to your professional reputation?

- A. Your Certifications
- B. The correct, successful management of each and every case
- C. The free that you charge
- D. The friendship of local law enforcement officers

Answer: B

NEW QUESTION 193

- (Exam Topic 1)

With the standard Linux second extended file system (Ext2fs), a file is deleted when the inode internal link count reaches .

- A. 10
- B. 100
- C. 1

Answer: A

NEW QUESTION 195

- (Exam Topic 1)

When monitoring for both intrusion and security events between multiple computers, it is essential that the computers' clocks are synchronized. Synchronized time allows an administrator to reconstruct what took place during an attack against multiple computers. Without synchronized time, it is very difficult to determine exactly when specific events took place, and how events interlace. What is the name of the service used to synchronize time among multiple computers?

- A. Universal Time Set
- B. Network Time Protocol
- C. SyncTime Service
- D. Time-Sync Protocol

Answer: B

NEW QUESTION 197

- (Exam Topic 1)

An Expert witness give an opinion if:

- A. The Opinion, inferences or conclusions depend on special knowledge, skill or training not within the ordinary experience of lay jurors
- B. To define the issues of the case for determination by the finder of fact
- C. To stimulate discussion between the consulting expert and the expert witness
- D. To deter the witness from expanding the scope of his or her investigation beyond the requirements of the case

Answer: A

NEW QUESTION 201

- (Exam Topic 4)

This law sets the rules for commercial email, establishes requirements for commercial messages, gives recipients the right to have you stop emailing them, and spells out tough penalties for violations.

- A. The CAN-SPAM act
- B. Federal Spam act
- C. Telemarketing act
- D. European Anti-Spam act

Answer: A

NEW QUESTION 203

- (Exam Topic 4)

You are a forensic investigator who is analyzing a hard drive that was recently collected as evidence. You have been unsuccessful at locating any meaningful evidence within the file system and suspect a drive wiping utility may have been used. You have reviewed the keys within the software hive of the Windows registry and did not find any drive wiping utilities. How can you verify that drive wiping software was used on the hard drive?

- A. Document in your report that you suspect a drive wiping utility was used, but no evidence was found
- B. Check the list of installed programs
- C. Load various drive wiping utilities offline, and export previous run reports
- D. Look for distinct repeating patterns on the hard drive at the bit level

Answer: D

NEW QUESTION 207

- (Exam Topic 4)

This is a statement, other than one made by the declarant while testifying at the trial or hearing, offered in evidence to prove the truth of the matter asserted. Which among the following is suitable for the above statement?

- A. Testimony by the accused
- B. Limited admissibility
- C. Hearsay rule
- D. Rule 1001

Answer: C

NEW QUESTION 210

- (Exam Topic 4)

During an Investigation. Noel found a SIM card from the suspect's mobile. The ICCID on the card is 8944245252001451548. What does the first four digits (89 and 44) In the ICCID represent?

- A. TAC and industry identifier
- B. Country code and industry identifier
- C. Industry identifier and country code
- D. Issuer identifier number and TAC

Answer: C

NEW QUESTION 215

- (Exam Topic 4)

Which of the following is considered as the starting point of a database and stores user data and database objects in an MS SQL server?

- A. Ibddata1
- B. Application data files (ADF)
- C. Transaction log data files (LDF)
- D. Primary data files (MDF)

Answer: C

NEW QUESTION 217

- (Exam Topic 4)

Web browsers can store relevant information from user activities. Forensic investigators may retrieve files, lists, access history, cookies, among other digital footprints. Which tool can contribute to this task?

- A. Most Recently Used (MRU) list
- B. MZCacheView
- C. Google Chrome Recovery Utility
- D. Task Manager

Answer: B

NEW QUESTION 219

- (Exam Topic 4)

You are an information security analyst at a large pharmaceutical company. While performing a routine review of audit logs, you have noticed a significant amount of egress traffic to various IP addresses on destination port 22 during off-peak hours. You researched some of the IP addresses and found that many of them are in Eastern Europe. What is the most likely cause of this traffic?

- A. Malicious software on internal system is downloading research data from partner 5FTP servers in Eastern Europe
- B. Internal systems are downloading automatic Windows updates
- C. Data is being exfiltrated by an advanced persistent threat (APT)
- D. The organization's primary internal DNS server has been compromised and is performing DNS zone transfers to malicious external entities

Answer: C

NEW QUESTION 222

- (Exam Topic 4)

A file requires 10 KB space to be saved on a hard disk partition. An entire cluster of 32 KB has been allocated for this file. The remaining, unused space of 22 KB on this cluster will be identified as .

- A. Swap space
- B. Cluster space
- C. Slack space
- D. Sector space

Answer: D

NEW QUESTION 226

- (Exam Topic 4)

What is the extension used by Windows OS for shortcut files present on the machine?

- A. .log
- B. .pf
- C. .lnk
- D. .dat

Answer: C

NEW QUESTION 229

- (Exam Topic 4)

Which of the following is the most effective tool for acquiring volatile data from a Windows-based system?

- A. Coreography
- B. Datagrab
- C. Ethereal
- D. Helix

Answer: D

NEW QUESTION 232

- (Exam Topic 4)

Fill In the missing Master Boot Record component.

- * 1. Master boot code
- * 2. Partition table
- * 3. _____

- A. Boot loader
- B. Signature word
- C. Volume boot record
- D. Disk signature

Answer: A

NEW QUESTION 233

- (Exam Topic 4)

Which following forensic tool allows investigator to detect and extract hidden streams on NTFS drive?

- A. Stream Detector
- B. TimeStomp
- C. Autopsy
- D. analyzeMFT

Answer: A

NEW QUESTION 237

- (Exam Topic 4)

Harry has collected a suspicious executable file from an infected system and seeks to reverse its machine code to Instructions written in assembly language. Which tool should he use for this purpose?

- A. Ollydbg
- B. oledump
- C. HashCalc
- D. BinText

Answer: A

NEW QUESTION 238

- (Exam Topic 4)

An investigator wants to extract passwords from SAM and System Files. Which tool can the Investigator use to obtain a list of users, passwords, and their hashes In this case?

- A. PWdump7
- B. HashKey
- C. Nuix
- D. FileMerlin

Answer: A

NEW QUESTION 242

- (Exam Topic 4)

An EC2 instance storing critical data of a company got infected with malware. The forensics team took the EBS volume snapshot of the affected Instance to perform further analysis and collected other data of evidentiary value. What should be their next step?

- A. They should pause the running instance
- B. They should keep the instance running as it stores critical data
- C. They should terminate all instances connected via the same VPC
- D. They should terminate the instance after taking necessary backup

Answer: D

NEW QUESTION 246

- (Exam Topic 4)

Which of the following attacks refers to unintentional download of malicious software via the Internet? Here, an attacker exploits flaws in browser software to install malware merely by the user visiting the malicious website.

- A. Malvertising
- B. Internet relay chats
- C. Drive-by downloads
- D. Phishing

Answer: C

NEW QUESTION 249

- (Exam Topic 4)

A computer forensics Investigator or forensic analyst is a specially trained professional who works with law enforcement as well as private businesses to retrieve information from computers and other types of data storage devices. For this, the analyst should have an excellent working knowledge of all aspects of the computer. Which of the following is not a duty of the analyst during a criminal investigation?

- A. To create an investigation report
- B. To fill the chain of custody
- C. To recover data from suspect devices
- D. To enforce the security of all devices and software in the scene

Answer: D

NEW QUESTION 251

- (Exam Topic 4)

Steve received a mail that seemed to have come from her bank. The mail has instructions for Steve to click on a link and provide information to avoid the suspension of her account. The link in the mail redirected her to a form asking for details such as name, phone number, date of birth, credit card number or PIN, CW code, SNNs, and email address. On a closer look, Steve realized that the URL of the form is not the same as that of her bank's. Identify the type of external attack performed by the attacker in the above scenario?

- A. A phishing
- B. Espionage
- C. Tailgating
- D. Brute-force

Answer: A

NEW QUESTION 252

- (Exam Topic 3)

In a computer that has Dropbox client installed, which of the following files related to the Dropbox client store information about local Dropbox installation and the Dropbox user account, along with email IDs linked with the account?

- A. config.db
- B. install.db
- C. sigstore.db
- D. filecache.db

Answer: A

NEW QUESTION 253

- (Exam Topic 4)

Data density of a disk drive is calculated by using

- A. Slack space, bit density, and slack density.
- B. Track space, bit area, and slack space.
- C. Track density, areal density, and slack density.
- D. Track density, areal density, and bit density.

Answer: D

NEW QUESTION 255

- (Exam Topic 3)

Which of the following standard represents a legal precedent regarding the admissibility of scientific examinations or experiments in legal cases?

- A. SWGDE & SWGIT
- B. Daubert
- C. Frye
- D. IOCE

Answer: C

NEW QUESTION 259

- (Exam Topic 3)

An investigator is analyzing a checkpoint firewall log and comes across symbols. What type of log is he looking at?



- A. Security event was monitored but not stopped
- B. Malicious URL detected
- C. An email marked as potential spam
- D. Connection rejected

Answer: C

NEW QUESTION 263

- (Exam Topic 3)

Which list contains the most recent actions performed by a Windows User?

- A. MRU
- B. Activity
- C. Recents
- D. Windows Error Log

Answer: A

NEW QUESTION 267

- (Exam Topic 3)

Select the data that a virtual memory would store in a Windows-based system.

- A. Information or metadata of the files
- B. Documents and other files
- C. Application data
- D. Running processes

Answer: D

NEW QUESTION 268

- (Exam Topic 3)

Gary, a computer technician, is facing allegations of abusing children online by befriending them and sending them illicit adult images from his office computer. What type of investigation does this case require?

- A. Administrative Investigation
- B. Criminal Investigation
- C. Both Criminal and Administrative Investigation
- D. Civil Investigation

Answer: B

NEW QUESTION 270

- (Exam Topic 3)

Shane, a forensic specialist, is investigating an ongoing attack on a MySQL database server hosted on a Windows machine with SID "WIN-ABCDE12345F." Which of the following log file will help Shane in tracking all the client connections and activities performed on the database server?

- A. WIN-ABCDE12345F.err
- B. WIN-ABCDE12345F-bin.n
- C. WIN-ABCDE12345F.pid
- D. WIN-ABCDE12345F.log

Answer: D

NEW QUESTION 271

- (Exam Topic 3)

During the trial, an investigator observes that one of the principal witnesses is severely ill and cannot be present for the hearing. He decides to record the evidence and present it to the court. Under which rule should he present such evidence?

- A. Rule 1003: Admissibility of Duplicates
- B. Limited admissibility
- C. Locard's Principle
- D. Hearsay

Answer: B

NEW QUESTION 272

- (Exam Topic 3)

What does the 56.58.152.114(445) denote in a Cisco router log?

Jun 19 23:25:46.125 EST: %SEC-4-IPACCESSLOGP: list internet-inbound denied udp 67.124.115.35(8084)

-> 56.58.152.114(445), 1 packet

- A. Source IP address
- B. None of the above
- C. Login IP address
- D. Destination IP address

Answer: D

NEW QUESTION 276

- (Exam Topic 3)

Which among the following U.S. laws requires financial institutions—companies that offer consumers financial products or services such as loans, financial or investment advice, or insurance—to protect their customers' information against security threats?

- A. SOX
- B. HIPAA
- C. GLBA
- D. FISMA

Answer: C

NEW QUESTION 280

- (Exam Topic 3)

As a Certified Ethical Hacker, you were contracted by a private firm to conduct an external security assessment through penetration testing . What document describes the specifics of the testing, the associated violations, and essentially protects both the organization's interest and your liabilities as a tester?

- A. Project Scope
- B. Rules of Engagement
- C. Non-Disclosure Agreement
- D. Service Level Agreement

Answer: B

NEW QUESTION 282

- (Exam Topic 3)

Which one of the following is not a first response procedure?

- A. Preserve volatile data
- B. Fill forms
- C. Crack passwords
- D. Take photos

Answer: C

NEW QUESTION 286

- (Exam Topic 3)

Which of the following files store the MySQL database data permanently, including the data that had been deleted, helping the forensic investigator in examining the case and finding the culprit?

- A. mysql-bin
- B. mysql-log
- C. iblog
- D. ibdata1

Answer: D

NEW QUESTION 288

- (Exam Topic 3)

Which program uses different techniques to conceal a malware's code, thereby making it difficult for security mechanisms to detect or remove it?

- A. Dropper
- B. Packer
- C. Injector
- D. Obfuscator

Answer: D

NEW QUESTION 291

- (Exam Topic 3)

Which among the following laws emphasizes the need for each Federal agency to develop, document, and implement an organization-wide program to provide information security for the information systems that support its operations and assets?

- A. FISMA
- B. HIPAA
- C. GLBA
- D. SOX

Answer: A

NEW QUESTION 295

- (Exam Topic 3)

%3cscript%3ealert("XXXXXXXX")%3c/script%3e is a script obtained from a Cross-Site Scripting attack.

What type of encoding has the attacker employed?

- A. Double encoding
- B. Hex encoding
- C. Unicode
- D. Base64

Answer: B

NEW QUESTION 297

- (Exam Topic 3)

What is an investigator looking for in the rp.log file stored in a system running on Windows 10 operating system?

- A. Restore point interval
- B. Automatically created restore points
- C. System CheckPoints required for restoring
- D. Restore point functions

Answer: C

NEW QUESTION 298

- (Exam Topic 3)

In Linux OS, different log files hold different information, which help the investigators to analyze various issues during a security incident. What information can the investigators obtain from the log file var/log/dmesg?

- A. Kernel ring buffer information
- B. All mail server message logs
- C. Global system messages
- D. Debugging log messages

Answer: A

NEW QUESTION 303

- (Exam Topic 3)

During an investigation of an XSS attack, the investigator comes across the term “[a-zA-Z0-9\%]” in analyzed evidence details. What is the expression used for?

- A. Checks for upper and lower-case alphanumeric string inside the tag, or its hex representation
- B. Checks for forward slash used in HTML closing tags, its hex or double-encoded hex equivalent
- C. Checks for opening angle bracket, its hex or double-encoded hex equivalent
- D. Checks for closing angle bracket, hex or double-encoded hex equivalent

Answer: B

NEW QUESTION 308

- (Exam Topic 3)

A section of your forensics lab houses several electrical and electronic equipment. Which type of fire extinguisher you must install in this area to contain any fire incident?

- A. Class B
- B. Class D
- C. Class C
- D. Class A

Answer: C

NEW QUESTION 312

- (Exam Topic 3)

A Linux system is undergoing investigation. In which directory should the investigators look for its current state data if the system is in powered on state?

- A. /auth
- B. /proc

- C. /var/log/debug
- D. /var/spool/cron/

Answer: B

NEW QUESTION 317

- (Exam Topic 3)

Which of the following tool can reverse machine code to assembly language?

- A. PEiD
- B. RAM Capturer
- C. IDA Pro
- D. Deep Log Analyzer

Answer: C

NEW QUESTION 321

- (Exam Topic 3)

Steve, a forensic investigator, was asked to investigate an email incident in his organization. The organization has Microsoft Exchange Server deployed for email communications. Which among the following files will Steve check to analyze message headers, message text, and standard attachments?

- A. PUB.EDB
- B. PRIV.EDB
- C. PUB.STM
- D. PRIV.STM

Answer: B

NEW QUESTION 323

- (Exam Topic 3)

Which of the following Linux command searches through the current processes and lists the process IDs those match the selection criteria to stdout?

- A. pstree
- B. pgrep
- C. ps
- D. grep

Answer: B

NEW QUESTION 324

- (Exam Topic 3)

James, a hacker, identifies a vulnerability in a website. To exploit the vulnerability, he visits the login page and notes down the session ID that is created. He appends this session ID to the login URL and shares the link with a victim. Once the victim logs into the website using the shared URL, James reloads the webpage (containing the URL with the session ID appended) and now, he can browse the active session of the victim. Which attack did James successfully execute?

- A. Cross Site Request Forgery
- B. Cookie Tampering
- C. Parameter Tampering
- D. Session Fixation Attack

Answer: D

NEW QUESTION 328

- (Exam Topic 3)

Which of the following is a precomputed table containing word lists like dictionary files and brute force lists and their hash values?

- A. Directory Table
- B. Rainbow Table
- C. Master file Table (MFT)
- D. Partition Table

Answer: B

NEW QUESTION 332

- (Exam Topic 3)

Which layer of iOS architecture should a forensics investigator evaluate to analyze services such as Threading, File Access, Preferences, Networking and high-level features?

- A. Core Services
- B. Media services
- C. Cocoa Touch
- D. Core OS

Answer: D

NEW QUESTION 337

- (Exam Topic 3)

Which of the following protocols allows non-ASCII files, such as video, graphics, and audio, to be sent through the email messages?

- A. MIME
- B. BINHEX
- C. UT-16
- D. UUCODE

Answer: A

NEW QUESTION 341

- (Exam Topic 3)

What is the role of Alloc.c in Apache core?

- A. It handles allocation of resource pools
- B. It is useful for reading and handling of the configuration files
- C. It takes care of all the data exchange and socket connections between the client and the server
- D. It handles server start-ups and timeouts

Answer: A

NEW QUESTION 342

- (Exam Topic 3)

You are working as an independent computer forensics investigator and received a call from a systems administrator for a local school system requesting your assistance. One of the students at the local high school is suspected of downloading inappropriate images from the Internet to a PC in the Computer Lab. When you arrive at the school, the systems administrator hands you a hard drive and tells you that he made a “simple backup copy” of the hard drive in the PC and put it on this drive and requests that you examine the drive for evidence of the suspected images. You inform him that a “simple backup copy” will not provide deleted files or recover file fragments. What type of copy do you need to make to ensure that the evidence found is complete and admissible in future proceeding?

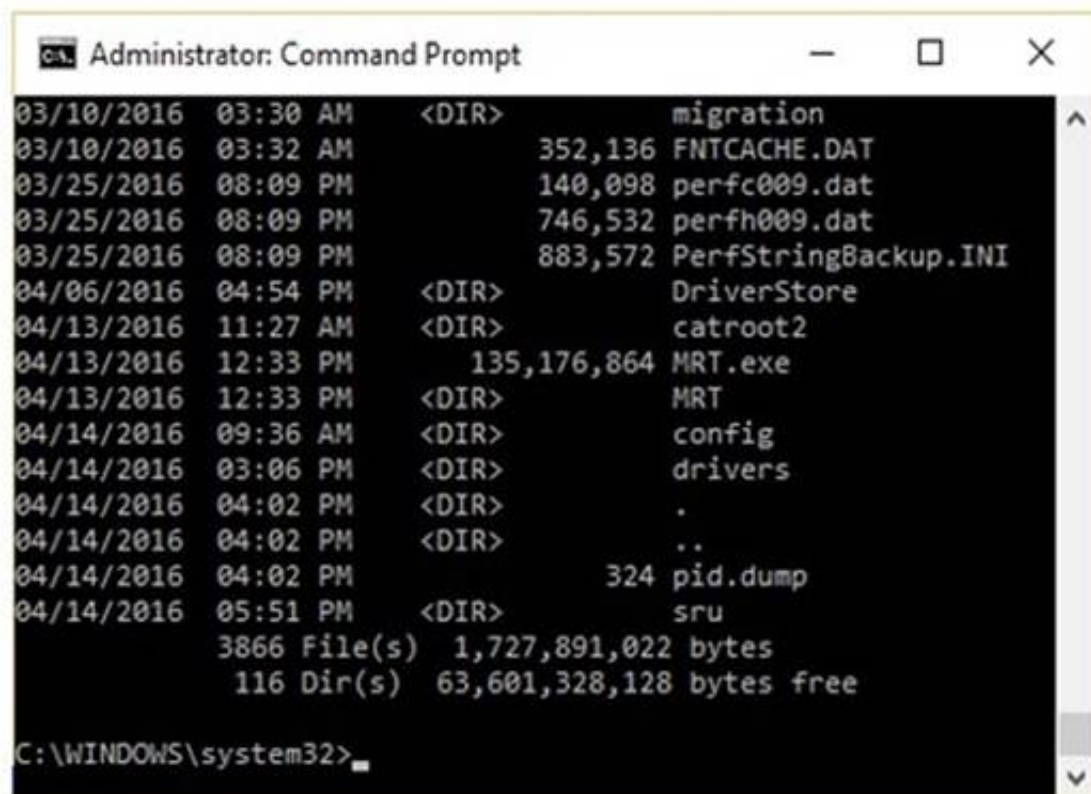
- A. Robust copy
- B. Incremental backup copy
- C. Bit-stream copy
- D. Full backup copy

Answer: C

NEW QUESTION 347

- (Exam Topic 3)

The given image displays information about date and time of installation of the OS along with service packs, patches, and sub-directories. What command or tool did the investigator use to view this output?



```
Administrator: Command Prompt
03/10/2016 03:30 AM <DIR> migration
03/10/2016 03:32 AM 352,136 FNTCACHE.DAT
03/25/2016 08:09 PM 140,098 perfc009.dat
03/25/2016 08:09 PM 746,532 perfh009.dat
03/25/2016 08:09 PM 883,572 PerfStringBackup.INI
04/06/2016 04:54 PM <DIR> DriverStore
04/13/2016 11:27 AM <DIR> catroot2
04/13/2016 12:33 PM 135,176,864 MRT.exe
04/13/2016 12:33 PM <DIR> MRT
04/14/2016 09:36 AM <DIR> config
04/14/2016 03:06 PM <DIR> drivers
04/14/2016 04:02 PM <DIR> .
04/14/2016 04:02 PM <DIR> ..
04/14/2016 04:02 PM 324 pid.dump
04/14/2016 05:51 PM <DIR> sru
3866 File(s) 1,727,891,022 bytes
116 Dir(s) 63,601,328,128 bytes free

C:\WINDOWS\system32>
```

- A. dir /o:d
- B. dir /o:s
- C. dir /o:e
- D. dir /o:n

Answer: A

NEW QUESTION 348

- (Exam Topic 3)

CAN-SPAM act requires that you:

- A. Don't use deceptive subject lines
- B. Don't tell the recipients where you are located
- C. Don't identify the message as an ad
- D. Don't use true header information

Answer: A

NEW QUESTION 352

- (Exam Topic 3)

What must an attorney do first before you are called to testify as an expert?

- A. Qualify you as an expert witness
- B. Read your curriculum vitae to the jury
- C. Engage in damage control
- D. Prove that the tools you used to conduct your examination are perfect

Answer: A

NEW QUESTION 354

- (Exam Topic 3)

When analyzing logs, it is important that the clocks of all the network devices are synchronized. Which protocol will help in synchronizing these clocks?

- A. UTC
- B. PTP
- C. Time Protocol
- D. NTP

Answer: D

NEW QUESTION 357

- (Exam Topic 3)

The MAC attributes are timestamps that refer to a time at which the file was last modified or last accessed or originally created. Which of the following file systems store MAC attributes in Coordinated Universal Time (UTC) format?

- A. File Allocation Table (FAT)
- B. New Technology File System (NTFS)
- C. Hierarchical File System (HFS)
- D. Global File System (GFS)

Answer: B

NEW QUESTION 362

- (Exam Topic 3)

Which of the following attack uses HTML tags like <script></script>?

- A. Phishing
- B. XSS attack
- C. SQL injection
- D. Spam

Answer: B

NEW QUESTION 365

- (Exam Topic 3)

Which Linux command when executed displays kernel ring buffers or information about device drivers loaded into the kernel?

- A. pgrep
- B. dmesg
- C. fsck
- D. grep

Answer: B

NEW QUESTION 367

- (Exam Topic 3)

Report writing is a crucial stage in the outcome of an investigation. Which information should not be included in the report section?

- A. Speculation or opinion as to the cause of the incident
- B. Purpose of the report
- C. Author of the report
- D. Incident summary

Answer: A

NEW QUESTION 372

- (Exam Topic 3)

What is the investigator trying to analyze if the system gives the following image as output?

```

Administrator: Command Prompt
Microsoft Windows [Version 10.0.10586]
(c) 2015 Microsoft Corporation. All rights reserved.

C:\WINDOWS\system32\logonSessions.exe

LogonSessions v1.3
Copyright (C) 2004-2015 Mark Russinovich
Sysinternals - www.sysinternals.com

[0] Logon session 00000000:000003e7:
  User name:      WORKGROUP\RD-006$
  Auth package:  NTLM
  Logon type:     (none)
  Session:       0
  Sid:           5-1-5-18
  Logon time:     3/10/2016 3:32:46 AM
  Logon server:
  DNS Domain:
  UPN:

[1] Logon session 00000000:000009209:
  User name:
  Auth package:  NTLM
  Logon type:     (none)
  Session:       0
  Sid:           (none)
  Logon time:     3/10/2016 3:32:46 AM
  Logon server:
  DNS Domain:
  UPN:

[2] Logon session 00000000:000003e4:
  User name:      WORKGROUP\RD-006$
  Auth package:  Negotiate
  Logon type:     Service
  Session:       0
  Sid:           5-1-5-20
  Logon time:     3/10/2016 3:32:46 AM
  Logon server:
  DNS Domain:
  UPN:
  
```

- A. All the logon sessions
- B. Currently active logon sessions
- C. Inactive logon sessions
- D. Details of users who can logon

Answer: B

NEW QUESTION 375

- (Exam Topic 3)

Which of the following is a federal law enacted in the US to control the ways that financial institutions deal with the private information of individuals?

- A. SOX
- B. HIPAA 1996
- C. GLBA
- D. PCI DSS

Answer: C

NEW QUESTION 378

- (Exam Topic 3)

Which of the following is a device monitoring tool?

- A. Capsa
- B. Driver Detective
- C. Regshot
- D. RAM Capturer

Answer: A

NEW QUESTION 382

- (Exam Topic 3)

Which of the following tools is not a data acquisition hardware tool?

- A. UltraKit
- B. Atola Insight Forensic
- C. F-Response Imager
- D. Triage-Responder

Answer: C

NEW QUESTION 387

- (Exam Topic 3)

Which of the following is NOT an anti-forensics technique?

- A. Data Deduplication
- B. Password Protection
- C. Encryption
- D. Steganography

Answer: A

NEW QUESTION 391

- (Exam Topic 3)

Which of the following statements is TRUE about SQL Server error logs?

- A. SQL Server error logs record all the events occurred on the SQL Server and its databases
- B. Forensic investigator uses SQL Server Profiler to view error log files
- C. Error logs contain IP address of SQL Server client connections
- D. Trace files record, user-defined events, and specific system events

Answer: B

NEW QUESTION 392

- (Exam Topic 3)

Which of the following is a part of a Solid-State Drive (SSD)?

- A. Head
- B. Cylinder
- C. NAND-based flash memory
- D. Spindle

Answer: C

NEW QUESTION 393

- (Exam Topic 3)

Identify the file system that uses \$Bitmap file to keep track of all used and unused clusters on a volume.

- A. NTFS
- B. FAT
- C. EXT
- D. FAT32

Answer: A

NEW QUESTION 397

- (Exam Topic 3)

> NMAP -sn 192.168.11.200-215 The NMAP command above performs which of the following?

- A. A trace sweep
- B. A port scan
- C. A ping scan
- D. An operating system detect

Answer: C

NEW QUESTION 400

- (Exam Topic 3)

Examination of a computer by a technically unauthorized person will almost always result in:

- A. Rendering any evidence found inadmissible in a court of law
- B. Completely accurate results of the examination
- C. The chain of custody being fully maintained
- D. Rendering any evidence found admissible in a court of law

Answer: A

NEW QUESTION 404

- (Exam Topic 3)

Which of the following is found within the unique instance ID key and helps investigators to map the entry from USBSTOR key to the MountedDevices key?

- A. ParentIDPrefix
- B. LastWrite
- C. UserAssist key
- D. MRUListEx key

Answer: A

NEW QUESTION 409

- (Exam Topic 3)

UEFI is a specification that defines a software interface between an OS and platform firmware. Where does this interface store information about files present on a disk?

- A. BIOS-MBR
- B. GUID Partition Table (GPT)
- C. Master Boot Record (MBR)
- D. BIOS Parameter Block

Answer: B

NEW QUESTION 411

- (Exam Topic 3)

Chong-lee, a forensics executive, suspects that a malware is continuously making copies of files and folders on a victim system to consume the available disk space. What type of test would confirm his claim?

- A. File fingerprinting
- B. Identifying file obfuscation
- C. Static analysis
- D. Dynamic analysis

Answer: A

NEW QUESTION 416

- (Exam Topic 3)

Which part of Metasploit framework helps users to hide the data related to a previously deleted file or currently unused by the allocated file.

- A. Waffin FS
- B. RuneFS
- C. FragFS
- D. Slacker

Answer: D

NEW QUESTION 417

- (Exam Topic 3)

An attacker successfully gained access to a remote Windows system and plans to install persistent backdoors on it. Before that, to avoid getting detected in future, he wants to cover his tracks by disabling the last-accessed timestamps of the machine. What would he do to achieve this?

- A. Set the registry value of HKLM\SYSTEM\CurrentControlSet\Control\FileSystem\NtfsDisableLastAccessUpdate to 0
- B. Run the command fsutil behavior set disablelastaccess 0
- C. Set the registry value of HKLM\SYSTEM\CurrentControlSet\Control\FileSystem\NtfsDisableLastAccessUpdate to 1
- D. Run the command fsutil behavior set enablelastaccess 0

Answer: C

NEW QUESTION 421

- (Exam Topic 3)

NTFS sets a flag for the file once you encrypt it and creates an EFS attribute where it stores Data Decryption Field (DDF) and Data Recovery Field (DDR). Which of the following is not a part of DDF?

- A. Encrypted FEK
- B. Checksum
- C. EFS Certificate Hash
- D. Container Name

Answer: B

NEW QUESTION 425

- (Exam Topic 2)

What is one method of bypassing a system BIOS password?

- A. Removing the processor
- B. Removing the CMOS battery
- C. Remove all the system memory
- D. Login to Windows and disable the BIOS password

Answer: B

NEW QUESTION 429

- (Exam Topic 2)

Where is the startup configuration located on a router?

- A. Static RAM
- B. BootROM
- C. NVRAM
- D. Dynamic RAM

Answer: C

NEW QUESTION 433

- (Exam Topic 2)

What must an investigator do before disconnecting an iPod from any type of computer?

- A. Unmount the iPod
- B. Mount the iPod
- C. Disjoin the iPod
- D. Join the iPod

Answer: A

NEW QUESTION 435

- (Exam Topic 2)

Depending upon the jurisdictional areas, different laws apply to different incidents. Which of the following law is related to fraud and related activity in connection with computers?

- A. 18 USC §1029
- B. 18 USC §1030
- C. 18 USC §1361
- D. 18 USC §1371

Answer: B

NEW QUESTION 436

- (Exam Topic 2)

The investigator wants to examine changes made to the system's registry by the suspect program. Which of the following tool can help the investigator?

- A. TRIPWIRE
- B. RAM Capturer
- C. Regshot
- D. What's Running

Answer: C

NEW QUESTION 440

- (Exam Topic 2)

After attending a CEH security seminar, you make a list of changes you would like to perform on your network to increase its security. One of the first things you change is to switch the RestrictAnonymous setting from 0 to 1 on your servers. This, as you were told, would prevent anonymous users from establishing a null session on the server. Using Userinfo tool mentioned at the seminar, you succeed in establishing a null session with one of the servers. Why is that?

- A. RestrictAnonymous must be set to "10" for complete security
- B. RestrictAnonymous must be set to "3" for complete security
- C. RestrictAnonymous must be set to "2" for complete security
- D. There is no way to always prevent an anonymous null session from establishing

Answer: C

NEW QUESTION 441

- (Exam Topic 2)

Netstat is a tool for collecting information regarding network connections. It provides a simple view of TCP and UDP connections, and their state and network traffic statistics. Which of the following commands shows you the TCP and UDP network connections, listening ports, and the identifiers?

- A. netstat - r
- B. netstat - ano
- C. netstat - b
- D. netstat - s

Answer: B

NEW QUESTION 445

- (Exam Topic 2)

Under confession, an accused criminal admitted to encrypting child pornography pictures and then hiding them within other pictures. What technique did the

accused criminal employ?

- A. Typography
- B. Steganalysis
- C. Picture encoding
- D. Steganography

Answer: D

NEW QUESTION 446

- (Exam Topic 2)

Where is the default location for Apache access logs on a Linux computer?

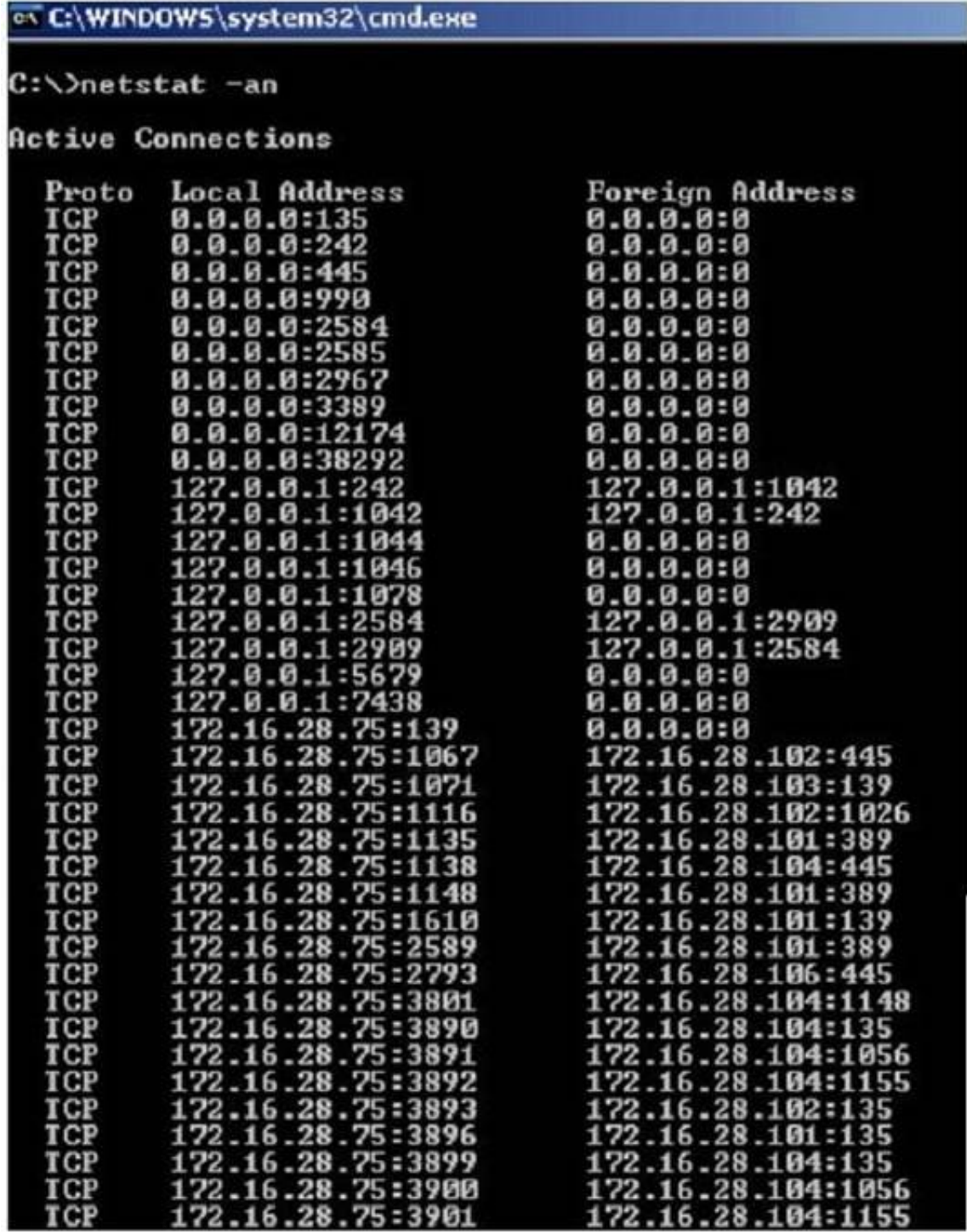
- A. usr/local/apache/logs/access_log
- B. bin/local/home/apache/logs/access_log
- C. usr/logs/access_log
- D. logs/usr/apache/access_log

Answer: A

NEW QUESTION 448

- (Exam Topic 2)

Jack Smith is a forensics investigator who works for Mason Computer Investigation Services. He is investigating a computer that was infected by Ramen Virus.



He runs the netstat command on the machine to see its current connections. In the following screenshot, what do the 0.0.0.0 IP addresses signify?

- A. Those connections are established
- B. Those connections are in listening mode
- C. Those connections are in closed/waiting mode
- D. Those connections are in timed out/waiting mode

Answer: B

NEW QUESTION 452

- (Exam Topic 2)

A. 202

- B. 404
- C. 606
- D. 999

Answer: B

NEW QUESTION 454

- (Exam Topic 2)

NTFS has reduced slack space than FAT, thus having lesser potential to hide data in the slack space. This is because:

- A. FAT does not index files
- B. NTFS is a journaling file system
- C. NTFS has lower cluster size space
- D. FAT is an older and inefficient file system

Answer: C

NEW QUESTION 459

- (Exam Topic 2)

You have been called in to help with an investigation of an alleged network intrusion. After questioning the members of the company IT department, you search through the server log files to find any trace of the intrusion. After that you decide to telnet into one of the company routers to see if there is any evidence to be found. While connected to the router, you see some unusual activity and believe that the attackers are currently connected to that router. You start up an ethereal session to begin capturing traffic on the router that could be used in the investigation. At what layer of the OSI model are you monitoring while watching traffic to and from the router?

- A. Network
- B. Transport
- C. Data Link
- D. Session

Answer: A

NEW QUESTION 461

- (Exam Topic 2)

When searching through file headers for picture file formats, what should be searched to find a JPEG file in hexadecimal format?

- A. FF D8 FF E0 00 10
- B. FF FF FF FF FF FF
- C. FF 00 FF 00 FF 00
- D. EF 00 EF 00 EF 00

Answer: A

NEW QUESTION 462

- (Exam Topic 2)

Harold is finishing up a report on a case of network intrusion, corporate spying, and embezzlement that he has been working on for over six months. He is trying to find the right term to use in his report to describe network-enabled spying. What term should Harold use?

- A. Spycrack
- B. Spynet
- C. Netspionage
- D. Hackspionage

Answer: C

NEW QUESTION 467

- (Exam Topic 2)

Jacky encrypts her documents using a password. It is known that she uses her daughter's year of birth as part of the password. Which password cracking technique would be optimal to crack her password?

- A. Rule-based attack
- B. Brute force attack
- C. Syllable attack
- D. Hybrid attack

Answer: A

NEW QUESTION 468

- (Exam Topic 2)

Smith, a network administrator with a large MNC, was the first to arrive at a suspected crime scene involving criminal use of compromised computers. What should be his first response while maintaining the integrity of evidence?

- A. Record the system state by taking photographs of physical system and the display
- B. Perform data acquisition without disturbing the state of the systems
- C. Open the systems, remove the hard disk and secure it
- D. Switch off the systems and carry them to the laboratory

Answer: A

NEW QUESTION 471

- (Exam Topic 2)

What feature of Decryption Collection allows an investigator to crack a password as quickly as possible?

- A. Cracks every password in 10 minutes
- B. Distribute processing over 16 or fewer computers
- C. Support for Encrypted File System
- D. Support for MD5 hash verification

Answer: B

NEW QUESTION 476

- (Exam Topic 2)

Which of the following tool enables a user to reset his/her lost admin password in a Windows system?

- A. Advanced Office Password Recovery
- B. Active@ Password Changer
- C. Smartkey Password Recovery Bundle Standard
- D. Passware Kit Forensic

Answer: B

NEW QUESTION 478

- (Exam Topic 2)

What does 254 represent in ICCID 89254021520014515744?

- A. Industry Identifier Prefix
- B. Country Code
- C. Individual Account Identification Number
- D. Issuer Identifier Number

Answer: B

NEW QUESTION 480

- (Exam Topic 2)

Ivanovich, a forensics investigator, is trying to extract complete information about running processes from a system. Where should he look apart from the RAM and virtual memory?

- A. Swap space
- B. Application data
- C. Files and documents
- D. Slack space

Answer: A

NEW QUESTION 481

- (Exam Topic 2)

Sectors are pie-shaped regions on a hard disk that store data. Which of the following parts of a hard disk do not contribute in determining the addresses of data?

- A. Sectors
- B. Interface
- C. Cylinder
- D. Heads

Answer: B

NEW QUESTION 482

- (Exam Topic 2)

Which of the following are small pieces of data sent from a website and stored on the user's computer by the user's web browser to track, validate, and maintain specific user information?

- A. Temporary Files
- B. Open files
- C. Cookies
- D. Web Browser Cache

Answer: C

NEW QUESTION 484

- (Exam Topic 2)

Which among the following search warrants allows the first responder to get the victim's computer information such as service records, billing records, and subscriber information from the service provider?

- A. Citizen Informant Search Warrant
- B. Electronic Storage Device Search Warrant
- C. John Doe Search Warrant
- D. Service Provider Search Warrant

Answer: B

NEW QUESTION 488

- (Exam Topic 2)

When is it appropriate to use computer forensics?

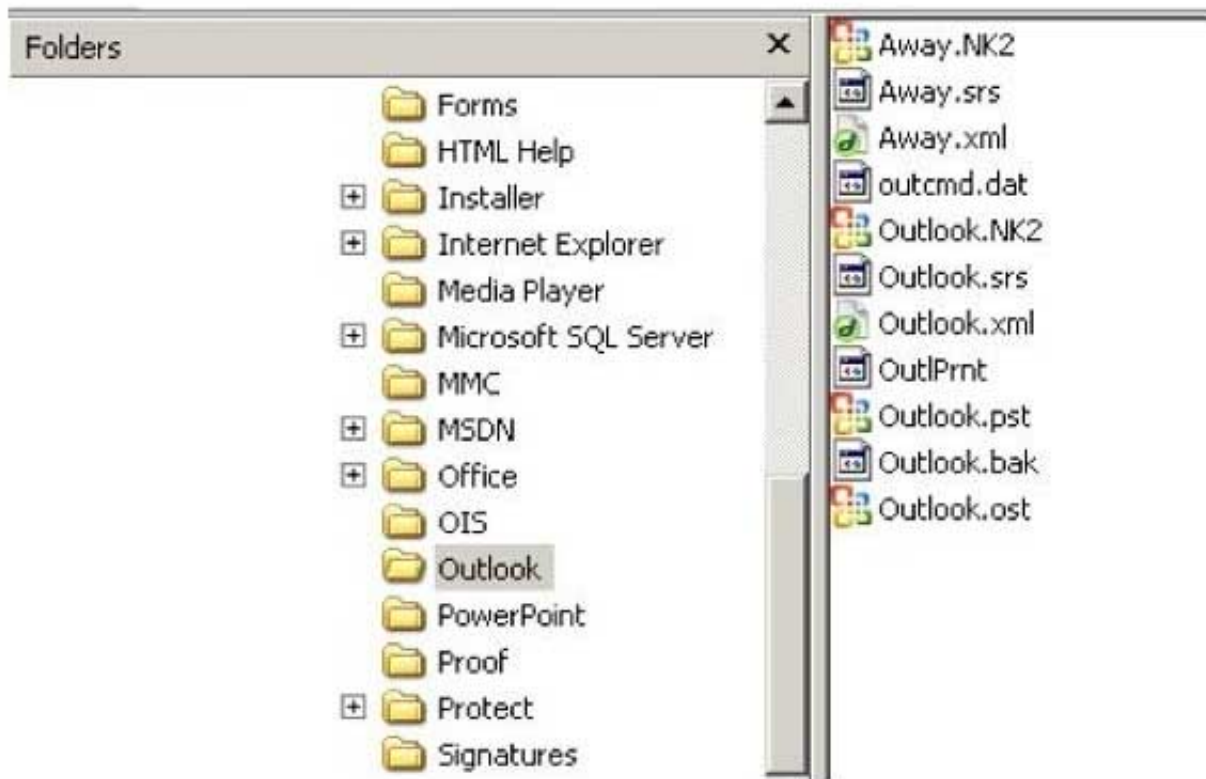
- A. If copyright and intellectual property theft/misuse has occurred
- B. If employees do not care for their boss management techniques
- C. If sales drop off for no apparent reason for an extended period of time
- D. If a financial institution is burglarized by robbers

Answer: A

NEW QUESTION 491

- (Exam Topic 2)

In the following directory listing,



Which file should be used to restore archived email messages for someone using Microsoft Outlook?

- A. Outlook bak
- B. Outlook ost
- C. Outlook NK2
- D. Outlook pst

Answer: D

NEW QUESTION 494

- (Exam Topic 2)

Which of the following stages in a Linux boot process involve initialization of the system's hardware?

- A. BIOS Stage
- B. Bootloader Stage
- C. BootROM Stage
- D. Kernel Stage

Answer: A

NEW QUESTION 496

- (Exam Topic 2)

Which of the following is a database in which information about every file and directory on an NT File System (NTFS) volume is stored?

- A. Volume Boot Record
- B. Master Boot Record
- C. GUID Partition Table
- D. Master File Table

Answer: D

NEW QUESTION 500

- (Exam Topic 2)

What file is processed at the end of a Windows XP boot to initialize the logon dialog box?

- A. NTOSKRNL.EXE
- B. NTLDR
- C. LSASS.EXE
- D. NTDETECT.COM

Answer: A

NEW QUESTION 505

- (Exam Topic 2)

Which code does the FAT file system use to mark the file as deleted?

- A. ESH
- B. 5EH
- C. H5E
- D. E5H

Answer: D

NEW QUESTION 509

- (Exam Topic 2)

When marking evidence that has been collected with the aa/ddmmyy/nnnn/zz format, what does the nnn denote?

- A. The year the evidence was taken
- B. The sequence number for the parts of the same exhibit
- C. The initials of the forensics analyst
- D. The sequential number of the exhibits seized

Answer: D

NEW QUESTION 511

- (Exam Topic 2)

Which MySQL log file contains information on server start and stop?

- A. Slow query log file
- B. General query log file
- C. Binary log
- D. Error log file

Answer: D

NEW QUESTION 514

- (Exam Topic 2)

While presenting his case to the court, Simon calls many witnesses to the stand to testify. Simon decides to call Hillary Taft, a lay witness, to the stand. Since Hillary is a lay witness, what field would she be considered an expert in?

- A. Technical material related to forensics
- B. No particular field
- C. Judging the character of defendants/victims
- D. Legal issues

Answer: B

NEW QUESTION 517

- (Exam Topic 2)

What is the size value of a nibble?

- A. 0.5 kilo byte
- B. 0.5 bit
- C. 0.5 byte
- D. 2 bits

Answer: C

NEW QUESTION 519

- (Exam Topic 2)

A picture file is recovered from a computer under investigation. During the investigation process, the file is enlarged 500% to get a better view of its contents. The picture quality is not degraded at all from this process. What kind of picture is this file. What kind of picture is this file?

- A. Raster image
- B. Vector image
- C. Metafile image
- D. Catalog image

Answer: B

NEW QUESTION 520

- (Exam Topic 2)

If a PDA is seized in an investigation while the device is turned on, what would be the proper procedure?

- A. Keep the device powered on
- B. Turn off the device immediately
- C. Remove the battery immediately
- D. Remove any memory cards immediately

Answer: A

NEW QUESTION 521

- (Exam Topic 2)

Microsoft Security IDs are available in Windows Registry Editor. The path to locate IDs in Windows 7 is:

- A. HKEY_LOCAL_MACHINE\SOFTWARE\Microsoft\Windows NT\CurrentVersion\ProfileList
- B. HKEY_LOCAL_MACHINE\SOFTWARE\Microsoft\Windows\CurrentVersion\ProfileList
- C. HKEY_LOCAL_MACHINE\SOFTWARE\Microsoft\Windows NT\CurrentVersion\RegList
- D. HKEY_LOCAL_MACHINE\SOFTWARE\Microsoft\Windows NT\CurrentVersion\Regedit

Answer: A

NEW QUESTION 523

- (Exam Topic 2)

Linux operating system has two types of typical bootloaders namely LILO (Linux Loader) and GRUB (Grand Unified Bootloader). In which stage of the booting process do the bootloaders become active?

- A. Bootloader Stage
- B. Kernel Stage
- C. BootROM Stage
- D. BIOS Stage

Answer: A

NEW QUESTION 525

- (Exam Topic 2)

Using Linux to carry out a forensics investigation, what would the following command accomplish? `dd if=/usr/home/partition.image of=/dev/sdb2 bs=4096 conv=notrunc,noerror`

- A. Search for disk errors within an image file
- B. Backup a disk to an image file
- C. Copy a partition to an image file
- D. Restore a disk from an image file

Answer: D

NEW QUESTION 527

.....

Thank You for Trying Our Product

We offer two products:

1st - We have Practice Tests Software with Actual Exam Questions

2nd - Questions and Answers in PDF Format

312-49v10 Practice Exam Features:

- * 312-49v10 Questions and Answers Updated Frequently
- * 312-49v10 Practice Questions Verified by Expert Senior Certified Staff
- * 312-49v10 Most Realistic Questions that Guarantee you a Pass on Your FirstTry
- * 312-49v10 Practice Test Questions in Multiple Choice Formats and Updatesfor 1 Year

100% Actual & Verified — Instant Download, Please Click
[Order The 312-49v10 Practice Test Here](#)