



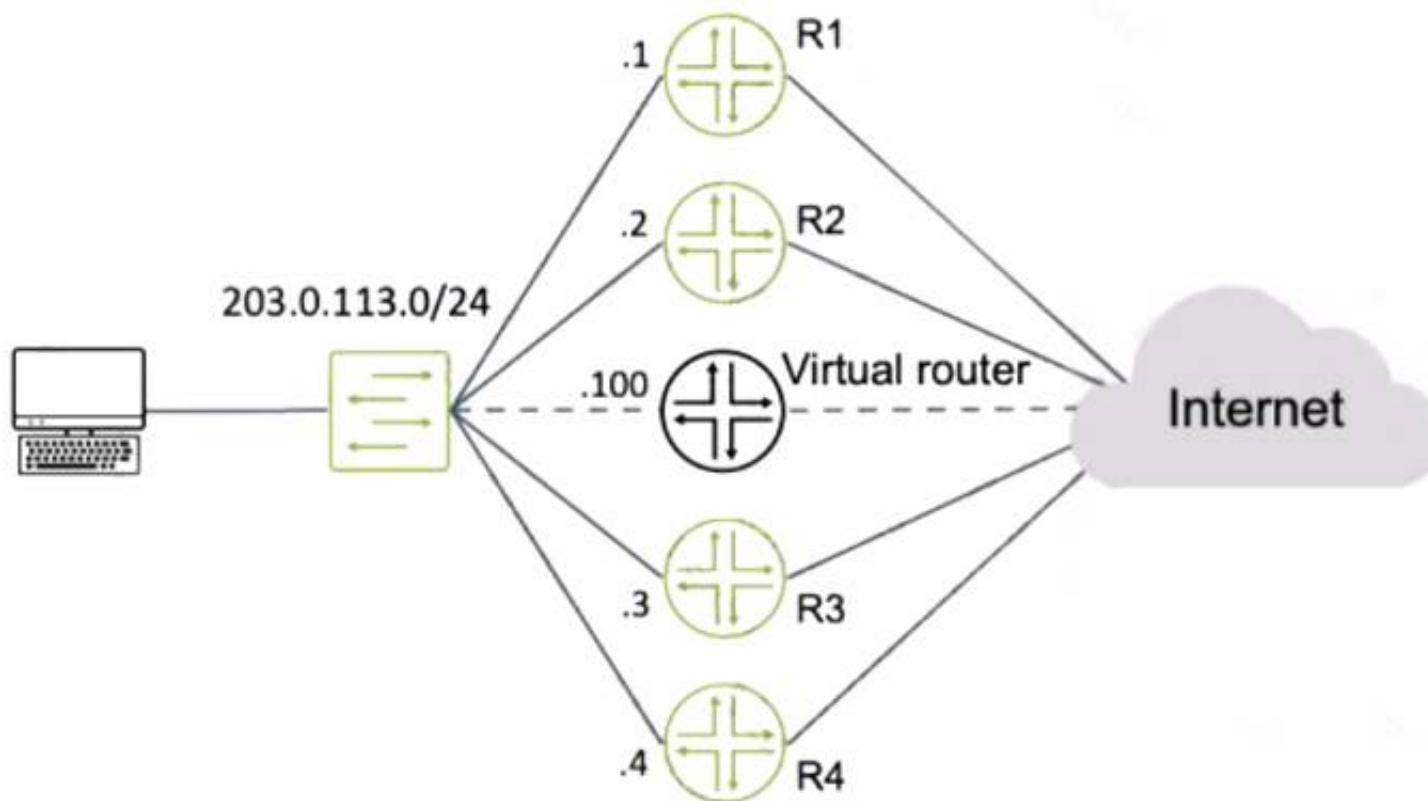
Juniper

Exam Questions JN0-363

Service Provider Routing and Switching Specialist (JNCIS-SP)

NEW QUESTION 1

Exhibit



Routers R1 and R4 have a VRRP priority of 90, while R2 and R3 have default VRRP priorities. Referring to the exhibit, which router will be elected as the primary VRRP router?

- A. R3
- B. R4
- C. R2
- D. R1

Answer: D

NEW QUESTION 2

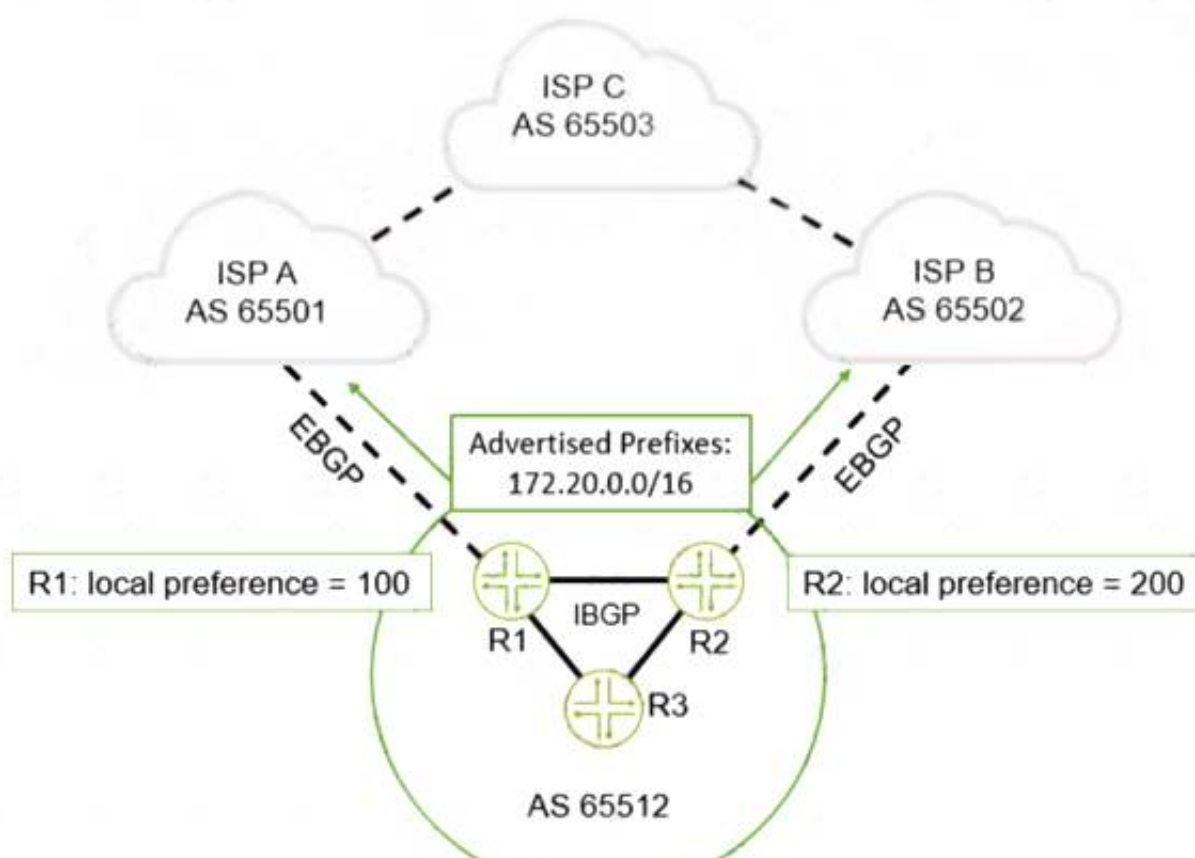
You have created a routing instance named vr3 that will provide access to Server 2 (10.0.0.2) (or the hosts on the 10.10.10.0/24 network). Which command would you use to test connectivity between vr3 and Server 2?

- A. user@vr3> ping 10.0.0.2 count 5
- B. user@vr3> ping 10.0.0.2 count 5 source 10.10.10.1
- C. user@router1> ping 10.0.0.2 count 5
- D. user@router1> ping 10.0.0.2 routing-instance vr3 count 5

Answer: C

NEW QUESTION 3

Exhibit



You are advertising a summary route that represents your local network (172.20.0.0/16) to both ISP A and ISP B. You want to influence all traffic sent to you from ISP C to go through R2. How would you accomplish this task?

- A. On R1, prepend your AS number three times on the 172.20.0.0/16 route when advertising it to ISP 1.
- B. On R1, change the local preference value to 250.
- C. On R2, prepend your AS number three times on the 172.20.0.0/16 route when advertising it to ISP 2.
- D. On R2, change the local preference value to 50.

Answer: B

NEW QUESTION 4

Which two statements are correct about the way that BGP propagates routes by default? (Choose two.)

- A. A route learned by EBGP will be re-advertised to IBGP peers.
- B. A route learned by IBGP will not be re-advertised to IBGP peers.
- C. A route learned by EBGP will not be re-advertised to IBGP peers.
- D. A route learned by IBGP will be re-advertised to IBGP peers.

Answer: CD

NEW QUESTION 5

Which two statements are correct about the BGP next-hop attribute value? (Choose two.)

- A. By default, the next-hop value is changed across IBGP links.
- B. By default, the next-hop value is changed across EBGP links.
- C. By default, the next-hop value is not changed across IBGP links.
- D. By default, the next-hop value is not changed across EBGP links.

Answer: A

NEW QUESTION 6

Exhibit



```
[edit]
user@Router1# show protocols bgp
group External {
  peer-as 64525;
  neighbor 172.25.1.2;
}
```

Referring to the exhibit, what must be included in the Router1 configuration when establishing an EBGP session with the ISP?

- A. A local address must be specified.
- B. A local AS must be specified.
- C. The BGP session type internal must be specified.
- D. The BGP session type external must be specified.

Answer: A

NEW QUESTION 7

Exhibit

Exhibit

```
user@R2> show ospf route
Topology default Route Table:
Prefix                Path   Route      NH   Metric  NextHop      Nexthop
                    Type   Type      Type
192.168.1.1           Intra AS BR      IP      1  ge-0/0/3.0  172.26.1.1
192.168.1.3           Intra Area BR   IP      1  ge-0/0/1.0  172.26.2.2
172.18.1.0/24         Ext2  Network    IP      0  ge-0/0/3.0  172.26.1.1
172.26.1.0/30          Intra Network   IP      1  ge-0/0/3.0
172.26.2.0/30          Intra Network   IP      1  ge-0/0/1.0
172.26.3.0/30          Intra Network   IP     100  ge-0/0/2.0
172.26.4.0/30          Inter Network    IP      2  ge-0/0/1.0  172.26.2.2
192.168.1.1/32         Ext2  Network    IP      1  ge-0/0/3.0  172.26.1.1
192.168.1.2/32          Intra Network    IP      0  lo0.0
192.168.1.3/32          Intra Network    IP      1  ge-0/0/1.0  172.26.2.2
192.168.1.4/32          Inter Network    IP      2  ge-0/0/1.0  172.26.2.2
```

Which prefix in the output shown in the exhibit is an external prefix injected by an OSPF router?

- A. 192.168.1.3
- B. 172.18.1.0/24
- C. 192.108.1.4
- D. 172.26.4.0/30

Answer: D

NEW QUESTION 8

What are three types of MPLS routers? (Choose three.)

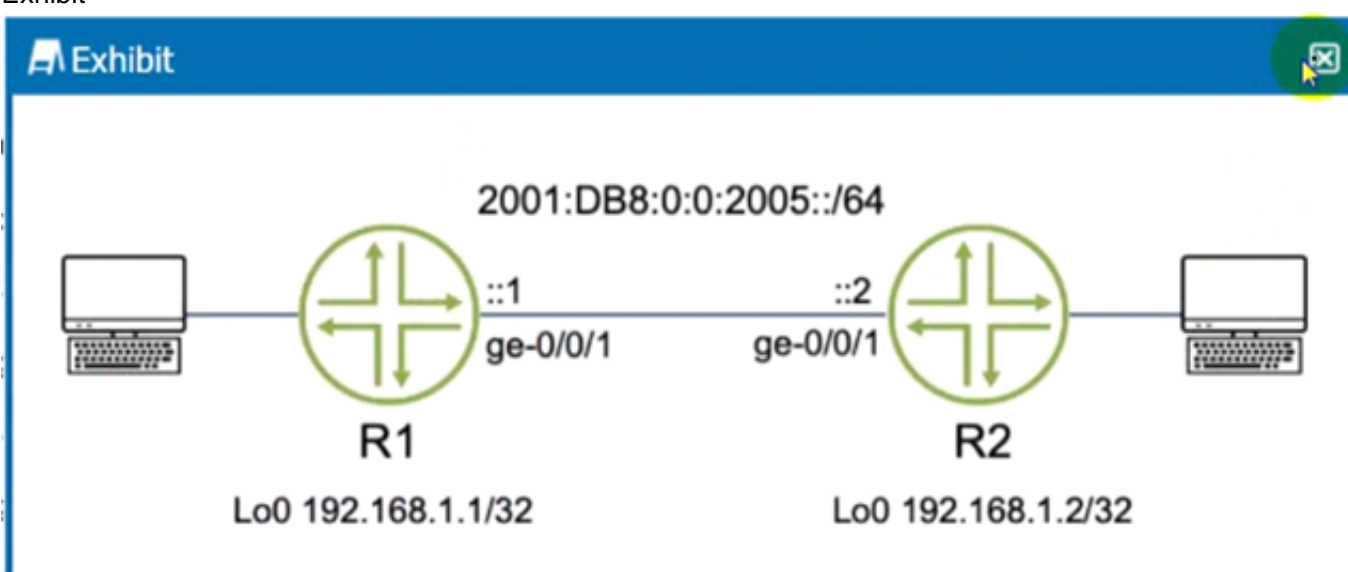
- A. transit routers
- B. peering routers
- C. egress routers
- D. aggregation routers
- E. ingress routers

Answer: ACE

NEW QUESTION 9

Exhibit

Exhibit



You are asked to configure OSPF between routers R1 and R2 using IPv6 addresses. Which two tasks will accomplish your objective? (Choose two.)

- A. Issue the sec protocols ospf area 0.0.0.0 interface ge-0/0/1.0 command.
- B. Under the [edit routing-options] hierarchy, configure a 32-bit router ID.
- C. issue the set protocols ospf3 area 0.0.0.0 interface ge-0/0/1.0 command.
- D. Under the [edit routing-options] hierarchy, configure a 128-bit router ID.

Answer: AD

NEW QUESTION 10

The segment touting SRGB start label is 10,000 and the SRGB index range is 500.
 In this scenario, which two statements are correct? (Choose two.)

- A. The first usable label is 10,001.
- B. The last usable label is 10,501.
- C. The last usable label is 10,499.
- D. The first usable label is 10,000.

Answer: CD

NEW QUESTION 10

Exhibit

Exhibit
✕

```

user@R1> show configuration protocols mpls
label-switched-path R1_TO_R5 {
    to 192.168.1.5;
    no-cspf;
}
interface ge-0/0/0.0;
interface ge-0/0/1.0;
            
```

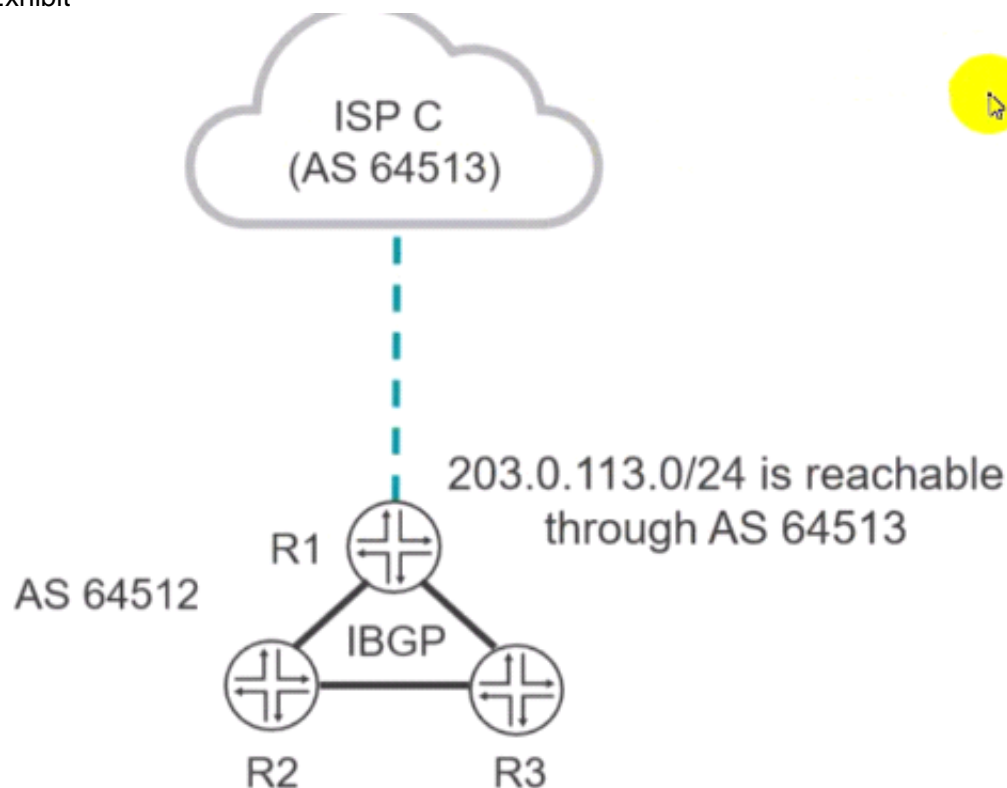
You have an established LSP between your R1 and R5 devices using the configuration shown in the exhibit. You are asked to ensure that MPLS labels are used to forward traffic by all devices within the LSP. Which action will accomplish this behavior?

- A. Configure the ultimate-hop-popping statement under the R1_TO_R5 label switched path on R1.
- B. Configure the explicit-null statement under the protocol mpls hierarchy on R1.
- C. Delete the no-cspf statement under the R1_TO_R5 label switched path on R1.
- D. Configure the install statement under the R1_TO_R5 label switched path on R1.

Answer: D

NEW QUESTION 15

Exhibit



You confirm that the R2 and R3 routers are receiving a BGP route to the 203.0.113.0/24 network, but both routers display the route as hidden. Referring to the exhibit, which two actions solve this problem? (Choose two.)

- A. Apply the routing policy on R1 as an export policy to the IBGP group.
- B. Apply the routing policy on R1 as an Import policy to the IBGP group.
- C. Configure a routing policy on R1 that sets the next hop for the 203.0.113.0/24 BGP route to the IP address that R1 uses for IBGP peering.
- D. Configure a routing policy on R1 that sets the next hop for the 203.0.113.0/24 BGP route to the IP address that R1 uses for EBGP peering.

Answer: CD

NEW QUESTION 18

Exhibit

```
[edit]
user@router# set routing-options nonstop-routing
[edit]
user@router#
```

Referring to the exhibit, which two additional steps should you take to fully configure NSR? (Choose two.)

- A. You should configure the max period for NSR precision timers.
- B. You must configure GRES.
- C. You must configure graceful restart.
- D. You should configure commit synchronization.

Answer: AB

NEW QUESTION 19

Which configuration setting prohibits a static route from being redistributed by a dynamic routing protocol?

- A. route-filter
- B. no-readvertise
- C. qualified-next-hop
- D. passive

Answer: B

NEW QUESTION 20

An OSPF router does not have a router ID configured.

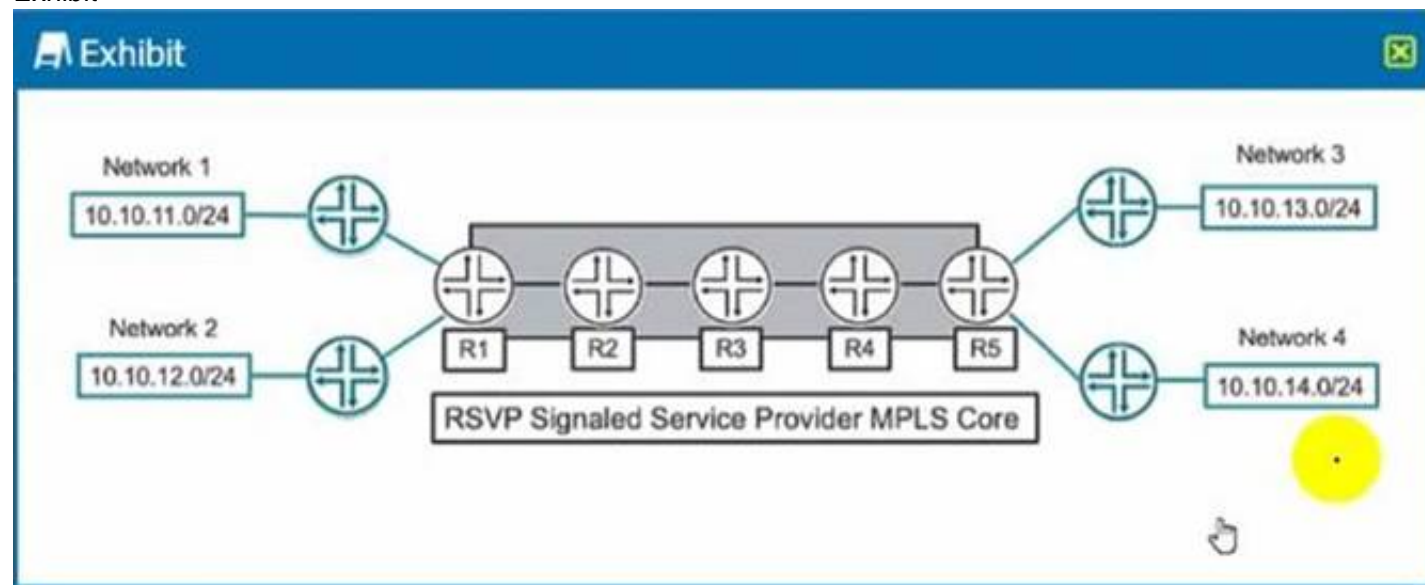
In this scenario, which statement is correct about the router ID?

- A. The Junos OS will use the IP address assigned to the interface with the lowest MAC address.
- B. A router ID will not be assigned until it is manually configured.
- C. The Junos OS will use the IP address assigned to the loopback interface for the router ID.
- D. The Junos OS will use the IP address assigned to the Interface with the highest priority.

Answer: B

NEW QUESTION 25

Exhibit



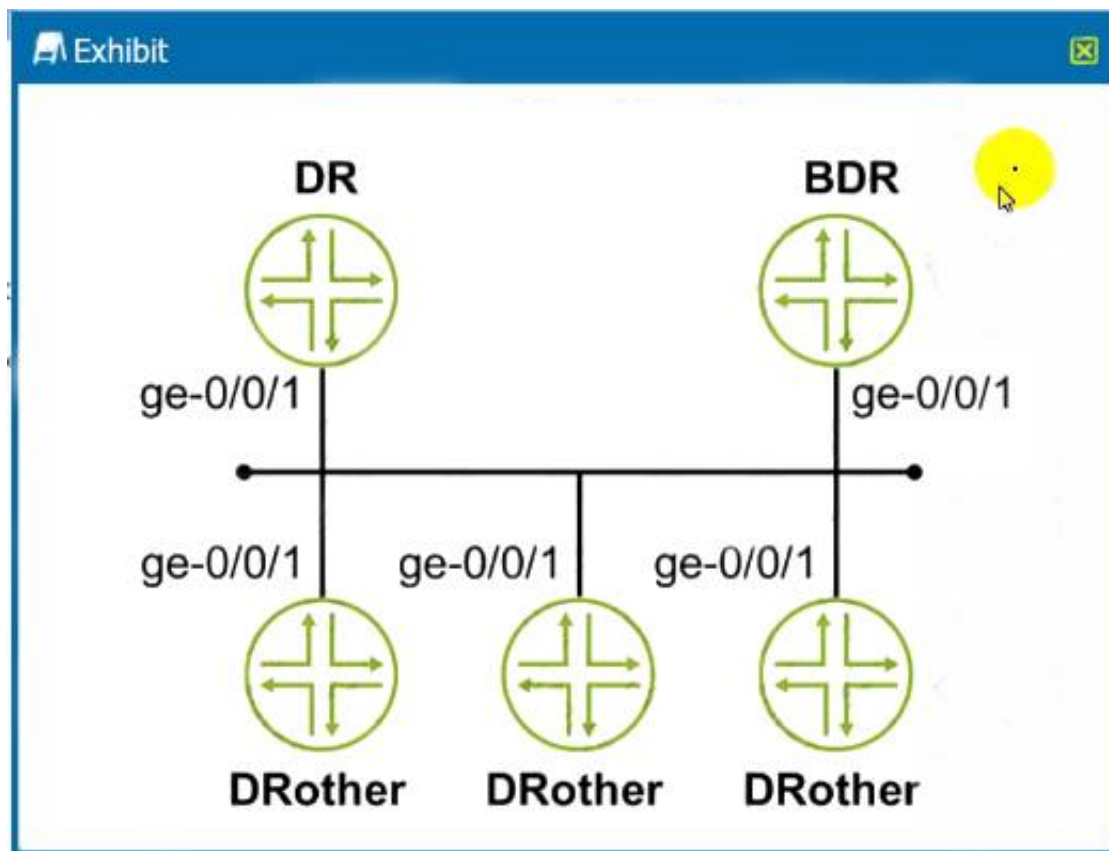
Which two statements are correct about the service provider MPLS network shown in the exhibit? (Choose two.)

- A. R3 is considered a P router.
- B. R3 is considered a PE router.
- C. R3 is considered a transit router.
- D. R3 is considered an ingress router.

Answer: AB

NEW QUESTION 30

Exhibit



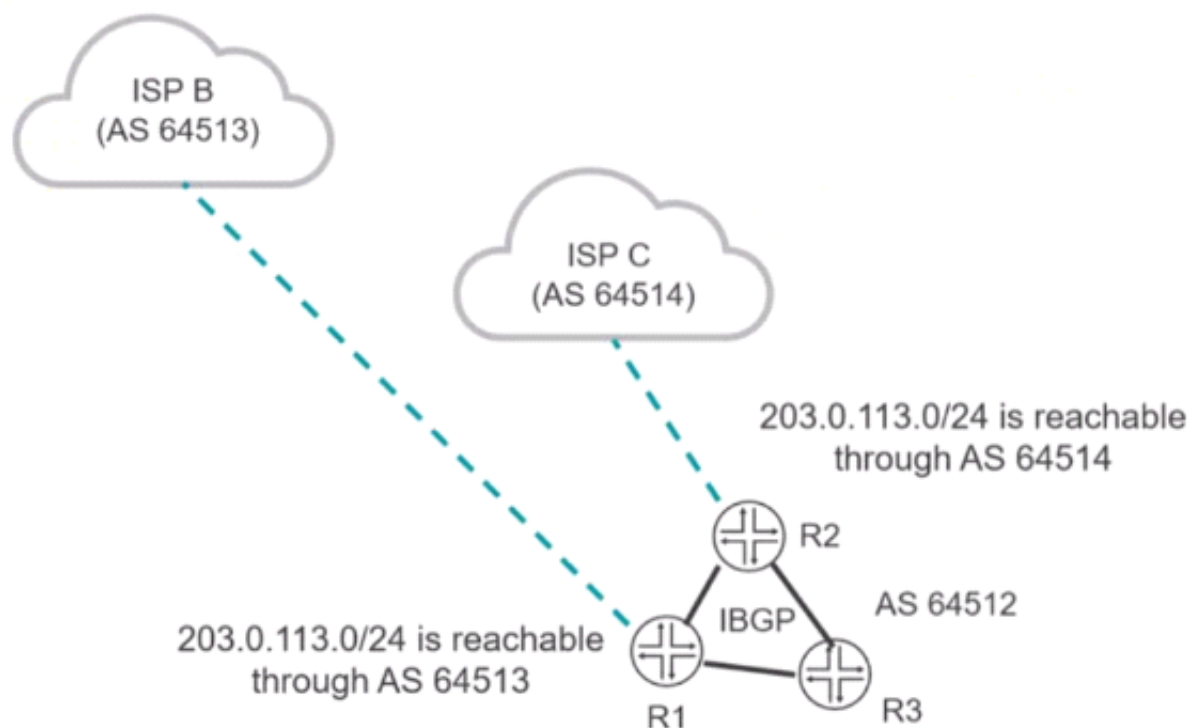
You are asked to configure the OSPF environment to prevent the DRoother routers from participating in DR/BDR election. Referring to the exhibit, which command will accomplish this task?

- A. set protocols ospf area 0.0.0.0 interface ge-0/0/1 priority 255
- B. set protocols ospf area 0.0.0.0 interface ge-0/0/1 priority 0
- C. set protocols ospf area 0.0.0.0 interface ge-0/0/1 interface-type nbma
- D. set protocols ospf area 0.0.0.0 interface ge-0/0/1 interface-type p2p

Answer: A

NEW QUESTION 33

Exhibit



You want the R1 and R3 routers to forward traffic destined to the 203.0.113.0/24 network through R2. Which BGP attribute would you modify to satisfy this requirement?

- A. community
- B. origin
- C. MED
- D. local preference

Answer: C

NEW QUESTION 35

Which two statements are correct about the community BGP attribute on a Junos device? (Choose two.)

- A. The community attribute is a mandatory BGP attribute.
- B. If the community attribute is present, it is ignored and deleted in the BGP updates.
- C. If the community attribute is present, it should be passed unchanged in the BGP updates.
- D. The community attribute is an optional BGP attribute.

Answer: AC

NEW QUESTION 36

You want to enable a routing platform with redundant REs to switch from a primary RE to a backup RE without alerting peer nodes. Which two technologies would you use to satisfy this requirement? (Choose two.)

- A. GRES
- B. VRRP
- C. NSR
- D. ISSU

Answer: BC

NEW QUESTION 38

Exhibit

```
user@router-re0> show system s?
Possible completions:
  services          Show service applications information
  snapshot          Show snapshot information
  software          Show loaded JUNOS extensions
  statistics        Show statistics for protocol
  storage           Show local storage data
```

You have configured graceful RE switchover (GRES), however you cannot complete the show system switchover command. Referring to the exhibit, what is the problem?

- A. The command is only available if non-stop routing is enabled.
- B. The command is only available on the backup Routing Engine.
- C. The command is only available if a backup router is configured.
- D. The command is only available if graceful restart is enabled.

Answer: B

NEW QUESTION 40

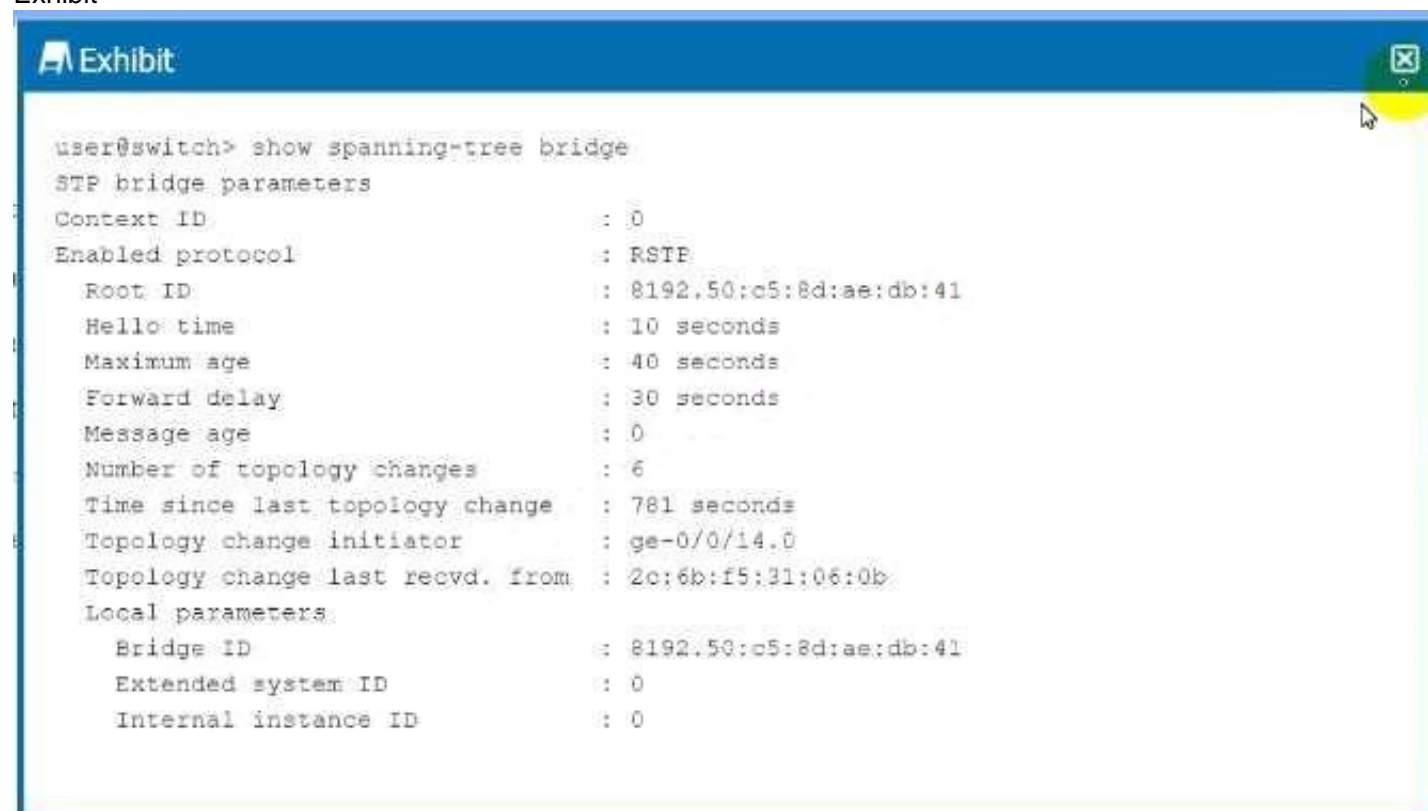
What are two bridging concepts that are used to maintain an Ethernet switching table? (Choose two.)

- A. learning
- B. exporting
- C. aging
- D. timing

Answer: A

NEW QUESTION 42

Exhibit



```
user@switch> show spanning-tree bridge
STP bridge parameters
Context ID          : 0
Enabled protocol    : RSTP
  Root ID           : 8192.50:c5:8d:ae:db:41
  Hello time        : 10 seconds
  Maximum age       : 40 seconds
  Forward delay     : 30 seconds
  Message age       : 0
  Number of topology changes : 6
  Time since last topology change : 781 seconds
  Topology change initiator : ge-0/0/14.0
  Topology change last recvd. from : 2c:6b:f5:31:06:0b
Local parameters
  Bridge ID         : 8192.50:c5:8d:ae:db:41
  Extended system ID : 0
  Internal instance ID : 0
```

Which two statements are correct about the information shown in the exhibit? (Choose two.)

- A. The root bridge is reachable using the ge-0/0/14 interface.
- B. This switch is the root bridge for this spanning tree topology.
- C. This switch has a bridge priority of 8k.
- D. The root bridge's priority is 4k.

Answer: BD

NEW QUESTION 46

Which two interface types are used as tunnel endpoints? (Choose two.)

- A. ae
- B. ip
- C. ge
- D. gr

Answer: BC

NEW QUESTION 48

Which new field is added to an IPv6 header as compared to IPv4?

- A. version
- B. checksum
- C. fragment offset
- D. flow label

Answer: D

NEW QUESTION 51

Exhibit



```
user@router> show mpls lsp ingress detail
Ingress LSP: 1 sessions
192.168.0.3
  From: 0.0.0.0, State: Dn, ActiveRoute: 0, LSPname: to-R3
  ActivePath: (none)
  LSPTYPE: Static Configured, Penultimate hop popping
  LoadBalance: Random
  Follow destination IGP metric
  Encoding type: Packet, Switching type: Packet, GPID: IPv4
  LSP Self-ping Status : Enabled
  Primary                               State: Dn
    Priorities: 7 0
    SmartOptimizeTimer: 180
    Flap Count: 0
    MBB Count: 0
    Will be enqueued for recomputation in 18 second(s).
    1 Mar  9 23:22:22.998 CSPP: could not determine self
user@router> show ted database
TED database: 0 ISIS nodes 0 INET nodes
[edit protocols]
user@router# show
ospf {
  area 0.0.0.0 {
    interface ge-0/0/2.0;
    interface ge-0/0/4.0;
  }
}
rsvp {
  interface all;
}
bgp {
  group Int {
    type internal;
    local-address 192.168.0.1;
    export nhs;
    neighbor 192.168.0.3;
  }
}
mpls {
  label-switched-path to-R3 {
    to 192.168.0.3;
  }
  interface all;
}
```

The LSP is not establishing correctly.

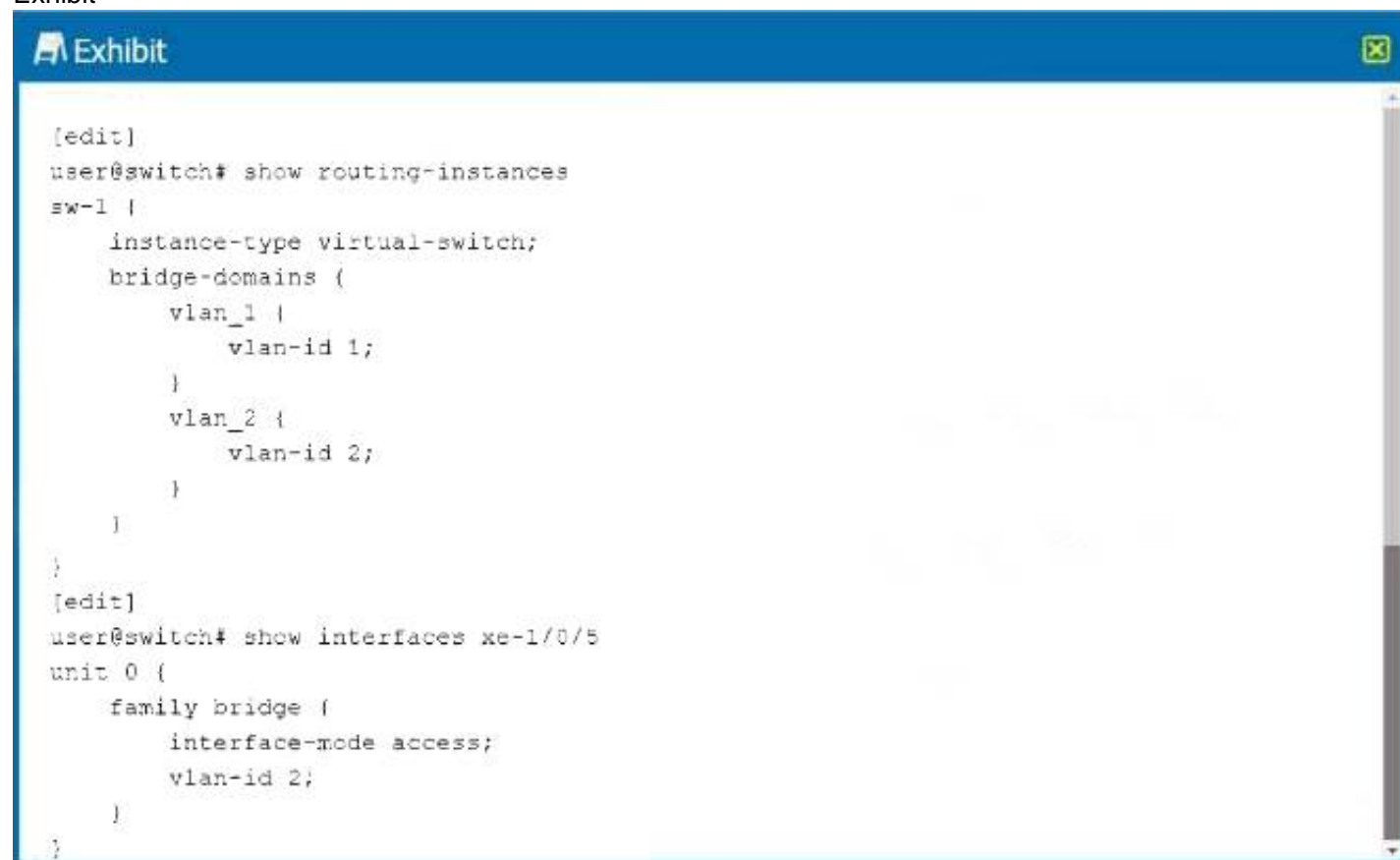
Referring to the exhibit, what should you do to solve the problem?

- A. Enable traffic engineering for the OSPF protocol.
- B. Enable traffic engineering for the IS-IS protocol.
- C. Enable traffic engineering for the BGP protocol.
- D. Enable traffic engineering for the RSVP protocol.

Answer: D

NEW QUESTION 54

Exhibit



```
[edit]
user@switch# show routing-instances
sw-1 {
    instance-type virtual-switch;
    bridge-domains {
        vlan_1 {
            vlan-id 1;
        }
        vlan_2 {
            vlan-id 2;
        }
    }
}
[edit]
user@switch# show interfaces xe-1/0/5
unit 0 {
    family bridge {
        interface-mode access;
        vlan-id 2;
    }
}
```

You are asked to assign interface xe-1/0/5 to a virtual switch. What must be accomplished to complete the configuration?

- A. Interface xe-1/0/5 must be added to routing-instance sw-1 vlan_2.
- B. Interface xe-1/0/5 must be a trunk port.
- C. Interface xe-1/0/5 must be added to routing-instance sw-1.
- D. An IRB interface must be configured to routing-instance sw-1 vlan_2.

Answer: C

NEW QUESTION 55

You are asked to create connections between routing instances on the same Junos device and route between the connected Instances. What are two ways to accomplish this task? (Choose two.)

- A. Use physical interfaces.
- B. Use an IRB interface.
- C. Use logical tunnel interfaces.
- D. Use loopback interfaces.

Answer: AB

NEW QUESTION 57

You are asked to configure an LSP which uses the OSPF link state database for path computations. Which two statements are correct in this scenario? (Choose two.)

- A. You must use the no-cspf parameter in the label-switched-path configuration.
- B. Traffic engineering extensions are enabled by default in OSPF.
- C. Traffic engineering extensions are not enabled by default in OSPF.
- D. You must use the policing parameter in the label-switched-path configuration.

Answer: AC

NEW QUESTION 61

You are adding an IPv6 configuration to an Interface on a Junos device. In this scenario, which statement is correct?

- A. The link local address must be manually configured within the fd00::/8 prefix range.
- B. The link local address must be manually configured within the fe80::/10 prefix range.
- C. The link local address is automatically created using the MAC address within the fe80::/10 prefix range.
- D. The link local address is automatically created using the MAC address within the fd00::/8 prefix range.

Answer: D

NEW QUESTION 65

.....

Thank You for Trying Our Product

We offer two products:

1st - We have Practice Tests Software with Actual Exam Questions

2nd - Questions and Answers in PDF Format

JN0-363 Practice Exam Features:

- * JN0-363 Questions and Answers Updated Frequently
- * JN0-363 Practice Questions Verified by Expert Senior Certified Staff
- * JN0-363 Most Realistic Questions that Guarantee you a Pass on Your First Try
- * JN0-363 Practice Test Questions in Multiple Choice Formats and Updates for 1 Year

100% Actual & Verified — Instant Download, Please Click
[Order The JN0-363 Practice Test Here](#)