

Exam Questions SnowPro-Core

SnowPro Core Certification Exam

<https://www.2passeasy.com/dumps/SnowPro-Core/>



NEW QUESTION 1

- (Exam Topic 1)

True or False: A third-party tool that supports standard JDBC or ODBC but has no Snowflake-specific driver will be unable to connect to Snowflake.

- A. True
- B. False

Answer: B

Explanation:

<https://docs.snowflake.com/en/user-guide/jdbc.html>

Snowflake provides a JDBC type 4 driver that supports core JDBC functionality. The JDBC driver must be installed in a 64-bit environment and requires Java 1.8 (or higher). The driver can be used with most client tools/applications that support JDBC for connecting to a database server.

NEW QUESTION 2

- (Exam Topic 1)

Which of the following statements is true of Snowflake micro-partitioning?

- A. Micro-partitioning has been known to introduce data skew
- B. Micro-partitioning: requires a partitioning schema to be defined up front
- C. Micro-partitioning is transparently completed using the ordering that occurs when the data is inserted/loaded
- D. Micro-partitioning can be disabled within a Snowflake account

Answer: C

Explanation:

Reference: <https://docs.snowflake.com/en/user-guide/tables-clustering-micropartitions.html>

NEW QUESTION 3

- (Exam Topic 1)

The FLATEEN function is used to query which type of data in Snowflake?

- A. Structured data
- B. Semi-structured data
- C. Both of the above
- D. None of the above

Answer: B

Explanation:

Reference: <https://docs.snowflake.com/en/user-guide/querying-semistructured.html>

FLATTEN is used to unnest semi-structured data. Don't see an application for structured data as by definition it shouldn't be nested.

NEW QUESTION 4

- (Exam Topic 1)

Which of the following best describes where Snowflake's metadata is stored?

- A. Within the data files
- B. Inside the Virtual Warehouses
- C. In the Cloud Services Layer
- D. within the drivers

Answer: C

NEW QUESTION 5

- (Exam Topic 1)

True or False: When a new Snowflake object is created, it is automatically owned by the user who created it.

- A. True
- B. False

Answer: A

Explanation:

Reference: <https://docs.snowflake.com/en/user-guide/security-access-control-overview.html>

NEW QUESTION 6

- (Exam Topic 1)

True or False: Micro-partition metadata enables some operations to be completed without requiring Compute.

- A. True
- B. False

Answer: A

Explanation:

Reference: <https://blog.ippon.tech/innovative-snowflake-features-caching/>

NEW QUESTION 7

- (Exam Topic 1)

Why would a customer size a Virtual Warehouse from an X-Small to a Medium?

- A. To accommodate more queries
- B. To accommodate more users
- C. To accommodate fluctuations in workload
- D. To accommodate a more complex workload

Answer: D

Explanation:

Reference: <https://docs.snowflake.com/en/user-guide/warehouses-considerations.html>

NEW QUESTION 8

- (Exam Topic 1)

True or False: A Snowflake account is charged for data stored in both Internal and External Stages.

- A. True
- B. False

Answer: A

Explanation:

Reference: <https://docs.snowflake.com/en/user-guide/tables-storage-considerations.html>

NEW QUESTION 9

- (Exam Topic 1)

Which of the following statements are true of VALIDATION_MODE in Snowflake? (Choose two.)

- A. The validation_mode option is used when creating an Internal Stage
- B. validation_mode=return_all_errors is a parameter of the copy command
- C. The validation_mode option will validate data to be loaded by the copy statement while completing the load and will return the rows that could not be loaded without error
- D. The validation_mode option will validate data to be loaded by the copy statement without completing the load and will return possible errors

Answer: BD

Explanation:

Reference: <https://docs.snowflake.com/en/user-guide/data-load-bulk-ts.html>

NEW QUESTION 10

- (Exam Topic 1)

True or False: Some queries can be answered through the metadata cache and do not require an active Virtual Warehouse.

- A. True
- B. False

Answer: A

Explanation:

Some aggregate queries are answered thru micro partitions metadata only not requiring any VW spin ups.

NEW QUESTION 10

- (Exam Topic 1)

Which statement best describes " clustering"?

- A. Clustering represents the way data is grouped together and stored within snowflake's micro-partitions
- B. The database administrator must define the clustering methodology for each Snowflake table.
- C. The clustering key must be included on the COPV command when loading data into Snowflake.
- D. Clustering can be disabled within a Snowflake account.

Answer: A

Explanation:

Reference: <https://docs.snowflake.com/en/user-guide/tables-clustering-micropartitions.html>

NEW QUESTION 15

- (Exam Topic 1)

Which of the following objects is not covered by Time Travel?

- A. Tables
- B. Schemas

- C. Databases
- D. Stages

Answer: D

Explanation:

Reference: <https://docs.snowflake.com/en/user-guide/data-time-travel.html>

NEW QUESTION 16

- (Exam Topic 1)

How a Snowpipe charges calculated?

- A. Per-second/per Warehouse size
- B. Per-second/per-core granularity
- C. Number of Pipes in account
- D. Total storage bucket size

Answer: B

Explanation:

Reference: <https://docs.snowflake.com/en/user-guide/data-load-snowpipe-billing.html>

NEW QUESTION 19

- (Exam Topic 1)

Which of the following statements is true of zero-copy cloning?

- A. Zero-copy clones objects inherit
- B. All zero-copy clone objects inherit the privileges of their original objects
- C. Zero-copy coning is licensed as an additional Snowflake feature
- D. At the instance/instance a clone is created, all micro-partitions in the original table and the clone are fully shared.

Answer: D

Explanation:

Reference: <https://community.snowflake.com/s/question/0D50Z00009D8VOd/zero-copy-cloning-base-data>

NEW QUESTION 22

- (Exam Topic 1)

Which of the following are valid Snowflake Virtual Warehouse Scaling Policies? (Choose two.)

- A. Custom
- B. Economy
- C. Optimized
- D. Standard

Answer: BD

Explanation:

Reference: <https://community.snowflake.com/s/article/Snowflake-Visualizing-Warehouse-Performance>

NEW QUESTION 26

- (Exam Topic 1)

What privileges are required to create a task?

- A. The global privilege create task is required to create a new task.
- B. Tasks are created at the Application level and can only be created by the Account Admin role.
- C. Many Snowflake DDLs are metadata operations only, and create task DDL can be executed without virtual warehouse requirement or task specific grants.
- D. The role must have access to the target schema and the create task privilege on the schema itself.

Answer: D

Explanation:

All tasks in a simple tree must have the same task owner (i.e. a single role must have the OWNERSHIP privilege on all of the tasks in the tree). All tasks in a simple tree must exist in the same schema.

<https://docs.snowflake.com/en/user-guide/tasks-intro.html#creating-tasks>

NEW QUESTION 29

- (Exam Topic 1)

Which item in the Data Warehouse migration process does not apply in Snowflake? (Select two)

- A. Migrate Users
- B. Migrate Schemas
- C. Migrate Indexes
- D. Build the Data pipeline

Answer: CD

NEW QUESTION 34

- (Exam Topic 1)

What are the three layers that make up Snowflake's architecture? Choose 3 answer

- A. Compute
- B. Tri-Secret Secure
- C. Storage
- D. Cloud Services

Answer: ACD

Explanation:

Reference: <https://docs.snowflake.com/en/user-guide/intro-key-concepts.html>

NEW QUESTION 38

- (Exam Topic 1)

True or False: Snowflake's Global Services Layer gathers and maintains statistics on all columns in all micro-partitions.

- A. True
- B. False

Answer: A

Explanation:

Snowflake is a single, integrated platform delivered as-a-service. It features storage, compute, and global services layers that are physically separated but logically integrated.

NEW QUESTION 41

- (Exam Topic 1)

True or False: Each worksheet in the Snowflake Web Interface (UI) can be associated with different roles, databases, schemas, and Virtual Warehouses.

- A. True
- B. False

Answer: A

Explanation:

Reference: <https://docs.snowflake.com/en/user-guide/ui-worksheet.html>

NEW QUESTION 45

- (Exam Topic 1)

True or False: It is possible to load data into Snowflake without creating a named File Format object.

- A. True
- B. False

Answer: A

Explanation:

Reference: <https://docs.snowflake.com/en/user-guide/data-load-external-tutorial-create-file-format.html>

NEW QUESTION 46

- (Exam Topic 1)

The PUT command: (Choose two.)

- A. Automatically creates a File Format object
- B. Automatically uses the last Stage created
- C. Automatically compresses files using Gzip
- D. Automatically encrypts files

Answer: CD

Explanation:

Reference: <https://docs.snowflake.com/en/sql-reference/sql/put.html>

NEW QUESTION 50

- (Exam Topic 1)

Which of the following roles is recommended to be used to create and manage users and roles?

- A. SYSADMIN
- B. SECURITYADMIN
- C. PUBLIC
- D. ACCOUNTADMIN

Answer: B

Explanation:

<https://docs.snowflake.com/en/user-guide/security-access-control-overview.html>

"Security admin: Role that can manage any object grant globally, as well as create, monitor, and manage users and roles"

NEW QUESTION 52

- (Exam Topic 1)

Which of the following statements are true of Snowflake releases: (Choose two.)

- A. They happen approximately weekly
- B. They roll up and release approximately monthly, but customers can request early release application
- C. During a release, new customer requests/queries/connections transparently move over to the newer version
- D. A customer is assigned a 30 minute window (that can be moved anytime within a week) during which the system will be unavailable and customer is upgraded

Answer: AC

Explanation:

<https://docs.snowflake.com/en/user-guide/intro-releases.html>

NEW QUESTION 56

- (Exam Topic 1)

True or False: It is possible to query data from an Internal or named External stage without loading the data into Snowflake.

- A. True
- B. False

Answer: A

NEW QUESTION 57

- (Exam Topic 1)

True or False: You can resize a Virtual Warehouse while queries are running.

- A. True
- B. False

Answer: A

Explanation:

Reference: <https://docs.snowflake.com/en/user-guide/warehouses-tasks.html>

NEW QUESTION 61

- (Exam Topic 1)

True or False: Bulk unloading of data from Snowflake supports the use of a SELECT statement.

- A. True
- B. False

Answer: A

Explanation:

Reference: <https://docs.snowflake.com/en/user-guide-data-unload.html>

NEW QUESTION 64

- (Exam Topic 1)

True or False: Snowflake allows its customers to directly access the micro-partition files that make up its tables.

- A. True
- B. False

Answer: B

NEW QUESTION 69

- (Exam Topic 1)

True or False: Reader Accounts incur no additional Compute costs to the Data Provider since they are simply reading the shared data without making changes.

- A. True
- B. False

Answer: B

Explanation:

Reference: <https://interworks.com/blog/bdu/2020/02/05/zero-to-snowflake-secure-data-sharing/>

NEW QUESTION 70

- (Exam Topic 1)

Which of the following languages can be used to implement Snowflake User Defined Functions (UDFs)? Choose 2 answers

- A. Java
- B. JavaScript
- C. SQL
- D. Python

Answer: BC

Explanation:

Reference: <https://docs.snowflake.com/en/sql-reference/user-defined-functions.html>

NEW QUESTION 75

- (Exam Topic 1)

On which of the following cloud platforms can a Snowflake account be hosted? (Choose three.)

- A. Amazon Web Services
- B. Private Virtual Cloud
- C. Oracle Cloud
- D. Microsoft Azure Cloud
- E. Google Cloud Platform
- F. Alibaba Cloud

Answer: ADE

NEW QUESTION 77

- (Exam Topic 1)

Which statement best describes Snowflake tables?

- A. Snowflake tables are logical representations of underlying physical data
- B. Snowflake tables are the physical instantiation of data loaded into Snowflake
- C. Snowflake tables require that clustering keys be defined to perform optimally
- D. Snowflake tables are owned by a user

Answer: A

Explanation:

Reference: <https://docs.snowflake.com/en/user-guide/tables-micro-partitions.html>

NEW QUESTION 79

- (Exam Topic 1)

When a Pipe is recreated using the CREATE OR REPLACE PIPE command:

- A. The Pipe load history is reset to empty
- B. The REFRESH parameter is set to TRUE
- C. Previously loaded files will be ignored
- D. All of the above

Answer: A

Explanation:

<https://docs.snowflake.com/en/user-guide/data-load-snowpipe-manage.html#load-history> "When a pipe is recreated, the load history is dropped."

NEW QUESTION 82

- (Exam Topic 1)

Which of the following are valid approaches to loading data into a Snowflake table? Select all that apply.

- A. Bulk copy from an External Stage
- B. Continuous load using Snowpipe REST API
- C. The Snowflake Web Interface (UI) data loading wizard
- D. Bulk copy from an Internal Stage

Answer: ABC

Explanation:

Reference: <https://docs.snowflake.com/en/user-guide/data-load-overview.html>

NEW QUESTION 83

- (Exam Topic 1)

Snowflake provides two mechanisms to reduce data storage costs for short-lived tables. These mechanisms are:
Choose 2 answers

- A. Temporary Tables
- B. Transient Tables
- C. Provisional Tables
- D. Permanent Tables

Answer: AB

Explanation:

Reference: <https://docs.snowflake.com/en/user-guide/tables-storage-considerations.html>

NEW QUESTION 88

- (Exam Topic 1)

True or False: You can query the files in an External Stage directly without having to load the data into a table.

- A. True
- B. False

Answer: A

Explanation:

Reference: <https://docs.snowflake.com/en/user-guide/tables-external-intro.html>

External tables are read-only, therefore no DML operations can be performed on them; however, external tables can be used for query and join operations. Views can be created against external tables.

NEW QUESTION 89

- (Exam Topic 1)

Which of the following terms best describes Snowflake's database architecture?

- A. Columnar shared nothing
- B. Shared disk
- C. Multi-cluster, shared data
- D. Cloud-native shared memory

Answer: C

Explanation:

<https://www.snowflake.com/product/architecture/>

Built from the ground up for the cloud, Snowflake's unique multi-cluster shared data architecture delivers the performance, scale, elasticity, and concurrency today's organizations require.

NEW QUESTION 91

- (Exam Topic 1)

Which of the following statements describes a benefit of Snowflake's separation of compute and storage?
(Choose all that apply.)

- A. Growth of storage and compute are tightly coupled together
- B. Storage expands without the requirement to add more compute
- C. Compute can be scaled up or down without the requirement to add more storage
- D. Multiple compute clusters can access stored data without contention

Answer: BCD

Explanation:

Reference:

<https://towardsdatascience.com/why-you-are-throwing-money-away-if-your-cloud-data-warehouse-doesnt-separate-storage-and-compute-65d2dffd450f>

NEW QUESTION 92

- (Exam Topic 1)

What is the minimum duration charged when starting a virtual warehouse?

- A. 1 second
- B. 1 minute
- C. 1 hour
- D. 1 day

Answer: B

NEW QUESTION 97

- (Exam Topic 1)

True or False: A table in Snowflake can only be queried using the Virtual Warehouse that was used to load the data.

- A. True
- B. False

Answer: B

NEW QUESTION 101

- (Exam Topic 1)

True or False: A Virtual Warehouse consumes Snowflake credits even when inactive.

- A. True
- B. False

Answer: B

Explanation:

Reference: <https://docs.snowflake.com/en/user-guide/warehouses-multiclust.html>

NEW QUESTION 102

- (Exam Topic 1)

Which of the following statements are true of Virtual Warehouses? (Choose all that apply.)

- A. Customers can change the size of the Warehouse after creation
- B. A Warehouse can be resized while running
- C. A Warehouse can be configured to suspend after a period of inactivity
- D. A Warehouse can be configured to auto-resume when new queries are submitted

Answer: ABCD

Explanation:

Reference: <https://docs.snowflake.com/en/user-guide/warehouses-multiclust.html>

NEW QUESTION 104

- (Exam Topic 1)

Snowflake is designed for which type of workloads? (Choose two.)

- A. OLAP (Analytics) workloads
- B. OLTP (Transactional) workloads
- C. Concurrent workloads
- D. On-premise workloads

Answer: AC

Explanation:

Reference: <https://blog.couchbase.com/its-the-workload-stupid/>

<https://www.quora.com/Can-Snowflake-be-used-for-an-OLTP-system-or-is-it-only-best-suited-for-warehousing>

NEW QUESTION 109

- (Exam Topic 1)

What is the maximum compressed row size in Snowflake?

- A. 8KB
- B. 16MB
- C. 50MB
- D. 4000GB

Answer: B

Explanation:

MAX size for compressed data for semi-structured data type is also 16 MB. That means if our table has a semi-structured data type column with 16MB data other columns will have NULL data.

NEW QUESTION 113

- (Exam Topic 1)

True or False: Multi_Factor Authentication (MFA) in Snowflake is only supported in conjunction with single Sign-on (sso).

- A. True
- B. False

Answer: B

Explanation:

Reference: <https://docs.snowflake.com/en/user-guide/admin-security-fed-auth-use.html>

NEW QUESTION 115

- (Exam Topic 1)

True or False: The user has to specify which cluster a query will run on in multi-clustering Warehouse.

- A. True
- B. False

Answer: B

Explanation:

Reference: <https://docs.snowflake.com/en/user-guide/warehouses-multiclust.html>

NEW QUESTION 118

- (Exam Topic 1)

Which of the following are main sections of the top navigation of the Snowflake web Interface (UI)?

- A. Database
- B. Tables
- C. Warehouses
- D. Worksheets

Answer: ACD

Explanation:

Reference: <https://docs.snowflake.com/en/user-guide/snowflake-manager.html>

NEW QUESTION 119

- (Exam Topic 1)

True or False: It is possible to unload structured data to semi-structured formats such as JSON and parquet.

- A. True
- B. False

Answer: A

Explanation:

Reference: <https://docs.snowflake.com/en/user-guide/data-unload-prepare.html>

NEW QUESTION 122

- (Exam Topic 2)

Where would a Snowflake user find information about query activity from 90 days ago?

- A. Account__usage . query history view
- B. account__usage.query__history__archive View
- C. information__schema . cruery_history view
- D. information__schema - query history_by_session view

Answer: A

NEW QUESTION 124

- (Exam Topic 2)

How often are encryption keys automatically rotated by Snowflake?

- A. 30 Days
- B. 60 Days
- C. 90 Days
- D. 365 Days

Answer: A

Explanation:

All Snowflake-managed keys are automatically rotated by Snowflake when they are more than 30 days old. Active keys are retired, and new keys are created. When Snowflake determines the retired key is no longer needed, the key is automatically destroyed.

<https://docs.snowflake.com/en/user-guide/security-encryption-manage.html#:~:text=All%20Snowflake%2Dman>

NEW QUESTION 128

- (Exam Topic 2)

During periods of warehouse contention which parameter controls the maximum length of time a warehouse will hold a query for processing?

- A. STATEMENT_TIMEOUT_IN_SECONDS
- B. STATEMENT_QUEUED_TIMEOUT_IN_SECONDS
- C. MAX_CONCURRENCY_LEVEL
- D. QUERY_TIMEOUT_IN_SECONDS

Answer: B

Explanation:

The parameter STATEMENT_QUEUED_TIMEOUT_IN_SECONDS

sets the limit for a query to wait in

the queue in order to get its chance of running on the warehouse. The query will quit after reaching this limit. By default, the value of this parameter is 0 which mean the queries will wait indefinitely in the waiting queue

<https://community.snowflake.com/s/article/Warehouse-Concurrency-and-Statement-Timeout-Parameters#:~:text=>

NEW QUESTION 133

- (Exam Topic 2)

A marketing co-worker has requested the ability to change a warehouse size on their medium virtual warehouse called mktg__WH.

Which of the following statements will accommodate this request?

- A. ALLOW_RESIZE ON WAREHOUSE MKTG__WH TO USER MKTG__LEAD;
- B. GRANT MODIFY ON WAREHOUSE MKTG WH TO ROLE MARKETING;
- C. GRANT MODIFY ON WAREHOUSE MKTG__WH TO USER MKTG__LEAD;
- D. GRANT OPERATE ON WAREHOUSE MKTG WH TO ROLE MARKETING;

Answer: B

NEW QUESTION 136

- (Exam Topic 2)

In which scenarios would a user have to pay Cloud Services costs? (Select TWO).

- A. Compute Credits = 50 Credits Cloud Services = 10
- B. Compute Credits = 80 Credits Cloud Services = 5
- C. Compute Credits = 10 Credits Cloud Services = 9
- D. Compute Credits = 120 Credits Cloud Services = 10
- E. Compute Credits = 200 Credits Cloud Services = 26

Answer: BD

NEW QUESTION 138

- (Exam Topic 2)

What happens when an external or an internal stage is dropped? (Select TWO).

- A. When dropping an external stage, the files are not removed and only the stage is dropped
- B. When dropping an external stage, both the stage and the files within the stage are removed
- C. When dropping an internal stage, the files are deleted with the stage and the files are recoverable
- D. When dropping an internal stage, the files are deleted with the stage and the files are not recoverable
- E. When dropping an internal stage, only selected files are deleted with the stage and are not recoverable

Answer: AC

NEW QUESTION 142

- (Exam Topic 2)

When reviewing the load for a warehouse using the load monitoring chart, the chart indicates that a high volume of Queries are always queuing in the warehouse. According to recommended best practice, what should be done to reduce the Queue volume? (Select TWO).

- A. Use multi-clustered warehousing to scale out warehouse capacity.
- B. Scale up the warehouse size to allow Queries to execute faster.
- C. Stop and start the warehouse to clear the queued queries
- D. Migrate some queries to a new warehouse to reduce load
- E. Limit user access to the warehouse so fewer queries are run against it.

Answer: AD

NEW QUESTION 144

- (Exam Topic 2)

What is a responsibility of Snowflake's virtual warehouses?

- A. Infrastructure management
- B. Metadata management
- C. Query execution
- D. Query parsing and optimization
- E. Management of the storage layer

Answer: C

NEW QUESTION 149

- (Exam Topic 2)

The fail-safe retention period is how many days?

- A. 1 day
- B. 7 days
- C. 45 days
- D. 90 days

Answer: B

Explanation:

Reference: <https://docs.snowflake.com/en/user-guide/data-failsafe.html>

NEW QUESTION 153

- (Exam Topic 2)

A company's security audit requires generating a report listing all Snowflake logins (e.g.. date and user) within the last 90 days. Which of the following statements will return the required information?

- A. `SELECT LAST_SUCCESS_LOGIN, LOGIN_NAME FROM ACCOUNT_USAGE.USERS;`
- B. `SELECT EVENT_TIMESTAMP, USER_NAME FROM table(information_schema.login_history_by_user())`
- C. `SELECT EVENT_TIMESTAMP, USER_NAME FROM ACCOUNT_USAGE.ACCESS_HISTORY;`
- D. `SELECT EVENT_TIMESTAMP, USER_NAME FROM ACCOUNT_USAGE.LOGIN_HISTORY;`

Answer: D

NEW QUESTION 156

- (Exam Topic 2)

Will data cached in a warehouse be lost when the warehouse is resized?

- A. Possibly, if the warehouse is resized to a smaller size and the cache no longer fits.
- B. Ye
- C. because the compute resource is replaced in its entirety with a new compute resource.
- D. N
- E. because the size of the cache is independent from the warehouse size
- F. Ye
- G. became the new compute resource will no longer have access to the cache encryption key

Answer: A

NEW QUESTION 161

- (Exam Topic 2)

Which of the following conditions must be met in order to return results from the results cache? (Select TWO).

- A. The user has the appropriate privileges on the objects associated with the query
- B. Micro-partitions have been reclustered since the query was last run
- C. The new query is run using the same virtual warehouse as the previous query
- D. The query includes a User Defined Function (UDF)
- E. The query has been run within 24 hours of the previously-run query

Answer: AE

NEW QUESTION 164

- (Exam Topic 2)

Which Snowflake objects track DML changes made to tables, like inserts, updates, and deletes?

- A. Pipes
- B. Streams
- C. Tasks
- D. Procedures

Answer: B

Explanation:

[https://dataterrain.com/how-to-change-tracking-using-table-streams-in-snowflake/#:~:text=A%20stream%20is%](https://dataterrain.com/how-to-change-tracking-using-table-streams-in-snowflake/#:~:text=A%20stream%20is%20)

NEW QUESTION 167

- (Exam Topic 2)

Which command is used to unload data from a Snowflake table into a file in a stage?

- A. COPY INTO
- B. GET
- C. WRITE
- D. EXTRACT INTO

Answer: A

Explanation:

<https://docs.snowflake.com/en/user-guide/data-unload-snowflake.html#:~:text=Your%20User%20Stage-,Use%20>

NEW QUESTION 169

- (Exam Topic 2)

A user has unloaded data from Snowflake to a stage

Which SQL command should be used to validate which data was loaded into the stage?

- A. list @file__stage
- B. show @file__stage
- C. view @file__stage
- D. verify @file__stage

Answer: A

NEW QUESTION 174

- (Exam Topic 2)

What happens when a virtual warehouse is resized?

- A. When increasing the size of an active warehouse the compute resource for all running and queued queries on the warehouse are affected
- B. When reducing the size of a warehouse the compute resources are removed only when they are no longer being used to execute any current statements.
- C. The warehouse will be suspended while the new compute resource is provisioned and will resume automatically once provisioning is complete.
- D. Users who are trying to use the warehouse will receive an error message until the resizing is complete

Answer: B

NEW QUESTION 178

- (Exam Topic 2)

Which of the following objects can be shared through secure data sharing?

- A. Masking policy
- B. Stored procedure
- C. Task
- D. External table

Answer: D

Explanation:

Secure Data Sharing enables sharing selected objects in a database in your account with other Snowflake accounts. The following Snowflake database objects can be shared:

- > Tables
- > External tables
- > Secure views
- > Secure materialized views
- > Secure UDFs

Snowflake enables the sharing of databases through shares, which are created by data providers and “imported” by data consumers.

<https://docs.snowflake.com/en/user-guide/data-sharing-intro.html#:~:text=Secure%20Data%20Sharing%20enab>

NEW QUESTION 179

- (Exam Topic 2)

What data is stored in the Snowflake storage layer? (Select TWO).

- A. Snowflake parameters
- B. Micro-partitions
- C. Query history
- D. Persisted query results
- E. Standard and secure view results

Answer: BD

NEW QUESTION 183

- (Exam Topic 2)

What are the default Time Travel and Fail-safe retention periods for transient tables?

- A. Time Travel - 1 da
- B. Fail-safe - 1 day
- C. Time Travel - 0 day
- D. Fail-safe - 1 day
- E. Time Travel - 1 da
- F. Fail-safe - 0 days
- G. Transient tables are retained in neither Fail-safe nor Time Travel

Answer: C

Explanation:

<https://docs.snowflake.com/en/user-guide/data-cdp-storage-costs.html#:~:text=Temporary%20and%20Transient>

NEW QUESTION 188

- (Exam Topic 2)

Query compilation occurs in which architecture layer of the Snowflake Cloud Data Platform?

- A. Compute layer
- B. Storage layer
- C. Cloud infrastructure layer
- D. Cloud services layer

Answer: A

Explanation:

For query execution, Snowflake uses the Virtual Warehouse. The query processing layer is separated from the disk storage layer in the Snowflake data architecture. You can use the data from the storage layer to run queries in this layer

<https://www.projectpro.io/article/snowflake-architecture-what-does-snowflake-do/556#:~:text=Query%20Proce>

NEW QUESTION 189

- (Exam Topic 2)

What Snowflake role must be granted for a user to create and manage accounts?

- A. ACCOUNTADMIN
- B. ORGADMIN
- C. SECURITYADMIN
- D. SYSADMIN

Answer: A

Explanation:

<https://docs.snowflake.com/en/user-guide/security-access-control-considerations.html>

NEW QUESTION 192

- (Exam Topic 2)

The Information Schema and Account Usage Share provide storage information for which of the following objects? (Choose three.)

- A. Users
- B. Tables
- C. Databases
- D. Internal Stages

Answer: ABC

NEW QUESTION 194

- (Exam Topic 2)

What is the default character set used when loading CSV files into Snowflake?

- A. UTF-8
- B. UTF-16
- C. ISO S859-1
- D. ANSI_X3.A

Answer: A

Explanation:

[**NEW QUESTION 199**](https://docs.snowflake.com/en/user-guide/intro-summary-loading.html#:~:text=For%20delimited%20files%20(For delimited files (CSV, TSV, etc.), the default character set is UTF-8. To use any other characters sets, you must explicitly specify the encoding to use for loading. For the list of supported character sets, see Supported Character Sets for Delimited Files (in this topic).</p></div><div data-bbox=)

- (Exam Topic 2)

Which account ____ usage views are used to evaluate the details of dynamic data masking? (Select TWO)

- A. ROLES
- B. POLICY_REFERENCES
- C. QUERY_HISTORY
- D. RESOURCE_MONITORS
- E. ACCESS_HISTORY

Answer: BC

Explanation:

<https://docs.snowflake.com/en/user-guide/security-column-ddm-intro.html#:~:text=DESCRIBE%20MASKING>

NEW QUESTION 204

- (Exam Topic 2)

Which of the following Snowflake capabilities are available in all Snowflake editions? (Select TWO)

- A. Customer-managed encryption keys through Tri-Secret Secure
- B. Automatic encryption of all data
- C. Up to 90 days of data recovery through Time Travel
- D. Object-level access control
- E. Column-level security to apply data masking policies to tables and views

Answer: BD

Explanation:

<https://docs.snowflake.com/en/user-guide/intro-editions.html>

NEW QUESTION 206

- (Exam Topic 2)

True or False: When you create a custom role, it is a best practice to immediately grant that role to ACCOUNTADMIN.

- A. True
- B. False

Answer: B

Explanation:

Reference: <https://docs.snowflake.com/en/user-guide/security-access-control-considerations.html>

NEW QUESTION 211

- (Exam Topic 2)

Which of the following describes how clustering keys work in Snowflake?

- A. Clustering keys update the micro-partitions in place with a full sort, and impact the DML operations.
- B. Clustering keys sort the designated columns over time, without blocking DML operations
- C. Clustering keys create a distributed, parallel data structure of pointers to a table's rows and columns
- D. Clustering keys establish a hashed key on each node of a virtual warehouse to optimize joins at run-time

Answer: B

NEW QUESTION 214

- (Exam Topic 2)

Which is the MINIMUM required Snowflake edition that a user must have if they want to use AWS/Azure Privatelink or Google Cloud Private Service Connect?

- A. Standard
- B. Premium
- C. Enterprise
- D. Business Critical

Answer: D

Explanation:

<https://docs.snowflake.com/en/user-guide/privatelink-azure.html>

NEW QUESTION 219

- (Exam Topic 2)

How would you determine the size of the virtual warehouse used for a task?

- A. Root task may be executed concurrently (i.
- B. multiple instances), it is recommended to leave some margins in the execution window to avoid missing instances of execution
- C. Querying (select) the size of the stream content would help determine the warehouse siz
- D. For example, if querying large stream content, use a larger warehouse size
- E. If using the stored procedure to execute multiple SQL statements, it's best to test run the stored procedure separately to size the compute resource first
- F. Since task infrastructure is based on running the task body on schedule, it's recommended to configure the virtual warehouse for automatic concurrency handling using Multi-cluster warehouse (MCW) to match the task schedule

Answer: C

NEW QUESTION 221

- (Exam Topic 2)

True or False: A 4X-Large Warehouse may, at times, take longer to provision than a X-Small Warehouse.

- A. True
- B. False

Answer: A

Explanation:

You can experiment the same with snowflake UI.

NEW QUESTION 224

- (Exam Topic 2)

What is a limitation of a Materialized View?

- A. A Materialized View cannot support any aggregate functions
- B. A Materialized View can only reference up to two tables
- C. A Materialized View cannot be joined with other tables
- D. A Materialized View cannot be defined with a JOIN

Answer: D

Explanation:

There are several limitations to using materialized views:

- A materialized view can query only a single table.
- Joins, including self-joins, are not supported.

NEW QUESTION 227

- (Exam Topic 2)

Which data type can be used to store geospatial data in Snowflake?

- A. Variant
- B. Object
- C. Geometry
- D. Geography

Answer: D

Explanation:

<https://docs.snowflake.com/en/sql-reference/data-types-geospatial.html#:~:text=have%20SRID%3D4326.-,Geos>

NEW QUESTION 232

- (Exam Topic 2)

A virtual warehouse's auto-suspend and auto-resume settings apply to which of the following?

- A. The primary cluster in the virtual warehouse
- B. The entire virtual warehouse
- C. The database in which the virtual warehouse resides
- D. The Queries currently being run on the virtual warehouse

Answer: B

Explanation:

<https://docs.snowflake.com/en/user-guide/warehouses-overview.html#:~:text=Similarly%2C%20auto%2Dresum>

NEW QUESTION 233

- (Exam Topic 2)

When is the result set cache no longer available? (Select TWO)

- A. When another warehouse is used to execute the query
- B. When another user executes the query
- C. When the underlying data has changed
- D. When the warehouse used to execute the query is suspended
- E. When it has been 24 hours since the last query

Answer: CE

NEW QUESTION 236

- (Exam Topic 2)

Which of the following indicates that it may be appropriate to use a clustering key for a table? (Select TWO).

- A. The table contains a column that has very low cardinality
- B. DML statements that are being issued against the table are blocked
- C. The table has a small number of micro-partitions
- D. Queries on the table are running slower than expected
- E. The clustering depth for the table is large

Answer: AE

NEW QUESTION 239

- (Exam Topic 2)

In the query profiler view for a query, which components represent areas that can be used to help optimize query performance? (Select TWO)

- A. Bytes scanned
- B. Bytes sent over the network
- C. Number of partitions scanned
- D. Percentage scanned from cache
- E. External bytes scanned

Answer: AC

NEW QUESTION 241

- (Exam Topic 2)

What are two ways to create and manage Data Shares in Snowflake? (Choose two.)

- A. Via the Snowflake Web Interface (UI)
- B. Via the data_share=true parameter
- C. Via SQL commands
- D. Via Virtual Warehouses

Answer: AC

Explanation:

Reference: <https://docs.snowflake.com/en/user-guide/data-sharing-provider.html>

NEW QUESTION 244

- (Exam Topic 2)

What is the recommended file sizing for data loading using Snowpipe?

- A. A compressed file size greater than 100 MB, and up to 250 MB
- B. A compressed file size greater than 100 GB, and up to 250 GB
- C. A compressed file size greater than 10 MB, and up to 100 MB
- D. A compressed file size greater than 1 GB, and up to 2 GB

Answer: A

Explanation:

<https://www.phdata.io/blog/how-to-optimize-snowpipe-data-load/#:~:text=Snowpipe%20is%20typically%20use>

NEW QUESTION 247

- (Exam Topic 3)

Which command should be used to load data from a file, located in an external stage, into a table in Snowflake?

- A. INSERT
- B. PUT
- C. GET
- D. COPY

Answer: D

NEW QUESTION 251

- (Exam Topic 3)

Which of the following is an example of an operation that can be completed without requiring compute, assuming no queries have been executed previously?

- A. SELECT SUM (ORDER_AMT) FROM SALES;
- B. SELECT AVG(ORDER_QTY) FROM SALES;
- C. SELECT MIN(ORDER_AMT) FROM SALES;
- D. SELECT ORDER_AMT * ORDER_QTY FROM SALES;

Answer: B

NEW QUESTION 254

- (Exam Topic 3)

Where is Snowflake metadata stored?

- A. Within the data files
- B. In the virtual warehouse layer
- C. In the cloud services layer
- D. In the remote storage layer

Answer: B

Explanation:

Reference:

<https://docs.snowflake.com/en/user-guide/querying-metadata.html#:~:text=Snowflake%20automatically%20gen>

NEW QUESTION 257

- (Exam Topic 3)

When cloning a database, what is cloned with the database? (Choose two.)

- A. Privileges on the database
- B. Existing child objects within the database
- C. Future child objects within the database
- D. Privileges on the schemas within the database
- E. Only schemas and tables within the database

Answer: BE

NEW QUESTION 260

- (Exam Topic 3)

The is the minimum Fail-safe retention time period for transient tables?

- A. 1 day
- B. 7 days
- C. 12 hours
- D. 0 days

Answer: D

NEW QUESTION 265

- (Exam Topic 3)

A single user of a virtual warehouse has set the warehouse to auto-resume and auto-suspend after 10 minutes. The warehouse is currently suspended and the user performs the following actions:

- * 1. Runs a query that takes 3 minutes to complete
- * 2. Leaves for 15 minutes
- * 3. Returns and runs a query that takes 10 seconds to complete
- * 4. Manually suspends the warehouse as soon as the last query was completed

When the user returns, how much billable compute time will have been consumed?

- A. 4 minutes
- B. 10 minutes
- C. 14 minutes
- D. 24 minutes

Answer: C

NEW QUESTION 266

- (Exam Topic 3)

What are the responsibilities of Snowflake's Cloud Service layer? (Choose three.)

- A. Authentication
- B. Resource management
- C. Virtual warehouse caching
- D. Query parsing and optimization
- E. Query execution
- F. Physical storage of micro-partitions

Answer: ADE

NEW QUESTION 270

- (Exam Topic 3)

What is the minimum Snowflake edition that has column-level security enabled?

- A. Standard
- B. Enterprise
- C. Business Critical
- D. Virtual Private Snowflake

Answer: B

NEW QUESTION 274

- (Exam Topic 3)

What are supported file formats for unloading data from Snowflake? (Choose three.)

- A. XML
- B. JSON
- C. Parquet
- D. ORC
- E. AVRO
- F. CSV

Answer: BCF

NEW QUESTION 275

- (Exam Topic 3)

What happens to the shared objects for users in a consumer account from a share, once a database has been created in that account?

- A. The shared objects are transferred.
- B. The shared objects are copied.
- C. The shared objects become accessible.
- D. The shared objects can be re-shared.

Answer: B

NEW QUESTION 278

- (Exam Topic 3)

Snowflake supports the use of external stages with which cloud platforms? (Choose three.)

- A. Amazon Web Services
- B. Docker
- C. IBM Cloud
- D. Microsoft Azure Cloud
- E. Google Cloud Platform
- F. Oracle Cloud

Answer: BDE

NEW QUESTION 280

- (Exam Topic 3)

How many days is load history for Snowpipe retained?

- A. 1 day
- B. 7 days
- C. 14 days
- D. 64 days

Answer: C

NEW QUESTION 284

- (Exam Topic 3)

Which of the following is the Snowflake Account_Usage.Metering_History view used for?

- A. Gathering the hourly credit usage for an account

- B. Compiling an account's average cloud services cost over the previous month
- C. Summarizing the throughput of Snowpipe costs for an account
- D. Calculating the funds left on an account's contract

Answer: A

NEW QUESTION 289

- (Exam Topic 3)

What type of query benefits the MOST from search optimization?

- A. A query that uses only disjunction (i.e., OR) predicates
- B. A query that includes analytical expressions
- C. A query that uses equality predicates or predicates that use IN
- D. A query that filters on semi-structured data types

Answer: C

Explanation:

Reference: <https://community.snowflake.com/s/article/Search-Optimization-When-How-To-Use>

NEW QUESTION 291

- (Exam Topic 3)

Which feature allows a user the ability to control the organization of data in a micro-partition?

- A. Range Partitioning
- B. Search Optimization Service
- C. Automatic Clustering
- D. Horizontal Partitioning

Answer: D

NEW QUESTION 295

- (Exam Topic 3)

The bulk data load history that is available upon completion of the COPY statement is stored where and for how long?

- A. In the metadata of the target table for 14 days
- B. In the metadata of the pipe for 14 days
- C. In the metadata of the target table for 64 days
- D. In the metadata of the pipe for 64 days

Answer: A

NEW QUESTION 296

- (Exam Topic 3)

Which statement MOST accurately describes clustering in Snowflake?

- A. The database ACCOUNTADMIN must define the clustering methodology for each Snowflake table.
- B. Clustering is the way data is grouped together and stored within Snowflake micro-partitions.
- C. The clustering key must be included in the COPY command when loading data into Snowflake.
- D. Clustering can be disabled within a Snowflake account.

Answer: B

NEW QUESTION 297

- (Exam Topic 3)

The following JSON is stored in a VARIANT column called src of the CAR_SALES table:

```
{
  "customer": [
    {
      "address": "San Francisco, CA",
      "name": "Jane Doe"
    }
  ],
  "date": "2022-01-28",
  "dealership": "Town Auto Sales",
  "salesperson": {
    "id": "55"
  }
}
```

A user needs to extract the dealership information from the JSON. How can this be accomplished?

- A. select src:dealership from car_sales;
- B. select src.dealership from car_sales;
- C. select src:Dealership from car_sales;
- D. select dealership from car_sales;

Answer: A

NEW QUESTION 299

- (Exam Topic 3)

Which query profile statistics help determine if efficient pruning is occurring? (Choose two.)

- A. Bytes sent over network
- B. Percentage scanned from cache
- C. Partitions total
- D. Bytes spilled to local storage
- E. Partitions scanned

Answer: BE

NEW QUESTION 300

- (Exam Topic 3)

The first user assigned to a new account, ACCOUNTADMIN, should create at least one additional user with which administrative privilege?

- A. USERADMIN
- B. PUBLIC
- C. ORGADMIN
- D. SYSADMIN

Answer: D

NEW QUESTION 304

- (Exam Topic 3)

A data provider wants to share data with a consumer who does not have a Snowflake account. The provider creates a reader account for the consumer following these steps:

- * 1. Created a user called "CONSUMER"
- * 2. Created a database to hold the share and an extra-small warehouse to query the data
- * 3. Granted the role PUBLIC the following privileges: Usage on the warehouse, database, and schema, and SELECT on all the objects in the share

Based on this configuration what is true of the reader account?

- A. The reader account will automatically use the Standard edition of Snowflake.
- B. The reader account compute will be billed to the provider account.
- C. The reader account can clone data the provider has shared, but cannot re-share it.
- D. The reader account can create a copy of the shared data using CREATE TABLE AS...

Answer: C

NEW QUESTION 307

- (Exam Topic 3)

How can a row access policy be applied to a table or a view? (Choose two.)

- A. Within the policy DDL
- B. Within the create table or create view DDL
- C. By future APPLY for all objects in a schema
- D. Within a control table
- E. Using the command ALTER <object> ADD ROW ACCESS POLICY <policy>;

Answer: BD

NEW QUESTION 310

- (Exam Topic 3)

Query parsing and compilation occurs in which architecture layer of the Snowflake Cloud Data Platform?

- A. Cloud services layer
- B. Compute layer
- C. Storage layer
- D. Cloud agnostic layer

Answer: B

Explanation:

Reference: <https://www.projectpro.io/article/snowflake-architecture-what-does-snowflake-do/556>

NEW QUESTION 311

- (Exam Topic 3)

Which command should be used to download files from a Snowflake stage to a local folder on a client's machine?

- A. PUT

- B. GET
- C. COPY
- D. SELECT

Answer: B

Explanation:

Reference: <https://docs.snowflake.com/en/sql-reference/sql/get.html>

NEW QUESTION 316

- (Exam Topic 3)

Which of the following are characteristics of security in Snowflake?

- A. Account and user authentication is only available with the Snowflake Business Critical edition.
- B. Support for HIPAA and GDPR compliance is available for UI Snowflake editions.
- C. Periodic rekeying of encrypted data is available with the Snowflake Enterprise edition and higher
- D. Private communication to internal stages is allowed in the Snowflake Enterprise edition and higher.

Answer: C

NEW QUESTION 320

- (Exam Topic 3)

How can a user change which columns are referenced in a view?

- A. Modify the columns in the underlying table
- B. Use the ALTER VIEW command to update the view
- C. Recreate the view with the required changes
- D. Materialize the view to perform the changes

Answer: B

NEW QUESTION 325

- (Exam Topic 3)

How many resource monitors can be assigned at the account level?

- A. 1
- B. 2
- C. 3
- D. 4

Answer: A

NEW QUESTION 328

- (Exam Topic 3)

What is the following SQL command used for? `Select * from table(validate(t1, job_id => '_last'));`

- A. To validate external table files in table t1 across all sessions
- B. To validate task SQL statements against table t1 in the last 14 days
- C. To validate a file for errors before it gets executed using a COPY command
- D. To return errors from the last executed COPY command into table t1 in the current session

Answer: D

NEW QUESTION 332

- (Exam Topic 3)

When publishing a Snowflake Data Marketplace listing into a remote region what should be taken into consideration? (Choose two.)

- A. There is no need to have a Snowflake account in the target region, a share will be created for each user.
- B. The listing is replicated into all selected regions automatically, the data is not.
- C. The user must have the ORGADMIN role available in at least one account to link accounts for replication.
- D. Shares attached to listings in remote regions can be viewed from any account in an organization.
- E. For a standard listing the user can wait until the first customer requests the data before replicating it to the target region.

Answer: AC

NEW QUESTION 336

- (Exam Topic 3)

A company needs to allow some users to see Personally Identifiable Information (PII) while limiting other users from seeing the full value of the PII. Which Snowflake feature will support this?

- A. Row access policies
- B. Data masking policies
- C. Data encryption
- D. Role based access control

Answer: B

NEW QUESTION 339

- (Exam Topic 3)

Which statement describes how Snowflake supports reader accounts?

- A. A reader account can consume data from the provider account that created it and combine it with its own data.
- B. A consumer needs to become a licensed Snowflake customer as data sharing is only supported between Snowflake accounts.
- C. The users in a reader account can query data that has been shared with the reader account and can perform DML tasks.
- D. The SHOW MANAGED ACCOUNTS command will view all the reader accounts that have been created for an account.

Answer: C

NEW QUESTION 340

- (Exam Topic 3)

Which SQL command can be used to see the CREATE definition of a masking policy?

- A. SHOW MASKING POLICIES
- B. DESCRIBE MASKING POLICY
- C. GET_DDL
- D. LIST MASKING POLICIES

Answer: C

NEW QUESTION 345

- (Exam Topic 3)

Network policies can be applied to which of the following Snowflake objects? (Choose two.)

- A. Roles
- B. Databases
- C. Warehouses
- D. Users
- E. Accounts

Answer: AD

NEW QUESTION 349

- (Exam Topic 3)

Which of the following can be used when unloading data from Snowflake? (Choose two.)

- A. When unloading semi-structured data, it is recommended that the STRIP_OUTER_ARRAY option be used.
- B. Use the ENCODING file format option to change the encoding from the default UTF-8.
- C. The OBJECT_CONSTRUCT function can be used to convert relational data to semi-structured data.
- D. By using the SINGLE = TRUE parameter, a single file up to 5 GB in size can be exported to the storage layer.
- E. Use the PARSE_JSON function to ensure structured data will be unloaded into the VARIANT data type.

Answer: AD

NEW QUESTION 350

- (Exam Topic 3)

A user has unloaded data from a Snowflake table to an external stage.

Which command can be used to verify if data has been uploaded to the external stage named my_stage?

- A. view @my_stage
- B. list @my_stage
- C. show @my_stage
- D. display @my_stage

Answer: B

NEW QUESTION 351

- (Exam Topic 3)

Which of the following accurately describes shares?

- A. Tables, secure views, and secure UDFs can be shared
- B. Shares can be shared
- C. Data consumers can clone a new table from a share
- D. Access to a share cannot be revoked once granted

Answer: A

NEW QUESTION 356

- (Exam Topic 3)

What is the default file size when unloading data from Snowflake using the COPY command?

- A. 5 MB
- B. 8 GB
- C. 16 MB

D. 32 MB

Answer: C

NEW QUESTION 357

- (Exam Topic 3)

What is an advantage of using an explain plan instead of the query profiler to evaluate the performance of a query?

- A. The explain plan output is available graphically.
- B. An explain plan can be used to conduct performance analysis without executing a query.
- C. An explain plan will handle queries with temporary tables and the query profiler will not.
- D. An explain plan's output will display automatic data skew optimization information.

Answer: B

NEW QUESTION 359

- (Exam Topic 3)

What are common issues found by using the Query Profile? (Choose two.)

- A. Identifying queries that will likely run very slowly before executing them
- B. Locating queries that consume a high amount of credits
- C. Identifying logical issues with the queries
- D. Identifying inefficient micro-partition pruning
- E. Data spilling to a local or remote disk

Answer: AD

NEW QUESTION 362

- (Exam Topic 3)

Which statements reflect key functionalities of a Snowflake Data Exchange? (Choose two.)

- A. If an account is enrolled with a Data Exchange, it will lose its access to the Snowflake Marketplace.
- B. A Data Exchange allows groups of accounts to share data privately among the accounts.
- C. A Data Exchange allows accounts to share data with third, non-Snowflake parties.
- D. Data Exchange functionality is available by default in accounts using the Enterprise edition or higher.
- E. The sharing of data in a Data Exchange is bidirectional.
- F. An account can be a provider for some datasets and a consumer for others.

Answer: B

NEW QUESTION 363

- (Exam Topic 3)

Which command can be used to load data files into a Snowflake stage?

- A. JOIN
- B. COPY INTO
- C. PUT
- D. GET

Answer: C

NEW QUESTION 368

- (Exam Topic 3)

A running virtual warehouse is suspended.

What is the MINIMUM amount of time that the warehouse will incur charges for when it is restarted?

- A. 1 second
- B. 60 seconds
- C. 5 minutes
- D. 60 minutes

Answer: B

NEW QUESTION 371

- (Exam Topic 3)

How are serverless features billed?

- A. Per second multiplied by an automatic sizing for the job
- B. Per minute multiplied by an automatic sizing for the job, with a minimum of one minute
- C. Per second multiplied by the size, as determined by the SERVERLESS_FEATURES_SIZE account parameter
- D. Serverless features are not billed, unless the total cost for the month exceeds 10% of the warehouse credits, on the account

Answer: D

NEW QUESTION 374

- (Exam Topic 3)

What do the terms scale up and scale out refer to in Snowflake? (Choose two.)

- A. Scaling out adds clusters of the same size to a virtual warehouse to handle more concurrent queries.
- B. Scaling out adds clusters of varying sizes to a virtual warehouse.
- C. Scaling out adds additional database servers to an existing running cluster to handle more concurrent queries.
- D. Snowflake recommends using both scaling up and scaling out to handle more concurrent queries.
- E. Scaling up resizes a virtual warehouse so it can handle more complex workloads.
- F. Scaling up adds additional database servers to an existing running cluster to handle larger workloads.

Answer: AE

NEW QUESTION 375

- (Exam Topic 3)

Users are responsible for data storage costs until what occurs?

- A. Data expires from Time Travel
- B. Data expires from Fail-safe
- C. Data is deleted from a table
- D. Data is truncated from a table

Answer: B

NEW QUESTION 379

- (Exam Topic 3)

Which services does the Snowflake Cloud Services layer manage? (Choose two.)

- A. Compute resources
- B. Query execution
- C. Authentication
- D. Data storage
- E. Metadata

Answer: CE

NEW QUESTION 382

- (Exam Topic 3)

What affects whether the query results cache can be used?

- A. If the query contains a deterministic function
- B. If the virtual warehouse has been suspended
- C. If the referenced data in the table has changed
- D. If multiple users are using the same virtual warehouse

Answer: B

NEW QUESTION 385

- (Exam Topic 3)

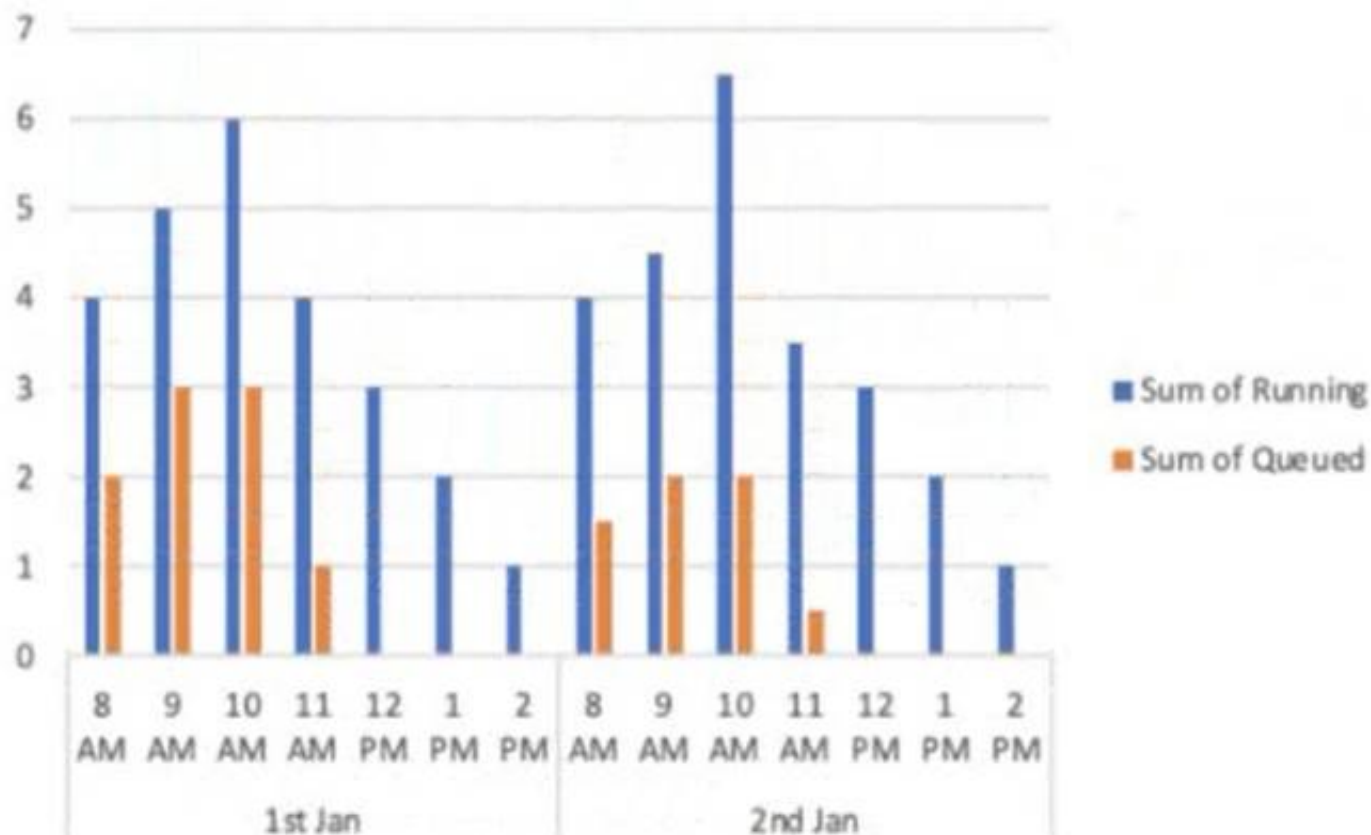
A virtual warehouse is created using the following command:

Create warehouse my_WH with warehouse_size = MEDIUM min_cluster_count = 1

max_cluster_count = 1

auto_suspend = 60 auto_resume = true;

The image below is a graphical representation of the warehouse utilization across two days.



What action should be taken to address this situation?

- A. Increase the warehouse size from Medium to 2XL.
- B. Increase the value for the parameter MAX_CONCURRENCY_LEVEL.
- C. Configure the warehouse to a multi-cluster warehouse.
- D. Lower the value of the parameter STATEMENT_QUEUED_TIMEOUT_IN_SECONDS.

Answer: B

NEW QUESTION 386

- (Exam Topic 3)

Which of the following significantly improves the performance of selective point lookup queries on a table?

- A. Clustering
- B. Materialized Views
- C. Zero-copy Cloning
- D. Search Optimization Service

Answer: A

NEW QUESTION 387

- (Exam Topic 3)

What is true about sharing data in Snowflake? (Choose two.)

- A. The Data Consumer pays for data storage as well as for data computing.
- B. The shared data is copied into the Data Consumer account, so the Consumer can modify it without impacting the base data of the Provider.
- C. A Snowflake account can both provide and consume shared data.
- D. The Provider is charged for compute resources used by the Data Consumer to query the shared data.
- E. The Data Consumer pays only for compute resources to query the shared data.

Answer: BC

NEW QUESTION 390

- (Exam Topic 3)

Which statement is true about running tasks in Snowflake?

- A. A task can be called using a CALL statement to run a set of predefined SQL commands.
- B. A task allows a user to execute a single SQL statement/command using a predefined schedule.
- C. A task allows a user to execute a set of SQL commands on a predefined schedule.
- D. A task can be executed using a SELECT statement to run a predefined SQL command.

Answer: C

NEW QUESTION 394

- (Exam Topic 3)

What internal stages are available in Snowflake? (Choose three.)

- A. Schema stage
- B. Named stage
- C. User stage
- D. Stream stage
- E. Table stage
- F. Database stage

Answer: ABE

NEW QUESTION 395

- (Exam Topic 3)

Which of the following practices are recommended when creating a user in Snowflake? (Choose two.)

- A. Configure the user to be initially disabled.
- B. Force an immediate password change.
- C. Set a default role for the user.
- D. Set the number of minutes to unlock to 15 minutes.
- E. Set the user's access to expire within a specified timeframe.

Answer: AE

NEW QUESTION 396

- (Exam Topic 3)

Why does Snowflake recommend file sizes of 100-250 MB compressed when loading data?

- A. Optimizes the virtual warehouse size and multi-cluster setting to economy mode
- B. Allows a user to import the files in a sequential order
- C. Increases the latency staging and accuracy when loading the data
- D. Allows optimization of parallel operations

Answer: D

NEW QUESTION 400

- (Exam Topic 3)

Which of the following objects can be directly restored using the UNDROP command? (Choose two.)

- A. Schema
- B. View
- C. Internal stage
- D. Table
- E. User
- F. Role

Answer: AD

NEW QUESTION 405

- (Exam Topic 3)

How should a virtual warehouse be configured if a user wants to ensure that additional multi-clusters are resumed with no delay?

- A. Configure the warehouse to a size larger than generally required
- B. Set the minimum and maximum clusters to autoscale
- C. Use the standard warehouse scaling policy
- D. Use the economy warehouse scaling policy

Answer: B

NEW QUESTION 410

- (Exam Topic 3)

What privilege should a user be granted to change permissions for new objects in a managed access schema?

- A. Grant the OWNERSHIP privilege on the schema.
- B. Grant the OWNERSHIP privilege on the database.
- C. Grant the MANAGE GRANTS global privilege.
- D. Grant ALL privileges on the schema.

Answer: C

NEW QUESTION 411

- (Exam Topic 3)

What are advantages clones have over tables created with CREATE TABLE AS SELECT statement? (Choose two.)

- A. The clone always stays in sync with the original table.
- B. The clone has better query performance.
- C. The clone is created almost instantly.
- D. The clone will have time travel history from the original table.
- E. The clone saves space by not duplicating storage.

Answer: CE

NEW QUESTION 414

- (Exam Topic 3)

What versions of Snowflake should be used to manage compliance with Personal Identifiable Information (PII) requirements? (Choose two.)

- A. Custom Edition
- B. Virtual Private Snowflake
- C. Business Critical Edition
- D. Standard Edition
- E. Enterprise Edition

Answer: BC

NEW QUESTION 419

- (Exam Topic 3)

Which Snowflake layer is always leveraged when accessing a query from the result cache?

- A. Metadata
- B. Data Storage
- C. Compute
- D. Cloud Services

Answer: D

NEW QUESTION 424

- (Exam Topic 3)

Which database objects can be shared with the Snowflake secure data sharing feature? (Choose two.)

- A. Files
- B. External tables
- C. Secure User-Defined Functions (UDFs)
- D. Sequences
- E. Streams

Answer: BC

NEW QUESTION 426

- (Exam Topic 3)

Which command sets the Virtual Warehouse for a session?

- A. COPY WAREHOUSE FROM <<config file>>;
- B. SET WAREHOUSE = <<warehouse name>>;
- C. USE WAREHOUSE <<warehouse name>>;
- D. USE VIRTUAL_WAREHOUSE <<warehouse name>>;

Answer: C

Explanation:

Reference: <https://docs.snowflake.com/en/user-guide/warehouses-tasks.html>

NEW QUESTION 431

- (Exam Topic 3)

Which URL type allows users to access unstructured data without authenticating into Snowflake or passing an authorization token?

- A. Pre-signed URL
- B. Scoped URL
- C. Signed URL
- D. File URL

Answer: C

NEW QUESTION 435

- (Exam Topic 3)

What happens to historical data when the retention period for an object ends?

- A. The data is cloned into a historical object.
- B. The data moves to Fail-safe
- C. Time Travel on the historical data is dropped.
- D. The object containing the historical data is dropped.

Answer: D

NEW QUESTION 439

- (Exam Topic 3)

When loading data into Snowflake via Snowpipe what is the compressed file size recommendation?

- A. 10-50 MB
- B. 100-250 MB
- C. 300-500 MB
- D. 1000-1500 MB

Answer: B

NEW QUESTION 441

- (Exam Topic 3)

In a Snowflake role hierarchy, what is the top-level role?

- A. SYSADMIN
- B. ORGADMIN
- C. ACCOUNTADMIN
- D. SECURITYADMIN

Answer: B

NEW QUESTION 444

- (Exam Topic 3)

Which commands should be used to grant the privilege allowing a role to select data from all current tables and any tables that will be created later in a schema? (Choose two.)

- A. grant USAGE on all tables in schema DB1.SCHEMA to role MYROLE;
- B. grant USAGE on future tables in schema DB1.SCHEMA to role MYROLE;
- C. grant SELECT on all tables in schema DB1.SCHEMA to role MYROLE;
- D. grant SELECT on future tables in schema DB1.SCHEMA to role MYROLE;
- E. grant SELECT on all tables in database DB1 to role MYROLE;
- F. grant SELECT on future tables in database DB1 to role MYROLE;

Answer: CD

NEW QUESTION 446

- (Exam Topic 3)

Which columns are part of the result set of the Snowflake LATERAL FLATTEN command? (Choose two.)

- A. CONTENT
- B. PATH
- C. BYTE_SIZE
- D. INDEX
- E. DATATYPE

Answer: BC

NEW QUESTION 449

- (Exam Topic 3)

Which of the following objects are contained within a schema? (Choose two.)

- A. Role
- B. Stream
- C. Warehouse
- D. External table
- E. User
- F. Share

Answer: CD

NEW QUESTION 452

- (Exam Topic 3)

What impacts the credit consumption of maintaining a materialized view? (Choose two.)

- A. Whether or not it is also a secure view
- B. How often the underlying base table is queried
- C. How often the base table changes
- D. Whether the materialized view has a cluster key defined
- E. How often the materialized view is queried

Answer: DE

NEW QUESTION 456

- (Exam Topic 3)

What is the SNOWFLAKE.ACCOUNT_USAGE view that contains information about which objects were read by queries within the last 365 days (1 year)?

- A. VIEWS_HISTORY
- B. OBJECT_HISTORY
- C. ACCESS_HISTORY
- D. LOGIN_HISTORY

Answer: C

NEW QUESTION 460

- (Exam Topic 3)

Which Snowflake architectural layer is responsible for a query execution plan?

- A. Compute
- B. Data storage
- C. Cloud services
- D. Cloud provider

Answer: D

NEW QUESTION 464

- (Exam Topic 3)

Which Snowflake tool would be BEST to troubleshoot network connectivity?

- A. SnowCLI
- B. SnowUI
- C. SnowSQL
- D. SnowCD

Answer: D

Explanation:

[https://docs.snowflake.com/en/user-guide/snowcd.html#:~:text=SnowCD%20\(i.e.%20Snowflake%20Connectivi](https://docs.snowflake.com/en/user-guide/snowcd.html#:~:text=SnowCD%20(i.e.%20Snowflake%20Connectivi)

NEW QUESTION 467

- (Exam Topic 3)

What features that are part of the Continuous Data Protection (CDP) feature set in Snowflake do not require additional configuration? (Choose two.)

- A. Row level access policies
- B. Data masking policies
- C. Data encryption
- D. Time Travel
- E. External tokenization

Answer: CD

NEW QUESTION 468

- (Exam Topic 3)

Which of the following describes a Snowflake stored procedure?

- A. They can be created as secure and hide the underlying metadata from the user.
- B. They can only access tables from a single database.
- C. They can contain only a single SQL statement.
- D. They can be created to run with a caller's rights or an owner's rights.

Answer: A

Explanation:

Reference: <https://docs.snowflake.com/en/sql-reference/stored-procedures-overview.html>

NEW QUESTION 472

.....

THANKS FOR TRYING THE DEMO OF OUR PRODUCT

Visit Our Site to Purchase the Full Set of Actual SnowPro-Core Exam Questions With Answers.

We Also Provide Practice Exam Software That Simulates Real Exam Environment And Has Many Self-Assessment Features. Order the SnowPro-Core Product From:

<https://www.2passeasy.com/dumps/SnowPro-Core/>

Money Back Guarantee

SnowPro-Core Practice Exam Features:

- * SnowPro-Core Questions and Answers Updated Frequently
- * SnowPro-Core Practice Questions Verified by Expert Senior Certified Staff
- * SnowPro-Core Most Realistic Questions that Guarantee you a Pass on Your FirstTry
- * SnowPro-Core Practice Test Questions in Multiple Choice Formats and Updatesfor 1 Year