



Paloalto-Networks

Exam Questions PCNSE

Palo Alto Networks Certified Security Engineer (PCNSE) PAN-OS 8.0

NEW QUESTION 1

SAML SLO is supported for which two firewall features? (Choose two.)

- A. GlobalProtect Portal
- B. CaptivePortal
- C. WebUI
- D. CLI

Answer: AB

NEW QUESTION 2

An administrator is defining protection settings on the Palo Alto Networks NGFW to guard against resource exhaustion. When platform utilization is considered, which steps must the administrator take to configure and apply packet buffer protection?

- A. Enable and configure the Packet Buffer protection thresholds.Enable Packet Buffer Protection per ingress zone.
- B. Enable and then configure Packet Buffer thresholdsEnable Interface Buffer protection.
- C. Create and Apply Zone Protection Profiles in all ingress zones.Enable Packet Buffer Protection per ingress zone.
- D. Configure and apply Zone Protection Profiles for all egress zones.Enable Packet Buffer Protection pre egress zone.
- E. Enable per-vsyz Session Threshold alerts and triggers for Packet Buffer Limits.Enable Zone Buffer Protection per zone.

Answer: A

NEW QUESTION 3

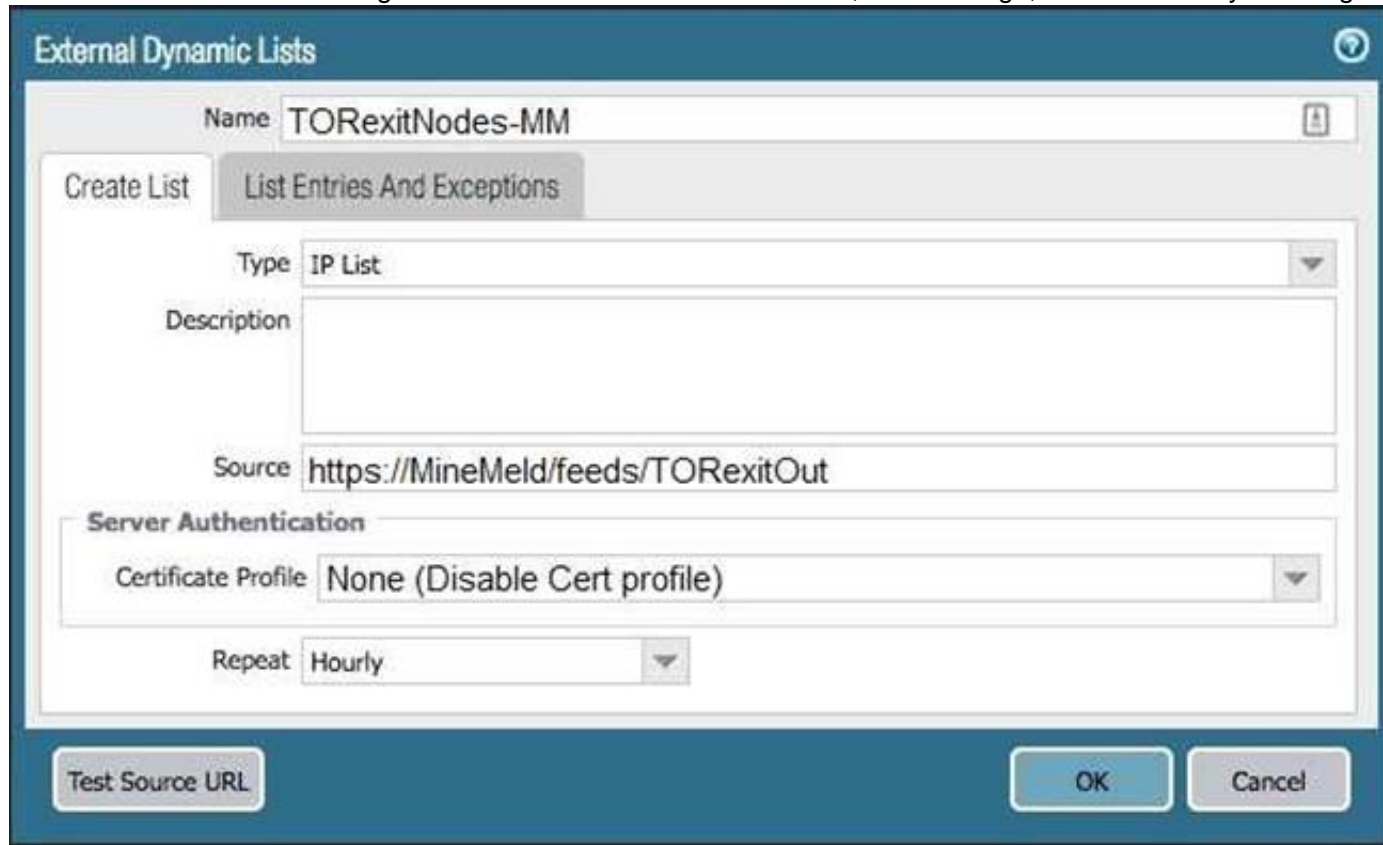
What are the two behavior differences between Highlight Unused Rules and the Rule Usage Hit counter when a firewall is rebooted? (Choose two.)

- A. Rule Usage Hit counter will not be reset
- B. Highlight Unused Rules will highlight all rules.
- C. Highlight Unused Rules will highlight zero rules.
- D. Rule Usage Hit counter will reset.

Answer: AB

NEW QUESTION 4

The firewall is not downloading IP addresses from MineMeld. Based, on the image, what most likely is wrong?



- A. A Certificate Profile that contains the client certificate needs to be selected.
- B. The source address supports only files hosted with an ftp://<address/file>.
- C. External Dynamic Lists do not support SSL connections.
- D. A Certificate Profile that contains the CA certificate needs to be selected.

Answer: D

NEW QUESTION 5

Which is not a valid reason for receiving a decrypt-cert-validation error?

- A. Unsupported HSM
- B. Unknown certificate status
- C. Client authentication
- D. Untrusted issuer

Answer: A

NEW QUESTION 6

Which two methods can be configured to validate the revocation status of a certificate? (Choose two.)

- A. CRL
- B. CRT
- C. OCSP
- D. Cert-Validation-Profile
- E. SSL/TLS Service Profile

Answer: AC

NEW QUESTION 7

An administrator has been asked to configure active/active HA for a pair of Palo Alto Networks NGFWs. The firewall use Layer 3 interfaces to send traffic to a single gateway IP for the pair.

Which configuration will enable this HA scenario?

- A. The two firewalls will share a single floating IP and will use gratuitous ARP to share the floating IP.
- B. Each firewall will have a separate floating IP, and priority will determine which firewall has the primary IP.
- C. The firewalls do not use floating IPs in active/active HA.
- D. The firewalls will share the same interface IP address, and device 1 will use the floating IP if device 0 fails.

Answer: A

NEW QUESTION 8

An administrator has been asked to configure a Palo Alto Networks NGFW to provide protection against worms and trojans. Which Security Profile type will protect against worms and trojans?

- A. Anti-Spyware
- B. WildFire
- C. Vulnerability Protection
- D. Antivirus

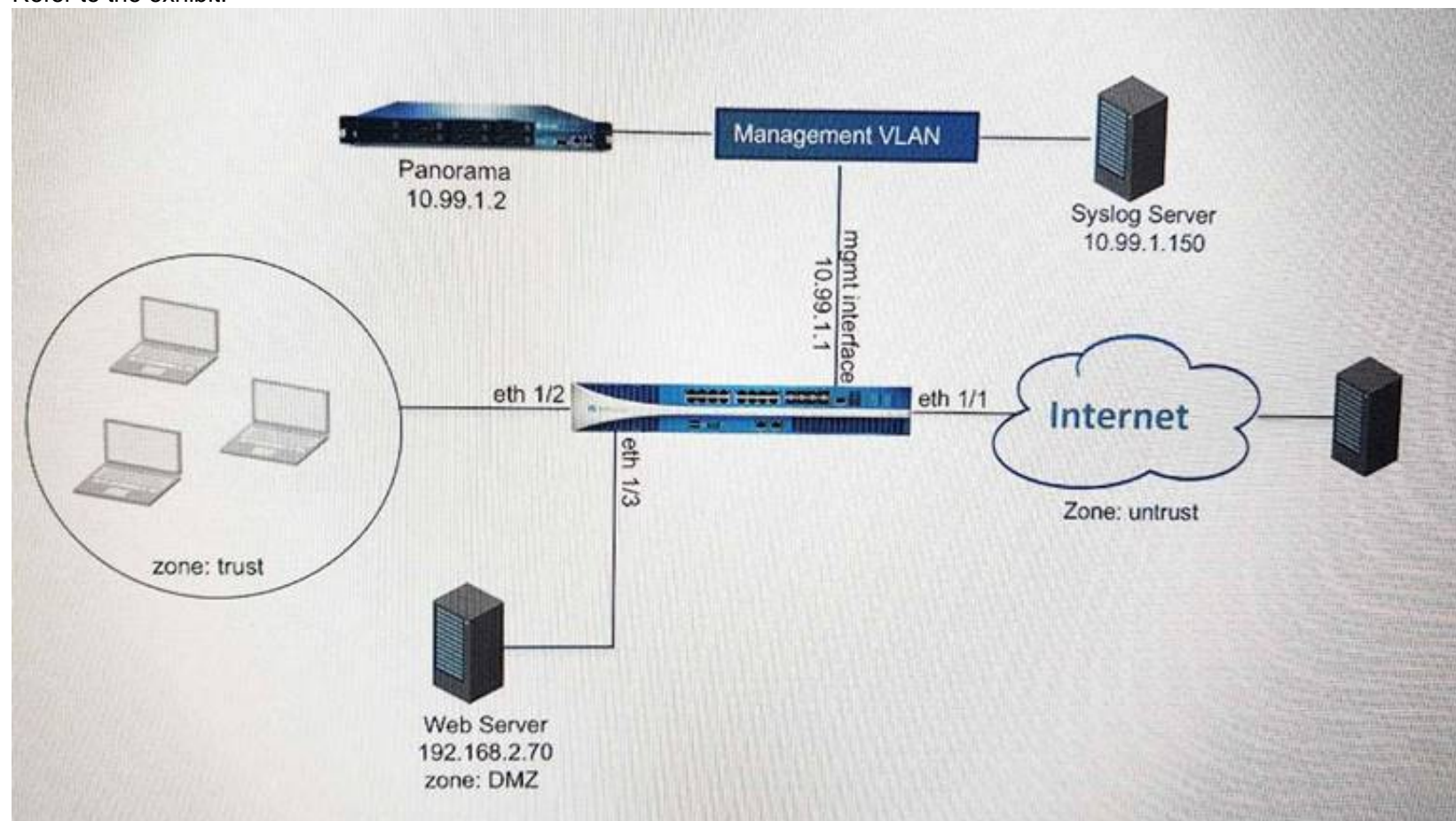
Answer: A

Explanation:

Reference: <https://www.paloaltonetworks.com/documentation/71/pan-os/pan-os/policy/antivirus- profiles>

NEW QUESTION 9

Refer to the exhibit.



An administrator cannot see any of the Traffic logs from the Palo Alto Networks NGFW on Panorama. The configuration problem seems to be on the firewall side. Where is the best place on the Palo Alto Networks NGFW to check whether the configuration is correct?

A)

Panorama Settings

Panorama Servers

10.99.1.21

Receive Timeout for Connection to Panorama (sec) 240

Send Timeout for Connection to Panorama (sec) 240

Retry Count for SSL Send to Panorama 25

☐ **Secure Client Communication**

Certificate Type None

☐ Check Server Identity

B)

Security Policy Rule

General Source User Destination Application Service/URL Category Actions

Action Setting

Action Allow

☐ Send ICMP Unreachable

Log Setting

☒ Log at Session Start

☒ Log at Session End

Log Forwarding None

Profile Setting

Profile Type Profiles

Antivirus None

Vulnerability Protection None

Anti-Spyware None

URL Filtering Filter1

File Blocking None

Data Filtering None

WildFire Analysis None

Other Settings

Schedule None

QoS Marking None

☐ Disable Server Response Inspection

OK Cancel

C)

Syslog Server Profile

Name SyslogProfile1

Servers Custom Log Format

Name	Syslog Server	Transport	Port	Format	Facility
SyslogServer1	192.168.229.17	UDP	514	BSD	LOG_USER

+ Add - Delete

D)

Panorama Settings

Receive Timeout for Connection to Device (sec) 240

Send Timeout for Connection to Device (sec) 240

Retry Count for SSL Send to Device 25

☒ Share Unused Address and Service Objects with Devices

☐ Objects defined in ancestors will take higher precedence

Secure Server Communication

☐ Custom Certificate Only

SSL/TLS Service Profile None

Certificate Profile None

Authorization List

Identifier	Type	Value
0 items		

☐ Authorize Clients Based on Serial Number

☐ Check Authorization List

Connect Wait Time (min) [0 - 44640]

OK

- A. Option A
- B. Option B
- C. Option C
- D. Option D

Answer: D

NEW QUESTION 10

When configuring a GlobalProtect Portal, what is the purpose of specifying an Authentication Profile?

- A. To enable Gateway authentication to the Portal
- B. To enable Portal authentication to the Gateway
- C. To enable user authentication to the Portal
- D. To enable client machine authentication to the Portal

Answer: C

Explanation:

The additional options of Browser and Satellite enable you to specify the authentication profile to use for specific scenarios. Select Browser to specify the authentication profile to use to authenticate a user accessing the portal from a web browser with the intent of downloading the GlobalProtect agent (Windows and Mac). Select Satellite to specify the authentication profile to use to authenticate the satellite.

Reference <https://www.paloaltonetworks.com/documentation/71/pan-os/web-interface-help/globalprotect/network-globalprotect-portals>

NEW QUESTION 10

Which method will dynamically register tags on the Palo Alto Networks NGFW?

- A. Restful API or the VMWare API on the firewall or on the User-ID agent or the read-only domain controller (RODC)
- B. Restful API or the VMware API on the firewall or on the User-ID agent
- C. XML-API or the VMware API on the firewall or on the User-ID agent or the CLI
- D. XML API or the VM Monitoring agent on the NGFW or on the User-ID agent

Answer: D

Explanation:

Reference: <https://www.paloaltonetworks.com/documentation/80/pan-os/pan-os/policy/register-ip-addresses-and-tags-dynamically>

NEW QUESTION 11

To connect the Palo Alto Networks firewall to AutoFocus, which setting must be enabled?

- A. Device>Setup>Services>AutoFocus
- B. Device> Setup>Management >AutoFocus
- C. AutoFocus is enabled by default on the Palo Alto Networks NGFW
- D. Device>Setup>WildFire>AutoFocus
- E. Device>Setup> Management> Logging and Reporting Settings

Answer: B

Explanation:

Reference: <https://www.paloaltonetworks.com/documentation/71/pan-os/pan-os/getting-started/enable-autofocus-threat-intelligence>

"<https://www.paloaltonetworks.com/documentation/71/pan-os/pan-os/getting-started/enable-autofocus-threat-intelligence>"
<https://www.paloaltonetworks.com/documentation/71/pan-os/pan-os/getting-started/enable-autofocus-threat-intelligence>

NEW QUESTION 12

Decrypted packets from the website <https://www.microsoft.com> will appear as which application and service within the Traffic log?

- A. web-browsing and 443
- B. SSL and 80
- C. SSL and 443
- D. web-browsing and 80

Answer: A

NEW QUESTION 15

A user's traffic traversing a Palo Alto Networks NGFW sometimes can reach <http://www.company.com>. At other times the session times out. The NGFW has been configured with a PBF rule that the user's traffic matches when it goes to <http://www.company.com>. How can the firewall be configured automatically disable the PBF rule if the next hop goes down?

- A. Create and add a Monitor Profile with an action of Wait Recover in the PBF rule in question:.
- B. Create and add a Monitor Profile with an action of Fail Over in the PBF rule in question:.
- C. Enable and configure a Link Monitoring Profile for the external interface of the firewall.
- D. Configure path monitoring for the next hop gateway on the default route in the virtual router.

Answer: C

NEW QUESTION 20

A speed/duplex negotiation mismatch is between the Palo Alto Networks management port and the switch port which it connects. How would an administrator configure the interface to 1Gbps?

- A. set deviceconfig interface speed-duplex 1Gbps-full-duplex
- B. set deviceconfig system speed-duplex 1Gbps-duplex
- C. set deviceconfig system speed-duplex 1Gbps-full-duplex
- D. set deviceconfig Interface speed-duplex 1Gbps-half-duplex

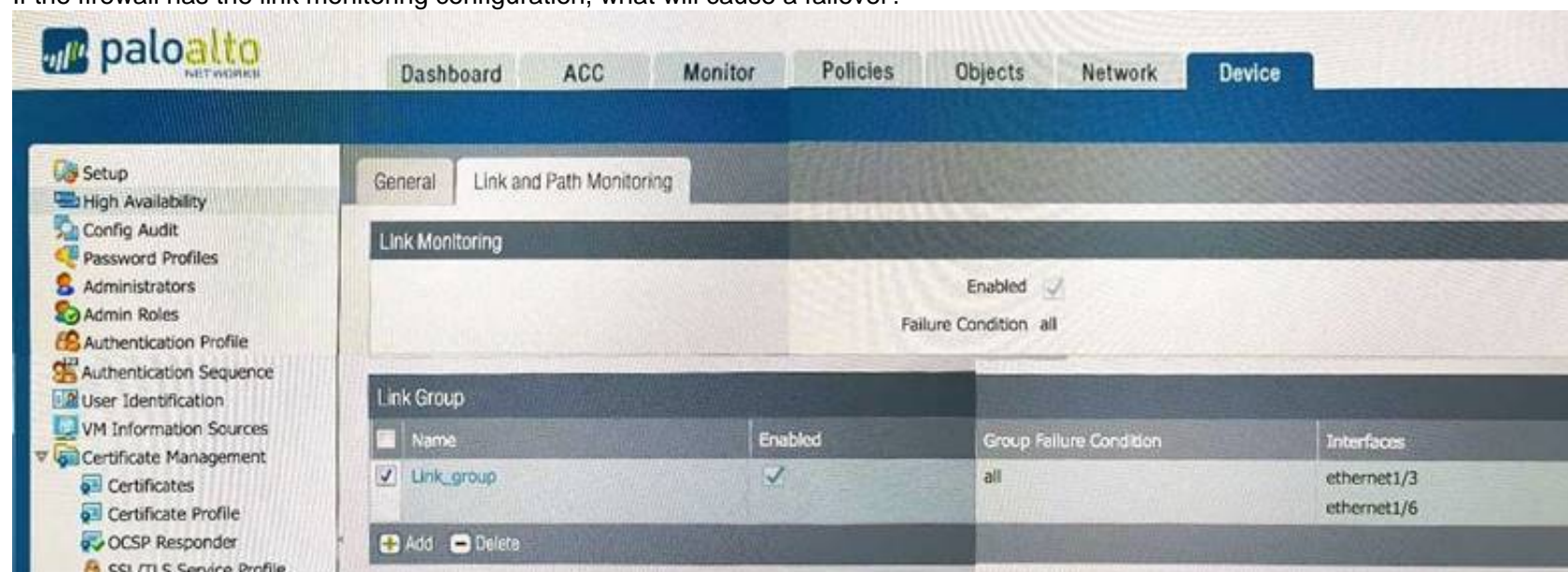
Answer: B

Explanation:

Reference: <https://live.paloaltonetworks.com/t5/Configuration-Articles/How-to-Change-the-Speed-and-Duplex-of-the-Management-Port/ta-p/59034>

NEW QUESTION 23

If the firewall has the link monitoring configuration, what will cause a failover?



- A. ethernet1/3 and ethernet1/6 going down
- B. ethernet1/3 going down
- C. ethernet1/3 or Ethernet1/6 going down
- D. ethernet1/6 going down

Answer: A

NEW QUESTION 27

Which method does an administrator use to integrate all non-native MFA platforms in PAN-OS® software?

- A. Okta
- B. DUO
- C. RADIUS
- D. PingID

Answer: C

NEW QUESTION 28

An administrator needs to optimize traffic to prefer business-critical applications over non-critical applications. QoS natively integrates with which feature to provide service quality?

- A. Port Inspection
- B. Certificate revocation
- C. Content-ID
- D. App-ID

Answer: D

Explanation:

Reference: <https://www.paloaltonetworks.com/documentation/71/pan-os/pan-os/quality-of-service/qos-for-applications-and-users>

NEW QUESTION 33

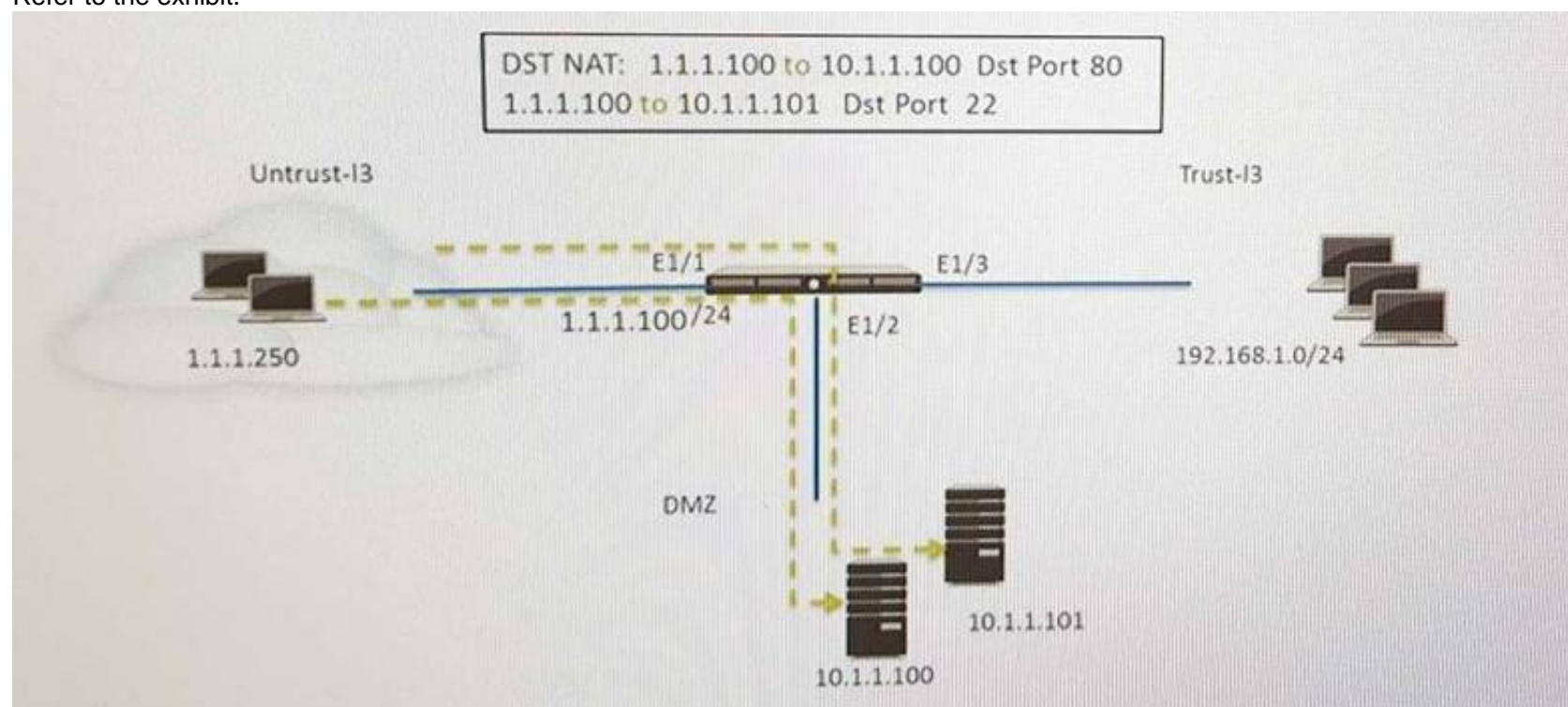
A session in the Traffic log is reporting the application as “incomplete.” What does “incomplete” mean?

- A. The three-way TCP handshake was observed, but the application could not be identified.
- B. The three-way TCP handshake did not complete.
- C. The traffic is coming across UDP, and the application could not be identified.
- D. Data was received but was instantly discarded because of a Deny policy was applied before App-ID could be applied.

Answer: B

NEW QUESTION 38

Refer to the exhibit.



An administrator is using DNAT to map two servers to a single public IP address. Traffic will be steered to the specific server based on the application, where Host A (10.1.1.100) receives HTTP traffic and HOST B (10.1.1.101) receives SSH traffic.)

Which two security policy rules will accomplish this configuration? (Choose two.)

- A. Untrust (Any) to Untrust (10.1.1.1), web-browsing -Allow
- B. Untrust (Any) to Untrust (10.1.1.1), ssh -Allow
- C. Untrust (Any) to DMZ (10.1.1.1), web-browsing -Allow
- D. Untrust (Any) to DMZ (10.1.1.1), ssh -Allow
- E. Untrust (Any) to DMZ (10.1.1.100.10.1.1.101), ssh, web-browsing -Allow

Answer: CD

NEW QUESTION 41

An administrator is using Panorama and multiple Palo Alto Networks NGFWs. After upgrading all devices to the latest PAN-OS® software, the administrator enables log forwarding from the firewalls to Panorama. Pre-existing logs from the firewalls are not appearing in PanoramaA.

Which action would enable the firewalls to send their pre-existing logs to Panorama?

- A. Use the import option to pull logs into Panorama.
- B. A CLI command will forward the pre-existing logs to Panorama.
- C. Use the ACC to consolidate pre-existing logs.
- D. The log database will need to be exported from the firewalls and manually imported into Panorama.

Answer: B

NEW QUESTION 42

VPN traffic intended for an administrator's Palo Alto Networks NGFW is being maliciously intercepted and retransmitted by the interceptor. When creating a VPN tunnel, which protection profile can be enabled to prevent this malicious behavior?

- A. Zone Protection
- B. DoS Protection
- C. Web Application
- D. Replay

Answer: A

NEW QUESTION 47

Which Palo Alto Networks VM-Series firewall is valid?

- A. VM-25
- B. VM-800
- C. VM-50
- D. VM-400

Answer: C

Explanation:

Reference: <https://www.paloaltonetworks.com/products/secure-the-network/virtualized-next-generation-firewall/vm-series>

NEW QUESTION 51

Which Security policy rule will allow an admin to block Facebook chat but allow Facebook in general?

- A. Deny application facebook-chat before allowing application facebook
- B. Deny application facebook on top
- C. Allow application facebook on top
- D. Allow application facebook before denying application facebook-chat

Answer: A

Explanation:

Reference: <https://live.paloaltonetworks.com/t5/Configuration-Articles/Failed-to-Block-Facebook-Chat-Consistently/ta-p/115673>

NEW QUESTION 54

A client is concerned about resource exhaustion because of denial-of-service attacks against their DNS servers. Which option will protect the individual servers?

- A. Enable packet buffer protection on the Zone Protection Profile.
- B. Apply an Anti-Spyware Profile with DNS sinkholing.
- C. Use the DNS App-ID with application-default.
- D. Apply a classified DoS Protection Profile.

Answer: A

NEW QUESTION 58

An administrator has users accessing network resources through Citrix XenApp 7.x. Which User-ID mapping solution will map multiple users who are using Citrix to connect to the network and access resources?

- A. Client Probing
- B. Terminal Services agent
- C. GlobalProtect
- D. Syslog Monitoring

Answer: B

NEW QUESTION 59

In a virtual router, which object contains all potential routes?

- A. MIB
- B. RIB
- C. SIP
- D. FIB

Answer: B

Explanation:

Reference: https://www.google.com/url?sa=t&rct=j&q=&esrc=s&source=web&cd=10&ved=0ahUKEwiOkbfYzPzXAhVnEJoKHcwVCg4QFghiMAk&url=https%3A%2F%2Flive.paloaltonetworks.com%2Ftwzvq79624%2Fattachments%2Ftwzvq79624%2Fdocumentation_tkb%2F487%2F1%2FRoute%2520Redistribution%2520and%2520Filtering%2520TechNote%2520-%2520Rev%2520B.pdf&usg=AOvVaw0H9qgaJK0oI2xjJBNo1Km

NEW QUESTION 63

Which item enables a firewall administrator to see details about traffic that is currently active through the NGFW?

- A. ACC
- B. System Logs
- C. App Scope
- D. Session Browser

Answer: D

NEW QUESTION 67

Which three options are supported in HA Lite? (Choose three.)

- A. Virtual link
- B. Active/passive deployment
- C. Synchronization of IPsec security associations
- D. Configuration synchronization
- E. Session synchronization

Answer: BCD

Explanation:

Reference: <https://www.paloaltonetworks.com/documentation/80/pan-os/web-interface-help/device/device-high-availability/ha-lite>

NEW QUESTION 68

Which tool provides an administrator the ability to see trends in traffic over periods of time, such as threats detected in the last 30 days?

- A. Session Browser
- B. Application Command Center
- C. TCP Dump
- D. Packet Capture

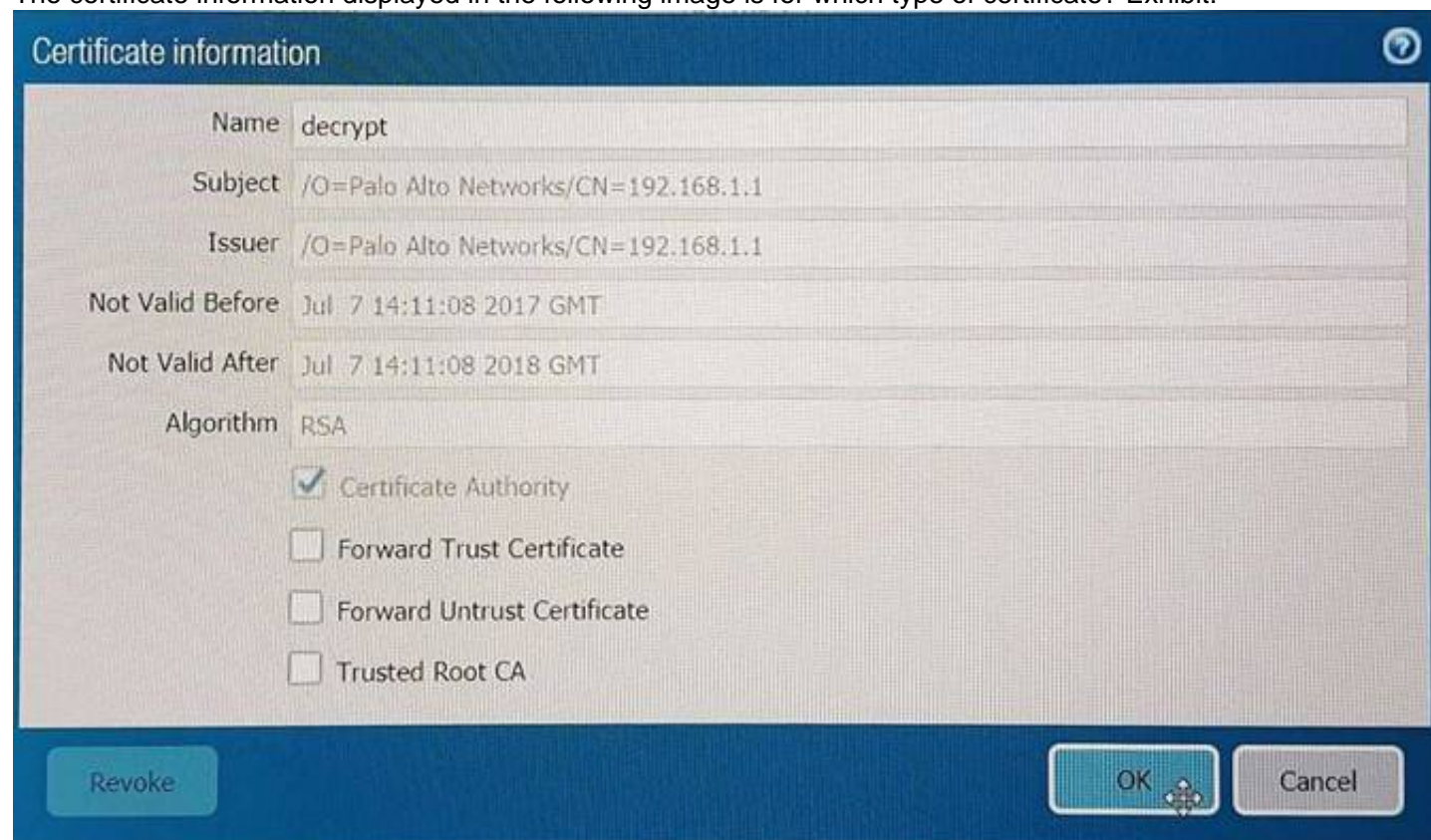
Answer: B

Explanation:

Reference: <https://live.paloaltonetworks.com/t5/Management-Articles/Tips-and-Tricks-How-to-Use-the-Application-Command-Center-ACC/ta-p/67342>

NEW QUESTION 70

The certificate information displayed in the following image is for which type of certificate? Exhibit:



- A. Forward Trust certificate
- B. Self-Signed Root CA certificate
- C. Web Server certificate
- D. Public CA signed certificate

Answer: D

NEW QUESTION 72

Which feature must you configure to prevent users from accidentally submitting their corporate

credentials to a phishing website?

- A. Mastered
- B. Not Mastered

Answer: A

Explanation:

Reference: <https://www.paloaltonetworks.com/documentation/80/pan-os/pan-os/threat-prevention/prevent-credential-phishing>

NEW QUESTION 75

How can a candidate or running configuration be copied to a host external from Panorama?

- A. Commit a running configuration.
- B. Save a configuration snapshot.
- C. Save a candidate configuration.
- D. Export a named configuration snapshot.

Answer: D

Explanation:

Reference:

https://www.paloaltonetworks.com/documentation/71/panorama/panorama_adminguide/administer-panorama/back-up-panorama-and-firewall-configurations

NEW QUESTION 77

The administrator has enabled BGP on a virtual router on the Palo Alto Networks NGFW, but new routes do not seem to be populating the virtual router. Which two options would help the administrator troubleshoot this issue? (Choose two.)

- A. View the System logs and look for the error messages about BGP.
- B. Perform a traffic pcap on the NGFW to see any BGP problems.
- C. View the Runtime Stats and look for problems with BGP configuration.
- D. View the ACC tab to isolate routing issues.

Answer: CD

NEW QUESTION 81

An administrator has enabled OSPF on a virtual router on the NGFW. OSPF is not adding new routes to the virtual router. Which two options enable the administrator to troubleshoot this issue? (Choose two.)

- A. View Runtime Stats in the virtual router.
- B. View System logs.
- C. Add a redistribution profile to forward as BGP updates.
- D. Perform a traffic pcap at the routing stage.

Answer: AB

NEW QUESTION 84

An administrator has been asked to configure a Palo Alto Networks NGFW to provide protection against external hosts attempting to exploit a flaw in an operating system on an internal system. Which Security Profile type will prevent this attack?

- A. Vulnerability Protection
- B. Anti-Spyware
- C. URL Filtering
- D. Antivirus

Answer: A

Explanation:

Reference: <https://www.paloaltonetworks.com/documentation/71/pan-os/web-interface-help/objects/objects-security-profiles-vulnerability-protection>

NEW QUESTION 89

An administrator using an enterprise PKI needs to establish a unique chain of trust to ensure mutual authentication between Panorama and the managed firewalls and Log Collectors.

How would the administrator establish the chain of trust?

- A. Use custom certificates
- B. Enable LDAP or RADIUS integration
- C. Set up multi-factor authentication
- D. Configure strong password authentication

Answer: A

Explanation:

Reference:

https://www.paloaltonetworks.com/documentation/80/panorama/panorama_adminguide/panorama-overview/plan-your-panorama-deployment

NEW QUESTION 92

A web server is hosted in the DMZ and the server is configured to listen for incoming connections on TCP port 443. A Security policies rules allowing access from the Trust zone to the DMZ zone needs to be configured to allow web-browsing access. The web server hosts its contents over HTTP(S). Traffic from Trust to DMZ is being decrypted with a Forward Proxy rule.

Which combination of service and application, and order of Security policy rules, needs to be configured to allow cleartext web- browsing traffic to this server on tcp/443.

- A. Rule #1: application: web-browsing; service: application-default; action: allow Rule #2: application: ssl; service: application-default; action: allow
- B. Rule #1: application: web-browsing; service: service-https; action: allow Rule #2: application: ssl; service: application-default; action: allow
- C. Rule # 1: application: ssl; service: application-default; action: allow Rule #2: application: web-browsing; service: application-default; action: allow
- D. Rule #1: application: web-browsing; service: service-http; action: allow Rule #2: application: ssl; service: application-default; action: allow

Answer: A

NEW QUESTION 97

A global corporate office has a large-scale network with only one User-ID agent, which creates a bottleneck near the User-ID agent server. Which solution in PAN-OS® software would help in this case?

- A. application override
- B. Virtual Wire mode
- C. content inspection
- D. redistribution of user mappings

Answer: D

Explanation:

Reference: <https://www.paloaltonetworks.com/documentation/71/pan-os/pan-os/user-id/deploy-user-id-in-a-large-scale-network>

NEW QUESTION 98

An administrator has been asked to create 100 virtual firewalls in a local, on-premise lab environment (not in “the cloud”). Bootstrapping is the most expedient way to perform this task. Which option describes deployment of a bootstrap package in an on-premise virtual environment?

- A. Use config-drive on a USB stick.
- B. Use an S3 bucket with an ISO.
- C. Create and attach a virtual hard disk (VHD).
- D. Use a virtual CD-ROM with an ISO.

Answer: D

Explanation:

Reference: <https://www.paloaltonetworks.com/documentation/71/pan-os/newfeaturesguide/management-features/bootstrapping-firewalls-for-rapid-deployment.html>

NEW QUESTION 101

Which two benefits come from assigning a Decryption Profile to a Decryption policy rule with a “No Decrypt” action? (Choose two.)

- A. Block sessions with expired certificates
- B. Block sessions with client authentication
- C. Block sessions with unsupported cipher suites
- D. Block sessions with untrusted issuers
- E. Block credential phishing

Answer: ABC

Explanation:

Reference: <https://www.paloaltonetworks.com/documentation/71/pan-os/pan-os/decryption/create-a-decryption-profile>

NEW QUESTION 106

Which feature can be configured on VM-Series firewalls?

- A. aggregate interfaces
- B. machine learning
- C. multiple virtual systems
- D. GlobalProtect

Answer: D

NEW QUESTION 108

Which three user authentication services can be modified to provide the Palo Alto Networks NGFW with both usernames and role names? (Choose three.)

- A. TACACS+
- B. Kerberos
- C. PAP
- D. LDAP
- E. SAML
- F. RADIUS

Answer: ADF

NEW QUESTION 110

The firewall determines if a packet is the first packet of a new session or if a packet is part of an existing session using which kind of match?

- A. 5-tuple matchSource IP Address, Destination IP Address, Source Port, Destination Port, Protocol
- B. 7-tuple matchSource IP Address, Destination IP Address, Source Port, Destination Port ,Source User, URL Category and Source Security Zone.
- C. 6-tuple matchSource IP Address, Destination IP Address, Source Port, Destination Port, Protocol and Source Security Zone
- D. 9-tuple matchSource IP Address, Destination IP Address, Source Port, Destination Port, Source User, Source Security Zone, Destination Security Zone, Application and URL Category

Answer: A

NEW QUESTION 112

Which log file can be used to identify SSL decryption failures?

- A. Configuration
- B. Threats
- C. ACC
- D. Traffic

Answer: C

NEW QUESTION 116

An administrator needs to upgrade an NGFW to the most current version of PAN-OS® software. The following is occurring:

- Firewall has Internet connectivity through e1/1.
- Default security rules and security rules allowing all SSL and web-browsing traffic to and from any zone.
- Service route is configured, sourcing update traffic from e1/1.
- A communication error appears in the System logs when updates are performed.
- Download does not complete.

What must be configured to enable the firewall to download the current version of PAN-OS software?

- A. DNS settings for the firewall to use for resolution
- B. scheduler for timed downloads of PAN-OS software
- C. static route pointing application PaloAlto-updates to the update servers
- D. Security policy rule allowing PaloAlto-updates as the application

Answer: D

NEW QUESTION 121

Which three firewall states are valid? (Choose three)

- A. Suspended
- B. Passive
- C. Active
- D. Pending E.Functional

Answer: ABC

NEW QUESTION 123

An administrator has configured a QoS policy rule and a QoS profile that limits the maximum allowable bandwidth for the YouTube application. However , YouTube is consuming more than the maximum bandwidth allotment configured.

Which configuration step needs to be configured to enable QoS?

- A. Enable QoS Data Filtering Profile
- B. Enable QoS monitor
- C. Enable Qos interface
- D. Enable Qos in the interface Management Profile.

Answer: C

NEW QUESTION 127

When configuring the firewall for packet capture, what are the valid stage types?

- A. Receive, management , transmit , and drop
- B. Receive , firewall, send , and non-syn
- C. Receive management , transmit, and non-syn
- D. Receive , firewall, transmit, and drop

Answer: D

NEW QUESTION 132

Which User-ID method maps IP address to usernames for users connecting through a web proxy that has already authenticated the user?

- A. Client Probing

- B. Port mapping
- C. Server monitoring
- D. Syslog listening

Answer: D

NEW QUESTION 137

An administrator just submitted a newly found piece of spyware for WildFire analysis. The spyware passively monitors behavior without the user's knowledge. What is the expected verdict from WildFire?

- A. Gray ware
- B. Malware
- C. Spyware
- D. Phishing

Answer: A

NEW QUESTION 138

Which option enables a Palo Alto Networks NGFW administrator to schedule Application and Threat updates while applying only new content-IDs to traffic?

- A. Select download-and-install.
- B. Select download-and-install, with "Disable new apps in content update" selected.
- C. Select download-only.
- D. Select disable application updates and select "Install only Threat updates"

Answer: C

NEW QUESTION 141

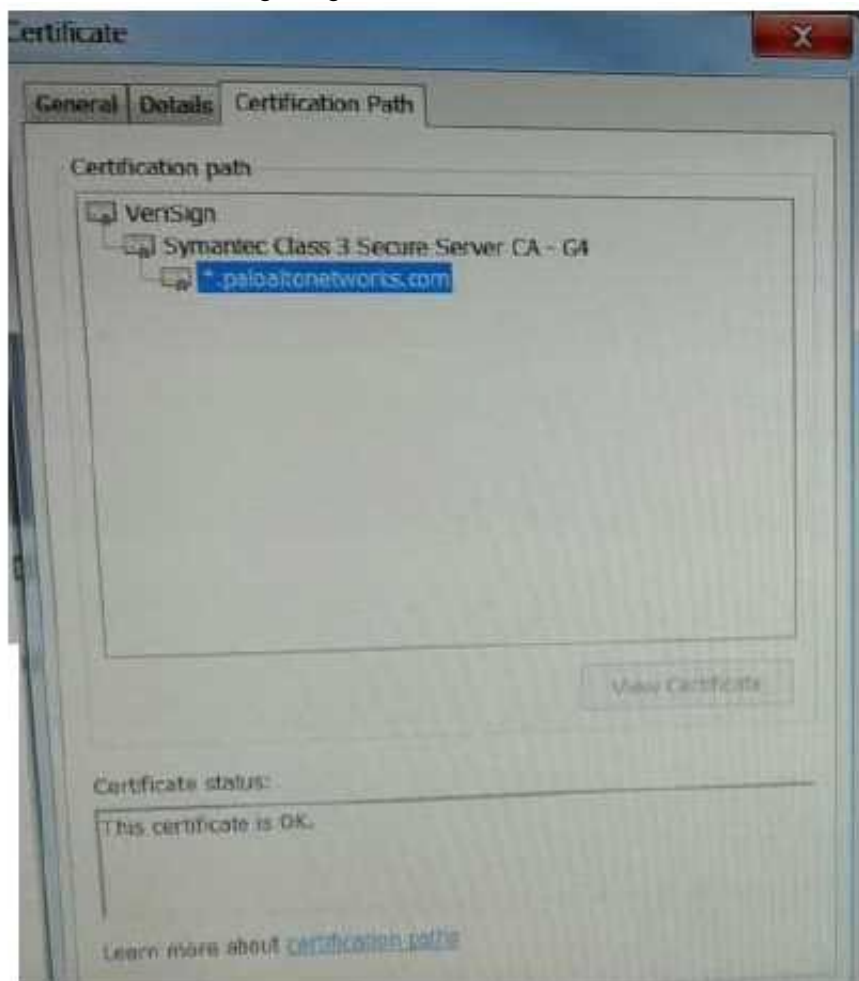
Which two settings can be configured only locally on the firewall and not pushed from a Panorama template or template stack? (Choose two)

- A. HA1 IP Address
- B. Network Interface Type
- C. Master Key
- D. Zone Protection Profile

Answer: AB

NEW QUESTION 146

Based on the following image,



what is the correct path of root, intermediate, and end-user certificate?

- A. Palo Alto Networks > Symantec > VeriSign
- B. Symantec > VeriSign > Palo Alto Networks
- C. VeriSign > Palo Alto Networks > Symantec
- D. VeriSign > Symantec > Palo Alto Networks

Answer: D

NEW QUESTION 149

A host attached to Ethernet 1/4 cannot ping the default gateway. The widget on the dashboard shows Ethernet 1/1 and Ethernet 1/4 to be green. The IP address of Ethernet 1/1 is 192.168.1.7 and the IP address of Ethernet 1/4 is 10.1.1.7. The default gateway is attached to Ethernet 1/1. A default route is properly configured. What can be the cause of this problem?

- A. No Zone has been configured on Ethernet 1/4.
- B. Interface Ethernet 1/1 is in Virtual Wire Mode.
- C. DNS has not been properly configured on the firewall.
- D. DNS has not been properly configured on the host.

Answer: A

NEW QUESTION 151

A logging infrastructure may need to handle more than 10,000 logs per second. Which two options support a dedicated log collector function? (Choose two)

- A. Panorama virtual appliance on ESX(i) only
- B. M-500
- C. M-100 with Panorama installed
- D. M-100

Answer: BC

Explanation:

([httpHYPERLINK "https://live.paloaltonetworks.com/t5/Management-Articles/Panorama-Sizing-and-Design-Guide/ta-p/72181"s://live.paloaltonetworks.com/t5/Management-Articles/Panorama-Sizing- and-Design-Guide/ta-p/72181](https://live.paloaltonetworks.com/t5/Management-Articles/Panorama-Sizing-and-Design-Guide/ta-p/72181))

NEW QUESTION 156

A network engineer has revived a report of problems reaching 98.139.183.24 through vr1 on the firewall. The routing table on this firewall is extensive and complex.

Which CLI command will help identify the issue?

- A. test routing fib virtual-router vr1
- B. show routing route type static destination 98.139.183.24
- C. test routing fib-lookup ip 98.139.183.24 virtual-router vr1
- D. show routing interface

Answer: C

NEW QUESTION 158

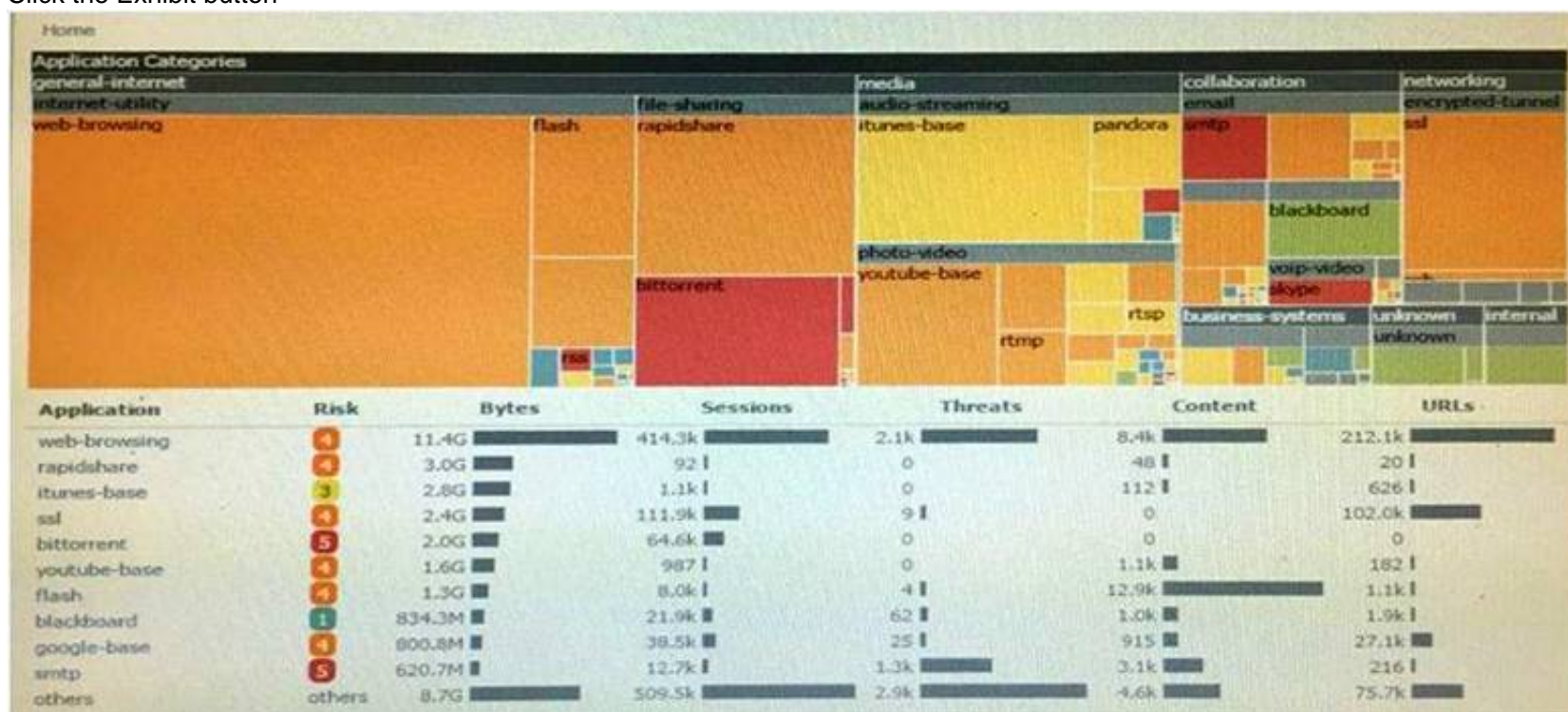
Which two statements are correct for the out-of-box configuration for Palo Alto Networks NGFWs? (Choose two)

- A. The devices are pre-configured with a virtual wire pair out the first two interfaces.
- B. The devices are licensed and ready for deployment.
- C. The management interface has an IP address of 192.168.1.1 and allows SSH and HTTPS connections.
- D. A default bidirectional rule is configured that allows Untrust zone traffic to go to the Trust zone.
- E. The interface are pingable.

Answer: BC

NEW QUESTION 162

Click the Exhibit button



An administrator has noticed a large increase in bittorrent activity. The administrator wants to determine where the traffic is going on the company. What would be the administrator's next step?

- A. Right-Click on the bittorrent link and select Value from the context menu
- B. Create a global filter for bittorrent traffic and then view Traffic logs.
- C. Create local filter for bittorrent traffic and then view Traffic logs.
- D. Click on the bittorrent application link to view network activity

Answer: D

NEW QUESTION 165

Which command can be used to validate a Captive Portal policy?

- A. eval captive-portal policy <criteria>
- B. request cp-policy-eval <criteria>
- C. test cp-policy-match <criteria>
- D. debug cp-policy <criteria>

Answer: C

NEW QUESTION 168

The company's Panorama server (IP 10.10.10.5) is not able to manage a firewall that was recently deployed. The firewall's dedicated management port is being used to connect to the management network.

Which two commands may be used to troubleshoot this issue from the CLI of the new firewall? (Choose two)

- A. test panoramas-connect 10.10.10.5
- B. show panoramas-status
- C. show arp all | match 10.10.10.5
- D. topdump filter "host 10.10.10.5"
- E. debug dataplane packet-diag set capture on

Answer: BD

NEW QUESTION 173

Which three log-forwarding destinations require a server profile to be configured? (Choose three)

- A. SNMP Trap
- B. Email
- C. RADIUS
- D. Kerberos
- E. Panorama
- F. Syslog

Answer: ABF

NEW QUESTION 174

Which two methods can be used to mitigate resource exhaustion of an application server? (Choose two)

- A. Vulnerability Object
- B. DoS Protection Profile
- C. Data Filtering Profile
- D. Zone Protection Profile

Answer: BD

NEW QUESTION 178

The IT department has received complaints about VoIP call jitter when the sales staff is making or receiving calls. QoS is enabled on all firewall interfaces, but there is no QoS policy written in the rulebase. The IT manager wants to find out what traffic is causing the jitter in real time when a user reports the jitter.

Which feature can be used to identify, in real time, the applications taking up the most bandwidth?

- A. QoS Statistics
- B. Applications Report
- C. Application Command Center (ACC)
- D. QoS Log

Answer: A

NEW QUESTION 180

A firewall administrator has completed most of the steps required to provision a standalone Palo Alto Networks Next-Generation Firewall. As a final step, the administrator wants to test one of the security policies.

Which CLI command syntax will display the rule that matches the test?

- A. test security -policy- match source <ip_address> destination <IP_address> destination port <port number> protocol <protocol number>
- B. show security rule source <ip_address> destination <IP_address> destination port <port number> protocol <protocol number>
- C. test security rule source <ip_address> destination <IP_address> destination port <port number> protocol <protocol number>
- D. show security-policy-match source <ip_address> destination <IP_address> destination port <port number> protocol <protocol number> test security-policy-match source

Answer: A

Explanation:

test security-policy-match source <source IP> destination <destination IP> protocol <protocol number>

<https://live.paloaltonetworks.com/t5/Management-Articles/How-to-Test-Which-Security-Policy-Applies-to-a-Traffic-Flow/ta-p/53693>

NEW QUESTION 184

A company has a web server behind a Palo Alto Networks next-generation firewall that it wants to make accessible to the public at 1.1.1.1. The company has decided to configure a destination NAT Policy rule.

Given the following zone information:

- DMZ zone: DMZ-L3
- Public zone: Untrust-L3
- Guest zone: Guest-L3
- Web server zone: Trust-L3
- Public IP address (Untrust-L3): 1.1.1.1
- Private IP address (Trust-L3): 192.168.1.50

What should be configured as the destination zone on the Original Packet tab of NAT Policy rule?

- A. Untrust-L3
- B. DMZ-L3
- C. Guest-L3
- D. Trust-L3

Answer: A

NEW QUESTION 186

Company.com has an in-house application that the Palo Alto Networks device doesn't identify correctly. A Threat Management Team member has mentioned that this in-house application is very sensitive and all traffic being identified needs to be inspected by the Content-ID engine.

Which method should company.com use to immediately address this traffic on a Palo Alto Networks device?

- A. Create a custom Application without signatures, then create an Application Override policy that includes the source, Destination, Destination Port/Protocol and Custom Application of the traffic.
- B. Wait until an official Application signature is provided from Palo Alto Networks.
- C. Modify the session timer settings on the closest referenced application to meet the needs of the in-house application
- D. Create a Custom Application with signatures matching unique identifiers of the in-house application traffic

Answer: D

NEW QUESTION 189

A network security engineer is asked to provide a report on bandwidth usage. Which tab in the ACC provides the information needed to create the report?

- A. Blocked Activity
- B. Bandwidth Activity
- C. Threat Activity
- D. Network Activity

Answer: D

NEW QUESTION 192

A network administrator uses Panorama to push security policies to managed firewalls at branch offices. Which policy type should be configured on Panorama if the administrators at the branch office sites to override these products?

- A. Pre Rules
- B. Post Rules
- C. Explicit Rules
- D. Implicit Rules

Answer: A

NEW QUESTION 195

Click the Exhibit button below,

Exhibit Window							
			Source			Destination	
	Name	Tags	Zone/Interface	Address	User	Address	Application
1	PBF1	none	Trust-L3	192.168.10.0/24	any	172.16.10.0/24	any
2	PBF2	none	Trust-L3	192.168.10.0/24	any	172.16.10.0/24	any
3	PBF3	none	Trust-L3	192.168.10.0/24	Will	172.16.10.0/24	any

Forwarding				
Service	Action	Egress I/F	Next Hop	Enforce Symmetric Return
any	forward	ethernet1/2.2	172.20.20.1	false
service-http	forward	ethernet1/3.2	172.20.30.1	false
service-https	forward	ethernet1/3.3	172.20.40.1	false

A firewall has three PBF rules and a default route with a next hop of 172.20.10.1 that is configured in the default VR. A user named Will has a PC with a 192.168.10.10 IP address. He makes an HTTPS connection to 172.16.10.20. Which is the next hop IP address for the HTTPS traffic from Will's PC?

- A. 172.20.30.1
- B. 172.20.40.1
- C. 172.20.20.1
- D. 172.20.10.1

Answer: C

NEW QUESTION 197

Which three function are found on the dataplane of a PA-5050? (Choose three)

- A. Protocol Decoder
- B. Dynamic routing
- C. Management
- D. Network Processing
- E. Signature Match

Answer: BDE

NEW QUESTION 199

What are three possible verdicts that WildFire can provide for an analyzed sample? (Choose three)

- A. Clean
- B. Benign
- C. Adware
- D. Suspicious
- E. Grayware
- F. Malware

Answer: BEF

Explanation:

[https://www.paloaltonetworks.com/documentation/70/pan-HYPERLINK "https://www.paloaltonetworks.com/documentation/70/pan-os/newfeaturesguide/wildfire-features/wildfire-grayware-verdict"os/newfeaturesguide/wildfire-features/wildfire-grayware-verdict](https://www.paloaltonetworks.com/documentation/70/pan-HYPERLINK \)

NEW QUESTION 203

Which Security Policy Rule configuration option disables antivirus and anti-spyware scanning of server-to-client flows only?

- A. Disable Server Response Inspection
- B. Apply an Application Override
- C. Disable HIP Profile
- D. Add server IP Security Policy exception

Answer: A

NEW QUESTION 205

A company.com wants to enable Application Override. Given the following screenshot:



Which two statements are true if Source and Destination traffic match the Application Override policy? (Choose two)

- A. Traffic that matches "rtp-base" will bypass the App-ID and Content-ID engines.
- B. Traffic will be forced to operate over UDP Port 16384.
- C. Traffic utilizing UDP Port 16384 will now be identified as "rtp-base".
- D. Traffic utilizing UDP Port 16384 will bypass the App-ID and Content-ID engines.

Answer: AC

NEW QUESTION 209

When is it necessary to activate a license when provisioning a new Palo Alto Networks firewall?

- A. When configuring Certificate Profiles
- B. When configuring GlobalProtect portal
- C. When configuring User Activity Reports
- D. When configuring Antivirus Dynamic Updates

Answer: D

NEW QUESTION 210

What are two prerequisites for configuring a pair of Palo Alto Networks firewalls in an active/passive High Availability (HA) pair? (Choose two.)

- A. The firewalls must have the same set of licenses.
- B. The management interfaces must be on the same network.
- C. The peer HA1 IP address must be the same on both firewalls.
- D. HA1 should be connected to HA1. Either directly or with an intermediate Layer 2 device.

Answer: AD

NEW QUESTION 213

People are having intermittent quality issues during a live meeting via web application.

- A. Use QoS profile to define QoS Classes
- B. Use QoS Classes to define QoS Profile
- C. Use QoS Profile to define QoS Classes and a QoS Policy
- D. Use QoS Classes to define QoS Profile and a QoS Policy

Answer: C

NEW QUESTION 217

Which URL Filtering Security Profile action logs the URL Filtering category to the URL Filtering log?

- A. Log
- B. Alert
- C. Allow
- D. Default

Answer: B

Explanation:

<https://www.paloaltonetworks.com/documentation/70/pan-os/pan-os/url-filtering/url-filtering-profile-actions>

NEW QUESTION 219

Which Panorama feature allows for logs generated by Panorama to be forwarded to an external Security Information and Event Management(SIEM) system?

- A. Panorama Log Settings
- B. Panorama Log Templates
- C. Panorama Device Group Log Forwarding
- D. Collector Log Forwarding for Collector Groups

Answer: A

Explanation:

https://www.paloaltonetworks.com/documentation/61/panorama/panorama_admin[HYPERLINK](#)

"https://www.paloaltonetworks.com/documentation/61/panorama/panorama_adminguide/managing-log-collection/enable-log-forwarding-from-panorama-to-external-destinations"[nguidHYPERLINK](#) "https://www.paloaltonetworks.com/documentation/61/panorama/panorama_adminguide/managing-log-collection/enable-log-forwarding-from-panorama-to-external-destinations"[e/manage-log- collection/enable-log-forwarding-from-panorama-to-external-destinaHYPERLINK](#)

"https://www.paloaltonetworks.com/documentation/61/panorama/panorama_adminguide/managing-log-collection/enable-log-forwarding-from-panorama-to-external-destinations"[tions](#)

NEW QUESTION 220

Which three rule types are available when defining policies in Panorama? (Choose three.)

- A. Pre Rules
- B. Post Rules
- C. Default Rules
- D. Stealth Rules
- E. Clean Up Rules

Answer: ABC

Explanation:

<https://www.paloaltonetworks.com/documentation/71/pan-os/web-interface-help/panorama-web-interface/defining-policies-on-panorama>[rks.com/documentation/71/pan-os/web-](#)

<https://www.paloaltonetworks.com/documentation/71/pan-os/web-interface-help/panorama-web-interface/defining-policies-on-panorama>[face-](#)
<https://www.paloaltonetworks.com/documentation/71/pan-os/web-interface-help/panorama-web-interface/defining-policies-on-panorama>

NEW QUESTION 224

A network security engineer needs to configure a virtual router using IPv6 addresses. Which two routing options support these addresses? (Choose two)

- A. BGP not sure
- B. OSPFv3
- C. RIP
- D. Static Route

Answer: BD

Explanation:

<https://live.paloaltonetworks.com/t5/Management-Articles/Does-PAN-OS-Support-Dynamic-Routing-Protocols-OSPF-or-BGP-with/t5-p/62773>

NEW QUESTION 229

Which CLI command displays the current management plane memory utilization?

- A. > debug management-server show
- B. > show running resource-monitor
- C. > show system info
- D. > show system resources

Answer: D

Explanation:

<https://live.paloaltonetworks.com/t5/Learning-Articles/How-to-Interpret-show-system-resources/t5-p/59364>[HYPERLINK](#) "<https://live.paloaltonetworks.com/t5/Learning-Articles/How-to-Interpret-show-system-resources/t5-p/59364>"[live.paloaltonetworks.com/t5/Learning-Articles/How-to-Interpret-show-system-resources/t5-p/59364](#)

"The command show system resources gives a snapshot of Management Plane (MP) resource utilization including memory and CPU. This is similar to the 'top' command in Linux." <https://live.paloaltonetworks.com/t5/Learning-Articles/How-to-Interpret-show-system-resources/t5-p/59364>[HYPERLINK](#) "<https://live.paloaltonetworks.com/t5/Learning-Articles/How-to-Interpret-show-system-resources/t5-p/59364>"[paloHYPERLINK](#)

"<https://live.paloaltonetworks.com/t5/Learning-Articles/How-to-Interpret-show-system-resources/t5-p/59364>"[altonetworHYPERLINK](#)

"<https://live.paloaltonetworks.com/t5/Learning-Articles/How-to-Interpret-show-system-resources/t5-p/59364>"[ks.com/t5/Learning-Articles/How-to-Interpret-show-system-resources/t5-p/59364](#)

NEW QUESTION 233

Which two logs on the firewall will contain authentication-related information useful for troubleshooting purpose (Choose two)

- A. ms.log
- B. traffic.log
- C. system.log
- D. dp-monitor.log
- E. authd.log

Answer: CE

NEW QUESTION 237

How can a Palo Alto Networks firewall be configured to send syslog messages in a format compatible with non-standard syslog servers?

- A. Enable support for non-standard syslog messages under device management
- B. Check the custom-format check box in the syslog server profile
- C. Select a non-standard syslog server profile
- D. Create a custom log format under the syslog server profile

Answer:

D

NEW QUESTION 241

Which Device Group option is assigned by default in Panorama whenever a new device group is created to manage a Firewall?

- A. Master
- B. Universal
- C. Shared
- D. Global

Answer: C

NEW QUESTION 245

.....

About ExamBible

Your Partner of IT Exam

Found in 1998

ExamBible is a company specialized on providing high quality IT exam practice study materials, especially Cisco CCNA, CCDA, CCNP, CCIE, Checkpoint CCSE, CompTIA A+, Network+ certification practice exams and so on. We guarantee that the candidates will not only pass any IT exam at the first attempt but also get profound understanding about the certificates they have got. There are so many alike companies in this industry, however, ExamBible has its unique advantages that other companies could not achieve.

Our Advances

* 99.9% Uptime

All examinations will be up to date.

* 24/7 Quality Support

We will provide service round the clock.

* 100% Pass Rate

Our guarantee that you will pass the exam.

* Unique Gurantee

If you do not pass the exam at the first time, we will not only arrange FULL REFUND for you, but also provide you another exam of your claim, ABSOLUTELY FREE!

NEW QUESTION 1

SAML SLO is supported for which two firewall features? (Choose two.)

- A. GlobalProtect Portal
- B. CaptivePortal
- C. WebUI
- D. CLI

Answer: AB

NEW QUESTION 2

An administrator is defining protection settings on the Palo Alto Networks NGFW to guard against resource exhaustion. When platform utilization is considered, which steps must the administrator take to configure and apply packet buffer protection?

- A. Enable and configure the Packet Buffer protection thresholds.Enable Packet Buffer Protection per ingress zone.
- B. Enable and then configure Packet Buffer thresholdsEnable Interface Buffer protection.
- C. Create and Apply Zone Protection Profiles in all ingress zones.Enable Packet Buffer Protection per ingress zone.
- D. Configure and apply Zone Protection Profiles for all egress zones.Enable Packet Buffer Protection pre egress zone.
- E. Enable per-vsyz Session Threshold alerts and triggers for Packet Buffer Limits.Enable Zone Buffer Protection per zone.

Answer: A

NEW QUESTION 3

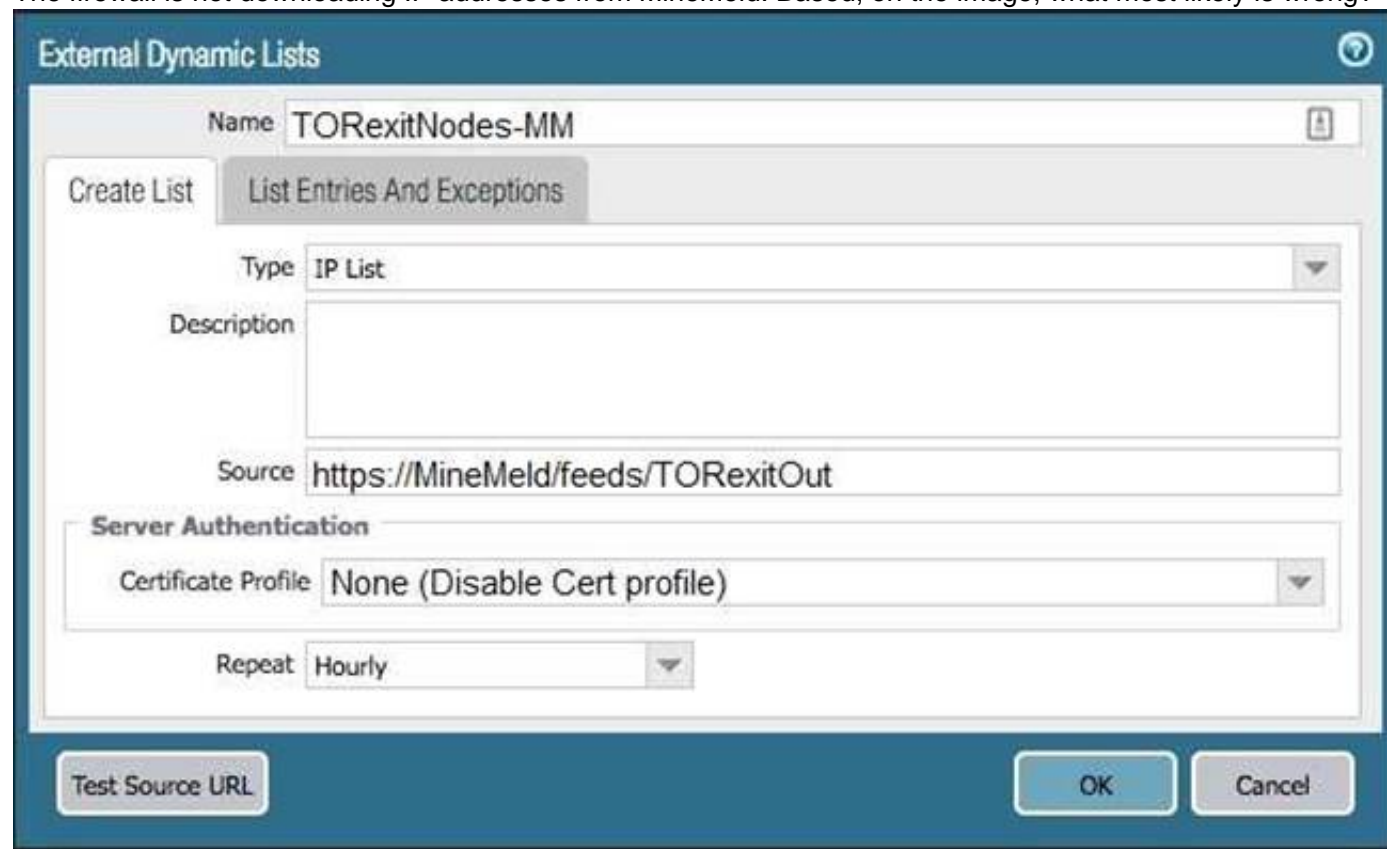
What are the two behavior differences between Highlight Unused Rules and the Rule Usage Hit counter when a firewall is rebooted? (Choose two.)

- A. Rule Usage Hit counter will not be reset
- B. Highlight Unused Rules will highlight all rules.
- C. Highlight Unused Rules will highlight zero rules.
- D. Rule Usage Hit counter will reset.

Answer: AB

NEW QUESTION 4

The firewall is not downloading IP addresses from MineMeld. Based, on the image, what most likely is wrong?



- A. A Certificate Profile that contains the client certificate needs to be selected.
- B. The source address supports only files hosted with an ftp://<address/file>.
- C. External Dynamic Lists do not support SSL connections.
- D. A Certificate Profile that contains the CA certificate needs to be selected.

Answer: D

NEW QUESTION 5

Which is not a valid reason for receiving a decrypt-cert-validation error?

- A. Unsupported HSM
- B. Unknown certificate status
- C. Client authentication
- D. Untrusted issuer

Answer: A

NEW QUESTION 6

Which two methods can be configured to validate the revocation status of a certificate? (Choose two.)

- A. CRL
- B. CRT
- C. OCSP
- D. Cert-Validation-Profile
- E. SSL/TLS Service Profile

Answer: AC

NEW QUESTION 7

An administrator has been asked to configure active/active HA for a pair of Palo Alto Networks NGFWs. The firewall use Layer 3 interfaces to send traffic to a single gateway IP for the pair.

Which configuration will enable this HA scenario?

- A. The two firewalls will share a single floating IP and will use gratuitous ARP to share the floating IP.
- B. Each firewall will have a separate floating IP, and priority will determine which firewall has the primary IP.
- C. The firewalls do not use floating IPs in active/active HA.
- D. The firewalls will share the same interface IP address, and device 1 will use the floating IP if device 0 fails.

Answer: A

NEW QUESTION 8

An administrator has been asked to configure a Palo Alto Networks NGFW to provide protection against worms and trojans. Which Security Profile type will protect against worms and trojans?

- A. Anti-Spyware
- B. WildFire
- C. Vulnerability Protection
- D. Antivirus

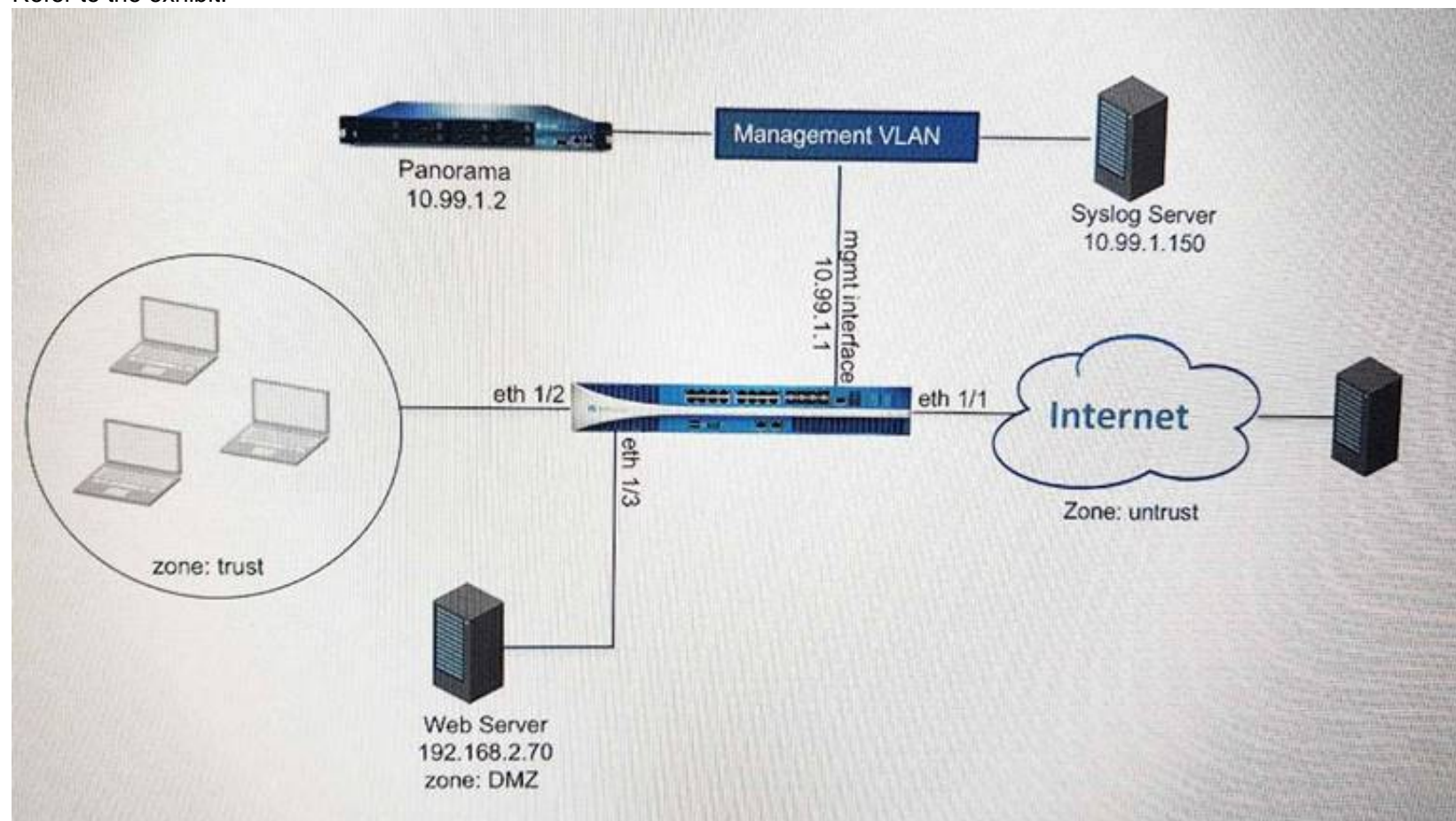
Answer: A

Explanation:

Reference: <https://www.paloaltonetworks.com/documentation/71/pan-os/pan-os/policy/antivirus- profiles>

NEW QUESTION 9

Refer to the exhibit.



An administrator cannot see any of the Traffic logs from the Palo Alto Networks NGFW on Panorama. The configuration problem seems to be on the firewall side. Where is the best place on the Palo Alto Networks NGFW to check whether the configuration is correct?

A)

Panorama Settings

Panorama Servers

10.99.1.21

Receive Timeout for Connection to Panorama (sec) 240

Send Timeout for Connection to Panorama (sec) 240

Retry Count for SSL Send to Panorama 25

☐ **Secure Client Communication**

Certificate Type None

☐ Check Server Identity

B)

Security Policy Rule

General | Source | User | Destination | Application | Service/URL Category | Actions

Action Setting

Action: Allow

☐ Send ICMP Unreachable

Log Setting

☒ Log at Session Start

☒ Log at Session End

Log Forwarding: None

Profile Setting

Profile Type: Profiles

Antivirus: None

Vulnerability Protection: None

Anti-Spyware: None

URL Filtering: Filter1

File Blocking: None

Data Filtering: None

WildFire Analysis: None

Other Settings

Schedule: None

QoS Marking: None

☐ Disable Server Response Inspection

OK Cancel

C)

Syslog Server Profile

Name: SyslogProfile1

Servers Custom Log Format

Name	Syslog Server	Transport	Port	Format	Facility
SyslogServer1	192.168.229.17	UDP	514	BSD	LOG_USER

+ Add - Delete

D)

Panorama Settings

Receive Timeout for Connection to Device (sec) 240

Send Timeout for Connection to Device (sec) 240

Retry Count for SSL Send to Device 25

☒ Share Unused Address and Service Objects with Devices

☐ Objects defined in ancestors will take higher precedence

Secure Server Communication

☐ Custom Certificate Only

SSL/TLS Service Profile None

Certificate Profile None

Authorization List

Identifier	Type	Value
0 items		

☐ Authorize Clients Based on Serial Number

☐ Check Authorization List

Connect Wait Time (min) [0 - 44640]

OK

- A. Option A
- B. Option B
- C. Option C
- D. Option D

Answer: D

NEW QUESTION 10

When configuring a GlobalProtect Portal, what is the purpose of specifying an Authentication Profile?

- A. To enable Gateway authentication to the Portal
- B. To enable Portal authentication to the Gateway
- C. To enable user authentication to the Portal
- D. To enable client machine authentication to the Portal

Answer: C

Explanation:

The additional options of Browser and Satellite enable you to specify the authentication profile to use for specific scenarios. Select Browser to specify the authentication profile to use to authenticate a user accessing the portal from a web browser with the intent of downloading the GlobalProtect agent (Windows and Mac). Select Satellite to specify the authentication profile to use to authenticate the satellite.

Reference <https://www.paloaltonetworks.com/documentation/71/pan-os/web-interface-help/globalprotect/network-globalprotect-portals>

NEW QUESTION 10

Which method will dynamically register tags on the Palo Alto Networks NGFW?

- A. Restful API or the VMWare API on the firewall or on the User-ID agent or the read-only domain controller (RODC)
- B. Restful API or the VMware API on the firewall or on the User-ID agent
- C. XML-API or the VMware API on the firewall or on the User-ID agent or the CLI
- D. XML API or the VM Monitoring agent on the NGFW or on the User-ID agent

Answer: D

Explanation:

Reference: <https://www.paloaltonetworks.com/documentation/80/pan-os/pan-os/policy/register-ip-addresses-and-tags-dynamically>

NEW QUESTION 11

To connect the Palo Alto Networks firewall to AutoFocus, which setting must be enabled?

- A. Device>Setup>Services>AutoFocus
- B. Device> Setup>Management >AutoFocus
- C. AutoFocus is enabled by default on the Palo Alto Networks NGFW
- D. Device>Setup>WildFire>AutoFocus
- E. Device>Setup> Management> Logging and Reporting Settings

Answer: B

Explanation:

Reference: <https://www.paloaltoHYPERLINK>

"<https://www.paloaltonetworks.com/documentation/71/pan-os/pan-os/getting-started/enable-autofocus-threat-intelligence>"[tonetworks.com/documentation/71/pan-os/pan-os/getting-started/enable-autofocus-threat-intelligence](https://www.paloaltonetworks.com/documentation/71/pan-os/pan-os/getting-started/enable-autofocus-threat-intelligence)

NEW QUESTION 12

Decrypted packets from the website <https://www.microsoft.com> will appear as which application and service within the Traffic log?

- A. web-browsing and 443
- B. SSL and 80
- C. SSL and 443
- D. web-browsing and 80

Answer: A

NEW QUESTION 15

A user's traffic traversing a Palo Alto Networks NGFW sometimes can reach <http://www.company.com>. At other times the session times out. The NGFW has been configured with a PBF rule that the user's traffic matches when it goes to <http://www.company.com>. How can the firewall be configured automatically disable the PBF rule if the next hop goes down?

- A. Create and add a Monitor Profile with an action of Wait Recover in the PBF rule in question:.
- B. Create and add a Monitor Profile with an action of Fail Over in the PBF rule in question:.
- C. Enable and configure a Link Monitoring Profile for the external interface of the firewall.
- D. Configure path monitoring for the next hop gateway on the default route in the virtual router.

Answer: C

NEW QUESTION 20

A speed/duplex negotiation mismatch is between the Palo Alto Networks management port and the switch port which it connects. How would an administrator configure the interface to 1Gbps?

- A. set deviceconfig interface speed-duplex 1Gbps-full-duplex
- B. set deviceconfig system speed-duplex 1Gbps-duplex
- C. set deviceconfig system speed-duplex 1Gbps-full-duplex
- D. set deviceconfig Interface speed-duplex 1Gbps-half-duplex

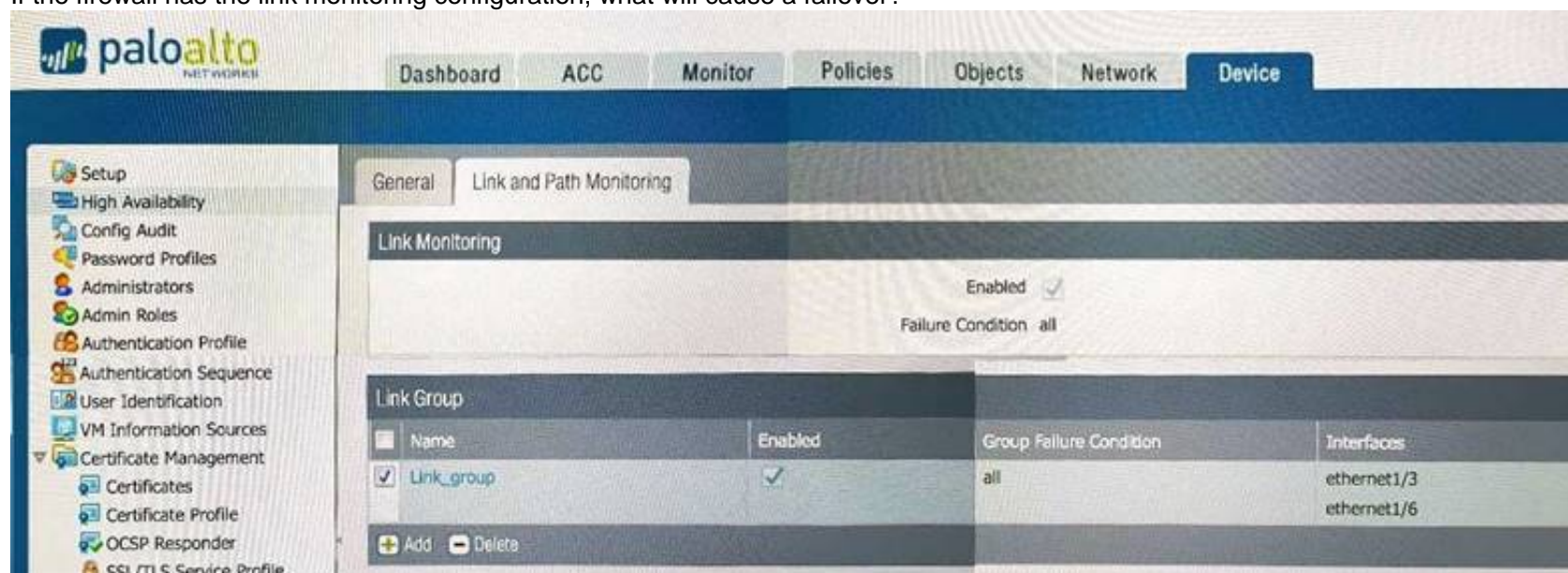
Answer: B

Explanation:

Reference: <https://live.paloaltonetworks.com/t5/Configuration-Articles/How-to-Change-the-Speed-and-Duplex-of-the-Management-Port/ta-p/59034>

NEW QUESTION 23

If the firewall has the link monitoring configuration, what will cause a failover?



- A. ethernet1/3 and ethernet1/6 going down
- B. ethernet1/3 going down
- C. ethernet1/3 or Ethernet1/6 going down
- D. ethernet1/6 going down

Answer: A

NEW QUESTION 27

Which method does an administrator use to integrate all non-native MFA platforms in PAN-OS® software?

- A. Okta
- B. DUO
- C. RADIUS
- D. PingID

Answer: C

NEW QUESTION 28

An administrator needs to optimize traffic to prefer business-critical applications over non-critical applications. QoS natively integrates with which feature to provide service quality?

- A. Port Inspection
- B. Certificate revocation
- C. Content-ID
- D. App-ID

Answer: D

Explanation:

Reference: <https://www.paloaltonetworks.com/documentation/71/pan-os/pan-os/quality-of-service/qos-for-applications-and-users>

NEW QUESTION 33

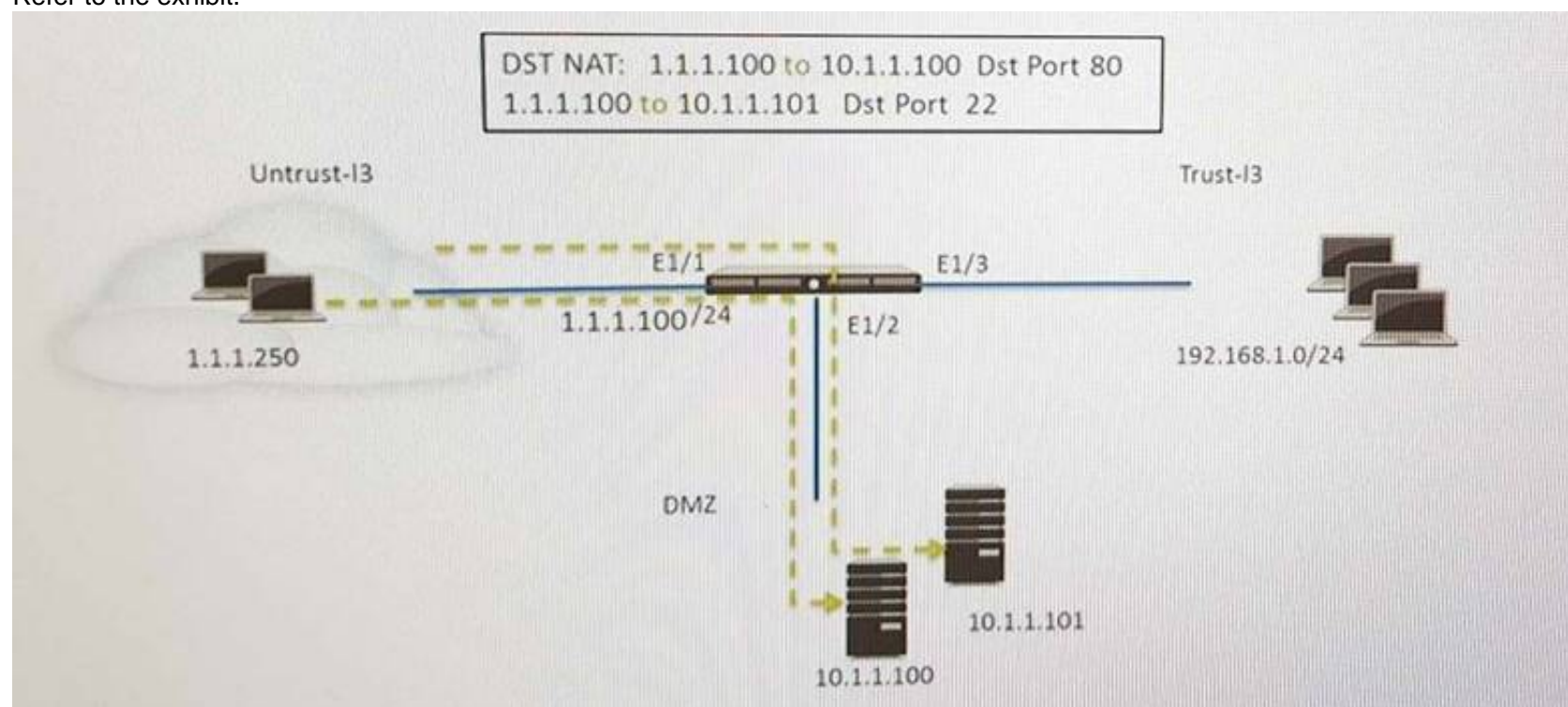
A session in the Traffic log is reporting the application as “incomplete.” What does “incomplete” mean?

- A. The three-way TCP handshake was observed, but the application could not be identified.
- B. The three-way TCP handshake did not complete.
- C. The traffic is coming across UDP, and the application could not be identified.
- D. Data was received but was instantly discarded because of a Deny policy was applied before App-ID could be applied.

Answer: B

NEW QUESTION 38

Refer to the exhibit.



An administrator is using DNAT to map two servers to a single public IP address. Traffic will be steered to the specific server based on the application, where Host A (10.1.1.100) receives HTTP traffic and HOST B (10.1.1.101) receives SSH traffic.)

Which two security policy rules will accomplish this configuration? (Choose two.)

- A. Untrust (Any) to Untrust (10.1.1.1), web-browsing -Allow
- B. Untrust (Any) to Untrust (10.1.1.1), ssh -Allow
- C. Untrust (Any) to DMZ (10.1.1.1), web-browsing -Allow
- D. Untrust (Any) to DMZ (10.1.1.1), ssh -Allow
- E. Untrust (Any) to DMZ (10.1.1.100.10.1.1.101), ssh, web-browsing -Allow

Answer: CD

NEW QUESTION 41

An administrator is using Panorama and multiple Palo Alto Networks NGFWs. After upgrading all devices to the latest PAN-OS® software, the administrator enables log forwarding from the firewalls to Panorama. Pre-existing logs from the firewalls are not appearing in PanoramaA.

Which action would enable the firewalls to send their pre-existing logs to Panorama?

- A. Use the import option to pull logs into Panorama.
- B. A CLI command will forward the pre-existing logs to Panorama.
- C. Use the ACC to consolidate pre-existing logs.
- D. The log database will need to be exported from the firewalls and manually imported into Panorama.

Answer: B

NEW QUESTION 42

VPN traffic intended for an administrator's Palo Alto Networks NGFW is being maliciously intercepted and retransmitted by the interceptor. When creating a VPN tunnel, which protection profile can be enabled to prevent this malicious behavior?

- A. Zone Protection
- B. DoS Protection
- C. Web Application
- D. Replay

Answer: A

NEW QUESTION 47

Which Palo Alto Networks VM-Series firewall is valid?

- A. VM-25
- B. VM-800
- C. VM-50
- D. VM-400

Answer: C

Explanation:

Reference: <https://www.paloaltonetworks.com/products/secure-the-network/virtualized-next-generation-firewall/vm-series>

NEW QUESTION 51

Which Security policy rule will allow an admin to block facebook chat but allow Facebook in general?

- A. Deny application facebook-chat before allowing application facebook
- B. Deny application facebook on top
- C. Allow application facebook on top
- D. Allow application facebook before denying application facebook-chat

Answer: A

Explanation:

Reference: <https://live.paloaltonetworks.com/t5/Configuration-Articles/Failed-to-Block-Facebook-Chat-Consistently/ta-p/115673>

NEW QUESTION 54

A client is concerned about resource exhaustion because of denial-of-service attacks against their DNS servers. Which option will protect the individual servers?

- A. Enable packet buffer protection on the Zone Protection Profile.
- B. Apply an Anti-Spyware Profile with DNS sinkholing.
- C. Use the DNS App-ID with application-default.
- D. Apply a classified DoS Protection Profile.

Answer: A

NEW QUESTION 58

An administrator has users accessing network resources through Citrix XenApp 7.x. Which User-ID mapping solution will map multiple users who are using Citrix to connect to the network and access resources?

- A. Client Probing
- B. Terminal Services agent
- C. GlobalProtect
- D. Syslog Monitoring

Answer: B

NEW QUESTION 59

In a virtual router, which object contains all potential routes?

- A. MIB
- B. RIB
- C. SIP
- D. FIB

Answer: B

Explanation:

Reference: https://www.google.com/url?sa=t&rct=j&q=&esrc=s&source=web&cd=10&ved=0ahUKEwiOkbfYzPzXAhVnEJoKHcwVCg4QFghiMAk&url=https%3A%2F%2Flive.paloaltonetworks.com%2Ftwzvq79624%2Fattachments%2Ftwzvq79624%2Fdocumentation_tkb%2F487%2F1%2FRoute%2520Redistribution%2520and%2520Filtering%2520TechNote%2520-%2520Rev%2520B.pdf&usg=AOvVaw0H9qgaJK0oI2xjJBNo1Km

NEW QUESTION 63

Which item enables a firewall administrator to see details about traffic that is currently active through the NGFW?

- A. ACC
- B. System Logs
- C. App Scope
- D. Session Browser

Answer: D

NEW QUESTION 67

Which three options are supported in HA Lite? (Choose three.)

- A. Virtual link
- B. Active/passive deployment
- C. Synchronization of IPsec security associations
- D. Configuration synchronization
- E. Session synchronization

Answer: BCD

Explanation:

Reference: <https://www.paloaltonetworks.com/documentation/80/pan-os/web-interface-help/device/device-high-availability/ha-lite>

NEW QUESTION 68

Which tool provides an administrator the ability to see trends in traffic over periods of time, such as threats detected in the last 30 days?

- A. Session Browser
- B. Application Command Center
- C. TCP Dump
- D. Packet Capture

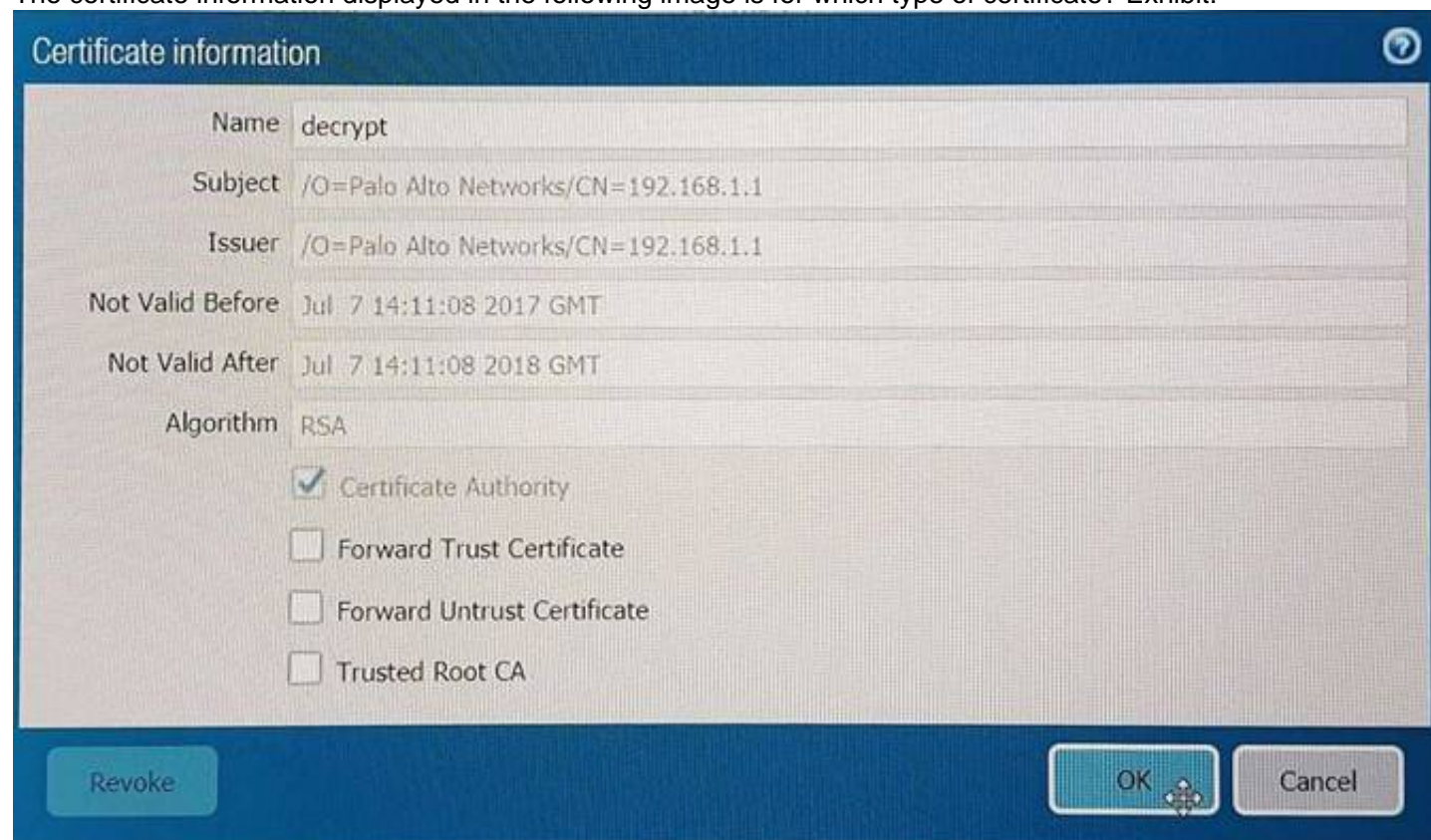
Answer: B

Explanation:

Reference: <https://live.paloaltonetworks.com/t5/Management-Articles/Tips-and-Tricks-How-to-Use-the-Application-Command-Center-ACC/ta-p/67342>

NEW QUESTION 70

The certificate information displayed in the following image is for which type of certificate? Exhibit:



- A. Forward Trust certificate
- B. Self-Signed Root CA certificate
- C. Web Server certificate
- D. Public CA signed certificate

Answer: D

NEW QUESTION 72

Which feature must you configure to prevent users from accidentally submitting their corporate

credentials to a phishing website?

- A. Mastered
- B. Not Mastered

Answer: A

Explanation:

Reference: <https://www.paloaltonetworks.com/documentation/80/pan-os/pan-os/threat-prevention/prevent-credential-phishing>

NEW QUESTION 75

How can a candidate or running configuration be copied to a host external from Panorama?

- A. Commit a running configuration.
- B. Save a configuration snapshot.
- C. Save a candidate configuration.
- D. Export a named configuration snapshot.

Answer: D

Explanation:

Reference:

https://www.paloaltonetworks.com/documentation/71/panorama/panorama_adminguide/administer-panorama/back-up-panorama-and-firewall-configurations

NEW QUESTION 77

The administrator has enabled BGP on a virtual router on the Palo Alto Networks NGFW, but new routes do not seem to be populating the virtual router. Which two options would help the administrator troubleshoot this issue? (Choose two.)

- A. View the System logs and look for the error messages about BGP.
- B. Perform a traffic pcap on the NGFW to see any BGP problems.
- C. View the Runtime Stats and look for problems with BGP configuration.
- D. View the ACC tab to isolate routing issues.

Answer: CD

NEW QUESTION 81

An administrator has enabled OSPF on a virtual router on the NGFW. OSPF is not adding new routes to the virtual router. Which two options enable the administrator to troubleshoot this issue? (Choose two.)

- A. View Runtime Stats in the virtual router.
- B. View System logs.
- C. Add a redistribution profile to forward as BGP updates.
- D. Perform a traffic pcap at the routing stage.

Answer: AB

NEW QUESTION 84

An administrator has been asked to configure a Palo Alto Networks NGFW to provide protection against external hosts attempting to exploit a flaw in an operating system on an internal system. Which Security Profile type will prevent this attack?

- A. Vulnerability Protection
- B. Anti-Spyware
- C. URL Filtering
- D. Antivirus

Answer: A

Explanation:

Reference: <https://www.paloaltonetworks.com/documentation/71/pan-os/web-interface-help/objects/objects-security-profiles-vulnerability-protection>

NEW QUESTION 89

An administrator using an enterprise PKI needs to establish a unique chain of trust to ensure mutual authentication between Panorama and the managed firewalls and Log Collectors.

How would the administrator establish the chain of trust?

- A. Use custom certificates
- B. Enable LDAP or RADIUS integration
- C. Set up multi-factor authentication
- D. Configure strong password authentication

Answer: A

Explanation:

Reference:

https://www.paloaltonetworks.com/documentation/80/panorama/panorama_adminguide/panorama-overview/plan-your-panorama-deployment

NEW QUESTION 92

A web server is hosted in the DMZ and the server is configured to listen for incoming connections on TCP port 443. A Security policies rules allowing access from the Trust zone to the DMZ zone needs to be configured to allow web-browsing access. The web server hosts its contents over HTTP(S). Traffic from Trust to DMZ is being decrypted with a Forward Proxy rule.

Which combination of service and application, and order of Security policy rules, needs to be configured to allow cleartext web- browsing traffic to this server on tcp/443.

- A. Rule #1: application: web-browsing; service: application-default; action: allow Rule #2: application: ssl; service: application-default; action: allow
- B. Rule #1: application: web-browsing; service: service-https; action: allow Rule #2: application: ssl; service: application-default; action: allow
- C. Rule # 1: application: ssl; service: application-default; action: allowRule #2: application: web-browsing; service: application-default; action: allow
- D. Rule #1: application: web-browsing; service: service-http; action: allow Rule #2: application: ssl; service: application-default; action: allow

Answer: A

NEW QUESTION 97

A global corporate office has a large-scale network with only one User-ID agent, which creates a bottleneck near the User-ID agent server. Which solution in PAN-OS® software would help in this case?

- A. application override
- B. Virtual Wire mode
- C. content inspection
- D. redistribution of user mappings

Answer: D

Explanation:

Reference: <https://www.paloaltonetworks.com/documentation/71/pan-os/pan-os/user-id/deploy-user-id-in-a-large-scale-network>

NEW QUESTION 98

An administrator has been asked to create 100 virtual firewalls in a local, on-premise lab environment (not in “the cloud”). Bootstrapping is the most expedient way to perform this task. Which option describes deployment of a bootstrap package in an on-premise virtual environment?

- A. Use config-drive on a USB stick.
- B. Use an S3 bucket with an ISO.
- C. Create and attach a virtual hard disk (VHD).
- D. Use a virtual CD-ROM with an ISO.

Answer: D

Explanation:

Reference: <https://www.paloaltonetworks.com/documentation/71/pan-os/newfeaturesguide/management-features/bootstrapping-firewalls-for-rapid-deployment.html>

NEW QUESTION 101

Which two benefits come from assigning a Decryption Profile to a Decryption policy rule with a “No Decrypt” action? (Choose two.)

- A. Block sessions with expired certificates
- B. Block sessions with client authentication
- C. Block sessions with unsupported cipher suites
- D. Block sessions with untrusted issuers
- E. Block credential phishing

Answer: ABC

Explanation:

Reference: <https://www.paloaltonetworks.com/documentation/71/pan-os/pan-os/decryption/create-a-decryption-profile>

NEW QUESTION 106

Which feature can be configured on VM-Series firewalls?

- A. aggregate interfaces
- B. machine learning
- C. multiple virtual systems
- D. GlobalProtect

Answer: D

NEW QUESTION 108

Which three user authentication services can be modified to provide the Palo Alto Networks NGFW with both usernames and role names? (Choose three.)

- A. TACACS+
- B. Kerberos
- C. PAP
- D. LDAP
- E. SAML
- F. RADIUS

Answer: ADF

NEW QUESTION 110

The firewall determines if a packet is the first packet of a new session or if a packet is part of an existing session using which kind of match?

- A. 5-tuple matchSource IP Address, Destination IP Address, Source Port, Destination Port, Protocol
- B. 7-tuple matchSource IP Address, Destination IP Address, Source Port, Destination Port ,Source User, URL Category and Source Security Zone.
- C. 6-tuple matchSource IP Address, Destination IP Address, Source Port, Destination Port, Protocol and Source Security Zone
- D. 9-tuple matchSource IP Address, Destination IP Address, Source Port, Destination Port, Source User, Source Security Zone, Destination Security Zone, Application and URL Category

Answer: A

NEW QUESTION 112

Which log file can be used to identify SSL decryption failures?

- A. Configuration
- B. Threats
- C. ACC
- D. Traffic

Answer: C

NEW QUESTION 116

An administrator needs to upgrade an NGFW to the most current version of PAN-OS® software. The following is occurring:

- Firewall has Internet connectivity through e1/1.
- Default security rules and security rules allowing all SSL and web-browsing traffic to and from any zone.
- Service route is configured, sourcing update traffic from e1/1.
- A communication error appears in the System logs when updates are performed.
- Download does not complete.

What must be configured to enable the firewall to download the current version of PAN-OS software?

- A. DNS settings for the firewall to use for resolution
- B. scheduler for timed downloads of PAN-OS software
- C. static route pointing application PaloAlto-updates to the update servers
- D. Security policy rule allowing PaloAlto-updates as the application

Answer: D

NEW QUESTION 121

Which three firewall states are valid? (Choose three)

- A. Suspended
- B. Passive
- C. Active
- D. Pending E.Functional

Answer: ABC

NEW QUESTION 123

An administrator has configured a QoS policy rule and a QoS profile that limits the maximum allowable bandwidth for the YouTube application. However , YouTube is consuming more than the maximum bandwidth allotment configured.

Which configuration step needs to be configured to enable QoS?

- A. Enable QoS Data Filtering Profile
- B. Enable QoS monitor
- C. Enable Qos interface
- D. Enable Qos in the interface Management Profile.

Answer: C

NEW QUESTION 127

When configuring the firewall for packet capture, what are the valid stage types?

- A. Receive, management , transmit , and drop
- B. Receive , firewall, send , and non-syn
- C. Receive management , transmit, and non-syn
- D. Receive , firewall, transmit, and drop

Answer: D

NEW QUESTION 132

Which User-ID method maps IP address to usernames for users connecting through a web proxy that has already authenticated the user?

- A. Client Probing

- B. Port mapping
- C. Server monitoring
- D. Syslog listening

Answer: D

NEW QUESTION 137

An administrator just submitted a newly found piece of spyware for WildFire analysis. The spyware passively monitors behavior without the user's knowledge. What is the expected verdict from WildFire?

- A. Gray ware
- B. Malware
- C. Spyware
- D. Phishing

Answer: A

NEW QUESTION 138

Which option enables a Palo Alto Networks NGFW administrator to schedule Application and Threat updates while applying only new content-IDs to traffic?

- A. Select download-and-install.
- B. Select download-and-install, with "Disable new apps in content update" selected.
- C. Select download-only.
- D. Select disable application updates and select "Install only Threat updates"

Answer: C

NEW QUESTION 141

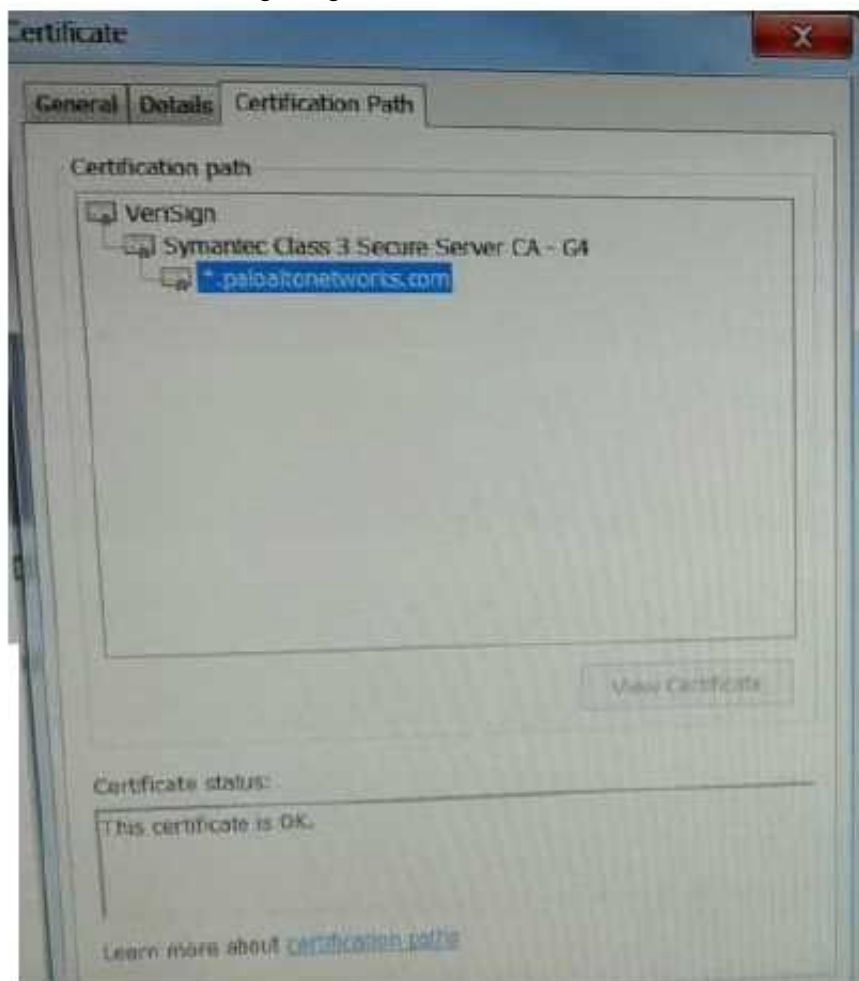
Which two settings can be configured only locally on the firewall and not pushed from a Panorama template or template stack? (Choose two)

- A. HA1 IP Address
- B. Network Interface Type
- C. Master Key
- D. Zone Protection Profile

Answer: AB

NEW QUESTION 146

Based on the following image,



what is the correct path of root, intermediate, and end-user certificate?

- A. Palo Alto Networks > Symantec > VeriSign
- B. Symantec > VeriSign > Palo Alto Networks
- C. VeriSign > Palo Alto Networks > Symantec
- D. VeriSign > Symantec > Palo Alto Networks

Answer: D

NEW QUESTION 149

A host attached to Ethernet 1/4 cannot ping the default gateway. The widget on the dashboard shows Ethernet 1/1 and Ethernet 1/4 to be green. The IP address of Ethernet 1/1 is 192.168.1.7 and the IP address of Ethernet 1/4 is 10.1.1.7. The default gateway is attached to Ethernet 1/1. A default route is properly configured. What can be the cause of this problem?

- A. No Zone has been configured on Ethernet 1/4.
- B. Interface Ethernet 1/1 is in Virtual Wire Mode.
- C. DNS has not been properly configured on the firewall.
- D. DNS has not been properly configured on the host.

Answer: A

NEW QUESTION 151

A logging infrastructure may need to handle more than 10,000 logs per second. Which two options support a dedicated log collector function? (Choose two)

- A. Panorama virtual appliance on ESX(i) only
- B. M-500
- C. M-100 with Panorama installed
- D. M-100

Answer: BC

Explanation:

([httpHYPERLINK "https://live.paloaltonetworks.com/t5/Management-Articles/Panorama-Sizing-and-Design-Guide/ta-p/72181"s://live.paloaltonetworks.com/t5/Management-Articles/Panorama-Sizing- and-Design-Guide/ta-p/72181](https://live.paloaltonetworks.com/t5/Management-Articles/Panorama-Sizing-and-Design-Guide/ta-p/72181))

NEW QUESTION 156

A network engineer has revived a report of problems reaching 98.139.183.24 through vr1 on the firewall. The routing table on this firewall is extensive and complex.

Which CLI command will help identify the issue?

- A. test routing fib virtual-router vr1
- B. show routing route type static destination 98.139.183.24
- C. test routing fib-lookup ip 98.139.183.24 virtual-router vr1
- D. show routing interface

Answer: C

NEW QUESTION 158

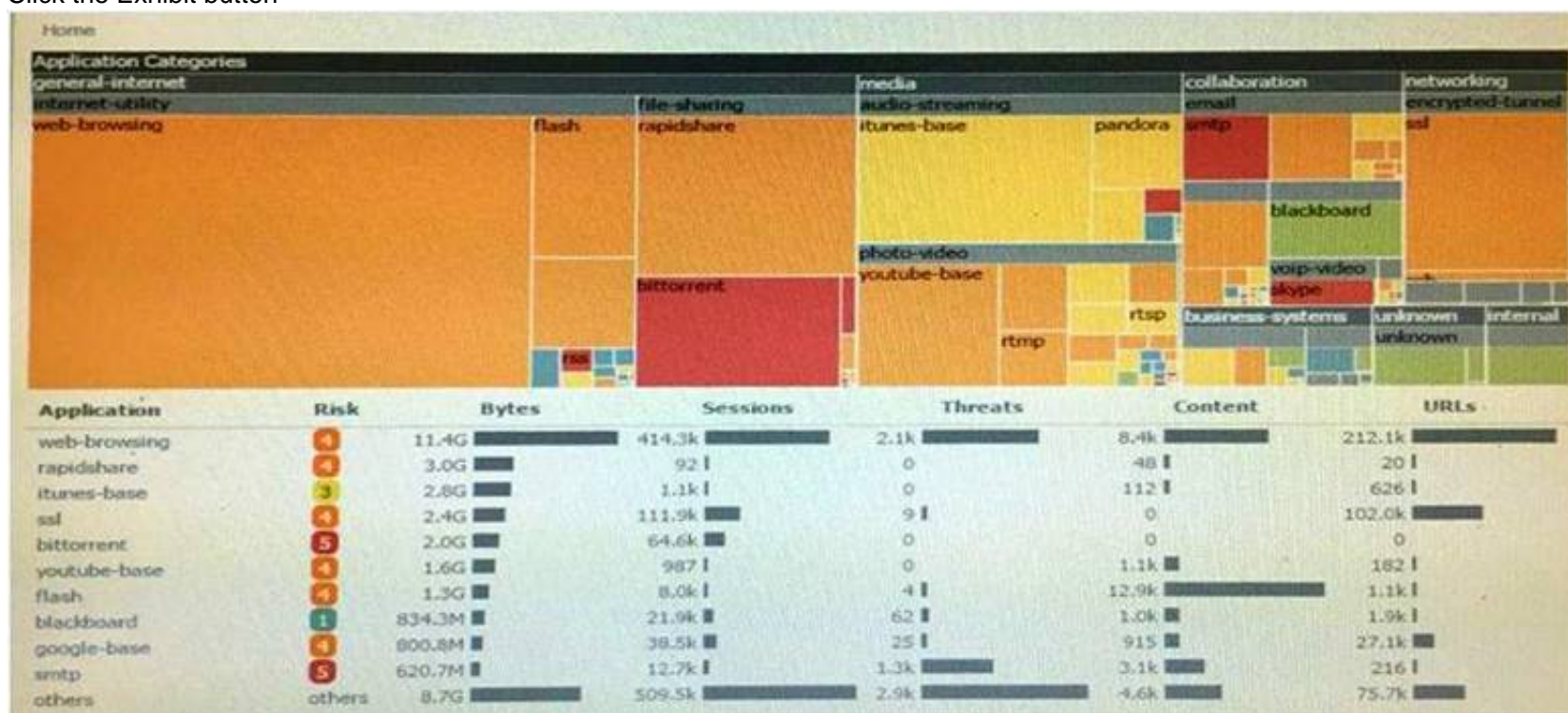
Which two statements are correct for the out-of-box configuration for Palo Alto Networks NGFWs? (Choose two)

- A. The devices are pre-configured with a virtual wire pair out the first two interfaces.
- B. The devices are licensed and ready for deployment.
- C. The management interface has an IP address of 192.168.1.1 and allows SSH and HTTPS connections.
- D. A default bidirectional rule is configured that allows Untrust zone traffic to go to the Trust zone.
- E. The interface are pingable.

Answer: BC

NEW QUESTION 162

Click the Exhibit button



An administrator has noticed a large increase in bittorrent activity. The administrator wants to determine where the traffic is going on the company. What would be the administrator's next step?

- A. Right-Click on the bittorrent link and select Value from the context menu
- B. Create a global filter for bittorrent traffic and then view Traffic logs.
- C. Create local filter for bittorrent traffic and then view Traffic logs.
- D. Click on the bittorrent application link to view network activity

Answer: D

NEW QUESTION 165

Which command can be used to validate a Captive Portal policy?

- A. eval captive-portal policy <criteria>
- B. request cp-policy-eval <criteria>
- C. test cp-policy-match <criteria>
- D. debug cp-policy <criteria>

Answer: C

NEW QUESTION 168

The company's Panorama server (IP 10.10.10.5) is not able to manage a firewall that was recently deployed. The firewall's dedicated management port is being used to connect to the management network.

Which two commands may be used to troubleshoot this issue from the CLI of the new firewall? (Choose two)

- A. test panoramas-connect 10.10.10.5
- B. show panoramas-status
- C. show arp all | match 10.10.10.5
- D. topdump filter "host 10.10.10.5"
- E. debug dataplane packet-diag set capture on

Answer: BD

NEW QUESTION 173

Which three log-forwarding destinations require a server profile to be configured? (Choose three)

- A. SNMP Trap
- B. Email
- C. RADIUS
- D. Kerberos
- E. Panorama
- F. Syslog

Answer: ABF

NEW QUESTION 174

Which two methods can be used to mitigate resource exhaustion of an application server? (Choose two)

- A. Vulnerability Object
- B. DoS Protection Profile
- C. Data Filtering Profile
- D. Zone Protection Profile

Answer: BD

NEW QUESTION 178

The IT department has received complaints about VoIP call jitter when the sales staff is making or receiving calls. QoS is enabled on all firewall interfaces, but there is no QoS policy written in the rulebase. The IT manager wants to find out what traffic is causing the jitter in real time when a user reports the jitter.

Which feature can be used to identify, in real time, the applications taking up the most bandwidth?

- A. QoS Statistics
- B. Applications Report
- C. Application Command Center (ACC)
- D. QoS Log

Answer: A

NEW QUESTION 180

A firewall administrator has completed most of the steps required to provision a standalone Palo Alto Networks Next-Generation Firewall. As a final step, the administrator wants to test one of the security policies.

Which CLI command syntax will display the rule that matches the test?

- A. test security -policy- match source <ip_address> destination <IP_address> destination port <port number> protocol <protocol number>
- B. show security rule source <ip_address> destination <IP_address> destination port <port number> protocol <protocol number>
- C. test security rule source <ip_address> destination <IP_address> destination port <port number> protocol <protocol number>
- D. show security-policy-match source <ip_address> destination <IP_address> destination port <port number> protocol <protocol number> test security-policy-match source

Answer: A

Explanation:

test security-policy-match source <source IP> destination <destination IP> protocol <protocol number>

<https://live.paloaltonetworks.com/t5/Management-Articles/How-to-Test-Which-Security-Policy-Applies-to-a-Traffic-Flow/ta-p/53693>

NEW QUESTION 184

A company has a web server behind a Palo Alto Networks next-generation firewall that it wants to make accessible to the public at 1.1.1.1. The company has decided to configure a destination NAT Policy rule.

Given the following zone information:

- DMZ zone: DMZ-L3
- Public zone: Untrust-L3
- Guest zone: Guest-L3
- Web server zone: Trust-L3
- Public IP address (Untrust-L3): 1.1.1.1
- Private IP address (Trust-L3): 192.168.1.50

What should be configured as the destination zone on the Original Packet tab of NAT Policy rule?

- A. Untrust-L3
- B. DMZ-L3
- C. Guest-L3
- D. Trust-L3

Answer: A

NEW QUESTION 186

Company.com has an in-house application that the Palo Alto Networks device doesn't identify correctly. A Threat Management Team member has mentioned that this in-house application is very sensitive and all traffic being identified needs to be inspected by the Content-ID engine.

Which method should company.com use to immediately address this traffic on a Palo Alto Networks device?

- A. Create a custom Application without signatures, then create an Application Override policy that includes the source, Destination, Destination Port/Protocol and Custom Application of the traffic.
- B. Wait until an official Application signature is provided from Palo Alto Networks.
- C. Modify the session timer settings on the closest referenced application to meet the needs of the in-house application
- D. Create a Custom Application with signatures matching unique identifiers of the in-house application traffic

Answer: D

NEW QUESTION 189

A network security engineer is asked to provide a report on bandwidth usage. Which tab in the ACC provides the information needed to create the report?

- A. Blocked Activity
- B. Bandwidth Activity
- C. Threat Activity
- D. Network Activity

Answer: D

NEW QUESTION 192

A network administrator uses Panorama to push security policies to managed firewalls at branch offices. Which policy type should be configured on Panorama if the administrators at the branch office sites to override these products?

- A. Pre Rules
- B. Post Rules
- C. Explicit Rules
- D. Implicit Rules

Answer: A

NEW QUESTION 195

Click the Exhibit button below,

Exhibit Window							
			Source			Destination	
	Name	Tags	Zone/Interface	Address	User	Address	Application
1	PBF1	none	Trust-L3	192.168.10.0/24	any	172.16.10.0/24	any
2	PBF2	none	Trust-L3	192.168.10.0/24	any	172.16.10.0/24	any
3	PBF3	none	Trust-L3	192.168.10.0/24	Will	172.16.10.0/24	any

Forwarding				
Service	Action	Egress I/F	Next Hop	Enforce Symmetric Return
any	forward	ethernet1/2.2	172.20.20.1	false
service-http	forward	ethernet1/3.2	172.20.30.1	false
service-https	forward	ethernet1/3.3	172.20.40.1	false

A firewall has three PBF rules and a default route with a next hop of 172.20.10.1 that is configured in the default VR. A user named Will has a PC with a 192.168.10.10 IP address. He makes an HTTPS connection to 172.16.10.20. Which is the next hop IP address for the HTTPS traffic from Will's PC?

- A. 172.20.30.1
- B. 172.20.40.1
- C. 172.20.20.1
- D. 172.20.10.1

Answer: C

NEW QUESTION 197

Which three function are found on the dataplane of a PA-5050? (Choose three)

- A. Protocol Decoder
- B. Dynamic routing
- C. Management
- D. Network Processing
- E. Signature Match

Answer: BDE

NEW QUESTION 199

What are three possible verdicts that WildFire can provide for an analyzed sample? (Choose three)

- A. Clean
- B. Benign
- C. Adware
- D. Suspicious
- E. Grayware
- F. Malware

Answer: BEF

Explanation:

[https://www.paloaltonetworks.com/documentation/70/pan-HYPERLINK "https://www.paloaltonetworks.com/documentation/70/pan-os/newfeaturesguide/wildfire-features/wildfire-grayware-verdict" os/newfeaturesguide/wildfire-features/wildfire-grayware-verdict](https://www.paloaltonetworks.com/documentation/70/pan-HYPERLINK \)

NEW QUESTION 203

Which Security Policy Rule configuration option disables antivirus and anti-spyware scanning of server-to-client flows only?

- A. Disable Server Response Inspection
- B. Apply an Application Override
- C. Disable HIP Profile
- D. Add server IP Security Policy exception

Answer: A

NEW QUESTION 205

A company.com wants to enable Application Override. Given the following screenshot:



Which two statements are true if Source and Destination traffic match the Application Override policy? (Choose two)

- A. Traffic that matches "rtp-base" will bypass the App-ID and Content-ID engines.
- B. Traffic will be forced to operate over UDP Port 16384.
- C. Traffic utilizing UDP Port 16384 will now be identified as "rtp-base".
- D. Traffic utilizing UDP Port 16384 will bypass the App-ID and Content-ID engines.

Answer: AC

NEW QUESTION 209

When is it necessary to activate a license when provisioning a new Palo Alto Networks firewall?

- A. When configuring Certificate Profiles
- B. When configuring GlobalProtect portal
- C. When configuring User Activity Reports
- D. When configuring Antivirus Dynamic Updates

Answer: D

NEW QUESTION 210

What are two prerequisites for configuring a pair of Palo Alto Networks firewalls in an active/passive High Availability (HA) pair? (Choose two.)

- A. The firewalls must have the same set of licenses.
- B. The management interfaces must be on the same network.
- C. The peer HA1 IP address must be the same on both firewalls.
- D. HA1 should be connected to HA1. Either directly or with an intermediate Layer 2 device.

Answer: AD

NEW QUESTION 213

People are having intermittent quality issues during a live meeting via web application.

- A. Use QoS profile to define QoS Classes
- B. Use QoS Classes to define QoS Profile
- C. Use QoS Profile to define QoS Classes and a QoS Policy
- D. Use QoS Classes to define QoS Profile and a QoS Policy

Answer: C

NEW QUESTION 217

Which URL Filtering Security Profile action logs the URL Filtering category to the URL Filtering log?

- A. Log
- B. Alert
- C. Allow
- D. Default

Answer: B

Explanation:

<https://www.paloaltonetworks.com/documentation/70/pan-os/pan-os/url-filtering/url-filtering-profile-actions>

NEW QUESTION 219

Which Panorama feature allows for logs generated by Panorama to be forwarded to an external Security Information and Event Management(SIEM) system?

- A. Panorama Log Settings
- B. Panorama Log Templates
- C. Panorama Device Group Log Forwarding
- D. Collector Log Forwarding for Collector Groups

Answer: A

Explanation:

https://www.paloaltonetworks.com/documentation/61/panorama/panorama_admin[HYPERLINK](#)

"https://www.paloaltonetworks.com/documentation/61/panorama/panorama_adminguide/managing-log-collection/enable-log-forwarding-from-panorama-to-external-destinations"[nguidHYPERLINK](#) "https://www.paloaltonetworks.com/documentation/61/panorama/panorama_adminguide/managing-log-collection/enable-log-forwarding-from-panorama-to-external-destinations"[e/manage-log- collection/enable-log-forwarding-from-panorama-to-external-destinaHYPERLINK](#)

"https://www.paloaltonetworks.com/documentation/61/panorama/panorama_adminguide/managing-log-collection/enable-log-forwarding-from-panorama-to-external-destinations"[tions](#)

NEW QUESTION 220

Which three rule types are available when defining policies in Panorama? (Choose three.)

- A. Pre Rules
- B. Post Rules
- C. Default Rules
- D. Stealth Rules
- E. Clean Up Rules

Answer: ABC

Explanation:

<https://www.paloaltonetworks.com/documentation/71/pan-os/web-interface-help/panorama-web-interface/defining-policies-on-panorama>[rks.com/documentation/71/pan-os/web-](#)

<https://www.paloaltonetworks.com/documentation/71/pan-os/web-interface-help/panorama-web-interface/defining-policies-on-panorama>[face-](#)
<https://www.paloaltonetworks.com/documentation/71/pan-os/web-interface-help/panorama-web-interface/defining-policies-on-panorama>

NEW QUESTION 224

A network security engineer needs to configure a virtual router using IPv6 addresses. Which two routing options support these addresses? (Choose two)

- A. BGP not sure
- B. OSPFv3
- C. RIP
- D. Static Route

Answer: BD

Explanation:

<https://live.paloaltonetworks.com/t5/Management-Articles/Does-PAN-OS-Support-Dynamic-Routing-Protocols-OSPF-or-BGP-with/ta-p/62773>

NEW QUESTION 229

Which CLI command displays the current management plane memory utilization?

- A. > debug management-server show
- B. > show running resource-monitor
- C. > show system info
- D. > show system resources

Answer: D

Explanation:

<https://live.paloaltonetworks.com/t5/Learning-Articles/How-to-Interpret-show-system-resources/ta-p/59364>[HYPERLINK](#) "<https://live.paloaltonetworks.com/t5/Learning-Articles/How-to-Interpret-show-system-resources/ta-p/59364>"[live.paloaltonetworks.com/t5/Learning-Articles/How-to-Interpret-show-system-resources/ta-p/59364](#)

"The command show system resources gives a snapshot of Management Plane (MP) resource utilization including memory and CPU. This is similar to the 'top' command in Linux." <https://live.paloaltonetworks.com/t5/Learning-Articles/How-to-Interpret-show-system-resources/ta-p/59364>[HYPERLINK](#) "<https://live.paloaltonetworks.com/t5/Learning-Articles/How-to-Interpret-show-system-resources/ta-p/59364>"[paloHYPERLINK](#)

"<https://live.paloaltonetworks.com/t5/Learning-Articles/How-to-Interpret-show-system-resources/ta-p/59364>"[altonetworHYPERLINK](#)

"<https://live.paloaltonetworks.com/t5/Learning-Articles/How-to-Interpret-show-system-resources/ta-p/59364>"[ks.com/t5/Learning-Articles/How-to-Interpret-show-system-resources/ta-p/59364](#)

NEW QUESTION 233

Which two logs on the firewall will contain authentication-related information useful for troubleshooting purpose (Choose two)

- A. ms.log
- B. traffic.log
- C. system.log
- D. dp-monitor.log
- E. authd.log

Answer: CE

NEW QUESTION 237

How can a Palo Alto Networks firewall be configured to send syslog messages in a format compatible with non-standard syslog servers?

- A. Enable support for non-standard syslog messages under device management
- B. Check the custom-format check box in the syslog server profile
- C. Select a non-standard syslog server profile
- D. Create a custom log format under the syslog server profile

Answer:

D

NEW QUESTION 241

Which Device Group option is assigned by default in Panorama whenever a new device group is created to manage a Firewall?

- A. Master
- B. Universal
- C. Shared
- D. Global

Answer: C

NEW QUESTION 245

.....

Relate Links

100% Pass Your PCNSE Exam with ExamBible Prep Materials

<https://www.exambible.com/PCNSE-exam/>

Contact us

We are proud of our high-quality customer service, which serves you around the clock 24/7.

Viste - <https://www.exambible.com/>