

## Exam Questions az-500

Microsoft Azure Security Technologies

<https://www.2passeasy.com/dumps/az-500/>



## NEW QUESTION 1

You need to meet the identity and access requirements for Group1.  
 What should you do?

- A. Add a membership rule to Group1.
- B. Delete Group1. Create a new group named Group1 that has a membership type of Office 365. Add users and devices to the group.
- C. Modify the membership rule of Group1.
- D. Change the membership type of Group1 to Assign
- E. Create two groups that have dynamic membership
- F. Add the new groups to Group1.

**Answer: B**

### Explanation:

Incorrect Answers:

A, C: You can create a dynamic group for devices or for users, but you can't create a rule that contains both users and devices.

D: For assigned group you can only add individual members. Scenario:

Litware identifies the following identity and access requirements: All San Francisco users and their devices must be members of Group1. The tenant currently contain this group:

Name	Type	Description
Group1	Security group	A group that has the Dynamic User membership type, contains all the San Francisco users, and provides access to many Azure AD applications and Azure resources.

References:

<https://docs.microsoft.com/en-us/azure/active-directory/users-groups-roles/groups-dynamic-membership>

<https://docs.microsoft.com/en-us/azure/active-directory/fundamentals/active-directory-groups-create-azure-portal>

Testlet 2

This is a case study. Case studies are not timed separately. You can use as much exam time as you would like to complete each case. However, there may be additional case studies and sections on this exam. You must manage your time to ensure that you are able to complete all questions included on this exam in the time provided.

To answer the questions included in a case study, you will need to reference information that is provided in the case study. Case studies might contain exhibits and other resources that provide more information about the scenario that is described in the case study. Each question is independent of the other question on this case study.

At the end of this case study, a review screen will appear. This screen allows you to review your answers and to make changes before you move to the next sections of the exam. After you begin a new section, you cannot return to this section.

To start the case study

To display the first question on this case study, click the Next button. Use the buttons in the left pane to explore the content of the case study before you answer the questions. Clicking these buttons displays information such as business requirements, existing environment, and problem statements. If the case study has an All Information tab, note that the information displayed is identical to the information displayed on the subsequent tabs. When you are ready to answer a question, click the Question button to return to the question.

Overview

Contoso, Ltd. is a consulting company that has a main office in Montreal and two branch offices in Seattle and New York. The company hosts its entire server infrastructure in Azure.

Contoso has two Azure subscriptions named Sub1 and Sub2. Both subscriptions are associated to an Azure Active Directory (Azure AD) tenant named contoso.com.

Technical requirements

Contoso identifies the following technical requirements:

Deploy Azure Firewall to VNetWork1 in Sub2.

Register an application named App2 in contoso.com.

Whenever possible, use the principle of least privilege.

Enable Azure AD Privileged Identity Management (PIM) for contoso.com

Contoso.com contains the users shown in the following table.

Name	City	Role
User1	Montreal	Global administrator
User2	MONTREAL	Security administrator
User3	London	Privileged role administrator
User4	Ontario	Application administrator
User5	Seattle	Cloud application administrator
User6	Seattle	User administrator
User7	Sydney	Reports reader
User8	Sydney	None

Contoso.com contains the security groups shown in the following table.

Name	Membership type	Dynamic membership rule
Group1	Dynamic user	<code>user.city -contains "ON"</code>
Group2	Dynamic user	<code>user.city -match "*on"</code>

Sub1

Sub1 contains six resource groups named RG1, RG2, RG3, RG4, RG5, and RG6.

User2 creates the virtual networks shown in the following table.



Name	Resource group
VNET1	RG1
VNET2	RG2
VNET3	RG3
VNET4	RG4

Sub1 contains the locks shown in the following table.

Name	Set on	Lock type
Lock1	RG1	Delete
Lock2	RG2	Read-only
Lock3	RG3	Delete
Lock4	RG3	Read-only

Sub1 contains the Azure policies shown in the following table.

Policy definition	Resource type	Scope
Allowed resource types	networkSecurityGroups	RG4
Not allowed resource types	virtualNetworks/subnets	RG5
Not allowed resource types	networksSecurityGroups	RG5
Not allowed resource types	virtualNetworks/virtualNetworkPeerings	RG6

Sub2

Name	Subnet
VNetwork1	Subnet1.1, Subnet1.2 and Subnet1.3
VNetwork2	Subnet2.1

Sub2 contains the virtual machines shown in the following table.

Name	Network interface	Application security group	Connected to
VM1	NIC1	ASG1	Subnet1.1
VM2	NIC2	ASG2	Subnet1.1
VM3	NIC3	None	Subnet1.2
VM4	NIC4	ASG1	Subnet1.3
VM5	NIC5	None	Subnet2.1

All virtual machines have the public IP addresses and the Web Server (IIS) role installed. The firewalls for each virtual machine allow ping requests and web requests.

Sub2 contains the network security groups (NSGs) shown in the following table.

Name	Associated to
NSG1	NIC2
NSG2	Subnet1.1
NSG3	Subnet1.3
NSG4	Subnet2.1

NSG1 has the inbound security rules shown in the following table.

Priority	Port	Protocol	Source	Destination	Action
65000	Any	Any	VirtualNetwork	VirtualNetwork	Allow
65001	Any	Any	AzureLoadBalancer	Any	Allow
65500	Any	Any	Any	Any	Deny

NSG2 has the inbound security rules shown in the following table.

Priority	Port	Protocol	Source	Destination	Action
100	80	TCP	Internet	VirtualNetwork	Allow
65000	Any	Any	VirtualNetwork	VirtualNetwork	Allow
65001	Any	Any	AzureLoadBalancer	Any	Allow
65500	Any	Any	Any	Any	Deny

NSG3 has the inbound security rules shown in the following table.

Priority	Port	Protocol	Source	Destination	Action
100	Any	TCP	ASG1	ASG1	Allow
150	Any	Any	ASG2	VirtualNetwork	Allow
200	Any	Any	Any	Any	Deny
65000	Any	Any	VirtualNetwork	VirtualNetwork	Allow
65001	Any	Any	AzureLoadBalancer	Any	Allow
65500	Any	Any	Any	Any	Deny

NSG4 has the inbound security rules shown in the following table.

Priority	Port	Protocol	Source	Destination	Action
100	Any	Any	Any	Any	Allow
65000	Any	Any	VirtualNetwork	VirtualNetwork	Allow
65001	Any	Any	AzureLoadBalancer	Any	Allow
65500	Any	Any	Any	Any	Deny

NSG1, NSG2, NSG3, and NSG4 have the outbound security rules shown in the following table.

Priority	Port	Protocol	Source	Destination	Action
65000	Any	Any	VirtualNetwork	VirtualNetwork	Allow
65001	Any	Any	Any	Internet	Allow
65500	Any	Any	Any	Any	Deny

Contoso identifies the following technical requirements:

- \* Deploy Azure Firewall to VNetwork1 in Sub2.
- \* Register an application named App2 in contoso.com.
- \* Whenever possible, use the principle of least privilege.
- \* Enable Azure AD Privileged Identity Management (PIM) for contoso.com.m.

## NEW QUESTION 2

Note: This question is part of a series of questions that present the same scenario. Each question in the series contains a unique solution that might meet the stated goals. Some question sets might have more than one correct solution, while others might not have a correct solution.

After you answer a question in this section, you will NOT be able to return to it. As a result, these questions will not appear in the review screen.

You have an Azure Subscription named Sub1.

You have an Azure Storage account named Sa1 in a resource group named RG1.

Users and applications access the blob service and the file service in Sa1 by using several shared access signatures (SASs) and stored access policies. You discover that unauthorized users accessed both the file service and the blob service.

You need to revoke all access to Sa1.

Solution: You create a new stored access policy. Does this meet the goal?

- A. Yes
- B. No

**Answer:** A

### Explanation:

To revoke a stored access policy, you can either delete it, or rename it by changing the signed identifier. Changing the signed identifier breaks the associations between any existing signatures and the stored access policy. Deleting or renaming the stored access policy immediately effects all of the shared access signatures associated with it.

References:

<https://docs.microsoft.com/en-us/rest/api/storageservices/Establishing-a-Stored-Access-Policy>

## NEW QUESTION 3

Note: This question is part of a series of questions that present the same scenario. Each question in the series contains a unique solution that might meet the stated goals. Some question sets might have more than one correct solution, while others might not have a correct solution.

After you answer a question in this section, you will NOT be able to return to it. As a result, these questions will not appear in the review screen.

You have a hybrid configuration of Azure Active Directory (AzureAD). You have an Azure HDInsight cluster on a virtual network.

You plan to allow users to authenticate to the cluster by using their on-premises Active Directory credentials. You need to configure the environment to support the planned authentication.

Solution: You create a site-to-site VPN between the virtual network and the on-premises network. Does this meet the goal?

- A. Yes
- B. No

**Answer:** A

### Explanation:

You can connect HDInsight to your on-premises network by using Azure Virtual Networks and a VPN gateway.

- Note: To allow HDInsight and resources in the joined network to communicate by name, you must perform the following actions: Create Azure Virtual Network.
- Create a custom DNS server in the Azure Virtual Network.
- Configure the virtual network to use the custom DNS server instead of the default Azure Recursive Resolver. Configure forwarding between the custom DNS server and your on-premises DNS server.

References:

<https://docs.microsoft.com/en-us/azure/hdinsight/connect-on-premises-network>

## NEW QUESTION 4

You have an Azure subscription named Sub1. Sub1 contains a virtual network named VNet1 that contains one subnet named Subnet1.

You create a service endpoint for Subnet1.

Subnet1 contains an Azure virtual machine named VM1 that runs Ubuntu Server 18.04.

You need to deploy Docker containers to VM1. The containers must be able to access Azure Storage resources and Azure SQL databases by using the service endpoint.

- A. Create an application security group and a network security group (NSG).
- B. Edit the docker-compose.yml file.
- C. Install the container network interface (CNI) plug-in.

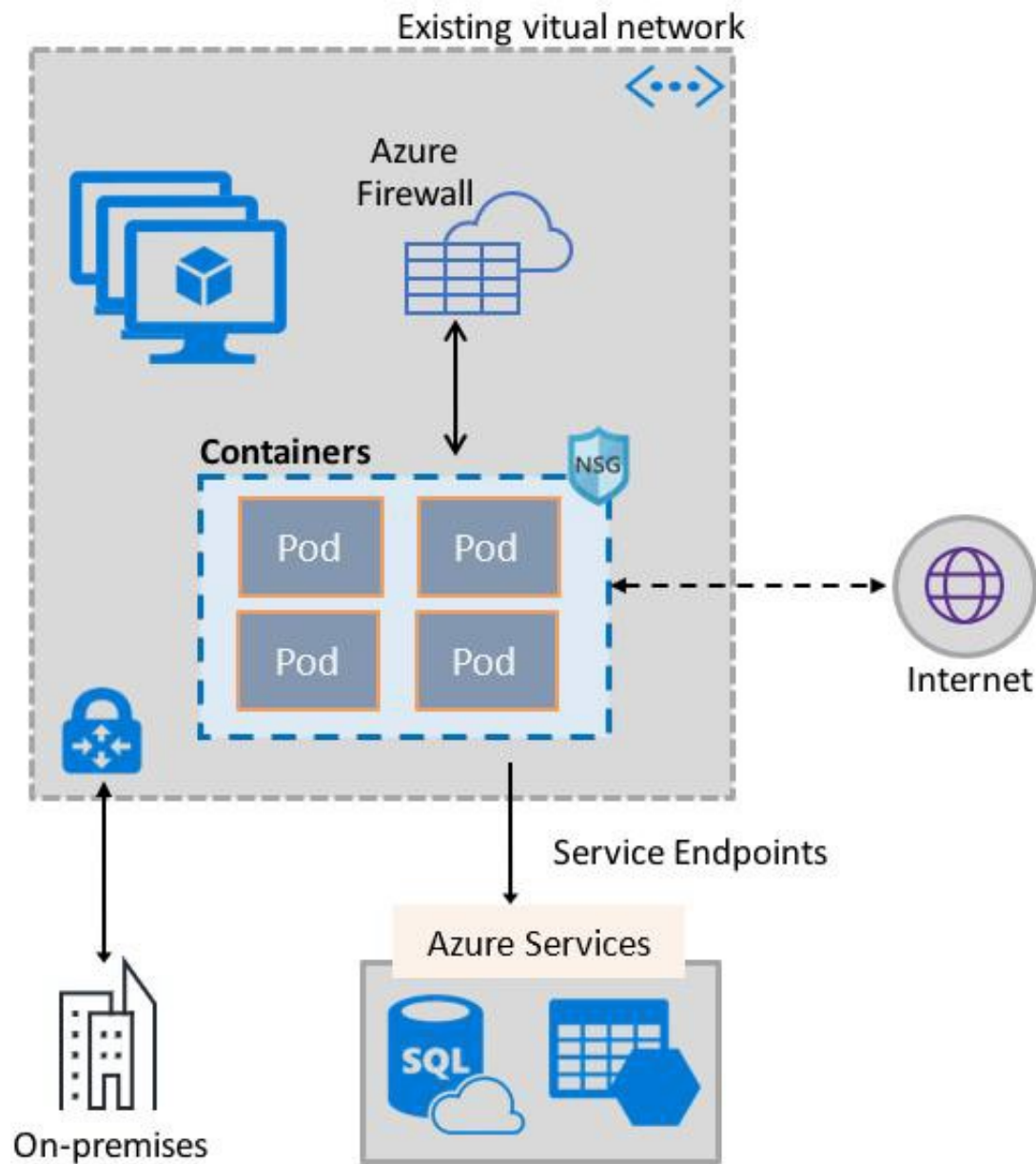


Answer: C

**Explanation:**

The Azure Virtual Network container network interface (CNI) plug-in installs in an Azure Virtual Machine. The plug-in supports both Linux and Windows platform. The plug-in assigns IP addresses from a virtual network to containers brought up in the virtual machine, attaching them to the virtual network, and connecting them directly to other containers and virtual network resources. The plug-in doesn't rely on overlay networks, or routes, for connectivity, and provides the same performance as virtual machines.

The following picture shows how the plug-in provides Azure Network capabilities to Pods:



**References:**

<https://docs.microsoft.com/en-us/azure/virtual-network/container-networking-overview>

**NEW QUESTION 5**

You have Azure Resource Manager templates that you use to deploy Azure virtual machines.

You need to disable unused Windows features automatically as instances of the virtual machines are provisioned. What should you use?

- A. device compliance policies in Microsoft Intune
- B. Azure Automation State Configuration
- C. application security groups
- D. Azure Advisor

Answer: B

**Explanation:**

You can use Azure Automation State Configuration to manage Azure VMs (both Classic and Resource Manager), on-premises VMs, Linux machines, AWS VMs, and on-premises physical machines.

Note: Azure Automation State Configuration provides a DSC pull server similar to the Windows Feature DSC-Service so that target nodes automatically receive configurations, conform to the desired state, and report back on their compliance. The built-in pull server in Azure Automation eliminates the need to set up and maintain your own pull server. Azure Automation can target virtual or physical Windows or Linux machines, in the cloud or on-premises.

**References:**

<https://docs.microsoft.com/en-us/azure/automation/automation-dsc-getting-started>

**NEW QUESTION 6**

DRAG DROP

You have an Azure subscription that contains the virtual networks shown in the following table.

Name	Region	Description
HubVNet	East US	HubVNet is a virtual network connected to the on-premises network by using a site-to-site VPN that has BGP route propagation enabled. HubVNet contains a subnet named HubVNetSubnet0.
SpokeVNet	East US	SpokeVNet is a virtual network connected to HubVNet by using VNet peering. SpokeVNet contains a subnet named SpokeVNetSubnet0.

The Azure virtual machines on SpokeVNetSubnet0 can communicate with the computers on the on-premises network. You plan to deploy an Azure firewall to HubVNet.

You create the following two routing tables:

\_ RT1: Includes a user-defined route that points to the private IP address of the Azure firewall as a next hop address RT2: Disables BGP route propagation and defines the private IP address of the Azure firewall as the default gateway

You need to ensure that traffic between SpokeVNetSubnet0 and the on-premises network flows through the Azure firewall.

To which subnet should you associate each route table? To answer, drag the appropriate subnets to the correct route tables. Each subnet may be used once, more than once, or not at all. You may need to drag the split bar between panes or scroll to view content.

NOTE: Each correct selection is worth one point.

Select and Place:

## Subnets

Azure FirewallSubnet

GatewaySubnet

HubVNetSubnet0

## Answer Area

RT1:

RT2:

- A. Mastered  
B. Not Mastered

Answer: A

Explanation:

## Subnets

Azure FirewallSubnet

GatewaySubnet

HubVNetSubnet0

## Answer Area

RT1:

GatewaySubnet

RT2:

HubVNetSubnet0

### NEW QUESTION 7

#### HOTSPOT

You have Azure virtual machines that have Update Management enabled. The virtual machines are configured as shown in the following table.

Name	Operating system	Region	Resource group
VM1	Windows Server 2012	East US	RG1
VM2	Windows Server 2012 R2	West US	RG1
VM3	Windows Server 2016	West US	RG2
VM4	Ubuntu Server 18.04 LTS	West US	RG2
VM5	Red Hat Enterprise Linux 7.4	East US	RG1
VM6	CentOS 7.5	East US	RG1

You schedule two update deployments named Update1 and Update2. Update1 updates VM3. Update2 updates VM6.

Which additional virtual machines can be updated by using Update1 and Update2? To answer, select the appropriate options in the answer area.

NOTE: Each correct selection is worth one point.

Hot Area:



## Answer Area

Update1: 

	▼
VM2 only	
VM4 only	
VM1 and VM2 only	
VM1, VM2, VM4, VM5, and VM6	

Update2: 

	▼
VM5 only	
VM1 and VM5 only	
VM4 and VM5 only	
VM1, VM2, and VM5 only	
VM1, VM2, VM3, VM4, and VM5	

- A. Mastered  
 B. Not Mastered

**Answer:** A

### Explanation:

Update1: VM1 and VM2 only

VM3: Windows Server 2016 West US RG2

Update2: VM4 and VM5 only VM6: CentOS 7.5 East US RG1

For Linux, the machine must have access to an update repository. The update repository can be private or public. References:

<https://docs.microsoft.com/en-us/azure/automation/automation-update-management>

### NEW QUESTION 8

#### HOTSPOT

You have an Azure key vault.

You need to delegate administrative access to the key vault to meet the following requirements:

\_ Provide a user named User1 with the ability to set advanced access policies for the key vault. Provide a user named User2 with the ability to add and delete certificates in the key vault. Use the principle of least privilege.

What should you use to assign access to each user? To answer, select the appropriate options in the answer area.

NOTE: Each correct selection is worth one point.

Hot Area:

## Answer Area

User1: 

	▼
A key vault access policy	
Azure Information Protection	
Azure Policy	
Managed identities for Azure resources	
RBAC	

User2: 

	▼
A key vault access policy	
Azure Information Protection	
Azure Policy	
Managed identities for Azure resources	
RBAC	

- A. Mastered  
B. Not Mastered

**Answer:** A

**Explanation:**

User1: RBAC

\_ RBAC is used as the Key Vault access control mechanism for the management plane. It would allow a user with the proper identity to: set Key Vault access policies

\_ create, read, update, and delete key vaults set Key Vault tags

Note: Role-based access control (RBAC) is a system that provides fine-grained access management of Azure resources. Using RBAC, you can segregate duties within your team and grant only the amount of access to users that they need to perform their jobs.

User2: A key vault access policy

A key vault access policy is the access control mechanism to get access to the key vault data plane. Key Vault access policies grant permissions separately to keys, secrets, and certificates.

References:

<https://docs.microsoft.com/en-us/azure/key-vault/key-vault-secure-your-key-vault>

**NEW QUESTION 9**

HOTSPOT

You have two Azure virtual machines in the East US2 region as shown in the following table.

Name	Operating system	Type	Tier
VM1	Windows Server 2008 R2	A3	Basic
VM2	Ubuntu 16.04-DAILY-LTS	L4s	Standard

You deploy and configure an Azure Key vault.

You need to ensure that you can enable Azure Disk Encryption on VM1 and VM2.

What should you modify on each virtual machine? To answer, select the appropriate options in the answer area.

NOTE: Each correct selection is worth one point.

Hot Area:

## Answer Area

VM1:

	▼
The operating system version	
The tier	
The type	

VM2:

	▼
The operating system version	
The tier	
The type	

- A. Mastered  
B. Not Mastered

**Answer:** A

**Explanation:**

VM1: The Tier

The Tier needs to be upgraded to standard.

Disk Encryption for Windows and Linux IaaS VMs is in General Availability in all Azure public regions and Azure Government regions for Standard VMs and VMs with Azure Premium Storage.

VM2: The type

Need to change the VMtype to any of A, D, DS, G, GS, F, and so on, series IaaS VMs.

Not the operating system version: Ubuntu 16.04 is supported. References:

<https://docs.microsoft.com/en-us/azure/security/azure-security-disk-encryption-overview>

[https://docs.microsoft.com/en-us/azure/security/azure-security-disk-encryption-faq#bkmk\\_LinuxOSSupport](https://docs.microsoft.com/en-us/azure/security/azure-security-disk-encryption-faq#bkmk_LinuxOSSupport)

**NEW QUESTION 10**

HOTSPOT

You suspect that users are attempting to sign in to resources to which they have no access.

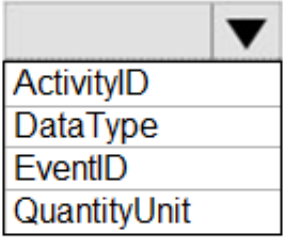
You need to create an Azure Log Analytics query to identify failed user sign-in attempts from the last three days. The results must only show users who had more than five failed sign-in attempts.

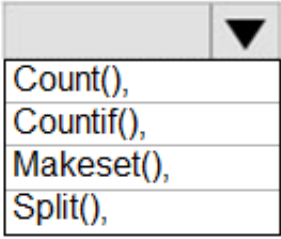
How should you configure the query? To answer, select the appropriate options in the answer area.



NOTE: Each correct selection is worth one point.  
Hot Area:

## Answer Area

```
let timeframe = 3d;
SecurityEvent
| where TimeGenerated > ago(3d)
| where AccountType == 'User' and  ==4625

| Summarize failed_login_attempts= 

latest_failed_login=arg_max(TimeGenerated by Account
| where failed_login_attempts > 5
```

- A. Mastered
- B. Not Mastered

**Answer:** A

### Explanation:

The following example identifies user accounts that failed to log in more than five times in the last day, and when they last attempted to log in. let timeframe = 1d;  
SecurityEvent  
| where TimeGenerated > ago(1d)  
| where AccountType == 'User' and EventID == 4625 // 4625 - failed log in  
| summarize failed\_login\_attempts=count(), latest\_failed\_login=arg\_max(TimeGenerated, Account) by Account  
| where failed\_login\_attempts > 5  
| project-away Account1

References:

<https://docs.microsoft.com/en-us/azure/azure-monitor/log-query/examples>

### NEW QUESTION 10

You have an Azure subscription named Sub1 that contains an Azure Log Analytics workspace named LAW1.  
You have 100 on-premises servers that run Windows Server 2012 R2 and Windows Server 2016. The servers connect to LAW1. LAW1 is configured to collect security-related performance counters from the connected servers.  
You need to configure alerts based on the data collected by LAW1. The solution must meet the following requirements:  
\_ Alert rules must support dimensions.  
\_ The time it takes to generate an alert must be minimized.  
\_ Alert notifications must be generated only once when the alert is generated and once when the alert is resolved.  
Which signal type should you use when you create the alert rules?

- A. Log
- B. Log (Saved Query)
- C. Metric
- D. Activity Log

**Answer:** C

### Explanation:

Metric alerts in Azure Monitor provide a way to get notified when one of your metrics cross a threshold. Metric alerts work on a range of multi-dimensional platform metrics, custom metrics, Application Insights standard and custom metrics.

Note: Signals are emitted by the target resource and can be of several types. Metric, Activity log, Application Insights, and Log. References:

<https://docs.microsoft.com/en-us/azure/azure-monitor/platform/alerts-metric>

### NEW QUESTION 11

You have an Azure subscription that contains an Azure key vault named Vault1.  
In Vault1, you create a secret named Secret1.  
An application developer registers an application in Azure Active Directory (Azure AD). You need to ensure that the application can use Secret1.  
What should you do?

- A. In Azure AD, create a role.
- B. In Azure Key Vault, create a key.
- C. In Azure Key Vault, create an access policy.
- D. In Azure AD, enable Azure AD Application Proxy.

**Answer:** A

### Explanation:

Azure Key Vault provides a way to securely store credentials and other keys and secrets, but your code needs to authenticate to Key Vault to retrieve them. Managed identities for Azure resources overview makes solving this problem simpler, by giving Azure services an automatically managed identity in Azure Active Directory (Azure AD). You can use this identity to authenticate to any service that supports Azure AD authentication, including Key Vault, without having any credentials in your code.

Example: How a system-assigned managed identity works with an Azure VM

After the VM has an identity, use the service principal information to grant the VM access to Azure resources. To call Azure Resource Manager, use role-based access control (RBAC) in Azure AD to assign the appropriate role to the VM service principal. To call Key Vault, grant your code access to the specific secret or key in Key Vault.

References:

<https://docs.microsoft.com/en-us/azure/key-vault/quick-create-net>

<https://docs.microsoft.com/en-us/azure/active-directory/managed-identities-azure-resources/overview>

## NEW QUESTION 16

### HOTSPOT

You have the Azure Information Protection conditions shown in the following table.

Name	Pattern	Case sensitivity
Condition1	White	On
Condition2	Black	Off

You have the Azure Information Protection labels shown in the following table.

Name	Applies to	Use label	Set the default label
Global	<i>Not applicable</i>	<i>None</i>	<i>None</i>
Policy1	User1	Label1	<i>None</i>
Policy2	User1	Label2	<i>None</i>

You need to identify how Azure Information Protection will label files.

What should you identify? To answer, select the appropriate options in the answer area.

NOTE: Each correct selection is worth one point.

Hot Area:

### Answer Area

If User1 creates a Microsoft Word file that includes the text "Black and White", the file will be assigned:

No label  
Label1 only  
Label2 only  
Label1 and Label2

If User1 creates a Microsoft Notepad file that includes the text "Black or white", the file will be assigned:

No label  
Label1 only  
Label2 only  
Label1 and Label2

- A. Mastered
- B. Not Mastered

**Answer:** A

### Explanation:

Box 1: Label 2 only

How multiple conditions are evaluated when they apply to more than one label

1. The labels are ordered for evaluation, according to their position that you specify in the policy: The label positioned first has the lowest position (least sensitive) and the label positioned last has the highest position (most sensitive).

2. The most sensitive label is applied.

3. The last sublabel is applied.

Box 2: No Label

Automatic classification applies to Word, Excel, and PowerPoint when documents are saved, and apply to Outlook when emails are sent. Automatic classification does not apply to Microsoft Notepad.

References:

<https://docs.microsoft.com/en-us/azure/information-protection/configure-policy-classification>

## NEW QUESTION 17

.....



## THANKS FOR TRYING THE DEMO OF OUR PRODUCT

Visit Our Site to Purchase the Full Set of Actual az-500 Exam Questions With Answers.

We Also Provide Practice Exam Software That Simulates Real Exam Environment And Has Many Self-Assessment Features. Order the az-500 Product From:

<https://www.2passeasy.com/dumps/az-500/>

## Money Back Guarantee

### az-500 Practice Exam Features:

- \* az-500 Questions and Answers Updated Frequently
- \* az-500 Practice Questions Verified by Expert Senior Certified Staff
- \* az-500 Most Realistic Questions that Guarantee you a Pass on Your FirstTry
- \* az-500 Practice Test Questions in Multiple Choice Formats and Updatesfor 1 Year