

400-007 Dumps

Cisco Certified Design Expert (CCDE v3.0) Written Exam

<https://www.certleader.com/400-007-dumps.html>



NEW QUESTION 1

SDWAN networks capitalize the usage of broadband Internet links over traditional MPLS links to offer more cost benefits to enterprise customers. However, due to the insecure nature of the public Internet, it is mandatory to use encryption of traffic between any two SDWAN edge devices installed behind NAT gateways. Which overlay method can provide optimal transport over unreliable underlay networks that are behind NAT gateways?

- A. TLS
- B. DTLS
- C. IPsec
- D. GRE

Answer: C

NEW QUESTION 2

As part of workspace digitization, a large enterprise has migrated all their users to Desktop as a Service (DaaS), by hosting the backend system in their on-premises data center. Some of the branches have started to experience disconnections to the DaaS at periodic intervals, however, local users in the data center and head office do not experience this behavior. Which technology can be used to mitigate this issue?

- A. tail drop
- B. traffic shaping
- C. WRED
- D. traffic policing

Answer: B

Explanation:

Traffic Shaping does help with congestion and better bandwidth utilization over the WAN.

NEW QUESTION 3

An enterprise has identified these causes for inefficient CAPEX spending:

- CAPEX planning is driven by technology and not by business objectives.
- The CAPEX planning team lacks the data it needs to perform due diligence tasks.
- The organizational structure lacks sufficient accountability and incentives.

Which corporate cultural change contributes to improving the effectiveness of CAPEX spending?

- A. Build a financial control function that delivers high-quality reports on operational expenses for business insight and financial reporting.
- B. CxO-level staff must have a full technical understanding but they should not trust their technical leaders fully.
- C. Adopt new organizational models that promote real accountability for RO
- D. not just revenue
- E. EBITDA, and cash.
- F. Marketing and product management divisions must reduce their CAPEX budgets significantly to drive the change.

Answer: C

NEW QUESTION 4

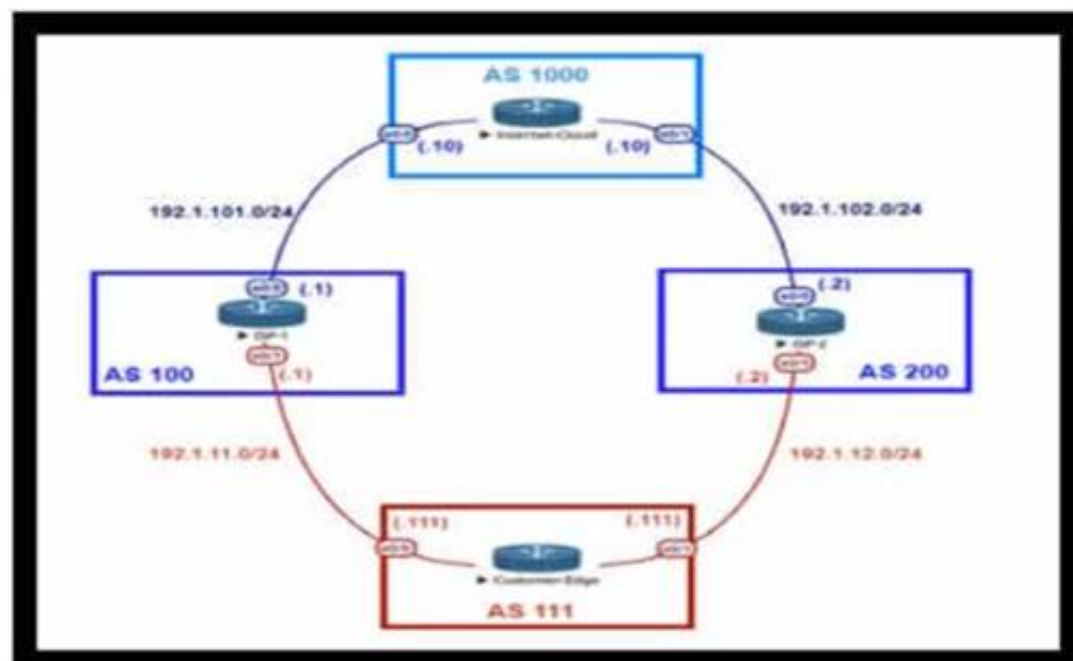
You are designing a network running both IPv4 and IPv6 to deploy QoS. Which consideration is correct about the QoS for IPv4 and IPv6?

- A. IPv4 and IPv6 traffic types can use queuing mechanisms such as LLQ, PQ and CQ.
- B. IPv6 packet classification is only available with process switching, whereas IPv4 packet classification is available with both process switching and CEF.
- C. IPv6 and IPv4 traffic types can use a single QoS policy to match both protocols
- D. Different congestion management mechanisms need to be used for IPv4 and IPv6 traffic types

Answer: C

NEW QUESTION 5

Refer to the exhibit.



An engineer is designing the traffic flow for AS 111. Traffic from AS 111 should be preferred via AS 100 for all external routes. A method must be used that only

affects AS 111. Which BGP attributes are best suited to control outbound traffic?

- A. community
- B. MED
- C. local preference
- D. As path

Answer: C

NEW QUESTION 6

Which two features are advantages of SD-WAN compared to MPLS-based connectivity? (Choose two.)

- A. uses FEC constructs for traffic forwarding, thereby improving efficiency
- B. separates infrastructure and policy
- C. uses policy-based forwarding of real-time traffic with less complexity
- D. unifies the WAN backbone
- E. manages failures through backup links

Answer: CD

NEW QUESTION 7

Which solution component helps to achieve rapid migration to the cloud for SaaS and public cloud leveraging SD-WAN capabilities?

- A. service-oriented cloud architecture
- B. Cloud onramp
- C. cloud registry
- D. microservices in the cloud

Answer: B

NEW QUESTION 8

A Service Provider is designing a solution for a managed CE service to a number of local customers using a single CE platform and wants to have logical separation on the CE platform using Virtual Routing and Forwarding (VRF) based on IP address ranges or packet length. Which is the most scalable solution to provide this type of VRF Selection process on the CE edge device?

- A. Static Routes for Route Leaking
- B. Policy Based Routing
- C. OSPF per VRF Instance
- D. Multi-Protocol BGP

Answer: B

NEW QUESTION 9

Which purpose of a dynamically created tunnel interface on the design of IPv6 multicast services is true?

- A. first-hop router registration to the RP
- B. multicast client registration to the RP
- C. multicast source registration to the RP
- D. transport of all IPv6 multicast traffic

Answer: D

NEW QUESTION 10

Software-defined networking architecture is used for cost-effective, adaptable, and easily manageable applications. In which two software-defined networks is SDN commonly used? (Choose two.)

- A. wide area network
- B. mobile network
- C. metro network
- D. application network
- E. control network

Answer: AE

NEW QUESTION 10

Company XYZ is in the process of identifying which transport mechanism(s) to use as their WAN technology. Their main two requirements are.

- a technology that could offer DPI, SLA, secure tunnels, privacy, QoS, scalability, reliability, and ease of management
- a technology that is cost-effective

Which WAN technology(ies) should be included in the design of company XYZ?

- A. Software-defined WAN should be the preferred choice because it complements both technologies, covers all the required features, and it is the most cost-effective solution.
- B. Internet should be the preferred option because it is cost effective and supports BFD, IP SL
- C. and IPsec for secure transport over the public Internet.
- D. Both technologies should be use
- E. Each should be used to back up the other one; where the primary links are MPLS, the internet should be used as a backup link with IPsec (and vice versa).
- F. MPLS meets all these requirements and it is more reliable than using the Internet

G. It is widely used with defined best practices and an industry standard.

Answer: A

NEW QUESTION 14

What are two design constraints in a standard spine and leaf architecture? (Choose two.)

- A. Spine switches can connect to each other.
- B. Each spine switch must connect to every leaf switch.
- C. Leaf switches must connect to each other.
- D. Endpoints connect only to the spine switches.
- E. Each leaf switch must connect to every spine switch.

Answer: BE

NEW QUESTION 18

A network design includes a long signaling delay in notifying the Layer 3 control plane that an interface has failed Which two of these actions would reduce that delay? (Choose two.)

- A. Increase network stability.
- B. Reduce the time for the network to reconverge.
- C. Increase the notification of interface flaps.
- D. Enable lower data link layer recovery systems to have an opportunity to restore the interface

Answer: BD

NEW QUESTION 19

A financial company requires that a custom TCP-based stock-trading application be prioritized over all other traffic for the business due to the associated revenue. The company also requires that VoIP be prioritized for manual trades. Which directive should be followed when a QoS strategy is developed for the business?

- A. Allow VoIP and the custom application to share the same priority queue,
- B. The custom application and VoIP must be assigned their own separate priority queue.
- C. Interleave the custom application with other TCP applications in the same CBWR
- D. Avoid placing the custom application in a CBWFQ queue that contains other

Answer: C

NEW QUESTION 20

What are two descriptions of network optimization? (Choose two.)

- A. maintain high availability
- B. proactive network management
- C. network redesign
- D. network health maintenance
- E. identify network requirements

Answer: AD

NEW QUESTION 21

You are designing a network for a branch office. In order to improve convergence time, you are required to use the BFD feature Which four routing protocols can you use to facilitate this? (Choose four.)

- A. IS-IS
- B. static
- C. RIP
- D. EIGRP
- E. BGP

Answer: ABDE

NEW QUESTION 24

Which three components are part of the foundational information security principles of the CIA triad? (Choose three.)

- A. cryptography
- B. confidentiality
- C. authorization
- D. identification
- E. integrity
- F. availability

Answer: BEF

NEW QUESTION 26

Company XYZ has 30 sites running a legacy private WAN architecture that connects to the Internet via multiple high- speed connections The company is now redesigning their network and must comply with these design requirements :

- Use a private WAN strategy that allows the sites to connect to each other directly and caters for future expansion.
- Use the Internet as the underlay for the private WAN.
- Securely transfer the corporate data over the private WAN.

Which two technologies should be Incorporated into the design of this network? (Choose two.)

- A. S-VTI
- B. IPsec
- C. DMVPN
- D. GET VPN
- E. PPTP

Answer: BC

NEW QUESTION 28

An architect designs a multi-controller network architecture with these requirements:

- Achieve fast failover to control traffic when controllers fail.
- Reduce connectivity loss and enable smart recovery to improve the SDN survivability.
- Improve connectivity by adding path diversity and capacity awareness for controllers.

Which control plane component of the multi-controller must be built to meet the requirements?

- A. control node reliability
- B. controller stale consistency
- C. control path reliability
- D. controller clustering

Answer: B

NEW QUESTION 31

A business requirement stating that failure of WAN access for dual circuits into an MPLS provider for a Data Centre cannot happen due to related service credits that would need to be paid has led to diversely routed circuits to different points of presence on the providers network? What should a network designer also consider as part of the requirement?

- A. Provision of an additional MPLS provider
- B. Out of band access to the MPLS routers
- C. Ensuring all related remote branches are dual homed to the MPLS network
- D. Dual PSUs & Supervisors on each MPLS router

Answer: A

NEW QUESTION 36

Identity and access management between multiple users and multiple applications has become a mandatory requirement for Company XYZ to fight against ever increasing cybersecurity threats. To achieve this, federated identity services have been deployed in the Company XYZ network to provide single sign-on and Multi-Factor Authentication for the applications and services. Which protocol can be used by Company XYZ to provide authentication and authorization services?

- A. OAuth2
- B. OpenID Connect
- C. OpenID
- D. SAML2.0

Answer: D

NEW QUESTION 41

Hybrid cloud computing allows organizations to like advantage of public and private cloud models Which best practice should organizations follow to ensure data security in the private cloud?

- A. Use standard protocols for data transmission over the network.
- B. Encrypt data when it is at rest and in motion
- C. Communicate all data security risks to customers and end users.
- D. Use standard network protocols for data communication between unsecured network connections.

Answer: B

NEW QUESTION 43

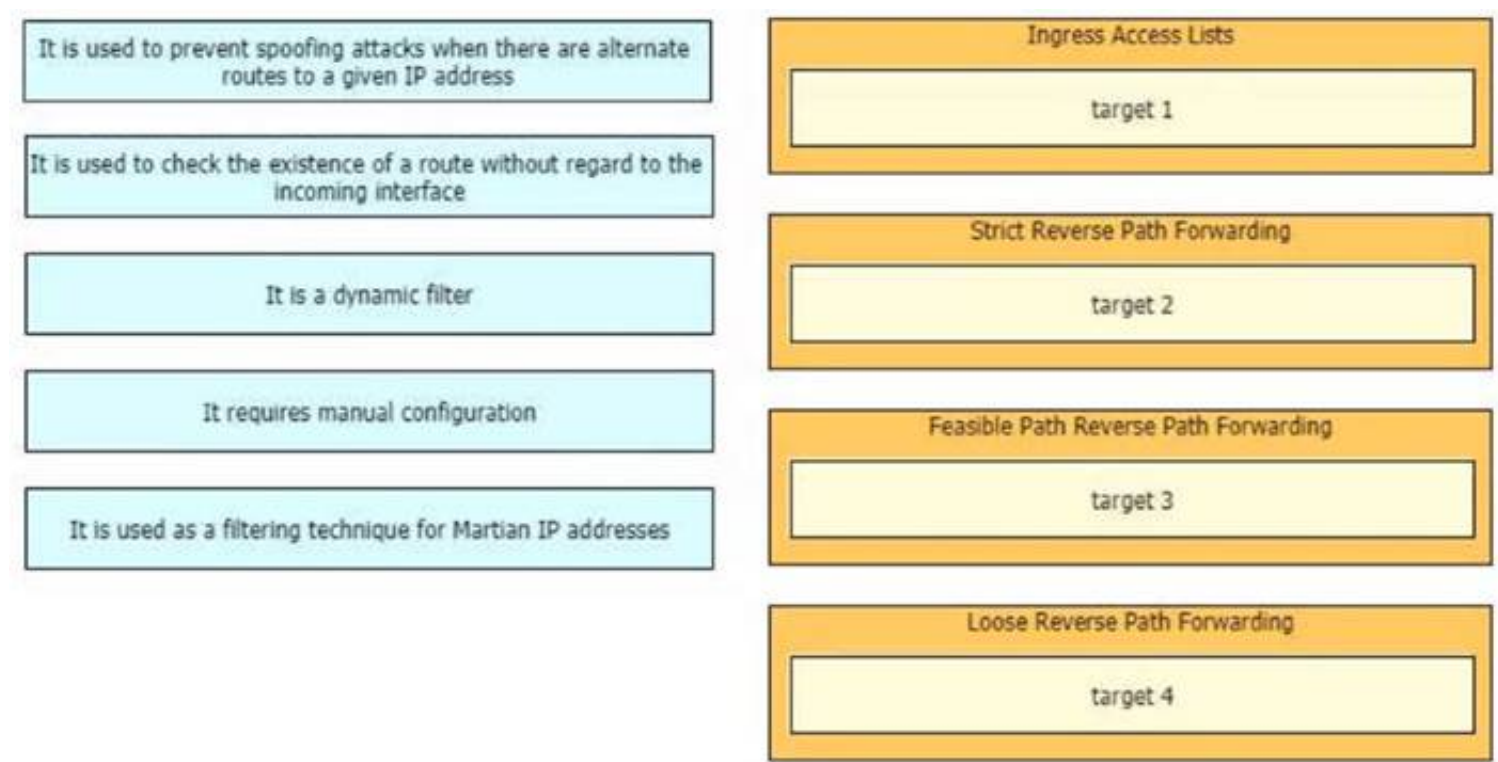
Sometimes SDN leverages various overlay networking technologies to create layer(s) of network abstraction. What describes an overlay network?

- A. It transmits packets that traverse over network devices like switches and routers
- B. It encapsulates packets at source and destination, which incurs additional overhead
- C. Packet delivery and reliability occurs at Layer 3 and Layer 4
- D. It is responsible for the delivery of packets; NAT- or VRF-based segregation is required

Answer: B

NEW QUESTION 48

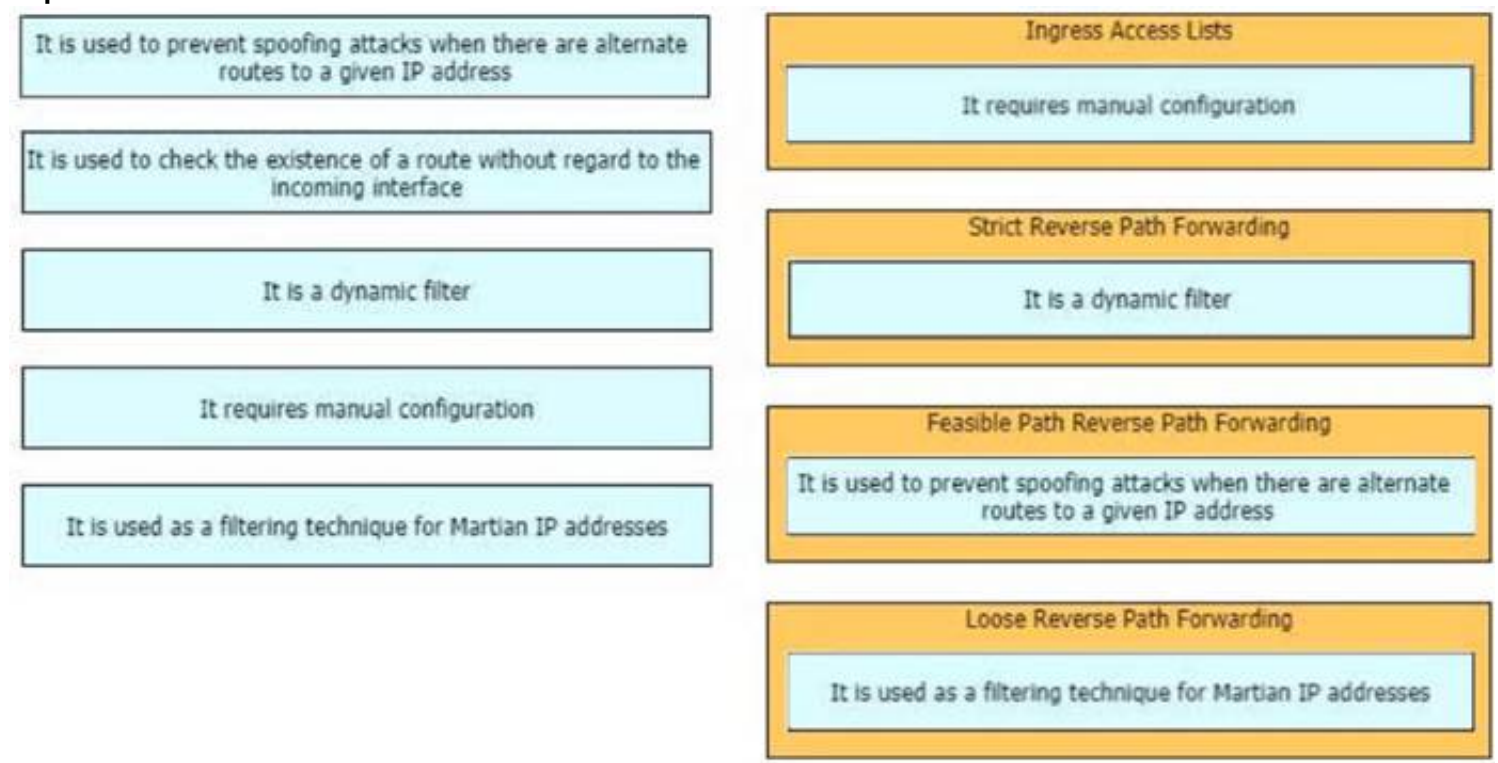
Drag and drop the design characteristics from the left onto the correct network filter techniques on the right. Not all options are used.



- A. Mastered
- B. Not Mastered

Answer: A

Explanation:



NEW QUESTION 50

Which feature must be part of the network design to wait a predetermined amount of time before notifying the routing protocol of a change in the path in the network?

- A. Transmit delay
- B. Throttle timer
- C. SPF hold time
- D. Interface dampening

Answer: B

NEW QUESTION 55

Company XYZ wants to redesign the Layer 2 part of their network and wants to use all available uplinks for increased performance. They also want to have end host reachability supporting conversational learning. However, due to design constraints, they cannot implement port-channel on the uplinks. Which other technique can be used to make sure the uplinks are in active/active state?

- A. TRILL
- B. LISP
- C. MSTP
- D. switch stack

Answer: B

NEW QUESTION 56

In the case of outsourced IT services, the RTO is defined within the SLA. Which two support terms are often included in the SLA by IT and other service providers? (Choose two.)

- A. network size and cost
- B. support availability
- C. network sustainability
- D. network reliability
- E. resolution time

Answer: BE

NEW QUESTION 61

Which three elements help network designers to construct secure systems that protect information and resources (such as devices, communication, and data) from unauthorized access, modification, inspection, or destruction? (Choose three.)

- A. confidential
- B. serviceability
- C. reliability
- D. availability
- E. integrity
- F. scalability

Answer: ADE

NEW QUESTION 63

Refer to the table.

CONNECTIVITY	CAPEX	OPEX ANNUAL	INSTALLATION FEE	TERM
DWDM over dark fiber	\$200,000	\$100,000	\$30,000	12 months
CWDM over dark fiber	\$150,000	\$100,000	\$25,000	18 months
MPLS wires only	\$50,000	\$180,000	\$5,000	12 months
Metro Ethernet	\$65,000	\$100,000	\$5,000	36 months

A customer investigates connectivity options for a DCI between two production data centers to aid a large-scale migration project. The migration is estimated to take 20 months to complete but might extend an additional 10 months if issues arise. All connectivity options meet the requirements to migrate workloads. Which transport technology provides the best ROI based on cost and flexibility?

- A. CWDM over dark fiber
- B. MPLS
- C. DWDM over dark fiber
- D. Metro Ethernet

Answer: D

NEW QUESTION 65

A healthcare customer requested that SNMP traps must be sent over the MPLS Layer 3 VPN service. Which protocol must be enabled?

- A. SNMPv3
- B. Syslog
- C. Syslog TLS
- D. SNMPv2
- E. SSH

Answer: A

NEW QUESTION 66

The controller has a global view of the network, and it can easily ensure that the network is in a consistent and optimal configuration. Which two statements describe a centralized SDN control path? (Choose two.)

- A. Scaling of the centralized controller cluster is challenging for services like DHCP and load-balancing.
- B. It is highly-available by design with no single-point-of-failure risks present.
- C. Integrating smart NIC capabilities on the local host level is made easier through rest APIs.
- D. It significantly improves the latency when performing reactive handling of PACKET_IN events.
- E. It centralized controller can support all southbound APIs, which allows for easy integration with legacy equipment.

Answer: AE

NEW QUESTION 71

A small organization of 20 employees is looking to deliver a network design service for modernizing customer networks to support advanced solutions.

- Project scope and weekly progress should be visualized by the management.
- Always consider feedback and make changes accordingly during the project.
- Should consider flexibility to change scope at the point of time.

Which project methodology meets the requirements and have the least impact on the outcome?

- A. Scrum

- B. LEAN
- C. Kanban
- D. Six-Sigma

Answer: A

Explanation:

<https://firebrand.training/uk/blog/scrum-vs-six-sigma-which-one-is-right-for-you>

NEW QUESTION 76

Company ABC uses IPv4-only. Recently they started deploying new endpoint devices. For operational reasons, IPv6 cannot be disabled on these new endpoint devices. Which security measure prevents the new endpoint from learning an IPv6 prefix from an attacker?

- A. Source Guard and Prefix Guard
- B. Router Advertisement Guard
- C. Prefix Guard
- D. Secure Neighbor Discovery

Answer: B

NEW QUESTION 79

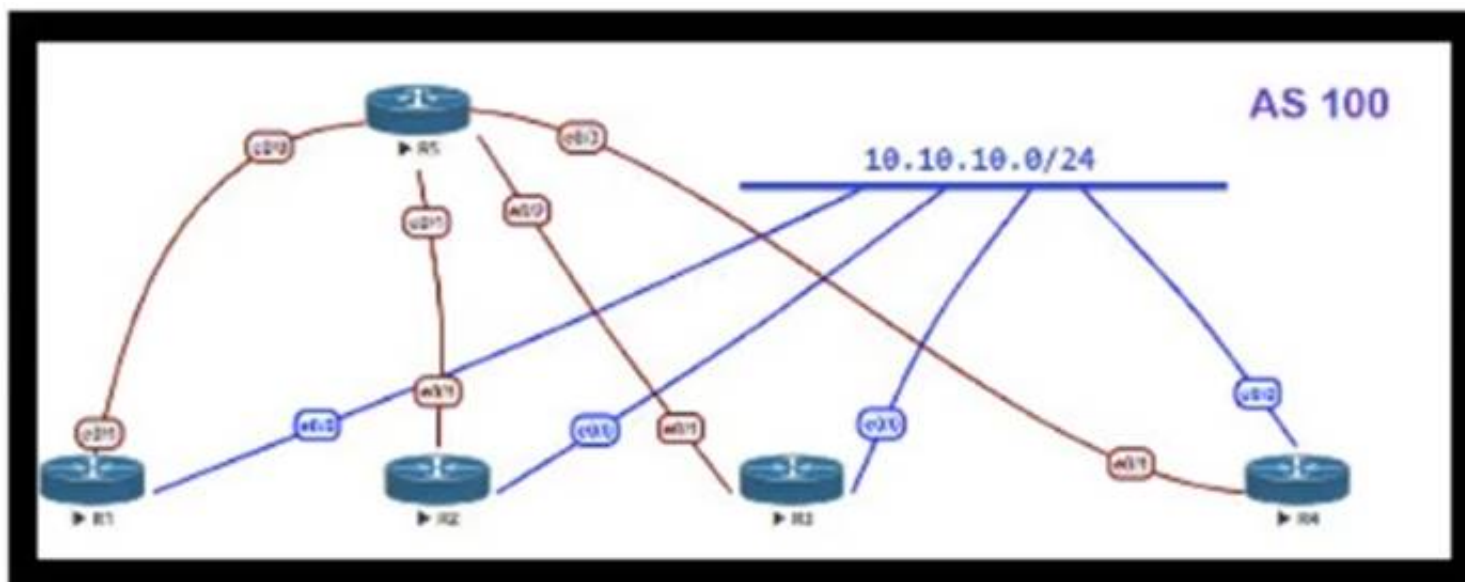
Which tool automates network implementation activities and shortens the implementation lifecycle?

- A. LISP
- B. Java
- C. Conclusion
- D. Python

Answer: D

NEW QUESTION 81

Refer to the exhibit.



OSPF is running as the IGP to provide reachability to all AS100 networks R3 and R4 are the current ABRs at the boundary of OSPF Area0 and Areal Now BGP must be deployed within AS 100 because it will be receiving Internet routes from its eBGP peers (the service provider) connected to R1 and R2 What is an optimal solution for this deployment to configure BGP relationships and redistribute BGP learned routes into OSPF?

- A. R5 should be configured as a route reflector for R1, R2, R3 and R4. BGP routes must be redistributed at R1 and R2 into OSPF.
- B. Configuration should be set up with R1 and R2, and R3 in one sub AS, with and R4 in another, and redistribution at R1 and R2.
- C. A full mesh should be deployed between all the routers with mutual redistribution to take place at R1 and R2.
- D. R1, R2, R3 and R4 must be set up with a neighbor relationship with R5 only must not be a routereflector.

Answer: C

NEW QUESTION 82

You are designing an Out of Band Cisco Network Admission Control. Layer 3 Real-IP Gateway deployment for a customer Which VLAN must be trunked back to the Clean Access Server from the access switch?

- A. authentication VLAN
- B. user VLAN
- C. untrusted VLAN
- D. management VLAN

Answer: D

NEW QUESTION 87

A network security team uses a purpose-built tool to actively monitor the campus network, applications, and user activity. The team also analyzes enterprise telemetry data from IPFIX data records that are received from devices in the campus network. Which action can be taken based on the augmented data?

- A. reduction in time to detect and respond to threats
- B. integration with an incident response plan

- C. adoption and improvement of threat-detection response
- D. asset identification and grouping decisions

Answer: A

NEW QUESTION 91

Company XYZ is planning to deploy primary and secondary (disaster recovery) data center sites. Each of these sites will have redundant SAN fabrics and data protection is expected between the data center sites. The sites are 100 miles (160 km) apart and target RPO/RTO are 3 hrs and 24 hrs, respectively. Which two considerations must Company XYZ bear in mind when deploying replication in their scenario? (Choose two.)

- A. Target RPO/RTO requirements cannot be met due to the one-way delay introduced by the distance between sites.
- B. VSANs must be routed between sites to isolate fault domains and increase overall availability.
- C. Synchronous data replication must be used to meet the business requirements
- D. Asynchronous data replication should be used in this scenario to avoid performance impact in the primary site.
- E. VSANs must be extended from the primary to the secondary site to improve performance and availability.

Answer: CD

Explanation:

synchronous data replication must be used to meet the business requirements, is incorrect. As described above, asynchronous replication would be a better choice in this scenario due to the distance between the data center sites and the target RPO/RTO requirements.

asynchronous data replication should be used in this scenario to avoid performance impact in the primary site, is correct. Asynchronous replication would allow Company XYZ to meet the target RPO/RTO requirements while avoiding the performance impact of synchronous replication.

NEW QUESTION 95

You are designing the QoS policy for a company that is running many TCP-based applications. The company is experiencing tail drops for these applications. The company wants to use a congestion avoidance technique for these applications. Which QoS strategy can be used to fulfill the requirement?

- A. weighted fair queuing
- B. weighted random early detection
- C. low-latency queuing
- D. first-in first-out

Answer: C

NEW QUESTION 97

A Tier-3 Service Provider is evolving into a Tier-2 Service Provider due to the amount of Enterprise business it is receiving. The network engineers are re-evaluating their IP/MPLS design considerations in order to support duplicate/overlapping IP addressing from their Enterprise customers within each Layer3 VPN. Which concept would need to be reviewed to ensure stability in their network?

- A. Assigning unique Route Distinguishers
- B. Assigning unique Route Target ID'S
- C. Assigning unique IP address space for the Enterprise NAT/Firewalls
- D. Assigning unique VRF ID's to each L3VPN

Answer: A

NEW QUESTION 100

Which two statements explain the operation of BFD asynchronous mode? (Choose two)

- A. BFD asynchronous mode with echo packets combines the control packets and echo packets into a single packet.
- B. BFD asynchronous mode without echo packets uses control packets, and BFD asynchronous mode with echo packets does not.
- C. BFD asynchronous mode with and without echo packets use control packets.
- D. BFD asynchronous without echo packets has control packets sent back to the originating router, which echoes the control packet to detect failures.
- E. BFD asynchronous mode with echo packets uses separate control packets and echo packets.

Answer: CE

NEW QUESTION 102

Which two technologies enable multilayer segmentation? (Choose two.)

- A. policy-based routing
- B. segment routing
- C. data plane markings
- D. firewalls
- E. filter lists

Answer: AD

NEW QUESTION 105

An enterprise plans to evolve from a traditional WAN network to a software-defined WAN network. The existing devices have limited capability when it comes to virtualization. As the migration is carried out, enterprise applications and services must not experience any traffic impact. Which implementation plan can be used to accommodate this during the migration phase?

- A. Deploy controllers, deploy SD-WAN edge router
- B. In the data center, and migrate branch sites.
- C. Migrate data center WAN routers, migrate branch sites, and deploy SD-WAN edge routers.

- D. Migrate branch sites, migrate data center WAN routers, and deploy controllers.
- E. Deploy SD-WAN edge routers in the data center, deploy controllers, and migrate branch sites

Answer: A

NEW QUESTION 108

The network team in XYZ Corp wants to modernize their infrastructure and is evaluating an implementation and migration plan to allow integration MPLS-based, Layer 2 Ethernet services managed by a service provider to connect branches and remote offices. To decrease OpEx and improve response times when network components fail, XYZ Corp decided to acquire and deploy new routers. The network currently is operated over E1 leased lines (2 Mbps) with a managed CE service provided by the telco.

Drag and drop the implementation steps from the left onto the corresponding targets on the right in the correct order.

Activation of the MPLS-based L2VPN service.	Step 1
Monitor performance of the Ethernet service for a predefined period of time.	Step 2
Decomission E1 leased line.	Step 3
Deployment of new branch routers.	Step 4
Test and validation of SLA parameters in the L2VPN.	Step 5
Migrate E1 to the new Ethernet service.	Step 6

- A. Mastered
- B. Not Mastered

Answer: A

Explanation:

Table Description automatically generated

NEW QUESTION 111

A European government passport agency considers upgrading its IT systems to increase performance and workload flexibility in response to constantly changing requirements. The budget manager wants to reduce capital expenses and IT staff and must adopt the lowest-cost technology. Which technology choice is suitable?

- A. on premises
- B. private cloud
- C. public cloud
- D. hybrid cloud

Answer: B

NEW QUESTION 116

Company XYZ wants to use the FCAPS ISO standard for network management design. The focus of the design should be to monitor and keep track of any performance issues by continuously collecting and analyzing statistical information to monitor, correct, and optimize any reduced responsiveness across the network. Which layer accomplishes this design requirement?

- A. fault management
- B. accounting management
- C. performance management
- D. security management

Answer: C

NEW QUESTION 121

A healthcare provider discovers that protected health information of patients was altered without patient consent. The healthcare provider is subject to HIPAA compliance and is required to protect PHI data. Which type of security safeguard should be implemented to resolve this issue?

- A. technical and physical access control
- B. administrative security management processes
- C. physical device and media control
- D. technical integrity and transmission security

Answer: D

Explanation:

https://www.cisco.com/en/US/docs/solutions/Enterprise/Compliance/HIPAA/HIP_AppC.html#wp1085353

NEW QUESTION 124

Company XYZ is running a redundant private WAN network using OSPF as the underlay protocol. The current design accommodates for redundancy in the network, but it is taking over 30 seconds for the network to reconverge upon failure. Which technique can be implemented in the design to detect such a failure in a subsecond?

- A. STP
- B. fast hello
- C. OSPF LFA
- D. BFD
- E. flex links

Answer: D

NEW QUESTION 127

In search of a system capable of hosting, monitoring, compiling, and testing code in an automated way, what can be recommended to the organization?

- A. Jenkins
- B. Ansible
- C. Perl
- D. Chef

Answer: A

NEW QUESTION 131

An external edge router provides connectivity from a service provider to an enterprise. Which two Internet edge best practices meet compliance regulations? (Choose two)

- A. Implement filtering to control traffic that is sourced from the infrastructure IP space.
- B. Enable and use only secure protocols.
- C. Send logs to a centralized logging collection server.
- D. Implement EBGP to advertise all owned IP blocks.
- E. Use login banners and interface access lists to restrict administrative access to the system.

Answer: BE

NEW QUESTION 132

Company XYZ network runs IPv4 and IPv6 and they want to introduce a multidomain, multicast-based network. The new design should use a flavor of PIM that forwards traffic using SPT. Which technology meets this requirement?

- A. PIM-DM
- B. PIM-SM
- C. PIM-SSM
- D. BIDIR-PIM

Answer: C

NEW QUESTION 133

An engineer is designing a DMVPN network where OSPF has been chosen as the routing protocol. A spoke-to-spoke intra propagation model must be set up. Which two design considerations must be taken into account? (Choose two)

- A. Configure all the sites as network type broadcast
- B. The network type on all sites should be point-to-multipoint
- C. The network type should be point-to-multipoint for the hub and point-to-point for the spokes.
- D. The hub should be set as the DR by specifying the priority to 255.
- E. The hub should be the DR by changing the priority of the spokes to 0.

Answer: AE

NEW QUESTION 137

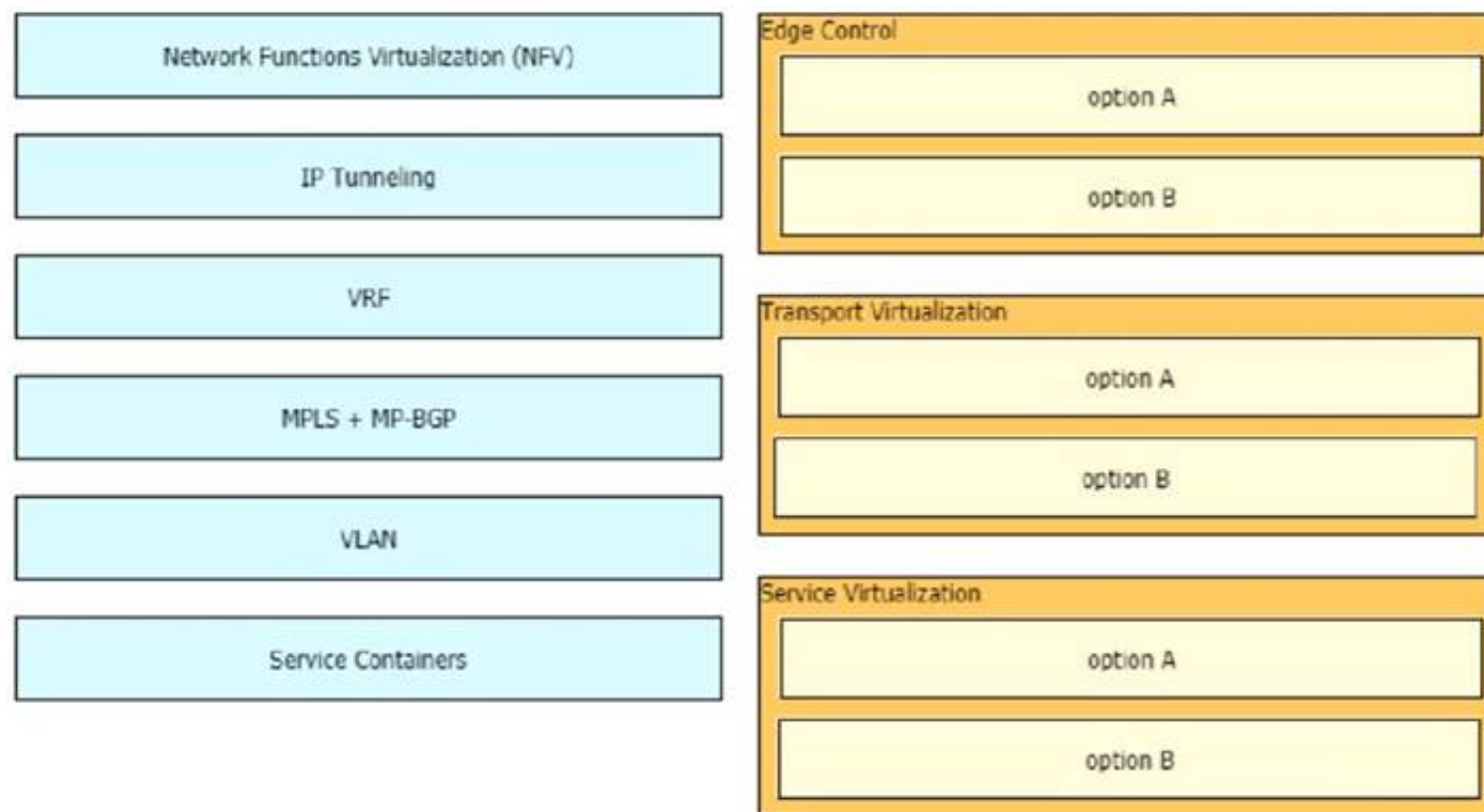
Company XYZ is revisiting the security design for their data center because they now have a requirement to control traffic within a subnet and implement deep packet inspection. Which technology meets the updated requirements and can be incorporated into the design?

- A. routed firewall
- B. VLAN ACLs on the switch
- C. transparent firewall
- D. zone-based firewall on the Layer 3 device

Answer: C

NEW QUESTION 138

Drag and drop the end-to-end network virtualization elements from the left onto the correct network areas on the right.



- A. Mastered
- B. Not Mastered

Answer: A

Explanation:

Graphical user interface Description automatically generated with medium confidence

NEW QUESTION 141

An architect prepares a network design for a startup company. The design must be able to meet business requirements while the business grows and divests due to rapidly changing markets. What is the highest priority in this design?

- A. The network should be hierarchical
- B. The network should be modular.
- C. The network should be scalable.
- D. The network should have a dedicated core.

Answer: A

NEW QUESTION 146

Which two statements describe the usage of the IS-IS overload bit technique? (Choose two)

- A. If overload-bit is set on a Level 2 intermediate system, the other Level 2 intermediate systems in the topology will stop using the overloaded IS to forward Level 2 traffic. However, the intermediate system can still forward Level 1 traffic.
- B. It can be set in intermediate systems (IS-IS routers) to prioritize control plane CSNP packets.
- C. It can be used to automatically synchronize the link-state database between Level 1 intermediate systems.
- D. It can be set in intermediate systems (IS-IS routers) to avoid traffic black holes until routing protocols are fully converged after a reload operation.
- E. It can be set in intermediate systems (IS-IS routers) to attract transit traffic from other intermediate systems.

Answer: AD

NEW QUESTION 148

A customer has a functional requirement that states HR systems within a data center should be segmented from other systems that reside in the same data center and same VLAN. The systems run legacy applications by using hard-coded IP addresses. Which segmentation method is suitable and scalable for the customer?

- A. data center perimeter firewalling
- B. VACLs on data center switches
- C. transparent firewalling
- D. routed firewalls

Answer: B

NEW QUESTION 150

An enterprise wants to migrate an on-premises network to a cloud network, and the design team is finalizing the overall migration process. Drag and drop the options from the left into the correct order on the right.

Identify the right applications and portfolio for cloud migration and cloud viability.	step 1
Maintain data integrity and operational continuity.	step 2
Adopt end-to-end approach and transition workloads to the cloud environment.	step 3
Develop cloud strategy and ensure alignment with business requirements.	step 4
Secure the cloud by setting up a secure cloud environment based on the workload requirements.	step 5
Monitor and manage cloud-based systems, including customer services.	step 6

- A. Mastered
B. Not Mastered

Answer: A

Explanation:

Table Description automatically generated

NEW QUESTION 155

Company XYZ is running OSPF in their network. They have merged with another company that is running EIGRP as the routing protocol. Company XYZ now needs the two domains to talk to each other with redundancy, while maintaining a loop free environment. The solution must scale when new networks are added into the network in the near future. Which technology can be used to meet these requirements?

- A. multipoint route-redistribution with route filtering using ACLs
B. DUMP multipoint route-redistribution with route filtering using route tags
C. DUMPS single point route-redistribution with route filtering using route tags
D. DUMPS single point route-redistribution with route filtering using ACLs

Answer: B

NEW QUESTION 160

Which two application requirements are mandatory for traffic to receive proper treatment when placed in the priority queue? (Choose two.)

- A. small transactions (HTTP-like behavior)
B. WRED drop treatment
C. tolerance to packet loss
D. intolerance to jitter
E. TCP-based application

Answer: AD

NEW QUESTION 165

A customer migrates from a traditional Layer 2 data center network into a new SDN-based, spine-and-leaf VXLAN EVPN data center within the same location. The networks are joined to enable host migration at Layer 2 Which activity should be completed each time a legacy network is migrated?

- A. The migrated VLAN should be pruned from the Layer 2 interconnects.
B. The migrated network should have a VXLAN VNID configured within the new network.
C. The migrated network should be advertised to the EVPN network as a Type 2 network.
D. The migrated network should be added to the EVPN BGP routing.

Answer: C

NEW QUESTION 166

Which function is performed at the access layer of the three-layer hierarchical network design model?

- A. fault isolation
B. QoS classification and marking boundary
C. reliability
D. fast transport
E. redundancy and load balancing

Answer: B

NEW QUESTION 170

Organizations that embrace Zero Trust initiatives ranging from business policies to technology infrastructure can reap business and security benefits. Which two domains should be covered under Zero Trust initiatives? (Choose two)

- A. workload
- B. work domain
- C. workplace
- D. workgroup
- E. workspace

Answer: AC

NEW QUESTION 174

What are two key design principles when using a hierarchical core-distribution-access network model? (Choose two)

- A. A hierarchical network design model aids fault isolation
- B. The core layer is designed first, followed by the distribution layer and then the access layer
- C. The core layer provides server access in a small campus.
- D. A hierarchical network design facilitates changes
- E. The core layer controls access to resources for security

Answer: AD

NEW QUESTION 178

You are designing a large-scale DMVPN network with more than 500 spokes using EIGRP as the IGP protocol Which design option eliminates potential tunnel down events on the spoke routers due to the holding time expiration?

- A. Increase the hold queue on the physical interface of the hub router.
- B. Increase the hold queue on the tunnel interface of the spoke routers
- C. Increase the hold queue on the tunnel interface of the hub router
- D. Apply QoS for pak_priority class
- E. Increase the hold queue on the physical interface of the spoke routers.

Answer: C

NEW QUESTION 181

A banking customer determines that it is operating POS and POI terminals that are noncompliant with PCI DSS requirements, as it is running TLSv1.0. The customer plans to migrate the terminals to TLSv1.2. What are two requirements to complete the migration? (Choose two.)

- A. Ensure that strong cryptography is applied for users who have administrative access through networks
- B. Apply strong cryptography and security protocols to safeguard sensitive cardholder data.
- C. Apply strong encryption for transmission of cardholder data across public networks.
- D. Protect all user systems against malware and frequently update antivirus software
- E. Maintain a policy that addresses information security for employees and third parties.

Answer: CE

NEW QUESTION 185

A service provider hires you to design its new managed CE offering to meet these requirements

- The CEs cannot run a routing protocol with the PE
- Provide the ability for equal or unequal ingress load balancing in dual-homed CE scenarios.
- Provide support for IPv6 customer routes
- Scale up to 250.000 CE devices per customer.
- Provide low operational management to scale customer growth.
- Utilize low-end (inexpensive) routing platforms for CE functionality. Which tunneling technology do you recommend?

- A. FlexVPN
- B. point-to-point GRE
- C. DMVPN
- D. LISP

Answer: D

NEW QUESTION 190

You have been tasked with designing a data center interconnect as part of business continuity You want to use FCoE over this DCI to support synchronous replication. Which two technologies allow for FCoE via lossless Ethernet or data center bridging? (Choose two.)

- A. DWDM
- B. EoMPLS
- C. SONET/SDH
- D. Multichassis EtherChannel over Pseudowire
- E. VPLS

Answer: AC

NEW QUESTION 193

Company XYZ has a multicast domain that spans across multiple autonomous systems. The company wants to choose a technology that provides simplified and

controlled approach to interconnecting the multicast domains. Which technology is the best fit for this purpose?

- A. MSDP
- B. PIM SSM
- C. MPLS
- D. PIM sparse mode

Answer: A

NEW QUESTION 195

A network architect in an enterprise is designing a network policy for certain database applications. The goal of the policy is to allow these applications to access the internet directly, whereas other user and network applications that communicate with systems or users outside their own network must be routed through the data center. The focus is on achieving higher availability and a better user experience for the database applications, but switching between different network paths based on performance characteristics must be supported.

Which solution meets these requirements?

- A. MPLS L3VPN with QoS
- B. Cloud onRamp for IaaS
- C. Cloud onRamp for SaaS
- D. MPLS direct connect

Answer: C

Explanation:

<https://www.cisco.com/c/en/us/solutions/collateral/enterprise-networks/sd-wan/nb-06-cloud-onramp-saas-faq-ct>

NEW QUESTION 199

Your network operations team is deploying Access Control Lists (ACLs) across your Internet gateways. They wish to place an ACL inbound on the Internet gateway interface facing the core network (the "trusted" interface). Which IP address would the ACL need for traffic sourced from the inside interface, to match the source address of the traffic?

- A. inside global
- B. outside global
- C. inside local
- D. outside local

Answer: C

NEW QUESTION 201

Two routers R1 and R2 are directly connected through an Ethernet link. Both routers are running OSPF over the Ethernet link and OSPF has been registered with BFD. R1 has been set up to transmit BFD at a 50 ms interval, but R2 can receive only at a 100 ms rate due to platform limitations. What does this mean?

- A. After the initial timer exchange
- B. R2 sets its transmission rate to the R1 Desired Min TX interval
- C. After the initial timer exchange
- D. R1 sets its transmission rate to the R2 Required Min RX interval
- E. Timers renegotiate indefinitely, so the timer exchange phase never converges
- F. R2 sets the P-bit on all BFD control packets until R2 sends a packet with the F-bit set

Answer: B

NEW QUESTION 203

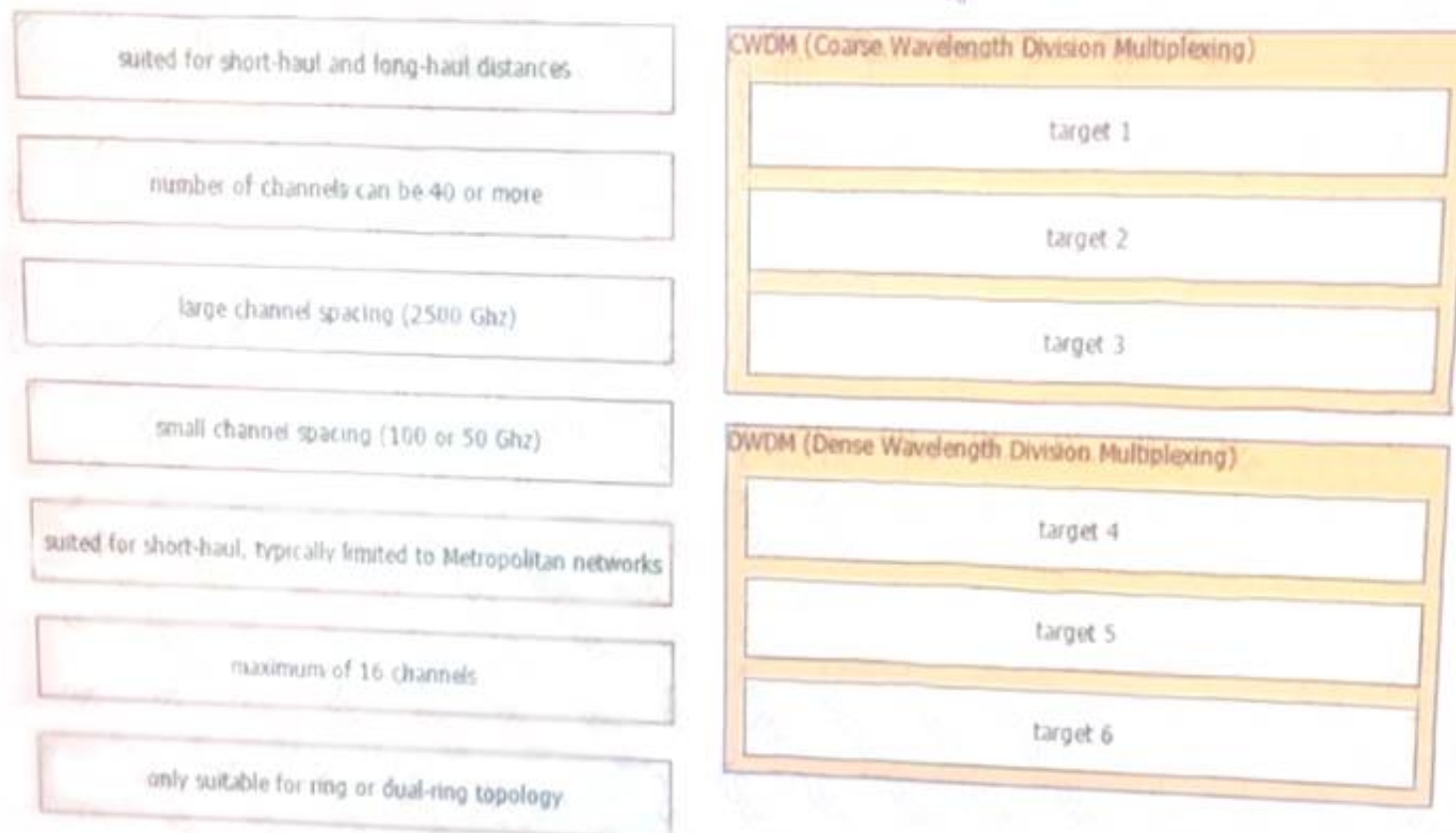
Which parameter is the most important factor to consider when deciding service placement in a cloud solution?

- A. data replication cost
- B. application structure
- C. security framework Implementation time
- D. data confidentiality rules

Answer: D

NEW QUESTION 207

Drag and drop the optical technology design characteristics on the left to the correct optical technologies on the right. Not all options are used



- A. Mastered
- B. Not Mastered

Answer: A

Explanation:

- 1 - target 4
- 2 - target 5
- 3 - target 1
- 4 - target 6
- 5 - target 2
- 6 - target 3

NEW QUESTION 210

Which technology is an open-source infrastructure automation tool that automates repetitive tasks for users who work in networks such as cloud provisioning and intraservice orchestration?

- A. Ansible
- B. Contrail
- C. Java
- D. Jinja2

Answer: A

NEW QUESTION 211

Company ABC wants to minimize the risk of users plugging unauthorized switches and hubs into the network. Which two features can be used on the LAN access ports to support this design requirement? (Choose two.)

- A. Loop Guard
- B. PortFast
- C. DTF
- D. Root Guard
- E. BPDU Guard

Answer: BE

NEW QUESTION 215

Which network management framework can be used to develop a network architecture that contains business requirements analysis, gap analysis, and network diagrams as artifacts to be used for design and implementation later?

- A. TOG
- B. ITIL
- C. FCAPS
- D. Cobit

Answer: C

NEW QUESTION 219

How must the queue sizes be designed to ensure that an application functions correctly?

- A. Each individual device queuing delay in the chain must be less than or equal to the application required delay.
- B. The queuing delay on every device in the chain must be exactly the same to the application required delay.

- C. The default queue sizes are good for any deployment as it compensates the serialization delay.
- D. The sum of the queuing delay of all devices plus serialization delay in the chain must be less than or equal to the application required delay.

Answer: D

NEW QUESTION 224

You are designing the routing design for two merging companies that have overlapping IP address space. Which of these must you consider when developing the routing and NAT design?

- A. Local to global NAT translation is done after routing
- B. Global to local NAT translation is done before routing.
- C. Local to global NAT translation is done before policy-based routing
- D. Global to local NAT translation is done after policy-based routing.

Answer: B

NEW QUESTION 229

An enterprise network has two core routers that connect to 200 distribution routers and uses full-mesh IBGP peering between these routers as its routing method. The distribution routers are experiencing high CPU utilization due to the BGP process. Which design solution is the most cost effective?

- A. Implement route reflectors on the two core routers
- B. Increase the memory on the core routers
- C. Implement e BGP between the core and distribution routers
- D. Increase the memory on the distribution routers
- E. Increase bandwidth between the core routers

Answer: A

NEW QUESTION 233

Customer XYZ network consists of an MPLS core. IS-IS running as IGP a pair of BGP route reflectors for route propagation, and a few dozens of MPLS-TE tunnels for specific tactical traffic engineering requirements. The customer's engineering department has some questions about the use of the Overload Bit in the IS-IS networks and how it could be used to improve their current network design. Which two concepts about the Overload Bit are true? (Choose two.)

- A. It can be set on a router during the startup process for a fixed period of time
- B. Networks advertised within the LSPs of the respective node will become unreachable
- C. It forces the midpoint MPLS-TE node to reoptimize the primary tunnels going through the OL node.
- D. It can be set on a router until other interacting protocols have signaled convergence.
- E. It is not recommended on BGP Route Reflectors

Answer: AD

NEW QUESTION 237

Which two types of planning approaches are used to develop business-driven network designs and to facilitate the design decisions? (Choose two)

- A. cost optimization approach
- B. strategic planning approach
- C. modular approach
- D. tactical planning approach
- E. business optimization approach

Answer: BD

NEW QUESTION 241

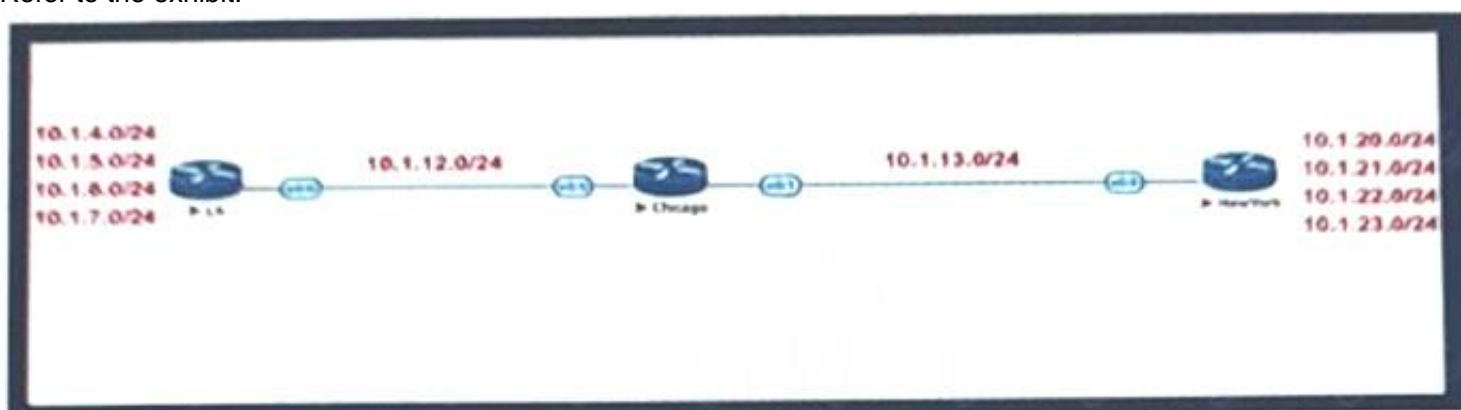
According to the CIA triad principles for network security design, which principle should be priority for a Zero Trust network?

- A. requirement for data-in-motion encryption and 2FA authentication
- B. requirement for data-at-rest encryption foe user identification within the VPN termination hardware
- C. categorization of systems, data, and enterprise BYOD assets that are connected to network zones based on individual privacy needs
- D. ensuring that authorized users have high-availability system access from defined zones to defined systems or zones

Answer: A

NEW QUESTION 244

Refer to the exhibit.



Company XYZ BGP topology is as shown in the diagram. The interface on the LA router connected toward the 10.1.5.0/24 network is faulty and is going up and down, which affects the entire routing domain. Which routing technique can the network administrator use so that the rest of the network is not affected by the flapping issue?

- A. The LA administrator should use route aggregation to summarize the 10.1.4.0/24, 10.1.5.0/24, 10.1.6.0/24, and 10.1.7.0/24 networks toward Chicago
- B. The LA administrator should use route dampening for the 10.1.5.0/24 network so that it does not get propagated when it flaps up and down.
- C. The LA administrator should use route filtering to block the 10.1.5.0/24 network from getting propagated toward Chicago and New York.
- D. The Chicago administrator should use route filtering to block the 10.1.5.0/24 network from coming in from the LA router.

Answer: B

NEW QUESTION 246

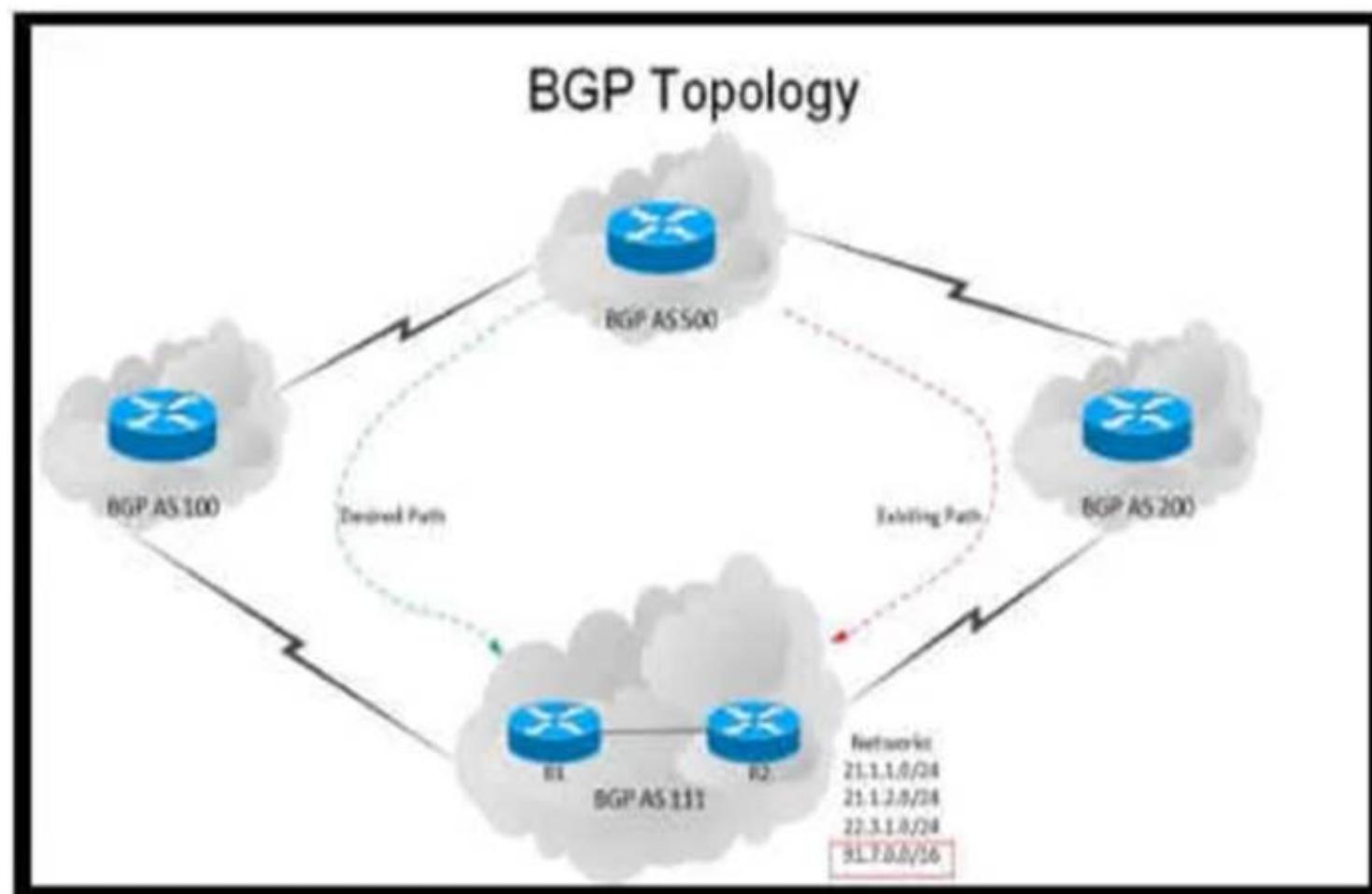
A legacy enterprise is using a Service Provider MPLS network to connect its head office and branches. Recently, they added a new branch to their network. Due to physical security concerns, they want to extend their existing IP CCTV network of the head office to the new branch, without any routing changes in the network. They are also under some time constraints. What is the best approach to extend the existing IP CCTV network to the new branch, without incurring any IP address changes?

- A. L2TPv3
- B. VXLAN
- C. EoMPLS

Answer: B

NEW QUESTION 247

Refer to the exhibit.



An engineer has been asked to redesign the traffic flow toward AS 111 coming from AS 500. Traffic destined to AS 111 network 91.7.0.0/16 should come in via AS 100, while traffic destined to all other networks in AS 111 should continue to use the existing path. Which BGP attributes are best suited to control this inbound traffic coming from BGP AS 500 into the 91.7.0.0/16 network?

- A. Prepend AS path for the 91.7.0.0/16 network and set it for neighbor in AS 200.
- B. Use extended community for the 91.7.0.0/16 network, not advertising it to the bi-lateral peer.
- C. Use local preference on R1 for the networks that AS 500 advertises to AS 111.
- D. Set higher MED for neighbor in AS 100 to influence incoming traffic for the 91.7.0.0/16 network.

Answer: A

NEW QUESTION 251

Company XYZ needs advice in redesigning their legacy Layer 2 infrastructure. Which technology should be included in the design to minimize or avoid convergence delays due to STP or FHRP and provide a loop-free topology?

- A. Use switch clustering in the access layer.
- B. Use switch clustering in the core/distribution layer.
- C. Use spanning-tree PortFast.
- D. Use BFD.

Answer: B

NEW QUESTION 254

Company XYZ was not satisfied with the reconvergence time OSPF is taking. BFD was implemented to try to reduce the reconvergence time, but the network is still experiencing delays when having to reconverge. Which technology will improve the design?

- A. BFDecho
- B. Change the protocol to BGP
- C. Change the OSPF hello and dead intervals

Answer: B

NEW QUESTION 255

Drag and drop the multicast protocols from the left onto the current design situation on the right.

PIM-SM, SSM, BIDIR

PIM-DM, PIM-SM, SSM, BIDIR

IGMP

MSDP

MP-BGP

MLD

IPv4

host registration

router registration

intherdomain source discovery

IPv6

host registration

router registration

- A. Mastered
- B. Not Mastered

Answer: A

Explanation:

PIM-SM, SSM, BIDIR

PIM-DM, PIM-SM, SSM, BIDIR

IGMP

MSDP

MP-BGP

MLD

IPv4

IGMP

PIM-SM, SSM, BIDIR

MSDP

IPv6

MLD

PIM-DM, PIM-SM, SSM, BIDIR

NEW QUESTION 260

Company XYZ has two routing domains in their network, EIGRP and OSPF. The company wants to provide full reachability between the two domains by implementing redistribution on a router running both protocols. They need to design the redistribution in a way that the OSPF routers will see link costs added to external routes. How must the redistribution strategy be designed for this network?

- A. Redistribute using metric type 2 into OSPF.
- B. Redistribute using metric type 1 into OSPF.
- C. Redistribute using metric type 1 into EIGRP.
- D. Redistribute using metric type 2 into EIGRP.

Answer: B

Explanation:

[https://www.ciscopress.com/articles/article.asp?p=27573&seqNum=4#:~:text=Routes%20are%20redistributed%](https://www.ciscopress.com/articles/article.asp?p=27573&seqNum=4#:~:text=Routes%20are%20redistributed%20)

NEW QUESTION 261

An enterprise wants to provide low-cost delivery of network systems that can be scaled on business demand, followed by an initiative to reduce capital expenses for new IT equipment. Which technology meets these goals’?

- A. IaaS within a private cloud
- B. IaaS within an on-premises location
- C. PaaS within a public cloud
- D. SaaS within an on-premises location

Answer: C

NEW QUESTION 264

A customer asks you to perform a high level review of their upcoming WAN refresh for remote sites. The review is specially focused on their retail store operations consisting of 500+ locations connected via multipoint IPsec VPN solution. Which routing protocol would be valid but would also be the most restrictive for the expansion of this deployment model?

- A. EIGRP
- B. IS-IS
- C. OSPF
- D. BGP

Answer: B

NEW QUESTION 269

An enterprise solution team is performing an analysis of multilayer architecture and multicontroller SDN solutions for multisite deployments. The analysis focuses on the ability to run tasks on any controller via a standardized interface. Which requirement addresses this ability on a multicontroller platform?

- A. Deploy a root controller to gather a complete network-level view.
- B. Use the East-West API to facilitate replication between controllers within a cluster.
- C. Build direct physical connectivity between different controllers.
- D. Use OpenFlow to implement and adapt new protocols.

Answer: D

NEW QUESTION 272

Which two features control multicast traffic in a VLAN environment? (Choose two)

- A. IGMP snooping
- B. MLD snooping
- C. RGMP
- D. PIM snooping
- E. pruning

Answer: AB

NEW QUESTION 277

Drag and drop the characteristics from the left onto the corresponding network management options on the right.

protocol based on HTTP for configuring data defined in YANG and supports operations such as GET, PUT, POST, PATCH, and DELETE	NETCONF
provides mechanisms to install, manipulate, and delete the configuration of network devices; uses XML for data encoding and the operation is realized as RPC	RESTCONF
application program interface that uses HTTP requests to GET, PUT, POST, and DELETE data	ANSIBLE
open-source software provisioning, configuration management, and application-deployment tool	YANG
data modeling language used to model configuration data, state data, remote procedure calls, and notifications for network management protocols	REST API

- A. Mastered
- B. Not Mastered

Answer: A

Explanation:

Text Description automatically generated

NEW QUESTION 279

Company XYZ has a hub-and-spoke topology over an SP-managed infrastructure. To measure traffic performance metrics, they implemented IP SLA senders on all spoke CE routers and an IP SLA responder on the hub CE router. What must they monitor to have visibility on the potential performance impact due to the constantly increasing number of spoke sites?

- A. CPU and memory usage on the spoke routers
- B. memory usage on the hub router
- C. CPU usage on the hub router

D. interface buffers on the hub and spoke routers

Answer: C

NEW QUESTION 283

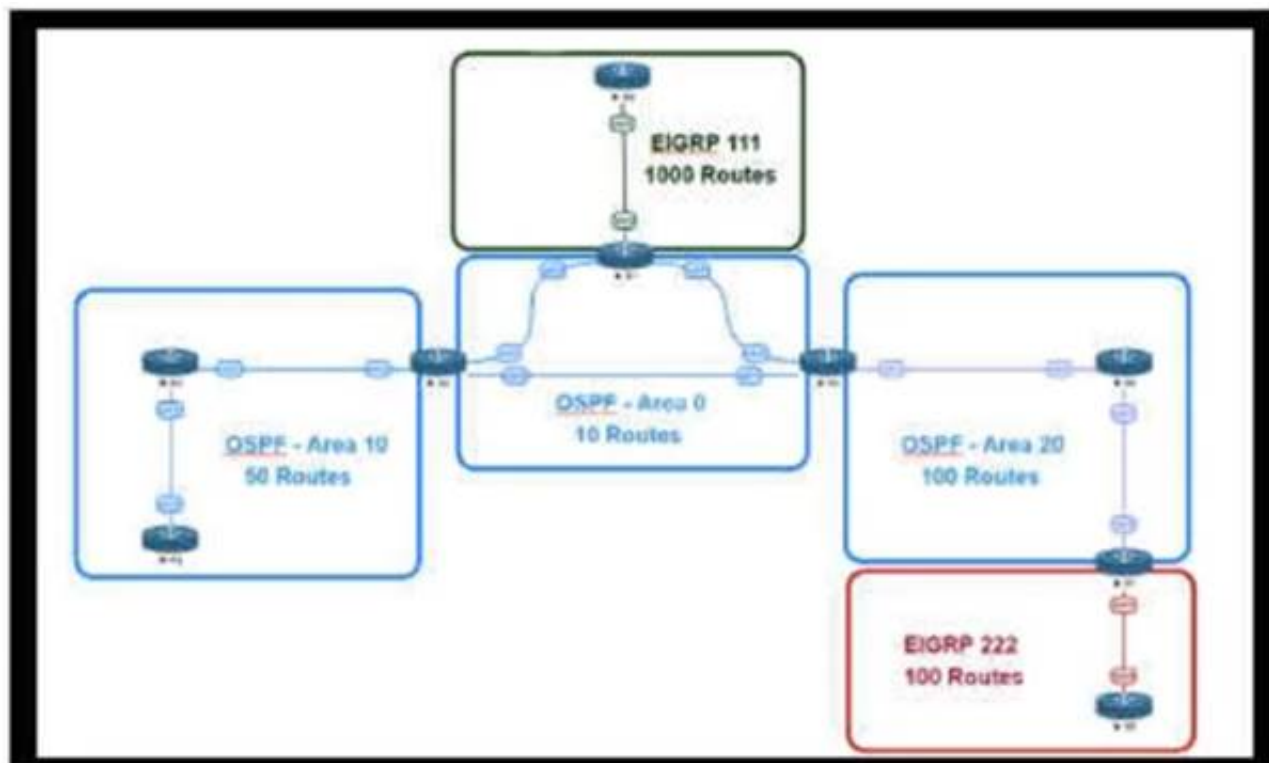
SD-WAN can be used to provide secure connectivity to remote offices, branch offices, campus networks, data centers, and the cloud over any type of IP-based underlay transport network. Which two statements describe SD WAN solutions? (Choose two.)

- A. SD-WAN networks are inherently protected against slow performance.
- B. Control and data forwarding planes are kept separate.
- C. Improved operational efficiencies result in cost savings.
- D. Solutions include centralized orchestration, control, and zero-touch provisioning.
- E. Solutions allow for variations of commodity and specialized switching hardware.

Answer: BD

NEW QUESTION 285

Refer to the exhibit.



An engineer is designing a multiarea OSPF network for a client who also has a large EIGRP domain. EIGRP routes are getting redistributed into OSPF. OSPF area 20 has routers with limited memory and CPU resources. The engineer wants to block routes from EIGRP 111 from propagating into area 20 and allow EIGRP 222 routes to. How in which OSPF area type fulfills this design requirement?

- A. area 20 as a stub area
- B. type 5 LSA filtering on the ASBR between EIGRP 111 and area 0
- C. area 20 as a NSSA area
- D. type 3 LSA filtering on the ABR between area 0 and area 20

Answer: C

NEW QUESTION 287

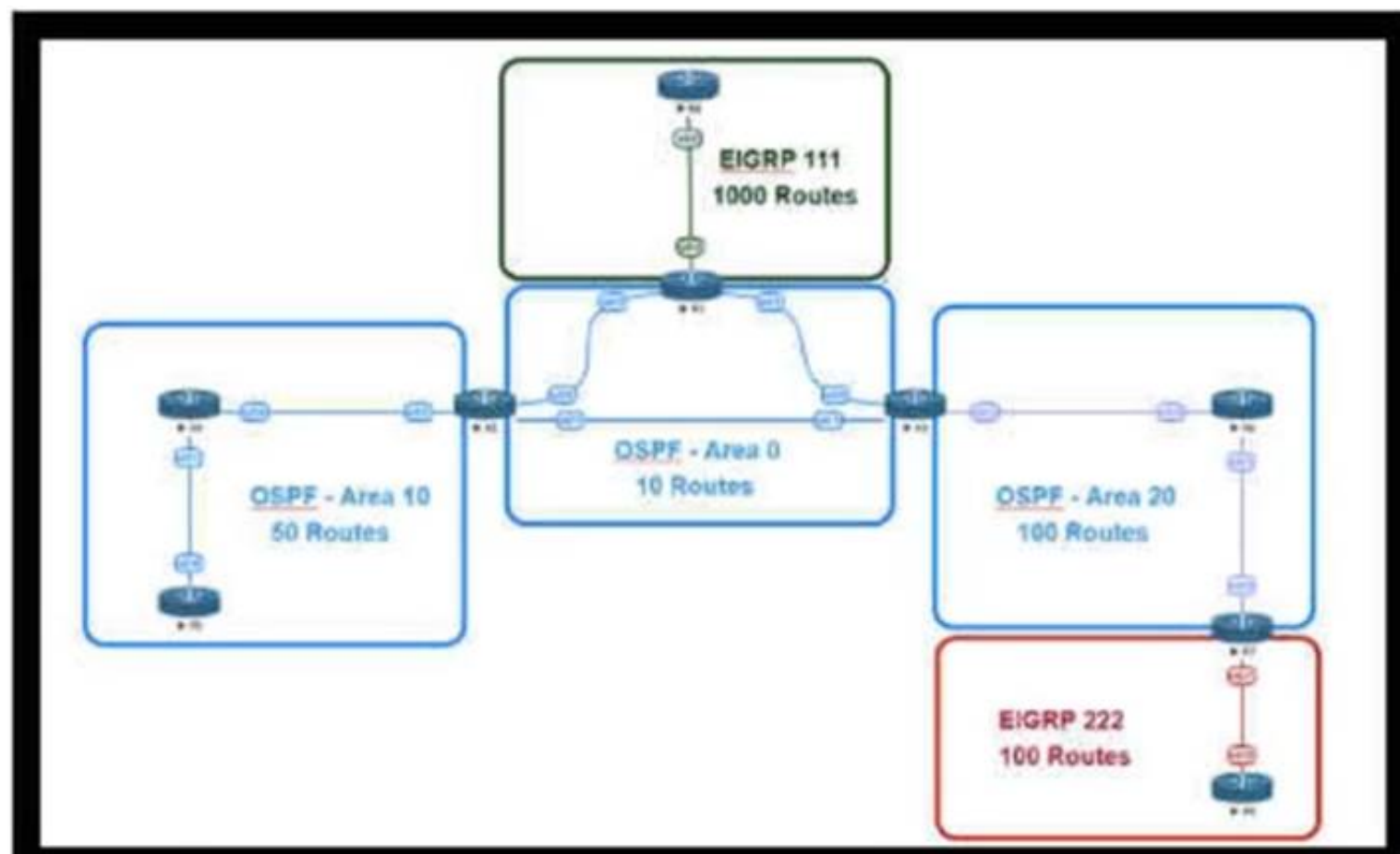
Which three tools are used for ongoing monitoring and maintenance of a voice and video environment? (Choose three.)

- A. flow-based analysis to measure bandwidth mix of applications and their flows
- B. call management analysis to identify network convergence-related failures
- C. call management analysis to identify CAC failures and call quality issues
- D. active monitoring via synthetic probes to measure loss, latency, and jitter
- E. passive monitoring via synthetic probes to measure loss, latency, and jitter
- F. flow-based analysis with PTP time-stamping to measure loss, latency, and jitter

Answer: ACD

NEW QUESTION 292

Refer to the exhibit.



This network is running OSPF and EIGRP as the routing protocols. Mutual redistribution of the routing protocols has been configured on the appropriate ASBRs. The OSPF network must be designed so that flapping routes in EIGRP domains do not affect the SPF runs within OSPF. The design solution must not affect the way EIGRP routes are propagated into the EIGRP domains. Which technique accomplishes the requirement?

- A. route summarization on the ASBR interfaces facing the OSPF domain
- B. route summarization on the appropriate ASBRs.
- C. route summarization on the appropriate ABRS.
- D. route summarization on EIGRP routers connecting toward the ASBR

Answer: B

NEW QUESTION 296

Which two points must network designers consider when designing a new network design or when evaluating an existing network design to help them understand the high-level design direction with regards to the security aspects? (Choose two)

- A. Consider Business objectives and goals
- B. Consider organization's security policy standards
- C. Consider for only multi-site networks
- D. Consider for only new network technologies and components

Answer: AB

NEW QUESTION 297

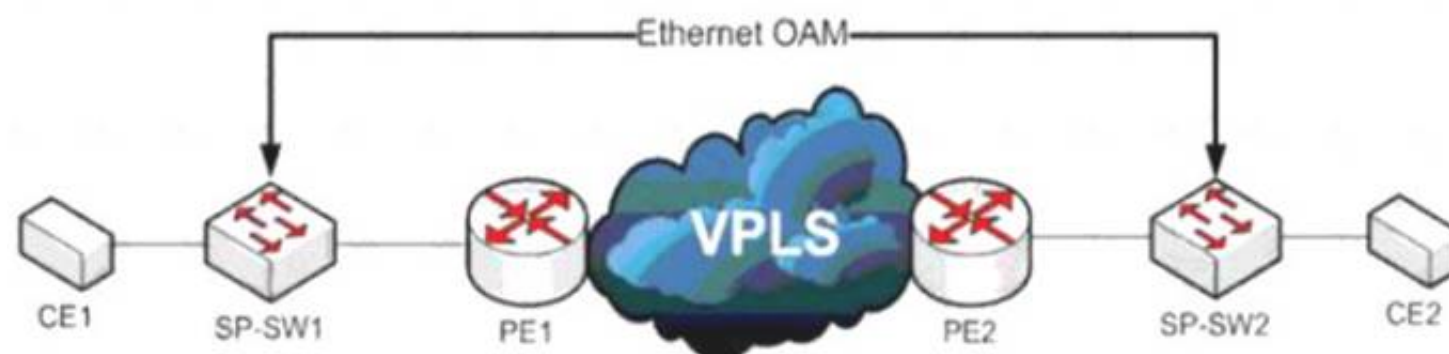
Which two foundational aspects of IoT are still evolving and being worked on by the industry at large? (Choose two)

- A. WiFi protocols
- B. Regulatory domains
- C. Low energy Bluetooth sensors
- D. IoT consortia
- E. Standards

Answer: AC

NEW QUESTION 300

Refer to the exhibit



A service provider has a requirement to use Ethernet OAM to detect end-to-end connectivity failures between SP-SW1 and SP-SW2. Which two ways to design this solution are true? (Choose two)

- A. Enable unicast heartbeat messages to be periodically exchanged between MEPs
- B. Enable Connectivity Fault Management on the SP switches
- C. Use upward maintenance endpoints on the SP switches
- D. Forward E-LMI PDUs over VPLS

E. Forward LLD PDUs over the VPLS

Answer: BC

NEW QUESTION 304

Which two advantages of using DWDM over traditional optical networks are true? (Choose two.)

- A. inherent topology flexibility and service protection provided without penalty through intelligent oversubscription of bandwidth reservation
- B. ability to expand bandwidth over existing optical Infrastructure
- C. inherent topology flexibility with built-in service protection
- D. inherent topology flexibility with intelligent chromatic dispersion
- E. inherent topology flexibility with a service protection provided through a direct integration with an upper layer protocol

Answer: BC

NEW QUESTION 307

Which design consideration is valid when you contrast fabricPath and trill?

- A. FabricPath uses IS-IS, but TRILL uses VxLAN
- B. FabricPath permits active-active FHRP and TRILL support anycast gateway.
- C. FabricPath Permits ECMP, but TRILL does not
- D. FabricPath permits active-active mode, but TRILL supports only active-standby mode.

Answer: B

NEW QUESTION 309

The Company XYZ network is experiencing attacks against their router. Which type of Control Plane Protection must be used on the router to protect all control plane IP traffic that is destined directly for one of the router interfaces?

- A. Control Plane Protection host subinterface
- B. Control Plane Protection main interface
- C. Control Plane Protection transit subinterface
- D. Control Plane Protection CEF-exception subinterface

Answer: A

NEW QUESTION 310

Company XYZ is designing the network for IPv6 security and they have these design requirements:

- A switch or router must deny access to traffic from sources with addresses that are correct, but are topologically incorrect
- Devices must block Neighbor Discovery Protocol resolution for destination addresses that are not found in the binding table.

Which two IPv4 security features are recommended for this company? (Choose two)

- A. IPv6 DHCP Guard
- B. IPv6 Source Guard
- C. IPv6 Destination Guard
- D. IPv6 Prefix Guard
- E. IPv6 RA Guard

Answer: CD

Explanation:

https://www.cisco.com/c/dam/global/ja_jp/td/docs/ios-xml/ios/ipv6_fhsec/configuration/xe-16/ip6f-xe-16-book.

NEW QUESTION 313

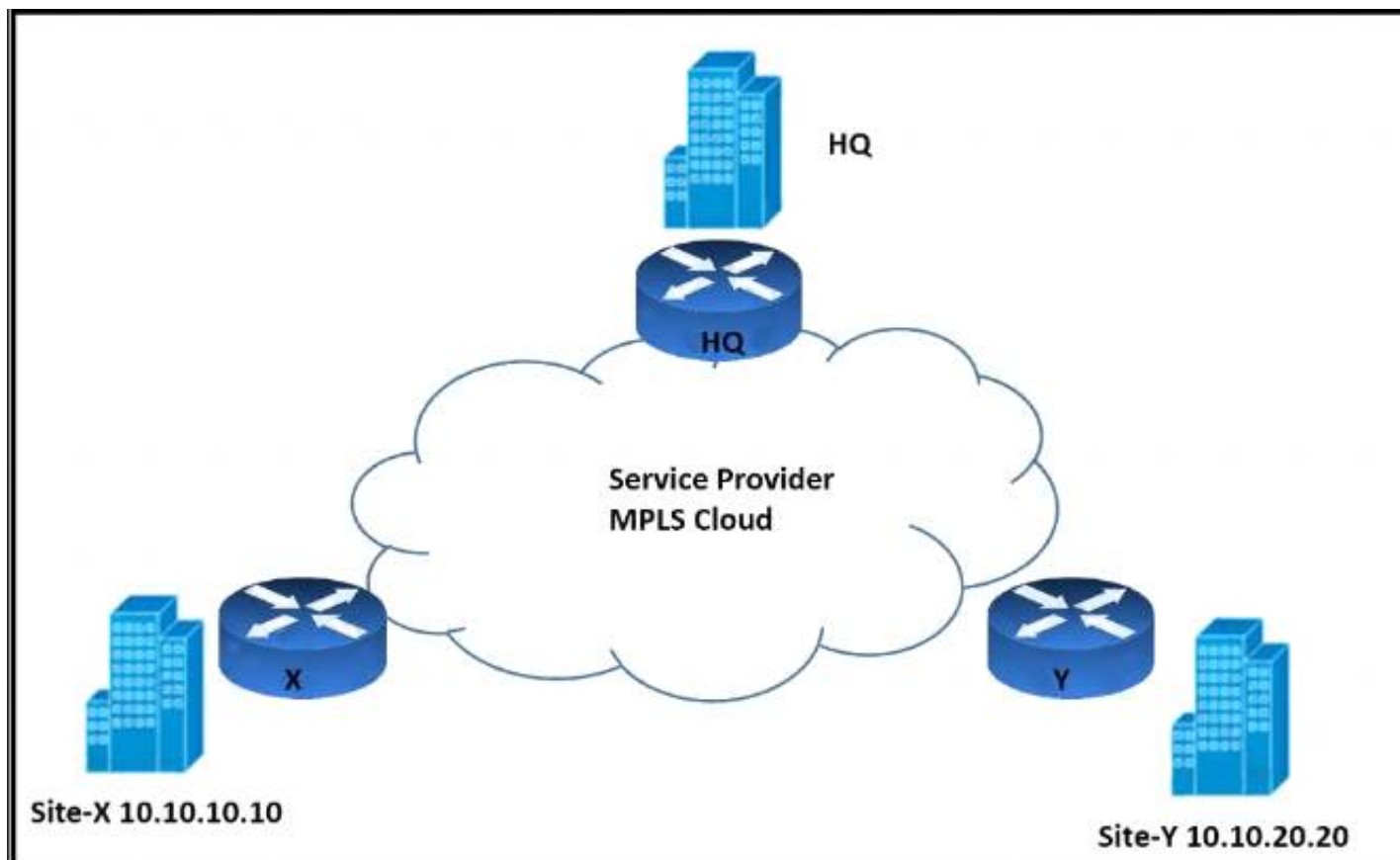
A green data center is being deployed and a design requirement is to be able to readily scale server virtualization Which IETF standard technology can provide this requirement?

- A. data center bridging
- B. unified fabric
- C. Transparent Interconnection of Lots of Links
- D. fabric path

Answer: C

NEW QUESTION 315

Refer to the exhibit.



An architect must design an enterprise WAN that connects the headquarters with 22 branch offices. The number of remote sites is expected to triple in the next three years. The final solution must comply with these requirements:

- Only the loopback address of each of the enterprise CE X and Y routers must be advertised to the interconnecting service provider cloud network.
- The transport layer must carry the VPNv4 label and VPN payload over the MP-BGP control plane.
- The transport layer must not be under service provider control.

Which enterprise WAN transport virtualization technique meets the requirements?

- A. EIGRP Over the Top
- B. MPLS over BGP over multipoint GRE
- C. DMVPN per VRF
- D. point-to-point GRE per VRF

Answer: B

NEW QUESTION 316

Company XYZ wants to deploy OSPF. The design plan requires that two OSPF networks be mutually redistributed at multiple locations and ensure end-to-end connectivity to all of the company's networks Which technology can be used to fulfill the requirements while avoiding the creation of routing loops?

- A. Create a virtual link between ASBRs.
- B. Change the router ID for both ASBRs.
- C. Redistribute routes as external type 2 routes.
- D. Use route maps on ASBRs to filter routes with tags so they are not redistributed.

Answer: D

Explanation:

<https://www.cisco.com/c/en/us/support/docs/ip/open-shortest-path-first-ospf/4170-ospfprocesses.html>

NEW QUESTION 320

Which two statements describe network automation and network orchestration? (Choose two.)

- A. Network automation does not provide governance or policy management.
- B. Network automation spans multiple network services, vendors, and environments.
- C. Network orchestration is done through programmatic REST APIs enabling automation across devices and management platforms.
- D. Provisioning network services is an example of network automation.
- E. Network orchestration is used to run single, low-level tasks without human intervention

Answer: AC

NEW QUESTION 325

A service provider recently migrated to an SD-WAN solution for delivering WAN connections to its customers. One of the main challenges with the SD-WAN deployment is that branch site volume increases every year, which causes management complexity. Which action resolves the issue?

- A. Implement a scalable network management system to manage all sites.
- B. Adopt a well-structured SD-WAN service management lifecycle model
- C. Build a service orchestration platform on top of the network controller
- D. Set up a dedicated team to monitor and provision new customers

Answer: C

NEW QUESTION 328

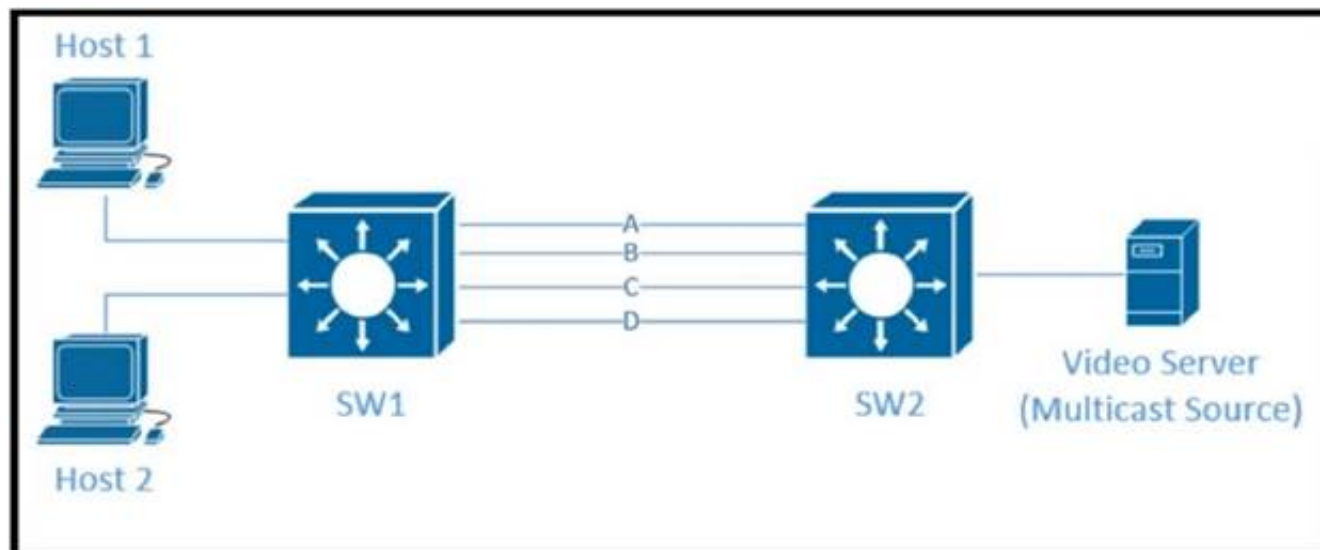
What advantage of placing the IS-IS layer 2 flooding domain boundary at the core Layer in a three-layer hierarchical network is true?

- A. The Layer 1 and Layer 2 domains can easily overlap
- B. It reduces the complexity of the Layer 1 domains
- C. It can be applied to any kind of topology
- D. The Layer 2 domain is contained and more stable

Answer: D

NEW QUESTION 333

Refer to the exhibit.



Traffic was equally balanced between Layer 3 links on core switches SW1 and SW2 before an introduction of the new video server in the network. This video server uses multicast to send video streams to hosts and now one of the links between core switches is over utilized Which design solution solves this issue?

- A. Add more links between core switches.
- B. Aggregate links Layer 2 link aggregation.
- C. Apply a more granular load- balancing method on SW1.
- D. Apply a more granular load-balancing method on SW2.
- E. Filter IGMP joins on an over -utilized link.

Answer: B

NEW QUESTION 338

Which main IoT migration aspect should be reviewed for a manufacturing plant?

- A. Sensors
- B. Security
- C. Applications
- D. Wi-Fi Infrastructure
- E. Ethernet Switches

Answer: A

NEW QUESTION 342

A BGP route reflector in the network is taking longer than expected to coverage during large network changes. Troubleshooting shows that the router cannot handle all the TCP acknowledgements during route updates. Which action can be performed to tune the device performance?

- A. Increase the size of the hold queue.
- B. Increase the size of the large buffers.
- C. Decrease the size of the small buffers.
- D. Increase the keepalive timers for each BGP neighbor.

Answer: A

NEW QUESTION 343

.....

Thank You for Trying Our Product

* 100% Pass or Money Back

All our products come with a 90-day Money Back Guarantee.

* One year free update

You can enjoy free update one year. 24x7 online support.

* Trusted by Millions

We currently serve more than 30,000,000 customers.

* Shop Securely

All transactions are protected by VeriSign!

100% Pass Your 400-007 Exam with Our Prep Materials Via below:

<https://www.certleader.com/400-007-dumps.html>