



Snowflake

Exam Questions SnowPro-Core

SnowPro Core Certification Exam

About ExamBible

[Your Partner of IT Exam](#)

Found in 1998

ExamBible is a company specialized on providing high quality IT exam practice study materials, especially Cisco CCNA, CCDA, CCNP, CCIE, Checkpoint CCSE, CompTIA A+, Network+ certification practice exams and so on. We guarantee that the candidates will not only pass any IT exam at the first attempt but also get profound understanding about the certificates they have got. There are so many alike companies in this industry, however, ExamBible has its unique advantages that other companies could not achieve.

Our Advances

* 99.9% Uptime

All examinations will be up to date.

* 24/7 Quality Support

We will provide service round the clock.

* 100% Pass Rate

Our guarantee that you will pass the exam.

* Unique Gurantee

If you do not pass the exam at the first time, we will not only arrange FULL REFUND for you, but also provide you another exam of your claim, ABSOLUTELY FREE!

NEW QUESTION 1

- (Exam Topic 1)

Select the three types of tables that exist within Snowflake. Choose 3 answers

- A. Temporary
- B. Transient
- C. Provisioned
- D. Permanent

Answer: ABD

Explanation:

Reference: <https://community.snowflake.com/s/article/Making-Transient-table-by-Default>

NEW QUESTION 2

- (Exam Topic 1)

True or False: When active, a pipe requires a dedicated Virtual Warehouse to execute.

- A. True
- B. False

Answer: B

NEW QUESTION 3

- (Exam Topic 1)

The FLATEEN function is used to query which type of data in Snowflake?

- A. Structured data
- B. Semi-structured data
- C. Both of the above
- D. None of the above

Answer: B

Explanation:

Reference: <https://docs.snowflake.com/en/user-guide/querying-semistructured.html>

FLATTEN is used to unnest semi-structured data. Don't see an application for structured data as by definition it shouldn't be nested.

NEW QUESTION 4

- (Exam Topic 1)

Which of the following best describes where Snowflake's metadata is stored?

- A. Within the data files
- B. Inside the Virtual Warehouses
- C. In the Cloud Services Layer
- D. within the drivers

Answer: C

NEW QUESTION 5

- (Exam Topic 1)

True or False: When a new Snowflake object is created, it is automatically owned by the user who created it.

- A. True
- B. False

Answer: A

Explanation:

Reference: <https://docs.snowflake.com/en/user-guide/security-access-control-overview.html>

NEW QUESTION 6

- (Exam Topic 1)

True or False: Micro-partition metadata enables some operations to be completed without requiring Compute.

- A. True
- B. False

Answer: A

Explanation:

Reference: <https://blog.ippon.tech/innovative-snowflake-features-caching/>

NEW QUESTION 7

- (Exam Topic 1)

Which of the following connectors allow Multi-Factor Authentication (MFA) authorization when connecting? (Choose all that apply.)

- A. JDBC
- B. SnowSQL
- C. Snowflake Web Interface (UI)
- D. ODBC
- E. PythonD18912E1457D5D1DDCBD40AB3BF70D5D

Answer: ABCDE

Explanation:

Reference: <https://docs.snowflake.com/en/user-guide/security-mfa.html>

NEW QUESTION 8

- (Exam Topic 1)

The Query History in the Snowflake Web Interface (UI) is kept for approximately:

- A. 60 minutes
- B. 24 hours
- C. 14 days
- D. 30 days
- E. 1 year

Answer: C

Explanation:

Reference: https://docs.snowflake.com/en/sql-reference/account-usage/query_history.html

NEW QUESTION 9

- (Exam Topic 1)

Which of the following statement is true of Snowflake? Select one.

- A. It was built specifically for the cloud
- B. it was built as an on-premises solution and then potted to the cloud
- C. It was designed as a hybrid database to allow customers to store data either on premises or in the cloud
- D. It was built for Hadoop architecture
- E. It's based on an Oracle Architecture

Answer: A

NEW QUESTION 10

- (Exam Topic 1)

True or False: A customer using SnowSQL / native connectors will be unable be unable to able to also use the Snowflake Web interface (UI) unless access to the UI is explicitly granted by supported.

- A. True
- B. False

Answer: B

Explanation:

Reference: <https://docs.snowflake.com/en/user-guide/connecting.html>

NEW QUESTION 10

- (Exam Topic 1)

When loading data into Snowflake, the COPY command supports: Choose 2 answers

- A. Joins
- B. Fitters
- C. Data type conversions
- D. Column reordering
- E. Aggregates

Answer: CD

NEW QUESTION 15

- (Exam Topic 1)

Which object allows you to limit the number of credits consumed within a Snowflake account? Select one.

- A. Account usage Tracking
- B. Resource Monitor
- C. Warehouse Limit Parameter
- D. Credit Consumption Tracker

Answer: B

Explanation:

The time travel data retention can be overwritten at the table level "When creating a table, schema, or database, the account default can be overridden using the DATA_RETENTION_TIME_IN_DAYS parameter in the command."

NEW QUESTION 17

- (Exam Topic 1)

True or False: Some queries can be answered through the metadata cache and do not require an active Virtual Warehouse.

- A. True
- B. False

Answer: A

Explanation:

Some aggregate queries are answered thru micro partitions metadata only not requiring any VW spin ups.

NEW QUESTION 22

- (Exam Topic 1)

Which of the following objects is not covered by Time Travel?

- A. Tables
- B. Schemas
- C. Databases
- D. Stages

Answer: D

Explanation:

Reference: <https://docs.snowflake.com/en/user-guide/data-time-travel.html>

NEW QUESTION 27

- (Exam Topic 1)

Which of the following are examples of operations that require a Virtual Warehouse to complete, assuming no queries have been executed previously?
Choose 3 answers

- A. MIN(< < column value>>)
- B. COPY
- C. SUM(<< column value >>)
- D. UPDATE

Answer: BCD

NEW QUESTION 32

- (Exam Topic 1)

What is the lowest Snowflake edition that offers Time Travel up to 90 days?

- A. standard Edition
- B. Premier Edition
- C. Enterprise Edition
- D. Business Critical Edition

Answer: C

Explanation:

Reference: <https://docs.snowflake.com/en/user-guide/data-availability.html>

NEW QUESTION 35

- (Exam Topic 1)

A role is created and owns 2 tables. This role is then dropped. Who will now own the two tables?

- A. The tables are now orphaned
- B. The user that deleted the role
- C. SYSADMIN
- D. The assumed role that dropped the role

Answer: D

Explanation:

Reference: <https://docs.snowflake.com/en/sql-reference/sql/drop-role.html>

NEW QUESTION 40

- (Exam Topic 1)

True or False: Users are able to see the result sets of queries executed by other users that share their same role.

- A. True
- B. False

Answer: B

Explanation:

Reference: <https://docs.snowflake.com/en/user-guide/security-access-control-considerations.html>

NEW QUESTION 43

- (Exam Topic 1)

Snowflake provides a mechanism for its customers to override its clustering algorithms. This method is:

- A. Micro-partitions
- B. Clustering keys
- C. Key partitions
- D. Clustered partitions

Answer: B

Explanation:

Reference: <https://community.snowflake.com/s/article/Snowflake-What-the-Cluster>

NEW QUESTION 48

- (Exam Topic 1)

If a Small Warehouse is made up of 2 servers/cluster, how many servers/cluster make up a Medium Warehouse?

- A. 4
- B. 16
- C. 32
- D. 128

Answer: A

Explanation:

Reference: <https://docs.snowflake.com/en/user-guide/warehouses-overview.html>

NEW QUESTION 51

- (Exam Topic 1)

Which is true of Snowflake network policies? A Snowflake network policy: (Choose two.)

- A. Is available to all Snowflake Editions
- B. Is only available to customers with Business Critical Edition
- C. Restricts or enables access to specific IP addresses
- D. Is activated using an “ALTER DATABASE” command

Answer: AC

Explanation:

Reference: <https://docs.snowflake.com/en/sql-reference/sql/create-network-policy.html>

NEW QUESTION 53

- (Exam Topic 1)

True or False: It is possible to load data into Snowflake without creating a named File Format object.

- A. True
- B. False

Answer: A

Explanation:

Reference: <https://docs.snowflake.com/en/user-guide/data-load-external-tutorial-create-file-format.html>

NEW QUESTION 58

- (Exam Topic 1)

When scaling up Virtual Warehouse by increasing Virtual Warehouse t-shirt size, you are primarily scaling for improved: Select one.

- A. Concurrency
- B. Performance

Answer: B

Explanation:

Reference:

<https://docs.snowflake.com/en/user-guide/warehouses-considerations.html#warehouse-resizing-improves-perfor>

NEW QUESTION 62

- (Exam Topic 1)

Which of the following statements are true of Snowflake releases: (Choose two.)

- A. They happen approximately weekly
- B. They roll up and release approximately monthly, but customers can request early release application
- C. During a release, new customer requests/queries/connections transparently move over to the newer version
- D. A customer is assigned a 30 minute window (that can be moved anytime within a week) during which the system will be unavailable and customer is upgraded

Answer: AC

Explanation:

<https://docs.snowflake.com/en/user-guide/intro-releases.html>

NEW QUESTION 67

- (Exam Topic 1)

Which of the following commands sets the Virtual Warehouse for a session?

- A. COPT WAREHOUSE FROM <<Config file> ;
- B. SET warehouse = <<warehouse name>>;
- C. USE WAREHOUSE <<warehouse name>>;
- D. USE VIRTUAL_WAREHOUSE <<warehouse name>>;

Answer: C

Explanation:

Reference: <https://docs.snowflake.com/en/user-guide/warehouses-tasks.html>

NEW QUESTION 68

- (Exam Topic 1)

True or False: Bulk unloading of data from Snowflake supports the use of a SELECT statement.

- A. True
- B. False

Answer: A

Explanation:

Reference: <https://docs.snowflake.com/en/user-guide-data-unload.html>

NEW QUESTION 69

- (Exam Topic 1)

True or False: Snowflake allows its customers to directly access the micro-partition files that make up its tables.

- A. True
- B. False

Answer: B

NEW QUESTION 70

- (Exam Topic 1)

True or False: Reader Accounts incur no additional Compute costs to the Data Provider since they are simply reading the shared data without making changes.

- A. True
- B. False

Answer: B

Explanation:

Reference: <https://interworks.com/blog/bdu/2020/02/05/zero-to-snowflake-secure-data-sharing/>

NEW QUESTION 74

- (Exam Topic 1)

True or False: Snowflake supports federated authentication in all editions.

- A. True
- B. False

Answer: A

Explanation:

Reference:

<https://community.snowflake.com/s/news/federated-authentication-sso-now-available-in-all-snowflake-editions>

NEW QUESTION 75

- (Exam Topic 1)

Which of the following languages can be used to implement Snowflake User Defined Functions (UDFs)? Choose 2 answers

- A. Java
- B. JavaScript

- C. SQL
- D. Python

Answer: BC

Explanation:

Reference: <https://docs.snowflake.com/en/sql-reference/user-defined-functions.html>

NEW QUESTION 76

- (Exam Topic 1)

When a Pipe is recreated using the CREATE OR REPLACE PIPE command:

- A. The Pipe load history is reset to empty
- B. The REFRESH parameter is set to TRUE
- C. Previously loaded files will be ignored
- D. All of the above

Answer: A

Explanation:

<https://docs.snowflake.com/en/user-guide/data-load-snowpipe-manage.html#load-history> "When a pipe is recreated, the load history is dropped."

NEW QUESTION 81

- (Exam Topic 1)

Increasing the size of a Virtual Warehouse from an X-Small to an X-Large is an example of:

- A. Scaling rhythmically
- B. Scaling max
- C. Scaling out
- D. Scaling up

Answer: D

NEW QUESTION 82

- (Exam Topic 1)

If auto-suspend is enable for a Virtual Warehouse, he Warehouse is automatically suspended when:

- A. All Snowflake sessions using the warehouse are terminated.
- B. The last query using the warehouse completes.
- C. There are no users loaned into Snowflake.
- D. The Warehouse is inactive for a specified period of time.

Answer: D

Explanation:

Reference: <https://docs.snowflake.com/en/user-guide/warehouses-overview.html>

NEW QUESTION 85

- (Exam Topic 1)

Increasing the maximum number of clusters in a Multi-Cluster Warehouse is an example of:

- A. Scaling rhythmically
- B. Scaling max
- C. Scaling out
- D. Scaling Up

Answer: C

Explanation:

<https://docs.snowflake.com/en/user-guide/warehouses-considerations.html#scaling-up-vs-scaling-out>
"Scale out by adding warehouses to a multi-cluster warehouse"

NEW QUESTION 89

- (Exam Topic 1)

What parameter controls if the Virtual warehouse starts immediately after the CREATE WAREHOUSE statement? Select one.

- A. INITIALLY_SUSPENDED = TRUE/FALSE
- B. START_AFTCR_CREATE = TRUE/FALSE
- C. START_TTIME = 60 // (seconds from now)
- D. START.TIME = CURRENT.DATE()

Answer: A

NEW QUESTION 94

- (Exam Topic 1)

In which layer of its architecture does Snowflake store its metadata statistics? Select one.

- A. Storage Layer
- B. Compute Layer
- C. Database Layer
- D. Cloud Service Layer

Answer: D

Explanation:

Reference: <https://hevodata.com/blog/snowflake-architecture-cloud-data-warehouse/>

NEW QUESTION 97

- (Exam Topic 1)

When creating a user it is advisable to:

Choose 2 answers

- A. Set the user to be initially disabled
- B. Force an immediate password change
- C. Set a default role for the user
- D. Set the number of minutes to unlock to 15 minutes
- E. Set the users access to expire within a specified timeframe

Answer: BC

NEW QUESTION 99

- (Exam Topic 1)

True or False: When you create a custom role, it is a practice to immediately grant that role to ACCOUNTADMIN.

- A. True
- B. False

Answer: B

NEW QUESTION 104

- (Exam Topic 1)

Which of the following statements describes a benefit of Snowflake's separation of compute and storage?

(Choose all that apply.)

- A. Growth of storage and compute are tightly coupled together
- B. Storage expands without the requirement to add more compute
- C. Compute can be scaled up or down without the requirement to add more storage
- D. Multiple compute clusters can access stored data without contention

Answer: BCD

Explanation:

Reference:

<https://towardsdatascience.com/why-you-are-throwing-money-away-if-your-cloud-data-warehouse-doesnt-separate-storage-and-compute-65d2dffd450f>

NEW QUESTION 105

- (Exam Topic 1)

Each incremental increase in Virtual Warehouse size (e.g. Medium to Large) generally results in what? Select one.

- A. More micro-partitions
- B. Better query scheduling
- C. Double the numbers of servers in the compute cluster
- D. Higher storage costs

Answer: C

NEW QUESTION 109

- (Exam Topic 1)

Which of the following items does the Cloud services Layer manage? Choose 4 answers

- A. user authentication
- B. Metadata
- C. Query compilation and optimization
- D. external blob storage
- E. Data security

Answer: ABCE

NEW QUESTION 110

- (Exam Topic 1)

True or False the longer the data retention period, the higher the resulting storage costs.

- A. True
- B. False

Answer: A

NEW QUESTION 113

- (Exam Topic 1)

The number of queries that a Virtual Warehouse can concurrently process is determined by: Choose 2 answers

- A. The complexity of each query
- B. The CONCURRENT_QUERY_UMIT parameter set on the Snowflake account
- C. The size of the data required for each query
- D. The tool that s executing the query

Answer: AC

Explanation:

Reference: <https://docs.snowflake.com/en/user-guide/warehouses-overview.html>

NEW QUESTION 115

- (Exam Topic 1)

What privileges are required to execute a task?

- A. To execute a task, you need the EXECUTE TASK.
- B. A task is an account-level object and can only be executed by the Account Admin role.
- C. Tasks run automatically and do run under any role.
- D. Tasks are stored in a special database called the utility database and require EXECUTE TASK privilege in the utility database.

Answer: A

NEW QUESTION 117

- (Exam Topic 1)

Query results are stored in the Result Cache for how long after they are last accessed, assuming no data changes have occurred? Select one.

- A. 1 Hour
- B. 3 Hours
- C. 12 hours
- D. 24 hours

Answer: D

Explanation:

Reference: <https://community.snowflake.com/s/article/Caching-in-Snowflake-Data-Warehouse>

NEW QUESTION 120

- (Exam Topic 1)

True or False: A Virtual Warehouse consumes Snowflake credits even when inactive.

- A. True
- B. False

Answer: B

Explanation:

Reference: <https://docs.snowflake.com/en/user-guide/warehouses-multicloud.html>

NEW QUESTION 122

- (Exam Topic 1)

What are the three things customers want most from their enterprise data warehouse solution? Choose 3 answers

- A. On-premise availability
- B. Simplicity
- C. Open source based
- D. Concurrency
- E. Performance

Answer: BDE

NEW QUESTION 127

- (Exam Topic 1)

Which of the following statements are true of Virtual Warehouses? (Choose all that apply.)

- A. Customers can change the size of the Warehouse after creation
- B. A Warehouse can be resized while running
- C. A Warehouse can be configured to suspend after a period of inactivity

D. A Warehouse can be configured to auto-resume when new queries are submitted

Answer: ABCD

Explanation:

Reference: <https://docs.snowflake.com/en/user-guide/warehouses-multiclust.html>

NEW QUESTION 129

- (Exam Topic 1)

True or false: it is best practice to define a clustering key on every table.

A. True

B. False

Answer: B

Explanation:

Reference: <https://dwgeek.com/how-to-create-snowflake-clustered-tables-examples.html/>

NEW QUESTION 130

- (Exam Topic 1)

What happens when a Data Provider revokes privileges to a Share on an object in their source database?

A. The object immediately becomes unavailable for all Data Consumers

B. Any additional data arriving after this point in time will not be visible to Data Consumers

C. The Data Consumers stop seeing data updates and become responsible for storage charges for the object

D. A static copy of the object at the time the privilege was revoked is created In the Data Consumers' accounts

Answer: A

NEW QUESTION 134

- (Exam Topic 1)

True or False: Multi_Factor Authentication (MFA) in Snowflake is only supported in conjunction with single Sign-on (sso).

A. True

B. False

Answer: B

Explanation:

Reference: <https://docs.snowflake.com/en/user-guide/admin-security-fed-auth-use.html>

NEW QUESTION 137

- (Exam Topic 1)

Which of the following are main sections of the top navigation of the Snowflake web Interface (UI)?

A. Database

B. Tables

C. Warehouses

D. Worksheets

Answer: ACD

Explanation:

Reference: <https://docs.snowflake.com/en/user-guide/snowflake-manager.html>

NEW QUESTION 141

- (Exam Topic 2)

Which of the following Snowflake features provide continuous data protection automatically? (Select TWO).

A. Internal stages

B. Incremental backups

C. Time Travel

D. Zero-copy clones

E. Fail-safe

Answer: CE

Explanation:

Time travel and fail safe are the two continuous data protection features support the recovery of data automatically.

Snowflake provides powerful CDP features for ensuring the maintenance and availability of your historical data (i.e. data that has been changed or deleted):

➤ Querying, cloning, and restoring historical data in tables, schemas, and databases for up to 90 days through Snowflake Time Travel.

➤ Disaster recovery of historical data (by Snowflake) through Snowflake Fail-safe. <https://docs.snowflake.com/en/user-guide/data-availability.html>

NEW QUESTION 146

- (Exam Topic 2)

Which of the following is a valid source for an external stage when the Snowflake account is located on Microsoft Azure?

- A. An FTP server with TLS encryption
- B. An HTTPS server with WebDAV
- C. A Google Cloud storage bucket
- D. A Windows server file share on Azure

Answer: C

NEW QUESTION 147

- (Exam Topic 2)

Which of the following are valid methods for authenticating users for access into Snowflake? (Select THREE)

- A. SCIM
- B. Federated authentication
- C. TLS 1.2
- D. Key-pair authentication
- E. OAuth
- F. OCSP authentication

Answer: BDE

NEW QUESTION 151

- (Exam Topic 2)

In which scenarios would a user have to pay Cloud Services costs? (Select TWO).

- A. Compute Credits = 50 Credits Cloud Services = 10
- B. Compute Credits = 80 Credits Cloud Services = 5
- C. Compute Credits = 10 Credits Cloud Services = 9
- D. Compute Credits = 120 Credits Cloud Services = 10
- E. Compute Credits = 200 Credits Cloud Services = 26

Answer: BD

NEW QUESTION 152

- (Exam Topic 2)

A user has 10 files in a stage containing new customer data. The ingest operation completes with no errors, using the following command:

`COPY INTO my__table FROM @my__stage;`

The next day the user adds 10 files to the stage so that now the stage contains a mixture of new customer data and updates to the previous data. The user did not remove the 10 original files.

If the user runs the same copy into command what will happen?

- A. All data from all of the files on the stage will be appended to the table
- B. Only data about new customers from the new files will be appended to the table
- C. The operation will fail with the error uncertain files in stage.
- D. All data from only the newly-added files will be appended to the table.

Answer: A

NEW QUESTION 154

- (Exam Topic 2)

What is a responsibility of Snowflake's virtual warehouses?

- A. Infrastructure management
- B. Metadata management
- C. Query execution
- D. Query parsing and optimization
- E. Management of the storage layer

Answer: C

NEW QUESTION 155

- (Exam Topic 2)

True or False: It is possible for a user to run a query against the query result cache without requiring an active Warehouse.

- A. True
- B. False

Answer: A

Explanation:

Query result cache is all about fetching the data from cloud services layer and saving the cost by not running the virtual warehouse.

NEW QUESTION 157

- (Exam Topic 2)

The fail-safe retention period is how many days?

- A. 1 day
- B. 7 days
- C. 45 days
- D. 90 days

Answer: B

Explanation:

Reference: <https://docs.snowflake.com/en/user-guide/data-failsafe.html>

NEW QUESTION 162

- (Exam Topic 2)

What features does Snowflake Time Travel enable?

- A. Querying data-related objects that were created within the past 365 days
- B. Restoring data-related objects that have been deleted within the past 90 days
- C. Conducting point-in-time analysis for BI reporting
- D. Analyzing data usage/manipulation over all periods of time

Answer: B

Explanation:

Snowflake Time Travel enables accessing historical data (i.e. data that has been changed or deleted) at any point within a defined period. It serves as a powerful tool for performing the following tasks:

- Restoring data-related objects (tables, schemas, and databases) that might have been accidentally or intentionally deleted.
- Duplicating and backing up data from key points in the past.
- Analyzing data usage/manipulation over specified periods of time.

<https://docs.snowflake.com/en/user-guide/data-time-travel.html>

NEW QUESTION 167

- (Exam Topic 2)

In which use cases does Snowflake apply egress charges?

- A. Data sharing within a specific region
- B. Query result retrieval
- C. Database replication
- D. Loading data into Snowflake

Answer: A

Explanation:

Cloud providers apply data egress charges in either of the following use cases:

- Data is transferred from one region to another within the same cloud platform.
- Data is transferred out of the cloud platform.

<https://docs.snowflake.com/en/user-guide/billing-data-transfer.html#:~:text=Cloud%20providers%20apply%20d>

NEW QUESTION 171

- (Exam Topic 2)

Will data cached in a warehouse be lost when the warehouse is resized?

- A. Possibly, if the warehouse is resized to a smaller size and the cache no longer fits.
- B. Ye
- C. because the compute resource is replaced in its entirety with a new compute resource.
- D. N
- E. because the size of the cache is independent from the warehouse size
- F. Ye
- G. became the new compute resource will no longer have access to the cache encryption key

Answer: A

NEW QUESTION 175

- (Exam Topic 2)

Which command is used to unload data from a Snowflake table into a file in a stage?

- A. COPY INTO
- B. GET
- C. WRITE
- D. EXTRACT INTO

Answer: A

Explanation:

<https://docs.snowflake.com/en/user-guide/data-unload-snowflake.html#:~:text=Your%20User%20Stage-,Use%2>

NEW QUESTION 178

- (Exam Topic 2)

Which stage type can be altered and dropped?

- A. Database stage
- B. External stage
- C. Table stage
- D. User stage

Answer: C

Explanation:

<https://docs.snowflake.com/en/user-guide/data-load-local-file-system-create-stage.html#table-stages>

NEW QUESTION 179

- (Exam Topic 2)

What happens to the underlying table data when a CLUSTER BY clause is added to a Snowflake table?

- A. Data is hashed by the cluster key to facilitate fast searches for common data values
- B. Larger micro-partitions are created for common data values to reduce the number of partitions that must be scanned
- C. Smaller micro-partitions are created for common data values to allow for more parallelism
- D. Data may be colocated by the cluster key within the micro-partitions to improve pruning performance

Answer: D

NEW QUESTION 182

- (Exam Topic 2)

A user unloaded a Snowflake table called mytable to an internal stage called mystage. Which command can be used to view the list of files that has been uploaded to the staged?

- A. list @mytable;
- B. list @%mytable;
- C. list @ %m.ystage;
- D. list @mystage;

Answer: D

NEW QUESTION 185

- (Exam Topic 2)

Which Snowflake object enables loading data from files as soon as they are available in a cloud storage location?

- A. Pipe
- B. External stage
- C. Task
- D. Stream

Answer: A

Explanation:

Snowpipe enables loading data from files as soon as they're available in a stage. This means you can load data from files in micro-batches, making it available to users within minutes, rather than manually executing COPY statements on a schedule to load larger batches.

<https://docs.snowflake.com/en/user-guide/data-load-snowpipe-intro.html>

NEW QUESTION 187

- (Exam Topic 2)

When reviewing a query profile, what is a symptom that a query is too large to fit into the memory?

- A. A single join node uses more than 50% of the query time
- B. Partitions scanned is equal to partitions total
- C. An AggregateOperator node is present
- D. The query is spilling to remote storage

Answer: D

NEW QUESTION 190

- (Exam Topic 2)

What SQL command would be used to view all roles that were granted to user.1?

- A. show grants to user USER1;
- B. show grants of user USER1;
- C. describe user USER1;
- D. show grants on user USER1;

Answer: A

NEW QUESTION 194

- (Exam Topic 2)

What are the default Time Travel and Fail-safe retention periods for transient tables?

- A. Time Travel - 1 da
- B. Fail-safe - 1 day
- C. Time Travel - 0 day
- D. Fail-safe - 1 day
- E. Time Travel - 1 da
- F. Fail-safe - 0 days
- G. Transient tables are retained in neither Fail-safe nor Time Travel

Answer: C

Explanation:

<https://docs.snowflake.com/en/user-guide/data-cdp-storage-costs.html#:~:text=Temporary%20and%20Transient>

NEW QUESTION 197

- (Exam Topic 2)

What Snowflake role must be granted for a user to create and manage accounts?

- A. ACCOUNTADMIN
- B. ORGADMIN
- C. SECURITYADMIN
- D. SYSADMIN

Answer: A

Explanation:

<https://docs.snowflake.com/en/user-guide/security-access-control-considerations.html>

NEW QUESTION 199

- (Exam Topic 2)

The Information Schema and Account Usage Share provide storage information for which of the following objects? (Choose three.)

- A. Users
- B. Tables
- C. Databases
- D. Internal Stages

Answer: ABC

NEW QUESTION 203

- (Exam Topic 2)

What is the default character set used when loading CSV files into Snowflake?

- A. UTF-8
- B. UTF-16
- C. ISO S859-1
- D. ANSI_X3.A

Answer: A

Explanation:

<https://docs.snowflake.com/en/user-guide/intro-summary-loading.html#:~:text=For%20delimited%20files%20>(For delimited files (CSV, TSV, etc.), the default character set is UTF-8. To use any other characters sets, you must explicitly specify the encoding to use for loading. For the list of supported character sets, see Supported Character Sets for Delimited Files (in this topic).

NEW QUESTION 206

- (Exam Topic 2)

Which of the following Snowflake capabilities are available in all Snowflake editions? (Select TWO)

- A. Customer-managed encryption keys through Tri-Secret Secure
- B. Automatic encryption of all data
- C. Up to 90 days of data recovery through Time Travel
- D. Object-level access control
- E. Column-level security to apply data masking policies to tables and views

Answer: BD

Explanation:

<https://docs.snowflake.com/en/user-guide/intro-editions.html>

NEW QUESTION 207

- (Exam Topic 2)

Which of the following describes how clustering keys work in Snowflake?

- A. Clustering keys update the micro-partitions in place with a full sort, and impact the DML operations.
- B. Clustering keys sort the designated columns over time, without blocking DML operations
- C. Clustering keys create a distributed, parallel data structure of pointers to a table's rows and columns
- D. Clustering keys establish a hashed key on each node of a virtual warehouse to optimize joins at run-time

Answer: B

NEW QUESTION 212

- (Exam Topic 2)

Which cache type is used to cache data output from SQL queries?

- A. Metadata cache
- B. Result cache
- C. Remote cache
- D. Local file cache

Answer: B

Explanation:

<https://community.snowflake.com/s/article/Caching-in-Snowflake-Data-Warehouse>

NEW QUESTION 214

- (Exam Topic 2)

What is a limitation of a Materialized View?

- A. A Materialized View cannot support any aggregate functions
- B. A Materialized View can only reference up to two tables
- C. A Materialized View cannot be joined with other tables
- D. A Materialized View cannot be defined with a JOIN

Answer: D

Explanation:

There are several limitations to using materialized views:

- A materialized view can query only a single table.
- Joins, including self-joins, are not supported.

NEW QUESTION 218

- (Exam Topic 2)

What Snowflake features allow virtual warehouses to handle high concurrency workloads? (Select TWO)

- A. The ability to scale up warehouses
- B. The use of warehouse auto scaling
- C. The ability to resize warehouses
- D. Use of multi-clustered warehouses
- E. The use of warehouse indexing

Answer: BD

NEW QUESTION 219

- (Exam Topic 2)

Which of the following are best practice recommendations that should be considered when loading data into Snowflake? (Select TWO).

- A. Load files that are approximately 25 MB or smaller.
- B. Remove all dates and timestamps.
- C. Load files that are approximately 100-250 MB (or larger)
- D. Avoid using embedded characters such as commas for numeric data types
- E. Remove semi-structured data types

Answer: CD

Explanation:

<https://docs.snowflake.com/en/user-guide/data-load-considerations-prepare.html>

NEW QUESTION 222

- (Exam Topic 2)

What is a key feature of Snowflake architecture?

- A. Zero-copy cloning creates a mirror copy of a database that updates with the original
- B. Software updates are automatically applied on a quarterly basis
- C. Snowflake eliminates resource contention with its virtual warehouse implementation
- D. Multi-cluster warehouses allow users to run a query that spans across multiple clusters
- E. Snowflake automatically sorts DATE columns during ingest for fast retrieval by date

Answer: D

NEW QUESTION 227

- (Exam Topic 2)

What tasks can be completed using the copy command? (Select TWO)

- A. Columns can be aggregated

- B. Columns can be joined with an existing table
- C. Columns can be reordered
- D. Columns can be omitted
- E. Data can be loaded without the need to spin up a virtual warehouse

Answer: CD

NEW QUESTION 230

- (Exam Topic 2)

What are ways to create and manage data shares in Snowflake? (Select TWO)

- A. Through the Snowflake web interface (UI)
- B. Through the DATA_SHARE=TRUE parameter
- C. Through SQL commands
- D. Through the enable share=true parameter
- E. Using the CREATE SHARE AS SELECT * TABLE command

Answer: CD

NEW QUESTION 233

- (Exam Topic 3)

Which of the following are handled by the cloud services layer of the Snowflake architecture? (Choose two.)

- A. Query execution
- B. Data loading
- C. Time Travel data
- D. Security
- E. Authentication and access control

Answer: BD

NEW QUESTION 238

- (Exam Topic 3)

A user is preparing to load data from an external stage

Which practice will provide the MOST efficient loading performance?

- A. Organize files into logical paths
- B. Store the files on the external stage to ensure caching is maintained
- C. Use pattern matching for regular expression execution
- D. Load the data in one large file

Answer: D

NEW QUESTION 241

- (Exam Topic 3)

How many days is load history for Snowpipe retained?

- A. 1 day
- B. 7 days
- C. 14 days
- D. 64 days

Answer: C

NEW QUESTION 245

- (Exam Topic 3)

Which of the following activities consume virtual warehouse credits in the Snowflake environment? (Choose two.)

- A. Caching query results
- B. Running EXPLAIN and SHOW commands
- C. Cloning a database
- D. Running a custom query
- E. Running COPY commands

Answer: AD

NEW QUESTION 250

- (Exam Topic 3)

What is the MINIMUM Snowflake edition required to use the periodic rekeying of micro-partitions?

- A. Enterprise
- B. Business Critical
- C. Standard
- D. Virtual Private Snowflake

Answer: B

Explanation:

Reference: <https://docs.snowflake.com/en/user-guide/intro-editions.html#business-critical-edition>

NEW QUESTION 252

- (Exam Topic 3)

Which feature allows a user the ability to control the organization of data in a micro-partition?

- A. Range Partitioning
- B. Search Optimization Service
- C. Automatic Clustering
- D. Horizontal Partitioning

Answer: D

NEW QUESTION 253

- (Exam Topic 3)

The bulk data load history that is available upon completion of the COPY statement is stored where and for how long?

- A. In the metadata of the target table for 14 days
- B. In the metadata of the pipe for 14 days
- C. In the metadata of the target table for 64 days
- D. In the metadata of the pipe for 64 days

Answer: A

NEW QUESTION 255

- (Exam Topic 3)

Where can a user find and review the failed logins of a specific user for the past 30 days?

- A. The USERS view in ACCOUNT_USAGE
- B. The LOGIN_HISTORY view in ACCOUNT_USAGE
- C. The ACCESS_HISTORY view in ACCOUNT_USAGE
- D. The SESSIONS view in ACCOUNT_USAGE

Answer: B

NEW QUESTION 256

- (Exam Topic 3)

How often are the Account and Table master keys automatically rotated by Snowflake?

- A. 30 Days
- B. 60 Days
- C. 90 Days
- D. 365 Days.

Answer: D

NEW QUESTION 258

- (Exam Topic 3)

Which statement MOST accurately describes clustering in Snowflake?

- A. The database ACCOUNTADMIN must define the clustering methodology for each Snowflake table.
- B. Clustering is the way data is grouped together and stored within Snowflake micro-partitions.
- C. The clustering key must be included in the COPY command when loading data into Snowflake.
- D. Clustering can be disabled within a Snowflake account.

Answer: B

NEW QUESTION 259

- (Exam Topic 3)

How long is the Fail-safe period for temporary and transient tables?

- A. There is no Fail-safe period for these tables.
- B. 1 day
- C. 7 days
- D. 31 days
- E. 90 days

Answer: A

Explanation:

Reference: <https://docs.snowflake.com/en/user-guide/tables-temp-transient.html>

NEW QUESTION 260

- (Exam Topic 3)

Which query profile statistics help determine if efficient pruning is occurring? (Choose two.)

- A. Bytes sent over network
- B. Percentage scanned from cache
- C. Partitions total
- D. Bytes spilled to local storage
- E. Partitions scanned

Answer: BE

NEW QUESTION 263

- (Exam Topic 3)

The first user assigned to a new account, ACCOUNTADMIN, should create at least one additional user with which administrative privilege?

- A. USERADMIN
- B. PUBLIC
- C. ORGADMIN
- D. SYSADMIN

Answer: D

NEW QUESTION 266

- (Exam Topic 3)

A data provider wants to share data with a consumer who does not have a Snowflake account. The provider creates a reader account for the consumer following these steps:

- * 1. Created a user called "CONSUMER"
- * 2. Created a database to hold the share and an extra-small warehouse to query the data
- * 3. Granted the role PUBLIC the following privileges: Usage on the warehouse, database, and schema, and SELECT on all the objects in the share

Based on this configuration what is true of the reader account?

- A. The reader account will automatically use the Standard edition of Snowflake.
- B. The reader account compute will be billed to the provider account.
- C. The reader account can clone data the provider has shared, but cannot re-share it.
- D. The reader account can create a copy of the shared data using CREATE TABLE AS...

Answer: C

NEW QUESTION 270

- (Exam Topic 3)

What is the following SQL command used for? `Select * from table(validate(t1, job_id => '_last'));`

- A. To validate external table files in table t1 across all sessions
- B. To validate task SQL statements against table t1 in the last 14 days
- C. To validate a file for errors before it gets executed using a COPY command
- D. To return errors from the last executed COPY command into table t1 in the current session

Answer: D

NEW QUESTION 271

- (Exam Topic 3)

When publishing a Snowflake Data Marketplace listing into a remote region what should be taken into consideration? (Choose two.)

- A. There is no need to have a Snowflake account in the target region, a share will be created for each user.
- B. The listing is replicated into all selected regions automatically, the data is not.
- C. The user must have the ORGADMIN role available in at least one account to link accounts for replication.
- D. Shares attached to listings in remote regions can be viewed from any account in an organization.
- E. For a standard listing the user can wait until the first customer requests the data before replicating it to the target region.

Answer: AC

NEW QUESTION 272

- (Exam Topic 3)

What is cached during a query on a virtual warehouse?

- A. All columns in a micro-partition
- B. Any columns accessed during the query
- C. The columns in the result set of the query
- D. All rows accessed during the query

Answer: B

NEW QUESTION 276

- (Exam Topic 3)

Which of the following is a data tokenization integration partner?

- A. Protegrity
- B. Tableau

C. DBeaver
D. SAP

Answer: A

NEW QUESTION 280

- (Exam Topic 3)

Which of the following are characteristics of Snowflake virtual warehouses? (Choose two.)

- A. Auto-resume applies only to the last warehouse that was started in a multi-cluster warehouse.
- B. The ability to auto-suspend a warehouse is only available in the Enterprise edition or above.
- C. SnowSQL supports both a configuration file and a command line option for specifying a default warehouse.
- D. A user cannot specify a default warehouse when using the ODBC driver.
- E. The default virtual warehouse size can be changed at any time.

Answer: A

NEW QUESTION 281

- (Exam Topic 3)

A company needs to allow some users to see Personally Identifiable Information (PII) while limiting other users from seeing the full value of the PII. Which Snowflake feature will support this?

- A. Row access policies
- B. Data masking policies
- C. Data encryption
- D. Role based access control

Answer: B

NEW QUESTION 284

- (Exam Topic 3)

Which statement describes how Snowflake supports reader accounts?

- A. A reader account can consume data from the provider account that created it and combine it with its own data.
- B. A consumer needs to become a licensed Snowflake customer as data sharing is only supported between Snowflake accounts.
- C. The users in a reader account can query data that has been shared with the reader account and can perform DML tasks.
- D. The SHOW MANAGED ACCOUNTS command will view all the reader accounts that have been created for an account.

Answer: C

NEW QUESTION 285

- (Exam Topic 3)

User INQUISITIVE_PERSON has been granted the role DATA_SCIENCE. The role DATA_SCIENCE has privileges OWNERSHIP on the schema MARKETING of the database ANALYTICS_DW.

Which command will show all privileges granted to that schema?

- A. SHOW GRANTS ON ROLE DATA_SCIENCE
- B. SHOW GRANTS ON SCHEMA ANALYTICS_DW.MARKETING
- C. SHOW GRANTS TO USER INQUISITIVE_PERSON
- D. SHOW GRANTS OF ROLE DATA_SCIENCE

Answer: B

NEW QUESTION 288

- (Exam Topic 3)

Which of the following can be used when unloading data from Snowflake? (Choose two.)

- A. When unloading semi-structured data, it is recommended that the STRIP_OUTER_ARRAY option be used.
- B. Use the ENCODING file format option to change the encoding from the default UTF-8.
- C. The OBJECT_CONSTRUCT function can be used to convert relational data to semi-structured data.
- D. By using the SINGLE = TRUE parameter, a single file up to 5 GB in size can be exported to the storage layer.
- E. Use the PARSE_JSON function to ensure structured data will be unloaded into the VARIANT data type.

Answer: AD

NEW QUESTION 290

- (Exam Topic 3)

A user has unloaded data from a Snowflake table to an external stage.

Which command can be used to verify if data has been uploaded to the external stage named my_stage?

- A. view @my_stage
- B. list @my_stage
- C. show @my_stage
- D. display @my_stage

Answer: B

NEW QUESTION 292

- (Exam Topic 3)

Assume there is a table consisting of five micro-partitions with values ranging from A to Z. Which diagram indicates a well-clustered table?

A. C:\Users\Admin\Desktop\Data\Odt data\Untitled.jpg



B. C:\Users\Admin\Desktop\Data\Odt data\Untitled.jpg



C. C:\Users\Admin\Desktop\Data\Odt data\Untitled.jpg



D. C:\Users\Admin\Desktop\Data\Odt data\Untitled.jpg



Answer: A

NEW QUESTION 296

- (Exam Topic 3)

When loading data into Snowflake, how should the data be organized?

- A. Into single files with 100-250 MB of compressed data per file
- B. Into single files with 1-100 MB of compressed data per file
- C. Into files of maximum size of 1 GB of compressed data per file
- D. Into files of maximum size of 4 GB of compressed data per file

Answer: A

NEW QUESTION 297

- (Exam Topic 3)

What is the minimum Snowflake edition needed for database failover and fail-back between Snowflake accounts for business continuity and disaster recovery?

- A. Standard
- B. Enterprise
- C. Business Critical
- D. Virtual Private Snowflake

Answer: B

NEW QUESTION 299

- (Exam Topic 3)

What is an advantage of using an explain plan instead of the query profiler to evaluate the performance of a query?

- A. The explain plan output is available graphically.
- B. An explain plan can be used to conduct performance analysis without executing a query.
- C. An explain plan will handle queries with temporary tables and the query profiler will not.
- D. An explain plan's output will display automatic data skew optimization information.

Answer: B

NEW QUESTION 304

- (Exam Topic 3)

Which command can be used to load data files into a Snowflake stage?

- A. JOIN
- B. COPY INTO
- C. PUT
- D. GET

Answer: C

NEW QUESTION 308

- (Exam Topic 3)

A running virtual warehouse is suspended.

What is the MINIMUM amount of time that the warehouse will incur charges for when it is restarted?

- A. 1 second
- B. 60 seconds
- C. 5 minutes
- D. 60 minutes

Answer: B

NEW QUESTION 311

- (Exam Topic 3)

Which minimum Snowflake edition allows for a dedicated metadata store?

- A. Standard
- B. Enterprise
- C. Business Critical
- D. Virtual Private Snowflake

Answer: D

Explanation:

Reference: <https://docs.snowflake.com/en/user-guide/intro-editions.html>

NEW QUESTION 315

- (Exam Topic 3)

Which Snowflake feature allows a user to substitute a randomly generated identifier for sensitive data, in order to prevent unauthorized users access to the data, before loading it into Snowflake?

- A. External Tokenization
- B. External Tables
- C. Materialized Views
- D. User-Defined Table Functions (UDTF)

Answer: A

NEW QUESTION 320

- (Exam Topic 3)

By default, which Snowflake role is required to create a share?

- A. ORGADMIN
- B. SECURITYADMIN
- C. SHAREADMIN
- D. ACCOUNTADMIN

Answer: C

NEW QUESTION 324

- (Exam Topic 3)

What are best practice recommendations for using the ACCOUNTADMIN system-defined role in Snowflake? (Choose two.)

- A. Ensure all ACCOUNTADMIN roles use Multi-factor Authentication (MFA).
- B. All users granted ACCOUNTADMIN role must be owned by the ACCOUNTADMIN role.
- C. The ACCOUNTADMIN role must be granted to only one user.
- D. Assign the ACCOUNTADMIN role to at least two users, but as few as possible.

E. All users granted ACCOUNTADMIN role must also be granted SECURITYADMIN role.

Answer: AD

NEW QUESTION 325

- (Exam Topic 3)

Which data types are supported by Snowflake when using semi-structured data? (Choose two.)

- A. VARIANT
- B. VARRAY
- C. STRUCT
- D. ARRAY
- E. QUEUE

Answer: AD

NEW QUESTION 329

- (Exam Topic 3)

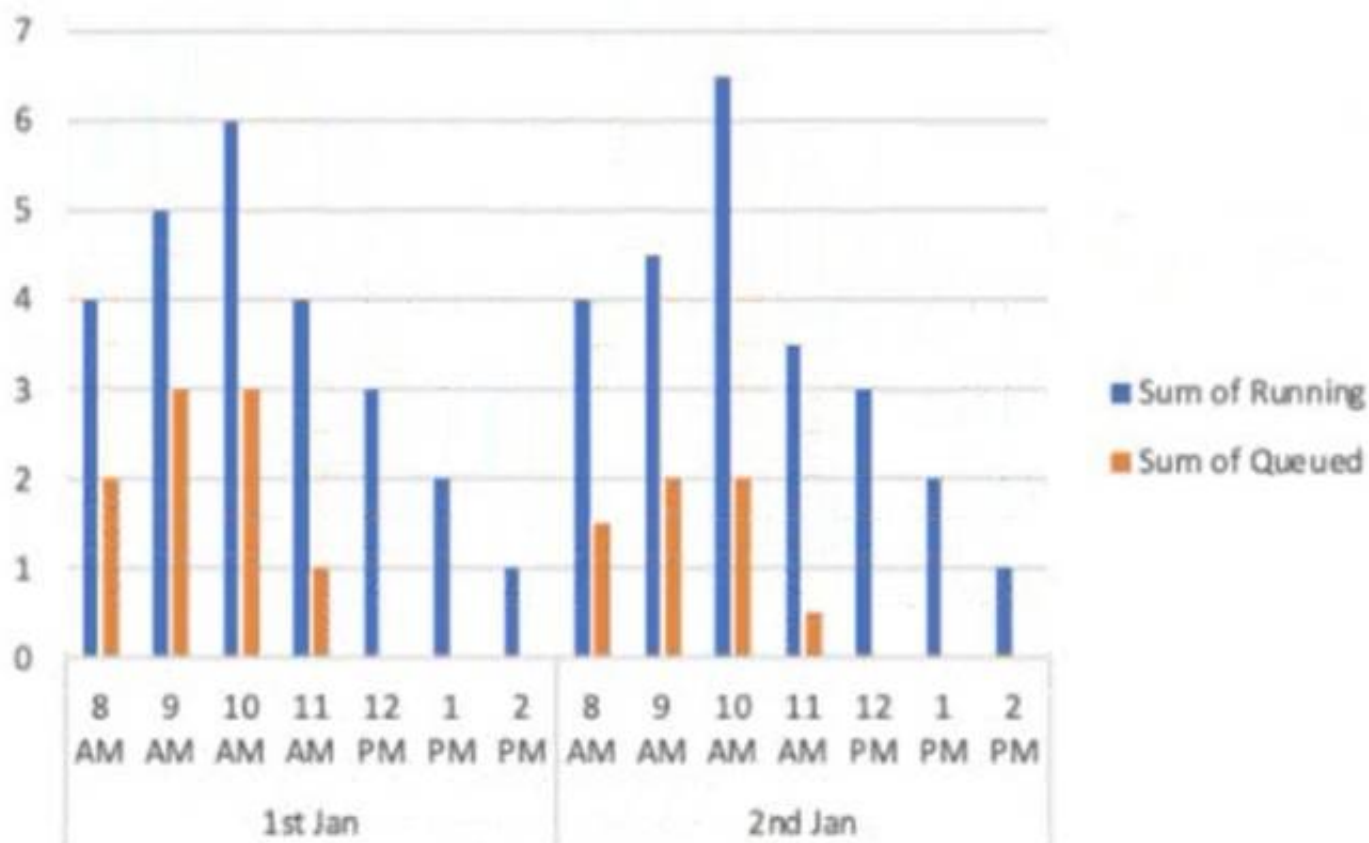
A virtual warehouse is created using the following command:

Create warehouse my_WH with warehouse_size = MEDIUM min_cluster_count = 1

max_cluster_count = 1

auto_suspend = 60 auto_resume = true;

The image below is a graphical representation of the warehouse utilization across two days.



What action should be taken to address this situation?

- A. Increase the warehouse size from Medium to 2XL.
- B. Increase the value for the parameter MAX_CONCURRENCY_LEVEL.
- C. Configure the warehouse to a multi-cluster warehouse.
- D. Lower the value of the parameter STATEMENT_QUEUED_TIMEOUT_IN_SECONDS.

Answer: B

NEW QUESTION 330

- (Exam Topic 3)

What internal stages are available in Snowflake? (Choose three.)

- A. Schema stage
- B. Named stage
- C. User stage
- D. Stream stage
- E. Table stage
- F. Database stage

Answer: ABE

NEW QUESTION 331

- (Exam Topic 3)

How would a user execute a series of SQL statements using a task?

- A. Include the SQL statements in the body of the task CREATE TASK mytask .. AS INSERT INTO target1 SELECT .. FROM stream_s1 WHERE .. INSERT INTO target2 SELECT .. FROM stream_s1 WHERE ..
- B. A stored procedure can have only one DML statement per stored procedure invocation and therefore the user should sequence stored procedure calls in the task definition CREATE TASK mytask AS call stored_proc1(); call stored_proc2();

- C. Use a stored procedure executing multiple SQL statements and invoke the stored procedure from the task.
- D. CREATE TASK mytask AS call stored_proc_multiple_statements_inside();
- E. Create a task for each SQL statement (e.
- F. resulting in task1, task2, etc.) and string the series of SQL statements by having a control task calling task1, task2, et
- G. sequentially.

Answer: D

NEW QUESTION 332

- (Exam Topic 3)

Why does Snowflake recommend file sizes of 100-250 MB compressed when loading data?

- A. Optimizes the virtual warehouse size and multi-cluster setting to economy mode
- B. Allows a user to import the files in a sequential order
- C. Increases the latency staging and accuracy when loading the data
- D. Allows optimization of parallel operations

Answer: D

NEW QUESTION 337

- (Exam Topic 3)

True or False: Snowpipe via REST API can only reference External Stages as source.

- A. True
- B. False

Answer: B

Explanation:

Reference: <https://community.snowflake.com/s/article/Making-Transient-table-by-Default>

NEW QUESTION 339

- (Exam Topic 3)

Which TABLE function helps to convert semi-structured data to a relational representation?

- A. CHECK_JSON
- B. TO_JSON
- C. FLATTEN
- D. PARSE_JSON

Answer: D

NEW QUESTION 342

- (Exam Topic 3)

How should a virtual warehouse be configured if a user wants to ensure that additional multi-clusters are resumed with no delay?

- A. Configure the warehouse to a size larger than generally required
- B. Set the minimum and maximum clusters to autoscale
- C. Use the standard warehouse scaling policy
- D. Use the economy warehouse scaling policy

Answer: B

NEW QUESTION 347

- (Exam Topic 3)

What privilege should a user be granted to change permissions for new objects in a managed access schema?

- A. Grant the OWNERSHIP privilege on the schema.
- B. Grant the OWNERSHIP privilege on the database.
- C. Grant the MANAGE GRANTS global privilege.
- D. Grant ALL privileges on the schema.

Answer: C

NEW QUESTION 352

- (Exam Topic 3)

What versions of Snowflake should be used to manage compliance with Personal Identifiable Information (PII) requirements? (Choose two.)

- A. Custom Edition
- B. Virtual Private Snowflake
- C. Business Critical Edition
- D. Standard Edition
- E. Enterprise Edition

Answer: BC

NEW QUESTION 356

- (Exam Topic 3)

Which of the following are best practices for loading data into Snowflake? (Choose three.)

- A. Aim to produce data files that are between 100 MB and 250 MB in size, compressed.
- B. Load data from files in a cloud storage service in a different region or cloud platform from the service or region containing the Snowflake account, to save on cost.
- C. Enclose fields that contain delimiter characters in single or double quotes.
- D. Split large files into a greater number of smaller files to distribute the load among the compute resources in an active warehouse.
- E. When planning which warehouse(s) to use for data loading, start with the largest warehouse possible.
- F. Partition the staged data into large folders with random paths, allowing Snowflake to determine the bestway to load each file.

Answer: BCE

NEW QUESTION 358

- (Exam Topic 3)

How would a user run a multi-cluster warehouse in maximized mode?

- A. Configure the maximum clusters setting to "Maximum."
- B. Turn on the additional clusters manually after starting the warehouse.
- C. Set the minimum Clusters and maximum Clusters settings to the same value.
- D. Set the minimum clusters and maximum clusters settings to different values.

Answer: D

NEW QUESTION 363

- (Exam Topic 3)

Which URL type allows users to access unstructured data without authenticating into Snowflake or passing an authorization token?

- A. Pre-signed URL
- B. Scoped URL
- C. Signed URL
- D. File URL

Answer: C

NEW QUESTION 364

- (Exam Topic 3)

What happens to historical data when the retention period for an object ends?

- A. The data is cloned into a historical object.
- B. The data moves to Fail-safe
- C. Time Travel on the historical data is dropped.
- D. The object containing the historical data is dropped.

Answer: D

NEW QUESTION 367

- (Exam Topic 3)

The Snowflake cloud services layer is responsible for which tasks? (Choose two.)

- A. Local disk caching
- B. Authentication and access control
- C. Metadata management
- D. Query processing
- E. Database storage

Answer: CD

NEW QUESTION 372

- (Exam Topic 3)

What occurs when a pipe is recreated using the CREATE OR REPLACE PIPE command?

- A. The Pipe load history is reset to empty.
- B. The REFRESH command is executed.
- C. The stage will be purged.
- D. The destination table is truncated.

Answer: B

NEW QUESTION 376

- (Exam Topic 3)

How does Snowflake Fail-safe protect data in a permanent table?

- A. Fail-safe makes data available up to 1 day, recoverable by user operations.
- B. Fail-safe makes data available for 7 days, recoverable by user operations.
- C. Fail-safe makes data available for 7 days, recoverable only by Snowflake Support.

D. Fail-safe makes data available up to 1 day, recoverable only by Snowflake Support.

Answer: C

NEW QUESTION 381

- (Exam Topic 3)

Which Snowflake architectural layer is responsible for a query execution plan?

- A. Compute
- B. Data storage
- C. Cloud services
- D. Cloud provider

Answer: D

NEW QUESTION 385

- (Exam Topic 3)

Which of the following statements apply to Snowflake in terms of security? (Choose two.)

- A. Snowflake leverages a Role-Based Access Control (RBAC) model.
- B. Snowflake requires a user to configure an IAM user to connect to the database.
- C. All data in Snowflake is encrypted.
- D. Snowflake can run within a user's own Virtual Private Cloud (VPC).
- E. All data in Snowflake is compressed.

Answer: AD

NEW QUESTION 390

- (Exam Topic 3)

What file formats does Snowflake support for loading semi-structured data? (Choose three.)

- A. TSV
- B. JSON
- C. PDF
- D. Avro
- E. Parquet
- F. JPEG

Answer: BDE

NEW QUESTION 394

- (Exam Topic 3)

Which statements are correct concerning the leveraging of third-party data from the Snowflake Data Marketplace? (Choose two.)

- A. Data is live, ready-to-query, and can be personalized.
- B. Data needs to be loaded into a cloud provider as a consumer account.
- C. Data is not available for copying or moving to an individual Snowflake account.
- D. Data is available without copying or moving.
- E. Data transformations are required when combining Data Marketplace datasets with existing data in Snowflake.

Answer: AD

NEW QUESTION 399

- (Exam Topic 3)

Which of the following statements describe features of Snowflake data caching? (Choose two.)

- A. When a virtual warehouse is suspended, the data cache is saved on the remote storage layer.
- B. When the data cache is full, the least-recently used data will be cleared to make room.
- C. A user can only access their own queries from the query result cache.
- D. A user must set USE_METADATA_CACHE to TRUE to use the metadata cache in queries.
- E. The RESULT_SCAN table function can access and filter the contents of the query result cache.

Answer: BD

NEW QUESTION 403

- (Exam Topic 3)

For non-materialized views, what column in Information Schema and Account Usage identifies whether a view is secure or not?

- A. CHECK_OPTION
- B. IS_SECURE
- C. IS_UPDATEABLE
- D. TABLE_NAME

Answer: B

NEW QUESTION 404

- (Exam Topic 3)

Which of the following features are available with the Snowflake Enterprise edition? (Choose two.)

- A. Database replication and failover
- B. Automated index management
- C. Customer managed keys (Tri-secret secure)
- D. Extended time travel
- E. Native support for geospatial data

Answer: AD

NEW QUESTION 407

.....

Relate Links

100% Pass Your SnowPro-Core Exam with Exambible Prep Materials

<https://www.exambible.com/SnowPro-Core-exam/>

Contact us

We are proud of our high-quality customer service, which serves you around the clock 24/7.

Viste - <https://www.exambible.com/>