

Exam Questions 200-301

Cisco Certified Network Associate

<https://www.2passeasy.com/dumps/200-301/>



NEW QUESTION 1

What are two benefits of network automation? (Choose two)

- A. reduced operational costs
- B. reduced hardware footprint
- C. faster changes with more reliable results
- D. fewer network failures
- E. increased network security

Answer: AC

NEW QUESTION 2

Which option about JSON is true?

- A. uses predefined tags or angle brackets () to delimit markup text
- B. used to describe structured data that includes arrays
- C. used for storing information
- D. similar to HTML, it is more verbose than XML

Answer: B

NEW QUESTION 3

Which IPv6 address type provides communication between subnets and cannot route on the Internet?

- A. global unicast
- B. unique local
- C. link-local
- D. multicast

Answer: B

NEW QUESTION 4

Which set of action satisfy the requirement for multifactor authentication?

- A. The user swipes a key fob, then clicks through an email link
- B. The user enters a user name and password, and then clicks a notification in an authentication app on a mobile device
- C. The user enters a PIN into an RSA token, and then enters the displayed RSA key on a login screen
- D. The user enters a user name and password and then re-enters the credentials on a second screen

Answer: A

NEW QUESTION 5

Which two capacities of Cisco DNA Center make it more extensible? (Choose two)

- A. adapters that support all families of Cisco IOS software
- B. SDKs that support interaction with third-party network equipment
- C. customized versions for small, medium, and large enterprises
- D. REST APIs that allow for external applications to interact natively with Cisco DNA Center
- E. modular design that is upgradable as needed

Answer: BD

NEW QUESTION 6

netmask	must be unique
OSPF process ID	
router ID	must match
IP address	
area ID	
timers	

- A. Mastered
- B. Not Mastered

Answer: A

Explanation:



NEW QUESTION 7

Which two must be met before SSH can operate normally on a Cisco IOS switch? (Choose two)

- A. The switch must be running a k9 (crypto) IOS image
- B. The Ip domain-name command must be configured on the switch
- C. IP routing must be enabled on the switch
- D. A console password must be configured on the switch
- E. Telnet must be disabled on the switch

Answer: BC

NEW QUESTION 8

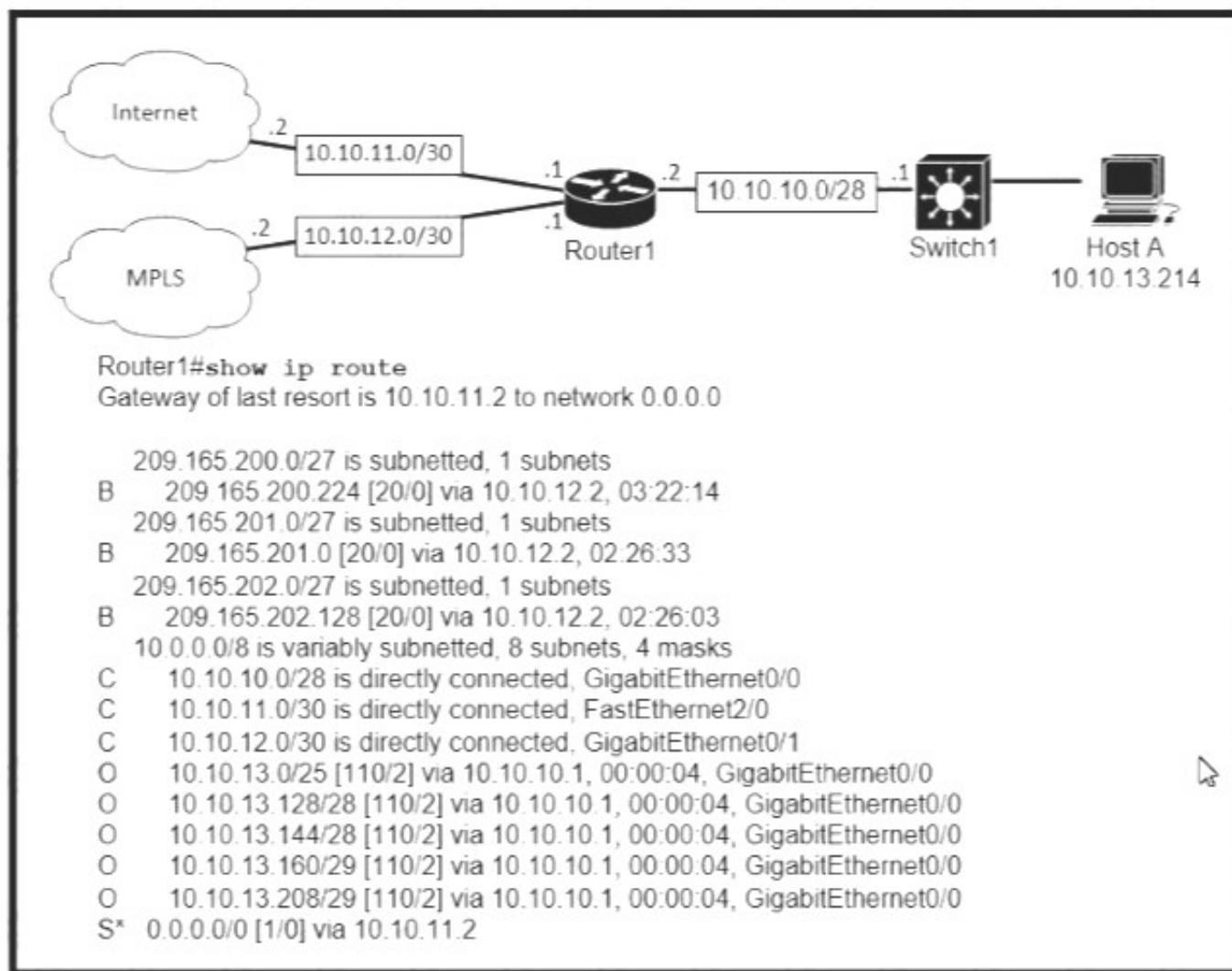
Which type of address is the public IP address of a NAT device?

- A. outside global
- B. outsdwde local
- C. inside global
- D. insride local
- E. outside public
- F. inside public

Answer: C

NEW QUESTION 9

Refer to the exhibit.



Which prefix does Router 1 use for traffic to Host A?

- A. 10.10.10.0/28
- B. 10.10.13.0/25
- C. 10.10.13.144/28
- D. 10.10.13.208/29

Answer: C

NEW QUESTION 10

A network engineer must back up 20 network router configurations globally within a customer environment. Which protocol allows the engineer to perform this function using the Cisco IOS MIB?

- A. CDP
- B. SNMP
- C. SMTP
- D. ARP

Answer: C

NEW QUESTION 10

A frame that enters a switch fails the Frame Check Sequence. Which two interface counters are incremented? (Choose two)

- A. runs
- B. giants
- C. frame
- D. CRC
- E. input errors

Answer: DE

NEW QUESTION 15

When OSPF learns multiple paths to a network, how does it select a route?

- A. It multiple the active K value by 256 to calculate the route with the lowest metric.
- B. For each existing interface, it adds the metric from the source router to the destination to calculate the route with the lowest bandwidth.
- C. It divides a reference bandwidth of 100 Mbps by the actual bandwidth of the existing interface to calculate the router with the lowest cost.
- D. It count the number of hops between the source router and the destination to determine the router with the lowest metric

Answer: A

NEW QUESTION 19

Refer to the exhibit.

```
Atlanta#conf t
Enter configuration commands, one per line. End with CNTL/Z.
Atlanta(config)#aaa new-model
Atlanta(config)#aaa authentication login default local
Atlanta(config)#line vty 0 4
Atlanta(config-line)#login authentication default
Atlanta(config-line)#exit
Atlanta(config)#username ciscoadmin password adminadmin123
Atlanta(config)#username ciscoadmin privilege 15
Atlanta(config)#enable password cisco123
Atlanta(config)#enable secret testing1234
Atlanta(config)#end
```

Which password must an engineer use to enter the enable mode?

- A. adminadmin123
- B. default
- C. testing 1234
- D. cisco123

Answer: C

NEW QUESTION 20

Which configuration is needed to generate an RSA key for SSH on a router?

- A. Configure the version of SSH
- B. Configure VTY access.
- C. Create a user with a password.
- D. Assign a DNS domain name

Answer: B

NEW QUESTION 23

Drag and drop the threat-mitigation techniques from the left onto the types of threat or attack they mitigate on the right.
 check the answer below.

Configure VACL.

Configure dynamic ARP inspection.

Configure BPDU guard.

Configure root guard.

- A. Mastered
- B. Not Mastered

Answer: A

Explanation:

Configure VACL.

Configure dynamic ARP inspection.

Configure BPDU guard.

Configure root guard.

NEW QUESTION 26

A Cisco IP phone receive untagged data traffic from an attached PC. Which action is taken by the phone?

- A. It allows the traffic to pass through unchanged
- B. It drops the traffic
- C. It tags the traffic with the default VLAN
- D. It tags the traffic with the native VLAN

Answer: C

NEW QUESTION 30

An engineer must configure a /30 subnet between two routers. Which usable IP address and subnet mask combination meets this criteria?

```
interface e0/0
description to HQ-A371:10975
ip address 172.16.1.4 255.255.255.248
```

```
interface e0/0
description to HQ-A371:10975
ip address 10.2.1.3 255.255.255.252
```

```
interface e0/0
description to HQ-A371:10975
ip address 192.168.1.1 255.255.255.248
```

```
interface e0/0
description to HQ-A371:10975
ip address 209.165.201.2 255.255.255.252
```

- A. Option A
- B. Option B
- C. Option C
- D. Option D

Answer: C

NEW QUESTION 32

What are two characteristics of a controller-based network? (Choose two)

- A. The administrator can make configuration updates from the CLI
- B. It uses northbound and southbound APIs to communicate between architectural layers
- C. It moves the control plane to a central point.
- D. It decentralizes the control plane, which allows each device to make its own forwarding decisions
- E. It uses Telnet to report system issues.

Answer: AC

NEW QUESTION 33

Which attribute does a router use to select the best path when two or more different routes to the same destination exist from two different routing protocols.

- A. dual algorithm
- B. metric
- C. administrative distance
- D. hop count

Answer: D

NEW QUESTION 38

What is the default behavior of a Layer 2 switch when a frame with an unknown destination MAC address is received?

- A. The Layer 2 switch drops the received frame
- B. The Layer 2 switch floods packets to all ports except the receiving port in the given VLAN.
- C. The Layer 2 switch sends a copy of a packet to CPU for destination MAC address learning.
- D. The Layer 2 switch forwards the packet and adds the destination MAC address to its MAC address table

Answer: B

NEW QUESTION 41

Refer to the exhibit.

```
R2#show ip nat translations
Pro Inside global      Inside local  Outside local  Outside global
tcp 172.23.104.3:43268 10.4.4.4:43268 172.23.103.10:23 172.23.103.10:23
tcp 172.23.104.4:45507 10.4.4.5:45507 172.23.103.10:80 172.23.103.10:80
```

An engineer configured NAT translations and has verified that the configuration is correct. Which IP address is the source IP?

- A. 10.4.4.4
- B. 10.4.4.5
- C. 172.23.103.10
- D. 172.23.104.4

Answer: C

NEW QUESTION 44

Refer to the exhibit.

```
R1# show ip route
D    192.168.16.0/26 [90/2679326] via 192.168.1.1
R    192.168.16.0/24 [120/3] via 192.168.1.2
O    192.168.16.0/21 [110/2] via 192.168.1.3
i L1 192.168.16.0/27 [115/30] via 192.168.1.4
```

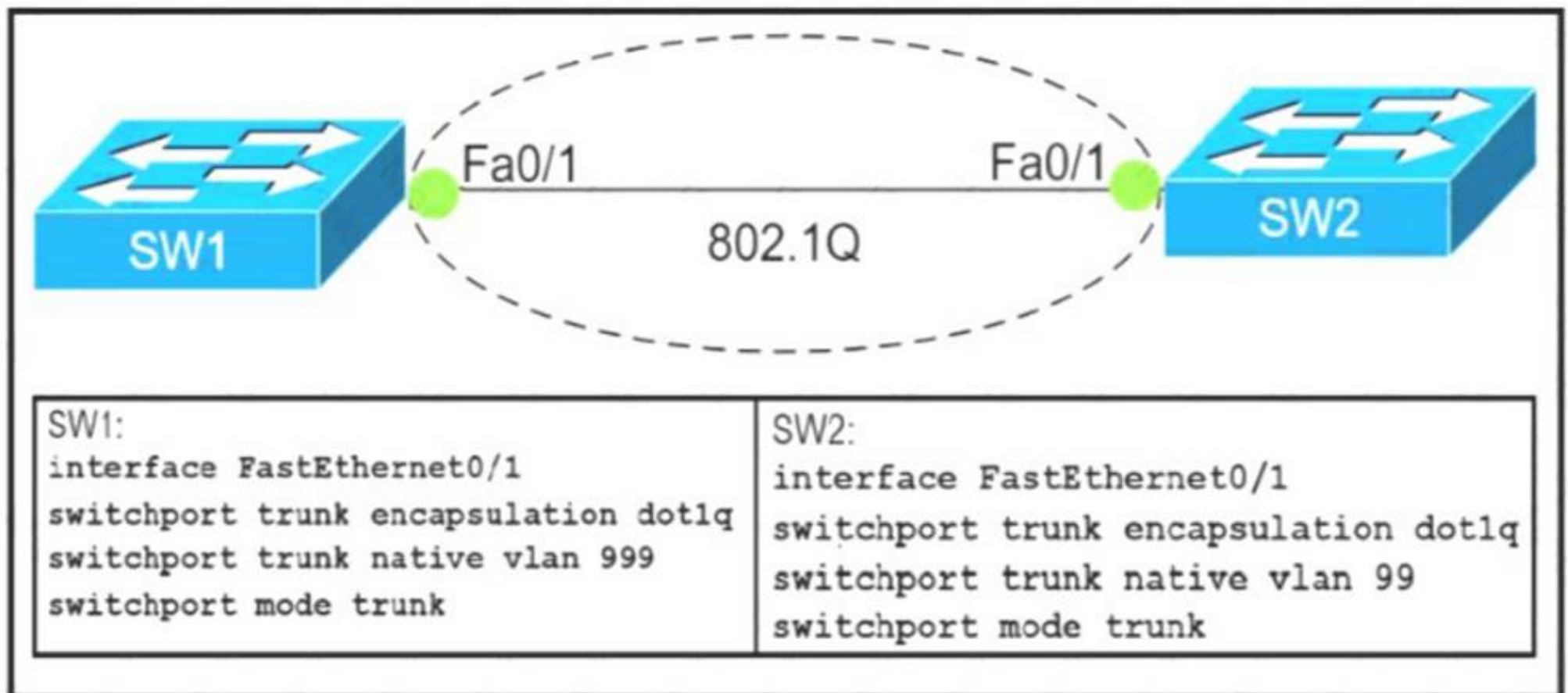
Which route does R1 select for traffic that is destined to 192.168.16.2?

- A. A.-192.168.16.0/21
- B. 192.168.16.0/24
- C. 192.168.26.0/26
- D. 192.168.16.0/27

Answer: B

NEW QUESTION 49

Refer to Exhibit.



Which action do the switches take on the trunk link?

- A. The trunk does not form and the ports go into an err-disabled status.
- B. The trunk forms but the mismatched native VLANs are merged into a single broadcast domain.
- C. The trunk does not form, but VLAN 99 and VLAN 999 are allowed to traverse the link.
- D. The trunk forms but VLAN 99 and VLAN 999 are in a shutdown state.

Answer: C

NEW QUESTION 50

Which command is used to specify the delay time in seconds for LLDP to initialize on any interface?

- A. lldp timer
- B. lldp holdtimt

- C. lldp reinit
- D. lldp tlv-select

Answer: D

NEW QUESTION 51

An engineer configured an OSPF neighbor as a designated router. Which state verifies the designated router is in the proper mode?

- A. Exchange
- B. 2-way
- C. Full
- D. Init

Answer: B

NEW QUESTION 52

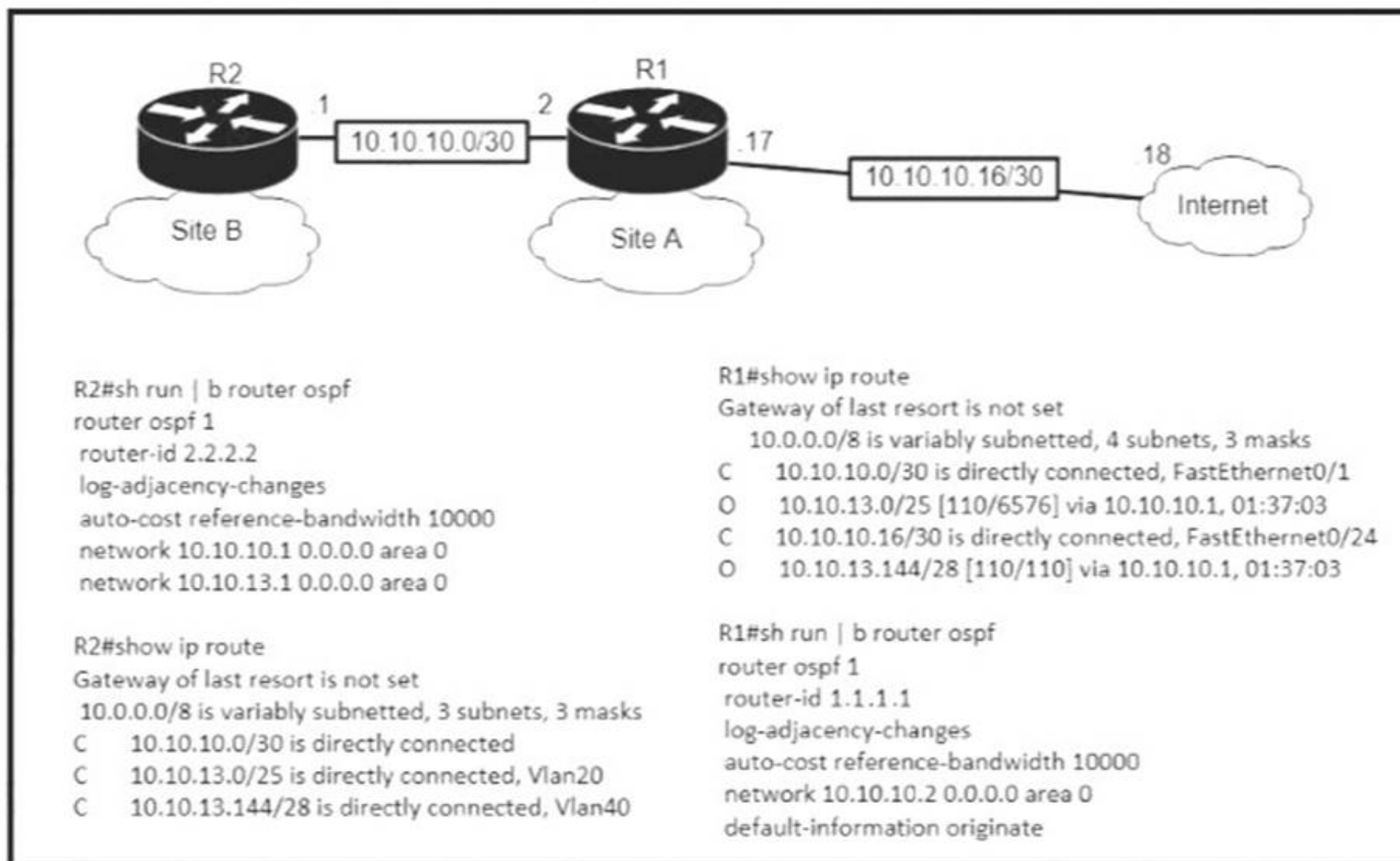
Which QoS Profile is selected in the GUI when configuring a voice over WLAN deployment?

- A. Bronze
- B. Platinum
- C. Silver
- D. Gold

Answer: B

NEW QUESTION 55

Refer to the exhibit.



An engineer is bringing up a new circuit to the MPLS provider on the Gi0/1 interface of Router1. The new circuit uses eBGP and teams the route to VLAN25 from the BGP path. What is the expected behavior for the traffic flow for route 10.10.13.0/25?

- A. Traffic to 10.10.13.0/25 is load balanced out of multiple interfaces
- B. Route 10.10.13.0/25 is updated in the routing table as being learned from interface Gi0/1.
- C. Traffic to 10.10.13.0/25 is asymmetrical
- D. Route 10.10.13.0/25 learned via the Gi0/0 interface remains in the routing table

Answer: D

NEW QUESTION 56

Which statement identifies the functionality of virtual machines?

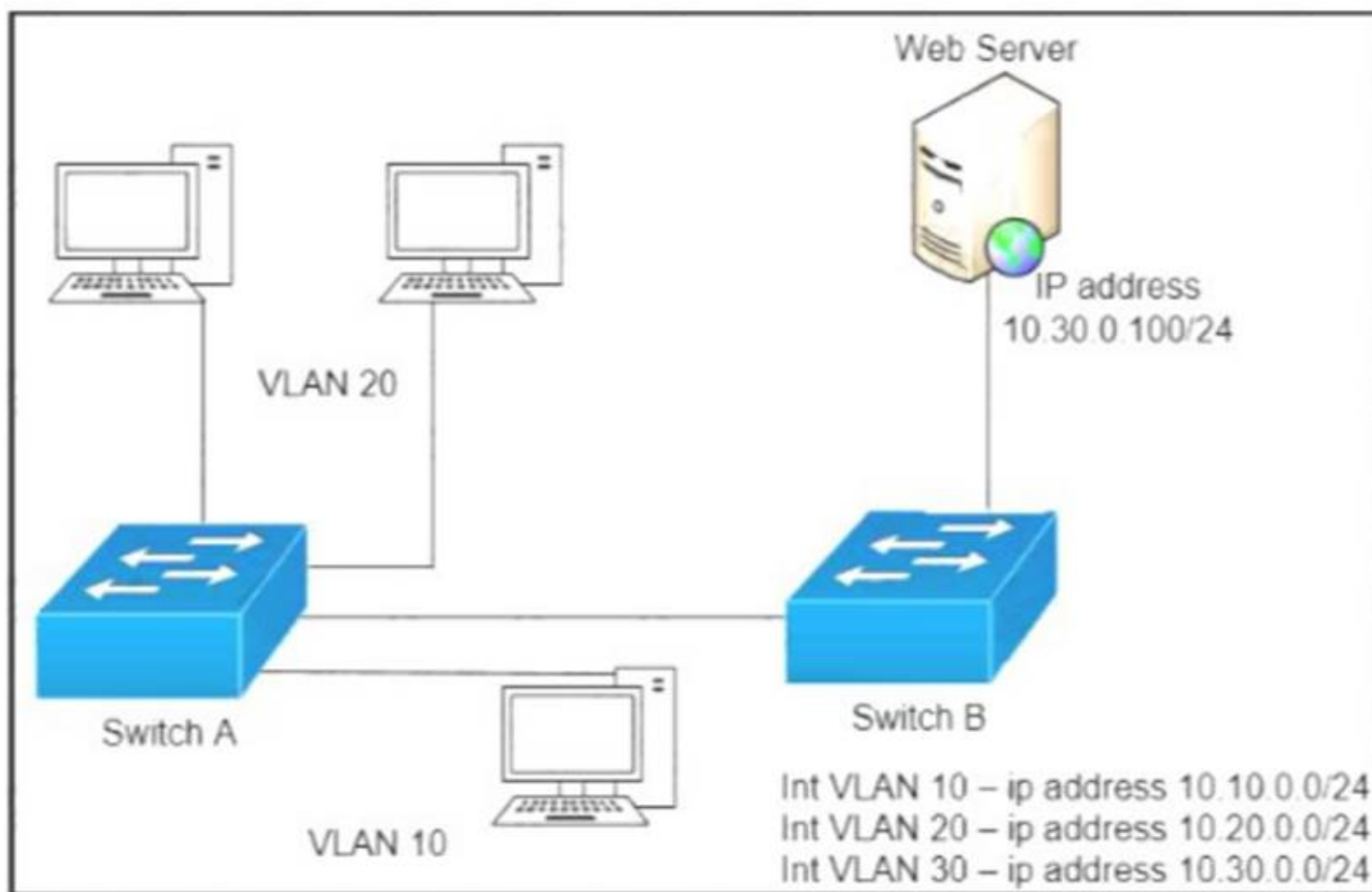
- A. Virtualized servers run most efficiently when they are physically connected to a switch that is separate from the hypervisor
- B. The hypervisor can virtualize physical components including CPU, memory, and storage
- C. Each hypervisor can support a single virtual machine and a single software switch

E. The hypervisor communicates on Layer 3 without the need for additional resources

Answer: D

NEW QUESTION 59

Refer to the exhibit.



A network engineer must block access for all computers on VLAN 20 to the web server via HTTP. All other computers must be able to access the web server. Which configuration when applied to switch A accomplishes this task?

- ☐

```
config t
ip access-list extended wwwblock
deny tcp any host 10.30.0.100 eq 80
int vlan 10
ip access-group wwwblock in
```
- ☐

```
config t
ip access-list extended wwwblock
deny tcp any host 10.30.0.100 eq 80
permit ip any any
int vlan 20
ip access-group wwwblock in
```
- ☐

```
config t
ip access-list extended wwwblock
permit ip any any
deny tcp any host 10.30.0.100 eq 80
int vlan 30
ip access-group wwwblock in
```
- ☐

```
config t
ip access-list extended wwwblock
permit ip any any
deny tcp any host 10.30.0.100 eq 80
int vlan 20
ip access-group wwwblock in
```

- A. Option A
- B. Option B
- C. Option C
- D. Option D

Answer: B

NEW QUESTION 63

Which feature on the Cisco Wireless LAN Controller when enabled restricts management access from specific networks?

- A. CPUACL
- B. TACACS
- C. Flex ACL
- D. RADIUS

Answer: B

NEW QUESTION 67

A user configured OSPF in a single area between two routers A serial interface connecting R1 and R2 is running encapsulation PPP By default which OSPF network type is seen on this interface when the user types show ip ospf interface on R1 or R2?

- A. port-to-multipoint
- B. broadcast
- C. point-to-point
- D. nonbroadcast

Answer: C

NEW QUESTION 69

A user configured OSPF and advertised the Gigabit Ethernet interface in OSPF By default, which type of OSPF network does this interface belong to?

- A. point-to-multipoint
- B. point-to-point
- C. broadcast
- D. nonbroadcast

Answer: B

NEW QUESTION 71

Drag and drop the IPv4 network subnets from the left onto the correct usable host ranges on the right

172.28.228.144/18	172.28.228.1 - 172.28.229.254
172.28.228.144/21	172.28.224.1 - 172.28.231.254
172.28.228.144/23	172.28.228.129 - 172.28.228.254
172.28.228.144/25	172.28.228.145 - 172.28.228.150
172.28.228.144/29	172.28.192.1 - 172.28.255.254

- A. Mastered
- B. Not Mastered

Answer: A

Explanation:



NEW QUESTION 74

Which action is taken by a switch port enabled for PoE power classification override?

- A. When a powered device begins drawing power from a PoE switch port a syslog message is generated
- B. As power usage on a PoE switch port is checked data flow to the connected device is temporarily paused
- C. If a switch determines that a device is using less than the minimum configured power it assumes the device has failed and disconnects
- D. If a monitored port exceeds the maximum administrative value for power, the port is shutdown and err-disabled

Answer: C

NEW QUESTION 79

Which 802.11 frame type is association response?

- A. management
- B. protected frame
- C. control
- D. action

Answer: B

NEW QUESTION 81

Which two tasks must be performed to configure NTP to a trusted server in client mode on a single network device? (Choose two)

- A. Enable NTP authentication.
- B. Verify the time zone.
- C. Disable NTP broadcasts
- D. Specify the IP address of the NTP server
- E. Set the NTP server private key

Answer: DE

NEW QUESTION 86

What makes Cisco DNA Center different from traditional network management applications and their management of networks?

- A. It only supports auto-discovery of network elements in a greenfield deployment.
- B. Its modular design allows someone to implement different versions to meet the specific needs of an organization
- C. IT abstracts policy from the actual device configuration
- D. It does not support high availability of management functions when operating in cluster mode

Answer: A

NEW QUESTION 90

Which mode must be used to configure EtherChannel between two switches without using a negotiation protocol?

- A. on
- B. auto
- C. active
- D. desirable

Answer: D

NEW QUESTION 95

Which statement correctly compares traditional networks and controller-based networks?

- A. Only traditional networks offer a centralized control plane
- B. Only traditional networks natively support centralized management
- C. Traditional and controller-based networks abstract policies from device configurations
- D. Only controller-based networks decouple the control plane and the data plane

Answer: C

NEW QUESTION 99

Refer to the exhibit.

```
R1# show ip route | begin gateway
Gateway of last resort is 209.165.200.246 to network 0.0.0.0
S* 0.0.0.0/0 [1/0] via 209.165.200.246, Serial0/1/0
    is directly connected, Serial0/1/0
172.16.0.0/16 is variably subnetted, 3 subnets, 3 masks
S 172.16.0.0/24 [1/0] via 207.165.200.250, Serial0/0/0
O 172.16.0.128/25 [110/38443] via 207.165.200.254, 00:00:23, Serial0/0/1
D 172.16.0.192/29 [90/3184439] via 207.165.200.254, 00:00:25, Serial0/0/1
209.165.200.0/24 is variably subnetted, 4 subnets, 2 masks
C 209.165.200.248/30 is directly connected, Serial0/0/0
L 209.165.200.249/32 is directly connected, Serial0/0/0
C 209.165.200.252/30 is directly connected, Serial0/0/1
L 209.165.200.253/32 is directly connected, Serial0/0/1
```

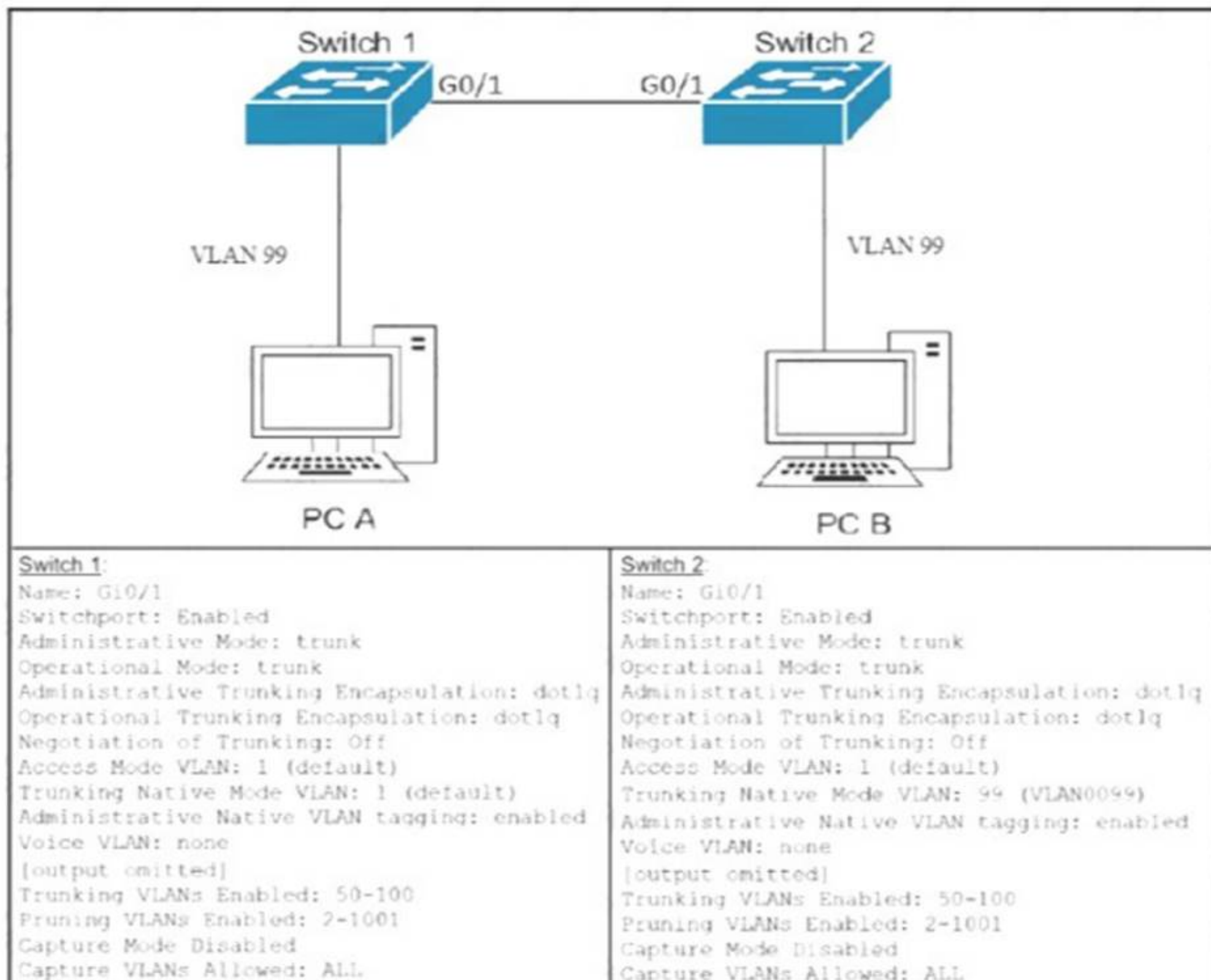
With which metric was the route to host 172.16.0.202 learned?

- A. 110
- B. 38443
- C. 3184439

Answer: C

NEW QUESTION 101

Refer to the Exhibit.



After the switch configuration the ping test fails between PC A and PC B Based on the output for switch 1. which error must be corrected?

- A. There is a native VLAN mismatch
- B. Access mode is configured on the switch ports.
- C. The PCs are in the incorrect VLAN
- D. All VLANs are not enabled on the trunk

Answer: A

NEW QUESTION 105

When configuring a WLAN with WPA2 PSK in the Cisco Wireless LAN Controller GUI, which two formats are available to select? (Choose two)

- A. ASCII
- B. base64
- C. binary
- D. decimal
- E. hexadecimal

Answer: AE

NEW QUESTION 109

Which API is used in controller-based architectures to interact with edge devices?

- A. overlay
- B. northbound
- C. underlay
- D. southbound

Answer: D

NEW QUESTION 113

.....

THANKS FOR TRYING THE DEMO OF OUR PRODUCT

Visit Our Site to Purchase the Full Set of Actual 200-301 Exam Questions With Answers.

We Also Provide Practice Exam Software That Simulates Real Exam Environment And Has Many Self-Assessment Features. Order the 200-301 Product From:

<https://www.2passeasy.com/dumps/200-301/>

Money Back Guarantee

200-301 Practice Exam Features:

- * 200-301 Questions and Answers Updated Frequently
- * 200-301 Practice Questions Verified by Expert Senior Certified Staff
- * 200-301 Most Realistic Questions that Guarantee you a Pass on Your FirstTry
- * 200-301 Practice Test Questions in Multiple Choice Formats and Updatesfor 1 Year