

# Microsoft

## Exam Questions PL-600

Microsoft Power Platform Solution Architect



### NEW QUESTION 1

A large company experiences high staff turnover rates. As a result, the company must add or remove multiple system user accounts daily. You need to recommend a security concept which will facilitate complex security profiles to entities for large groups of users across the Power Apps and Dynamics 365 applications. What should you recommend?

- A. Hierarchy security
- B. Field-level security
- C. User access management
- D. Team privileges

**Answer: D**

#### Explanation:

User and team management is the area of Microsoft Dataverse where you can create and maintain user accounts and profiles. A user is any person who works for a business unit who uses Dataverse. Each user has a user account.

A team is a group of users. Teams let users across an organization collaborate and share information.

Note: Why use Dataverse?

- Easy to secure – Data is securely stored so that users can see it only if you grant them access. Role-based security allows you to control access to tables for different users within your organization. Data from your Dynamics 365 applications is also stored within Dataverse, allowing you to quickly build apps that use your Dynamics 365 data and extend your apps with Power Apps.

Reference:

<https://docs.microsoft.com/en-us/powerapps/developer/data-platform/user-team-entities>

<https://docs.microsoft.com/en-us/powerapps/maker/data-platform/data-platform-intro>

### NEW QUESTION 2

#### HOTSPOT

An animal welfare organization wants to track the movement of wolf packs in a region. Cameras at specific locations capture images when motion is detected within the camera sensor range. Staff upload the images manually to a shared drive and then analyze the images.

The organization wants to automate image capture and analysis.

The organization has the following requirements: Save captured images in an appropriate location.

Analyze saved images by using an image recognition process.

Display data in real-time dashboards.

You need to recommend the correct technology for the requirements.

What should you recommend? To answer, select the appropriate options in the answer area.

NOTE: Each correct selection is worth one point.

Hot Area:

#### Answer Area

Requirement	Technology option
Save captured images in an appropriate location.	<div>▼</div> <ul style="list-style-type: none"> <li>Business process flow</li> <li>Desktop flow</li> <li>Instant cloud flow</li> <li>Automated cloud flow</li> </ul>
Analyze saved images by using an image recognition process.	<div>▼</div> <ul style="list-style-type: none"> <li>Instant cloud flow and AI Builder</li> <li>Automated cloud flow and AI Builder</li> <li>Desktop flow and AI Builder</li> </ul>
Display data in real-time dashboards.	<div>▼</div> <ul style="list-style-type: none"> <li>Dynamics 365 interactive experience dashboard</li> <li>Model-driven app dashboard with native graphs</li> <li>Model-driven app dashboard with Power BI</li> </ul>

- A. Mastered
- B. Not Mastered

**Answer: A**

#### Explanation:

Box 1: Automated cloud flow.

Create a cloud flow when you want your automation to be triggered either automatically, instantly, or via a schedule.

Automated flows: Create an automation that is triggered by an event such as arrival of an email from a specific person, or a mention of your company in social media.

Incorrect Answers:

Business process flows provide a guide for people to get work done. Desktop flows are used to automate tasks on the Web or the desktop.

Instant flows: Start an automation with a click of a button. Wide range of tasks such as requesting an approval, an action in Teams or SharePoint.

Box 2: Desktop flow and AI Builder

Desktop flows are used to automate tasks on the Web or the desktop. Using Power Automate Desktop you can automate tasks on the desktop as well as the Web.

Box 3: Model-driven app dashboard with Power BI

The Power BI cloud service works with Microsoft Dataverse apps to provide a self-service analytics solution. Power BI automatically refreshes the app's data displayed.

Reference: <https://docs.microsoft.com/en-us/power-automate/flow-types> <https://docs.microsoft.com/en-us/powerapps/maker/model-driven-apps/use-power-bi>

### NEW QUESTION 3

A company uses manual processes to track interactions with customers. The company wants to use Power Platform to improve productivity. The company has the following requirements:

Provide customers with an online portal where they can submit and review cases.

Ensure that customers can chat online with a customer service representative at any time. Route chats to customer service representatives based on skill and availability.

You need to recommend a solution to the company.

Which three components should you recommend? Each correct answer presents part of the solution.

NOTE: Each correct selection is worth one point.

- A. Dynamics 365 Virtual Agents chatbots
- B. Customer self-service portal
- C. Dynamics 365 Field Service
- D. Business process flows
- E. Omnichannel for Customer Service

**Answer:** BDE

#### Explanation:

B: Customer self-service portal: A customer self-service portal enables customers to access self-service knowledge, support resources, view the progress of their cases, and provide feedback.

Note: Based on the selected environment in Power Apps, you can create a Dataverse starter portal or a portal in an environment containing customer engagement apps (Dynamics 365 Sales, Dynamics 365 Customer Service, Dynamics 365 Field Service, Dynamics 365 Marketing, and Dynamics 365 Project Service Automation).

E: Omnichannel for Customer Service offers a suite of capabilities that extend the power of Dynamics 365 Customer Service Enterprise to enable organizations to instantly connect and engage with their customers across digital messaging channels.

Incorrect Answers:

A: The Dynamics 365 Field Service business application helps organizations deliver onsite service to customer locations.

C: Dynamics 365 Virtual agent is a no-code-required AI-based application that is focused on providing customer service organizations the ability to engage in personalized conversations that go beyond the conversational search. Virtual agents provide the ability to deploy and manage the automation of handling problems with specific solutions.

Reference: <https://docs.microsoft.com/en-us/powerapps/maker/portals/portal-templates> <https://docs.microsoft.com/en-us/dynamics365/customer-service/embed-chat-widget-portal>

### NEW QUESTION 4

A client uses Dynamics 365 Sales, Power BI datasets, and Power BI dataflows.

The Dynamics 365 Sales implementation has security roles that restrict data export. You need to ensure that data has the same restrictions in Power BI as it does in Dynamics 365 Sales. You need to design the security to avoid sensitive data from being seen.

Which two actions should you recommend? Each correct answer presents part of the solution.

NOTE: Each correct selection is worth one point.

- A. Use Microsoft Dataverse restrictions before setting up the Power BI reports.
- B. Limit the role in Dynamics 365 Sales to only data allowed so it cannot be exported to Microsoft Excel.
- C. Limit the role and ensure that exporting to Microsoft Excel is not allowed in both Dynamics 365 Sales and Power BI.
- D. Share Power BI dashboards only with users who are supported to see this data.

**Answer:** AB

#### Explanation:

A: When you share a dashboard or report, the people you share it with can view it and interact with it, but can't edit it. They see the same data that you see in the dashboard and reports and get access to the entire underlying dataset unless row-level security (RLS) is applied to the underlying dataset.

B: Depending on the sensitivity of an organization's data, it is often necessary to disable the ability to export or print reports. Reference:

<https://docs.microsoft.com/en-us/power-bi/collaborate-share/service-share-dashboards>

### NEW QUESTION 5

You are a Power Platform consultant for an internet support company.

The company lacks a budget to buy third-party ISVs or add-ons. The company requires a new system that achieves the following:

All support issues must come in by email, need to be logged, and assigned to the support group.

Accounts must synchronize with the parent company Oracle database.

Reports must be sent to the executives on a weekly basis.

No custom code will be used in the system.

You need to recommend the components that should be configured.

Which two components should you recommend? Each correct answer presents part of the solution.

NOTE: Each correct selection is worth one point.

- A. Power Virtual Agents
- B. Microsoft Dataverse
- C. server-side synchronization
- D. Microsoft Customer Voice

**Answer:** BD

#### Explanation:

The Dynamics 365 Customer Voice data is stored in Microsoft Dataverse.

Dynamics 365 Customer Voice is an enterprise feedback management application you can use to easily keep track of the customer metrics that matter the most to

your business. ... It provides a personalized experience, enabling you to collect customer feedback and get relevant insights quickly and easily, all in a few clicks.  
Incorrect Answers:

A: Power Virtual Agents lets you create powerful chatbots that can answer questions posed by your customers, other employees, or visitors to your website or service.

Reference: <https://docs.microsoft.com/en-us/dynamics365/customer-voice/about> <https://docs.microsoft.com/en-us/dynamics365/customer-voice/data-flow>

#### NEW QUESTION 6

##### HOTSPOT

▪ You need to design a Power Platform solution that meets the following requirements: Capture data from a row during deletion to be used in an automated process.

Use AI to process forms and automate data entry from paper-based forms.

Which requirements can be met by using out-of-the box Power Platform components?

Instructions: For each of the following statements, select Yes if the statement is true. Otherwise, select No.

NOTE: Each correct selection is worth one point.

Hot Area:

### Answer Area

	Yes	No
Capture data from a row during deletion to be used in an automated process.	<input type="radio"/>	<input type="radio"/>
Use AI to process forms and automate data entry from paper-based forms.	<input type="radio"/>	<input type="radio"/>

- A. Mastered
- B. Not Mastered

**Answer:** A

##### Explanation:

Box 1: Yes

This can be done with Dataverse flows: The When a row is added, modified or deleted trigger runs a flow whenever a row of a selected table and scope changes or is created.

Box 2: Yes

AI Builder is a Microsoft Power Platform capability that provides AI models that are designed to optimize your business processes. AI Builder enables your business to use AI to automate processes and glean insights from your data in Power Apps and Power Automate.

Reference:

<https://docs.microsoft.com/en-us/power-automate/dataverse/create-update-delete-trigger>

#### NEW QUESTION 7

You need to recommend a reporting solution for the organization.

Which two options should you recommend? Each correct answer presents a complete solution.

NOTE: Each correct selection is worth one point.

- A. AI Builder
- B. SQL Server Reporting Services (SSRS)
- C. Dynamics 365
- D. Power BI

**Answer:** BC

##### Explanation:

The reporting and analytics team must be able to create reports that include data from all facilities and all workers.

Management reports must present an overview of the entire organization. Other reports may be limited to specific offices.

B: Power Apps apps can include reports that provide useful business information to the user. These reports are based on SQL Server Reporting Services and provide the same set of features that are available for typical SQL Server Reporting Services reports.

C: Microsoft Dynamics 365 online and Model-Driven PowerApps offers several advanced reporting options. Advanced reports are often necessary when business requirements demand complex calculations, returning multiple data sets, grouping large sets of data based on rules, and retrieving data from different data sources.

Incorrect Answers:

D: Scenario: Users cannot view Power BI reports within the Power Platform apps.

Note: Power BI enables data insights and better decision-making, while Power Apps enables everyone to build and use apps that connect to business data. Using the Power Apps visual, you can pass context-aware data to a canvas app, which updates in real time as you make changes to your report.

Reference: <https://docs.microsoft.com/en-us/powerapps/maker/model-driven-apps/add-reporting-to-app> <https://powerusers.microsoft.com/t5/Building-Power-Apps/Creating-SSRS-Report-for-Model-Driven-PowerApps/td-p/621866> <https://docs.microsoft.com/en-us/powerapps/maker/canvas-apps/powerapps-custom-visual>

#### NEW QUESTION 8

##### DRAG DROP

You need to recommend solutions to meet the organization's communication needs.

What should you recommend? To answer, drag the appropriate technologies to the correct groups of users. Each technology may be used once, more than once, or not at all. You may need to drag the split bar between panes or scroll to view content.

NOTE: Each correct selection is worth one point.

Select and Place:



## Answer Area

Technologies	Group of users	Technology
Microsoft Teams	First Up employees	
Power Apps portals		
Microsoft 365 Business Voice	Workers	

- A. Mastered  
 B. Not Mastered

**Answer:** A

### Explanation:

Box 1: Microsoft Teams

First up employees must be able to contact each other by using a secure system to ask and answer questions about medical cases.

Microsoft Teams key capabilities: Connected

Secure

Managed Collaborative and productive

Box 2: Microsoft 365 Business Voice

Workers must be able to communicate in near real-time with worker support agents.

Microsoft 365 Business Voice makes it easy for small and medium organizations to turn Microsoft Teams into a powerful and flexible telephone system. It's a replacement for traditional telephony providers and in-house phone systems that can be difficult and costly to manage.

Reference:

<https://docs.microsoft.com/en-us/microsoft-365/solutions/empower-people-to-work-remotely>

<https://docs.microsoft.com/en-us/microsoftteams/business-voice/whats-business-voice>

Testlet 3

Case study

This is a case study. Case studies are not timed separately. You can use as much exam time as you would like to complete each case. However, there may be additional case studies and sections on this exam. You must manage your time to ensure that you are able to complete all questions included on this exam in the time provided.

To answer the questions included in a case study, you will need to reference information that is provided in the case study. Case studies might contain exhibits and other resources that provide more information about the scenario that is described in the case study. Each question is independent of the other questions in this case study.

At the end of this case study, a review screen will appear. This screen allows you to review your answers and to make changes before you move to the next section of the exam. After you begin a new section, you cannot return to this section.

To start the case study

To display the first question in this case study, click the Next button. Use the buttons in the left pane to explore the content of the case study before you answer the questions. Clicking these buttons displays information such as business requirements, existing environment, and problem statements. If the case study has an All Information tab, note that the information displayed is identical to the information displayed on the subsequent tabs. When you are ready to answer a question, click the Question button to return to the question.

Background

Relecloud provides regional air service in North America. The company uses a variety of systems, apps, and services to manage the business. You are hired to design a new solution to manage passenger information, reservations, and maintenance.

Current environment

The company uses Microsoft Office 365.

The company has a custom app for managing and tracking passenger luggage. The app uses Microsoft Dataverse.

For flights longer than four hours, passengers receive a meal. Customers can select a meal when they make a reservation and can save the meal choices as a customer preference.

▪ The company offers two types of meals: standard and vegetarian. Meal types can be temporarily unavailable. The airline is considering offering other meal types, such as gluten-free and low-sodium options. The company uses paper-based reservation checklists to help ensure that all the steps for a reservation are complete. The company uses vendors to service aircraft.

Environment

Ensure that employees can sign in to all Microsoft apps by using one set of credentials per employee. Minimize the use of third-party products and custom development.

Reduce customer support call volumes by having the system automatically resolve common issues.

The security rule for agents must contain the privileges in the default Customer Service Representative security role.

Log issues as cases. The case form must show variable sections based on the case type. Include a custom entity named Seats and grant agents access to the entity. Application use layout should be role specific.

Agents

You must standardize the format used by agents to enter customer phone numbers. Agents need a solution to replace paper reservation checklists.

Agents need dashboards to show a current count of all reservations on the entity. Agents need a way to track reservation issues.

Agents need a visual indicator in the interface to determine the reservation step to provide a seamless customer experience. Agents need different versions of cancellation policies to send customers. One version must be controllable within the system. Agents need to view which pieces of luggage match to each passenger, and then need to add the total on the passenger record.

IT

IT staff needs a mobile solution to see IT cases at the top of the menu since this is their primary focus. IT staff needs a system that is easy to navigate to active cases.

IT specialists want to design Power BI reports. They need to understand the underlying table relationships of the system.

IT specialists need a solution that is visual rather than text-based so they can quickly complete their tasks.

Management

Management requires paginated reports for stakeholders.

Management wants to provide frequent flyers with better service when the flyers call.

Managers need to see all customer dashboards at the top of their menu on their mobile device.

Maintenance

Maintenance supervisors must not have access to Dynamics 365 Customer Service. The supervisors must be able to communicate with the contracts team about contracts. Aircraft maintenance vendors must have only view and upload privileges to their invoices and receipts. Contracts with maintenance companies must be stored in Dynamics 365 Customer Service.

#### NEW QUESTION 9

You need to recommend a solution for agents when working with customers to make reservations.

What should you recommend?

- A. task flows
- B. Business Process Flows
- C. workflows
- D. Power Automate

**Answer: B**

#### Explanation:

Business process flows provide a guide for people to get work done. They provide a streamlined user experience that leads people through the processes their organization has defined for interactions that need to be advanced to a conclusion of some kind.

Use business process flows to define a set of steps for people to follow to take them to a desired outcome.

With business processes flows available as an entity, you can now use advanced finds, views, charts, and dashboards sourced from business process flow data for a given entity, such as a lead or opportunity. Scenario:

Agents need a solution to replace paper reservation checklists.

Agents need dashboards to show a current count of all reservations on the entity. Agents need a way to track reservation issues.

Agents need a visual indicator in the interface to determine the reservation step to provide a seamless customer experience.

Testlet 4

Case study

This is a case study. Case studies are not timed separately. You can use as much exam time as you would like to complete each case. However, there may be additional case studies and sections on this exam. You must manage your time to ensure that you are able to complete all questions included on this exam in the time provided.

To answer the questions included in a case study, you will need to reference information that is provided in the case study. Case studies might contain exhibits and other resources that provide more information about the scenario that is described in the case study. Each question is independent of the other questions in this case study.

At the end of this case study, a review screen will appear. This screen allows you to review your answers and to make changes before you move to the next section of the exam. After you begin a new section, you cannot return to this section.

To start the case study

To display the first question in this case study, click the Next button. Use the buttons in the left pane to explore the content of the case study before you answer the questions. Clicking these buttons displays information such as business requirements, existing environment, and problem statements. If the case study has an All Information tab, note that the information displayed is identical to the information displayed on the subsequent tabs. When you are ready to answer a question, click the Question button to return to the question.

Background

Fabrikam, Inc. manufactures industrial metal cutting machines. The company installs and services the machines for customers.

Fabrikam has manufacturing plants in Canada, France, and China. The company also has regional service organizations that are responsible for installation and maintenance of the machines.

Current environment Overview

Operations for the company are managed very informally. Only a small number of long-term employees are aware of all manufacturing processes. The company has been experiencing quality issues associated with its manufacturing operations and installations.

The company wants to implement a way to capture quality inspection results for each machine produced. Current inspection checklists are stored in the Files section of a Teams channel for inspectors. Inspectors commonly print the incorrect inspection checklist.

The company has specific inspection stations for certain inspection steps. Each station has the gauges and equipment required for related inspection steps. There is often a backlog at specific inspection stations. This results in delays in shipping machines to customers.

Accounting system

The current system does not handle shop floor or manufacturing planning functionality. Machines are assigned serial numbers and placed in stock until they are shipped to customers.

Employee information is maintained only within the accounting system. Access to the information is strictly controlled due to privacy regulations and company policies.

Other systems

The company has an enterprise Microsoft 365 subscription. The company uses Microsoft 365 only for sending and receiving email. The company uses photos of employees to generate employee badges. Photos are uploaded into Microsoft 365 user profiles.

The company recently started using Dynamics 365 Field Service to manage and maintain the machines that it installs for its customers. The app has not been customized.

The company has added roles, skills, and certification proficiencies to Dynamics 365 Field Service resources to support both customer onsite inspections and final manufacturing inspections.

Requirements

Quality inspection app

Fabrikam is evaluating Microsoft Power Platform to determine whether it can meet the company's requirements for a manufacturing defect and quality inspection solution. Each machine produced must be subjected to a quality inspection at various points during production. Each machine must undergo a more extensive quality inspection before the machine can be shipped to the customer. Inspection orders

Inspection orders must:

- Allow entry of quality ratings of passed or failed for each quality metric identified for the machine being rated.

- Include information about the person who performed each inspection step and any comments made by the inspector.- Be automatically marked as failed if one inspection step rating is marked as failed.

- Be automatically marked for re-inspection should a machine fail inspection. The new inspection order must be created by using the originating inspection order as a template. Inspectors must fill in findings comments and upload at least one photo for any inspection step that is marked as failed.

Inspection standardization

Standardized checklists must be stored in the solution for use by inspectors. A copy must be created when a new inspection is initiated. The solution must: Prevent an inspector from proceeding to the next step of the checklist until required information for a step is entered.

Support the addition of steps to inspections to support custom features added to a machine for a customer.

Support the direct input of measurements from testing gauges to avoid incorrect readings being entered by inspectors.

Provide a visual representation of the testing measurement limits for each step. Include an indication of how the measured value compares to measurement limits and whether the measurement is within tolerance. Users must be able to configure the visualizations to display the minimum value and maximum value, and

whether the reading is within the tolerance of a single targeted value. It must also be able to be used for maintenance inspections once the machine has been installed.

Support the ability to store photo references within each inspection step to document defects found during inspections. Security

Users must be active employees of Fabrikam.

When a user signs into the inspection solution, the solution must display a picture of the employee who has signed in. Supervisors must be able to modify standard checklists. Other employees must be prevented from modifying checklists.

You must prevent users from changing inspection order data once an inspection is marked as final. Analytics and reporting The solution must:

Provide metrics including existing and upcoming demand by inspection station, average time spent per user at a station, and average time a machine spends at each inspection point. Provide metrics per inspector including number of inspections performed by month, and number of inspections per rating type (pass, fail).

Provide a printed quality certificate to be included with each machine. Issues

During initial testing of the solution, testers report that they cannot see the photos taken during a previously failed inspection.

#### NEW QUESTION 10

A company has a list of contacts in a Microsoft Excel file. The company wants to load the contact information into a Power Platform solution. You need to recommend a data-loading solution.

What should you recommend?

- A. Use the Excel Template feature.
- B. Add to an existing list of contacts in a static worksheet.
- C. Use the import from Excel feature.

**Answer:** A

#### Explanation:

Import data that's stored somewhere else into your model-driven app using the import feature in Power Apps.

Every table has required columns that must exist in your input file. It's recommended that you download an Excel template, add your data, and then import the file to your app. The template saves time and effort. Don't add or modify columns in the template to avoid issues during the import.

Note:

Step 1: Download an Excel template

To avoid mapping issue, it's recommended that you use an Excel template that you can download from your app. Once the template is downloaded add your data and then import the file back to your app. Remember don't add or modify columns in the template to avoid issues during the import process.

Step 2: Import your data

Use the template that you downloaded in the previous step (modified with your data) and import the file to your app.

Reference: <https://docs.microsoft.com/en-us/powerapps/user/import-data>

#### NEW QUESTION 10

You are designing a database table for a client.

You have the following requirements:

Maintain a comprehensive list of colors and their corresponding RGB values and hexadecimal values. Prevent the addition of duplicate colors based on the hexadecimal value for the color.

You need to recommend a design for the table.

Which two actions should the client perform after the table is created? Each correct answer presents part of the solution.

NOTE: Each correct selection is worth one point.

- A. Mark the hex value column as business required.
- B. Configure and schedule a recurring bulk record deletion job.
- C. Create alternate keys for the table.
- D. Mark the RGB value column as business required.

**Answer:** BC

#### Explanation:

B: Setting a column to Business Required means that the default behavior of a model-driven or canvas app will enforce this requirement in the app.

C: With alternate keys you can now define a column in a Dataverse table to correspond to a unique identifier (or unique combination of columns) used by the external data store. This alternate key can be used to uniquely identify a record in Dataverse in place of the primary key. You must be able to define which columns represent a unique identity for your records. Once you identify the columns that are unique to the table, you can declare them as alternate keys through the customization user interface (UI) or in the code.

Reference: <https://docs.microsoft.com/en-us/powerapps/maker/data-platform/create-edit-field-portal> <https://docs.microsoft.com/en-us/powerapps/developer/data-platform/define-alternate-keys-entity>

#### NEW QUESTION 13

A company sells antique books. The company stores data about book locations in an existing system by using the following database fields: Room, Shelf.

The company must import the data from the existing system into a Power Platform solution. Existing data into must be modified to match the design of the new solution. You need to recommend a solution to combine the room and shelf fields into a single column during the import process.

Which tool should you recommend?

- A. Power Platform dataflows
- B. Data Import Wizard
- C. import from CSV
- D. Microsoft Excel Online

**Answer:** B

#### Explanation:

Dataverse includes a web application tool called Import Data Wizard. You use this tool to import data records from one or more comma-separated values (.csv), XML Spreadsheet 2003 (.xml), or text files. Use transformation mapping to modify data before importing it. For example, split a full name that is contained in the source file into a first name and a last name to match the target columns for a table.

Note:

To implement data import, you typically do the following:

Create a comma-separated values (CSV), XML Spreadsheet 2003 (XMLSS), or text source file. Create a data map or use an existing data map.



Create a comma-separated values (CSV), XML Spreadsheet 2003 (XMLSS), or text source file.

Create a data map or use an existing data map. Associate an import file with a data map.

Upload the content from a source file to the associated import file. Parse the import file.

Transform the parsed data.

Upload the transformed data into the target Dataverse server.

Reference: <https://docs.microsoft.com/en-us/powerapps/developer/data-platform/import-data> <https://docs.microsoft.com/en-us/powerapps/developer/data-platform/add-transformation-mappings-import>

#### NEW QUESTION 16

A company has a Power Platform environment that connects to a third-party marketing application.

The company reports that the data in the Power Platform lead table does not match data from the marketing application. Issues include:

• The owner data in the lead table and the third-party application do not match.

• The Topic column has more information than the related record from the marketing application. There are differences in how telephone numbers are formatted.

You need to determine which processes are causing the issues.

Which three processes may be causing the differences observed? Each correct answer presents a complete solution.

NOTE: Each correct selection is worth one point.

- A. Dataflow
- B. Business rule
- C. Classic workflow
- D. Power Automate cloud flow
- E. Duplicate detection rule

**Answer:** ABC

#### Explanation:

A: With advanced data preparation available in Power Apps, you can create a collection of data called a dataflow, which you can then use to connect with business data from various sources, clean the data, transform it, and then load it to Microsoft Dataverse or your organization's Azure Data Lake Gen2 storage account.

• B: By combining conditions and actions, you can do any of the following with business rules: Set column values

Clear column values

Set column requirement levels Show or hide columns

Enable or disable columns

Validate data and show error messages

Create business recommendations based on business intelligence.

C: Duplicate detection works by comparing generated match codes of existing records with each new record being created. These match codes are created as each new record is created. Therefore, there is potential for one or more duplicate records to be created if they are processed at the exact same moment. In addition to detecting duplicates as they are created, you should schedule duplicate detection jobs to check for other potential duplicate records.

Reference:

<https://docs.microsoft.com/en-us/powerapps/maker/data-platform/data-platform-create-business-rule>

<https://docs.microsoft.com/en-us/powerapps/maker/data-platform/create-and-use-dataflows>

<https://docs.microsoft.com/en-us/powerapps/developer/data-platform/duplicaterule-entities>

#### NEW QUESTION 18

You need to create an Agent security role.

Which three actions should you recommend? Each correct answer presents part of the solution.

NOTE: Each correct selection is worth one point.

- A. Add security to the seat entity and assign users to the Agents role.
- B. Add security to the Core Records and assign users to the Customer Service Representative role.
- C. Copy the Microsoft Dataverse Basic User role.
- D. Rename the Customer Service Representative role to Agents.
- E. Copy the Customer Service Representative role.
- F. Name the new role Agents.

**Answer:** BEF

#### Explanation:

Scenario: The security rule for agents must contain the privileges in the default Customer Service Representative security role.

Create a security role by Copy Role:

Step 1 (E): Copy the Customer Service Representative role. Step 2 (F): Select the New Role Name.

Step 3: (B): When Copying Role is complete, navigate to each tab, ie Core Records, Business Management, Customization, etc. Set the privileges on each tab.

Reference:

<https://docs.microsoft.com/en-us/power-platform/admin/create-edit-security-role>

Case study

This is a case study. Case studies are not timed separately. You can use as much exam time as you would like to complete each case. However, there may be additional case studies and sections on this exam. You must manage your time to ensure that you are able to complete all questions included on this exam in the time provided.

To answer the questions included in a case study, you will need to reference information that is provided in the case study. Case studies might contain exhibits and other resources that provide more information about the scenario that is described in the case study. Each question is independent of the other questions in this case study.

At the end of this case study, a review screen will appear. This screen allows you to review your answers and to make changes before you move to the next section of the exam. After you begin a new section, you cannot return to this section.

To start the case study

To display the first question in this case study, click the Next button. Use the buttons in the left pane to explore the content of the case study before you answer the questions. Clicking these buttons displays information such as business requirements, existing environment, and problem statements. If the case study has an All Information tab, note that the information displayed is identical to the information displayed on the subsequent tabs. When you are ready to answer a question, click the Question button to return to the question.

Background

Fabrikam, Inc. manufactures industrial metal cutting machines. The company installs and services the machines for customers.

Fabrikam has manufacturing plants in Canada, France, and China. The company also has regional service organizations that are responsible for installation and maintenance of the machines.



#### Current environment Overview

Operations for the company are managed very informally. Only a small number of long-term employees are aware of all manufacturing processes. The company has been experiencing quality issues associated with its manufacturing operations and installations. The company wants to implement a way to capture quality inspection results for each machine produced. Current inspection checklists are stored in the Files section of a Teams channel for inspectors. Inspectors commonly print the incorrect inspection checklist. The company has specific inspection stations for certain inspection steps. Each station has the gauges and equipment required for related inspection steps. There is often a backlog at specific inspection stations. This results in delays in shipping machines to customers.

#### Accounting system

The current system does not handle shop floor or manufacturing planning functionality. Machines are assigned serial numbers and placed in stock until they are shipped to customers.

Employee information is maintained only within the accounting system. Access to the information is strictly controlled due to privacy regulations and company policies.

#### Other systems

The company has an enterprise Microsoft 365 subscription. The company uses Microsoft 365 only for sending and receiving email. The company uses photos of employees to generate employee badges. Photos are uploaded into Microsoft 365 user profiles.

The company recently started using Dynamics 365 Field Service to manage and maintain the machines that it installs for its customers. The app has not been customized.

The company has added roles, skills, and certification proficiencies to Dynamics 365 Field Service resources to support both customer onsite inspections and final manufacturing inspections.

#### Requirements

##### Quality inspection app

Fabrikam is evaluating Microsoft Power Platform to determine whether it can meet the company's requirements for a manufacturing defect and quality inspection solution. Each machine produced must be subjected to a quality inspection at various points during production. Each machine must undergo a more extensive quality inspection before the machine can be shipped to the customer. Inspection orders

Inspection orders must:

- Allow entry of quality ratings of passed or failed for each quality metric identified for the machine being rated.
- Include information about the person who performed each inspection step and any comments made by the inspector.- Be automatically marked as failed if one inspection step rating is marked as failed.
- e.

##### Inspection standardization

Standardized checklists must be stored in the solution for use by inspectors. A copy must be created when a new inspection is initiated. The solution must: Prevent an inspector from proceeding to the next step of the checklist until required information for a step is entered. Support the addition of steps to inspections to support custom features added to a machine for a customer.

Support the direct input of measurements from testing gauges to avoid incorrect readings being entered by inspectors.

Provide a visual representation of the testing measurement limits for each step. Include an indication of how the measured value compares to measurement limits and whether the measurement is within tolerance. Users must be able to configure the visualizations to display the minimum value and maximum value, and whether the reading is within the tolerance of a single targeted value. It must also be able to be used for maintenance inspections once the machine has been installed.

Support the ability to store photo references within each inspection step to document defects found during inspections. Security

Users must be active employees of Fabrikam.

When a user signs into the inspection solution, the solution must display a picture of the employee who has signed in. Supervisors must be able to modify standard checklists. Other employees must be prevented from modifying checklists.

You must prevent users from changing inspection order data once an inspection is marked as final. Analytics and reporting The solution must:

Provide metrics including existing and upcoming demand by inspection station, average time spent per user at a station, and average time a machine spends at each inspection point. Provide metrics per inspector including number of inspections performed by month, and number of inspections per rating type (pass, fail).

Provide a printed quality certificate to be included with each machine. Issues

During initial testing of the solution, testers report that they cannot see the photos taken during a previously failed inspection.

#### NEW QUESTION 23

##### HOTSPOT

You need to recommend a solution to meet user interface requirements.

What should you recommend? To answer, select the appropriate options in the answer area.

NOTE: Each correct selection is worth one point.

Hot Area:

#### Answer Area

Requirement	Solution
Visual representation of gauge readings with minimum and maximum tolerances.	<div><div></div><div>Create and embed a Power BI radial gauge. Create and embed a custom visualization component. Create and embed a standard Power Apps donut chart.</div></div>
Add visibility to the manufacturing inspection records for onsite technicians.	<div><div></div><div>Configure mobile offline synchronization. Add an inspection order to the work order form Modify the sitemap for Dynamics 365 Field Service.</div></div>

- A. Mastered  
B. Not Mastered

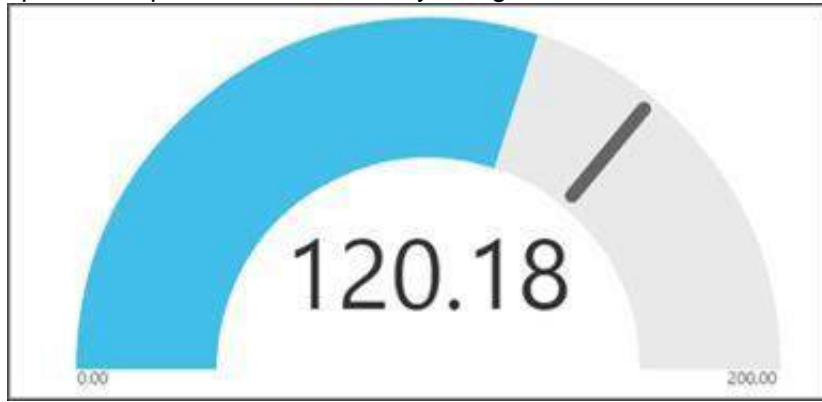
**Answer:** A

#### Explanation:

Box 1: Create and embed a Power Bi radial gauge

A radial gauge chart has a circular arc and shows a single value that measures progress toward a goal or a Key Performance Indicator (KPI). The line (or needle) represents the goal or target value. The shading represents the progress toward that goal. The value inside the arc represents the progress value. Power BI

spreads all possible values evenly along the arc, from the minimum (left-most value) to the maximum (right-most value).

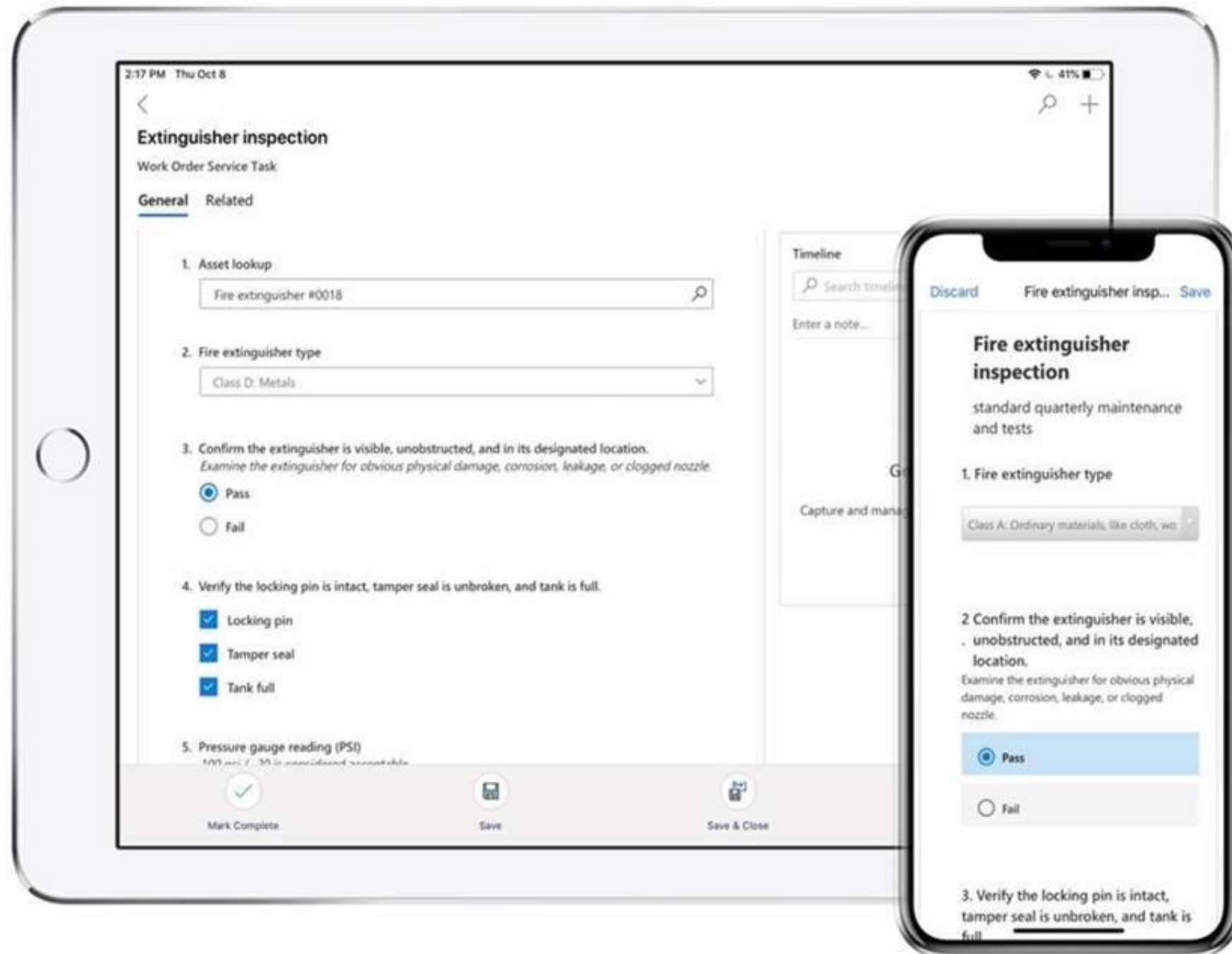


In this example, you're a car retailer tracking the sales team's average sales per month. The needle represents a 140 cars sales goal. The minimum possible average sales is 0 and the maximum is 200. The blue shading shows that the team is averaging approximately 120 sales this month.

Box 2: Add an inspection order to the work order form

You can add inspections to work orders in Dynamics 365 Field Service.

Field Service inspections are digital forms that technicians use to quickly and easily answer a list of questions as part of a work order. The list of questions can include safety protocols, pass-and-fail tests for a customer asset, an interview with a customer, or other audits and assessments performed before, during, or after a work order. Example:



Reference:

<https://docs.microsoft.com/en-us/power-bi/visuals/power-bi-visualization-radial-gauge-charts>

<https://docs.microsoft.com/en-us/dynamics365/field-service/inspections>

#### NEW QUESTION 26

A company has a Power Platform solution that integrates with a third-party system. The client reports that unexpected updates are being made to the Accounts table. You need to determine the root cause of the issue.

In which three locations should you investigate? Each correct answer presents a complete solution.

NOTE: Each correct selection is worth one point.

- A. Audit summary view
- B. Solution history
- C. SDK Message Processing Steps
- D. Plug-in trace log
- E. System job run history

**Answer:** ABD

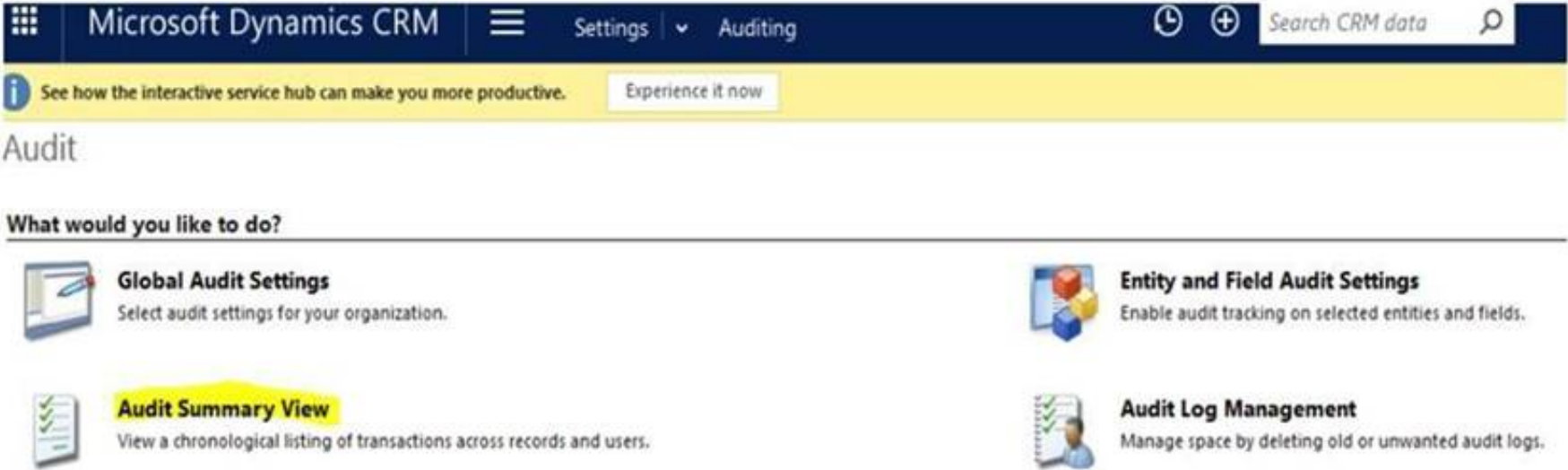
#### Explanation:

A: How to View Auditing Log Details?

System administrators can see activities for the entities that are enabled for audit logging. To view the audit logs:

- \* 1. Go to Settings > System > Auditing.
- \* 2. Choose Audit Summary View.

\* 3. Under Audit Summary View, you will see the list of audit entries



B: You can view details about solution operations from the Solutions area of Power Apps. An operation can be a solution import, export, or uninstall. The solution history displays information such as solution version, solution publisher, type of operation, operation start and end time, and operation status.  
 D: Trace log records are written to the PluginTraceLog Table. Writing of these records is controlled by the trace settings mentioned in Enable trace logging. This data can be found in model-driven applications by navigating to Settings and choosing the Plug-in Trace Log tile.  
 Reference: <https://www.sherweb.com/blog/dynamics-365/audits-dynamics-365/> <https://docs.microsoft.com/en-us/powerapps/developer/data-platform/logging-tracing>

**NEW QUESTION 31**

**HOTSPOT**

You design a Power Platform solution for a customer. The solution uses Microsoft Dataverse as the data store. You are managing the go-live process for the solution. The customer reports the following performance issues:  
 Form load time is much slower than it was during testing.  
 Overall system performance has been significantly slower that it was during testing. You need to recommend how to troubleshoot system performance.  
 Which actions should you recommend? To answer, select the appropriate options in the answer area.  
 NOTE: Each correct selection is worth one point.  
 Hot Area: Correct  
 [MISSING]

- A. Mastered
- B. Not Mastered

**Answer: A**

**Explanation:**

Box 1: Review the fields that are on the form  
 Keep the number of table columns (fields) to a minimum.  
 The more table columns (formerly referred to as fields) you have in a form, the more data that needs to be downloaded to view each record.  
 Box 2: Review one to many relationships to verify whether cascade settings are necessary.  
 Reference: <https://docs.microsoft.com/en-us/powerapps/maker/model-driven-apps/optimize-form-performance>

**NEW QUESTION 32**

.....

## Thank You for Trying Our Product

### We offer two products:

1st - We have Practice Tests Software with Actual Exam Questions

2nd - Questions and Answers in PDF Format

### PL-600 Practice Exam Features:

- \* PL-600 Questions and Answers Updated Frequently
- \* PL-600 Practice Questions Verified by Expert Senior Certified Staff
- \* PL-600 Most Realistic Questions that Guarantee you a Pass on Your First Try
- \* PL-600 Practice Test Questions in Multiple Choice Formats and Updates for 1 Year

**100% Actual & Verified — Instant Download, Please Click**  
**[Order The PL-600 Practice Test Here](#)**