

Cisco

Exam Questions 350-601

Implementing and Operating Cisco Data Center Core Technologies



NEW QUESTION 1

Which product includes prebuilt templates that can be used to customize fabric deployments?

- A. Cisco ACI
- B. Cisco UCS Manger
- C. Cisco data Center Network Manger
- D. Cisco Tetration

Answer: C

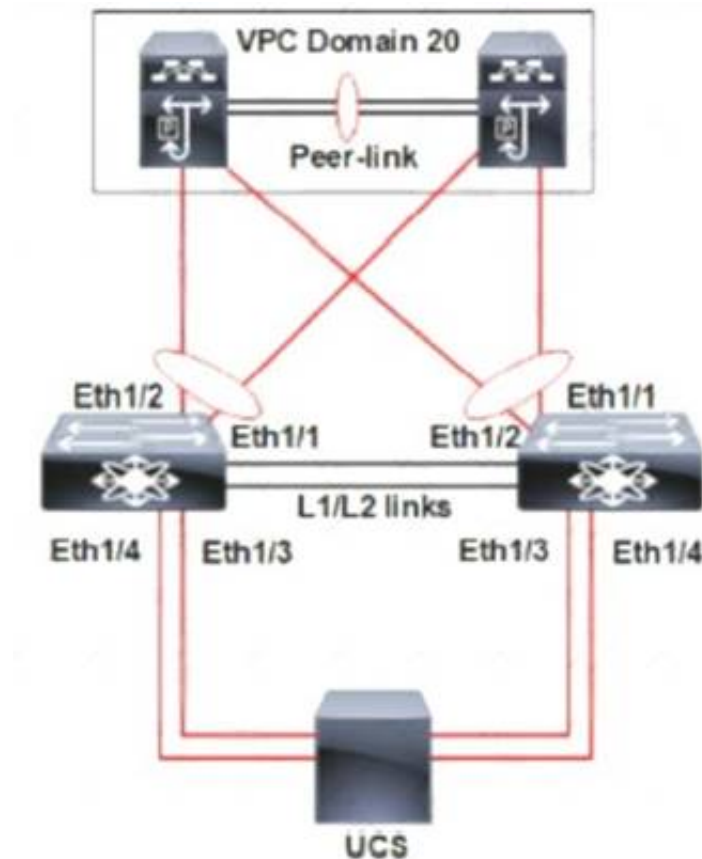
Explanation:

<https://www.cisco.com/c/en/us/products/collateral/cloud-systems-management/prime-data-center-networkmanag>

https://www.cisco.com/c/en/us/td/docs/switches/datacenter/sw/11_2_1/config_guide/lanfabric/b_dcnm_fabric_lan/template_usage.html

NEW QUESTION 2

Refer to the exhibit.



A pair of Cisco Nexus switches form a vPC. A new chassis s added to the pre-existing Cisco UCS domain. A new chassis must be discovered, and all links from the chassis to the LAN network must be established. Which set of actions accomplishes these requirements?

- ☐ Set the chassis discovery policy action to four links.
Configure Eth1/3 and Eth1/4 as server ports.
Acknowledge the chassis.
- ☒ Set the chassis discovery policy action to four links.
Configure Eth1/1 and Eth1/2 as uplink Fibre Channel ports.
Set the link group preference to None.
- ☐ Set the chassis discovery policy action to one link
Configure Eth1/1 and Eth1/2 as uplink Ethernet ports.
Set the link group preference to Port Channel.
- ☐ Set the chassis discovery policy action to one link
Configure Eth1/3 and Eth1/4 as server ports.
Acknowledge the chassis.

- A. Option A
- B. Option B
- C. Option C
- D. Option D

Answer: C

NEW QUESTION 3

An engineer is implementing an import operation in Cisco UCS Manager. What is the impact of performing this operation?

- A. A configuration can be imported from a higher release to a lower release.
- B. Information can be modified on the management plane only.
- C. Only a configuration file that was exported from the same Cisco UCS Manager can be imported.
- D. An import operation can be scheduled.

Answer: B

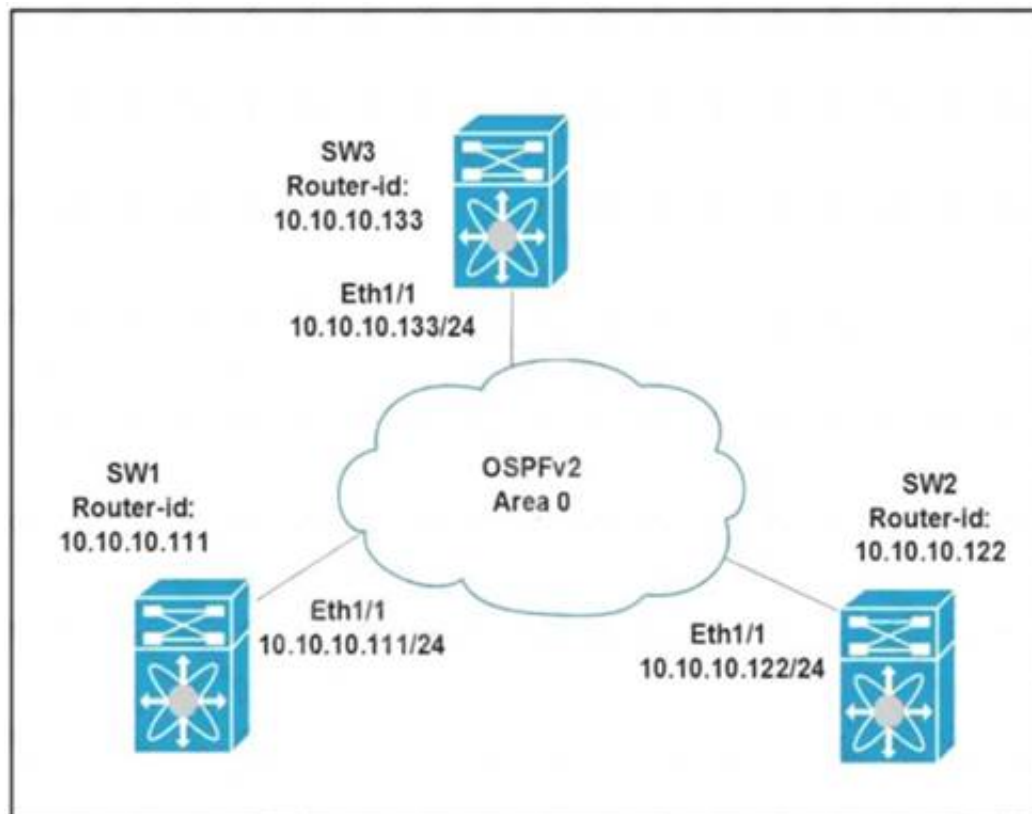
Explanation:

The import function is available for all configuration, system configuration, and logical configuration files. You can perform an import while the system is up and running. An import operation modifies information on the management plane only. Some modifications caused by an import operation, such as a change to a vNIC assigned to a server, can cause a server reboot or other operations that disrupt traffic.

https://www.cisco.com/en/US/docs/unified_computing/ucs/sw/gui/config/guide/141/UCSM_GUI_Configuration

NEW QUESTION 4

Refer to the exhibit.



All switches are configured with the default OSPF priority. Which configuration should be applied to ensure that the SW2 Cisco Nexus switch controls the LSA floods and advertises the network to the remaining nodes in the OSPFv2 area?

- A. SW2# configure terminal SW2 (config)# interface ethernet 1/1 SW2 (config-if)# ip ospf priority 255
- B. SW2# configure terminal SW2 (config)# interface ethernet 1/1 SW2 (config-if)# ip ospf priority 1
- C. SW2# configure terminal SW2 (config)# router ospf 1 SW2 (config-router)# router-id 10.10.10.22
- D. SW2# configure terminal SW2 (config)# interface ethernet 1/1 SW2 (config-if)# ip ospf priority 0

Answer: A

Explanation:

Priority in OSPF is mainly used to influence/determine a designated router/backup designated router for a network. By default, the priority is 1 on all routers. A router with a high priority will always win the DR/BDR election process.

NEW QUESTION 5

A network administrator is creating a custom Django self-service portal that runs on a Linux server to automate the creation of new VLANs on Cisco UCS Manager. Which feature must be installed and configured on the server?

- A. Cisco ucs Powertool Suite
- B. Cisco DNA Center API
- C. Cisco AppDynamics
- D. Cisco UCS Python SDK

Answer: C

NEW QUESTION 6

Which statement about the MAC address that the FCoE Initialization Protocol chooses for use by an E-Node in an FCoE implementation is true?

- A. The FCoE Initialization Protocol uses the burned-in MAC address of the converged network adapter for all FCoE operations.
- B. The FCoE Initialization protocol uses a 24-bit FC-MAP and concatenates a 24-bit Fibre Channel ID to create a fabric-provided MAC address.
- C. The FCoE Initialization Protocol uses 01.00.0C as the first 24 bits of the MAC address and appends a 24-bit Fibre Channel ID to derive a full 48-bit FCoE MAC address.
- D. FCoE does not use a MAC address.
- E. The FCoE Initialization Protocol is used to acquire a Fibre Channel ID, and the address is used for all FCoE communications in the same way as Fibre Channel Protocol.

Answer: B

Explanation:

https://www.cisco.com/c/en/us/td/docs/solutions/Enterprise/Data_Center/UF_FCoE_final.html#wp1154912

NEW QUESTION 7

An engineer configures port security on a Cisco MDS 9000 Series Switch. The MDS switch configuration must meet these requirements

- The switch must inmate the VSAN 4 port security database despite any conflicts.

- > New devices must be statically added to the switch.
- > Configuration changes for VSAN 4 must be applied throughout the fabric with any lodes on the fabric released

Which configuration set meets these requirements?

- ☐ port-security activate vsan 4
no port-security auto-learn vsan 4
port-security allocate
port-security commit vsan 4
- ☒ port-security activate vsan 4
port-security manual-learn vsan 4
port-security allocate
port-security commit
- ☐ port-security activate vsan 4 force
port-security auto-learn vsan 4
port-security distribute
port-security commit
- ☐ port-security activate vsan 4 force
no port-security auto-learn vsan 4
port-security distribute
port-security commit vsan 4

- A. Option A
- B. Option B
- C. Option C
- D. Option D

Answer: D

NEW QUESTION 8

A network engineer must SPAN only the ingress traffic of a Cisco MDS 9000 series switch from interface fc 1/23 to interface fc 1/24. Which two configuration must be applied to complete this task? (Choose two)



- A. Option A
- B. Option B
- C. Option C
- D. Option D

Answer: AC

NEW QUESTION 9

A storage array must be connected to port ethernet1/10 on a Cisco MDS 9000 Series Switch. In addition, the array must connect using the FCoE protocol and be single-homed. Which configuration meets these requirements?

- ☒ **vlan database**
vlan 101 fcoe
vsan 101 enable
interface vfc 10 vsan 101
- interface vfc 10**
switchport mode fcoe
switchport access vlan 101
bind interface ethernet1/10
- ☒ **vlan database**
vlan 101 vsan
vsan 101 fcoe
vsan 101 interface vfc 10
- interface ethernet1/10**
switchport mode trunk
bind interface vfc 10
fcoe vsan 101
- ☐ **vsan database**
vlan 101
vsan 101
fcoe vsan 101 interface vfc 10
- interface 1/10**
switchport mode e
fcoe vfc 10
- ☐ **interface vfc 10**
switchport mode f
bind interface ethernet 1/10
- vsan database**
vsan 101
vlan 101
fcoe vsan 101
vsan 101 interface vfc 10

- A. Option A
B. Option B
C. Option C
D. Option D

Answer: D

NEW QUESTION 10

A storage administrator notices an increasing number of storage targets that unexpectedly reach capacity, causing periodic service interruptions. The administrator must now create and submit a daily report of the environment that shows the status of the storage targets with the highest capacities. Which solution provides this information?

- A. Nagios Core with OpManager
B. Cisco DCNM with SAN Insight
C. SolarWinds with Slow Drain Analysis
D. Cisco Intersight with Slow Drain Analysis

Answer: D

NEW QUESTION 10

What is required for using puppet in a Cisco NX-OS environment?

- A. Open Agent Container
B. XML management interface
C. NX-API
D. OpenNP

Answer: A

NEW QUESTION 15

A network engineer plans to upgrade the firmware of a Cisco UCS B-Series chassis by using the Auto Install feature. Which component is upgraded during the infrastructure firmware upgrade stage?

- A. Cisco IMC
B. Adapter
C. I/O module
D. BIOS

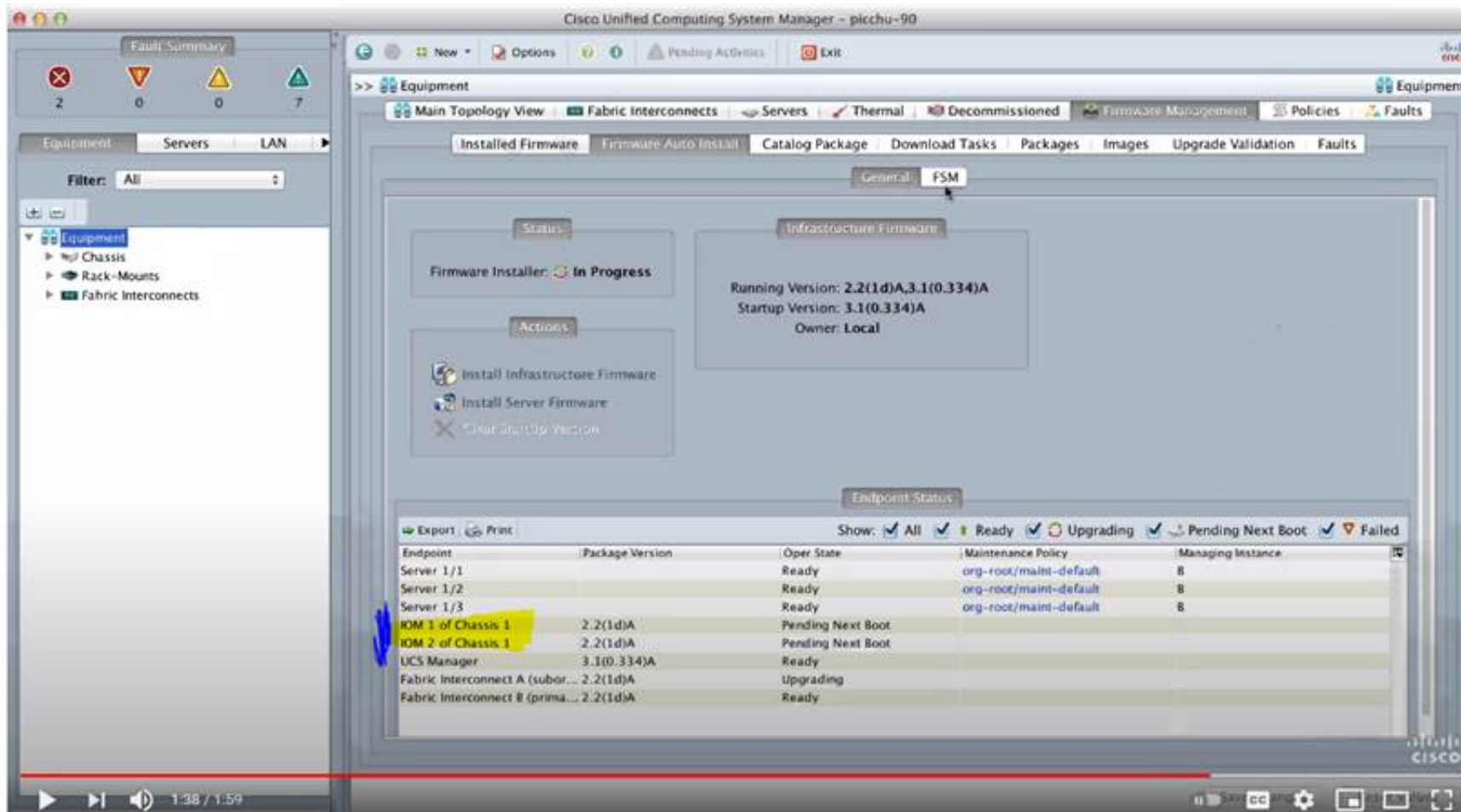
Answer: C

Explanation:

https://www.cisco.com/c/en/us/td/docs/unified_computing/ucs/ucs-manager/GUI-User-Guides/Firmware-Mgmt/ <https://www.youtube.com/watch?v=g-4OgYigvRI>

Direct Upgrade After Auto Install

During Auto Install, the startup version of the default infrastructure pack is configured. To **successfully complete a direct upgrade or activation of Cisco UCS Manager, Fabric Interconnects, and IOMs after Auto Install**, ensure that the startup version is cleared before starting direct upgrade or activation. If the startup version of the default infrastructure pack is configured, you cannot directly upgrade or activate Cisco UCS Manager, Fabric Interconnects, and IOMs. , provides detailed steps for clearing the startup version.



NEW QUESTION 17

Which two protocols are used by the NFSv4 protocol? (Choose two.)

- A. FCP
- B. TCP
- C. UDP
- D. Ethernet
- E. IP

Answer: BE

NEW QUESTION 22

An engineer must configure a Cisco UCS blade system that is managed by Cisco UCS Manager. All four connected interfaces between the blade system and the fabric interconnects must be used. Additionally, the connectivity must tolerate any link failure between the I/O module and the fabric interconnects. Which action accomplishes these requirements?

- A. Configure port aggregation with LACP policy set to default
- B. Configure Firmware Auto Sync Server policy to Auto Acknowledge
- C. Configure Link Group Preference to Port Channel.
- D. Configure chassis/FEX discovery pokey action to four links

Answer: D

NEW QUESTION 27

Refer to the exhibit.

LAN / Traffic Monitoring Sessions / Fabric A / Monitor Session test-span

General Faults Events

Actions	Properties
Set Destination	Name : test-span
Clear Destination	Admin State : <input checked="" type="radio"/> Enabled <input type="radio"/> Disabled
Delete	Destination : sys/switch-A/slot-1/switch-ether/port-17
	Admin Speed : <input type="radio"/> 1 Gbps <input checked="" type="radio"/> 10 Gbps <input type="radio"/> 40 Gbps
	Operational State : Down
	Operational State Reason : No Sources Configured
	Configuration Success : Yes
	Configuration Failure Reason :

Sources

An engineer must monitor all LAN traffic on Fabric A from a blade server. Which source should be configured in the test-span monitor session to complete this task?

- A. all vHBAs from the service profile that correspond to this server
- B. all uplink FCoE ports
- C. all uplink Ethernet ports
- D. all vNICs from the service profile that correspond to this server

Answer: D

Explanation:

https://www.cisco.com/en/US/docs/unified_computing/ucs/sw/gui/config/guide/141/UCSM_GUI_Configuration

Guidelines and Recommendations for Traffic Monitoring

When configuring or activating traffic monitoring, consider the following guidelines:

- You can create and store up to 16 traffic monitoring sessions, but only two can be active at the same time.
- A traffic monitoring session is disabled by default when created. To begin monitoring traffic, you must activate the session.
- To monitor traffic from a server, add all vNICs from the service profile corresponding to the server.
- To monitor traffic from a VM, you must first determine the identity of the dynamic vNIC assigned to the VM. Follow the procedure in to find the vNIC and view its identity properties, then add the vNIC as a source for the monitoring session. If you later move the VM using VMotion, a new dynamic vNIC is assigned and you must reconfigure the monitoring source.

Viewing Dynamic vNIC Properties in a VM

- You can monitor Fibre Channel traffic using either a Fibre Channel traffic analyzer or an Ethernet traffic analyzer. When Fibre Channel traffic is monitored using an Ethernet traffic monitoring session, with an Ethernet destination port, the destination traffic will be FCoE.
- Because a traffic monitoring destination is a single physical port, a traffic monitoring session can monitor only a single fabric. To monitor uninterrupted vNIC traffic across a fabric failover, you must create two sessions—one per fabric—and connect two analyzers. Add the vNIC as the traffic source for both sessions.
- All traffic sources must be located within the same switch as the destination port.
- A port configured as a destination port cannot also be configured as a source port.
- A member port of a port channel cannot be configured individually as a source. If the port channel is configured as a source, all member ports are source ports.

NEW QUESTION 31

An engineer is implementing the Cisco ACI fabric and wants to reduce the amount of TCAM resources consumed by the fabric. The engineer also needs to ensure that all EPGs in a VRF consume the same services. Which action should be taken to meet these requirements?

- A. Configure a single contract provided and consumed in all EPGs
- B. Configure preferred groups in the VRF for all EPGs
- C. Implement an unenforced VRF
- D. Implement vzAny feature

Answer: A

NEW QUESTION 32

An engineer must shut down the Ethernet 1/2 interface when the Ethernet 4/5 interface state is down. Drag and drop the CLI commands from the bottom onto the blanks in the exhibit to implement this EEM. Not all commands are used.

```
switch# configure terminal
switch(config)# track 1 
switch(config-track)# end

switch(config)# event manager applet track_4_5_down
switch(config-applet)# event track 1 state down
switch(config-applet)# action 1 syslog msg EEM applet
track_4_5_down shutting down port eth1/2 due to eth4/5
being down
switch(config-applet)# action 2 cli conf term
switch(config-applet)# action 3 cli 
switch(config-applet)# action 4 cli 
switch(config-applet)# end
```


- A. Mastered
- B. Not Mastered

Answer: A

Explanation:

Text Description automatically generated

NEW QUESTION 34

Refer to the exhibit.

```
Enter the configuration method. (console/gui) ? console

Enter the setup mode; setup newly or restore from backup.
(setup/restore) ? restore

NOTE:
  To configure Fabric interconnect using a backup file on
a remote server, you will need to setup management
interface.
  The management interface will be re-configured (if
necessary), based on information stored in the backup file.

Continue to restore this Fabric interconnect from a backup
file (yes/no) ? yes

Physical Switch Mgmt0 IPv4 address : 192.168.10.10
Physical Switch Mgmt0 IPv4 netmask : 255.255.255.0
IPv4 address of the default gateway : 192.168.10.1
Enter the protocol to get backup file (scp/ftp/tftp/sftp)
? scp
Enter the IP address of backup server: 20.10.20.10
Enter fully qualified backup file name: Backup.bak
Enter user ID: user
Enter password:
  Retrieved backup configuration file.
Configuration file - Ok
```

Which type of backup is required to restore a Cisco UCS configuration?

- A. system configuration
- B. all configuration
- C. logical configuration
- D. full state

Answer: A

Explanation:

https://www.cisco.com/c/en/us/td/docs/unified_computing/ucs/sw/cli/config/guide/1-0-2/b_CLI_Config_Guide_

The following example restores a system configuration from the Backup.bak file, which was retrieved from the 20.10.20.10 backup server using FTP:

```
Enter the configuration method. (console/gui) ? console

Enter the setup mode; setup newly or restore from backup. (setup/restore) ? restore

NOTE:
  To configure Fabric interconnect using a backup file on a remote server,
  you will need to setup management interface.
  The management interface will be re-configured (if necessary),
  based on information stored in the backup file.

Continue to restore this Fabric interconnect from a backup file (yes/no) ? yes

Physical Switch Mgmt0 IPv4 address : 192.168.10.10

Physical Switch Mgmt0 IPv4 netmask : 255.255.255.0

IPv4 address of the default gateway : 192.168.10.1

Enter the protocol to get backup file (scp/ftp/tftp/sftp) ? scp
Enter the IP address of backup server: 20.10.20.10
Enter fully qualified backup file name: Backup.bak
Enter user ID: user
Enter password:
Retrieved backup configuration file.
Configuration file - Ok
```

```
Cisco UCS 6100 Series Fabric Interconnect
UCS-A login:
```

NEW QUESTION 37

Which virtual MAC address is the default for HSRP version 2 group 10?

- A. 0000.5E00.0110
- B. 0000.0C9F.F00A
- C. 3716.1350.1C0A
- D. 0000.0C9F.F010

Answer: B

Explanation:

[https://www.cisco.com/c/en/us/td/docs/ios-xml/ios/ipapp_fhrp/configuration/xr-3s/fhrp-xr-3s-book/fhrp-hsrp-v2.h](https://www.cisco.com/c/en/us/td/docs/ios-xml/ios/ipapp_fhrp/configuration/xr-3s/fhrp-xr-3s-book/fhrp-hsrp-v2.html)

NEW QUESTION 39

An engineer deploys a new Cisco Nexus 5000 Series Switch in an existing environment with strict security policies. The new device should meet these requirements:

- > Secure end-user ports with minimum configuration effort.
- > Log security breaches and require manual recovery.
- > Retain the switch configuration if the device restarts.

Which configuration must be used?

- A.

```
switchport port-security
switchport port-security max 1
switchport port-security violation shutdown
```
- B.

```
switchport port-security
switchport port-security violation shutdown
switchport port-security mac-address dynamic
```
- C.

```
switchport port-security
switchport port-security max 1
switchport port-security mac-address sticky
```
- D.

```
switchport port-security
switchport port-security violation restrict
switchport port-security mac-address sticky
```

Answer: C

NEW QUESTION 41

Which two statements describe modifying Cisco UCS user accounts? (Choose two.)

- A. Disabling a user account maintains all of the data in the Cisco UCS Fabric Interconnect.
- B. The admin account is used only to log on by using SSH.
- C. The password of the user account must contain a minimum of 10 characters.
- D. Local user accounts override the same account on a remote authentication server, such as TACACS, RADIUS, or LDAP.
- E. The password of the user account expires in 30 days.

Answer: AD

Explanation:

https://www.cisco.com/c/en/us/td/docs/unified_computing/ucs/ucs-manager/GUI-User-Guides/Admin-Managem

NEW QUESTION 45

An engineer must configure a named VSAN when the fabric interconnect is in Fibre Channel switch mode. The VSAN must meet these requirements:

- Named VSAN must be called "VSAN 10".
- VSAN ID must be 10.
- FCoE ID must be 20.
- VSAN 10 must be attached to port 2 in slot 1.

Which command set configures a VSAN when the fabric interconnect is in Fibre Channel switch mode?

- ☒ **UCS-A# scope fc-storage**
UCS-A/fc-storage# create vsan VSAN10 10 20
UCS-A /fc-storage/vsan # create member-port fcoe a 1 2
UCS-A /fc-storage/vsan/member-port* # commit-buffer
- ☐ **UCS-A# scope fc-traffic-mon**
UCS-A/fc-storage# create vsan VSAN10 20 10
UCS-A /fc-storage/vsan # create member-port fcoe a 2 1
UCS-A /fc-storage/vsan/member-port* # commit-buffer
- ☐ **UCS-A# scope eth-storage**
UCS-A/fc-storage# create vsan VSAN10 10 20
UCS-A /fc-storage/vsan # create member-port fcoe a 2 1
UCS-A /fc-storage/vsan/member-port* # commit-buffer
- ☐ **UCS-A# scope fc-uplink**
UCS-A/fc-storage# create vsan VSAN10 20 10
UCS-A /fc-storage/vsan # create member-port fcoe a 1 2
UCS-A /fc-storage/vsan/member-port* # commit-buffer

- A. Option A
- B. Option B
- C. Option C
- D. Option D

Answer: A

NEW QUESTION 49

Refer to the exhibit.

```
Nexus# show vpc peer-keepalive | i Keepalive
--Keepalive interval : 1000 msec
--Keepalive timeout : 5 seconds
--Keepalive hold timeout : 3 seconds
--Keepalive vrf : management
--Keepalive udp port : 3200
--Keepalive tos : 192

Nexus# ethanalyzer local interface mgmt limit-captured-frames 1000

Capturing on mgmt0
2019-06-15 12:01:51.242597 192.168.254.11 -> 192.168.254.3 ICMP Echo (ping) request
2019-06-15 12:01:51.242860 192.168.254.3 -> 192.168.254.11 ICMP Echo (ping) reply
2019-06-15 11:50:15.975474 192.168.254.1 -> 192.168.254.3 TCP 47540 > bootps [SYN] Seq=0 Win=1024 Len=0 MSS=1460
2019-06-15 11:50:15.975547 192.168.254.3 -> 192.168.254.1 TCP 29 > 47540 [RST, A CK] Seq=1 Ack=1 Win=0 Len=0
2019-06-15 11:50:15.975564 192.168.254.1 -> 192.168.254.3 TCP 47540 > 44 [SYN] Seq=0 Win=1024 Len=0 MSS=1460
2019-06-15 11:50:15.975924 192.168.254.1 -> 192.168.254.3 TCP 47540 > discard [SYN] Seq=0 Win=1024 Len=0 MSS=1460
2019-06-15 11:50:15.976027 192.168.254.1 -> 192.168.254.3 TCP 47540 > 97 [SYN] Seq=0 Win=1024 Len=0 MSS=1460
2019-06-15 11:50:15.976381 192.168.254.1 -> 192.168.254.3 TCP 47540 > 35 [SYN] Seq=0 Win=1024 Len=0 MSS=1460
2019-06-15 11:50:16.661845 192.168.254.3 -> 192.168.254.4 UDP Source port: 3200 Destination port: 3200
2019-06-15 11:50:16.761147 00:8e:73:a2:41:13 -> 01:80:c2:00:00:00 STP Conf. Root = 8192/10/ec:e1:a9:df:6c:80 Cost = 22 Port = 0x8013
2019-06-15 11:50:16.853248 192.168.254.4 -> 192.168.254.3 UDP Source port: 3200 Destination port: 3200
2019-06-15 11:50:17.326253 192.168.254.1 -> 192.168.254.3 SSH Encrypted request packet len=52
2019-06-15 11:50:17.327313 192.168.254.3 -> 192.168.254.1 SSH Encrypted response packet len=1348
2019-06-15 11:50:17.377246 192.168.254.4 -> 239.255.70.83 UDP Source port: 7546 Destination port: 7546
2019-06-15 11:50:17.552215 192.168.254.1 -> 192.168.254.3 TCP 14139 > ssh [ACK] Seq=365 Ack=11277 Win=63546 Len=0
2019-06-15 11:50:17.661764 192.168.254.3 -> 192.168.254.4 UDP Source port: 3200 Destination port: 3200
2019-06-15 11:50:17.653242 192.168.254.4 -> 192.168.254.3 UDP Source port: 3200 Destination port: 3200
2019-06-15 11:50:17.872637 8c:60:4f:aa:c2:e1 -> 01:80:e7:00:00:0e LLDP Chassis : d = 8c:60:41:aa:c2:e1 Port Id = mgmt0 TTL = 120
2019-06-15 11:50:08.173056 192.168.256.3 -> 192.168.254.2 NTP NTP client
2019-06-15 11:50:08.173256 192.168.256.2 -> 192.168.254.3 NTP NTP server
```

A flapping link issue has been reported on the vPC keepalive link. A packet capture has been activated on the Cisco Nexus switch. What is the destination IP address of the vPC keepalive packets that are sent by the switch?

- A. 192.168.254.4
- B. 239.255.70.83
- C. 192.168.254.1
- D. 192.168.254.2

Answer: A

Explanation:

<https://www.cisco.com/c/en/us/td/docs/switches/datacenter/nexus3000/sw/interfaces/92x/b-cisco-nexus-3000-nx>

NEW QUESTION 50

An engineer must configure SAN connectivity in Cisco UCS manager. The requirement is to specify the WWPN of the storage array and set the zoning type to single initiator multiple targets. The engineer must also configure interrupt handling and queues of the vHBA interface. Which two Cisco UCS policies should be used to configure the settings? (Choose two.)

- A. storage connection policy
- B. SAN connectivity policy
- C. vHBA policy
- D. Fibre Channel adaptor policy
- E. boot policy

Answer: AD

NEW QUESTION 53

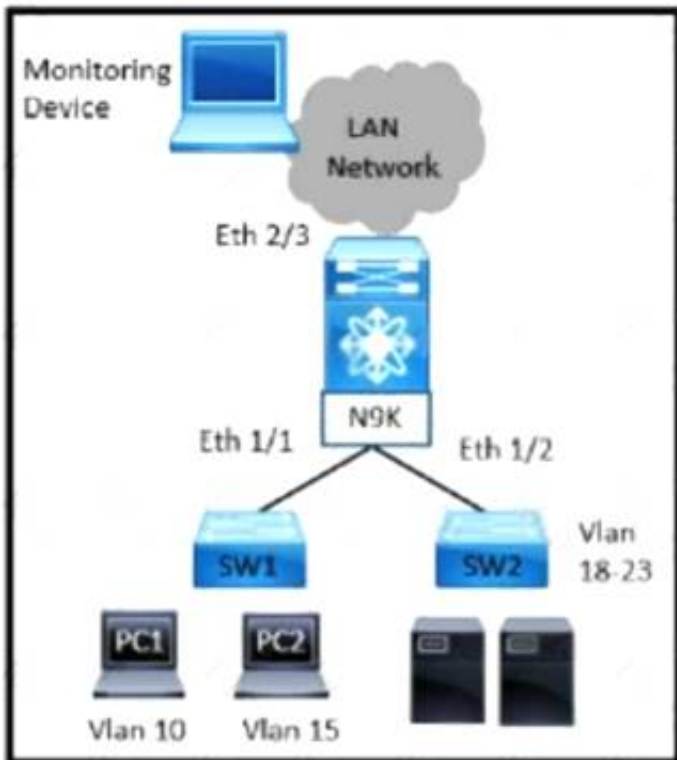
An engineer must build a lab replica of a Cisco UCS production environment. The file must be imported into a new Cisco UCS cluster using a Cisco UCS manager GUI. The file must be in XML format and be exported from Cisco UCS Manager using encrypted method. Which two configuration parameters should be selected to meet these requirements?. (Choose two.)

- A. Type: Logical configuration
- B. Protocol SCP
- C. Type Full state
- D. Protocol TFTP
- E. Type All configuration

Answer: BE

NEW QUESTION 58

Refer to the exhibit



A network administrator experiences these issues with the network:

- > PC1 is experiencing a buffering problem for video applications
- > The servers that are connected to SW2 are experiencing packet drops when they connect to the Internet

The engineer wants to configure the required traffic capture to investigate the issue further Which configuration must be implemented to monitor the traffic?

- ☐ N9K(config)# monitor session 5 rx
 N9K(config)# monitor session 5 tx
 N9K(config-monitor)# description Span_session_5
 N9K(config-monitor)# source interface ethernet 1/1
 N9K(config-monitor)# source interface ethernet 1/2
 N9K(config-monitor)# destination interface ethernet 2/3
- ☐ N9K(config)# monitor session 5 tx
 N9K(config-monitor)# description Span_session_5
 N9K(config-monitor)# source interface ethernet 1/1
 N9K(config-monitor)# source interface ethernet 1/2
 N9K(config-monitor)# destination interface ethernet 2/3
- ☐ N9K(config)# monitor session 5 tx
 N9K(config-monitor)# description Span_session_5
 N9K(config-monitor)# source vlan 10-15 rx
 N9K(config-monitor)# source interface ethernet 1/2
 N9K(config-monitor)# destination interface ethernet 2/3
- ☒ N9K(config)# monitor session 5 rx
 N9K(config-monitor)# description Span_session_5
 N9K(config-monitor)# source vlan 10 rx
 N9K(config-monitor)# source interface ethernet 1/2
 N9K(config-monitor)# destination interface ethernet 2/3

- A. Option A
- B. Option B
- C. Option C
- D. Option D

Answer: D

NEW QUESTION 60

A customer deploys a media server to distribute streaming videos to network clients. The requirement is to allow the video feed to reach only requesting clients. The shared trees must not propagate the video feed if no clients from that tree request it. To reduce configuration touchpoints, the solution must support the automatic discovery and announcement of RP-set information. Each router in the network is responsible for selecting the RP. Which configuration set meets these requirements?

A)

```

router(config-if)# ip pim bidir-enable
router(config)# ip pim ssm default
router(config)# ip igmp version 3
  
```

B)


```
router(config-if)# ip pim dense-mode
router(config)# ip pim rp-address 1.1.1.1
router(config)# ip pim rp listener
```

C)

```
router(config-if)# ip pim sparse mode
router(config)# ip pim bsr-candidate Lo0
router(config)# ip pim rp-candidate Lo0
```

D)

```
router(config-if)# ip pim sparse-sense mode
router(config)# ip pim auto-rp
router(config)# ip pim send-rp-announce
```

- A. Option A
- B. Option B
- C. Option C
- D. Option D

Answer: D

NEW QUESTION 62

An engineer needs to connect Cisco UCS Manager to an external storage array. Due to budget limitations, the engineer must connect a Cisco UCS manager directly to an FC storage port. Which two actions must be taken to complete this connection? (Choose two)

- A. Configure the fabric interconnect in FC switch mode
- B. Create a storage connection policy
- C. Set FC zoning to disabled when creating the VSAN
- D. Configure the fabric interconnect in end host mode
- E. Create the required VSAN in the SAN cloud

Answer: AC

NEW QUESTION 66

A network engineer must deploy a configuration backup policy to the Cisco UCS Manager. The file generated from this backup must have a snapshot of the entire system that should be used to restore the system during disaster recovery. The backup file must be transferred insecurely by using the TCP protocol. Which configuration backup settings meet these requirements?

- A. Type: All Configuration Protocol: SCP
- B. Type: Logical Configuration Protocol: SFTP
- C. Type: Full State Protocol: FTP
- D. Type: System Configuration Protocol: TFTP

Answer: C

NEW QUESTION 69

When a strict CoPP policy is implemented, which statement describes an event during which packets are dropped?

- A. Fifteen SSH sessions remain connected to the switch.
- B. A large system image is copied to a switch by using the default VRF.
- C. A ping sweep is performed on a network that is connected through a switch.
- D. A web server that is connected to a switch is affected by a DDoS attack.

Answer: B

Explanation:

A large image upload is more probable to generate that level of traffic.

15 SSH session would mean an average of 200pps per session, and they simply mention that the session remain connected, if there are no inputs in them they have 0pps and even a full config push would probably not require 200 packets total.

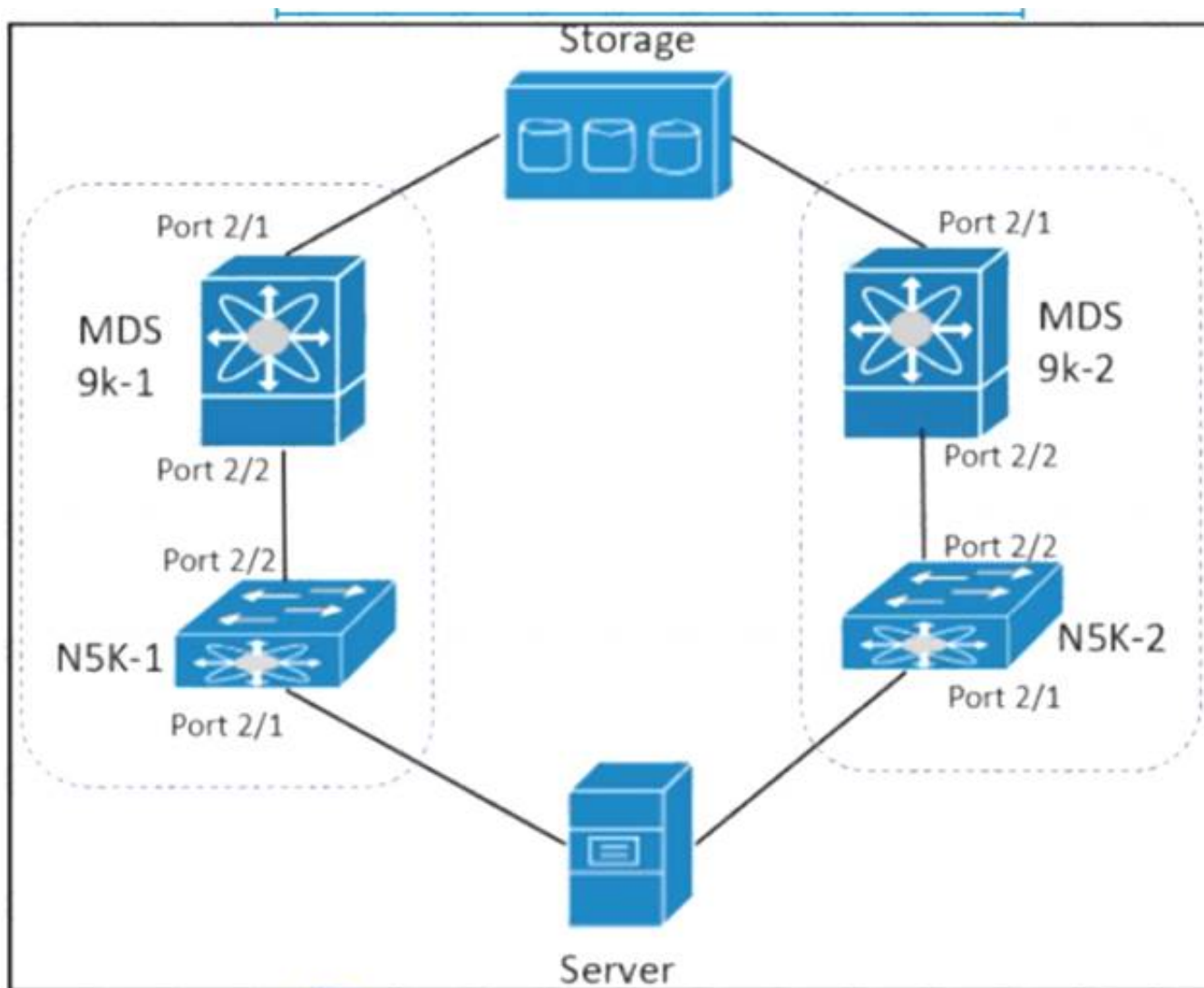
```
class copp-system-p-class-management set cos 2
```

```
police cir 3000 pps bc 32 packets conform transmit violate drop
```

https://www.cisco.com/c/en/us/td/docs/switches/datacenter/nexus9000/sw/6-x/security/configuration/guide/b_Cisco_Nexus_9000_Series_NX-OS_Security_Configuration_Guide/b_Cisco_Nexus_9000_Series_NXOS_Security_Configuration_Guide_chapter_010001.html

NEW QUESTION 70

Refer to the exhibit.



The server is sending traffic to the storage server using Fiber Channel protocol. The requirement is for the N5K-1 to forward traffic to MDS9k-1. Drag and drop the configuration steps from the right to complete the configuration for N5K-1 on the left. Not all configuration steps are used.

```

N5K-1# configuration terminal
N5K-1#(config) # 
N5K-1#(config) # interface fc 2/2
N5K-1#(config-if) # 
N5K-1#(config-if) # no shutdown
N5K-1#(config) # 
N5K-1#(config-if) # 
N5K-1#(config-if) # no shutdown
        
```

interface fc 2/1

interface port 2/1

interface port 2/2

npv enable

switchport mode F

switchport mode NP

- A. Mastered
- B. Not Mastered

Answer: A

Explanation:

npv enable, switchport mode F, interface fc2/1, switchport mode NP

NEW QUESTION 71

An engineer must configure OSPF in the data center. The external routes have already been redistributed OSPF. The network must meet these criteria:

- * The data centre servers must reach services in the cloud and the services behind the redistributed routes.
 - * The exit point toward the internet should be propagated only when there is a dynamically learned default route from the upstream router.
- Which feature is required?

- A. Default-information originate
- B. Stubby area
- C. Totally stubby area
- D. Default-information originate always

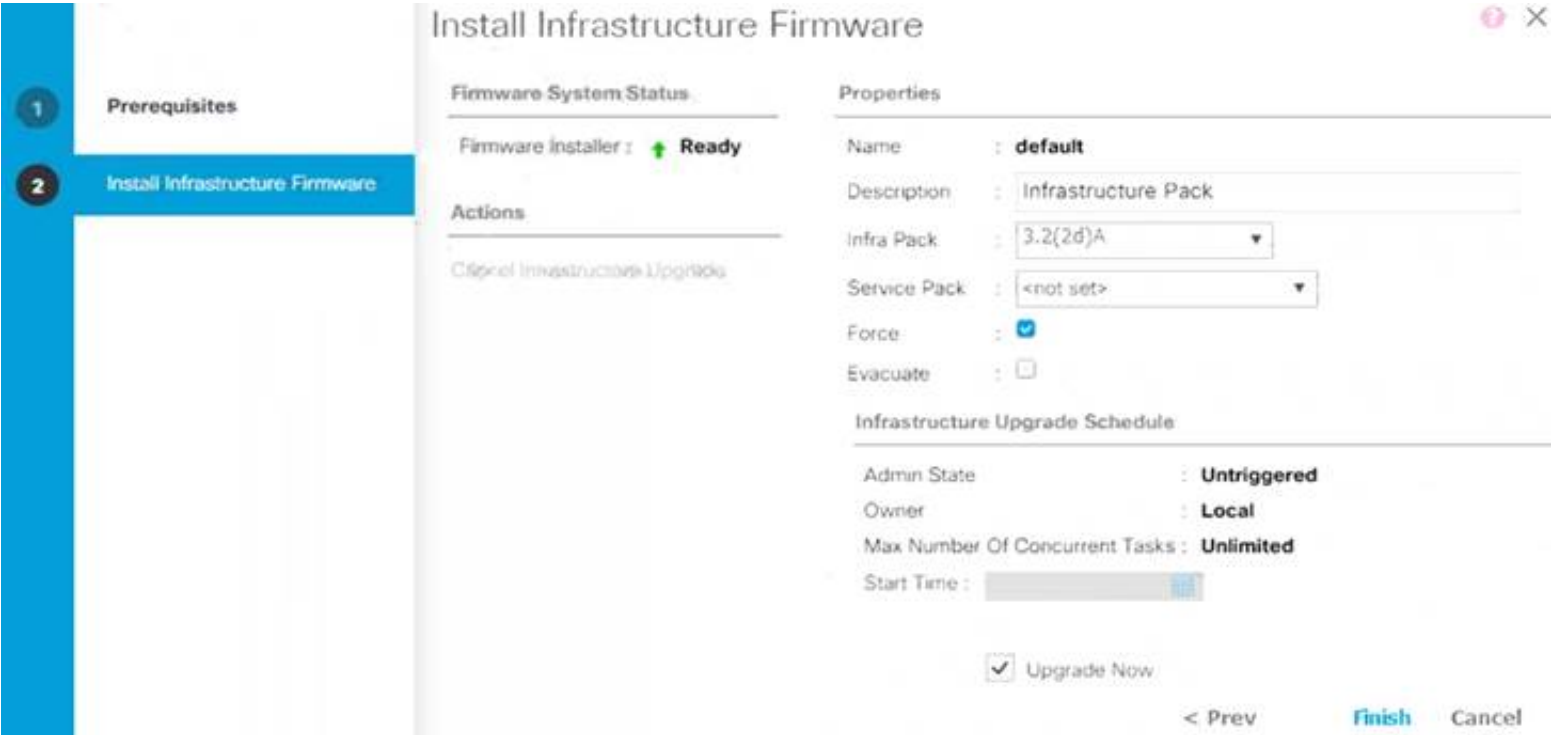
Answer: A

Explanation:

<https://learningnetwork.cisco.com/s/question/0D53i00000Kt544/defaultinformationoriginate-always>

NEW QUESTION 75

Refer to the exhibit.



Which two Cisco UCS components are upgraded as a result of the configuration? (Choose two.)

- A. adapters
- B. board controller
- C. IOMs
- D. BIOS
- E. Cisco UCS Manager

Answer: CE

Explanation:

https://www.cisco.com/c/en/us/td/docs/unified_computing/ucs/sw/firmware-mgmt/gui/2-2/b_GUI_Firmware_Management_22/b_GUI_Firmware_Management_22_chapter_0101.html

Infrastructure software bundle—This bundle is also called the A bundle. It contains the firmware images that the fabric interconnects, IO Modules, and Cisco UCS Manager require to function.

Board controller is a server component included in the server bundle not the infrastructure bundle Graphical user interface, text, application, letter Description automatically generated

Install Infrastructure Firmware

Install Infrastructure Firmware upgrades all infrastructure components in a Cisco UCS domain, including Cisco UCS Manager, and all fabric interconnects and I/O modules. All components are upgraded to the firmware version included in the selected Cisco UCS Infrastructure Software Bundle.

Install Infrastructure Firmware does not support a partial upgrade to only some infrastructure components in a Cisco UCS domain domain.

You can schedule an infrastructure upgrade for a specific time to accommodate a maintenance window. However, if an infrastructure upgrade is already in progress, you cannot schedule another infrastructure upgrade. You must wait until the current upgrade is complete before scheduling the next one.



Note

You can cancel an infrastructure firmware upgrade if it is scheduled to occur at a future time. However, you cannot cancel an infrastructure firmware upgrade after the upgrade has begun.

NEW QUESTION 77

Drag and drop the fields for configuring a full state backup file of the Cisco UCS Manager from the left onto the descriptions on the right.

hostname	location where the backup file id stored
protocol	full path to the backup configuration file
remote file	binary file that includes a snapshot of the entire system
type	settings used to transfer the file to the backup server

- A. Mastered
- B. Not Mastered

Answer: A

Explanation:

Diagram Description automatically generated

NEW QUESTION 80

An engineer must configure Cisco Nexus 9000 Series Switches for Cisco UCS Director integration. The configuration must enable automated onboarding of the switches as they come online. For security purposes, the switches must have the bare minimum of connection methods enabled. The connection protocol must allow authentication through credentials. Which protocol must be configured on the switches to allow automated onboarding?

- A. SNMP
- B. Telnet
- C. SSH
- D. HTTPS

Answer: C

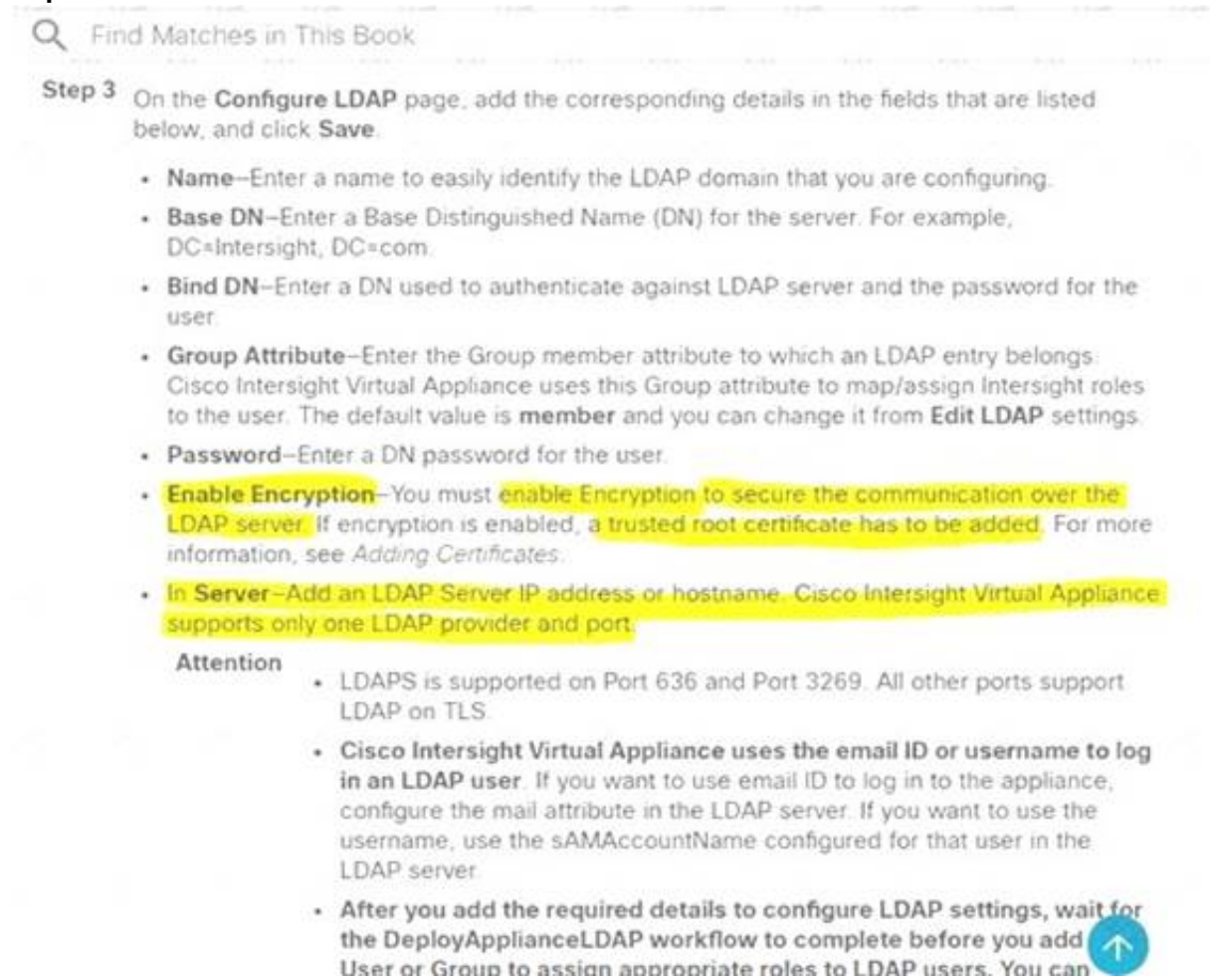
NEW QUESTION 83

An engineer is implementing Cisco Intersight in a secure environment. The environment must use LDAP directory service and ensure information integrity and confidentiality. Which two steps must be taken to implement the solution? (Choose two.)

- A. Enable Encryption for LDAP
- B. Add a self-signed LDAP certificate to Cisco Intersight.
- C. Enable Certificate Signing Request in Cisco Intersight.
- D. Add a trusted root LDAP certificate to Cisco Intersight
- E. Add a trusted OAuth token to Cisco Intersight

Answer: AD

Explanation:



The screenshot shows a search bar at the top with the text "Find Matches in This Book". Below it, a section titled "Step 3" contains the instruction: "On the **Configure LDAP** page, add the corresponding details in the fields that are listed below, and click **Save**." This is followed by a bulleted list of configuration steps: "Name", "Base DN", "Bind DN", "Group Attribute", "Password", "Enable Encryption", and "In Server". The "Enable Encryption" and "In Server" items are highlighted in yellow. Below the list, an "Attention" section contains three additional points: "LDAPS is supported on Port 636 and Port 3269", "Cisco Intersight Virtual Appliance uses the email ID or username to log in an LDAP user", and "After you add the required details to configure LDAP settings, wait for the DeployApplianceLDAP workflow to complete before you add User or Group to assign appropriate roles to LDAP users." A blue circular icon with an upward arrow is located at the bottom right of the screenshot.

https://www.cisco.com/c/en/us/td/docs/unified_computing/Intersight/b_Cisco_Intersight_Appliance_Getting_Started_Guide/b_Cisco_Intersight_Appliance_Install_and_Upgrade_Guide_chapter_0110.html

NEW QUESTION 88

An engineer needs to monitor ingress traffic that arrives at interface Ethernet 1/3 that belongs to a Cisco Nexus 5600 Series Switch. The traffic analyzer machine located at interface Ethernet 1/5 is already monitoring other production, and the traffic analyzer must not be impacted by the traffic captured from the interface Eth1/3. The operations team allocated a traffic budget for the new monitoring session of 1 Gbps to meet this requirement. Which set of commands configures the SPAN session?

- ☐ interface Ethernet 1/3
switchport monitor rate-limit 1G

monitor session 2
destination interface ethernet 1/5
source interface Eth 1/3
- ☐ interface Ethernet 1/3 rx
switchport mode SD
switchport monitor rate-limit 1G
monitor session2
destination interface ethernet 1/5
- ☐ interface Ethernet 1/3
monitor rate-limit 1G
destination interface ethernet 1/5
source interface rx

interface Ethernet 1/5
monitor session 2
destination interface tx
- ☐ interface Ethernet 1/3
monitor session 2
destination interface ethernet 1/5
source interface rx

interface Ethernet 1/5
monitor rate-limit 1G

- A. Option A
- B. Option B
- C. Option C
- D. Option D

Answer: A

Explanation:

Find Matches in This Book

	switch(config)# interface ethernet slot/port	Enters interface configuration mode for the specified Ethernet interface selected by the slot and port values.
Step 3	switch(config-if)# switchport monitor rate-limit 1G	Specifies that the rate limit is 1 Gbps.
Step 4	switch(config-if)# exit	Reverts to global configuration mode.

Example

This example shows how to limit the bandwidth on Ethernet interface 1/2 to 1 Gbps:

```
switch(config)# interface ethernet 1/2
switch(config-if)# switchport monitor rate-limit 1G
switch(config-if)#
```

Configuring Source Ports

Procedure

	Command or Action	Purpose
Step 1	switch# configure terminal	Enters global configuration mode.
Step 2	switch(config) # monitor session session-number	Enters monitor configuration mode for the specified monitoring session.
Step 3	switch(config-monitor) # source interface type slot/port [rx tx both]	Adds an Ethernet SPAN source port and specifies the traffic direction in which to duplicate packets. You can enter a range of Ethernet, Fibre Channel, or virtual Fibre Channel ports. You can specify the traffic direction to duplicate as ingress (Rx), egress (Tx), or both. By default, the direction is both.

https://www.cisco.com/c/en/us/td/docs/switches/datacenter/nexus5600/sw/system_management/7x/b_5600_System_Mgmt_Config_7x/configuring_span.html

NEW QUESTION 91

An engineer updated firmware on Fabric Interconnects and activates it. However, the endpoint fails to boot from the new firmware image. What is expected to occur in this case?

- A. The system defaults to the backup image version
- B. The system defaults to and boots into GOLD firmware image
- C. The system defaults to the GOLD firmware image
- D. The system defaults to and boots into kickstart image

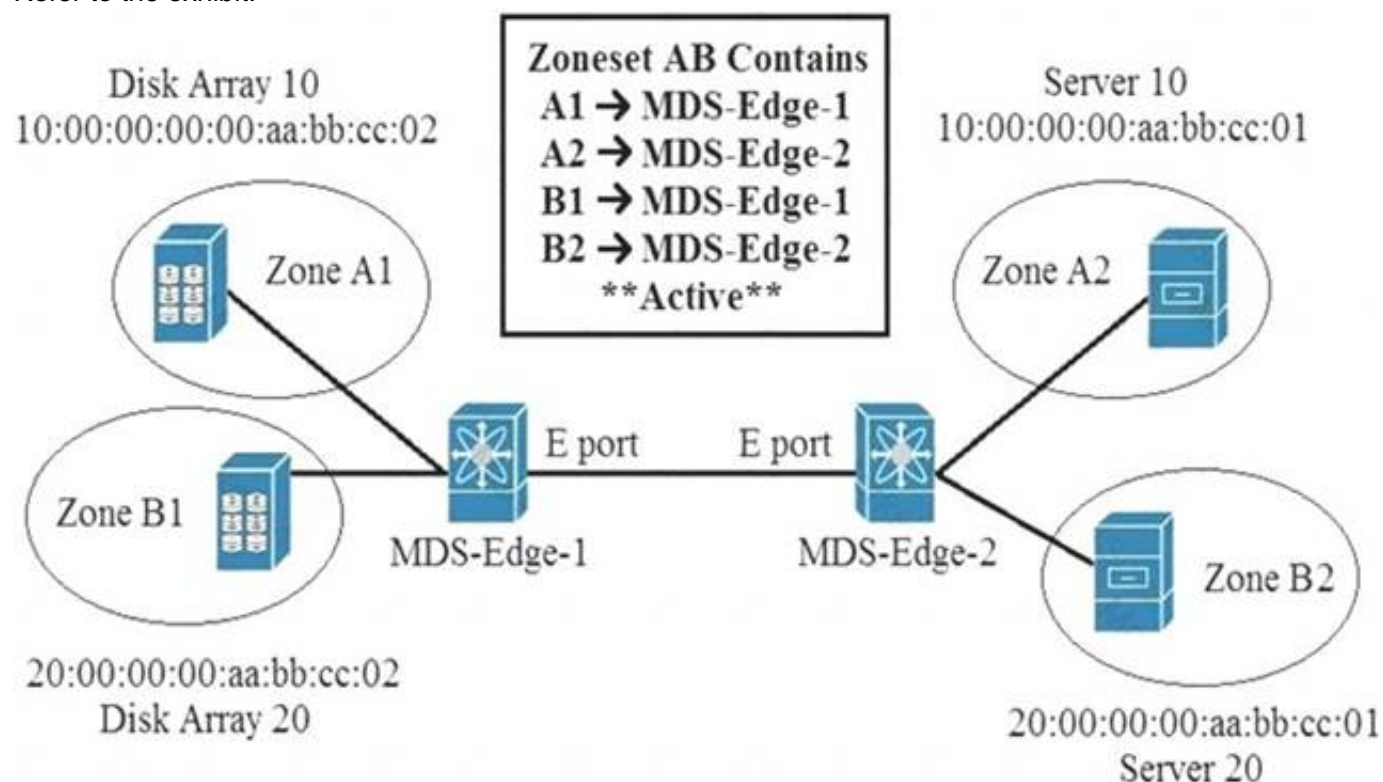
Answer: A

Explanation:

https://www.cisco.com/c/en/us/td/docs/unified_computing/ucs/ucs-manager/CLI-User-Guides/Firmware-Mgmt/4-0/b_UCSM_CLI_Firmware_Management_Guide_4-0/b_UCSM_CLI_Firmware_Management_Guide_4-0_chapter_011.html

NEW QUESTION 92

Refer to the exhibit.



An engineer is implementing zoning on two Cisco MDS switches. After the implementation is finished, E Ports that connect the two Cisco MDS switches becomes isolated. What is wrong with the implementation?

- A. E Ports on both MDS switches must be configured as F ports for the zoning to function.
- B. Zones are local to the MDS switch and name service must be used to activate the connection between E ports.
- C. Different zone set names must be configured on both MDS switches.
- D. Zones must have the same name on both MDS switches for the E ports to function.

Answer: D

Explanation:

When two switches in a fabric are merged using a TE or E port, these TE and E ports may become isolated when the active zone set databases are different between the two switches or fabrics." https://www.cisco.com/c/en/us/td/docs/switches/datacenter/mds9000/sw/6_2/configuration/guides/fabric/nxos/n

NEW QUESTION 95

What is required for using Ansible with HTTP/HTTPS protocol in a Cisco NX-OS environment?

- A. SSH
- B. Open Agent Container
- C. XML management interface
- D. NX-API

Answer: D

Explanation:

https://docs.ansible.com/ansible/2.5/modules/nxos_nxapi_module.html https://docs.ansible.com/ansible/latest/network/user_guide/platform_nxos.html

NEW QUESTION 100

An engineer must implement a Cisco UCS system at a customer site. One of the requirements is to implement SAN boot. The storage system maps the source WWPN to a unique LUN. Which method does Cisco recommend to configure the SAN boot?

- A. Create a SAN boot policy in which every initiator is mapped to the same target LUN.
- B. Define the vHBAs as bootable and leave the default values on the target definition.
- C. Define the vHBAs as bootable and leave the boot target definition empty.
- D. Create a SAN boot policy in which every initiator is mapped to a different target LUN.

Answer: A

Explanation:

While you have multiple zones consisting of FC vHBAs and storage target wwps for SAN Fabrics A and B, you are ultimately booting off of the same boot LUN. Multiple paths to get to the same boot device which correspond with the same LUN ID.
https://www.cisco.com/c/en/us/td/docs/unified_computing/ucs/ts/guide/UCSTroubleshooting/UCSTroubleshooting_chapter_0110.html#r_sanarrayconfigurationchecklist

NEW QUESTION 101

What is a benefit of using Cisco Tetration?

- A. It collects telemetry data from servers and then uses software sensors to analyze flow information.

- B. It collects near-real time data from servers and inventories the software packages that exist on servers.
- C. It collects policy compliance data and process details.
- D. It collects enforcement data from servers and collects interpacket variation.

Answer: A

NEW QUESTION 105

Refer to the exhibit.

```
OTV-Site1# show otv
OTV Overlay Information
Site Identifier 0000.0000.0111
Overlay interface Overlay200
VPN name: Overlay200
VPN state: UP
Extended vlans: 178 2500-2563 (Total:65)
Join interface(s): Eth1/2 (20.1.1.1)
Site vlan: 1999 (up)
AED-Capable: Yes
Capability: Unicast-Only
Is Adjacency Server: Yes
Adjacency Server(s): 20.1.1.1/20.2.1.1
```

A network engineer is setting up a multihomed OTV network. The first site has been set up with a primary and secondary adjacency server. Which configuration must be added on the remote OTV AEDs site?

- A. interface Overlay200otv join-interface Ethernet1/2 otv extend-vlan 178, 2500-2563otv use-adjacency-server 20.1.1.1 unicast-only
- B. interface Overlay200otv join-interface Ethernet1/2 otv extend-vlan 178, 2500-2563otv adjacency-server unicast-only
- C. interface Overlay200otv join-interface Ethernet1/2 otv extend-vlan 178, 2500-2563
- D. interface Overlay200otv join-interface Ethernet1/2 otv extend-vlan 178, 2500-2563otv use-adjacency-server 20.1.1.1 20.2.1.1 unicast-only

Answer: D

NEW QUESTION 107

An engineer must migrate a Cisco UCS C-Series server from Cisco SingleConnect to direct integration mode. The Cisco UCS Manager Rack Server Discovery Policy and Rack Management Connection Policy are set to immediate and Auto-Acknowledge. Which set of steps accomplishes this task?

- ☒ Disconnect the cables from the FEX.
Connect the cables to appliance ports on the fabric interconnect.
Reset the Cisco IMC of the server.
- ☐ Disconnect the cables from the FEX.
Connect the cables to server ports on the fabric interconnect.
Reset the Cisco IMC of the server.
- ☐ Disconnect the cables from the FEX.
Connect the cables to appliance ports on the fabric interconnect.
Reacknowledge the server.
- ☐ Disconnect the cables from the FEX.
Connect the cables to server ports on the fabric interconnect.
Reacknowledge the server.

- A. Option A
- B. Option B
- C. Option C
- D. Option D

Answer: D

NEW QUESTION 108

An engineer must create an EPG called "Test". The configuration request should succeed if the Tenant called "Tenant" and the application profile called "Test" exist. The firewall policy allows only the HTTP connectivity to APIC from the user's computer. Which action accomplishes this goal?

- ☒ Send <fvAEPg dn="uni/tn-Test/ap-Test/epg-Tenant" status="created"/> to APIC payload using HTTP PUT to the Cisco APIC.
- ☐ Send <fvAEPg dn="uni/tn-Test/ap-Test/epg-Tenant" status="created"/> to APIC payload using HTTP POST to the Cisco APIC.
- ☐ Send <fvAEPg dn="uni/tn-Tenant/ap-Test/epg-Test" status="created"/> to APIC payload using HTTP POST to the Cisco APIC.
- ☐ Send <fvAEPg dn="uni/tn-Tenant/epg-Test/ap-Test" status="created"/> to APIC payload using HTTP PUT to the Cisco APIC.

- A. Option A
- B. Option B
- C. Option C
- D. Option D

Answer: C

NEW QUESTION 111

Refer to the exhibit.

```
#!/bin/env python
from cli import *

[ ]

x= cli('show running-config | include address')
y= x.find('192.168.101.191/25')
z= x.find('192.168.101.192/25')
if y != -1:
    cli ('copy tftp://192.168.101.253/initdev1.cfg bootflash: vrf management')
    cli ('copy bootflash:initdev1.cfg scheduled-config')
if z != -1:
    cli ('copy tftp://192.168.101.253/initdev2.cfg bootflash: vrf management')
    cli ('copy bootflash:initdev2.cfg scheduled-config')
cli ('copy running-config startup-config')
```

Which information must be added to the script to complete the POAP operation on the Cisco Nexus 9000 Series Switch?

- ☒ API token d41d8cd98f00b40960045298ecf8427e of the Cisco APIC.
- ☐ MD5SUM 41d8cd98f00b204e9800998ecf8427e of the Python code.
- ☐ API token d41d8cd98f00b77986331998ecf8427e of the Cisco Nexus 9000 Series Switch.
- ☐ MD5SUM d41d8cd98f00b20449800998ecf8427e of the script file.

- A. Option A
- B. Option B
- C. Option C
- D. Option D

Answer: D

NEW QUESTION 113

Which Cisco UCS Manager XML encoded backup type must be used to back up user names, roles, and service profiles?

- A. Full State Configuration
- B. Logical Configuration
- C. All Configuration
- D. System Configuration

Answer: C

NEW QUESTION 115

A content delivery network sends video traffic to a multicast distribution device where the receiver requests the traffic from the multicast distribution device through an IGMP join message. When the traffic reaches the multicast routing device from a CDN, the switching network populates the multicast routing table in the group (S, G) and the multicast distribution device sends the required traffic back to the receiver. Which feature is used to send back the traffic from the streamer to the receiver in the group (S, G)?

- A. RP
- B. IGMP
- C. Reverse Path Forwarding
- D. Source Specific Multicast

Answer: C

NEW QUESTION 120

Refer to the exhibit.


```
; Router 1 configuration
interface loopback1
  ip address 10.10.32.121/30
  ip ospf network point-to-point
  ip router ospf 1 area 0.0.0.0
  ip pim sparse-mode

ip pim rp-address 10.10.32.122 group-list 225.0.0.0/8 bi-dir
```

In a bidirectional PIM network using Phantom RP as an RP redundancy mechanism, two Cisco NX-OS routers have these requirements:

- R1 must be the active RP.
- R2 must be the backup RP that is used only if R1 is not reachable

Drag and drop the configuration steps to complete the configuration for Router 2. Not all configuration steps are used.

```
; Router 2 configuration
interface loopback1
  ip address 
  ip ospf network 
  ip router ospf 1 area 0.0.0.0
  ip pim 

ip pim rp-address  group-list 225.0.0.0/8 bi-dir
```

10.10.32.121/32	10.10.32.121	point-to-point	broadcast
10.10.32.121/29	10.10.32.122	sparse-mode	dense-mode

- A. Mastered
 B. Not Mastered

Answer: A

Explanation:

Graphical user interface, text, application Description automatically generated

Answer :

```
ip address 10.10.32.121/29
ip ospf network point-to-point
router ospf 1 area 0.0.0.0
ip pim sparse-mode

ip pim rp-address 10.10.32.122 group-list 255.0.0.0/8 bi-dir
```

NEW QUESTION 124

An engineer configures a role for a new user in Cisco UCS Manager The role should allow the user to configure vHBAs, vNICs, and server port types. Which role should be assigned to allow the engineer to complete this task?

- A. network administrator
 B. operations
 C. server-compute
 D. AAA administrator

Answer: A

NEW QUESTION 126

An engineer must implement private VLANs for a group of Cisco UCS 8-Series servers. The primary VLAN is present, But the secondary VLAN must Be added to

Both fabrics. Which configuration set accomplishes this task?

- ☐ UCS-A# scope eth-uplink
UCS-A /eth-uplink # create vlan vlan1981 1981
UCS-A /eth-uplink/vlan* # set sharing none
- ☐ UCS-A# scope eth-uplink
UCS-A /eth-uplink # create vlan vlan1981 1981
UCS-A /eth-uplink/vlan* # set sharing isolated
- ☐ UCS-A# scope eth-uplink
UCS-A /eth-uplink # scope fabric a
UCS-A /eth-uplink/fabric # create vlan vlan1981 1981
UCS-A /eth-uplink/fabric/vlan* # set sharing private
- ☐ UCS-A# scope eth-uplink
UCS-A /eth-uplink # scope fabric a
UCS-A /eth-uplink/fabric # create vlan vlan1981 1981
UCS-A /eth-uplink/fabric/vlan* # set sharing secondary

- A. Option A
- B. Option B
- C. Option C
- D. Option D

Answer: B

NEW QUESTION 131

Refer to the exhibit.

```
switch# show vpc brief
Legend:
          (*) - local vPC is down, forwarding via vPC peer-link

vPC domain id          : 10
Peer status             : peer adjacency formed ok
vPC keep-alive status  : peer is alive
Configuration consistency status: success
Type-2 consistency status : success
vPC role                : primary
Number of vPCs configured : 1
Peer Gateway            : Enabled
Dual-active excluded VLANs : -

vPC Peer-link status
-----
id   Port   Status Active vlans
--   --
1    Po20   up    100-105

vPC status
-----
id   Port   Status Consistency Reason           Active vlans
--   --
7    Po7    up    success success           100-104
8    Po8    up    success success           100-102
9    Po9    up    success success           100-103
```

Which VLANs are capable to be assigned on vPC interfaces?

- A. 100-103
- B. 100-104
- C. 100-102
- D. 100-105

Answer: D

NEW QUESTION 133

A network engineer must migrate a Cisco WSA virtual appliance from one physical host to another physical host by using VMware vMotion. What is a requirement for both physical hosts?

- A. The hosts must run Cisco AsyncOS 10.0 or greater.
- B. The hosts must have access to the same defined network.
- C. The hosts must run different versions of Cisco AsyncOS.
- D. The hosts must use a different datastore than the virtual appliance

Answer: B

NEW QUESTION 138

An engineer must optimize ARP responses and reduce unnecessary ARP broadcasts over the VXLAN/EVPN fabric. Which action accomplishes these tasks?

- A. Configure ip proxy-arp under the VLAN SVI associated with the VXLAN VNI.
- B. Configure ip proxy-arp within the VXLAN VNI configuration under the VTEP NVE interface.
- C. Configure suppress-arp within the VXLAN VNI configuration under the VTEP NVE interface.

D. Configure suppress-arp under the VLAN SVI associated with the VXLAN VNI.

Answer: C

NEW QUESTION 139

A Cisco ACI engineer must configure an access port on a Cisco ACI leaf switch. The access policy should be configured so that it supports L3out connectivity concurrently with several EPGs that are mapped to this interface with the static port method. How should the access policy be configured?

- A. by linking the interface policy group to multiple Attachable Access Entity Profiles
- B. with a single Attachable Access Entity Profile that is linked to the corresponding routed domain and physical domain
- C. with two interface policy groups that are linked to the same interface profile port selector
- D. by mapping a single physical domain, mapped to the L3out and EPG interfaces

Answer: D

NEW QUESTION 144

What are two capabilities of the Cisco Network Assurance Engine? (Choose two.)

- A. It verifies the speed of network packet flows by using telemetry.
- B. It predicts the network load on a data center.
- C. It validates that devices comply with network security policies.
- D. It ensures that network performance meets an SLA.
- E. It predicts the impact of changes to the network.

Answer: CE

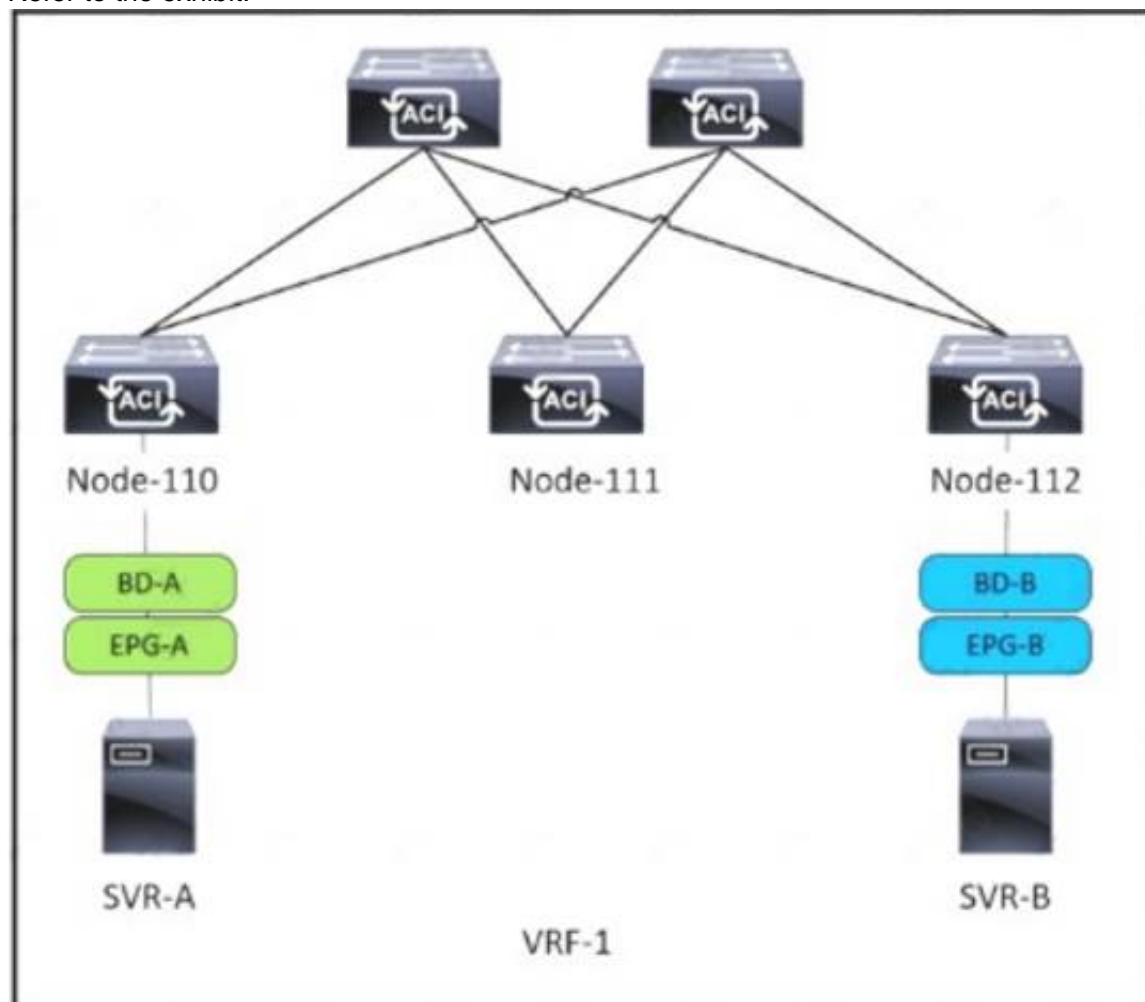
Explanation:

- Predict the impact of network changes
- Verify network-wide behavior
- Ensure network security policy and compliance

<https://www.cisco.com/c/en/us/products/collateral/data-center-analytics/network-assurance-engine/at-a-glance-c>

NEW QUESTION 149

Refer to the exhibit.



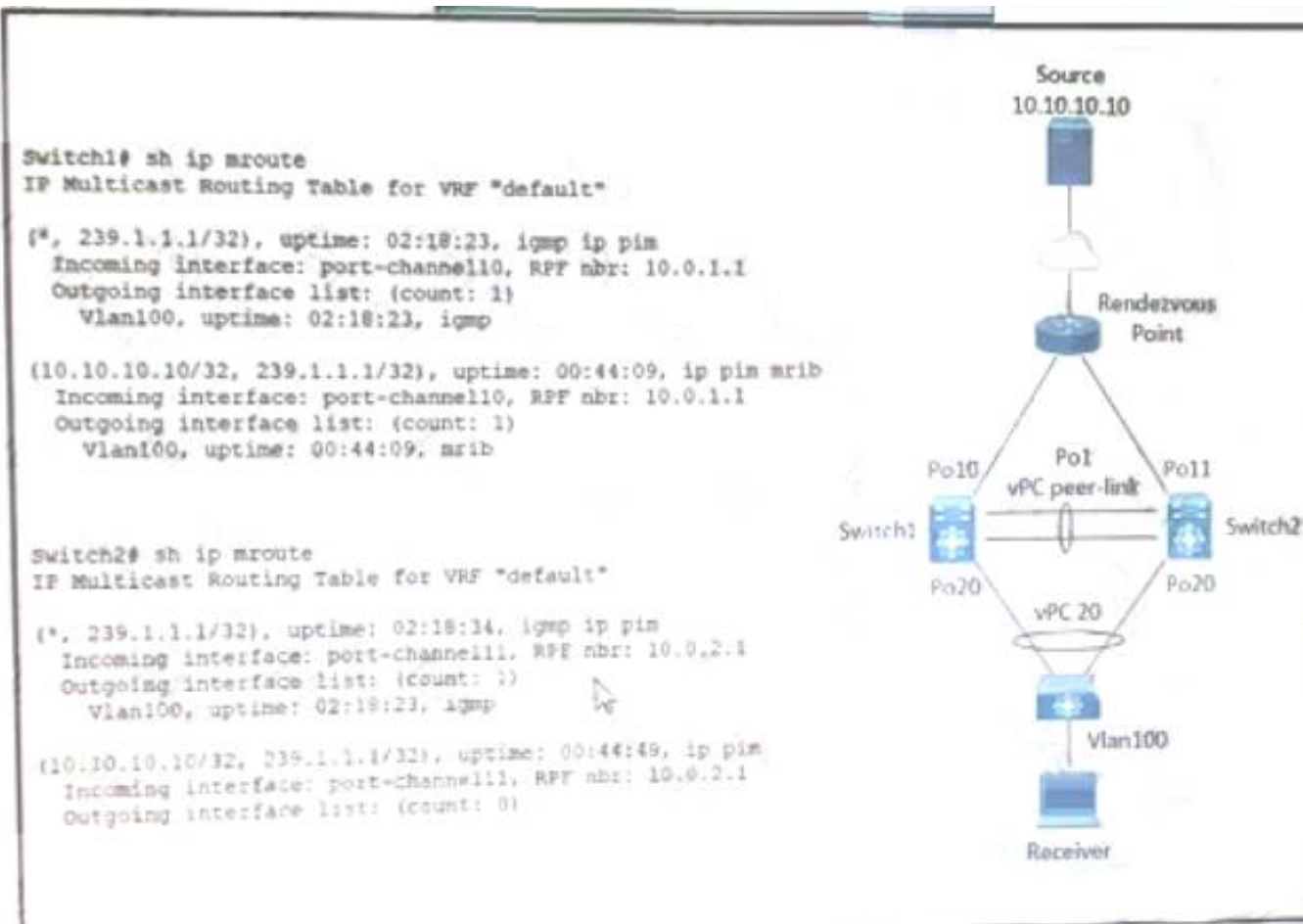
SVR-A in EPG-A/BD-A fails to reach SVR-B in EPG-B/BD-B. Which two conditions should be verified to analyze the traffic between the two EPGs? (Choose two.)

- A. A contract exists between EPG-A and EPG-B and allows the traffic.
- B. Limit Endpoint Learning is disabled on the bridge domain for EPG-B.
- C. SVR-B is learned as an endpoint in EPG-B from Node-112.
- D. EPG-A and EPG-B are excluded from the preferred group.
- E. The bridge domain for EPG-B floods ARP packets.

Answer: AC

NEW QUESTION 150

Refer to the exhibit.



A host with source address 10.10.10.10. sends traffic to multicast group 239.1.1.1. how do the vPC switches forward the multicast traffic?

- A. If multicast traffic is received on Po11 Switch2, the traffic is forwarded out only one Po20.
- B. If multicast traffic is received on Po10 Switch1, the traffic is forwarded out on Po1 and Po20.
- C. If multicast traffic is received on Po11 and Switch2, the traffic is dropped.
- D. If multicast traffic is received on Switch over the vPC peer-link, the traffic is dropped.

Answer: C

Explanation:

<https://www.cisco.com/c/en/us/support/docs/ip/multicast/214140-multicast-forwarding-in-vpc-based-on-loc.htm>

NEW QUESTION 154

What is a characteristic of the install all command on the cisco Nexus series switch?

- A. Upgrades only certain modules
- B. Automatically checks the image integrity
- C. Impact data plan traffic
- D. Continues the upgrade process if any step in the sequence fails

Answer: B

Explanation:

https://www.cisco.com/c/en/us/td/docs/switches/datacenter/nexus9000/sw/7-x/upgrade/guide/b_Cisco_Nexus_9000_Series_NX-OS_Software_Upgrade_and_Downgrade_Guide_Release_7x/b_Cisco_Nexus_9000_Series_NXOS_Software_Upgrade_and_Downgrade_Guide_Release_7x_chapter_010.html

install all command automatically checks the image integrity, which includes the NXOS software image. The command performs a platform validity check to verify that a wrong image is not used. https://www.cisco.com/c/en/us/td/docs/switches/datacenter/nexus3000/sw/upgrade/7_x/b_Cisco_Nexus_3000_S

NEW QUESTION 155

Several production and development database servers exist in the same EPG and IP subnet. The IT security policy is to prevent connections between production and development. Which attribute must be used to assign the servers to different microsegments?

- A. Data center
- B. VMM domain
- C. VM name
- D. IP address

Answer: C

Explanation:

https://www.cisco.com/c/en/us/td/docs/switches/datacenter/aci/apic/sw/3-x/virtualization/b_ACI_Virtualization_

Example: Microsegmentation with Cisco ACI Within a Single EPG or Multiple EPGs in the Same Tenant

You might assign web servers to an EPG so that you can apply the similar policies. By default, all endpoints within an EPG can freely communicate with each other. However, if this web EPG contains a mix of production and development web servers, you might not want to allow communication between these different types of web servers. Microsegmentation with Cisco ACI allows you to create a new EPG and autoassign endpoints based on their VM name attribute, such as "Prod-xxxx" or "Dev-xxx".

NEW QUESTION 156

Which data structure results from running this Python code?

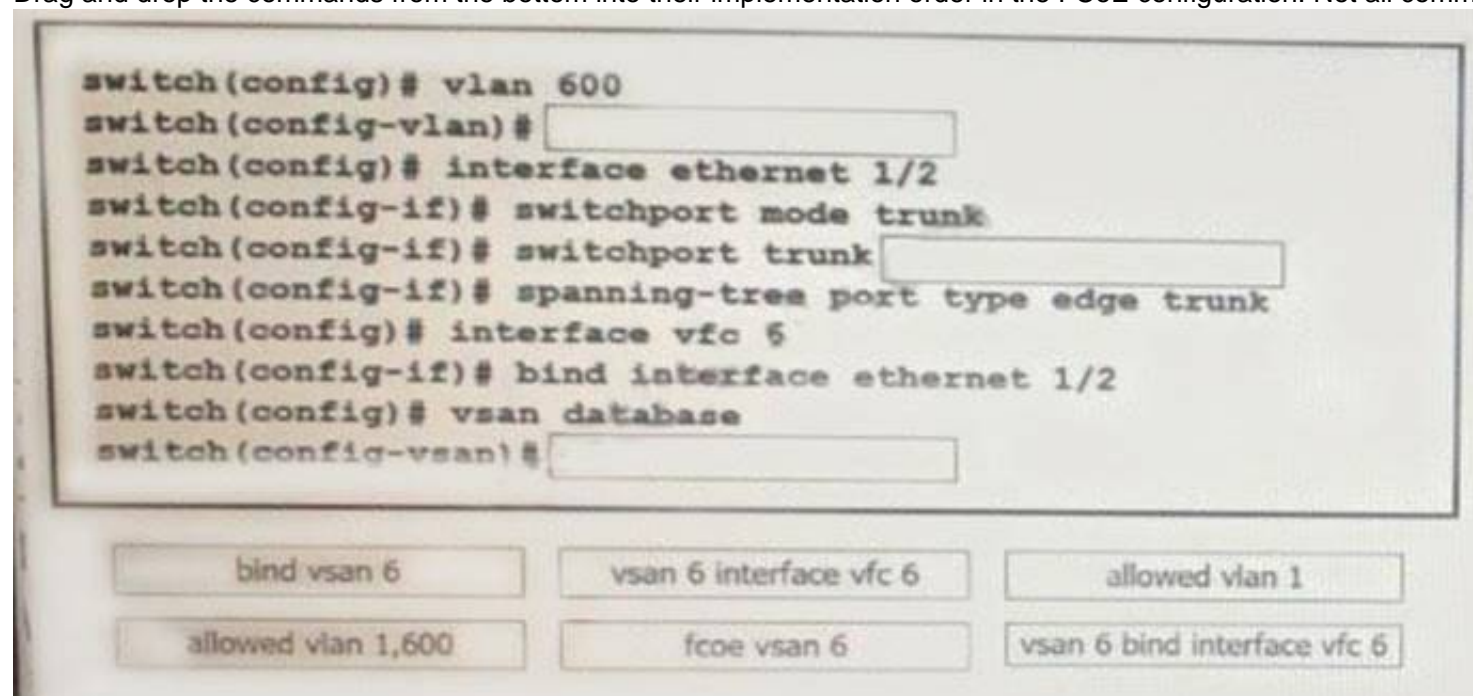
```
>>> import json
>>> f = open('fname.json', 'r')
>>> var1 = json.load(f)
>>> var1
{'u'bd': u'bd1', u'ap': {u'epgs': [{u'name': u'app'}, {u'name': u'web'}, {u'name': u'db}], u'name': u'OnlineStore'}, u'name': u'39106329', u'pvn': u'pvn1'}
```

- A. Set
- B. Tuple
- C. Dictionary
- D. List

Answer: A

NEW QUESTION 159

A network engineer must configure FCoE on an interface of a Cisco MDS 9000 Series Switch. It should be used for mapping between VLAN 600 and VSAN 6. Drag and drop the commands from the bottom into their implementation order in the FCoE configuration. Not all commands are used.



- A. Mastered
- B. Not Mastered

Answer: A

Explanation:

Graphical user interface, text Description automatically generated

NEW QUESTION 163

A network engineer must perform a backup and restore of the Cisco Nexus 5000 Series Switch configuration. The backup must be made to an external backup server. The only protocol permitted between the Cisco Nexus Series switch and the backup server is UDP. The backup must be used when the current working configuration of the switch gets corrupted. Which set of steps must be taken to meet these requirements?

- A. 1. Perform a running-config backup to an SFTP serve
- B. 2. Copy backup-config from the SFTP server to the running-config file.
- C. 1. Perform a startup-config backup to a TFTP serve
- D. 2. Copy backup-config from the backup server to the running-config file.
- E. 1. Perform a running-config backup to an SCP serve
- F. 2. Copy running-config in the boot flash to the running-config file.
- G. 1. Perform a startup-config backup to an FTP serve
- H. 2. Copy startup-config in the boot flash to the running-config file.

Answer: B

Explanation:

TFTP runs on UDP 69 = Is correct

NEW QUESTION 167

An engineer needs to make an XML backup of Cisco UCS Manager The backup should be transferred using an authenticated and encrypted tunnel and it should contain all system and service profiles configuration Which command must be implemented to meet these requirements?

- ☐ create file scp://user@host35/backups/all-config9.bak all-configuration
- ☐ copy startup-config scp://user@host35/backups/all-config9.bak all-configuration
- ☒ create backup scp://user@host35/backups/all-config9.bak all-configuration
- ☐ copy running-config scp://user@host35/backups/all-config9.bak all-configuration

- A. Option A
 B. Option B
 C. Option C
 D. Option D

Answer: C

Explanation:

https://www.cisco.com/en/US/docs/unified_computing/ucs/sw/cli/config/guide/1.4.1/CLI_Config_Guide_1_4_1
 The following example creates a disabled all-configuration backup operation for hostname host35 and commits the transaction:

```
UCS-A# scope system
UCS-A /system* # create backup scp://user@host35/backups/all-config9.bak all-configuration disabled
Password:
UCS-A /system* # commit-buffer
UCS-A /system #
```

NEW QUESTION 172

Refer to the exhibit.

```
switch# show install all impact epld n9000-epld.9.2.1.img
Compatibility check:
Module           Type           Upgradable      Impact          Reason
-----
1                SUP              YES             disruptive      Module Upgradable

Retrieving EPLD versions... Please wait.

Images will be upgraded according to following table:
Module  Type    EPLD           Running-Version  New-Version      Upg-Required
-----
1       SUP    MI FPGA        0x23             0x23             No
1       SUP    IO FPGA        0x06             0x06             No
1       SUP    MI FPGA2       0x23             0x23             No
```

A network engineer plans to upgrade the current software images of a Cisco Nexus switch. What is the impact of starting the EPLD upgrade?

- A. The switch reboots one time for the new EPLD versions to take effect.
 B. The switch reboots multiple times for the new EPLD versions to take effect.
 C. The switch skips the EPLD upgrade for each EPLD device of the switch.
 D. The switch skips the EPLD upgrade for MIFPGA and proceeds with the other EPLD devices.

Answer: C

Explanation:

https://www.cisco.com/c/en/us/td/docs/switches/datacenter/nexus9000/sw/92x/epld-rn/nxos_n9K_epldRN_924.

NEW QUESTION 174

Host 1 is in VLAN 100 located is DataCenter 1 and Host2 is in VLAN200 located in DataCenter2. Which OTV VLAN mapping configuration allows Layer 2 connectivity between these two hosts?

A. DC1:
interface Overlay1
otv extend-vlan 100
otv vlan mapping 100 to 200

DC2:
interface Overlay1
otv extend-vlan 100
otv vlan mapping 100 to 200

B. DC1:
interface Overlay1
otv extend-vlan 100
otv vlan mapping 100 to 200

DC2:
interface Overlay1
otv extend-vlan 200

C. DC1:
interface Overlay1
otv extend-vlan 100

DC2:
interface Overlay2
otv extend-vlan 200

D. DC1:
interface Overlay1
otv extend-vlan 100

DC2:
interface Overlay1
otv extend-vlan 200

- A. Option A
- B. Option B
- C. Option C
- D. Option D

Answer: B

Explanation:

<https://www.cisco.com/c/en/us/support/docs/switches/nexus-7000-series-switches/200998-Nexus-7000-OTV-V>
<https://www.cisco.com/c/en/us/support/docs/switches/nexus-7000-series-switches/200998-Nexus-7000-OTV-V>

NEW QUESTION 177

Which two configuration settings are available in the in the cisco UCS flmware Auto sync server policy?

- A. User Notification
- B. User Acknowledge
- C. No Action
- D. Delayed Action
- E. Immediate Action

Answer: BC

Explanation:

https://www.cisco.com/c/en/us/td/docs/unified_computing/ucs/sw/firmware-mgmt/gui/2-2/b_GUI_Firmware_M Following are the values for the Firmware Auto Sync Server policy: • User Acknowledge—Firmware on the server is not synchronized until the administrator acknowledges the upgrade in the Pending Activities dialog box. • No Action—No firmware upgrade is initiated on the server.

NEW QUESTION 179

An engineer changed a configuration and must perform a rollback. Which statement applies to a Cisco Nexus 5600 Series switch?

- A. Errors are skipped when an atomic rollback type is triggered.
- B. A user who is assigned to the network-operator user role can perform a rollback.
- C. The configuration rollback functionality is disabled when FCoE is enabled.
- D. A system checkpoint is generated automatically when the running configuration is saved to NVRAM.

Answer: C

Explanation:

https://www.cisco.com/c/en/us/td/docs/switches/datacenter/nexus5000/sw/system_management/503_n1_1/cisco_n5k_system_mgmt_cg_rel_503_n1_1_chapter11.pdf
https://www.google.com/url?sa=t&source=web&rct=j&url=https://www.cisco.com/c/en/us/td/docs/switches/datacenter/nexus5000/sw/system_management/503_n1_1/cisco_n5k_system_mgmt_cg_rel_503_n1_1_chapter11.pdf&ved=2ahUKEwjQ8ubTuK3xAhWm3jgGHZ9gB0oQFjAAegQIBRAC&usg=AOvVaw2j0nnvXiChAoVooxX2Qx0g

NEW QUESTION 184

A host EPG Client wants to talk to a webserver in EPG Web. A contract with default settings is defined between EPG Client and EPG Web, which allows TCP communication initiated by the client toward the webserver with TCP destination port 80. Which statement is true?

- A. If EPG Web is made a preferred group member, a contract between EPG Client and EPG Web is no longer required for the host in EPG Client to reach the webserver in EPG Web.
- B. If vzAny is configured to consume and provide a "deny all" contract, traffic between EPG Client and EPG Web is no longer allowed.
- C. The host in EPG Client is allowed to connect to TCP destination port 80 on the webserver in EPG Web. The webserver will not be allowed to initiate a separate TCP connection to a host port with TCP source port 80.
- D. The host in EPG Client is allowed to connect to TCP destination port 80 on the webserver in EPG Web. The webserver is allowed to initiate a separate TCP connection to a host port with TCP source port 80.

Answer: D

Explanation:

Apply Both Direction and Reverse Filter Port in the subject for the filter. These two options are by default enabled... This means that if the provider EPG initiates traffic toward the consumer EPG, the Cisco ACI fabric allows it for any destination ports if the source port is 80.

https://www.cisco.com/c/en/us/td/docs/switches/datacenter/aci/apic/sw/1-x/Operating_ACI/guide/b_Cisco_Operating_ACI/b_Cisco_Operating_ACI_chapter_01000.html Reverse filter and apply in both directions is default.

If a filter allows traffic from any consumer port to a provider port (e.g. 8888), if reverse port filtering is enabled and the contract is applied both directions (say for TCP traffic), either the consumer or the provider can initiate communication. The provider could open up a TCP socket to the consumer using port 8888, whether

the provider or consumer sent traffic first. https://www.cisco.com/c/en/us/td/docs/switches/datacenter/aci/apic/sw/1-x/Operating_ACI/guide/b_Cisco_Operating_ACI/b_Cisco_Operating_ACI_chapter_01000.html

NEW QUESTION 188

A network engineer must download a firmware image from a remote location to a Cisco UCS Fabric Interconnect. The software bundle is over 232 MB in size. The file transfer must use encryption and authentication. Which protocol must be used to accomplish this goal?

- A. RDP
- B. HTTPS
- C. SCP
- D. TFTP

Answer: C

NEW QUESTION 191

Drag and drop the storage technologies from the left onto the correct descriptions on the right.

NFSv2	uses client machine authentication
Kerberos	uses users authentication
NFSv4	authenticates clients and servers in NFSv4
RADIUS	authenticates clients to corporate directory systems

- A. Mastered
- B. Not Mastered

Answer: A

Explanation:

Application Description automatically generated

The release of NFSv4 brought a revolution to authentication and security to NFS exports. NFSv4 mandates the implementation of the RPCSEC_GSS kernel module, the Kerberos version 5 GSS-API mechanism, SPKM-3, and LIPKEY. With NFSv4, the mandatory security mechanisms are oriented towards authenticating individual users, and not client machines as used in NFSv2 and NFSv3. https://web.mit.edu/rhel-doc/5/RHEL-5-manual/Deployment_Guide-en-US/s1-nfs-security.html

NEW QUESTION 196

An engineer must perform an initial configuration of VXLAN Tunnel End-Point functionality on the Cisco Nexus 9000 Series platform. All the necessary features are already enabled on the switch. Which configuration set must be used to accomplish this goal?

- ☐ NX9K(config)# interface loopback0
NX9K(config-if)# ip address 10.10.10.11/32
- ☐ NX9K(config)# interface overlay0
NX9K(config-if-overlay)# source-interface loopback0
- ☐ NX9K(config)# interface VLAN10
NX9K(config-if-nve)# source-interface loopback0
- ☐ NX9K(config)# interface loopback0
NX9K(config-if)# ip address 10.10.10.11/32
- ☐ NX9K(config)# interface tunnel1
NX9K(config-if)# tunnel source loopback0
- ☐ NX9K(config)# interface ethernet1/1
NX9K(config-if)# ip unnumbered loopback0
- ☐ NX9K(config)# interface loopback0
NX9K(config-if)# ip address 10.10.10.11/32
- ☐ NX9K(config)# interface nve1
NX9K(config-if-nve)# source-interface loopback0
- ☐ NX9K(config)# interface ethernet1/1
NX9K(config-if)# ip unnumbered loopback0
- ☐ NX9K(config)# interface loopback0
NX9K(config-if)# ip address 10.10.10.11/32
- ☐ NX9K(config)# interface VLAN10
NX9K(config-if)# ip unnumbered loopback0
- ☐ NX9K(config)# interface nve1
NX9K(config-if-nve)# source-interface loopback0

- A. Option A
- B. Option B
- C. Option C
- D. Option D

Answer: D

NEW QUESTION 198

An engineer must configure Cisco UCS Manager to accept only HTTPS connections that use TLS 1.2. The cipher security level must be high and the length of the keyring key value must be 2048 bits. Drag and drop the code snippets from the right onto the blanks in the code on the left to accomplish these goals. Not all commands are used.

```

scope security
  create keyring ciscokring
  set modulus
  commit-buffer
scope system
  scope services
    enable https
    set https port 8443
    set https
    set https cipher-suite-mode
    set https ssl-protocol
        
```

keyring ciscokring

high-strength

1024 bits

mod2048

tls1-2

secure

- A. Mastered
- B. Not Mastered

Answer: A

Explanation:

Graphical user interface, application Description automatically generated

NEW QUESTION 203

Which behavior defines streaming telemetry as a push model in Cisco devices?

- A. Monitoring clients are pulling data from the network to see real-time statistics
- B. JSON encoded telemetry data is transported using the gRPC protocol
- C. The network devices send data in JSON or GPB format to configured endpoints

D. Events and network changes generate telemetry data

Answer: D

Explanation:

<https://developer.cisco.com/docs/ios-xe/#!streaming-telemetry-quick-start-guide/streaming-telemetry>

NEW QUESTION 208

A POAP-enabled Cisco Nexus switch will not enter POAP mode. Which two conditions should be verified? (Choose two.)

- A. Bootflash must contain a special directory named POAP with poap.py file.
- B. The switch is in bootup process.
- C. No startup configuration is available.
- D. The license file is missing on the switch.
- E. No Cisco NX-OS image is present on the bootflash.

Answer: BC

Explanation:

POAP is an automatic provisioning and zero-touch deployment feature that assists device owners in the initial deployment and configuration of Nexus switches. The feature works by checking for a local configuration script. If the script has been deleted, the switch has been reset to factory settings, or this is the first boot-up, the POAP daemon will connect to a preset list of servers to download an initial configuration file.

To perform this operation, the switch must first obtain an IP address from a local DHCP server. POAP configuration settings can also be passed through the DHCP response.

Which conditions should be verified, so they need to be TRUE. Like no startup (A) and bootup (B). C means that it needs to miss a license file and E means it needs to miss an NX-OS image.

NEW QUESTION 212

An engineer must use the Embedded Event Manager to monitor events that occur on a cisco Nexus 9000 series switch. An environment variable needs to be created so that several policies use the monitored events in in their actions. The external email server is represented by IP address 10.10.10.10. which command sets the environment variable?

- A. N9k2(config)# event manager policy environment mallserver "10.10.10.10"
- B. N9k2# event manager environment mallserver "10.10.10.10"
- C. N9k2 (config-apple1)# environment mallserver "10.10.10.10"
- D. N9k2 (config)# event manager environment mallserver "10.10.10.10"

Answer: D

Explanation:

To set an Embedded Event Manager (EEM) environment variable, use the event manager environment command in global configuration mode. To disable an EEM environment variable, use the no form of this command. <https://www.cisco.com/c/en/us/td/docs/ios-xml/ios/eem/command/eem-cr-book/eem-cr-e1.html>

NEW QUESTION 214

A network engineer is asked to describe the cloud infrastructure models from the perspective of their operation and access to resources. Drag and drop the descriptions from the left onto the appropriate.

Provisioned for open use.	Private cloud
At least two or more separate cloud infrastructures are connected together to facilitate hosted data and application portability.	Community cloud
Owned, managed, and operated by one or more organizations or teams.	Public cloud
Owned, managed, and operated by a single organization.	Hybrid cloud

- A. Mastered
- B. Not Mastered

Answer: A

Explanation:

Private Cloud: owned, managed, and operated by a single organization.

Community Cloud: Owned, managed, and operated by one or more organizations or teams. Public Cloud: Provisioned for open use.

Hybrid Cloud: At least two or more separate cloud infrastructures are connected together to facilitate hosted data and application portability.

NEW QUESTION 219

A network engineer must create a script to quickly verify IP reachability for multiple hosts using ping from the Cisco NX-OS switches. The script should use the management VRF and exit the shell after execution Which script should be used to achieve this objective?


```

○ tclsh
  foreach address {
    192.168.254.1
    192.168.254.2
    192.168.254.3
    192.168.254.4
  } {ping $address source 192.168.254.254}
}
tclquit

○ tclsh
  foreach address {
    192.168.254.1
    192.168.254.2
    192.168.254.3
    192.168.254.4
  } {ping $address source 192.168.254.254}
}

○ tclsh
  foreach address {
    192.168.254.1
    192.168.254.2
    192.168.254.3
    192.168.254.4
  } {ping $address vrf management source 192.168.254.254}
}

○ tclsh
  foreach address {
    192.168.254.1
    192.168.254.2
    192.168.254.3
    192.168.254.4
  } {cli ping $address vrf management source 192.168.254.254}
}
tclquit

```

- A. Option A
- B. Option B
- C. Option C
- D. Option D

Answer: D

NEW QUESTION 220

An engineer must allow communication between the APIC controller and an OpenStack OpFlex agent. The agent is running on a compute node directly plugged to a Cisco ACI leaf switch. The engineer must enable and extend Infra VLAN on the port facing the compute and extend the Infra VLAN to the host. Which action must be taken to meet these requirements?

- A. Enable the Infra VLAN on the Interface Profile policy
- B. Enable the Infra VLAN on the Attachable Access Entity Profile.
- C. Add the infra VLAN via the physical domain.
- D. Add the infra VLAN via the VMM domain.

Answer: C

NEW QUESTION 225

Refer to the exhibit.

An engineer must configure a Fibre Channel device alias named TEST for a device attached to port fc1/9 of a Cisco Nexus Series Switch. Which command set completes the configuration?

A)

```

SITE-A-MDS-Fabric-A# configure terminal
SITE-A-MDS-Fabric-A (config)# device-alias database
SITE-A-MDS-Fabric-A (config-device-alias-db)# device-alias name TEST pwwn 50:00:14:42:d0:0c:f5:20
SITE-A-MDS-Fabric-A (config-device-alias-db)# device-alias commit

```

B)

```

SITE-A-MDS-Fabric-A# configure terminal
SITE-A-MDS-Fabric-A (config)# device-alias database
SITE-A-MDS-Fabric-A (config-device-alias-db)# device-alias name TEST pwwn 50:00:14:42:d0:0c:f5:20
SITE-A-MDS-Fabric-A (config-device-alias-db)# exit

```

C)

```

SITE-A-MDS-Fabric-A# configure terminal
SITE-A-MDS-Fabric-A (config)# device-alias database
SITE-A-MDS-Fabric-A (config-device-alias-db)# device-alias name TEST pwwn 50:00:14:40:47:b0:0c:f5
SITE-A-MDS-Fabric-A (config-device-alias-db)# exit

```

D)

```

SITE-A-MDS-Fabric-A# device-alias database
SITE-A-MDS-Fabric-A (device-alias-db)# device-alias name TEST pwwn 50:00:14:40:47:b0:0c:f5
SITE-A-MDS-Fabric-A (config-device-alias-db)# device-alias commit

```

- A. Option A

- B. Option B
- C. Option C
- D. Option D

Answer: B

NEW QUESTION 228

An engineer performs a Cisco UCS C480 ML M5 installation from a Cisco UCS Manager. As a part of the design, the server must perform an iSCSI boot from the storage array. Which configuration must be performed in the SAN settings in the root organization to satisfy that condition?

- A. Implement a WWPN pool
- B. Create a virtual iSCSI vNIC
- C. Enable a host SAN pool
- D. Create an IQN suffix pool

Answer: D

NEW QUESTION 229

An administrator is implementing DCNM so that events are triggered when monitored traffic exceeds the configured present utilization threshold. The requirement is to configure a maximum limit of 39860437 bytes that applies directly to the statistics collected as a ratio of the total link capacity. Which DCNM performance monitoring configuration parameter must be implemented to achieve this result?

- A. Absolution Values
- B. Baseline
- C. Util%
- D. Per port Monitoring

Answer: A

NEW QUESTION 232

An engineer configures a storage environment for a customer with high-security standards. The secure environment is configured in vsan 50. The customer wants to maintain a configuration and active databases and prevent unauthorized switches from joining the fabric. Additionally, the switches must prevent rogue devices from connecting to their ports by automatically learning the WWPNs of the ports connected to them for the first time. Which two configuration sets must be used to meet these requirements? (Choose two.)

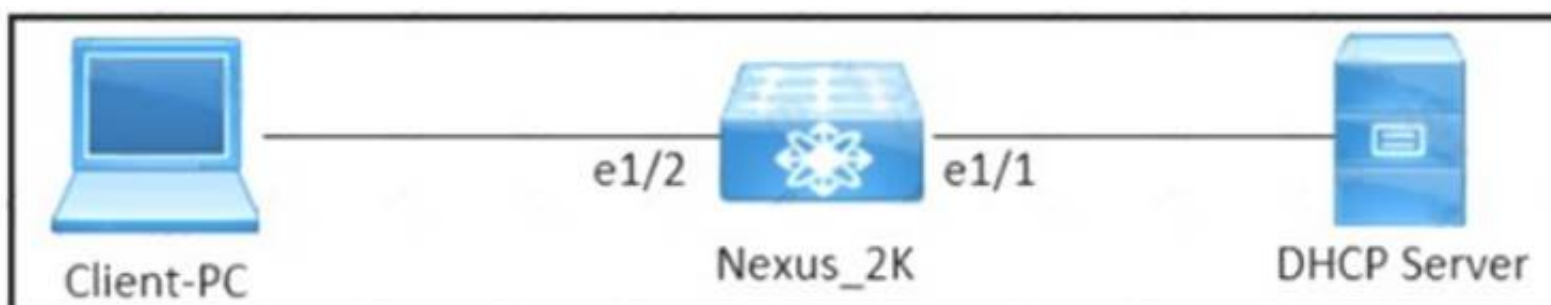
- ☒ port-security enable
port-security activate vsan 50
- ☒ clear fabric-binding activate vsan 50
fabric-binding activate vsan 50
- ☐ fabric-binding activate vsan 50 force
- ☐ fcsp enable
fcsp auto-active
- ☐ fcsp dhchap hash md5 sha1

- A. Option A
- B. Option B
- C. Option C
- D. Option D
- E. Option E

Answer: AC

NEW QUESTION 234

Refer to the exhibit.



[illegible]

An engineer is troubleshooting intermittent connectivity issues between the client PC and the DHCP server. What does the last package captured from the Cisco Nexus 2000 Series Switch indicate?

- A. The DHCP server releases the IP address from the client.
B. The client receives an IP address from the DHCP server.
C. The DHCP server sends an IP address via a broadcast message.
D. The client sends a unicast message to receive an IP address from the DHCP server.

Answer: A

NEW QUESTION 236

An engineer has a primary fabric that is named UCS-A and a secondary fabric that is named UCS-B. A certificate request that has a subject name of sjc2016 for a keyring that is named kr2016 needs to be created. The cluster IP address is 10.68.68.68.

Which command set creates this certificate request?

- A. UCS-A # scope keyring kr2016UCS-A /keyring # create certreq 10.68.68.68 sjc2016UCS-A /keyring* # commit-buffer
- B. UCS-B # scope keyring kr2016UCS-B /keyring # create certreq ip 10.68.68.68 subject-name sjc2016UCS-B /keyring* # commit-both
- C. UCS-B# scope securityUCS-B /security # scope keyring kr2016UCS-B /security/keyring # set certreq 10.68.68.68 sjc2016UCS-B /security/keyring* # commit-both
- D. UCS-A# scope securityUCS-A /security # scope keyring kr2016UCS-A /security/keyring # create certreq ip 10.68.68.68 subject-name sjc2016UCS-A /security/keyring* # commit-buffer

Answer: D

Explanation:

https://www.cisco.com/c/en/us/td/docs/unified_computing/ucs/ucs-manager/CLI-User-Guides/Admin-Management/4-0/b_Cisco_UCS_Manager_CLI_Administration_Mgmt_Guide_4-0/b_Cisco_UCS_Manager_CLI_Administration_Mgmt_Guide_4-0_chapter_0110.html

NEW QUESTION 237

What is a characteristic of the NFS protocol?

- A. It is used for booting Cisco UCS B-Series servers.
- B. It is used to access a storage array at a block level.
- C. It uses UDP and HTTP as its transport.
- D. It uses remote procedure calls with TCP/IP for transport.

Answer: D

NEW QUESTION 239

An engineer must configure HTTPS secure management for Cisco UCS Manager using a key ring named kr2016 and a key size of 1024 bits. The environment consists of a primary fabric interconnect named UCS-A and a secondary fabric interconnect named UCS-B. Which command sequence must be used to accomplish this goal?

- ☐ UCS-B# scope security
 UCS-B /security # keyring kr2016
 UCS-B /security/keyring* # set mod mod1024
 UCS-A /security/keyring* # commit-buffer
- ☐ UCS-A# scope security
 UCS-A /security # create keyring kr2016
 UCS-A /security/keyring* # set modulus mod1024
 UCS-A /security/keyring* # commit-buffer
- ☐ UCS-B# scope security
 UCS-B /security # create keyring kr2016
 UCS-B /security/keyring* # set size mod1024
 UCS-A /security/keyring* # commit-buffer
- ☐ UCS-A# scope security
 UCS-A /security # keyring name kr2016
 UCS-A /security/keyring* # set size 1024
 UCS-A /security/keyring* # commit-buffer

- A. Option A
- B. Option B
- C. Option C
- D. Option D

Answer: B

Explanation:

https://www.cisco.com/en/US/docs/unified_computing/ucs/sw/cli/config/guide/1.4.1/CLI_Config_Guide_1_4_1

```
UCS-A# scope security
UCS-A /security # create keyring kr220
UCS-A /security/keyring* # set modulus mod1024
UCS-A /security/keyring* # commit-buffer
UCS-A /security/keyring #
```

NEW QUESTION 242

An engineer must implement a new VRF that permits communication between all endpoint groups (EPGs) by default. The new EPGs and bridge domains (BDs) that are created in the new VRF must not require additional configuration to permit traffic between the newly created EPGs or BDs. Which action accomplishes this goal?

- A. Provide and consume a permit any contract on the VRF level
- B. Create a VRF in the common tenant.
- C. Place all EPGs in the preferred group.
- D. Implement a global contract.

Answer: C

NEW QUESTION 247

An engineer must configure a control plane policy on a Cisco Nexus 9000 Series Switch that is located at IP 192.168.20.1 that moots those requirements

- Only HTTP, RDP, and ICMP traffic is permitted from subnet 192.168.10.0/24.
- The committed information rate must be 54000 pps.
- The burst size must be 128 packets.
- Any other traffic must be dropped.

Drag and drop the code snippets from the bottom onto the blanks in the code on the top to complete the configuration. Not all code snippets are used

```
ip access-list permithosts
 permit tcp 192.168.10.0/24 
 permit tcp 192.168.10.0/24 host 192.168.20.1 eq 3389
 permit icmp 192.168.10.0/24 host 192.168.20.1

class-map type control-plane match-any hostsmap
 match 

policy-map type control-plane hostsmap
 
 police cir 54000 pps bc 128 packets
```

host 192.168.20.1 eq 443

conform transmit violate drop

class permithosts

class hostsmap

access-group name permithosts

conform transmit violate drop

- A. Mastered
- B. Not Mastered

Answer: A

Explanation:

Text Description automatically generated

NEW QUESTION 250

Which storage protocol reduces file locks by using leasing?

- A. CIFS
- B. NFS 4
- C. NFS 3
- D. SMB

Answer: D

Explanation:

<https://www.ciscolive.com/c/dam/r/ciscolive/apjc/docs/2016/pdf/BRKCOM-1211.pdf>

- **SMB Directory Leasing**
 - Ability to cache file and directory metadata
 - Branch offices need to make less round trips to the central server

NEW QUESTION 254

An engineer must configure an LACP port channel on two Cisco Nexus 7000 Series Switches. The interface e1/2 must be a hot-standby link that initiates negotiation with other ports. Drag and drop the commands from the right onto the blanks in the configuration on the left. Not all commands are used.

```

configure terminal
feature 
interface Ethernet 1/2
 switchport
 channel-group 2
interface Ethernet 1/3
 switchport
 channel-group 2 mode active
 lacp port
        
```

mode active

lacp

priority 1

mode passive

priority 65534

mode on

- A. Mastered
- B. Not Mastered

Answer: A

Explanation:

```

configure terminal
feature lacp
interface Ethernet 1/2
 switchport
 channel-group 2 mode active
interface Ethernet 1/3
 switchport
 channel-group 2 mode active
 lacp port priority 1
        
```

mode active

lacp

priority 1

mode passive

priority 65534

mode on

NEW QUESTION 258

Which action must be performed before renumbering a Cisco UCS chassis?

- A. Move the chassis to new ports on fabric interconnect.
- B. Re-acknowledge the chassis.
- C. Decommission the chassis.
- D. Run the shut and no shut command on the connected ports.

Answer: C

NEW QUESTION 263

An engineer must configure Cisco Nexus 9000 Series Switches for Cisco UCS Director integration. The configuration must enable automated onboarding of the switches as they come online. For security purposes, the switches must have the bare minimum of connection methods enabled. The connection protocol must allow authentication through credentials. Which protocol must be configured on the switches to allow automated onboarding?

- A. SNMP
- B. Telnet
- C. SSH
- D. HTTPS

Answer: C

NEW QUESTION 266

An engineer troubleshoots an Fibre Channel deployment on a Cisco MDS 9000 Series Switch. What does this output indicate about port channel 1?

```
mds9509# show int po1
port-channel 1 is trunking
Hardware is Fibre Channel
Port WWN is 24:01:00:0d:ec:20:ba:00
Admin port mode is F, trunk mode is on
snmp link state traps are enabled
Port mode is TF
Port vsan is 1
Speed is 8 Gbps
Trunk vsans (admin allowed and active) (1,20)
Trunk vsans (up) (1,20)
Trunk vsans (isolated) ()
Trunk vsans (initializing) ()
5 minutes input rate 112 bits/sec, 14 bytes/sec, 0 frames/sec
5 minutes output rate 152 bits/sec, 19 bytes/sec, 0 frames/sec
25787798 frames input, 14359038212 bytes
0 discards, 0 errors
0 CRC, 0 unknown class
0 too long, 0 too short
23082 frames output, 1013152 bytes
0 discards, 0 errors
18 input OLS, 14 LRR, 29 NOS, 0 loop inits
17 output OLS, 0 LRR, 21 NOS, 0 loop inits
Member[1] : fc4/2
Member[2] : fc4/8
Interface last changed at Thu Mar 6 06:27:36 2020
```

- A. Port channel 1 is configured to be an ISL.
- B. Port channel 1 is configured to connect to a host bus adapter.
- C. Port channel 1 is configured to connect to an NPIV switch.
- D. Port channel 1 is configured to connect to an NPV switch.

Answer: A

NEW QUESTION 271

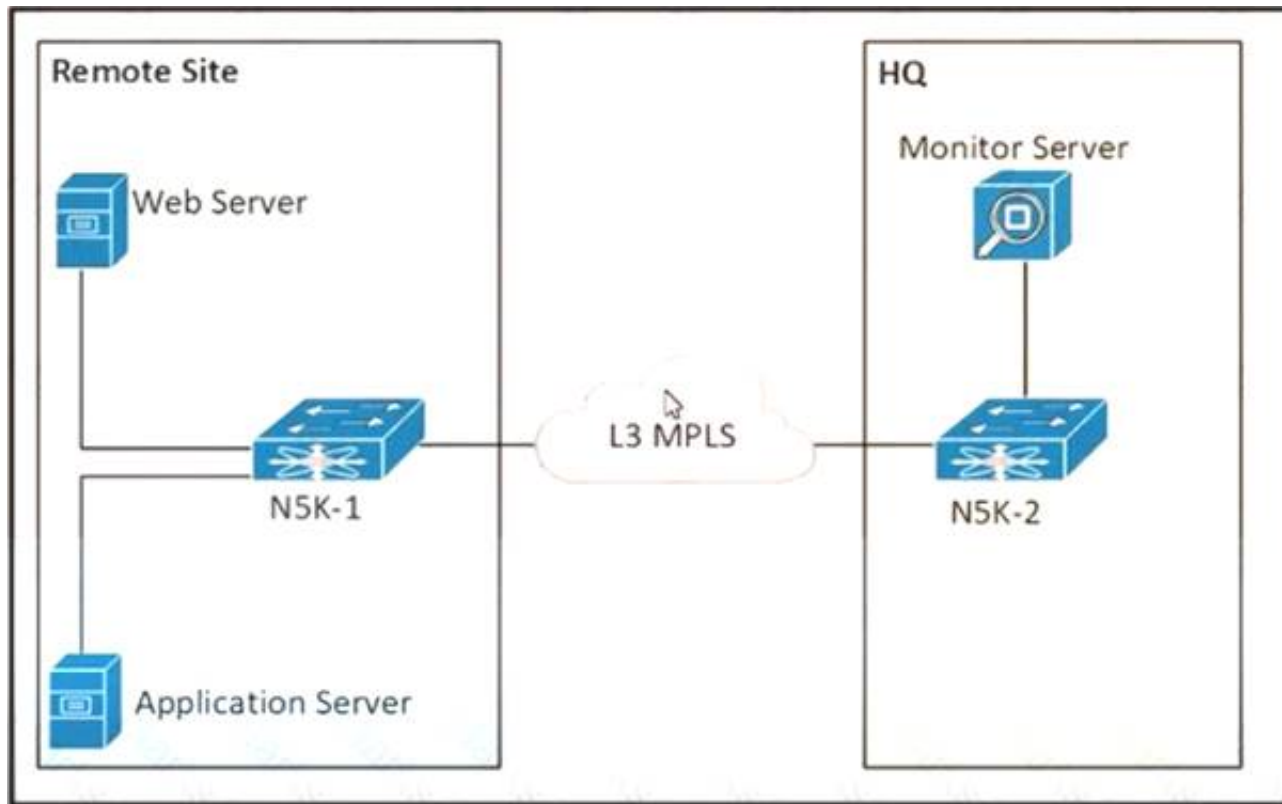
Which NFS version uses the TCP protocol and needs only one IP port to run the service?

- A. NFSv1
- B. NFSv2
- C. NFSv3
- D. NFSv4

Answer: D

NEW QUESTION 275

Refer to the exhibit



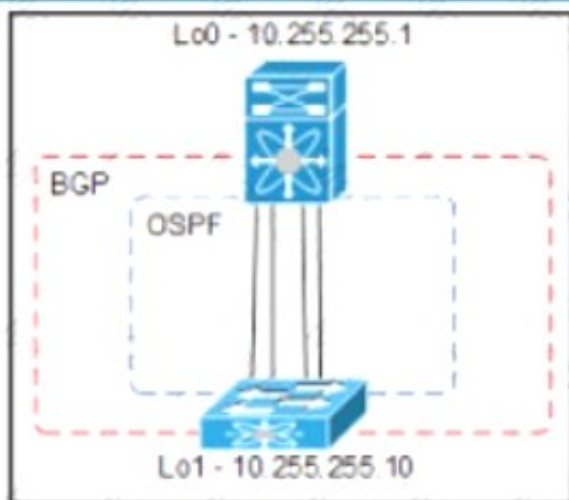
The communication between the web server and the application server experiences poor performance. The network engineer must collect the traffic between the two servers, including the payload for more investigation. The collected data must be sent from the remote site to the headquarters. Which action accomplishes this goal?

- A. Configure an ERSPAN session between N5K-1 and N5K-2.
- B. Configure a SPAN session between N5K-1 and N5K-2.
- C. Configure SNMP on N5K-1 to send the data to the monitor server.
- D. Configure NetFlow on N5K-1 to send the data to the monitor server.

Answer: A

NEW QUESTION 280

Refer to the exhibit



An engineer must provision a VXLAN deployment. The OSPF has already been configured as the underlay protocol. All BGP configurations will be performed using the template method. The deployment must meet these requirements:

- > The local update source for leaf switches must be loopback 1
- > The router ID must be the local loopback IP address
- > The external BGP connections must use a template name

Drag and drop the configuration snippets from the bottom to complete the configuration.

```

router bgp 65000
  router-id 
  template peer SPINE
  bfd
  remote-as 
  update-source loopback1
  timers 3 9
  address-family  peer
    send-community extended
  neighbor 
    peer SPINE

```

10.255.255.1	inherit	65000
10.255.255.10	12vpn	evpn

- A. Mastered
 B. Not Mastered

Answer: A

Explanation:

```

router bgp 65000
  router-id 10.255.255.10
  template peer SPINE
  bfd
  remote-as 65000
  update-source loopback1
  timers 3 9
  address-family 12vpn evpn
    send-community extended
  neighbor 10.255.255.1
    inherit peer SPINE

```

10.255.255.1	inherit	65000
10.255.255.10	12vpn	evpn

NEW QUESTION 285

An engineer is implementing FCoE. Which aspect of DCBXP on a Cisco Nexus switch affects this implementation?

- A. It uses the Cisco Fabric Services protocol to exchange parameters between two peer links.
 B. It always is enabled on 10/100-Mbps native Ethernet ports.
 C. It provides the authentication of peers on the Cisco Nexus switch.
 D. It requires that LLDP transmit and LLDP receive are enabled on the FCoE interface.

Answer: D

Explanation:

The Data Center Bridging Exchange Protocol (DCBXP) is an extension of LLDP. It is used to announce, exchange, and negotiate node parameters between peers. DCBXP parameters are packaged into a specific DCBXP TLV. This TLV is designed to provide an acknowledgement to the received LLDP packet. DCBXP is enabled by default, provided LLDP is enabled. DCBXP is disabled on ports where LLDP transmit or receive is disabled.
https://www.cisco.com/c/en/us/td/docs/switches/datacenter/nexus5000/sw/layer2/503_n2_1/b_Cisco_n5k_layer2

NEW QUESTION 289

Refer to the exhibit.

```
Step 20 Enter no (no is the default) if you are satisfied with the configuration.

The following configuration will be applied:

switchname CiscoMDS
interface mgmt0
  ip address 192.168.10.10
  subnetmask 255.255.255.0
  no shutdown
ip default-gateway 192.168.10.1
telnet server enable
no ssh server enable
no system default switchport shutdown
system default switchport trunk mode on
no zone default-zone permit vsan 1-4093
zoneset distribute full vsan 1-4093
Would you like to edit the configuration? (yes/no) [n]: no

Step 21 Enter yes (yes is default) to use and save this configuration.

Use this configuration and save it? (yes/no) [y]: yes
```

An engineer is configuring a Cisco MDS 9000 Series Switch for the first time. After the initial setup process, the name server at IP 192.168.10.11 is missing from the configuration. Which set of actions completes the configuration?

- A. Enter no at step 21 and reinitialize the install
- B. Press the Esc key to access ROMMON mode.
- C. Enter no at step 21 and reload the switch
- D. Configure the advanced IP options.
- E. Enter yes at step 21 to edit the configuration
- F. Add the line `dns-server 192.168.10.11`.
- G. Enter yes at step 21 and log in
- H. Modify the startup configuration DNS

Answer: B

NEW QUESTION 294

An engineer enters these commands while in EEM on a Cisco Nexus 9000 Series Switch. `event manager applet Backup-config` `event timer watchdog time 1800` `name timer` `event cli match "copy running-config startup-config"` what is the result of applying this configuration?

- A. It saves the running configuration every 1800 seconds.
- B. It generates an error because no action is mentioned.
- C. It executes the `copy running-config startup-config` command.
- D. It blocks the `copy running-config startup-config` command.

Answer: B

Explanation:

<https://www.cisco.com/c/en/us/td/docs/switches/datacenter/nexus9000/sw/93x/system-management/b-cisco-nexus-graphical-user-interface-text-application-email-description-automatically-generated>

Prerequisites for EEM

EEM has the following prerequisites:

- You must have network-admin user privileges to configure EEM.

Guidelines and Limitations for EEM

EEM has the following configuration guidelines and limitations:

- The maximum number of configurable EEM policies is 500.
- Action statements within your user policy or overriding policy should not negate each other or adversely affect the associated system policy.
- To allow a triggered event to process any default actions, you must configure the EEM policy to allow the default action. For example, if you match a CLI command in a match statement, you must add the event-default action statement to the EEM policy or EEM will not allow the CLI command to execute.
- When you configure an EEM policy action to collect `show tech` commands, make sure to allocate enough time for the `show tech` commands to complete before the same action is called again.

NEW QUESTION 295

An engineer is implementing traffic monitoring for a server vNIC that is configured with fabric failover enabled. The requirement is for the traffic to be sent to an analyzer, even during a failure of one of the fabric interconnects. The analyzer is connected to unconfigured Ethernet ports on both fabric interconnects. Which configuration accomplishes this task?

- A. Create two traffic monitoring session with different names, one per fabric Connect the analyzer connected to FI-BI the destination for both monitoring sessions.
- B. Create two traffic monitoring session with different names, one per fabric.
- C. Connect an analyser on each FI as the destination for the monitoring session local to the FI.
- D. Create two traffic monitoring sessions with the same name, one per fabric Connect the analyze connected to FI-A as the destination for both monitoring sessions

Answer: A

NEW QUESTION 297

An engineer is configuring a vHBA template in UCS Manager. The engineer needs to specify the logical addresses used by the vHBA and the path through which the SAN traffic flows. Which two resources must be specified in the vHBA template? (Choose two.)

- A. MAC addresses
- B. WWPNPool
- C. WWNN
- D. VLAN ID
- E. Fabric ID

Answer: BE

Explanation:

vNIC and vHBA Templates

vNIC and vHBA resources are always associated with specific FIs (A-side or B-side fabric interconnect). A typical Service Profile has at least two vNICs and two vHBAs; one bound to each side. vNIC (or vHBA) templates can be used to encapsulate both the MAC address pool (or WWPN pool) association as well as the fabric ID.

Best Practice: vNIC and vHBA Templates

Create reusable vNIC and vHBA templates in which termination is either reflected in the name (e.g., "fc0-A") or through well-accepted conventions (e.g., even interface to A side, and odd interface to B side).

vNIC templates should be thought of as application-specific network profiles that include important security definitions, such as VLAN mappings, as shown in Figure 6.

https://www.cisco.com/c/en/us/products/collateral/servers-unified-computing/ucs-manager/whitepaper_c11-697

NEW QUESTION 298

An engineer must remove the running configuration of a Cisco Nexus 9000 Series Switch and replace it with a backup file without restarting the switch. The backup file is stored on an SFTP server that is reachable via the An engineer must remove the running configuration mgmt0 interface Which set of commands accomplishes this task?

- ☐ `copy sftp://admin@192.168.10.100/backup.cfg startup-config vrf mgmt0`
`copy startup-config running-config`
- ☐ `configure replace sftp://admin@192.168.10.100/backup.cfg vrf mgmt0`
`copy running-config bootflash:///startup-config`
- ☐ `copy sftp://admin@192.168.10.100/backup.cfg bootflash:///backup.cfg vrf management`
`configure replace bootflash:///backup.cfg`
- ☐ `copy sftp://admin@192.168.10.100/backup.cfg startup-config vrf management`
`reload in 10`

- A. Option A
- B. Option B
- C. Option C
- D. Option D

Answer: C

NEW QUESTION 301

A network engineer must implement a telemetry solution to collect real-time structured data in a large-scale network. Drag and drop the actions from the left into the order on the right to implement the solution. Not all actions are used.

Configure the flow monitor and flow record.	step 1
Set the format and destination to which the data is sent.	step 2
Configure the data to be collected as part of the sensor group.	step 3
Set the subscription between the sensor group and the destination.	

- A. Mastered
- B. Not Mastered

Answer: A

Explanation:

- * 1. set the format and destination to which the data is sent.
- * 2. configure the data to be collected as part of the sensor group.
- * 3. set the subscription between the sensor-group and the destination.

NEW QUESTION 305

A small remote office is set to connect to the regional hub site via NSSA ASBR. Which type of LSA is sent to the remote office OSPF area?

- A. type 7 LSA
- B. type 3 LSA
- C. type 1 LSA
- D. type 5 LSA

Answer: A

NEW QUESTION 306

An engineer performs a set of configuration changes for the vPC domain using Session Manager. Which two commands are used to verify the configuration and apply the device changes when no errors are returned?
(Choose two)

- A. write
- B. verify
- C. commit
- D. checkpoint
- E. apply

Answer: BC

Explanation:

https://www.cisco.com/c/en/us/td/docs/switches/datacenter/nexus9000/sw/6-x/system_management/configuration

Verifying a Session

Use the following command in session mode to verify a session:

Command	Purpose
verify [verbose] Example: switch(config-s)# verify	Verifies the configuration as a whole, based on the existing hardware and software configuration and resources. Cisco NX-OS returns an error if the configuration does not pass this verification.

Committing a Session

Use the following command in session mode to commit a session:

Command	Purpose
commit [verbose] Example: switch(config-s)# commit	Validates the configuration changes made in the current session and applies valid changes to the device. If the validation fails, Cisco NX-OS reverts to the original configuration.

<https://www.cisco.com/c/en/us/td/docs/switches/datacenter/nexus5000/sw/configuration/guide/cli/CLIconfigura>

NEW QUESTION 307

A DevOps engineer must implement a bash script to query a REST API and return the available methods. Which code snippet completes the script?

curl -i -X --missing code-- http://api.cisco.com:8080/api -u admin:xT41M5P3X425VOE71NB5D

- A. DELETE
- B. TRACE
- C. POST
- D. OPTIONS

Answer: C

NEW QUESTION 310

An engineer implements a Python script inside a Cisco Bash shell. The script contains this dictionary object:

```
switch_id_list = {  
    "N9K-Spine-1": "842534699747",  
    "N9K-Leaf-1": "126784690",  
    "N9K-Leaf-2": "56556473"  
}
```

Which command must be used to add the 'N9K-Spine-2': '1498323434' element to the switch_id list dictionary?

- ☒ switch_id_list = [{"N9K-Spine-2": "1498323434"}]
- ☐ switch_id_list.update({"N9K-Spine-2": "1498323434"})
- ☐ switch_id_list.append({"N9K-Spine-2": "1498323434"})
- ☐ switch_id_list += {"N9K-Spine-2": "1498323434"}

- A. Option A
- B. Option B
- C. Option C
- D. Option D

Answer: C

NEW QUESTION 315

Refer to the exhibit.

```
import time  
import cli  
  
date= time.strftime('%Y%m%d')  
file=  
cli.execute ('copy running-config ftp://10.183.249.182/FusionSW/' + file)  
exit()
```

Which command needs to be added to the line starting with the "file" keyword to have the generated running-config file with the name 'fusion-config_' and current date?

- A. string(Cfusion-config_) + date)
- B. ('fusion-config') + date
- C. str.fusion-config)) + date
- D. (*fusion-config_ * date')

Answer: B

NEW QUESTION 316

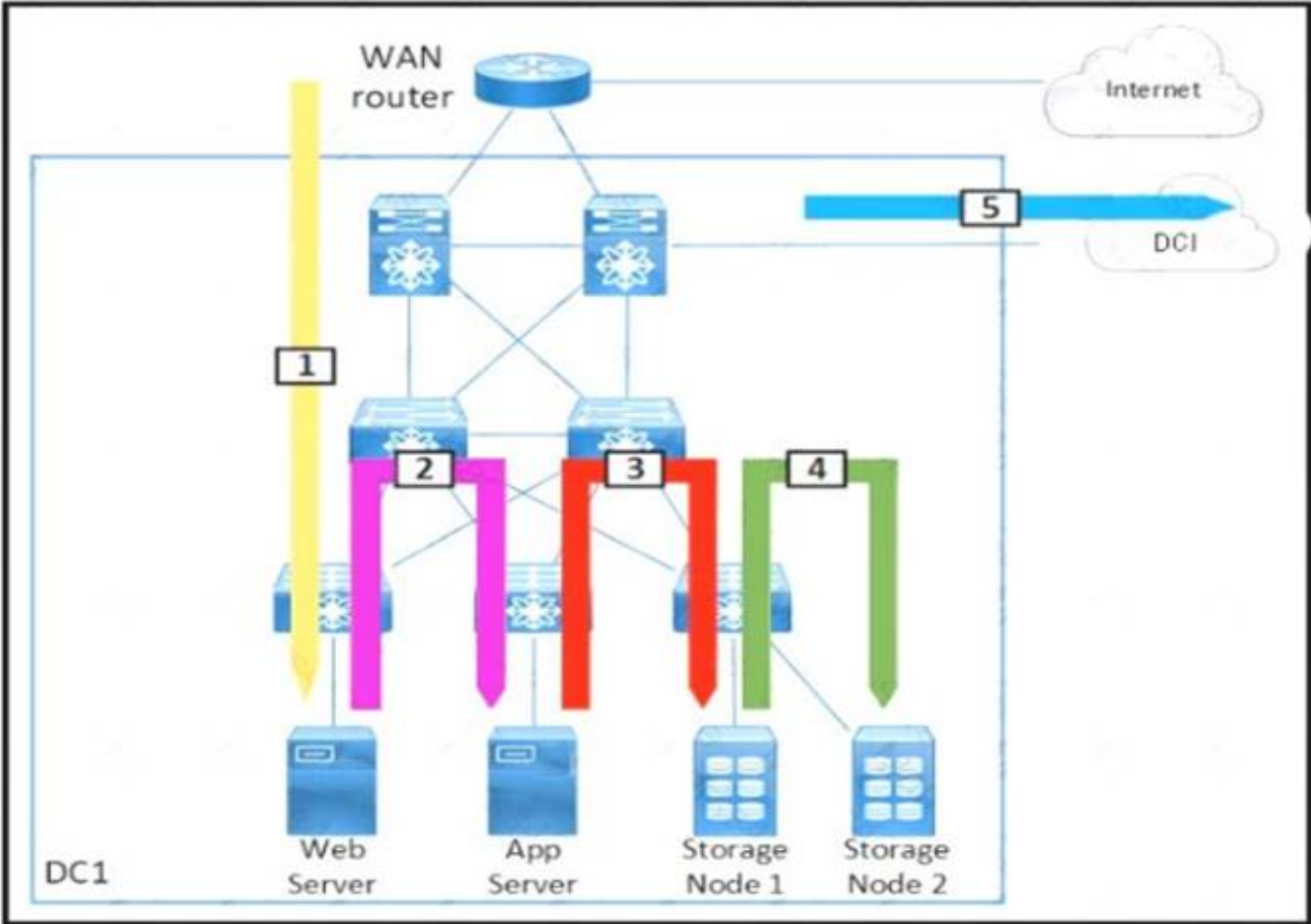
A bridge domain is being extended out of a Cisco ACI fabric. Between which of these components are policies used to identify the connectivity between Endpoint Groups and the external connection?

- A. an external bridge domain and an external routed domain
- B. internal contracts and external contracts
- C. internal EPGs and external EPGs
- D. L2Out and L3Out

Answer: D

NEW QUESTION 317

Refer to the exhibit.



Drag and drop each traffic flow type from the left onto the corresponding number on the right Not all traffic flow types are used

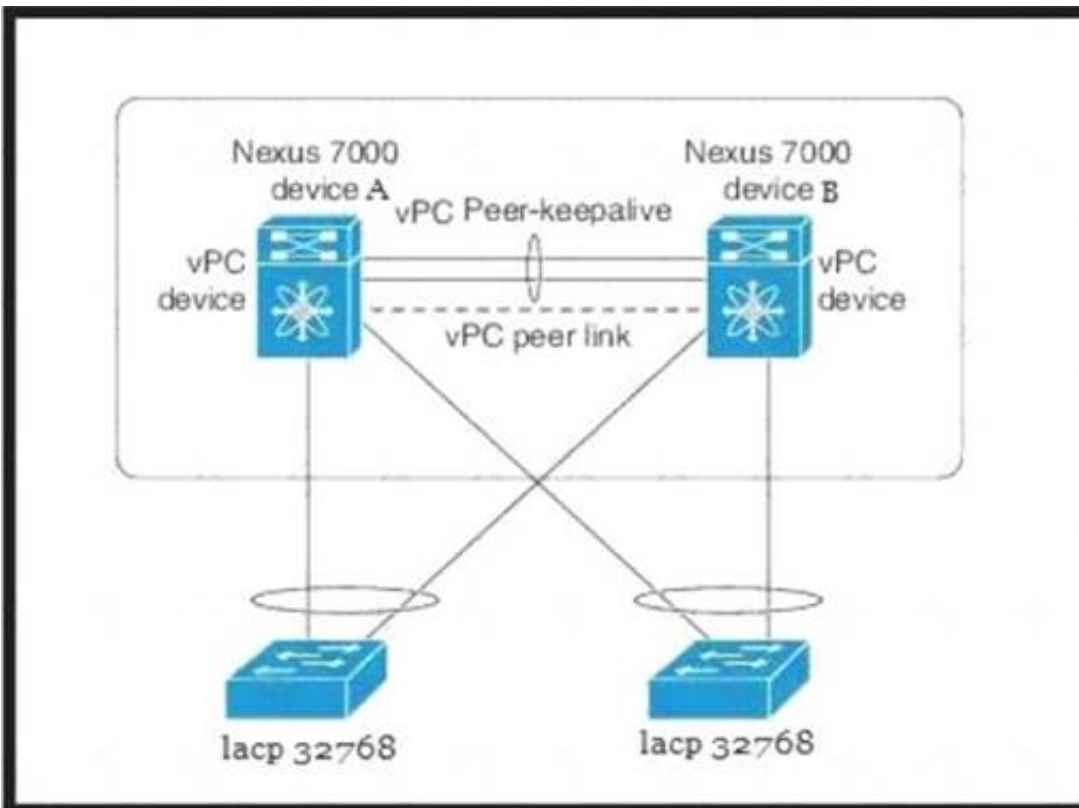
Inter-Data Center	1
East-West	2
North-West	3
North-South	4
South-West	5
Storage Traffic	
Storage Replication	

- A. Mastered
- B. Not Mastered

Answer: A

Explanation:
Table Description automatically generated

NEW QUESTION 322
Refer to the exhibit.



Which configuration ensure that the cisco Nexus 7000 series switches are the primary devices for LACP?

- A. N7K_A(config-vpc-domain)# role priority 1N7K_B(config-vpc-domain)# role priority 2
- B. N7K_A(config-vpc-domain)# system-priority 32768N7K_B(config-vpc-domain)# system-priority 32768
- C. N7K_A(config-vpc-domain)# system-priority 100N7K_B(config-vpc-domain)# system-priority 200
- D. N7K_A(config-vpc-domain)# system-priority 4000N7K_B(config-vpc-domain)# system-priority 4000

Answer: D

NEW QUESTION 323

Refer to the exhibit.

```
switch# show radius-server
Global RADIUS shared secret:*****
retransmission count:5
timeout value:10
following RADIUS servers are configured:
  myradius.cisco.users.com:
    available for authentication on port:1812
    available for accounting on port:1813
  172.22.91.37:
    available for authentication on port:1812
    available for accounting on port:1813
    RADIUS shared secret:*****
  10.10.0.0:
    available for authentication on port:1812
    available for accounting on port:1813
    RADIUS shared secret:*****

switch# show radius-server groups
total number of groups:4
following RADIUS server groups are configured:
  group radius:
    server: all configured radius servers
  group Group1:
    server: Server3 on auth-port 1812, acct-port 1813
    server: Server5 on auth-port 1812, acct-port 1813
  group Group5:
```

A network engineer requires remote access via SSH to a Cisco MDS 9000 Series Switch. The solution must support secure access using the local user database when the RADIUS servers are unreachable from the switches. Which command meets these requirements?

- A. aaa authentication none
- B. aaa authentication login default group radius
- C. aaa authentication login default group local
- D. aaa authentication login default fallback error local

Answer: D

Explanation:

https://www.cisco.com/c/en/us/td/docs/switches/datacenter/mds9000/sw/6_2/configuration/guides/security/nx-o

Configuring Fallback Mechanism for Authentication

You can enable/disable fallback to local database in case the remote authentication is set and all AAA servers are unreachable (authentication error). The fallback is set to local by default in case of an authentication error. You can disable this fallback for both console and ssh/telnet login. Disabling this fallback will tighten the security of authentication.

The following steps explain the fallback mechanism for authentication:

Step 1 By default fallback will be enabled for both default/console login. The "sh run aaa all" command can be used to verify this.

Step 2 Disabling fallback will print a warning message.

The CLI syntax and behavior is as follows:

	Command	Purpose
Step 1	switch# config t switch(config)#	Enters configuration mode.
Step 2	switch(config)# show run aaa all aaa authentication login default fallback error local aaa authentication login console fallback error local	Displays the default fallback behavior.
Step 3	switch(config)# no aaa authentication login default fallback error local WARNING!!! Disabling fallback can lock your switch.	Disables the fallback to local database for authentication. Note Replace default with console in this command to disable fallback to console.

NEW QUESTION 327

Which service profile is affected if the default host firmware policy in Cisco UCS Manager is changed?

- A. any service profile that has no host firmware policy defined
- B. any service profile that uses a user-created host firmware policy
- C. any service profile that is not in the root sub-org
- D. any service profile that uses the global-default host firmware policy

Answer: A

Explanation:

https://www.cisco.com/c/en/us/td/docs/unified_computing/ucs/ucs-manager/GUI-User-Guides/Firmware-Mgmt/3-1/b_UCSM_GUI_Firmware_Management_Guide_3_1/b_UCSM_GUI_Firmware_Management_Guide_3_1_chapter_011.html

NEW QUESTION 330

Refer to the exhibit.

```
event manager applet ConfigMgmt
  event cli match "copy run start"
  action 1 syslog priority warnings msg Configuration Modified
```

An engineer logs all occurrences of a configuration being saved. The engineer must generate an additional log message when someone attempts to change the configuration for interface Ethernet 1/1. Which set of commands must be used to meet these requirements?

```
event manager applet ConfigMgmt
  event cli tag eth match "interface Ethernet1/1"
  event cli tag copy match "copy run start"
  event cli tag conf match "configure terminal"
  tag conf or eth or copy happens 2 in 3
  action 1 syslog priority warnings msg Configuration Modified
  action 2 event-default
```


- ☒ event manager applet ConfigMgmt
event cli tag eth match "configure terminal ; interface Ethernet1/1"
event cli tag copy match "copy run start"
tag eth or copy happens 1 in 2
action 1 syslog priority warnings msg Configuration Modified
action 2 event-default
- ☐ event manager applet ConfigMgmt
event cli tag eth match "interface Ethernet1/1"
event cli tag copy match "copy run start"
event cli tag conf match "configure terminal"
tag conf and eth or copy happens 1 in 4294967295
action 1 syslog priority warnings msg Configuration Modified
- ☐ event manager applet ConfigMgmt
event cli tag eth match "configure terminal ; interface Ethernet1/1"
event cli tag copy match "copy run start"
tag eth and copy happens 1 in 2
action 1 syslog priority warnings msg Configuration Modified

- A. Option A
B. Option B
C. Option C
D. Option D

Answer: D

NEW QUESTION 335

A network engineer must restore the running configuration on a Cisco Nexus 5000 Series Switch to an existing snapshot called "stable1". The restore procedure should proceed only if no errors occur. Which configuration should be used to accomplish this goal?

- ☐ rollback running-config checkpoint stable1 best-effort
- ☐ rollback checkpoint stable1 best-effort running-config atomic
- ☐ rollback checkpoint stable1 best-effort running-config best-effort
- ☐ rollback running-config checkpoint stable1 atomic

- A. Option A
B. Option B
C. Option C
D. Option D

Answer: D

NEW QUESTION 338

.....

Thank You for Trying Our Product

We offer two products:

1st - We have Practice Tests Software with Actual Exam Questions

2nd - Questions and Answers in PDF Format

350-601 Practice Exam Features:

- * 350-601 Questions and Answers Updated Frequently
- * 350-601 Practice Questions Verified by Expert Senior Certified Staff
- * 350-601 Most Realistic Questions that Guarantee you a Pass on Your First Try
- * 350-601 Practice Test Questions in Multiple Choice Formats and Updates for 1 Year

100% Actual & Verified — Instant Download, Please Click
[Order The 350-601 Practice Test Here](#)