

# Exam Questions PMP

Project Management Professional

<https://www.2passeasy.com/dumps/PMP/>



#### NEW QUESTION 1

Which process determines the risks that might affect the project?

- A. Perform Qualitative Risk Analysis
- B. Identify Risks
- C. Plan Risk Management
- D. Perform Quantitative Risk Analysis

**Answer:** B

#### NEW QUESTION 2

Plan Risk Management is the process of defining how to:

- A. Communicate identified risks to the project stakeholders.
- B. Conduct risk management activities for a project.
- C. Analyze the impact a specific risk may have on the project.
- D. Address unexpected risks that may occur during a project.

**Answer:** B

#### NEW QUESTION 3

What is the risk rating if the probability of occurrence is 0.30 and the impact if it does occur is moderate (0.20)?

- A. 0.03
- B. 0.06
- C. 0.10
- D. 0.50

**Answer:** B

#### NEW QUESTION 4

What entity is assigned various responsibilities related to the centralized and coordinated management of those projects under its domain?

- A. Project management office
- B. Project team office
- C. Executive sponsor office
- D. Program management office

**Answer:** A

#### NEW QUESTION 5

The ability to influence cost is greatest during which stages of the project?

- A. Early
- B. Middle
- C. Late
- D. Completion

**Answer:** A

#### NEW QUESTION 6

A project can be defined as a:

- A. Temporary endeavor undertaken to create a unique product, service, or result
- B. Temporary endeavor that produces repetitive outputs
- C. Permanent endeavor undertaken to create a unique product, service, or result
- D. Permanent endeavor that produces repetitive outputs

**Answer:** A

#### NEW QUESTION 7

Which element does a project charter contain?

- A. Management reserves
- B. Work breakdown structure
- C. Stakeholder list
- D. Stakeholder register

**Answer:** C

#### NEW QUESTION 8

The project governance approach should be described in the:

- A. change control plan
- B. project scope
- C. statement of work
- D. project management plan

**Answer:** D

#### NEW QUESTION 9

Monte Carlo is which type of risk analysis technique?

- A. Probability
- B. Quantitative
- C. Qualitative
- D. Sensitivity

**Answer:** B

#### NEW QUESTION 10

Which Process Group and Knowledge Area include the Sequence Activities process?

- A. Executing Process Group and Project Time Management
- B. Executing Process Group and Project Cost Management
- C. Planning Process Group and Project Time Management
- D. Planning Process Group and Project Cost Management

**Answer:** C

#### NEW QUESTION 10

In which type of organizational structure are staff members grouped by specialty?

- A. Functional
- B. Projectized
- C. Matrix
- D. Balanced

**Answer:** A

#### NEW QUESTION 11

Which type of managers do composite organizations involve?

- A. Functional managers and manager of project managers
- B. Functional managers only
- C. Project managers only
- D. Technical managers and project managers

**Answer:** A

#### NEW QUESTION 15

An input required to develop a preliminary project scope statement is:

- A. Organizational Structure
- B. Organizational Process Assets
- C. Organizational Matrix
- D. Organizational Breakdown Structures

**Answer:** B

#### NEW QUESTION 16

What name(s) is (are) associated with the Plan-Do-Check-Act cycle?

- A. Pareto
- B. Ishikawa
- C. Shewhart-Deming
- D. Delphi

**Answer:** C

#### NEW QUESTION 19

A primary function of a project management office is to support project managers in a variety of ways, including which of the following?

- A. Developing and managing project policies, procedures, templates, and other shared documentation
- B. Acting as the project sponsor by providing financial resources to the project
- C. Resolving issues and change management within a shared governance structure
- D. Aligning organizational/strategic direction that affects project and program goals

**Answer:** A

**NEW QUESTION 20**

Which of the following is a tool and technique used in the Develop Schedule process?

- A. Three-point estimates
- B. Resource leveling
- C. Precedence diagramming method
- D. Bottom-up estimating

**Answer:** B

**NEW QUESTION 22**

Skills necessary for project management such as motivating to provide encouragement; listening actively; persuading a team to perform an action; and summarizing, recapping, and identifying next steps are known as:

- A. organizational skills
- B. technical skills
- C. communication skills
- D. hard skills

**Answer:** C

**NEW QUESTION 25**

Who is responsible for determining which processes from the Process Groups will be employed and who will be performing them?

- A. Project sponsor and project manager
- B. Project sponsor and functional manager
- C. Project manager and project team
- D. Project team and functional manager

**Answer:** C

**NEW QUESTION 28**

The Identify Stakeholders process is found in which Process Group?

- A. Initiating
- B. Monitoring and Controlling
- C. Planning
- D. Executing

**Answer:** A

**NEW QUESTION 32**

Which type of diagram includes groups of information and shows relationships between factors, causes, and objectives?

- A. Affinity
- B. Scatter
- C. Fishbone
- D. Matrix

**Answer:** D

**NEW QUESTION 35**

Which of the following is TRUE about most project life cycles?

- A. Staffing level is highest at the start.
- B. The stakeholders' influence is highest at the start.
- C. The level of uncertainty is lowest at the start.
- D. The cost of changes is highest at the start.

**Answer:** B

**NEW QUESTION 36**

Through whom do project managers accomplish work?

- A. Consultants and stakeholders
- B. Stakeholders and functional managers
- C. Project team members and consultants
- D. Project team members and stakeholders

**Answer:** D

**NEW QUESTION 40**

Which statement correctly describes the value of a business case?

- A. It provides the necessary information to determine if a project is worth the required investment.
- B. It provides for alternative dispute resolution procedures in event of contract default.
- C. It offers one of several alternative scenarios which assist in performing qualitative risk analysis.
- D. It is used to help a project manager understand the scope of commercial advantages.

**Answer:** A

#### NEW QUESTION 41

Project contracts generally fall into which of the following three broad categories?

- A. Fixed-price, cost reimbursable, time and materials
- B. Make-or-buy, margin analysis, fixed-price
- C. Time and materials, fixed-price, margin analysis
- D. Make-or-buy, lump-sum, cost-plus-incentive

**Answer:** A

#### NEW QUESTION 44

Which is the Define Scope technique used to generate different approaches to execute and perform the work of the project?

- A. Build v
- B. buy
- C. Expert judgment
- D. Alternatives identification
- E. Product analysis

**Answer:** C

#### NEW QUESTION 49

A risk that arises as a direct result of implementing a risk response is called a:

- A. contingent risk
- B. residual risk
- C. potential risk
- D. secondary risk

**Answer:** D

#### NEW QUESTION 52

A tool and technique used during the Collect Requirements process is:

- A. prototypes.
- B. expert judgment.
- C. alternatives identification.
- D. product analysis.

**Answer:** A

#### NEW QUESTION 55

Power, urgency, and legitimacy are attributes of which stakeholder classification model?

- A. Salience
- B. Influence/impact
- C. Power/interest
- D. Power/influence

**Answer:** A

#### NEW QUESTION 57

An issue log is an input to which Project Human Resource Management process?

- A. Manage Project Team
- B. Acquire Project Team
- C. Plan Human Resource Management
- D. Develop Project Team

**Answer:** A

#### NEW QUESTION 62

Plan Communications Management develops an approach and plan for project communications based on stakeholders' needs and requirements and:

- A. Available organizational assets
- B. Project staff assignments

- C. Interpersonal skills
- D. Enterprise environmental factors

**Answer:** A

#### NEW QUESTION 64

The project management processes are usually presented as discrete processes with defined interfaces, while in practice they:

- A. operate separately.
- B. move together in batches,
- C. overlap and interact.
- D. move in a sequence.

**Answer:** C

#### NEW QUESTION 66

Organizations perceive risks as:

- A. events that will inevitably impact project and organizational objectives.
- B. the effect of uncertainty on their project and organizational objectives.
- C. events which could have a negative impact on project and organizational objectives.
- D. the negative impact of undesired events on their project and organizational objectives.

**Answer:** B

#### NEW QUESTION 67

The formal and informal interaction with others in an organization industry, or professional environment is known as:

- A. negotiation
- B. organizational theory
- C. meeting
- D. networking

**Answer:** D

#### NEW QUESTION 69

The product scope description is used to:

- A. Gain stakeholders support for the project.
- B. Document the characteristics of the product.
- C. Describe the project in great detail.
- D. Formally authorize the project.

**Answer:** B

#### NEW QUESTION 70

A temporary endeavor that creates a unique product or service is called a:

- A. Project
- B. Plan
- C. Program
- D. Portfolio

**Answer:** A

#### NEW QUESTION 71

The risk management team of a software project has decided that due to the lack of adequate talent in the company, development of a specific part of the system is under high risk, so the team has decided to outsource it. This is an example of which risk response?

- A. Transfer
- B. Share
- C. Avoid
- D. Accept

**Answer:** A

#### NEW QUESTION 72

Which of the following processes includes prioritizing risks for subsequent further analysis or action by assessing and combining their probability of occurrence and impact?

- A. Qualitative risk analysis
- B. Quantitative risk analysis
- C. Risk management planning
- D. Risk response planning

**Answer:** A

**NEW QUESTION 73**

Soft logic is also known as what type of dependency?

- A. External
- B. Discretionary
- C. Mandatory
- D. Internal

**Answer:** B

**NEW QUESTION 78**

Projects that share common outcomes, collective capability, knowledge, or skills are often grouped into a:

- A. portfolio
- B. program
- C. selection
- D. sub portfolio

**Answer:** B

**NEW QUESTION 80**

What risk technique is used to quantify the probability and impact of risks on project objectives?

- A. Expert judgment
- B. Risk registry
- C. Risk response planning
- D. Interviewing

**Answer:** D

**NEW QUESTION 81**

Which is an enterprise environmental factor?

- A. Marketplace conditions
- B. Policies and procedures
- C. Project files from previous projects
- D. Lessons learned from previous projects

**Answer:** A

**NEW QUESTION 85**

Which characteristics do effective project managers possess?

- A. Project management knowledge, performance skills, and personal effectiveness
- B. Preparedness, project management knowledge, and personality characteristics
- C. General management, preparedness, and project management knowledge
- D. Assertiveness, collaboration, and performance skills

**Answer:** A

**NEW QUESTION 90**

What is the probability of occurrence if the risk rating is 0.56 and the impact if the risk does occur is very high (0.80)?

- A. 0.45
- B. 0.56
- C. 0.70
- D. 1.36

**Answer:** C

**NEW QUESTION 92**

Which process numerically analyzes the effect of identified risks on overall project objectives?

- A. Plan Risk Management
- B. Plan Risk Responses
- C. Perform Quantitative Risk Analysis
- D. Perform Qualitative Risk Analysis

**Answer:** C

**NEW QUESTION 94**

The project charter is an input to which process?



- A. Develop Project Charter
- B. Develop Project Management Plan
- C. Monitor and Control Project Work
- D. Perform Integrated Change Control

**Answer:** B

**NEW QUESTION 97**

Which Control Scope input is compared to actual results to determine if corrective action is required for the project?

- A. Scope baseline
- B. Scope management plan
- C. Change management plan
- D. Cost baseline

**Answer:** A

**NEW QUESTION 99**

A stakeholder expresses a need not known to the project manager. The project manager most likely missed a step in which stakeholder management process?

- A. Plan Stakeholder Management
- B. Identify Stakeholders
- C. Manage Stakeholder Engagement
- D. Control Stakeholder Engagement

**Answer:** A

**NEW QUESTION 104**

Stakeholders can be identified in later stages of the project because the Identify Stakeholders process should be:

- A. Continuous
- B. Discrete
- C. Regulated
- D. Arbitrary

**Answer:** A

**NEW QUESTION 109**

In which Project Management Process Group is the project charter developed?

- A. Monitoring and Controlling
- B. Executing
- C. Initiating
- D. Planning

**Answer:** C

**NEW QUESTION 112**

Which of the following tools and techniques is used in the Verify Scope process?

- A. Inspection
- B. Variance analysis
- C. Expert judgment
- D. Decomposition

**Answer:** A

**NEW QUESTION 113**

Projects are separated into phases or subprojects; these phases include:

- A. feasibility study, concept development, design, and prototype.
- B. initiate, plan, execute, and monitor.
- C. Develop Charter, Define Activities, Manage Stakeholder Expectations, and Report Performance.
- D. Identify Stakeholders, develop concept, build, and test.

**Answer:** A

**NEW QUESTION 116**

Prioritizing risks for further analysis or action by assessing and combining their probability of occurrence and impact takes place in which process?

- A. Monitor and Control Risks
- B. Plan Risk Management
- C. Perform Qualitative Risk Analysis
- D. Perform Quantitative Risk Analysis



**Answer:** C

**NEW QUESTION 120**

Which of the following is an output of the Distribute Information process?

- A. Project calendar
- B. Communications management plan
- C. Organizational process assets updates
- D. Project document updates

**Answer:** C

**NEW QUESTION 124**

Which is a tool or technique used in scope definition?

- A. Templates, forms, and standards
- B. Change requests
- C. Stakeholder analysis
- D. Project assumptions

**Answer:** C

**NEW QUESTION 128**

When a project is undertaken to reduce defects in a product or service, the objective of the project is to create a/an:

- A. improvement
- B. program
- C. result
- D. portfolio

**Answer:** A

**NEW QUESTION 132**

Risk exists the moment that a project is:

- A. planned.
- B. conceived.
- C. chartered.
- D. executed.

**Answer:** B

**NEW QUESTION 135**

The degree of uncertainty an entity is willing to take on in anticipation of a reward is known as its risk:

- A. management
- B. response
- C. tolerance
- D. appetite

**Answer:** D

**NEW QUESTION 139**

Which technique is commonly used for the Perform Quantitative Risk Analysis process?

- A. Brainstorming
- B. Strategies for opportunities
- C. Decision tree analysis
- D. Risk data quality assessment

**Answer:** C

**NEW QUESTION 144**

Activity resource requirements and resource breakdown structure are outputs from what Project Time Management process?

- A. Schedule Control
- B. Activity Definition
- C. Schedule Development
- D. Activity Resource Estimating

**Answer:** D

**NEW QUESTION 149**

Most experienced project managers know that:

- A. every project requires the use of all processes in the PMBOK® Guide.
- B. there is no single way to manage a project.
- C. project management techniques are risk free.
- D. there is only one way to manage projects successfully.

**Answer:** B

#### NEW QUESTION 152

Which stakeholder approves a project's result?

- A. Customer
- B. Sponsor
- C. Seller
- D. Functional manager

**Answer:** A

#### NEW QUESTION 154

Which type of probability distribution is used to represent uncertain events such as the outcome of a test or a possible scenario in a decision tree?

- A. Uniform
- B. Continuous
- C. Discrete
- D. Linear

**Answer:** C

#### NEW QUESTION 157

When addressing roles and responsibilities, which item ensures that the staff has the skills required to complete project activities?

- A. Authority
- B. Role
- C. Competency
- D. Responsibility

**Answer:** C

#### NEW QUESTION 162

Which of the following is a narrative description of products, services, or results to be delivered by a project?

- A. Project statement of work
- B. Business case
- C. Accepted deliverable
- D. Work performance information

**Answer:** A

#### NEW QUESTION 167

What causes replanning of the project scope?

- A. Project document updates
- B. Project scope statement changes
- C. Variance analysis
- D. Change requests

**Answer:** D

#### NEW QUESTION 169

Which is an input to the Scope Verification Process?

- A. Performance report
- B. Work breakdown structure
- C. Requested changes
- D. Project scope statement

**Answer:** D

#### NEW QUESTION 172

Which of the following statements best describes the influence of stakeholders and the cost of changes as project time advances?

- A. The influence of the stakeholders increases, the cost of changes increases.
- B. The influence of the stakeholders decreases, the cost of changes increases.
- C. The influence of the stakeholders increases, the cost of changes decreases.
- D. The influence of the stakeholders decreases, the cost of changes decreases.

**Answer:** B

**NEW QUESTION 174**

Scope verification is PRIMARILY concerned with which of the following?

- A. Acceptance of the work deliverables.
- B. Accuracy of the work deliverables.
- C. Approval of the scope statement.
- D. Accuracy of the work breakdown structure.

**Answer:** A

**NEW QUESTION 178**

The probability and impact matrix is primarily used to:

- A. Quantify risk issues for trends during a quality audit.
- B. Develop a risk register for risk planning.
- C. Evaluate each risk's importance and priority during Perform Qualitative Risk Analysis.
- D. Define risk and compare impacts during Perform Quantitative Risk Analysis.

**Answer:** C

**NEW QUESTION 182**

Which input to the Plan Risk Management process provides information on high-level risks?

- A. Project charter
- B. Enterprise environmental factors
- C. Stakeholder register
- D. Organizational process assets

**Answer:** A

**NEW QUESTION 187**

The project scope statement and resource calendars are inputs to which Project Time Management process?

- A. Sequence Activities
- B. Estimate Activity Resources
- C. Develop Schedule
- D. Control Schedule

**Answer:** C

**NEW QUESTION 189**

Which of the following Process Groups covers all Project Management Knowledge Areas?

- A. Executing
- B. Monitoring and Controlling
- C. Planning
- D. Initiating

**Answer:** C

**NEW QUESTION 190**

An element of the project scope statement is:

- A. Acceptance criteria.
- B. A stakeholder list.
- C. A summary budget,
- D. High-level risks.

**Answer:** A

**NEW QUESTION 191**

At which point of the project is the uncertainty the highest and the risk of failing the greatest?

- A. Final phase of the project
- B. Start of the project
- C. End of the project
- D. Midpoint of the project

**Answer:** B

**NEW QUESTION 193**

The scope of a project cannot be defined without some basic understanding of how to create the specified:

- A. objectives
- B. schedule
- C. product
- D. approach

**Answer:** C

#### NEW QUESTION 194

Inputs to Identifying Stakeholders include:

- A. Project charter, procurement documents, enterprise environmental factors, and organizational process assets.
- B. Project charter, stakeholder analysis, enterprise environmental factors, and organizational process assets.
- C. Project charter, stakeholder analysis, enterprise environmental factors, and stakeholder management strategy.
- D. Project charter, procurement documents, expert judgment, and organizational process assets.

**Answer:** A

#### NEW QUESTION 197

Which of the following terms indicates a deliverable-oriented hierarchical decomposition of the project work?

- A. WBS directory
- B. Activity list
- C. WBS
- D. Project schedule

**Answer:** C

#### NEW QUESTION 198

One of the objectives of a quality audit is to:

- A. highlight the need for root cause analysis.
- B. share the process documentation among stakeholders.
- C. offer assistance with non-value-added activities.
- D. identify all of the gaps or shortcomings.

**Answer:** D

#### NEW QUESTION 201

What is project management?

- A. A logical grouping of project management inputs, outputs, tools, and techniques
- B. Applying knowledge, skills, tools, and techniques to project activities to meet the project requirements
- C. Launching a process that can result in the authorization of a new project
- D. A formal, approved document that defines how the project is executed, monitored, and controlled

**Answer:** B

#### NEW QUESTION 203

PMBOI Guide is a standard that describes:

- A. product-oriented processes.
- B. project management processes.
- C. product-oriented and project management processes.
- D. program management and project management processes.

**Answer:** B

#### NEW QUESTION 205

A weighting system is a tool for which area of Conduct Procurements?

- A. Plan contracting
- B. Requesting seller responses
- C. Selecting seller's
- D. Planning purchase and acquisition

**Answer:** C

#### NEW QUESTION 208

In which process group is the scope first defined?

- A. Initiating
- B. Planning
- C. Executing
- D. Controlling

**Answer:** A

**NEW QUESTION 210**

Which activity is an input to the select sellers process?

- A. Organizational process assets
- B. Resource availability
- C. Change control process
- D. Team performance assessment

**Answer:** A

**NEW QUESTION 212**

Which of the following are an enterprise environmental factor that can influence the Identify Risks process?

- A. Work performance reports
- B. Assumptions logs
- C. Network diagrams
- D. Academic studies

**Answer:** D

**NEW QUESTION 213**

Stakeholder management strategy is an output of:

- A. Plan Communications.
- B. Distribute Information.
- C. Report Performance.
- D. Identify Stakeholders.

**Answer:** D

**NEW QUESTION 215**

Which of the following processes are part of the Project Integration Management Knowledge Area?

- A. Develop Project Management Plan, Collect Requirements, Create WBS
- B. Develop Project Management Plan, Control Scope, Develop Schedule
- C. Develop Project Charter, Define Scope, Estimate Costs
- D. Develop Project Charter, Direct and Manage Project Execution, Close Project or Phase

**Answer:** D

**NEW QUESTION 220**

Which type of contract is a hybrid of both a cost-reimbursable and a fixed-price contract?

- A. Cost Plus Award Fee Contract (CPAF)
- B. Firm-Fixed -Price Contract (FFP)
- C. Time and Material Contract (T&M)
- D. Cost Plus Incentive Fee Contract (CPIF)

**Answer:** C

**NEW QUESTION 222**

Identify Stakeholders is the process of identifying all of the people or organizations impacted by the project and documenting relevant information regarding their interests in, involvement in, and impact on the project:

- A. manager.
- B. success.
- C. deadline.
- D. scope.

**Answer:** B

**NEW QUESTION 224**

The process of prioritizing risks for further analysis or action is known as:

- A. Plan Risk Management.
- B. Plan Risk Responses.
- C. Perform Qualitative Risk Analysis.
- D. Perform Quantitative Risk Analysis.

**Answer:** C

**NEW QUESTION 225**

Which of the following is an information gathering technique in Identify Risks?

- A. Influence diagrams
- B. Brainstorming
- C. Assumption analysis
- D. SWOT analysis

**Answer:** B

#### NEW QUESTION 227

Which document describes the necessary information to determine if a project is worth the required investment?

- A. Cost baseline
- B. Service level agreement
- C. Memorandum of understanding
- D. Business case

**Answer:** D

#### NEW QUESTION 232

The purpose of developing a project scope management plan is to:

- A. Manage the timely completion of the project.
- B. Ensure that the project includes all of the work required.
- C. Make sure the project will satisfy the needs for which it was begun.
- D. Reduce the risk of negative events in the project.

**Answer:** B

#### NEW QUESTION 237

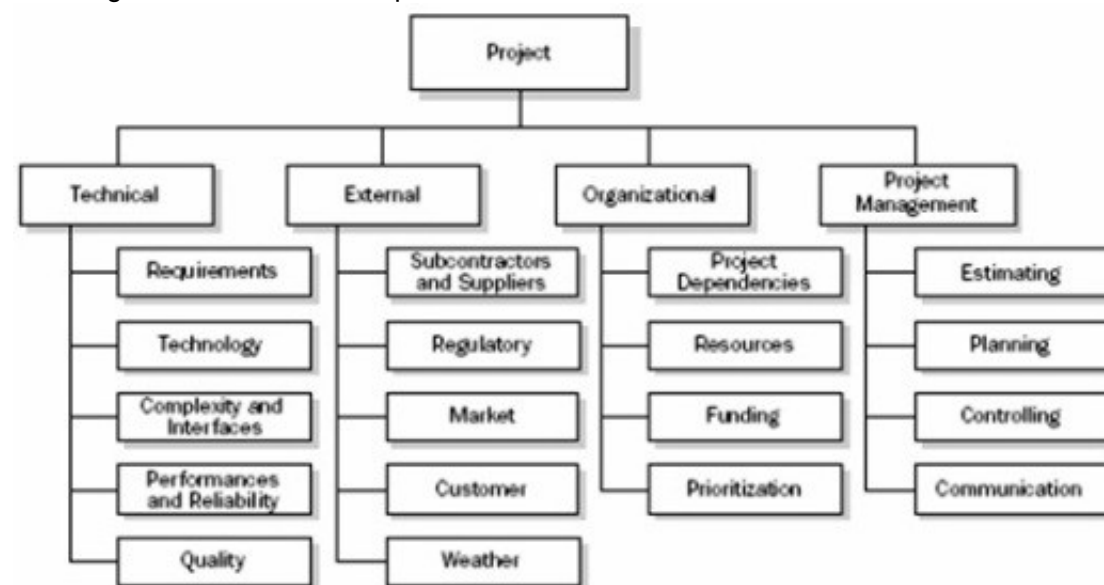
Projects are undertaken by an organization to support the:

- A. Product performance.
- B. Budget process.
- C. Collective capabilities.
- D. Organizational strategy.

**Answer:** D

#### NEW QUESTION 240

The diagram below is an example of a:



- A. Risk breakdown structure (RBS).
- B. Project team.
- C. SWOT Analysis.
- D. Work breakdown structure (WBS).

**Answer:** A

#### NEW QUESTION 242

Technical capability, past performance, and intellectual property rights are examples of:

- A. performance measurement criteria
- B. source selection criteria
- C. product acceptance criteria
- D. phase exit criteria

**Answer:** B

#### NEW QUESTION 243

The organization's perceived balance between risk taking and risk avoidance is reflected in the risk:

- A. Responses
- B. Appetite
- C. Tolerance
- D. Attitude

**Answer:** A

#### NEW QUESTION 248

Which of the following methods is a project selection technique?

- A. Flowcharting
- B. Earned value
- C. Cost-benefit analysis
- D. Pareto analysis

**Answer:** C

#### NEW QUESTION 250

The project manager notes that stakeholders are aware of the project and potential impacts and are actively engaged in ensuring that the project is a success. The engagement level of the stakeholders should be classified as:

- A. Supportive
- B. Leading
- C. Neutral
- D. Resistant

**Answer:** B

#### NEW QUESTION 251

Which document in the project management plan can be updated in the Plan Procurement Management process?

- A. Budget estimates
- B. Risk matrix
- C. Requirements documentation
- D. Procurement documents

**Answer:** C

#### NEW QUESTION 253

Requirements documentation, requirements management plan, and requirements traceability matrix are all outputs of which process?

- A. Control Scope
- B. Collect Requirements
- C. Create WBS
- D. Define Scope

**Answer:** B

#### NEW QUESTION 254

Define Activities and Estimate Activity Resources are processes in which project management Knowledge Area?

- A. Project Time Management
- B. Project Cost Management
- C. Project Scope Management
- D. Project Human Resource Management

**Answer:** A

#### NEW QUESTION 257

In the Initiating Process Group, at what point does the project become officially authorized?

- A. When the project charter is signed
- B. When all the stakeholders agree on the scope of the project
- C. When the project manager is appointed
- D. When the necessary finance or funding is obtained

**Answer:** A

#### NEW QUESTION 261

Which cost is associated with nonconformance?

- A. Liabilities



- B. Inspections
- C. Training
- D. Equipment

**Answer:** A

#### NEW QUESTION 262

The risk response strategy in which the project team acts to reduce the probability of occurrence or impact of a risk is known as:

- A. exploit
- B. avoid
- C. mitigate
- D. share

**Answer:** C

#### NEW QUESTION 267

An input to the Identify Risks process is the:

- A. Risk register.
- B. Risk probability and impact assessment.
- C. Communications management plan.
- D. Risk management plan.

**Answer:** D

#### NEW QUESTION 270

Which tools or techniques will the project manager use for developing the project team?

- A. Negotiation
- B. Roles and responsibilities
- C. Recognition and rewards
- D. Prizing and promoting

**Answer:** C

#### NEW QUESTION 275

One of the key benefits of the Plan Human Resource Management process is that it:

- A. outlines team selection guidelines and team member responsibilities.
- B. establishes project roles and responsibilities.
- C. improves teamwork, interpersonal skills, and competencies.
- D. provides an accurate appraisal of team member performance.

**Answer:** B

#### NEW QUESTION 277

Which process involves defining, preparing, and coordinating all subsidiary plans and integrating them into a comprehensive plan?

- A. Direct and Manage Project Work
- B. Develop Project Management Plan
- C. Plan Quality Management
- D. Monitor and Control Project Work

**Answer:** B

#### NEW QUESTION 282

The process of identifying and documenting project roles, responsibilities, required skills, and reporting relationships and creating a staffing management plan is known as:

- A. Develop Project Team.
- B. Manage Project Team.
- C. Acquire Project Team.
- D. Plan Human Resource Management.

**Answer:** D

#### NEW QUESTION 287

The definition of when and how often the risk management processes will be performed throughout the project life cycle is included in which risk management plan component?

- A. Timing
- B. Methodology
- C. Risk categories
- D. Budgeting

**Answer:** A

**NEW QUESTION 291**

Which of the following are inputs to Activity Definition?

- A. Project Scope Statement and Work Breakdown Structure
- B. Activity list and Arrow Diagram
- C. Change Requests Lists and Organizational Process Assets
- D. Project Management Plan and Resource Availability

**Answer:** A

**NEW QUESTION 296**

An input to the Plan Cost Management process is:

- A. Cost estimates.
- B. Resource calendars,
- C. The project charter,
- D. The risk register.

**Answer:** C

**NEW QUESTION 298**

Which process involves documenting the actions necessary to define, prepare, integrate, and coordinate all subsidiary plans?

- A. Collect Requirements
- B. Direct and Manage Project Execution
- C. Monitor and Control Project Work
- D. Develop Project Management Plan

**Answer:** D

**NEW QUESTION 302**

What is an objective of the Develop Project Team process?

- A. Feelings of trust and improved cohesiveness
- B. Ground rules for interaction
- C. Enhanced resource availability
- D. Functional managers becoming more involved

**Answer:** A

**NEW QUESTION 305**

The specific technique for identifying a problem, discovering the causes that lead to it, and developing preventive actions is:

- A. Inspection
- B. Use of quality checklists
- C. Root cause analysis
- D. Use of matrix diagrams

**Answer:** C

**NEW QUESTION 306**

A project manager is appointed full-time to a project and is given full-time administrative staff and full-time project team members. This situation describes which type of organizational structure?

- A. Projectized
- B. Weak matrix
- C. Functional
- D. Balanced matrix

**Answer:** A

**NEW QUESTION 307**

Which tool or technique is an examination of industry and specific vendor capabilities?

- A. Independent estimates
- B. Market research
- C. Analytical techniques
- D. Bidder conferences

**Answer:** B

**NEW QUESTION 310**

Projects can be divided into phases to provide better management control. Collectively, what are these phases known as?

- A. Complete project phase
- B. Project life
- C. The project life cycle
- D. Project cycle

**Answer: C**

#### NEW QUESTION 311

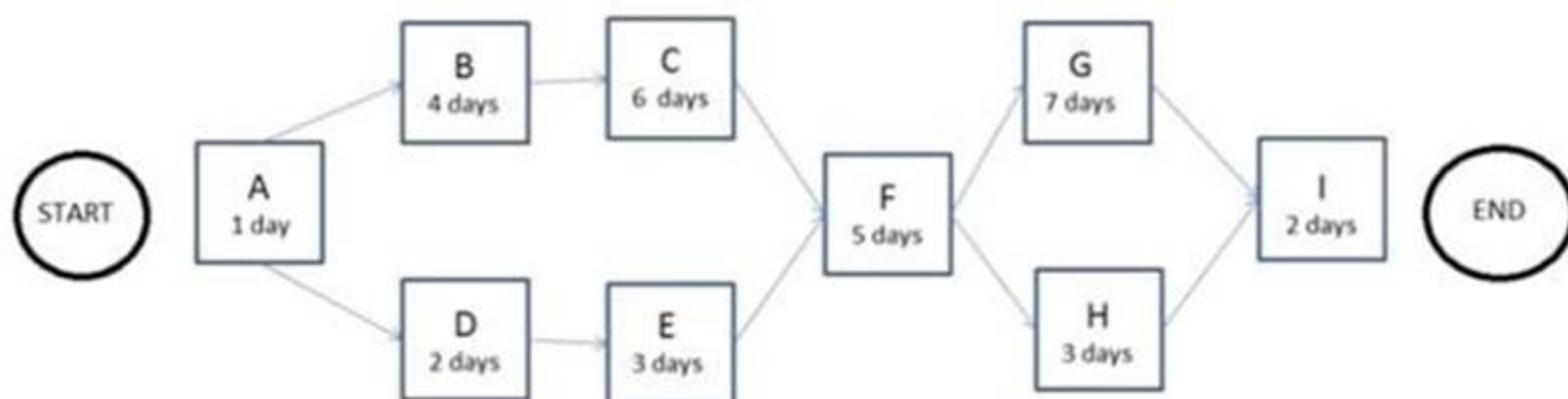
Which of the following is used to illustrate the connections between work packages or activities and project team members?

- A. Hierarchical-type charts (HTC)
- B. Organizational breakdown structure (OBS)
- C. Work breakdown structure (WBS)
- D. Responsibility assignment matrix (RAM)

**Answer: D**

#### NEW QUESTION 315

The following is a network diagram for a project.



The free float for Activity E is how many days?

- A. 2
- B. 3
- C. 5
- D. 8

**Answer: C**

#### NEW QUESTION 318

When an activity cannot be estimated with a reasonable degree of confidence, the work within the activity is decomposed into more detail using which type of estimating?

- A. Bottom-up
- B. Parametric
- C. Analogous
- D. Three-point

**Answer: A**

#### NEW QUESTION 319

The only Process Group that comprises processes that typically occur from the beginning to the end of the project life cycle is:

- A. Planning.
- B. Executing,
- C. Monitoring and Controlling.
- D. Closing.

**Answer: A**

#### NEW QUESTION 322

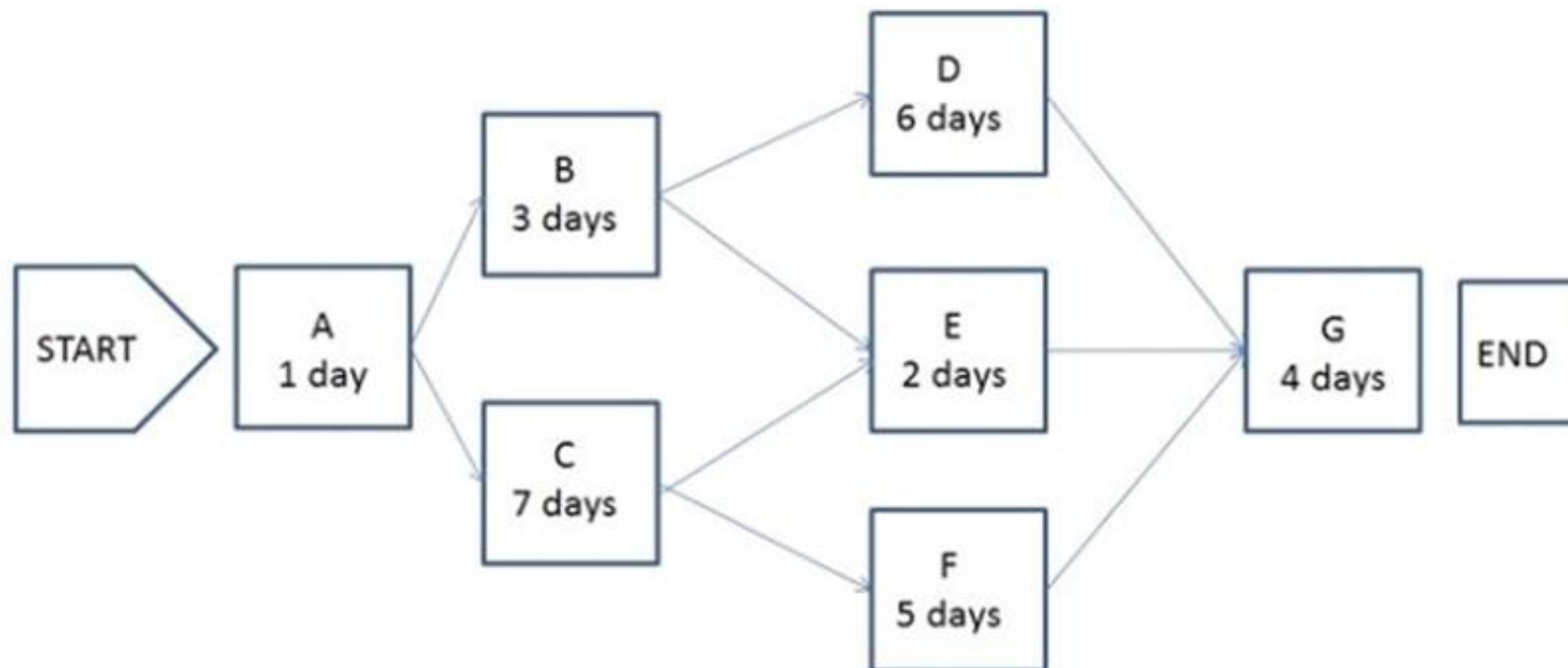
Which input will be used when tasked with developing the human resource plan?

- A. Project management plan
- B. Activity resource requirements
- C. Resource calendar
- D. Project staff assignments

**Answer: B**

#### NEW QUESTION 326

The following is a network diagram for a project.



What is the critical path for the project?

- A. A-B-D-G
- B. A-B-E-G
- C. A-C-F-G
- D. A-C-E-G

**Answer:** C

#### NEW QUESTION 330

Which type of chart is a graphic representation of a process showing the relationships among process steps?

- A. Control
- B. Bar
- C. Flow
- D. Pareto

**Answer:** C

#### NEW QUESTION 331

Quality metrics are an output of which process?

- A. Plan Quality
- B. Perform Quality Control
- C. Perform Quality Assurance
- D. Perform Qualitative Risk Analysis

**Answer:** A

#### NEW QUESTION 333

Which is used to solicit proposals from prospective sellers?

- A. Procurement statement of work
- B. Resource calendars
- C. Procurement document
- D. Independent estimates

**Answer:** C

#### NEW QUESTION 336

At which stage of the project should certain factors such as the unavailability of human resources due to constraint be considered?

- A. Initiation
- B. Execution
- C. Planning
- D. Monitoring and Controlling

**Answer:** C

#### NEW QUESTION 339

Which Project Time Management process includes bottom-up estimating as a tool or technique?

- A. Estimate Activity Resources
- B. Sequence Activities
- C. Estimate Activity Durations
- D. Develop Schedule

**Answer:** A

**NEW QUESTION 343**

When can pre-assignment of project team members occur?

- A. When the project uses capital expenditures
- B. When the required staff can be acquired from outside sources
- C. When the project would be ignored due to travel expenses
- D. When the project is the result of specific people being promised as part of a competitive proposal

**Answer:** D

**NEW QUESTION 348**

The processes required to establish the scope of the project, refine the objectives, and define the course of action required to attain the objectives that the project has been undertaken to achieve are grouped within which Process Group?

- A. Initiating
- B. Planning
- C. Executing
- D. Monitoring and Controlling

**Answer:** B

**NEW QUESTION 349**

A project in which the scope, time, and cost of delivery are determined as early as possible is following a life cycle that is:

- A. Adaptive
- B. Predictive
- C. Incremental
- D. Iterative

**Answer:** B

**NEW QUESTION 354**

Which of the following lists contain processes that are included within Project Procurement Management?

- A. Plan purchases and acquisitions, plan contracting, request seller responses, select sellers
- B. Plan purchases and acquisitions, request seller responses, select sellers, schedule control
- C. Plan purchases and acquisitions, acquire project team, request seller responses, select sellers
- D. Plan purchases and acquisitions, acquire project team, contract approval, select sellers

**Answer:** A

**NEW QUESTION 357**

Which tool is used to develop technical details within the project management plan?

- A. Expert Judgment
- B. Project Management Methodology
- C. Project Management Information
- D. Project Selection Methods

**Answer:** A

**NEW QUESTION 358**

Definitions of probability and impact, revised stakeholder tolerances, and tracking are components of which subsidiary plan?

- A. Cost management plan
- B. Quality management plan
- C. Communications management plan
- D. Risk management plan

**Answer:** D

**NEW QUESTION 362**

Project Scope Management is primarily concerned with:

- A. Developing a detailed description of the project and product.
- B. Determining how requirements will be analyzed, documented, and managed.
- C. Defining and controlling what is and is not included in the project.
- D. Formalizing acceptance of the completed project deliverables.

**Answer:** C

**NEW QUESTION 367**

Which provides the basic framework for managing a project?

- A. Project life cycle
- B. Work breakdown structure (WBS)
- C. Enterprise environmental factors
- D. Project initiation

**Answer:** A

#### NEW QUESTION 371

The milestone list is an input to which process from the Planning Process Group?

- A. Define Activities
- B. Estimate Activity Durations
- C. Estimate Activity Resources
- D. Sequence Activities

**Answer:** D

#### NEW QUESTION 372

The staffing management plan is part of the:

- A. organizational process assets.
- B. resource calendar.
- C. human resource plan.
- D. Develop Project Team process.

**Answer:** C

#### NEW QUESTION 377

Activity cost estimates are quantitative assessments of the probable costs required to:

- A. Create WBS.
- B. complete project work.
- C. calculate costs.
- D. Develop Project Management Plan.

**Answer:** B

#### NEW QUESTION 379

An input of the Create WBS process is:

- A. requirements documentation.
- B. scope baseline.
- C. project charter.
- D. validated deliverables.

**Answer:** A

#### NEW QUESTION 380

Which project document is updated in the Control Stakeholder Engagement process?

- A. Project reports
- B. Issue log
- C. Lessons learned documentation
- D. Work performance information

**Answer:** B

#### NEW QUESTION 384

Project deliverables that have been completed and checked for correctness through the Control Quality process are known as:

- A. Verified deliverables.
- B. Validated deliverables.
- C. Acceptance criteria.
- D. Activity resource requirements.

**Answer:** A

#### NEW QUESTION 388

Taking out insurance in relation to risk management is called what?

- A. Transference
- B. Avoidance
- C. Exploring

D. Mitigation

**Answer:** A

**NEW QUESTION 389**

When does the project team determine which dependencies are discretionary?

- A. Before the Define Activities process
- B. During the Define Activities process
- C. Before the Sequence Activities process
- D. During the Sequence Activities process

**Answer:** D

**NEW QUESTION 390**

Which of the following is an output of the Information Distribution Process?

- A. Project calendar
- B. Communication management plan
- C. Requested changes
- D. Communication requirement plan

**Answer:** C

**NEW QUESTION 395**

Which items are components of a project management plan?

- A. Change management plan, process improvement plan, and scope management plan
- B. Agreements, procurement management plan, and work performance information
- C. Schedule management plan, project schedule, and resource calendars
- D. Scope baseline, project statement of work, and requirements traceability matrix

**Answer:** A

**NEW QUESTION 399**

The Plan Stakeholder Management process belongs to which Process Group?

- A. Executing
- B. Initiating
- C. Planning
- D. Monitoring and Controlling

**Answer:** C

**NEW QUESTION 404**

Which Knowledge Area is concerned with the processes required to ensure timely and appropriate generation, collection, distribution, storage, retrieval, and ultimate disposition of project information?

- A. Project Integration Management
- B. Project Communications Management
- C. Project Information Management System (PIMS)
- D. Project Scope Management

**Answer:** B

**NEW QUESTION 408**

Identifying major deliverables, deciding if adequate cost estimates can be developed, and identifying tangible components of each deliverable are all part of which of the following?

- A. Work breakdown structure
- B. Organizational breakdown structure
- C. Resource breakdown structure
- D. Bill of materials

**Answer:** A

**NEW QUESTION 409**

Risk categorization is a tool or technique used in which process?

- A. Plan Risk Responses
- B. Plan Risk Management
- C. Perform Qualitative Risk Analysis
- D. Perform Quantitative Risk Analysis

**Answer:** C



#### NEW QUESTION 413

Which of the following is an input to Develop Human Resource Plan?

- A. Team performance assessment
- B. Roles and responsibilities
- C. Staffing management plan
- D. Enterprise environmental factors

**Answer:** D

#### NEW QUESTION 415

The primary benefit of the Plan Schedule Management process is that it:

- A. provides guidance to identify time or schedule challenges within the project.
- B. tightly links processes to create a seamless project schedule.
- C. guides how the project schedule will be managed throughout the project.
- D. creates an overview of all activities broken down into manageable subsections.

**Answer:** C

#### NEW QUESTION 416

Which Plan Schedule Management tool or technique may involve choosing strategic options to estimate and schedule the project?

- A. Facilitation techniques
- B. Expert judgment
- C. Analytical techniques
- D. Variance analysis

**Answer:** C

#### NEW QUESTION 420

Progressively elaborating high-level information into detailed plans is performed by the:

- A. project management office
- B. portfolio manager
- C. program manager
- D. project manager

**Answer:** D

#### NEW QUESTION 424

Which tool or technique of Plan Quality involves comparing actual or planned practices to those of other projects to generate ideas for improvement and provide a basis by which to measure performance?

- A. Histogram
- B. Quality audits
- C. Benchmarking
- D. Performance measurement analysis

**Answer:** C

#### NEW QUESTION 426

What is a deliverable-oriented hierarchical decomposition of the work to be executed to accomplish the project objectives and create the required deliverables?

- A. Organizational Breakdown Structure (OBS)
- B. Work Performance Information
- C. Work Package
- D. Work Breakdown Structure (WBS)

**Answer:** D

#### NEW QUESTION 427

A strengths, weaknesses, opportunities, and threats (SWOT) analysis is a tool or technique used in which process?

- A. Identify Risks
- B. Control Risks
- C. Perform Quantitative Risk Analysis
- D. Perform Qualitative Risk Analysis

**Answer:** A

#### NEW QUESTION 429

Which tool or technique is used in Manage Stakeholder Expectations?

- A. Stakeholder management strategy
- B. Communication methods
- C. Issue log
- D. Change requests

**Answer:** B

**NEW QUESTION 431**

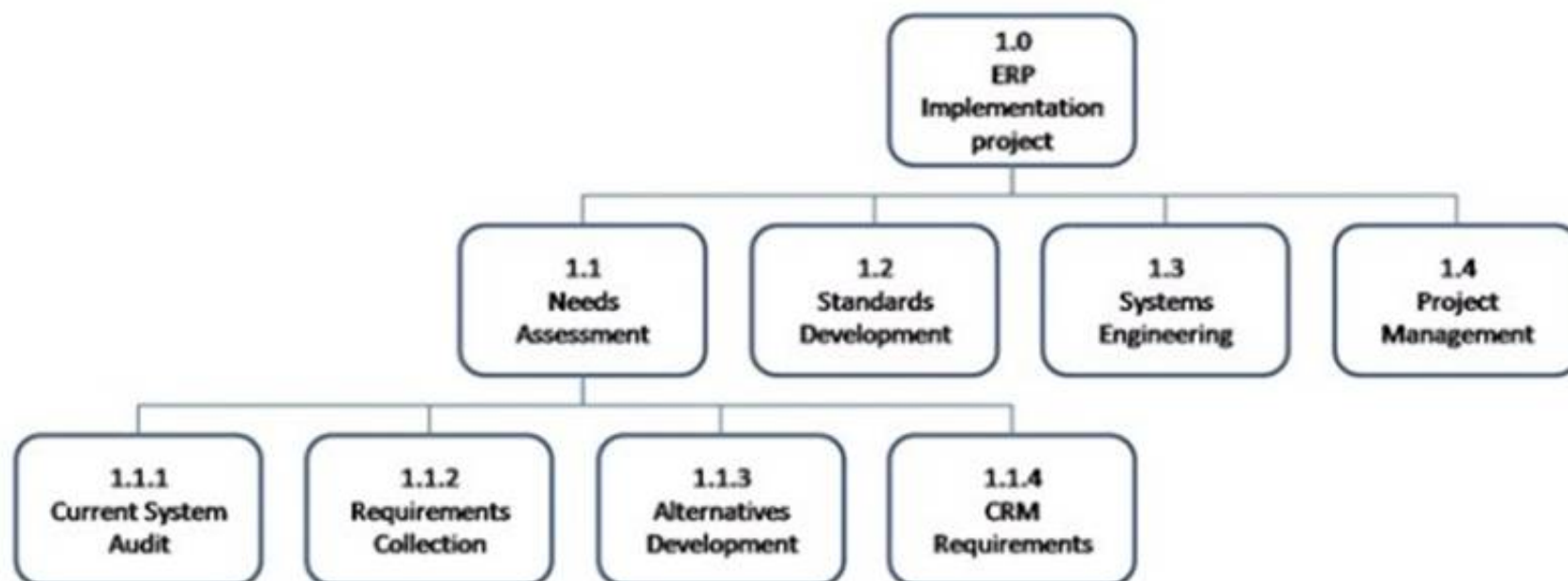
Units of measure, level of precision, level of accuracy, control thresholds, and rules of performance measurement are examples of items that are established in the:

- A. Cost management plan.
- B. Work performance information.
- C. Quality management plan.
- D. Work breakdown structure.

**Answer:** A

**NEW QUESTION 435**

Which type of graphic is displayed below?



- A. Work breakdown structure
- B. Context diagram
- C. Control chart
- D. Pareto diagram

**Answer:** A

**NEW QUESTION 439**

Which process develops options and actions to enhance opportunities and reduce threats to project objectives?

- A. Identify Risks
- B. Control Risks
- C. Plan Risk Management
- D. Plan Risk Responses

**Answer:** D

**NEW QUESTION 440**

The item that provides more detailed descriptions of the components in the work breakdown structure (WBS) is called a WBS:

- A. dictionary.
- B. chart.
- C. report.
- D. register.

**Answer:** A

**NEW QUESTION 445**

A required input for Create WBS is a project:

- A. quality plan.
- B. schedule network.
- C. management document update.
- D. scope statement.

**Answer:** D

**NEW QUESTION 448**

A work package has been scheduled to cost \$1,000 to complete and was to be finished today. As of today, the actual expenditure is \$1,200 and approximately half of the work has been completed. What is the cost variance?

- A. -700
- B. -200
- C. 200
- D. 500

**Answer:** A

**NEW QUESTION 449**

Which action should a project manager take to ensure that the project management plan is effective and current?

- A. Conduct periodic project performance reviews.
- B. Identify quality project standards.
- C. Follow ISO 9000 quality standards.
- D. Complete the quality control checklist.

**Answer:** A

**NEW QUESTION 453**

The planned work contained in the lowest level of work breakdown structure (WBS) components is known as:

- A. Work packages.
- B. Accepted deliverables.
- C. The WBS dictionary.
- D. The scope baseline.

**Answer:** A

**NEW QUESTION 457**

During which process group is the quality policy determined?

- A. Initiating
- B. Executing
- C. Planning
- D. Controlling

**Answer:** C

**NEW QUESTION 458**

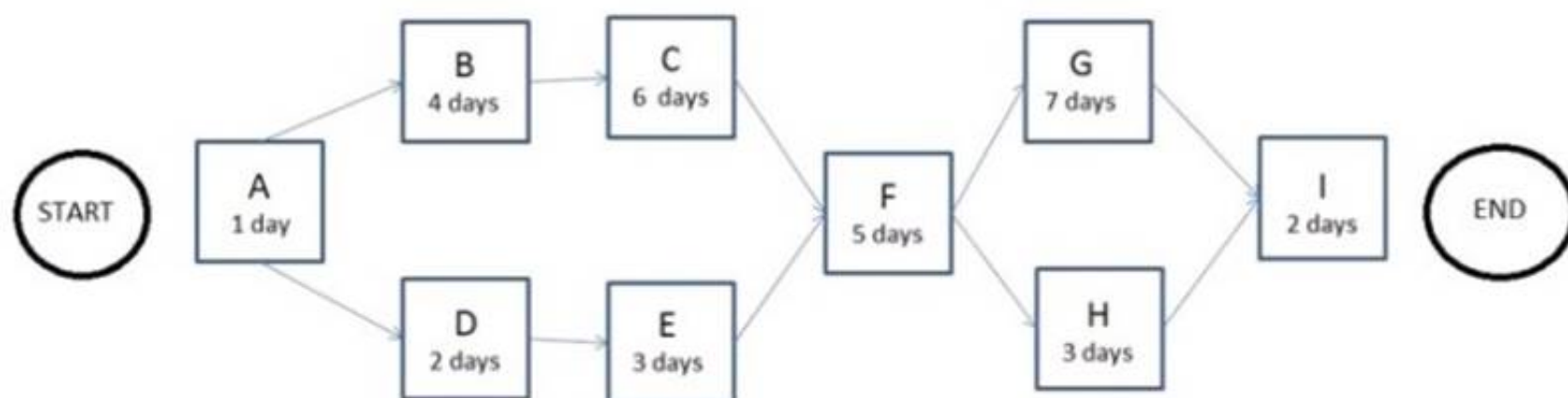
Which is an example of Administer Procurements?

- A. Negotiating the contract
- B. Authorizing contractor work
- C. Developing the statement of work
- D. Establishing evaluation criteria

**Answer:** B

**NEW QUESTION 461**

The following is a network diagram for a project.



What is the critical path for the project?

- A. A-B-C-F-G-I
- B. A-B-C-F-H-I
- C. A-D-E-F-G-I
- D. A-D-E-F-H-I

**Answer:** A

**NEW QUESTION 466**

Which can be used to determine whether a process is stable or has predictable performance?

- A. Matrix diagram
- B. Histogram
- C. Control chart
- D. Flowchart

**Answer:** C

**NEW QUESTION 467**

Stakeholder communication requirements should be included as a component of:

- A. enterprise environmental factors
- B. organizational process assets
- C. the project management plan
- D. the stakeholder register

**Answer:** C

**NEW QUESTION 468**

You are assigned to implement the project control plan. What should you do to ensure the plan is effective and current?

- A. Perform periodic project performance reviews.
- B. Identify quality project standards.
- C. Follow ISO 9000 quality standards.
- D. Complete the quality control checklist.

**Answer:** A

**NEW QUESTION 469**

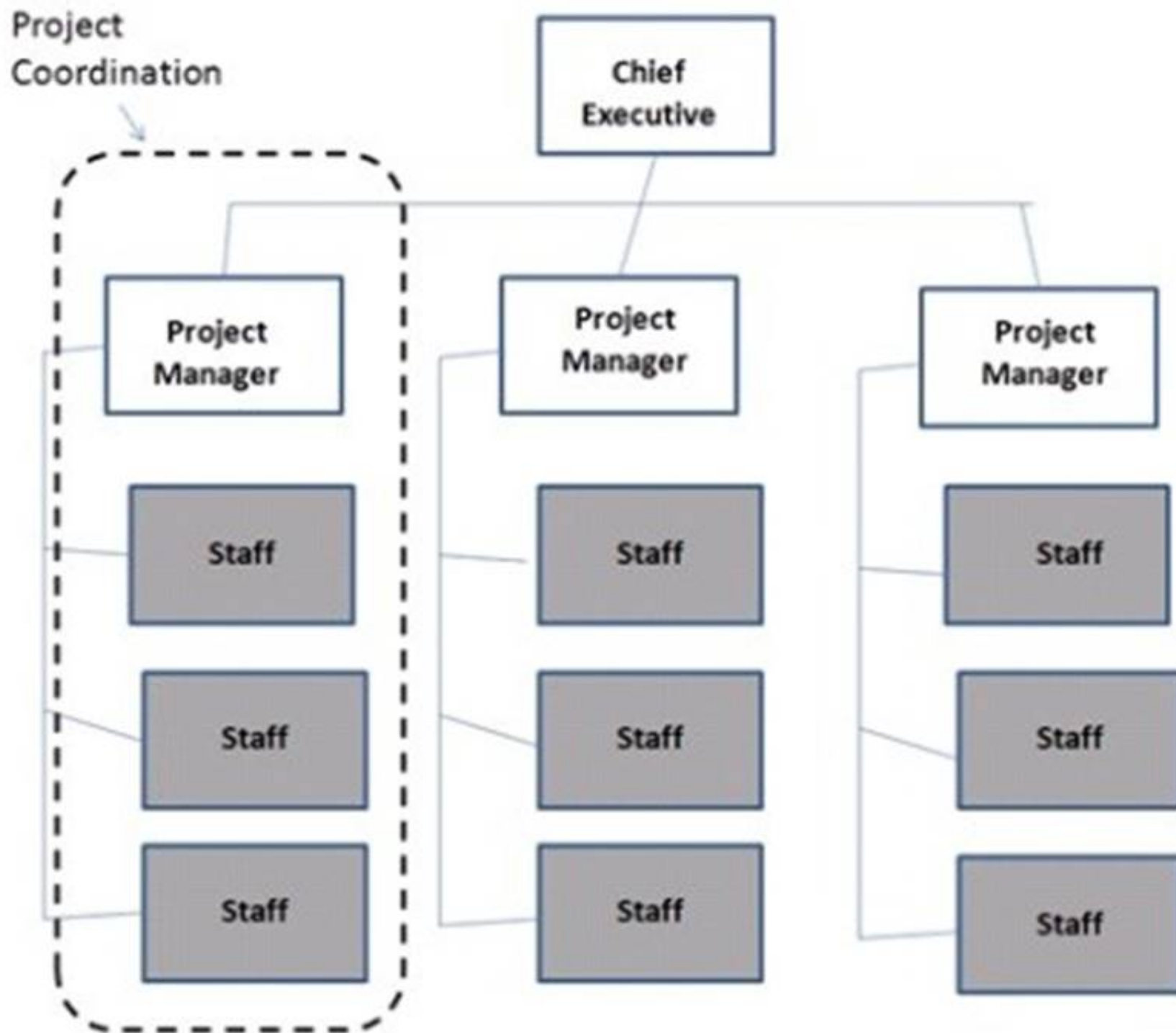
Which basic quality tool is most useful when gathering attributes data in an inspection to identify defects?

- A. Control charts
- B. Pareto diagrams
- C. Ishikavva diagrams
- D. Checksheets

**Answer:** D

**NEW QUESTION 474**

Which type of organizational structure is displayed in the diagram provided?



- A. Balanced matrix
- B. Projectized
- C. Strong matrix
- D. Functional

**Answer: B**

#### NEW QUESTION 475

An input used in developing the communications management plan is:

- A. Communication models.
- B. Enterprise environmental factors.
- C. Organizational communications,
- D. Organizational cultures and styles.

**Answer: B**

#### NEW QUESTION 480

Which tool or technique can a project manager use to select in advance a team member who will be crucial to the task?

- A. Acquisition
- B. Negotiation
- C. Virtual team
- D. Pre-assignment

**Answer: D**

#### NEW QUESTION 482

What defines the portion of work included in a contract for items being purchased or acquired?

- A. Procurement management plan
- B. Evaluation criteria
- C. Work Breakdown Structure (WBS)
- D. Contract Statement of Work (SOW)

Answer: D

#### NEW QUESTION 486

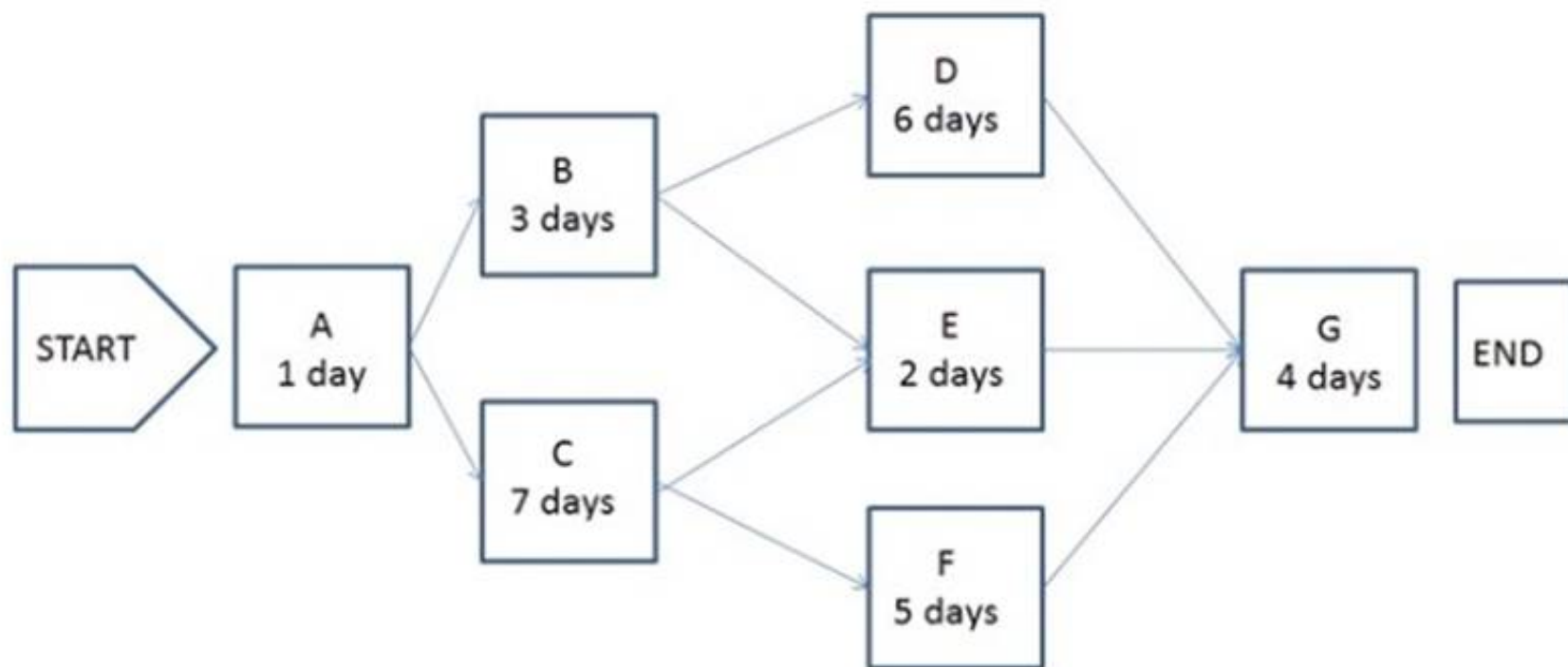
In a construction project schedule, what is the logical relationship between the delivery of the concrete materials and the pouring of concrete?

- A. Start-to-start (SS)
- B. Start-to-finish (SF)
- C. Finish-to-finish (FF)
- D. Finish-to-start (FS)

Answer: D

#### NEW QUESTION 488

The following is a network diagram for a project.



The shortest non-critical path for the project is how many days in duration?

- A. 10
- B. 12
- C. 14
- D. 16

Answer: A

#### NEW QUESTION 489

Which of the following tools or techniques is used for Estimate Activity Duration?

- A. Critical path
- B. Rolling Wave
- C. PDM
- D. Parametric

Answer: D

#### NEW QUESTION 494

A tool and technique used during the Create WBS process is:

- A. decomposition
- B. expert judgment
- C. inspection
- D. variance analysis

Answer: A

#### NEW QUESTION 498

Portfolio Management is management of:

- A. a project by dividing the project into more manageable sub-projects.
- B. a project by utilizing a portfolio of general management skills such as planning, organizing, staffing, executing, and controlling.
- C. all projects undertaken by a company.
- D. a collection of projects that are grouped together to facilitate effective management and meet strategic business objectives.

Answer: D

#### NEW QUESTION 502

Which of the following are placed at selected points in the work breakdown structure (WBS) for performance measurement?



- A. Control accounts
- B. Milestones
- C. Management points
- D. Measurement points

**Answer:** A

**NEW QUESTION 506**

Which Manage Communications tool or technique focuses on identifying and managing barriers?

- A. Communication methods
- B. Information technology
- C. Communication models
- D. Information management systems

**Answer:** C

**NEW QUESTION 507**

Which tool is used to develop technical details within the project management plan?

- A. Expert judgment
- B. Project management methodology
- C. Project management information system (PMIS)
- D. Project selection methods

**Answer:** A

**NEW QUESTION 509**

Which process determines the risks that may affect the project and documents their characteristics?

- A. Control Risks
- B. Plan Risk Management
- C. Plan Risk Responses
- D. Identify Risks

**Answer:** D

**NEW QUESTION 511**

Which of the following are outputs of Develop Project Team?

- A. Human resources plan changes and project staff assignment updates
- B. Project management plan updates and enterprise environmental factor updates
- C. Resource calendars and project management plan updates
- D. Team performance assessments and enterprise environmental factor updates

**Answer:** D

**NEW QUESTION 513**

Outputs of the Control Communications process include:

- A. expert judgment and change requests.
- B. work performance information and change requests.
- C. organizational process asset updates and an issue log.
- D. project management plan updates and an issue log.

**Answer:** B

**NEW QUESTION 518**

Organizations manage portfolios based on which of the following types of plans?

- A. Strategic
- B. Project
- C. Program
- D. Operational

**Answer:** A

**NEW QUESTION 521**

Which stakeholder classification model groups stakeholders based on their level of authority and their active involvement in the project?

- A. Power/influence grid
- B. Power/interest grid
- C. Influence/impact grid
- D. Salience model



**Answer:** A

**NEW QUESTION 526**

Changes to formally controlled documentation, plans, etc. to reflect modified or additional ideas or content are known as:

- A. updates.
- B. defect repairs.
- C. preventive actions.
- D. corrective actions.

**Answer:** A

**NEW QUESTION 527**

What is the function of a Project Management Office (PMO)?

- A. To focus on the coordinated planning, prioritization, and execution of projects and subprojects that are tied to the parent organizations or the client's overall business objectives.
- B. To coordinate and manage the procurement of projects relevant to the parent organization's business objectives and to administer the project charters accordingly.
- C. To administer performance reviews for the project manager and the project team members and to handle any personnel and payroll issues.
- D. To focus on the specified project objectives and to manage the scope, schedule, cost, and quality of the work packages.

**Answer:** A

**NEW QUESTION 531**

While preparing the project management plan on a weekly basis, the project manager indicates the intention to provide an issues report to the staff via e-mail. In which part of the plan will this type of information be included?

- A. Communications management plan
- B. Human resource plan
- C. Quality management plan
- D. Procurement management plan

**Answer:** A

**NEW QUESTION 532**

Grouping the stakeholders based on their level of authority and their level of concern regarding project outcomes describes which classification model for stakeholder analysis?

- A. Influence/impact grid
- B. Power/influence grid
- C. Power/interest grid
- D. Salience model

**Answer:** C

**NEW QUESTION 537**

The Create WBS process is in which of the following Project Management Process Groups?

- A. Planning
- B. Monitoring and Controlling
- C. Executing
- D. Initiating

**Answer:** A

**NEW QUESTION 539**

Which is an output from Distribute Information?

- A. Earned value analysis
- B. Trend analysis
- C. Project records
- D. Performance reviews

**Answer:** C

**NEW QUESTION 541**

Which document defines how a project is executed, monitored and controlled, and closed?

- A. Strategic plan
- B. Project charter
- C. Project management plan
- D. Service level agreement

**Answer:** C

**NEW QUESTION 546**

Which Project Management Process Group includes Collect Requirements, Define Activities, Sequence Activities, Perform Qualitative Risk Analysis, and Perform Quantitative Risk Analysis?

- A. Initiating
- B. Monitoring and Controlling
- C. Planning
- D. Closing

**Answer:** C

**NEW QUESTION 547**

Which Define Activities tool or technique is used for dividing and subdividing the project scope and project deliverables into smaller, more manageable parts?

- A. Decomposition
- B. Inspection
- C. Project analysis
- D. Document analysis

**Answer:** A

**NEW QUESTION 552**

Inputs to the Plan Risk Management process include the:

- A. cost management plan.
- B. risk management plan,
- C. activity list,
- D. risk register.

**Answer:** D

**NEW QUESTION 554**

Sending letters, memos, reports, emails, and faxes to share information is an example of which type of communication?

- A. Direct
- B. Interactive
- C. Pull
- D. Push

**Answer:** D

**NEW QUESTION 557**

"Tailoring" is defined as the:

- A. effort of addressing each process to determine which are appropriate and their appropriate degree of rigor.
- B. act of creating a project team with the specialized skills required to produce a required product or service.
- C. action taken to bring a defective or nonconforming component into compliance with requirements or specifications.
- D. adjustment of the respective influences of time, cost, and quality in order to most efficiently achieve scope.

**Answer:** A

**NEW QUESTION 561**

Which is an input to the Verify Scope process?

- A. Performance report
- B. Work breakdown structure (WBS)
- C. Requested changes
- D. Project management plan

**Answer:** D

**NEW QUESTION 562**

Which type of analysis systemically gathers and analyzes qualitative and quantitative information to determine which interests should be taken into account throughout the project?

- A. Product
- B. Cost-benefit
- C. Stakeholder
- D. Research

**Answer:** C

**NEW QUESTION 563**

What component of the project scope definition defines project exclusions?

- A. Project boundaries
- B. Project constraints
- C. Project assumptions
- D. Project objectives

**Answer:** A

**Explanation:** Topic 3, Executing

**NEW QUESTION 564**

At which stage of team development do members begin to work together, adjust work habits, and trust each other?

- A. Forming
- B. Storming
- C. Norming
- D. Performing

**Answer:** C

**NEW QUESTION 566**

An output of the Manage Project Team process is:

- A. project management plan updates
- B. project staff assignments updates
- C. team performance assessments
- D. resource calendar updates

**Answer:** A

**NEW QUESTION 570**

The process of developing a detailed description of the project and product is known as:

- A. Create WBS.
- B. Verify Scope.
- C. Collect Requirements.
- D. Define Scope.

**Answer:** D

**NEW QUESTION 572**

Which of the following processes are within the Initiating Process Group?

- A. Develop Project Management Plan and Identify Stakeholders
- B. Develop Project Management Plan and Plan Communications
- C. Develop Project Charter and Identify Stakeholders
- D. Develop Project Charter and Develop Project Scope Statement

**Answer:** C

**NEW QUESTION 577**

An input to the Estimate Activity Resources process is:

- A. Activity resource requirements.
- B. Published estimating data.
- C. Resource calendars.
- D. Resource breakdown structure (RBS).

**Answer:** C

**NEW QUESTION 579**

A project has an EV of 100 workdays, an AC of 120 workdays, and a PV of 80 workdays. What should be the concern?

- A. There is a cost underrun.
- B. There is a cost overrun.
- C. The project may not meet the deadline.
- D. The project is 20 days behind schedule.

**Answer:** B

**NEW QUESTION 581**

Which of the following is an output of the Perform Integrated Change Control process?

- A. Project document updates
- B. Organizational process assets updates
- C. Change requests

D. Deliverables

**Answer:** A

**NEW QUESTION 582**

Which of the following are examples of interactive communication?

- A. Intranet sites
- B. Voice mails
- C. Video conferences
- D. Press releases

**Answer:** C

**NEW QUESTION 586**

What is one of the MAJOR outputs of activity sequencing?

- A. Responsibility assignment matrix
- B. Work breakdown structure update
- C. Project network diagram
- D. Mandatory dependencies list

**Answer:** C

**NEW QUESTION 591**

Which tool and technique identifies inefficient and ineffective policies, processes, and procedures?

- A. Scope audits
- B. Scope reviews
- C. Quality audits
- D. Control chart

**Answer:** C

**NEW QUESTION 595**

An imposed date for completion of the project by the customer is an example of a project:

- A. deliverable
- B. assumption
- C. constraint
- D. exclusion

**Answer:** C

**NEW QUESTION 599**

Quality and credibility of the qualitative risk analysis process requires that different levels of the risk's probabilities and impacts be defined is the definition of what?

- A. Risk breakdown structure (RBS)
- B. Risk probability and impact
- C. Qualitative risk analysis
- D. Risk response planning

**Answer:** B

**NEW QUESTION 603**

What scope definition technique is used to generate different approaches to execute and perform the work of the project?

- A. Build v
- B. buy
- C. Expert judgment
- D. Alternatives identification
- E. Product analysis

**Answer:** C

**NEW QUESTION 605**

Projects can intersect with an organization's operations at various points during the product life cycle such as:

- A. When there is an operations shutdown (i.
- B. a strike).
- C. When developing new products, upgrading products, or expanding outputs.
- D. When a project transitions from a temporary to a permanent status.
- E. When the project manager is promoted to operations manager.

**Answer:** B

**NEW QUESTION 606**

Which of the following methods of performance review examines project performance over time to determine if performance is improving or deteriorating?

- A. Earned value performance
- B. Trend analysis
- C. Cost-benefit analysis
- D. Variance analysis

**Answer:** B

**NEW QUESTION 609**

A tool or technique used in the Control Procurements process is:

- A. Expert judgment.
- B. Performance reporting.
- C. Bidder conferences.
- D. Reserve analysis.

**Answer:** B

**NEW QUESTION 614**

Which changes occur in risk and uncertainty as well as the cost of changes as the life cycle of a typical project progresses?

- A. Risk and uncertainty increase; the cost of changes increases.
- B. Risk and uncertainty increase; the cost of changes decreases.
- C. Risk and uncertainty decrease; the cost of changes increases.
- D. Risk and uncertainty decrease; the cost of changes decreases.

**Answer:** C

**NEW QUESTION 616**

What is a deliverable-oriented, hierarchical decomposition of the work to be executed to accomplish the project objectives and create the required deliverables?

- A. Organizational breakdown structure (OBS)
- B. Work performance information
- C. Work package
- D. Work breakdown structure (WBS)

**Answer:** D

**NEW QUESTION 619**

The process of monitoring the status of the project to update project progress and manage changes to the schedule baseline is:

- A. Control Schedule.
- B. Quality Control.
- C. Perform Integrated Change Control.
- D. Develop Schedule.

**Answer:** A

**NEW QUESTION 623**

A project manager needs to deliver the project 2 weeks before the planned date without changing the scope. Which of the following techniques may be applied to reevaluate the schedule?

- A. What-if scenario analysis
- B. Critical chain method
- C. Schedule crashing
- D. Resource leveling

**Answer:** C

**NEW QUESTION 627**

A procurement management plan is a subsidiary of which other type of plan?

- A. Resource plan
- B. Project management plan
- C. Cost control plan
- D. Expected monetary value plan

**Answer:** B

**NEW QUESTION 630**

In which process might a project manager use risk reassessment as a tool and technique?

- A. Perform Qualitative Risk Analysis
- B. Risk Control
- C. Monitor and Control Project Work
- D. Plan Risk Responses

**Answer:** B

#### NEW QUESTION 631

Who determines which dependencies are mandatory during the Sequence Activities process?

- A. Project manager
- B. External stakeholders
- C. Internal stakeholders
- D. Project team

**Answer:** D

#### NEW QUESTION 635

A process is defined as:

- A. A set of interrelated actions and activities performed to achieve a certain objective.
- B. A set of guidelines that explains how to carry out a particular task.
- C. The inputs for a task and the tools and techniques required to carry out the task.
- D. A collection of logically related project activities, usually culminating in the completion of a major deliverable.

**Answer:** A

#### NEW QUESTION 639

Which Define Activities output extends the description of the activity by identifying the multiple components associated with each activity?

- A. Project document updates
- B. Activity list
- C. Activity attributes
- D. Project calendars

**Answer:** C

#### NEW QUESTION 644

Which tool or technique of the Define Activities process allows for work to exist at various levels of detail depending on where it is in the project life cycle?

- A. Historical relationships
- B. Dependency determination
- C. Bottom-up estimating
- D. Rolling wave planning

**Answer:** D

#### NEW QUESTION 645

Which type of analysis would be used for the Plan Quality process?

- A. Schedule
- B. Checklist
- C. Assumption
- D. Cost-Benefit

**Answer:** D

#### NEW QUESTION 649

What is a tool and technique used in the Develop Project Management Plan process?

- A. Project management information system (PMIS)
- B. Project charter
- C. Quality assurance
- D. Expert judgment

**Answer:** D

#### NEW QUESTION 653

Impacts to other organizational areas, levels of service, and acceptance criteria are typical components of which document?

- A. Business case
- B. Work breakdown structure
- C. Requirements documentation
- D. Risk register

**Answer:** C

**NEW QUESTION 655**

What are the formal and informal policies, procedures, and guidelines that could impact how the project's scope is managed?

- A. Organizational process assets
- B. Enterprise environmental factors
- C. Project management processes
- D. Project scope management plan

**Answer:** A

**NEW QUESTION 659**

Which illustrates the connection between work that needs to be done and its project team members?

- A. Work breakdown structure
- B. Network diagrams
- C. Staffing management plan
- D. Responsibility matrix

**Answer:** D

**NEW QUESTION 660**

An input to the Perform Integrated Change Control process is:

- A. expert judgment
- B. seller proposals
- C. the project charter
- D. the project management plan

**Answer:** D

**NEW QUESTION 664**

The number of potential communication channels for a project with 5 stakeholders is:

- A. 10.
- B. 12.
- C. 20.
- D. 24.

**Answer:** A

**NEW QUESTION 668**

How is scheduled variance calculated using the earned value technique?

- A. EV less AC
- B. AC less PV
- C. EV less PV
- D. AC less EV

**Answer:** C

**NEW QUESTION 673**

Which technique is used in Perform Quantitative Risk Analysis?

- A. Sensitivity analysis
- B. Probability and impact matrix
- C. Risk data quality assessment
- D. Risk categorization

**Answer:** A

**NEW QUESTION 674**

Who is responsible for developing the project management plan and all related component plans?

- A. Project team
- B. Portfolio manager
- C. Project manager
- D. Project management office

**Answer:** C

**NEW QUESTION 676**

To which process is work performance information an input?



- A. Administer Procurements
- B. Direct and Manage Project Execution
- C. Create WBS
- D. Perform Qualitative Risk Analysis

**Answer:** C

#### NEW QUESTION 681

One of the tools and techniques of the Manage Project Team process is:

- A. organization charts.
- B. ground rules.
- C. organizational theory,
- D. conflict management.

**Answer:** D

#### NEW QUESTION 684

A change log for communications can be used to communicate to the appropriate stakeholders that there are changes:

- A. To the project management plan.
- B. To the risk register.
- C. In the scope verification processes.
- D. And their impact to the project in terms of time, cost, and risk.

**Answer:** D

#### NEW QUESTION 689

Which Process Group typically consumes the bulk of a project's budget?

- A. Monitoring and Controlling
- B. Executing
- C. Planning
- D. Initiating

**Answer:** B

#### NEW QUESTION 694

Which of the following are documented directions to perform an activity that can reduce the probability of negative consequences associated with project risks?

- A. Recommended corrective actions
- B. Recommended preventive actions
- C. Risk audits
- D. Risk reassessments

**Answer:** B

#### NEW QUESTION 696

When would resource leveling be applied to a schedule model?

- A. Before constraints have been identified
- B. Before it has been analyzed by the critical path method
- C. After it has been analyzed by the critical path method
- D. After critical activities have been removed from the critical path

**Answer:** C

#### NEW QUESTION 700

A car company authorized a project to build more fuel-efficient cars in response to gasoline shortages. With which of the following strategic considerations was this project mainly concerned?

- A. Market demand
- B. Legal requirements
- C. Strategic Opportunity
- D. Technological advance

**Answer:** A

#### NEW QUESTION 703

Which type of estimating is used to improve the accuracy of an activity's duration?

- A. Analogous
- B. Parametric
- C. Three-point
- D. What-if scenario analysis

**Answer:** C

**NEW QUESTION 707**

A project charter is an output of which Process Group?

- A. Executing
- B. Planning
- C. Initiating
- D. Closing

**Answer:** C

**NEW QUESTION 709**

A project management office manages a number of aspects including the:

- A. Project scope, schedule, cost, and quality of the products of the work packages.
- B. Central coordination of communication management across projects.
- C. Assignment of project resources to best meet project objectives.
- D. Overall risk, overall opportunity, and interdependencies among projects at the enterprise level.

**Answer:** D

**NEW QUESTION 712**

The Project Management Process Group in which performance is observed and measured regularly from project initiation through completion is:

- A. Executing.
- B. Initiating,
- C. Monitoring and Controlling.
- D. Planning.

**Answer:** C

**NEW QUESTION 715**

Which process should be conducted from the project inception through completion?

- A. Monitor and Control Project Work
- B. Perform Quality Control
- C. Perform Integrated Change Control
- D. Monitor and Control Risks

**Answer:** C

**NEW QUESTION 718**

Based on the following metrics: EV=\$20,000, AC=\$22,000, and PV=\$28,000, what is the project CV?

- A. -8000
- B. -2000
- C. 2000
- D. 8000

**Answer:** B

**NEW QUESTION 721**

Activities on the critical path have which type of float?

- A. Zero free float
- B. Zero or negative float
- C. Negative and positive float
- D. Zero or positive float

**Answer:** B

**NEW QUESTION 724**

Who is responsible for reviewing change requests and approving or rejecting the change requests?

- A. Change control board
- B. Project manager
- C. Project management office
- D. Project sponsor

**Answer:** B

**NEW QUESTION 728**

How many Project Management Process Groups are there?

- A. 3
- B. 4
- C. 5
- D. 6

**Answer:** C

**NEW QUESTION 731**

Which characteristic is unique to project work and does not apply to operational work?

- A. Performed by individuals
- B. Limited by constraints
- C. Temporary
- D. Performed to achieve organizational objectives

**Answer:** C

**NEW QUESTION 732**

Which of the following is an input of the Define Activities process?

- A. Scope baseline
- B. Milestone list
- C. Resource calendars
- D. Activity list

**Answer:** A

**NEW QUESTION 736**

What provides information regarding the ways people, teams, and organizational units behave?

- A. Organizational chart
- B. Organizational theory
- C. Organizational structure
- D. Organizational behavior

**Answer:** B

**NEW QUESTION 740**

Which tool or technique is used in Close Procurements?

- A. Contract plan
- B. Procurement plan
- C. Closure process
- D. Procurement audits

**Answer:** D

**NEW QUESTION 741**

What is the lowest level in the Work Breakdown Structure called?

- A. Work Packages
- B. Activities
- C. Schedules
- D. Tasks

**Answer:** A

**NEW QUESTION 746**

Organizational planning impacts projects by means of project prioritization based on risk, funding, and an organizations:

- A. Budget plan
- B. Resource plan
- C. Scope plan
- D. Strategic plan

**Answer:** D

**NEW QUESTION 747**

Managing ongoing production of goods and services to ensure business continues efficiently describes which type of management?

- A. Portfolio
- B. Project
- C. Program
- D. Operations

**Answer:** D

**NEW QUESTION 750**

Decomposition, rolling wave planning, and templates are all tools and techniques for which of the following?

- A. Define Activities
- B. Estimate Activity Durations
- C. Develop Schedule
- D. Sequence Activities

**Answer:** A

**NEW QUESTION 752**

Which characteristic do projects and operational work share in common?

- A. Performed by systems
- B. Constrained by limited resources
- C. Repetitiveness
- D. Uniqueness

**Answer:** B

**NEW QUESTION 753**

In which of the following types of organizations is resource availability moderate to high?

- A. Weak matrix
- B. Balanced matrix
- C. Strong matrix
- D. Projectized

**Answer:** C

**NEW QUESTION 755**

Which of the following is an input into the Develop Project Team process?

- A. Enterprise environmental factors
- B. Organizational process assets
- C. Project staff assignments
- D. Performance reports

**Answer:** C

**NEW QUESTION 759**

A project manager managing a cross-cultural virtual project team across several time zones should be concerned about the impacts of which communication technology factor?

- A. Urgent information need
- B. Sensitivity of information
- C. Project environment
- D. Ease of use

**Answer:** C

**NEW QUESTION 764**

Processes in the Planning Process Group are typically carried out during which part of the project life cycle?

- A. Only once, at the beginning
- B. At the beginning and the end
- C. Once during each phase
- D. Repeatedly

**Answer:** D

**NEW QUESTION 766**

A Pareto chart is a specific type of:

- A. control chart
- B. histogram
- C. cause-and-effect diagram
- D. scatter diagram

**Answer:** B

**NEW QUESTION 771**

What is the name of a graphic display of project team members and their reporting relationships?

- A. Role dependencies chart
- B. Reporting flow diagram
- C. Project organization chart
- D. Project team structure diagram

**Answer:** C

#### NEW QUESTION 775

Which of the following are inputs into the Administer Procurements process?

- A. Payment systems, organizational process assets update, and claims administration
- B. Inspections and audits, contract change control system, and project management plan updates
- C. Procurement documents, performance reports, and approved change requests
- D. Project documents, seller proposals, and payment systems

**Answer:** C

#### NEW QUESTION 777

Which of the following involves making information available to project stakeholders in a timely manner?

- A. Plan Communications
- B. Performance reporting
- C. Project status reports
- D. Distribute Information

**Answer:** D

#### NEW QUESTION 781

Which tool or technique is effective in a project in which the deliverable is not a service or result?

- A. Inspection
- B. Variance analysis
- C. Decomposition
- D. Product analysis

**Answer:** D

#### NEW QUESTION 785

Which defines the portion of work included in a contract for items being purchased or acquired?

- A. Procurement management plan
- B. Evaluation criteria
- C. Work breakdown structure
- D. Procurement statement of work

**Answer:** D

#### NEW QUESTION 787

Project management processes are:

- A. Static; they must not change across different projects.
- B. Applied globally and across all industry groups.
- C. Discrete elements with well-defined interfaces.
- D. Project phases, applied as required in different projects.

**Answer:** B

#### NEW QUESTION 791

Which tool or technique measures performance of the project as it moves from project initiation through project closure?

- A. Resource leveling
- B. Parametric measuring
- C. Pareto chart
- D. Earned value

**Answer:** D

#### NEW QUESTION 793

Overlooking negative stakeholders can result in a/an:

- A. decreased likelihood of conflicting interests between stakeholders.
- B. decreased likelihood of the projects progress being impeded.
- C. increased likelihood of project failure.

D. increased likelihood of project success.

**Answer:** C

**NEW QUESTION 794**

Which of the following is an input to the Plan Risk Responses process?

- A. Risk urgency assessment
- B. Organizational process assets
- C. Risk register
- D. Schedule management plan

**Answer:** C

**NEW QUESTION 796**

A weighting system is a tool for which area of procurement?

- A. Plan contracting
- B. Request seller responses
- C. Select sellers
- D. Plan purchase and acquisition

**Answer:** C

**NEW QUESTION 800**

The Process Group in which the internal and external stakeholders interact and influence the overall outcome of the project is the:

- A. Monitoring and Controlling Process Group.
- B. Initiating Process Group.
- C. Planning Process Group.
- D. Executing Process Group.

**Answer:** B

**NEW QUESTION 805**

Which of the following is an output of the Conduct Procurements process?

- A. Project statement of work
- B. Selected sellers
- C. Risk register updates
- D. Teaming agreements

**Answer:** B

**NEW QUESTION 809**

Which schedule development tool and technique produces a theoretical early start date and late start date?

- A. Critical path method
- B. Variance analysis
- C. Schedule compression
- D. Schedule comparison bar charts

**Answer:** A

**NEW QUESTION 812**

Which of the following procurement processes results in the awarding of a procurement contract?

- A. Administer Procurements
- B. Close Procurements
- C. Conduct Procurements
- D. Plan Procurements

**Answer:** C

**NEW QUESTION 816**

Which risk response strategy is common for both positive and negative risks?

- A. Share
- B. Accept
- C. Mitigate
- D. Transfer

**Answer:** B

#### NEW QUESTION 817

An input to the Manage Project Team process is:

- A. Work performance reports.
- B. Change requests.
- C. Activity resource requirements.
- D. Enterprise environmental factors.

**Answer:** A

#### NEW QUESTION 821

Information distribution involves making needed information available to project stakeholders in a timely manner. What is an output from information distribution?

- A. Earned value analysis
- B. Trend analysis
- C. Project records
- D. Performance reviews

**Answer:** C

#### NEW QUESTION 823

Which of the following are inputs to the Plan Procurements process?

- A. Risk register, scope baseline, enterprise environmental factors, organizational process assets, project schedule
- B. Risk register, scope baseline, make-or-buy decisions, organizational process assets, project schedule
- C. Project management plan, qualified seller list, contract, enterprise environmental factors, teaming agreements
- D. Project management plan, qualified seller list, contract, make-or-buy decisions, teaming agreements

**Answer:** A

#### NEW QUESTION 827

Which schedule method allows the project team to place buffers on the project schedule path to account for limited resources and project uncertainties?

- A. Critical path method
- B. Critical chain method
- C. Resource leveling
- D. Schedule network analysis

**Answer:** B

#### NEW QUESTION 832

In which process might you use risk reassessment as a tool and technique?

- A. Qualitative risk analysis
- B. Risk monitoring and control
- C. Monitor and control project work
- D. Risk response planning

**Answer:** B

#### NEW QUESTION 835

The three types of estimates that PERT uses to define an approximate range for an activity's cost are:

- A. Parametric, most likely, and analogous.
- B. Least likely, analogous, and realistic.
- C. Parametric, optimistic, and pessimistic.
- D. Most likely, optimistic, and pessimistic.

**Answer:** D

#### NEW QUESTION 837

Which type of manager is assigned by the performing organization to lead the team that is responsible for achieving the project objectives?

- A. Program
- B. Functional
- C. Project
- D. Portfolio

**Answer:** C

#### NEW QUESTION 839

The run chart created during the Perform Quality Control process on a project is used to show the:

- A. relationship between two variables
- B. data points plotted in the order in which they occur



- C. most common cause of problems in a process
- D. frequency of occurrence

**Answer:** B

#### NEW QUESTION 844

Which type of team can be defined as a group of people with a shared goal who fulfill their roles although spending little or no time meeting face to face?

- A. Co-location team
- B. Virtual team
- C. Departmental team
- D. Consultant team

**Answer:** B

#### NEW QUESTION 847

The traditional organization chart structure that can be used to show positions and relationships in a graphic top-down format is called a:

- A. Responsible, accountable, consult, and inform (RACI) chart.
- B. Matrix-based chart.
- C. Human resource chart.
- D. Hierarchical-type chart.

**Answer:** D

#### NEW QUESTION 848

A project manager has created an issue log to document issues communicated by project team members during weekly team meetings. This is an input of:

- A. Manage Stakeholder Expectations.
- B. Monitor and Control Risks.
- C. Plan Risk Management.
- D. Report Performance.

**Answer:** A

#### NEW QUESTION 849

Issue change requests and adapt approved changes into the project's scope, plans, and environment is an activity included in which of the following project management processes?

- A. Direct and Manage Project Execution
- B. Monitor and Control Project Work
- C. Perform Integrated Change Control
- D. Monitor and Control Risks

**Answer:** A

#### NEW QUESTION 854

Resource calendars are included in the:

- A. staffing management plan.
- B. work breakdown structure (WBS).
- C. project communications plan.
- D. project charter.

**Answer:** A

#### NEW QUESTION 856

Which of the following strategic considerations often results in project authorization?

- A. Customer requests and/or issue resolution
- B. Stakeholder expectations and/or strategic opportunity (business need)
- C. Technological advancement and/or senior executive request
- D. Market demand and/or legal requirements

**Answer:** D

#### NEW QUESTION 859

Which cost estimate technique includes contingencies to account for cost uncertainty?

- A. Vendor bid analysis
- B. Three-point estimates
- C. Parametric estimating
- D. Reserve analysis

**Answer:** D

**NEW QUESTION 860**

Status of deliverables, implementation status for change requests, and forecasted estimates to complete are examples of:

- A. Earned value management.
- B. Enterprise environmental factors.
- C. Organizational process assets.
- D. Work performance information.

**Answer:** D

**NEW QUESTION 862**

Based on the following metrics: EV= \$20,000, AC= \$22,000, and PV= \$28,000, what is the project CV?

- A. -8000
- B. -2000
- C. 2000
- D. 8000

**Answer:** B

**NEW QUESTION 863**

Job satisfaction, challenging work, and sufficient financial compensation are values related to which interpersonal skill?

- A. Influencing
- B. Motivation
- C. Negotiation
- D. Trust building

**Answer:** B

**NEW QUESTION 864**

Which grid shows which resources are tied to work packages?

- A. Work breakdown structure (WBS)
- B. Responsibility assignment matrix (RAM)
- C. Project assignment chart
- D. Personnel assignment matrix

**Answer:** B

**NEW QUESTION 869**

Which of the following correctly describes when organizations and stakeholders are willing to accept varying degrees of risk?

- A. Risk analysis
- B. Risk tolerance
- C. Risk management
- D. Risk attitude

**Answer:** B

**NEW QUESTION 871**

Expected monetary value (EMV) is computed by which equation?

- A. Value of each possible outcome multiplied by probability of occurrence
- B. Value of each possible outcome multiplied by probability of non-occurrence
- C. Multiplying the value of each possible outcome by the probability of occurrence and adding the products together
- D. Multiplying the value of each possible outcome by the probability of non-occurrence and adding the products together

**Answer:** C

**NEW QUESTION 876**

Which of the following is an output of Direct and Manage Project Execution?

- A. Project management plan
- B. Change request status updates
- C. Organizational process assets updates
- D. Work performance information

**Answer:** D

**NEW QUESTION 881**

Which stakeholder communicates with higher levels of management to gather organizational support and promote project benefits?

- A. Portfolio manager

- B. Project sponsor
- C. Project manager
- D. Project management office

**Answer:** B

**NEW QUESTION 884**

Which tool and technique is used in Conduct Procurements?

- A. Teaming agreements
- B. Expert judgment
- C. Bidder conferences
- D. Contract types

**Answer:** C

**NEW QUESTION 885**

Within project integration management, the statement of work (SOW) references which aspects of the project?

- A. Strategic plan, business need, and product scope description
- B. Contract, enterprise environmental factors, and organizational process assets
- C. Business plan, project management plan, and project schedule
- D. Product lifecycle, business objective, and management strategy

**Answer:** A

**NEW QUESTION 887**

Analytical techniques are a tool and technique of which process in Project Procurement Management?

- A. Plan Procurement Management
- B. Control Procurements
- C. Conduct Procurements
- D. Close Procurements

**Answer:** C

**NEW QUESTION 890**

Correlated and contextualized information on how closely the scope is being maintained relative to the scope baseline is contained within:

- A. project documents updates.
- B. project management plan updates.
- C. change requests.
- D. work performance information.

**Answer:** D

**NEW QUESTION 892**

Which tool within the Perform Quality Control process identifies whether or not a process has a predictable performance?

- A. Cause and effect diagram
- B. Control charts
- C. Pareto chart
- D. Histogram

**Answer:** B

**NEW QUESTION 894**

To which process is work performance information an input?

- A. Contract administration
- B. Direction and management of project execution
- C. Create WBS
- D. Qualitative risk analysis

**Answer:** A

**NEW QUESTION 896**

Which process group contains the processes performed to finalize all activities?

- A. Planning Process Group
- B. Executing Process Group
- C. Monitoring and Controlling Process Group
- D. Closing Process Group

**Answer:** D

**NEW QUESTION 901**

Change request status updates are an output of which process?

- A. Perform Integrated Change Control
- B. Direct and Manage Project Execution
- C. Close Project or Phase
- D. Monitor and Control Project Work

**Answer:** A

**NEW QUESTION 905**

Which of the following is an input to the Direct and Manage Project Execution process?

- A. Approved change requests
- B. Approved contract documentation
- C. Work performance information
- D. Rejected change requests

**Answer:** A

**NEW QUESTION 909**

The integrative nature of project management requires which Process Group to interact with the other Process Groups?

- A. Planning
- B. Executing
- C. Monitoring and Controlling
- D. Project Management

**Answer:** C

**NEW QUESTION 913**

The Plan Procurements process includes documenting project purchasing decisions and what other steps?

- A. Specifying the approach and identifying potential sellers
- B. Specifying the approach and selecting a seller
- C. Identifying potential sellers and obtaining seller responses
- D. Specifying the approach and managing procurement relationships

**Answer:** A

**NEW QUESTION 914**

Which of the Perform Quality Assurance tools and techniques may enhance the creation of the work breakdown structure (WBS) to give structure to the decomposition of the scope?

- A. Activity network diagrams
- B. Affinity diagrams
- C. Matrix diagrams
- D. Interrelationship digraphs

**Answer:** B

**NEW QUESTION 917**

Which quality tool incorporates the upper and lower specification limits allowed within an agreement?

- A. Control chart
- B. Flowchart
- C. Checksheet
- D. Pareto diagram

**Answer:** A

**NEW QUESTION 920**

For a stakeholder with low interest and high power, the project manager should:

- A. Monitor the stakeholder.
- B. Manage the stakeholder closely.
- C. Keep the stakeholder satisfied.
- D. Keep the stakeholder informed.

**Answer:** C

**NEW QUESTION 922**

Managing procurement relationships and monitoring contract performance are part of which process?

- A. Conduct Procurements
- B. Plan Procurements
- C. Administer Procurements
- D. Close Procurements

**Answer:** C

**NEW QUESTION 925**

The project manager at an organization has just realized that some of the engineering staff has been allocated to project Y and will not be available to finish task X. The project manager has also discovered that at the current pace, it will not be possible to complete the project on time. Due to cost constraints, hiring more work force is not a viable option. Which tools are at the manager's disposal?

- A. Resource leveling and fast tracking
- B. Fast tracking and crashing
- C. Crashing and applying leads and lags
- D. Scheduling tools and applying leads and lags

**Answer:** A

**NEW QUESTION 926**

Which of the following is developed from the project scope baseline and defines only that portion of the project scope that is to be included within a related contract?

- A. Product scope description
- B. Procurement statement of work
- C. Project schedule
- D. Work breakdown structure (WBS)

**Answer:** B

**NEW QUESTION 931**

Which of the following can be used as an input for Define Scope?

- A. Product analysis
- B. Project charter
- C. Scope baseline
- D. Project scope statement

**Answer:** B

**NEW QUESTION 933**

The project manager has requested all expert team members to complete an anonymous questionnaire to identify possible risks. This is an example of a technique known as the:

- A. interview technique
- B. information gathering technique
- C. Delphi technique
- D. feedback technique

**Answer:** C

**NEW QUESTION 937**

Which tool and technique is used in Conduct Procurements?

- A. Teaming agreements
- B. Expert judgment
- C. Bidder conferences
- D. Contract types

**Answer:** C

**NEW QUESTION 939**

The iterative process of increasing the level of detail in a project management plan as greater amounts of information become available is known as:

- A. Continuous improvement.
- B. Predictive planning.
- C. Progressive elaboration.
- D. Quality assurance.

**Answer:** C

**NEW QUESTION 940**

The correct equation for schedule variance (SV) is earned value:

- A. minus planned value [EV - PV].

- B. minus actual cost [EV - AC].
- C. divided by planned value [EV/PV],
- D. divided by actual cost [EV/AC].

**Answer:** A

#### NEW QUESTION 942

Which tool or technique is used to develop the human resource management plan?

- A. Ground rules
- B. Expert judgment
- C. Team-building activities
- D. Interpersonal skills

**Answer:** B

#### NEW QUESTION 943

The definition of operations is a/an:

- A. organizational function performing the temporary execution of activities that produce the same product or provide repetitive service.
- B. temporary endeavor undertaken to create a unique product, service, or result.
- C. organization that provides oversight for an administrative area.
- D. organizational function performing the ongoing execution of activities that produce the same product or provide repetitive service.

**Answer:** D

#### NEW QUESTION 946

Approved change requests, approved corrective actions, and updates to organizational process assets are all outputs of which project management process?

- A. Risk response planning
- B. Manage stakeholders
- C. Scope definition
- D. Performance reporting

**Answer:** B

#### NEW QUESTION 949

Ensuring that both parties meet contractual obligations and that their own legal rights are protected is a function of:

- A. Conduct Procurements.
- B. Close Procurements.
- C. Administer Procurements,
- D. Plan Procurements.

**Answer:** C

#### NEW QUESTION 952

The cost of nonconformance in a project includes:

- A. testing
- B. rework
- C. inspections
- D. training

**Answer:** B

#### NEW QUESTION 953

In complex projects/ initiating processes should be completed:

- A. Within a work package.
- B. In each phase of the project.
- C. To estimate schedule constraints.
- D. To estimate resource allocations.

**Answer:** B

#### NEW QUESTION 955

Which of the following change requests can bring expected future performance of the project work in line with the project management plan?

- A. Corrective action
- B. Defect repair
- C. Preventative action
- D. Probable action

**Answer:** A

**NEW QUESTION 959**

Change requests, project management plan updates, project document updates, and organizational process assets updates are all outputs of which project management process?

- A. Plan Risk Responses
- B. Manage Stakeholder Expectations
- C. Define Scope
- D. Report Performance

**Answer:** B

**NEW QUESTION 963**

Which process involves aggregating the estimated costs of the individual schedule activities or work packages?

- A. Estimate Costs
- B. Estimate Activity Resources
- C. Control Costs
- D. Determine Budget

**Answer:** B

**NEW QUESTION 964**

Which technique is commonly used for the Quantitative Risk Analysis activity?

- A. Brainstorming
- B. Strategies for Opportunities
- C. Decision Tree Analysis
- D. Risk Data Quality Assessment

**Answer:** C

**NEW QUESTION 965**

Projects are authorized by which of the following individuals?

- A. Project managers
- B. Stakeholders
- C. Functional managers
- D. Sponsors

**Answer:** D

**NEW QUESTION 967**

Which tool or technique is used in the Estimate Costs process?

- A. Acquisition
- B. Earned value management
- C. Vendor bid analysis
- D. Forecasting

**Answer:** C

**NEW QUESTION 970**

When cost variance is negative and schedule variance is positive, the project is:

- A. under budget and behind schedule.
- B. over budget and ahead of schedule.
- C. on schedule.
- D. complete; all planned values have been earned.

**Answer:** B

**NEW QUESTION 973**

The following chart contains information about the tasks in a project.



| Task | PV     | AC     | EV     |
|------|--------|--------|--------|
| 1    | 10,000 | 10,000 | 10,000 |
| 2    | 10,000 | 8,000  | 10,000 |
| 3    | 10,000 | 8,000  | 8,000  |
| 4    | 9,000  | 12,000 | 10,000 |
| 5    | 10,000 | 12,000 | 12,000 |
| 6    | 10,000 | 10,000 | 12,000 |
| 7    | 12,000 | 12,000 | 10,000 |
| 8    | 10,000 | 8,000  | 9,000  |
| 9    | 12,000 | 10,000 | 11,000 |

Based on the chart, what is the schedule variance (SV) for Task 8?

- A. -2,000
- B. -1,000
- C. 1,000
- D. 2,000

**Answer:** B

#### NEW QUESTION 974

Cost baseline is an output of which of the following processes?

- A. Control Costs
- B. Determine Budget
- C. Estimate Costs
- D. Estimate Activity Resources

**Answer:** B

#### NEW QUESTION 975

Which change request is an intentional activity that realigns the performance of the project work with the project management plan?

- A. Update
- B. Preventive action
- C. Defect repair
- D. Corrective action

**Answer:** D

#### NEW QUESTION 978

Which technique is utilized in the Control Schedule process?

- A. Performance measure
- B. Baseline schedule
- C. Schedule network analysis
- D. Variance analysis

**Answer:** D

**NEW QUESTION 981**

The review of a sellers progress toward achieving the goals of scope and quality within cost and schedule compared to the contract is known as:

- A. Work performance information.
- B. Inspections and audits.
- C. Payment systems.
- D. Procurement performance reviews.

**Answer:** D

**NEW QUESTION 986**

Which of the following outputs from the Schedule Control process aids in the communication of SV, SPI or any performance status to stakeholders?

- A. Performance organizations
- B. Schedule baselines
- C. Performance measurements
- D. Change requests

**Answer:** C

**NEW QUESTION 991**

What are the key components of the communication model?

- A. Encode, message and feedback-message, medium, noise, and decode
- B. Encode, messaging technology, medium, noise, and decode
- C. Sender, message and feedback-message, medium, noise, and translate
- D. Receiver, message and feedback-message, medium, noise, and decode

**Answer:** A

**NEW QUESTION 994**

One of the fundamental tenets of modern quality management states that quality is:

- A. planned, designed, and built in.
- B. planned, designed, and inspected in.
- C. built in, created, and reviewed.
- D. built in, created, and standardized.

**Answer:** A

**NEW QUESTION 996**

Which tool or technique is used in the Perform Integrated Change Control process?

- A. Decomposition
- B. Modeling techniques
- C. Resource optimization
- D. Meetings

**Answer:** D

**NEW QUESTION 998**

Analyzing the strengths, weaknesses, opportunities, and threats (SWOT) of a project is known as:

- A. calculating cost of quality
- B. comparing project benefits
- C. performing measurements analysis
- D. identifying risks

**Answer:** D

**NEW QUESTION 1002**

Market conditions and published commercial information are examples of which input to the Estimate Costs process?

- A. Scope baseline
- B. Organizational process assets
- C. Enterprise environmental factors
- D. Risk register

**Answer:** C

**NEW QUESTION 1004**

.....

## THANKS FOR TRYING THE DEMO OF OUR PRODUCT

Visit Our Site to Purchase the Full Set of Actual PMP Exam Questions With Answers.

We Also Provide Practice Exam Software That Simulates Real Exam Environment And Has Many Self-Assessment Features. Order the PMP Product From:

<https://www.2passeasy.com/dumps/PMP/>

## Money Back Guarantee

### **PMP Practice Exam Features:**

- \* PMP Questions and Answers Updated Frequently
- \* PMP Practice Questions Verified by Expert Senior Certified Staff
- \* PMP Most Realistic Questions that Guarantee you a Pass on Your FirstTry
- \* PMP Practice Test Questions in Multiple Choice Formats and Updatesfor 1 Year