

Exam Questions SnowPro-Core

SnowPro Core Certification Exam

<https://www.2passeasy.com/dumps/SnowPro-Core/>



NEW QUESTION 1

- (Exam Topic 1)

Which of the following statements would be used to export/unload data from Snowflake?

- A. COPY INTO @stage
- B. EXPORT TO @stage
- C. INSERT INTO @stage
- D. EXPORT_TO_STAGE(stage => @Wage, select => 'select * from t1');

Answer: A

Explanation:

Reference: <https://docs.snowflake.com/en/user-guide/data-unload-considerations.html>

NEW QUESTION 2

- (Exam Topic 1)

True or False: Snowflake bills for a minimum of five minutes each time a Virtual Warehouse is started.

- A. True
- B. False

Answer: B

Explanation:

Reference: <https://docs.snowflake.com/en/user-guide/credits.html>

NEW QUESTION 3

- (Exam Topic 1)

The FLATEEN function is used to query which type of data in Snowflake?

- A. Structured data
- B. Semi-structured data
- C. Both of the above
- D. None of the above

Answer: B

Explanation:

Reference: <https://docs.snowflake.com/en/user-guide/querying-semistructured.html>

FLATTEN is used to unnest semi-structured data. Don't see an application for structured data as by definition it shouldn't be nested.

NEW QUESTION 4

- (Exam Topic 1)

True or False: Micro-partition metadata enables some operations to be completed without requiring Compute.

- A. True
- B. False

Answer: A

Explanation:

Reference: <https://blog.ippon.tech/innovative-snowflake-features-caching/>

NEW QUESTION 5

- (Exam Topic 1)

Which type of table corresponds to a single Snowflake session?

- A. Temporary
- B. Transient
- C. Provisional
- D. Permanent

Answer: A

Explanation:

Snowflake supports creating temporary tables for storing non-permanent, transitory data (e.g. ETL data, session-specific data). Temporary tables only exist within the session in which they were created and persist only for the remainder of the session.
<https://docs.snowflake.com/en/user-guide/tables-temp-transient.html#:~:text=Snowflake%20supports%20creatin>

NEW QUESTION 6

- (Exam Topic 1)

True or False: All Snowflake table types include fail-safe storage.

- A. True

B. False

Answer: B

NEW QUESTION 7

- (Exam Topic 1)

True or False: A single database can exist in more than one Snowflake account.

A. True

B. False

Answer: B

Explanation:

Reference: <https://docs.snowflake.com/en/sql-reference/ddl-database.html>

NEW QUESTION 8

- (Exam Topic 1)

When loading data into Snowflake, the COPY command supports: Choose 2 answers

A. Joins

B. Fitters

C. Data type conversions

D. Column reordering

E. Aggregates

Answer: CD

NEW QUESTION 9

- (Exam Topic 1)

Which of the following statements are true of VALIDATION_MODE in Snowflake? (Choose two.)

A. The validation_mode option is used when creating an Internal Stage

B. validation_mode=return_all_errors is a parameter of the copy command

C. The validation_mode option will validate data to be loaded by the copy statement while completing the load and will return the rows that could not be loaded without error

D. The validation_mode option will validate data to be loaded by the copy statement without completing the load and will return possible errors

Answer: BD

Explanation:

Reference: <https://docs.snowflake.com/en/user-guide/data-load-bulk-ts.html>

NEW QUESTION 10

- (Exam Topic 1)

Which of the following DML commands isn't supported by Snowflake?

A. UPSERT

B. MERGE

C. UPDATE

D. TRUNCATE TABLE

Answer: A

Explanation:

Reference: <https://docs.snowflake.com/en/sql-reference/sql-dml.html>

NEW QUESTION 10

- (Exam Topic 1)

True or False: AWS Private Link provides a secure connection from the Customer's on-premise data center to the Snowflake.

A. True

B. False

Answer: B

Explanation:

Reference: <https://docs.snowflake.com/en/user-guide/admin-security-privatelink.html>

NEW QUESTION 14

- (Exam Topic 1)

True or False: Some queries can be answered through the metadata cache and do not require an active Virtual Warehouse.

A. True

B. False

Answer: A

Explanation:

Some aggregate queries are answered thru micro partitions metadata only not requiring any VW spin ups.

NEW QUESTION 19

- (Exam Topic 1)

Which statement best describes " clustering"?

- A. Clustering represents the way data is grouped together and stored within snowflake's micro-partitions
- B. The database administrator must define the clustering methodology for each Snowflake table.
- C. The clustering key must be included on the COPV command when loading data into Snowflake.
- D. Clustering can be disabled within a Snowflake account.

Answer: A

Explanation:

Reference: <https://docs.snowflake.com/en/user-guide/tables-clustering-micropartitions.html>

NEW QUESTION 22

- (Exam Topic 1)

Which of the following objects is not covered by Time Travel?

- A. Tables
- B. Schemas
- C. Databases
- D. Stages

Answer: D

Explanation:

Reference: <https://docs.snowflake.com/en/user-guide/data-time-travel.html>

NEW QUESTION 23

- (Exam Topic 1)

True or False: During data unloading, only JSON and CSV files can be compressed.

- A. True
- B. False

Answer: B

Explanation:

Reference: <https://docs.snowflake.com/en/sql-reference/sql/create-file-format.html>

NEW QUESTION 28

- (Exam Topic 1)

Which of the following statements is true of zero-copy cloning?

- A. Zero-copy clones objects inherit
- B. All zero-copy clone objects inherit the privileges of their original objects
- C. Zero-copy coning is licensed as an additional Snowflake feature
- D. At the instance/instance a clone is created, all micro-partitions in the original table and the clone are fully shared.

Answer: D

Explanation:

Reference: <https://community.snowflake.com/s/question/0D50Z00009D8VOd/zero-copy-cloning-base-data>

NEW QUESTION 29

- (Exam Topic 1)

What privileges are required to create a task?

- A. The global privilege create task is required to create a new task.
- B. Tasks are created at the Application level and can only be created by the Account Admin role.
- C. Many Snowflake DDLs are metadata operations only, and create task DDL can be executed without virtual warehouse requirement or task specific grants.
- D. The role must have access to the target schema and the create task privilege on the schema itself.

Answer: D

Explanation:

All tasks in a simple tree must have the same task owner (i.e. a single role must have the OWNERSHIP privilege on all of the tasks in the tree). All tasks in a simple tree must exist in the same schema.

<https://docs.snowflake.com/en/user-guide/tasks-intro.html#creating-tasks>

NEW QUESTION 32

- (Exam Topic 1)

Which of the following are best practices for users with the SYSADMIN/ACCOUNTADMIN roles? Choose 3 answers

- A. Their default role should be set to SYSTEMADMIN (the lower of the two)
- B. They should not set up multi_Factor Authentication (MFA)—as administrator they may need to change the MFA settings and those enrolled in MFA are unable to do so
- C. They should only access and 'step into' the ACCOUNTADMIN role temporarily, as needed to complete a specific operation
- D. They should ensure all database objects in the account are owned by the ACCOUNTADMIN role
- E. They should use the SYSADMIN role to perform administrative work on database objects

Answer: ACE

NEW QUESTION 35

- (Exam Topic 1)

How many shares can be consumed by single Data Consumer?

- A. 1
- B. 10
- C. 100, but can be increased by contacting support
- D. Unlimited

Answer: D

Explanation:

Reference: <https://docs.snowflake.com/en/user-guide/data-sharing-intro.html>

NEW QUESTION 37

- (Exam Topic 1)

Which of the following are common use cases for zero-copy cloning? Choose 3 answers

- A. Quick provisioning of Dev and Test/QA environments
- B. Data backups
- C. Point in time snapshots
- D. Performance optimization

Answer: ABC

Explanation:

Reference: <https://community.snowflake.com/s/question/0D50Z00009C3VIMSAV/zero-copy-cloning>

NEW QUESTION 39

- (Exam Topic 1)

True or False: Snowflake's Global Services Layer gathers and maintains statistics on all columns in all micro-partitions.

- A. True
- B. False

Answer: A

Explanation:

Snowflake is a single, integrated platform delivered as-a-service. It features storage, compute, and global services layers that are physically separated but logically integrated.

NEW QUESTION 40

- (Exam Topic 1)

True or False: When data share is established between a Data Provider and a data Consumer, the Data Consumer can extend that data share to other Data Consumers.

- A. True
- B. False

Answer: B

Explanation:

Reference: <https://docs.snowflake.com/en/user-guide/data-sharing-intro.html>

NEW QUESTION 43

- (Exam Topic 1)

When scaling out by adding clusters to a multi-cluster warehouse, you are primarily scaling for improved:

- A. Concurrency
- B. Performance

Answer: A

Explanation:

Reference: <https://docs.snowflake.com/en/user-guide/warehouses-multiclust.html>

NEW QUESTION 45

- (Exam Topic 1)

Which of the following statements are true of Snowflake releases: (Choose two.)

- A. They happen approximately weekly
- B. They roll up and release approximately monthly, but customers can request early release application
- C. During a release, new customer requests/queries/connections transparently move over to the newer version
- D. A customer is assigned a 30 minute window (that can be moved anytime within a week) during which the system will be unavailable and customer is upgraded

Answer: AC

Explanation:

<https://docs.snowflake.com/en/user-guide/intro-releases.html>

NEW QUESTION 49

- (Exam Topic 1)

Which of the following commands sets the Virtual Warehouse for a session?

- A. COPT WAREHOUSE FROM <<Config file> ;
- B. SET warehouse = <<warehouse name>>;
- C. USE WAREHOUSE <<warehouse name>>;
- D. USE VIRTUAL_WAREHOUSE <<warehouse name>>;

Answer: C

Explanation:

Reference: <https://docs.snowflake.com/en/user-guide/warehouses-tasks.html>

NEW QUESTION 53

- (Exam Topic 1)

True or False: Bulk unloading of data from Snowflake supports the use of a SELECT statement.

- A. True
- B. False

Answer: A

Explanation:

Reference: <https://docs.snowflake.com/en/user-guide-data-unload.html>

NEW QUESTION 56

- (Exam Topic 1)

Which of the following languages can be used to implement Snowflake User Defined Functions (UDFs)? Choose 2 answers

- A. Java
- B. JavaScript
- C. SQL
- D. Python

Answer: BC

Explanation:

Reference: <https://docs.snowflake.com/en/sql-reference/user-defined-functions.html>

NEW QUESTION 57

- (Exam Topic 1)

On which of the following cloud platforms can a Snowflake account be hosted? (Choose three.)

- A. Amazon Web Services
- B. Private Virtual Cloud
- C. Oracle Cloud
- D. Microsoft Azure Cloud
- E. Google Cloud Platform
- F. Alibaba Cloud

Answer: ADE

NEW QUESTION 61

- (Exam Topic 1)

In which layer of its architecture does Snowflake store its metadata statistics? Select one.

- A. Storage Layer
- B. Compute Layer
- C. Database Layer
- D. Cloud Service Layer

Answer: D

Explanation:

Reference: <https://hevodata.com/blog/snowflake-architecture-cloud-data-warehouse/>

NEW QUESTION 62

- (Exam Topic 1)

When should you consider disabling auto-suspend for a Virtual Warehouse? Choose 2 answers

- A. When users will be using compute at different times throughout a 24/7 period
- B. When managing a steady workload
- C. When the compute must be available with no delay or lag time
- D. When you don't want to have to manually turn on the Warehouse each time a user needs it

Answer: BC

Explanation:

Reference: <https://docs.snowflake.com/en/user-guide/warehouses-considerations.html>

NEW QUESTION 63

- (Exam Topic 1)

True or False: You can query the files in an External Stage directly without having to load the data into a table.

- A. True
- B. False

Answer: A

Explanation:

Reference: <https://docs.snowflake.com/en/user-guide/tables-external-intro.html>

External tables are read-only, therefore no DML operations can be performed on them; however, external tables can be used for query and join operations. Views can be created against external tables.

NEW QUESTION 65

- (Exam Topic 1)

What is the minimum Snowflake edition that provides multi-cluster warehouses and up to 90 days of Time Travel?

- A. Standard
- B. Premier
- C. Enterprise
- D. Business Critical Edition

Answer: C

Explanation:

Reference: <https://docs.snowflake.com/en/user-guide/intro-editions.html>

NEW QUESTION 69

- (Exam Topic 1)

Which of the following terms best describes Snowflake's database architecture?

- A. Columnar shared nothing
- B. Shared disk
- C. Multi-cluster, shared data
- D. Cloud-native shared memory

Answer: C

Explanation:

<https://www.snowflake.com/product/architecture/>

Built from the ground up for the cloud, Snowflake's unique multi-cluster shared data architecture delivers the performance, scale, elasticity, and concurrency today's organizations require.

NEW QUESTION 70

- (Exam Topic 1)

True or False: The COPY command must specify a File Format in order to execute.

- A. True
- B. False

Answer: B

Explanation:

Create Stage:

<https://docs.snowflake.com/en/sql-reference/sql/create-stage.html> Create Table (STAGE_FILE_FORMAT option): <https://docs.snowflake.com/en/sql-reference/sql/create-table.html> Copy Into:

<https://docs.snowflake.com/en/sql-reference/sql/copy-into-table.html>

NEW QUESTION 75

- (Exam Topic 1)

True or False: Snowpipe via RFST API can only reference External Stages as source.

- A. True
- B. False

Answer: B

Explanation:

Reference: <https://community.snowflake.com/s/article/Making-Transient-table-by-Default>

NEW QUESTION 78

- (Exam Topic 1)

Which of the following statements describes a benefit of Snowflake's separation of compute and storage?
(Choose all that apply.)

- A. Growth of storage and compute are tightly coupled together
- B. Storage expands without the requirement to add more compute
- C. Compute can be scaled up or down without the requirement to add more storage
- D. Multiple compute clusters can access stored data without contention

Answer: BCD

Explanation:

Reference:

<https://towardsdatascience.com/why-you-are-throwing-money-away-if-your-cloud-data-warehouse-doesnt-separate-storage-and-compute-65d2dff450f>

NEW QUESTION 79

- (Exam Topic 1)

The number of queries that a Virtual Warehouse can concurrently process is determined by: Choose 2 answers

- A. The complexity of each query
- B. The CONCURRENT_QUERY_UMIT parameter set on the Snowflake account
- C. The size of the data required for each query
- D. The tool that is executing the query

Answer: AC

Explanation:

Reference: <https://docs.snowflake.com/en/user-guide/warehouses-overview.html>

NEW QUESTION 84

- (Exam Topic 1)

True or False: A table in Snowflake can only be queried using the Virtual Warehouse that was used to load the data.

- A. True
- B. False

Answer: B

NEW QUESTION 88

- (Exam Topic 1)

True or False: A Virtual Warehouse consumes Snowflake credits even when inactive.

- A. True
- B. False

Answer: B

Explanation:

Reference: <https://docs.snowflake.com/en/user-guide/warehouses-multicloud.html>

NEW QUESTION 89

- (Exam Topic 1)

True or false: it is best practice to define a clustering key on every table.

- A. True
- B. False

Answer: B

Explanation:

Reference: <https://dwgeek.com/how-to-create-snowflake-clustered-tables-examples.html/>

NEW QUESTION 94

- (Exam Topic 1)

True or False: Snowflake's data warehouse was built from the ground up for the cloud in lieu of using an existing database or a platform, like Hadoop, as a base.

- A. True
- B. False

Answer: B

Explanation:

Reference: <https://docs.snowflake.com/en/user-guide/intro-key-concepts.html>

NEW QUESTION 95

- (Exam Topic 1)

True or False: When Snowflake is configured to use Single Sign-on (sso), Snowflake receive the usernames and credentials from the sso service and loads them into the customer's Snowflake account.

- A. True
- B. false:

Answer: B

Explanation:

Reference: <https://docs.snowflake.com/en/user-guide/admin-security-fed-auth-configure-snowflake.html>

NEW QUESTION 98

- (Exam Topic 1)

True or False: Multi_Factor Authentication (MFA) in Snowflake is only supported in conjunction with single Sign-on (sso).

- A. True
- B. False

Answer: B

Explanation:

Reference: <https://docs.snowflake.com/en/user-guide/admin-security-fed-auth-use.html>

NEW QUESTION 101

- (Exam Topic 1)

True or False: The user has to specify which cluster a query will run on in multi-clustering Warehouse.

- A. True
- B. False

Answer: B

Explanation:

Reference: <https://docs.snowflake.com/en/user-guide/warehouses-multiclust.html>

NEW QUESTION 102

- (Exam Topic 2)

Which of the following Snowflake features provide continuous data protection automatically? (Select TWO).

- A. Internal stages
- B. Incremental backups
- C. Time Travel
- D. Zero-copy clones
- E. Fail-safe

Answer: CE

Explanation:

Time travel and fail safe are the two continuous data protection features support the recovery of data automatically.

Snowflake provides powerful CDP features for ensuring the maintenance and availability of your historical data (i.e. data that has been changed or deleted):

- Querying, cloning, and restoring historical data in tables, schemas, and databases for up to 90 days through Snowflake Time Travel.
- Disaster recovery of historical data (by Snowflake) through Snowflake Fail-safe. <https://docs.snowflake.com/en/user-guide/data-availability.html>

NEW QUESTION 106

- (Exam Topic 2)

True or False: Reader Accounts are able to extract data from shared data objects for use outside of Snowflake.

- A. True
- B. False

Answer: A

NEW QUESTION 111

- (Exam Topic 2)

During periods of warehouse contention which parameter controls the maximum length of time a warehouse will hold a query for processing?

- A. STATEMENT_TIMEOUT__IN__SECONDS
- B. STATEMENT_QUEUED_TIMEOUT_IN_SECONDS
- C. MAX_CONCURRENCY LEVEL
- D. QUERY_TIMEOUT_IN_SECONDS

Answer: B

Explanation:

The parameter STATEMENT_QUEUED_TIMEOUT_IN_SECONDS

sets the limit for a query to wait in

the queue in order to get its chance of running on the warehouse. The query will quit after reaching this limit. By default, the value of this parameter is 0 which mean the queries will wait indefinitely in the waiting queue

<https://community.snowflake.com/s/article/Warehouse-Concurrency-and-Statement-Timeout-Parameters#:~:text=>

NEW QUESTION 116

- (Exam Topic 2)

What is a machine learning and data science partner within the Snowflake Partner Ecosystem?

- A. Informatica
- B. Power BI
- C. Adobe
- D. Data Robot

Answer: D

Explanation:

<https://docs.snowflake.com/en/user-guide/ecosystem-analytics.html>

NEW QUESTION 121

- (Exam Topic 2)

Which of the following Snowflake objects can be shared using a secure share? (Select TWO).

- A. Materialized views
- B. Sequences
- C. Procedures
- D. Tables
- E. Secure User Defined Functions (UDFs)

Answer: DE

Explanation:

Secure Data Sharing enables sharing selected objects in a database in your account with other Snowflake accounts. The following Snowflake database objects can be shared:

- > Tables
- > External tables
- > Secure views
- > Secure materialized views
- > Secure UDFs

<https://docs.snowflake.com/en/user-guide/data-sharing-intro.html>

NEW QUESTION 124

- (Exam Topic 2)

A user has 10 files in a stage containing new customer data. The ingest operation completes with no errors, using the following command:

COPY INTO my__table FROM @my__stage;

The next day the user adds 10 files to the stage so that now the stage contains a mixture of new customer data and updates to the previous data. The user did not remove the 10 original files.

If the user runs the same copy into command what will happen?

- A. All data from all of the files on the stage will be appended to the table
- B. Only data about new customers from the new files will be appended to the table
- C. The operation will fail with the error uncertain files in stage.
- D. All data from only the newly-added files will be appended to the table.

Answer: A

NEW QUESTION 125

- (Exam Topic 2)

When reviewing the load for a warehouse using the load monitoring chart, the chart indicates that a high volume of Queries are always queuing in the warehouse According to recommended best practice, what should be done to reduce the Queue volume? (Select TWO).

- A. Use multi-clustered warehousing to scale out warehouse capacity.
- B. Scale up the warehouse size to allow Queries to execute faster.
- C. Stop and start the warehouse to clear the queued queries
- D. Migrate some queries to a new warehouse to reduce load

E. Limit user access to the warehouse so fewer queries are run against it.

Answer: AD

NEW QUESTION 128

- (Exam Topic 2)

True or False: It is possible for a user to run a query against the query result cache without requiring an active Warehouse.

- A. True
- B. False

Answer: A

Explanation:

Query result cache is all about fetching the data from cloud services layer and saving the cost by not running the virtual warehouse.

NEW QUESTION 129

- (Exam Topic 2)

What is the purpose of an External Function?

- A. To call code that executes outside of Snowflake
- B. To run a function in another Snowflake database
- C. To share data in Snowflake with external parties
- D. To ingest data from on-premises data sources

Answer: A

Explanation:

<https://docs.snowflake.com/en/sql-reference/external-functions.html>

NEW QUESTION 132

- (Exam Topic 2)

Will data cached in a warehouse be lost when the warehouse is resized?

- A. Possibly, if the warehouse is resized to a smaller size and the cache no longer fits.
- B. Ye
- C. because the compute resource is replaced in its entirety with a new compute resource.
- D. N
- E. because the size of the cache is independent from the warehouse size
- F. Ye
- G. became the new compute resource will no longer have access to the cache encryption key

Answer: A

NEW QUESTION 135

- (Exam Topic 2)

How long is Snowpipe data load history retained?

- A. As configured in the create pipe settings
- B. Until the pipe is dropped
- C. 64 days
- D. 14 days

Answer: C

Explanation:

Bulk data load

Stored in the metadata of the target table for 64 days. Available upon completion of the COPY statement as the statement output.

<https://docs.snowflake.com/en/user-guide/data-load-snowpipe-intro.html#:~:text=Load%20History,-Bulk%20da>

NEW QUESTION 136

- (Exam Topic 2)

Which stage type can be altered and dropped?

- A. Database stage
- B. External stage
- C. Table stage
- D. User stage

Answer: C

Explanation:

<https://docs.snowflake.com/en/user-guide/data-load-local-file-system-create-stage.html#table-stages>

NEW QUESTION 141

- (Exam Topic 2)

What happens to the underlying table data when a CLUSTER BY clause is added to a Snowflake table?

- A. Data is hashed by the cluster key to facilitate fast searches for common data values
- B. Larger micro-partitions are created for common data values to reduce the number of partitions that must be scanned
- C. Smaller micro-partitions are created for common data values to allow for more parallelism
- D. Data may be colocated by the cluster key within the micro-partitions to improve pruning performance

Answer: D

NEW QUESTION 145

- (Exam Topic 2)

What Snowflake role must be granted for a user to create and manage accounts?

- A. ACCOUNTADMIN
- B. ORGADMIN
- C. SECURITYADMIN
- D. SYSADMIN

Answer: A

Explanation:

<https://docs.snowflake.com/en/user-guide/security-access-control-considerations.html>

NEW QUESTION 150

- (Exam Topic 2)

Which Snowflake partner specializes in data catalog solutions?

- A. Alation
- B. DataRobot
- C. dbt
- D. Tableau

Answer: A

Explanation:

Alation provides Data Cataloging functionality. They state they are the 'One Place to Find, Understand, & Govern Data Across an Enterprise.

<https://docs.snowflake.com/en/user-guide/ecosystem-all.html>

NEW QUESTION 153

- (Exam Topic 2)

Which of the following are best practice recommendations that should be considered when loading data into Snowflake? (Select TWO).

- A. Load files that are approximately 25 MB or smaller.
- B. Remove all dates and timestamps.
- C. Load files that are approximately 100-250 MB (or larger)
- D. Avoid using embedded characters such as commas for numeric data types
- E. Remove semi-structured data types

Answer: CD

Explanation:

<https://docs.snowflake.com/en/user-guide/data-load-considerations-prepare.html>

NEW QUESTION 157

- (Exam Topic 2)

Which of the following indicates that it may be appropriate to use a clustering key for a table? (Select TWO).

- A. The table contains a column that has very low cardinality
- B. DML statements that are being issued against the table are blocked
- C. The table has a small number of micro-partitions
- D. Queries on the table are running slower than expected
- E. The clustering depth for the table is large

Answer: AE

NEW QUESTION 158

- (Exam Topic 2)

What is a best practice after creating a custom role?

- A. Create the custom role using the SYSADMIN role.
- B. Assign the custom role to the SYSADMIN role
- C. Assign the custom role to the PUBLIC role
- D. Add__CUSTOM to all custom role names

Answer: B

Explanation:

When creating roles that will serve as the owners of securable objects in the system, Snowflake recommends creating a hierarchy of custom roles, with the top-most custom role assigned to the system role SYSADMIN. This role structure allows system administrators to manage all objects in the account, such as warehouses and database objects, while restricting management of users and roles to the USERADMIN role.

NEW QUESTION 160

- (Exam Topic 2)

In the query profiler view for a query, which components represent areas that can be used to help optimize query performance? (Select TWO)

- A. Bytes scanned
- B. Bytes sent over the network
- C. Number of partitions scanned
- D. Percentage scanned from cache
- E. External bytes scanned

Answer: AC

NEW QUESTION 162

- (Exam Topic 2)

Which Snowflake feature is used for both querying and restoring data?

- A. Cluster keys
- B. Time Travel
- C. Fail-safe
- D. Cloning

Answer: B

Explanation:

[https://docs.snowflake.com/en/user-guide/data-availability.html#:~:text=Snowflake%20provides%20powerful%](https://docs.snowflake.com/en/user-guide/data-availability.html#:~:text=Snowflake%20provides%20powerful%20)

NEW QUESTION 163

- (Exam Topic 2)

What are ways to create and manage data shares in Snowflake? (Select TWO)

- A. Through the Snowflake web interface (UI)
- B. Through the DATA_SHARE=TRUE parameter
- C. Through SQL commands
- D. Through the enable share=true parameter
- E. Using the CREATE SHARE AS SELECT * TABLE command

Answer: CD

NEW QUESTION 166

- (Exam Topic 2)

What is the recommended file sizing for data loading using Snowpipe?

- A. A compressed file size greater than 100 MB, and up to 250 MB
- B. A compressed file size greater than 100 GB, and up to 250 GB
- C. A compressed file size greater than 10 MB, and up to 100 MB
- D. A compressed file size greater than 1 GB, and up to 2 GB

Answer: A

Explanation:

<https://www.phdata.io/blog/how-to-optimize-snowpipe-data-load/#:~:text=Snowpipe%20is%20typically%20use>

NEW QUESTION 170

- (Exam Topic 3)

Which command should be used to load data from a file, located in an external stage, into a table in Snowflake?

- A. INSERT
- B. PUT
- C. GET
- D. COPY

Answer: D

NEW QUESTION 174

- (Exam Topic 3)

Which of the following is an example of an operation that can be completed without requiring compute, assuming no queries have been executed previously?

- A. SELECT SUM (ORDER_AMT) FROM SALES;
- B. SELECT AVG(ORDER_QTY) FROM SALES;
- C. SELECT MIN(ORDER_AMT) FROM SALES;
- D. SELECT ORDER_AMT * ORDER_QTY FROM SALES;

Answer: B

NEW QUESTION 179

- (Exam Topic 3)

Which of the following features, associated with Continuous Data Protection (CDP), require additional Snowflake-provided data storage? (Choose two.)

- A. Tri-Secret Secure
- B. Time Travel
- C. Fail-safe
- D. Data encryption
- E. External stages

Answer: BC

NEW QUESTION 184

- (Exam Topic 3)

What is the recommended compressed file size range for continuous data loads using Snowpipe?

- A. 8-16 MB
- B. 16-24 MB
- C. 10-99 MB
- D. 100-250 MB

Answer: B

NEW QUESTION 187

- (Exam Topic 3)

A single user of a virtual warehouse has set the warehouse to auto-resume and auto-suspend after 10 minutes. The warehouse is currently suspended and the user performs the following actions:

- * 1. Runs a query that takes 3 minutes to complete
- * 2. Leaves for 15 minutes
- * 3. Returns and runs a query that takes 10 seconds to complete
- * 4. Manually suspends the warehouse as soon as the last query was completed

When the user returns, how much billable compute time will have been consumed?

- A. 4 minutes
- B. 10 minutes
- C. 14 minutes
- D. 24 minutes

Answer: C

NEW QUESTION 189

- (Exam Topic 3)

Which Snowflake function will interpret an input string as a JSON document, and produce a VARIANT value?

- A. parse_json()
- B. json_extract_path_text()
- C. object_construct()
- D. flatten

Answer: B

NEW QUESTION 193

- (Exam Topic 3)

What is the minimum Snowflake edition that has column-level security enabled?

- A. Standard
- B. Enterprise
- C. Business Critical
- D. Virtual Private Snowflake

Answer: B

NEW QUESTION 198

- (Exam Topic 3)

What happens to the shared objects for users in a consumer account from a share, once a database has been created in that account?

- A. The shared objects are transferred.
- B. The shared objects are copied.
- C. The shared objects become accessible.
- D. The shared objects can be re-shared.

Answer: B

NEW QUESTION 199

- (Exam Topic 3)

How many days is load history for Snowpipe retained?

- A. 1 day
- B. 7 days
- C. 14 days
- D. 64 days

Answer: C

NEW QUESTION 202

- (Exam Topic 3)

The following JSON is stored in a VARIANT column called src of the CAR_SALES table:

```
{
  "customer": [
    {
      "address": "San Francisco, CA",
      "name": "Jane Doe"
    }
  ],
  "date": "2022-01-28",
  "dealership": "Town Auto Sales",
  "salesperson": {
    "id": "55"
  }
}
```

A user needs to extract the dealership information from the JSON. How can this be accomplished?

- A. select src:dealership from car_sales;
- B. select src.dealership from car_sales;
- C. select src:Dealership from car_sales;
- D. select dealership from car_sales;

Answer: A

NEW QUESTION 207

- (Exam Topic 3)

The first user assigned to a new account, ACCOUNTADMIN, should create at least one additional user with which administrative privilege?

- A. USERADMIN
- B. PUBLIC
- C. ORGADMIN
- D. SYSADMIN

Answer: D

NEW QUESTION 211

- (Exam Topic 3)

Which command should be used to download files from a Snowflake stage to a local folder on a client's machine?

- A. PUT
- B. GET
- C. COPY
- D. SELECT

Answer: B

Explanation:

Reference: <https://docs.snowflake.com/en/sql-reference/sql/get.html>

NEW QUESTION 216

- (Exam Topic 3)

What is the purpose of multi-cluster virtual warehouses?

- A. To create separate data warehouses to increase query optimization
- B. To allow users the ability to choose the type of compute nodes that make up a virtual warehouse cluster
- C. To eliminate or reduce Queuing of concurrent queries
- D. To allow the warehouse to resize automatically

Answer: C

Explanation:

<https://docs.snowflake.com/en/user-guide/warehouses-multicloud.html#:~:text=Multi%2Dcluster%20warehous>

NEW QUESTION 220

- (Exam Topic 3)

How many resource monitors can be assigned at the account level?

- A. 1
- B. 2
- C. 3
- D. 4

Answer: A

NEW QUESTION 224

- (Exam Topic 3)

Which statement describes pruning?

- A. The filtering or disregarding of micro-partitions that are not needed to return a query.
- B. The return of micro-partitions values that overlap with each other to reduce a query's runtime.
- C. A service that is handled by the Snowflake Cloud Services layer to optimize caching.
- D. The ability to allow the result of a query to be accessed as if it were a table.

Answer: A

NEW QUESTION 229

- (Exam Topic 3)

Which of the following is a data tokenization integration partner?

- A. Protegrity
- B. Tableau
- C. DBeaver
- D. SAP

Answer: A

NEW QUESTION 234

- (Exam Topic 3)

Which SQL command can be used to see the CREATE definition of a masking policy?

- A. SHOW MASKING POLICIES
- B. DESCRIBE MASKING POLICY
- C. GET_DDL
- D. LIST MASKING POLICIES

Answer: C

NEW QUESTION 236

- (Exam Topic 3)

User INQUISITIVE_PERSON has been granted the role DATA_SCIENCE. The role DATA_SCIENCE has privileges OWNERSHIP on the schema MARKETING of the database ANALYTICS_DW.

Which command will show all privileges granted to that schema?

- A. SHOW GRANTS ON ROLE DATA_SCIENCE
- B. SHOW GRANTS ON SCHEMA ANALYTICS_DW.MARKETING
- C. SHOW GRANTS TO USER INQUISITIVE_PERSON
- D. SHOW GRANTS OF ROLE DATA_SCIENCE

Answer: B

NEW QUESTION 238

- (Exam Topic 3)

What is a responsibility of Snowflake's virtual warehouses?

- A. Infrastructure management
- B. Metadata management
- C. Query execution
- D. Query parsing and optimization
- E. Permanent storage of micro-partitions

Answer: C

Explanation:

Reference:

<https://docs.snowflake.com/en/user-guide/warehouses.html#:~:text=A%20warehouse%20provides%20the%20re>

NEW QUESTION 239

- (Exam Topic 3)

What is the default file size when unloading data from Snowflake using the COPY command?

- A. 5 MB
- B. 8 GB
- C. 16 MB
- D. 32 MB

Answer: C

NEW QUESTION 243

- (Exam Topic 3)

Which command can be used to load data files into a Snowflake stage?

- A. JOIN
- B. COPY INTO
- C. PUT
- D. GET

Answer: C

NEW QUESTION 246

- (Exam Topic 3)

What do the terms scale up and scale out refer to in Snowflake? (Choose two.)

- A. Scaling out adds clusters of the same size to a virtual warehouse to handle more concurrent queries.
- B. Scaling out adds clusters of varying sizes to a virtual warehouse.
- C. Scaling out adds additional database servers to an existing running cluster to handle more concurrent queries.
- D. Snowflake recommends using both scaling up and scaling out to handle more concurrent queries.
- E. Scaling up resizes a virtual warehouse so it can handle more complex workloads.
- F. Scaling up adds additional database servers to an existing running cluster to handle larger workloads.

Answer: AE

NEW QUESTION 249

- (Exam Topic 3)

Users are responsible for data storage costs until what occurs?

- A. Data expires from Time Travel
- B. Data expires from Fail-safe
- C. Data is deleted from a table
- D. Data is truncated from a table

Answer: B

NEW QUESTION 251

- (Exam Topic 3)

Which privilege is required for a role to be able to resume a suspended warehouse if auto-resume is not enabled?

- A. USAGE
- B. OPERATE
- C. MONITOR
- D. MODIFY

Answer: B

Explanation:

Reference:

<https://community.snowflake.com/s/question/0D50Z00008yHYdqSAG/auto-resume-operate-warehouse-privileg>

NEW QUESTION 255

- (Exam Topic 3)

Which services does the Snowflake Cloud Services layer manage? (Choose two.)

- A. Compute resources
- B. Query execution
- C. Authentication
- D. Data storage
- E. Metadata

Answer: CE

NEW QUESTION 257

- (Exam Topic 3)

What affects whether the query results cache can be used?

- A. If the query contains a deterministic function

- B. If the virtual warehouse has been suspended
- C. If the referenced data in the table has changed
- D. If multiple users are using the same virtual warehouse

Answer: B

NEW QUESTION 260

- (Exam Topic 3)

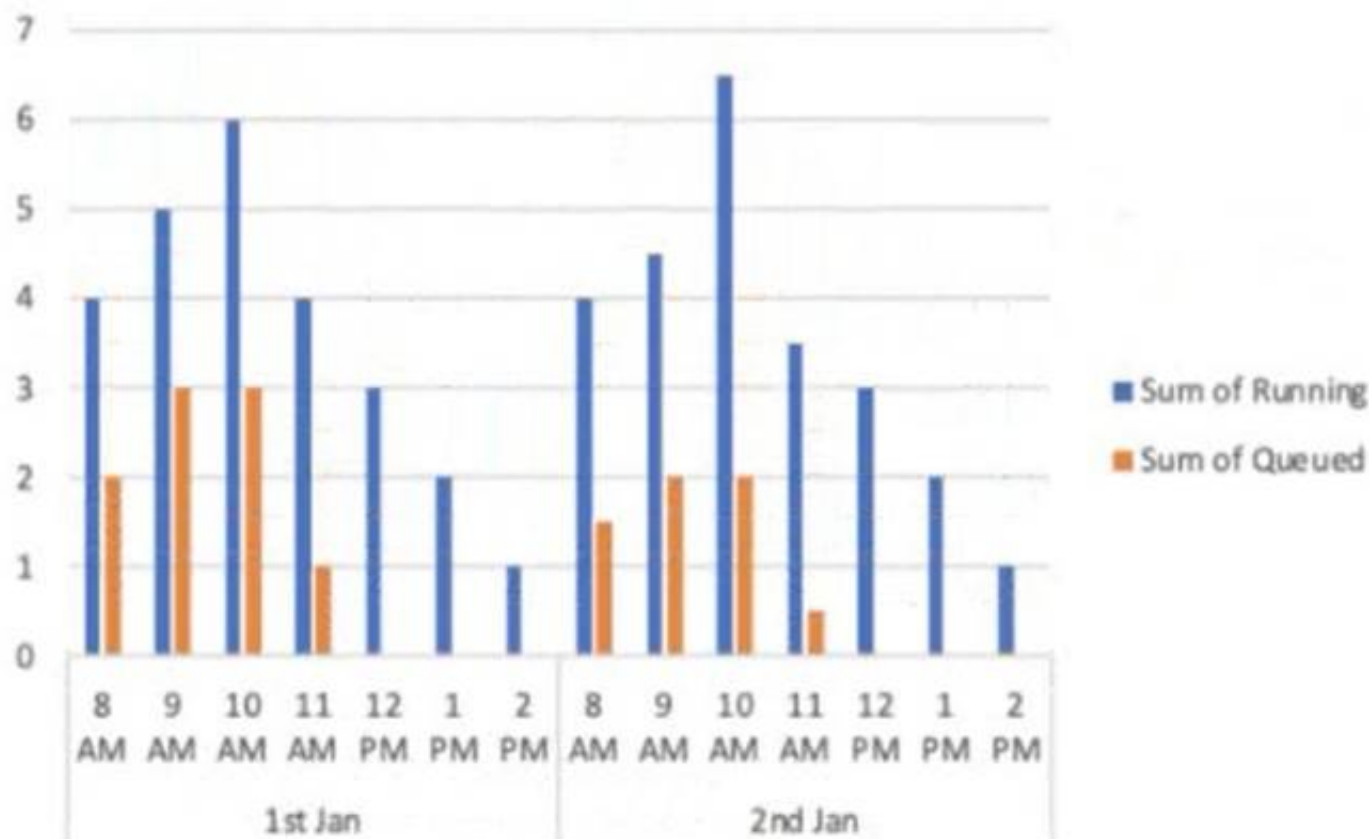
A virtual warehouse is created using the following command:

Create warehouse my_WH with warehouse_size = MEDIUM min_cluster_count = 1

max_cluster_count = 1

auto_suspend = 60 auto_resume = true;

The image below is a graphical representation of the warehouse utilization across two days.



What action should be taken to address this situation?

- A. Increase the warehouse size from Medium to 2XL.
- B. Increase the value for the parameter MAX_CONCURRENCY_LEVEL.
- C. Configure the warehouse to a multi-cluster warehouse.
- D. Lower the value of the parameter STATEMENT_QUEUED_TIMEOUT_IN_SECONDS.

Answer: B

NEW QUESTION 261

- (Exam Topic 3)

Which statement is true about running tasks in Snowflake?

- A. A task can be called using a CALL statement to run a set of predefined SQL commands.
- B. A task allows a user to execute a single SQL statement/command using a predefined schedule.
- C. A task allows a user to execute a set of SQL commands on a predefined schedule.
- D. A task can be executed using a SELECT statement to run a predefined SQL command.

Answer: C

NEW QUESTION 264

- (Exam Topic 3)

Which of the following practices are recommended when creating a user in Snowflake? (Choose two.)

- A. Configure the user to be initially disabled.
- B. Force an immediate password change.
- C. Set a default role for the user.
- D. Set the number of minutes to unlock to 15 minutes.
- E. Set the user's access to expire within a specified timeframe.

Answer: AE

NEW QUESTION 269

- (Exam Topic 3)

Which TABLE function helps to convert semi-structured data to a relational representation?

- A. CHECK_JSON
- B. TO_JSON
- C. FLATTEN
- D. PARSE_JSON

Answer: D

NEW QUESTION 274

- (Exam Topic 3)

Which of the following objects can be directly restored using the UNDROP command? (Choose two.)

- A. Schema
- B. View
- C. Internal stage
- D. Table
- E. User
- F. Role

Answer: AD

NEW QUESTION 277

- (Exam Topic 3)

What are advantages clones have over tables created with CREATE TABLE AS SELECT statement? (Choose two.)

- A. The clone always stays in sync with the original table.
- B. The clone has better query performance.
- C. The clone is created almost instantly.
- D. The clone will have time travel history from the original table.
- E. The clone saves space by not duplicating storage.

Answer: CE

NEW QUESTION 282

- (Exam Topic 3)

Which parameter can be used to instruct a COPY command to verify data files instead of loading them into a specified table?

- A. STRIP_NULL_VALUES
- B. SKIP_BYTE_ORDER_MARK
- C. REPLACE_INVALID_CHARACTERS
- D. VALIDATION_MODE

Answer: D

Explanation:

<https://docs.snowflake.com/en/sql-reference/sql/copy-into-table.html>

VALIDATION_MODE = RETURN_ROWS | RETURN_ERRORS | RETURN_ALL_ERRORS

String (constant) that instructs the COPY command to validate the data files instead of loading them into the

specified table; i.e. the COPY command tests the files for errors but does not load them. The command validates the data to be loaded and returns results based on the validation option specified:

NEW QUESTION 285

- (Exam Topic 3)

How does Snowflake Fail-safe protect data in a permanent table?

- A. Fail-safe makes data available up to 1 day, recoverable by user operations.
- B. Fail-safe makes data available for 7 days, recoverable by user operations.
- C. Fail-safe makes data available for 7 days, recoverable only by Snowflake Support.
- D. Fail-safe makes data available up to 1 day, recoverable only by Snowflake Support.

Answer: C

NEW QUESTION 286

- (Exam Topic 3)

Which formats does Snowflake store unstructured data in? (Choose two.)

- A. GeoJSON
- B. Array
- C. XML
- D. Object
- E. BLOB

Answer: DE

NEW QUESTION 290

- (Exam Topic 3)

When should a multi-cluster warehouse be used in auto-scaling mode?

- A. When it is unknown how much compute power is needed
- B. If the select statement contains a large number of temporary tables or Common Table Expressions (CTEs)
- C. If the runtime of the executed query is very slow
- D. When a large number of concurrent queries are run on the same warehouse

Answer: D

NEW QUESTION 293

- (Exam Topic 3)

What impacts the credit consumption of maintaining a materialized view? (Choose two.)

- A. Whether or not it is also a secure view
- B. How often the underlying base table is queried
- C. How often the base table changes
- D. Whether the materialized view has a cluster key defined
- E. How often the materialized view is queried

Answer: DE

NEW QUESTION 295

- (Exam Topic 3)

What is the SNOWFLAKE.ACCOUNT_USAGE view that contains information about which objects were read by queries within the last 365 days (1 year)?

- A. VIEWS_HISTORY
- B. OBJECT_HISTORY
- C. ACCESS_HISTORY
- D. LOGIN_HISTORY

Answer: C

NEW QUESTION 299

- (Exam Topic 3)

Which Snowflake tool would be BEST to troubleshoot network connectivity?

- A. SnowCLI
- B. SnowUI
- C. SnowSQL
- D. SnowCD

Answer: D

Explanation:

[https://docs.snowflake.com/en/user-guide/snowcd.html#:~:text=SnowCD%20\(i.e.%20Snowflake%20Connectivi](https://docs.snowflake.com/en/user-guide/snowcd.html#:~:text=SnowCD%20(i.e.%20Snowflake%20Connectivi)

NEW QUESTION 303

- (Exam Topic 3)

When cloning a database containing stored procedures and regular views, that have fully qualified table references, which of the following will occur?

- A. The cloned views and the stored procedures will reference the cloned tables in the cloned database.
- B. An error will occur, as views with qualified references cannot be cloned.
- C. An error will occur, as stored objects cannot be cloned.
- D. The stored procedures and views will refer to tables in the source database.

Answer: D

NEW QUESTION 305

- (Exam Topic 3)

Which statements are correct concerning the leveraging of third-party data from the Snowflake Data Marketplace? (Choose two.)

- A. Data is live, ready-to-query, and can be personalized.
- B. Data needs to be loaded into a cloud provider as a consumer account.
- C. Data is not available for copying or moving to an individual Snowflake account.
- D. Data is available without copying or moving.
- E. Data transformations are required when combining Data Marketplace datasets with existing data in Snowflake.

Answer: AD

NEW QUESTION 306

- (Exam Topic 3)

For non-materialized views, what column in Information Schema and Account Usage identifies whether a view is secure or not?

- A. CHECK_OPTION
- B. IS_SECURE
- C. IS_UPDATEABLE
- D. TABLE_NAME

Answer: B

NEW QUESTION 309

- (Exam Topic 3)

Which of the following features are available with the Snowflake Enterprise edition? (Choose two.)

- A. Database replication and failover
- B. Automated index management
- C. Customer managed keys (Tri-secret secure)
- D. Extended time travel
- E. Native support for geospatial data

Answer: AD

NEW QUESTION 311

.....

THANKS FOR TRYING THE DEMO OF OUR PRODUCT

Visit Our Site to Purchase the Full Set of Actual SnowPro-Core Exam Questions With Answers.

We Also Provide Practice Exam Software That Simulates Real Exam Environment And Has Many Self-Assessment Features. Order the SnowPro-Core Product From:

<https://www.2passeasy.com/dumps/SnowPro-Core/>

Money Back Guarantee

SnowPro-Core Practice Exam Features:

- * SnowPro-Core Questions and Answers Updated Frequently
- * SnowPro-Core Practice Questions Verified by Expert Senior Certified Staff
- * SnowPro-Core Most Realistic Questions that Guarantee you a Pass on Your FirstTry
- * SnowPro-Core Practice Test Questions in Multiple Choice Formats and Updatesfor 1 Year