

AD0-E117 Dumps

Adobe Experience Manager Architect Master

<https://www.certleader.com/AD0-E117-dumps.html>



NEW QUESTION 1

An Architect needs to design a deployment process without downtime for end users. The system architecture contains an AEM author, two AEM publishers, two publish Dispatchers, and a centrally managed load balancer. The publishers serve some content that cannot be cached. Which two actions should the Architect take to meet these requirements? (Choose two.)

- A. Connect each publish Dispatcher to one AEM publish
- B. Use each publish Dispatcher to load-balance to both AEM publishers
- C. Deploy software packages by replicating them from author to publishers
- D. Configure the centrally managed load balancer to connect directly to the AEM publisher that is not being dedKyed to
- E. Deploy software package to AEM Publishers one by one

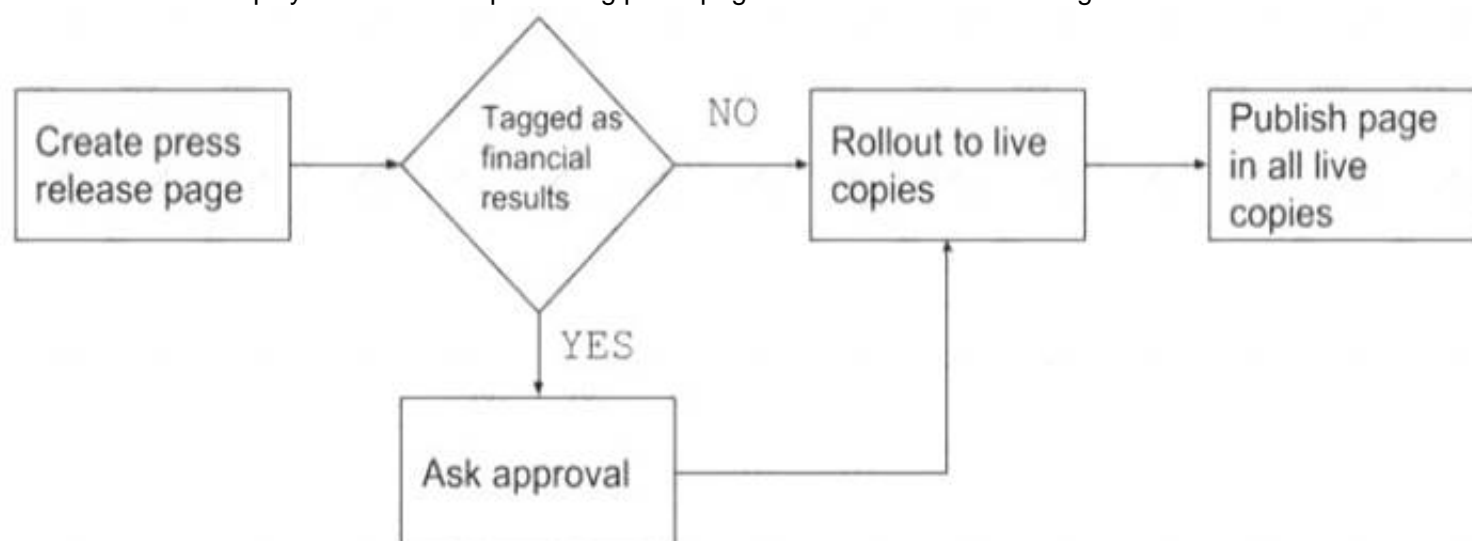
Answer: BE

Explanation:

“using each publish Dispatcher to load-balance to both AEM publishers can provide high availability and fault tolerance. Deploying software packages to AEM Publishers one by one can avoid downtime for end users”.

NEW QUESTION 2

A customer wants to simplify and automate publishing press pages and defines the following flows:



What should the Architect recommend?

- A. Create a custom workflow
- B. Advise the customer to use Launches
- C. Implement a Sling event listener that triggers on page creation
- D. Configure MSM with the "Activate on Blueprint activation" option

Answer: B

Explanation:

Advise the customer to use Launches . According to Adobe Experience Manager documentatio1n, launches in AEM Sites provide a way to create, author, and review web site content for future release. Launches can also be synchronized with the production web site and activated at a scheduled time1

NEW QUESTION 3

A customer wants to migrate their AEM environment from an on-premise infrastructure to a public cloud to improve performance. The customer currently hosts many assets (images, videos, documents) in the DAM. Approximately 10 business users frequently upload new assets and update existing assets. Editors then use these assets on the sites.

What should an Architect do as part of this migration?

- A. Move to a shared datastore and enable binary less replication
- B. Set up Connected Assets to share the DAM assets in the sites
- C. Set up a horizontally scalable AEM environment on MongoDB
- D. Run online revision cleanup before moving to the new storage format

Answer: D

Explanation:

“running online revision cleanup before moving to the new storage format can reduce the size of the repository and improve performance”.

NEW QUESTION 4

An Architect is performing infrastructure and capacity planning for Author servers for a customer using AEM 6.5. Which two factors would lead the Architect to pick a multi-author instance architecture setup? (Choose two.)

- A. Website Traffic handled by servers
- B. Fail safeness of the servers
- C. Number of Parallel Authors
- D. Cache Efficiency on the dispatcher
- E. Types of actions performed by Authors

Answer: BC

Explanation:

“a multi-author instance architecture setup provides failover and load balancing for author servers. It also allows for scaling up the number of parallel authors who can work on the same content without affecting performance”.

NEW QUESTION 5

An AEM customer is designing a new website. The design shows that images are very prominent on the website but there is a concern about the big variety of aspect ratios used. Images can potentially be used on different places and components on the website. The customer is looking for a maintainable solution to limit the amount of content editing work when adding the assets to the pages. Which solution should an Architect recommend?

- A. Integrate with Dynamic Media (Scene 7) and enable smart cropping
- B. Use inline cropping feature of the image component on the pages
- C. Use the cropping feature on the asset in the AEM DAM
- D. Integrate with Dynamic Media (Scene 7) and enable smart imaging

Answer: D

Explanation:

“integrating with Dynamic Media (Scene 7) and enabling smart imaging can optimize the image delivery for different devices and screen sizes without requiring manual cropping”.

NEW QUESTION 6

AEM as a cloud service introduces major changes in the architecture by using containers. Which key architectural change was necessary to allow this to occur?

- A. Using Adobe 10 for asset ingestion and processing, storing it on a separate blob and providing AEM with metadata
- B. Using sling content distribution as the replication mechanism
- C. Using MongoDB for Author environment
- D. Isolating /app and /libs from the content, configurations and state mgmt.

Answer: D

Explanation:

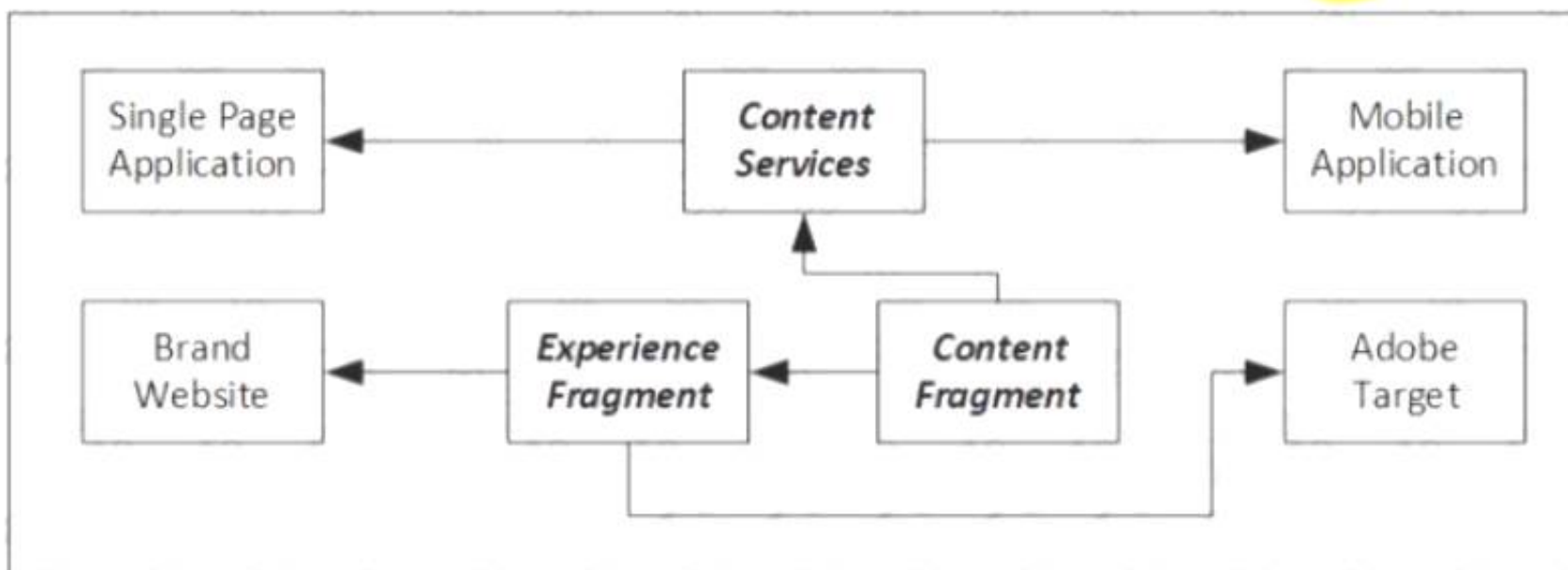
“isolating /app and /libs from the content, configurations and state management allows AEM as a Cloud Service to use containers for scalability and resilience”.

NEW QUESTION 7

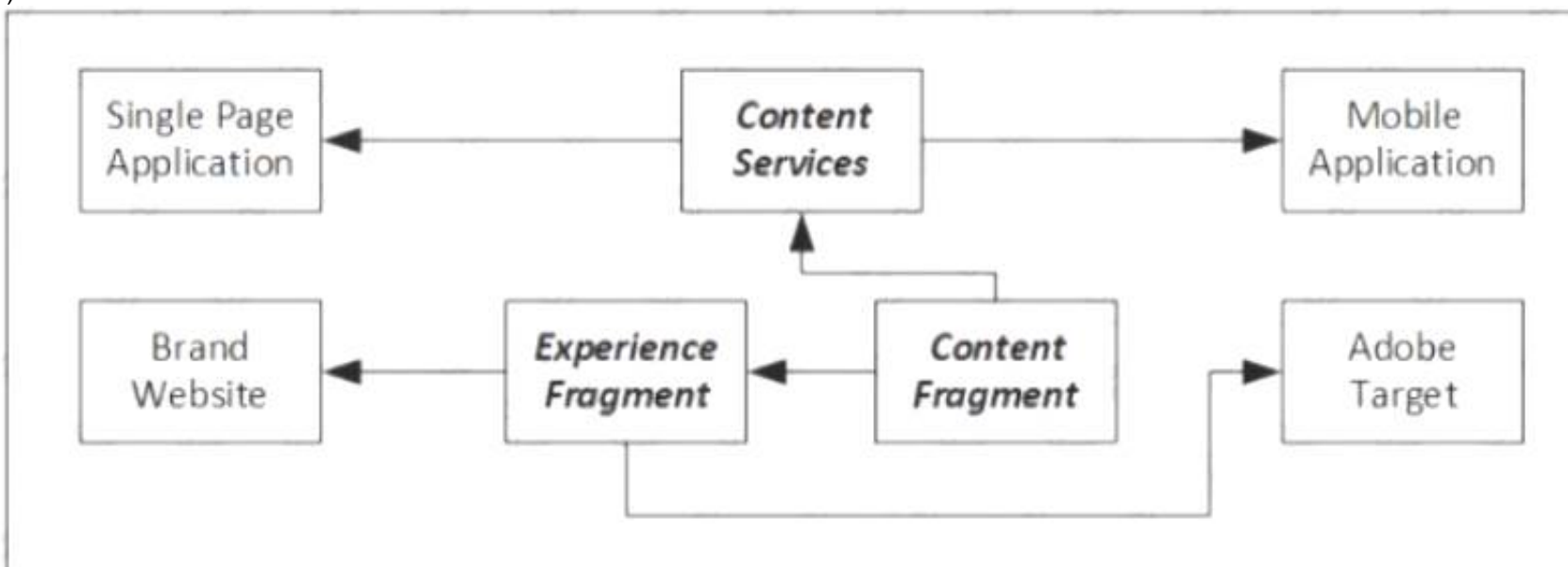
A media company wants to use AEM as content hub for multiple customer touch points:

- Brand-specific marketing websites hosted on AEM Sites
- Single Page Applications using headless content
- Native mobile applications
- Content offers in Adobe Target

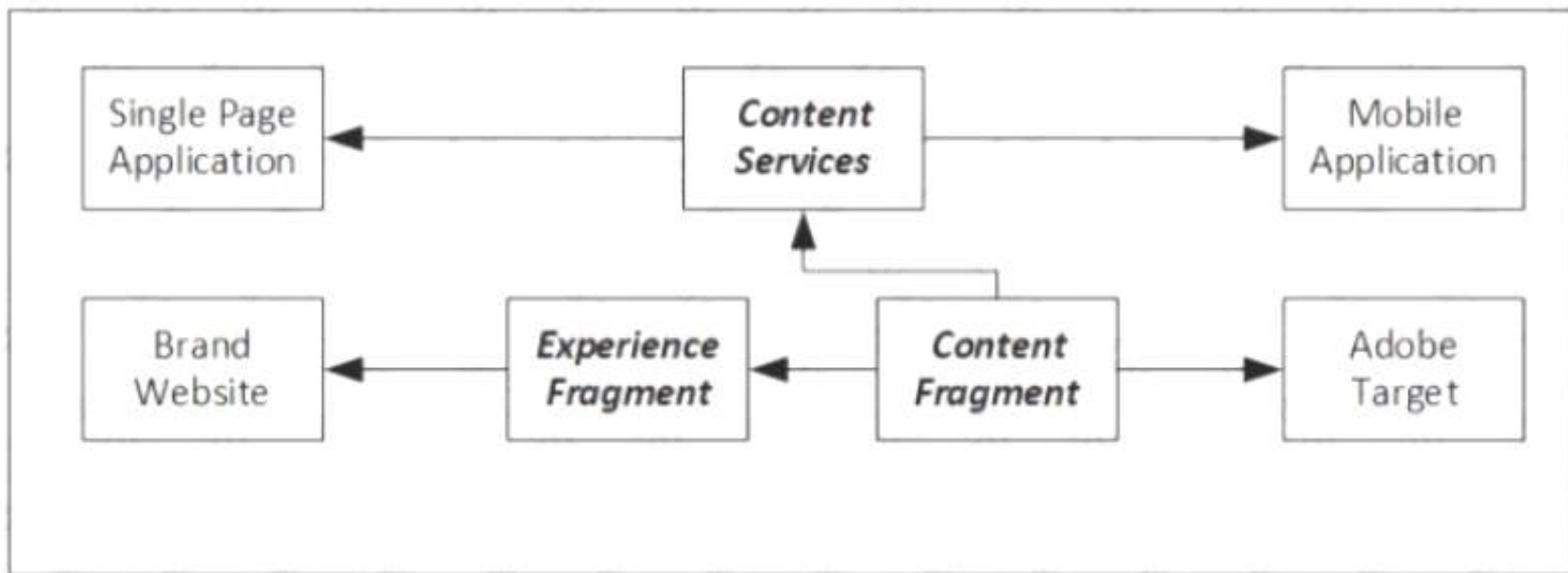
The company wants to manage its content efficiently with its small editor staff. Text should be entered and reviewed only once, then reused for all touch points. How should an Architect incorporate these requirements into a solution that leverages AEM Sites features? A)



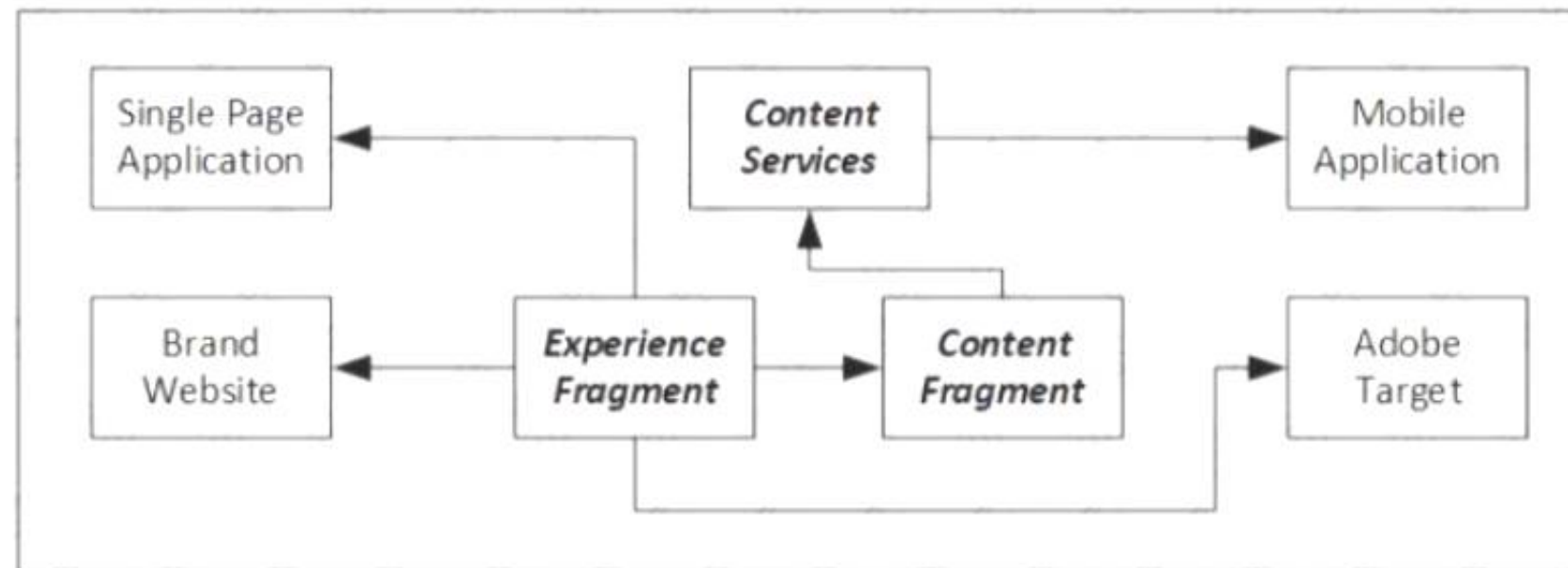
B)



C)



D)



- A. Option A
- B. Option B
- C. Option C
- D. Option D

Answer: B

Explanation:

AEM content fragments are pure content with structured data that can be used to describe and manage content for multiple channels¹²³. Content fragments can be exposed as JSON via AEM Content Services and API Pages for headless delivery⁴. Content fragments can also be used in AEM Sites pages with different layouts and designs using the style system⁵. Option B is the only diagram that shows how content fragments can be created and reused for all touch points using AEM Sites features.

NEW QUESTION 8

During development the AEM Publisher server keeps crashing randomly. The deployment included a new static FAQ component that was used in the websites Contact Us page. An Architect investigates to find the root cause for the random failures, and notices the following parameters:

- The server slows down when requests are sent to the Contact us page
- The number of requests to the page were very few
- Heap dump shows a large number of instances of the FAQ component What is likely causing this issue?

- A. The page was not cached in the Dispatcher.
- B. The component triggers a traversal query.
- C. The JVM garbage collection is not running.
- D. The component has a cyclic dependency to itself

Answer: D

Explanation:

According to Adobe Experience Manager documentation³, a cyclic dependency occurs when a component includes itself either directly or indirectly through another component. This can cause an infinite loop of rendering and consume excessive memory resources, leading to server crashes. To avoid this issue, components should not include themselves or other components that include them

NEW QUESTION 9

A client's site does not show the latest page content for some site visitors. The client has two data centers with each configured with a Dispatcher connected to two Publish machines. The site load issue only occurs intermittently for visitors from one of the data centers.

Which step should the Architect take to resolve the issue?

- A. Disable caching on all impacted data centers Dispatchers to force the Publish machines to serve the page content
- B. Check the Publish instance(s) attached to the Dispatcher associated to the impacted data center
- C. Check the SSL certificate on the impacted data center's load balance.
- D. Review the log files on the Author instances to determine if there are any template errors

Answer: B

Explanation:

“checking the Publish instance(s) attached to the Dispatcher associated to the impacted data center can help identify if there are any replication or caching issues that prevent the latest page content from being served”

NEW QUESTION 10

In a client's test environment AEM QA Testers from multiple groups and regions are testing and making requests to the AEM application. Due to the sheer number of hosts making connections, an Architect needs a quick and easy way to allow any hosts to make requests to the AEM application. Which approach should the Architect take to meet this requirement for this non-production environment?

- A. Add GET as a Filter Method in the Apache Sling Referrer OSGi Configuration
- B. Use Allowlists instead of Blocklists in the Dispatcher Configuration
- C. Restrict Clients that can flush the cache in the Dispatcher Configuration
- D. Enable Allow Empty in the Apache Sling Referrer OSGi Configuration

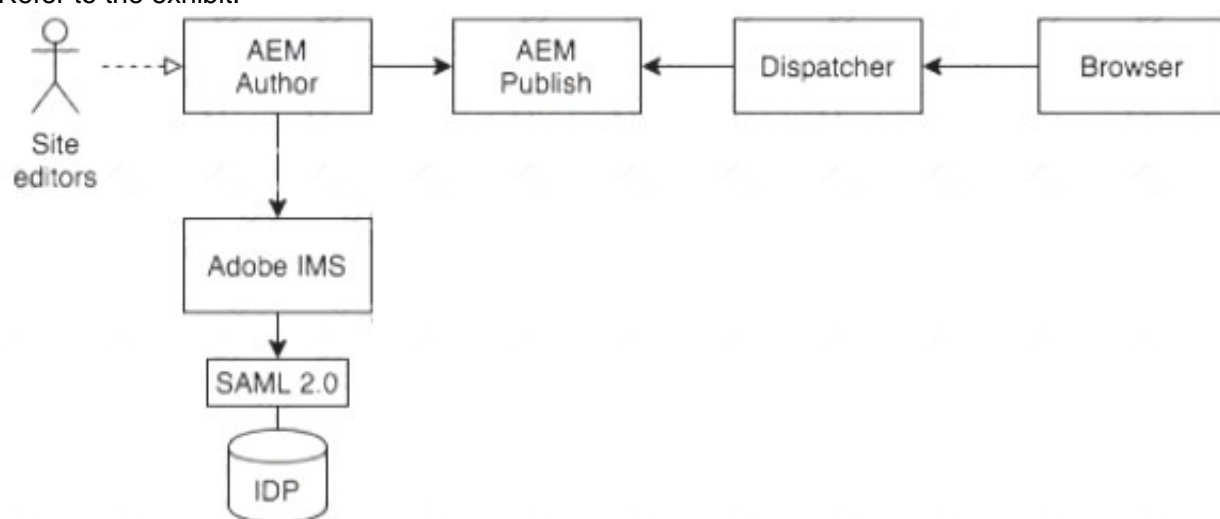
Answer: D

Explanation:

“enabling Allow Empty in the Apache Sling Referrer OSGi Configuration can allow any hosts to make requests to the AEM application without checking the referrer header”.

NEW QUESTION 10

Refer to the exhibit.



A customer has SSO on its AEM Author environment using Adobe IMS, which is integrated with the customer's IDP using SAML. The customer plans to roll out a new secured website on AEM where SSO authentication is required for end users. The end user accounts are also managed in the customer's existing IDP. How should the Architect set up the authentication for the website?

- A. Integrate AEM Publisher using SAML with Adobe IMS
- B. Set up CUG and use User Synchronisation from Author to Publisher
- C. Integrate AEM Publisher using SAML directly with the IDP
- D. Integrate AEM Publisher using OAuth with Adobe IMS

Answer: C

Explanation:

SAML is a common and standard SSO handler that allows a user to access multiple systems after providing authentication credentials once. AEM ships with a SAML 2.0 Authentication Handler that supports signing and encryption of messages, automatic creation of users, and synching groups to existing ones in AEM3. By integrating AEM Publisher using SAML directly with the IDP, the Architect can leverage the existing user accounts and authentication mechanism for the end users of the secured website.

NEW QUESTION 15

A news agency editor wants to publish news articles to an intermediate Publish (preview) instance for internal review before publishing the article to production Publish instance.

Which two steps should the Architect recommend? (Choose two.)

- A. Create a closed user group (CUG) for editors
- B. Create a reverse replication agent on preview server
- C. Create a separate live copy to preview content
- D. Set up a new replication agent for preview server
- E. Create a custom publish workflow

Answer: CD

Explanation:

Create a separate live copy to preview content and set up a new replication agent for preview server1

. According to Adobe Experience Manager documentation, a live copy is used to create a local copy of content from another site that can be modified independently. A replication agent is used to publish content from an author instance to a publish instance. Creating a reverse replication agent on preview server (B) is not necessary as reverse replication is not supported by AEM as a Cloud Service1. Creating a custom publish workflow (E) is also not necessary as workflows are handled by AEM Cloud Service automatically1.

NEW QUESTION 19

.....

Thank You for Trying Our Product

* 100% Pass or Money Back

All our products come with a 90-day Money Back Guarantee.

* One year free update

You can enjoy free update one year. 24x7 online support.

* Trusted by Millions

We currently serve more than 30,000,000 customers.

* Shop Securely

All transactions are protected by VeriSign!

100% Pass Your AD0-E117 Exam with Our Prep Materials Via below:

<https://www.certleader.com/AD0-E117-dumps.html>