



Cisco

Exam Questions 350-201

Performing CyberOps Using Core Security Technologies (CBRCOR)

NEW QUESTION 1

Refer to the exhibit.

Max (K)	Retain	OverflowAction	Entries	Log
15,168	0	OverwriteAsNeeded	20,792	Application
15,168	0	OverwriteAsNeeded	12,559	System
15,360	0	OverwriteAsNeeded	11,173	Windows PowerShell

Which command was executed in PowerShell to generate this log?

- A. Get-EventLog -LogName*
- B. Get-EventLog -List
- C. Get-WinEvent -ListLog* -ComputerName localhost
- D. Get-WinEvent -ListLog*

Answer: A

NEW QUESTION 2

Which command does an engineer use to set read/write/execute access on a folder for everyone who reaches the resource?

- A. chmod 666
- B. chmod 774
- C. chmod 775
- D. chmod 777

Answer: D

NEW QUESTION 3

A malware outbreak is detected by the SIEM and is confirmed as a true positive. The incident response team follows the playbook to mitigate the threat. What is the first action for the incident response team?

- A. Assess the network for unexpected behavior
- B. Isolate critical hosts from the network
- C. Patch detected vulnerabilities from critical hosts
- D. Perform analysis based on the established risk factors

Answer: B

NEW QUESTION 4

Drag and drop the telemetry-related considerations from the left onto their cloud service models on the right.

Answer Area

- Logs, alerts, and events for application performance monitoring and application health are configurable by the customer
- The customer controls limited application configuration settings and obtaining logs for security monitoring may be limited
- Logs, alerts, and events for operating systems are configurable by the customer

- SaaS
- PaaS
- IaaS

- A. Mastered
- B. Not Mastered

Answer: A

Explanation:

Answer Area

Logs, alerts, and events for application performance monitoring and application health are configurable by the customer

The customer controls limited application configuration settings and obtaining logs for security monitoring may be limited

The customer controls limited application configuration settings and obtaining logs for security monitoring may be limited

Logs, alerts, and events for operating systems are configurable by the customer

Logs, alerts, and events for operating systems are configurable by the customer

Logs, alerts, and events for application performance monitoring and application health are configurable by the customer

NEW QUESTION 5

An employee who often travels abroad logs in from a first-seen country during non-working hours. The SIEM tool generates an alert that the user is forwarding an increased amount of emails to an external mail domain and then logs out. The investigation concludes that the external domain belongs to a competitor. Which two behaviors triggered UEBA? (Choose two.)

- A. domain belongs to a competitor
- B. log in during non-working hours
- C. email forwarding to an external domain
- D. log in from a first-seen country
- E. increased number of sent mails

Answer: AB

NEW QUESTION 6

The incident response team was notified of detected malware. The team identified the infected hosts, removed the malware, restored the functionality and data of infected systems, and planned a company meeting to improve the incident handling capability. Which step was missed according to the NIST incident handling guide?

- A. Contain the malware
- B. Install IPS software
- C. Determine the escalation path
- D. Perform vulnerability assessment

Answer: D

NEW QUESTION 7

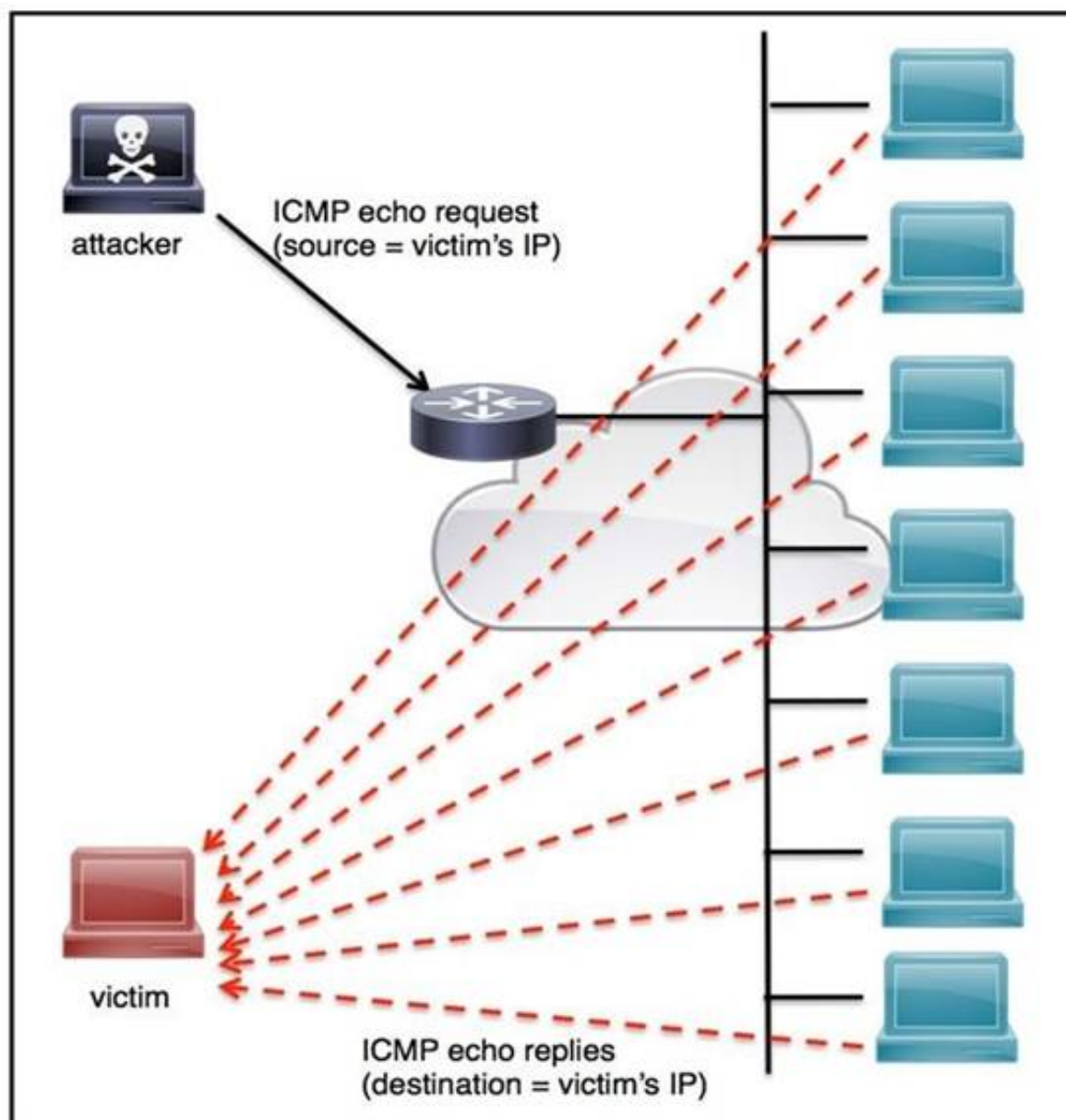
Employees report computer system crashes within the same week. An analyst is investigating one of the computers that crashed and discovers multiple shortcuts in the system's startup folder. It appears that the shortcuts redirect users to malicious URLs. What is the next step the engineer should take to investigate this case?

- A. Remove the shortcut files
- B. Check the audit logs
- C. Identify affected systems
- D. Investigate the malicious URLs

Answer: C

NEW QUESTION 8

Refer to the exhibit.



An engineer must tune the Cisco IOS device to mitigate an attack that is broadcasting a large number of ICMP packets. The attack is sending the victim's spoofed source IP to a network using an IP broadcast address that causes devices in the network to respond back to the source IP address. Which action does the engineer recommend?

- A. Use command `ip verify reverse-path interface`
- B. Use global configuration command `service tcp-keepalives-out`
- C. Use subinterface command `no ip directed-broadcast`
- D. Use logging trap 6

Answer: A

NEW QUESTION 9

How does Wireshark decrypt TLS network traffic?

- A. with a key log file using per-session secrets
- B. using an RSA public key
- C. by observing DH key exchange
- D. by defining a user-specified decode-as

Answer: A

NEW QUESTION 10

Drag and drop the NIST incident response process steps from the left onto the actions that occur in the steps on the right.

Answer Area

Eradicate	Analyze and document the breach, and strengthen systems against future attacks
Contain	Conduct incident response role training for employees
Post-Incident Handling	Determine where the breach started and prevent the attack from spreading
Recover	Determine how the breach was discovered and the areas that were impacted
Analyze	Eliminate the root cause of the breach and apply updates to the system
Prepare	Get systems and business operations up and running, and ensure that the same type of attack does not occur again

- A. Mastered
 B. Not Mastered

Answer: A

Explanation:

Answer Area

Eradicate	Contain
Contain	Prepare
Post-Incident Handling	Recover
Recover	Analyze
Analyze	Eradicate
Prepare	Post-Incident Handling

NEW QUESTION 10

A security architect is working in a processing center and must implement a DLP solution to detect and prevent any type of copy and paste attempts of sensitive data within unapproved applications and removable devices. Which technical architecture must be used?

- A. DLP for data in motion
 B. DLP for removable data
 C. DLP for data in use
 D. DLP for data at rest

Answer: C

NEW QUESTION 12

A company recently completed an internal audit and discovered that there is CSRF vulnerability in 20 of its hosted applications. Based on the audit, which recommendation should an engineer make for patching?

- A. Identify the business applications running on the assets
 B. Update software to patch third-party software
 C. Validate CSRF by executing exploits within Metasploit
 D. Fix applications according to the risk scores

Answer: D

NEW QUESTION 15

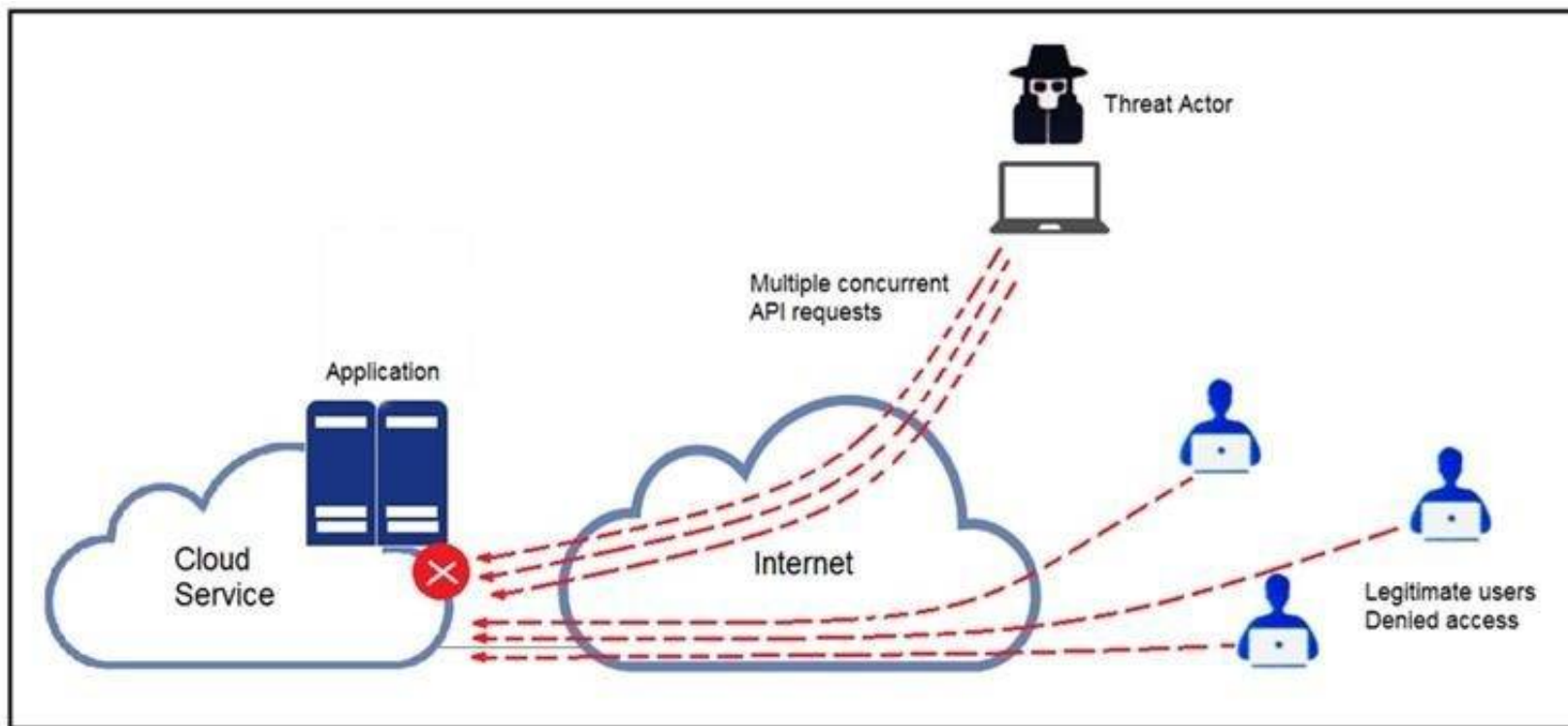
According to GDPR, what should be done with data to ensure its confidentiality, integrity, and availability?

- A. Perform a vulnerability assessment
- B. Conduct a data protection impact assessment
- C. Conduct penetration testing
- D. Perform awareness testing

Answer: B

NEW QUESTION 16

Refer to the exhibit.



A threat actor behind a single computer exploited a cloud-based application by sending multiple concurrent API requests. These requests made the application unresponsive. Which solution protects the application from being overloaded and ensures more equitable application access across the end-user community?

- A. Limit the number of API calls that a single client is allowed to make
- B. Add restrictions on the edge router on how often a single client can access the API
- C. Reduce the amount of data that can be fetched from the total pool of active clients that call the API
- D. Increase the application cache of the total pool of active clients that call the API

Answer: A

NEW QUESTION 17

An organization installed a new application server for IP phones. An automated process fetched user credentials from the Active Directory server, and the application will have access to on-premises and cloud services. Which security threat should be mitigated first?

- A. aligning access control policies
- B. exfiltration during data transfer
- C. attack using default accounts
- D. data exposure from backups

Answer: B

NEW QUESTION 21

An organization had a breach due to a phishing attack. An engineer leads a team through the recovery phase of the incident response process. Which action should be taken during this phase?

- A. Host a discovery meeting and define configuration and policy updates
- B. Update the IDS/IPS signatures and reimage the affected hosts
- C. Identify the systems that have been affected and tools used to detect the attack
- D. Identify the traffic with data capture using Wireshark and review email filters

Answer: C

NEW QUESTION 26

A new malware variant is discovered hidden in pirated software that is distributed on the Internet. Executives have asked for an organizational risk assessment. The security officer is given a list of all assets. According to NIST, which two elements are missing to calculate the risk assessment? (Choose two.)

- A. incident response playbooks
- B. asset vulnerability assessment
- C. report of staff members with asset relations
- D. key assets and executives
- E. malware analysis report

Answer: BE

NEW QUESTION 31

An engineer is going through vulnerability triage with company management because of a recent malware outbreak from which 21 affected assets need to be patched or remediated. Management decides not to prioritize fixing the assets and accepts the vulnerabilities. What is the next step the engineer should take?

- A. Investigate the vulnerability to prevent further spread
- B. Acknowledge the vulnerabilities and document the risk
- C. Apply vendor patches or available hot fixes
- D. Isolate the assets affected in a separate network

Answer: D

NEW QUESTION 34

Drag and drop the cloud computing service descriptions from the left onto the cloud service categories on the right.

Answer Area

triggers a block of code when triggered by a specific event	SaaS
allows renting full servers or virtual machines	PaaS
focuses on developing, testing, and delivering applications	IaaS
allows hosting and managing a virtual environment	FaaS

- A. Mastered
- B. Not Mastered

Answer: A

Explanation:

Answer Area

triggers a block of code when triggered by a specific event	focuses on developing, testing, and delivering applications
allows renting full servers or virtual machines	allows hosting and managing a virtual environment
focuses on developing, testing, and delivering applications	allows renting full servers or virtual machines
allows hosting and managing a virtual environment	triggers a block of code when triggered by a specific event

NEW QUESTION 35

An organization lost connectivity to critical servers, and users cannot access business applications and internal websites. An engineer checks the network devices to investigate the outage and determines that all devices are functioning. Drag and drop the steps from the left into the sequence on the right to continue investigating this issue. Not all options are used.

Answer Area

run show access-list	Step 1
run show config	Step 2
validate the file MD5	Step 3
generate the core file	Step 4
verify the image file hash	
check the memory logs	
verify the memory state	

- A. Mastered
- B. Not Mastered

Answer: A

Explanation:

Answer Area

run show access-list	run show config
run show config	check the memory logs
validate the file MD5	verify the memory state
generate the core file	run show access-list
verify the image file hash	
check the memory logs	
verify the memory state	

NEW QUESTION 38

An engineer returned to work and realized that payments that were received over the weekend were sent to the wrong recipient. The engineer discovered that the SaaS tool that processes these payments was down over the weekend. Which step should the engineer take first?

- A. Utilize the SaaS tool team to gather more information on the potential breach
- B. Contact the incident response team to inform them of a potential breach
- C. Organize a meeting to discuss the services that may be affected
- D. Request that the purchasing department creates and sends the payments manually

Answer: A

NEW QUESTION 41

An organization had several cyberattacks over the last 6 months and has tasked an engineer with looking for patterns or trends that will help the organization anticipate future attacks and mitigate them. Which data analytic technique should the engineer use to accomplish this task?

- A. diagnostic

- B. qualitative
- C. predictive
- D. statistical

Answer: C

NEW QUESTION 44

A SOC analyst is notified by the network monitoring tool that there are unusual types of internal traffic on IP subnet 103.861.2117.0/24. The analyst discovers unexplained encrypted data files on a computer system that belongs on that specific subnet. What is the cause of the issue?

- A. DDoS attack
- B. phishing attack
- C. virus outbreak
- D. malware outbreak

Answer: D

NEW QUESTION 45

An employee abused PowerShell commands and script interpreters, which lead to an indicator of compromise (IOC) trigger. The IOC event shows that a known malicious file has been executed, and there is an increased likelihood of a breach. Which indicator generated this IOC event?

- A. ExecutedMalware.ioc
- B. Crossrider.ioc
- C. ConnectToSuspiciousDomain.ioc
- D. W32 AccesschkUtility.ioc

Answer: D

NEW QUESTION 47

An audit is assessing a small business that is selling automotive parts and diagnostic services. Due to increased customer demands, the company recently started to accept credit card payments and acquired a POS terminal. Which compliance regulations must the audit apply to the company?

- A. HIPAA
- B. FISMA
- C. COBIT
- D. PCI DSS

Answer: D

NEW QUESTION 49

Refer to the exhibit.

Max (K)	Retain	OverflowAction	Entries	Log
-----	-----	-----	-----	---
15,168	0	OverwriteAsNeeded	20,792	Application
15,168	0	OverwriteAsNeeded	12,559	System
15,360	0	OverwriteAsNeeded	11,173	Windows PowerShell

An employee is a victim of a social engineering phone call and installs remote access software to allow an “MS Support” technician to check his machine for malware. The employee becomes suspicious after the remote technician requests payment in the form of gift cards. The employee has copies of multiple, unencrypted database files, over 400 MB each, on his system and is worried that the scammer copied the files off but has no proof of it. The remote technician was connected sometime between 2:00 pm and 3:00 pm over https. What should be determined regarding data loss between the employee’s laptop and the remote technician’s system?

- A. No database files were disclosed
- B. The database files were disclosed
- C. The database files integrity was violated
- D. The database files were intentionally corrupted, and encryption is possible

Answer: C

NEW QUESTION 50

A customer is using a central device to manage network devices over SNMPv2. A remote attacker caused a denial of service condition and can trigger this vulnerability by issuing a GET request for the ciscoFlashMIB OID on an affected device. Which should be disabled to resolve the issue?

- A. SNMPv2
- B. TCP small services
- C. port UDP 161 and 162
- D. UDP small services

Answer: A

NEW QUESTION 55

Refer to the exhibit.

```
#!/usr/bin/env python3

import re

def (username, minlen):
    if type(username) != str:
        raise TypeError
    if minlen < 3:
        raise ValueError
    if len(username) < minlen:
        return False
    if not re.match('[a-z0-9._]*$', username):
        return False
    if username[0].isnumeric():
        return False
    return True
```

An organization is using an internal application for printing documents that requires a separate registration on the website. The application allows format-free user creation, and users must match these required conditions to comply with the company’s user creation policy:

- > minimum length: 3
- > usernames can only use letters, numbers, dots, and underscores
- > usernames cannot begin with a number

The application administrator has to manually change and track these daily to ensure compliance. An engineer is tasked to implement a script to automate the process according to the company user creation policy. The engineer implemented this piece of code within the application, but users are still able to create format-free usernames. Which change is needed to apply the restrictions?

- A. modify code to return error on restrictions def return false_user(username, minlen)
- B. automate the restrictions def automate_user(username, minlen)
- C. validate the restrictions, def validate_user(username, minlen)
- D. modify code to force the restrictions, def force_user(username, minlen)

Answer: B

NEW QUESTION 58

Drag and drop the type of attacks from the left onto the cyber kill chain stages at which the attacks are seen on the right.

Answer Area

not visible to the victim	reconnaissance
virus scanner turning off	weaponization
malware placed on the targeted system	delivery
open port scans and multiple failed logins from the website	exploitation
large amount of data leaving the network through unusual ports	installation
system phones connecting to countries where no staff are located	command & control
USB with infected files inserted into company laptop	actions on objectives

- A. Mastered
- B. Not Mastered

Answer: A

Explanation:

Answer Area

not visible to the victim

virus scanner turning off

malware placed on the targeted system

open port scans and multiple failed logins from the website

large amount of data leaving the network through unusual ports

system phones connecting to countries where no staff are located

USB with infected files inserted into company laptop

system phones connecting to countries where no staff are located

malware placed on the targeted system

not visible to the victim

large amount of data leaving the network through unusual ports

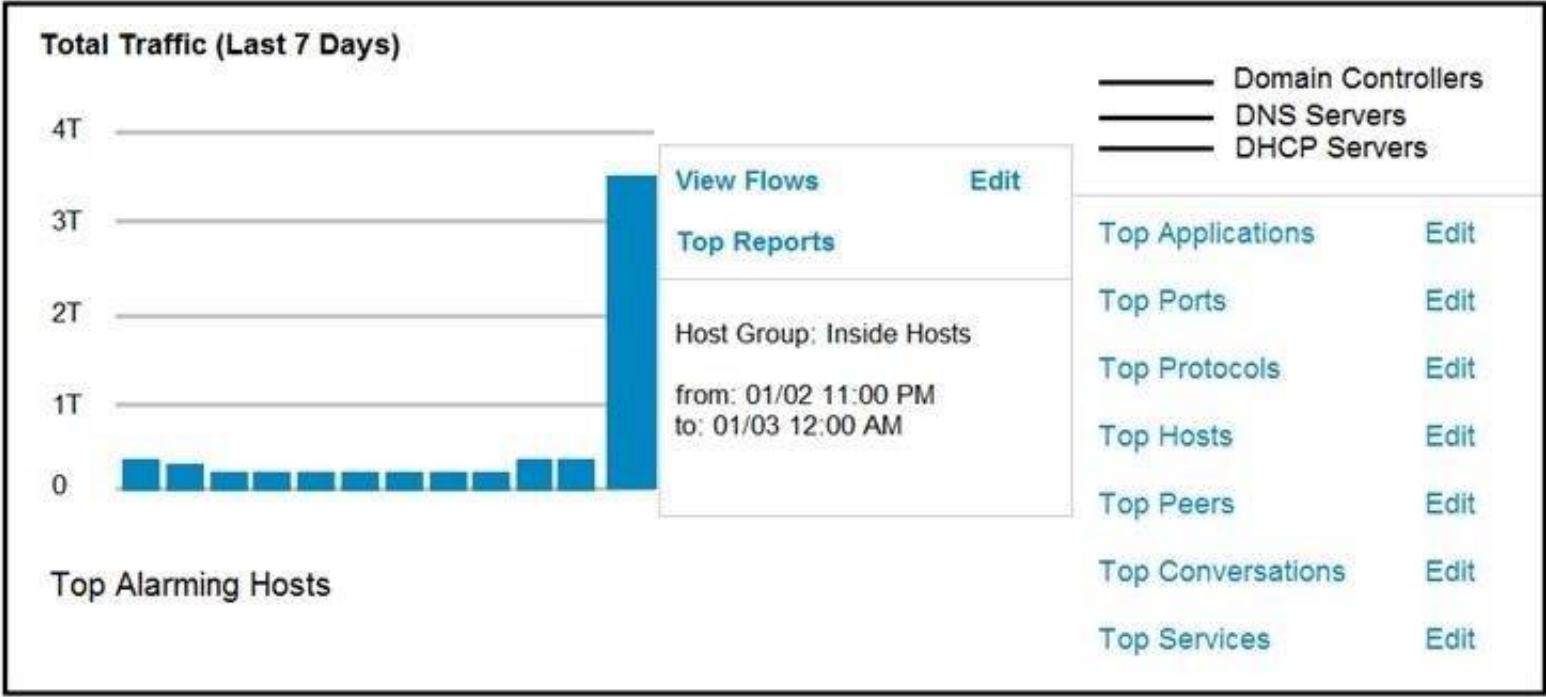
USB with infected files inserted into company laptop

virus scanner turning off

open port scans and multiple failed logins from the website

NEW QUESTION 59

Refer to the exhibit.



An engineer notices a significant anomaly in the traffic in one of the host groups in Cisco Secure Network Analytics (Stealthwatch) and must analyze the top data transmissions. Which tool accomplishes this task?

- A. Top Peers
- B. Top Hosts
- C. Top Conversations
- D. Top Ports

Answer: B

NEW QUESTION 62

Where do threat intelligence tools search for data to identify potential malicious IP addresses, domain names, and URLs?

- A. customer data
- B. internal database
- C. internal cloud
- D. Internet

Answer: D

NEW QUESTION 65

Drag and drop the components from the left onto the phases of the CI/CD pipeline on the right.


```
graph TD; A[build] --> B[release]; B --> C[deploy]; C --> D[operate]; D --> E[monitor]; E --> F[test]; F --> G[plan]; G --> H[develop];
```

build

release

deploy

operate

monitor

test

plan

develop

- ## Phase 8

A. Mastered
B. Not Mastered

Answer: A

Explanation:

```
graph TD; build --> release; release --> deploy; deploy --> operate; operate --> monitor; monitor --> test; test --> plan; plan --> develop; develop --> build;
```

build

release

deploy

operate

monitor

test

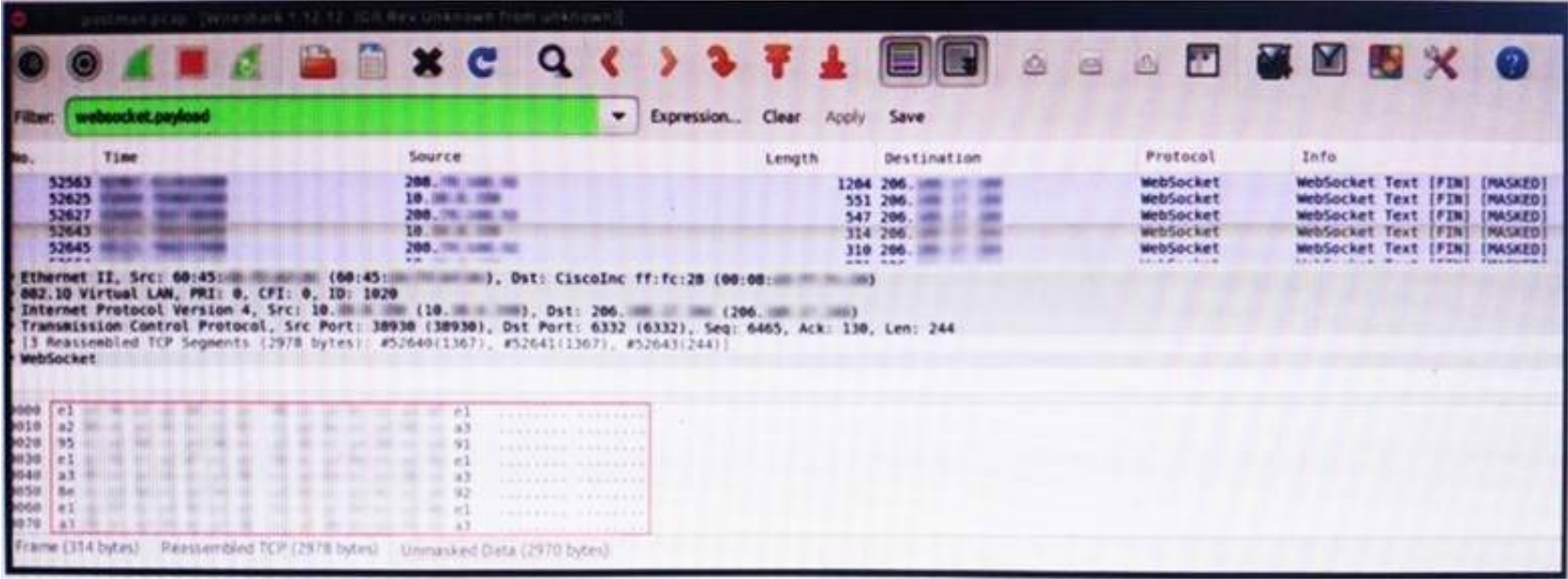
plan

develop

- monitor

NEW QUESTION 69

Refer to the exhibit.



An engineer is analyzing this Vlan0386-int12-117.pcap file in Wireshark after detecting a suspicious network activity. The origin header for the direct IP connections in the packets was initiated by a google chrome extension on a WebSocket protocol. The engineer checked message payloads to determine what information was being sent off-site but the payloads are obfuscated and unreadable. What does this STIX indicate?

- A. The extension is not performing as intended because of restrictions since ports 80 and 443 should be accessible
- B. The traffic is legitimate as the google chrome extension is reaching out to check for updates and fetches this information
- C. There is a possible data leak because payloads should be encoded as UTF-8 text
- D. There is a malware that is communicating via encrypted channels to the command and control server

Answer: C

NEW QUESTION 71

Refer to the exhibit.

No.	Time	Source	Destination	Protocol	Length	Info
2389	848.622259	10.31.133.235	10.25.129.5	TCP	66	61118 → 80 [SYN] Seq=0 Win=8192
2389	848.622273	10.25.129.5	10.31.133.235	TCP	66	80 → 61118 [SYN, ACK] Seq=0 Acc=
2389	848.622351	10.31.133.235	10.25.129.5	TCP	60	30745 → 80 [RST] Seq=1 Win=0 Len=0
2389	848.622719	10.31.133.235	10.25.129.5	TCP	60	30746 → 80 [RST] Seq=1 Win=0 Len=0
2389	848.622889	10.31.133.235	10.25.129.5	TCP	60	30748 → 80 [RST] Seq=1 Win=0 Len=0
2389	848.623250	10.31.133.235	10.25.129.5	TCP	60	30747 → 80 [RST] Seq=1 Win=0 Len=0
2389	848.623545	10.31.133.235	10.25.129.5	TCP	60	30749 → 80 [RST] Seq=1 Win=0 Len=0
2389	848.623882	10.31.133.235	10.25.129.5	TCP	60	30750 → 80 [RST] Seq=1 Win=0 Len=0
2389	848.624295	10.31.133.235	10.25.129.5	TCP	60	30751 → 80 [RST] Seq=1 Win=0 Len=0
2389	848.624880	10.31.133.235	10.25.129.5	TCP	60	30752 → 80 [RST] Seq=1 Win=0 Len=0
2389	848.625424	10.31.133.235	10.25.129.5	TCP	60	30753 → 80 [RST] Seq=1 Win=0 Len=0
2389	848.625729	10.31.133.235	10.25.129.5	TCP	60	30754 → 80 [RST] Seq=1 Win=0 Len=0
2389	848.626842	10.31.133.235	10.25.129.5	TCP	60	30755 → 80 [RST] Seq=1 Win=0 Len=0
2389	848.627352	10.31.133.235	10.25.129.5	TCP	60	30756 → 80 [RST] Seq=1 Win=0 Len=0

What is occurring in this packet capture?

- A. TCP port scan
- B. TCP flood
- C. DNS flood
- D. DNS tunneling

Answer: B

NEW QUESTION 76

A threat actor attacked an organization's Active Directory server from a remote location, and in a thirty-minute timeframe, stole the password for the administrator account and attempted to access 3 company servers. The threat actor successfully accessed the first server that contained sales data, but no files were downloaded. A second server was also accessed that contained marketing information and 11 files were downloaded. When the threat actor accessed the third server that contained corporate financial data, the session was disconnected, and the administrator's account was disabled. Which activity triggered the behavior analytics tool?

- A. accessing the Active Directory server
- B. accessing the server with financial data
- C. accessing multiple servers
- D. downloading more than 10 files

Answer: C

NEW QUESTION 80

A security expert is investigating a breach that resulted in a \$32 million loss from customer accounts. Hackers were able to steal API keys and two-factor codes due to a vulnerability that was introduced in a new code a few weeks before the attack. Which step was missed that would have prevented this breach?

- A. use of the Nmap tool to identify the vulnerability when the new code was deployed
- B. implementation of a firewall and intrusion detection system
- C. implementation of an endpoint protection system
- D. use of SecDevOps to detect the vulnerability during development

Answer: D

NEW QUESTION 85

Refer to the exhibit.

```
pragma: no-cache
server: Apache
status: 200
strict-transport-security: max-age=31536000
vary: Accept-Encoding
x-content-type-options: nosniff
x-frame-options: SAMEORIGIN
x-test-debug: nURL=www.cisco.com, realm=0, isRealm=0, realmDomain=0, shortrealm=0
x-xss-protection: 1; mode=block
```


Where does it signify that a page will be stopped from loading when a scripting attack is detected?

- A. x-frame-options
- B. x-content-type-options
- C. x-xss-protection
- D. x-test-debug

Answer: C

NEW QUESTION 86

An engineer wants to review the packet overviews of SNORT alerts. When printing the SNORT alerts, all the packet headers are included, and the file is too large to utilize. Which action is needed to correct this problem?

- A. Modify the alert rule to "output alert_syslog: output log"
- B. Modify the output module rule to "output alert_quick: output filename"
- C. Modify the alert rule to "output alert_syslog: output header"
- D. Modify the output module rule to "output alert_fast: output filename"

Answer: A

NEW QUESTION 91

A SOC team is informed that a UK-based user will be traveling between three countries over the next 60 days. Having the names of the 3 destination countries and the user's working hours, what must the analyst do next to detect an abnormal behavior?

- A. Create a rule triggered by 3 failed VPN connection attempts in an 8-hour period
- B. Create a rule triggered by 1 successful VPN connection from any nondestination country
- C. Create a rule triggered by multiple successful VPN connections from the destination countries
- D. Analyze the logs from all countries related to this user during the traveling period

Answer: D

NEW QUESTION 96

Refer to the exhibit.

Asset	Threat	Vulnerability	Likelihood (1-10)	Impact (1-10)
Servers	Natural Disasters – Flooding	Server Room is on the zero floor	3	10
Secretary Workstation	Usage of illegitimate software	Inadequate control of software	7	6
Payment Process	Eavesdropping, Misrouting/re-routing of messages	Unencrypted communications	5	10
Website	Website Intrusion	No IDS/IPS usage	6	8

Which asset has the highest risk value?

- A. servers
- B. website
- C. payment process
- D. secretary workstation

Answer: C

NEW QUESTION 97

.....

Thank You for Trying Our Product

We offer two products:

1st - We have Practice Tests Software with Actual Exam Questions

2nd - Questions and Answers in PDF Format

350-201 Practice Exam Features:

- * 350-201 Questions and Answers Updated Frequently
- * 350-201 Practice Questions Verified by Expert Senior Certified Staff
- * 350-201 Most Realistic Questions that Guarantee you a Pass on Your First Try
- * 350-201 Practice Test Questions in Multiple Choice Formats and Updates for 1 Year

100% Actual & Verified — Instant Download, Please Click
[Order The 350-201 Practice Test Here](#)