



Microsoft

Exam Questions mb-300

Microsoft Dynamics 365 Unified Operations Core

NEW QUESTION 1

- (Exam Topic 1)
You need to configure the system for account representatives.
Which two actions should you perform? Each correct answer presents a partial solution.
NOTE: Each correct selection is worth one point.

- A. Recreate the job alert as a change-based alert.
- B. Enable change-based alerts.
- C. Increase the batch job running frequency.
- D. Specify the batch server for the alert notifications job.

Answer: AB

NEW QUESTION 2

- (Exam Topic 1)
You need to configure check printing for Munson's.
Which four actions should you perform in sequence? To answer, move the appropriate actions from the list of actions to the answer area and arrange them in the correct order.

Actions

Install the Document Routing Agent on the client machines where users will be printing the checks.

Navigate to the legal entity and enable the printer.

Select the legal entities for the printer to be available.

Discover and add the check printer from the Document Routing Agent.

Enter the Dynamics 365 Finance and Operations configurations in the Document Routing Agent.

Discover and add the check printer to the system from Dynamics 365 Finance and Operations.

Install the Document Routing Agent on the corporate print server.

Register the Document Routing Agent with Dynamics 365 Finance and Operations.

Answer Area

- A. Mastered
- B. Not Mastered

Answer: A

Explanation:
Reference:
<https://docs.microsoft.com/en-us/dynamics365/unified-operations/dev-itpro/analytics/install-document-routing-a>

NEW QUESTION 3

- (Exam Topic 1)
You need to connect the Excel instance to the Relecloud production instance. What should you do?

- A. Set the server URL to Microsoft.Dynamics.Platform.Integration.Office.UrlViewerApplet.
- B. Set the server URL to <https://relecloud-prod.operations.dynamics.com>.
- C. Set the App Correlation ID to <https://relecloud-prod.operations.dynamics.com>.
- D. Set the App Correlation ID to the App Id in the Dynamics 365 Office App Parameters.

Answer: B

Explanation:
Reference:
<https://docs.microsoft.com/en-us/dynamics365/unified-operations/dev-itpro/office-integration/use-excel-add-in>

Your Partner of IT Exam

visit - <https://www.examible.com>

NEW QUESTION 4

- (Exam Topic 1)

You need to determine why the sales associate is not able to see Munson's in the search results. What is the cause of the issue?

- A. The search criteria is searching for only names that are exactly 'pickles'.
- B. The search criteria is only able to search by the shortened search name of the customer.
- C. The search criteria is searching for all customer names that start with 'pickles'.
- D. The search criteria is case sensitive.

Answer: C

Explanation:

Reference:

<https://docs.microsoft.com/en-us/dynamics365/customer-engagement/basics/search-records>

NEW QUESTION 5

- (Exam Topic 2)

You plan the migration from Dynamics AX 2012 R3 to a Dynamics 365 for Finance and Operations environment. You will be using Lifecycle Services (LCS) and the tools provided with it.

You need to clean up data, review and configure SQL optimizations, and identify deprecated features in your code. What tool should you use?

- A. Microsoft Azure DevOps
- B. Upgrade analyzer
- C. Data Import/Export Framework (DIXF)
- D. Code upgrade estimation tools

Answer: B

NEW QUESTION 6

- (Exam Topic 2)

You are a Dynamics 365 for Finance and Operations system administrator.

You use Lifecycle Services (LCS) for your deployment. The company currently has multiple methodologies assigned to various projects. One methodology is incorrectly assigned and must be changed.

You need to change the methodology on an existing project.

Which two options can you use? Each correct answer presents a complete solution. NOTE: Each correct selection is worth one point.

- A. Change methodology
- B. Project settings
- C. Manage methodologies
- D. Edit methodology

Answer: AC

NEW QUESTION 7





- (Exam Topic 2)

You are the project owner in a Lifecycle Services (LCS) project to deploy a Dynamics 365 for Finance and Operations environment.

The system must be configured to enable testers to record processes that become business processes and test plans.

You need to configure the system to generate User Acceptance Testing (UAT) test plans.

In which order should you perform the actions? To answer, move all actions from the list of actions to the answer area and arrange them in the correct order.



Actions		Answer Area
Create business process libraries in the LCS project.		
Enable Azure DevOps sync.	 	 
Configure Azure DevOps for the LCS project.		
Configure system administrator help parameters to the LCS project.		
Enable Sync test cases.		

- A. Mastered
- B. Not Mastered

Answer: A

Explanation:

Actions	Answer Area
Create business process libraries in the LCS project.	Create business process libraries in the LCS project.
Enable Azure DevOps sync.	Configure Azure DevOps for the LCS project.
Configure Azure DevOps for the LCS project.	Configure system administrator help parameters to the LCS project.
Configure system administrator help parameters to the LCS project.	Enable Azure DevOps sync.
Enable Sync test cases.	Enable Sync test cases.

NEW QUESTION 8

- (Exam Topic 2)

You are a Dynamics 365 for Finance and Operations system administrator. You have production and testing environments. You move the workflow from the testing environment to the production environment.

The workflow in the production environment is stuck in a wait state.

You need to resolve the issue with the workflow in the production environment. What should you do?

- A. Set the workflow batch job to critical
- B. Set the workflow messaging batch job group
- C. Grant the user workflow permissions
- D. Set the workflow execution account in the workflow parameters

Answer: D

NEW QUESTION 9

- (Exam Topic 2)

A company implements Dynamics 365 for Finance and Operations.

They need additional information and want a subledger to record information for additional reporting rather than customizing all reports.

You need to set up the posting to accommodate the need for a subledger. Which three actions should you take? Each answer presents part of the solution.

- A. Update existing reports to prevent data in the identified area from reporting
- B. Create posting profiles to post to the identified area as needed for the request
- C. Create posting definitions to post to the identified area as needed for the request
- D. Update existing reports to add data in the identified area
- E. Identify an area of the chart of accounts to record to as the subledger

Answer: BDE

NEW QUESTION 10

- (Exam Topic 2)

Note: This question is part of a series of questions that present the same scenario. Each question in the series contains a unique solution that might meet the stated goals. Some question sets might have more than one correct solution, while others might not have a correct solution.

After you answer a question in this section, you will NOT be able to return to it. As a result, these questions will not appear in the review screen.

You are a Dynamics 365 for Finance and Operations system administrator. You have a test environment that is used by several people at any given time.

You create a new data entity in your development and migrate the code to the test environment. In the test environment, you are unable to find the data entity in the list.

You need to locate the data entity.

Solution: Restart the Application Object Server (AOS) of the test environment. Does the solution meet the goal?

- A. Yes
- B. No

Answer: B

NEW QUESTION 10

- (Exam Topic 2)

You are a Dynamics 365 for Finance and Operations system administrator.

A company named Contoso Ltd. is creating a new legal entity that will be similar to an existing legal entity. Team members copy key entities to the new legal entity using the Data management workspace. They indicate that there were already-configured pieces of data unique to the new legal entity before they ran the Copy into legal entity process.

The data import/export framework settings are listed in the table below:

Setting	Current value
Ignore error	Yes
Create error file	Yes
Remove duplicates	Yes

You need to determine what happened to the already-configured pieces of data. What happened to the data?

- A. Any source legal entity data that already exists in the destination legal entity will be updated.
- B. Any destination legal entity data will be deleted, and the source data will be inserted.
- C. Any source legal entity data that already exists in the destination legal entity will be ignored.
- D. Any source legal entity data that already exists in the destination legal entity will be displayed as an error for user action in the Data management workspace.

Answer: C

NEW QUESTION 12

- (Exam Topic 2)

A company implements Dynamics 365 for Finance and Operations.

You have a requirement that the component data for address structure in the system be available in Portuguese (Brazil).

You need to provide address and contact information purpose with translation. What should you do?

- A. Under Organization administration, on the Global addresses tab, enter the appropriate translation value in the translations form
- B. In User options, set the language preference to Portuguese pt-BR and enter addresses for customers and vendors
- C. Upload files to Dynamics 365 Translation Services (DTS) for conversion
- D. Apply return from Dynamics 365 Translation Services (DTS) to the system by submitting a support ticket

Answer: A

NEW QUESTION 17

- (Exam Topic 2)

A company plans to use Dynamics 365 for Finance and Operations. You need to implement the security architecture.

Which component should you use for each requirement? To answer, select the appropriate security component in the answer area.

NOTE: Each correct selection is worth one point.

Answer Area

Requirement	Security component
Group the security configuration for employees with the same job function.	<div>Security roles</div> <div>Duties</div> <div>Privileges</div> <div>Permissions</div>
Assign check-depositing tasks to a group of people as part of the accounts receivable process.	<div>Security roles</div> <div>Duties</div> <div>Privileges</div> <div>Permissions</div>
Restrict access to a specific table or chart.	<div>Security roles</div> <div>Duties</div> <div>Privileges</div> <div>Permissions</div>

- A. Mastered
- B. Not Mastered

Answer: A

Explanation:

Answer Area

Requirement	Security component
Group the security configuration for employees with the same job function.	<div>Security roles</div> <div>Duties</div> <div>Privileges</div> <div>Permissions</div>
Assign check-depositing tasks to a group of people as part of the accounts receivable process.	<div>Security roles</div> <div>Duties</div> <div>Privileges</div> <div>Permissions</div>
Restrict access to a specific table or chart.	<div>Security roles</div> <div>Duties</div> <div>Privileges</div> <div>Permissions</div>

NEW QUESTION 18

- (Exam Topic 2)

A company plans to use record templates in its implementation. You need to set up and use record templates.

Which three actions should you perform in sequence to create the record templates? To answer, move the appropriate actions from the list of actions to the answer area and arrange them in the correct order.

Actions

Answer Area

Use the Record info feature

Create a user template

Create a company accounts template

Change the Record view property

Identify the templatized record



- A. Mastered
- B. Not Mastered

Answer: A

Explanation:

References:

<https://docs.microsoft.com/en-us/dynamics365/unified-operations/dev-itpro/data-entities/tasks/create-record-tem>

NEW QUESTION 22

- (Exam Topic 2)

Note: This question is part of a series of questions that present the same scenario. Each question in the series contains a unique solution that might meet the stated goals. Some question sets might have more than one correct solution, while others might not have a correct solution.

After you answer a question in this section, you will NOT be able to return to it. As a result, these questions will not appear in the review screen.

You are a functional consultant who is deploying Dynamics 365 for Finance and Operations. The implementation must:

- ☐ Use an iterative approach
- ☐ Integrate with real-world data
- ☐ Enforce standards and governance
- ☐ Implement multiple rounds of feedback

You need to deploy and validate the implementation.

Solution: Deploy the out-of-the-box solution. Enable users to customize the solution based on individual user scenarios.

Does the solution meet the goal?

- A. Yes
- B. No

Answer: B

NEW QUESTION 25

- (Exam Topic 2)

You are responsible for regulatory compliance for a Dynamics 365 for Finance and Operations environment. You need to be able to search for the regulatory features of Dynamics 365 for Finance and Operations.

What should you use?

- A. Intelligent Data Management Framework (IDMF)
- B. System diagnostics
- C. Application Object Tree (AOT)
- D. Issue search

Answer: D

Explanation:

References:

<https://docs.microsoft.com/en-us/dynamics365/unified-operations/dev-itpro/lifecycle-services/issue-search-lcs>

NEW QUESTION 28

- (Exam Topic 2)

An organization implements Dynamics 365 for Finance and Operations.

You need to determine where work items originate.

From which module do the following work items originate? To answer, drag the appropriate modules to the correct work items. Each module may be used once, more than once, or not at all. You may need to drag the split bar between panes or scroll to view content.

NOTE: Each correct selection is worth one point.

Modules

Accounts payable

Accounts receivable

Inventory management

Credit and collections

Answer Area

Work item

Purchase order

Invoice

Vendor invoice

Transfer order

Module

Module

Module

Module

- A. Mastered
- B. Not Mastered

Answer: A

Explanation:

Modules

Accounts payable

Accounts receivable

Inventory management

Credit and collections

Answer Area

Work item

Purchase order

Invoice

Vendor invoice

Transfer order

Module

Accounts payable

Accounts receivable

Accounts payable

Inventory management

NEW QUESTION 30

- (Exam Topic 2)

A multinational company plans to implement centralized procurement using purchase requisition workflows. Multiple workflows must be of the same type. Each region must use its own purchase requisition workflow. You need to implement the workflows. What should you do?

- A. Configure Instructions for users
- B. Configure the workflow owner
- C. Configure automated tasks
- D. Configure manual tasks
- E. Add a condition for running the workflow

Answer: E

NEW QUESTION 34

- (Exam Topic 2)

You are a Dynamics 365 for Finance and Operations system administrator for a new implementation. You have a solution that needs to be tested using User Acceptance Testing (UAT). You have created a Business process modeler (BPM) library. You need to validate and support the solution. Which three actions should you perform? Each answer presents part of the solution.

- A. Upload the saved recording to BPM.
- B. Create a new Business process library
- C. Export the task recording to Microsoft Word and upload it to BPM.
- D. Record test cases and save them to BPM.
- E. Create and save a new task recording.

Answer: ABD

NEW QUESTION 36

- (Exam Topic 2)

You are responsible for automation efforts in a Dynamics 365 for Finance and Operations environment. You are running into performance issues on a specific Application Object Server (AOS) that is over-used. You need to alter your batch processing of high-demand items to have affinity to a new AOS server. What batch processing component should you change?

- A. Batch task
- B. Batch group
- C. Batch periods
- D. Batch job

Answer: A

NEW QUESTION 37

- (Exam Topic 2)

A company implements Dynamics 365 for Finance and Operations. It must set up the system to be ready for entering inventory items. You need to select which unit of conversion fits the scenario.

Which conversion types should you use? To answer, select the appropriate options in the answer area. NOTE: Each correct selection is worth one point.

Answer Area

Scenario	Conversion type
Car paint colors and their ingredients are purchased in barrels, stocked in ounces, and sold in gallons.	<div>Standard</div> <div>Intra-class</div> <div>Inter-class</div>
Steel is purchased in tons, stocked in pounds, and sold in linear feet.	<div>Standard</div> <div>Intra-class</div> <div>Inter-class</div>
Bolts and nuts are purchased in pounds, stocked as individual units, and sold in boxes.	<div>Standard</div> <div>Intra-class</div> <div>Inter-class</div>

- A. Mastered
- B. Not Mastered

Answer: A

Explanation:

Answer Area

Scenario	Conversion type
Car paint colors and their ingredients are purchased in barrels, stocked in ounces, and sold in gallons.	<div>Standard</div> <div>Intra-class</div> <div>Inter-class</div>
Steel is purchased in tons, stocked in pounds, and sold in linear feet.	<div>Standard</div> <div>Intra-class</div> <div>Inter-class</div>
Bolts and nuts are purchased in pounds, stocked as individual units, and sold in boxes.	<div>Standard</div> <div>Intra-class</div> <div>Inter-class</div>

NEW QUESTION 42

- (Exam Topic 2)

You are configuring the address books for a company's accounts receivable, accounts payable, and retail operations.

You need to configure the appropriate address books to meet various requirements.

Which address book should you use for each scenario? To answer, drag the appropriate address book objects to the correct scenarios. Each address book object may be used once, more than once, or not at all. You may need to drag the spit bar between panes or scroll to view content.

NOTE: Each correct selection is worth one point.

Address Book Object	Answer Area	Address Book Object
<div>employee</div>	<div>Scenario</div>	
<div>global</div>	Restrict account visibility for a given retail channel transaction.	<div>Address Book Object</div>
<div>customer</div>	Create an address for a vendor.	<div>Address Book Object</div>
<div>contact</div>	Link workers to retail locations.	<div>Address Book Object</div>
	Create an address for a prospect.	<div>Address Book Object</div>

- A. Mastered
- B. Not Mastered

Answer: A

Explanation:

Address Book Object	Scenario	Address Book Object
employee	Restrict account visibility for a given retail channel transaction. Create an address for a vendor. Link workers to retail locations. Create an address for a prospect.	customer
global		global
customer		employee
contact		contact

NEW QUESTION 47

- (Exam Topic 2)

A company implements Dynamics 365 for Finance and Operations.

You are responsible for creating a custom feature within a solution by using Microsoft Azure DevOps. Testers have found a bug while running one of the User Acceptance Testing (UAT) scripts. However, it is not a high-severity bug and has been found to not have interconnected dependencies to other branches within the process flow.

You need to deploy the passed functionality features. What should you do?

- A. Exclude the specific package from the Business process modeler (BPM).
- B. Exclude the specific package from the data package in the Data management tool.
- C. Exclude the specific package from the deployable package in Microsoft Azure DevOps.
- D. Exclude the specific package from the deployable package in Configuration data manager.

Answer: C

NEW QUESTION 50

- (Exam Topic 2)

Note: This question is part of a series of questions that present the same scenario. Each question in the series contains a unique solution that might meet the stated goals. Some question sets might have more than one correct solution, while others might not have a correct solution.

After you answer a question in this section, you will NOT be able to return to it. As a result, these questions will not appear in the review screen.

You are configuring a Dynamics 365 for Finance and Operations environment. You must set up Microsoft Excel data exports.

You need to verify that the solution will result in a successful export of data to Excel.

Solution: Use Workbook Designer to build an editable custom export of customer data that includes only postal code, city, and state.

Does the solution meet the goal?

- A. Yes
- B. No

Answer: A

NEW QUESTION 51

- (Exam Topic 2)

Note: This question is part of a series of questions that present the same scenario. Each question in the series contains a unique solution that might meet the stated goals. Some question sets might have more than one correct solution, while others might not have a correct solution.

After you answer a question in this section, you will NOT be able to return to it. As a result, these questions will not appear in the review screen.

You are a functional consultant who is deploying Dynamics 365 for Finance and Operations. The implementation must:

- ▶ Use an iterative approach
- ▶ Integrate with real-world data
- ▶ Enforce standards and governance
- ▶ Implement multiple rounds of feedback

You need to deploy and validate the implementation.

Solution: Perform a fit-gap analysis. Configure Dynamics 365 for Finance and Operations to address the functional gap. Deploy the configuration.

Does the solution meet the goal?

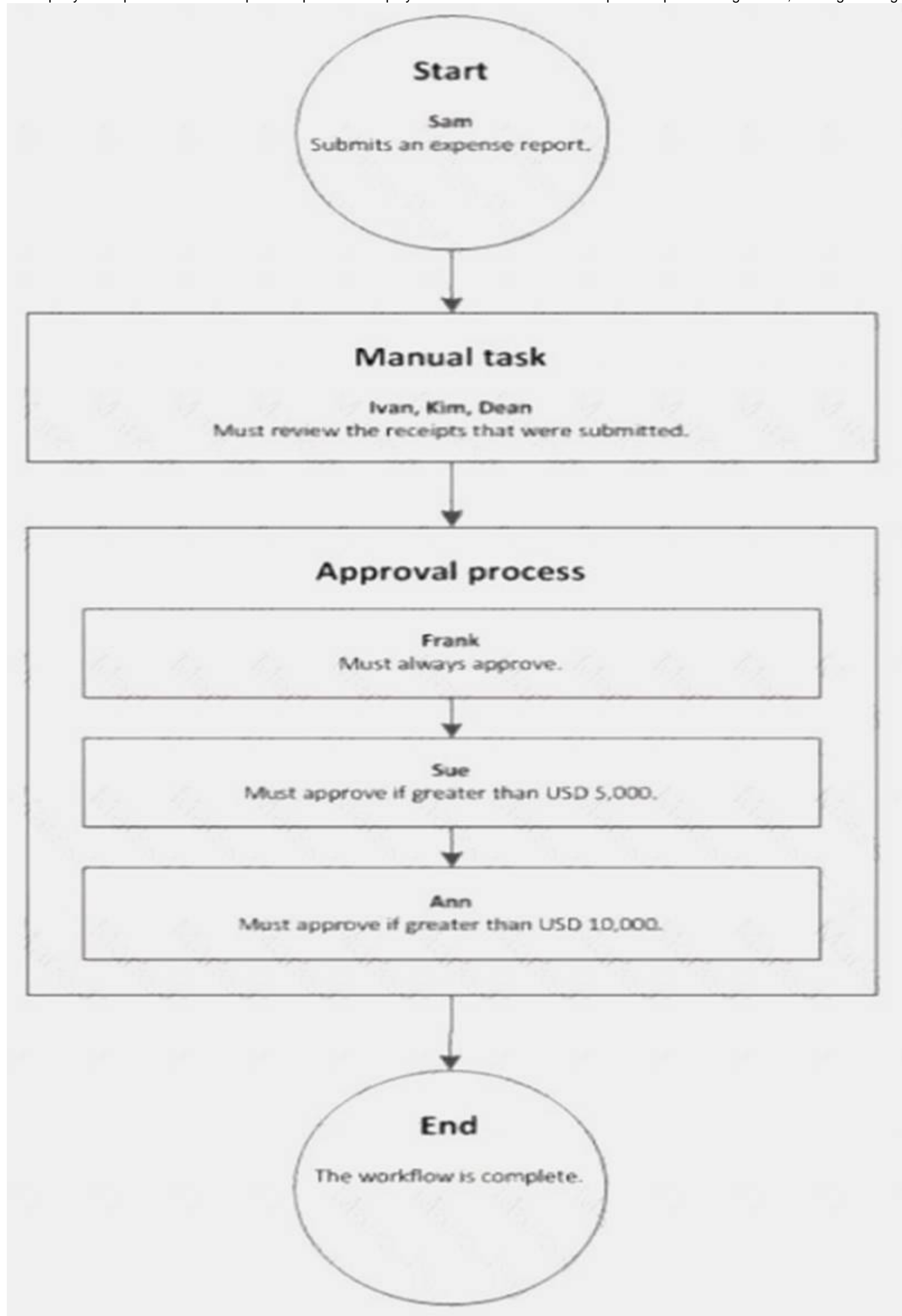
- A. Yes
- B. No

Answer: A

NEW QUESTION 52

- (Exam Topic 2)

A company sets up a workflow for expense reports. An employee named Sam submits an expense report totaling USD 7,000 to go through the workflow.



Use the drop-down menus to select the answer choice that answers each question based on the information presented in the graphic.

NOTE: Each correct selection is worth one point.

Answer Area	
Questions	Answer choice
What statement about the workflow is correct?	<div>Ann can reject the expense report.</div> <div>Ivan, Kim, and Dean must all complete the manual task.</div> <div>The workflow ends after Sue approves the expense report.</div> <div>The expense report will go through Frank, Sue, and Ann for approval.</div>
What type of workflow is this?	<div>Workflow with roles</div> <div>Workflow with a manual decision</div> <div>Workflow with multiple users in a task</div> <div>Workflow with a line-item workflow element</div>

- A. Mastered
B. Not Mastered

Answer: A

Explanation:

Reference:

<https://docs.microsoft.com/en-us/dynamicsax-2012/appuser-itpro/workflow-with-multiple-users-in-a-task>

NEW QUESTION 57

- (Exam Topic 2)

You are a Dynamics 365 for Finance and Operations system administrator.

A user is reporting an issue with the Sales Order form. The UI for the form is not loading properly, and there are some performance issues. The object was working fine until the most recent update release. The user has personalized this form, is using Microsoft Internet Explorer 11, and no other users are reporting issues. You need to resolve the issue. What should you do?

- A. Switch to Microsoft Edge instead of Internet Explorer 11.
B. Open the form in a new Microsoft Edge InPrivate session.
C. Delete the sales form object in the usage data form.
D. Disable and then re-enable the user.

Answer: A

NEW QUESTION 61

- (Exam Topic 2)

You set up Dynamics 365 for Finance and Operations. Your organization will use email with the application.

You need to ensure that email will be sent using typical secure settings. What setting must be set up as specified?

- A. Specify if SSL is required is selected.
B. Information rights management is enabled.
C. In-place hold and Litigation hold are enabled.
D. In-place eDiscovery is enabled.

Answer: A

NEW QUESTION 64

- (Exam Topic 2)

Your company is using a highly customized version of Dynamics 365 for Finance and Operations. You have identified a new hotfix that will correct several important issues that have caused many user complaints.

You need to determine whether the hotfix will break any customizations.

Which four actions should you perform in sequence? To answer, move the appropriate actions from the list of actions to the answer area and arrange them in the correct order.

Actions

Answer Area

Upload the hotfix to Lifecycle Services

Download the hotfix from Lifecycle Services

Check in the entire hotfix as pending change and schedule and deploy it to the production environment

Build the hotfix in the development environment and accept changes

Install the hotfix in your Microsoft Azure DevOps application development environment in an Active state

Install the hotfix in your Microsoft Azure DevOps application development environment in a Pending state



- A. Mastered
B. Not Mastered

Answer: A

Explanation:

References:

<https://docs.microsoft.com/en-us/dynamics365/unified-operations/dev-itpro/migration-upgrade/install-metadata->

NEW QUESTION 66

- (Exam Topic 2)

Note: This question is part of a series of questions that present the same scenario. Each question in the series contains a unique solution that might meet the stated goals. Some question sets might have more than one correct solution, while others might not have a correct solution.

After you answer a question in this section, you will NOT be able to return to it. As a result, these questions will not appear in the review screen.

You are a Dynamics 365 for Finance and Operations security administrator.

When testing security setups, users report that certain roles are gaining access to sensitive information via a form in the system.

You must investigate which user roles have what visibility and access level to system objects, and then send a report to the implementation team to address security compliance concerns.

You need to report the information from the system. Solution: Generate the User role assignments report. Does the solution meet the goal?

- A. Yes
B. No

Answer: B

NEW QUESTION 70

- (Exam Topic 2)

A company implements Dynamics 365 for Finance and Operations and sets up and configures the system to support its reporting requirements using Microsoft Power BI. A user creates a chart in her Power BI instance to display customer order patterns for the top 10 customers daily.

You need to configure the Power BI integration to pin the chart to the user's workspace in Dynamics 365 for Finance and Operations.

Which three actions should you perform? Each correct answer presents part of the solution. NOTE: Each correct selection is worth one point.

- A. In the Dynamics 365 for Finance and Operations client, authorize sign-in to Power BI.
B. In Azure Active Directory, grant the customer services manager administrative permissions to the company's Azure Active Directory account to run the report.
C. In Microsoft Azure Active Directory, add the PowerBI service to the app registration and grant the necessary delegated permissions.
D. In the Entity store, configure the Application ID and Application key for PowerBI.
E. In the Dynamics 365 for Finance and Operations System administration setup screen in PowerBI.com, configure the application ID and application key.

Answer: ACE

Explanation:

References:

<https://docs.microsoft.com/en-us/dynamics365/unified-operations/dev-itpro/analytics/configure-power-bi-integr>

NEW QUESTION 74

- (Exam Topic 2)

You plan a data migration from Dynamics AX 2009 to a Dynamics 365 for Finance and Operations environment.

You need to ensure that you can perform the data migration. What should you do first?

- A. Upgrade the existing on-premises environment to Dynamics 365 for Finance and Operations online
- B. Migrate content to Dynamics POS (Point-of-Sale) 2009
- C. Upgrade the existing on-premises environment to Dynamics AX 2012 R2
- D. Migrate content to Dynamics 365 Business Central

Answer: C

NEW QUESTION 77

- (Exam Topic 2)

You assign security roles to users in your company. The security roles contain one or more duty assignments. The purchasing manager role must be able to view payment journals. You need to edit the security configuration to meet the requirement. What should you do?

- A. Create a new security rol
- B. Create a purchasing manager duty and assign it to that rol
- C. Then assign the duty to the user.
- D. Create a new privileg
- E. Assign the View only permission to the privileg
- F. Then assign the privilege to the user.
- G. Edit the existing role and assign the View payment journal transactions permission level.
- H. Edit the duty to view only on the payment journa
- I. The duty is assigned to the purchasing manager role.

Answer: C

NEW QUESTION 82

- (Exam Topic 2)

A company plans to implement the case management feature of Dynamics 365 for Finance and Operations. You need to describe the scenarios in which you should use the case management tool. Which three scenarios should be used? Each correct answer presents a complete solution. NOTE: Each correct selection is worth one point.

- A. Since case activities can be assigned to different people, a case can use workflow.
- B. Although the sales module already has return-order functionality, case management is still used for customer returns and claims.
- C. Knowledge articles used by case management are associated with specific functional modules.
- D. A human resources generalist can use the case management tool to track employee interactions, even though the department stores confidential information about employees.
- E. A case can be used to track both external and internal issues.

Answer: CDE

Explanation:

References:

<https://docs.microsoft.com/en-us/dynamics365/unified-operations/fin-and-ops/organization-administration/cases>

NEW QUESTION 87

- (Exam Topic 2)

Note: This question is part of a series of questions that present the same scenario. Each question in the series contains a unique solution that might meet the stated goals. Some question sets might have more than one correct solution, while others might not have a correct solution.

After you answer a question in this section, you will NOT be able to return to it. As a result, these questions will not appear in the review screen.

You are developing a file-based integration to Dynamics 365 for Finance and Operations.

Microsoft Excel files with 15,000 or more records need to be imported into the system periodically by individual users. The records need to be imported in full within a 5-minute approved window.

You need to determine how to accomplish the import into the system.

Solution: Import the data by using the Data Management Framework's package API. Does the solution meet the goal?

- A. Yes
- B. No

Answer: B

NEW QUESTION 92

- (Exam Topic 2)

You are a Dynamics 365 for Finance and Operations system administrator for a United States-based corporation that is expanding to other regions.

You set up a new legal entity for Brazil.

You need to enable localization for Brazil in the new legal entity. What should you do?

- A. Create a new Lifecycle Services project.
- B. Create a new entity with your corporate address in the system, and then update the address to the Brazil office address.
- C. Create a new legal entity with the Brazil office address in the system, and then set preferences according to the user.
- D. Create a new configuration key and associate it with the Brazil localization.
- E. Create a new entity in the system with your corporate address and set the user language preferences for Brazil.

Answer: D

NEW QUESTION 94

- (Exam Topic 2)

Note: This question is part of a series of questions that present the same scenario. Each question in the series contains a unique solution that might meet the stated goals. Some question sets might have more than one correct solution, while others might not have a correct solution.

After you answer a question in this section, you will NOT be able to return to it. As a result, these questions will not appear in the review screen.

You are a Dynamics 365 for Finance and Operations system administrator. You have a test environment that is used by several people at any given time. You create a new data entity in your development and migrate the code to the test environment. In the test environment, you are unable to find the data entity in the list.

You need to locate the data entity.

Solution: In the Data management framework parameter screen, refresh the Entity list. Does the solution meet the goal?

- A. Yes
- B. No

Answer: A

NEW QUESTION 98

- (Exam Topic 2)

You are a Dynamics 365 for Finance and Operations implementation team lead.

A series of test plans need to be created and tracked during a company's development phase. Multiple users will be testing multiple aspects as code is released. Issues and remediations to bugs will also need to be tracked.

You need to identify Microsoft solutions that offer these capabilities. What should you use?

- A. Microsoft Azure DevOps
- B. Dynamics 365 for Finance and Operations
- C. Solution management
- D. Lifecycle Services (LCS)

Answer: A

NEW QUESTION 100

- (Exam Topic 2)

Note: This question is part of a series of questions that present the same scenario. Each question in the series contains a unique solution that might meet the stated goals. Some question sets might have more than one correct solution, while others might not have a correct solution.

After you answer a question in this section, you will NOT be able to return to it. As a result, these questions will not appear in the review screen.

You are configuring a Dynamics 365 for Finance and Operations environment. You must set up Microsoft Excel data exports.

You need to verify that the solution will result in a successful export of data to Excel. Solution: Use OAuth authentication.

Does the solution meet the goal?

- A. Yes
- B. No

Answer: B

NEW QUESTION 102

- (Exam Topic 2)

A company needs to set up its printers to work with Dynamics 365 for Finance and Operations. You need to set up the printers for network printing from the Dynamics 365 client browser.

Which three actions should be performed in order? To answer, move all actions from the list of actions to the answer area and arrange them in the correct order.

Actions

Activate the network printers

Install and configure a document routing agent

Set up the network printer and assign a static IP

Register network printers in Finance and Operations



Answer Area

- A. Mastered
- B. Not Mastered

Answer: A

Explanation:

References:

<https://docs.microsoft.com/en-us/dynamics365/unified-operations/dev-itpro/analytics/install-document-routing-a>

NEW QUESTION 106

- (Exam Topic 2)

Note: This question is part of a series of questions that present the same scenario. Each question in the series contains a unique solution that might meet the stated goals. Some question sets might have more than one correct solution, while others might not have a correct solution.

After you answer a question in this section, you will NOT be able to return to it. As a result, these questions will not appear in the review screen.

You are a Dynamics 365 for Finance and Operations system administrator. You have a test environment that is used by several people at any given time. You create a new data entity in your development and migrate the code to the test environment. In the test environment, you are unable to find the data entity in the list. You need to locate the data entity. Solution: Reopen the client browser. Does the solution meet the goal?

- A. Yes
- B. No

Answer: B

NEW QUESTION 107

- (Exam Topic 2)
You manage a Dynamics 365 for Finance and Operations environment. In preparation for being migrated into a new environment, data packages are being numbered in alignment with the default numbering formats in Lifecycle Services. A package is named 03.01.002. You need to identify what this package contains. To answer, select the appropriate option in the answer area. NOTE: Each correct selection is worth one point.

Segment	Component
03	<div>The environment The module The data type The month</div>
01	<div>The module The month The sequence number The data type</div>
002	<div>The sequence number The data package version The data entity The data type reference</div>

- A. Mastered
- B. Not Mastered

Answer: A

Explanation:

Segment	Component
03	<div>The environment The module The data type The month</div>
01	<div>The module The month The sequence number The data type</div>
002	<div>The sequence number The data package version The data entity The data type reference</div>

NEW QUESTION 109

- (Exam Topic 2)
Note: This question is part of a series of questions that present the same scenario. Each question in the series contains a unique solution that might meet the stated goals. Some question sets might have more than one correct solution, while others might not have a correct solution. After you answer a question in this section, you will NOT be able to return to it. As a result, these questions will not appear in the review screen. You are developing a file-based integration to Dynamics 365 for Finance and Operations. Microsoft Excel files with 15,000 or more records need to be imported into the system periodically by individual users. The records need to be imported in full within a 5-minute approved window. You need to determine how to accomplish the import into the system. Solution: Import the data by using the Excel Add-in. Does the solution meet the goal?

- A. Yes
- B. No

Answer: A

NEW QUESTION 112

- (Exam Topic 2)
You are a Dynamics 365 for Finance and Operations system administrator. You create different workflows for Canada and the Unites States. You must create a workflow that sends a notification to the North American workflow administrator with workflow comments in the notification. You need to configure the workflows. What option should you select for each scenario? To answer, select the appropriate options in the answer area. NOTE: Each correct selection is worth one point.

Scenario	Option
Include a notification with workflow-specific data.	<div>Notification texts Work item instructions Placeholders Line-item workflows</div>
Run a different workflow for each region.	<div>Condition Automatic action Parallel activity Automated task</div>
Send an email to a group of users by role when a workflow task is rejected.	<div>Workflow user Participant Queue</div>

- A. Mastered
B. Not Mastered

Answer: A

Explanation:

Scenario	Option
Include a notification with workflow-specific data.	<div>Notification texts</div> <div>Work item instructions</div> <div>Placeholders</div> <div>Line-item workflows</div>
Run a different workflow for each region.	<div>Condition</div> <div>Automatic action</div> <div>Parallel activity</div> <div>Automated task</div>
Send an email to a group of users by role when a workflow task is rejected.	<div>Workflow user</div> <div>Participant</div> <div>Queue</div>

NEW QUESTION 113

- (Exam Topic 2)

You set up a new instance of Dynamics 365 for Finance and Operations. Your company sells widgets in cases of 12 units and pallets of 144 cases. You need to establish the units of measure.

Which parameter is used to detail the units of measure? To answer, select the detail to match the parameter in the answer area.

NOTE: Each correct selection is worth one point.

Parameter	Detail
Unit class	<div>Quantity</div> <div>Mass</div> <div>Area</div>
From unit in widgets-per-case conversion	<div>Unit</div> <div>Case</div> <div>Pallet</div> <div>Widgets</div>
To unit in cases-per-pallet conversion	<div>Unit</div> <div>Case</div> <div>Pallet</div> <div>Widgets</div>

- A. Mastered
B. Not Mastered

Answer: A

Explanation:

Parameter	Detail
Unit class	<div>Quantity</div> <div>Mass</div> <div>Area</div>
From unit in widgets-per-case conversion	<div>Unit</div> <div>Case</div> <div>Pallet</div> <div>Widgets</div>
To unit in cases-per-pallet conversion	<div>Unit</div> <div>Case</div> <div>Pallet</div> <div>Widgets</div>

NEW QUESTION 114

- (Exam Topic 2)

Note: This question is part of a series of questions that present the same scenario. Each question in the series contains a unique solution that might meet the stated goals. Some question sets might have more than one correct solution, while others might not have a correct solution.

After you answer a question in this section, you will NOT be able to return to it. As a result, these questions will not appear in the review screen.

You are developing a file-based integration to Dynamics 365 for Finance and Operations.

Microsoft Excel files with 15,000 or more records need to be imported into the system periodically by individual users. The records need to be imported in full within a 5-minute approved window.

You need to determine how to accomplish the import into the system. Solution: Import the data by using the recurring data integrations API. Does the solution meet the goal?

- A. Yes
B. No

Answer: B

NEW QUESTION 117

.....

About ExamBible

[Your Partner of IT Exam](#)

Found in 1998

ExamBible is a company specialized on providing high quality IT exam practice study materials, especially Cisco CCNA, CCDA, CCNP, CCIE, Checkpoint CCSE, CompTIA A+, Network+ certification practice exams and so on. We guarantee that the candidates will not only pass any IT exam at the first attempt but also get profound understanding about the certificates they have got. There are so many alike companies in this industry, however, ExamBible has its unique advantages that other companies could not achieve.

Our Advances

* 99.9% Uptime

All examinations will be up to date.

* 24/7 Quality Support

We will provide service round the clock.

* 100% Pass Rate

Our guarantee that you will pass the exam.

* Unique Gurantee

If you do not pass the exam at the first time, we will not only arrange FULL REFUND for you, but also provide you another exam of your claim, ABSOLUTELY FREE!

NEW QUESTION 1

- (Exam Topic 1)
You need to configure the system for account representatives.
Which two actions should you perform? Each correct answer presents a partial solution.
NOTE: Each correct selection is worth one point.

- A. Recreate the job alert as a change-based alert.
- B. Enable change-based alerts.
- C. Increase the batch job running frequency.
- D. Specify the batch server for the alert notifications job.

Answer: AB

NEW QUESTION 2

- (Exam Topic 1)
You need to configure check printing for Munson's.
Which four actions should you perform in sequence? To answer, move the appropriate actions from the list of actions to the answer area and arrange them in the correct order.

Actions

Install the Document Routing Agent on the client machines where users will be printing the checks.

Navigate to the legal entity and enable the printer.

Select the legal entities for the printer to be available.

Discover and add the check printer from the Document Routing Agent.

Enter the Dynamics 365 Finance and Operations configurations in the Document Routing Agent.

Discover and add the check printer to the system from Dynamics 365 Finance and Operations.

Install the Document Routing Agent on the corporate print server.

Register the Document Routing Agent with Dynamics 365 Finance and Operations.

Answer Area

⏪

⏩

⬆

⬇

- A. Mastered
- B. Not Mastered

Answer: A

Explanation:
Reference:
<https://docs.microsoft.com/en-us/dynamics365/unified-operations/dev-itpro/analytics/install-document-routing-a>

NEW QUESTION 3

- (Exam Topic 1)
You need to connect the Excel instance to the Relecloud production instance. What should you do?

- A. Set the server URL to Microsoft.Dynamics.Platform.Integration.Office.UrlViewerApplet.
- B. Set the server URL to <https://relecloud-prod.operations.dynamics.com>.
- C. Set the App Correlation ID to <https://relecloud-prod.operations.dynamics.com>.
- D. Set the App Correlation ID to the App Id in the Dynamics 365 Office App Parameters.

Answer: B

Explanation:
Reference:
<https://docs.microsoft.com/en-us/dynamics365/unified-operations/dev-itpro/office-integration/use-excel-add-in>

NEW QUESTION 4

- (Exam Topic 1)

You need to determine why the sales associate is not able to see Munson's in the search results. What is the cause of the issue?

- A. The search criteria is searching for only names that are exactly 'pickles'.
- B. The search criteria is only able to search by the shortened search name of the customer.
- C. The search criteria is searching for all customer names that start with 'pickles'.
- D. The search criteria is case sensitive.

Answer: C

Explanation:

Reference:

<https://docs.microsoft.com/en-us/dynamics365/customer-engagement/basics/search-records>

NEW QUESTION 5

- (Exam Topic 2)

You plan the migration from Dynamics AX 2012 R3 to a Dynamics 365 for Finance and Operations environment. You will be using Lifecycle Services (LCS) and the tools provided with it.

You need to clean up data, review and configure SQL optimizations, and identify deprecated features in your code. What tool should you use?

- A. Microsoft Azure DevOps
- B. Upgrade analyzer
- C. Data Import/Export Framework (DIXF)
- D. Code upgrade estimation tools

Answer: B

NEW QUESTION 6

- (Exam Topic 2)

You are a Dynamics 365 for Finance and Operations system administrator.

You use Lifecycle Services (LCS) for your deployment. The company currently has multiple methodologies assigned to various projects. One methodology is incorrectly assigned and must be changed.

You need to change the methodology on an existing project.

Which two options can you use? Each correct answer presents a complete solution. NOTE: Each correct selection is worth one point.

- A. Change methodology
- B. Project settings
- C. Manage methodologies
- D. Edit methodology

Answer: AC

NEW QUESTION 7

- (Exam Topic 2)

You are the project owner in a Lifecycle Services (LCS) project to deploy a Dynamics 365 for Finance and Operations environment.

The system must be configured to enable testers to record processes that become business processes and test plans.

You need to configure the system to generate User Acceptance Testing (UAT) test plans.

In which order should you perform the actions? To answer, move all actions from the list of actions to the answer area and arrange them in the correct order.

Actions

Create business process libraries in the LCS project.

Enable Azure DevOps sync.

Configure Azure DevOps for the LCS project.

Configure system administrator help parameters to the LCS project.

Enable Sync test cases.

>

<

Answer Area

↑



↓

- A. Mastered
- B. Not Mastered

Answer: A

Explanation:

Actions	Answer Area
Create business process libraries in the LCS project.	Create business process libraries in the LCS project.
Enable Azure DevOps sync.	Configure Azure DevOps for the LCS project.
Configure Azure DevOps for the LCS project.	Configure system administrator help parameters to the LCS project.
Configure system administrator help parameters to the LCS project.	Enable Azure DevOps sync.
Enable Sync test cases.	Enable Sync test cases.

NEW QUESTION 8

- (Exam Topic 2)

You are a Dynamics 365 for Finance and Operations system administrator. You have production and testing environments. You move the workflow from the testing environment to the production environment.

The workflow in the production environment is stuck in a wait state.

You need to resolve the issue with the workflow in the production environment. What should you do?

- A. Set the workflow batch job to critical
- B. Set the workflow messaging batch job group
- C. Grant the user workflow permissions
- D. Set the workflow execution account in the workflow parameters

Answer: D

NEW QUESTION 9

- (Exam Topic 2)

A company implements Dynamics 365 for Finance and Operations.

They need additional information and want a subledger to record information for additional reporting rather than customizing all reports.

You need to set up the posting to accommodate the need for a subledger. Which three actions should you take? Each answer presents part of the solution.

- A. Update existing reports to prevent data in the identified area from reporting
- B. Create posting profiles to post to the identified area as needed for the request
- C. Create posting definitions to post to the identified area as needed for the request
- D. Update existing reports to add data in the identified area
- E. Identify an area of the chart of accounts to record to as the subledger

Answer: BDE

NEW QUESTION 10

- (Exam Topic 2)

Note: This question is part of a series of questions that present the same scenario. Each question in the series contains a unique solution that might meet the stated goals. Some question sets might have more than one correct solution, while others might not have a correct solution.

After you answer a question in this section, you will NOT be able to return to it. As a result, these questions will not appear in the review screen.

You are a Dynamics 365 for Finance and Operations system administrator. You have a test environment that is used by several people at any given time.

You create a new data entity in your development and migrate the code to the test environment. In the test environment, you are unable to find the data entity in the list.

You need to locate the data entity.

Solution: Restart the Application Object Server (AOS) of the test environment. Does the solution meet the goal?

- A. Yes
- B. No

Answer: B

NEW QUESTION 10

- (Exam Topic 2)

You are a Dynamics 365 for Finance and Operations system administrator.

A company named Contoso Ltd. is creating a new legal entity that will be similar to an existing legal entity. Team members copy key entities to the new legal entity using the Data management workspace. They indicate that there were already-configured pieces of data unique to the new legal entity before they ran the Copy into legal entity process.

The data import/export framework settings are listed in the table below:

Setting	Current value
Ignore error	Yes
Create error file	Yes
Remove duplicates	Yes

You need to determine what happened to the already-configured pieces of data. What happened to the data?

- A. Any source legal entity data that already exists in the destination legal entity will be updated.
B. Any destination legal entity data will be deleted, and the source data will be inserted.
C. Any source legal entity data that already exists in the destination legal entity will be ignored.
D. Any source legal entity data that already exists in the destination legal entity will be displayed as an error for user action in the Data management workspace.

Answer: C

NEW QUESTION 12

- (Exam Topic 2)

A company implements Dynamics 365 for Finance and Operations.

You have a requirement that the component data for address structure in the system be available in Portuguese (Brazil).

You need to provide address and contact information purpose with translation. What should you do?

- A. Under Organization administration, on the Global addresses tab, enter the appropriate translation value in the translations form
B. In User options, set the language preference to Portuguese pt-BR and enter addresses for customers and vendors
C. Upload files to Dynamics 365 Translation Services (DTS) for conversion
D. Apply return from Dynamics 365 Translation Services (DTS) to the system by submitting a support ticket

Answer: A

NEW QUESTION 17

- (Exam Topic 2)

A company plans to use Dynamics 365 for Finance and Operations. You need to implement the security architecture.

Which component should you use for each requirement? To answer, select the appropriate security component in the answer area.

NOTE: Each correct selection is worth one point.

Answer Area

Requirement	Security component
Group the security configuration for employees with the same job function.	<div>Security roles</div> <div>Duties</div> <div>Privileges</div> <div>Permissions</div>
Assign check-depositing tasks to a group of people as part of the accounts receivable process.	<div>Security roles</div> <div>Duties</div> <div>Privileges</div> <div>Permissions</div>
Restrict access to a specific table or chart.	<div>Security roles</div> <div>Duties</div> <div>Privileges</div> <div>Permissions</div>

- A. Mastered
B. Not Mastered

Answer: A

Explanation:

Answer Area

Requirement	Security component
Group the security configuration for employees with the same job function.	<div>Security roles</div> <div>Duties</div> <div>Privileges</div> <div>Permissions</div>
Assign check-depositing tasks to a group of people as part of the accounts receivable process.	<div>Security roles</div> <div>Duties</div> <div>Privileges</div> <div>Permissions</div>
Restrict access to a specific table or chart.	<div>Security roles</div> <div>Duties</div> <div>Privileges</div> <div>Permissions</div>

NEW QUESTION 18

- (Exam Topic 2)

A company plans to use record templates in its implementation. You need to set up and use record templates.

Which three actions should you perform in sequence to create the record templates? To answer, move the appropriate actions from the list of actions to the answer area and arrange them in the correct order.

Actions

Answer Area

Use the Record info feature

Create a user template

Create a company accounts template

Change the Record view property

Identify the templatized record



- A. Mastered
- B. Not Mastered

Answer: A

Explanation:

References:

<https://docs.microsoft.com/en-us/dynamics365/unified-operations/dev-itpro/data-entities/tasks/create-record-tem>

NEW QUESTION 22

- (Exam Topic 2)

Note: This question is part of a series of questions that present the same scenario. Each question in the series contains a unique solution that might meet the stated goals. Some question sets might have more than one correct solution, while others might not have a correct solution.

After you answer a question in this section, you will NOT be able to return to it. As a result, these questions will not appear in the review screen.

You are a functional consultant who is deploying Dynamics 365 for Finance and Operations. The implementation must:

- ☐ Use an iterative approach
- ☐ Integrate with real-world data
- ☐ Enforce standards and governance
- ☐ Implement multiple rounds of feedback

You need to deploy and validate the implementation.

Solution: Deploy the out-of-the-box solution. Enable users to customize the solution based on individual user scenarios.

Does the solution meet the goal?

- A. Yes
- B. No

Answer: B

NEW QUESTION 25

- (Exam Topic 2)

You are responsible for regulatory compliance for a Dynamics 365 for Finance and Operations environment. You need to be able to search for the regulatory features of Dynamics 365 for Finance and Operations.

What should you use?

- A. Intelligent Data Management Framework (IDMF)
- B. System diagnostics
- C. Application Object Tree (AOT)
- D. Issue search

Answer: D

Explanation:

References:

<https://docs.microsoft.com/en-us/dynamics365/unified-operations/dev-itpro/lifecycle-services/issue-search-lcs>

NEW QUESTION 28

- (Exam Topic 2)

An organization implements Dynamics 365 for Finance and Operations.

You need to determine where work items originate.

From which module do the following work items originate? To answer, drag the appropriate modules to the correct work items. Each module may be used once, more than once, or not at all. You may need to drag the split bar between panes or scroll to view content.

NOTE: Each correct selection is worth one point.

3

4

5

6

7

Modules

Accounts payable

Accounts receivable

Inventory management

Credit and collections

Answer Area

Work item

Purchase order

Invoice

Vendor invoice

Transfer order

Module

Module

Module

Module

- A. Mastered
- B. Not Mastered

Answer: A

Explanation:

3

4

5

6

7

Modules

Accounts payable

Accounts receivable

Inventory management

Credit and collections

Answer Area

Work item

Purchase order

Invoice

Vendor invoice

Transfer order

Module

Accounts payable

Accounts receivable

Accounts payable

Inventory management

NEW QUESTION 30

- (Exam Topic 2)

A multinational company plans to implement centralized procurement using purchase requisition workflows. Multiple workflows must be of the same type. Each region must use its own purchase requisition workflow. You need to implement the workflows. What should you do?

- A. Configure Instructions for users
- B. Configure the workflow owner
- C. Configure automated tasks
- D. Configure manual tasks
- E. Add a condition for running the workflow

Answer: E

NEW QUESTION 34

- (Exam Topic 2)

You are a Dynamics 365 for Finance and Operations system administrator for a new implementation. You have a solution that needs to be tested using User Acceptance Testing (UAT). You have created a Business process modeler (BPM) library. You need to validate and support the solution. Which three actions should you perform? Each answer presents part of the solution.

- A. Upload the saved recording to BPM.
- B. Create a new Business process library
- C. Export the task recording to Microsoft Word and upload it to BPM.
- D. Record test cases and save them to BPM.
- E. Create and save a new task recording.

Answer: ABD

NEW QUESTION 36

- (Exam Topic 2)

You are responsible for automation efforts in a Dynamics 365 for Finance and Operations environment. You are running into performance issues on a specific Application Object Server (AOS) that is over-used. You need to alter your batch processing of high-demand items to have affinity to a new AOS server. What batch processing component should you change?

- A. Batch task
- B. Batch group
- C. Batch periods
- D. Batch job

Answer: A

NEW QUESTION 37

- (Exam Topic 2)

A company implements Dynamics 365 for Finance and Operations. It must set up the system to be ready for entering inventory items. You need to select which unit of conversion fits the scenario.

Which conversion types should you use? To answer, select the appropriate options in the answer area. NOTE: Each correct selection is worth one point.

Answer Area

Scenario	Conversion type
Car paint colors and their ingredients are purchased in barrels, stocked in ounces, and sold in gallons.	<div>Standard</div> <div>Intra-class</div> <div>Inter-class</div>
Steel is purchased in tons, stocked in pounds, and sold in linear feet.	<div>Standard</div> <div>Intra-class</div> <div>Inter-class</div>
Bolts and nuts are purchased in pounds, stocked as individual units, and sold in boxes.	<div>Standard</div> <div>Intra-class</div> <div>Inter-class</div>

- A. Mastered
- B. Not Mastered

Answer: A

Explanation:

Answer Area

Scenario	Conversion type
Car paint colors and their ingredients are purchased in barrels, stocked in ounces, and sold in gallons.	<div>Standard</div> <div>Intra-class</div> <div>Inter-class</div>
Steel is purchased in tons, stocked in pounds, and sold in linear feet.	<div>Standard</div> <div>Intra-class</div> <div>Inter-class</div>
Bolts and nuts are purchased in pounds, stocked as individual units, and sold in boxes.	<div>Standard</div> <div>Intra-class</div> <div>Inter-class</div>

NEW QUESTION 42

- (Exam Topic 2)

You are configuring the address books for a company's accounts receivable, accounts payable, and retail operations.

You need to configure the appropriate address books to meet various requirements.

Which address book should you use for each scenario? To answer, drag the appropriate address book objects to the correct scenarios. Each address book object may be used once, more than once, or not at all. You may need to drag the spit bar between panes or scroll to view content.

NOTE: Each correct selection is worth one point.

Address Book Object	Answer Area	Address Book Object
<div>employee</div>	<div>Scenario</div>	
<div>global</div>	Restrict account visibility for a given retail channel transaction.	<div>Address Book Object</div>
<div>customer</div>	Create an address for a vendor.	<div>Address Book Object</div>
<div>contact</div>	Link workers to retail locations.	<div>Address Book Object</div>
	Create an address for a prospect.	<div>Address Book Object</div>

- A. Mastered
- B. Not Mastered

Answer: A

Explanation:

Address Book Object	Scenario	Address Book Object
employee	Restrict account visibility for a given retail channel transaction. Create an address for a vendor. Link workers to retail locations. Create an address for a prospect.	customer
global		global
customer		employee
contact		contact

NEW QUESTION 47

- (Exam Topic 2)

A company implements Dynamics 365 for Finance and Operations.

You are responsible for creating a custom feature within a solution by using Microsoft Azure DevOps. Testers have found a bug while running one of the User Acceptance Testing (UAT) scripts. However, it is not a high-severity bug and has been found to not have interconnected dependencies to other branches within the process flow.

You need to deploy the passed functionality features. What should you do?

- A. Exclude the specific package from the Business process modeler (BPM).
- B. Exclude the specific package from the data package in the Data management tool.
- C. Exclude the specific package from the deployable package in Microsoft Azure DevOps.
- D. Exclude the specific package from the deployable package in Configuration data manager.

Answer: C

NEW QUESTION 50

- (Exam Topic 2)

Note: This question is part of a series of questions that present the same scenario. Each question in the series contains a unique solution that might meet the stated goals. Some question sets might have more than one correct solution, while others might not have a correct solution.

After you answer a question in this section, you will NOT be able to return to it. As a result, these questions will not appear in the review screen.

You are configuring a Dynamics 365 for Finance and Operations environment. You must set up Microsoft Excel data exports.

You need to verify that the solution will result in a successful export of data to Excel.

Solution: Use Workbook Designer to build an editable custom export of customer data that includes only postal code, city, and state.

Does the solution meet the goal?

- A. Yes
- B. No

Answer: A

NEW QUESTION 51

- (Exam Topic 2)

Note: This question is part of a series of questions that present the same scenario. Each question in the series contains a unique solution that might meet the stated goals. Some question sets might have more than one correct solution, while others might not have a correct solution.

After you answer a question in this section, you will NOT be able to return to it. As a result, these questions will not appear in the review screen.

You are a functional consultant who is deploying Dynamics 365 for Finance and Operations. The implementation must:

- ▶ Use an iterative approach
- ▶ Integrate with real-world data
- ▶ Enforce standards and governance
- ▶ Implement multiple rounds of feedback

You need to deploy and validate the implementation.

Solution: Perform a fit-gap analysis. Configure Dynamics 365 for Finance and Operations to address the functional gap. Deploy the configuration.

Does the solution meet the goal?

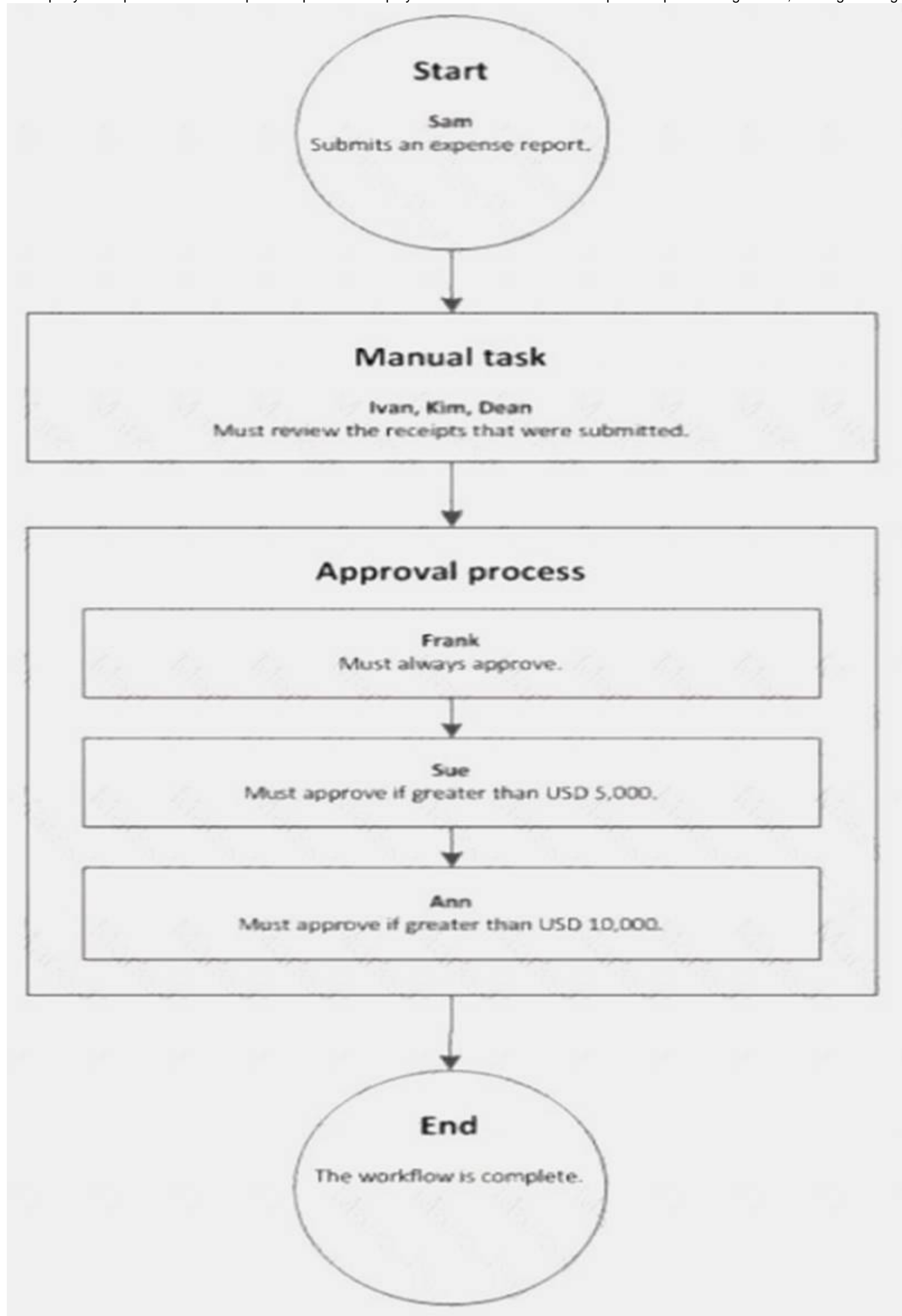
- A. Yes
- B. No

Answer: A

NEW QUESTION 52

- (Exam Topic 2)

A company sets up a workflow for expense reports. An employee named Sam submits an expense report totaling USD 7,000 to go through the workflow.



Use the drop-down menus to select the answer choice that answers each question based on the information presented in the graphic.

NOTE: Each correct selection is worth one point.

Answer Area	
Questions	Answer choice
What statement about the workflow is correct?	<div>Ann can reject the expense report.</div> <div>Ivan, Kim, and Dean must all complete the manual task.</div> <div>The workflow ends after Sue approves the expense report.</div> <div>The expense report will go through Frank, Sue, and Ann for approval.</div>
What type of workflow is this?	<div>Workflow with roles</div> <div>Workflow with a manual decision</div> <div>Workflow with multiple users in a task</div> <div>Workflow with a line-item workflow element</div>

- A. Mastered
- B. Not Mastered

Answer: A

Explanation:

Reference:
<https://docs.microsoft.com/en-us/dynamicsax-2012/appuser-itpro/workflow-with-multiple-users-in-a-task>

NEW QUESTION 57

- (Exam Topic 2)

You are a Dynamics 365 for Finance and Operations system administrator.
A user is reporting an issue with the Sales Order form. The UI for the form is not loading properly, and there are some performance issues. The object was working fine until the most recent update release. The user has personalized this form, is using Microsoft Internet Explorer 11, and no other users are reporting issues. You need to resolve the issue. What should you do?

- A. Switch to Microsoft Edge instead of Internet Explorer 11.
- B. Open the form in a new Microsoft Edge InPrivate session.
- C. Delete the sales form object in the usage data form.
- D. Disable and then re-enable the user.

Answer: A

NEW QUESTION 61

- (Exam Topic 2)

You set up Dynamics 365 for Finance and Operations. Your organization will use email with the application. You need to ensure that email will be sent using typical secure settings. What setting must be set up as specified?

- A. Specify if SSL is required is selected.
- B. Information rights management is enabled.
- C. In-place hold and Litigation hold are enabled.
- D. In-place eDiscovery is enabled.

Answer: A

NEW QUESTION 64

- (Exam Topic 2)

Your company is using a highly customized version of Dynamics 365 for Finance and Operations. You have identified a new hotfix that will correct several important issues that have caused many user complaints.
You need to determine whether the hotfix will break any customizations.
Which four actions should you perform in sequence? To answer, move the appropriate actions from the list of actions to the answer area and arrange them in the correct order.

Actions

Answer Area

Upload the hotfix to Lifecycle Services

Download the hotfix from Lifecycle Services

Check in the entire hotfix as pending change and schedule and deploy it to the production environment

Build the hotfix in the development environment and accept changes

Install the hotfix in your Microsoft Azure DevOps application development environment in an Active state

Install the hotfix in your Microsoft Azure DevOps application development environment in a Pending state



- A. Mastered
B. Not Mastered

Answer: A

Explanation:

References:

<https://docs.microsoft.com/en-us/dynamics365/unified-operations/dev-itpro/migration-upgrade/install-metadata->

NEW QUESTION 66

- (Exam Topic 2)

Note: This question is part of a series of questions that present the same scenario. Each question in the series contains a unique solution that might meet the stated goals. Some question sets might have more than one correct solution, while others might not have a correct solution.

After you answer a question in this section, you will NOT be able to return to it. As a result, these questions will not appear in the review screen.

You are a Dynamics 365 for Finance and Operations security administrator.

When testing security setups, users report that certain roles are gaining access to sensitive information via a form in the system.

You must investigate which user roles have what visibility and access level to system objects, and then send a report to the implementation team to address security compliance concerns.

You need to report the information from the system. Solution: Generate the User role assignments report. Does the solution meet the goal?

- A. Yes
B. No

Answer: B

NEW QUESTION 70

- (Exam Topic 2)

A company implements Dynamics 365 for Finance and Operations and sets up and configures the system to support its reporting requirements using Microsoft Power BI. A user creates a chart in her Power BI instance to display customer order patterns for the top 10 customers daily.

You need to configure the Power BI integration to pin the chart to the user's workspace in Dynamics 365 for Finance and Operations.

Which three actions should you perform? Each correct answer presents part of the solution. NOTE: Each correct selection is worth one point.

- A. In the Dynamics 365 for Finance and Operations client, authorize sign-in to Power BI.
B. In Azure Active Directory, grant the customer services manager administrative permissions to the company's Azure Active Directory account to run the report.
C. In Microsoft Azure Active Directory, add the PowerBI service to the app registration and grant the necessary delegated permissions.
D. In the Entity store, configure the Application ID and Application key for PowerBI.
E. In the Dynamics 365 for Finance and Operations System administration setup screen in PowerBI.com, configure the application ID and application key.

Answer: ACE

Explanation:

References:

<https://docs.microsoft.com/en-us/dynamics365/unified-operations/dev-itpro/analytics/configure-power-bi-integr>

NEW QUESTION 74

- (Exam Topic 2)

You plan a data migration from Dynamics AX 2009 to a Dynamics 365 for Finance and Operations environment.

You need to ensure that you can perform the data migration. What should you do first?

- A. Upgrade the existing on-premises environment to Dynamics 365 for Finance and Operations online
- B. Migrate content to Dynamics POS (Point-of-Sale) 2009
- C. Upgrade the existing on-premises environment to Dynamics AX 2012 R2
- D. Migrate content to Dynamics 365 Business Central

Answer: C

NEW QUESTION 77

- (Exam Topic 2)

You assign security roles to users in your company. The security roles contain one or more duty assignments. The purchasing manager role must be able to view payment journals. You need to edit the security configuration to meet the requirement. What should you do?

- A. Create a new security rol
- B. Create a purchasing manager duty and assign it to that rol
- C. Then assign the duty to the user.
- D. Create a new privileg
- E. Assign the View only permission to the privileg
- F. Then assign the privilege to the user.
- G. Edit the existing role and assign the View payment journal transactions permission level.
- H. Edit the duty to view only on the payment journa
- I. The duty is assigned to the purchasing manager role.

Answer: C

NEW QUESTION 82

- (Exam Topic 2)

A company plans to implement the case management feature of Dynamics 365 for Finance and Operations. You need to describe the scenarios in which you should use the case management tool. Which three scenarios should be used? Each correct answer presents a complete solution. NOTE: Each correct selection is worth one point.

- A. Since case activities can be assigned to different people, a case can use workflow.
- B. Although the sales module already has return-order functionality, case management is still used for customer returns and claims.
- C. Knowledge articles used by case management are associated with specific functional modules.
- D. A human resources generalist can use the case management tool to track employee interactions, even though the department stores confidential information about employees.
- E. A case can be used to track both external and internal issues.

Answer: CDE

Explanation:

References:

<https://docs.microsoft.com/en-us/dynamics365/unified-operations/fin-and-ops/organization-administration/cases>

NEW QUESTION 87

- (Exam Topic 2)

Note: This question is part of a series of questions that present the same scenario. Each question in the series contains a unique solution that might meet the stated goals. Some question sets might have more than one correct solution, while others might not have a correct solution.

After you answer a question in this section, you will NOT be able to return to it. As a result, these questions will not appear in the review screen.

You are developing a file-based integration to Dynamics 365 for Finance and Operations.

Microsoft Excel files with 15,000 or more records need to be imported into the system periodically by individual users. The records need to be imported in full within a 5-minute approved window.

You need to determine how to accomplish the import into the system.

Solution: Import the data by using the Data Management Framework's package API. Does the solution meet the goal?

- A. Yes
- B. No

Answer: B

NEW QUESTION 92

- (Exam Topic 2)

You are a Dynamics 365 for Finance and Operations system administrator for a United States-based corporation that is expanding to other regions.

You set up a new legal entity for Brazil.

You need to enable localization for Brazil in the new legal entity. What should you do?

- A. Create a new Lifecycle Services project.
- B. Create a new entity with your corporate address in the system, and then update the address to the Brazil office address.
- C. Create a new legal entity with the Brazil office address in the system, and then set preferences according to the user.
- D. Create a new configuration key and associate it with the Brazil localization.
- E. Create a new entity in the system with your corporate address and set the user language preferences for Brazil.

Answer: D

NEW QUESTION 94

- (Exam Topic 2)

Note: This question is part of a series of questions that present the same scenario. Each question in the series contains a unique solution that might meet the stated goals. Some question sets might have more than one correct solution, while others might not have a correct solution.

After you answer a question in this section, you will NOT be able to return to it. As a result, these questions will not appear in the review screen.

You are a Dynamics 365 for Finance and Operations system administrator. You have a test environment that is used by several people at any given time. You create a new data entity in your development and migrate the code to the test environment. In the test environment, you are unable to find the data entity in the list.

You need to locate the data entity.

Solution: In the Data management framework parameter screen, refresh the Entity list. Does the solution meet the goal?

- A. Yes
- B. No

Answer: A

NEW QUESTION 98

- (Exam Topic 2)

You are a Dynamics 365 for Finance and Operations implementation team lead.

A series of test plans need to be created and tracked during a company's development phase. Multiple users will be testing multiple aspects as code is released. Issues and remediations to bugs will also need to be tracked.

You need to identify Microsoft solutions that offer these capabilities. What should you use?

- A. Microsoft Azure DevOps
- B. Dynamics 365 for Finance and Operations
- C. Solution management
- D. Lifecycle Services (LCS)

Answer: A

NEW QUESTION 100

- (Exam Topic 2)

Note: This question is part of a series of questions that present the same scenario. Each question in the series contains a unique solution that might meet the stated goals. Some question sets might have more than one correct solution, while others might not have a correct solution.

After you answer a question in this section, you will NOT be able to return to it. As a result, these questions will not appear in the review screen.

You are configuring a Dynamics 365 for Finance and Operations environment. You must set up Microsoft Excel data exports.

You need to verify that the solution will result in a successful export of data to Excel. Solution: Use OAuth authentication.

Does the solution meet the goal?

- A. Yes
- B. No

Answer: B

NEW QUESTION 102

- (Exam Topic 2)

A company needs to set up its printers to work with Dynamics 365 for Finance and Operations. You need to set up the printers for network printing from the Dynamics 365 client browser.

Which three actions should be performed in order? To answer, move all actions from the list of actions to the answer area and arrange them in the correct order.

Actions

Activate the network printers

Install and configure a document routing agent

Set up the network printer and assign a static IP

Register network printers in Finance and Operations



Answer Area

- A. Mastered
- B. Not Mastered

Answer: A

Explanation:

References:

<https://docs.microsoft.com/en-us/dynamics365/unified-operations/dev-itpro/analytics/install-document-routing-a>

NEW QUESTION 106

- (Exam Topic 2)

Note: This question is part of a series of questions that present the same scenario. Each question in the series contains a unique solution that might meet the stated goals. Some question sets might have more than one correct solution, while others might not have a correct solution.

After you answer a question in this section, you will NOT be able to return to it. As a result, these questions will not appear in the review screen.

You are a Dynamics 365 for Finance and Operations system administrator. You have a test environment that is used by several people at any given time. You create a new data entity in your development and migrate the code to the test environment. In the test environment, you are unable to find the data entity in the list. You need to locate the data entity. Solution: Reopen the client browser. Does the solution meet the goal?

- A. Yes
- B. No

Answer: B

NEW QUESTION 107

- (Exam Topic 2)
You manage a Dynamics 365 for Finance and Operations environment. In preparation for being migrated into a new environment, data packages are being numbered in alignment with the default numbering formats in Lifecycle Services. A package is named 03.01.002. You need to identify what this package contains. To answer, select the appropriate option in the answer area. NOTE: Each correct selection is worth one point.

Segment	Component
03	<div>The environment The module The data type The month</div>
01	<div>The module The month The sequence number The data type</div>
002	<div>The sequence number The data package version The data entity The data type reference</div>

- A. Mastered
- B. Not Mastered

Answer: A

Explanation:

Segment	Component
03	<div>The environment The module The data type The month</div>
01	<div>The module The month The sequence number The data type</div>
002	<div>The sequence number The data package version The data entity The data type reference</div>

NEW QUESTION 109

- (Exam Topic 2)
Note: This question is part of a series of questions that present the same scenario. Each question in the series contains a unique solution that might meet the stated goals. Some question sets might have more than one correct solution, while others might not have a correct solution. After you answer a question in this section, you will NOT be able to return to it. As a result, these questions will not appear in the review screen. You are developing a file-based integration to Dynamics 365 for Finance and Operations. Microsoft Excel files with 15,000 or more records need to be imported into the system periodically by individual users. The records need to be imported in full within a 5-minute approved window. You need to determine how to accomplish the import into the system. Solution: Import the data by using the Excel Add-in. Does the solution meet the goal?

- A. Yes
- B. No

Answer: A

NEW QUESTION 112

- (Exam Topic 2)
You are a Dynamics 365 for Finance and Operations system administrator. You create different workflows for Canada and the Unites States. You must create a workflow that sends a notification to the North American workflow administrator with workflow comments in the notification. You need to configure the workflows. What option should you select for each scenario? To answer, select the appropriate options in the answer area. NOTE: Each correct selection is worth one point.

Scenario	Option
Include a notification with workflow-specific data.	<div>Notification texts Work item instructions Placeholders Line-item workflows</div>
Run a different workflow for each region.	<div>Condition Automatic action Parallel activity Automated task</div>
Send an email to a group of users by role when a workflow task is rejected.	<div>Workflow user Participant Queue</div>

- A. Mastered
- B. Not Mastered

Answer: A

Explanation:

Scenario	Option
Include a notification with workflow-specific data.	<div>Notification texts</div> <div>Work item instructions</div> <div>Placeholders</div> <div>Line-item workflows</div>
Run a different workflow for each region.	<div>Condition</div> <div>Automatic action</div> <div>Parallel activity</div> <div>Automated task</div>
Send an email to a group of users by role when a workflow task is rejected.	<div>Workflow user</div> <div>Participant</div> <div>Queue</div>

NEW QUESTION 113

- (Exam Topic 2)

You set up a new instance of Dynamics 365 for Finance and Operations. Your company sells widgets in cases of 12 units and pallets of 144 cases. You need to establish the units of measure.

Which parameter is used to detail the units of measure? To answer, select the detail to match the parameter in the answer area.

NOTE: Each correct selection is worth one point.

Parameter	Detail
Unit class	<div>Quantity</div> <div>Mass</div> <div>Area</div>
From unit in widgets-per-case conversion	<div>Unit</div> <div>Case</div> <div>Pallet</div> <div>Widgets</div>
To unit in cases-per-pallet conversion	<div>Unit</div> <div>Case</div> <div>Pallet</div> <div>Widgets</div>

- A. Mastered
- B. Not Mastered

Answer: A

Explanation:

Parameter	Detail
Unit class	<div>Quantity</div> <div>Mass</div> <div>Area</div>
From unit in widgets-per-case conversion	<div>Unit</div> <div>Case</div> <div>Pallet</div> <div>Widgets</div>
To unit in cases-per-pallet conversion	<div>Unit</div> <div>Case</div> <div>Pallet</div> <div>Widgets</div>

NEW QUESTION 114

- (Exam Topic 2)

Note: This question is part of a series of questions that present the same scenario. Each question in the series contains a unique solution that might meet the stated goals. Some question sets might have more than one correct solution, while others might not have a correct solution.

After you answer a question in this section, you will NOT be able to return to it. As a result, these questions will not appear in the review screen.

You are developing a file-based integration to Dynamics 365 for Finance and Operations.

Microsoft Excel files with 15,000 or more records need to be imported into the system periodically by individual users. The records need to be imported in full within a 5-minute approved window.

You need to determine how to accomplish the import into the system. Solution: Import the data by using the recurring data integrations API. Does the solution meet the goal?

- A. Yes
- B. No

Answer: B

NEW QUESTION 117

.....

Relate Links

100% Pass Your mb-300 Exam with ExamBible Prep Materials

<https://www.exambible.com/mb-300-exam/>

Contact us

We are proud of our high-quality customer service, which serves you around the clock 24/7.

Viste - <https://www.exambible.com/>