

Exam Questions AZ-400

Microsoft Azure DevOps Solutions (beta)

<https://www.2passeasy.com/dumps/AZ-400/>



NEW QUESTION 1

SIMULATION - (Topic 4)

You need to create a notification if the peak average response time of an Azure web app named az400-9940427-main is more than five seconds when evaluated during a five- minute period. The notification must trigger the “https://contoso.com/notify” webhook.

To complete this task, sign in to the Microsoft Azure portal.

- A. Mastered
B. Not Mastered

Answer: A**Explanation:**

- * 1. Open Microsoft Azure Portal
 - * 2. Log into your Azure account and go to App Service and look under Monitoring then you will see Alert.
 - * 3. Select Add an alert rule
 - * 4. Configure the alert rule as per below and click Ok. Source: Alert on Metrics
- Resource Group: az400-9940427-main Resource: az400-9940427-main Threshold: 5
Period: Over the last 5 minutes Webhook: https://contoso.com/notify

Add an alert rule

* **Threshold** ⓘ

1

bytes/second

* **Period** ⓘ

Over the last 5 minutes ▼

Email service and co-administrators

☐

Additional administrator email

Additional administrator email

Webhook ⓘ

HTTP or HTTPS endpoint to route alerts to

[Learn more about configuring webhooks](#)

OK

References:

<https://azure.microsoft.com/es-es/blog/webhooks-for-azure-alerts/>**NEW QUESTION 2**

SIMULATION - (Topic 4)

You need to create an instance of Azure Application Insights named az400-9940427-main and configure the instance to receive telemetry data from an Azure web app named az400- 9940427-main.

To complete this task, sign in to the Microsoft Azure portal.

- A. Mastered
B. Not Mastered

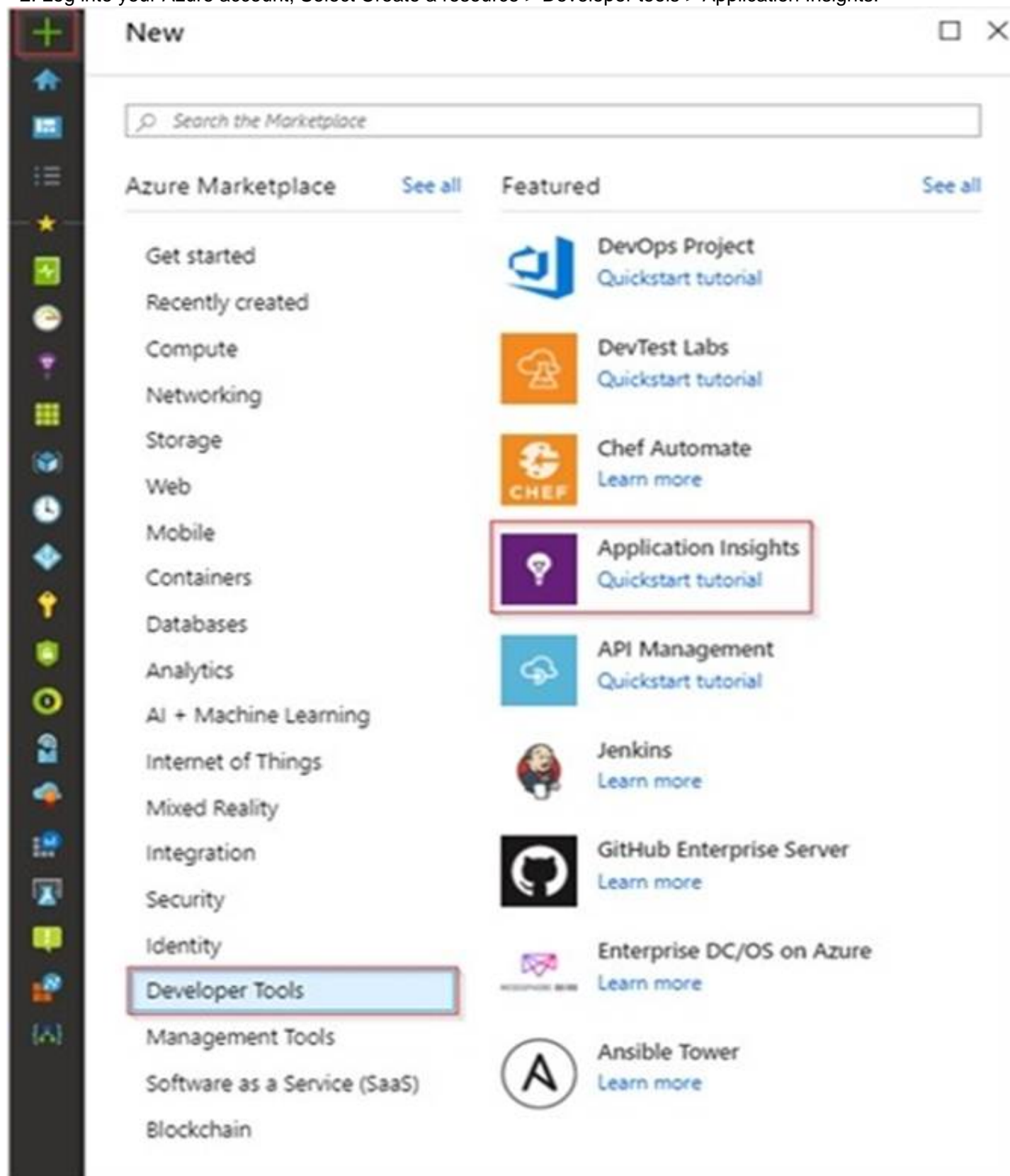
Answer: A

Explanation:

Step 1: Create an instance of Azure Application Insights

* 1. Open Microsoft Azure Portal

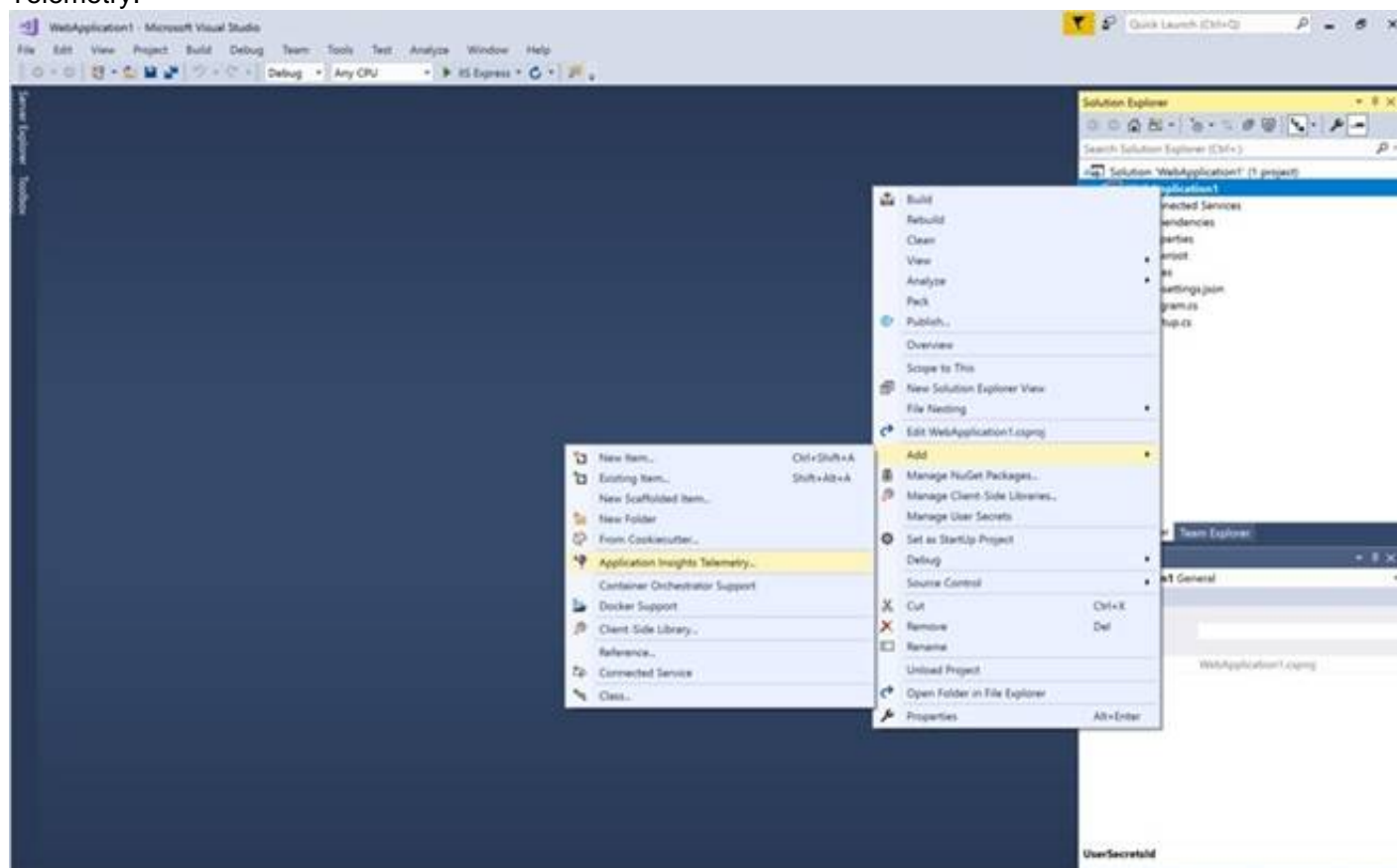
* 2. Log into your Azure account, Select Create a resource > Developer tools > Application Insights.



* 3. Enter the following settings, and then select Review + create. Name: az400-9940427-main

Step 2: Configure App Insights SDK

* 4. Open your ASP.NET Core Web App project in Visual Studio > Right-click on the AppName in the Solution Explorer > Select Add > Application Insights Telemetry.



* 5. Click the Get Started button

* 6. Select your account and subscription > Select the Existing resource you created in the Azure portal > Click Register.

References:

<https://docs.microsoft.com/bs-latn-ba/azure/azure-monitor/learn/dotnetcore-quick-start?view=vs-2017>

NEW QUESTION 3

HOTSPOT - (Topic 4)

HOTSPOT

You need to create deployment files for an Azure Kubernetes Service (AKS) cluster. The deployments must meet the provisioning storage requirements shown in the following table.

| Deployment | Requirement |
|--------------|--|
| Deployment 1 | Use files stored on an SMB-based share from the container's file system. |
| Deployment 2 | Use files on a managed disk from the container's file system. |
| Deployment 3 | Securely access X.509 certificates from the container's file system. |

Which resource type should you use for each deployment? To answer, select the appropriate options in the answer area.

NOTE: Each correct selection is worth one point.

Deployment 1:

▼

azurekeyvault-flexvolume

blobfuse-flexvol

kubernetes.io/azure-disk

kubernetes.io/azure-file

volume.beta.kubernetes.io/storage-provisioner

Deployment 2:

▼

azurekeyvault-flexvolume

blobfuse-flexvol

kubernetes.io/azure-disk

kubernetes.io/azure-file

volume.beta.kubernetes.io/storage-provisioner

Deployment 3:

▼

azurekeyvault-flexvolume

blobfuse-flexvol

kubernetes.io/azure-disk

kubernetes.io/azure-file

volume.beta.kubernetes.io/storage-provisioner

A. Mastered

B. Not Mastered

Answer: A

Explanation:

Deployment 1: Kubernetes.io/azure-file

You can use Azure Files to connect using the Server Message Block (SMB) protocol. Deployment 2: Kubernetes.io/azure-disk

Deployment 3: azurekeyvault-flexvolume

azurekeyvault-flexvolume: Key Vault FlexVolume: Seamlessly integrate your key management systems with Kubernetes.

Secrets, keys, and certificates in a key management system become a volume accessible to pods. Once the volume is mounted, its data is available directly in the container filesystem for your application.

NEW QUESTION 4

- (Topic 4)

You have an Azure subscription that contains an Azure pipeline named Pipeline1 and a GitHub repository named Repo1, Repo1 contains Bicep modules.

Pipeline1 deploys Azure resources by using the Bicep modules.

You need to ensure that all releases comply with Azure Policy before they are deployed to production.

What should you do?

A. Configure a deployment gate for Pipeline' include the Azure DevOps Security and compliance assessment task.

B. Create an Azure DevOps build runs on the creation of a pull request assesses the code for compliance.

C. To Pipeline1, add a step that runs a What If deployment before the deployment step.

D. Configure a deployment gate for Pipeline' that uses Azure Automation to run a What If deployment

Answer: A

NEW QUESTION 5

- (Topic 4)

You have an Azure subscription that contains an Azure Active Directory (Azure AD) tenant. You are configuring a build pipeline in Azure Pipelines that will include a task named

Task1. Task1 will authenticate by using an Azure AD service principal.
Which three values should you configure for Task1? Each correct answer presents part of the solution.
NOTE: Each correct selection is worth one point.

- A. the object ID
- B. the tenant ID
- C. the app ID
- D. the client secret
- E. the subscription ID

Answer: BCD

Explanation:

Reference:

<https://docs.microsoft.com/en-us/azure/devops/pipelines/library/connect-to-azure>

NEW QUESTION 6

DRAG DROP - (Topic 4)

You need to recommend project metrics for dashboards in Azure DevOps.

Which chart widgets should you recommend for each metric? To answer, drag the appropriate chart widgets to the correct metrics. Each chart widget may be used once, more than once, or not at all. You may need to drag the split bar between panes or scroll to view content.

NOTE: Each correct selection is worth one point.

Chart Widgets

Answer Area

Burndown

Cycle Time

Lead Time

Velocity

The elapsed time from the creation of work items to their completion:

The elapsed time to complete work items once they are active:

The remaining work:

- A. Mastered
- B. Not Mastered

Answer: A

Explanation:

Box 1: Lead time

Lead time measures the total time elapsed from the creation of work items to their completion.

Box 2: Cycle time

Cycle time measures the time it takes for your team to complete work items once they begin actively working on them.

Box 3: Burndown

Burndown charts focus on remaining work within a specific time period.

NEW QUESTION 7

- (Topic 4)

Note: This question is part of a series of questions that present the same scenario. Each question in the series contains a unique solution that might meet the stated goals. Some question sets might have more than one correct solution, while others might not have a correct solution.

After you answer a question in this section, you will NOT be able to return to it As a result, these questions will not appear in the review screen.

You need to recommend an integration strategy for the build process of a Java application. The solution must meet the following requirements:

- The builds must access an on-premises dependency management system.
- The build outputs must be stored as Server artifacts m Azure DevOps.
- The source code must be stored in a get repository in Azure DevOps.

Solution: Configure the build pipeline to use a Microsoft-hosted agent pool running the Windows Server 2022 with Visual Studio 2022 image, include the Java Tool installer task in the build pipeline.

Does this meet the goal?

- A. Yes
- B. No

Answer: B

NEW QUESTION 8

- (Topic 4)

You use Azure Pipelines to build and test code projects. You notice an increase in cycle times.

You need to identify whether agent pool exhaustion is causing the issue.

What are two possible ways to achieve this goal? Each correct answer presents a complete solution.

NOTE: Each correct selection is worth one point.

- A. View the Pipeline duration report.

- B. Query the PipelineRun/PipelineRuns endpoint.
- C. View the pool consumption report at the organization level.
- D. Query the TaskAgentPoolSizeSnapshots endpoint

Answer: CD

NEW QUESTION 9

DRAG DROP - (Topic 4)

You have an Azure Repos repository that contains large PSD files. You need to configure Get LFS to manage all the files.

How should you complete the script? To answer, drag the appropriate access levels to the correct groups. Each access level may be used once, more than once, or not at all. You may need to drag the split bar between panes or scroll to view content.

NOTE: Each correct selection is worth one point.

Values

git fetch

git lfs config add "*.psd"

git lfs migrate import --include="*.psd" --everything

git lfs track "*.psd"

git lfs update

git push

Answer Area

...

git lfs install

Value

git add .gitattributes

*

git commit -m "track *.psd files using Git LFS"

Value

Value

...

- A. Mastered
- B. Not Mastered

Answer: A

Explanation:

Values

git fetch

git lfs config add "*.psd"

git lfs migrate import --include="*.psd" --everything

git lfs track "*.psd"

git lfs update

git push

Answer Area

...

git lfs install

git lfs track "*.psd"

git add .gitattributes

*

git commit -m "track *.psd files using Git LFS"

git lfs migrate import --include="*.psd" --everything

git lfs update

...

NEW QUESTION 10

- (Topic 4)

Note: This question is part of a series of questions that present the same scenario. Each question in the series contains a unique solution that might meet the stated goals. Some question sets might have more than one correct solution, while others might not have a correct solution.

After you answer a question in this section, you will NOT be able to return to it. As a result, these questions will not appear in the review screen.

You integrate a cloud-hosted Jenkins server and a new Azure DevOps deployment. You need Azure DevOps to send a notification to Jenkins when a developer commits changes to a branch in Azure Repos.

Solution: You create a service hook subscription that uses the code pushed event. Does this meet the goal?

- A. Yes
- B. NO

Answer: A

Explanation:

You can create a service hook for Azure DevOps Services and TFS with Jenkins.

References:

<https://docs.microsoft.com/en-us/azure/devops/service-hooks/services/jenkins>

NEW QUESTION 10

- (Topic 4)

Your company hosts a web application in Azure. The company uses Azure Pipelines for the build and release management of the application.

Stakeholders report that the past few releases have negatively affected system performance.

You configure alerts in Azure Monitor.

You need to ensure that new releases are only deployed to production if the releases meet defined performance baseline criteria in the staging environment first.

What should you use to prevent the deployment of releases that fail to meet the performance baseline?

- A. an Azure Scheduler job
- B. a trigger
- C. a gate
- D. an Azure function

Answer: C

Explanation:

Scenarios and use cases for gates include:

? Quality validation. Query metrics from tests on the build artifacts such as pass rate or code coverage and deploy only if they are within required thresholds. Use Quality Gates to integrate monitoring into your pre-deployment or post-deployment. This ensures that you are meeting the key health/performance metrics (KPIs) as your applications move from dev to production and any differences in the infrastructure environment or scale is not negatively impacting your KPIs. Note: Gates allow automatic collection of health signals from external services, and then promote the release when all the signals are successful at the same time or stop the deployment on timeout. Typically, gates are used in connection with incident management, problem management, change management, monitoring, and external approval systems.

References:

<https://docs.microsoft.com/en-us/azure/azure-monitor/continuous-monitoring>

<https://docs.microsoft.com/en-us/azure/devops/pipelines/release/approvals/gates?view=azure-devops>

NEW QUESTION 11

- (Topic 4)

Your company uses Azure DevOps for the build pipelines and deployment pipelines of Java based projects. You need to recommend a strategy for managing technical debt.

Which two actions should you include in the recommendation? Each correct answer presents part of the solution

NOTE: Each correct selection is worth one point.

- A. Integrate Azure DevOps and SonarQube.
- B. Integrates Azure DevelOPs and Azure DevTest Labs.
- C. Configure post-deployment approvals in the deployment pipeline.
- D. Configure pre-deployment approvals in the deployment pipeline.

Answer: AC

NEW QUESTION 15

- (Topic 4)

Note: This question is part of a series of questions that present the same scenario. Each question in the series contains a unique solution that might meet the stated goals. Some question sets might have more than one correct solution, while others might not have a correct solution.

After you answer a question in this section, you will NOT be able to return to it. As a result, these questions will not appear in the review screen.

You manage a project in Azure DevOps.

You need to prevent the configuration of the project from changing over time. Solution: Perform a Subscription Health scan when packages are created. Does this meet the goal?

- A. Yes
- B. No

Answer: B

Explanation:

Instead implement Continuous Assurance for the project.

Note: The Subscription Security health check features in AzSK contains a set of scripts that examines a subscription and flags off security issues, misconfigurations or obsolete artifacts/settings which can put your subscription at higher risk.

Reference:

<https://azsk.azurewebsites.net/04-Continous-Assurance/Readme.html>

NEW QUESTION 17

- (Topic 4)

Note: This question is part of a series of questions that present the same scenario. Each question in the series contains a unique solution that might meet the stated goals. Some question sets might have more than one correct solution, while others might not have a correct solution.

After you answer a question in this section, you will NOT be able to return to it. As a result, these questions will not appear in the review screen.

The lead developer at your company reports that adding new application features takes longer than expected due to a large accumulated technical debt.

You need to recommend changes to reduce the accumulated technical debt.

Solution: You recommend increasing the code duplication. Does this meet the goal?

- A. Yes
- B. No

Answer: B

Explanation:

Instead reduce the code complexity. Reference:

<https://dzone.com/articles/fight-through-the-pain-how-to-deal-with-technical>

NEW QUESTION 20

- (Topic 4)

Note: This question is part of a series of questions that present the same scenario. Each question in the series contains a unique solution that might meet the stated goals. Some question sets might have more than one correct solution, while others might not have a correct solution.

After you answer a question in this section, you will NOT be able to return to it. As a result, these questions will not appear in the review screen.

You need to recommend an integration strategy for the build process of a Java application.

The solution must

meet the following requirements:

- ? The builds must access an on-premises dependency management system.
- ? The build outputs must be stored as Server artifacts in Azure DevOps.
- ? The source code must be stored in a Git repository in Azure DevOps.

Solution: Configure an Octopus Tentacle on an on-premises machine. Use the Package Application task in the build pipeline.

Does this meet the goal?

- A. Yes

B. No

Answer: A

Explanation:

Octopus Deploy is an automated deployment server that makes it easy to automate deployment of ASP.NET web applications, Java applications, NodeJS application and custom scripts to multiple environments.

Octopus can be installed on various platforms including Windows, Mac and Linux. It can also be integrated with most version control tools including VSTS and GIT. When you deploy software to Windows servers, you need to install Tentacle, a lightweight agent service, on your Windows servers so they can communicate with the Octopus server.

When defining your deployment process, the most common step type will be a package step. This step deploys your packaged application onto one or more deployment targets.

When deploying a package you will need to select the machine role that the package will be deployed to.

References:

<https://octopus.com/docs/deployment-examples/package-deployments> <https://explore.emtecinc.com/blog/octopus-for-automated-deployment-in-devops-models>

NEW QUESTION 23

- (Topic 4)

Note: This Question Is part of a series of questions that present the same scenario. Each question in the series contains a unique solution that might meet the stated goals. Some question sets might have more than one correct solution, while others might not have a correct solution.

After you answer a question in this section, you will NOT be able to return to it. As a result these questions will not appear in the review screen.

You company has a prefect in Azure DevOps for a new web application.

You need to ensure that when code is checked in, a build runs automatically.

Solution: From the Triggers tab of the build pipeline, you selected Batch changes while a build is in progress

Does this meet the goal?

A. Yes

B. No

Answer: B

NEW QUESTION 27

- (Topic 4)

Note: This question is part of a series of questions that present the same scenario. Each question in the series contains a unique solution that might meet the stated goals. Some question sets might have more than one correct solution, while others might not have a correct solution.

After you answer a question in this section, you will NOT be able to return to it. As a result, these questions will not appear in the review screen.

You have an approval process that contains a condition. The condition requires that releases be approved by a team leader before they are deployed.

You have a policy stating that approvals must occur within eight hours.

You discover that deployment fail if the approvals take longer than two hours.

You need to ensure that the deployments only fail if the approvals take longer than eight hours.

Solution: From Pre-deployment conditions, you modify the Time between re-evaluation of gates option.

Does this meet the goal?

A. Yes

B. No

Answer: B

Explanation:

References: <https://docs.microsoft.com/en-us/azure/devops/pipelines/release/approvals/gates>

NEW QUESTION 28

- (Topic 4)

You have a pipeline named Pipeline1 in Azure Pipelines.

You need to create a service connection to enable Pipeline1 to download a public container image.

Which type of service connection should you create?

A. a Docker host

B. Azure Service Fabric

C. Azure Kubernetes Service (AKS)

D. a Docker registry

Answer: D

NEW QUESTION 31

- (Topic 4)

You have a project in Azure DevOps named Project that contains a Kanban board named Board1.

You create a Microsoft Teams channel and add the Azure Boards app to the channel. You need to ensure that users can create work items in Board1 from Microsoft Teams. Which command should you run?

A. @azure boards sign in

B. @azure boards link

C. @azure boards create

D. @azure boards subscriptions

Answer: B

NEW QUESTION 33

DRAG DROP - (Topic 4)

Your company has a project in Azure DevOps.

You plan to create a release pipeline that will deploy resources by using Azure Resource Manager templates. The templates will reference secrets stored in Azure Key Vault.

You need to recommend a solution for accessing the secrets stored in the key vault during deployments. The solution must use the principle of least privilege.

What should you include in the recommendation? To answer, drag the appropriate configurations to the correct targets. Each configuration may be used once, more than once, or not at all. You may need to drag the split bar between panes or scroll to view content.

NOTE: Each correct selection is worth one point.

| Configurations | Answer Area |
|----------------------------------|--|
| an Azure Key Vault access policy | Restrict access to delete the key vault: <input type="text"/> |
| a personal access token (PAT) | Restrict access to the secrets in Key Vault by using: <input type="text"/> |
| RBAC | |

- A. Mastered
- B. Not Mastered

Answer: A

Explanation:

Box 1: RBAC

Management plane access control uses RBAC.

The management plane consists of operations that affect the key vault itself, such as:

- ? Creating or deleting a key vault.
- ? Getting a list of vaults in a subscription.
- ? Retrieving Key Vault properties (such as SKU and tags).
- ? Setting Key Vault access policies that control user and application access to keys and secrets.

Box 2: RBAC

References:

<https://docs.microsoft.com/en-us/azure/azure-resource-manager/resource-manager-tutorial-use-key-vault>

NEW QUESTION 36

- (Topic 4)

Note: This question is part of a series of questions that present the same scenario. Each question in the series contains a unique solution that might meet the stated goals. Some question sets might have more than one correct solution, while others might not have a correct solution.

After you answer a question in this section, you will NOT be able to return to it. As a result, these questions will not appear in the review screen.

You have an approval process that contains a condition. The condition requires that releases be approved by a team leader before they are deployed.

You have a policy stating that approvals must occur within eight hours.

You discover that deployment fail if the approvals take longer than two hours.

You need to ensure that the deployments only fail if the approvals take longer than eight hours.

Solution: From Post-deployment conditions, you modify the Timeout setting for post- deployment approvals.

Does this meet the goal?

- A. Yes
- B. No

Answer: B

Explanation:

Use Pre-deployments conditions instead. Use a gate instead of an approval instead.

References:

<https://docs.microsoft.com/en-us/azure/devops/pipelines/release/approvals/gates>

NEW QUESTION 41

- (Topic 4)

You have a web app hosted on Azure App Service. The web app stores data in an Azure SQL database.

You need to generate an alert when there are 10,000 simultaneous connections to the database. The solution must minimize deve4opment effort.

Which option should you select in the Diagnostics settings of the database?

- A. Send to Log Analytics
- B. Archive to m storage account
- C. Stream to an event hub

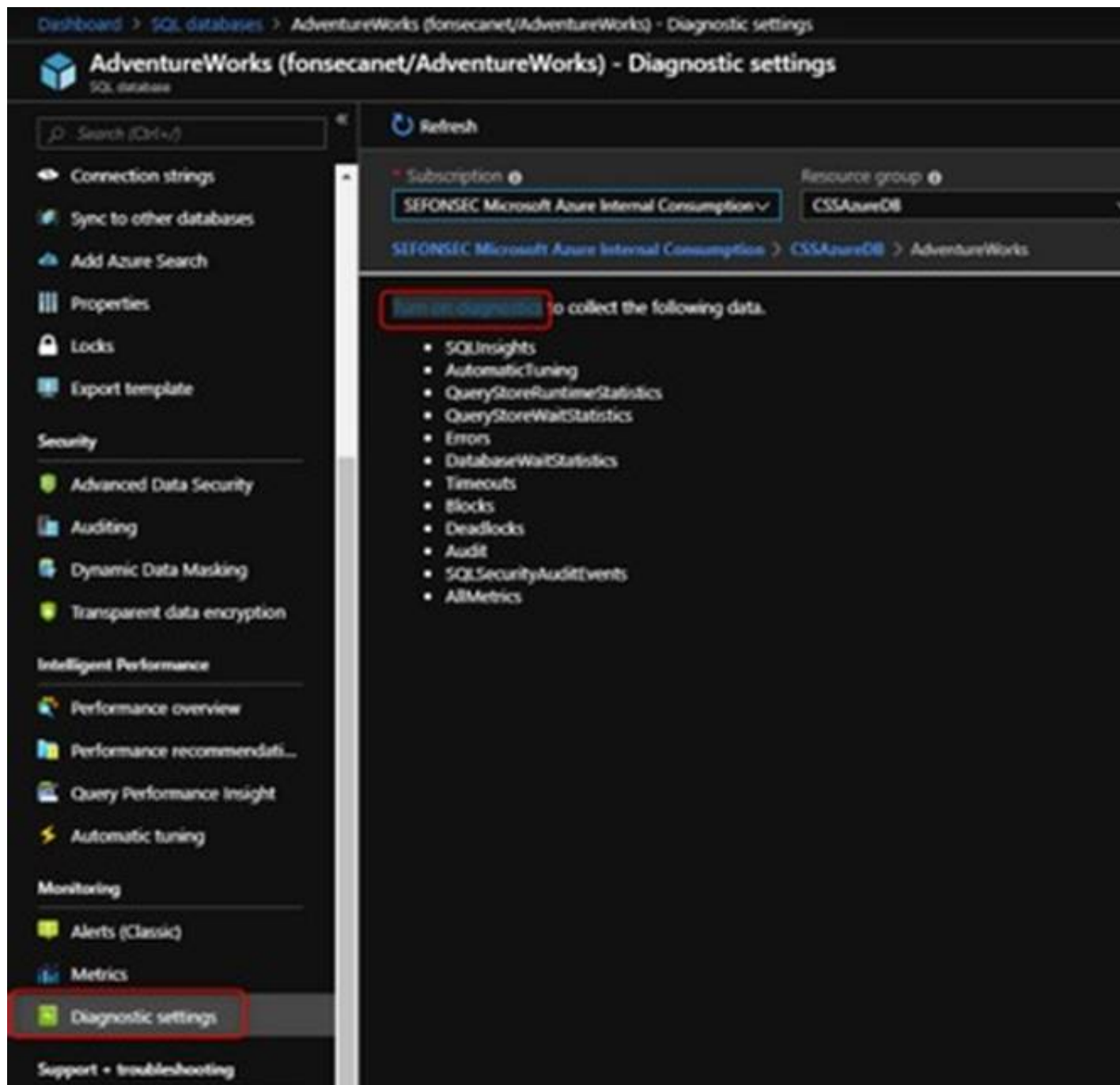
Answer: A

Explanation:

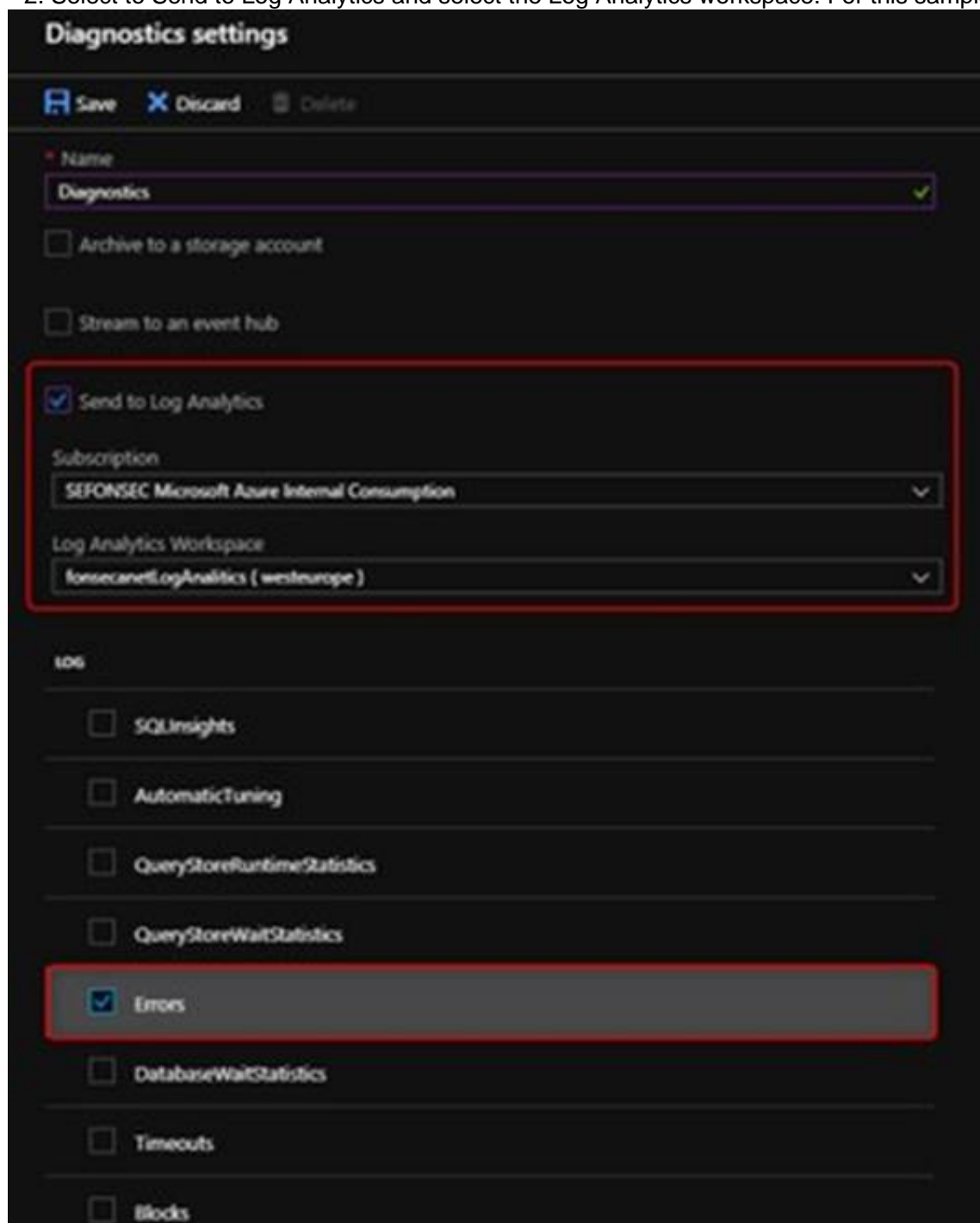
ENABLE DIAGNOSTICS TO LOG ANALYTICS

This configuration is done PER DATABASE

* 1. Click on Diagnostics Settings and then Turn On Diagnostics



* 2. Select to Send to Log Analytics and select the Log Analytics workspace. For this sample I will selected only Errors



Reference:

<https://techcommunity.microsoft.com/t5/azure-database-support-blog/azure-sql-db-and-log-analytics-better-together-part-1/ba-p/794833>

NEW QUESTION 46

- (Topic 4)

You need to recommend an integration strategy for the build process of a Java application. The solution must meet the following requirements:

- The builds must access an on-premises dependency management system.
- The build outputs must be stored as Server artifacts in Azure DevOps.
- The source code must be stored in a Git repository in Azure DevOps.

Solution: Configure the build pipeline to use a Microsoft-hosted agent pool running a Linux image. Include the Java Tool Installer task in the build pipeline.

Does this meet the goal?

- A. Yes
 B. No

Answer: B

Explanation:

To run your jobs, you'll need at least one agent. A Linux agent can build and deploy different kinds of apps, including Java and Android apps.

If your pipelines are in Azure Pipelines and a Microsoft-hosted agent meets your needs, you can skip setting up a private Linux agent.

The Azure Pipelines agent pool offers several virtual machine images to choose from, each including a broad range of tools and software. We support Ubuntu, Red Hat, and CentOS.

Reference:

<https://docs.microsoft.com/en-us/azure/devops/pipelines/agents/v2-linux?view=azure-devops>

<https://docs.microsoft.com/en-us/azure/devops/pipelines/agents/hosted?view=azure-devops&tabs=yaml>

NEW QUESTION 51

DRAG DROP - (Topic 4)

You need to recommend a solution for deploying charts by using Helm and Tiller to Azure Kubernetes Service (AKS) in an RBAC-enabled cluster.

Which three commands should you recommend be run in sequence? To answer, move the appropriate commands from the list of commands to the answer area and arrange them in the correct order.

| Commands | Answer Area |
|-----------------|-------------|
| helm install | |
| kubectl create | |
| helm completion | |
| helm init | |
| helm serve | |

- A. Mastered
 B. Not Mastered

Answer: A

Explanation:

Step 1: Kubectl create

You can add a service account to Tiller using the --service-account <NAME> flag while you're configuring Helm (step 2 below). As a prerequisite, you'll have to create a role binding which specifies a role and a service account name that have been set up in advance.

Example: Service account with cluster-admin role

\$ kubectl create -f rbac-config.yaml serviceaccount "tiller" created clusterrolebinding "tiller" created

\$ helm init --service-account tiller

Step 2: helm init

To deploy a basic Tiller into an AKS cluster, use the helm init command.

Step 3: helm install

To install charts with Helm, use the helm install command and specify the name of the chart to install.

References:

<https://docs.microsoft.com/en-us/azure/aks/kubernetes-helm> https://docs.helm.sh/using_helm/#tiller-namespaces-and-rbac

NEW QUESTION 53

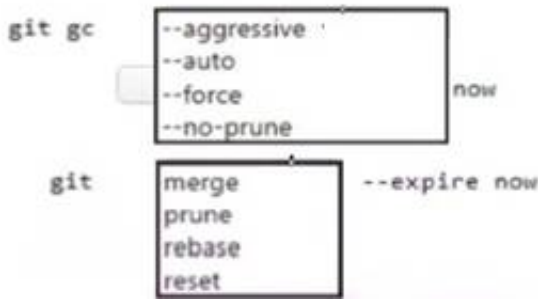
HOTSPOT - (Topic 4)

You manage the Git repository for a large enterprise application. You need to minimize the data size of the repository.

How should you complete the commands? To answer, select the appropriate options in the answer area.

NOTE: Each correct selection is worth one point.

Answer Area



- A. Mastered
- B. Not Mastered

Answer: A

Explanation:

Box 1: --aggressive
Cleanup unnecessary files and optimize the local repository: get gc --aggressive
Box 2: prune
Prune all unreachable objects from the object database: git prune

NEW QUESTION 58

HOTSPOT - (Topic 4)
You currently use JIRA, Jenkins, and Octopus as part of your DevOps processes. You plan to use Azure DevOps to replace these tools. Which Azure DevOps service should you use to replace each tool? To answer, select the appropriate options in the answer area.
NOTE: Each correct selection is worth one point.

JIRA: ▼

- Boards
- Build pipelines
- Release pipelines
- Repos

Jenkins: ▼

- Boards
- Build pipelines
- Release pipelines
- Repos

Octopus: ▼

- Boards
- Build pipelines
- Release pipelines
- Repos

- A. Mastered
- B. Not Mastered

Answer: A

Explanation:

JIRA- BoardJenkins- Build PipelinesOctopus- Release pipelines

NEW QUESTION 59

- (Topic 4)
You have an Azure virtual machine that is monitored by using Azure Monitor. The virtual machine has the Azure Log Analytics agent installed. You plan to deploy the Service Map solution from Azure Marketplace. What should you deploy to the virtual machine to support the Service Map solution?

- A. the Telegraf agent
- B. the Azure Monitor agent
- C. the Dependency agent
- D. the Windows Azure diagnostics extension (WAD)

Answer: C

NEW QUESTION 63

- (Topic 4)
Note: This question is part of a series of questions that present the same scenario. Each question in the series contains a unique solution that might meet the stated goals. Some question sets might have more than one correct solution, while others might not have a correct solution.

After you answer a question in this section, you will NOT be able to return to it. As a result, these questions will not appear in the review screen.
 You need to recommend an integration strategy for the build process of a Java application. The solution must meet the following requirements:

- ? The builds must access an on-premises dependency management system.
- ? The build outputs must be stored as Server artifacts in Azure DevOps.
- ? The source code must be stored in a Git repository in Azure DevOps.

Solution: Install and configure a self-hosted build agent on an on-premises machine. Configure the build pipeline to use the Default agent pool. Include the Java Tool Installer task in the build pipeline.

Does this meet the goal?

- A. Yes
- B. No

Answer: A

Explanation:

Instead use Octopus Tentacle.

References:

<https://explore.emtecinc.com/blog/octopus-for-automated-deployment-in-devops-models>

NEW QUESTION 67

- (Topic 4)

Note: This question is part of a series of questions that present the same scenario. Each question in the series contains a unique solution that might meet the stated goals. Some question sets might have more than one correct solution, while others might not have a correct solution.

After you answer a question in this section, you will NOT be able to return to it as a result, these questions will not appear in the review screen.

You have an Azure pipeline that is used to deploy a web app. The pipeline includes a test suite named TestSuite1. TestSuite1 is used to validate the operations of the web app.

TestSuite1 fails intermittently.

You identify that the failures are unrelated to changes in the source code and execution environment.

You need to minimize troubleshooting effort for the TestSuite1 failures. Solution: You enable Test Impact Analysis (TIA).

Does this meet the goal?

- A. Yes
- B. No

Answer: B

NEW QUESTION 71

HOTSPOT - (Topic 4)

You plan to use Desired State Configuration (DSC) to maintain the configuration state of virtual machines that run Windows Server.

You need to perform the following:

- ? Install Internet Information Services (IIS) on the virtual machines.
- ? Update the default home page of the IIS web server.

How should you configure the DSC configuration file? To answer, select the appropriate options in the answer area.

NOTE: Each correct selection is worth one point.

Answer Area

```
Configuration WebServerConfig {
  Import-DscResource -ModuleName PsDesiredStateConfiguration
  Node 'localhost' {
```

▼
WebServer {

Service
 WindowsFeature
 WindowsOptionalFeature
 WindowsProcess

Ensure = "Present"
 Name = "Web-Server"

```
}

  ▼ DefaultHomePage {
    Archive
    File
    Package
    Script

    Ensure = 'Present'
    SourcePath = '\\server1
  \DSCResources\web\index.htm'
    DestinationPath = 'c:\inetpub\wwwroot'
  }
}
```

- A. Mastered
- B. Not Mastered

Answer: A

Explanation:

See the answer in image

Box 1: Windows Feature Example:

```
Configuration Website Test {
```

```
# Import the module that contains the resources we're using.
```

```
Import-Disc Resource -Module Name Ps Desired State Configuration
```

```
# The Node statement specifies which targets this configuration will be applied to. Node 'localhost' {
```

```
# The first resource block ensures that the Web-Server (IIS) feature is enabled. Windows Feature Web Server {
```

```
Ensure = "Present" Name = "Web-Server"
```

```
}
```

Box 2: File Example continued:

```
# The second resource block ensures that the website content copied to the website root folder.
```

```
File Website Content { Ensure = 'Present'
```

```
Source Path = 'c:\test\index.htm' Destination Path = 'c:\inetpub \wwwroot'
```

```
}
```

NEW QUESTION 75

- (Topic 4)

You have an Azure DevOps project named Project1 and an Azure subscription named Sub1. Sub1 contains an Azure SQL database named DB1.

You need to create a release pipeline that uses the Azure SQL Database Deployment task to update DB1.

Which artifact should you deploy?

- A. a BACPAC
- B. a DACPAC
- C. an LDF file
- D. an MDF file

Answer: B

Explanation:

Use Azure SQL Database Deployment task in a build or release pipeline to deploy to Azure SQL DB using a DACPAC or run scripts using SQLCMD.

Reference:

<https://docs.microsoft.com/en-us/azure/devops/pipelines/tasks/deploy/sql-azure-dacpac-deployment>

NEW QUESTION 77

- (Topic 4)

Note: This question is part of a series of questions that present the same scenario. Each question in the series contains a unique solution that might meet the stated goals. Some question sets might have more than one correct solution, while others might not have a correct solution.

After you answer a question in this section, you will NOT be able to return to it. As a result, these questions will not appear in the review screen.

The lead developer at your company reports that adding new application features takes

longer than expected due to a large accumulated technical debt.

You need to recommend changes to reduce the accumulated technical debt. Solution: You recommend reducing the code coupling and the dependency cycles?

Does this meet the goal?

- A. Yes
- B. No

Answer: B

Explanation:

Instead reduce the code complexity.

Note: Technical debt is the accumulation of sub-optimal technical decisions made over the lifetime of an application. Eventually, it gets harder and harder to change things: it's the 'sand in the gears' that sees IT initiatives grind to a halt.

Reference:

<https://dzone.com/articles/fight-through-the-pain-how-to-deal-with-technical> <https://www.devopsgroup.com/blog/five-ways-devops-helps-with-technical-debt/>

NEW QUESTION 82

HOTSPOT - (Topic 4)

You have an Azure subscription that contains two resource groups named Contoso RG and Contoso Dev, an Azure data factory named Contoso Data Factory, and a release pipeline

in Azure Pipelines named Pipeline1.

You plan to deploy Contoso Data Factory to ContosoRG by using Pipeline1.

You add the Azure Resource Manager (ARM) template deployment task shown the following exhibit.

ARM template deployment ⓘ View YAML Remove

Task version 3.*

Display name *
 Deploy the Contoso Data Factory

Azure Details ^

Deployment scope * ⓘ
 Resource Group

Azure Resource Manager connection * ⓘ | Manage ⓘ
 Microsoft Azure Sponsorship ⓘ

Subscription * ⓘ
 Microsoft Azure Sponsorship ⓘ

Action * ⓘ
 Create or update resource group

Resource group * ⓘ
 ContosoRG ⓘ

Location * ⓘ
 East US ⓘ

Template ^

Template location *
 Linked artifact

Template * ⓘ
 \$(System.DefaultWorkingDirectory)/_Contoso-DataFactory-CI ...

Template parameters ⓘ
 ...

Override template parameters ⓘ
 ...

Deployment mode * ⓘ
 Complete

The [answer choice] setting must be changed to prevent the modification of existing databases and web apps in ContosoRG.

Pipeline1 will retrieve the ARM template from the [answer choice].

- A. Mastered
- B. Not Mastered

Answer: A

Explanation:

Deployment Mode
 Location specified in the Linked artifact variable

NEW QUESTION 87

HOTSPOT - (Topic 4)

Your company uses GitHub for source control. GitHub repositories store source code and store process documentation. The process documentation is saved as Microsoft Word documents that contain simple flow charts stored as .bmp files.

You need to optimize the integration and versioning of the process documentation and the flow charts. The solution must meet the following requirements:

- Store documents as plain text.
- Minimize the number of files that must be maintained.
- Simplify the modification, merging, and reuse of flow charts.
- Simplify the modification, merging, and reuse of documents.

What should you include in the solution? To answer, select the appropriate options in the answer area. NOTE: Each correct selection is worth one point.

Convert the .docx files to:

Convert the flow charts to:

- A. Mastered
- B. Not Mastered

Answer: A

Explanation:

Box 1: Markdown (.md)
Github understands several text formats, including .txt and .md. .md stands for a file written in Markdown.
Box 2: Mermaid diagrams
Mermaid lets you create diagrams and visualizations using text and code.
It is a Javascript based diagramming and charting tool that renders Markdown-inspired text definitions to create and modify diagrams dynamically.

NEW QUESTION 91

HOTSPOT - (Topic 4)
You have an Azure web app named webapp1 that uses the .NET Core runtime slack. You have an Azure Application insights resource named AppInsights1 that collects telemetry data generated by webapp1
You plan to deploy webapp1 by using an Azure DevOps pipeline.
You need to modify the sampling rate of the telemetry data processed by AppInsights1 without having to redeploy webapp1 after each modification.
What should you do? To answer, select the appropriate options in the answer area. NOTE: Each correct selection is worth one point.

Answer Area

From the code repository of webapp1:

Modify ApplicationInsights.config.

Disable adaptive sampling.

Enable fixed-rate sampling.

Modify ApplicationInsights.config.

From AppInsights1:

Modify the Usage and estimated costs settings.

Configure Continuous export.

Configure the Smart Detection settings.

Modify the Usage and estimated costs settings.

- A. Mastered
- B. Not Mastered

Answer: A

Explanation:

Answer Area

From the code repository of webapp1:

Modify ApplicationInsights.config.

Disable adaptive sampling.

Enable fixed-rate sampling.

Modify ApplicationInsights.config.

From AppInsights1:

Modify the Usage and estimated costs settings.

Configure Continuous export.

Configure the Smart Detection settings.

Modify the Usage and estimated costs settings.

NEW QUESTION 94

HOTSPOT - (Topic 4)
You have a project Azure DevOps.
You plan to create a build pipeline that will deploy resources by using Azure Resource Manager templates. The templates will reference secretes stored in Azure Key Vault.
You need to ensure that you can dynamically generate the resource ID of the key vault during template deployment.
What should you include in the template? To answer, select eh appropriate options in the answer area.
NOTE: Each correct selection is worth one point.


```

"resources": [
{
  "apiversion": "2018-05-01",
  "name" : "secrets",
  "type": 

|                                         |   |
|-----------------------------------------|---|
|                                         | ▼ |
| "Microsoft.KeyVault/vaults",            |   |
| "Microsoft.Resources/deployment".       |   |
| "Microsoft.Subscription/subscriptions". |   |


  "properties": {
    "mode" : "Incremental",
    

|                |   |
|----------------|---|
|                | ▼ |
| "deployment"   |   |
| "template"     |   |
| "templateLink" |   |

 : {
contentVersion" : "1.0.0.0",
  "uri" : "[uri(parameters('_artifactsLocation'),
concat('./nested/sqlserver.json',
parameters('_artifactsLocationSasToken')))]"
},
"parameters": {
  "secret": {
    "reference": {
      "keyVault": {
        "id": "[resourceId(parameters('vaultSubscription'),
parameters('vaultResourceGroupName'),
'Microsoft.KeyVault/vaults',
parameters('vaultName'))]"
      },
      "secretName": "[parameters('secretName')]"
    }
  }
}
],

```

- A. Mastered
- B. Not Mastered

Answer: A

Explanation:

```

    "resources": [
    {
        "apiversion": "2018-05-01",
        "name" : "secrets",
        "type": 
        {
            "Microsoft.KeyVault/vaults",
            "Microsoft.Resources/deployment",
            "Microsoft.Subscription/subscriptions".
        }
        "properties":{
            "mode" : "Incremental",
            :{
                "deployment"
                "template"
                "templateLink"
            }
        }
    },
    {
        "contentVersion" : "1.0.0.0",
        "uri" : "[uri(parameters('_artifactsLocation'),
        concat('./nested/sqlserver.json',
        parameters('_artifactsLocationSasToken')))]"
    },
    "parameters":{
        "secret":{
            "reference":{
                "keyVault":{
                    "id": "[resourceId(parameters('vaultSubscription'),
                    parameters('vaultResourceGroupName'),
                    'Microsoft.KeyVault/vaults',
                    parameters('vaultName'))]"
                },
                "secretName": "[parameters('secretName')]"
            }
        }
    }
}
],

```

NEW QUESTION 95

- (Topic 4)

You need to execute inline testing of an Azure DevOps pipeline that uses a Docker deployment model. The solution must prevent the results from being published to the pipeline.

What should you use for the inline testing?

- A. a single stage Dockerfile
- B. an Azure Kubernetes Service (AKS) pod
- C. a multi-stage Dockerfile
- D. a Docker Compose file

Answer: D

Explanation:

"Build and test with a multi-stage Dockerfile: build and tests execute inside the container using a multi-stage Docker file, as such test results are not published back to the pipeline." <https://docs.microsoft.com/en-us/azure/devops/pipelines/tasks/test/publish-test-results?view=azure-devops&tabs=trx%2Cyaml>

NEW QUESTION 98

- (Topic 4)

You manage source code control and versioning by using GitHub.

You need to ensure that a PowerShell script is executed automatically before rebase operations are performed.

What should you use?

- A. a package
- B. GitHub Copilot
- C. a webbook
- D. a gist

Answer: C

NEW QUESTION 101

- (Topic 4)

Your company plans to use an agile approach to software development.

You need to recommend an application to provide communication between members of the development team who work in locations around the world. The applications must meet the following requirements:

? Provide the ability to isolate the members of different project teams into separate communication channels and to keep a history of the chats within those channels.

? Be available on Windows 10, Mac OS, iOS, and Android operating systems.

? Provide the ability to add external contractors and suppliers to projects.

? Integrate directly with Azure DevOps.

What should you recommend?

A. Microsoft Project

B. Bamboo

C. Microsoft Lync

D. Microsoft Teams

Answer: D

Explanation:

? Within each team, users can create different channels to organize their communications by topic. Each channel can include a couple of users or scale to thousands of users.

? Microsoft Teams works on Android, iOS, Mac and Windows systems and devices.

It also works in Chrome, Firefox, Internet Explorer 11 and Microsoft Edge web browsers.

? The guest-access feature in Microsoft Teams allows users to invite people outside their organizations to join internal channels for messaging, meetings and file sharing. This capability helps to facilitate business-to-business project management.

? Teams integrates with Azure DevOps.

References: <https://searchunifiedcommunications.techtarget.com/definition/Microsoft-Teams>

NEW QUESTION 105

- (Topic 4)

Your company uses Azure Artifacts for package management.

You need to configure an upstream source in Azure Artifacts for Python packages. Which repository type should you use as an upstream source?

A. PyPI

B. npmjs.org

C. Maven Central

D. third-party trusted Python

Answer: A

Explanation:

Get started with Python packages in Azure Artifacts Create a feed

? Select Artifacts (in the left navigation of your Azure DevOps project).

? On the Artifacts page, select Create Feed.

? In the Create new feed dialog box:

? In the Name field, give the feed a name.

PyPI is the default repository name for twine, which is a tool for publishing Python

packages. Reference:

<https://docs.microsoft.com/en-us/azure/devops/artifacts/quickstarts/python-packages>

NEW QUESTION 108

- (Topic 4)

Note: This question is part of a series of questions that present the same scenario. Each question in the series contains a unique solution that might meet the stated goals. Some question sets might have more than one correct solution, while others might not have a correct solution.

After you answer a question in this section, you will NOT be able to return to it. As a result, these questions will not appear in the review screen.

You manage a project in Azure DevOps.

You need to prevent the configuration of the project from changing over time. Solution: Add a code coverage step to the build pipelines.

Does this meet the goal?

A. Yes

B. No

Answer: B

Explanation:

Instead implement Continuous Assurance for the project.

Reference:

<https://azsk.azurewebsites.net/04-Continuous-Assurance/Readme.html>

NEW QUESTION 111

HOTSPOT - (Topic 4)

You have a project in Azure DevOps that contains a release pipeline. The pipeline contains two stages named QA and Prod. QA deploys code to an Azure web app named webapp1. Prod deploys code to an Azure web app named webapp2.

You need to ensure that code deployments to webapp2 are blocked if Azure Application Insights generates Failed requests alerts following the deployment of new code to webapp1.

What should you do for each stage? To answer, select the appropriate options in the answer area.

NOTE: Each correct selection is worth one point.

QA:

Add a task to configure alert rules in Application Insights.
 Configure a gate in the pre-deployment conditions.
 Configure an auto-redeploy trigger in the post-deployment conditions
 Configure a post-deployment approval in the post-deployment conditions

Prod:

Add a task to configure an alert rule in Application Insights.
 Configure a gate in the pre-deployment conditions.
 Configure a trigger in the pre-deployment conditions.
 Configure the Deployment queue settings in the pre-deployment conditions.

- A. Mastered
 B. Not Mastered

Answer: A

Explanation:

QA:

Add a task to configure alert rules in Application Insights.
 Configure a gate in the pre-deployment conditions.
 Configure an auto-redeploy trigger in the post-deployment conditions
 Configure a post-deployment approval in the post-deployment conditions

Prod:

Add a task to configure an alert rule in Application Insights.
 Configure a gate in the pre-deployment conditions.
 Configure a trigger in the pre-deployment conditions.
 Configure the Deployment queue settings in the pre-deployment conditions.

NEW QUESTION 115

HOTSPOT - (Topic 4)

You manage build and release pipelines by using Azure DevOps. Your entire managed environment resides in Azure. You need to configure a service endpoint for accessing Azure Key Vault secrets. The solution must meet the following requirements:

? Ensure that the secrets are retrieved by Azure DevOps.

? Avoid persisting credentials and tokens in Azure DevOps.

How should you configure the service endpoint? To answer, select the appropriate options in the answer area.

NOTE: Each correct selection is worth one point.

Service connection type:

Azure Resource Manager
 Generic service
 Team Foundation Server / Azure Pipelines service connection

Authentication/authorization method for the connection:

Azure Active Directory OAuth 2.0
 Grant authorization
 Managed Service Identity Authentication

- A. Mastered
 B. Not Mastered

Answer: A

Explanation:

Box 1: Azure Pipelines service connection

Box 2: Managed Service Identity Authentication

The managed identities for Azure resources feature in Azure Active Directory (Azure AD) provides Azure services with an automatically managed identity in Azure AD. You can use the identity to authenticate to any service that supports Azure AD authentication, including Key Vault, without any credentials in your code.

NEW QUESTION 120

- (Topic 4)

You have an existing build pipeline in Azure Pipelines.

You need to use incremental builds without purging the environment between pipeline executions.

What should you use?

- A. a File Transform task
- B. a self-hosted agent
- C. Microsoft-hosted parallel jobs

Answer: B

Explanation:

When you run a pipeline on a self-hosted agent, by default, none of the subdirectories are cleaned in between two consecutive runs. As a result, you can do incremental builds and deployments, provided that tasks are implemented to make use of that. You can override this behavior using the workspace setting on the job.

Reference:

<https://docs.microsoft.com/en-us/azure/devops/pipelines/process/phases>

NEW QUESTION 123

- (Topic 4)

You have an Azure Automation account that contains a webbook. The webbook is used to configure the application infrastructure of an Azure subscription.

You have a project in Azure DevOps named Project1. Project1 contains a repository that stores code for the webbook.

You need to ensure that every committed change to the code will update automatically and publish the webbook to Azure Automation.

What should you configure?

- A. the Connections settings for the Automation account
- B. the Service hooks settings for Project1
- C. the Source control settings for the Automation account
- D. the Service connections settings for Project1

Answer: C

NEW QUESTION 127

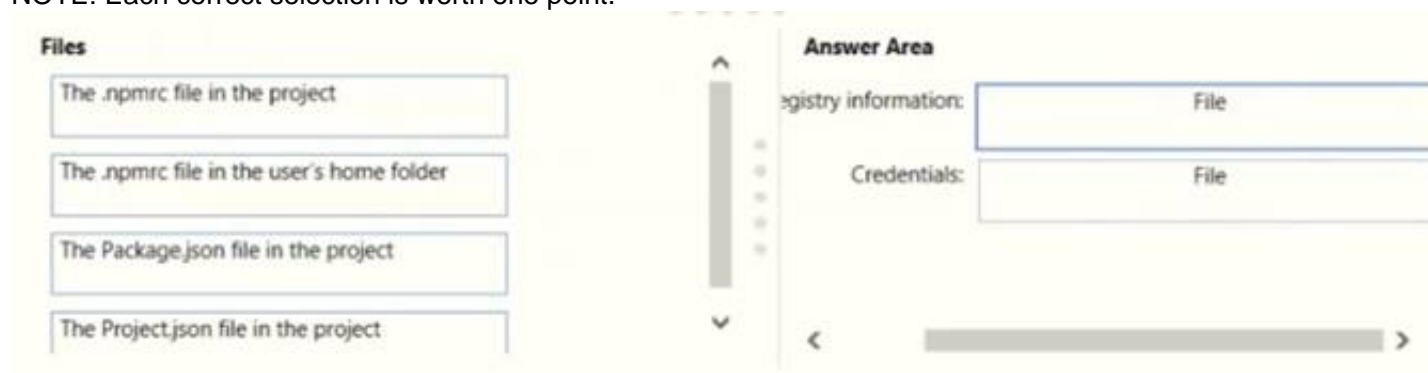
DRAG DROP - (Topic 4)

You are implementing a package management solution for a Node.js application by using Azure Artifacts.

You need to configure the development environment to connect to the package repository. The solution must minimize the likelihood that credentials will be leaked.

Which file should you use to configure each connection? To answer, drag the appropriate files to the correct connections. Each file may be used once, more than once, or not at all. You may need to drag the split bar between panes or scroll to view content

NOTE: Each correct selection is worth one point.



The screenshot shows a configuration interface for Azure Artifacts. On the left, under the heading "Files", there is a list of four items: "The .npmrc file in the project", "The .npmrc file in the user's home folder", "The Package.json file in the project", and "The Project.json file in the project". On the right, under the heading "Answer Area", there are two sections: "Registry information:" and "Credentials:". Each section has a dropdown menu with "File" selected. Below these sections is a horizontal scrollbar.

- A. Mastered
- B. Not Mastered

Answer: A

Explanation:

All Azure Artifacts feeds require authentication, so you'll need to store credentials for the feed before you can install or publish packages. npm uses .npmrc configuration files to store feed URLs and credentials. Azure DevOps Services recommends using two .npmrc files.

Feed registry information: The .npmrc file in the project

One .npmrc should live at the root of your git repo adjacent to your project's package.json. It should contain a "registry" line for your feed and it should not contain credentials since it will be checked into git.

Credentials: The .npmrc file in the user's home folder

On your development machine, you will also have a .npmrc in \$home for Linux or Mac systems or \$env.HOME for win systems. This .npmrc should contain credentials for all of the registries that you need to connect to. The NPM client will look at your project's .npmrc, discover the registry, and fetch matching credentials from \$home/.npmrc or \$env.HOME/.npmrc.

References:

<https://docs.microsoft.com/en-us/azure/devops/artifacts/npm/npmrc?view=azure-devops&tabs=windows>

NEW QUESTION 132

- (Topic 4)

Your company uses Service Now for incident management. You develop an application that runs on Azure.

The company needs to generate a ticket in Service Now when the application fails to authenticate.

Which Azure Log Analytics solution should you use?

- A. Application Insights Connector
- B. Automation & Control
- C. IT Service Management Connector (ITSM)
- D. Insight & Analytics

Answer: C

Explanation:

The IT Service Management Connector (ITSMC) allows you to connect Azure and a supported IT Service Management (ITSM) product/service. ITSMC supports connections with the following ITSM tools: ServiceNow
 System Center Service Manager Provance
 Cherwell
 With ITSMC, you can
 Create work items in ITSM tool, based on your Azure alerts (metric alerts, Activity Log alerts and Log Analytics alerts).
 Optionally, you can sync your incident and change request data from your ITSM tool to an Azure Log Analytics workspace.
 Reference:
<https://docs.microsoft.com/en-us/azure/azure-monitor/platform/itsmc-overview>

NEW QUESTION 136

DRAG DROP - (Topic 4)

You have an Azure Kubernetes Service (AKS) cluster.

You need to deploy an application to the cluster by using Azure DevOps.

Which three actions should you perform in sequence? To answer, move the appropriate actions from the list of actions to the answer area and arrange them in the correct order.

Actions

Create a service account in the cluster.

Create a service principal in Azure Active Directory (Azure AD).

Add an Azure Function App for Container task to the deployment pipeline.

Add a Helm package and deploy a task to the deployment pipeline.

Add a Docker Compose task to the deployment pipeline.

Configure RBAC roles in the cluster.

Answer Area

- A. Mastered
 B. Not Mastered

Answer: A

Explanation:

You can set up a CI/CD pipeline to deploy your apps on a Kubernetes cluster with Azure DevOps by leveraging a Linux agent, Docker, and Helm.

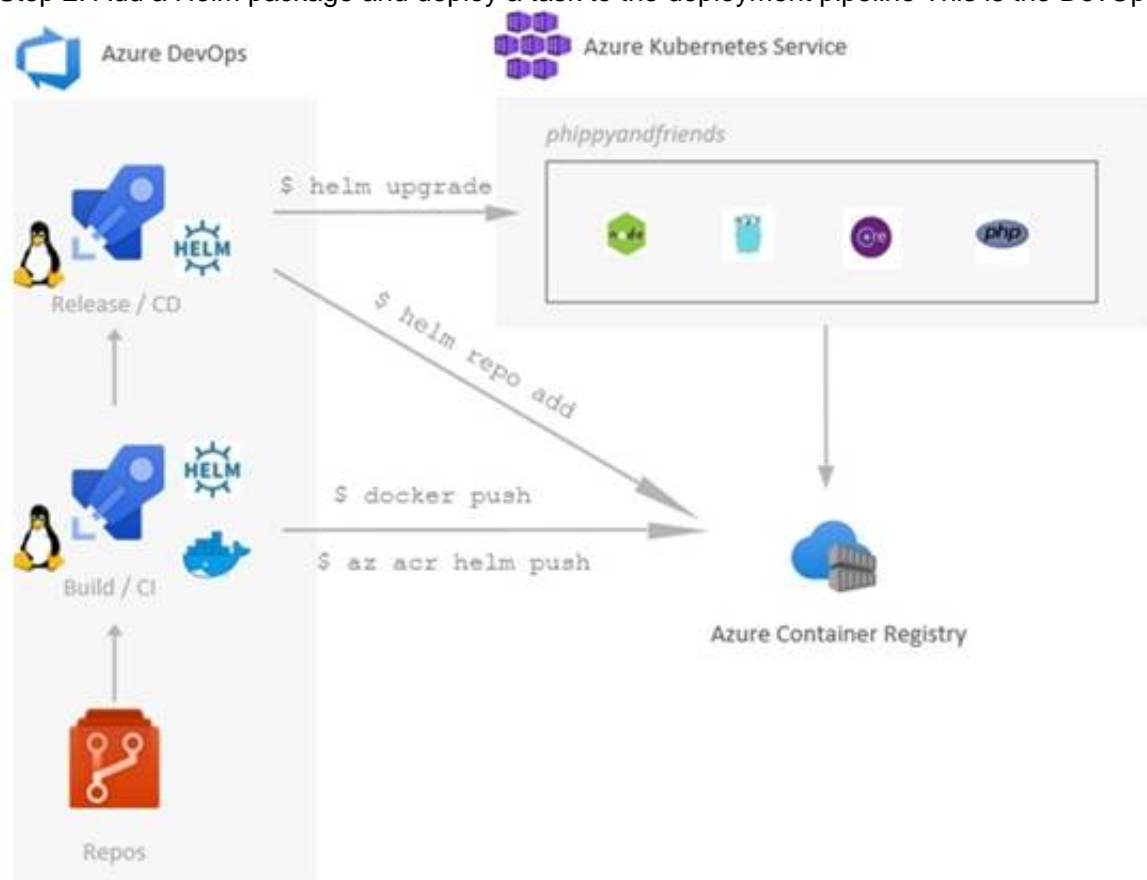
Step 1: Create a service principle in Azure Active Directory (Azure AD)

We need to assign 3 specific service principals with specific Azure Roles that need to interact with our ACR and our AKS.

Create a specific Service Principal for our Azure DevOps pipelines to be able to push and pull images and charts of our ACR.

Create a specific Service Principal for our Azure DevOps pipelines to be able to deploy our application in our AKS.

Step 2: Add a Helm package and deploy a task to the deployment pipeline This is the DevOps workflow with containers:



Step 3: Add a Docker Compose task to the deployment pipeline.

Dockerfile file is a script leveraged by Docker, composed of various commands (instructions) and arguments listed successively to automatically perform actions on a base image in order to create a new Docker image by packaging the app.

NEW QUESTION 140

SIMULATION - (Topic 4)

Your company plans to implement a new compliance strategy that will require all Azure web apps to be backed up every five hours.

You need to back up an Azure web app named az400-11566895-main every five hours to an Azure Storage account in your resource group.

To complete this task, sign in to the Microsoft Azure portal.

- A. Mastered
- B. Not Mastered

Answer: A

Explanation:

With the storage account ready, you can configure backs up in the web app or App Service.

? Open the App Service az400-11566895-main, which you want to protect, in the Azure Portal and browse to Settings > Backups. Click Configure and a Backup Configuration blade should appear.

? Select the storage account.

? Click + to create a private container. You could name this container after the web app or App Service.

? Select the container.

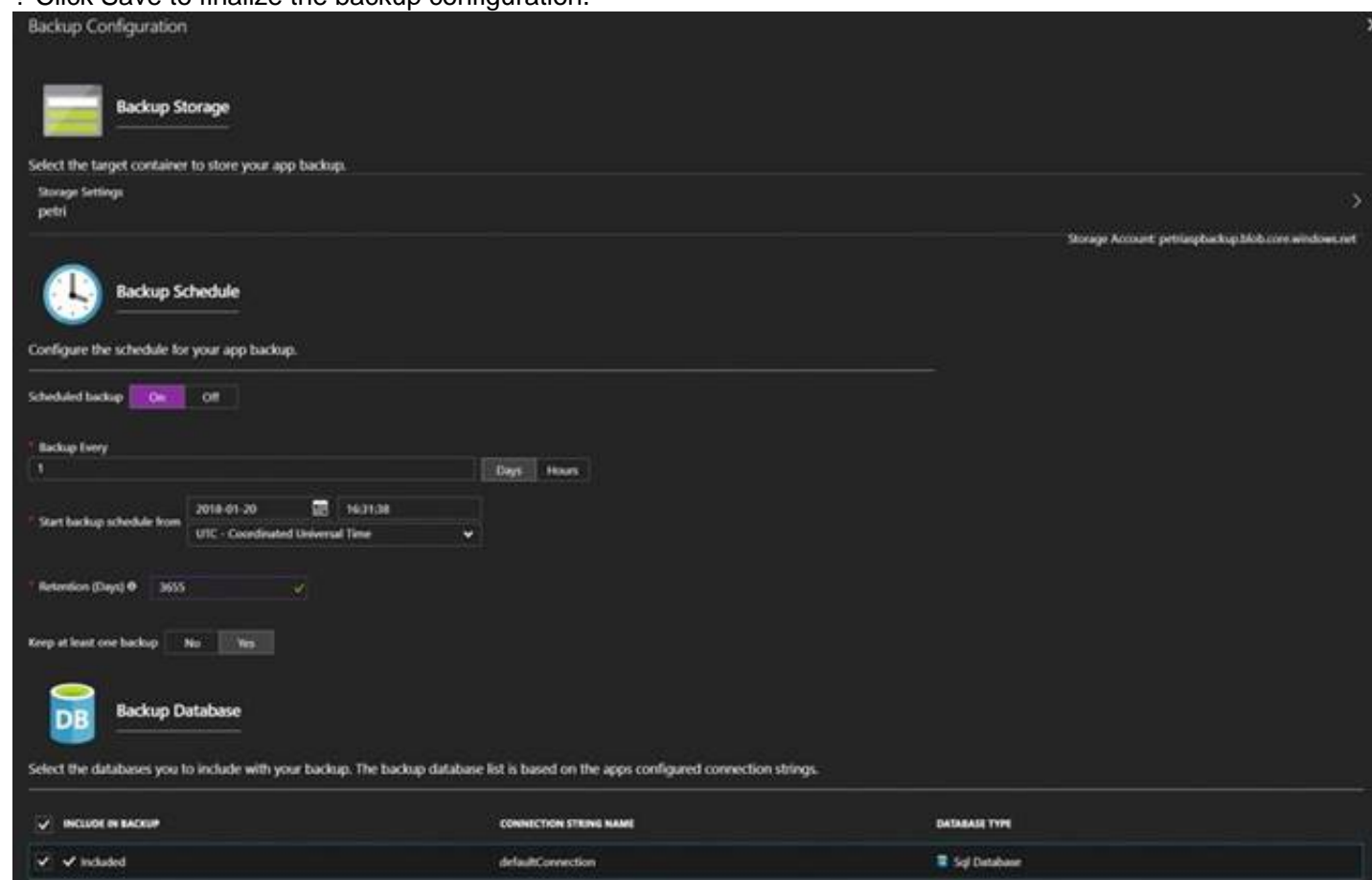
? If you want to schedule backups, then set Scheduled Backup to On and configure a schedule: every five hours

? Select your retention. Note that 0 means never delete backups.

? Decide if at least one backup should always be retained.

? Choose if any connected databases should be included in the web app backup.

? Click Save to finalize the backup configuration.



Backup Configuration

Backup Storage

Select the target container to store your app backup.

Storage Settings
petri

Storage Account: petriaz400backupblob.azurestorage.windows.net

Backup Schedule

Configure the schedule for your app backup.

Scheduled backup: ☒ On ☐ Off

Backup Every: 1 Days Hours

Start backup schedule from: 2018-01-20 16:31:38
UTC - Coordinated Universal Time

Retention (Days): 3655

Keep at least one backup: ☐ No ☒ Yes

Backup Database

Select the databases you to include with your backup. The backup database list is based on the apps configured connection strings.

| INCLUDE IN BACKUP | CONNECTION STRING NAME | DATABASE TYPE |
|--|------------------------|---------------|
| <input checked="" type="checkbox"/> Included | defaultConnection | Sql Database |

NEW QUESTION 142

- (Topic 4)

Note: This question is part of a series of questions that present the same scenario. Each question in the series contains a unique solution that might meet the stated goals. Some question sets might have more than one correct solution, while others might not have a correct solution.

After you answer a question in this section, you will NOT be able to return to it. As a result, these questions will not appear in the review screen.

You need to recommend an integration strategy for the build process of a Java application. The solution must meet the following requirements:

- The builds must access an on-premises dependency management system.
- The build outputs must be stored as Server artifacts in Azure DevOps.
- The source code must be stored in a Git repository in Azure DevOps.

Solution: Configure the build pipeline to use a Hosted Ubuntu agent pool. Include the Java Tool Installer task in the build pipeline. Does this meet the goal?

- A. Yes
- B. No

Answer: A

NEW QUESTION 144

- (Topic 4)

You are creating a dashboard in Azure Boards.

You need to visualize the time from when work starts on a work item until the work item is closed.

Which type of widget should you use?

- A. cycle time
- B. velocity
- C. cumulative flow
- D. lead time

Answer: D

NEW QUESTION 148

DRAG DROP - (Topic 4)

You are implementing a new project in Azure DevOps.

You need to assess the performance of the protect. The solution must identity the following metrics:

- How long it takes to complete a work item
- * The percentage of defects found in production

Which DevOps KPI should you review for each metric? To answer drag the appropriate KPIs to the correct metric. Each KPI may be used once, more than once, or not at all. You may need to drag the spirt bar between panes or scroll to view content.

NOTE Each correct selection is worth one point.

- A. Mastered
- B. Not Mastered

Answer: A

Explanation:

NEW QUESTION 152

SIMULATION - (Topic 4)

You need to configure an Azure web app named az400-9940427-main to contain an environmental variable named “MAX_ITEMS”. The environmental variable must have a value of 50.

To complete this task, sign in to the Microsoft Azure portal.

- A. Mastered
- B. Not Mastered

Answer: A

Explanation:

- * 1. In the Azure portal, navigate to the az400-9940427-main app's management page. In the app's left menu, click Configuration > Application settings.

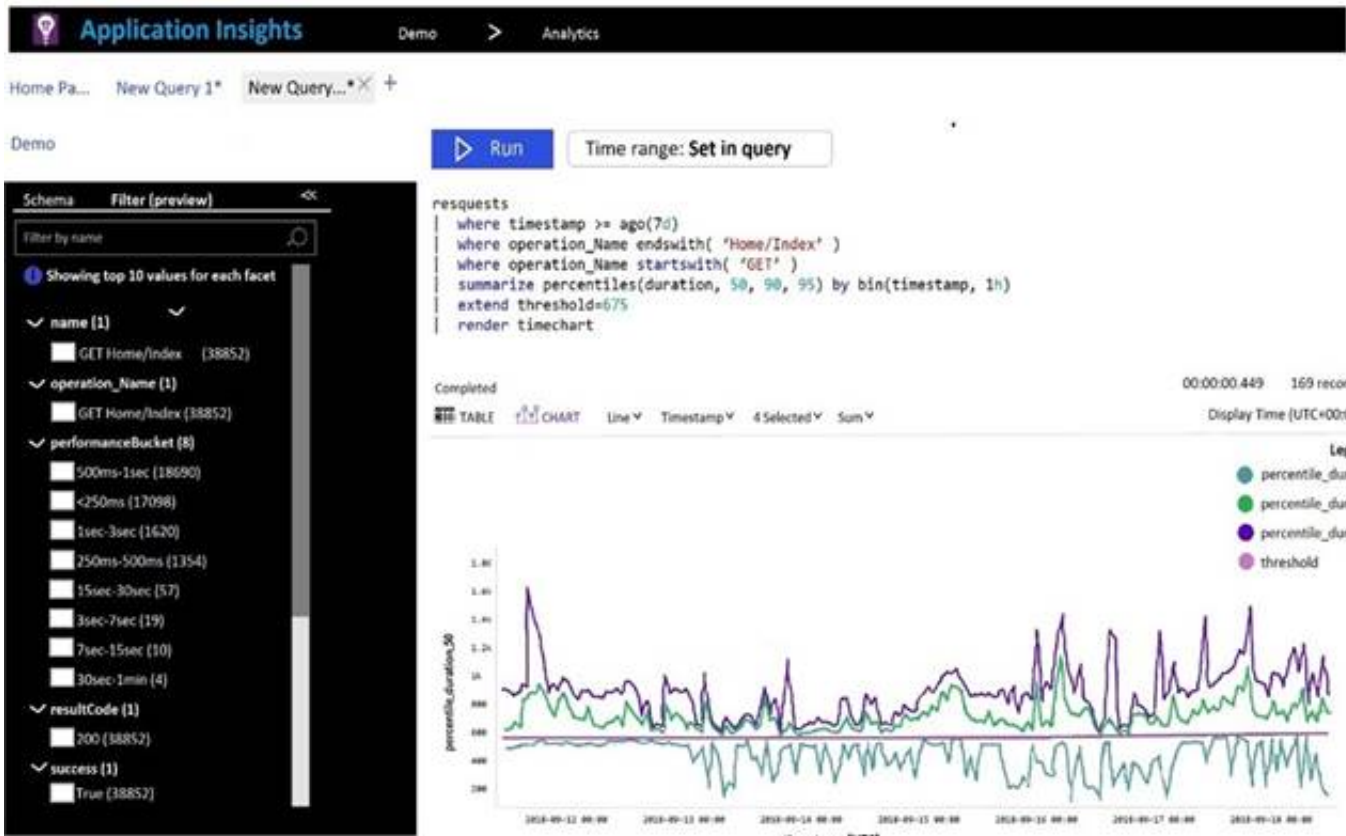
- * 2. Click New Application settings

* 3. Enter the following:
? Name: MAX_ITEMS
? Value: 50
References:
https://docs.microsoft.com/en-us/azure/app-service/configure-common

NEW QUESTION 157

HOTSPOT - (Topic 4)

You plan to create alerts that will be triggered based on the page load performance of a home page.
You have the Application Insights log query shown in the following exhibit.



Use the drop-down menus to select the answer choice that completes each statement based on the information presented in the graphic.
NOTE: Each correct selection is worth one point.

To create an alert based on the page load experience of most users, the alerting level must be based on [answer choice].

| | |
|------------------------|---|
| | ▼ |
| percentile_duration_50 | |
| percentile_duration_90 | |
| percentile_duration_95 | |
| threshold | |

To only create an alert when authentication error occurs on the server, the query must be filtered on [answer choice].

| | |
|------------|---|
| | ▼ |
| item Type | |
| resultCode | |
| source | |
| success | |

- A. Mastered
- B. Not Mastered

Answer: A

Explanation:

Timeline
Description automatically generated with low confidence
Box 1: percentile_duration_95
Box 2: success
For example – requests
| project name, url, success
| where success == "False"
This will return all the failed requests in my App Insights within the specified time range.

NEW QUESTION 161

- (Topic 4)

You use GitHub for source control and Azure Boards for project management. GitHub and Azure Boards are integrated.
You plan to create a pull request in GitHub.
You need to automatically link the request to an existing Azure Boards work item by using the text of AB#<WORKITEMNUMBER>.
To which two elements can you add the text? Each correct answer presents a complete solution.
NOTE: Each correct selection is worth one point.

- A. milestone
- B. comment
- C. title
- D. description
- E. label

Answer: CD

Explanation:

You can add the text "AB#<WORKITEMNUMBER>" to the title or description of the pull request in GitHub, which will automatically link the request to an existing Azure Boards work item with that number.

Reference:

Azure DevOps Docs: Link a work item to a pull request <https://docs.microsoft.com/en-us/azure/devops/repos/git/pull-requests?view=azure-devops#link-a-work-item-to-a-pull-request>

GitHub Docs: Creating a pull request <https://docs.github.com/en-us/github/collaborating-with-issues-and-pull-requests/creating-a-pull-request>

NEW QUESTION 165

DRAG DROP - (Topic 4)

You have an Azure DevOps organization named Contoso.

You have 10 Azure virtual machines that run Windows Server 2019. The virtual machines host an application that you build and deploy by using Azure Pipelines. Each virtual machine has the Web Server (IIS) role installed and configured.

You need to ensure that the web server configurations pin the virtual machines is maintained automatically. The solution must provide centralized management of the configuration settings and minimize management overhead.

Which four actions should you perform in sequence? To answer, move the appropriate actions from the list of actions to the answer area and arrange them in the correct order.

| Actions | Answer Area |
|---|-------------|
| Install the custom Desired State Configuration (DSC) extension on the virtual machines. | |
| Compile the Desired State Configuration (DSC) configuration. | |
| Import a Desired State Configuration (DSC) configuration into the Azure Automation account. | |
| Create an Azure Automation account. | |
| Onboard the virtual machines to the Azure Automation account. | |

- A. Mastered
- B. Not Mastered

Answer: A

Explanation:

Step1: Create an Azure Automation account. An Azure Automation account is required.

Step 2: Install the custom Desired State Configuration (DSC) extension on the virtual machines

Under the hood, and without an administrator having to remote into a VM, the Azure VM Desired State Configuration extension registers the VM with Azure Automation State Configuration.

Step 3: Onboard the virtual machines to the Azure Automation account.

Step 4: Complete the Desired State Configuration (DSC) configuration. Create a DSC configuration.

NEW QUESTION 167

HOTSPOT - (Topic 4)

Your company is building a new web application.

You plan to collect feedback from pilot users on the features being delivered.

All the pilot users have a corporate computer that has Google Chrome and the Microsoft Test & Feedback extension installed. The pilot users will test the application by using Chrome.

You need to identify which access levels are required to ensure that developers can request and gather feedback from the pilot users. The solution must use the principle of least privilege.

Which access levels in Azure DevOps should you identify? To answer, select the appropriate options in the answer area.

NOTE: Each correct selection is worth one point.

Developers:

Pilot users:

- A. Mastered
- B. Not Mastered

Answer: A

Explanation:

Graphical user interface, text, application Description automatically generated

Box 1: Basic

Assign Basic to users with a TFS CAL, with a Visual Studio Professional subscription, and to users for whom you are paying for Azure Boards & Repos in an

organization.

Box 2: Stakeholder

Assign Stakeholders to users with no license or subscriptions who need access to a limited set of features.

Note:

You assign users or groups of users to one of the following access levels: Basic: provides access to most features

VS Enterprise: provides access to premium features

Stakeholders: provides partial access, can be assigned to unlimited users for free

NEW QUESTION 169

HOTSPOT - (Topic 4)

You have an application named App1 that has a custom domain of app.contoso.com. You create a test in Azure Application Insights as shown in the following exhibit.

Create test

^ Basic Information

* Test name

availability

[Learn more about configuring tests against applications hosted behind a firewall](#)

Test type

URL ping test

* URL ⓘ

https://app.contoso.com

Parse dependent requests ⓘ

☒

Enable retries for availability test failures. ⓘ

☐

Test frequency ⓘ

5 minutes

^ Test locations

4 location(s) configured

^ Success criteria

Test Timeout ⓘ

30 seconds

☒ HTTP response ⓘ

Status code must equal

200

☒ Content match ⓘ

Content must contain

Copyright Contoso

^ Alerts

Enabled

Create

Use the drop-down menus to select the answer choice that completes each statement based on the information presented in the graphic.

NOTE: Each correct selection is worth one point.

The test will execute [answer choice].

▼

every 30 seconds at a random location
every 30 seconds per location
every five minutes at a random location
every five minutes per location

The test will pass if [answer choice] within 30 seconds.

▼

App1 responds to an ICMP ping
the HTML of App1 and the HTML from URLs in <a> tags load
all the HTML, JavaScripts, and images of App1 load

- A. Mastered
- B. Not Mastered

Answer: A

Explanation:

Box 1: every five minutes at a random location

Test frequency: Sets how often the test is run from each test location. With a default frequency of five minutes and five test locations, your site is tested on average every minute.

Box 2:

Parse dependent requests: Test requests images, scripts, style files, and other files that are part of the web page under test. The recorded response time includes the time taken to get these files. The test fails if any of these resources cannot be successfully downloaded within the timeout for the whole test.

NEW QUESTION 171

- (Topic 4)

Your company uses cloud-hosted Jenkins for builds.

You need to ensure that Jenkins can retrieve source code from Azure Repos.

Which three actions should you perform? Each correct answer presents part of the solution NOTE: Each correct answer selection is worth one point

- A. Add the Team Foundation Server (TFS) plug-in to Jenkins.
- B. Create a personal access token m your Azure DevOps account.
- C. Create a webhook in Jenkins.
- D. Add a domain to your Jenkins account.
- E. Create a service hook m Azure DevOps.

Answer: ABE

Explanation:

References:

<https://blogs.msdn.microsoft.com/devops/2017/04/25/vsts-visual-studio-team-services-integration-with-jenkins/>

<http://www.aisoftwarellc.com/blog/post/how-to-setup-automated-builds-using-jenkins-and-visual-studio-team-foundation-server/2044>

NEW QUESTION 172

DRAG DROP - (Topic 4)

You are creating a container for an ASP.NET Core app.

You need to create a Dockerfile file to build the image. The solution must ensure that the size of the image is minimized.

How should you configure the file? To answer, drag the appropriate values to the correct targets. Each value must be used once, more than once, or not at all. You may need to drag the split bar between panes or scroll to view content.

NOTE: Each correct selection is worth one point.

| Values | Answer Area |
|---|--|
| dotnet publish -c Release -o out | FROM <input type="text"/> As build-env |
| dotnet restore | COPY . /app/ |
| microsoft/dotnet:2.2-aspnetcore-runtime | WORKDIR /app |
| Microsoft/dotnet:2.2-sdk | RUN <input type="text"/> |
| | FROM <input type="text"/> |
| | COPY --from=build-env /app/out /app |
| | WORKDIR /app |
| | ENTRYPOINT ["dotnet", "MvcMovie.dll"] |

- A. Mastered
- B. Not Mastered

Answer: A

Explanation:

Box 1: microsoft.com/dotnet/sdk:2.3

The first group of lines declares from which base image we will use to build our container on top of. If the local system does not have this image already, then

docker will automatically try and fetch it. The mcr.microsoft.com/dotnet/core/sdk:2.1 comes packaged with the .NET core 2.1 SDK installed, so it's up to the task of building ASP .NET core projects targeting version 2.1

Box 2: dotnet restore

The next instruction changes the working directory in our container to be /app, so all commands following this one execute under this context.

COPY *.csproj ./ RUN dotnet restore

Box 3: microsoft.com/dotnet/2.2-aspnetcore-runtime

When building container images, it's good practice to include only the production payload and its dependencies in the container image. We don't want the .NET core SDK included in our final image because we only need the .NET core runtime, so the dockerfile is written to use a temporary container that is packaged with the SDK called build-env to build the app.

NEW QUESTION 173

- (Topic 4)

You manage source code control and versioning by using GitHub. A large file it committed to a repository accidentally.

You need to reduce the size of the repository. The solution must remove the file from the repository.

What should you use?

- A. bfg
- B. 1fs
- C. gvfs
- D. init

Answer: A

NEW QUESTION 175

SIMULATION - (Topic 4)

SIMULATION

You need to create and configure an Azure Storage account named az400lod11566895stor in a resource group named RG1lod11566895 to store the boot diagnostics for a virtual machine named VM1.

To complete this task, sign in to the Microsoft Azure portal.

- A. Mastered
- B. Not Mastered

Answer: A

Explanation:

Step 1: To create a general-purpose v2 storage account in the Azure portal, follow these steps:

On the Azure portal menu, select All services. In the list of resources, type Storage Accounts. As you begin typing, the list filters based on your input. Select Storage Accounts. On the Storage Accounts window that appears, choose Add.

Select the subscription in which to create the storage account. Under the Resource group field, select RG1lod11566895

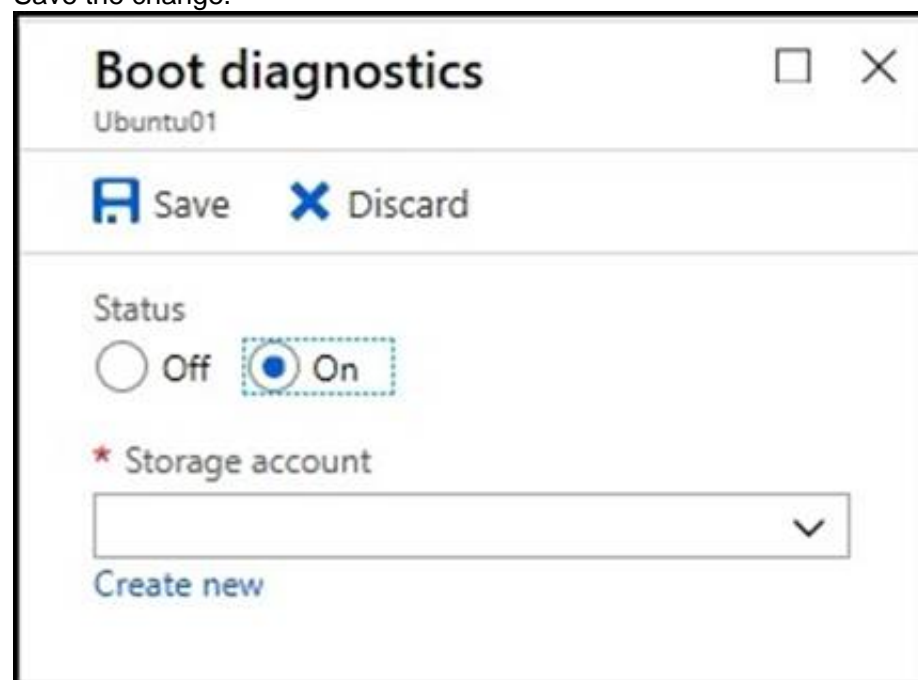
Next, enter a name for your storage account named: az400lod11566895stor Select Create.

Step 2: Enable boot diagnostics on existing virtual machine

To enable Boot diagnostics on an existing virtual machine, follow these steps: Sign in to the Azure portal, and then select the virtual machine VM1.

In the Support + troubleshooting section, select Boot diagnostics, then select the Settings tab.

In Boot diagnostics settings, change the status to On, and from the Storage account drop- down list, select the storage account az400lod11566895stor. Save the change.



You must restart the virtual machine for the change to take effect.

NEW QUESTION 179

DRAG DROP - (Topic 4)

You need to increase the security of your team's development process.

Which type of security tool should you recommend for each stage of the development process? To answer, drag the appropriate security tools to the correct stages. Each security tool may be used once, more than once, or not at all. You may need to drag the split bar between panes or scroll to view content

NOTE: Each correct selection is worth one point.

Security Tools

Answer Area

| | | |
|----------------------|-------------------------|----------------------|
| Penetration testing | Pull request: | <input type="text"/> |
| Static code analysis | Continuous integration: | <input type="text"/> |
| Threat modeling | Continuous delivery: | <input type="text"/> |

- A. Mastered
- B. Not Mastered

Answer: A

Explanation:
<https://docs.microsoft.com/en-us/azure/devops/migrate/security-validation-cicd-pipeline?view=azure-devops&viewFallbackFrom=vsts>
So:
PR: Static Code Analysis CI: Static Code Analysis CD: PenTest

NEW QUESTION 184

- (Topic 4)
You have several Azure Active Directory (Azure AD) accounts.
You need to ensure that users use multi-factor authentication (MFA) to access Azure apps from untrusted networks.
What should you configure in Azure AD?

- A. access reviews
- B. managed identities
- C. entitlement management
- D. conditional access

Answer: D

Explanation:
You can configure a Conditional Access policy that requires MFA for access from untrusted networks.
Reference:
<https://docs.microsoft.com/en-us/azure/active-directory/conditional-access/howto-conditional-access-policy-all-users-mfa>

NEW QUESTION 189

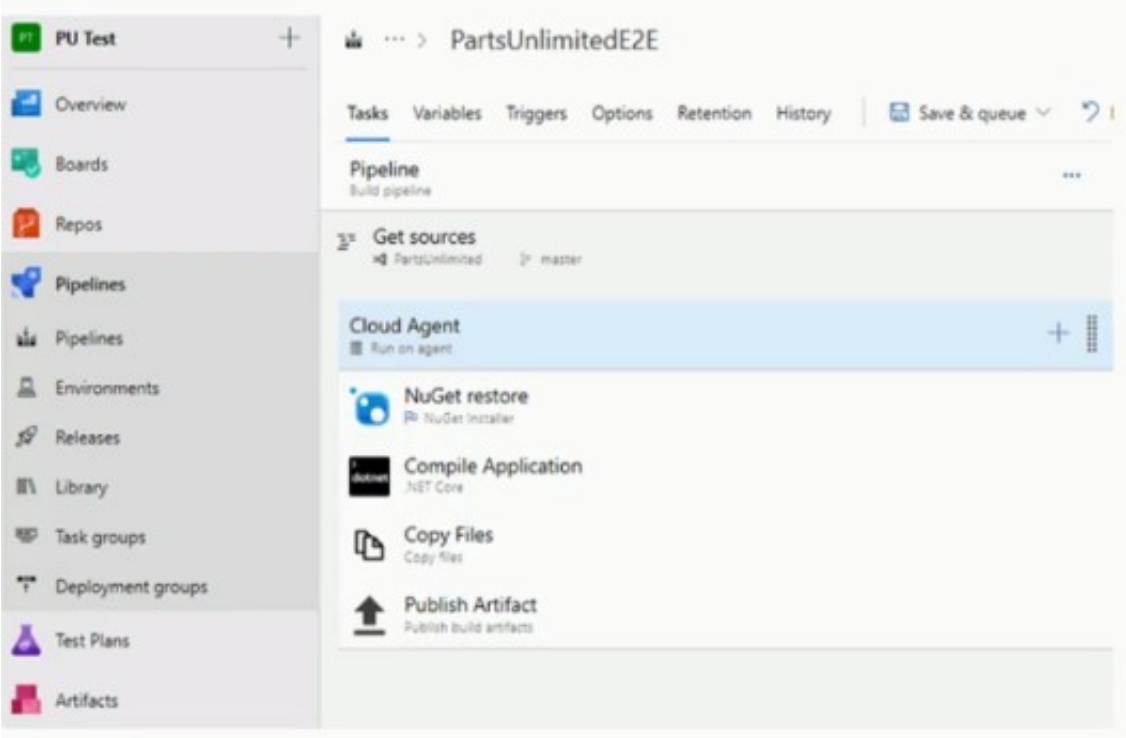
- (Topic 4)
You use GitHub for source control
You are evaluating whether to use proxying to add a private upstream MyGet package feed to your MyGet feed. What are two possible advantages of this approach? Each correct answer presents a complete solution.
NOTE: Each correct selection is worth one point.

- A. minimizes latency when accessing the package
- B. provides automatic authentication
- C. minimizes the impact on your storage quota
- D. minimizes the impact of upstream source availability issues

Answer: BC

NEW QUESTION 191

HOTSPOT - (Topic 4)
You have the Azure DevOps pipeline shown in the following exhibit.



Use the drop-down menus to select the answer choice that completes each statement based on the information presented in the graphic.

Answer Area

The pipeline has job(s).

The pipeline has task(s).

- A. Mastered
- B. Not Mastered

Answer: A

Explanation:

Box 1: 1

The Cloud agent job only.

Box 2: 4

The pipelines has the four tasks: NuGet restore, Compile Application, Copy Files, and Publish Artifact.

NEW QUESTION 194

- (Topic 4)

You have a GitHub repository that contains multiple versions of an Azure Pipelines template. You plan to deploy multiple pipelines that will use a template stored in the repository. You need to ensure that you use a fixed version of the template. What should you use to reference which version of the template repository to use?

- A. the runner
- B. the branch
- C. the SHA-based hashes
- D. the serial

Answer: B

NEW QUESTION 196

HOTSPOT - (Topic 4)

You have an Azure Kubernetes Service (AKS) pod.

You need to configure a probe to perform the following actions: Confirm that the pod is responding to service requests.

Check the status of the pod four times a minute. Initiate a shutdown if the pod is unresponsive.

How should you complete the YAML configuration file? To answer, select the appropriate options in the answer area.

NOTE: Each correct selection is worth one point.

```
apiVersion: v1
kind: Pod
metadata:
  labels:
    test: readiness-and-liveness
  name: readiness-http
spec:
  containers:
  - name: container1
    image: k8s.gcr.io/readiness-and-liveness
    args:
    - /server
```

```
httpGet:
  path: /checknow
  port: 8123
  httpHeaders:
  - name: Custom-Header
    value: CheckNow
```

- A. Mastered
- B. Not Mastered

Answer: A

Explanation:

Graphical user interface, text, application Description automatically generated

Box 1: readiness Probe:

For containerized applications that serve traffic, you might want to verify that your container is ready to handle incoming requests. Azure Container Instances supports readiness probes to include configurations so that your container can't be accessed under certain conditions.

NEW QUESTION 198

- (Topic 4)

You are developing an application. The application source has multiple branches. You make several changes to a branch used for experimentation.

You need to update the main branch to capture the changes made to the experimentation branch and override the history of the Git repository.

Which Git option should you use?

- A. Rebase
- B. Fetch
- C. MergeE1457D5D1DDCBD40AB3BF70D5D
- D. Push

Answer: C

Explanation:

<https://docs.microsoft.com/en-us/azure/devops/repos/git/pull-requests>

NEW QUESTION 200

- (Topic 4)

Note: This question n part of a series of questions that present the same scenario. Each question in the series contains a unique solution that might meet the stated goals. Some question sets might have more than one correct solution, while others might not have a correct solution

After you answer a question in this section, you will NOT be able to return to it. As a result these questions will not appear in the review screen.

You have an approval process that contains a condition. The condition requires that releases be approved by a team leader before they are deployed.

You have a policy stating that approvals must occur within eight hours.

You discover that deployments fail if the approvals lake longer than two hours.

You need to ensure that the deployments only fail if the approvals take longer than eight hours.

Solution: From Pre-deployment conditions, you modify the Timeout setting for pre- deployment approvals.

Does this meet the goal?

- A. Yes
- B. No

Answer: B

Explanation:

Use a gate instead of an approval instead.

References: <https://docs.microsoft.com/en-us/azure/devops/pipelines/release/approvals/gates>

NEW QUESTION 205

DRAG DROP - (Topic 4)

You use GitHub Enterprise Server as a source code repository. You create an Azure DevOps organization named Contoso.

In the Contoso organization, you create a project named Project 1.

You need to link GitHub commits, pull requests, and issues to the work items of Project 1. The solution must use OAuth-based authentication

Which three actions should you perform in sequence? To answer, move the appropriate actions from the list of actions to the answer area and arrange them in the correct order.

Actions

- From Project Settings in Azure DevOps, create a service hook subscription.
- From Organization settings in Azure DevOps, add an OAuth configuration.
- From Developer settings in GitHub Enterprise Server, register a new OAuth app.
- From Project Settings in Azure DevOps, add a GitHub connection.
- From Developer settings in GitHub Enterprise Server, generate a private key.
- From Organization settings in Azure DevOps, connect to Azure Active Directory (Azure AD).

Answer Area

➤

➤

⬆

⬇

- A. Mastered
- B. Not Mastered

Answer: A

Explanation:

Step 1: From Developer settings in GitHub Enterprise Server, register a new OAuth app. If you plan to use OAuth to connect Azure DevOps Services or Azure DevOps Server with your GitHub Enterprise Server, you first need to register the application as an OAuth App

Step 2: Organization settings in Azure DevOps, add an OAuth configuration Register your OAuth configuration in Azure DevOps Services.

Note:

? Sign into the web portal for Azure DevOps Services.

? Add the GitHub Enterprise Oauth configuration to your organization.

? Open Organization settings>Oauth configurations, and choose Add Oauth configuration.

? Fill in the form that appears, and then choose Create.

Step 3: From Project Settings in Azure DevOps, add a GitHub connection. Connect Azure DevOps Services to GitHub Enterprise Server. Choose the Azure DevOps logo to open Projects, and then choose the Azure Boards project you want to configure to connect to your GitHub Enterprise repositories. Choose (1) Project Settings, choose (2) GitHub connections and then (3) Click here to connect to your GitHub Enterprise organization.

NEW QUESTION 209

- (Topic 4)

You plan to use a NuGet package in a project in Azure DevOps. The NuGet package is in a feed that requires authentication. You need to ensure that the project can restore the NuGet package automatically. What should the project use to automate the authentication?

- A. an Azure Automation account
- B. an Azure Artifacts Credential Provider
- C. an Azure Active Directory (Azure AD) account that has multi-factor authentication (MFA) enabled
- D. an Azure Active Directory (Azure AD) service principal D18912E1457D5D1DDCBD40AB3BF70D5D

Answer: B

Explanation:

The Azure Artifacts Credential Provider automates the acquisition of credentials needed to restore NuGet packages as part of your .NET development workflow. It integrates with MSBuild, dotnet, and NuGet(.exe) and works on Windows, Mac, and Linux. Any time you want to use packages from an Azure Artifacts feed, the Credential Provider will automatically acquire and securely store a token on behalf of the NuGet client you're using.

Reference:

<https://github.com/Microsoft/artifacts-credprovider>

NEW QUESTION 214

- (Topic 4)

After you answer a question in this section, you will NOT be able to return to it. As a result, these questions will not appear in the review screen.

You have an Azure DevOps organization named Contoso and an Azure subscription. The subscription contains an Azure virtual machine scale set named VMSS1 that is configured for autoscaling.

You have a project in Azure DevOps named Project1. Project1 is used to build a web app named App1 and deploy App1 to VMSS1.

You need to ensure that an email alert is generated whenever VMSS1 scales in or out. Solution: From Azure DevOps, configure the Notifications settings for Project1.

Does this meet the goal?

- A. Yes
- B. No

Answer: B

Explanation:

Notifications help you and your team stay informed about activity that occurs within your projects in Azure DevOps. You can get notified when changes occur to the following items:

- ? work items
- ? code reviews
- ? pull requests
- ? source control files
- ? builds

Reference:

<https://docs.microsoft.com/en-us/azure/devops/notifications/about-notifications?view=azure-devops>

NEW QUESTION 216

DRAG DROP - (Topic 4)

You have a web app named App1 that is hosted on multiple servers. App1 uses Application Insights in Azure Monitor.

You need to compare the dairy CPU usage from the last week for all servers.

How should you complete the query? To answer, drag the appropriate values to the correct targets. Each value may be used once, more than once, or not at all.

You may need to drag the split bar between panes or scroll to view content

NOTE: Each correct selection is worth one point.

| Values | Answer Area |
|-------------------|--|
| bin(timestamp,id) | <pre> ... performanceCounters where counter == "% Processor Time" where timestamp >= ago(7d) summarize avg(value) by cloud_RoleInstance, ... </pre> |
| bin(timestamp,1h) | |
| project timechart | |
| render chart | |
| render timechart | |

- A. Mastered
- B. Not Mastered

Answer: A

Explanation:

<https://docs.microsoft.com/en-us/azure/azure-monitor/app/performance-counters>

NEW QUESTION 220

- (Topic 4)

Your company creates a web application.

You need to recommend a solution that automatically sends to Microsoft Teams a dairy summary of the exceptions that occur m the application.

Which two Azure services should you recommend? Each correct answer presents part of the solution.

NOTE: Each correct selection is worth one point.

- A. Microsoft Visual Studio App Center
- B. Azure DevOps Project
- C. Azure Logic Apps
- D. Azure Pipelines
- E. Azure Application Insights

Answer: CE

Explanation:

References:

<https://docs.microsoft.com/en-us/azure/azure-monitor/app/asp-net-exceptions> <https://docs.microsoft.com/en-us/azure/azure-monitor/app/automate-custom-reports>

NEW QUESTION 221

- (Topic 4)

Your company is building a new solution in Java.

The company currently uses a SonarQube server to analyze the code of .NET solutions. You need to analyze and monitor the code quality of the Java solution.

Which task types should you add to the build pipeline?

- A. Chef
- B. Gradle
- C. Octopus
- D. Gulp

Answer: B

Explanation:

SonarQube is a set of static analyzers that can be used to identify areas of improvement in

your code. It allows you to analyze the technical debt in your project and keep track of it in the future. With Maven and Gradle build tasks, you can run SonarQube analysis with minimal setup in a new or existing Azure DevOps Services build task.

References:

<https://docs.microsoft.com/en-us/azure/devops/java/sonarqube?view=azure-devops>

NEW QUESTION 224

DRAG DROP - (Topic 4)

You are building an application that has the following assets:

? Source code

? Logs from automated tests and builds

? Large and frequently updated binary assets

? A common library used by multiple applications

Where should you store each asset? To answer, drag the appropriate Azure services to the correct assets. Each service may be used once. You may need to drag the split bar between panes or scroll to view content.

NOTE: Each correct selection is worth one point.

| Asset | Azure Service |
|---|---------------|
| Source code: | Azure Service |
| A common library used by multiple applications: | Azure Service |
| Logs from automated tests and builds: | Azure Service |
| Large and frequently updated binary assets: | Azure Service |

- A. Mastered
- B. Not Mastered

Answer: A

Explanation:

Box 1: Azure Repos Box 2: Azure Artifacts

Use Azure Artifacts to create, host, and share packages with your team.

Box 3: Azure Pipelines

In the pipeline view you can see all the stages and associated tests. The view provides a summary of the test results

Box 4: Azure Storage

NEW QUESTION 226

SIMULATION - (Topic 4)

You need to ensure that an Azure web app named az400-9940427-main supports rolling upgrades. The solution must ensure that only 10 percent of users who connect to az400- 9940427-main use update versions of the app.

The solution must minimize administrative effort.

To complete this task, sign in to the Microsoft Azure portal.

- A. Mastered
- B. Not Mastered

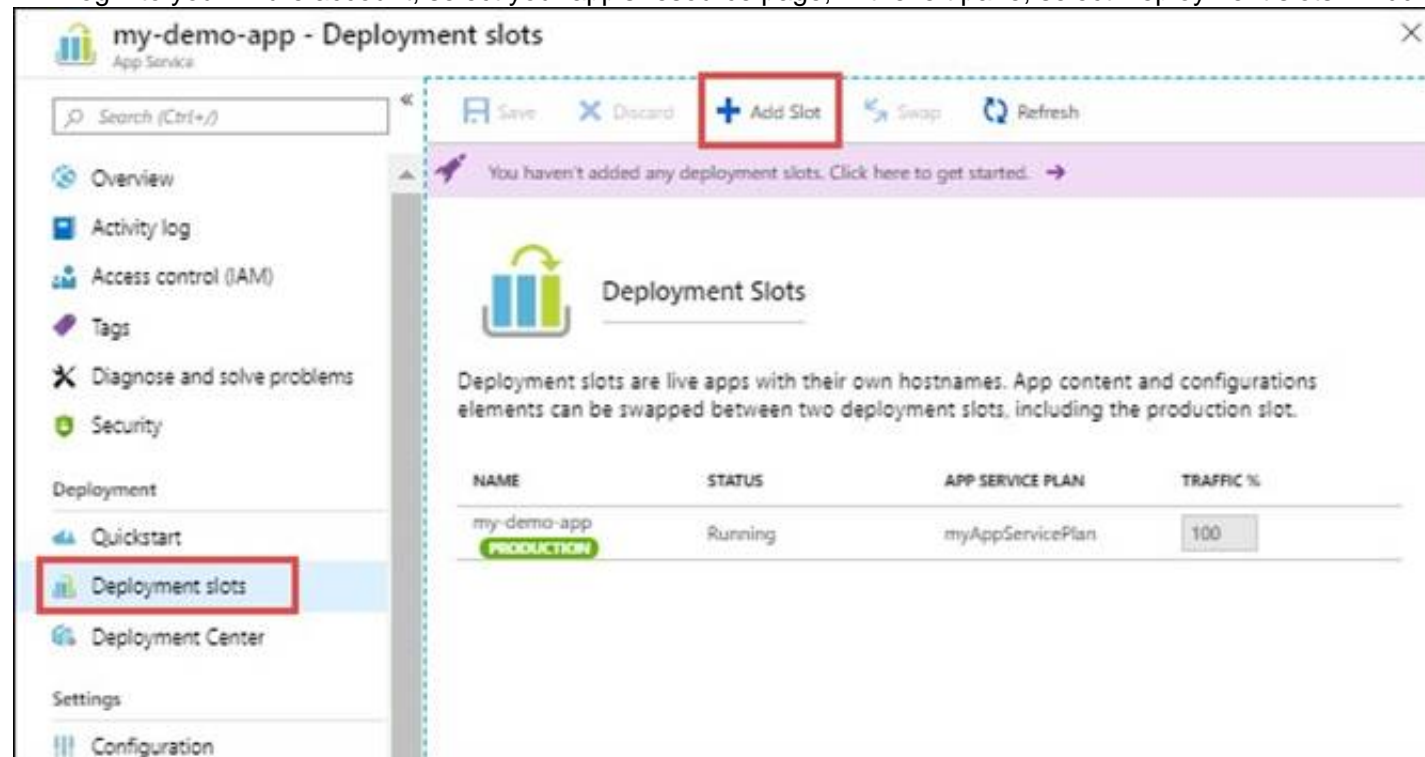
Answer: A

Explanation:

Set up staging environments in Azure App Service

* 1. Open Microsoft Azure Portal

* 2. Log into your Azure account, select your app's resource page, in the left pane, select Deployment slots > Add Slot.



* 3. In the Add a slot dialog box, give the slot a name, and select whether to clone an app configuration from another deployment slot. Select Add to continue.

Add a slot

Name

staging

Clone settings from:

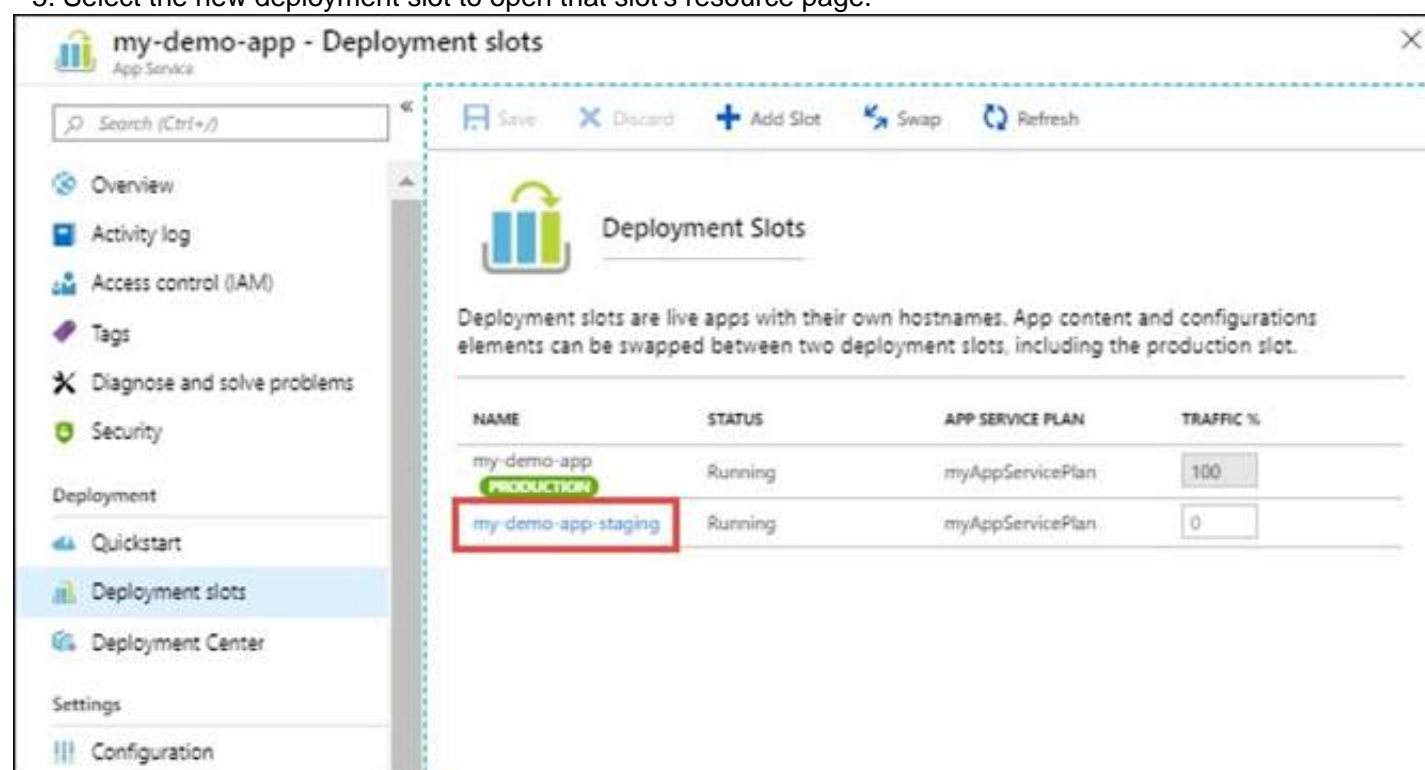
Do not clone settings

Add

Close

* 4. After the slot is added, select Close to close the dialog box. The new slot is now shown on the Deployment slots page. By default, Traffic % is set to 0 for the new slot, with all customer traffic routed to the production slot.

* 5. Select the new deployment slot to open that slot's resource page.



* 6. Change TRAFFIC % to 10 References:

<https://docs.microsoft.com/en-us/azure/app-service/deploy-staging-slots>

NEW QUESTION 227

- (Topic 4)
You have an Azure DevOps organization named Contoso, an Azure DevOps project named Project1, an Azure subscription named Sub1, and an Azure key vault named vault1.
You need to ensure that you can reference the values of the secrets stored in vault1 in all the pipelines of Project1. The solution must prevent the values from being stored in the pipelines. What should you do?

A. Create a variable group in Project1.
B. Add a secure file to Project1.
C. Modify the security settings of the pipelines.
D. Configure the security policy of Contoso.

Answer: A

Explanation:
Use a variable group to store values that you want to control and make available across multiple pipelines.
References:
https://docs.microsoft.com/en-us/azure/devops/pipelines/library/variable-groups https://docs.microsoft.com/en-us/azure/devops/pipelines/library/variable-groups?view=azure-devops&tabs=yaml#link-secrets-from-an-azure-key-vault

NEW QUESTION 231

- (Topic 4)
You have multi-tier application that has an Azure Web Apps front end and an Azure SQL Database back end.
You need to recommend a solution to capture and store telemetry data. The solution must meet the following requirements:

- Support using ad-hoc queries to identify baselines.
- Trigger alerts when metrics in the baseline are exceeded.
- Store application and database metrics in a central location. What should you include in the recommendation?

A. Azure Application Insights
B. Azure SQL Database Intelligent Insights
C. Azure Event Hubs
D. Azure Log Analytics

Answer: A

Explanation:
Azure Platform as a Service (PaaS) resources, like Azure SQL and Web Sites (Web Apps), can emit performance metrics data natively to Log Analytics. The Premium plan will retain up to 12 months of data, giving you an excellent baseline ability.
There are two options available in the Azure portal for analyzing data stored in Log analytics and for creating queries for ad hoc analysis.
References: https://docs.microsoft.com/en-us/azure/azure-monitor/platform/collect-azurepass-posh

NEW QUESTION 234

- (Topic 3)
You need to merge the POC branch into the default branch. The solution must meet the technical requirements. Which command should you run?

A. git push
B. git merge --allow-unrelated-histories
C. git rebase
D. git merge --squash

Answer: C

NEW QUESTION 236

DRAG DROP - (Topic 3)
You need to replace the existing DevOps tools to support the planned changes.
What should you use? To answer, drag the appropriate tools to the correct targets. Each tool may be used once, more than once, or not at all. You may need to drag the split bar between panes or scroll to view content.
NOTE: Each correct selection is worth one point.

| Tools | Answer Area |
|---------------------|-----------------|
| Azure Boards | Trello: Tool |
| Azure Artifacts | Bamboo: Tool |
| GitHub Actions | BitBucket: Tool |
| Azure Pipelines | |
| Azure Test Plans | |
| GitHub repositories | |

- A. Mastered
B. Not Mastered

Answer: A

Explanation:

Box 1: Azure Boards

Azure Boards can be used to track work with Kanban boards, backlogs, team dashboards, and custom reporting

You can create multiple Trello boards, which are spaces to store tasks (for different work contexts, or even private boards)

You can easily share Trello boards with another person.

Box 2: Azure Pipelines

You can use Bamboo to implement CI/CD (Continuous Integration and Continuous Delivery) for a simple Azure function app using Atlassian Bamboo. Bamboo does continuous delivery of the project from source code to deployment. It has stages including Build, Test and Deploy.

Software teams in every industry are upgrading their continuous delivery pipeline with Bamboo. Easy build import from popular open source tools, user and group import from JIRA, seamless integration with Bitbucket, and native support for Git, Hg, and SVN means you'll be building and deploying like a champ.

Box 3: GitHub repositories

Bitbucket can be used as the Git repository, but you can use any other Git repository (Like TFS Git) for source control of the code.

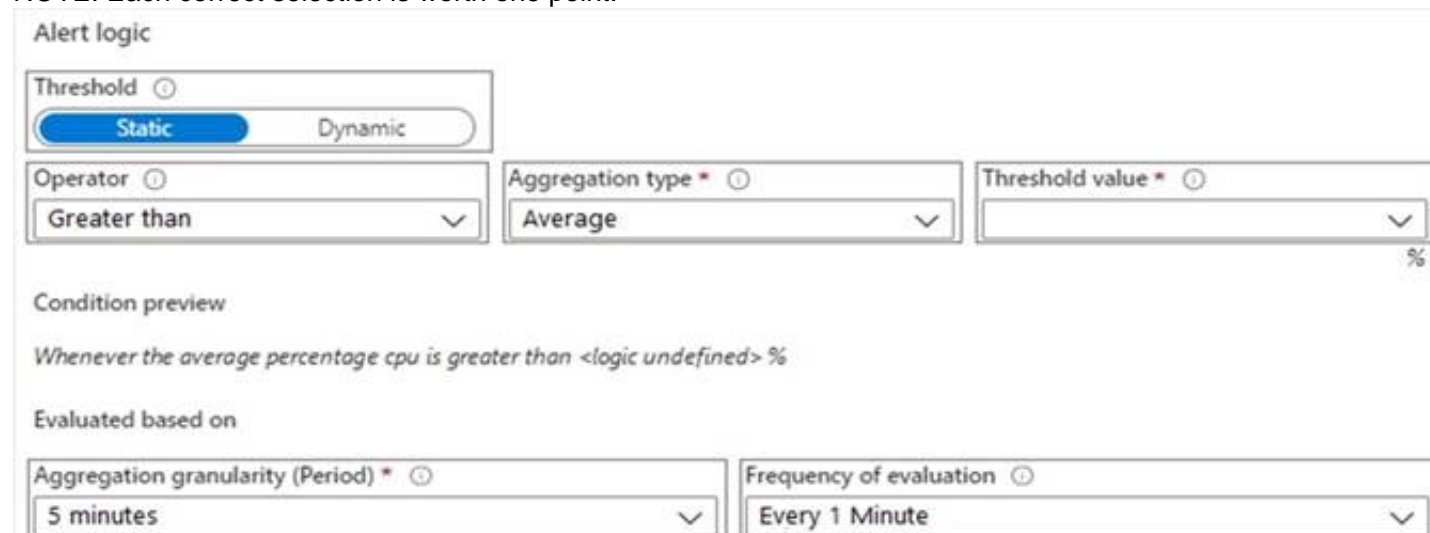
NEW QUESTION 239

HOTSPOT - (Topic 3)

You need to configure the alert for VM1. The solution must meet the technical requirements.

Which two settings should you configure? To answer, select the appropriate settings in the answer area.

NOTE: Each correct selection is worth one point.



Alert logic

Threshold ⓘ

Static Dynamic

Operator ⓘ

Greater than ▾

Aggregation type * ⓘ

Average ▾

Threshold value * ⓘ

80 %

Condition preview

Whenever the average percentage cpu is greater than <logic undefined> %

Evaluated based on

Aggregation granularity (Period) * ⓘ

5 minutes ▾

Frequency of evaluation ⓘ

Every 1 Minute ▾

- A. Mastered
B. Not Mastered

Answer: A

Explanation:

Setting 1: Threshold value Set to 80 %

Scenario: An Azure Monitor alert for VM1 must be configured to meet the following requirements:

? Be triggered when average CPU usage exceeds 80 percent for 15 minutes.

? Calculate CPU usage averages once every minute.

Setting 2: Aggregation granularity Set to 15 minutes.

NEW QUESTION 242

HOTSPOT - (Topic 2)

How should you configure the filters for the Project5 trigger? To answer, select the appropriate option in the answer area.

NOTE: Each correct selection is worth one point.

Set a

▼

/folder1.

branch filter to exclude

branch filter to include

path filter to exclude

path filter to include

Set a

▼

/.

branch filter to exclude

branch filter to include

path filter to exclude

path filter to include

@

- A. Mastered
- B. Not Mastered

Answer: A

Explanation:

Project5 will contain a Git repository in Azure Reports and a continuous integration trigger that will initiate a build in response to any change except for changes within /folder1 of the repository.

Scenario:
References: <https://docs.microsoft.com/en-us/azure/devops/pipelines/build/triggers>

NEW QUESTION 246

DRAG DROP - (Topic 2)
You need to implement Project6.
Which three actions should you perform in sequence? To answer, move the appropriate actions from the list of actions to the answer area and arrange them in the correct order.

Actions

Open the release pipeline editor.

Open the **Triggers** tab.

Disable the continuous integration trigger.

Enable Gates.

Add a manual intervention task.

Add Query Work Items.

Answer Area

1

2

3

>

<

↑

↓

- A. Mastered
- B. Not Mastered

Answer: A

Explanation:

Scenario: Implement Project3, Project5, Project6, and Project7 based on the planned changes

| | |
|-----------|---|
| Project 6 | Project6 will provide support for build and deployment pipelines. Deployment will be allowed only if the number of current work items representing active software bugs is 0. |
|-----------|---|

Step 1: Open the release pipeline editor.
In the Releases tab of Azure Pipelines, select your release pipeline and choose Edit to open the pipeline editor.
Step 2: Enable Gates.
Choose the pre-deployment conditions icon for the Production stage to open the conditions panel. Enable gates by using the switch control in the Gates section.
Step 3: Add Query Work items.
Choose + Add and select the Query Work Items gate. Configure the gate by selecting an existing work item query.

Deployment gates ⓘ
+ Add ▾

Query Work Items
Enabled ⓘ

Query Work Items ⓘ

Task version 0.* ▾

Display name *

Query Work Items

Query * ⓘ

Active Bugs ▾

Upper threshold * ⓘ

0

Advanced ^

Lower threshold * ⓘ

0

Output Variables ^

Reference name ⓘ

Variables list

There are no output variables associated with this task [more information](#) ⓘ

Evaluation options ▾

Note: A case for release gate is:

Incident and issues management. Ensure the required status for work items, incidents, and issues. For example, ensure deployment occurs only if no priority zero bugs exist, and validation that there are no active incidents takes place after deployment.

References:

<https://docs.microsoft.com/en-us/azure/devops/pipelines/release/deploy-using-approvals?view=azure-devops#configure-gate>

NEW QUESTION 250

HOTSPOT - (Topic 1)

How should you configure the release retention policy for the investment planning applications suite? To answer, select the appropriate options in the answer area.

NOTE: Each correct selection is worth one point.

Global release:

▼

Set the default retention policy to 30 days.

Set the maximum retention policy to 30 days.

Set the stage retention policy to 30 days.

Set the stage retention policy to 60 days.

Production stage:

▼

Set the default retention policy to 30 days.

Set the maximum retention policy to 60 days.

Set the stage retention policy to 30 days.

Set the stage retention policy to 60 days.

- A. Mastered
- B. Not Mastered

Answer: A

Explanation:

Scenario: By default, all releases must remain available for 30 days, except for production releases, which must be kept for 60 days.

Box 1: Set the default retention policy to 30 days

The Global default retention policy sets the default retention values for all the build pipelines. Authors of build pipelines can override these values.

Box 2: Set the stage retention policy to 60 days

You may want to retain more releases that have been deployed to specific stages. References: <https://docs.microsoft.com/en-us/azure/devops/pipelines/policies/retention>

NEW QUESTION 254

- (Topic 1)

What should you use to implement the code quality restriction on the release pipeline for the investment planning applications suite?

- A. a trigger
- B. a pre deployment approval
- C. a post-deployment approval
- D. a deployment gate

Answer: B

NEW QUESTION 255

- (Topic 4)

Note: This question is part of a series of questions that present the same scenario. Each question in the series contains a unique solution that might meet the stated goals. Some question sets might have more than one correct solution, while others might not have a correct solution.

After you answer a question in this section, you will NOT be able to return to it. As a result, these questions will not appear in the review screen.

Your company uses Azure DevOps to manage the build and release processes for applications.

You use a Git repository for applications source control.

You need to implement a pull request strategy that reduces the history volume in the master branch.

Solution: You implement a pull request strategy that uses an explicit merge. Does this meet the goal?

- A. Yes
- B. No

Answer: B

Explanation:

Instead use fast-forward merge.

Note:

No fast-forward merge - This option merges the commit history of the source branch when the pull request closes and creates a merge commit in the target branch.

Reference:

<https://docs.microsoft.com/en-us/azure/devops/repos/git/branch-policies>

NEW QUESTION 256

- (Topic 4)

Your company uses GitHub for source control. The company has a team that performs code reviews.

You need to automate the assignment of the code reviews. The solution must meet the following requirements:

Prioritize the assignment of code reviews to team members who have the fewest outstanding assignments.

Ensure that each team member performs an equal number of code reviews in any 30-day period.

Prevent the assignment of code reviews to the team leader.

Which two actions should you perform? Each correct answer presents part of the solution. NOTE: Each correct selection is worth one point.

- A. Clear Never assign certain team members.
- B. Select If assigning team members, don't notify the entire team.
- C. Select Never assign certain team members.
- D. Set Routing algorithm to Round robin.
- E. Set Routing algorithm to Load balance.

Answer: AE

Explanation:

A: To always skip certain members of the team, select Never assign certain team members. Then, select one or more team members you'd like to always skip. In this case select the team leader.

E: The load balance algorithm chooses reviewers based on each member's total number of recent review requests and considers the number of outstanding reviews for each member. The load balance algorithm tries to ensure that each team member reviews an equal number of pull requests in any 30day period.

Reference:

<https://docs.github.com/en/organizations/organizing-members-into-teams/managing-code-review-assignment-for-your-team>

NEW QUESTION 258

HOTSPOT - (Topic 4)

You are designing YAML-based Azure pipelines for the apps shown in the following table.

| Name | Platform | Release requirements |
|------|--|--|
| App1 | Azure virtual machine | Replace a fixed set of existing instances of the previous version of App1 with instances of the new version of the app in each iteration. |
| App2 | Azure Kubernetes Service (AKS) cluster | Roll out a limited deployment of the new version of App2 to validate the functionality of the app. Once testing is successful, expand the rollout. |

You need to configure the YAML strategy value for each app. The solution must minimize app downtime.

Which value should you configure for each app? To answer, select the appropriate options in the answer area.
 NOTE: Each correct selection is worth one point.

App1:

App2:

- A. Mastered
- B. Not Mastered

Answer: A

Explanation:

App1: rolling

A rolling deployment replaces instances of the previous version of an application with instances of the new version of the application on a fixed set of virtual machines (rolling set) in each iteration.

App2: canary

Canary deployment strategy is an advanced deployment strategy that helps mitigate the risk involved in rolling out new versions of applications. By using this strategy, you can roll out the changes to a small subset of servers first. As you gain more confidence in the new version, you can release it to more servers in your infrastructure and route more traffic to it.

NEW QUESTION 259

HOTSPOT - (Topic 4)

You use Get for source control.

You need to optimize the performance of a repository. The solution must meet the following requirements:

? Permanently remove all items referenced only in the ref log.

? Remove history that is NOT in any current branch.

How should you complete the command? To answer, select the appropriate options in the answer area.

git expire --expire-unreachable=now --all

git --prune=

- A. Mastered
- B. Not Mastered

Answer: A

Explanation:



NEW QUESTION 260

SIMULATION - (Topic 4)

You need to prepare a network security group (NSG) named az400-9940427-nsg1 to host an Azure DevOps pipeline agent. The solution must allow only the required outbound port for Azure DevOps and deny all other inbound and outbound access to the Internet.

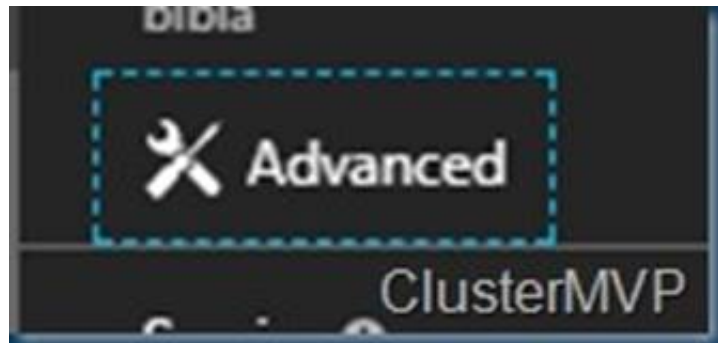
To complete this task, sign in to the Microsoft Azure portal.

- A. Mastered
- B. Not Mastered

Answer: A

Explanation:

- * 1. Open Microsoft Azure Portal and Log into your Azure account.
- * 2. Select network security group (NSG) named az400-9940427-nsg1
- * 3. Select Settings, Outbound security rules, and click Add
- * 4. Click Advanced



- * 5. Change the following settings:

? Destination Port range: 8080

? Protocol: TCP

? Action: Allow

Note: By default, Azure DevOps Server uses TCP Port 8080. References:

<https://robertsmit.wordpress.com/2017/09/11/step-by-step-azure-network-security-groups-nsg-security-center-azure-nsg-network/>

<https://docs.microsoft.com/en-us/azure/devops/server/architecture/required-ports?view=azure-devops>

NEW QUESTION 263

- (Topic 4)

You are designing an Azure DevOps strategy for your company's development team. You suspect that the team's productivity is low due to accumulate technical debt. You need to recommend a metric to assess the amount of the team's technical debt. What should you recommend?

- A. the number of code modules in an application
- B. the number of unit test failures
- C. the percentage of unit test failures
- D. the percentage of overall time spent on rework

Answer: D

NEW QUESTION 266

- (Topic 4)

After you answer a question in this section, you will NOT be able to return to it As a result, these questions will not appear in the review screen.

You use Azure Pipelines to build and test a React js application You have a pipeline that has a single job.

You discover that installing JavaScript packages from npm takes approximately five minutes each time you run the pipeline.

You need to recommend a solution to reduce the pipeline execution time. Solution: You recommend enabling pipeline caching.

Does this meet the goal?

- A. Yes
- B. No

Answer: A

Explanation:

npm-cache is a command line utility that caches dependencies installed via npm, bower, jspm and composer.

It is useful for build processes that run [npm|bower|composer|jspm] install every time as part of their build process. Since dependencies don't change often, this often means slower build times. npm-cache helps alleviate this problem by caching previously installed dependencies on the build machine.

Reference: <https://www.npmjs.com/package/npm-cache>

NEW QUESTION 269

- (Topic 4)

You have an Azure DevOps project that uses many package feeds.

You need to simplify the project by using a single feed that stores packages produced by your company and packages consumed from remote feeds. The solution must support public feeds and authenticated feeds.

What should you enable in DevOps?

- A. Universal Packages
- B. views in Azure Artifacts
- C. upstream sources
- D. a symbol server

Answer: C

NEW QUESTION 272

- (Topic 4)

You plan to create an image that will contain a .NET Core application.

You have a Dockerfile file that contains the following code. (Line numbers are included for reference only.)

```
01 FROM microsoft/dotnet:2.1-sdk
02 COPY ./
03 RUN dotnet publish -c Release -o out
04 FROM microsoft/dotnet:2.1-sdk
05 COPY -from=0 /out /
06 WORKDIR /
07 ENTRYPOINT ["dotnet", "appl.dll"]
```

You need to ensure that the image is as small as possible when the image is built. Which line should you modify in the file?

- A. 1
- B. 3
- C. 4
- D. 7

Answer: C

Explanation:

<https://github.com/dotnet/dotnet-docker/blob/master/samples/dotnetapp/README.md>

NEW QUESTION 274

- (Topic 4)

You configure an Azure Application Insights availability test.

You need to notify the customer services department at your company by email when availability is degraded.

You create an Azure logic app that will handle the email and follow up actions. Which type of trigger should you use to invoke the logic app?

- A. an ApiConnection trigger
- B. a Request trigger
- C. an HTTPWebhook trigger
- D. an HTTP trigger

Answer: C

Explanation:

You can use webhooks to route an Azure alert notification to other systems for post-processing or custom actions. You can use a webhook on an alert to route it to services that send SMS messages, to log bugs, to notify a team via chat or messaging services, or for various other actions.

Reference:

<https://docs.microsoft.com/en-us/azure/azure-monitor/platform/alerts-webhooks>

NEW QUESTION 278

- (Topic 4)

You are deploying a server application that will run on a Server Core installation of Windows Server 2019.

You create an Azure key vault and a secret.

You need to use the key vault to secure API secrets for third-party integrations. Which three actions should you perform? Each correct answer presents part of the solution.

NOTE: Each correct selection is worth one point. D18912E1457D5D1DDCBD40AB3BF70D5D

- A. Configure RBAC for the key vault.
- B. Modify the application to access the key vault.
- C. Configure a Key Vault access policy.
- D. Deploy an Azure Desired State Configuration (DSC) extension.
- E. Deploy a virtual machine that uses a system-assigned managed identity.

Answer: BCE

Explanation:

BE: An app deployed to Azure can take advantage of Managed identities for Azure resources, which allows the app to authenticate with Azure Key Vault using Azure AD authentication without credentials (Application ID and Password/Client Secret) stored in the app.

? Select Add Access Policy.

? Open Secret permissions and provide the app with Get and List permissions.

? Select Select principal and select the registered app by name. Select the Select button.

? Select OK.

? Select Save.

? Deploy the app.

References:

<https://docs.microsoft.com/en-us/aspnet/core/security/key-vault-configuration> <https://docs.microsoft.com/en-us/azure/key-vault/general/tutorial-net-virtual-machine>

NEW QUESTION 283

DRAG DROP - (Topic 4)

You have an app named App1. You have a Log Analytics workspace named Workspace 1 that contains two tables named Events and Logs. App1 manages events in multiple locations and writes togs to Workspace1.

You need to query Workspace1 for all log entries related to Asia that occurred during the last two days.

In which order should you arrange the query statements? To answer, move all statements from the let of statements to the answer area and arrange them in the correct order.

Statements

| join (Events

) on RequestId

| where Timestamp > ago(2d)

| where continent == 'Asia'

Logs

Answer Area

- A. Mastered
- B. Not Mastered

Answer: A

Explanation:

Statements

| join (Events

) on RequestId

| where Timestamp > ago(2d)

| where continent == 'Asia'

Logs

Answer Area

Logs

| where Timestamp > ago(2d)

| where continent == 'Asia'

| join (Events

) on RequestId

NEW QUESTION 284

- (Topic 4)

You have a project in Azure DevOps named Project1. Project1 contains a build pipeline named Pipe1 that builds an application named Appl.

You have an agent pool named Pool1 that contains a Windows Server 2019-based self- hosted agent. Pipe1 uses Pool1.

You plan to implement another project named Project2. Project2 will have a build pipeline named Pipe2 that builds an application named App2.

App1 and App2 have conflicting dependencies.

You need to minimize the possibility that the two build pipelines will conflict with each other. The solution must minimize infrastructure costs. What should you do?

- A. Create two container jobs.
- B. Change the self-hosted agent to use Red Hat Enterprise Linux (RHEL) 9.
- C. Add another self-hosted agent
- D. Add a Docker Compose task to the build pipelines.

Answer: A

NEW QUESTION 289

SIMULATION - (Topic 4)

You need to create and configure an Azure Storage account named az400lod11566895stor in a resource group named RG1lod11566895 to store the boot diagnostics for a virtual machine named VM1.

To complete this task, sign in to the Microsoft Azure portal.

- A. Mastered
- B. Not Mastered

Answer: A

Explanation:

Step 1: To create a general-purpose v2 storage account in the Azure portal, follow these steps:

- ? On the Azure portal menu, select All services. In the list of resources, type Storage Accounts. As you begin typing, the list filters based on your input. Select Storage Accounts.
- ? On the Storage Accounts window that appears, choose Add.
- ? Select the subscription in which to create the storage account.
- ? Under the Resource group field, select RG1lod11566895
- ? Next, enter a name for your storage account named: az400lod11566895stor
- ? Select Create.

Step 2: Enable boot diagnostics on existing virtual machine

To enable Boot diagnostics on an existing virtual machine, follow these steps:

- * 1. Sign in to the Azure portal, and then select the virtual machine VM1.
- * 2. In the Support + troubleshooting section, select Boot diagnostics, then select the Settings tab.
- * 3. In Boot diagnostics settings, change the status to On, and from the Storage account drop-down list, select the storage account az400lod11566895stor.
- * 4. Save the change.

You must restart the virtual machine for the change to take effect.

NEW QUESTION 293

- (Topic 4)

You have an Azure subscription that contains the resources shown in the following table.

| Name | Type |
|----------|-------------------------|
| Feed1 | Azure Artifacts feed |
| Project1 | Project in Azure DevOps |

Project1 produces 9pm packages that are published to Feed1. Feed1 is consumed by multiple projects.

You need to ensure that only tested packages are available for consumption. The solution must minimize development effort.

What should you do?

- A. Create a feed view named @default
- B. After the 9pm packages test successfully, configure a release pipeline that tags the packages as release.
- C. Create a feed view named @release and set @release as the default view
- D. After the 9pm packages test successfully, configure a release pipeline that tags the packages as release.
- E. Create a feed view named @release and set @release as the default view After the 9pm packages test successfully, configure a release pipeline that promotes a package to the @release view.
- F. Create a feed view named @default
- G. After the 9pm packages test successfully, configure a release pipeline that promotes a package to the @default view.

Answer: C

Explanation:

By creating a feed view named "release" and setting it as the default view, packages that are published to the feed will not be immediately available for consumption. After the 9pm packages are tested successfully, you can configure a release pipeline that promotes a package to the @release view. This ensures that only tested packages are available for consumption and minimizes development effort as it doesn't require any additional steps to be taken by the consumer of the feed.

Reference:

Azure DevOps Docs: Create a feed and views <https://docs.microsoft.com/en-us/azure/devops/artifacts/feeds/create-feed?view=azure-devops>

Azure DevOps Docs: Promote a package <https://docs.microsoft.com/en-us/azure/devops/artifacts/feeds/promote-package?view=azure-devops>

NEW QUESTION 296

- (Topic 4)

You have a web app hosted on Azure App Service. The web app stores data in an Azure SQL database.

You need to generate an alert when there are 10,000 simultaneous connections to the database. The solution must minimize development effort.

Which option should you select in the Diagnostics settings of the database?

- A. Send to Log Analytics
- B. Stream to an event hub
- C. Archive to a storage account

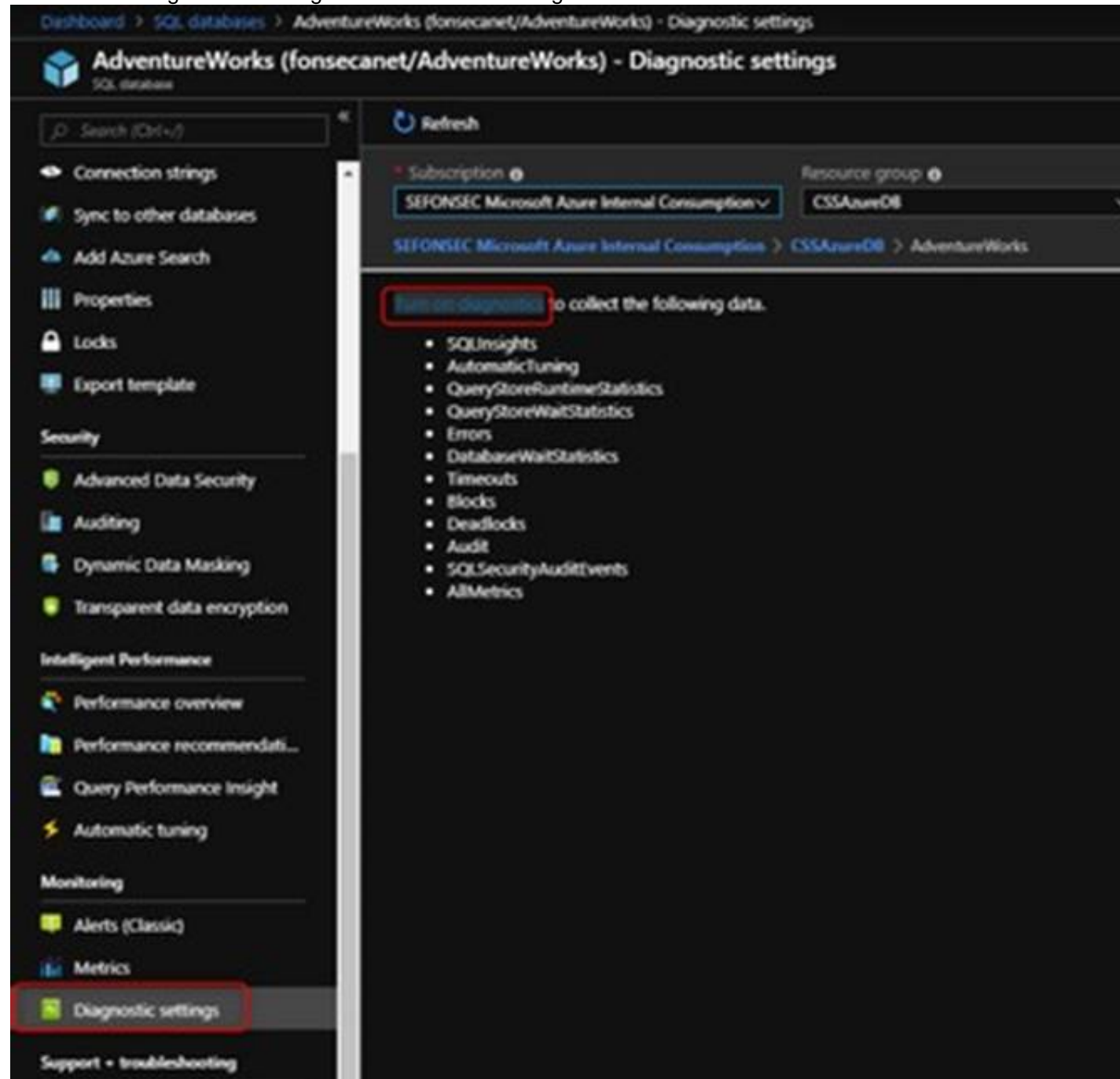
Answer: A

Explanation:

ENABLE DIAGNOSTICS TO LOG ANALYTICS

This configuration is done PER DATABASE

* 1. Click on Diagnostics Settings and then Turn On Diagnostics



* 2. Select to Send to Log Analytics and select the Log Analytics workspace. For this sample I will selected only Errors

Graphical user interface Description automatically generated with medium confidence

Reference:

<https://techcommunity.microsoft.com/t5/azure-database-support-blog/azure-sql-db-and-log-analytics-better-together-part-1/ba-p/794833>

NEW QUESTION 297

- (Topic 4)

Your company is building a mobile app that targets Android devices and OS devices. Your team uses Azure DevOps to manage all work items and release cycles. You need to recommend a solution to perform the following tasks:

- Collect crash reports for issue analysis
- Distribute beta releases to your testers.
- Get user feedback on the functionality of new apps. What should you include in the recommendation?

- A. Jenkins integration
- B. Azure Application Insights widgets
- C. the Microsoft Test & Feedback extension
- D. Microsoft Visual Studio App Center integration

Answer: D

Explanation:

The "Exploratory Testing" extension is now "Test & Feedback" and is now Generally Available.

Anyone can now test web apps and give feedback, all directly from the browser on any platform: Windows, Mac, or Linux. Available for Google Chrome and Mozilla Firefox (required version 50.0 or above) currently. Support for Microsoft Edge is in the pipeline and will be enabled once Edge moves to a Chromium-compatible web platform.

References:

<https://marketplace.visualstudio.com/items?itemName=ms.vss-exploratorytesting-web>

NEW QUESTION 300

DRAG DROP - (Topic 4)

Your company plans to deploy an application to the following endpoints:

- Ten virtual machines hosted in Azure.
- Ten virtual machines hosted in an on-premises data center environment All the virtual machines have the- Azure Pipelines agent.

You need to implement a release strategy for deploying the application to the endpoints.

What should you recommend using to deploy the application to the endpoints? To answer, drag the appropriate components to the correct endpoint.

Each component may be used once, more than once, or not at all. You may need to drag the split bar between panes or soon to view content

NOTE: Each correct selection n worth one point.

| Components | Answer Area |
|--------------------|---|
| A deployment group | |
| A management group | Ten virtual machines hosted in Azure: <input type="text"/> |
| A resource group | Ten virtual machines hosted in an on-premises data center environment: <input type="text"/> |
| Application roles | |

- A. Mastered
 B. Not Mastered

Answer: A

Explanation:

Box 1: A deployment group

When authoring an Azure Pipelines or TFS Release pipeline, you can specify the deployment targets for a job using a deployment group.

If the target machines are Azure VMs, you can quickly and easily prepare them by installing the Azure Pipelines Agent Azure VM extension on each of the VMs, or by using the Azure Resource Group Deployment task in your release pipeline to create a deployment group dynamically.

Box 2: A deployment group

References: <https://docs.microsoft.com/en-us/azure/devops/pipelines/release/deployment-groups>

NEW QUESTION 303

- (Topic 4)

You manage code by using GitHub.

You need to ensure that repository owners are notified if a new vulnerable dependency or malware is found in their repository.

What should you do?

- A. Configure branch protection rules for each repository.
 B. Configure Dependabot alerts.
 C. Configure CodeQL scanning actions.
 D. Subscribe all the repository owners to the GitHub Advisory Database.

Answer: B

NEW QUESTION 307

- (Topic 4)

You have an Azure subscription that contains the resources shown in the following table.

| Name | Type |
|--------------|----------------------------------|
| DepPipeline1 | Azure DevOps deployment pipeline |
| ADFPipeline1 | Azure Data Factory pipeline |
| Vault1 | Azure Key Vault |

DepPipeline1 and ADFPipeline1 use a single credential that is stored in Vault1. You need to configure ADFPipeline1 to retrieve the credential from Vault1. Which type of activity should you use?

- A. Web
 B. Copy
 C. Lookup
 D. Get Metadata

Answer: A

NEW QUESTION 309

- (Topic 4)

You have an Azure subscription that contains resources in several resource groups.

You need to design a monitoring strategy that will provide a consolidated view. The solution must support the following requirements:

- Support role-based access control (RBAC) by using Azure Active Directory (Azure AD) identities.
- Include visuals from Azure Monitor that are generated by using the Kusto query language.
- Support documentation written in markdown.
- Use the latest data available for each visual.

What should you use to create the consolidated view?

- A. Azure Data Explorer
 B. Azure dashboards
 C. Azure Monitor
 D. Microsoft Power BI

Answer: A

Explanation:

There are several tools available for running queries in Azure Data Explorer, including Kusto. Kusto uses a role-based access control (RBAC) model, under which authenticated principals are mapped to roles, and get access according to the roles they're assigned. Note: Azure Data Explorer is a highly scalable and secure analytics service that enables you to do rich exploration of structured and unstructured data for instant insights. Optimized for ad-hoc queries, Azure Data Explorer enables rich data exploration over raw, structured, and semi-structured data delivering fast time to insight. Query with a modern, intuitive query language that offers fast, ad-hoc, and advanced query capabilities over high-rate data volumes and varieties Reference: https://docs.microsoft.com/en-us/azure/data-explorer/tools-integrations-overview

NEW QUESTION 311

DRAG DROP - (Topic 4)
You have a GitHub organization that contains three users named User 1. User2. and User3. You have a project that contains a repository named repo1. You need to configure permissions for repo1. The solution must meet the following requirements:
• Ensure that User 1 can actively push to repo1.
• Ensure that Usef2 can manage issues and pull requests for repo1.
• Ensure that User3 can manage repo1.

Prevent User3 from accessing sensitive data

in repo1. Which role should you assign to each use?

Roles

Admin

Maintain

Read

Triage

Write

Answer Area

User1: Role

User2: Role

User3: Role

- A. Mastered
- B. Not Mastered

Answer: A

Explanation:

Roles

Admin

Maintain

Read

Triage

Write

Answer Area

User1: Read

User2: Maintain

User3: Admin

NEW QUESTION 315

DRAG DROP - (Topic 4)
You have a project in Azure DevOps named Project1 that has a release pipeline in Azure Pipeline named ReleaseP1. you need to ensure that when a new release is generated for ReleaseP1, a new release note document is created. The release notes must contain new features and bug fixes. Which three actions should you perform in sequence? To answer, move the appropriate actions from the Most of actions to the answer area and arrange them r the correct order. NOTE: More than one order of answer choices is correct You will receive credit for any of the correct orders you select

Actions

Add a dashboard widget that retrieves the feature and bug fix information.

Create a PowerShell task in ReleaseP1 that writes the retrieved data to a markdown file.

Create a service principal.

Create a personal access token (PAT).

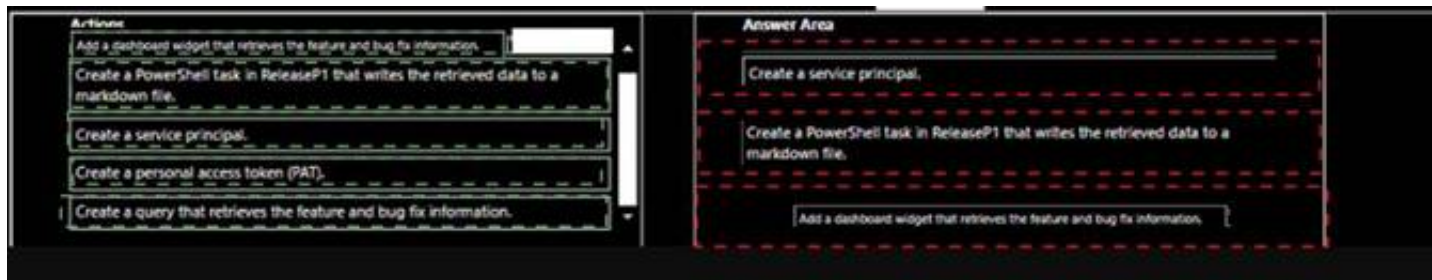
Create a query that retrieves the feature and bug fix information.

Answer Area

- A. Mastered
- B. Not Mastered

Answer: A

Explanation:



NEW QUESTION 318

- (Topic 4)

Note: This question is part of a series of questions that present the same scenario. Each question in the series contains a unique solution that might meet the stated goals. Some question sets might have more than one correct solution, while others might not have a correct solution.

After you answer a question in this section, you will NOT be able to return to it as a result, these questions will not appear in the review screen.

You have an Azure pipeline that is used to deploy a web app. The pipeline includes a test suite named TestSuite1. TestSuite1 is used to validate the operations of the web app.

TestSuite1 fails intermittently.

You identify that the failures are unrelated to changes in the source code and execution environment.

You need to minimize troubleshooting effort for the TestSuite1 failures. Solution: You implement the Test Results Trend widget.

Does this meet the goal?

A. Yes

B. No

Answer: B

NEW QUESTION 320

DRAG DROP - (Topic 4)

You are implementing an Azure DevOps strategy for mobile devices using App Center. You plan to use distribution groups to control access to releases.

You need to create the distribution groups shown in the following table.

| Name | Use |
|--------|--|
| Group1 | Application testers who are invited by email |
| Group2 | Early release users who use unauthenticated public links |
| Group3 | Application testers for all the apps of your company |

Which type of distribution group should you use for each group? To answer, drag the appropriate group types to the correct locations. Each group type may be used once, more

than once, or not at all. You may need to drag the split bar between panes or scroll to view content.

NOTE: Each correct selection is worth one point.

Private

Public

Shared

Answer Area

Group1:

Group2:

Group3:

A. Mastered

B. Not Mastered

Answer: A

Explanation:

Box1: Private

In App Center, distribution groups are private by default. Only testers invited via email can access the releases available to this group.

Box 2: Public

Distribution groups must be public to enable unauthenticated installs from public links.

Box 3: Shared

Shared distribution groups are private or public distribution groups that are shared across multiple apps in a single organization.

NEW QUESTION 322

- (Topic 4)

You are designing a configuration management solution to support five apps hosted on Azure App Service.

Each app is available in the following three environments: development, test, and production.

You need to recommend a configuration management solution that meets the following requirements:

? Supports feature flags

? Tracks configuration changes from the past 30 days

? Stores hierarchically structured configuration values
? Controls access to the configurations by using role-based access control (RBAC) permission
? Stores shared values as key/value pairs that can be used by all the apps
Which Azure service should you recommend as the configuration management solution?

- A. Azure Cosmos DB
- B. Azure App Service
- C. Azure App Configuration
- D. Azure Key Vault

Answer: C

Explanation:

The Feature Manager in the Azure portal for App Configuration provides a UI for creating and managing the feature flags that you use in your applications. App Configuration offers the following benefits:

- ? A fully managed service that can be set up in minutes
- ? Flexible key representations and mappings
- ? Tagging with labels
- ? Point-in-time replay of settings
- ? Dedicated UI for feature flag management
- ? Comparison of two sets of configurations on custom-defined dimensions
- ? Enhanced security through Azure-managed identities
- ? Encryption of sensitive information at rest and in transit
- ? Native integration with popular frameworks

App Configuration complements Azure Key Vault, which is used to store application secrets.

Reference:

<https://docs.microsoft.com/en-us/azure/azure-app-configuration/overview>

NEW QUESTION 324

- (Topic 4)

You use a Git repository in Azure Repos to manage the source code of a web application. Developers commit changes directly to the master branch.

You need to implement a change management procedure that meets the following requirements:

The master branch must be protected, and new changes must be built in the feature branches first.

Changes must be reviewed and approved by at least one release manager before each merge.

Changes must be brought into the master branch by using pull requests. What should you configure in Azure Repos? D18912E1457D5D1DDCBD40AB3BF70D5D

- A. branch policies of the master branch
- B. Services in Project Settings
- C. Deployment pools in Project Settings
- D. branch security of the master branch

Answer: A

Explanation:

Branch policies help teams protect their important branches of development.

Policies enforce your team's code quality and change management standards. Reference:

<https://docs.microsoft.com/en-us/azure/devops/repos/git/branch-policies>

NEW QUESTION 325

- (Topic 4)

You have an Azure DevOps organization named Contoso.

You need to receive Microsoft Teams notifications when work items are updated. What should you do?

- A. From Azure DevOps, configure a service hook subscription
- B. From Microsoft Teams, configure a connector
- C. From the Microsoft Teams admin center, configure external access
- D. From Microsoft Teams, add a channel
- E. From Azure DevOps, install an extension

Answer: A

Explanation:

Service hooks let you run tasks on other services when events happen in your Azure DevOps projects. For example, create a card in Trello when a work item is created or send a push notification to your team's mobile devices when a build fails. You can also use service hooks in custom apps and services as a more efficient way to drive activities when events happen in your projects.

Note: Service hook publishers define a set of events. Subscriptions listen for the events and define actions to take based on the event. Subscriptions also target consumers, which are external services that can run their own actions, when an event occurs.

Reference:

<https://docs.microsoft.com/en-us/azure/devops/service-hooks/overview>

NEW QUESTION 326

- (Topic 4)

Your company uses Azure DevOps to manage the build and release processes for applications.

You use a Git repository for applications source control.

You plan to create a new branch from an existing pull request. Later, you plan to merge the new branch and the target branch of the pull request.

You need to use a pull request action to create the new branch. The solution must ensure that the branch uses only a portion of the code in the pull request.

Which pull request action should you use?

- A. Set as default branch
- B. Approve with suggestions

- C. Cherry-pick
- D. Reactivate
- E. Revert

Answer: C

Explanation:

Cherry-pick a pull request

To copy changes made in a pull request to another branch in your repo, follow these steps:

? In a completed pull request, select Cherry-pick, or for an active pull request, select Cherry-pick from the ... menu. Cherry-picking a pull request in this way creates a new branch with the copied changes. Merge into a target branch in a second pull request.

? In Target branch, enter the branch you want to merge the copied changes.

? In Topic branch name, enter a new branch to contain the copied changes, then select Cherry-pick.

? Select Create pull request to merge the topic branch into the target branch to complete the cherry-pick.

Reference:

<https://docs.microsoft.com/en-us/azure/devops/repos/git/pull-requests>

NEW QUESTION 330

- (Topic 4)

You use Calendar Versioning (CalVer) for code assets.

You need to store an optional tag of beta as part of the version. Which part of the version should you use for the tag?

- A. micro
- B. minor
- C. major
- D. modifier

Answer: D

NEW QUESTION 331

SIMULATION - (Topic 4)

You have a web app that connects to an Azure SQL Database named db1.

You need to configure db1 to send Query Store runtime statistics to Azure Log Analytics. To complete this task, sign in to the Microsoft Azure portal.

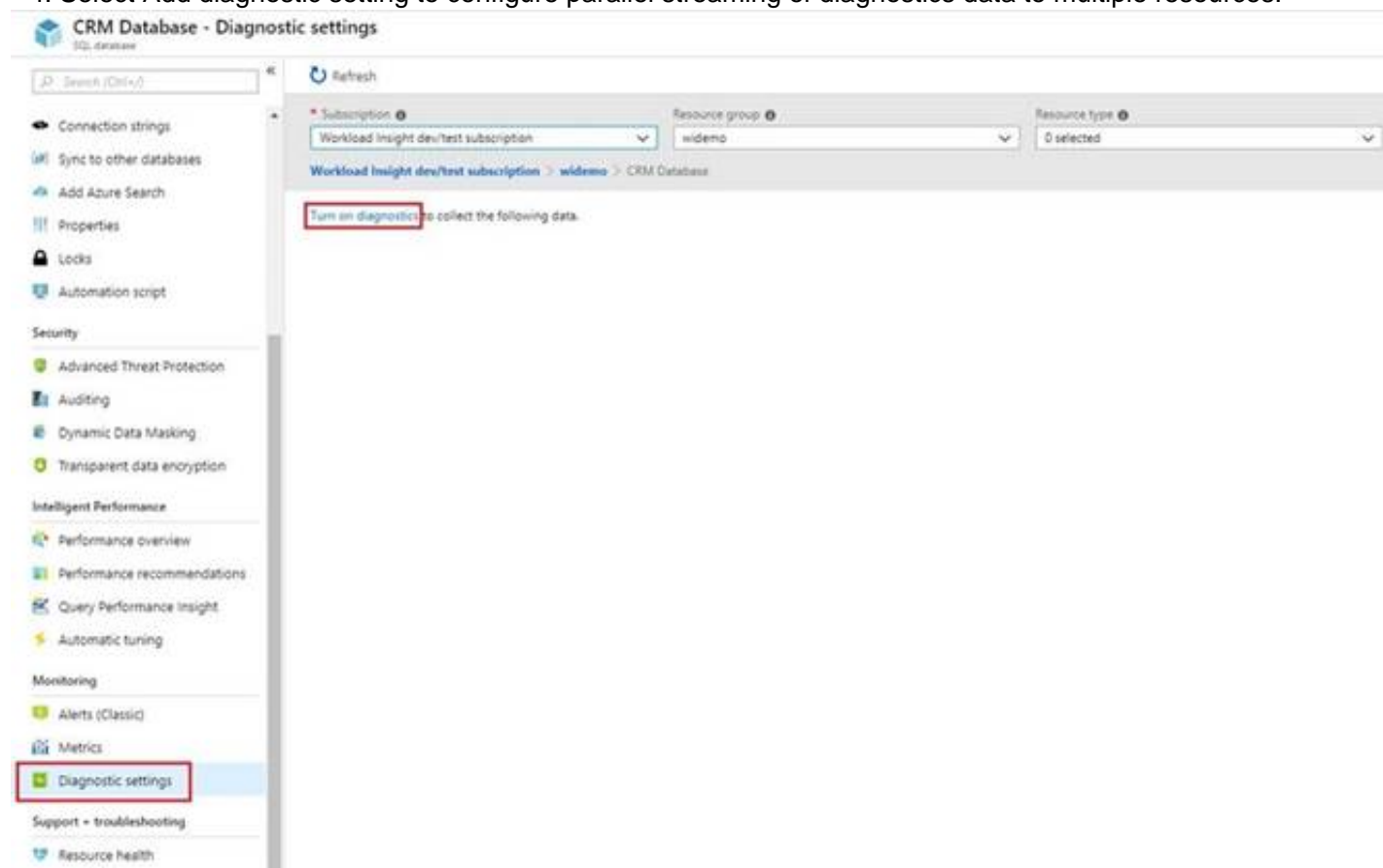
A.

Answer: Seesolutionbelow.

Explanation:

To enable streaming of diagnostic telemetry for a single or a pooled database, follow these steps:

- * 1. Go to Azure SQL database resource.
- * 2. Select Diagnostics settings.
- * 3. Select Turn on diagnostics if no previous settings exist, or select Edit setting to edit a previous setting. You can create up to three parallel connections to stream diagnostic telemetry.
- * 4. Select Add diagnostic setting to configure parallel streaming of diagnostics data to multiple resources.



- * 5. Enter a setting name for your own reference.
- * 6. Select a destination resource for the streaming diagnostics data: Archive to storage account, Stream to an event hub, or Send to Log Analytics.
- * 7. For the standard, event-based monitoring experience, select the following check boxes for database diagnostics log telemetry: QueryStoreRuntimeStatistics

Diagnostics settings

Save

Discard

Delete

Name

service

Archive to a storage account

Stream to an event hub

Send to Log Analytics

Subscription

Workload Insight dev/test subscription

Log Analytics Workspace

sqlanalytics356 (westcentralus)

LOG

SQLInsights

AutomaticTuning

QueryStoreRuntimeStatistics

QueryStoreWaitStatistics

Errors

DatabaseWaitStatistics

Timeouts

Blocks

Deadlocks

METRIC

Basic

* 8. For an advanced, one-minute-based monitoring experience, select the check box for Basic metrics.
* 9. Select Save.

NEW QUESTION 332

DRAG DROP - (Topic 4)

You have an Azure subscription that uses Azure Automation State Configuration to manage the configuration of virtual machines.

You need to identify which nodes are noncompliant.

How should you complete the query? To answer, drag the appropriate values to the correct targets. Each value may be used once, more than once, or not at all.

You may need to drag the split bar between panes or scroll to view content.

NOTE: Each correct selection is worth one point.

Values

Answer Area

Category

DscReportStatus

Message

OperationName

Resource

ResultType

AzureDiagnostics

| where == "DscNodeStatus"

| where contains ""

| where != "Compliant"

- A. Mastered
- B. Not Mastered

Answer: A

Explanation:

https://learn.microsoft.com/fr-fr/azure/automation/automation-dsc-diagnostics

NEW QUESTION 337

Passing Certification Exams Made Easy

visit - https://www.2PassEasy.com

- (Topic 4)

You have a build pipeline in Azure Pipelines. You create a Slack App Integration.

You need to send build notifications to a Slack channel named #Development. What should you do first?

- A. Configure a service connection.
- B. Create a service hook subscription.
- C. Create a project-level notification.
- D. Create a global notification.

Answer: B

Explanation:

Create a service hook for Azure DevOps with Slack to post messages to Slack in response to events in your Azure DevOps organization, such as completed builds, code changes, pull requests, releases, work items changes, and more.

Note:

- * 1. Go to your project Service Hooks page: https://{orgName}/{project_name}/_settings/serviceHooksSelect Create Subscription.
- * 3. Choose the types of events you want to appear in your Slack channel.
- * 4. Paste the Web Hook URL from the Slack integration that you created and select Finish.
- * 5. Now, when the event you configured occurs in your project, a notification appears in your team's Slack channel.

Reference:

<https://docs.microsoft.com/en-us/azure/devops/service-hooks/services/slack>

NEW QUESTION 342

.....

THANKS FOR TRYING THE DEMO OF OUR PRODUCT

Visit Our Site to Purchase the Full Set of Actual AZ-400 Exam Questions With Answers.

We Also Provide Practice Exam Software That Simulates Real Exam Environment And Has Many Self-Assessment Features. Order the AZ-400 Product From:

<https://www.2passeasy.com/dumps/AZ-400/>

Money Back Guarantee

AZ-400 Practice Exam Features:

- * AZ-400 Questions and Answers Updated Frequently
- * AZ-400 Practice Questions Verified by Expert Senior Certified Staff
- * AZ-400 Most Realistic Questions that Guarantee you a Pass on Your FirstTry
- * AZ-400 Practice Test Questions in Multiple Choice Formats and Updatesfor 1 Year