



**ISC2**

## **Exam Questions CISSP**

Certified Information Systems Security Professional (CISSP)

#### NEW QUESTION 1

- (Exam Topic 1)

Which of the following types of technologies would be the MOST cost-effective method to provide a reactive control for protecting personnel in public areas?

- A. Install mantraps at the building entrances
- B. Enclose the personnel entry area with polycarbonate plastic
- C. Supply a duress alarm for personnel exposed to the public
- D. Hire a guard to protect the public area

**Answer:** D

#### NEW QUESTION 2

- (Exam Topic 2)

In a data classification scheme, the data is owned by the

- A. system security managers
- B. business managers
- C. Information Technology (IT) managers
- D. end users

**Answer:** B

#### NEW QUESTION 3

- (Exam Topic 2)

Which of the following is an initial consideration when developing an information security management system?

- A. Identify the contractual security obligations that apply to the organizations
- B. Understand the value of the information assets
- C. Identify the level of residual risk that is tolerable to management
- D. Identify relevant legislative and regulatory compliance requirements

**Answer:** B

#### NEW QUESTION 4

- (Exam Topic 2)

Which of the following is an effective control in preventing electronic cloning of Radio Frequency Identification (RFID) based access cards?

- A. Personal Identity Verification (PIV)
- B. Cardholder Unique Identifier (CHUID) authentication
- C. Physical Access Control System (PACS) repeated attempt detection
- D. Asymmetric Card Authentication Key (CAK) challenge-response

**Answer:** C

#### NEW QUESTION 5

- (Exam Topic 2)

Which of the following is MOST important when assigning ownership of an asset to a department?

- A. The department should report to the business owner
- B. Ownership of the asset should be periodically reviewed
- C. Individual accountability should be ensured
- D. All members should be trained on their responsibilities

**Answer:** B

#### NEW QUESTION 6

- (Exam Topic 3)

Which technique can be used to make an encryption scheme more resistant to a known plaintext attack?

- A. Hashing the data before encryption
- B. Hashing the data after encryption
- C. Compressing the data after encryption
- D. Compressing the data before encryption

**Answer:** A

#### NEW QUESTION 7

- (Exam Topic 3)

The use of private and public encryption keys is fundamental in the implementation of which of the following?

- A. Diffie-Hellman algorithm
- B. Secure Sockets Layer (SSL)
- C. Advanced Encryption Standard (AES)
- D. Message Digest 5 (MD5)

**Answer:** A

**NEW QUESTION 8**

- (Exam Topic 3)

What is the second phase of Public Key Infrastructure (PKI) key/certificate life-cycle management?

- A. Implementation Phase
- B. Initialization Phase
- C. Cancellation Phase
- D. Issued Phase

**Answer:** D

**NEW QUESTION 9**

- (Exam Topic 4)

Which of the following operates at the Network Layer of the Open System Interconnection (OSI) model?

- A. Packet filtering
- B. Port services filtering
- C. Content filtering
- D. Application access control

**Answer:** A

**NEW QUESTION 10**

- (Exam Topic 4)

An external attacker has compromised an organization's network security perimeter and installed a sniffer onto an inside computer. Which of the following is the MOST effective layer of security the organization could have implemented to mitigate the attacker's ability to gain further information?

- A. Implement packet filtering on the network firewalls
- B. Install Host Based Intrusion Detection Systems (HIDS)
- C. Require strong authentication for administrators
- D. Implement logical network segmentation at the switches

**Answer:** D

**NEW QUESTION 10**

- (Exam Topic 4)

In a Transmission Control Protocol/Internet Protocol (TCP/IP) stack, which layer is responsible for negotiating and establishing a connection with another node?

- A. Transport layer
- B. Application layer
- C. Network layer
- D. Session layer

**Answer:** A

**NEW QUESTION 14**

- (Exam Topic 4)

At what level of the Open System Interconnection (OSI) model is data at rest on a Storage Area Network (SAN) located?

- A. Link layer
- B. Physical layer
- C. Session layer
- D. Application layer

**Answer:** D

**NEW QUESTION 16**

- (Exam Topic 5)

A manufacturing organization wants to establish a Federated Identity Management (FIM) system with its 20 different supplier companies. Which of the following is the BEST solution for the manufacturing organization?

- A. Trusted third-party certification
- B. Lightweight Directory Access Protocol (LDAP)
- C. Security Assertion Markup language (SAML)
- D. Cross-certification

**Answer:** C

**NEW QUESTION 17**

- (Exam Topic 6)

Which of the following could cause a Denial of Service (DoS) against an authentication system?

- A. Encryption of audit logs

- B. No archiving of audit logs
- C. Hashing of audit logs
- D. Remote access audit logs

**Answer:** D

#### NEW QUESTION 19

- (Exam Topic 6)

Which of the following is a PRIMARY benefit of using a formalized security testing report format and structure?

- A. Executive audiences will understand the outcomes of testing and most appropriate next steps for corrective actions to be taken
- B. Technical teams will understand the testing objectives, testing strategies applied, and business risk associated with each vulnerability
- C. Management teams will understand the testing objectives and reputational risk to the organization
- D. Technical and management teams will better understand the testing objectives, results of each test phase, and potential impact levels

**Answer:** D

#### NEW QUESTION 20

- (Exam Topic 7)

Recovery strategies of a Disaster Recovery planning (DRIP) MUST be aligned with which of the following?

- A. Hardware and software compatibility issues
- B. Applications' critically and downtime tolerance
- C. Budget constraints and requirements
- D. Cost/benefit analysis and business objectives

**Answer:** D

#### NEW QUESTION 22

- (Exam Topic 7)

What would be the MOST cost effective solution for a Disaster Recovery (DR) site given that the organization's systems cannot be unavailable for more than 24 hours?

- A. Warm site
- B. Hot site
- C. Mirror site
- D. Cold site

**Answer:** A

#### NEW QUESTION 26

- (Exam Topic 7)

An organization is found lacking the ability to properly establish performance indicators for its Web hosting solution during an audit. What would be the MOST probable cause?

- A. Absence of a Business Intelligence (BI) solution
- B. Inadequate cost modeling
- C. Improper deployment of the Service-Oriented Architecture (SOA)
- D. Insufficient Service Level Agreement (SLA)

**Answer:** D

#### NEW QUESTION 31

- (Exam Topic 7)

With what frequency should monitoring of a control occur when implementing Information Security Continuous Monitoring (ISCM) solutions?

- A. Continuously without exception for all security controls
- B. Before and after each change of the control
- C. At a rate concurrent with the volatility of the security control
- D. Only during system implementation and decommissioning

**Answer:** B

#### NEW QUESTION 34

- (Exam Topic 7)

Which of the following types of business continuity tests includes assessment of resilience to internal and external risks without endangering live operations?

- A. Walkthrough
- B. Simulation
- C. Parallel
- D. White box

**Answer:** B

#### NEW QUESTION 38

- (Exam Topic 7)

When is a Business Continuity Plan (BCP) considered to be valid?

- A. When it has been validated by the Business Continuity (BC) manager
- B. When it has been validated by the board of directors
- C. When it has been validated by all threat scenarios
- D. When it has been validated by realistic exercises

**Answer:** D

#### NEW QUESTION 42

- (Exam Topic 7)

What should be the FIRST action to protect the chain of evidence when a desktop computer is involved?

- A. Take the computer to a forensic lab
- B. Make a copy of the hard drive
- C. Start documenting
- D. Turn off the computer

**Answer:** C

#### NEW QUESTION 43

- (Exam Topic 8)

What is the BEST approach to addressing security issues in legacy web applications?

- A. Debug the security issues
- B. Migrate to newer, supported applications where possible
- C. Conduct a security assessment
- D. Protect the legacy application with a web application firewall

**Answer:** D

#### NEW QUESTION 44

- (Exam Topic 8)

Which of the following is the PRIMARY risk with using open source software in a commercial software construction?

- A. Lack of software documentation
- B. License agreements requiring release of modified code
- C. Expiration of the license agreement
- D. Costs associated with support of the software

**Answer:** D

#### NEW QUESTION 48

- (Exam Topic 9)

What is the FIRST step in developing a security test and its evaluation?

- A. Determine testing methods
- B. Develop testing procedures
- C. Identify all applicable security requirements
- D. Identify people, processes, and products not in compliance

**Answer:** C

#### NEW QUESTION 49

- (Exam Topic 9)

The three PRIMARY requirements for a penetration test are

- A. A defined goal, limited time period, and approval of management
- B. A general objective, unlimited time, and approval of the network administrator
- C. An objective statement, disclosed methodology, and fixed cost
- D. A stated objective, liability waiver, and disclosed methodology

**Answer:** A

#### NEW QUESTION 52

- (Exam Topic 9)

Which of the following is the FIRST action that a system administrator should take when it is revealed during a penetration test that everyone in an organization has unauthorized access to a server holding sensitive data?

- A. Immediately document the finding and report to senior management.
- B. Use system privileges to alter the permissions to secure the server
- C. Continue the testing to its completion and then inform IT management
- D. Terminate the penetration test and pass the finding to the server management team

**Answer:** A

#### NEW QUESTION 54

- (Exam Topic 9)

Which of the following is ensured when hashing files during chain of custody handling?

- A. Availability
- B. Accountability
- C. Integrity
- D. Non-repudiation

**Answer:** C

#### NEW QUESTION 57

- (Exam Topic 9)

Logical access control programs are MOST effective when they are

- A. approved by external auditors.
- B. combined with security token technology.
- C. maintained by computer security officers.
- D. made part of the operating system.

**Answer:** D

#### NEW QUESTION 58

- (Exam Topic 9)

Which one of the following is a threat related to the use of web-based client side input validation?

- A. Users would be able to alter the input after validation has occurred
- B. The web server would not be able to validate the input after transmission
- C. The client system could receive invalid input from the web server
- D. The web server would not be able to receive invalid input from the client

**Answer:** A

#### NEW QUESTION 61

- (Exam Topic 9)

Contingency plan exercises are intended to do which of the following?

- A. Train personnel in roles and responsibilities
- B. Validate service level agreements
- C. Train maintenance personnel
- D. Validate operation metrics

**Answer:** A

#### NEW QUESTION 66

- (Exam Topic 9)

In the area of disaster planning and recovery, what strategy entails the presentation of information about the plan?

- A. Communication
- B. Planning
- C. Recovery
- D. Escalation

**Answer:** A

#### NEW QUESTION 71

- (Exam Topic 9)

Which of the following is a physical security control that protects Automated Teller Machines (ATM) from skimming?

- A. Anti-tampering
- B. Secure card reader
- C. Radio Frequency (RF) scanner
- D. Intrusion Prevention System (IPS)

**Answer:** A

#### NEW QUESTION 72

- (Exam Topic 9)

The key benefits of a signed and encrypted e-mail include

- A. confidentiality, authentication, and authorization.
- B. confidentiality, non-repudiation, and authentication.
- C. non-repudiation, authorization, and authentication.
- D. non-repudiation, confidentiality, and authorization.

**Answer:** B

#### NEW QUESTION 74

- (Exam Topic 9)

What technique BEST describes antivirus software that detects viruses by watching anomalous behavior?

- A. Signature
- B. Inference
- C. Induction
- D. Heuristic

**Answer:** D

#### NEW QUESTION 78

- (Exam Topic 9)

An internal Service Level Agreement (SLA) covering security is signed by senior managers and is in place. When should compliance to the SLA be reviewed to ensure that a good security posture is being delivered?

- A. As part of the SLA renewal process
- B. Prior to a planned security audit
- C. Immediately after a security breach
- D. At regularly scheduled meetings

**Answer:** D

#### NEW QUESTION 80

- (Exam Topic 9)

What is the term commonly used to refer to a technique of authenticating one machine to another by forging packets from a trusted source?

- A. Man-in-the-Middle (MITM) attack
- B. Smurfing
- C. Session redirect
- D. Spoofing

**Answer:** D

#### NEW QUESTION 84

- (Exam Topic 9)

The overall goal of a penetration test is to determine a system's

- A. ability to withstand an attack.
- B. capacity management.
- C. error recovery capabilities.
- D. reliability under stress.

**Answer:** A

#### NEW QUESTION 86

- (Exam Topic 9)

Including a Trusted Platform Module (TPM) in the design of a computer system is an example of a technique to what?

- A. Interface with the Public Key Infrastructure (PKI)
- B. Improve the quality of security software
- C. Prevent Denial of Service (DoS) attacks
- D. Establish a secure initial state

**Answer:** D

#### NEW QUESTION 91

- (Exam Topic 9)

Which one of these risk factors would be the LEAST important consideration in choosing a building site for a new computer facility?

- A. Vulnerability to crime
- B. Adjacent buildings and businesses
- C. Proximity to an airline flight path
- D. Vulnerability to natural disasters

**Answer:** C

#### NEW QUESTION 93

- (Exam Topic 9)

An advantage of link encryption in a communications network is that it

- A. makes key management and distribution easier.
- B. protects data from start to finish through the entire network.
- C. improves the efficiency of the transmission.
- D. encrypts all information, including headers and routing information.



**Answer:** D

**NEW QUESTION 94**

- (Exam Topic 9)

Which of the following is an attacker MOST likely to target to gain privileged access to a system?

- A. Programs that write to system resources
- B. Programs that write to user directories
- C. Log files containing sensitive information
- D. Log files containing system calls

**Answer:** A

**NEW QUESTION 99**

- (Exam Topic 9)

The process of mutual authentication involves a computer system authenticating a user and authenticating the

- A. user to the audit process.
- B. computer system to the user.
- C. user's access to all authorized objects.
- D. computer system to the audit process.

**Answer:** B

**NEW QUESTION 100**

- (Exam Topic 9)

How can a forensic specialist exclude from examination a large percentage of operating system files residing on a copy of the target system?

- A. Take another backup of the media in question then delete all irrelevant operating system files.
- B. Create a comparison database of cryptographic hashes of the files from a system with the same operating system and patch level.
- C. Generate a message digest (MD) or secure hash on the drive image to detect tampering of the media being examined.
- D. Discard harmless files for the operating system, and known installed programs.

**Answer:** B

**NEW QUESTION 101**

- (Exam Topic 9)

In a financial institution, who has the responsibility for assigning the classification to a piece of information?

- A. Chief Financial Officer (CFO)
- B. Chief Information Security Officer (CISO)
- C. Originator or nominated owner of the information
- D. Department head responsible for ensuring the protection of the information

**Answer:** C

**NEW QUESTION 102**

- (Exam Topic 9)

What security management control is MOST often broken by collusion?

- A. Job rotation
- B. Separation of duties
- C. Least privilege model
- D. Increased monitoring

**Answer:** B

**NEW QUESTION 105**

- (Exam Topic 9)

When building a data center, site location and construction factors that increase the level of vulnerability to physical threats include

- A. hardened building construction with consideration of seismic factors.
- B. adequate distance from and lack of access to adjacent buildings.
- C. curved roads approaching the data center.
- D. proximity to high crime areas of the city.

**Answer:** D

**NEW QUESTION 110**

- (Exam Topic 9)

Which of the following is a strategy of grouping requirements in developing a Security Test and Evaluation (ST&E)?

- A. Standards, policies, and procedures
- B. Tactical, strategic, and financial
- C. Management, operational, and technical



D. Documentation, observation, and manual

**Answer:** C

#### NEW QUESTION 115

- (Exam Topic 9)

The PRIMARY purpose of a security awareness program is to

- A. ensure that everyone understands the organization's policies and procedures.
- B. communicate that access to information will be granted on a need-to-know basis.
- C. warn all users that access to all systems will be monitored on a daily basis.
- D. comply with regulations related to data and information protection.

**Answer:** A

#### NEW QUESTION 116

- (Exam Topic 9)

Which of the following is an essential element of a privileged identity lifecycle management?

- A. Regularly perform account re-validation and approval
- B. Account provisioning based on multi-factor authentication
- C. Frequently review performed activities and request justification
- D. Account information to be provided by supervisor or line manager

**Answer:** A

#### NEW QUESTION 119

- (Exam Topic 9)

Which one of the following security mechanisms provides the BEST way to restrict the execution of privileged procedures?

- A. Role Based Access Control (RBAC)
- B. Biometric access control
- C. Federated Identity Management (IdM)
- D. Application hardening

**Answer:** A

#### NEW QUESTION 120

- (Exam Topic 9)

Which of the following methods protects Personally Identifiable Information (PII) by use of a full replacement of the data element?

- A. Transparent Database Encryption (TDE)
- B. Column level database encryption
- C. Volume encryption
- D. Data tokenization

**Answer:** D

#### NEW QUESTION 125

- (Exam Topic 9)

Which of the following statements is TRUE for point-to-point microwave transmissions?

- A. They are not subject to interception due to encryption.
- B. Interception only depends on signal strength.
- C. They are too highly multiplexed for meaningful interception.
- D. They are subject to interception by an antenna within proximity.

**Answer:** D

#### NEW QUESTION 126

- (Exam Topic 9)

Which of the following is the BEST way to verify the integrity of a software patch?

- A. Cryptographic checksums
- B. Version numbering
- C. Automatic updates
- D. Vendor assurance

**Answer:** A

#### NEW QUESTION 127

- (Exam Topic 9)

The FIRST step in building a firewall is to

- A. assign the roles and responsibilities of the firewall administrators.

- B. define the intended audience who will read the firewall policy.
- C. identify mechanisms to encourage compliance with the policy.
- D. perform a risk analysis to identify issues to be addressed.

**Answer:** D

#### NEW QUESTION 131

- (Exam Topic 9)

Which of the following is TRUE about Disaster Recovery Plan (DRP) testing?

- A. Operational networks are usually shut down during testing.
- B. Testing should continue even if components of the test fail.
- C. The company is fully prepared for a disaster if all tests pass.
- D. Testing should not be done until the entire disaster plan can be tested.

**Answer:** B

#### NEW QUESTION 133

- (Exam Topic 9)

Which one of the following describes granularity?

- A. Maximum number of entries available in an Access Control List (ACL)
- B. Fineness to which a trusted system can authenticate users
- C. Number of violations divided by the number of total accesses
- D. Fineness to which an access control system can be adjusted

**Answer:** D

#### NEW QUESTION 137

- (Exam Topic 9)

Which of the following is the MOST important consideration when storing and processing Personally Identifiable Information (PII)?

- A. Encrypt and hash all PII to avoid disclosure and tampering.
- B. Store PII for no more than one year.
- C. Avoid storing PII in a Cloud Service Provider.
- D. Adherence to collection limitation laws and regulations.

**Answer:** D

#### NEW QUESTION 139

- (Exam Topic 9)

What would be the PRIMARY concern when designing and coordinating a security assessment for an Automatic Teller Machine (ATM) system?

- A. Physical access to the electronic hardware
- B. Regularly scheduled maintenance process
- C. Availability of the network connection
- D. Processing delays

**Answer:** A

#### NEW QUESTION 142

- (Exam Topic 9)

An external attacker has compromised an organization's network security perimeter and installed a sniffer onto an inside computer. Which of the following is the MOST effective layer of security the organization could have implemented to mitigate the attacker's ability to gain further information?

- A. Implement packet filtering on the network firewalls
- B. Require strong authentication for administrators
- C. Install Host Based Intrusion Detection Systems (HIDS)
- D. Implement logical network segmentation at the switches

**Answer:** D

#### NEW QUESTION 145

- (Exam Topic 9)

Which of the following is a security limitation of File Transfer Protocol (FTP)?

- A. Passive FTP is not compatible with web browsers.
- B. Anonymous access is allowed.
- C. FTP uses Transmission Control Protocol (TCP) ports 20 and 21.
- D. Authentication is not encrypted.

**Answer:** D

#### NEW QUESTION 149

- (Exam Topic 9)

In Business Continuity Planning (BCP), what is the importance of documenting business processes?

- A. Provides senior management with decision-making tools
- B. Establishes and adopts ongoing testing and maintenance strategies
- C. Defines who will perform which functions during a disaster or emergency
- D. Provides an understanding of the organization's interdependencies

**Answer:** D

#### NEW QUESTION 151

- (Exam Topic 9)

A security consultant has been asked to research an organization's legal obligations to protect privacy-related information. What kind of reading material is MOST relevant to this project?

- A. The organization's current security policies concerning privacy issues
- B. Privacy-related regulations enforced by governing bodies applicable to the organization
- C. Privacy best practices published by recognized security standards organizations
- D. Organizational procedures designed to protect privacy information

**Answer:** B

#### NEW QUESTION 153

- (Exam Topic 9)

The Hardware Abstraction Layer (HAL) is implemented in the

- A. system software.
- B. system hardware.
- C. application software.
- D. network hardware.

**Answer:** A

#### NEW QUESTION 155

- (Exam Topic 9)

A disadvantage of an application filtering firewall is that it can lead to

- A. a crash of the network as a result of user activities.
- B. performance degradation due to the rules applied.
- C. loss of packets on the network due to insufficient bandwidth.
- D. Internet Protocol (IP) spoofing by hackers.

**Answer:** B

#### NEW QUESTION 159

- (Exam Topic 9)

Which of the following elements MUST a compliant EU-US Safe Harbor Privacy Policy contain?

- A. An Explanation: of how long the data subject's collected information will be retained for and how it will be eventually disposed.
- B. An Explanation: of who can be contacted at the organization collecting the information if corrections are required by the data subject.
- C. An Explanation: of the regulatory frameworks and compliance standards the information collecting organization adheres to.
- D. An Explanation: of all the technologies employed by the collecting organization in gathering information on the data subject.

**Answer:** B

#### NEW QUESTION 160

- (Exam Topic 9)

In a basic SYN flood attack, what is the attacker attempting to achieve?

- A. Exceed the threshold limit of the connection queue for a given service
- B. Set the threshold to zero for a given service
- C. Cause the buffer to overflow, allowing root access
- D. Flush the register stack, allowing hijacking of the root account

**Answer:** A

#### NEW QUESTION 163

- (Exam Topic 9)

What is the ultimate objective of information classification?

- A. To assign responsibility for mitigating the risk to vulnerable systems
- B. To ensure that information assets receive an appropriate level of protection
- C. To recognize that the value of any item of information may change over time
- D. To recognize the optimal number of classification categories and the benefits to be gained from their use

**Answer:** B

#### NEW QUESTION 167

- (Exam Topic 9)

Following the completion of a network security assessment, which of the following can BEST be demonstrated?

- A. The effectiveness of controls can be accurately measured
- B. A penetration test of the network will fail
- C. The network is compliant to industry standards
- D. All unpatched vulnerabilities have been identified

**Answer:** A

#### NEW QUESTION 169

- (Exam Topic 9)

In a data classification scheme, the data is owned by the

- A. Information Technology (IT) managers.
- B. business managers.
- C. end users.
- D. system security managers.

**Answer:** B

#### NEW QUESTION 170

- (Exam Topic 9)

When implementing controls in a heterogeneous end-point network for an organization, it is critical that

- A. hosts are able to establish network communications.
- B. users can make modifications to their security software configurations.
- C. common software security components be implemented across all hosts.
- D. firewalls running on each host are fully customizable by the user.

**Answer:** C

#### NEW QUESTION 174

- (Exam Topic 9)

While impersonating an Information Security Officer (ISO), an attacker obtains information from company employees about their User IDs and passwords. Which method of information gathering has the attacker used?

- A. Trusted path
- B. Malicious logic
- C. Social engineering
- D. Passive misuse

**Answer:** C

#### NEW QUESTION 179

- (Exam Topic 9)

Why MUST a Kerberos server be well protected from unauthorized access?

- A. It contains the keys of all clients.
- B. It always operates at root privilege.
- C. It contains all the tickets for services.
- D. It contains the Internet Protocol (IP) address of all network entities.

**Answer:** A

#### NEW QUESTION 181

- (Exam Topic 9)

A software scanner identifies a region within a binary image having high entropy. What does this MOST likely indicate?

- A. Encryption routines
- B. Random number generator
- C. Obfuscated code
- D. Botnet command and control

**Answer:** C

#### NEW QUESTION 184

- (Exam Topic 9)

Who must approve modifications to an organization's production infrastructure configuration?

- A. Technical management
- B. Change control board
- C. System operations
- D. System users

**Answer:**

B

#### NEW QUESTION 185

- (Exam Topic 9)

Which of the following is a potential risk when a program runs in privileged mode?

- A. It may serve to create unnecessary code complexity
- B. It may not enforce job separation duties
- C. It may create unnecessary application hardening
- D. It may allow malicious code to be inserted

**Answer:** D

#### NEW QUESTION 187

- (Exam Topic 9)

Passive Infrared Sensors (PIR) used in a non-climate controlled environment should

- A. reduce the detected object temperature in relation to the background temperature.
- B. increase the detected object temperature in relation to the background temperature.
- C. automatically compensate for variance in background temperature.
- D. detect objects of a specific temperature independent of the background temperature.

**Answer:** C

#### NEW QUESTION 192

- (Exam Topic 9)

Which of the following is the BEST mitigation from phishing attacks?

- A. Network activity monitoring
- B. Security awareness training
- C. Corporate policy and procedures
- D. Strong file and directory permissions

**Answer:** B

#### NEW QUESTION 194

- (Exam Topic 9)

A system has been scanned for vulnerabilities and has been found to contain a number of communication ports that have been opened without authority. To which of the following might this system have been subjected?

- A. Trojan horse
- B. Denial of Service (DoS)
- C. Spoofing
- D. Man-in-the-Middle (MITM)

**Answer:** A

#### NEW QUESTION 199

- (Exam Topic 9)

Why must all users be positively identified prior to using multi-user computers?

- A. To provide access to system privileges
- B. To provide access to the operating system
- C. To ensure that unauthorized persons cannot access the computers
- D. To ensure that management knows what users are currently logged on

**Answer:** C

#### NEW QUESTION 201

- (Exam Topic 9)

An engineer in a software company has created a virus creation tool. The tool can generate thousands of polymorphic viruses. The engineer is planning to use the tool in a controlled environment to test the company's next generation virus scanning software. Which would BEST describe the behavior of the engineer and why?

- A. The behavior is ethical because the tool will be used to create a better virus scanner.
- B. The behavior is ethical because any experienced programmer could create such a tool.
- C. The behavior is not ethical because creating any kind of virus is bad.
- D. The behavior is not ethical because such a tool could be leaked on the Internet.

**Answer:** A

#### NEW QUESTION 202

- (Exam Topic 9)

Which of the following Disaster Recovery (DR) sites is the MOST difficult to test?

- A. Hot site
- B. Cold site

- C. Warm site
- D. Mobile site

**Answer:** B

#### NEW QUESTION 204

- (Exam Topic 9)

Which of the following statements is TRUE of black box testing?

- A. Only the functional specifications are known to the test planner.
- B. Only the source code and the design documents are known to the test planner.
- C. Only the source code and functional specifications are known to the test planner.
- D. Only the design documents and the functional specifications are known to the test planner.

**Answer:** A

#### NEW QUESTION 209

- (Exam Topic 9)

Which Hyper Text Markup Language 5 (HTML5) option presents a security challenge for network data leakage prevention and/or monitoring?

- A. Cross Origin Resource Sharing (CORS)
- B. WebSockets
- C. Document Object Model (DOM) trees
- D. Web Interface Definition Language (IDL)

**Answer:** B

#### NEW QUESTION 213

- (Exam Topic 9)

At a MINIMUM, a formal review of any Disaster Recovery Plan (DRP) should be conducted

- A. monthly.
- B. quarterly.
- C. annually.
- D. bi-annually.

**Answer:** C

#### NEW QUESTION 216

- (Exam Topic 9)

In Disaster Recovery (DR) and business continuity training, which BEST describes a functional drill?

- A. A full-scale simulation of an emergency and the subsequent response functions
- B. A specific test by response teams of individual emergency response functions
- C. A functional evacuation of personnel
- D. An activation of the backup site

**Answer:** B

#### NEW QUESTION 220

- (Exam Topic 10)

What is the MAIN feature that onion routing networks offer?

- A. Non-repudiation
- B. Traceability
- C. Anonymity
- D. Resilience

**Answer:** C

#### NEW QUESTION 225

- (Exam Topic 10)

What do Capability Maturity Models (CMM) serve as a benchmark for in an organization?

- A. Experience in the industry
- B. Definition of security profiles
- C. Human resource planning efforts
- D. Procedures in systems development

**Answer:** D

#### NEW QUESTION 229

- (Exam Topic 10)

Refer to the information below to answer the question.

A new employee is given a laptop computer with full administrator access. This employee does not have a personal computer at home and has a child that uses



the computer to send and receive e-mail, search the web, and use instant messaging. The organization's Information Technology (IT) department discovers that a peer-to-peer program has been installed on the computer using the employee's access.

Which of the following solutions would have MOST likely detected the use of peer-to-peer programs when the computer was connected to the office network?

- A. Anti-virus software
- B. Intrusion Prevention System (IPS)
- C. Anti-spyware software
- D. Integrity checking software

**Answer:** B

#### NEW QUESTION 233

- (Exam Topic 10)

Which of the following describes the concept of a Single Sign-On (SSO) system?

- A. Users are authenticated to one system at a time.
- B. Users are identified to multiple systems with several credentials.
- C. Users are authenticated to multiple systems with one login.
- D. Only one user is using the system at a time.

**Answer:** C

#### NEW QUESTION 237

- (Exam Topic 10)

Which of the following provides effective management assurance for a Wireless Local Area Network (WLAN)?

- A. Maintaining an inventory of authorized Access Points (AP) and connecting devices
- B. Setting the radio frequency to the minimum range required
- C. Establishing a Virtual Private Network (VPN) tunnel between the WLAN client device and a VPN concentrator
- D. Verifying that all default passwords have been changed

**Answer:** A

#### NEW QUESTION 239

- (Exam Topic 10)

Refer to the information below to answer the question.

In a Multilevel Security (MLS) system, the following sensitivity labels are used in increasing levels of sensitivity: restricted, confidential, secret, top secret. Table A lists the clearance levels for four users, while Table B lists the security classes of four different files.

**Table A**

User	Clearance Level
A	Restricted
B	Confidential
C	Secret
D	Top Secret

**Table B**

Files	Security Class
1	Restricted
2	Confidential
3	Secret
4	Top Secret

Which of the following is true according to the star property (\*property)?

- A. User D can write to File 1
- B. User B can write to File 1
- C. User A can write to File 1
- D. User C can write to File 1

**Answer:** C

#### NEW QUESTION 240

- (Exam Topic 10)

An online retail company has formulated a record retention schedule for customer transactions. Which of the following is a valid reason a customer transaction is kept beyond the retention schedule?

- A. Pending legal hold
- B. Long term data mining needs
- C. Customer makes request to retain
- D. Useful for future business initiatives

**Answer:** A

#### NEW QUESTION 242

- (Exam Topic 10)

According to best practice, which of the following is required when implementing third party software in a production environment?

- A. Scan the application for vulnerabilities
- B. Contract the vendor for patching
- C. Negotiate end user application training
- D. Escrow a copy of the software



**Answer:** A

**NEW QUESTION 247**

- (Exam Topic 10)

Which item below is a federated identity standard?

- A. 802.11i
- B. Kerberos
- C. Lightweight Directory Access Protocol (LDAP)
- D. Security Assertion Markup Language (SAML)

**Answer:** D

**NEW QUESTION 248**

- (Exam Topic 10)

Which of the following assures that rules are followed in an identity management architecture?

- A. Policy database
- B. Digital signature
- C. Policy decision point
- D. Policy enforcement point

**Answer:** D

**NEW QUESTION 250**

- (Exam Topic 10)

Refer to the information below to answer the question.

A security practitioner detects client-based attacks on the organization's network. A plan will be necessary to address these concerns.

What MUST the plan include in order to reduce client-side exploitation?

- A. Approved web browsers
- B. Network firewall procedures
- C. Proxy configuration
- D. Employee education

**Answer:** D

**NEW QUESTION 255**

- (Exam Topic 10)

Multi-Factor Authentication (MFA) is necessary in many systems given common types of password attacks. Which of the following is a correct list of password attacks?

- A. Masquerading, salami, malware, polymorphism
- B. Brute force, dictionary, phishing, keylogger
- C. Zeus, netbus, rabbit, turtle
- D. Token, biometrics, IDS, DLP

**Answer:** B

**NEW QUESTION 258**

- (Exam Topic 10)

Refer to the information below to answer the question.

A large organization uses unique identifiers and requires them at the start of every system session. Application access is based on job classification. The organization is subject to periodic independent reviews of access controls and violations. The organization uses wired and wireless networks and remote access. The organization also uses secure connections to branch offices and secure backup and recovery strategies for selected information and processes.

What MUST the access control logs contain in addition to the identifier?

- A. Time of the access
- B. Security classification
- C. Denied access attempts
- D. Associated clearance

**Answer:** A

**NEW QUESTION 262**

- (Exam Topic 10)

What is the MOST critical factor to achieve the goals of a security program?

- A. Capabilities of security resources
- B. Executive management support
- C. Effectiveness of security management
- D. Budget approved for security resources

**Answer:** B

**NEW QUESTION 264**

- (Exam Topic 10)

What is the BEST first step for determining if the appropriate security controls are in place for protecting data at rest?

- A. Identify regulatory requirements
- B. Conduct a risk assessment
- C. Determine business drivers
- D. Review the security baseline configuration

**Answer:** B

#### NEW QUESTION 267

- (Exam Topic 10)

What is a common challenge when implementing Security Assertion Markup Language (SAML) for identity integration between on-premise environment and an external identity provider service?

- A. Some users are not provisioned into the service.
- B. SAML tokens are provided by the on-premise identity provider.
- C. Single users cannot be revoked from the service.
- D. SAML tokens contain user information.

**Answer:** A

#### NEW QUESTION 272

- (Exam Topic 10)

A business has implemented Payment Card Industry Data Security Standard (PCI-DSS) compliant handheld credit card processing on their Wireless Local Area Network (WLAN) topology. The network team partitioned the WLAN to create a private segment for credit card processing using a firewall to control device access and route traffic to the card processor on the Internet. What components are in the scope of PCI-DSS?

- A. The entire enterprise network infrastructure.
- B. The handheld devices, wireless access points and border gateway.
- C. The end devices, wireless access points, WLAN, switches, management console, and firewall.
- D. The end devices, wireless access points, WLAN, switches, management console, and Internet

**Answer:** C

#### NEW QUESTION 274

- (Exam Topic 10)

A security manager has noticed an inconsistent application of server security controls resulting in vulnerabilities on critical systems. What is the MOST likely cause of this issue?

- A. A lack of baseline standards
- B. Improper documentation of security guidelines
- C. A poorly designed security policy communication program
- D. Host-based Intrusion Prevention System (HIPS) policies are ineffective

**Answer:** A

#### NEW QUESTION 279

- (Exam Topic 10)

Refer to the information below to answer the question.

During the investigation of a security incident, it is determined that an unauthorized individual accessed a system which hosts a database containing financial information.

If the intrusion causes the system processes to hang, which of the following has been affected?

- A. System integrity
- B. System availability
- C. System confidentiality
- D. System auditability

**Answer:** B

#### NEW QUESTION 280

- (Exam Topic 10)

Refer to the information below to answer the question.

A new employee is given a laptop computer with full administrator access. This employee does not have a personal computer at home and has a child that uses the computer to send and receive e-mail, search the web, and use instant messaging. The organization's Information Technology (IT) department discovers that a peer-to-peer program has been installed on the computer using the employee's access.

Which of the following documents explains the proper use of the organization's assets?

- A. Human resources policy
- B. Acceptable use policy
- C. Code of ethics
- D. Access control policy

**Answer:** B

#### NEW QUESTION 283

- (Exam Topic 10)

Which of the following actions MUST be taken if a vulnerability is discovered during the maintenance stage in a System Development Life Cycle (SDLC)?

- A. Make changes following principle and design guidelines.
- B. Stop the application until the vulnerability is fixed.
- C. Report the vulnerability to product owner.
- D. Monitor the application and review code.

**Answer:** C

#### NEW QUESTION 284

- (Exam Topic 10)

Refer to the information below to answer the question.

An organization experiencing a negative financial impact is forced to reduce budgets and the number of Information Technology (IT) operations staff performing basic logical access security administration functions. Security processes have been tightly integrated into normal IT operations and are not separate and distinct roles.

Which of the following will indicate where the IT budget is BEST allocated during this time?

- A. Policies
- B. Frameworks
- C. Metrics
- D. Guidelines

**Answer:** C

#### NEW QUESTION 288

- (Exam Topic 10)

During the procurement of a new information system, it was determined that some of the security requirements were not addressed in the system specification.

Which of the following is the MOST likely reason for this?

- A. The procurement officer lacks technical knowledge.
- B. The security requirements have changed during the procurement process.
- C. There were no security professionals in the vendor's bidding team.
- D. The description of the security requirements was insufficient.

**Answer:** D

#### NEW QUESTION 293

- (Exam Topic 10)

When is security personnel involvement in the Systems Development Life Cycle (SDLC) process MOST beneficial?

- A. Testing phase
- B. Development phase
- C. Requirements definition phase
- D. Operations and maintenance phase

**Answer:** C

#### NEW QUESTION 298

- (Exam Topic 10)

With data labeling, which of the following MUST be the key decision maker?

- A. Information security
- B. Departmental management
- C. Data custodian
- D. Data owner

**Answer:** D

#### NEW QUESTION 303

- (Exam Topic 10)

Which of the following is the MOST crucial for a successful audit plan?

- A. Defining the scope of the audit to be performed
- B. Identifying the security controls to be implemented
- C. Working with the system owner on new controls
- D. Acquiring evidence of systems that are not compliant

**Answer:** A

#### NEW QUESTION 306

- (Exam Topic 10)

A large bank deploys hardware tokens to all customers that use their online banking system. The token generates and displays a six digit numeric password every 60 seconds. The customers must log into their bank accounts using this numeric password. This is an example of

- A. asynchronous token.
- B. Single Sign-On (SSO) token.

- C. single factor authentication token.
- D. synchronous token.

**Answer:** D

#### NEW QUESTION 310

- (Exam Topic 10)

A system is developed so that its business users can perform business functions but not user administration functions. Application administrators can perform administration functions but not user business functions. These capabilities are BEST described as

- A. least privilege.
- B. rule based access controls.
- C. Mandatory Access Control (MAC).
- D. separation of duties.

**Answer:** D

#### NEW QUESTION 314

- (Exam Topic 10)

What is the BEST method to detect the most common improper initialization problems in programming languages?

- A. Use and specify a strong character encoding.
- B. Use automated static analysis tools that target this type of weakness.
- C. Perform input validation on any numeric inputs by assuring that they are within the expected range.
- D. Use data flow analysis to minimize the number of false positives.

**Answer:** B

#### NEW QUESTION 315

- (Exam Topic 10)

Which of the following problems is not addressed by using OAuth (Open Standard to Authorization) 2.0 to integrate a third-party identity provider for a service?

- A. Resource Servers are required to use passwords to authenticate end users.
- B. Revocation of access of some users of the third party instead of all the users from the third party.
- C. Compromise of the third party means compromise of all the users in the service.
- D. Guest users need to authenticate with the third party identity provider.

**Answer:** C

#### NEW QUESTION 316

- (Exam Topic 10)

Refer to the information below to answer the question.

A large organization uses unique identifiers and requires them at the start of every system session. Application access is based on job classification. The organization is subject to periodic independent reviews of access controls and violations. The organization uses wired and wireless networks and remote access. The organization also uses secure connections to branch offices and secure backup and recovery strategies for selected information and processes. Following best practice, where should the permitted access for each department and job classification combination be specified?

- A. Security procedures
- B. Security standards
- C. Human resource policy
- D. Human resource standards

**Answer:** B

#### NEW QUESTION 320

- (Exam Topic 10)

Refer to the information below to answer the question.

An organization has hired an information security officer to lead their security department. The officer has adequate people resources but is lacking the other necessary components to have an effective security program. There are numerous initiatives requiring security involvement. Given the number of priorities, which of the following will MOST likely influence the selection of top initiatives?

- A. Severity of risk
- B. Complexity of strategy
- C. Frequency of incidents
- D. Ongoing awareness

**Answer:** A

#### NEW QUESTION 325

- (Exam Topic 10)

Refer to the information below to answer the question.

A new employee is given a laptop computer with full administrator access. This employee does not have a personal computer at home and has a child that uses the computer to send and receive e-mail, search the web, and use instant messaging. The organization's Information Technology (IT) department discovers that a peer-to-peer program has been installed on the computer using the employee's access.

Which of the following could have MOST likely prevented the Peer-to-Peer (P2P) program from being installed on the computer?

- A. Removing employee's full access to the computer

- B. Supervising their child's use of the computer
- C. Limiting computer's access to only the employee
- D. Ensuring employee understands their business conduct guidelines

**Answer:** A

#### NEW QUESTION 328

- (Exam Topic 10)

Refer to the information below to answer the question.

A large organization uses unique identifiers and requires them at the start of every system session. Application access is based on job classification. The organization is subject to periodic independent reviews of access controls and violations. The organization uses wired and wireless networks and remote access. The organization also uses secure connections to branch offices and secure backup and recovery strategies for selected information and processes.

Which of the following BEST describes the access control methodology used?

- A. Least privilege
- B. Lattice Based Access Control (LBAC)
- C. Role Based Access Control (RBAC)
- D. Lightweight Directory Access Control (LDAP)

**Answer:** C

#### NEW QUESTION 330

- (Exam Topic 10)

Host-Based Intrusion Protection (HIPS) systems are often deployed in monitoring or learning mode during their initial implementation. What is the objective of starting in this mode?

- A. Automatically create exceptions for specific actions or files
- B. Determine which files are unsafe to access and blacklist them
- C. Automatically whitelist actions or files known to the system
- D. Build a baseline of normal or safe system events for review

**Answer:** D

#### NEW QUESTION 334

- (Exam Topic 10)

Place the following information classification steps in sequential order.

#### Steps

**Declassify information when appropriate**

**Apply the appropriate security markings**

**Conduct periodic classification reviews**

**Assign a classification level**

**Document the information assets**

#### Order

Step

Step

Step

Step

Step

- A. Mastered
- B. Not Mastered

**Answer:** A

**Explanation:**



## Steps

Declassify information when appropriate

Apply the appropriate security markings

Conduct periodic classification reviews

Assign a classification level

Document the information assets

Document the information assets

Assign a classification level

Apply the appropriate security markings

Conduct periodic classification reviews

Declassify information when appropriate

## Order

Step

Step

Step

Step

Step

### NEW QUESTION 335

- (Exam Topic 10)

Which of the following is the MAIN goal of a data retention policy?

- A. Ensure that data is destroyed properly.
- B. Ensure that data recovery can be done on the data.
- C. Ensure the integrity and availability of data for a predetermined amount of time.
- D. Ensure the integrity and confidentiality of data for a predetermined amount of time.

Answer: C

### NEW QUESTION 337

- (Exam Topic 10)

A large university needs to enable student access to university resources from their homes. Which of the following provides the BEST option for low maintenance and ease of deployment?

- A. Provide students with Internet Protocol Security (IPSec) Virtual Private Network (VPN) client software.
- B. Use Secure Sockets Layer (SSL) VPN technology.
- C. Use Secure Shell (SSH) with public/private keys.
- D. Require students to purchase home router capable of VPN.

Answer: B

### NEW QUESTION 342

- (Exam Topic 10)

Refer to the information below to answer the question.

In a Multilevel Security (MLS) system, the following sensitivity labels are used in increasing levels of sensitivity: restricted, confidential, secret, top secret. Table A lists the clearance levels for four users, while Table B lists the security classes of four different files.

Table A

User	Clearance Level
A	Restricted
B	Confidential
C	Secret
D	Top Secret

Table B

Files	Security Class
1	Restricted
2	Confidential
3	Secret
4	Top Secret

In a Bell-LaPadula system, which user has the MOST restrictions when writing data to any of the four files?

- A. User A
- B. User B
- C. User C
- D. User D

Answer: D

### NEW QUESTION 344

- (Exam Topic 10)

Refer to the information below to answer the question.

An organization has hired an information security officer to lead their security department. The officer has adequate people resources but is lacking the other necessary components to have an effective security program. There are numerous initiatives requiring security involvement. The security program can be considered effective when

- A. vulnerabilities are proactively identified.
- B. audits are regularly performed and reviewed.

- C. backups are regularly performed and validated.
- D. risk is lowered to an acceptable level.

**Answer:** D

#### NEW QUESTION 345

- (Exam Topic 10)

Refer to the information below to answer the question.

Desktop computers in an organization were sanitized for re-use in an equivalent security environment. The data was destroyed in accordance with organizational policy and all marking and other external indications of the sensitivity of the data that was formerly stored on the magnetic drives were removed. After magnetic drives were degaussed twice according to the product manufacturer's directions, what is the MOST LIKELY security issue with degaussing?

- A. Commercial products often have serious weaknesses of the magnetic force available in the degausser product.
- B. Degausser products may not be properly maintained and operated.
- C. The inability to turn the drive around in the chamber for the second pass due to human error.
- D. Inadequate record keeping when sanitizing media.

**Answer:** B

#### NEW QUESTION 349

- (Exam Topic 10)

For a service provider, which of the following MOST effectively addresses confidentiality concerns for customers using cloud computing?

- A. Hash functions
- B. Data segregation
- C. File system permissions
- D. Non-repudiation controls

**Answer:** B

#### NEW QUESTION 350

- (Exam Topic 10)

Which of the following secure startup mechanisms are PRIMARILY designed to thwart attacks?

- A. Timing
- B. Cold boot
- C. Side channel
- D. Acoustic cryptanalysis

**Answer:** B

#### NEW QUESTION 354

- (Exam Topic 10)

An organization's data policy MUST include a data retention period which is based on

- A. application dismissal.
- B. business procedures.
- C. digital certificates expiration.
- D. regulatory compliance.

**Answer:** D

#### NEW QUESTION 357

- (Exam Topic 10)

What is the PRIMARY reason for ethics awareness and related policy implementation?

- A. It affects the workflow of an organization.
- B. It affects the reputation of an organization.
- C. It affects the retention rate of employees.
- D. It affects the morale of the employees.

**Answer:** B

#### NEW QUESTION 362

- (Exam Topic 10)

Without proper signal protection, embedded systems may be prone to which type of attack?

- A. Brute force
- B. Tampering
- C. Information disclosure
- D. Denial of Service (DoS)

**Answer:** C

#### NEW QUESTION 365



- (Exam Topic 10)

An organization publishes and periodically updates its employee policies in a file on their intranet. Which of the following is a PRIMARY security concern?

- A. Availability
- B. Confidentiality
- C. Integrity
- D. Ownership

**Answer: C**

#### NEW QUESTION 367

- (Exam Topic 10)

During an audit, the auditor finds evidence of potentially illegal activity. Which of the following is the MOST appropriate action to take?

- A. Immediately call the police
- B. Work with the client to resolve the issue internally
- C. Advise the person performing the illegal activity to cease and desist
- D. Work with the client to report the activity to the appropriate authority

**Answer: D**

#### NEW QUESTION 371

- (Exam Topic 10)

When using third-party software developers, which of the following is the MOST effective method of providing software development Quality Assurance (QA)?

- A. Retain intellectual property rights through contractual wording.
- B. Perform overlapping code reviews by both parties.
- C. Verify that the contractors attend development planning meetings.
- D. Create a separate contractor development environment.

**Answer: B**

#### NEW QUESTION 374

- (Exam Topic 10)

Which of the following is the BEST countermeasure to brute force login attacks?

- A. Changing all canonical passwords
- B. Decreasing the number of concurrent user sessions
- C. Restricting initial password delivery only in person
- D. Introducing a delay after failed system access attempts

**Answer: D**

#### NEW QUESTION 376

- (Exam Topic 10)

Which of the following is critical for establishing an initial baseline for software components in the operation and maintenance of applications?

- A. Application monitoring procedures
- B. Configuration control procedures
- C. Security audit procedures
- D. Software patching procedures

**Answer: B**

#### NEW QUESTION 381

- (Exam Topic 10)

Refer to the information below to answer the question.

During the investigation of a security incident, it is determined that an unauthorized individual accessed a system which hosts a database containing financial information.

Aside from the potential records which may have been viewed, which of the following should be the PRIMARY concern regarding the database information?

- A. Unauthorized database changes
- B. Integrity of security logs
- C. Availability of the database
- D. Confidentiality of the incident

**Answer: A**

#### NEW QUESTION 384

- (Exam Topic 10)

Refer to the information below to answer the question.

Desktop computers in an organization were sanitized for re-use in an equivalent security environment. The data was destroyed in accordance with organizational policy and all marking and other external indications of the sensitivity of the data that was formerly stored on the magnetic drives were removed.

Organizational policy requires the deletion of user data from Personal Digital Assistant (PDA) devices before disposal. It may not be possible to delete the user data if the device is malfunctioning. Which destruction method below provides the BEST assurance that the data has been removed?

- A. Knurling

- B. Grinding
- C. Shredding
- D. Degaussing

**Answer:** C

#### NEW QUESTION 385

- (Exam Topic 11)

Which of the following is generally indicative of a replay attack when dealing with biometric authentication?

- A. False Acceptance Rate (FAR) is greater than 1 in 100,000
- B. False Rejection Rate (FRR) is greater than 5 in 100
- C. Inadequately specified templates
- D. Exact match

**Answer:** D

#### NEW QUESTION 387

- (Exam Topic 11)

If an identification process using a biometric system detects a 100% match between a presented template and a stored template, what is the interpretation of this result?

- A. User error
- B. Suspected tampering
- C. Accurate identification
- D. Unsuccessful identification

**Answer:** B

#### NEW QUESTION 392

- (Exam Topic 11)

A security professional has been asked to evaluate the options for the location of a new data center within a multifloor building. Concerns for the data center include emanations and physical access controls.

Which of the following is the BEST location?

- A. On the top floor
- B. In the basement
- C. In the core of the building
- D. In an exterior room with windows

**Answer:** C

#### NEW QUESTION 395

- (Exam Topic 11)

What is the GREATEST challenge to identifying data leaks?

- A. Available technical tools that enable user activity monitoring.
- B. Documented asset classification policy and clear labeling of assets.
- C. Senior management cooperation in investigating suspicious behavior.
- D. Law enforcement participation to apprehend and interrogate suspects.

**Answer:** B

#### NEW QUESTION 397

- (Exam Topic 11)

Which of the following is a function of Security Assertion Markup Language (SAML)?

- A. File allocation
- B. Redundancy check
- C. Extended validation
- D. Policy enforcement

**Answer:** D

#### NEW QUESTION 401

- (Exam Topic 11)

Which of the following statements is TRUE regarding state-based analysis as a functional software testing technique?

- A. It is useful for testing communications protocols and graphical user interfaces.
- B. It is characterized by the stateless behavior of a process implemented in a function.
- C. Test inputs are obtained from the derived boundaries of the given functional specifications.
- D. An entire partition can be covered by considering only one representative value from that partition.

**Answer:** A

#### NEW QUESTION 403

- (Exam Topic 11)

Data remanence refers to which of the following?

- A. The remaining photons left in a fiber optic cable after a secure transmission.
- B. The retention period required by law or regulation.
- C. The magnetic flux created when removing the network connection from a server or personal computer.
- D. The residual information left on magnetic storage media after a deletion or erasure.

**Answer:** D

#### NEW QUESTION 407

- (Exam Topic 11)

Which of the following is the BEST approach to take in order to effectively incorporate the concepts of business continuity into the organization?

- A. Ensure end users are aware of the planning activities
- B. Validate all regulatory requirements are known and fully documented
- C. Develop training and awareness programs that involve all stakeholders
- D. Ensure plans do not violate the organization's cultural objectives and goals

**Answer:** C

#### NEW QUESTION 409

- (Exam Topic 11)

Which of the following is the MOST important element of change management documentation?

- A. List of components involved
- B. Number of changes being made
- C. Business case justification
- D. A stakeholder communication

**Answer:** C

#### NEW QUESTION 410

- (Exam Topic 11)

What should happen when an emergency change to a system must be performed?

- A. The change must be given priority at the next meeting of the change control board.
- B. Testing and approvals must be performed quickly.
- C. The change must be performed immediately and then submitted to the change board.
- D. The change is performed and a notation is made in the system log.

**Answer:** B

#### NEW QUESTION 413

- (Exam Topic 11)

Which of the following is a reason to use manual patch installation instead of automated patch management?

- A. The cost required to install patches will be reduced.
- B. The time during which systems will remain vulnerable to an exploit will be decreased.
- C. The likelihood of system or application incompatibilities will be decreased.
- D. The ability to cover large geographic areas is increased.

**Answer:** C

#### NEW QUESTION 416

- (Exam Topic 11)

If compromised, which of the following would lead to the exploitation of multiple virtual machines?

- A. Virtual device drivers
- B. Virtual machine monitor
- C. Virtual machine instance
- D. Virtual machine file system

**Answer:** B

#### NEW QUESTION 421

- (Exam Topic 11)

A mobile device application that restricts the storage of user information to just that which is needed to accomplish lawful business goals adheres to what privacy principle?

- A. Onward transfer
- B. Collection Limitation
- C. Collector Accountability
- D. Individual Participation

**Answer:** B

#### NEW QUESTION 424

- (Exam Topic 11)

How does an organization verify that an information system's current hardware and software match the standard system configuration?

- A. By reviewing the configuration after the system goes into production
- B. By running vulnerability scanning tools on all devices in the environment
- C. By comparing the actual configuration of the system against the baseline
- D. By verifying all the approved security patches are implemented

**Answer:** C

#### NEW QUESTION 427

- (Exam Topic 11)

Disaster Recovery Plan (DRP) training material should be

- A. consistent so that all audiences receive the same training.
- B. stored in a fire proof safe to ensure availability when needed.
- C. only delivered in paper format.
- D. presented in a professional looking manner.

**Answer:** A

#### NEW QUESTION 430

- (Exam Topic 11)

Which of the following analyses is performed to protect information assets?

- A. Business impact analysis
- B. Feasibility analysis
- C. Cost benefit analysis
- D. Data analysis

**Answer:** A

#### NEW QUESTION 431

- (Exam Topic 11)

Which of the following is the MOST likely cause of a non-malicious data breach when the source of the data breach was an un-marked file cabinet containing sensitive documents?

- A. Ineffective data classification
- B. Lack of data access controls
- C. Ineffective identity management controls
- D. Lack of Data Loss Prevention (DLP) tools

**Answer:** A

#### NEW QUESTION 435

- (Exam Topic 11)

Which of the following entities is ultimately accountable for data remanence vulnerabilities with data replicated by a cloud service provider?

- A. Data owner
- B. Data steward
- C. Data custodian
- D. Data processor

**Answer:** A

#### NEW QUESTION 436

- (Exam Topic 11)

Which of the following is the BIGGEST weakness when using native Lightweight Directory Access Protocol (LDAP) for authentication?

- A. Authorizations are not included in the server response
- B. Unsalted hashes are passed over the network
- C. The authentication session can be replayed
- D. Passwords are passed in cleartext

**Answer:** D

#### NEW QUESTION 438

- (Exam Topic 11)

Single Sign-On (SSO) is PRIMARILY designed to address which of the following?

- A. Confidentiality and Integrity
- B. Availability and Accountability
- C. Integrity and Availability
- D. Accountability and Assurance

**Answer:**

D

#### NEW QUESTION 440

- (Exam Topic 11)

Which of the following standards/guidelines requires an Information Security Management System (ISMS) to be defined?

- A. International Organization for Standardization (ISO) 27000 family
- B. Information Technology Infrastructure Library (ITIL)
- C. Payment Card Industry Data Security Standard (PCIDSS)
- D. ISO/IEC 20000

**Answer:** A

#### NEW QUESTION 443

- (Exam Topic 11)

Which of the following roles has the obligation to ensure that a third party provider is capable of processing and handling data in a secure manner and meeting the standards set by the organization?

- A. Data Custodian
- B. Data Owner
- C. Data Creator
- D. Data User

**Answer:** B

#### NEW QUESTION 444

- (Exam Topic 11)

What is the MOST efficient way to secure a production program and its data?

- A. Disable default accounts and implement access control lists (ACL)
- B. Harden the application and encrypt the data
- C. Disable unused services and implement tunneling
- D. Harden the servers and backup the data

**Answer:** B

#### NEW QUESTION 446

- (Exam Topic 11)

An organization lacks a data retention policy. Of the following, who is the BEST person to consult for such requirement?

- A. Application Manager
- B. Database Administrator
- C. Privacy Officer
- D. Finance Manager

**Answer:** C

#### NEW QUESTION 447

- (Exam Topic 11)

Which of the following are Systems Engineering Life Cycle (SELC) Technical Processes?

- A. Concept, Development, Production, Utilization, Support, Retirement
- B. Stakeholder Requirements Definition, Architectural Design, Implementation, Verification, Operation
- C. Acquisition, Measurement, Configuration Management, Production, Operation, Support
- D. Concept, Requirements, Design, Implementation, Production, Maintenance, Support, Disposal

**Answer:** B

#### NEW QUESTION 450

- (Exam Topic 11)

The World Trade Organization's (WTO) agreement on Trade-Related Aspects of Intellectual Property Rights (TRIPS) requires authors of computer software to be given the

- A. right to refuse or permit commercial rentals.
- B. right to disguise the software's geographic origin.
- C. ability to tailor security parameters based on location.
- D. ability to confirm license authenticity of their works.

**Answer:** A

#### NEW QUESTION 455

- (Exam Topic 11)

An organization has hired a security services firm to conduct a penetration test. Which of the following will the organization provide to the tester?

- A. Limits and scope of the testing.
- B. Physical location of server room and wiring closet.

- C. Logical location of filters and concentrators.
- D. Employee directory and organizational chart.

**Answer:** A

#### NEW QUESTION 456

- (Exam Topic 11)

Which of the following is the PRIMARY security concern associated with the implementation of smart cards?

- A. The cards have limited memory
- B. Vendor application compatibility
- C. The cards can be misplaced
- D. Mobile code can be embedded in the card

**Answer:** C

#### NEW QUESTION 457

- (Exam Topic 11)

After acquiring the latest security updates, what must be done before deploying to production systems?

- A. Use tools to detect missing system patches
- B. Install the patches on a test system
- C. Subscribe to notifications for vulnerabilities
- D. Assess the severity of the situation

**Answer:** B

#### NEW QUESTION 459

- (Exam Topic 11)

Retaining system logs for six months or longer can be valuable for what activities?

- A. Disaster recovery and business continuity
- B. Forensics and incident response
- C. Identity and authorization management
- D. Physical and logical access control

**Answer:** B

#### NEW QUESTION 464

- (Exam Topic 11)

To protect auditable information, which of the following MUST be configured to only allow read access?

- A. Logging configurations
- B. Transaction log files
- C. User account configurations
- D. Access control lists (ACL)

**Answer:** B

#### NEW QUESTION 466

- (Exam Topic 11)

Which of the following is the BEST example of weak management commitment to the protection of security assets and resources?

- A. poor governance over security processes and procedures
- B. immature security controls and procedures
- C. variances against regulatory requirements
- D. unanticipated increases in security incidents and threats

**Answer:** A

#### NEW QUESTION 469

- (Exam Topic 11)

Which of the following explains why record destruction requirements are included in a data retention policy?

- A. To comply with legal and business requirements
- B. To save cost for storage and backup
- C. To meet destruction guidelines
- D. To validate data ownership

**Answer:** A

#### NEW QUESTION 474

- (Exam Topic 11)

The BEST example of the concept of "something that a user has" when providing an authorized user access to a computing system is



- A. the user's hand geometry.
- B. a credential stored in a token.
- C. a passphrase.
- D. the user's face.

**Answer:** B

**NEW QUESTION 479**

- (Exam Topic 11)

What type of encryption is used to protect sensitive data in transit over a network?

- A. Payload encryption and transport encryption
- B. Authentication Headers (AH)
- C. Keyed-Hashing for Message Authentication
- D. Point-to-Point Encryption (P2PE)

**Answer:** A

**NEW QUESTION 483**

- (Exam Topic 11)

An organization has developed a major application that has undergone accreditation testing. After receiving the results of the evaluation, what is the final step before the application can be accredited?

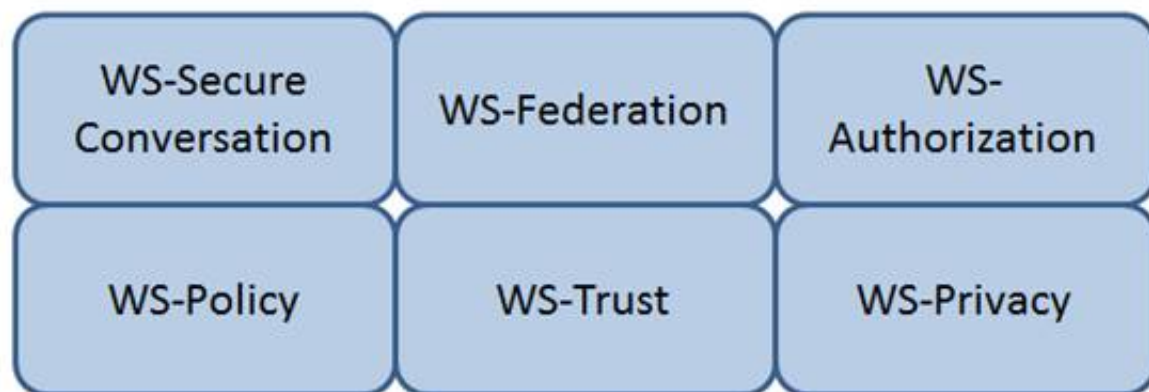
- A. Acceptance of risk by the authorizing official
- B. Remediation of vulnerabilities
- C. Adoption of standardized policies and procedures
- D. Approval of the System Security Plan (SSP)

**Answer:** A

**NEW QUESTION 485**

- (Exam Topic 11)

Which Web Services Security (WS-Security) specification maintains a single authenticated identity across multiple dissimilar environments? Click on the correct specification in the image below.



- A. Mastered
- B. Not Mastered

**Answer:** A

**Explanation:**

WS-Federation

Reference: Java Web Services: Up and Running" By Martin Kalin page 228

**NEW QUESTION 490**

- (Exam Topic 11)

Match the objectives to the assessment questions in the governance domain of Software Assurance Maturity Model (SAMM).



Secure Architecture		Do you advertise shared security services with guidance for project teams?
Education & Guidance		Are most people tested to ensure a baseline skill- set for secure development practices?
Strategy & Metrics		Does most of the organization know about what's required based on risk ratings?
Vulnerability Management		Are most project teams aware of their security point(s) of contact and response team(s)?

- A. Mastered  
B. Not Mastered

Answer: A

Explanation:

Secure Architecture	Secure Architecture	Do you advertise shared security services with guidance for project teams?
Education & Guidance	Education & Guidance	Are most people tested to ensure a baseline skill- set for secure development practices?
Strategy & Metrics	Strategy & Metrics	Does most of the organization know about what's required based on risk ratings?
Vulnerability Management	Vulnerability Management	Are most project teams aware of their security point(s) of contact and response team(s)?

NEW QUESTION 493

- (Exam Topic 11)

A security professional is asked to provide a solution that restricts a bank teller to only perform a savings deposit transaction but allows a supervisor to perform corrections after the transaction. Which of the following is the MOST effective solution?

- A. Access is based on rules.  
B. Access is determined by the system.  
C. Access is based on user's role.  
D. Access is based on data sensitivity.

Answer: C

NEW QUESTION 498

- (Exam Topic 11)

Which methodology is recommended for penetration testing to be effective in the development phase of the life-cycle process?

- A. White-box testing  
B. Software fuzz testing  
C. Black-box testing  
D. Visual testing

Answer: A

NEW QUESTION 500

- (Exam Topic 11)

The PRIMARY characteristic of a Distributed Denial of Service (DDoS) attack is that it

- A. exploits weak authentication to penetrate networks.  
B. can be detected with signature analysis.  
C. looks like normal network activity.  
D. is commonly confused with viruses or worms.

Answer: C

NEW QUESTION 502

- (Exam Topic 11)

Application of which of the following Institute of Electrical and Electronics Engineers (IEEE) standards will prevent an unauthorized wireless device from being attached to a network?

- A. IEEE 802.1F

- B. IEEE 802.1H
- C. IEEE 802.1Q
- D. IEEE 802.1X

**Answer:** D

#### NEW QUESTION 504

- (Exam Topic 11)

The PRIMARY security concern for handheld devices is the

- A. strength of the encryption algorithm.
- B. spread of malware during synchronization.
- C. ability to bypass the authentication mechanism.
- D. strength of the Personal Identification Number (PIN).

**Answer:** C

#### NEW QUESTION 508

- (Exam Topic 11)

Which of the following statements is TRUE regarding value boundary analysis as a functional software testing technique?

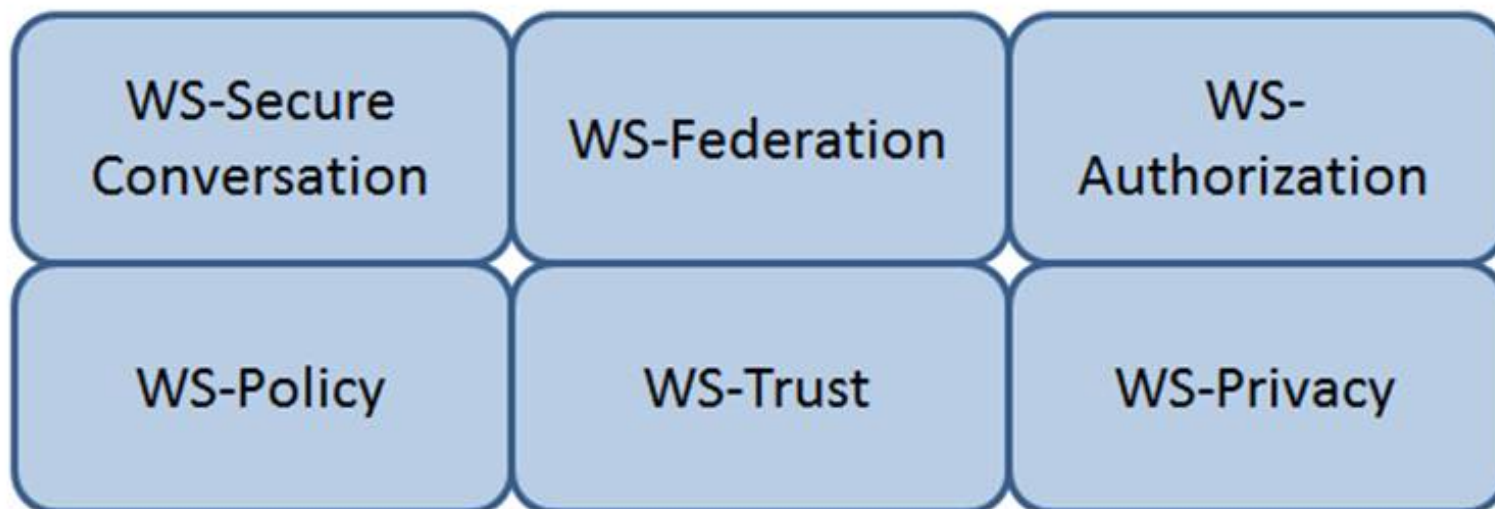
- A. It is useful for testing communications protocols and graphical user interfaces.
- B. It is characterized by the stateless behavior of a process implemented in a function.
- C. Test inputs are obtained from the derived threshold of the given functional specifications.
- D. An entire partition can be covered by considering only one representative value from that partition.

**Answer:** C

#### NEW QUESTION 510

- (Exam Topic 11)

Which Web Services Security (WS-Security) specification negotiates how security tokens will be issued, renewed and validated? Click on the correct specification in the image below.



- A. Mastered
- B. Not Mastered

**Answer:** A

#### Explanation:

WS-Trust

The protocol used for issuing security tokens is based on WS-Trust. WS-Trust is a Web service specification that builds on WS-Security. It describes a protocol used for issuance, exchange, and validation of security tokens. WS-Trust provides a solution for interoperability by defining a protocol for issuing and exchanging security tokens, based on token format, namespace, or trust boundaries.

Reference: <https://msdn.microsoft.com/en-us/library/ff650503.aspx>

#### NEW QUESTION 511

- (Exam Topic 11)

Sensitive customer data is going to be added to a database. What is the MOST effective implementation for ensuring data privacy?

- A. Discretionary Access Control (DAC) procedures
- B. Mandatory Access Control (MAC) procedures
- C. Data link encryption
- D. Segregation of duties

**Answer:** B

#### NEW QUESTION 515

- (Exam Topic 11)

Data leakage of sensitive information is MOST often concealed by which of the following?

- A. Secure Sockets Layer (SSL)
- B. Secure Hash Algorithm (SHA)
- C. Wired Equivalent Privacy (WEP)
- D. Secure Post Office Protocol (POP)

**Answer:** A

#### NEW QUESTION 516

- (Exam Topic 11)

What is one way to mitigate the risk of security flaws in custom software?

- A. Include security language in the Earned Value Management (EVM) contract
- B. Include security assurance clauses in the Service Level Agreement (SLA)
- C. Purchase only Commercial Off-The-Shelf (COTS) products
- D. Purchase only software with no open source Application Programming Interfaces (APIs)

**Answer:** B

#### NEW QUESTION 521

- (Exam Topic 11)

What does an organization FIRST review to assure compliance with privacy requirements?

- A. Best practices
- B. Business objectives
- C. Legal and regulatory mandates
- D. Employee's compliance to policies and standards

**Answer:** C

#### NEW QUESTION 522

- (Exam Topic 11)

Which one of the following operates at the session, transport, or network layer of the Open System Interconnection (OSI) model?

- A. Data at rest encryption
- B. Configuration Management
- C. Integrity checking software
- D. Cyclic redundancy check (CRC)

**Answer:** D

#### NEW QUESTION 524

- (Exam Topic 11)

What type of test assesses a Disaster Recovery (DR) plan using realistic disaster scenarios while maintaining minimal impact to business operations?

- A. Parallel
- B. Walkthrough
- C. Simulation
- D. Tabletop

**Answer:** C

#### NEW QUESTION 526

- (Exam Topic 11)

A network scan found 50% of the systems with one or more critical vulnerabilities. Which of the following represents the BEST action?

- A. Assess vulnerability risk and program effectiveness.
- B. Assess vulnerability risk and business impact.
- C. Disconnect all systems with critical vulnerabilities.
- D. Disconnect systems with the most number of vulnerabilities.

**Answer:** B

#### NEW QUESTION 528

- (Exam Topic 11)

When in the Software Development Life Cycle (SDLC) MUST software security functional requirements be defined?

- A. After the system preliminary design has been developed and the data security categorization has been performed
- B. After the business functional analysis and the data security categorization have been performed
- C. After the vulnerability analysis has been performed and before the system detailed design begins
- D. After the system preliminary design has been developed and before the data security categorization begins

**Answer: B**

#### NEW QUESTION 530

- (Exam Topic 11)

Who is ultimately responsible to ensure that information assets are categorized and adequate measures are taken to protect them?

- A. Data Custodian
- B. Executive Management
- C. Chief Information Security Officer
- D. Data/Information/Business Owners

**Answer: B**

#### NEW QUESTION 533

- (Exam Topic 11)

Which of the following BEST describes the purpose of the security functional requirements of Common Criteria?

- A. Level of assurance of the Target of Evaluation (TOE) in intended operational environment
- B. Selection to meet the security objectives stated in test documents
- C. Security behavior expected of a TOE
- D. Definition of the roles and responsibilities

**Answer: C**

#### NEW QUESTION 538

- (Exam Topic 11)

Which of the following protocols would allow an organization to maintain a centralized list of users that can read a protected webpage?

- A. Lightweight Directory Access Control (LDAP)
- B. Security Assertion Markup Language (SAML)
- C. Hypertext Transfer Protocol (HTTP)
- D. Kerberos

**Answer: A**

#### NEW QUESTION 543

- (Exam Topic 11)

Which of the following activities BEST identifies operational problems, security misconfigurations, and malicious attacks?

- A. Policy documentation review
- B. Authentication validation
- C. Periodic log reviews
- D. Interface testing

**Answer: C**

#### NEW QUESTION 548

- (Exam Topic 11)

In the Open System Interconnection (OSI) model, which layer is responsible for the transmission of binary data over a communications network?

- A. Application Layer
- B. Physical Layer
- C. Data-Link Layer
- D. Network Layer

**Answer: B**

#### NEW QUESTION 553

- (Exam Topic 11)

Which of the following secures web transactions at the Transport Layer?

- A. Secure HyperText Transfer Protocol (S-HTTP)
- B. Secure Sockets Layer (SSL)
- C. Socket Security (SOCKS)
- D. Secure Shell (SSH)

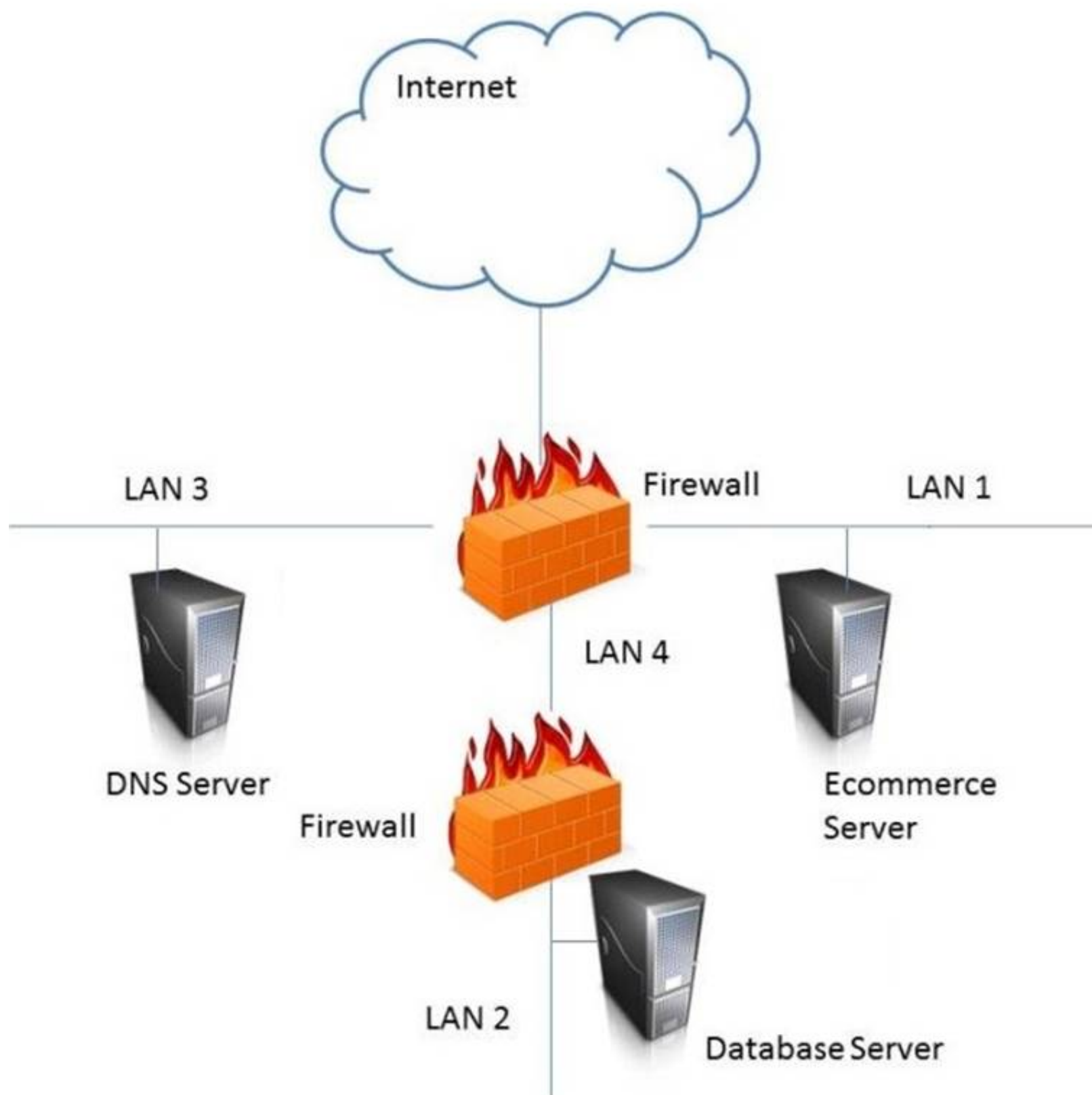
**Answer: B**



**NEW QUESTION 558**

- (Exam Topic 11)

In the network design below, where is the MOST secure Local Area Network (LAN) segment to deploy a Wireless Access Point (WAP) that provides contractors access to the Internet and authorized enterprise services?



- A. Mastered
- B. Not Mastered

**Answer: A**

**Explanation:**

LAN 4

**NEW QUESTION 559**

- (Exam Topic 11)

Which of the following is the PRIMARY issue when collecting detailed log information?

- A. Logs may be unavailable when required
- B. Timely review of the data is potentially difficult
- C. Most systems and applications do not support logging
- D. Logs do not provide sufficient details of system and individual activities

**Answer: B**

**NEW QUESTION 561**

- (Exam Topic 11)

During the risk assessment phase of the project the CISO discovered that a college within the University is collecting Protected Health Information (PHI) data via an application that was developed in-house. The college collecting this data is fully aware of the regulations for Health Insurance Portability and Accountability Act (HIPAA) and is fully compliant.

What is the best approach for the CISO?

During the risk assessment phase of the project the CISO discovered that a college within the University is collecting Protected Health Information (PHI) data via

an application that was developed in-house. The college collecting this data is fully aware of the regulations for Health Insurance Portability and Accountability Act (HIPAA) and is fully compliant.  
 What is the best approach for the CISO?

- A. Document the system as high risk
- B. Perform a vulnerability assessment
- C. Perform a quantitative threat assessment
- D. Notate the information and move on

**Answer:** B

#### NEW QUESTION 565

- (Exam Topic 11)

In order for a security policy to be effective within an organization, it MUST include

- A. strong statements that clearly define the problem.
- B. a list of all standards that apply to the policy.
- C. owner information and date of last revision.
- D. disciplinary measures for non compliance.

**Answer:** D

#### NEW QUESTION 567

- (Exam Topic 11)

By carefully aligning the pins in the lock, which of the following defines the opening of a mechanical lock without the proper key?

- A. Lock pinging
- B. Lock picking
- C. Lock bumping
- D. Lock bricking

**Answer:** B

#### NEW QUESTION 568

- (Exam Topic 11)

Which of the following provides the minimum set of privileges required to perform a job function and restricts the user to a domain with the required privileges?

- A. Access based on rules
- B. Access based on user's role
- C. Access determined by the system
- D. Access based on data sensitivity

**Answer:** B

#### NEW QUESTION 573

- (Exam Topic 12)

Which of the following is a remote access protocol that uses a static authentication?

- A. Point-to-Point Tunneling Protocol (PPTP)
- B. Routing Information Protocol (RIP)
- C. Password Authentication Protocol (PAP)
- D. Challenge Handshake Authentication Protocol (CHAP)

**Answer:** C

#### NEW QUESTION 577

- (Exam Topic 12)

Match the name of access control model with its associated restriction.

Drag each access control model to its appropriate restriction access on the right.

<u>Access Control Model</u>	<u>Restrictions</u>
Mandatory Access Control	End user cannot set controls
Discretionary Access Control (DAC)	Subject has total control over objects
Role Based Access Control (RBAC)	Dynamically assigns permissions to particular duties based on job function
Rule based access control	Dynamically assigns roles to subjects based on criteria assigned by a custodian

- A. Mastered
- B. Not Mastered

**Answer:** A

**Explanation:**

Mandatory Access Control – End user cannot set controls

Discretionary Access Control (DAC) – Subject has total control over objects

Role Based Access Control (RBAC) – Dynamically assigns roles permissions to particular duties based on job function

Rule Based access control – Dynamically assigns roles to subjects based on criteria assigned by a custodian.

**NEW QUESTION 580**

- (Exam Topic 12)

Which of the following information MUST be provided for user account provisioning?

- A. Full name
- B. Unique identifier
- C. Security question
- D. Date of birth

**Answer:** B

**NEW QUESTION 585**

- (Exam Topic 12)

Which of the following is the BEST method to reduce the effectiveness of phishing attacks?

- A. User awareness
- B. Two-factor authentication
- C. Anti-phishing software
- D. Periodic vulnerability scan

**Answer:** A

**NEW QUESTION 587**

- (Exam Topic 12)

An Intrusion Detection System (IDS) has recently been deployed in a Demilitarized Zone (DMZ). The IDS detects a flood of malformed packets. Which of the following BEST describes what has occurred?

- A. Denial of Service (DoS) attack
- B. Address Resolution Protocol (ARP) spoof
- C. Buffer overflow
- D. Ping flood attack

**Answer:** A

**NEW QUESTION 592**

- (Exam Topic 12)

Network-based logging has which advantage over host-based logging when reviewing malicious activity about a victim machine?

- A. Addresses and protocols of network-based logs are analyzed.
- B. Host-based system logging has files stored in multiple locations.
- C. Properly handled network-based logs may be more reliable and valid.
- D. Network-based systems cannot capture users logging into the console.

**Answer:** A

**NEW QUESTION 593**

- (Exam Topic 12)

A company has decided that they need to begin maintaining assets deployed in the enterprise. What approach should be followed to determine and maintain ownership information to bring the company into compliance?

- A. Enterprise asset management framework
- B. Asset baseline using commercial off the shelf software
- C. Asset ownership database using domain login records
- D. A script to report active user logins on assets

**Answer:** A

**NEW QUESTION 597**

- (Exam Topic 12)

Which Radio Frequency Interference (RFI) phenomenon associated with bundled cable runs can create information leakage?

- A. Transference
- B. Covert channel
- C. Bleeding
- D. Cross-talk



**Answer:** D

**NEW QUESTION 598**

- (Exam Topic 12)

Which of the following is a strategy of grouping requirements in developing a Security Test and Evaluation (ST&E)?

- A. Tactical, strategic, and financial
- B. Management, operational, and technical
- C. Documentation, observation, and manual
- D. Standards, policies, and procedures

**Answer:** B

**NEW QUESTION 601**

- (Exam Topic 12)

The PRIMARY outcome of a certification process is that it provides documented

- A. interconnected systems and their implemented security controls.
- B. standards for security assessment, testing, and process evaluation.
- C. system weakness for remediation.
- D. security analyses needed to make a risk-based decision.

**Answer:** D

**NEW QUESTION 602**

- (Exam Topic 12)

Which of the following is a document that identifies each item seized in an investigation, including date and time seized, full name and signature or initials of the person who seized the item, and a detailed description of the item?

- A. Property book
- B. Chain of custody form
- C. Search warrant return
- D. Evidence tag

**Answer:** D

**NEW QUESTION 604**

- (Exam Topic 12)

Which type of security testing is being performed when an ethical hacker has no knowledge about the target system but the testing target is notified before the test?

- A. Reversal
- B. Gray box
- C. Blind
- D. White box

**Answer:** B

**NEW QUESTION 609**

- (Exam Topic 12)

Which of the following is an advantage of on-premise Credential Management Systems?

- A. Lower infrastructure capital costs
- B. Control over system configuration
- C. Reduced administrative overhead
- D. Improved credential interoperability

**Answer:** B

**NEW QUESTION 613**

- (Exam Topic 12)

Which of the following media sanitization techniques is MOST likely to be effective for an organization using public cloud services?

- A. Low-level formatting
- B. Secure-grade overwrite erasure
- C. Cryptographic erasure
- D. Drive degaussing

**Answer:** B

**NEW QUESTION 618**

- (Exam Topic 12)

Which of the following BEST describes a chosen plaintext attack?

- A. The cryptanalyst can generate ciphertext from arbitrary text.

- B. The cryptanalyst examines the communication being sent back and forth.
- C. The cryptanalyst can choose the key and algorithm to mount the attack.
- D. The cryptanalyst is presented with the ciphertext from which the original message is determined.

**Answer:** A

#### NEW QUESTION 619

- (Exam Topic 12)

What operations role is responsible for protecting the enterprise from corrupt or contaminated media?

- A. Information security practitioner
- B. Information librarian
- C. Computer operator
- D. Network administrator

**Answer:** B

#### NEW QUESTION 620

- (Exam Topic 12)

Which of the following BEST describes Recovery Time Objective (RTO)?

- A. Time of application resumption after disaster
- B. Time of application verification after disaster.
- C. Time of data validation after disaster.
- D. Time of data restoration from backup after disaster.

**Answer:** A

#### NEW QUESTION 625

- (Exam Topic 12)

Which of the following command line tools can be used in the reconnaissance phase of a network vulnerability assessment?

- A. dig
- B. ipconfig
- C. ifconfig
- D. nbstat

**Answer:** A

#### NEW QUESTION 629

- (Exam Topic 12)

A database administrator is asked by a high-ranking member of management to perform specific changes to the accounting system database. The administrator is specifically instructed to not track or evidence the change in a ticket. Which of the following is the BEST course of action?

- A. Ignore the request and do not perform the change.
- B. Perform the change as requested, and rely on the next audit to detect and report the situation.
- C. Perform the change, but create a change ticket regardless to ensure there is complete traceability.
- D. Inform the audit committee or internal audit directly using the corporate whistleblower process.

**Answer:** D

#### NEW QUESTION 634

- (Exam Topic 12)

In general, servers that are facing the Internet should be placed in a demilitarized zone (DMZ). What is MAIN purpose of the DMZ?

- A. Reduced risk to internal systems.
- B. Prepare the server for potential attacks.
- C. Mitigate the risk associated with the exposed server.
- D. Bypass the need for a firewall.

**Answer:** A

#### NEW QUESTION 635

- (Exam Topic 12)

Which of the following would BEST describe the role directly responsible for data within an organization?

- A. Data custodian
- B. Information owner
- C. Database administrator
- D. Quality control

**Answer:** A

#### NEW QUESTION 640

- (Exam Topic 12)

At which layer of the Open Systems Interconnect (OSI) model are the source and destination address for a datagram handled?

- A. Transport Layer
- B. Data-Link Layer
- C. Network Layer
- D. Application Layer

**Answer:** C

#### NEW QUESTION 642

- (Exam Topic 12)

How does a Host Based Intrusion Detection System (HIDS) identify a potential attack?

- A. Examines log messages or other indications on the system.
- B. Monitors alarms sent to the system administrator
- C. Matches traffic patterns to virus signature files
- D. Examines the Access Control List (ACL)

**Answer:** C

#### NEW QUESTION 645

- (Exam Topic 12)

Which of the following is the PRIMARY benefit of a formalized information classification program?

- A. It minimized system logging requirements.
- B. It supports risk assessment.
- C. It reduces asset vulnerabilities.
- D. It drives audit processes.

**Answer:** B

#### NEW QUESTION 647

- (Exam Topic 12)

Which of the following is BEST suited for exchanging authentication and authorization messages in a multi-party decentralized environment?

- A. Lightweight Directory Access Protocol (LDAP)
- B. Security Assertion Markup Language (SAML)
- C. Internet Mail Access Protocol
- D. Transport Layer Security (TLS)

**Answer:** B

#### NEW QUESTION 650

- (Exam Topic 12)

Which of the following is the MOST important consideration when developing a Disaster Recovery Plan (DRP)?

- A. The dynamic reconfiguration of systems
- B. The cost of downtime
- C. A recovery strategy for all business processes
- D. A containment strategy

**Answer:** C

#### NEW QUESTION 654

- (Exam Topic 12)

A security architect plans to reference a Mandatory Access Control (MAC) model for implementation. This indicates that which of the following properties are being prioritized?

- A. Confidentiality
- B. Integrity
- C. Availability
- D. Accessibility

**Answer:** C

#### NEW QUESTION 657

- (Exam Topic 12)

In order to assure authenticity, which of the following are required?

- A. Confidentiality and authentication
- B. Confidentiality and integrity
- C. Authentication and non-repudiation
- D. Integrity and non-repudiation

**Answer:** D

#### NEW QUESTION 659

- (Exam Topic 12)

The goal of a Business Impact Analysis (BIA) is to determine which of the following?

- A. Cost effectiveness of business recovery
- B. Cost effectiveness of installing software security patches
- C. Resource priorities for recovery and Maximum Tolerable Downtime (MTD)
- D. Which security measures should be implemented

**Answer:** C

#### NEW QUESTION 660

- (Exam Topic 12)

An organization publishes and periodically updates its employee policies in a file on their intranet. Which of the following is a PRIMARY security concern?

- A. Ownership
- B. Confidentiality
- C. Availability
- D. Integrity

**Answer:** C

#### NEW QUESTION 665

- (Exam Topic 12)

In configuration management, what baseline configuration information MUST be maintained for each computer system?

- A. Operating system and version, patch level, applications running, and versions.
- B. List of system changes, test reports, and change approvals
- C. Last vulnerability assessment report and initial risk assessment report
- D. Date of last update, test report, and accreditation certificate

**Answer:** A

#### NEW QUESTION 670

- (Exam Topic 12)

The application of a security patch to a product previously validate at Common Criteria (CC) Evaluation Assurance Level (EAL) 4 would

- A. require an update of the Protection Profile (PP).
- B. require recertification.
- C. retain its current EAL rating.
- D. reduce the product to EAL 3.

**Answer:** B

#### NEW QUESTION 674

- (Exam Topic 12)

When evaluating third-party applications, which of the following is the GREATEST responsibility of Information Security?

- A. Accept the risk on behalf of the organization.
- B. Report findings to the business to determine security gaps.
- C. Quantify the risk to the business for product selection.
- D. Approve the application that best meets security requirements.

**Answer:** C

#### NEW QUESTION 677

- (Exam Topic 12)

A user sends an e-mail request asking for read-only access to files that are not considered sensitive. A Discretionary Access Control (DAC) methodology is in place. Which is the MOST suitable approach that the administrator should take?

- A. Administrator should request data owner approval to the user access
- B. Administrator should request manager approval for the user access
- C. Administrator should directly grant the access to the non-sensitive files
- D. Administrator should assess the user access need and either grant or deny the access

**Answer:** A

#### NEW QUESTION 678

- (Exam Topic 12)

For network based evidence, which of the following contains traffic details of all network sessions in order to detect anomalies?

- A. Alert data
- B. User data
- C. Content data
- D. Statistical data

**Answer:**

D

**NEW QUESTION 683**

- (Exam Topic 12)

When designing a vulnerability test, which one of the following is likely to give the BEST indication of what components currently operate on the network?

- A. Topology diagrams
- B. Mapping tools
- C. Asset register
- D. Ping testing

**Answer: D**

**NEW QUESTION 686**

- (Exam Topic 12)

Reciprocal backup site agreements are considered to be

- A. a better alternative than the use of warm sites.
- B. difficult to test for complex systems.
- C. easy to implement for similar types of organizations.
- D. easy to test and implement for complex systems.

**Answer: B**

**NEW QUESTION 691**

- (Exam Topic 12)

Backup information that is critical to the organization is identified through a

- A. Vulnerability Assessment (VA).
- B. Business Continuity Plan (BCP).
- C. Business Impact Analysis (BIA).
- D. data recovery analysis.

**Answer: D**

**NEW QUESTION 695**

- (Exam Topic 12)

What is the MOST important element when considering the effectiveness of a training program for Business Continuity (BC) and Disaster Recovery (DR)?

- A. Management support
- B. Consideration of organizational need
- C. Technology used for delivery
- D. Target audience

**Answer: B**

**NEW QUESTION 697**

- (Exam Topic 12)

Which technology is a prerequisite for populating the cloud-based directory in a federated identity solution?

- A. Notification tool
- B. Message queuing tool
- C. Security token tool
- D. Synchronization tool

**Answer: C**

**NEW QUESTION 700**

- (Exam Topic 12)

What balance MUST be considered when web application developers determine how informative application error messages should be constructed?

- A. Risk versus benefit
- B. Availability versus auditability
- C. Confidentiality versus integrity
- D. Performance versus user satisfaction

**Answer: A**

**NEW QUESTION 704**

- (Exam Topic 13)

A security compliance manager of a large enterprise wants to reduce the time it takes to perform network, system, and application security compliance audits while increasing quality and effectiveness of the results. What should be implemented to BEST achieve the desired results?

- A. Configuration Management Database (CMDB)
- B. Source code repository
- C. Configuration Management Plan (CMP)

D. System performance monitoring application

**Answer:** C

**NEW QUESTION 706**

- (Exam Topic 13)

Which of the following is the MOST effective method to mitigate Cross-Site Scripting (XSS) attacks?

- A. Use Software as a Service (SaaS)
- B. Whitelist input validation
- C. Require client certificates
- D. Validate data output

**Answer:** B

**NEW QUESTION 709**

- (Exam Topic 13)

Which of the following is the MOST effective practice in managing user accounts when an employee is terminated?

- A. Implement processes for automated removal of access for terminated employees.
- B. Delete employee network and system IDs upon termination.
- C. Manually remove terminated employee user-access to all systems and applications.
- D. Disable terminated employee network ID to remove all access.

**Answer:** B

**NEW QUESTION 711**

- (Exam Topic 13)

Which of the following steps should be performed FIRST when purchasing Commercial Off-The-Shelf (COTS) software?

- A. undergo a security assessment as part of authorization process
- B. establish a risk management strategy
- C. harden the hosting server, and perform hosting and application vulnerability scans
- D. establish policies and procedures on system and services acquisition

**Answer:** D

**NEW QUESTION 714**

- (Exam Topic 13)

A control to protect from a Denial-of-Service (DoS) attack has been determined to stop 50% of attacks, and additionally reduces the impact of an attack by 50%. What is the residual risk?

- A. 25%
- B. 50%
- C. 75%
- D. 100%

**Answer:** A

**NEW QUESTION 719**

- (Exam Topic 13)

Which of the following is the MOST important security goal when performing application interface testing?

- A. Confirm that all platforms are supported and function properly
- B. Evaluate whether systems or components pass data and control correctly to one another
- C. Verify compatibility of software, hardware, and network connections
- D. Examine error conditions related to external interfaces to prevent application details leakage

**Answer:** B

**NEW QUESTION 723**

- (Exam Topic 13)

Due to system constraints, a group of system administrators must share a high-level access set of credentials. Which of the following would be MOST appropriate to implement?

- A. Increased console lockout times for failed logon attempts
- B. Reduce the group in size
- C. A credential check-out process for a per-use basis
- D. Full logging on affected systems

**Answer:** C

**Explanation:**

Section: Security Operations



#### NEW QUESTION 726

- (Exam Topic 13)

What protocol is often used between gateway hosts on the Internet?

- A. Exterior Gateway Protocol (EGP)
- B. Border Gateway Protocol (BGP)
- C. Open Shortest Path First (OSPF)
- D. Internet Control Message Protocol (ICMP)

**Answer:** B

#### NEW QUESTION 730

- (Exam Topic 13)

From a security perspective, which of the following assumptions MUST be made about input to an application?

- A. It is tested
- B. It is logged
- C. It is verified
- D. It is untrusted

**Answer:** D

#### NEW QUESTION 734

- (Exam Topic 13)

An organization plan on purchasing a custom software product developed by a small vendor to support its business model. Which unique consideration should be made part of the contractual agreement potential long-term risks associated with creating this dependency?

- A. A source code escrow clause
- B. Right to request an independent review of the software source code
- C. Due diligence form requesting statements of compliance with security requirements
- D. Access to the technical documentation

**Answer:** B

#### NEW QUESTION 736

- (Exam Topic 13)

Which of the following is a direct monetary cost of a security incident?

- A. Morale
- B. Reputation
- C. Equipment
- D. Information

**Answer:** C

#### NEW QUESTION 739

- (Exam Topic 13)

An international medical organization with headquarters in the United States (US) and branches in France wants to test a drug in both countries. What is the organization allowed to do with the test subject's data?

- A. Aggregate it into one database in the US
- B. Process it in the US, but store the information in France
- C. Share it with a third party
- D. Anonymize it and process it in the US

**Answer:** C

#### Explanation:

Section: Security Assessment and Testing

#### NEW QUESTION 740

- (Exam Topic 13)

Which of the following are important criteria when designing procedures and acceptance criteria for acquired software?

- A. Code quality, security, and origin
- B. Architecture, hardware, and firmware
- C. Data quality, provenance, and scaling
- D. Distributed, agile, and bench testing

**Answer:** A

#### NEW QUESTION 744

- (Exam Topic 13)

Drag the following Security Engineering terms on the left to the BEST definition on the right.

### Security Engineering Term

### Definition

Risk

A measure of the extent to which an entity is threatened by a potential circumstance or event, the adverse impacts that would arise if the circumstance or event occurs, and the likelihood of

Security Risk Treatment

The method used to identify the confidentiality, integrity, and availability requirements for organizational and system assets and to characterize the adverse impact or consequences should the asset be lost, modified, degraded, disrupted, compromised, or become unavailable.

Protection Needs Assessment

The method used to identify and characterize the dangers anticipated throughout the life cycle of the system.

Threat Assessment

The method used to identify feasible security risk mitigation options and plans.

- A. Mastered
- B. Not Mastered

**Answer:** A

#### **Explanation:**

Risk - A measure of the extent to which an entity is threatened by a potential circumstance of event, the adverse impacts that would arise if the circumstance or event occurs, and the likelihood of occurrence.

Protection Needs Assessment - The method used to identify the confidentiality, integrity, and availability requirements for organizational and system assets and to characterize the adverse impact or consequences should be asset be lost, modified, degraded, disrupted, compromised, or become unavailable.

Threat assessment - The method used to identify and characterize the dangers anticipated throughout the life cycle of the system.

Security Risk Treatment - The method used to identify feasible security risk mitigation options and plans.

#### **NEW QUESTION 747**

- (Exam Topic 13)

Unused space in a disk cluster is important in media analysis because it may contain which of the following?

- A. Residual data that has not been overwritten
- B. Hidden viruses and Trojan horses
- C. Information about the File Allocation table (FAT)
- D. Information about patches and upgrades to the system

**Answer:** A

#### **NEW QUESTION 750**

- (Exam Topic 13)

When determining who can accept the risk associated with a vulnerability, which of the following is MOST important?

- A. Countermeasure effectiveness
- B. Type of potential loss
- C. Incident likelihood
- D. Information ownership

**Answer:** C

#### **NEW QUESTION 754**

- (Exam Topic 13)

An organization has outsourced its financial transaction processing to a Cloud Service Provider (CSP) who will provide them with Software as a Service (SaaS). If there was a data breach who is responsible for monetary losses?

- A. The Data Protection Authority (DPA)
- B. The Cloud Service Provider (CSP)
- C. The application developers
- D. The data owner

**Answer:** B

#### NEW QUESTION 759

- (Exam Topic 13)

A security practitioner is tasked with securing the organization's Wireless Access Points (WAP). Which of these is the MOST effective way of restricting this environment to authorized users?

- A. Enable Wi-Fi Protected Access 2 (WPA2) encryption on the wireless access point
- B. Disable the broadcast of the Service Set Identifier (SSID) name
- C. Change the name of the Service Set Identifier (SSID) to a random value not associated with the organization
- D. Create Access Control Lists (ACL) based on Media Access Control (MAC) addresses

**Answer:** D

#### NEW QUESTION 762

- (Exam Topic 13)

Mandatory Access Controls (MAC) are based on:

- A. security classification and security clearance
- B. data segmentation and data classification
- C. data labels and user access permissions
- D. user roles and data encryption

**Answer:** A

#### NEW QUESTION 765

- (Exam Topic 13)

Which of the following is considered a secure coding practice?

- A. Use concurrent access for shared variables and resources
- B. Use checksums to verify the integrity of libraries
- C. Use new code for common tasks
- D. Use dynamic execution functions to pass user supplied data

**Answer:** B

#### NEW QUESTION 767

- (Exam Topic 13)

Which type of test would an organization perform in order to locate and target exploitable defects?

- A. Penetration
- B. System
- C. Performance
- D. Vulnerability

**Answer:** A

#### NEW QUESTION 772

- (Exam Topic 13)

Which of the following would an attacker BEST be able to accomplish through the use of Remote Access Tools (RAT)?

- A. Reduce the probability of identification
- B. Detect further compromise of the target
- C. Destabilize the operation of the host
- D. Maintain and expand control

**Answer:** D

#### NEW QUESTION 774

- (Exam Topic 13)

What is the PRIMARY goal of fault tolerance?

- A. Elimination of single point of failure
- B. Isolation using a sandbox
- C. Single point of repair
- D. Containment to prevent propagation

**Answer:** A

#### NEW QUESTION 777

- (Exam Topic 13)

In a change-controlled environment, which of the following is MOST likely to lead to unauthorized changes to production programs?

- A. Modifying source code without approval
- B. Promoting programs to production without approval
- C. Developers checking out source code without approval
- D. Developers using Rapid Application Development (RAD) methodologies without approval

**Answer:** B

**NEW QUESTION 778**

- (Exam Topic 13)

Within the company, desktop clients receive Internet Protocol (IP) address over Dynamic Host Configuration Protocol (DHCP). Which of the following represents a valid measure to help protect the network against unauthorized access?

- A. Implement path management
- B. Implement port based security through 802.1x
- C. Implement DHCP to assign IP address to server systems
- D. Implement change management

**Answer:** B

**NEW QUESTION 781**

- (Exam Topic 13)

Which of the following is the MOST challenging issue in apprehending cyber criminals?

- A. They often use sophisticated method to commit a crime.
- B. It is often hard to collect and maintain integrity of digital evidence.
- C. The crime is often committed from a different jurisdiction.
- D. There is often no physical evidence involved.

**Answer:** C

**NEW QUESTION 786**

- (Exam Topic 13)

Transport Layer Security (TLS) provides which of the following capabilities for a remote access server?

- A. Transport layer handshake compression
- B. Application layer negotiation
- C. Peer identity authentication
- D. Digital certificate revocation

**Answer:** C

**NEW QUESTION 791**

- (Exam Topic 13)

Which of the following MUST be scalable to address security concerns raised by the integration of third-party identity services?

- A. Mandatory Access Controls (MAC)
- B. Enterprise security architecture
- C. Enterprise security procedures
- D. Role Based Access Controls (RBAC)

**Answer:** D

**NEW QUESTION 795**

- (Exam Topic 13)

Which of the following entails identification of data and links to business processes, applications, and data stores as well as assignment of ownership responsibilities?

- A. Security governance
- B. Risk management
- C. Security portfolio management
- D. Risk assessment

**Answer:** B

**NEW QUESTION 798**

- (Exam Topic 13)

What MUST each information owner do when a system contains data from multiple information owners?

- A. Provide input to the Information System (IS) owner regarding the security requirements of the data
- B. Review the Security Assessment report (SAR) for the Information System (IS) and authorize the IS to operate.
- C. Develop and maintain the System Security Plan (SSP) for the Information System (IS) containing the data
- D. Move the data to an Information System (IS) that does not contain data owned by other information owners

**Answer:** C

**Explanation:**

Section: Security Assessment and Testing

**NEW QUESTION 803**

- (Exam Topic 13)

Which of the following would MINIMIZE the ability of an attacker to exploit a buffer overflow?

- A. Memory review
- B. Code review
- C. Message division
- D. Buffer division

**Answer:** B

#### NEW QUESTION 806

- (Exam Topic 13)

What is the foundation of cryptographic functions?

- A. Encryption
- B. Cipher
- C. Hash
- D. Entropy

**Answer:** A

#### NEW QUESTION 811

- (Exam Topic 13)

When network management is outsourced to third parties, which of the following is the MOST effective method of protecting critical data assets?

- A. Log all activities associated with sensitive systems
- B. Provide links to security policies
- C. Confirm that confidentially agreements are signed
- D. Employ strong access controls

**Answer:** D

#### NEW QUESTION 815

- (Exam Topic 13)

Which Identity and Access Management (IAM) process can be used to maintain the principle of least privilege?

- A. identity provisioning
- B. access recovery
- C. multi-factor authentication (MFA)
- D. user access review

**Answer:** A

#### NEW QUESTION 819

- (Exam Topic 13)

Digital certificates used in Transport Layer Security (TLS) support which of the following?

- A. Information input validation
- B. Non-repudiation controls and data encryption
- C. Multi-Factor Authentication (MFA)
- D. Server identity and data confidentiality

**Answer:** D

#### NEW QUESTION 820

- (Exam Topic 13)

A chemical plant wants to upgrade the Industrial Control System (ICS) to transmit data using Ethernet instead of RS422. The project manager wants to simplify administration and maintenance by utilizing the office network infrastructure and staff to implement this upgrade.

Which of the following is the GREATEST impact on security for the network?

- A. The network administrators have no knowledge of ICS
- B. The ICS is now accessible from the office network
- C. The ICS does not support the office password policy
- D. RS422 is more reliable than Ethernet

**Answer:** B

#### NEW QUESTION 824

- (Exam Topic 13)

A security professional determines that a number of outsourcing contracts inherited from a previous merger do not adhere to the current security requirements. Which of the following BEST minimizes the risk of this happening again?

- A. Define additional security controls directly after the merger
- B. Include a procurement officer in the merger team
- C. Verify all contracts before a merger occurs
- D. Assign a compliancy officer to review the merger conditions



**Answer:** D

**NEW QUESTION 828**

- (Exam Topic 13)

Which of the following is a responsibility of a data steward?

- A. Ensure alignment of the data governance effort to the organization.
- B. Conduct data governance interviews with the organization.
- C. Document data governance requirements.
- D. Ensure that data decisions and impacts are communicated to the organization.

**Answer:** A

**NEW QUESTION 830**

- (Exam Topic 13)

Who has the PRIMARY responsibility to ensure that security objectives are aligned with organization goals?

- A. Senior management
- B. Information security department
- C. Audit committee
- D. All users

**Answer:** C

**NEW QUESTION 834**

- (Exam Topic 13)

An organization adopts a new firewall hardening standard. How can the security professional verify that the technical staff correct implemented the new standard?

- A. Perform a compliance review
- B. Perform a penetration test
- C. Train the technical staff
- D. Survey the technical staff

**Answer:** B

**Explanation:**

Section: Security Operations

**NEW QUESTION 836**

- (Exam Topic 13)

Which of the BEST internationally recognized standard for evaluating security products and systems?

- A. Payment Card Industry Data Security Standards (PCI-DSS)
- B. Common Criteria (CC)
- C. Health Insurance Portability and Accountability Act (HIPAA)
- D. Sarbanes-Oxley (SOX)

**Answer:** B

**NEW QUESTION 839**

- (Exam Topic 13)

Extensible Authentication Protocol-Message Digest 5 (EAP-MD5) only provides which of the following?

- A. Mutual authentication
- B. Server authentication
- C. User authentication
- D. Streaming ciphertext data

**Answer:** C

**NEW QUESTION 841**

- (Exam Topic 13)

Which of the following is the GREATEST benefit of implementing a Role Based Access Control (RBAC) system?

- A. Integration using Lightweight Directory Access Protocol (LDAP)
- B. Form-based user registration process
- C. Integration with the organizations Human Resources (HR) system
- D. A considerably simpler provisioning process

**Answer:** D

**NEW QUESTION 845**

- (Exam Topic 13)

Which of the following is the MOST important part of an awareness and training plan to prepare employees for emergency situations?



- A. Having emergency contacts established for the general employee population to get information
- B. Conducting business continuity and disaster recovery training for those who have a direct role in the recovery
- C. Designing business continuity and disaster recovery training programs for different audiences
- D. Publishing a corporate business continuity and disaster recovery plan on the corporate website

**Answer:** C

#### NEW QUESTION 850

- (Exam Topic 13)

In a High Availability (HA) environment, what is the PRIMARY goal of working with a virtual router address as the gateway to a network?

- A. The second of two routers can periodically check in to make sure that the first router is operational.
- B. The second of two routers can better absorb a Denial of Service (DoS) attack knowing the first router is present.
- C. The first of two routers fails and is reinstalled, while the second handles the traffic flawlessly.
- D. The first of two routers can better handle specific traffic, while the second handles the rest of the traffic seamlessly.

**Answer:** C

#### NEW QUESTION 854

- (Exam Topic 13)

Which of the following is the BEST metric to obtain when gaining support for an Identify and Access Management (IAM) solution?

- A. Application connection successes resulting in data leakage
- B. Administrative costs for restoring systems after connection failure
- C. Employee system timeouts from implementing wrong limits
- D. Help desk costs required to support password reset requests

**Answer:** D

#### NEW QUESTION 859

.....

## Thank You for Trying Our Product

### We offer two products:

1st - We have Practice Tests Software with Actual Exam Questions

2nd - Questons and Answers in PDF Format

### CISSP Practice Exam Features:

- \* CISSP Questions and Answers Updated Frequently
- \* CISSP Practice Questions Verified by Expert Senior Certified Staff
- \* CISSP Most Realistic Questions that Guarantee you a Pass on Your FirstTry
- \* CISSP Practice Test Questions in Multiple Choice Formats and Updatesfor 1 Year

**100% Actual & Verified — Instant Download, Please Click**  
**[Order The CISSP Practice Test Here](#)**