

Exam Questions 400-007

Cisco Certified Design Expert (CCDE v3.0) Written Exam

<https://www.2passeasy.com/dumps/400-007/>



NEW QUESTION 1

A network attacker exploits application flaws to compromise critical systems in the organization with these objectives:

- Obtain sensitive data and export the data out of the network.
- Compromise developer and administrator credentials to potentially

What is the next step after application discovery is completed in Zero Trust networkings

- A. Establish visibility and behavior modeling
- B. Enforce policies and microsegmentation.
- C. Assess real-time security health.
- D. Ensure trustworthiness of systems.

Answer: B

Explanation:

<https://www.cisco.com/c/en/us/solutions/collateral/enterprise/design-zone-security/zt-arch-guide.html>

NEW QUESTION 2

An enterprise has identified these causes for inefficient CAPEX spending:

- CAPEX planning is driven by technology and not by business objectives.
- The CAPEX planning team lacks the data it needs to perform due diligence tasks.
- The organizational structure lacks sufficient accountability and incentives.

Which corporate cultural change contributes to improving the effectiveness of CAPEX spending?

- A. Build a financial control function that delivers high-quality reports on operational expenses for business insight and financial reporting.
- B. CxO-level staff must have a full technical understanding but the should not trust their technical leaders fully.
- C. Adopt new organizational models that promote real accountability for RO
- D. not just revenu
- E. EBITDA, and cash.
- F. Marketing and product management divisions must reduce their CAPEX budgets significantly to drive the change.

Answer: C

NEW QUESTION 3

What are two top cloud-native security challenges faced by today's cloud-oriented organizations? (Choose two)

- A. establishing user roles
- B. polymorphism
- C. lack of visibility and tracking
- D. increased attack surface
- E. user credential validation

Answer: CD

NEW QUESTION 4

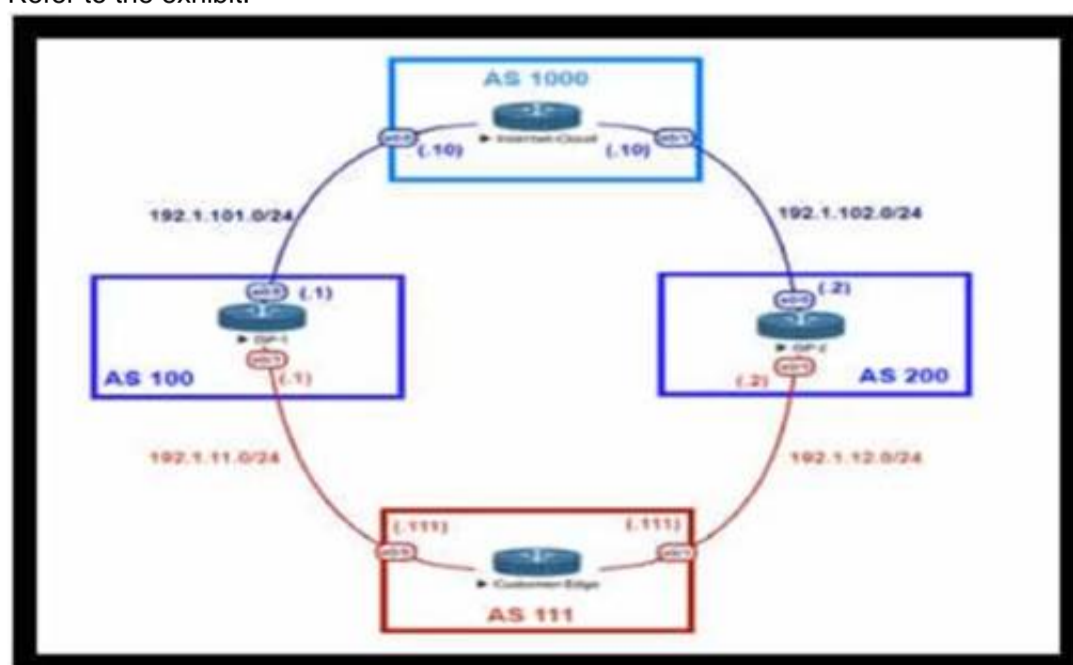
You are designing a network running both IPv4 and IPv6 to deploy QoS Which consideration is correct about the QoS for IPv4 and IPv6?

- A. IPv4 and IPv6 traffic types can use use queuing mechanisms such as LLQ, PQ and CQ.
- B. IPv6 packet classification is only available with process switching, whereas IPv4 packet classification is available with both process switching and CEF.
- C. IPv6 and IB/4 traffic types can use a single QoS policy to match both protocols
- D. Different congestion management mechanisms need to be used for IPv4 and IPv6 traffic types

Answer: C

NEW QUESTION 5

Refer to the exhibit.



An engineer is designing the traffic flow for AS 111. Traffic from AS 111 should be preferred via AS 100 for all external routes. A method must be used that only

affects AS 111. Which BGP attributes are best suited to control outbound traffic?

- A. community
- B. MED
- C. local preference
- D. As path

Answer: C

NEW QUESTION 6

Company XYZ wants to improve the security design of their network to include protection from reconnaissance and DoS attacks on their sub interfaces destined toward next hop routers. Which technology can be used to prevent these types of attacks?

- A. MPP
- B. CPPr
- C. CoPP
- D. DPP

Answer: B

Explanation:

<https://learningnetwork.cisco.com/s/question/0D53i00000KsuyvCAB/copp-vs-cppr>

NEW QUESTION 7

A Service Provider is designing a solution for a managed CE service to a number of local customers using a single CE platform and wants to have logical separation on the CE platform using Virtual Routing and Forwarding (VRF) based on IP address ranges or packet length. Which is the most scalable solution to provide this type of VRF Selection process on the CE edge device?

- A. Static Routes for Route Leaking
- B. Policy Based Routing
- C. OSPF per VRF Instance
- D. Multi-Protocol BGP

Answer: B

NEW QUESTION 8

You were tasked to enhance the security of a network with these characteristics:

- A pool of servers is accessed by numerous data centers and remote sites
- The servers are accessed via a cluster of firewalls
- The firewalls are configured properly and are not dropping traffic
- The firewalls occasionally cause asymmetric routing of traffic within the server data center.

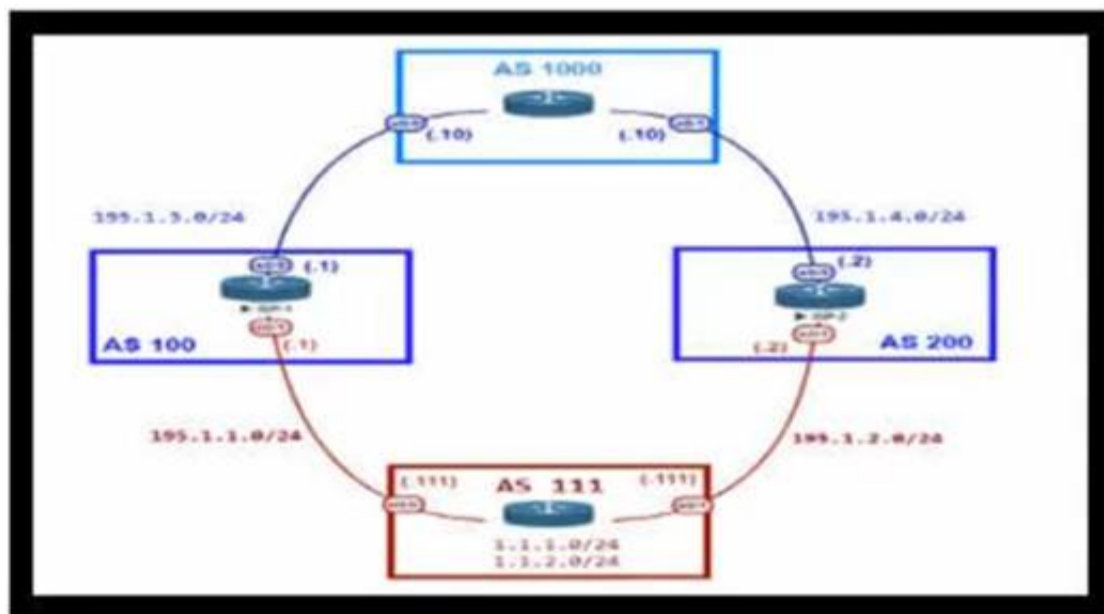
Which technology should you recommend to enhance security by limiting traffic that could originate from a hacker compromising a workstation and redirecting flows at the servers?

- A. Poison certain subnets by adding static routes to Null0 on the core switches connected to the pool of servers.
- B. Deploy uRPF strict mode.
- C. Limit sources of traffic that exit the server-facing interface of the firewall cluster with ACLs.
- D. Deploy uRPF loose mode

Answer: C

NEW QUESTION 9

Refer to the exhibit.



An engineer is designing the network for a multihomed customer running in AS 111 does not have any other Ass connected to it. Which technology is more comprehensive to use in the design to make sure that the AS is not being used as a transit AS?

- A. Configure the AS-set attribute to allow only routes from AS 111 to be propagated to the neighbor ASs.
- B. Use the local preference attribute to configure your AS as a non-transit" AS.
- C. include an AS path access list to send routes to the neighboring ASs that only have AS 111 in the AS path field.
- D. Include a prefix list to only receive routes from neighboring ASs.

Answer: C

NEW QUESTION 10

Company XYZ is in the process of identifying which transport mechanism(s) to use as their WAN technology. Their main two requirements are.

- a technology that could offer DPI, SLA, secure tunnels, privacy, QoS, scalability, reliability, and ease of management
- a technology that is cost-effective

Which WAN technology(ies) should be included in the design of company XYZ?

- A. Software-defined WAN should be the preferred choice because it complements both technologies, covers all the required features, and it is the most cost-effective solution.
- B. Internet should be the preferred option because it is cost effective and supports BFD, IP SL
- C. and IPsec for secure transport over the public Internet.
- D. Both technologies should be use
- E. Each should be used to back up the other one; where the primary links are MPLS, the internet should be used as a backup link with IPsec (and vice versa).
- F. MPLS meets all these requirements and it is more reliable than using the Internet
- G. It is widely used with defined best practices and an industry standard.

Answer: A

NEW QUESTION 10

Which relationship between IBGP and the underlying physical topology is true?

- A. iBGP full mesh requirement does not dictate any specific network topology.
- B. iBGP can work only on a ring network topology with a link-state protocol like OSPF or IS-IS
- C. iBGP full mesh requires an underlying fully meshed network topology.
- D. iBGP does not work on a ring network topology even with an underlying IGP.

Answer: A

Explanation:

iBGP peers can be multiple hops away. not like eBGP that needs direct connection (or ebgp-multihop defined). thus, only IP connectivity between two peers is required for an adjacency to form.

NEW QUESTION 11

A network design includes a long signaling delay in notifying the Layer 3 control plane that an interface has failed Which two of these actions would reduce that delay? (Choose two.)

- A. Increase network stability.
- B. Reduce the time for the network to reconverge.
- C. Increase the notification of interface flaps.
- D. Enable lower data link layer recovery systems to have an opportunity to restore the interface

Answer: BD

NEW QUESTION 14

You are tasked with the design of a high available network. Which two features provide fail closed environments? (Choose two.)

- A. EIGRP
- B. RPVST+
- C. MST
- D. L2MP

Answer: AB

NEW QUESTION 18

You are designing a network for a branch office. In order to improve convergence time, you are required to use the BFD feature Which four routing protocols can you use to facilitate this? (Choose four.)

- A. IS-IS
- B. static
- C. RIP
- D. EIGRP
- E. BGP

Answer: ABDE

NEW QUESTION 19

Drag and drop the multicast protocols from the left onto the current design situation on the right.

PIM-SM, SSM, BIDIR	IPv4 Group Management
PIM-DM, PIM-SM, SSM, BIDIR	IPv4 Forwarding
IGMP	IPv4 Interdomain Source Discovery
MSDP	IPv6 Group Management
MLD	IPv6 Forwarding

- A. Mastered
B. Not Mastered

Answer: A

Explanation:

A picture containing table Description automatically generated

IPv4:

Host Registration - IGMP

Router Registration - PIM-DM, PIM-SM, SSM, BIDIR Inter-Domain Source Discovery - MSDP

IPv6:

Host Registration - MLD

Router Registration - PIM-SM, SSM, BIDIR

NEW QUESTION 20

A company uses equipment from multiple vendors in a data center fabric to deliver SDN, enable maximum flexibility, and provide the best return on investment. Which YANG data model should be adopted for comprehensive features to simplify and streamline automation for the SDN fabric?

- A. proprietary
B. OpenConfig
C. native
D. IETF

Answer: B

NEW QUESTION 23

What best describes the difference between Automation and Orchestration?

- A. Automation refers to an automatic process for completing a single task and Orchestration refers to assembling and coordinating a set of tasks and conditions.
B. Automation describes a hands-off configuration process while Orchestration refers to sets of automation tasks that require the network administrator to coordinate
C. Automation refers to an automatic process for completing multiple tasks with conditions and Orchestration refers to executing tasks in parallel.
D. Automation refers to scripting languages (Pytho
E. Ansible etc.) and Orchestration refers to commercial products that control configuration deployment

Answer: A

NEW QUESTION 28

An engineer is designing the QoS strategy for Company XYZ. Based on initial analysis, a lot of scavenger type of traffic is traversing the network's 20Mb Internet link toward the service provider. The new design must use a QoS technique that limits scavenger traffic to 2 Mbps, which helps avoid oversubscription of the link during times of congestion. Which QoS technique can be used to facilitate this requirement?

- A. class-based traffic policing
B. LLQ
C. CBWFQ
D. class-based traffic shaping

Answer: C

NEW QUESTION 30

Which methodology is the leading lifecycle approach to network design and implementation?

- A. PPDIOO
B. Waterfall model
C. Spiral model
D. V model

Answer: A

NEW QUESTION 35

Sometimes SDN leverages various overlay networking technologies to create layer(s) of network abstraction. What describes an overlay network?

- A. It transmits packets that traverse over network devices like switches and routers
- B. It encapsulates packets at source and destination, which incurs additional overhead
- C. Packet delivery and reliability occurs at Layer 3 and Layer 4
- D. It is responsible for the delivery of packets; NAT- or VRF-based segregation is required

Answer: B

NEW QUESTION 40

Drag and drop the design characteristics from the left onto the correct network filter techniques on the right. Not all options are used.

It is used to prevent spoofing attacks when there are alternate routes to a given IP address

It is used to check the existence of a route without regard to the incoming interface

It is a dynamic filter

It requires manual configuration

It is used as a filtering technique for Martian IP addresses

Ingress Access Lists

target 1

Strict Reverse Path Forwarding

target 2

Feasible Path Reverse Path Forwarding

target 3

Loose Reverse Path Forwarding

target 4

- A. Mastered
- B. Not Mastered

Answer: A

Explanation:

It is used to prevent spoofing attacks when there are alternate routes to a given IP address

It is used to check the existence of a route without regard to the incoming interface

It is a dynamic filter

It requires manual configuration

It is used as a filtering technique for Martian IP addresses

Ingress Access Lists

It requires manual configuration

Strict Reverse Path Forwarding

It is a dynamic filter

Feasible Path Reverse Path Forwarding

It is used to prevent spoofing attacks when there are alternate routes to a given IP address

Loose Reverse Path Forwarding

It is used as a filtering technique for Martian IP addresses

NEW QUESTION 44

Which feature must be part of the network design to wait a predetermined amount of time before notifying the routing protocol of a change in the path in the network?

- A. Transmit delay
- B. Throttle timer
- C. SPF hold time
- D. Interface dampening

Answer: B

NEW QUESTION 47

Which three elements help network designers to construct secure systems that protect information and resources (such as devices, communication, and data) from unauthorized access, modification, inspection, or destruction? (Choose three.)

- A. confidential
- B. serviceability
- C. reliability
- D. availability
- E. integrity
- F. scalability

Answer: ADE

NEW QUESTION 49

Which two impacts of adding the IP event dampening feature to a network design are true? (Choose two.)

- A. It protects against routing loops.
- B. It switches traffic immediately after a link failure.
- C. It speeds up link failure detection.
- D. It reduces the utilization of system processing resources.
- E. It improves overall network stability.

Answer: DE

NEW QUESTION 51

An architect receives a business requirement from a CTO that states the RTO and RPO for a new system should be as close as possible to zero. Which replication method and data center technology should be used?

- A. asynchronous replication over dual data centers via DWDM
- B. synchronous replication over geographically dispersed dual data centers via MPLS
- C. synchronous replication over dual data centers via Metro Ethernet
- D. asynchronous replication over geographically dispersed dual data centers via CWDM

Answer: B

Explanation:

RTO and RPO are measures of how quickly and accurately a system can be recovered after a disaster or failure. RTO refers to the amount of time it takes to restore a system to its normal operation after a failure, while RPO refers to the amount of data that can be lost as a result of a failure. In synchronous replication, data is written to both the primary and secondary systems at the same time. This ensures that the data on the secondary system is always up-to-date and ready for use in the event of a disaster or failure. Geographically dispersed dual data centers refer to two data centers that are located in different geographical locations, which can help to reduce the risk of a disaster or failure impacting both data centers at the same time.

NEW QUESTION 53

Which design principal improves network resiliency?

- A. Added load-balancing
- B. Added redundancy
- C. Added confidentiality
- D. Added reliability

Answer: B

NEW QUESTION 56

Refer to the table.

CONNECTIVITY	CAPEX	OPEX ANNUAL	INSTALLATION FEE	TERM
DWDM over dark fiber	\$200,000	\$100,000	\$30,000	12 months
CWDM over dark fiber	\$150,000	\$100,000	\$25,000	18 months
MPLS wires only	\$50,000	\$180,000	\$5,000	12 months
Metro Ethernet	\$65,000	\$100,000	\$5,000	36 months

A customer investigates connectivity options for a DCI between two production data centers to aid a large-scale migration project. The migration is estimated to take 20 months to complete but might extend an additional 10 months if issues arise. All connectivity options meet the requirements to migrate workloads. Which transport technology provides the best ROI based on cost and flexibility?

- A. CWDM over dark fiber
- B. MPLS
- C. DWDM over dark fiber
- D. Metro Ethernet

Answer: D

NEW QUESTION 57

You have been asked to design a high-density wireless network for a university campus. Which two principles would you apply in order to maximize the wireless network capacity? (Choose two.)

- A. Implement a four-channel design on 2.4 GHz to increase the number of available channels

- B. Choose a high minimum data rate to reduce the duty cycle.
- C. increases the number of SSIDs to load-balance the client traffic.
- D. Make use of the 5-GHz band to reduce the spectrum utilization on 2.4 GHz when dual-band clients are used.
- E. Enable 802.11n channel bonding on both 2.4 GHz and 5 GHz to increase the maximum aggregated cell throughput.

Answer: BD

NEW QUESTION 60

A healthcare customer requested that SNMP traps must be sent over the MPLS Layer 3 VPN service. Which protocol must be enabled?

- A. SNMPv3
- B. Syslog
- C. Syslog TLS
- D. SNMPv2
- E. SSH

Answer: A

NEW QUESTION 63

Which Interconnectivity method offers the fastest convergence in the event of a unidirectional issue between three Layer 3 switches connected together with routed links in the same rack in a data center?

- A. Copper Ethernet connectivity with BFD enabled
- B. Copper Ethernet connectivity with UDLD enabled
- C. Fiber Ethernet connectivity with BFD enabled
- D. Fiber Ethernet connectivity with UDLD enabled

Answer: C

NEW QUESTION 67

Which tool automates network implementation activities and shortens the implementation lifecycle?

- A. LISP
- B. Java
- C. Conclusion
- D. Python

Answer: D

NEW QUESTION 71

You have been tasked with designing a data center interconnect to provide business continuity You want to encrypt the traffic over the DCI using IEEE 802.1AE MACsec to prevent the deployment of any firewall or IPS. Which two interconnect technologies support MACsec? (Choose two.)

- A. EoMPLS
- B. MPLS Layer 3 VPN
- C. DMVPN
- D. GET VPN
- E. KVPLS

Answer: AE

NEW QUESTION 76

An international media provider is an early adopter of Docker and micro services and is using an open-source homegrown container orchestration system. A few years ago, they migrated from on-premises data centers to the cloud Now they are faced with challenges related to management of the deployed services with their current homegrown orchestration system.

Which platform is well-suited as a state-aware orchestration system?

- A. Puppet
- B. Kubemetes
- C. Ansible
- D. Terraform

Answer: B

NEW QUESTION 80

Which two data plane hardening techniques are true? (Choose two)

- A. warning banners
- B. redundant AAA servers
- C. Control Plane Policing
- D. SNMPv3
- E. infrastructure ACLs
- F. disable unused services
- G. routing protocol authentication

Answer: EF

NEW QUESTION 83

A network security team uses a purpose-built tool to actively monitor the campus network, applications, and user activity. The team also analyzes enterprise telemetry data from IPFIX data records that are received from devices in the campus network. Which action can be taken based on the augmented data?

- A. reduction in time to detect and respond to threats
- B. integration with an incident response plan
- C. adoption and improvement of threat-detection response
- D. asset identification and grouping decisions

Answer: A

NEW QUESTION 86

A Tier-3 Service Provider is evolving into a Tier-2 Service Provider due to the amount of Enterprise business it is receiving. The network engineers are re-evaluating their IP/MPLS design considerations in order to support duplicate/overlapping IP addressing from their Enterprise customers within each Layer3 VPN. Which concept would need to be reviewed to ensure stability in their network?

- A. Assigning unique Route Distinguishers
- B. Assigning unique Route Target ID'S
- C. Assigning unique IP address space for the Enterprise NAT/Firewalls
- D. Assigning unique VRF ID's to each L3VPN

Answer: A

NEW QUESTION 91

Company XYZ wants to use the FCAPS ISO standard for network management design. The focus of the design should be to monitor and keep track of any performance issues by continuously collecting and analyzing statistical information to monitor, correct, and optimize any reduced responsiveness across the network. Which layer accomplishes this design requirement?

- A. fault management
- B. accounting management
- C. performance management
- D. security management

Answer: C

NEW QUESTION 96

A European national bank considers migrating its on-premises systems to a private cloud offering in a non-European location to significantly reduce IT costs. What is a primary factor prior to migration?

- A. data governance
- B. additional latency
- C. security
- D. cloud connectivity

Answer: A

NEW QUESTION 100

What is an architectural framework created by ETSI that defines standards to decouple network functions from proprietary hardware-based appliances and have them run in software on standard x86 servers?

- A. NFVIS
- B. NFV
- C. VNF

Answer: C

NEW QUESTION 102

Company XYZ is running a redundant private WAN network using OSPF as the underlay protocol. The current design accommodates for redundancy in the network, but it is taking over 30 seconds for the network to reconverge upon failure. Which technique can be implemented in the design to detect such a failure in a subsecond?

- A. STP
- B. fast hello
- C. OSPF LFA
- D. BFD
- E. flex links

Answer: D

NEW QUESTION 106

An external edge router provides connectivity from a service provider to an enterprise. Which two Internet edge best practices meet compliance regulations? (Choose two)

- A. Implement filtering to control traffic that is sourced from the infrastructure IP space.
- B. Enable and use only secure protocols.
- C. Send logs to a centralized logging collection server.
- D. Implement EBGP to advertise all owned IP blocks.

E. Use login banners and interface access lists to restrict administrative access to the system

Answer: BE

NEW QUESTION 109

An engineer is designing a DMVPN network where OSPF has been chosen as the routing protocol A spoke-to-spoke 'J<ita propagation model must be set up Which two design considerations must be taken into account? (Choose two)

- A. Configure all the sites as network type broadcast
- B. The network type on all sites should be point-to-multipoint
- C. The network type should be point-to-multipoint for the hub and point-to-point for the spokes.
- D. The hub should be set as the DR by specifying the priority to 255.
- E. The hub should be the DR by changing the priority of the spokes to 0.

Answer: AE

NEW QUESTION 113

Company XYZ uses an office model where the employees can use any open desk and plug their laptops in. They want to authenticate the end users using their domain username and password before allowing them access to the network. The design must also accommodate the ability of controlling traffic within the same group or subnet if a macro (or micro) segmentation-based model is adopted in the future. Which protocol can be recommended for this design to authenticate end users?

- A. LDAP
- B. EAP
- C. TACACS+
- D. RADIUS

Answer: D

Explanation:

<https://www.networkstraining.com/what-is-cisco-ise/>

NEW QUESTION 115

When an SDN-based model is used to transmit multimedia traffic, which aspect should an architect consider while designing the network?

- A. QoE estimation
- B. security
- C. traffic patterns
- D. flow forwarding

Answer: A

NEW QUESTION 119

Company XYZ is revisiting the security design for their data center because they now have a requirement to control traffic within a subnet and implement deep packet inspection Which technology meets the updated requirements and can be incorporated into the design?

- A. routed firewall
- B. VLAN ACLs on the switch
- C. transparent firewall
- D. zone-based firewall on the Layer 3 device

Answer: C

NEW QUESTION 123

A network architect must redesign a service provider edge, where multiservice and multitenant PEs are currently present. Which design feature should be minimized in the new design to achieve reliability?

- A. bridging
- B. fate sharing
- C. redundancy
- D. unicast overlay routing

Answer: B

NEW QUESTION 126

Company XYZ is running OSPF in their network. They have merged with another company that is running EIGRP as the routing protocol. Company XYZ now needs the two domains to talk to each other with redundancy, while maintaining a loop free environment. The solution must scale when new networks are added into the network in the near future. Which technology can be used to meet these requirements?

- A. multipoint route-redistribution with route filtering using ACLs
- B. DUMP multipoint route-redistribution with route filtering using route tags
- C. DUMPS single point route-redistribution with route filtering using route tags
- D. DUMPS single point route-redistribution with route filtering using ACLs

Answer: B

NEW QUESTION 129

Which two application requirements are mandatory for traffic to receive proper treatment when placed in the priority queue? (Choose two.)

- A. small transactions (HTTP-like behavior)
- B. WRED drop treatment
- C. tolerance to packet loss
- D. intolerance to jitter
- E. TCP-based application

Answer: AD

NEW QUESTION 131

Which design solution reduces the amount of IGMP state in the network?

- A. IGMP filtering
- B. IGMPv3 with PIM-SSM
- C. multiple multicast domains
- D. one multicast group address thorough network regardless of IGMP version

Answer: A

NEW QUESTION 135

Which effect of using ingress filtering to prevent spoofed addresses on a network design is true?

- A. It reduces the effectiveness of DDoS attacks when associated with DSCP remarking to Scavenger.
- B. It protects the network Infrastructure against spoofed DDoS attacks.
- C. It Classifies bogon traffic and remarks it with DSCP bulk.
- D. It filters RFC 1918 IP addresses.

Answer: B

NEW QUESTION 137

A senior network designer suggests that you should improve network convergence times by reducing BGP timers between your CE router and the PE router of the service provider. Which two factors should you consider to adjust the timer values? (Choose two.)

- A. service provider agreement to support tuned timers
- B. manual updates to the peer groups
- C. service provider scheduling of changes to the PE
- D. number of routes on the CE router
- E. number of VRFs on the PE router

Answer: AD

NEW QUESTION 142

Which function is performed at the access layer of the three-layer hierarchical network design model?

- A. fault isolation
- B. QoS classification and marking boundary
- C. reliability
- D. fast transport
- E. redundancy and load balancing

Answer: B

NEW QUESTION 143

What are two key design principles when using a hierarchical core-distribution-access network model? (Choose two)

- A. A hierarchical network design model aids fault isolation
- B. The core layer is designed first, followed by the distribution layer and then the access layer
- C. The core layer provides server access in a small campus.
- D. A hierarchical network design facilitates changes
- E. The core layer controls access to resources for security

Answer: AD

NEW QUESTION 147

Company XYZ branch offices connect to the headquarter sites using two links, MPLS and Internet. The company wants to design the traffic flow so that voice traffic goes through the MPLS link and all other traffic uses either the MPLS link or the Internet link. Which technique can the company use in their design to ensure that the traffic is not process switched?

- A. policy-based routing
- B. virtual links
- C. visualization
- D. floating static route

Answer: A

NEW QUESTION 148

Which two control plane policer designs must be considered to achieve high availability? (Choose two.)

- A. Control plane policers are enforced in hardware to protect the software path, but they are hardware platform dependent in terms of classification ability.
- B. Control plane policers are really needed only on externally facing devices.
- C. Control plane policers can cause the network management systems to create false alarms.
- D. Control plane policers must be processed before a forwarding decision is made.
- E. Control plane policers require that adequate protocols overhead are factored in to allow protocol convergence.

Answer: AD

NEW QUESTION 152

An existing wireless network was designed to support data traffic only. You must now install context Aware services for location tracking changes must be applied to the existing wireless network to increase the location accuracy? (Chose two)

- A. Add access points along the perimeter of the coverage area.
- B. Increase the access point density to create an average inter-access point distance of less than 40 feet or 12.2 meters
- C. Use directional antennas to provide more cell overlapping
- D. Install additional access points in monitor mode where the co-channel interference would otherwise be affected
- E. Fine tune the radio configuration of the access point to have a higher average transmission power to achieve better coverage

Answer: BE

NEW QUESTION 153

Which mechanism provides Layer 2 fault isolation between data centers?

- A. fabric path
- B. OTL
- C. advanced VPLS
- D. LISP
- E. TRILL

Answer: D

NEW QUESTION 158

A network architect in an enterprise is designing a network policy for certain database applications. The goal of the policy is to allow these applications to access the internet directly, whereas other user and network applications that communicate with systems or users outside their own network must be routed through the data center. The focus is on achieving higher availability and a better user experience for the database applications, but switching between different network paths based on performance characteristics must be supported.

Which solution meets these requirements?

- A. MPLS L3VPN with QoS
- B. Cloud onRamp for IaaS
- C. Cloud onRamp for SaaS
- D. MPLS direct connect

Answer: C

Explanation:

<https://www.cisco.com/c/en/us/solutions/collateral/enterprise-networks/sd-wan/nb-06-cloud-onramp-saas-faq-ct>

NEW QUESTION 161

Which parameter is the most important factor to consider when deciding service placement in a cloud solution?

- A. data replication cost
- B. application structure
- C. security framework Implementation time
- D. data confidentiality rules

Answer: D

NEW QUESTION 162

Company XYZ must design a strategy to protect their routers from DoS attacks, such as traffic destined to the router's own route processor, using separate control plane categories. Which two capabilities can be used to achieve this requirement? (Choose two.)

- A. Control Plane Protection using queue thresholding on the transit subinterface
- B. Control Plane Protection using port filtering on the transit subinterface
- C. Control Plane Protection using port filtering on the main interface
- D. Control Plane Protection using queue thresholding on the host subinterface
- E. Control Plane Protection using port filtering on the host subinterface

Answer: DE

NEW QUESTION 164

Which DCI technology utilizes a “flood and learn” technique to populate the Layer2 forwarding table?

- A. LISP
- B. OTV
- C. VPLS
- D. EVPN

Answer: C

NEW QUESTION 167

What are two primary design constraints when a robust infrastructure solution is created? (Choose two.)

- A. monitoring capabilities
- B. project time frame
- C. staff experience
- D. component availability
- E. total cost

Answer: BE

NEW QUESTION 172

Which two features describe controller-based networking solutions compared to traditional networking solutions? (Choose two.)

- A. inflate licensing costs
- B. reduce network configuration complexity
- C. provide centralization of primary IT functions
- D. allow for fewer network failures
- E. increase network bandwidth usage

Answer: BC

NEW QUESTION 177

Which mechanism enables small, unmanaged switches to plug into ports of access switches without risking switch loops?

- A. PortFast
- B. UDLD
- C. Root guard
- D. BPDU guard

Answer: D

NEW QUESTION 182

Which two types of planning approaches are used to develop business-driven network designs and to facilitate the design decisions? (Choose two)

- A. cost optimization approach
- B. strategic planning approach
- C. modular approach
- D. tactical planning approach
- E. business optimization approach

Answer: BD

NEW QUESTION 184

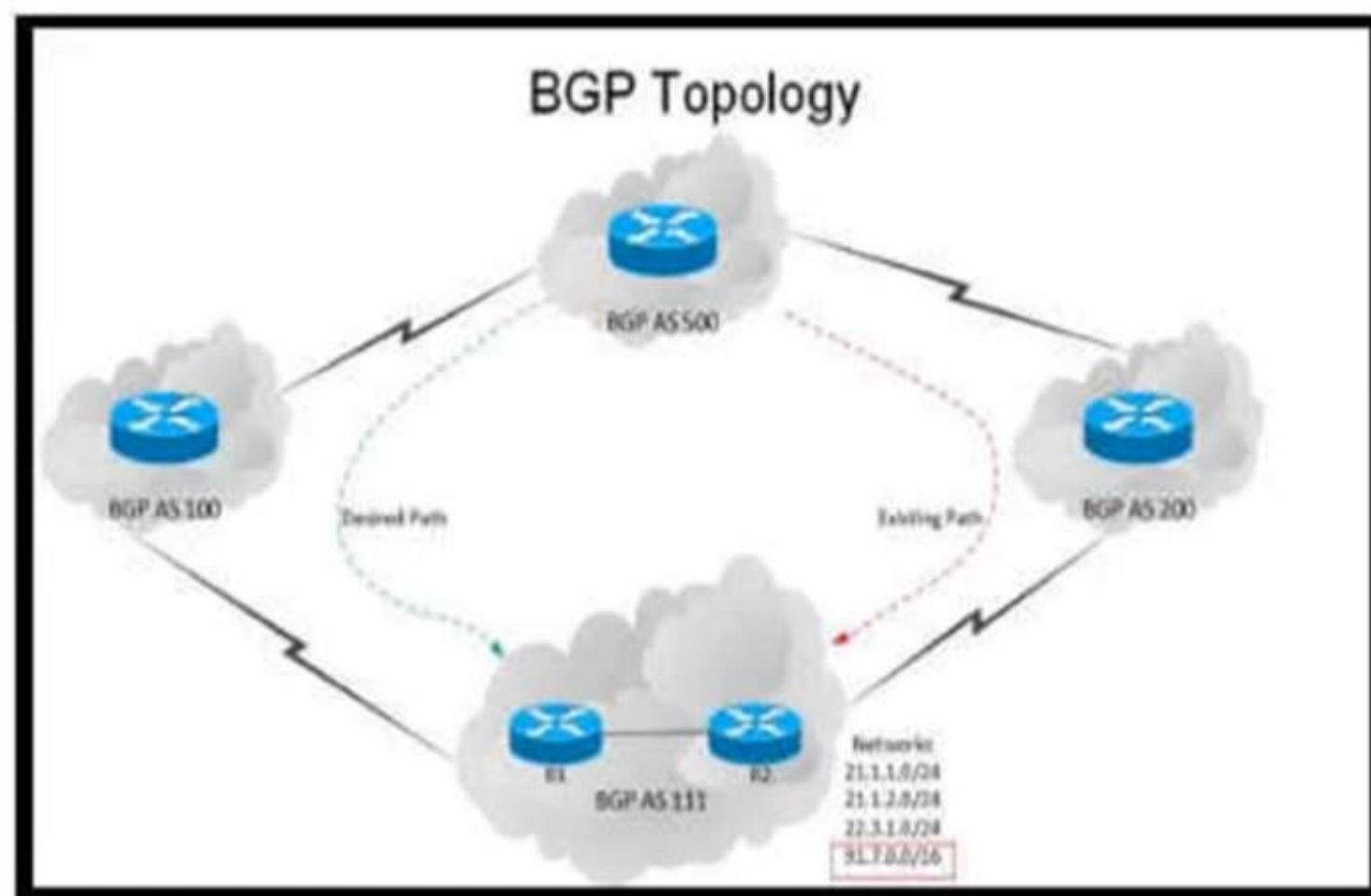
According to the CIA triad principles for network security design, which principle should be priority for a Zero Trust network?

- A. requirement for data-in-motion encryption and 2FA authentication
- B. requirement for data-at-rest encryption for user identification within the VPN termination hardware
- C. categorization of systems, data, and enterprise BYOD assets that are connected to network zones based on individual privacy needs
- D. ensuring that authorized users have high-availability system access from defined zones to defined systems or zones

Answer: A

NEW QUESTION 187

Refer to the exhibit.



An engineer has been asked to redesign the traffic flow toward AS 111 coming from AS 500. Traffic destined to AS 111 network 91.7.0.0/16 should come in via AS 100, while traffic destined to all other networks in AS 111 should continue to use the existing path. Which BGP attributes are best suited to control this inbound traffic coming from BGP AS 500 into the 91.7.0.0/16 network?

- A. Prepend AS path for the 91.7.0.0/16 network and set it for neighbor in AS 200.
- B. Use extended community for the 91.7.0.0/16 network, not advertising it to the bi-lateral peer.
- C. Use local preference on R1 for the networks that AS 500 advertises to AS 111.
- D. Set higher MED for neighbor in AS 100 to influence incoming traffic for the 91.7.0.0/16 network.

Answer: A

NEW QUESTION 189

Which optimal use of interface dampening on a fast convergence network design is true?

- A. When occasional flaps of long duration occur
- B. when numerous adjacent flaps of very short duration occur
- C. when the router hardware is slower than the carrier delay down detection
- D. when the switch hardware is faster than the debounce timer down detection

Answer: B

NEW QUESTION 194

Company XYZ wants to use the FCAPS ISO standard for network management design. The focus of the design should be to minimize network outages by employing a set of procedures and activities to detect and isolate network issues and the appropriate corrective actions to overcome current issues and prevent them from occurring again. Which layer accomplishes this design requirement?

- A. fault management
- B. performance management
- C. security management
- D. accounting management

Answer: A

NEW QUESTION 195

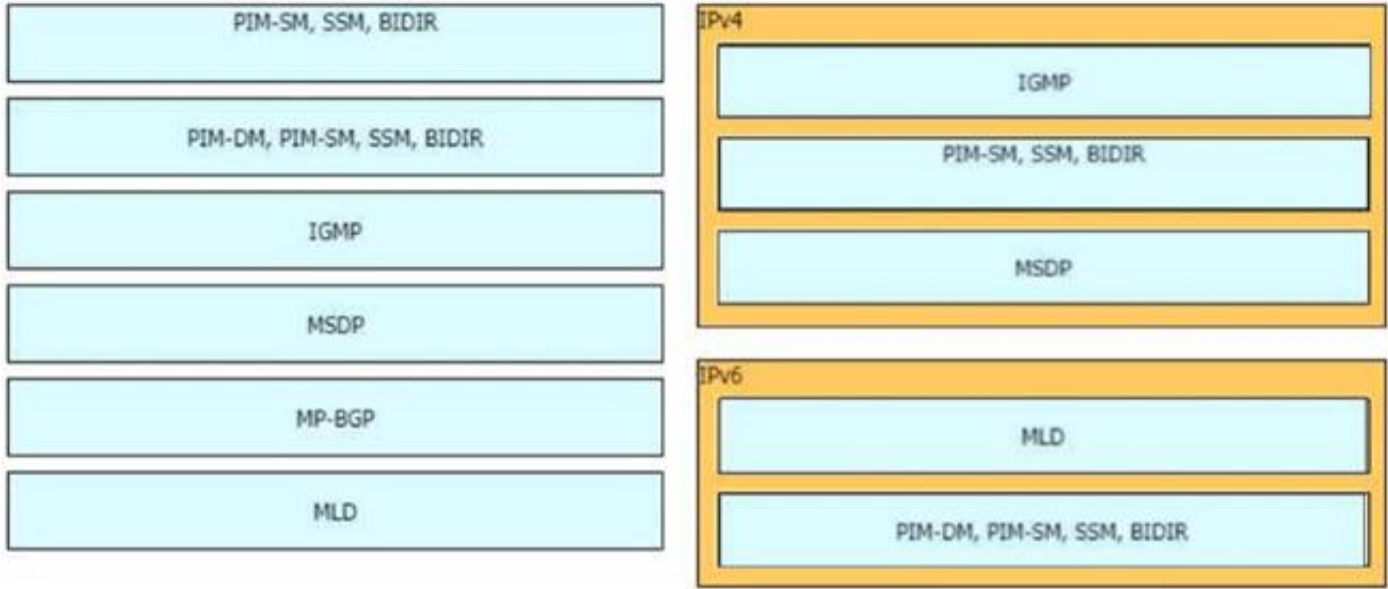
Drag and drop the multicast protocols from the left onto the current design situation on the right.

PIM-SM, SSM, BIDIR	IPv4	host registration
PIM-DM, PIM-SM, SSM, BIDIR		router registration
IGMP		intra-domain source discovery
MSDP	IPv6	host registration
MP-BGP		router registration
MLD		

- A. Mastered
- B. Not Mastered

Answer: A

Explanation:



NEW QUESTION 197

An enterprise wants to provide low-cost delivery of network systems that can be scaled on business demand, followed by an initiative to reduce capital expenses for new IT equipment. Which technology meets these goals'?

- A. IaaS within a private cloud
- B. IaaS within an on-premises location
- C. PaaS within a public cloud
- D. SaaS within an on-premises location

Answer: C

NEW QUESTION 198

An enterprise solution team is performing an analysis of multilayer architecture and multicontroller SDN solutions for multisite deployments. The analysis focuses on the ability to run tasks on any controller via a standardized interface. Which requirement addresses this ability on a multicontroller platform?

- A. Deploy a root controller to gather a complete network-level view.
- B. Use the East-West API to facilitate replication between controllers within a cluster.
- C. Build direct physical connectivity between different controllers.
- D. Use OpenFlow to implement and adapt new protocols.

Answer: D

NEW QUESTION 199

Which two features control multicast traffic in a VLAN environment? (Choose two)

- A. IGMP snooping
- B. MLD snooping
- C. RGMP
- D. PIM snooping
- E. pruning

Answer: AB

NEW QUESTION 200

Drag and drop the characteristics from the left onto the corresponding network management options on the right.

protocol based on HTTP for configuring data defined in YANG and supports operations such as GET, PUT, POST, PATCH, and DELETE	NETCONF
provides mechanisms to install, manipulate, and delete the configuration of network devices; uses XML for data encoding and the operation is realized as RPC	RESTCONF
application program interface that uses HTTP requests to GET, PUT, POST, and DELETE data	ANSIBLE
open-source software provisioning, configuration management, and application-deployment tool	YANG
data modeling language used to model configuration data, state data, remote procedure calls, and notifications for network management protocols	REST API

- A. Mastered
- B. Not Mastered

Answer: A

Explanation:

Text Description automatically generated

NEW QUESTION 204

Company XYZ has a hub-and-spoke topology over an SP-managed infrastructure. To measure traffic performance metrics, they implemented IP SLA senders on all spoke CE routers and an IP SLA responder on the hub CE router. What must they monitor to have visibility on the potential performance impact due to the constantly increasing number of spoke sites?

- A. CPU and memory usage on the spoke routers
- B. memory usage on the hub router
- C. CPU usage on the hub router
- D. interface buffers on the hub and spoke routers

Answer: C

NEW QUESTION 209

SD-WAN can be used to provide secure connectivity to remote offices, branch offices, campus networks, data centers, and the cloud over any type of IP-based underlay transport network. Which two statements describe SD WAN solutions? (Choose two.)

- A. SD-WAN networks are inherently protected against slow performance.
- B. Control and data forwarding planes are kept separate.
- C. Improved operational efficiencies result in cost savings.
- D. Solutions include centralized orchestration, control, and zero-touch provisioning.
- E. Solutions allow for variations of commodity and specialized switching hardware.

Answer: BD

NEW QUESTION 211

Agile and Waterfall are two popular methods for organizing projects. What describes any Agile network design development process?

- A. working design over comprehensive documentation
- B. contract negotiation over customer collaboration
- C. following a plan over responding to change
- D. processes and tools over individuals and interactions over time

Answer: A

NEW QUESTION 216

A business customer deploys workloads in the public cloud. Now the customer network faces governance issues with the flow of IT traffic and must ensure the security of data and intellectual property. Which action helps to identify the issue for further resolution?

- A. Set up a secure tunnel from customer routers to ensure that traffic is protected as it travels to the cloud service providers.
- B. Send IPFIX telemetry data from customer routers to a centralized collector to identify traffic to cloud service providers
- C. Build a zone-based firewall policy on Internet edge firewalls that collects statistics on traffic sent to cloud service providers
- D. Apply workload policies that dictate the security requirements to the workloads that are placed in the cloud.

Answer: B

NEW QUESTION 221

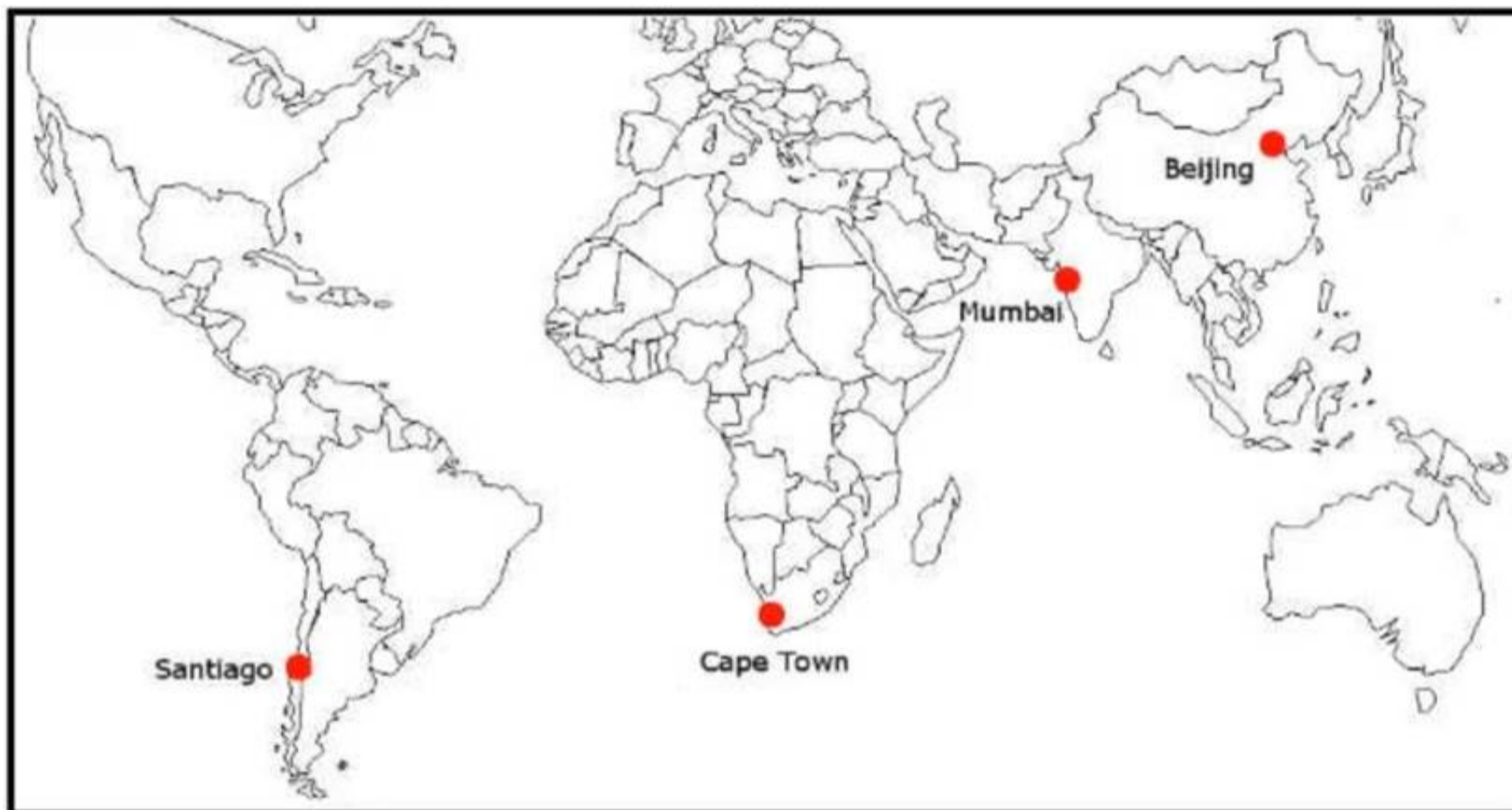
Which three tools are used for ongoing monitoring and maintenance of a voice and video environment? (Choose three.)

- A. flow-based analysis to measure bandwidth mix of applications and their flows
- B. call management analysis to identify network convergence-related failures
- C. call management analysis to identify CAC failures and call quality issues
- D. active monitoring via synthetic probes to measure loss, latency, and jitter
- E. passive monitoring via synthetic probes to measure loss, latency, and jitter
- F. flow-based analysis with PTP time-stamping to measure loss, latency, and jitter

Answer: ACD

NEW QUESTION 225

Refer to the exhibit.



ACME Mining has four data centers in Santiago, Cape Town, Mumbai, and Beijing, full-mesh connected via a 400 Mb/s EVP-LAN. They want to deploy a new mission-critical application with these requirements:

- > cluster heartbeat 2 Mb/s continuous (250 KB/s)
- > cluster heartbeat one-way maximum latency 100 ms

These are the current ping test results between the four data centers:

	Santiago	Cape Town	Mumbai	Beijing
Santiago	-	280 ms	378 ms	409 ms
Cape Town	280 ms	-	185 ms	445 ms
Mumbai	383 ms	176 ms	-	443 ms
Beijing	430 ms	448 ms	442 ms	-

Which hosting data center pair can host the new application?

- A. Mumbai and Beijing
- B. Santiago and Cape Town
- C. Santiago and Mumbai
- D. Cape Town and Mumbai
- E. Cape Town and Beijing
- F. Santiago and Beijing

Answer: D

NEW QUESTION 227

Company XYZ is running BGP as their routing protocol. An external design consultant recommends that TCP path MTU discovery be enabled. Which effect will this have on the network?

- A. It will enhance the performance of TCP-based applications.
- B. It will increase the convergence time.
- C. It will improve the convergence time.
- D. It will create a loop-free path.

Answer: A

NEW QUESTION 228

Which two advantages of using DWDM over traditional optical networks are true? (Choose two.)

- A. inherent topology flexibility and service protection provided without penalty through intelligent oversubscription of bandwidth reservation
- B. ability to expand bandwidth over existing optical Infrastructure
- C. inherent topology flexibility with built-in service protection
- D. inherent topology flexibility with intelligent chromatic dispersion
- E. inherent topology flexibility with a service protection provided through a direct integration with an upper layer protocol

Answer: BC

NEW QUESTION 230

Router R1 is a BGP speaker with one peering neighbor over link "A". When the R1 link/interface "A" fails, routing announcements are terminated, which results in the tearing down of the state for all BGP routes at each end of the link. What is this a good example of?

- A. fault isolation
- B. resiliency
- C. redundancy
- D. fate sharing

Answer: D

NEW QUESTION 235

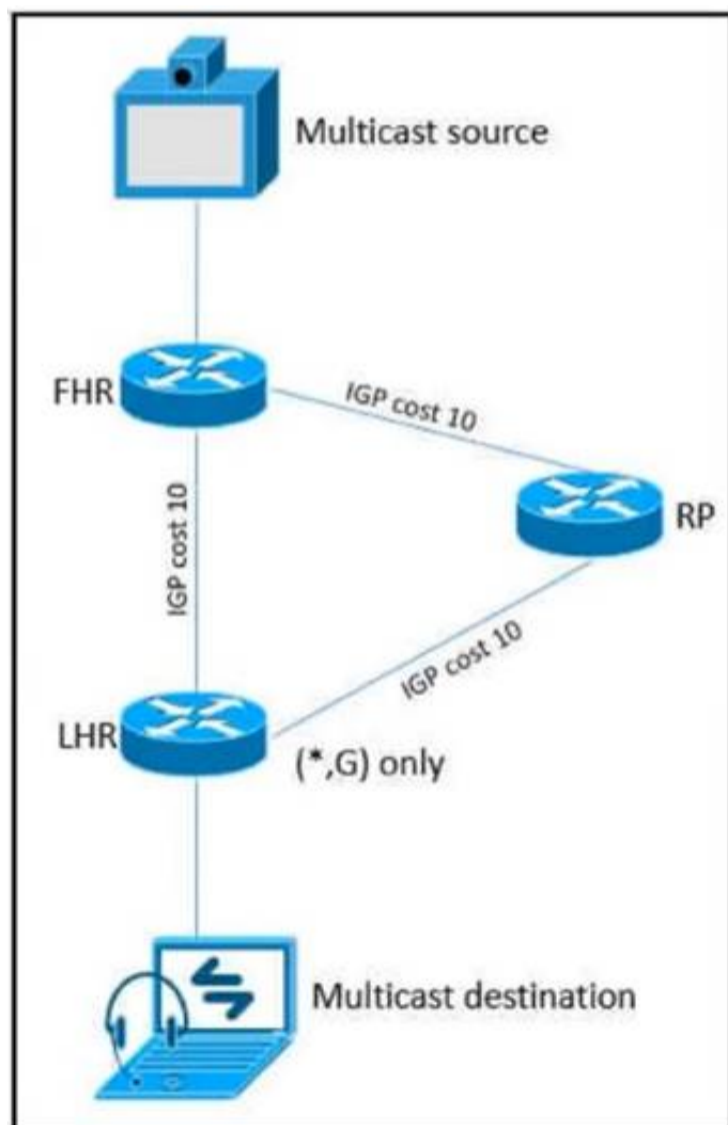
Which design consideration is valid when you contrast fabricPath and trill?

- A. FabricPath uses IS-IS, but TRILL uses VxLAN
- B. FabricPath permits active-active FHRP and TRILL support anycast gateway.
- C. FabricPath Permits ECMP, but TRILL does not
- D. FabricPath permits active-active mode, but TRILL supports only active-standby mode.

Answer: B

NEW QUESTION 238

Refer to the exhibit.



As part of a redesign project, you must predict multicast behavior. What happens to the multicast traffic received on the shared tree (*,G), if it is received on the LHR interface indicated*?

- A. It is dropped due to an unsuccessful RPF check against the multicast source
- B. It is switched given that no RPF check is performed
- C. It is switched due to a successful RPF check against the routing table
- D. It is dropped due to an unsuccessful RPF check against the multicast receiver.

Answer: C

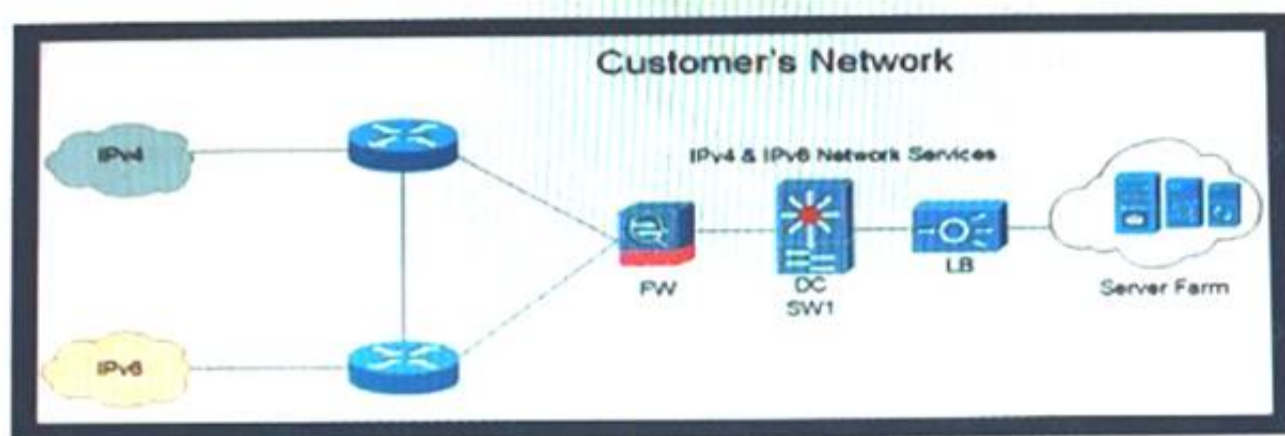
Explanation:

<https://www.cisco.com/c/en/us/support/docs/ip/ip-multicast/16450-mcastguide0.html>

When a multicast packet arrives on an interface, the RPF process checks to ensure that this incoming interface is the outgoing interface used by unicast routing in order to reach the source of the multicast packet. This RPF check process prevents loops. Multicast routing does not forward a packet unless the source of the packet passes a RPF check. Once a packet passes this RPF check, multicast routing forwards the packet based only upon the destination address.

NEW QUESTION 240

Refer to the exhibit.



Company XYZ is currently running IPv4 but has decided to start the transition into IPv6. The initial objective is to allow communication based on IPv6 wherever possible, and there should still be support in place for devices that only support IPv4. These devices must be able to communicate to IPv6 devices as well. Which solution must be part of the design?

- A. address family translation
- B. dual stack
- C. host-to-host tunneling
- D. 6rd tunneling

Answer: B

NEW QUESTION 245

A green data center is being deployed and a design requirement is to be able to readily scale server virtualization Which IETF standard technology can provide this requirement?

- A. data center bridging
- B. unified fabric
- C. Transparent Interconnection of Lots of Links
- D. fabric path

Answer: C

NEW QUESTION 250

Company XYZ wants to deploy OSPF. The design plan requires that two OSPF networks be mutually redistributed at multiple locations and ensure end-to-end connectivity to all of the company's networks Which technology can be used to fulfill the requirements while avoiding the creation of routing loops?

- A. Create a virtual link between ASBRs.
- B. Change the router ID for both ASBRs.
- C. Redistribute routes as external type 2 routes.
- D. Use route maps on ASBRs to filter routes with tags so they are not redistributed.

Answer: D

Explanation:

<https://www.cisco.com/c/en/us/support/docs/ip/open-shortest-path-first-ospf/4170-ospfprocesses.html>

NEW QUESTION 254

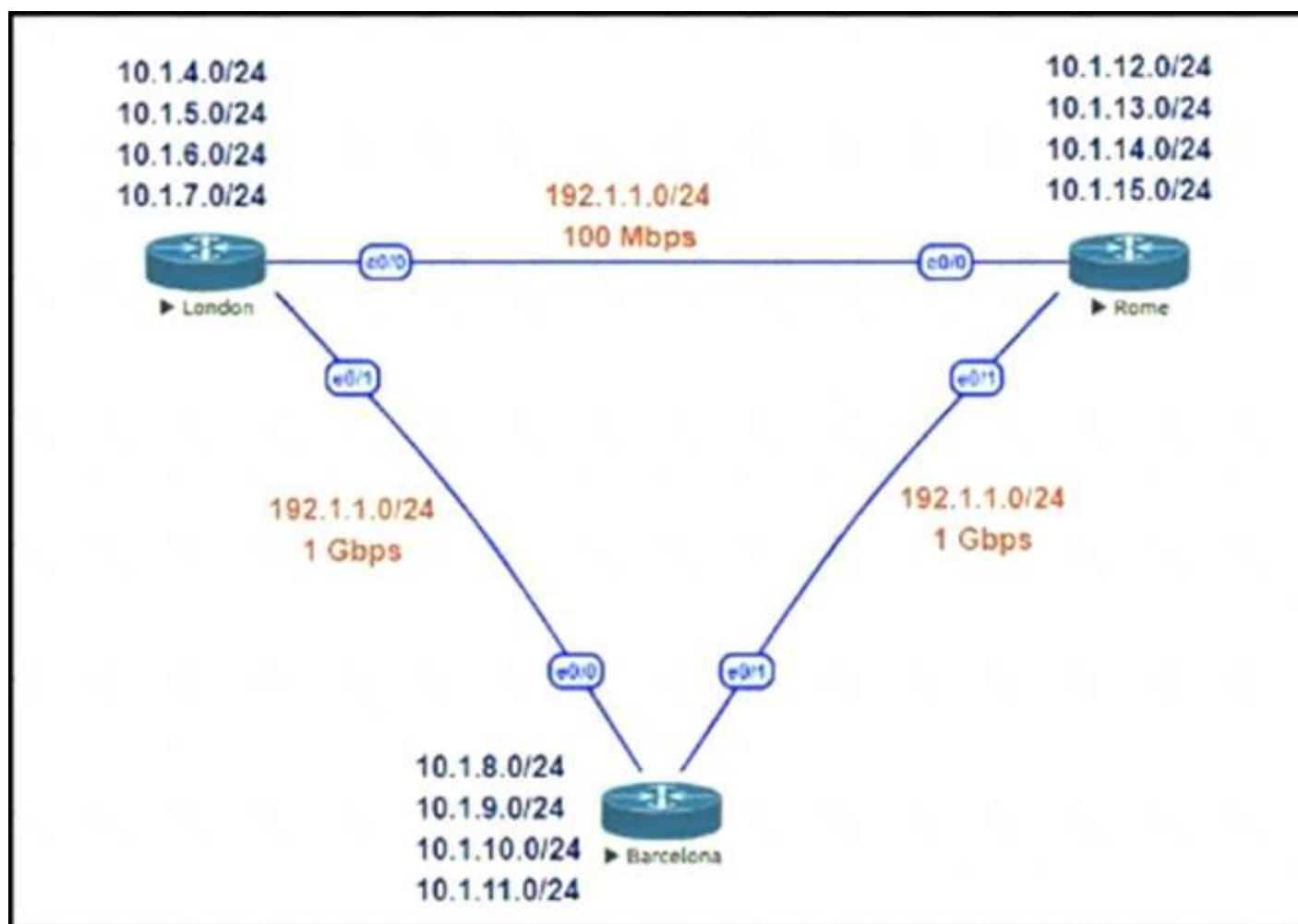
What advantage of placing the IS-IS layer 2 flooding domain boundary at the core Layer in a three-layer hierarchical network is true?

- A. The Layer 1 and Layer 2 domains can easily overlap
- B. It reduces the complexity of the Layer 1 domains
- C. It can be applied to any kind of topology
- D. The Layer 2 domain is contained and more stable

Answer: D

NEW QUESTION 258

Refer to the exhibit.



This network is running EIGRP as the routing protocol and the internal networks are being advertised in EIGRP. Based on the link speeds, all traffic between London and Rome is getting propagated via Barcelona and the direct link between London and Rome is not being utilized under normal working circumstances. The EIGRP design should allow for efficiency in the routing table by minimizing the routes being exchanged. The link between London and Rome should be utilized for specific routes. Which two steps accomplish this task? (Choose two.)

- A. Configure EIGRP route summarization on all the interfaces to summarize the internal LAN routes
- B. Filter the routes on the link between London and Barcelona
- C. Filter the routes on the link between London and Rome
- D. Configure route leaking of summary routes on the link between London and Rome

Answer: AD

NEW QUESTION 260

An enterprise requires MPLS connected branches to access cloud-based Microsoft 365 services over an SD-WAN solution. Internet access is available only at dual regional hub sites that are connected to the MPLS network. Which connectivity method provides an optimum access method to the cloud-based services if one ISP suffers loss or latency?

- A. Cloud onRamp gateway site
- B. Cloud onRamp SWG
- C. Cloud onRamp
- D. Cloud onRamp SaaS

Answer: D

Explanation:

<https://www.cisco.com/c/en/us/td/docs/routers/sdwan/configuration/cloudonramp/vedge-20-x/cloud-onramp-boo>

NEW QUESTION 262

.....

THANKS FOR TRYING THE DEMO OF OUR PRODUCT

Visit Our Site to Purchase the Full Set of Actual 400-007 Exam Questions With Answers.

We Also Provide Practice Exam Software That Simulates Real Exam Environment And Has Many Self-Assessment Features. Order the 400-007 Product From:

<https://www.2passeasy.com/dumps/400-007/>

Money Back Guarantee

400-007 Practice Exam Features:

- * 400-007 Questions and Answers Updated Frequently
- * 400-007 Practice Questions Verified by Expert Senior Certified Staff
- * 400-007 Most Realistic Questions that Guarantee you a Pass on Your FirstTry
- * 400-007 Practice Test Questions in Multiple Choice Formats and Updatesfor 1 Year