

Exam Questions PL-900

Microsoft Power Platform Fundamentals

<https://www.2passeasy.com/dumps/PL-900/>



NEW QUESTION 1

- (Exam Topic 1)

You manage the support team at a rapidly growing company.

Customers and support technicians need a better experience when logging and responding to support requests. You need more visibility into what the support technicians are doing every week.

You need to recommend tools to help the company's needs.

Which tools should you recommend? To answer, drag the appropriate tools to the correct requirements. Each tool may be used once, more than once, or not at all. You may need to drag the split bar between panes or scroll to view content.

NOTE: Each correct selection is worth one point.

Tools	Requirement	Tool
Power Apps	Customers must be able to submit support requests by using a website.	Tool
Microsoft Flow		Tool
Power BI		Tool
Common Data Service		Tool
	Support requests must be created and stored.	Tool
	Support technicians must be notified when a new support request is entered.	Tool
	Support technicians must be able to enter a status report for work completed during the previous week by using a mobile app.	Tool

A. Mastered

B. Not Mastered

Answer: A

Explanation:

Requirement	Tool
Customers must be able to submit support requests by using a website.	Power BI
Support requests must be created and stored.	Common Data Service
Support technicians must be notified when a new support request is entered.	Microsoft Flow
Support technicians must be able to enter a status report for work completed during the previous week by using a mobile app.	Power Apps

NEW QUESTION 2

- (Exam Topic 1)

A rapidly growing company wants to empower users to build apps, automate business processes, and analyze data without requiring I expertise or development skills and without increasing IT expenses and dependencies.

You need to recommend tools so that users can accomplish specific tasks.

Which tools should you recommend? To answer, select the appropriate options in the answer area. NOTE: Each correct selection is worth one point.

Scenario	Application
Build automatic workflows that access multiple data sources.	<div>▼</div> <div>AI Builder Power Apps Microsoft Flow Azure Functions Power BI</div>
Create custom apps that address specific business needs.	<div>▼</div> <div>AI Builder Power Apps Microsoft Flow Azure Functions Power BI</div>
Design insightful data visualizations.	<div>▼</div> <div>AI Builder Power Apps Microsoft Flow Azure Functions Power BI</div>

A. Mastered

B. Not Mastered

Answer: A

Explanation:

Box 1: Microsoft Flow

Microsoft Flow, now called Power Automate, is cloud-based software that allows employees to create and automate workflows and tasks across multiple applications and services without help from developers.

Box 2: Power Apps

PowerApps is a suite of apps, services, connectors and data platform that provides a rapid application development environment to build custom apps for your business needs.

Box 3: Power BI

Power BI is a business analytics solution that lets you visualize your data and share insights across your organization, or embed them in your app or website. Connect to hundreds of data sources and bring your data to life with live dashboards and reports.

Reference:

<https://docs.microsoft.com/en-us/powerapps/powerapps-overview>

NEW QUESTION 3

- (Exam Topic 1)

A large retail company implements Power Apps, Microsoft Flow, and the Common Data Service.

The board of directors is asking whether users are finding value in the technology. The company would like to measure and report usage of the software.

You need to recommend a tool to determine software usage. What should you recommend?

- A. Microsoft Intune
- B. Azure Stream Analytics
- C. Power Platform Analytics
- D. Dynamics 365 Product Insights

Answer: C

Explanation:

The Power Platform Analytics Usage report is the default reports seen by the logged in environment admin. It provides total app launches and daily active users across all apps in the environment. Admins can filter the view with attributes like device platform, player version, country, state, and city.

Reference:

<https://docs.microsoft.com/en-us/power-platform/admin/analytics-powerapps>

NEW QUESTION 4

- (Exam Topic 1)

A company uses Power Apps.

You need to perform administrative tasks for the company.

Which admin centers should you use? To answer, drag the appropriate admin centers to the correct requirements. Each admin center may be used once, more than once, or not at all. You may need to drag the split bar between panes or scroll to view content.

NOTE: Each correct selection is worth one point.

Admin centers	Requirement	Admin center
Azure Active Directory	Create user accounts for Power Apps.	Admin center
Dynamics 365 Admin center	Assign the Environment Maker role to a user.	Admin center
Power Apps Admin center		
Power BI Admin portal		

- A. Mastered
- B. Not Mastered

Answer: A

Explanation:

Box 1: Azure Active Directory

Create the company users in the Azure Active Directory. Box 2: Power Apps admin center

In the Power Apps Admin center, manage environments that you've created and those for which you have been added to the Environment Admin or System Administrator role. From the admin center, you can perform these administrative actions:

Create environments. Rename environments.

Add or remove a user or group from either the Environment Admin or Environment Maker role. Etc.

Reference:

<https://docs.microsoft.com/en-us/power-platform/admin/environments-administration> <https://docs.microsoft.com/en-us/dynamics365/marketing/dynamics-365-admin-center> <https://powerapps.microsoft.com/sv-se/blog/introducing-admin-center-for-powerapps/>

NEW QUESTION 5

- (Exam Topic 1)

A company plans to implement Power Platform apps. The company does not plan to use any development tools or plug-ins.

Which actions can you perform?

For each of the following statements, select Yes if the statement is true. Otherwise, select No. NOTE: Each correct selection is worth one point.

Statement	Yes	No
You can synchronize account names with a third-party proprietary database.	<input type="radio"/>	<input type="radio"/>
You can create invoices from orders and then send the invoices to the customer.	<input type="radio"/>	<input type="radio"/>

- A. Mastered
B. Not Mastered

Answer: A

Explanation:

The Power Platform uses PowerApps, Power BI, and Power Automate (previously named Flow) to customize, extend, and build all the apps you need for your business and unlock the potential of Office 365 and Dynamics 365.

Reference:

https://docs.microsoft.com/en-us/learn/powerplatform/

NEW QUESTION 6

- (Exam Topic 1)

You have version 1.0.0.0 of a published Power Apps app. You create and publish version 2.0.0.0 of the app. A customer goes through the process of restoring the previous version of the app.

How many versions of the app are displayed in the Version tab for the app? To answer, select the appropriate option in the answer area.

You will see

0

1

2

 versions of the app.

- A. Mastered
B. Not Mastered

Answer: A

Explanation:

Reference:

https://docs.microsoft.com/en-us/powerapps/maker/canvas-apps/restore-an-app

NEW QUESTION 7

- (Exam Topic 1)

You need to explain the major components of the Common Data Model (CDM) and their functions. Match each term to its definition.

Instructions: To answer, drag the appropriate term from the column on the left to its definition on the right. Each term may be used once, more than once, or not at all. Each correct match is worth one point.

NOTE: Each correct selection is worth one point.

Tools	Answer Area	
	Purpose	Tool
Entities	Helps jumpstart application development by leveraging business logic, security, and integrations.	<div>Tool</div>
Data connectors		
Common Data Service	A set of records used to store data.	<div>Tool</div>
Common Data Model		
Microsoft Power Platform		
Workflows		

- A. Mastered
B. Not Mastered

Answer: A

Explanation:

Box 1: Microsoft Power Platform

Power Platform combines the robust power of PowerApps, PowerBI, and Microsoft Flow into one powerful business application platform – providing quick and easy app building and data insights. Each component of the Microsoft Power Platform is built on the Common Data Service for Apps. Each component is dynamic by

itself, but brilliant and masterful when combined.
The Microsoft Power platform brings all your data together into a common data model. Box 2: Entities
An entity is a set of records used to store data, similar to how a table stores data within a database. Reference:
<https://community.dynamics.com/365/b/encloud9dynamicss365crm/posts/an-introduction-to-the-microsoft-pow> <https://docs.microsoft.com/en-us/powerapps/maker/common-data-service/data-platform-intro>

NEW QUESTION 8

- (Exam Topic 2)
A company plans to create a Common Data Service environment.
For each of the following statements, select Yes if the statement is true. Otherwise, select No. NOTE: Each correct selection is worth one point.

Statement	Yes	No
You can create a Common Data Service environment in the Power Platform Admin center.	<input type="radio"/>	<input type="radio"/>
You must enable data encryption after you create a Common Data Service environment.	<input type="radio"/>	<input type="radio"/>
You can control security roles and privileges in a Common Data Service Environment from the Power Apps Admin center.	<input type="radio"/>	<input type="radio"/>

- A. Mastered
- B. Not Mastered

Answer: A

Explanation:
Reference:
<https://docs.microsoft.com/en-us/power-platform/admin/create-database> <https://docs.microsoft.com/en-us/power-platform/admin/database-security>

NEW QUESTION 9

- (Exam Topic 2)
A manufacturing company is evaluating AI Builder.
You need to select AI Builder models to address specified requirements.
Which model types should you use? To answer, drag the appropriate model types to the correct requirements. Each model type may be used once, more than once, or not at all. You may need to drag the split bar between panes or scroll to view content.
NOTE: Each correct selection is worth one point.

Model types

prediction

form processing

object detection

Answer Area

Requirement

Identify products without labels or serial numbers.

Identify customers who might not pay their invoices on time.

Model type

model type

model type

- A. Mastered
- B. Not Mastered

Answer: A

Explanation:
Reference:
<https://docs.microsoft.com/en-us/ai-builder/object-detection-model-in-flow> <https://docs.microsoft.com/en-us/ai-builder/prediction-overview>

NEW QUESTION 10

- (Exam Topic 2)
You are creating a model-driven Power Apps app. You want to ensure that the app can be used by individuals who have vision impairments.
For each of the following statements, select Yes if the statement is true. Otherwise, select No. NOTE: Each correct selection is worth one point.

Statement	Yes	No
Power Apps apps can be built with hot key support and designed so they do not require a touch screen or mouse.	<input type="radio"/>	<input type="radio"/>
Only model-driven Power Apps have support for using a screen reader without the need for a connector.	<input type="radio"/>	<input type="radio"/>
The accessibility checker can be run for your Power Apps app to provide notifications of accessibility violations as well as tips for making it even more user friendly.	<input type="radio"/>	<input type="radio"/>

- A. Mastered
B. Not Mastered

Answer: A

Explanation:

Box 1: Yes

You can use keyboard shortcuts in PowerApps. Keyboard shortcuts give you an alternate way to do common tasks instead of using your mouse or tapping with your finger. They help in seamless navigation of the interface.

Box 2: No

The following software combinations are the supported recommendations for consuming PowerApps with a screen reader:

Windows: Microsoft Edge / Narrator macOS: Safari / VoiceOver Android: PowerApps app / Talkback iOS: PowerApps app / VoiceOver

Box 3: Yes
Users who have vision, hearing, or other impairments can use your canvas app more easily and successfully if you consider accessibility as you design how the app looks and behaves. If you're not sure how to make your app more accessible, you can run the Accessibility checker in PowerApps Studio. This tool not only finds potential accessibility issues but also explains why each might be a potential problem for users who have a specific disability and offers suggestions on how to resolve each issue. The Accessibility checker detects screen-reader and keyboard issues for you, and you can find information about how to fix color-contrast issues by using accessible colors.

Reference:

<https://docs.microsoft.com/en-us/powerapps/user/keyboard-shortcuts> <https://docs.microsoft.com/en-us/powerapps/user/screen-reader>

<https://docs.microsoft.com/en-us/powerapps/maker/canvas-apps/accessibility-checker>

NEW QUESTION 10

- (Exam Topic 2)

You create a business rule on contact entity to enforce the requirement that users must enter either a telephone number, fax number, or an email when creating a new record.

The company decides to remove fax number from the condition. You need to update the business rule.

What are two ways of achieving the goal? Each correct answer presents a complete solution. NOTE: Each correct selection is worth one point.

- A. Save a copy of the rule and change the condition.
B. Deactivate and delete the original rule.
C. Deactivate the business rule and change the condition.
D. Take a snapshot of the business rule and change the condition.
E. Change the condition and activate the change.

Answer: AD

Explanation:

Reference:

<https://docs.microsoft.com/en-us/powerapps/maker/canvas-apps/working-with-rules>

NEW QUESTION 14

- (Exam Topic 2)

A bank uses Power Platform apps and flows to support business processes.

The company would like to use historical client data to predict whether a client's loan application is likely to be approved or rejected.

You need to use AI Builder to implement the solution.

Which four actions should you perform in sequence? To answer, move the appropriate actions from the list of actions to the answer area and arrange them in the correct order.

Actions

Publish the model.

Export data into AI Builder.

Train the model.

Import data into Common Data Service.

Use the model in PowerApps or Microsoft Flow.

Answer area

➡

⬅

⬆

⬇

- A. Mastered
B. Not Mastered

Answer: A

Explanation:

Step 1: Import data into Common Data Service.

AI Builder requires the use of Common Data Service, which is the data platform for PowerApps and allows you to store and manage business data. Common Data Service is the platform on which Dynamics 365 apps are built so if you're a Dynamics 365 customer, your data is already in Common Data Service.

Step 2: Train the model Step 3: Publish the model

The last step is to publish your model.

Step 4: Use the model in PowerApps or Microsoft Flow. Reference:

<https://docs.microsoft.com/en-us/ai-builder/build-model>

NEW QUESTION 16

- (Exam Topic 2)

A coworker is creating an app in Power Apps and needs to automatically synchronize data from an external source. The coworker is unable to locate a suitable Microsoft approved connector template in AppSource.

You need to recommend a solution for the coworker. What should you recommend?

- A. Create a custom connector.
- B. Ask the outside source to send you the data once a week.
- C. Use Microsoft Flow to connect to the database.
- D. Open a ticket with Microsoft and request a new connector.
- E. Use Microsoft Azure Service Bus.

Answer: A

Explanation:

There are 250 + predefined connectors that you can use in your PowerApps and in your Microsoft Flows. If you do not find any that suits your needs you have the possibility to create a Custom Connector.

Note: A Custom Connector is a wrapper around a REST API (Logic Apps also supports SOAP APIs) that allows Logic Apps, Microsoft Flow, or PowerApps to communicate with that REST or SOAP API.

Reference:

<https://carinaclaesson.com/2019/09/06/setting-up-a-custom-connector-from-an-openapi-file-and-utilizing-it-in-p>

NEW QUESTION 18

- (Exam Topic 2)

A company plans to use AI Builder to help improve business performance. You need to determine which AI Models are available for use.

Which three types of models can you use? Each correct answer presents a complete solution. NOTE: Each correct selection is worth one point.

- A. linear regression
- B. binary classification
- C. object detection
- D. anomaly detection
- E. text classification

Answer: BCE

Explanation:

Reference:

<https://carlidesouza.com/using-the-ai-builder-in-the-microsoft-power-platform-for-binary-classification/>

NEW QUESTION 23

- (Exam Topic 3)

You are a regional sales manager for a large internet retailer. You create a series of Power BI reports and dashboards to help sales associates be more productive and increase sales.

Sales are not increasing as expected.

You need to determine if the new reports are being used and send emails to sales associates to provide guidance on how to use the reports and dashboards.

Which features should you use? To answer, select the appropriate options in the answer area. NOTE: Each correct selection is worth one point.

Requirement

Send an email to the sales associates on a predetermined schedule.

	▼
Subscribe	
Share	
Favorites	
Publisher	

Quantify the adoption usage from the sales associates.

	▼
Explore	
Favorites	
Usage metrics	
Performance inspector	

- A. Mastered
- B. Not Mastered

Answer: A

Explanation:

Reference:
<https://docs.microsoft.com/en-us/power-bi/consumer/end-user-subscribe> <https://docs.microsoft.com/en-us/power-bi/service-usage-metrics>

NEW QUESTION 26

- (Exam Topic 3)
You are a sales representative. You create a Power BI report to visualize data from a Microsoft Excel workbook. Users need to be able to view and share the report.
Which two actions should you perform? Each correct answer presents part of the solution. NOTE: Each correct selection is worth one point.

- A. Pin the report to a dashboard.
- B. Export the data.
- C. Publish the dashboard.
- D. Share the dashboard.

Answer: AD

Explanation:

Reference:
<https://docs.microsoft.com/en-us/power-bi/create-reports/service-dashboard-pin-live-tile-from-report> <https://docs.microsoft.com/en-us/power-bi/collaborate-share/service-share-dashboards#limitations-andconsidera>

NEW QUESTION 30

- (Exam Topic 3)
A company is using Power BI to build visualizations. The company's IT support team needs to know when to install Power BI Desktop on users' computers and where the Power BI Service will suffice to perform tasks. You need to recommend solutions for the company.
What should you recommend? To answer, drag the appropriate components to the correct requirements. Each component may be used once, more than once, or not at all. You may need to drag the split bar between panes or scroll to view content.
NOTE: Each correct selection is worth one point.

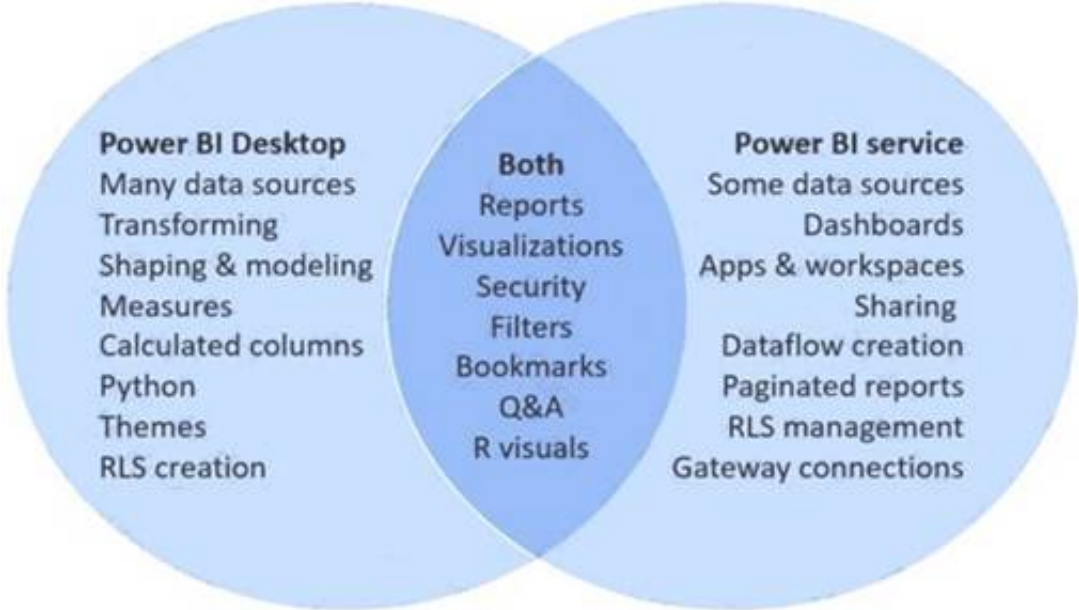
Tools	Answer Area	
	Requirement	Component
Power BI Service only	Create dashboards.	Tool
Power BI Desktop only	Create reports.	Tool
Power BI Desktop or Power BI Service	Create calculated columns.	Tool
	Configure security.	Tool
	Configure sharing.	Tool

- A. Mastered
- B. Not Mastered

Answer: A

Explanation:

In a Venn diagram comparing Power BI Desktop and the Power BI service, the area in the middle shows how the two overlap. Some tasks you can do in either Power BI Desktop or the service. The two sides of the Venn diagram show the features that are unique to the application and the service.



Reference:
<https://docs.microsoft.com/en-us/power-bi/designer/service-service-vs-desktop>

NEW QUESTION 32

- (Exam Topic 3)

A manufacturing company uses Internet of Things (IoT) devices to monitor the temperature in different parts of their warehouse. The current IoT monitoring software is extremely outdated and is not user friendly. You need to view near-real time information from the IoT devices in Power BI Service dashboards. Which tool should you use?

- A. Scheduled refresh dataset
- B. Streaming dataset
- C. Content Pack dataset
- D. Power BI dataflows
- E. Quick Insights

Answer: B

Explanation:

<https://docs.microsoft.com/en-us/power-bi/service-real-time-streaming>
<https://powerbi.microsoft.com/en-us/blog/using-power-bi-real-time-dashboards-to-display-iot-sensor-data-astep-by-step-tutorial/>

NEW QUESTION 35

- (Exam Topic 3)
A company needs to create a series of mobile applications to empower their field engineers to accomplish several tasks with varying degrees of complexity. Match each option to its answer.
Instructions: To answer, drag the appropriate app type from the column on the left to its definition on the right. Each app type may be used once, more than once, or not at all.
NOTE: Each correct match is worth one point.

App types	Answer Area	
	Definition	App type
model-driven		
dashboard	Quickly create apps for very complex business processes with very little or no code.	App type
dataset		
canvas	Create simple apps with a highly customizable user interface layouts.	App type

- A. Mastered
- B. Not Mastered

Answer: A

Explanation:

Box 1: canvas
Both model-driven and canvas apps allow you to easily build business apps. They both share access to the Common Data Service providing standard and custom entities. Canvas apps start with your user experience, crafting a highly tailored interface with the power of a blank canvas and connecting it to 200 data sources. Canvas apps can be built for web, mobile, and tablet applications. Model-driven apps start with your data model – building up from the shape of your core business data and processes in the Common Data Service to model forms, views, and other components. Model-driven apps automatically generate great UI that is responsive across devices.
Box 2: model-driven Reference:
<https://powerapps.microsoft.com/sv-se/blog/introducing-model-driven-apps/>

NEW QUESTION 39

- (Exam Topic 3)
A carpet cleaning company uses Dynamics 365 Sales. The process for entering customer information during onsite sales calls is very complicated. The company wants a simplified screen that allows salespeople to capture the customer name, phone number, and other information while speaking to the customer. You need to recommend a solution that works on various types of mobile devices. What should you recommend?

- A. Common Data Service
- B. Microsoft Flow
- C. AI Builder
- D. Canvas app
- E. Power BI

Answer: E

Explanation:

Reference:
<https://powerapps.microsoft.com/en-us/build-powerapps/>

NEW QUESTION 44

- (Exam Topic 3)
A company uses Microsoft Excel workbooks to store consolidated sales data. Workbooks are stored on OneDrive for Business. Match each Power BI feature to its requirement. To answer, drag the appropriate features from the column on the left to its requirement on the right. Each option may be used once, more than once, or not at all.
NOTE: Each correct match is worth one point.



- A. Mastered
- B. Not Mastered

Answer: A

Explanation:

Reference:

<https://docs.microsoft.com/en-us/power-bi/consumer/mobile/mobile-reports-in-the-mobile-apps> [https://docs.microsoft.com/en-us/power-bi/create-reports/power-bi-tutorial-q-and-a#:~:text=Sometimes%20the%](https://docs.microsoft.com/en-us/power-bi/create-reports/power-bi-tutorial-q-and-a#:~:text=Sometimes%20the%20)

NEW QUESTION 48

- (Exam Topic 3)

You are creating Power BI reports.

You need to choose which filters you can use for reports.

Which three types of filters can you use? Each correct answer presents a complete solution. NOTE: Each correct selection is worth one point.

- A. drill-down
- B. automatic
- C. database
- D. manual
- E. external

Answer: ABD

Explanation:

Reference:

<https://docs.microsoft.com/en-us/power-bi/power-bi-report-filter-types>

NEW QUESTION 52

- (Exam Topic 3)

A company runs a call center to handle customer support inquiries.

The company tracks metrics including the number of incoming calls, call resolution rates, and escalations. The company wants to display the metrics on a shared screen that is visible to all call center staff.

You need to recommend a solution for the company. Which Power Platform feature should you recommend?

- A. AI Builder
- B. Power Automate
- C. Power Apps
- D. Power BI

Answer: D

NEW QUESTION 56

- (Exam Topic 3)

This question requires that you evaluate the BOLD text to determine if it is correct.

You have a Power BI report with a page named RevReceived. The page shows revenue received by your company. You want to create an almost identical page that shows net revenue instead of gross revenue. To accomplish this task, you modify the RevReceived page.

Review the underlined text. If it makes the statement correct, "No change is needed". If the statement is incorrect, select the answer choice that makes the statement correct.

- A. No change is needed.
- B. duplicate the RevReceived page.
- C. import the RevReceived page.
- D. copy the visuals from RevReceived to a new page.

Answer: B

Explanation:

Reference: https://www.tutorialspoint.com/power_bi/power_bi_quick_guide.htm

NEW QUESTION 58

- (Exam Topic 3)

You create a Power BI dashboard that displays data from Dynamics 365 Customer Engagement. You need to share the Power BI dashboard with coworkers.

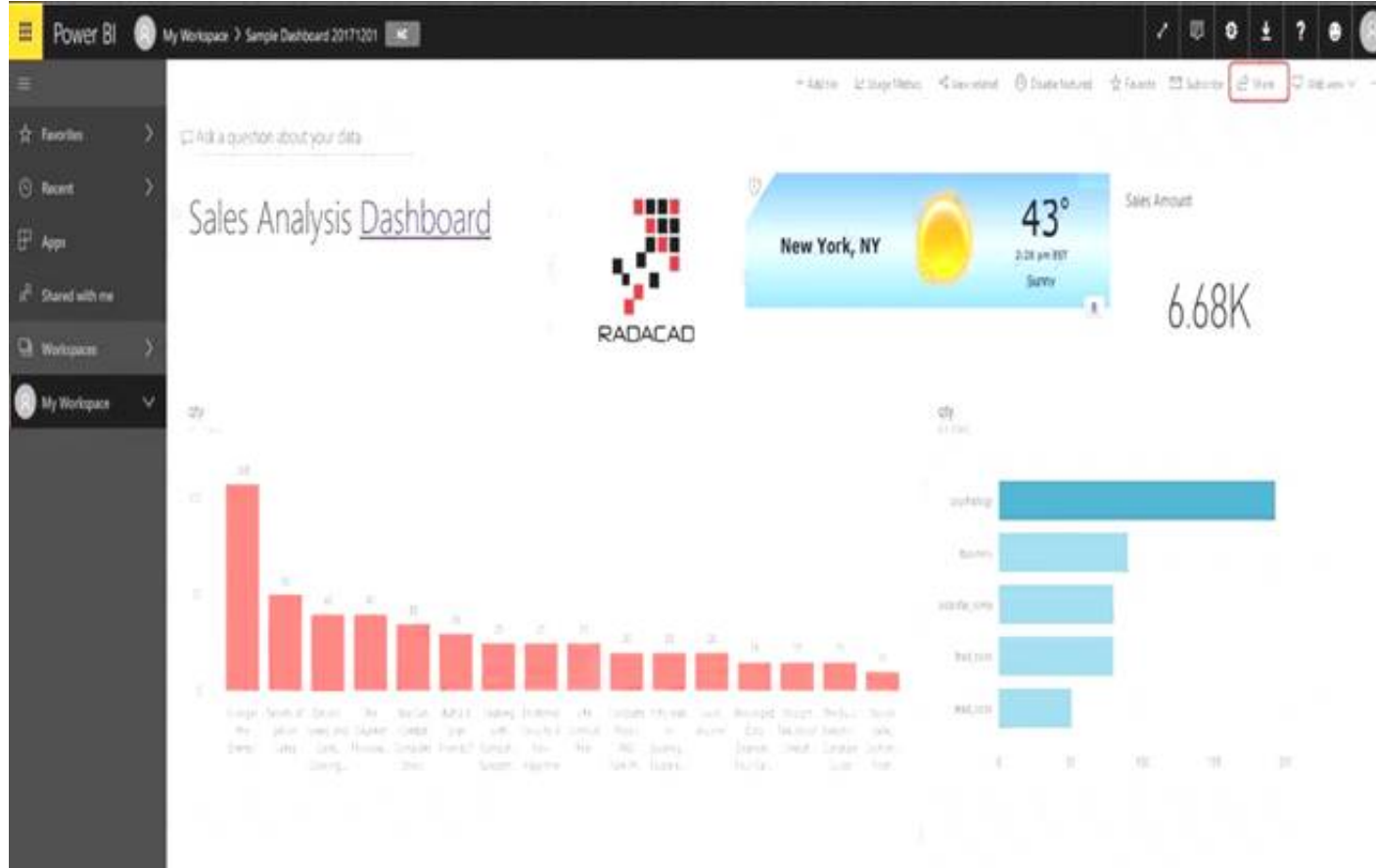
What are three possible ways to achieve the goal? Each correct answer presents a complete solution. NOTE: Each correct selection is worth one point.

- A. Create a Power BI workspace and grant coworkers permissions.
- B. Publish the dashboard as an app to your coworkers.
- C. Export the data into Common Data Service for others to manipulate in Power BI.
- D. Export the data to Microsoft Excel for coworkers to import and view in Power BI.
- E. Embed reports in your company's internal web portal.

Answer: ABE

Explanation:

A: Basic Sharing for Dashboards and Reports through a workspace is the most common way of sharing the Power BI content. Basic Sharing is very simple and easy to use method. You can simply click on the Share button in the dashboard or report, and then share it with other users.



B: Apps are great sharing method for multiple environment, and best way of sharing for users in production environment.

Power BI App is the solution for multiple environment approach. With Power BI App, your development environment (workspace), and user environment (App) are isolated from each other.

Note: If you are using SharePoint online as a portal for document management and some other reasons already, then consider using Embed in SharePoint Online feature of Power BI reports. This method is secure and you can share the report only with Power BI users you want.

E: Sometimes, you don't need a secure way of sharing, you may search for an easy and free way of sharing, and your content is not confidential or sensitive.

Publish to web is your friend in such situation. This is the only free way of sharing in Power BI, but be aware that this method is not secure.

Publish to web method, gives you an embed code, which you can use in any web pages to embed the Power BI report in it

Reference:

https://radacad.com/power-bi-sharing-methods-comparison-all-in-one-review

NEW QUESTION 63

- (Exam Topic 3)

Your company has an on premises Microsoft SQL Server database that contains legacy sales data. You must display information from the database in a new Power Apps app.

You need to establish a secure connection between the database and the app. What should you use?

- A. Data source
- B. App
- C. Gateway
- D. Flow

Answer: C

Explanation:

For an on-premises database, identify a data gateway that was shared with you (or create one).

Specify Connect using on-premises data gateway, type or paste the server name, the database name, the user name, and the password for the database that you want to use, and specify the authentication type and the gateway.

Reference:

https://docs.microsoft.com/en-us/powerapps/maker/canvas-apps/connections/connection-azure-sqldatabase

NEW QUESTION 66

- (Exam Topic 4)

You create a Power Apps canvas app.

You need to ensure that your coworkers can run the app. What should you do?

- A. Share the app.
- B. Send the URL for the app to coworkers.
- C. Add a license for the app.
- D. Create a Flow for the app.

Answer: A

Explanation:

Reference:

<https://docs.microsoft.com/en-us/powerapps/maker/canvas-apps/share-app>

NEW QUESTION 67

- (Exam Topic 4)

A company uses Dynamics 365 Supply Chain Management.

The company wants to build customer user interfaces that add additional functionality. You need to recommend a solution for the company.

What should you recommend?

- A. Power BI
- B. Power Apps canvas apps
- C. AI Builder
- D. Microsoft Flow

Answer: B

Explanation:

Microsoft Power Apps provides a consistent experience for building apps and extending Office 365 and Dynamics 365. Investments include enhancements on Unified Interface, support for embedding canvas apps in model-driven apps and native support of the Common Data Service for Apps.

Reference:

<https://powerapps.microsoft.com/en-us/roadmap/>

NEW QUESTION 68

- (Exam Topic 4)

You are designing a Power Apps solution that allows users to upload a status report directly to the company Microsoft SharePoint project management site from their mobile device.

For each of the following statements, select Yes if the statement is true. Otherwise, select No. NOTE: Each correct selection is worth one point.

Statement	Yes	No
You should build a model-driven app in Power Apps.	<input type="radio"/>	<input type="radio"/>
You should build a canvas app in Power Apps.	<input type="radio"/>	<input type="radio"/>
Users must download and run the Power Apps mobile application to use the solution.	<input type="radio"/>	<input type="radio"/>

- A. Mastered
- B. Not Mastered

Answer: A

Explanation:

Box 1: No

Box 2: Yes

Box 3: Yes

When you create an app, or someone shares an app with you, you can run that app on Windows, iOS, Android, or in a web browser.

References:

<https://docs.microsoft.com/en-us/powerapps/maker/canvas-apps/app-from-sharepoint> <https://docs.microsoft.com/en-us/powerapps/user/run-app-client>

NEW QUESTION 69

- (Exam Topic 4)

A company plans to implement Power Apps in a Power Platform environment. You need to implement other required components.

Match each option to its function. To answer, drag the appropriate option from the column on the left to its function on the right. Each option may be used once, more than once, or not at all.

NOTE: Each correct match is worth one point.

Products	Answer Area	
	Function	Product
Microsoft Azure	Implement user authentication.	<input type="text"/>
custom connector	Send data to a Microsoft OneNote notebook in the same tenant.	<input type="text"/>
Microsoft Flow		
model-driven app		
canvas app		

- A. Mastered
- B. Not Mastered

Answer: A

Explanation:

Reference:

<https://powerapps.microsoft.com/en-us/blog/implementing-role-based-permission/> <https://www.encorebusiness.com/blog/powerapps-flow-can/>

NEW QUESTION 74

- (Exam Topic 4)

A company has a Power Apps app that is used by most employees. The company is expanding to other countries/regions.

You need to recommend a solution to translate text generated within the Power Apps in near real-time.

What should you recommend?

- A. Microsoft Azure Synapse Analytics
- B. Microsoft Azure Cognitive Services
- C. Common Data Service connector
- D. Power BI

Answer: B

Explanation:

Reference:

https://docs.microsoft.com/en-gb/azure/cognitive-services/welcome?ocid=AID2339762_TWITTER_oo_spl100000827964250

<https://powerapps.microsoft.com/en-us/blog/cognitive-services-with-powerapps-using-custom-connectors/>

NEW QUESTION 78

- (Exam Topic 4)

A company is building a model-driven app.

You need to create and configure the objects needed for the app.

Which component categories should you use? To answer, drag the appropriate component categories to the correct objects. Each component category may be used once, more than once, or not at all. You may need to drag the split bar between panes or scroll to view content.

NOTE: Each correct selection is worth one point.

Component categories	Object	Component category
UI	Relationship	
Data	Form	
Logic	Business rule	
Visualization	View	

- A. Mastered
- B. Not Mastered

Answer: A

Explanation:

Reference:

<https://docs.microsoft.com/en-us/powerapps/maker/model-driven-apps/model-driven-app-components>

NEW QUESTION 81

- (Exam Topic 4)

You create a canvas app that allows contractors to submit time they work against a project.

Contractors must be able to use the canvas app to enter time. Contractors must not be able to perform any other actions in the app.

You need to configure permissions for the contractors. Which type of permissions should you use?

- A. application-level
- B. task-level
- C. record-level
- D. field-level

Answer: D

Explanation:

Field-level security feature to allow more granular control of security at the field level. Reference:

<https://docs.microsoft.com/en-us/power-platform/admin/security-roles-privileges> <https://docs.microsoft.com/en-us/power-platform/admin/wp-security-cds>

NEW QUESTION 83

- (Exam Topic 4)

A company is considering implementing Power Platform.

For which three scenarios should you consider implementing Power Apps portals? Each correct answer presents a complete solution.

NOTE: Each correct selection is worth one point.

- A. a customer support website that includes knowledge search and support for document uploads

- B. a public website that supports multi-lingual communities with forums and blogs support
- C. an online store with e-commerce requirements including payment processing
- D. a secure website for vendors accessing data stored in Common Data Service
- E. an internal website for employees to access selected data from Dynamics 365 Finance

Answer: ABE

Explanation:

Reference:
<https://docs.microsoft.com/en-us/powerapps/maker/portals/portal-templates>

NEW QUESTION 84

- (Exam Topic 4)

A company is building a Power Apps Portals. You need to select page components. Which components should you use? To answer, drag the appropriate components to the correct requirements. Each component may be used once, more than once, or not at all. You may need to drag the split bar between panes or scroll to view content. NOTE: Each correct selection is worth one point.

Components

list

form

Iframe

connector

Answer Area

Requirement	Component
Display a single record from Common Data Service.	<div>Component</div>
Display a list of records from a Microsoft SharePoint list.	<div>Component</div>
Display a list of records from Common Data Service.	<div>Component</div>

- A. Mastered
- B. Not Mastered

Answer: A

Explanation:

Reference:
<https://docs.microsoft.com/en-us/powerapps/maker/portals/compose-page>
<https://docs.microsoft.com/en-us/powerapps/maker/portals/compose-page#add-iframe>

NEW QUESTION 85

- (Exam Topic 4)

A user is creating their first canvas app in Power Apps. The user does not know what types of controls they can include. You need to recommend solutions for the user. Which types of controls would you recommend using in Power Apps? To answer, select the appropriate control in the dialog box in the answer area. NOTE: Each correct selection is worth one point.

Scenario

View the date, time, and location of upcoming internal meetings.

Create a meeting request from within the app.

Drill down into customer contact records in Dynamics 365 Sales to view a photo of a customer you are meeting.

Control

Meeting-screen template

Gallery

List box

Meeting-screen template

Gallery

List box

Image

People-screen template

Add picture

- A. Mastered
- B. Not Mastered

Answer: A

Explanation:

Box 1: Gallery
A Gallery control can show multiple records from a data source, and each record can contain multiple types of data. For example, a Gallery control can show multiple contacts with each item showing contact information that includes a name, an address, and a phone number for each contact.
Box 2: Meeting-screen template
In a canvas app, add a meeting screen that lets users create and send meeting requests from their Office 365 Outlook accounts. Users can search for attendees in their org and add external email addresses. If your tenant has meeting rooms built into Outlook, users can select a location as well.
Box 3: Image
If you add one or more Image controls to your app, you can show individual images that aren't part of a data set, or you can incorporate images from records in data sources.
Reference:

<https://docs.microsoft.com/en-us/powerapps/maker/canvas-apps/screen-templates/meeting-screen-overview>

NEW QUESTION 90

- (Exam Topic 4)

A company plans to create a canvas app that connects to three databases with different proprietary database formats. What is the minimum number of connectors required?

- A. 1
- B. 2
- C. 3

Answer: B

NEW QUESTION 91

- (Exam Topic 4)

You create a canvas app by using the Generate from data feature. The app connects to a Microsoft SharePoint list.

For each of the following statements, select Yes if the statement is true. Otherwise, select No. NOTE: Each correct selection is worth one point.

Statement	Yes	No
A screen is generated that contains a browsable list of SharePoint list items.	<input type="radio"/>	<input type="radio"/>
A screen is generated that allows users to update SharePoint list items.	<input type="radio"/>	<input type="radio"/>

- A. Mastered
- B. Not Mastered

Answer: A

Explanation:

Reference:

<https://docs.microsoft.com/en-us/powerapps/maker/canvas-apps/app-from-sharepoint>

NEW QUESTION 95

- (Exam Topic 5)

A software company plans to use Power Automate.

For each of the following statements, select Yes if the statement is true. Otherwise, select No. NOTE: Each correct selection is worth one point.

Statement	Yes	No
You must certify custom connectors before users in other departments within your organization can use the connectors.	<input type="radio"/>	<input type="radio"/>
You must use Microsoft Azure API apps to create a public custom connector.	<input type="radio"/>	<input type="radio"/>

- A. Mastered
- B. Not Mastered

Answer: A

Explanation:

Reference:

<https://docs.microsoft.com/en-us/connectors/custom-connectors/share>

NEW QUESTION 96

- (Exam Topic 5)

You are building a Power Virtual Agents chatbot for a company.

You are working with an existing topic and would like to call an action.

Which technology is available to perform the action?

- A. Power Virtual Agent Entity
- B. Power Apps
- C. Power Automate
- D. Power BI

Answer: B

NEW QUESTION 101

- (Exam Topic 5)

A company plans to implement Power Apps.

For each of the following statements, select Yes if the statement is true. Otherwise, select No. NOTE: Each correct selection is worth one point.

Answer Area	Statement	Yes	No
	Building Power Apps apps requires proficiency in JavaScript programming.	<input type="radio"/>	<input type="radio"/>
	You must select one of the app templates to create an app.	<input type="radio"/>	<input type="radio"/>

- A. Mastered
- B. Not Mastered

Answer: A

Explanation:

Reference:

https://docs.microsoft.com/en-us/powerapps/maker/

NEW QUESTION 106

- (Exam Topic 5)

A business plans to including AI Builder. Which actions can you perform?

For each of the following statements, select Yes if the statement is true. Otherwise, select No.

NOTE: Each correct selection is worth one point.

Statement	Yes	No
You can use a text classification model in AI Builder to retrieve text and analyze its meaning.	<input type="radio"/>	<input type="radio"/>
You can tag Instagram posts that mention your new product.	<input type="radio"/>	<input type="radio"/>
You can send results about the number of mentions of your new product in Instagram to Power BI for inclusion on a dashboard.	<input type="radio"/>	<input type="radio"/>

- A. Mastered
- B. Not Mastered

Answer: A

Explanation:

Reference:

https://docs.microsoft.com/en-us/ai-builder/text-classification-model-in-flow

NEW QUESTION 108

- (Exam Topic 5)

You plan to use Microsoft Flow to monitor what people are saying about your company's products. You store the feedback for research and development purposes.

You need to recommend Flow components to use for the solution.

To answer, drag the appropriate components to the correct requirements. Each component may be used once, more than once, or not at all. You may need to drag the split bar between panes or scroll to view content.

NOTE: Each correct selection is worth one point.

Components	Requirement	Component
action		
expression	Retrieve the top five posts from your company's Facebook page.	Component
service	Enter the resulting posts into the product database.	Component
trigger	Combine author and link fields into a single field.	Component
flow type	Run flow every hour.	Component

- A. Mastered
- B. Not Mastered

Answer: A

Explanation:

Box 1: Trigger

A trigger is something that triggers or starts the workflow. It could be a new file uploaded to a document library, a new item created in the list or an email sent to your Inbox – something that will start (kick-off the workflow).

There are two types of triggers:

- Automatic trigger is pre-programmed into the workflow based on a certain rule (i.e. new document or item created, email sent, etc.)
- Manual Trigger is a trigger initiated by a user. Unlike with automatic trigger above, the workflow will only start when initiated manually by the end user (for example, from the Document Library for a selected file). Manual trigger is only supported for certain types of workflows (i.e. Get feedback from your manager for the selected file)

Box 2: action

An action is something that occurs as a result of the workflow. Box 3: expression

Sometimes users just need to do basic operations like getting the current time, adding numbers together, or replacing a part of a string of text. That's possible inline in any flow action. Microsoft Flow leverages the same Workflow Definition Language used by Azure Logic apps. For new users who are unfamiliar with the expression language, there is an inline help experience that shows how to use each expression as they build out their flow.

Box 4: flow type

There are four different Flow types that you can choose from when starting out. You can create a scheduled flow, automated flow, instant flow, or a business process flow.

Reference:

<https://sharepointmaven.com/3-major-components-microsoft-flow/> <https://www.avepoint.com/blog/office-365/office-365-automation/> <https://flow.microsoft.com/de-de/blog/use-expressions-in-actions/>

NEW QUESTION 113

- (Exam Topic 5)

You are creating a canvas app that uses one connector.

Which two objects are provided to Power Apps by the connector? Each correct answer presents a complete solution.

NOTE: Each correct selection is worth one point.

- A. tables
- B. customizations
- C. triggers
- D. actions

Answer: AD

NEW QUESTION 117

- (Exam Topic 5)

A company plans to synchronize data between Dynamics 365 Supply Chain management and Dynamics 365 Sales.

For each of the following statements, select Yes if the statement is true. Otherwise, select No. NOTE: Each correct selection is worth one point.

Statement	Yes	No
You can implement a process-based integration by using the Data Integration feature.	<input type="radio"/>	<input type="radio"/>
You can use Microsoft Azure Data Migration to synchronize data between the apps.	<input type="radio"/>	<input type="radio"/>

- A. Mastered
- B. Not Mastered

Answer: A

Explanation:

Reference:

<https://docs.microsoft.com/en-us/business-applications-release-notes/april19/cdm-data-integration/cds-data-integ>

NEW QUESTION 122

- (Exam Topic 5)

A company uses Dynamics 365 Supply Chain Management.

When a sales order is created for one of the customers that a specific user manages, a Microsoft Outlook task must be created to remind the user to perform any follow up activities that are required.

You need to implement the functionality to create Outlook tasks.

Which two features should you use? Each correct answer presents part of the solution. NOTE: Each correct selection is worth one point.

- A. AI Builder
- B. Power Apps
- C. Business Events
- D. Microsoft Flow
- E. Common Data Service

Answer: CD

Explanation:

Business events in Microsoft Power Automate
Business events can be consumed in Microsoft Power Automate via the application connector. The connector has a trigger that is named when a business event occurs. This trigger can be used to subscribe to any of the business events that are available in the target instance of the application.
Reference:
<https://docs.microsoft.com/en-us/dynamics365/fin-ops-core/dev-itpro/business-events/business-events-flow>

NEW QUESTION 127

- (Exam Topic 5)
A project deadline is approaching. The project manager reports that there are still a number of critical tasks that are not complete. You need to implement Power Automate to help streamline processes. Which types of flows should you use? To answer, drag the appropriate flow types to the correct requirement. Each flow type may be used once, more than once, or not at all. You may need to drag the split bar between panes or scroll to view content.
NOTE: Each correct selection is worth one point.

Flow types	Answer Area	
	Requirement	Flow type
<div>automated</div>	Ensure that all of the steps for completing tasks are consistently followed by all team members.	<div></div>
<div>instant</div>	Allow users to send an email to the project lead whenever a task is completed.	<div></div>
<div>scheduled</div>	Automatically send a list of completed tasks at the end of each week.	<div></div>
<div>business process</div>		

- A. Mastered
- B. Not Mastered

Answer: A

Explanation:

Reference:
<https://docs.microsoft.com/en-us/power-automate/business-process-flows-overview> <https://docs.microsoft.com/en-us/power-automate/get-started-logic-flow>
<https://docs.microsoft.com/en-us/power-automate/run-scheduled-tasks>

NEW QUESTION 128

- (Exam Topic 5)
A company uses Power Automate. Which three items can trigger flows? Each correct answer presents a complete solution. NOTE: Each correct selection is worth one point.

- A. Lifecycle Services
- B. Microsoft 365 Admin center
- C. Common Data Service
- D. Microsoft Outlook 365
- E. Microsoft Windows Desktop

Answer: ACD

Explanation:

<https://docs.microsoft.com/en-us/power-automate/email-triggers> <https://docs.microsoft.com/en-us/power-automate/connection-cds>
<https://dynamics365.wordpress.com/category/powerapps/>

NEW QUESTION 132

- (Exam Topic 5)
A company is using Power Automation to automate business processes. You need to recommend triggers for Instant flows. What trigger types should you recommend? To answer, select the appropriate options in the answer area. NOTE: Each correct selection is worth one point.

Requirement	Trigger type
Run a flow when the user presses a button in a canvas app.	<div><div></div><div>PowerApps for a selected row manually trigger a flow for a selected file (OneDrive for a Business)</div></div>
Run a flow when user presses a button in the mobile Flow app.	<div><div></div><div>PowerApps for a selected row manually trigger a flow for a selected file (SharePoint)</div></div>

- A. Mastered

B. Not Mastered

Answer: A

Explanation:

Reference:

<https://docs.microsoft.com/en-us/powerapps/maker/canvas-apps/using-logic-flows> <https://www.o365dude.com/2017/07/15/flow-buttons-the-hidden-gem-of-microsoft-flow/>

NEW QUESTION 134

- (Exam Topic 5)

A company performs on-site inspections and services for air industrial equipment.

Field technicians must perform a series of maintenance checks every time they visit a customer site. Every technician performs maintenance tasks in a different order. Some technicians miss steps.

You need to ensure that all technicians perform the same steps in the same order. What should you use?

- A. Business process flow
- B. AI Builder
- C. Business rule
- D. Virtual Agent

Answer: A

Explanation:

You can help ensure that people enter data consistently and follow the same steps every time they work with a customer by creating a business process flow. For example, you might want to create a business process flow to have everyone handle customer service requests the same way, or to require that people get approval for an invoice before submitting an order. Business process flows use the same underlying technology as other processes, but the capabilities that they provide are very different from other features that use processes.

Reference:

<https://docs.microsoft.com/en-us/power-automate/business-process-flows-overview>

NEW QUESTION 139

- (Exam Topic 6)

You are creating a Power Virtual Agents chatbot for a company.

Which component types should you use for each scenario? To answer, select the appropriate options in the answer area.

NOTE: Each correct selection is worth one point.

Answer Area

Scenario	Component type
The chatbot needs to capture of the user id for authentication.	<div><div>Topic</div><div>Entity</div><div>Action</div></div>
A customer asks a question that needs to be handed off to a live Customer Support representative.	<div><div>Topic</div><div>Entity</div><div>Action</div></div>

- A. Mastered
- B. Not Mastered

Answer: A

Explanation:

Reference:

<https://docs.microsoft.com/en-us/power-virtual-agents/fundamentals-what-is-power-virtual-agents> <https://www.c-sharpcorner.com/article/get-started-with-bot-development-with-microsoft-power-virtual-agent-ste>

NEW QUESTION 142

- (Exam Topic 6)

A company uses Dynamics 365 Supply Chain Management.

When a sales order is created for one of the customers that a specific user manages, a Microsoft Outlook task must be created to remind the user to perform any follow up activities that are required.

You need to implement the functionality to create Outlook tasks. Which feature should you use?

- A. Power Automate
- B. AI Builder
- C. Power BI
- D. Business Events
- E. Common Data Service

Answer: A

NEW QUESTION 144

- (Exam Topic 6)

You need to implement Microsoft Business Applications along with the Microsoft Power Platform.

Which three Microsoft products are pan of the Power Platform? Each correct answer presents a complete solution.

NOTE: Each correct selection is worth one point.

- A. Power Apps
- B. Azure Active Directory
- C. Power Automate
- D. Azure Machine learning
- E. Power BI

Answer: ACE

NEW QUESTION 148

- (Exam Topic 6)

A company uses Microsoft 365, SharePoint Online, and Dynamics 365 Sales.

You need to recommend tools to build a solution that meets the following requirements:

- Synchronize data daily (rom an external Microsoft SQL Server instance.
- Send a report automatically to specific company executives.
- Ensure that opportunities over a specified amount are approved by a sales manager.

Which two tools of components should you recommend? Each correct answer presents pan of the solution NOTE: Each correct selection is worth one point.

- A. Microsoft Word
- B. Common Data Service
- C. Power Automate
- D. Microsoft Excel
- E. Power BI

Answer: BC

NEW QUESTION 151

- (Exam Topic 6)

You want to create a Power Apps app that allows you to define a custom Sitemap. What should you do? To answer, select the appropriate options in the answer area.

Navigate to the Power Apps portal and create

a canvas app.

a model-driven app.

a portal app.

an app by using a template.

- A. Mastered
- B. Not Mastered

Answer: A

Explanation:

Reference:

<https://docs.microsoft.com/en-us/powerapps/powerapps-overview>

NEW QUESTION 154

- (Exam Topic 6)

A company uses Microsoft 365, Power Platform, and Dynamics 365. You do not assign permissions to any licensed users.

Users are able to create and edit Power Apps canvas apps.

In which environment are users creating and editing the apps?

- A. Production
- B. Test
- C. Sandbox

Answer: B

NEW QUESTION 155

- (Exam Topic 6)

You create a Power BI dashboard.

Match each option to its requirement. To answer, drag the appropriate option from the column on the left to the correct requirement on the right. Each option may be used once, more than once, or not at all.

NOTE: Each correct match is worth one point.

Options

Share

Embed

Get Data

Pin

Answer Area

Requirement

Ensure that coworkers can see the dashboard.

Display data from Microsoft Excel in the dashboard.

Add a report tile to the dashboard.

Option

Option

Option

- A. Mastered
- B. Not Mastered

Answer: A

Explanation:

Options

Share

Embed

Get Data

Pin

Answer Area

Requirement	Option
Ensure that coworkers can see the dashboard.	<div>Share</div>
Display data from Microsoft Excel in the dashboard.	<div>Get Data</div>
Add a report tile to the dashboard.	<div>Pin</div>

NEW QUESTION 156

- (Exam Topic 6)

You are creating a Power Automate flow.
The flow must read each item in a Microsoft SharePoint list that details sales opportunities and set the value for a field named Status to Overdue if the value of a field named Follow up is less than or equal to the current date.
You need to select the appropriate component to cycle through the entire list. Which component should you use?

- A. Connector
- B. Action
- C. Trigger
- D. Condition

Answer: D

Explanation:

Reference:
<https://docs.microsoft.com/en-us/power-automate/use-expressions-in-conditions>

NEW QUESTION 158

- (Exam Topic 6)

You are creating a Power Automate approval flow.
Instructions: For each of the following statements, select Yes if the statement is true. Otherwise, select No.
NOTE: Each correct selection is worth one point.

Statements	Yes	No
The addition of an expense report to a Microsoft OneDrive folder can initiate an approval flow.	<div><input type="radio"/></div>	<div><input type="radio"/></div>
Approvals must follow a sequential order of approval.	<div><input type="radio"/></div>	<div><input type="radio"/></div>

- A. Mastered
- B. Not Mastered

Answer: A

Explanation:

Box 1: Yes
Box 2: No
Parallel approvals, integrated approvals, and unanimous approvals are also allowed. Reference:
<https://docs.microsoft.com/en-us/power-automate/modern-approvals> <https://docs.microsoft.com/en-us/power-automate/create-approval-response-options>

NEW QUESTION 162

- (Exam Topic 6)

A company is evaluating ways that they can implement AI Builder.
For which two scenarios can you use AI Builder? Each correct selection presents a complete solution. NOTE: Each correct selection is worth one point.

- A. Send emails to all ai users who subscribe to a service.
- B. Synchronize data from an external database.
- C. Collect data from several data sources and display a dashboard that shows trending data.
- D. Interpret images and perform an action on the image.
- E. Detect patterns in data and predict outcomes

Answer: BD

NEW QUESTION 163

- (Exam Topic 6)

You are building Power BI visualizations for a team.
For each of the following statements, select Yes if the statement is true. Otherwise, select No. NOTE: Each correct selection is worth one point.

Answer Area

Statement	Yes	No
Power BI can only retrieve data from up to two different sources for each dashboard.	<input type="radio"/>	<input type="radio"/>
Power BI visualizations can be used in canvas apps and model driven apps.	<input type="radio"/>	<input type="radio"/>
Power BI can display charts and list boxes on dashboards.	<input type="radio"/>	<input type="radio"/>

- A. Mastered
- B. Not Mastered

Answer: A

Explanation:
Yes
Yes Yes

NEW QUESTION 164

- (Exam Topic 6)
A company plans to use Power BI to visualize data from business systems.
For each of the following statements, select Yes if the statement is true. Otherwise, select No.
NOTE: Each correct selection is worth one point.

Statement	Yes	No
You can display data aggregates and raw data in a Power BI report.	<input type="radio"/>	<input type="radio"/>
You can display related data from multiple sources in the same Power BI report.	<input type="radio"/>	<input type="radio"/>

- A. Mastered
- B. Not Mastered

Answer: A

Explanation:

Statement	Yes	No
You can display data aggregates and raw data in a Power BI report.	<input checked="" type="radio"/>	<input type="radio"/>
You can display related data from multiple sources in the same Power BI report.	<input type="radio"/>	<input checked="" type="radio"/>

NEW QUESTION 165

- (Exam Topic 6)
A company is building apps to support their business operations. The apps will use connectors to access data from several data sources and respond to a number of events generated by components.
Which two operations can you use for connectors? Each correct answer presents part of the solution. NOTE: Each correct selection is worth one point.

- A. Triggers
- B. Plug-ins
- C. Actions
- D. Gateways

Answer: CD

NEW QUESTION 170

- (Exam Topic 6)
You have a Power BI report with a page named RevReceived. The page shows gross revenue received by your company. You want to create an almost identical page that shows net revenue instead of gross revenue.
What should you do? To answer, select the appropriate option in the answer area.

Answer Area

You should

copy the visuals from RevReceived to a new page.

duplicate the RecReceived page and update the duplicate copy.

import the RevReceived page.

modify the RevReceived page.

- A. Mastered

B. Not Mastered

Answer: A

Explanation:

Answer Area

You should

copy the visuals from RevReceived to a new page.

duplicate the RecReceived page and update the duplicate copy. **!**

import the RevReceived page.

modify the RevReceived page.

NEW QUESTION 173

- (Exam Topic 6)
User1 creates several Power BI dashboards for a company. User1 shares a dashboard with User2 who works for another company. User2 reports that she is able to view the dashboard User2 forwards the email containing the dashboard sharing link that she received to User3. User3 reports that he receives an error message when he selects the link to view the dashboard. User3 can view a dashboard that he has created. You need to determine why User 3 receives an error. What is the issue?

- A. Forwarding the email does not share the dashboard with User3.
- B. User3 is running an out-of-date version of Power BI and must upgrade to a newer version.
- C. User1 is signed in using the wrong organizational account for Power BID- User2 is signed in to the dashboard and must sign out before User3 can sign in

Answer: A

NEW QUESTION 175

.....

THANKS FOR TRYING THE DEMO OF OUR PRODUCT

Visit Our Site to Purchase the Full Set of Actual PL-900 Exam Questions With Answers.

We Also Provide Practice Exam Software That Simulates Real Exam Environment And Has Many Self-Assessment Features. Order the PL-900 Product From:

<https://www.2passeasy.com/dumps/PL-900/>

Money Back Guarantee

PL-900 Practice Exam Features:

- * PL-900 Questions and Answers Updated Frequently
- * PL-900 Practice Questions Verified by Expert Senior Certified Staff
- * PL-900 Most Realistic Questions that Guarantee you a Pass on Your FirstTry
- * PL-900 Practice Test Questions in Multiple Choice Formats and Updatesfor 1 Year