

Exam Questions NSE7_EFW-7.2

Fortinet NSE 7 - Enterprise Firewall 7.2

https://www.2passeasy.com/dumps/NSE7_EFW-7.2/



NEW QUESTION 1

Which two statements about bfd are true? (Choose two)

- A. It can support neighbor only over the next hop in BGP
- B. You can disable it at the protocol level
- C. It works for OSPF and BGP
- D. You must configure n globally only

Answer: BC

Explanation:

BFD (Bidirectional Forwarding Detection) is a protocol that can quickly detect failures in the forwarding path between two adjacent devices. You can disable BFD at the protocol level by using the “set bfd disable” command under the OSPF or BGP configuration. BFD works for both OSPF and BGP protocols, as well as static routes and SD-WAN rules. References := BFD | FortiGate / FortiOS 7.2.0 - Fortinet Document Library, section “BFD”.

NEW QUESTION 2

Refer to the exhibit, which shows a custom signature.



Which two modifications must you apply to the configuration of this custom signature so that you can save it on FortiGate? (Choose two.)

- A. Add severity.
- B. Add attack_id.
- C. Ensure that the header syntax is F-SBID.
- D. Start options with --.

Answer: AB

Explanation:

For a custom signature to be valid and savable on a FortiGate device, it must include certain mandatory fields. Severity is used to specify the level of threat that the signature represents, and attack_id is a unique identifier for the signature. Without these, the signature would not be complete and could not be correctly utilized by the FortiGate's Intrusion Prevention System (IPS).

NEW QUESTION 3

Which two statements about the neighbor-group command are true? (Choose two.)

- A. You can configure it on the GUI.
- B. It applies common settings in an OSPF area.
- C. It is combined with the neighbor-range parameter.
- D. You can apply it in Internal BGP (IBGP) and External BGP (EBGP).

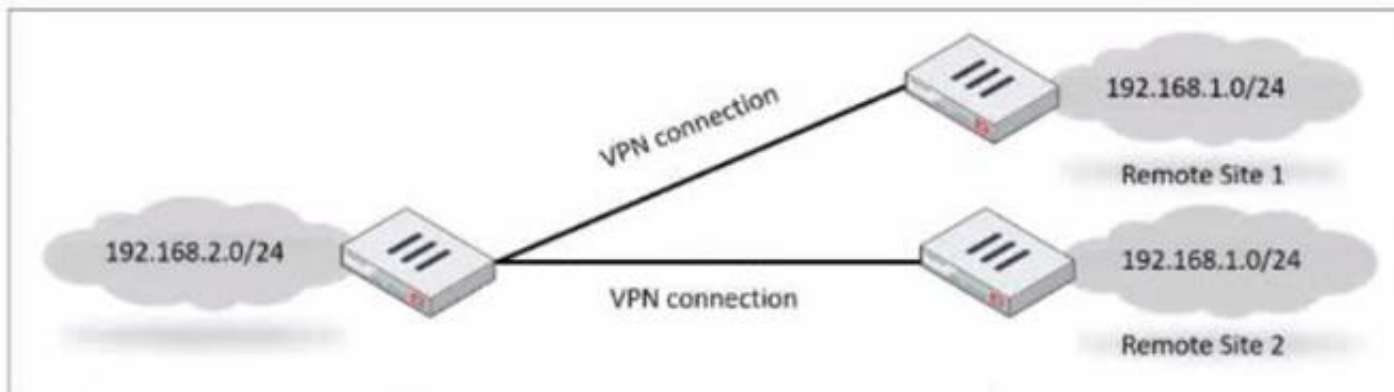
Answer: BD

Explanation:

The neighbor-group command in FortiOS allows for the application of common settings to a group of neighbors in OSPF, and can also be used to simplify configuration by applying common settings to both IBGP and EBGP neighbors. This grouping functionality is a part of the FortiOS CLI and is documented in the Fortinet CLI reference.

NEW QUESTION 4

Refer to the exhibit, which shows a network diagram.



Which IPsec phase 2 configuration should you implement so that only one remote site is connected at any time?

- A. Set route-overlap to allow.
- B. Set single-source to enable
- C. Set route-overlap to either use—new or use-old
- D. Set net-device to enable

Answer: C

Explanation:

To ensure that only one remote site is connected at any given time in an IPsec VPN scenario, you should use route-overlap with the option to either use new or use old. This setting dictates which routes are preferred and how overlaps in routes are handled, allowing for one connection to take precedence over the other (C).

References:

? FortiOS Handbook - IPsec VPN

NEW QUESTION 5

Refer to the exhibit, which contains information about an IPsec VPN tunnel.

```
FortiGate # diag vpn tunnel list
list all ipsec tunnel in vd 0
-----
name=tunnel_0 ver=2 serial=1 100.64.3.1:0->100.64.1.1:0 tun_id=100.64.1.1 tun_id6=:100.64.1.1
bound_if=3 lgwy=static/1 tun=intf mode=auto/1 encap=none/552 options[0228]=npu frag-rfc run_s
proxyid_num=1 child_num=0 refcnt=3 ilast=42949917 olast=42949917 ad=/0
stat: rxp=0 txp=0 rxb=0 txb=0
dpd: mode=off on=0 idle=20000ms retry=3 count=0 seqno=0
natt: mode=none draft=0 interval=0 remote_port=0
fec: egress=0 ingress=0
proxyid=tunnel_0_0 proto=0 sa=1 ref=2 serial=1
src: 0:0.0.0.0-255.255.255.255:0
dst: 0:0.0.0.0-255.255.255.255:0
SA: ref=3 options=30202 type=00 soft=0 mtu=1280 expire=1454/0B replaywin=2048
seqno=1 esn=0 replaywin_lastseq=00000000 qat=192 rekey=0 hash_search_len=1
life: type=01 bytes=0/0 timeout=1768/1800
dec: spi=877d6590 esp=aes key=16 be308ec1fb05464205764424bc40a76d
ah=sha256 key=32 cc8894be3390983521a48b2e7a5c998e6b28a10a3ddd8e7bc7ecbe672dfe7cc5
enc: spi=63d0f38a esp=aes key=16 d8d3343af2fed4ddd958a022cd656b06
ah=sha256 key=32 264402ba8ad04a7e97732b52ec27c92ff86e0a97bb33e22887677336f1670c7d
dec:pkts/bytes=0/0, enc:pkts/bytes=0/0
npu_flag=00 npu_rgwy=100.64.1.1 npu_lgwy=100.64.3.1 npu_selid=0 dec_npuid=0 enc_npuid=0
run_tally=0
```

What two conclusions can you draw from the command output? (Choose two.)

- A. Dead peer detection is set to enable.
- B. The IKE version is 2.
- C. Both IPsec SAs are loaded on the kernel.
- D. Forward error correction in phase 2 is set to enable.

Answer: BC

Explanation:

From the command output shown in the exhibit:

* B. The IKE version is 2: This can be deduced from the presence of 'ver=2' in the output, which indicates that IKEv2 is being used.

* C. Both IPsec SAs are loaded on the kernel: This is indicated by the line 'npu flags=0x0/0', suggesting that no offload to NPU is occurring, and hence, both Security Associations are loaded onto the kernel for processing.

Fortinet documentation specifies that the version of IKE (Internet Key Exchange) used and the loading of IPsec Security Associations can be verified through the diagnostic commands related to VPN tunnels.

NEW QUESTION 6

You want to block access to the website ww.eicar.org using a custom IPS signature. Which custom IPS signature should you configure?

- A)
F-SBID(--name "eicar"; --protocol udp; --flow from_server; --pattern "eicar"; --context host;)
- B)
F-SBID(--name "detect_eicar"; --protocol udp; --service ssl; --flow from_client; --pattern "www.eicar.org"; --no_case; --context host;)
- C)
F-SBID(--name "detect_eicar"; --protocol tcp; --service dns; --flow from_server; --pattern "eicar"; --no_case;)
- D)
F-SBID(--name "eicar"; --protocol tcp; --service HTTP; --flow from_client; --pattern "www.eicar.org"; --no_case; --context host;)

- A. Option A
- B. Option B
- C. Option C
- D. Option D

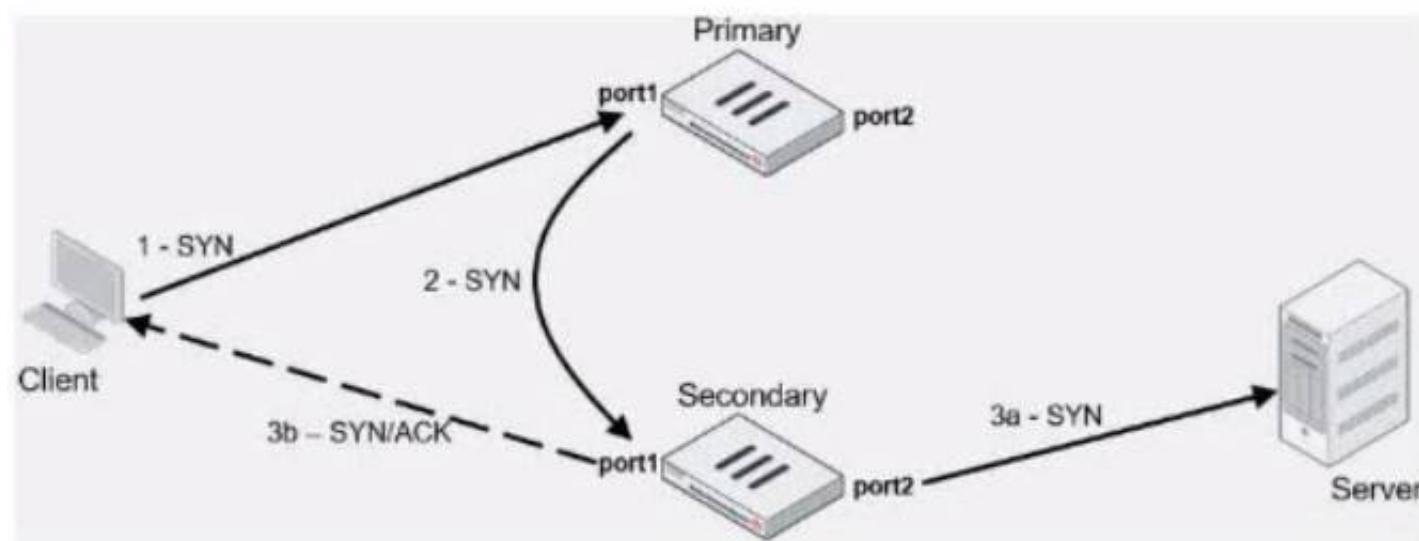
Answer: D

Explanation:

Option D is the correct answer because it specifically blocks access to the website "www.eicar.org" using TCP protocol and HTTP service, which are commonly used for web browsing. The other options either use the wrong protocol (UDP), the wrong service (DNS or SSL), or the wrong pattern ("eicar" instead of "www.eicar.org"). References := Configuring custom signatures | FortiGate / FortiOS 7.4.0 - Fortinet Document Library, section "Signature to block access to example.com".

NEW QUESTION 7

Exhibit.



Refer to the exhibit, which contains an active-active load balancing scenario.

During the traffic flow the primary FortiGate forwards the SYN packet to the secondary FortiGate.

What is the destination MAC address or addresses when packets are forwarded from the primary FortiGate to the secondary FortiGate?

- A. Secondary physical MAC port1
- B. Secondary virtual MAC port1
- C. Secondary virtual MAC port1 then physical MAC port1
- D. Secondary physical MAC port2 then virtual MAC port2

Answer: A

Explanation:

In an active-active load balancing scenario, when the primary FortiGate forwards the SYN packet to the secondary FortiGate, the destination MAC address would be the secondary's physical MAC on port1, as the packet is being sent over the network and the physical MAC is used for layer 2 transmissions.

NEW QUESTION 8

Which two statements about IKE version 2 fragmentation are true? (Choose two.)

- A. Only some IKE version 2 packets are considered fragmentable.
- B. The reassembly timeout default value is 30 seconds.
- C. It is performed at the IP layer.
- D. The maximum number of IKE version 2 fragments is 128.

Answer: AD

Explanation:

In IKE version 2, not all packets are fragmentable. Only certain messages within the IKE negotiation process can be fragmented. Additionally, there is a limit to the number of fragments that IKE version 2 can handle, which is 128. This is specified in the Fortinet documentation and ensures that the IKE negotiation process can proceed even in networks that have issues with large packets. The reassembly timeout and the layer at which fragmentation occurs are not specified in this context within Fortinet documentation.

NEW QUESTION 9

You want to configure faster failure detection for BGP

Which parameter should you enable on both connected FortiGate devices?

- A. Ebgp-enforce-multihop
- B. bfd
- C. Distribute-list-in
- D. Graceful-restart

Answer: B

Explanation:

BFD (Bidirectional Forwarding Detection) is a protocol that provides fast failure detection for BGP by sending periodic messages to verify the connectivity between two peers¹. BFD can be enabled on both connected FortiGate devices by using the command `set bfd enable` under the BGP configuration². References: =

Technical Tip :

FortiGate BFD implementation and examples ..., Configure BGP | FortiGate / FortiOS 7.0.2

- Fortinet Documentation

NEW QUESTION 10

Which two statements about ADVPN are true? (Choose two.)

- A. You must disable add-route in the hub.
- B. All FortiGate devices must be in the same autonomous system (AS).
- C. The hub adds routes based on IKE negotiations.
- D. You must configure phase 2 quick mode selectors to 0.0.0.0 0.0.0.0.

Answer: CD

Explanation:

C. The hub adds routes based on IKE negotiations: This is part of the ADVPN functionality where the hub learns about the networks behind the spokes and can

add routes dynamically based on the IKE negotiations with the spokes.

* D. You must configure phase 2 quick mode selectors to 0.0.0.0 0.0.0.0: This wildcard

setting in the phase 2 selectors allows any-to-any tunnel establishment, which is necessary for the dynamic creation of spoke-to-spoke tunnels.

These configurations are outlined in Fortinet's documentation for setting up ADVPN, where the hub's role in route control and the use of wildcard selectors for phase 2 are emphasized to enable dynamic tunneling between spokes.

NEW QUESTION 10

Refer to the exhibit, which shows config system central-management information.

```
config system central-management
  set type fortimanager
  set allow-push-firmware disable
  set allow-remote-firmware-upgrade disable
  set fmg "10.1.0.241"
  config server-list
    edit 1
      set server-type update
      set server-address 10.1.0.241
    next
  end
  set include-default-servers disable
end
```

Which setting must you configure for the web filtering feature to function?

- A. Add serve
- B. fortiguar
- C. net to the server list.
- D. Configure securewf.fortiguar
- E. net on the default servers.
- F. Set update-server-location to automatic.
- G. Configure server-type with the rating option.

Answer: D

Explanation:

For the web filtering feature to function effectively, the FortiGate device needs to have a server configured for rating services. The rating option in the server-type setting specifies that the server is used for URL rating lookup, which is essential for web filtering. The displayed configuration does not list any FortiGuard web filtering servers, which would be necessary for web filtering. The setting set include-default-servers disable indicates that the default FortiGuard servers are not being used, and hence, a specific server for web filtering (like securewf.fortiguard.net) needs to be configured.

NEW QUESTION 11

Exhibit.

Edit Policy

Name ⓘ

Internet_Access

Policy Mode ⓘ

Standard Learn Mode

Incoming Interface

port3

Outgoing Interface

port1

Source

all

Destination

all

Schedule

always

Service

App Default Specify

Application

DNS
FTP
LinkedIn

URL Category

Action

ACCEPT DENY

Firewall/Network Options

Protocol Options

default

Security Profiles

Refer to the exhibit, which contains a partial policy configuration. Which setting must you configure to allow SSH?

- A. Specify SSH in the Service field
- B. Configure port 22 in the Protocol Options field.
- C. Include SSH in the Application field
- D. Select an application control profile corresponding to SSH in the Security Profiles section

Answer: A

Explanation:

? Option A is correct because to allow SSH, you need to specify SSH in the Service field of the policy configuration. This is because the Service field determines which types of traffic are allowed by the policy¹. By default, the Service field is set to App Default, which means that the policy will use the default ports defined by the applications. However, SSH is not one of the default applications, so you need to specify it manually or create a custom service for it².

? Option B is incorrect because configuring port 22 in the Protocol Options field is not enough to allow SSH. The Protocol Options field allows you to customize the protocol inspection and anomaly protection settings for the policy³. However, this field does not override the Service field, which still needs to match the traffic type.

? Option C is incorrect because including SSH in the Application field is not enough to allow SSH. The Application field allows you to filter the traffic based on the application signatures and categories⁴. However, this field does not override the Service field, which still needs to match the traffic type.

? Option D is incorrect because selecting an application control profile corresponding to SSH in the Security Profiles section is not enough to allow SSH. The Security Profiles section allows you to apply various security features to the traffic, such as antivirus, web filtering, IPS, etc. However, this section does not override the Service field, which still needs to match the traffic type. References: =

? 1: Firewall policies

? 2: Services

? 3: Protocol options profiles

? 4: Application control

NEW QUESTION 13

In which two ways does fortiManager function when it is deployed as a local FDS? (Choose two)

- A. It can be configured as an update server a rating server or both
- B. It provides VM license validation services
- C. It supports rating requests from non-FortiGate devices.
- D. It caches available firmware updates for unmanaged devices

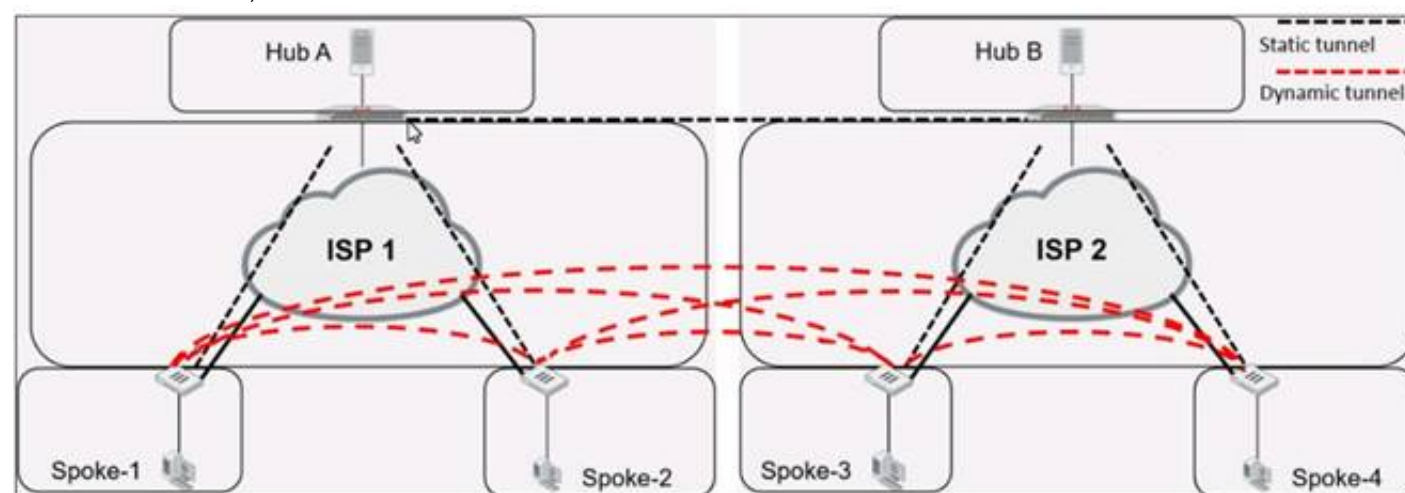
Answer: AB

Explanation:

When deployed as a local FortiGuard Distribution Server (FDS), FortiManager functions in several capacities. It can act as an update server, a rating server, or both, providing firmware updates and FortiGuard database updates. Additionally, it plays a crucial role in VM license validation services, ensuring that the connected FortiGate devices are operating with valid licenses. However, it does not support rating requests from non-FortiGate devices nor cache firmware updates for unmanaged devices. Fortinet FortiOS Handbook: FortiManager as a Local FDS Configuration

NEW QUESTION 16

Refer to the exhibit, which shows an ADVPN network.



Which VPN phase 1 parameters must you configure on the hub for the ADVPN feature to function? (Choose two.)

- A. set auto-discovery-forwarder enable
- B. set add-route enable
- C. set auto-discovery-receiver enable
- D. set auto-discovery-sender enable

Answer: AC

Explanation:

For the ADVPN feature to function properly on the hub, the following phase 1 parameters must be configured:

- * A. set auto-discovery-forwarder enable: This enables the hub to forward shortcut information to the spokes, which is essential for them to establish direct tunnels.
- * C. set auto-discovery-receiver enable: This allows the hub to receive shortcut offers from the spokes.

This information is corroborated by the Fortinet documentation, which explains that in an ADVPN setup, the hub must be able to both forward and receive shortcut information for dynamic tunnel creation between spokes.

NEW QUESTION 21

Exhibit.

Script Name	Static Route
Comments	
Type	CLI Script
Run script on	Remote FortiGate Directly (...)
Script details	<pre># conf rout stat # edit 0 # set gateway 10.20.121.2 # set priority 20 # set device "wan1" # next # end</pre>

Refer to the exhibit, which contains a CLI script configuration on FortiManager. An administrator configured the CLI script on FortiManager but the script failed to apply any changes to the managed

device after being executed.

What are two reasons why the script did not make any changes to the managed device? (Choose two)

- A. The commands that start with the # sign did not run.
- B. Incomplete commands can cause CLI scripts to fail.
- C. Static routes can be added using only TCI scripts.
- D. CLI scripts must start with #!.

Answer: AB

Explanation:

The commands that start with the # sign did not run because they are treated as comments in the CLI script. Incomplete commands can cause CLI scripts to fail because they are not recognized by the FortiGate device. The other options are incorrect because static routes can be added using CLI or GUI, and CLI scripts do not need to start with #!. References := Configuring custom scripts | FortiManager 7.2.0 - Fortinet Documentation, section “CLI script syntax”.

NEW QUESTION 22

You configured an address object on the tool FortiGate in a Security Fabric. This object is not synchronized with a downstream device. Which two reasons could be the cause? (Choose two)

- A. The address object on the tool FortiGate has fabric-object set to disable
- B. The root FortiGate has configuration-sync set to enable
- C. The downstream FortiGate has fabric-object-unification set to local
- D. The downstream FortiGate has configuration-sync set to local

Answer: AC

Explanation:

? Option A is correct because the address object on the tool FortiGate will not be synchronized with the downstream devices if it has fabric-object set to disable. This option controls whether the address object is shared with other FortiGate devices in the Security Fabric or not¹.

? Option C is correct because the downstream FortiGate will not receive the address object from the tool FortiGate if it has fabric-object-unification set to local. This option controls whether the downstream FortiGate uses the address objects from the root FortiGate or its own local address objects².

? Option B is incorrect because the root FortiGate has configuration-sync set to enable by default, which means that it will synchronize the address objects with the downstream devices unless they are disabled by the fabric-object option³.

? Option D is incorrect because the downstream FortiGate has configuration-sync set to local by default, which means that it will receive the address objects from the root FortiGate unless they are overridden by the fabric-object-unification

option⁴. References: =

? 1: Group address objects synchronized from FortiManager⁵

? 2: Security Fabric address object unification⁶

? 3: Configuration synchronization⁷

? 4: Configuration synchronization⁷

? : Security Fabric - Fortinet Documentation

NEW QUESTION 23

You want to improve reliability over a lossy IPSec tunnel.

Which combination of IPSec phase 1 parameters should you configure?

- A. fec-ingress and fec-egress
- B. Odpd and dpd-retryinterval
- C. fragmentation and fragmentation-mtu
- D. keepalive and keylive

Answer: C

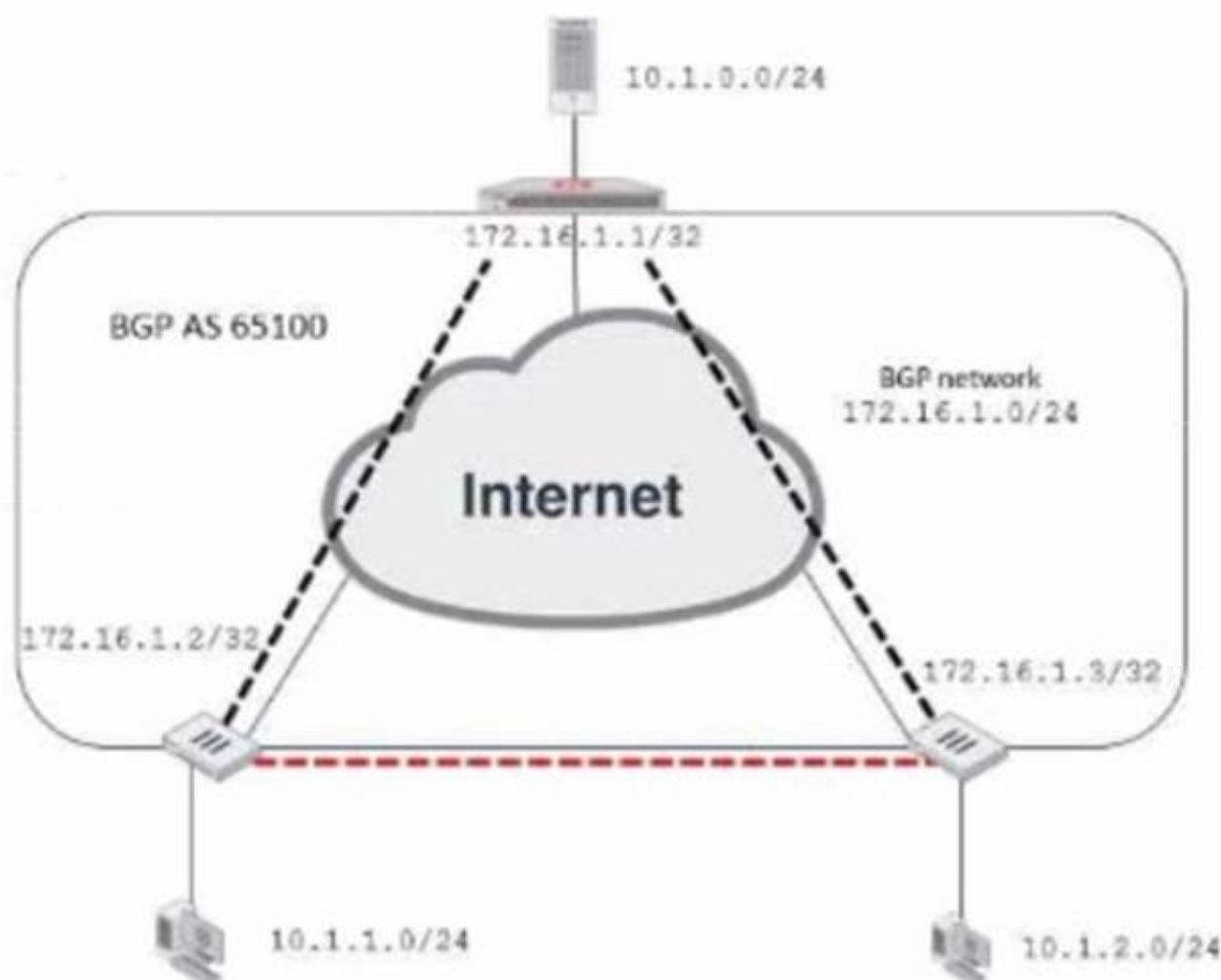
Explanation:

For improving reliability over a lossy IPSec tunnel, the fragmentation and fragmentation-mtu parameters should be configured. In scenarios where there might be issues with packet size or an unreliable network, setting the IPSec phase 1 to allow for fragmentation will enable large packets to be broken down, preventing them from being dropped due to size or poor network quality. The fragmentation-mtu specifies the size of the fragments. This is aligned with Fortinet's recommendations for handling IPSec VPN over networks with potential packet loss or size limitations.

NEW QUESTION 24

Exhibit.

Network diagram



Partial BGP configuration

```
Hub # show router bgp
config router bgp
  set as 65100
  set router-id 172.16.1.1
  config neighbor-group
    edit "advpn"
      set remote-as 65100
    ...
  next
end
....
end
```

Refer to the exhibit, which contains an ADVPN network diagram and a partial BGP configuration. Which two parameters should you configure in config neighbor range? (Choose two.)

- A. set prefix 172.16.1.0 255.255.255.0
- B. set route-reflector-client enable
- C. set neighbor-group advpn
- D. set prefix 10.1.0 255.255.255.0

Answer: AC

Explanation:

In the ADVPN configuration for BGP, you should specify the prefix that the neighbors can advertise. Option A is correct as you would configure the BGP network prefix that should be advertised to the neighbors, which matches the BGP network in the diagram. Option C is also correct since you should reference the neighbor group configured for the ADVPN setup within the BGP configuration.

NEW QUESTION 29

.....

THANKS FOR TRYING THE DEMO OF OUR PRODUCT

Visit Our Site to Purchase the Full Set of Actual NSE7_EFW-7.2 Exam Questions With Answers.

We Also Provide Practice Exam Software That Simulates Real Exam Environment And Has Many Self-Assessment Features. Order the NSE7_EFW-7.2 Product From:

https://www.2passeasy.com/dumps/NSE7_EFW-7.2/

Money Back Guarantee

NSE7_EFW-7.2 Practice Exam Features:

- * NSE7_EFW-7.2 Questions and Answers Updated Frequently
- * NSE7_EFW-7.2 Practice Questions Verified by Expert Senior Certified Staff
- * NSE7_EFW-7.2 Most Realistic Questions that Guarantee you a Pass on Your FirstTry
- * NSE7_EFW-7.2 Practice Test Questions in Multiple Choice Formats and Updatesfor 1 Year