

Snowflake

Exam Questions SnowPro-Core

SnowPro Core Certification Exam



NEW QUESTION 1

- (Exam Topic 1)

Which of the following statements would be used to export/unload data from Snowflake?

- A. COPY INTO @stage
- B. EXPORT TO @stage
- C. INSERT INTO @stage
- D. EXPORT_TO_STAGE(stage = > @Wage, select = > 'select * from t1);

Answer: A

Explanation:

Reference: <https://docs.snowflake.com/en/user-guide/data-unload-considerations.html>

NEW QUESTION 2

- (Exam Topic 1)

Which interfaces can be used to create and/or manage Virtual Warehouses?

- A. The Snowflake Web Interface (UI)
- B. SQL commands
- C. Data integration tools
- D. All of the above

Answer: D

Explanation:

Reference: <https://docs.snowflake.com/en/user-guide/warehouses.html>

NEW QUESTION 3

- (Exam Topic 1)

True or False: A third-party tool that supports standard JDBC or ODBC but has no Snowflake-specific driver will be unable to connect to Snowflake.

- A. True
- B. False

Answer: B

Explanation:

<https://docs.snowflake.com/en/user-guide/jdbc.html>

Snowflake provides a JDBC type 4 driver that supports core JDBC functionality. The JDBC driver must be installed in a 64-bit environment and requires Java 1.8 (or higher). The driver can be used with most client tools/applications that support JDBC for connecting to a database server.

NEW QUESTION 4

- (Exam Topic 1)

Select the three types of tables that exist within Snowflake. Choose 3 answers

- A. Temporary
- B. Transient
- C. Provisioned
- D. Permanent

Answer: ABD

Explanation:

Reference: <https://community.snowflake.com/s/article/Making-Transient-table-by-Default>

NEW QUESTION 5

- (Exam Topic 1)

True or False: Snowflake charges a premium for storing semi-structured data.

- A. True
- B. False

Answer: B

Explanation:

Reference:

<https://snowflakecommunity.force.com/s/question/0D50Z00008ckwNuSAI/does-snowflakecharges- premium-for-storing-semi-structured-data>

NEW QUESTION 6

- (Exam Topic 1)

Which of the following statements is true of Snowflake micro-partitioning?

- A. Micro-partitioning has been known to introduce data skew
- B. Micro-partitioning: requires a partitioning schema to be defined up front

- C. Micro-partitioning is transparently completed using the ordering that occurs when the data is inserted/loaded
- D. Micro-partitioning can be disabled within a Snowflake account

Answer: C

Explanation:

Reference: <https://docs.snowflake.com/en/user-guide/tables-clustering-micropartitions.html>

NEW QUESTION 7

- (Exam Topic 1)

What services does Snowflake automatically provide for customer that they may have been responsible for with their on premise system? Select all the below that apply.

- A. Installing and configuring hardware
- B. Patching software
- C. Physical security
- D. Maintaining metadata and statistics

Answer: ABD

NEW QUESTION 8

- (Exam Topic 1)

True or False: When active, a pipe requires a dedicated Virtual Warehouse to execute.

- A. True
- B. False

Answer: B

NEW QUESTION 9

- (Exam Topic 1)

Which of the following accurately represents how a table fits into Snowflake's logical container hierarchy? Select one.

- A. Account -> Schema -> Database -> Table
- B. Account -> Database -> Schema -> Table
- C. Database -> Schema -> Table -> Account
- D. Database -> Table -> Schema -> Account

Answer: B

Explanation:

Reference: <https://docs.snowflake.com/en/sql-reference/ddl-database.html>

NEW QUESTION 10

- (Exam Topic 1)

Data storage for individual tables can be monitored using which commands and/or object(s)? Choose 2 answers

- A. SHOW TABLES;
- B. SHOW STORAGE BY TABLE;
- C. Information Schema -> TABLE_STORAGE_METRICS
- D. Information Schema -> TABLE_HISTORY

Answer: AC

NEW QUESTION 10

- (Exam Topic 1)

Which of the following best describes where Snowflake's metadata is stored?

- A. Within the data files
- B. Inside the Virtual Warehouses
- C. In the Cloud Services Layer
- D. within the drivers

Answer: C

NEW QUESTION 15

- (Exam Topic 1)

A deterministic query is run at 8am, takes 5 minutes, and the results are cached. Which of the following statements are true?

Choose 2 answers

- A. The exact query will ALWAYS return the precomputed result set for the RESULT_CACHE_ACTIVE = time period
- B. The same exact query will return the precomputed results if the underlying data hasn't changed and the results were last accessed within the previous 24 hour period
- C. The same exact query will return the precomputed results even if the underlying data has changed as long as the results were last accessed within the previous 24 hour period
- D. The "24 hour" on the precomputed results gets renewed every time the exact query is executed

Answer: BD

Explanation:

The results cache will only be used if it's the same query AND the same role executing the query

NEW QUESTION 17

- (Exam Topic 1)

True or False: Micro-partition metadata enables some operations to be completed without requiring Compute.

- A. True
- B. False

Answer: A

Explanation:

Reference: <https://blog.ippon.tech/innovative-snowflake-features-caching/>

NEW QUESTION 19

- (Exam Topic 1)

Which of the following connectors allow Multi-Factor Authentication (MFA) authorization when connecting? (Choose all that apply.)

- A. JDBC
- B. SnowSQL
- C. Snowflake Web Interface (UI)
- D. ODBC
- E. PythonD18912E1457D5D1DDCBD40AB3BF70D5D

Answer: ABCDE

Explanation:

Reference: <https://docs.snowflake.com/en/user-guide/security-mfa.html>

NEW QUESTION 21

- (Exam Topic 1)

The Query History in the Snowflake Web Interface (UI) is kept for approximately:

- A. 60 minutes
- B. 24 hours
- C. 14 days
- D. 30 days
- E. 1 year

Answer: C

Explanation:

Reference: https://docs.snowflake.com/en/sql-reference/account-usage/query_history.html

NEW QUESTION 23

- (Exam Topic 1)

Credit Consumption by the Compute Layer (Virtual Warehouses) is based on: (Choose two.)

- A. Number of users
- B. Warehouse size
- C. Amount of data processed
- D. # of clusters for the Warehouse

Answer: BD

Explanation:

<https://docs.snowflake.com/en/user-guide/credits.html#virtual-warehouse-credit-usage> "Snowflake credits are charged based on the number of virtual warehouses you use, how long they run, and their size."

NEW QUESTION 26

- (Exam Topic 1)

True or False: All Snowflake table types include fail-safe storage.

- A. True
- B. False

Answer: B

NEW QUESTION 29

- (Exam Topic 1)

True or False: A single database can exist in more than one Snowflake account.

- A. True

B. False

Answer: B

Explanation:

Reference: <https://docs.snowflake.com/en/sql-reference/ddl-database.html>

NEW QUESTION 32

- (Exam Topic 1)

When loading data into Snowflake, the COPY command supports: Choose 2 answers

- A. Joins
- B. Fitters
- C. Data type conversions
- D. Column reordering
- E. Aggregates

Answer: CD

NEW QUESTION 37

- (Exam Topic 1)

Which of the following statements are true of Snowflake data loading? Choose 3 answers

- A. VARIANT "nut" values are not the same as SQL Null values
- B. It is recommended to do frequent, single row DMLS
- C. It is recommended to validate the data before loading into the Snowflake target table
- D. It is recommended to use staging tables to manage MERGE statements

Answer: ACD

NEW QUESTION 38

- (Exam Topic 1)

Which of the following statements are true of VALIDATION_MODE in Snowflake? (Choose two.)

- A. The validation_mode option is used when creating an Internal Stage
- B. validation_mode=return_all_errors is a parameter of the copy command
- C. The validation_mode option will validate data to be loaded by the copy statement while completing the load and will return the rows that could not be loaded without error
- D. The validation_mode option will validate data to be loaded by the copy statement without completing the load and will return possible errors

Answer: BD

Explanation:

Reference: <https://docs.snowflake.com/en/user-guide/data-load-bulk-ts.html>

NEW QUESTION 39

- (Exam Topic 1)

Which of the following DML commands isn't supported by Snowflake?

- A. UPSERT
- B. MERGE
- C. UPDATE
- D. TRUNCATE TABLE

Answer: A

Explanation:

Reference: <https://docs.snowflake.com/en/sql-reference/sql-dml.html>

NEW QUESTION 40

- (Exam Topic 1)

True or False: AWS Private Link provides a secure connection from the Customer's on-premise data center to the Snowflake.

- A. True
- B. False

Answer: B

Explanation:

Reference: <https://docs.snowflake.com/en/user-guide/admin-security-privatelink.html>

NEW QUESTION 42

- (Exam Topic 1)

True or False: During data unloading, only JSON and CSV files can be compressed.

- A. True

B. False

Answer: B

Explanation:

Reference: <https://docs.snowflake.com/en/sql-reference/sql/create-file-format.html>

NEW QUESTION 43

- (Exam Topic 1)

How a Snowpipe charges calculated?

- A. Per-second/per Warehouse size
- B. Per-second/per-core granularity
- C. Number of Pipes in account
- D. Total storage bucket size

Answer: B

Explanation:

Reference: <https://docs.snowflake.com/en/user-guide/data-load-snowpipe-billing.html>

NEW QUESTION 47

- (Exam Topic 1)

True or False: Data in Fail-safe can be deleted by a user or the Snowflake team before it expires.

- A. True
- B. False

Answer: B

Explanation:

Reference: <https://blog.knoldus.com/ksnow-time-travel-and-fail-safe-in-snowflake/>

NEW QUESTION 51

- (Exam Topic 1)

Which of the following statements are true about Schemas in Snowflake? (Choose two.)

- A. A Schema may contain one or more Databases
- B. A Database may contain one or more Schemas
- C. A Schema is a logical grouping of Database Objects
- D. Each Schema is contained within a Warehouse

Answer: BC

Explanation:

Reference: <https://docs.snowflake.com/en/user-guide/data-sharing-multiple-db.html>

NEW QUESTION 54

- (Exam Topic 1)

Which of the following are valid Snowflake Virtual Warehouse Scaling Policies? (Choose two.)

- A. Custom
- B. Economy
- C. Optimized
- D. Standard

Answer: BD

Explanation:

Reference: <https://community.snowflake.com/s/article/Snowflake-Visualizing-Warehouse-Performance>

NEW QUESTION 56

- (Exam Topic 1)

What privileges are required to create a task?

- A. The global privilege create task is required to create a new task.
- B. Tasks are created at the Application level and can only be created by the Account Admin role.
- C. Many Snowflake DDLs are metadata operations only, and create task DDL can be executed without virtual warehouse requirement or task specific grants.
- D. The role must have access to the target schema and the create task privilege on the schema itself.

Answer: D

Explanation:

All tasks in a simple tree must have the same task owner (i.e. a single role must have the OWNERSHIP privilege on all of the tasks in the tree). All tasks in a simple tree must exist in the same schema.

<https://docs.snowflake.com/en/user-guide/tasks-intro.html#creating-tasks>

NEW QUESTION 60

- (Exam Topic 1)

Which of the following are best practices for users with the SYSADMIN/ACCOUNTADMIN roles? Choose 3 answers

- A. Their default role should be set to SYSTEMADMIN (the lower of the two)
- B. They should not set up multi_Factor Authentication (MFA)—as administrator they may need to change the MFA settings and those enrolled in MFA are unable to do so
- C. They should only access and 'step into' the ACCOUNTADMIN role temporarily, as needed to complete a specific operation
- D. They should ensure all database objects in the account are owned by the ACCOUNTADMIN role
- E. They should use the SYSADMIN role to perform administrative work on database objects

Answer: ACE

NEW QUESTION 62

- (Exam Topic 1)

True or False: Users are able to see the result sets of queries executed by other users that share their same role.

- A. True
- B. False

Answer: B

Explanation:

Reference: <https://docs.snowflake.com/en/user-guide/security-access-control-considerations.html>

NEW QUESTION 67

- (Exam Topic 1)

True or False: An active warehouse is required to run a COPY INTO statement.

- A. True
- B. False

Answer: A

NEW QUESTION 70

- (Exam Topic 1)

Which of the following are common use cases for zero-copy cloning? Choose 3 answers

- A. Quick provisioning of Dev and Test/QA environments
- B. Data backups
- C. Point in time snapshots
- D. Performance optimization

Answer: ABC

Explanation:

Reference: <https://community.snowflake.com/s/question/0D50Z00009C3VIMSAV/zero-copy-cloning>

NEW QUESTION 71

- (Exam Topic 1)

True or False: When data share is established between a Data Provider and a data Consumer, the Data Consumer can extend that data share to other Data Consumers.

- A. True
- B. False

Answer: B

Explanation:

Reference: <https://docs.snowflake.com/en/user-guide/data-sharing-intro.html>

NEW QUESTION 76

- (Exam Topic 1)

What is the minimum Snowflake edition that provides data sharing?

- A. Standard
- B. Premier
- C. Enterprise
- D. Business Critical Edition

Answer: A

Explanation:

Reference: <https://docs.snowflake.com/en/user-guide/intro-editions.html#data-sharing>

NEW QUESTION 81

- (Exam Topic 1)

As a best practice, clustering keys should only be defined on tables of which minimum size?

- A. Multi-Kilobyte (KB) Range
- B. Multi-Megabyte (MB) Range
- C. Multi-Gigabyte (GB) Range
- D. Multi-Terabyte (TB) Range

Answer: D

Explanation:

Reference: <https://docs.snowflake.com/en/user-guide/tables-clustering-keys.html>

NEW QUESTION 82

- (Exam Topic 1)

If a Small Warehouse is made up of 2 servers/cluster, how many servers/cluster make up a Medium Warehouse?

- A. 4
- B. 16
- C. 32
- D. 128

Answer: A

Explanation:

Reference: <https://docs.snowflake.com/en/user-guide/warehouses-overview.html>

NEW QUESTION 83

- (Exam Topic 1)

Which is true of Snowflake network policies? A Snowflake network policy: (Choose two.)

- A. Is available to all Snowflake Editions
- B. Is only available to customers with Business Critical Edition
- C. Restricts or enables access to specific IP addresses
- D. Is activated using an “ALTER DATABASE” command

Answer: AC

Explanation:

Reference: <https://docs.snowflake.com/en/sql-reference/sql/create-network-policy.html>

NEW QUESTION 88

- (Exam Topic 1)

True or False: It is possible to load data into Snowflake without creating a named File Format object.

- A. True
- B. False

Answer: A

Explanation:

Reference: <https://docs.snowflake.com/en/user-guide/data-load-external-tutorial-create-file-format.html>

NEW QUESTION 91

- (Exam Topic 1)

The PUT command: (Choose two.)

- A. Automatically creates a File Format object
- B. Automatically uses the last Stage created
- C. Automatically compresses files using Gzip
- D. Automatically encrypts files

Answer: CD

Explanation:

Reference: <https://docs.snowflake.com/en/sql-reference/sql/put.html>

NEW QUESTION 95

- (Exam Topic 1)

When scaling out by adding clusters to a multi-cluster warehouse, you are primarily scaling for improved:

- A. Concurrency
- B. Performance

Answer: A

Explanation:

Reference: <https://docs.snowflake.com/en/user-guide/warehouses-multiclust.html>

NEW QUESTION 96

- (Exam Topic 1)

What is the recommended Snowflake data type to store semi-structured data like JSON?

- A. VARCHAR
- B. RAW
- C. LOB
- D. VARIANT

Answer: D

Explanation:

Reference: <https://docs.snowflake.com/en/sql-reference/data-types-semistructured.html>

NEW QUESTION 100

- (Exam Topic 1)

Select the different types of Internal Stages: (Choose three.)

- A. Named Stage
- B. User Stage
- C. Table Stage
- D. Schema Stage

Answer: ABC

Explanation:

Reference: <https://dwgeek.com/type-of-snowflake-stages-how-to-create-and-use.html/#Snowflake-Internal- Named-Stage>

NEW QUESTION 102

- (Exam Topic 1)

True or False: Bulk unloading of data from Snowflake supports the use of a SELECT statement.

- A. True
- B. False

Answer: A

Explanation:

Reference: <https://docs.snowflake.com/en/user-guide-data-unload.html>

NEW QUESTION 106

- (Exam Topic 1)

True or False: Snowflake allows its customers to directly access the micro-partition files that make up its tables.

- A. True
- B. False

Answer: B

NEW QUESTION 109

- (Exam Topic 1)

A Virtual Warehouse's auto-suspend and auto-resume settings apply to:

- A. The primary duster in the virtual warehouse
- B. The entire Virtual Warehouse
- C. The database the Virtual Warehouse resides in
- D. The queries currently being run by the Virtual Warehouse

Answer: B

Explanation:

Reference: <https://docs.snowflake.com/en/user-guide/warehouses-overview.html>

NEW QUESTION 110

- (Exam Topic 1)

Which of the following statements is true of Snowflake?

- A. It was built specifically for the cloud
- B. It was built as an on-premises solution and then ported to the cloud
- C. It was designed as a hybrid database to allow customers to store data either on premises or in the cloud
- D. It was built for Hadoop architecture
- E. It's based on an Oracle Architecture

Answer: A

Explanation:

Reference: <https://www.stitchdata.com/resources/snowflake/>

NEW QUESTION 113

- (Exam Topic 1)

Which of the following languages can be used to implement Snowflake User Defined Functions (UDFs)? Choose 2 answers

- A. Java
- B. JavaScript
- C. SQL
- D. Python

Answer: BC

Explanation:

Reference: <https://docs.snowflake.com/en/sql-reference/user-defined-functions.html>

NEW QUESTION 117

- (Exam Topic 1)

On which of the following cloud platforms can a Snowflake account be hosted? (Choose three.)

- A. Amazon Web Services
- B. Private Virtual Cloud
- C. Oracle Cloud
- D. Microsoft Azure Cloud
- E. Google Cloud Platform
- F. Alibaba Cloud

Answer: ADE

NEW QUESTION 118

- (Exam Topic 1)

Which statement best describes Snowflake tables?

- A. Snowflake tables are logical representations of underlying physical data
- B. Snowflake tables are the physical instantiation of data loaded into Snowflake
- C. Snowflake tables require that clustering keys be defined to perform optimally
- D. Snowflake tables are owned by a user

Answer: A

Explanation:

Reference: <https://docs.snowflake.com/en/user-guide/tables-micro-partitions.html>

NEW QUESTION 123

- (Exam Topic 1)

True or False: When a user creates a role, they are initially assigned ownership of the role and they maintain ownership until it is transferred to another user.

- A. True
- B. False

Answer: A

Explanation:

Reference: <https://docs.snowflake.com/en/user-guide/security-access-control-overview.html>

NEW QUESTION 126

- (Exam Topic 1)

True or False: Once created, a micro-partition will never be changed.

- A. True
- B. False

Answer: A

Explanation:

Reference: <https://interworks.com/blog/kbridges/2019/03/12/time-travel-with-snowflake/>

NEW QUESTION 130

- (Exam Topic 1)

When a Pipe is recreated using the CREATE OR REPLACE PIPE command:

- A. The Pipe load history is reset to empty
- B. The REFRESH parameter is set to TRUE
- C. Previously loaded files will be ignored
- D. All of the above

Answer: A

Explanation:

<https://docs.snowflake.com/en/user-guide/data-load-snowpipe-manage.html#load-history> "When a pipe is recreated, the load history is dropped."

NEW QUESTION 135

- (Exam Topic 1)

Increasing the size of a Virtual Warehouse from an X-Small to an X-Large is an example of:

- A. Scaling rhythmically
- B. Scaling max
- C. Scaling out
- D. Scaling up

Answer: D

NEW QUESTION 138

- (Exam Topic 1)

Increasing the maximum number of clusters in a Multi-Cluster Warehouse is an example of:

- A. Scaling rhythmically
- B. Scaling max
- C. Scaling out
- D. Scaling Up

Answer: C

Explanation:

<https://docs.snowflake.com/en/user-guide/warehouses-considerations.html#scaling-up-vs-scaling-out>
"Scale out by adding warehouses to a multi-cluster warehouse"

NEW QUESTION 139

- (Exam Topic 1)

which of the following are valid approaches to loading data into a snowflake table? select all the below that apply.

- A. Bulk copy from an External Stage
- B. Continuous load using Snowpipe REST API
- C. The Snowflake Web Interface (UI) data loading wizard
- D. Bulk copy from an Internal Stage

Answer: ABC

Explanation:

Reference: <https://docs.snowflake.com/en/user-guide/data-load-overview.html>

NEW QUESTION 141

- (Exam Topic 1)

Which of the following are options when creating a virtual Warehouse? Choose 2 answers

- A. Auto-drop
- B. Auto resize
- C. Auto-resume
- D. Auto-suspend

Answer: CD

Explanation:

Reference: https://help.pentaho.com/Documentation/9.1/Products/Create_Snowflake_warehouse Reference: <https://www.analytics.today/blog/what-is-a-snowflake-virtual-warehouse>

NEW QUESTION 142

- (Exam Topic 1)

When should you consider disabling auto-suspend for a Virtual Warehouse? Choose 2 answers

- A. When users will be using compute at different times throughout a 24/7 period
- B. When managing a steady workload
- C. When the compute must be available with no delay or lag time
- D. When you don't want to have to manually turn on the Warehouse each time a user needs it

Answer: BC

Explanation:

Reference: <https://docs.snowflake.com/en/user-guide/warehouses-considerations.html>

NEW QUESTION 144

- (Exam Topic 1)

Which of the following statements is true of data loading? Select one.

- A. Resizing the virtual warehouse from x-Small to Small will process a single file twice as fast
- B. The "deal file size for loading is 16MB to match micro-partition size
- C. Marry files in the 10-IOOMB range tend to land In the 'sweet spot" for load parallelism Once loaded, there is no option to force a reload of an already loaded file

Answer: C

NEW QUESTION 145

- (Exam Topic 1)

Which of the following terms best describes Snowflake's database architecture?

- A. Columnar shared nothing
- B. Shared disk
- C. Multi-cluster, shared data
- D. Cloud-native shared memory

Answer: C

Explanation:

<https://www.snowflake.com/product/architecture/>

Built from the ground up for the cloud, Snowflake's unique multi-cluster shared data architecture delivers the performance, scale, elasticity, and concurrency today's organizations require.

NEW QUESTION 148

- (Exam Topic 1)

Which of the following connectors are available in the Downloads section of the Snowflake web Interface (UI)?

Choose 2 answers

- A. SnowSQL
- B. ODBC
- C. R
- D. HIVE

Answer: AB

Explanation:

Reference: <https://docs.snowflake.com/en/user-guide/connecting.html>

NEW QUESTION 152

- (Exam Topic 1)

What is the minimum duration charged when starting a virtual warehouse?

- A. 1 second
- B. 1 minute
- C. 1 hour
- D. 1 day

Answer: B

NEW QUESTION 153

- (Exam Topic 1)

True or False: Query ID's are unique across all Snowflake deployments and can be used in communication with Snowflake Support to help troubleshoot issues.

- A. True
- B. False

Answer: A

NEW QUESTION 157

- (Exam Topic 1)

What privileges are required to execute a task?

- A. To execute a task, you need the EXECUTE TASK.
- B. A task is an account-level object and can only be executed by the Account Admin role.
- C. Tasks run automatically and do run under any rote.
- D. Tasks are stored in a special database called the utility database and require EXECUTE TASK privilege in the utility database.

Answer: A

NEW QUESTION 161

- (Exam Topic 1)

True or False: A Virtual Warehouse consumes Snowflake credits even when inactive.

- A. True
- B. False

Answer: B

Explanation:

Reference: <https://docs.snowflake.com/en/user-guide/warehouses-multicloud.html>

NEW QUESTION 166

- (Exam Topic 1)

Which of the following statements are true of Virtual Warehouses? (Choose all that apply.)

- A. Customers can change the size of the Warehouse after creation
- B. A Warehouse can be resized while running
- C. A Warehouse can be configured to suspend after a period of inactivity
- D. A Warehouse can be configured to auto-resume when new queries are submitted

Answer: ABCD

Explanation:

Reference: <https://docs.snowflake.com/en/user-guide/warehouses-multicloud.html>

NEW QUESTION 167

- (Exam Topic 1)

True or false: it is best practice to define a clustering key on every table.

- A. True
- B. False

Answer: B

Explanation:

Reference: <https://dwgeek.com/how-to-create-snowflake-clustered-tables-examples.html/>

NEW QUESTION 172

- (Exam Topic 1)

True or False: When Snowflake is configured to use Single Sign-on (sso), Snowflake receive the usernames and credentials from the sso service and loads them into the customer's Snowflake account.

- A. True
- B. false:

Answer: B

Explanation:

Reference: <https://docs.snowflake.com/en/user-guide/admin-security-fed-auth-configure-snowflake.html>

NEW QUESTION 176

- (Exam Topic 1)

What command is used to load files into an Internal Stage within Snowflake? Select one.

- A. PUT
- B. COPY INTO
- C. TRANSFER
- D. INSERT

Answer: A

Explanation:

You must specify an internal stage in the PUT command when uploading files to Snowflake. You must specify the same stage in the COPY INTO <table> command when loading data into a table from the staged files.

NEW QUESTION 181

- (Exam Topic 1)

What is the maximum compressed row size in Snowflake?

- A. 8KB
- B. 16MB
- C. 50MB
- D. 4000GB

Answer: B

Explanation:

MAX size for compressed data for semi-structured data type is also 16 MB. That means if our table has a semi-structured data type column with 16MB data other columns will have NULL data.

NEW QUESTION 182

- (Exam Topic 1)

What happens when a Data Provider revokes privileges to a Share on an object in their source database?

- A. The object immediately becomes unavailable for all Data Consumers
- B. Any additional data arriving after this point in time will not be visible to Data Consumers
- C. The Data Consumers stop seeing data updates and become responsible for storage charges for the object
- D. A static copy of the object at the time the privilege was revoked is created In the Data Consumers' accounts

Answer: A

NEW QUESTION 187

- (Exam Topic 1)

True or False: Multi_Factor Authentication (MFA) in Snowflake is only supported in conjunction with single Sign-on (sso).

- A. True
- B. False

Answer: B

Explanation:

Reference: <https://docs.snowflake.com/en/user-guide/admin-security-fed-auth-use.html>

NEW QUESTION 189

- (Exam Topic 1)

True or False: The user has to specify which cluster a query will run on in multi-clustering Warehouse.

- A. True
- B. False

Answer: B

Explanation:

Reference: <https://docs.snowflake.com/en/user-guide/warehouses-multiclust.html>

NEW QUESTION 192

- (Exam Topic 1)

Which of the following are main sections of the top navigation of the Snowflake web Interface (UI)?

- A. Database
- B. Tables
- C. Warehouses
- D. Worksheets

Answer: ACD

Explanation:

Reference: <https://docs.snowflake.com/en/user-guide/snowflake-manager.html>

NEW QUESTION 196

- (Exam Topic 1)

True or False: Snowflake charges additional fees to Data providers for each share they create.

- A. True
- B. False

Answer: B

Explanation:

"The costs for sharing data with Snowflake are minimal and straightforward. Data providers simply pay Snowflake for the data they store, and data consumers pay for the compute resources their queries consume."

NEW QUESTION 198

- (Exam Topic 2)

Which Snowflake technique can be used to improve the performance of a query?

- A. Clustering
- B. Indexing
- C. Fragmenting
- D. Using INDEX HINTS

Answer: A

Explanation:

<https://docs.snowflake.com/en/user-guide/tables-clustering-keys.html>

NEW QUESTION 202

- (Exam Topic 2)

Which of the following Snowflake features provide continuous data protection automatically? (Select TWO).

- A. Internal stages
- B. Incremental backups
- C. Time Travel
- D. Zero-copy clones
- E. Fail-safe

Answer: CE

Explanation:

Time travel and fail safe are the two continuous data protection features support the recovery of data automatically.

Snowflake provides powerful CDP features for ensuring the maintenance and availability of your historical data (i.e. data that has been changed or deleted):

- Querying, cloning, and restoring historical data in tables, schemas, and databases for up to 90 days through Snowflake Time Travel.
- Disaster recovery of historical data (by Snowflake) through Snowflake Fail-safe. <https://docs.snowflake.com/en/user-guide/data-availability.html>

NEW QUESTION 203

- (Exam Topic 2)

Which of the following is a valid source for an external stage when the Snowflake account is located on Microsoft Azure?

- A. An FTP server with TLS encryption
- B. An HTTPS server with WebDAV
- C. A Google Cloud storage bucket
- D. A Windows server file share on Azure

Answer: C

NEW QUESTION 205

- (Exam Topic 2)

Which of the following are valid methods for authenticating users for access into Snowflake? (Select THREE)

- A. SCIM
- B. Federated authentication
- C. TLS 1.2
- D. Key-pair authentication
- E. OAuth
- F. OCSP authentication

Answer: BDE

NEW QUESTION 207

- (Exam Topic 2)

What is a machine learning and data science partner within the Snowflake Partner Ecosystem?

- A. Informatica
- B. Power BI
- C. Adobe
- D. Data Robot

Answer: D

Explanation:

<https://docs.snowflake.com/en/user-guide/ecosystem-analytics.html>

NEW QUESTION 208

- (Exam Topic 2)

What happens when an external or an internal stage is dropped? (Select TWO).

- A. When dropping an external stage, the files are not removed and only the stage is dropped
- B. When dropping an external stage, both the stage and the files within the stage are removed
- C. When dropping an internal stage, the files are deleted with the stage and the files are recoverable
- D. When dropping an internal stage, the files are deleted with the stage and the files are not recoverable
- E. When dropping an internal stage, only selected files are deleted with the stage and are not recoverable

Answer: AC

NEW QUESTION 213

- (Exam Topic 2)

What feature can be used to reorganize a very large table on one or more columns?

- A. Micro-partitions
- B. Clustering keys
- C. Key partitions
- D. Clustered partitions

Answer: B

Explanation:

<https://docs.snowflake.com/en/user-guide/tables-clustering-keys.html>

NEW QUESTION 217

- (Exam Topic 2)

What is a responsibility of Snowflake's virtual warehouses?

- A. Infrastructure management
- B. Metadata management
- C. Query execution
- D. Query parsing and optimization
- E. Management of the storage layer

Answer: C

NEW QUESTION 221

- (Exam Topic 2)

True or False: A Virtual Warehouse can be resized while suspended.

- A. True
- B. False

Answer: A

Explanation:

Reference:

<https://docs.snowflake.com/en/user-guide/warehouses-tasks.html#effects-of-resizing-a-suspended-warehouse>

NEW QUESTION 226

- (Exam Topic 2)

True or False: It is possible for a user to run a query against the query result cache without requiring an active Warehouse.

- A. True
- B. False

Answer: A

Explanation:

Query result cache is all about fetching the data from cloud services layer and saving the cost by not running the virtual warehouse.

NEW QUESTION 227

- (Exam Topic 2)

What features does Snowflake Time Travel enable?

- A. Querying data-related objects that were created within the past 365 days
- B. Restoring data-related objects that have been deleted within the past 90 days
- C. Conducting point-in-time analysis for BI reporting
- D. Analyzing data usage/manipulation over all periods of time

Answer: B

Explanation:

Snowflake Time Travel enables accessing historical data (i.e. data that has been changed or deleted) at any point within a defined period. It serves as a powerful tool for performing the following tasks:

- Restoring data-related objects (tables, schemas, and databases) that might have been accidentally or intentionally deleted.
- Duplicating and backing up data from key points in the past.
- Analyzing data usage/manipulation over specified periods of time.

<https://docs.snowflake.com/en/user-guide/data-time-travel.html>

NEW QUESTION 229

- (Exam Topic 2)

Which copy INTO command outputs the data into one file?

- A. SINGLE=TRUE
- B. MAX_FILE_NUMBER=1
- C. FILE_NUMBER=1
- D. MULTIPLE=FAISE

Answer: A

NEW QUESTION 232

- (Exam Topic 2)

A company's security audit requires generating a report listing all Snowflake logins (e.g.. date and user) within the last 90 days. Which of the following statements will return the required information?

- A. SELECT LAST_SUCCESS_LOGIN, LOGIN_NAME FROM ACCOUNT_USAGE.USERS;

- B. SELECT EVENT_TIMESTAMP, USER_NAME FROM table(information_schema.login_history_by_user())
- C. SELECT EVENT_TIMESTAMP, USER_NAME FROM ACCOUNT_USAGE.ACCESS_HISTORY;
- D. SELECT EVENT_TIMESTAMP, USER_NAME FROM ACCOUNT_USAGE.LOGIN_HISTORY;

Answer: D

NEW QUESTION 235

- (Exam Topic 2)

In which use cases does Snowflake apply egress charges?

- A. Data sharing within a specific region
- B. Query result retrieval
- C. Database replication
- D. Loading data into Snowflake

Answer: A

Explanation:

Cloud providers apply data egress charges in either of the following use cases:

- > Data is transferred from one region to another within the same cloud platform.
- > Data is transferred out of the cloud platform.

<https://docs.snowflake.com/en/user-guide/billing-data-transfer.html#:~:text=Cloud%20providers%20apply%20d>

NEW QUESTION 239

- (Exam Topic 2)

Which command is used to unload data from a Snowflake table into a file in a stage?

- A. COPY INTO
- B. GET
- C. WRITE
- D. EXTRACT INTO

Answer: A

Explanation:

<https://docs.snowflake.com/en/user-guide/data-unload-snowflake.html#:~:text=Your%20User%20Stage-,Use%2>

NEW QUESTION 240

- (Exam Topic 2)

How long is Snowpipe data load history retained?

- A. As configured in the create pipe settings
- B. Until the pipe is dropped
- C. 64 days
- D. 14 days

Answer: C

Explanation:

Bulk data load

Stored in the metadata of the target table for 64 days. Available upon completion of the COPY statement as the statement output.

<https://docs.snowflake.com/en/user-guide/data-load-snowpipe-intro.html#:~:text=Load%20History,-Bulk%20da>

NEW QUESTION 245

- (Exam Topic 2)

What is the MOST performant file format for loading data in Snowflake?

- A. CSV (Unzipped)
- B. Parquet
- C. CSV (Gzipped)
- D. ORC

Answer: A

NEW QUESTION 246

- (Exam Topic 2)

A user unloaded a Snowflake table called mytable to an internal stage called mystage. Which command can be used to view the list of files that has been uploaded to the staged?

- A. list @mytable;
- B. list @%mytable;
- C. list @ %m.ystage;
- D. list @mystage;

Answer: D

NEW QUESTION 247

- (Exam Topic 2)

Which command can be used to load data into an internal stage?

- A. LOAD
- B. copy
- C. GET
- D. PUT

Answer: D

Explanation:

<https://medium.com/@divyanshsaxenaofficial/snowflake-loading-unloading-of-data-part-1-internal-stages-7121>

NEW QUESTION 249

- (Exam Topic 2)

Which Snowflake object enables loading data from files as soon as they are available in a cloud storage location?

- A. Pipe
- B. External stage
- C. Task
- D. Stream

Answer: A

Explanation:

Snowpipe enables loading data from files as soon as they're available in a stage. This means you can load data from files in micro-batches, making it available to users within minutes, rather than manually executing COPY statements on a schedule to load larger batches.

<https://docs.snowflake.com/en/user-guide/data-load-snowpipe-intro.html>

NEW QUESTION 250

- (Exam Topic 2)

Which of the following objects can be shared through secure data sharing?

- A. Masking policy
- B. Stored procedure
- C. Task
- D. External table

Answer: D

Explanation:

Secure Data Sharing enables sharing selected objects in a database in your account with other Snowflake accounts. The following Snowflake database objects can be shared:

- > Tables
- > External tables
- > Secure views
- > Secure materialized views
- > Secure UDFs

Snowflake enables the sharing of databases through shares, which are created by data providers and "imported" by data consumers.

<https://docs.snowflake.com/en/user-guide/data-sharing-intro.html#:~:text=Secure%20Data%20Sharing%20enab>

NEW QUESTION 255

- (Exam Topic 2)

What SQL command would be used to view all roles that were granted to user.1?

- A. show grants to user USER1;
- B. show grants of user USER1;
- C. describe user USER1;
- D. show grants on user USER1;

Answer: A

NEW QUESTION 260

- (Exam Topic 2)

Which command can be used to stage local files from which Snowflake interface?

- A. SnowSQL
- B. Snowflake classic web interface (UI)
- C. Snowsight
- D. .NET driver

Answer: A

Explanation:

<https://docs.snowflake.com/en/user-guide/snowsql-use.html>

NEW QUESTION 264

- (Exam Topic 2)

Query compilation occurs in which architecture layer of the Snowflake Cloud Data Platform?

- A. Compute layer
- B. Storage layer
- C. Cloud infrastructure layer
- D. Cloud services layer

Answer: A

Explanation:

For query execution, Snowflake uses the Virtual Warehouse. The query processing layer is separated from the disk storage layer in the Snowflake data architecture. You can use the data from the storage layer to run queries in this layer

<https://www.projectpro.io/article/snowflake-architecture-what-does-snowflake-do/556#:~:text=Query%20Proce>

NEW QUESTION 269

- (Exam Topic 2)

The Information Schema and Account Usage Share provide storage information for which of the following objects? (Choose three.)

- A. Users
- B. Tables
- C. Databases
- D. Internal Stages

Answer: ABC

NEW QUESTION 271

- (Exam Topic 2)

What is the default character set used when loading CSV files into Snowflake?

- A. UTF-8
- B. UTF-16
- C. ISO S859-1
- D. ANSI_X3.A

Answer: A

Explanation:

[https://docs.snowflake.com/en/user-guide/intro-summary-loading.html#:~:text=For%20delimited%20files%20\(](https://docs.snowflake.com/en/user-guide/intro-summary-loading.html#:~:text=For%20delimited%20files%20(For delimited files (CSV, TSV, etc.), the default character set is UTF-8. To use any other characters sets, you must explicitly specify the encoding to use for loading. For the list of supported character sets, see Supported Character Sets for Delimited Files (in this topic).) For delimited files (CSV, TSV, etc.), the default character set is UTF-8. To use any other characters sets, you must explicitly specify the encoding to use for loading. For the list of supported character sets, see Supported Character Sets for Delimited Files (in this topic).

NEW QUESTION 272

- (Exam Topic 2)

Which account ____ usage views are used to evaluate the details of dynamic data masking? (Select TWO)

- A. ROLES
- B. POLICY_REFERENCES
- C. QUERY_HISTORY
- D. RESOURCE_MONITORS
- E. ACCESS_HISTORY

Answer: BC

Explanation:

<https://docs.snowflake.com/en/user-guide/security-column-ddm-intro.html#:~:text=DESCRIBE%20MASKING>

NEW QUESTION 275

- (Exam Topic 2)

Which of the following Snowflake capabilities are available in all Snowflake editions? (Select TWO)

- A. Customer-managed encryption keys through Tri-Secret Secure
- B. Automatic encryption of all data
- C. Up to 90 days of data recovery through Time Travel
- D. Object-level access control
- E. Column-level security to apply data masking policies to tables and views

Answer: BD

Explanation:

<https://docs.snowflake.com/en/user-guide/intro-editions.html>

NEW QUESTION 276

- (Exam Topic 2)

How would you determine the size of the virtual warehouse used for a task?

- A. Root task may be executed concurrently (i.
- B. multiple instances), it is recommended to leave some margins in the execution window to avoid missing instances of execution
- C. Querying (select) the size of the stream content would help determine the warehouse siz
- D. For example, if querying large stream content, use a larger warehouse size
- E. If using the stored procedure to execute multiple SQL statements, it's best to test run the stored procedure separately to size the compute resource first
- F. Since task infrastructure is based on running the task body on schedule, it's recommended to configure the virtual warehouse for automatic concurrency handling using Multi-cluster warehouse (MCW) to match the task schedule

Answer: C

NEW QUESTION 277

- (Exam Topic 2)

What is a limitation of a Materialized View?

- A. A Materialized View cannot support any aggregate functions
- B. A Materialized View can only reference up to two tables
- C. A Materialized View cannot be joined with other tables
- D. A Materialized View cannot be defined with a JOIN

Answer: D

Explanation:

There are several limitations to using materialized views:

- > A materialized view can query only a single table.
- > Joins, including self-joins, are not supported.

NEW QUESTION 280

- (Exam Topic 2)

A user needs to create a materialized view in the schema MYDB.MYSCHEMA. Which statements will provide this access?

- A. GRANT ROLE MYROLE TO USER USER1;CREATE MATERIALIZED VIEW ON SCHEMA MYDB.MYSCHEMA TO ROLE MYROLE;
- B. GRANT ROLE MYROLE TO USER USER1;CREATE MATERIALIZED VIEW ON SCHEMA MYDB.MYSCHEMA TO USER USER1;
- C. GRANT ROLE MYROLE TO USER USER1;CREATE MATERIALIZED VIEW ON SCHEMA MYDB.MYSCHEMA TO USER1;
- D. GRANT ROLE MYROLE TO USER USER1;CREATE MATERIALIZED VIEW ON SCHEMA MYDB.MYSCHEMA TO MYROLE;

Answer: B

NEW QUESTION 281

- (Exam Topic 2)

What Snowflake features allow virtual warehouses to handle high concurrency workloads? (Select TWO)

- A. The ability to scale up warehouses
- B. The use of warehouse auto scaling
- C. The ability to resize warehouses
- D. Use of multi-clustered warehouses
- E. The use of warehouse indexing

Answer: BD

NEW QUESTION 283

- (Exam Topic 2)

User-level network policies can be created by which of the following roles? (Select TWO).

- A. ROLEADMIN
- B. ACCOUNTADMIN
- C. SYSADMIN
- D. SECURITYADMIN
- E. USERADMIN

Answer: DE

Explanation:

By default, Snowflake allows users to connect to the service from any computer or device IP address. A security administrator (or higher) can create a network policy to allow or deny access to a single IP address or a list of addresses. Network policies currently support only Internet Protocol version 4 (i.e. IPv4) addresses. An administrator with sufficient permissions can create any number of network policies. [https://docs.snowflake.com/en/user-guide/network-policies.html#:~:text=A%20security%20administrator%20\(o](https://docs.snowflake.com/en/user-guide/network-policies.html#:~:text=A%20security%20administrator%20(o)

NEW QUESTION 284

- (Exam Topic 2)

Which Snowflake partner specializes in data catalog solutions?

- A. Alation
- B. DataRobot
- C. dbt
- D. Tableau

Answer: A

Explanation:

Alation provides Data Cataloging functionality. They state they are the 'One Place to Find, Understand, & Govern Data Across an Enterprise.
<https://docs.snowflake.com/en/user-guide/ecosystem-all.html>

NEW QUESTION 287

- (Exam Topic 2)

What are value types that a VARIANT column can store? (Select TWO)

- A. STRUCT
- B. OBJECT
- C. BINARY
- D. ARRAY
- E. CLOB

Answer: BD

Explanation:

Characteristics of a VARIANT

A VARIANT can store a value of any other type, including OBJECT and ARRAY. The maximum length of a VARIANT is 16 MB.

<https://docs.snowflake.com/en/sql-reference/data-types-semistructured.html#:~:text=VARIANT-,Characteristics>

NEW QUESTION 292

- (Exam Topic 2)

Which of the following are best practice recommendations that should be considered when loading data into Snowflake? (Select TWO).

- A. Load files that are approximately 25 MB or smaller.
- B. Remove all dates and timestamps.
- C. Load files that are approximately 100-250 MB (or larger)
- D. Avoid using embedded characters such as commas for numeric data types
- E. Remove semi-structured data types

Answer: CD

Explanation:

<https://docs.snowflake.com/en/user-guide/data-load-considerations-prepare.html>

NEW QUESTION 295

- (Exam Topic 2)

When is the result set cache no longer available? (Select TWO)

- A. When another warehouse is used to execute the query
- B. When another user executes the query
- C. When the underlying data has changed
- D. When the warehouse used to execute the query is suspended
- E. When it has been 24 hours since the last query

Answer: CE

NEW QUESTION 300

- (Exam Topic 2)

What are two ways to create and manage Data Shares in Snowflake? (Choose two.)

- A. Via the Snowflake Web Interface (UI)
- B. Via the data_share=true parameter
- C. Via SQL commands
- D. Via Virtual Warehouses

Answer: AC

Explanation:

Reference: <https://docs.snowflake.com/en/user-guide/data-sharing-provider.html>

NEW QUESTION 302

- (Exam Topic 2)

Which feature is only available in the Enterprise or higher editions of Snowflake?

- A. Column-level security
- B. SOC 2 type II certification
- C. Multi-factor Authentication (MFA)
- D. Object-level access control

Answer: A

Explanation:

<https://docs.snowflake.com/en/user-guide/intro-editions.html>

NEW QUESTION 305

- (Exam Topic 2)

Which data types does Snowflake support when querying semi-structured data? (Select TWO)

- A. VARIANT
- B. ARRAY
- C. VARCHAR
- D. XML
- E. BLOB

Answer: AB

Explanation:

<https://docs.snowflake.com/en/user-guide/semistructured-intro.html#label-loading-semi-structured-data>

A VARIANT stores semi-structured data in Snowflake. It can store a value of any other type, including OBJECT and ARRAY.

The maximum length of a VARIANT is 16 MB.

A Snowflake ARRAY is similar to an array in many other programming languages. An ARRAY contains 0 or more pieces of data. Each element is accessed by specifying its position in the array.

NEW QUESTION 306

- (Exam Topic 2)

What transformations are supported in a CREATE PIPE ... AS COPY ... FROM (....) statement? (Select TWO.)

- A. Data can be filtered by an optional where clause
- B. Incoming data can be joined with other tables
- C. Columns can be reordered
- D. Columns can be omitted
- E. Row level access can be defined

Answer: CD

NEW QUESTION 307

- (Exam Topic 3)

Which of the following is an example of an operation that can be completed without requiring compute, assuming no queries have been executed previously?

- A. SELECT SUM (ORDER_AMT) FROM SALES;
- B. SELECT AVG(ORDER_QTY) FROM SALES;
- C. SELECT MIN(ORDER_AMT) FROM SALES;
- D. SELECT ORDER_AMT * ORDER_QTY FROM SALES;

Answer: B

NEW QUESTION 309

- (Exam Topic 3)

Which of the following are handled by the cloud services layer of the Snowflake architecture? (Choose two.)

- A. Query execution
- B. Data loading
- C. Time Travel data
- D. Security
- E. Authentication and access control

Answer: BD

NEW QUESTION 312

- (Exam Topic 3)

A user is preparing to load data from an external stage

Which practice will provide the MOST efficient loading performance?

- A. Organize files into logical paths
- B. Store the files on the external stage to ensure caching is maintained
- C. Use pattern matching for regular expression execution
- D. Load the data in one large file

Answer: D

NEW QUESTION 315

- (Exam Topic 3)

What is the minimum Fail-safe retention time period for transient tables?

- A. 1 day
- B. 7 days
- C. 12 hours
- D. 0 days

Answer: D

NEW QUESTION 316

- (Exam Topic 3)

A user created a new worksheet within the Snowsight UI and wants to share this with teammates How can this worksheet be shared?

- A. Create a zero-copy clone of the worksheet and grant permissions to teammates
- B. Create a private Data Exchange so that any teammate can use the worksheet
- C. Share the worksheet with teammates within Snowsight
- D. Create a database and grant all permissions to teammates

Answer: C

NEW QUESTION 317

- (Exam Topic 3)

A single user of a virtual warehouse has set the warehouse to auto-resume and auto-suspend after 10 minutes. The warehouse is currently suspended and the user performs the following actions:

- * 1. Runs a query that takes 3 minutes to complete
- * 2. Leaves for 15 minutes
- * 3. Returns and runs a query that takes 10 seconds to complete
- * 4. Manually suspends the warehouse as soon as the last query was completed

When the user returns, how much billable compute time will have been consumed?

- A. 4 minutes
- B. 10 minutes
- C. 14 minutes
- D. 24 minutes

Answer: C

NEW QUESTION 319

- (Exam Topic 3)

What are supported file formats for unloading data from Snowflake? (Choose three.)

- A. XML
- B. JSON
- C. Parquet
- D. ORC
- E. AVRO
- F. CSV

Answer: BCF

NEW QUESTION 323

- (Exam Topic 3)

What happens to the shared objects for users in a consumer account from a share, once a database has been created in that account?

- A. The shared objects are transferred.
- B. The shared objects are copied.
- C. The shared objects become accessible.
- D. The shared objects can be re-shared.

Answer: B

NEW QUESTION 327

- (Exam Topic 3)

Snowflake supports the use of external stages with which cloud platforms? (Choose three.)

- A. Amazon Web Services
- B. Docker
- C. IBM Cloud
- D. Microsoft Azure Cloud
- E. Google Cloud Platform
- F. Oracle Cloud

Answer: BDE

NEW QUESTION 328

- (Exam Topic 3)

What is the maximum Time Travel retention period for a temporary Snowflake table?

- A. 90 days
- B. 1 day
- C. 7 days
- D. 45 days

Answer: B

NEW QUESTION 330

- (Exam Topic 3)

A materialized view should be created when which of the following occurs? (Choose two.)

- A. There is minimal cost associated with running the query.
- B. The query consumes many compute resources every time it runs.
- C. The base table gets updated frequently.
- D. The query is highly optimized and does not consume many compute resources.
- E. The results of the query do not change often and are used frequently.

Answer: CE

NEW QUESTION 333

- (Exam Topic 3)

What is the MINIMUM Snowflake edition required to use the periodic rekeying of micro-partitions?

- A. Enterprise
- B. Business Critical
- C. Standard
- D. Virtual Private Snowflake

Answer: B

Explanation:

Reference: <https://docs.snowflake.com/en/user-guide/intro-editions.html#business-critical-edition>

NEW QUESTION 336

- (Exam Topic 3)

Which feature allows a user the ability to control the organization of data in a micro-partition?

- A. Range Partitioning
- B. Search Optimization Service
- C. Automatic Clustering
- D. Horizontal Partitioning

Answer: D

NEW QUESTION 341

- (Exam Topic 3)

Where can a user find and review the failed logins of a specific user for the past 30 days?

- A. The USERS view in ACCOUNT_USAGE
- B. The LOGIN_HISTORY view in ACCOUNT_USAGE
- C. The ACCESS_HISTORY view in ACCOUNT_USAGE
- D. The SESSIONS view in ACCOUNT_USAGE

Answer: B

NEW QUESTION 345

- (Exam Topic 3)

What is the MINIMUM edition of Snowflake that is required to use a SCIM security integration?

- A. Business Critical Edition
- B. Standard Edition
- C. Virtual Private Snowflake (VPS)
- D. Enterprise Edition

Answer: D

NEW QUESTION 347

- (Exam Topic 3)

How long is the Fail-safe period for temporary and transient tables?

- A. There is no Fail-safe period for these tables.
- B. 1 day
- C. 7 days
- D. 31 days
- E. 90 days

Answer: A

Explanation:

Reference: <https://docs.snowflake.com/en/user-guide/tables-temp-transient.html>

NEW QUESTION 350

- (Exam Topic 3)

Which data type can store more than one type of data structure?

- A. JSON
- B. BINARY
- C. VARCHAR
- D. VARIANT

Answer: D

NEW QUESTION 355

- (Exam Topic 3)

Which query profile statistics help determine if efficient pruning is occurring? (Choose two.)

- A. Bytes sent over network
- B. Percentage scanned from cache
- C. Partitions total
- D. Bytes spilled to local storage
- E. Partitions scanned

Answer: BE

NEW QUESTION 357

- (Exam Topic 3)

A data provider wants to share data with a consumer who does not have a Snowflake account. The provider creates a reader account for the consumer following these steps:

- * 1. Created a user called "CONSUMER"
- * 2. Created a database to hold the share and an extra-small warehouse to query the data
- * 3. Granted the role PUBLIC the following privileges: Usage on the warehouse, database, and schema, and SELECT on all the objects in the share

Based on this configuration what is true of the reader account?

- A. The reader account will automatically use the Standard edition of Snowflake.
- B. The reader account compute will be billed to the provider account.
- C. The reader account can clone data the provider has shared, but cannot re-share it.
- D. The reader account can create a copy of the shared data using CREATE TABLE AS...

Answer: C

NEW QUESTION 360

- (Exam Topic 3)

How can a row access policy be applied to a table or a view? (Choose two.)

- A. Within the policy DDL
- B. Within the create table or create view DDL
- C. By future APPLY for all objects in a schema
- D. Within a control table
- E. Using the command ALTER <object> ADD ROW ACCESS POLICY <policy>;

Answer: BD

NEW QUESTION 365

- (Exam Topic 3)

What is the purpose of multi-cluster virtual warehouses?

- A. To create separate data warehouses to increase query optimization
- B. To allow users the ability to choose the type of compute nodes that make up a virtual warehouse cluster
- C. To eliminate or reduce Queuing of concurrent queries
- D. To allow the warehouse to resize automatically

Answer: C

Explanation:

<https://docs.snowflake.com/en/user-guide/warehouses-multiclust.html#:~:text=Multi%2Dcluster%20warehous>

NEW QUESTION 368

- (Exam Topic 3)

Which stages are used with the Snowflake PUT command to upload files from a local file system? (Choose three.)

- A. Schema Stage
- B. User Stage
- C. Database Stage
- D. Table Stage
- E. External Named Stage
- F. Internal Named Stage

Answer: AEF

NEW QUESTION 369

- (Exam Topic 3)

How can a user change which columns are referenced in a view?

- A. Modify the columns in the underlying table
- B. Use the ALTER VIEW command to update the view
- C. Recreate the view with the required changes
- D. Materialize the view to perform the changes

Answer: B

NEW QUESTION 371

- (Exam Topic 3)

Which Snowflake objects can be shared with other Snowflake accounts? (Choose three.)

- A. Schemas
- B. Roles
- C. Secure Views
- D. Stored Procedures
- E. Tables
- F. Secure User-Defined Functions (UDFs)

Answer: ABF

NEW QUESTION 373

- (Exam Topic 3)

What is the following SQL command used for? `Select * from table(validate(t1, job_id => '_last'));`

- A. To validate external table files in table t1 across all sessions
- B. To validate task SQL statements against table t1 in the last 14 days
- C. To validate a file for errors before it gets executed using a COPY command
- D. To return errors from the last executed COPY command into table t1 in the current session

Answer: D

NEW QUESTION 377

- (Exam Topic 3)

A company needs to read multiple terabytes of data for an initial load as part of a Snowflake migration. The company can control the number and size of CSV extract files.

How does Snowflake recommend maximizing the load performance?

- A. Use auto-ingest Snowpipes to load large files in a serverless model.
- B. Produce the largest files possible, reducing the overall number of files to process.
- C. Produce a larger number of smaller files and process the ingestion with size Small virtual warehouses.
- D. Use an external tool to issue batched row-by-row inserts within BEGIN TRANSACTION and COMMIT commands.

Answer: B

NEW QUESTION 381

- (Exam Topic 3)

Which of the following is a data tokenization integration partner?

- A. Protegrity
- B. Tableau
- C. DBeaver
- D. SAP

Answer: A

NEW QUESTION 386

- (Exam Topic 3)

Which of the following are characteristics of Snowflake virtual warehouses? (Choose two.)

- A. Auto-resume applies only to the last warehouse that was started in a multi-cluster warehouse.
- B. The ability to auto-suspend a warehouse is only available in the Enterprise edition or above.
- C. SnowSQL supports both a configuration file and a command line option for specifying a default warehouse.
- D. A user cannot specify a default warehouse when using the ODBC driver.
- E. The default virtual warehouse size can be changed at any time.

Answer: A

NEW QUESTION 387

- (Exam Topic 3)

Which tasks are performed in the Snowflake Cloud Services layer? (Choose two.)

- A. Management of metadata
- B. Computing the data
- C. Maintaining Availability Zones
- D. Infrastructure security
- E. Parsing and optimizing queries

Answer: AE

NEW QUESTION 388

- (Exam Topic 3)

Which of the following can be used when unloading data from Snowflake? (Choose two.)

- A. When unloading semi-structured data, it is recommended that the STRIP_OUTER_ARRAY option be used.
- B. Use the ENCODING file format option to change the encoding from the default UTF-8.
- C. The OBJECT_CONSTRUCT function can be used to convert relational data to semi-structured data.
- D. By using the SINGLE = TRUE parameter, a single file up to 5 GB in size can be exported to the storage layer.
- E. Use the PARSE_JSON function to ensure structured data will be unloaded into the VARIANT data type.

Answer: AD

NEW QUESTION 392

- (Exam Topic 3)

A user has unloaded data from a Snowflake table to an external stage.

Which command can be used to verify if data has been uploaded to the external stage named my_stage?

- A. view @my_stage
- B. list @my_stage
- C. show @my_stage
- D. display @my_stage

Answer: B

NEW QUESTION 394

- (Exam Topic 3)

When loading data into Snowflake, how should the data be organized?

- A. Into single files with 100-250 MB of compressed data per file
- B. Into single files with 1-100 MB of compressed data per file
- C. Into files of maximum size of 1 GB of compressed data per file
- D. Into files of maximum size of 4 GB of compressed data per file

Answer: A

NEW QUESTION 399

- (Exam Topic 3)

Which of the following accurately describes shares?

- A. Tables, secure views, and secure UDFs can be shared
- B. Shares can be shared
- C. Data consumers can clone a new table from a share
- D. Access to a share cannot be revoked once granted

Answer: A

NEW QUESTION 402

- (Exam Topic 3)

What is a responsibility of Snowflake's virtual warehouses?

- A. Infrastructure management
- B. Metadata management
- C. Query execution
- D. Query parsing and optimization
- E. Permanent storage of micro-partitions

Answer: C

Explanation:

Reference:

<https://docs.snowflake.com/en/user-guide/warehouses.html#:~:text=A%20warehouse%20provides%20the%20re>

NEW QUESTION 406

- (Exam Topic 3)

What is the minimum Snowflake edition needed for database failover and fail-back between Snowflake accounts for business continuity and disaster recovery?

- A. Standard
- B. Enterprise
- C. Business Critical
- D. Virtual Private Snowflake

Answer: B

NEW QUESTION 407

- (Exam Topic 3)

What is the default file size when unloading data from Snowflake using the COPY command?

- A. 5 MB
- B. 8 GB
- C. 16 MB
- D. 32 MB

Answer: C

NEW QUESTION 410

- (Exam Topic 3)

What is an advantage of using an explain plan instead of the query profiler to evaluate the performance of a query?

- A. The explain plan output is available graphically.
- B. An explain plan can be used to conduct performance analysis without executing a query.
- C. An explain plan will handle queries with temporary tables and the query profiler will not.
- D. An explain plan's output will display automatic data skew optimization information.

Answer: B

NEW QUESTION 412

- (Exam Topic 3)

What are common issues found by using the Query Profile? (Choose two.)

- A. Identifying queries that will likely run very slowly before executing them
- B. Locating queries that consume a high amount of credits
- C. Identifying logical issues with the queries
- D. Identifying inefficient micro-partition pruning
- E. Data spilling to a local or remote disk

Answer: AD

NEW QUESTION 414

- (Exam Topic 3)

Which statements reflect key functionalities of a Snowflake Data Exchange? (Choose two.)

- A. If an account is enrolled with a Data Exchange, it will lose its access to the Snowflake Marketplace.
- B. A Data Exchange allows groups of accounts to share data privately among the accounts.
- C. A Data Exchange allows accounts to share data with third, non-Snowflake parties.
- D. Data Exchange functionality is available by default in accounts using the Enterprise edition or higher.
- E. The sharing of data in a Data Exchange is bidirectional
- F. An account can be a provider for some datasets and a consumer for others.

Answer: B

NEW QUESTION 417

- (Exam Topic 3)

A running virtual warehouse is suspended.

What is the MINIMUM amount of time that the warehouse will incur charges for when it is restarted?

- A. 1 second
- B. 60 seconds
- C. 5 minutes
- D. 60 minutes

Answer: B

NEW QUESTION 421

- (Exam Topic 3)

Which minimum Snowflake edition allows for a dedicated metadata store?

- A. Standard
- B. Enterprise
- C. Business Critical
- D. Virtual Private Snowflake

Answer: D

Explanation:

Reference: <https://docs.snowflake.com/en/user-guide/intro-editions.html>

NEW QUESTION 424

- (Exam Topic 3)

Which Snowflake feature allows a user to substitute a randomly generated identifier for sensitive data, in order to prevent unauthorized users access to the data,

before loading it into Snowflake?

- A. External Tokenization
- B. External Tables
- C. Materialized Views
- D. User-Defined Table Functions (UDTF)

Answer: A

NEW QUESTION 429

- (Exam Topic 3)

How are serverless features billed?

- A. Per second multiplied by an automatic sizing for the job
- B. Per minute multiplied by an automatic sizing for the job, with a minimum of one minute
- C. Per second multiplied by the size, as determined by the SERVERLESS_FEATURES_SIZE account parameter
- D. Serverless features are not billed, unless the total cost for the month exceeds 10% of the warehouse credits, on the account

Answer: D

NEW QUESTION 432

- (Exam Topic 3)

Users are responsible for data storage costs until what occurs?

- A. Data expires from Time Travel
- B. Data expires from Fail-safe
- C. Data is deleted from a table
- D. Data is truncated from a table

Answer: B

NEW QUESTION 434

- (Exam Topic 3)

What affects whether the query results cache can be used?

- A. If the query contains a deterministic function
- B. If the virtual warehouse has been suspended
- C. If the referenced data in the table has changed
- D. If multiple users are using the same virtual warehouse

Answer: B

NEW QUESTION 438

- (Exam Topic 3)

In an auto-scaling multi-cluster virtual warehouse with the setting SCALING_POLICY = ECONOMY enabled, when is another cluster started?

- A. When the system has enough load for 2 minutes
- B. When the system has enough load for 6 minutes
- C. When the system has enough load for 8 minutes
- D. When the system has enough load for 10 minutes

Answer: D

NEW QUESTION 442

- (Exam Topic 3)

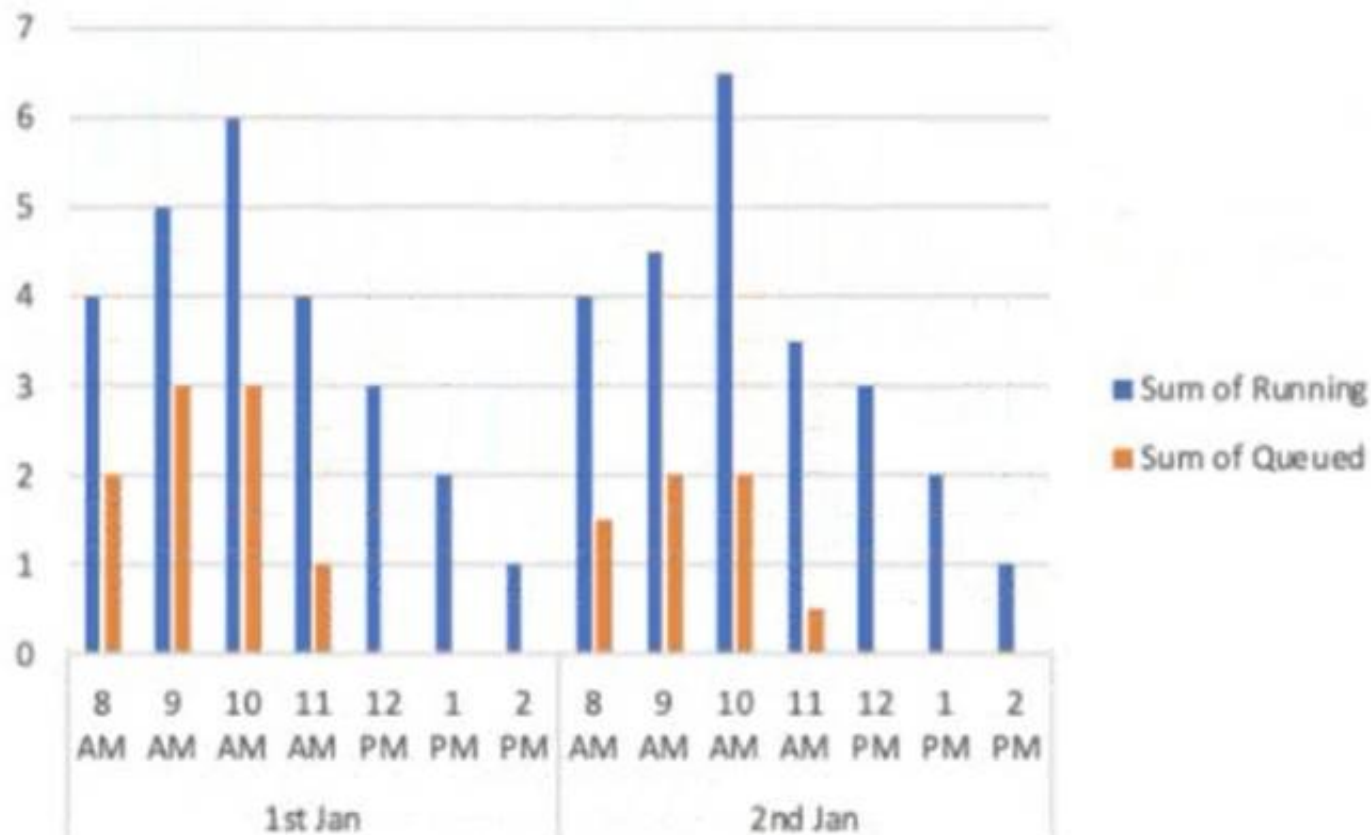
A virtual warehouse is created using the following command:

Create warehouse my_WH with warehouse_size = MEDIUM min_cluster_count = 1

max_cluster_count = 1

auto_suspend = 60 auto_resume = true;

The image below is a graphical representation of the warehouse utilization across two days.



What action should be taken to address this situation?

- A. Increase the warehouse size from Medium to 2XL.
- B. Increase the value for the parameter MAX_CONCURRENCY_LEVEL.
- C. Configure the warehouse to a multi-cluster warehouse.
- D. Lower the value of the parameter STATEMENT_QUEUED_TIMEOUT_IN_SECONDS.

Answer: B

NEW QUESTION 445

- (Exam Topic 3)

Which statement is true about running tasks in Snowflake?

- A. A task can be called using a CALL statement to run a set of predefined SQL commands.
- B. A task allows a user to execute a single SQL statement/command using a predefined schedule.
- C. A task allows a user to execute a set of SQL commands on a predefined schedule.
- D. A task can be executed using a SELECT statement to run a predefined SQL command.

Answer: C

NEW QUESTION 447

- (Exam Topic 3)

A Snowflake Administrator needs to ensure that sensitive corporate data in Snowflake tables is not visible to end users, but is partially visible to functional managers.

How can this requirement be met?

- A. Use data encryption.
- B. Use dynamic data masking.
- C. Use secure materialized views.
- D. Revoke all roles for functional managers and end users.

Answer: B

NEW QUESTION 448

- (Exam Topic 3)

Which of the following practices are recommended when creating a user in Snowflake? (Choose two.)

- A. Configure the user to be initially disabled.
- B. Force an immediate password change.
- C. Set a default role for the user.
- D. Set the number of minutes to unlock to 15 minutes.
- E. Set the user's access to expire within a specified timeframe.

Answer: AE

NEW QUESTION 452

- (Exam Topic 3)

How would a user execute a series of SQL statements using a task?

- A. Include the SQL statements in the body of the task `CREATE TASK mytask .. AS INSERT INTO target1 SELECT .. FROM stream_s1 WHERE .. INSERT INTO target2 SELECT .. FROM stream_s1 WHERE ..`
- B. A stored procedure can have only one DML statement per stored procedure invocation and therefore the user should sequence stored procedure calls in the task definition `CREATE TASK mytask AS call stored_proc1(); call stored_proc2();`

- C. Use a stored procedure executing multiple SQL statements and invoke the stored procedure from the tas
- D. CREATE TASK mytask AS call stored_proc_multiple_statements_inside();
- E. Create a task for each SQL statement (e.
- F. resulting in task1, task2, etc.) and string the series of SQL statements by having a control task calling task1, task2, et
- G. sequentially.

Answer: D

NEW QUESTION 457

- (Exam Topic 3)

Why does Snowflake recommend file sizes of 100-250 MB compressed when loading data?

- A. Optimizes the virtual warehouse size and multi-cluster setting to economy mode
- B. Allows a user to import the files in a sequential order
- C. Increases the latency staging and accuracy when loading the data
- D. Allows optimization of parallel operations

Answer: D

NEW QUESTION 458

- (Exam Topic 3)

True or False: Snowpipe via REST API can only reference External Stages as source.

- A. True
- B. False

Answer: B

Explanation:

Reference: <https://community.snowflake.com/s/article/Making-Transient-table-by-Default>

NEW QUESTION 461

- (Exam Topic 3)

Which of the following objects can be directly restored using the UNDROP command? (Choose two.)

- A. Schema
- B. View
- C. Internal stage
- D. Table
- E. User
- F. Role

Answer: AD

NEW QUESTION 464

- (Exam Topic 3)

Which file formats are supported for unloading data from Snowflake? (Choose two.)

- A. Avro
- B. JSON
- C. ORC
- D. XML
- E. Delimited (CSV, TSV, etc.)

Answer: CE

Explanation:

Reference:

[https://docs.snowflake.com/en/user-guide/data-unload-prepare.html#:~:text=Supported%20File%20Formats,-Th%20comma%20\(i.e.%20CSV\).&text=File%20format%20options%20specify%20the,the%20format%20of%20th](https://docs.snowflake.com/en/user-guide/data-unload-prepare.html#:~:text=Supported%20File%20Formats,-Th%20comma%20(i.e.%20CSV).&text=File%20format%20options%20specify%20the,the%20format%20of%20th)

NEW QUESTION 469

- (Exam Topic 3)

What versions of Snowflake should be used to manage compliance with Personal Identifiable Information (PII) requirements? (Choose two.)

- A. Custom Edition
- B. Virtual Private Snowflake
- C. Business Critical Edition
- D. Standard Edition
- E. Enterprise Edition

Answer: BC

NEW QUESTION 472

- (Exam Topic 3)

Which of the following are best practices for loading data into Snowflake? (Choose three.)

- A. Aim to produce data files that are between 100 MB and 250 MB in size, compressed.
- B. Load data from files in a cloud storage service in a different region or cloud platform from the service or region containing the Snowflake account, to save on cost.
- C. Enclose fields that contain delimiter characters in single or double quotes.
- D. Split large files into a greater number of smaller files to distribute the load among the compute resources in an active warehouse.
- E. When planning which warehouse(s) to use for data loading, start with the largest warehouse possible.
- F. Partition the staged data into large folders with random paths, allowing Snowflake to determine the bestway to load each file.

Answer: BCE

NEW QUESTION 475

- (Exam Topic 3)

Which Snowflake layer is always leveraged when accessing a query from the result cache?

- A. Metadata
- B. Data Storage
- C. Compute
- D. Cloud Services

Answer: D

NEW QUESTION 480

- (Exam Topic 3)

Which database objects can be shared with the Snowflake secure data sharing feature? (Choose two.)

- A. Files
- B. External tables
- C. Secure User-Defined Functions (UDFs)
- D. Sequences
- E. Streams

Answer: BC

NEW QUESTION 483

- (Exam Topic 3)

Which command sets the Virtual Warehouse for a session?

- A. COPY WAREHOUSE FROM <<config file>>;
- B. SET WAREHOUSE = <<warehouse name>>;
- C. USE WAREHOUSE <<warehouse name>>;
- D. USE VIRTUAL_WAREHOUSE <<warehouse name>>;

Answer: C

Explanation:

Reference: <https://docs.snowflake.com/en/user-guide/warehouses-tasks.html>

NEW QUESTION 484

- (Exam Topic 3)

Which URL type allows users to access unstructured data without authenticating into Snowflake or passing an authorization token?

- A. Pre-signed URL
- B. Scoped URL
- C. Signed URL
- D. File URL

Answer: C

NEW QUESTION 489

- (Exam Topic 3)

What happens to historical data when the retention period for an object ends?

- A. The data is cloned into a historical object.
- B. The data moves to Fail-safe
- C. Time Travel on the historical data is dropped.
- D. The object containing the historical data is dropped.

Answer: D

NEW QUESTION 491

- (Exam Topic 3)

What occurs when a pipe is recreated using the CREATE OR REPLACE PIPE command?

- A. The Pipe load history is reset to empty.
- B. The REFRESH command is executed.
- C. The stage will be purged.
- D. The destination table is truncated.

Answer: B

NEW QUESTION 493

- (Exam Topic 3)

What is the maximum total Continuous Data Protection (CDP) charges incurred for a temporary table?

- A. 30 days
- B. 7 days
- C. 48 hours
- D. 24 hours

Answer: D

NEW QUESTION 498

- (Exam Topic 3)

A table needs to be loaded. The input data is in JSON format and is a concatenation of multiple JSON documents. The file size is 3 GB. A warehouse size small is being used. The following COPY INTO command was executed:

```
COPY INTO SAMPLE FROM @~/SAMPLE.JSON (TYPE=JSON)
```

The load failed with this error:

Max LOB size (16777216) exceeded, actual size of parsed column is 17894470. How can this issue be resolved?

- A. Compress the file and load the compressed file.
- B. Split the file into multiple files in the recommended size range (100 MB - 250 MB).
- C. Use a larger-sized warehouse.
- D. Set STRIP_OUTER_ARRAY=TRUE in the COPY INTO command.

Answer: A

NEW QUESTION 501

- (Exam Topic 3)

Which formats does Snowflake store unstructured data in? (Choose two.)

- A. GeoJSON
- B. Array
- C. XML
- D. Object
- E. BLOB

Answer: DE

NEW QUESTION 503

- (Exam Topic 3)

Which commands should be used to grant the privilege allowing a role to select data from all current tables and any tables that will be created later in a schema? (Choose two.)

- A. grant USAGE on all tables in schema DB1.SCHEMA to role MYROLE;
- B. grant USAGE on future tables in schema DB1.SCHEMA to role MYROLE;
- C. grant SELECT on all tables in schema DB1.SCHEMA to role MYROLE;
- D. grant SELECT on future tables in schema DB1.SCHEMA to role MYROLE;
- E. grant SELECT on all tables in database DB1 to role MYROLE;
- F. grant SELECT on future tables in database DB1 to role MYROLE;

Answer: CD

NEW QUESTION 505

- (Exam Topic 3)

What are the correct parameters for time travel and fail-safe in the Snowflake Enterprise Edition?

- A. Default Time Travel Retention is set to 0 days.Maximum Time Travel Retention is 30 day
- B. Fail Safe retention time is 1 day.
- C. Default Time Travel Retention is set to 1 day.Maximum Time Travel Retention is 365 day
- D. Fail Safe retention time is 7 days.
- E. Default Time Travel Retention is set to 0 days.Maximum Time Travel Retention is 90 day
- F. Fail Safe retention time is 7 days.
- G. Default Time Travel Retention is set to 1 day.Maximum Time Travel Retention is 90 day
- H. Fail Safe retention time is 7 days.
- I. Default Time Travel Retention is set to 7 days.Maximum Time Travel Retention is 1 da
- J. Fail Safe retention time is 90 days.
- K. Default Time Travel Retention is set to 90 days.Maximum Time Travel Retention is 7 day
- L. Fail Safe retention time is 356 days.

Answer: D

NEW QUESTION 508

- (Exam Topic 3)

When should a multi-cluster warehouse be used in auto-scaling mode?

- A. When it is unknown how much compute power is needed
- B. If the select statement contains a large number of temporary tables or Common Table Expressions (CTEs)
- C. If the runtime of the executed query is very slow
- D. When a large number of concurrent queries are run on the same warehouse

Answer: D

NEW QUESTION 511

- (Exam Topic 3)

Which snowflake objects will incur both storage and cloud compute charges? (Select TWO)

- A. Materialized view
- B. Sequence
- C. Secure view
- D. Transient table
- E. Clustered table

Answer: DE

NEW QUESTION 516

- (Exam Topic 3)

Which of the following statements apply to Snowflake in terms of security? (Choose two.)

- A. Snowflake leverages a Role-Based Access Control (RBAC) model.
- B. Snowflake requires a user to configure an IAM user to connect to the database.
- C. All data in Snowflake is encrypted.
- D. Snowflake can run within a user's own Virtual Private Cloud (VPC).
- E. All data in Snowflake is compressed.

Answer: AD

NEW QUESTION 519

- (Exam Topic 3)

What file formats does Snowflake support for loading semi-structured data? (Choose three.)

- A. TSV
- B. JSON
- C. PDF
- D. Avro
- E. Parquet
- F. JPEG

Answer: BDE

NEW QUESTION 523

- (Exam Topic 3)

What types of data listings are available in the Snowflake Data Marketplace? (Choose two.)

- A. Reader
- B. Consumer
- C. Vendor
- D. Standard
- E. Personalized

Answer: DE

NEW QUESTION 527

- (Exam Topic 3)

Which of the following statements describes a schema in Snowflake?

- A. A logical grouping of objects that belongs to a single database
- B. A logical grouping of objects that belongs to multiple databases
- C. A named Snowflake object that includes all the information required to share a database
- D. A uniquely identified Snowflake account within a business entity

Answer: A

NEW QUESTION 532

- (Exam Topic 3)

How does Snowflake allow a data provider with an Azure account in central Canada to share data with a data consumer on AWS in Australia?

- A. The data provider in Azure Central Canada can create a direct share to AWS Asia Pacific, if they are both in the same organization.
- B. The data consumer and data provider can form a Data Exchange within the same organization to create a share from Azure Central Canada to AWS Asia Pacific.
- C. The data provider uses the GET DATA workflow in the Snowflake Data Marketplace to create a share between Azure Central Canada and AWS Asia Pacific.
- D. The data provider must replicate the database to a secondary account in AWS Asia Pacific within the same organization then create a share to the data consumer's account.

Answer: C

NEW QUESTION 534

- (Exam Topic 3)

What features that are part of the Continuous Data Protection (CDP) feature set in Snowflake do not require additional configuration? (Choose two.)

- A. Row level access policies
- B. Data masking policies
- C. Data encryption
- D. Time Travel
- E. External tokenization

Answer: CD

NEW QUESTION 539

- (Exam Topic 3)

Which of the following describes the Snowflake Cloud Services layer?

- A. Coordinates activities in the Snowflake account
- B. Executes queries submitted by the Snowflake account users
- C. Manages quotas on the Snowflake account storage
- D. Manages the virtual warehouse cache to speed up queries

Answer: A

NEW QUESTION 541

- (Exam Topic 3)

Data storage for individual tables can be monitored using which commands and/or objects? (Choose two.)

- A. SHOW STORAGE BY TABLE;
- B. SHOW TABLES;
- C. Information Schema -> TABLE_HISTORY
- D. Information Schema -> TABLE_FUNCTION
- E. Information Schema -> TABLE_STORAGE_METRICS

Answer: AE

NEW QUESTION 546

- (Exam Topic 3)

Which of the following describes a Snowflake stored procedure?

- A. They can be created as secure and hide the underlying metadata from the user.
- B. They can only access tables from a single database.
- C. They can contain only a single SQL statement.
- D. They can be created to run with a caller's rights or an owner's rights.

Answer: A

Explanation:

Reference: <https://docs.snowflake.com/en/sql-reference/stored-procedures-overview.html>

NEW QUESTION 548

.....

Thank You for Trying Our Product

We offer two products:

1st - We have Practice Tests Software with Actual Exam Questions

2nd - Questons and Answers in PDF Format

SnowPro-Core Practice Exam Features:

- * SnowPro-Core Questions and Answers Updated Frequently
- * SnowPro-Core Practice Questions Verified by Expert Senior Certified Staff
- * SnowPro-Core Most Realistic Questions that Guarantee you a Pass on Your FirstTry
- * SnowPro-Core Practice Test Questions in Multiple Choice Formats and Updatesfor 1 Year

100% Actual & Verified — Instant Download, Please Click
[Order The SnowPro-Core Practice Test Here](#)