

# Cisco

## Exam Questions 300-420

Designing Cisco Enterprise Networks (ENSLD)



#### NEW QUESTION 1

An engineer is working for a large cable TV provider that requires multiple sources streaming video on different channels using multicast with no rendezvous point. Which multicast protocol meets these requirements?

- A. PIM-SM
- B. PIM-SSM
- C. any-source multicast
- D. BIDIR-PIM

**Answer: D**

#### NEW QUESTION 2

Which control-plane technology allows the same subnet to exist across multiple network locations?

- A. LISP
- B. VXLAN
- C. FabricPath
- D. ISE mobility services

**Answer: B**

#### NEW QUESTION 3

What are two valid scaling techniques when an EIGRP network is designed that consists of more than 1000 routers? (Choose two.)

- A. Use structured hierarchical topology with route summarization
- B. Used sub-second timers
- C. Use the distribute-list command to filter routes
- D. Modify delay parameters on the links
- E. Implement multiple EIGRP autonomous systems

**Answer: AE**

#### NEW QUESTION 4

What is an advantage of designing an out-of-band network management solution?

- A. In the event of a production network outage, network devices can still be managed.
- B. There is no separation between the production network and the management network.
- C. In the event of a production network outage, it can be used as a backup network path.
- D. It is less expensive than an in-band management solution

**Answer: A**

#### NEW QUESTION 5

What is a benefit of using VRRPv3 as compared to VRRPv2?

- A. VRRPv3 supports IPv4 and IPv6
- B. VRRPv3 supports authentication
- C. VRRPv3 supports preemption
- D. VRRPv3 supports stateful switchover

**Answer: A**

#### NEW QUESTION 6

An enterprise customer has these requirements:

- end-to-end QoS for the business-critical applications and VoIP services based on CoS marking.
- flexibility to offer services such as IPv6 and multicast without any reliance on the service provider.
- support for full-mesh connectivity at Layer 2.

Which WAN connectivity option meets these requirements?

- A. VPWS
- B. MPLS VPN
- C. DMVPN
- D. VPLS

**Answer: D**

#### NEW QUESTION 7

What is one function of the vSmart controller in an SD-WAN deployment?

- A. orchestrates vEdge and cEdge connectivity
- B. responsible for the centralized control plane of the SD-WAN network
- C. provides centralized network management and a GUI to monitor and operate the SD-WAN overlay
- D. provides a data-plane at branch offices to pass traffic through the SD-WAN network

**Answer:** B

#### NEW QUESTION 8

Which solution allows overlay VNs to communicate with each other in an SD-WAN Architecture?

- A. External fusion routers can be used to map VNs to VRFs and selectively route traffic between VRFs.
- B. GRE tunneling can be configured between fabric edges to connect one VN to another.
- C. SGTs can be used to permit traffic from one VN to another.
- D. Route leaking can be used on the fabric border nodes to inject routes from one VN to another.

**Answer:** B

#### NEW QUESTION 9

A branch office has a primary L3VPN MPLS connection back to the main office and an IPSEC VPN tunnel that serves as backup. Which design ensures that data is sent over the backup connection only if the primary MPLS circuit is down?

- A. Use EIGRP to establish a neighbor relationship with the main office via L3VPN MPLS and the IPSECVPN tunnel.
- B. Use BGP with the multipath feature enabled to force traffic via the primary path when available.
- C. Use static routes tied to an IP SLA to prefer the primary path while a floating static route points to the backup connection.
- D. Use OSPF with a passive-interface command on the backup connection.

**Answer:** C

#### NEW QUESTION 10

An engineer must propose a QoS architecture model that allows an application to inform the network of its traffic profile and to request a particular type of service to support its bandwidth and delay requirements. The application requires consistent and dedicated bandwidth end to end. Which QoS architecture model meets these requirements?

- A. DiffServ
- B. LLQ
- C. WRED
- D. IntServ

**Answer:** D

#### NEW QUESTION 10

A network engineer must connect two sites across a public network using a secure tunneling technology that supports multicast traffic. Which technology must be chosen?

- A. IPsec
- B. GRE
- C. PPTP
- D. GRE over IPsec

**Answer:** D

#### NEW QUESTION 15

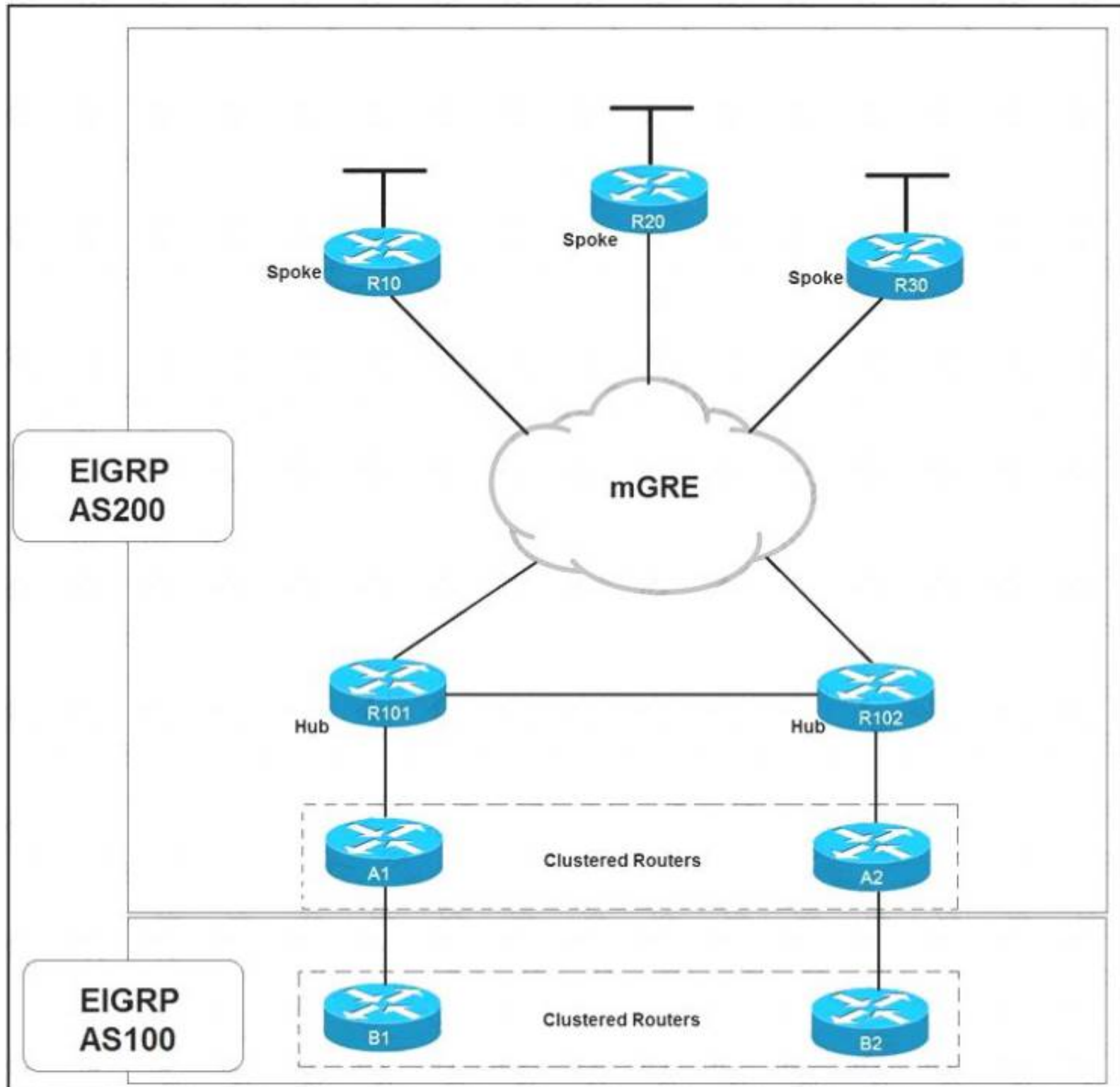
Which nonproprietary mechanism can be used to automate rendezvous point distribution in a large PIM domain?

- A. Embedded RP
- B. BSR
- C. Auto-RP
- D. Static RP

**Answer:** B

#### NEW QUESTION 17

Refer to the exhibit.



Which solution decreases the EIGRP convergence time?

- A. Enable subsecond timers
- B. Increase the hold time value
- C. Increase the dead timer value
- D. Enable stub routing on the spokes

**Answer: D**

#### NEW QUESTION 20

Which feature must be incorporated into the campus LAN design to enable Wake on LAN?

- A. dynamic ARP Inspection Snooping on layer 2 devices
- B. directed broadcasts on layer 3 devices
- C. proxy ARP on layer 3 devices
- D. DHCP Snooping on layer 2 devices

**Answer: B**

#### NEW QUESTION 22

Which function are fabric intermediate nodes responsible for in an SD-Access Architecture?

- A. mapping EIDs to RLOCs
- B. encapsulating user traffic in a VXLAN header including the SGT
- C. registering new endpoints in the HTDB
- D. transporting IP packets between edge nodes and border nodes

**Answer: D**

#### NEW QUESTION 23

Which two routing protocols allow for unequal cost load balancing? (Choose two.)

- A. EIGRP
- B. IS-IS
- C. BGP

- D. OSPF
- E. RIPv6

**Answer:** AC

#### NEW QUESTION 28

Which feature is required for graceful restart to recover from a processor failure?

- A. Cisco Express Forwarding
- B. Virtual Switch System
- C. Stateful Switchover
- D. Bidirectional Forwarding Detection

**Answer:** A

#### NEW QUESTION 29

When IPsec VPNs are designed, what is a unique requirement if support for IP Multicast is required?

- A. encapsulation of traffic with GRE or VTI
- B. IPsec forwarding using transport mode
- C. additional bandwidth for headend
- D. IPsec forwarding using tunnel mode

**Answer:** A

#### NEW QUESTION 32

An infrastructure team is concerned about the shared memory utilization of a device, and for this reason, they need to monitor the device state. Which solution limits impact on the device and provides the required data?

- A. IPFIX
- B. static telemetry
- C. on-change subscription
- D. periodic subscription

**Answer:** A

#### NEW QUESTION 36

Which routes does the overlay management protocol advertise in an SD-WAN overlay?

- A. underlay, MPLS, and overlay
- B. primary, backup, and load-balanced
- C. prefix, TLOC, and service
- D. Internet, MPLS, and backup

**Answer:** C

#### NEW QUESTION 38

Which design consideration must be made when using IPv6 overlay tunnels?

- A. Overlay tunnels that connect isolated IPv6 networks can be considered a final IPv6 network architecture.
- B. Overlay tunnels should only be considered as a transition technique toward a permanent solution.
- C. Overlay tunnels can be configured only between border devices and require only the IPv6 protocol stack.
- D. Overlay tunneling encapsulates IPv4 packets in IPv6 packets for delivery across an IPv6 infrastructure.

**Answer:** C

#### NEW QUESTION 39

How do endpoints inside an SD-Access network reach resources outside the fabric?

- A. a VRF fusion router is used to map resources in one VN to another VN
- B. Fabric borders use VRFs to map VNs to VRFs
- C. SD-Access transit links are used to transport encapsulated traffic from one fabric to another
- D. A fabric edge is used to de-encapsulate VXLAN traffic to normal IP traffic then transported over the outside network

**Answer:** D

#### NEW QUESTION 41

Which consideration must be taken into account when using the DHCP relay feature in a Cisco SD-Access Architecture?

- A. DHCP-relay must be enabled on fabric edge nodes to provide the correct mapping of DHCP scope to the local anycast gateway.
- B. A DHCP server must be enabled on the border nodes to allow subnets to span multiple fabric edges.
- C. DHCP servers must support Cisco SD-Access extensions to correctly assign IPs to endpoints in an SDAccess fabric with anycast gateway.
- D. DHCP Option-82 must be enabled to map the circuit ID option to the access fabric node where the DHCP discover originated.

**Answer:** A

NEW QUESTION 43

A network solution is being designed for a company that connects to multiple Internet service providers. Which Cisco proprietary BGP path attribute will influence outbound traffic flow?

- A. Local Preference
- B. MED
- C. Weight
- D. AS Path
- E. Community

Answer: C

NEW QUESTION 45

Which NETCONF operation creates filtering that is specific to the session notifications?

- A. <create-subscription>
- B. <commit>
- C. <notification>
- D. <logging>

Answer: A

NEW QUESTION 50

Drag and drop the characteristics from the left onto the correct telemetry mode on the right.

The collector initiates a session to the device

supports TCP, UDP, and gRPC

The device initiates a session to the collector

supports gRPC only

Dial-In

Dial-Out

- A. Mastered
- B. Not Mastered

Answer: A

Explanation:

In a dial-in mode, the destination initiates a session to the router and subscribes to data to be streamed. Dialin mode is supported over gRPC in only 64-bit platforms  
In a dial-out mode, the router initiates a session to the destinations based on the subscription. All 64-bit IOS XR platforms (except for NCS 6000 series routers) support gRPC and TCP protocols. All 32-bit IOS XR platforms support only TCP.

NEW QUESTION 51

.....

## Thank You for Trying Our Product

### We offer two products:

1st - We have Practice Tests Software with Actual Exam Questions

2nd - Questions and Answers in PDF Format

### 300-420 Practice Exam Features:

- \* 300-420 Questions and Answers Updated Frequently
- \* 300-420 Practice Questions Verified by Expert Senior Certified Staff
- \* 300-420 Most Realistic Questions that Guarantee you a Pass on Your First Try
- \* 300-420 Practice Test Questions in Multiple Choice Formats and Updates for 1 Year

**100% Actual & Verified — Instant Download, Please Click**  
**[Order The 300-420 Practice Test Here](#)**