

Microsoft

Exam Questions AZ-801

Configuring Windows Server Hybrid Advanced Services



NEW QUESTION 1

DRAG DROP

You are planning the implementation of Cluster2 to support the on-premises migration plan.

You need to ensure that the disks on Cluster2 meet the security requirements.

In which order should you perform the actions? To answer, move all actions from the list of actions to the answer area and arrange them in the correct order.

Select and Place:

Actions	Answer Area
Add a disk resource to the cluster.	
Enable BitLocker on the volume.	
Update the BitLockerProtectorInfo property of the volume.	
Create a Cluster Shared Volume (CSV).	
Put the disk in maintenance mode.	

- A. Mastered
- B. Not Mastered

Answer: A

Explanation:

Reference: <https://docs.microsoft.com/en-us/windows-server/failover-clustering/bitlocker-on-csv-in-ws-2022>

NEW QUESTION 2

HOTSPOT

You need to configure BitLocker on Server4.

On which volumes can you turn on BitLocker, and on which volumes can you turn on auto-unlock? To answer, select the appropriate options in the answer area.

NOTE: Each correct selection is worth one point.

Hot Area:

Answer Area

BitLocker:

D only

C and D only

D, E, and F only

C, D, E, and F

Auto-unlock:

D only

C and D only

D, E, and F only

C, D, E, and F

- A. Mastered
- B. Not Mastered

Answer: A

Explanation:

Reference: <https://docs.microsoft.com/en-us/windows-server/storage/refs/refs-overview>

<https://docs.microsoft.com/enus/powershell/module/bitlocker/enable-bitlockerautounlock?view=windowsserver2022-ps>

NEW QUESTION 3

HOTSPOT

For each of the following statements, select Yes if the statement is true. Otherwise, select No.

NOTE: Each correct selection is worth one point.

Hot Area:

Answer Area

Statements	Yes	No
User1 can sign in to Server4 by using Remote Desktop.	<input type="radio"/>	<input type="radio"/>
User2 can sign in to Server4 by using Remote Desktop.	<input type="radio"/>	<input type="radio"/>
User3 can sign in to Server4 by using Remote Desktop.	<input type="radio"/>	<input type="radio"/>

- A. Mastered
B. Not Mastered

Answer: A

Explanation:
Answer Area

Statements	Yes	No
User1 can sign in to Server4 by using Remote Desktop.	<input type="radio"/>	<input checked="" type="radio"/>
User2 can sign in to Server4 by using Remote Desktop.	<input checked="" type="radio"/>	<input type="radio"/>
User3 can sign in to Server4 by using Remote Desktop.	<input type="radio"/>	<input checked="" type="radio"/>

NEW QUESTION 4

HOTSPOT

You are planning the migration of APP3 and APP4 to support the Azure migration plan.

What should you do on Cluster1 and in Azure before you perform the migration? To answer, select the appropriate options in the answer area.

NOTE: Each correct selection is worth one point.

Hot Area:

Answer Area

On Cluster1:

- Configure Azure Network Adapter.
- Create a Point-to-Site (P2S) VPN connection to Vnet1.
- Import the Azure Migrate appliance.
- Install the Azure File Sync agent.
- Install the Windows Server Migration Tools.

In Azure:

- Create a premium block blobs Azure Storage account.
- Create a private endpoint.
- Create a VPN gateway.
- Create an Azure Migrate project.

- A. Mastered
B. Not Mastered

Answer: A

Explanation:
Reference:
<https://docs.microsoft.com/en-us/azure/migrate/tutorial-discover-hyper-v>

NEW QUESTION 5

You need to meet the technical requirements for User1.

To which group in contoso.com should you add User1?

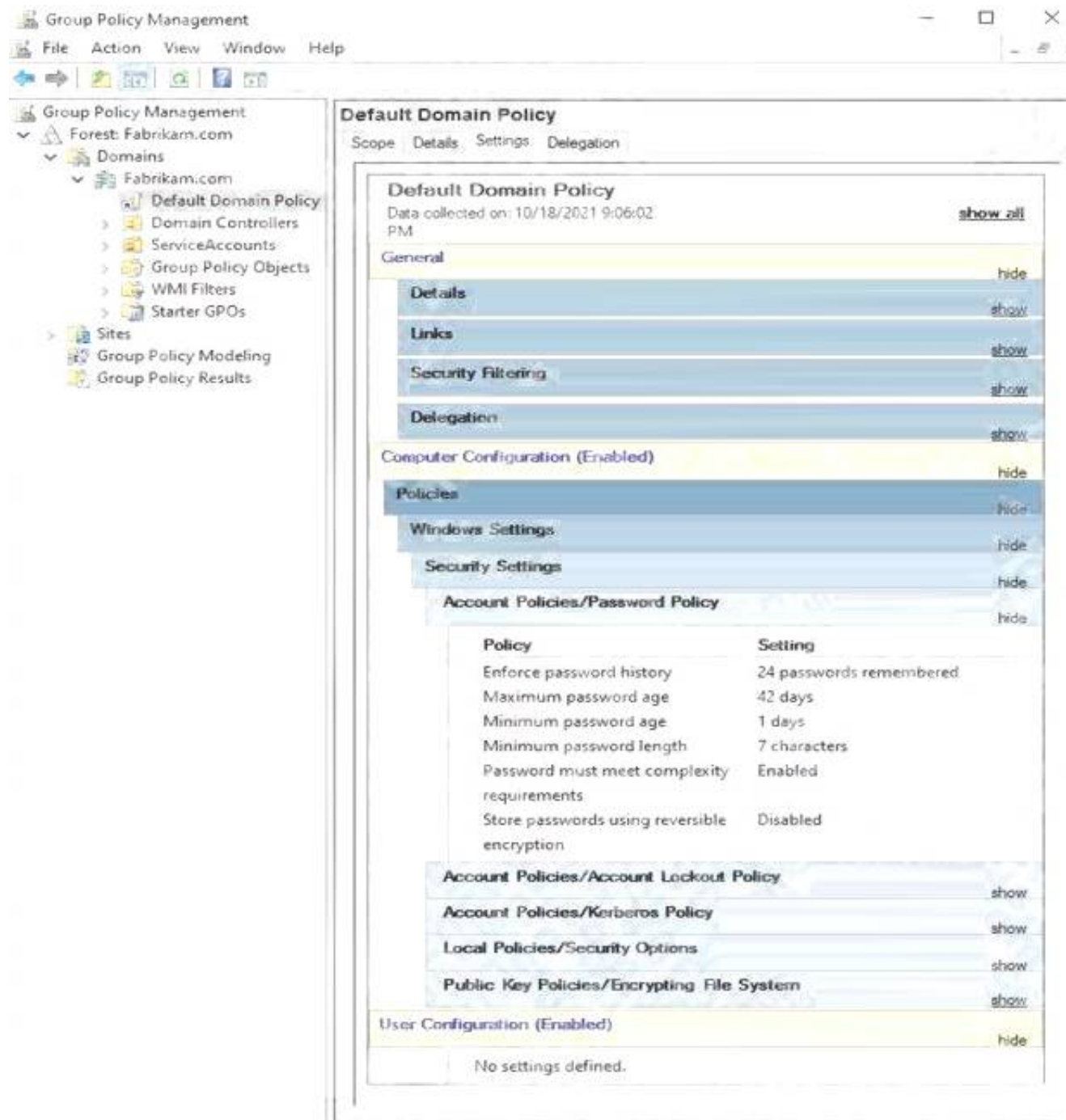
- A. Domain Admins
B. Account Operators
C. Schema Admins
D. Backup Operators

Answer: A

NEW QUESTION 6

HOTSPOT

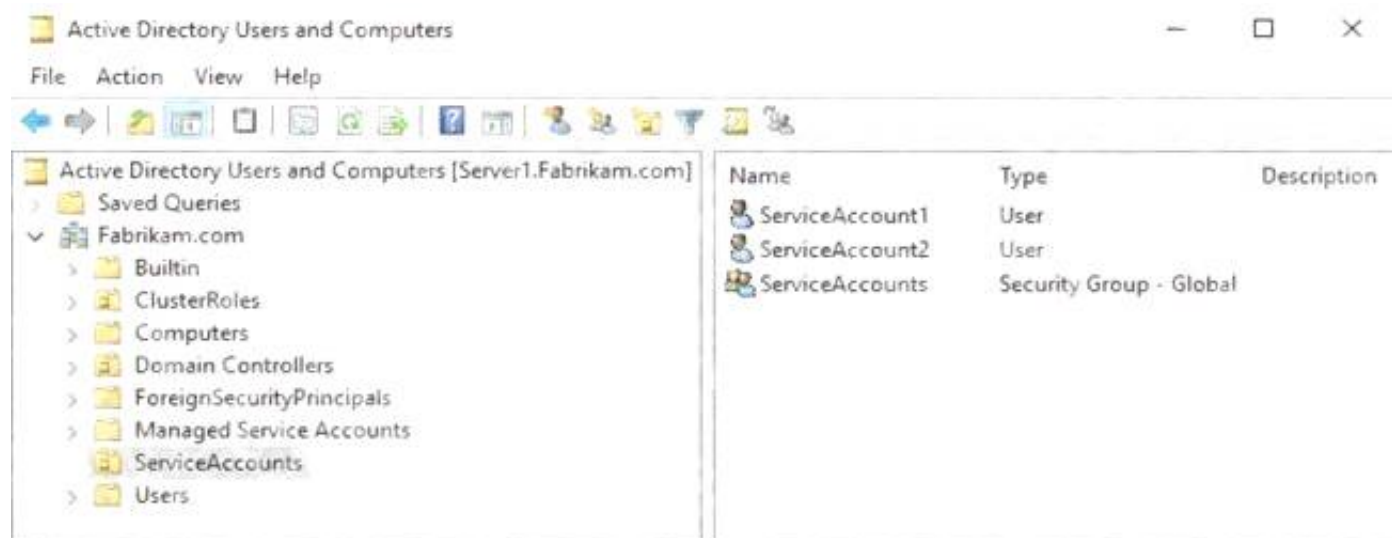
The Default Domain Policy Group Policy Object (GPO) is shown in the GPO exhibit. (Click the GPO tab.)



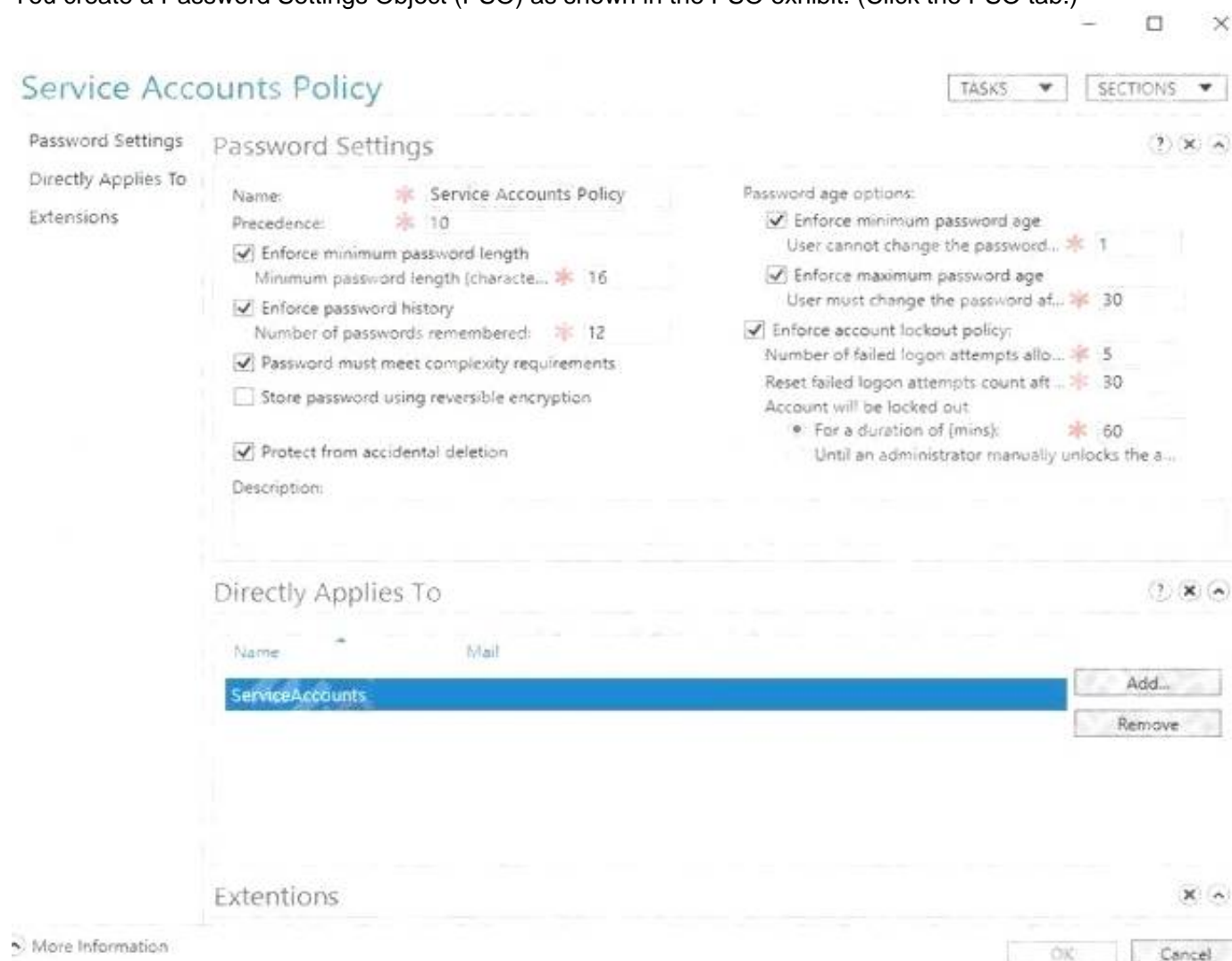
The members of a group named Service Accounts are shown in the Group exhibit. (Click the Group tab.)



An organizational unit (OU) named ServiceAccounts is shown in the OU exhibit. (Click the OU tab.)



You create a Password Settings Object (PSO) as shown in the PSO exhibit. (Click the PSO tab.)



For each of the following statements, select Yes if the statement is true. Otherwise, select No.

NOTE: Each correct selection is worth one point.

Hot Area:

Answer Area

Statements	Yes	No
The password of ServiceAccount1 must be at least 16 characters long.	<input type="radio"/>	<input type="radio"/>
The password of ServiceAccount2 must be at least 16 characters long.	<input type="radio"/>	<input type="radio"/>
Accounts that have the Service Accounts Policy applied can change their password to P@\$\$w0rd1.	<input type="radio"/>	<input type="radio"/>

- A. Mastered
- B. Not Mastered

Answer: A

Explanation:

Reference: https://docs.microsoft.com/en-us/windows-server/identity/ad-ds/get-started/adac/introduction-to-active-directoryadministrativecenterenhancements--level-100-#fine_grained_pswd_policy_mgmt

NEW QUESTION 7

DRAG DROP

Your network contains an Active Directory Domain Services (AD DS) domain.

You need to implement a solution that meets the following requirements:

Ensures that the members of the Domain Admins group are allowed to sign in only to domain controllers Ensures that the lifetime of Kerberos

Ticket Granting Ticket (TGT) for the members of the Domain Admins group is limited to one hour Which three actions should you perform in sequence? To answer, move the appropriate actions from the list of actions to the answer area and arrange them in the correct order.

Select and Place:

Actions	Answer Area
Create a Dynamic Access Control central access policy.	
Configure the Kerberos Policy settings for the Default Domain Policy Group Policy Object (GPO).	
Create a Dynamic Access Control claim type.	
Create an authentication policy.	
Assign the authentication policy silo to user and computer accounts.	
Create an authentication policy silo.	

- A. Mastered
- B. Not Mastered

Answer: A

Explanation:

Reference: <https://docs.microsoft.com/en-us/windows-server/identity/ad-ds/manage/how-to-configure-protected-accounts>

NEW QUESTION 8

You have an Azure subscription that has Microsoft Defender for Cloud enabled.
You have 50 Azure virtual machines that run Windows Server.
You need to ensure that any security exploits detected on the virtual machines are forwarded to Defender for Cloud.
Which extension should you enable on the virtual machines?

- A. Vulnerability assessment for machines
- B. Microsoft Dependency agent
- C. Log Analytics agent for Azure VMs
- D. Guest Configuration agent

Answer: A

Explanation:

Reference: <https://docs.microsoft.com/en-us/azure/defender-for-cloud/deploy-vulnerability-assessment-vm>

NEW QUESTION 9

You have an Azure virtual machine named VM1 that runs Windows Server.
You need to encrypt the contents of the disks on VM1 by using Azure Disk Encryption.
What is a prerequisite for implementing Azure Disk Encryption?

- A. Customer Lockbox for Microsoft Azure
- B. an Azure key vault
- C. a BitLocker recovery key
- D. data-link layer encryption in Azure

Answer: B

Explanation:

Reference: <https://docs.microsoft.com/en-us/azure/virtual-machines/windows/disk-encryption-overview>

NEW QUESTION 10

You have an Azure virtual machine named VM1.
You enable Microsoft Defender SmartScreen on VM1.
You need to ensure that the SmartScreen messages displayed to users are logged.
What should you do?

- A. From a command prompt, run WinRM quickconfig.
- B. From the local Group Policy, modify the Advanced Audit Policy Configuration settings.
- C. From Event Viewer, enable the Debug log.
- D. From the Windows Security app, configure the Virus & threat protection settings.

Answer: C

Explanation:

Reference: <https://docs.microsoft.com/en-us/windows/security/threat-protection/microsoft-defender-smartscreen/microsoftdefendersmartscreenoverview>

NEW QUESTION 10

You are planning the migration of Archive1 to support the on-premises migration plan.
What is the minimum number of IP addresses required for the node and cluster roles on Cluster3?

- A. 2
- B. 3
- C. 4
- D. 5

Answer: B

Explanation:

One IP for each of the two nodes in the cluster and one IP for the cluster virtual IP (VIP).

NEW QUESTION 13

HOTSPOT

You have a failover cluster named Cluster1 that contains three nodes.

You plan to add two file server cluster roles named File1 and File2 to Cluster1. File1 will use the File Server for general use role. File2 will use the Scale-Out File Server for application data role.

What is the maximum number of nodes for File1 and File2 that can concurrently serve client connections? To answer, select the appropriate options in the answer area.

NOTE: Each correct selection is worth one point.

Hot Area:

Answer Area

File1:	<div><div></div><div>1</div><div>2</div><div>3</div></div>
File2:	<div><div></div><div>1</div><div>2</div><div>3</div></div>

- A. Mastered
- B. Not Mastered

Answer: A

Explanation:

Reference:

<https://docs.microsoft.com/en-us/windows-server/failover-clustering/sofs-overview>

NEW QUESTION 16

DRAG DROP

You have two physical servers named AppSrv1 and AppSrv2 and an unconfigured server named Server1. All the servers run Windows Server.

Only Server1 can access the internet.

You plan to use Azure Site Recovery to replicate AppSrv1 and AppSrv2 to Azure.

You need to deploy the required components to AppSrv1, AppSrv2, and Server1.

Which components should you deploy? To answer, drag the appropriate components to the correct servers. Each component may be used once, more than once, or not at all. You may need to drag the split bar between panes or scroll to view content.

NOTE: Each correct selection is worth one point.

Select and Place:

Components

The Azure Connected Machine agent
An Azure Site Recovery configuration server
The Azure Site Recovery Mobility Service
The Microsoft Azure Recovery Services (MARS) agent

Answer Area

To AppSrv1 and AppSrv2:

To Server1:

<div><div></div><div>1. The Azure Connected Machine agent</div></div>
<div><div></div><div>2. The Azure Site Recovery Mobility Service</div></div>
<div><div></div><div>3. The Microsoft Azure Recovery Services (MARS) agent</div></div>

- A. Mastered
- B. Not Mastered

Answer: A

Explanation:

Reference: <https://docs.microsoft.com/en-us/azure/site-recovery/physical-azure-architecture>

<https://docs.microsoft.com/enus/azure/siterecovery/physical-azure-set-up-source>

NEW QUESTION 18

DRAG DROP

You have two Azure virtual machines named VM1 and VM2. VM1 is backed up to an Azure Recovery Services vault daily and retains backups for 30 days.

You need to restore an individual file named C:\Data\Important.docx from VM1 to VM2. The solution must minimize administrative effort.

Which four actions should you perform in sequence? To answer, move the appropriate actions from the list of actions to the answer area and arrange them in the correct order.

Select and Place:

Actions
Unmount the disks.
Download the file recovery script for VM1.
Copy the file by using Azure Storage Explorer.
Copy the file by using File Explorer.
Restore the file by using Windows Server Backup.
Run the file recovery script on VM2.

Answer Area

- A. Mastered
B. Not Mastered

Answer: A

Explanation:
Reference: <https://docs.microsoft.com/en-us/azure/backup/backup-azure-restore-files-from-vm>

NEW QUESTION 21
DRAG DROP

Your network contains an Active Directory Domain Services (AD DS) domain that has the Active Directory Recycle Bin enabled. The domain contains two domain controllers named DC1 and DC2. The system state of the domain controllers is backed up daily at 23:00 by using Windows Server Backup. You have an organizational unit (OU) named ParisUsers that contains 1,000 users. At 08:00, DC1 shuts down for hardware maintenance. The maintenance completes, but DC1 remains shut down. At 09:00, an administrative error causes the manager attribute of each user in ParisUsers to be deleted. You need to recover the user account details as quickly as possible. The solution must minimize data loss. Which three actions should you perform in sequence? To answer, move the appropriate actions from the list of actions to the answer area and arrange them in the correct order.

Select and Place:

Actions
Start DC1 normally.
Perform an authoritative restore on DC1.
Recover all the user objects in the Active Directory Recycle Bin.
Start DC1 by using the Last Known Good Configuration.
Start DC1 in Directory Services Restore Mode.
Perform a system state restore on DC1.

Answer Area

- A. Mastered
B. Not Mastered

Answer: A

Explanation:

Actions
Start DC1 normally.
Recover all the user objects in the Active Directory Recycle Bin.
Start DC1 by using the Last Known Good Configuration.

Answer Area
Start DC1 in Directory Services Restore Mode.
Perform a system state restore on DC1.
Perform an authoritative restore on DC1.

NEW QUESTION 23

You have 200 Azure virtual machines. You create a recovery plan in Azure Site Recovery to fail over all the virtual machines to an Azure region. The plan has three manual actions. You need to replace one of the manual actions with an automated process. What should you use?

- A. an Azure Desired State Configuration (DSC) virtual machine extension
B. an Azure Automation runbook
C. an Azure PowerShell function
D. a Custom Script Extension on the virtual machines

Answer: B

Explanation:

Reference:
<https://docs.microsoft.com/en-us/azure/site-recovery/recovery-plan-overview>

NEW QUESTION 24

You need to meet technical requirements for Share1.
What should you use?

- A. Storage Migration Service
- B. File Server Resource Manager (FSRM)
- C. Server Manager
- D. Storage Replica

Answer: A

Explanation:

Reference: <https://docs.microsoft.com/en-us/windows-server/storage/storage-migration-service/overview>

NEW QUESTION 26

You have two file servers named Server1 and Server2 that run Windows Server. Server1 contains a shared folder named Data. Data contains 10TB of data. You plan to decommission Server1.
You need to migrate the files from Data to a new shared folder on Server2. The solution must meet the following requirements:
Ensure that share, file, and folder permissions are copied.
After the initial copy occurs, ensure that changes in \\Server1\Data can be synced to the destination without initiating a full copy. Minimize administrative effort.
What should you use?

- A. xcopy
- B. Storage Replica
- C. Storage Migration Service
- D. azcopy

Answer: C

Explanation:

Reference: <https://docs.microsoft.com/en-us/windows-server/storage/storage-migration-service/overview#why-use-storagemigration-service>

NEW QUESTION 31

HOTSPOT

You have a server that runs Windows Server and has the Web Server (IIS) server role installed. Server1 hosts a single website that has the following configurations:
Is accessible by using a URL of <https://www.contoso.com:8443> and has an SSL certificate that was issued by a third-party certification authority (CA) in the Microsoft Trusted Root Program
Uses anonymous authentication
Was developed by using PHP
You plan to use APP Service Migration Assistant to migrate the website to Azure App Service.
You need to migrate the website. The solution must minimize the number of changes made to the existing website.
What should you do manually to ensure that the website migration is successful? To answer, select the appropriate options in the answer area.
NOTE: Each correct selection is worth one point.
Hot Area:

Answer Area

On Server1:	<div><div></div><div>Change the authentication method.</div><div>Change the listening port of the website.</div><div>Redevelop the website code by using ASP.NET.</div></div>
In Azure:	<div><div></div><div>Create an App Service plan.</div><div>Copy the source files of the website.</div><div>Configure a certificate and a custom domain name.</div></div>

- A. Mastered
- B. Not Mastered

Answer: A

Explanation:

Reference:
<https://docs.microsoft.com/en-us/learn/modules/migrate-app-service-migration-assistant/3-understand-assessment>
<https://docs.microsoft.com/en-us/learn/modules/migrate-app-service-migration-assistant/5-understand-migration>

NEW QUESTION 32

Note: This question is part of a series of questions that present the same scenario. Each question in the series contains a unique solution that might meet the stated goals. Some question sets might have more than one correct solution, while others might not have a correct solution.

After you answer a question in this section, you will NOT be able to return to it. As a result, these questions will not appear in the review screen.

Your network contains a single-domain Active Directory Domain Services (AD DS) forest named contoso.com. The functional level of the forest is Windows Server 2012 R2. All domain controllers run Windows Server 2012 R2.

Sysvol replicates by using the File Replication Service (FRS).

You plan to replace the existing domain controllers with new domain controllers that will run Windows Server 2022.

You need to ensure that you can add the first domain controller that runs Windows Server 2022.

Solution: You migrate sysvol from FRS to Distributed File System (DFS) Replication.

Does this meet the goal?

A. Yes

B. No

Answer: A

Explanation:

Reference:

<https://www.rebeladmin.com/2021/09/step-by-step-guide-active-directory-migration-from-windows-server-2008-r2-towindows-server-2022/>

NEW QUESTION 33

Note: This question is part of a series of questions that present the same scenario. Each question in the series contains a unique solution that might meet the stated goals. Some question sets might have more than one correct solution, while others might not have a correct solution.

After you answer a question in this section, you will NOT be able to return to it. As a result, these questions will not appear in the review screen.

Your network contains a single-domain Active Directory Domain Services (AD DS) forest named contoso.com. The functional level of the forest is Windows Server 2012 R2. All domain controllers run Windows Server 2012 R2.

Sysvol replicates by using the File Replication Service (FRS).

You plan to replace the existing domain controllers with new domain controllers that will run Windows Server 2022.

You need to ensure that you can add the first domain controller that runs Windows Server 2022.

Solution: You run the Active Directory Migration Tool (ADMT).

Does this meet the goal?

A. Yes

B. No

Answer: B

NEW QUESTION 34

.....

Thank You for Trying Our Product

We offer two products:

1st - We have Practice Tests Software with Actual Exam Questions

2nd - Questions and Answers in PDF Format

AZ-801 Practice Exam Features:

- * AZ-801 Questions and Answers Updated Frequently
- * AZ-801 Practice Questions Verified by Expert Senior Certified Staff
- * AZ-801 Most Realistic Questions that Guarantee you a Pass on Your FirstTry
- * AZ-801 Practice Test Questions in Multiple Choice Formats and Updatesfor 1 Year

100% Actual & Verified — Instant Download, Please Click
[Order The AZ-801 Practice Test Here](#)