



Microsoft

Exam Questions AZ-700

Designing and Implementing Microsoft Azure Networking Solutions

NEW QUESTION 1

- (Exam Topic 1)

You need to prepare Vnet1 for the deployment of an ExpressRoute gateway. The solution must meet the hybrid connectivity requirements and the business requirements.

Which three actions should you perform in sequence for Vnet1? To answer, move the appropriate actions from the list of actions to the answer area and arrange them in the correct order.

Actions

Create a VPN gateway by using the VPNGW1 SKU.

Assign a user-defined route to GatewaySubnet.

Set the subnet mask of GatewaySubnet to /27.

Delete VPNGW1.

Create a VPN gateway by using the Basic SKU.

Answer Area

>

<

- A. Mastered
- B. Not Mastered

Answer: A

Explanation:

Actions

Create a VPN gateway by using the VPNGW1 SKU.

Assign a user-defined route to GatewaySubnet.

Set the subnet mask of GatewaySubnet to /27.

Delete VPNGW1.

Create a VPN gateway by using the Basic SKU.

Answer Area

Set the subnet mask of GatewaySubnet to /27.

Assign a user-defined route to GatewaySubnet.

Create a VPN gateway by using the Basic SKU.

>

<

NEW QUESTION 2

- (Exam Topic 1)

You need to implement a P2S VPN for the users in the branch office. The solution must meet the hybrid networking requirements.

What should you do? To answer, select the appropriate options in the answer area. NOTE: Each correct selection is worth one point.

Answer Area

On the VPN gateway in Vnet1, set the P2S VPN tunnel type to:

IKEv2

OpenVPN (SSL)

SSTP (SSL)

In the litwareinc.com tenant:

Create a device object

Create a managed identity

Grant consent to an Azure AD application

- A. Mastered
- B. Not Mastered

Answer: A

Explanation:

Answer Area

On the VPN gateway in Vnet1, set the P2S VPN tunnel type to:

IKEv2

OpenVPN (SSL)

SSTP (SSL)

In the litwareinc.com tenant:

Create a device object

Create a managed identity

Grant consent to an Azure AD application

NEW QUESTION 3

- (Exam Topic 1)

You need to provide connectivity to storage1. The solution must meet the PaaS networking requirements and the business requirements. What should you include in the solution?

- A. a service endpoint
- B. Azure Front Door
- C. a private endpoint
- D. Azure Traffic Manager

Answer: A

NEW QUESTION 4

- (Exam Topic 1)

You need to recommend a configuration for the ExpressRoute connection from the Boston datacenter. The solution must meet the hybrid networking requirements and business requirements.

What should you recommend? To answer, select the appropriate options in the answer area. NOTE: Each correct selection is worth one point.

Answer Area

Set the ExpressRoute gateway type to:

High Performance (ERGW2AZ)
Standard Performance (ERGW1AZ)
Ultra Performance (ERGW3AZ)

To minimize latency of traffic to Vnet2:

Create a dedicated ExpressRoute circuit for Vnet2
Connect Vnet2 directly to the ExpressRoute circuit
Configure gateway transit for the peering between Vnet1 and Vnet2

- A. Mastered
- B. Not Mastered

Answer: A

Explanation:

For the first question, only ExpressRoute GW SKU Ultra Performance support FastPath feature.

For the second question, vnet1 will connect to ExpressRoute gw, once Vnet1 peers with Vnet2, the traffic from on-premise network will bypass GW and Vnet1, directly goes to Vnet2, while this feature is under public preview.

====Reference

ExpressRoute virtual network gateway is designed to exchange network routes and route network traffic. FastPath is designed to improve the data path performance between your on-premises network and your virtual network. When enabled, FastPath sends network traffic directly to virtual machines in the virtual network, bypassing the gateway.

To configure FastPath, the virtual network gateway must be either: Ultra Performance

ErGw3AZ

VNet Peering - FastPath will send traffic directly to any VM deployed in a virtual network peered to the one connected to ExpressRoute, bypassing the ExpressRoute virtual network gateway.

<https://docs.microsoft.com/en-us/azure/expressroute/about-fastpath> Gateway SKU

<https://docs.microsoft.com/en-us/azure/expressroute/expressroute-about-virtual-network-gateways>

NEW QUESTION 5

- (Exam Topic 1)

You need to connect Vnet2 and Vnet3. The solution must meet the virtual networking requirements and the business requirements.

Which two actions should you include in the solution? Each correct answer presents part of the solution.

- A. On the peerings from Vnet2 and Vnet3, select Use remote gateways.
- B. On the peering from Vnet1, select Allow forwarded traffic.
- C. On the peering from Vnet1, select Use remote gateways.
- D. On the peering from Vnet1, select Allow gateway transit.
- E. On the peerings from Vnet2 and Vnet3, select Allow gateway transit.

Answer: BD

NEW QUESTION 6

- (Exam Topic 2)

You need to configure GW1 to meet the network security requirements for the P2S VPN users. Which Tunnel type should you select in the Point-to-site configuration settings of GW1?

- A. IKEv2 and OpenVPN (SSL)
- B. IKEv2
- C. IKEv2 and SSTP (SSL)
- D. OpenVPN (SSL)
- E. SSTP (SSL)

Answer: D

Explanation:
Reference:
<https://docs.microsoft.com/en-us/azure/vpn-gateway/openvpn-azure-ad-tenant>

NEW QUESTION 7

- (Exam Topic 2)
You are implementing the Virtual network requirements for Vnet6.
What is the minimum number of subnets and service endpoints you should create? To answer, select the appropriate options in the answer area.
NOTE: Each correct selection is worth one point.

Answer Area

Subnets:

Service endpoints:

- A. Mastered
- B. Not Mastered

Answer: A

Explanation:
2, 4

NEW QUESTION 8

- (Exam Topic 2)
You are implementing the virtual network requirements for VM Analyze.
What should you include in a custom route that is linked to Subnet2? To answer, select the appropriate options in the answer area.
NOTE: Each correct selection is worth one point.

Address prefix:

▼
0.0.0.0/0
0.0.0.0/32
10.1.0.0/16
255.255.255.255/0
255.255.255.255/32

Next hop type:

▼
None
Internet
Virtual appliance
Virtual network
Virtual network gateway

- A. Mastered
- B. Not Mastered

Answer: A

Explanation:
Graphical user interface, text, application Description automatically generated
Reference:
<https://docs.microsoft.com/en-us/azure/virtual-network/virtual-networks-udr-overview>

NEW QUESTION 9

- (Exam Topic 3)
You have an Azure Front Door instance named FD1 that is protected by using Azure Web Application Firewall (WAF).
FD1 uses a frontend host named app1.contoso.com to provide access to Azure web apps hosted in the East US Azure region and the West US Azure region.
You need to configure FD1 to block requests to app1.contoso.com from all countries other than the United States.
What should you include in the WAF policy?

- A. a frontend host association
- B. a managed rule set
- C. a custom rule that uses a rate limit rule
- D. a custom rule that uses a match rule

Answer: C

NEW QUESTION 10

- (Exam Topic 3)

Your company has offices in Montreal, Seattle, and Paris. The outbound traffic from each office originates from a specific public IP address.

You create an Azure Front Door instance named FD1 that has Azure Web Application Firewall (WAF) enabled. You configure a WAF policy named Policy1 that has a rule named Rule1. Rule1 applies a rate limit of 100 requests for traffic that originates from the office in Montreal.

You need to apply a rate limit of 100 requests for traffic that originates from each office. What should you do?

- A. Modify the conditions of Rule1.
- B. Create two additional associations.
- C. Modify the rule type of Rule1.
- D. Modify the rate limit threshold of Rule1.

Answer: B

NEW QUESTION 10

- (Exam Topic 3)

You are planning the IP addressing for the subnets in Azure virtual networks. Which type of resource requires IP addresses in the subnets?

- A. Azure Virtual Network NAT
- B. virtual network peering
- C. service endpoints
- D. private endpoints

Answer: A

NEW QUESTION 11

- (Exam Topic 3)

You have a hybrid environment that uses ExpressRoute to connect an on-premises network and Azure.

You need to log the uptime and the latency of the connection periodically by using an Azure virtual machine and an on-premises virtual machine.

What should you use?

- A. Azure Monitor
- B. IP flow verify
- C. Connection Monitor
- D. Azure Internet Analyzer

Answer: C

Explanation:

Reference:

<https://docs.microsoft.com/en-us/azure/network-watcher/connection-monitor>

NEW QUESTION 12

- (Exam Topic 3)

You have an Azure Traffic Manager parent profile named TM1. TM1 has two child profiles named TM2 and TM3.

TM1 uses the performance traffic-routing method and has the endpoints shown in the following table.

Name	Location
App1	North Europe
App2	East US
App3	Central US
TM2	West Europe
TM3	West US

TM2 uses the weighted traffic-routing method with MinChildEndpoint = 2 and has the endpoints shown in the following table.

Name	Location	Weight
App4	West Europe	99
App5	West Europe	1

TM3 uses priority traffic-routing method and has the endpoints shown in the following table.

Name	Location
App6	West US
App2	East US

The App2, App4, and App6 endpoints have a degraded monitoring status.

To which endpoint is traffic directed? To answer, select the appropriate options in the answer area. NOTE: Each correct selection is worth one point

Answer Area

Traffic from West Europe:

	▼
App1	
App2	
App4	
App5	

Traffic from West US:

	▼
App1	
App2	
App3	
App6	

- A. Mastered
- B. Not Mastered

Answer: A

Explanation:

Diagram Description automatically generated

Reference:

<https://docs.microsoft.com/en-us/azure/traffic-manager/traffic-manager-nested-profiles>

Traffic from West Europe:

Based on TM1 table, West Europe will trigger TM2. However, as the MinChildEndpoint is set to 2, and App4 is degraded (down), the entire TM2 will not be considered available.

This goes back to the origin TM1 that uses performance traffic-routing method, which means the closest location is App1 and naturally be the next best performance instance.

Hence, Answer = App1

Traffic from West US:

Based on TM1 table, West US will trigger TM3. However, both App2 and App6 were degraded (down), so none of them can be considered.

This goes back to the original TM1 that uses performance traffic-routing method, from TM1, the other 2 US locations would be App2 and App3. But App2 we know it's already degraded (unavailable), hence the only option would be App3.

Answer = App3

NEW QUESTION 14

- (Exam Topic 3)

You plan to deploy an Azure virtual network. You need to design the subnets.

Which three types of resources require a dedicated subnet? Each correct answer presents a complete solution. NOTE: Each correct selection is worth one point.

- A. VPN gateway
- B. Azure Bastion
- C. Azure Active Directory Domain Services (Azure AD DS)
- D. Azure Application Gateway v2
- E. Azure Private Link

Answer: ABD

Explanation:

Reference:

<https://docs.microsoft.com/en-us/azure/virtual-network/virtual-network-for-azure-services>

NEW QUESTION 19

- (Exam Topic 3)

You have an Azure virtual network that contains a subnet named Subnet1. Subnet1 is associated to a network security group (NSG) named NSG1. NSG1 blocks all outbound traffic that is not allowed explicitly.

Subnet1 contains virtual machines that must communicate with the Azure Cosmos DB service.

You need to create an outbound security rule in NSG1 to enable the virtual machines to connect to Azure Cosmos DB.

What should you include in the solution?

- A. a service tag
- B. a private endpoint
- C. a subnet delegation
- D. an application security group

Answer: A

Explanation:

Reference:

<https://docs.microsoft.com/en-us/azure/virtual-network/service-tags-overview>

NEW QUESTION 20

- (Exam Topic 3)

You have an Azure subscription that contains the virtual machines shown in the following table.

Name	Connected to
VM1	Vnet1/Subnet1
VM2	Vnet1/Subnet2

Subnet1 and Subnet2 are associated to a network security group (NSG) named NSG1 that has the following outbound rule:

- > Priority: 100
- > Port: Any
- > Protocol: Any
- > Source: Any
- > Destination: Storage
- > Action: Deny

You create a private endpoint that has the following settings:

- > Name: Private1
- > Resource type: Microsoft.Storage/storageAccounts
- > Resource: storage1
- > Target sub-resource: blob
- > Virtual network: Vnet1
- > Subnet: Subnet1

For each of the following statements, select Yes if the statement is true. Otherwise, select No. NOTE: Each correct selection is worth one point.

Answer Area

Statements	Yes	No
From VM2, you can create a container in storage1	<input type="radio"/>	<input type="radio"/>
From VM1, you can upload data to a blob storage container in storage1	<input type="radio"/>	<input type="radio"/>
From VM2, you can upload data to a blob storage container in storage1	<input type="radio"/>	<input type="radio"/>

- A. Mastered
- B. Not Mastered

Answer: A

Explanation:

Yes, Yes, Yes

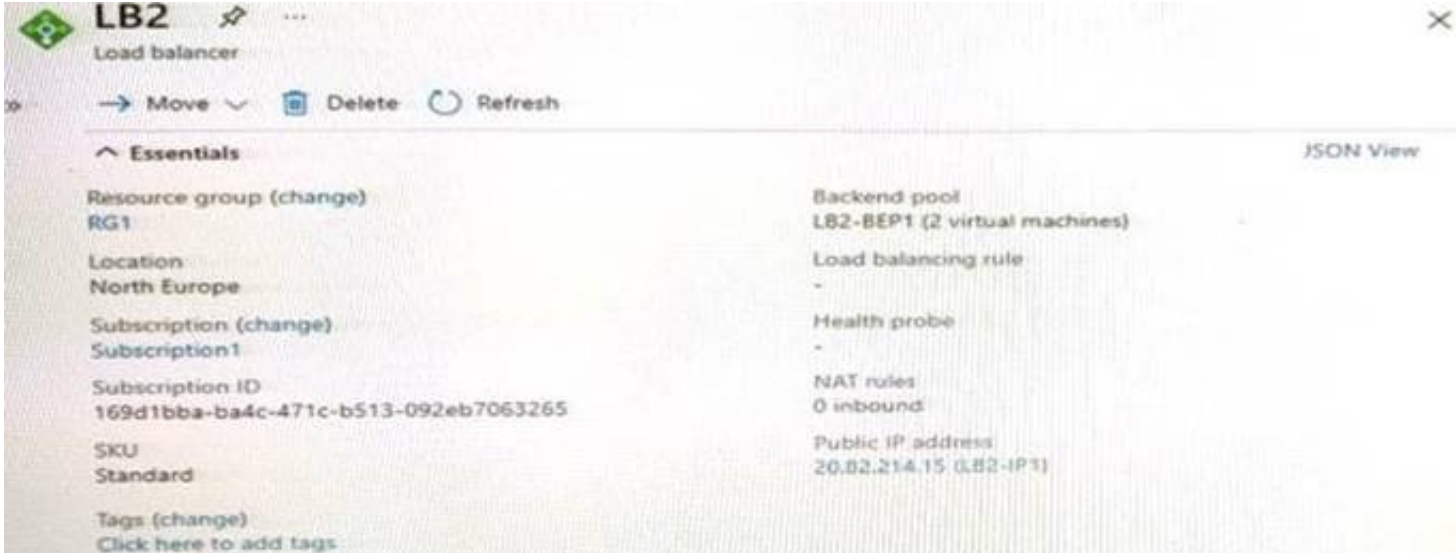
NSG rules applied to the subnet hosting the private endpoint are not applied to the private endpoint. So the NSG1 doesn't limit storage access from either VM1 or VM2.

<https://docs.microsoft.com/en-us/azure/storage/common/storage-private-endpoints#network-security-group-rule>

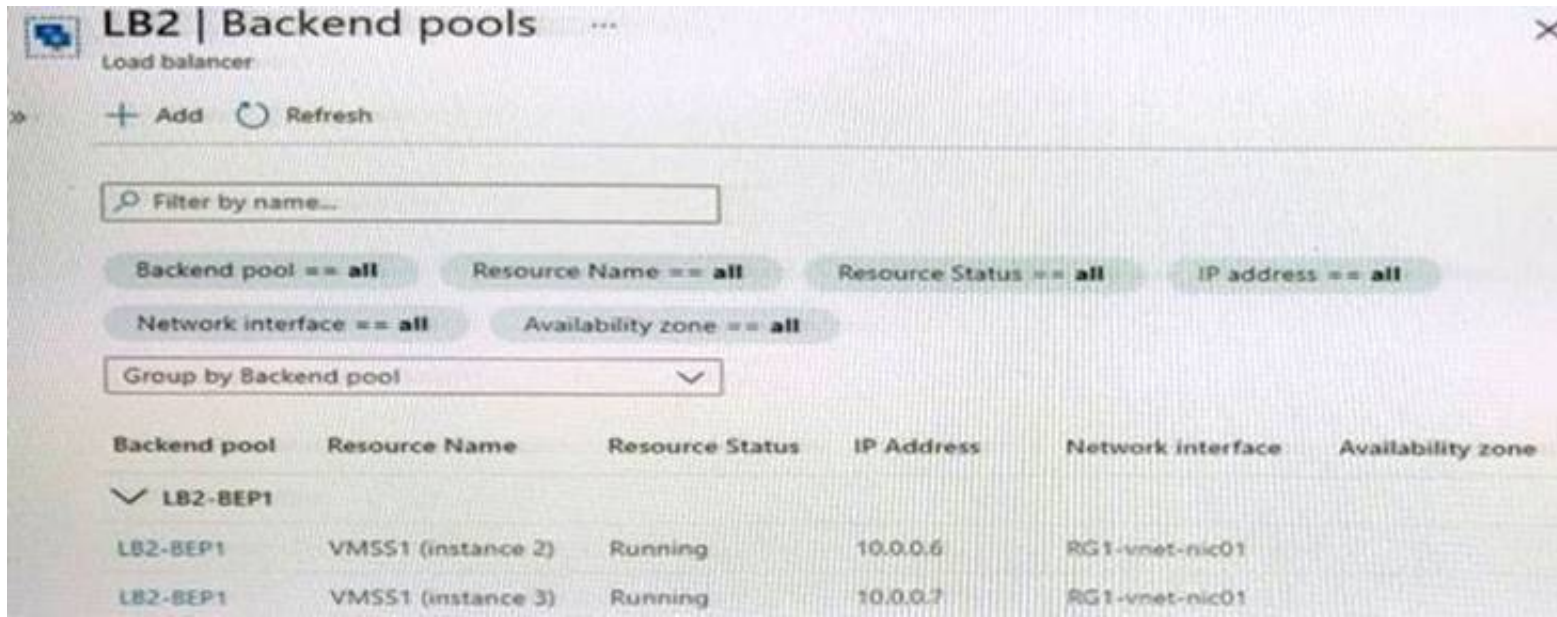
NEW QUESTION 24

- (Exam Topic 3)

You have the Azure load balancer shown in the Load Balancer exhibit.



LB2 has the backend pools shown in the Backend Pools exhibit.



You need to ensure that LB2 distributes traffic to all the members of VMSS1.
 What should you do?

- A. Add a network interface to VMSS1.
- B. Configure a health probe.
- C. Add a public IP address to each member of VMSS1.
- D. Add a load balancing rule.

Answer: D

NEW QUESTION 25

- (Exam Topic 3)

You have an Azure subscription that is linked to an Azure Active Directory (Azure AD) tenant named contoso.onmicrosoft.com. The subscription contains the following resources:

- * An Azure App Service app named App1
- * An Azure DNS zone named contoso.com
- * An Azure private DNS zone named private.contoso.com
- * A virtual network named Vnet1

You create a private endpoint for App1. The record for the endpoint is registered automatically in Azure DNS. You need to provide a developer with the name that is registered in Azure DNS for the private endpoint.

What should you provide?

- A. app1.privatelink.azurewebsites.net
- B. app1.contoso.com
- C. app1.contoso.onmicrosoft.com
- D. app1.private.contoso.com

Answer: A

NEW QUESTION 26

- (Exam Topic 3)

You have an Azure subscription that contains the resources shown in the following table.

Name	Type	Location
WebApp1	Web app	West US
VNet1	Virtual network	East US

The IP Addresses settings for Vnet1 are configured as shown in the exhibit.

Basic IP Addresses Security Tags Review + create

The virtual network's address space, specified as one or more address prefixes in CIDR notation (e.g. 192.168.1.0/24).

IPv4 address space

10.3.0.0/16 10.3.0.0 - 10.3.255.255 (65536 addresses) 

☐ Add IPv6 address space ⓘ

The subnet's address range in CIDR notation (e.g. 192.168.1.0/24). It must be contained by the address space of the virtual network.

 Add subnet  Remove subnet

<input type="checkbox"/> Subnet name	Subnet address range	NAT gateway
<input type="checkbox"/> Subnet1	10.3.0.0/16	

 Use of a NAT gateway is recommended for outbound internet access from a subnet. You can deploy a NAT gateway and assign it to a subnet after you create the virtual network. [Learn more](#)

You need to ensure that you can integrate WebApp1 and Vnet1.
Which three actions should you perform in sequence before you can integrate WebApp1 and Vnet1? To answer, move the appropriate actions from the list of actions to the answer area and arrange them in the correct order.

Actions

- Create a service endpoint
- Deploy a VPN gateway
- Add a private endpoint
- Modify the address space of Vnet1
- Configure a Point-to-Site (P2S) VPN

Answer Area



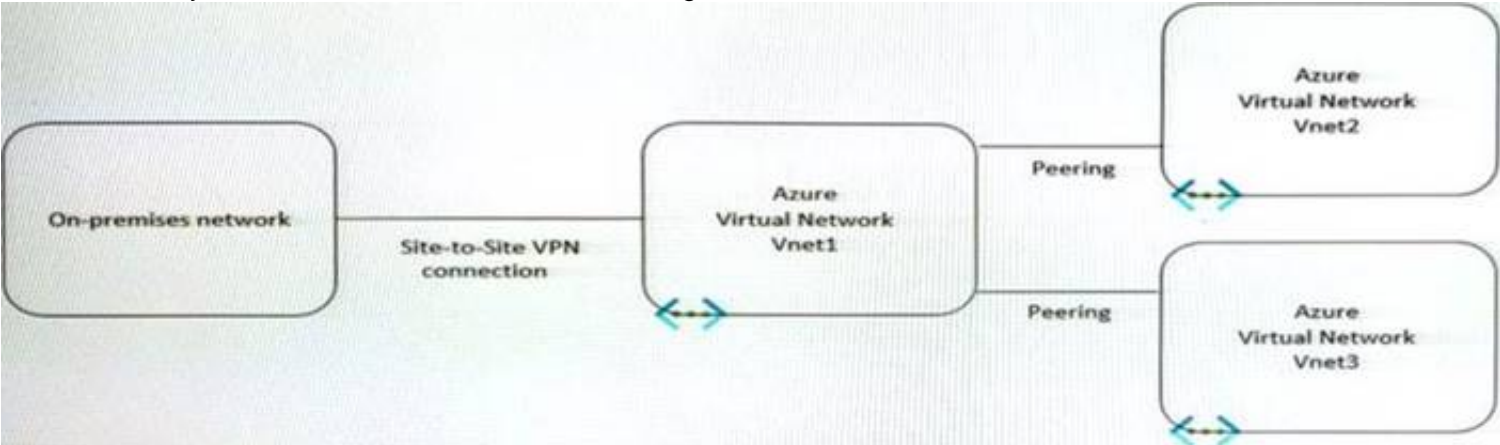


- A. Mastered
- B. Not Mastered

Answer: A

Explanation:
Text Description automatically generated with medium confidence
Reference:
<https://docs.microsoft.com/en-us/azure/app-service/web-sites-integrate-with-vnet#gateway-required-vnet-integra>

NEW QUESTION 29
- (Exam Topic 3)
You have the hybrid network shown in the Network Diagram exhibit.



You have a peering connection between Vnet1 and Vnet2 as shown in the Peering-Vnet1-Vnet2 exhibit.

Add peering

Vnet1

This virtual network

Peering link name *

Peering-Vnet1-Vnet2

Traffic to remote virtual network

☒ Allow (default)

☐ Block all traffic to the remote virtual network

Traffic forwarded from remote virtual network

☒ Allow (default)

☐ Block traffic that originates from outside this virtual network

Virtual network gateway or Route Server

☐ Use this virtual network's gateway or Route Server

☐ Use the remote virtual network's gateway or Route Server

☒ None (default)

Remote virtual network

Peering link name *

Peering-Vnet1-Vnet2

Virtual network deployment model

☒ Resource manager

☐ Classic

☐ I know my resource ID

Subscription *

Subscription1

Virtual network *

Vnet2

Traffic to remote virtual network

☒ Allow (default)

☐ Block all traffic to the remote virtual network

Add

You have a peering connection between Vnet1 and Vnet3 as shown in the Peering -Vnet1-Vnet3 exhibit.

Add peering

Vnet3

This virtual network

Peering link name *

Peering-Vnet1-Vnet3

Traffic to remote virtual network

☒ Allow (default)

☐ Block all traffic to the remote virtual network

Traffic forwarded from remote virtual network

☒ Allow (default)

☐ Block traffic that originates from outside this virtual network

Virtual network gateway or Route Server

☐ Use this virtual network's gateway or Route Server

☐ Use the remote virtual network's gateway or Route Server

☒ None (default)

Remote virtual network

Peering link name *

Peering-Vnet1-Vnet3

Virtual network deployment model

☒ Resource manager

☐ Classic

☐ I know my resource ID

Subscription *

Subscription1

Virtual network *

Vnet1

Traffic to remote virtual network

☒ Allow (default)

☐ Block all traffic to the remote virtual network

Traffic forwarded from remote virtual network

☒ Allow (default)

☐ Block traffic that originates from outside this virtual network

Virtual network gateway or Route Server

☐ Use this virtual network's gateway or Route Server

☐ Use the remote virtual network's gateway or Route Server

☒ None (default)

Add

For each of the following statements, select Yes if the statement is true. Otherwise, select No. NOTE: Each correct selection is worth one point.

Answer Area

Statements	Yes	No
The resources in Vnet2 can communicate with the resources in Vnet1.	<input type="radio"/>	<input type="radio"/>
The resources in Vnet2 can communicate with the resources in Vnet3.	<input type="radio"/>	<input type="radio"/>
The resources in Vnet2 can communicate with the resources in the on-premises network.	<input type="radio"/>	<input type="radio"/>

- A. Mastered
 B. Not Mastered

Answer: A

Explanation:

Answer Area

Statements	Yes	No
The resources in Vnet2 can communicate with the resources in Vnet1.	<input checked="" type="radio"/>	<input type="radio"/>
The resources in Vnet2 can communicate with the resources in Vnet3.	<input checked="" type="radio"/>	<input type="radio"/>
The resources in Vnet2 can communicate with the resources in the on-premises network.	<input type="radio"/>	<input checked="" type="radio"/>

NEW QUESTION 32

- (Exam Topic 3)

Azure virtual networks in the East US Azure region as shown in the following table.

Name	IP address space
Vnet1	192.168.0.0/20
Vnet2	10.0.0.0/20

The virtual networks are peered to one another. Each virtual network contains four subnets.

You plan to deploy a virtual machine named VM1 that will inspect and route traffic between all the subnets on both the virtual networks.

What is the minimum number of IP addresses that you must assign to VM1?

- A. 1
 B. 2
 C. 4
 D. 8

Answer: A

NEW QUESTION 35

- (Exam Topic 3)

Note: This question is part of a series of questions that present the same scenario. Each question in the series contains a unique solution that might meet the stated goals. Some question sets might have more than one correct solution, while others might not have a correct solution.

After you answer a question in this section, you will NOT be able to return to it. As a result, these questions will not appear in the review screen.

You have an Azure application gateway that has Azure Web Application Firewall (WAF) enabled. You configure the application gateway to direct traffic to the URL of the application gateway.

You attempt to access the URL and receive an HTTP 403 error. You view the diagnostics log and discover the following error.

```
{
  "timeStamp": "2021-06-02T18:13:45+00:00",
  "resourceID": "/SUBSCRIPTIONS/489f2hht-se7y-987v-g571-463hw3679512/RESOURCEGROUPS/RG1/PROVIDERS/MICROSOFT.NETWORK/APPLICATIONGATEWAYS/AGW1",
  "operationName": "ApplicationGatewayFirewall",
  "category": "ApplicationGatewayFirewallLog",
  "properties": {
    "instanceId": "appgw_0",
    "clientIp": "137.135.10.24",
    "clientPort": "",
    "requestUri": "/login",
    "ruleSetType": "OWASP_CRS",
    "ruleSetVersion": "3.0.0",
    "ruleId": "920300",
    "message": "Request Missing an Accept Header",
    "action": "Matched",
    "site": "Global",
    "details": {
      "message": "Warning. Match of '\\\\\"pm AppleWebKit Android\\\\\" against '\\\\\"REQUEST_HEADER:User-Agent\\\\\" required. ",
      "data": "",
      "file": "rules\\REQUEST-920-PROTOCOL-ENFORCEMENT.conf",
      "line": "1247"
    }
  },
  "hostname": "appl.contoso.com",
  "transactionId": "f7546159yhjk7wall4568if5131t68h7",
  "policyId": "default",
  "policyScope": "Global",
  "policyScopeName": "Global",
}
```

You need to ensure that the URL is accessible through the application gateway.

Solution: You create a WAF policy exclusion for request headers that contain 137.135.10.24. Does this meet the goal?

- A. Yes
- B. No

Answer: B

Explanation:

The parameter here should be RemoteAddr not Request header.

<https://docs.microsoft.com/en-us/azure/web-application-firewall/ag/custom-waf-rules-overview#match-variable>

NEW QUESTION 36

- (Exam Topic 3)

Note: This question is part of a series of questions that present the same scenario. Each question in the series contains a unique solution that might meet the stated goals. Some question sets might have more than one correct solution, while others might not have a correct solution.

After you answer a question in this section, you will NOT be able to return to it. As a result, these questions will not appear in the review screen.

You have an Azure subscription that contains the following resources:

- * A virtual network named Vnet1
- * A subnet named Subnet1 in Vnet1
- * A virtual machine named VM1 that connects to Subnet1
- * Three storage accounts named storage1, storage2, and storage3

You need to ensure that VM1 can access storage1. VM1 must be prevented from accessing any other storage accounts.

Solution: You configure the firewall on storage1 to only accept connections from Vnet1. Does this meet the goal?

- A. Yes
- B. No

Answer: B

NEW QUESTION 38

- (Exam Topic 3)

You have an Azure subscription that contains the following resources:

- > A virtual network named Vnet1
- > Two subnets named subnet1 and AzureFirewallSubnet
- > A public Azure Firewall named FW1
- > A route table named RT1 that is associated to Subnet1
- > A rule routing of 0.0.0.0/0 to FW1 in RT1

After deploying 10 servers that run Windows Server to Subnet1, you discover that none of the virtual machines were activated.

You need to ensure that the virtual machines can be activated. What should you do?

- A. On FW1, create an outbound service tag rule for AzureCloud.
- B. On FW1, create an outbound network rule that allows traffic to the Azure Key Management Service (KMS).
- C. Deploy a NAT gateway.
- D. To Subnet1, associate a network security group (NSG) that allows outbound access to port 1688.

Answer: B

Explanation:

Reference:

<https://ryanmangansitblog.com/2020/05/11/firewall-considerations-windows-virtual-desktop-wvd/>

NEW QUESTION 40

- (Exam Topic 3)

You have an Azure application gateway named AppGW1 that balances requests to a web app named App1. You need to modify the server variables in the response header of App1.

What should you configure on AppGW1?

- A. HTTP settings
- B. rewrites
- C. rules
- D. listeners

Answer: B

Explanation:

Reference:

<https://docs.microsoft.com/en-us/azure/application-gateway/rewrite-http-headers-url>

NEW QUESTION 44

- (Exam Topic 3)

You have the Azure resources shown in the following table.

Name	Type	Location	Description
storage1	Storage account	East US	Read-access geo-redundant storage (RA-GRS)
Vnet1	Virtual network	East US	Contains one subnet

You configure storage1 to provide access to the subnet in Vnet1 by using a service endpoint.
You need to ensure that you can use the service endpoint to connect to the read-only endpoint of storage1 in the paired Azure region.
What should you do first?

- A. Configure the firewall settings for storage1.
- B. Fail over storage1 to the paired Azure region.
- C. Create a virtual network in the paired Azure region.
- D. Create another service endpoint.

Answer: A

NEW QUESTION 46

- (Exam Topic 3)

Note: This question is part of a series of questions that present the same scenario. Each question in the series contains a unique solution that might meet the stated goals. Some question sets might have more than one correct solution, while others might not have a correct solution.

After you answer a question in this section, you will NOT be able to return to it. As a result, these questions will not appear in the review screen.

You have an Azure subscription that contains the following resources:

- * A virtual network named Vnet1
- * A subnet named Subnet1 in Vnet1
- * A virtual machine named VM1 that connects to Subnet1
- * Three storage accounts named storage1, storage2, and storage3

You need to ensure that VM1 can access storage1. VM1 must be prevented from accessing any other storage accounts.

Solution: You create a network security group (NSG) and associate the NSG to Subnet1. Does this meet the goal?

- A. Yes
- B. No

Answer: A

NEW QUESTION 47

- (Exam Topic 3)

Your company has an Azure virtual network named Vnet1 that uses an IP address space of 192.168.0.0/20. Vnet1 contains a subnet named Subnet1 that uses an IP address space of 192.168.0.0/24.

You create an IPv6 address range to Vnet1 by using a CIDR suffix of /48.

You need to enable the virtual machines on Subnet1 to communicate with each other by using IPv6 addresses assigned by the company. The solution must minimize the number of additional IPv4 addresses.

What should you do? To answer, select the appropriate options in the answer area. NOTE: Each correct selection is worth one point.

Answer Area

Create an IPv6 subnet that uses a CIDR suffix of:

	▼
/20	
/24	
/48	
/64	

For each virtual machine, create an additional:

	▼
IP configuration	
NIC	
Public IPv6 address	

- A. Mastered
- B. Not Mastered

Answer: A

Explanation:

:

Add IPv6 configuration to NIC. "Configure all of the VM NICs with an IPv6 address using Add-AzNetworkInterfaceIpConfig"

Source: <https://docs.microsoft.com/en-us/azure/load-balancer/ipv6-add-to-existing-vnet-powershell>

NEW QUESTION 50

- (Exam Topic 3)

Note: This question is part of a series of questions that present the same scenario. Each question in the series contains a unique solution that might meet the stated goals. Some question sets might have more than one correct solution, while others might not have a correct solution.

After you answer a question in this section, you will NOT be able to return to it. As a result, these questions will not appear in the review screen.

You have an Azure application gateway that has Azure Web Application Firewall (WAF) enabled. You configure the application gateway to direct traffic to the URL of the application gateway.

You attempt to access the URL and receive an HTTP 403 error. You view the diagnostics log and discover the following error.

```
{
  "timeStamp": "2021-06-02T18:13:45+00:00",
  "resourceId": "/SUBSCRIPTIONS/6efbb4a5-d91a-4e4a-b6bf-5b0d6efea73c/RESOURCEGROUPS/RG1/PROVIDERS/MICROSOFT.NETWORK/APPLICATIONGATEWAYS/AGW1",
  "operationName": "ApplicationGatewayFirewall",
  "category": "ApplicationGatewayFirewallLog",
  "properties": {
    "instanceId": "appgw_0",
    "clientIp": "137.135.10.24",
    "clientPort": "",
    "requestUri": "/login",
    "ruleSetType": "OWASP_CRS",
    "ruleSetVersion": "3.0.0",
    "ruleId": "920300",
    "message": "Request Missing an Accept Header",
    "action": "Matched",
    "site": "Global",
    "details": {
      "message": "Warning: Match of '\\\\\"pm AppleWebKit Android\\\\\"' against '\\\\\"REQUEST_HEADERS:User-Agent\\\\\"' required. ",
      "data": "",
      "file": "rules\\REQUEST-920-PROTOCOL-ENFORCEMENT.conf",
      "line": "1247"
    },
    "hostname": "app1.contoso.com",
    "transactionId": "d654811d0hgqlw198165hq7428d74h6",
    "policyId": "default",
    "policyScope": "Global",
    "policyScopeName": "Global"
  }
}
```

You need to ensure that the URL is accessible through the application gateway. Solution: You configure a custom cookie and an exclusion rule. Does this meet the goal?

- A. Yes
- B. No

Answer: A

NEW QUESTION 53

- (Exam Topic 3)

You have an Azure virtual network that contains the subnets shown in the following table.

Name	IP address space
AzureFirewallSubnet	192.168.1.0/24
Subnet2	192.168.2.0/24

You deploy an Azure firewall to AzureFirewallSubnet. You route all traffic from Subnet2 through the firewall. You need to ensure that all the hosts on Subnet2 can access an external site located at https://*.contoso.com. What should you do?

- A. Create a network security group (NSG) and associate the NSG to Subnet2.
- B. In a firewall policy, create an application rule.
- C. In a firewall policy, create a DNAT rule.
- D. In a firewall policy, create a network rule.

Answer: B

NEW QUESTION 57

- (Exam Topic 3)

You have an Azure subscription that contains the public IPv4 addresses shown in the following table.

Name	SKU	IP address assignment	Location
IP1	Basic	Static	West US
IP2	Basic	Dynamic	West US
IP3	Standard	Static	West US
IP4	Basic	Static	West US 2
IP5	Standard	Static	West US

You plan to create a load balancer named LB1 that will have the following settings:

- * Name: LB1
- * Location: West US
- * Type: Public
- * SKU: Standard

Which public IPv4 addresses can be used by LB1?

- A. IP1 and IP3 only
- B. IP3 only
- C. IP3 and IP5 only
- D. IP2only

- E. IP1, IP2, IP3, IP4, and IP5
- F. IP1, IP3, IP4, and IP5 only

Answer: C

Explanation:

Reference:

<https://docs.microsoft.com/en-us/azure/virtual-network/virtual-network-public-ip-address>

This is because "Load balancer and the public IP address SKU must match when you use them with public IP addresses" <https://docs.microsoft.com/en-us/azure/load-balancer/skus>

Standard SKU Load Balancer routes traffic within and across regions, and to Availability Zones for high resiliency.

NEW QUESTION 59

- (Exam Topic 3)

You have an Azure application gateway for a web app named App1. The application gateway allows end-to-end encryption.

You configure the listener for HTTPS by uploading an enterprise signed certificate.

You need to ensure that the application gateway can provide end-to-end encryption for App1. What should you do?

- A. Set Listener type to Multi site.
- B. Increase the Unhealthy threshold setting in the custom probe.
- C. Upload the public key certificate to the HTTPS settings.
- D. Enable the SSL profile for the listener.

Answer: C

Explanation:

Reference:

<https://docs.microsoft.com/en-us/azure/application-gateway/end-to-end-ssl-portal> <https://docs.microsoft.com/en-us/azure/application-gateway/create-ssl-portal#configuration-tab>

NEW QUESTION 60

- (Exam Topic 3)

You have an application named App1 that listens for incoming requests on a preconfigured group of 50 TCP ports and UDP ports.

You install App1 on 10 Azure virtual machines.

You need to implement load balancing for App1 across all the virtual machines. The solution must minimize the number of load balancing rules.

What should you include in the solution?

- A. Azure Standard Load Balancer that has Floating IP enabled
- B. Azure Application Gateway V2 that has multiple listeners
- C. Azure Application Gateway v2 that has multiple site hosting enabled
- D. Azure Standard Load Balancer that has high availability (HA) ports enabled

Answer: A

NEW QUESTION 62

- (Exam Topic 3)

You have an Azure subscription that contains two virtual networks named Vnet1 and Vnet2.

You register a public DNS zone named fabrikam.com. The zone is configured as shown in the Public DNS Zone exhibit.

DNS

Fabrikam.com

DNS zone

+ Record set

+ Child zone

→ Move

🗑️ Delete zone

🔄 Refresh

^ Essentials

JSON View

Resource group (change)

:

rg1

Subscription (change)

:

Subscription1

Subscription ID

:

169d1bba-ba4c-471c-b513-092eb7063265

Name server 1

:

ns1-06.azure-dns.com.

Name server 2

:

ns2-06.azure-dns.net.

Name server 3

:

ns3-06.azure-dns.org.

Name server 4

:

ns4-06.azure-dns.info.

Tags (change)

:

Click here to add tags

📘 You can search for record sets that have been loaded on this page. If you don't see what you're looking for, you can try scrolling to allow more record sets to load.

🔍 Search record sets

Name	Type	TTL	Value
@	NS	172800	ns1-06.azure-dns.com. ns2-06.azure-dns.net. ns3-06.azure-dns.org. ns4-06.azure-dns.info.
@	SOA	3600	Email: azuredns-hostmaster.microsoft.com Host: ns1-06.azure-dns.com. Refresh: 3600 Retry: 300 Expire: 2419200 Minimum TTL: 300 Serial number: 1
appservice1	A	3600	131.107.1.1
www	CNAME	3600	appservice1.fabrikam.com

You have a private DNS zone named fabrikam.com. The zone is configured as shown in the Private DNS Zone exhibit.

DNS

Fabrikam.com

Private DNS zone

+ Record set

→ Move

🗑️ Delete zone

🔄 Refresh

^ Essentials

JSON View

Resource group (change)

:

rg1

Subscription (change)

:

Subscription1

Subscription ID

:

169d1bba-ba4c-471c-b513-092eb7063265

Tags (change)

:

Click here to add tags

📘 You can search for record sets that have been loaded on this page. If you don't see what you're looking for, you can try scrolling to allow more record sets to load.

🔍 Search record sets

Name	Type	TTL	Value	Auto registered
@	SOA	3600	Email: azureprivatedns-hostmicrosoft.co... Host: azureprivatedns.net. Refresh: 3600 Retry: 300 Expire: 2419200 Minimum TTL: 10 Serial number: 1	False
appservice1	A	3600	131.107.100.10	False
server1	A	3600	131.107.100.1	False
server2	A	3600	131.107.100.2	False
server3	A	3600	131.107.100.3	False
www	CNAME	3600	appservice1.fabrikam.com	False

You have a virtual network link configured as shown in the Virtual Network Link exhibit.

Fabrikam.com Virtual network links			
Private DNS zone			
+ Add ↻ Refresh			
🔍 Search virtual network links			
Link Name	Link status	Virtual network	Auto-Registration
vnet1_link	Completed	Vnet1	Disabled ***

For each of the following statements, select Yes if the statement is true. Otherwise, select No. NOTE: Each correct selection is worth one point.

Answer Area

Statements	Yes	No
Queries for www.fabrikam.com from the internet are resolved to 131.107.1.1.	<input type="radio"/>	<input type="radio"/>
Queries for server1.fabrikam.com can be resolved from the internet.	<input type="radio"/>	<input type="radio"/>
Queries for www.fabrikam.com from Vnet2 are resolved to 131.107.100.10.	<input type="radio"/>	<input type="radio"/>

- A. Mastered
- B. Not Mastered

Answer: A

Explanation:

Answer Area

Statements	Yes	No
Queries for www.fabrikam.com from the internet are resolved to 131.107.1.1.	<input checked="" type="radio"/>	<input type="radio"/>
Queries for server1.fabrikam.com can be resolved from the internet.	<input type="radio"/>	<input checked="" type="radio"/>
Queries for www.fabrikam.com from Vnet2 are resolved to 131.107.100.10.	<input checked="" type="radio"/>	<input type="radio"/>

NEW QUESTION 66

- (Exam Topic 3)

You have an Azure Front Door instance that provides access to a web app. The web app uses a hostname of www.contoso.com. You have the routing rules shown in the following table.

Name	Path
RuleA	/abc/def
RuleB	/ab
RuleC	/*
RuleD	/abc/*

Which rule will apply to each incoming request? To answer, select the appropriate options in the answer area. NOTE: Each correct selection is worth one point

Answer Area

www.contoso.com/abc/def	<div><div>▼</div><div>RuleA</div><div>RuleB</div><div>RuleC</div><div>RuleD</div></div>
www.contoso.com/default.htm	<div><div>▼</div><div>RuleA</div><div>RuleB</div><div>RuleC</div><div>RuleD</div></div>
www.contoso.com/abc/def/default.htm	<div><div>▼</div><div>RuleA</div><div>RuleB</div><div>RuleC</div><div>RuleD</div></div>

- A. Mastered
- B. Not Mastered

Answer: A

Explanation:

Table Description automatically generated


Reference:



https://docs.microsoft.com/en-us/azure/frontdoor/front-door-route-matching

NEW QUESTION 69


- (Exam Topic 3)


You have an Azure firewall shown in the following exhibit.


**Firewall1**
Firewall



>>

 Delete

 Lock

 Visit Azure Firewall Manager to configure and manage this firewall. →

^ Essentials

Resource group (change)
RG1

Location
North Europe

Subscription (change)
Subscription1

Subscription ID
489f2hht-se7y-987v-g571-463hw3679512

Virtual network
Vnet1

Firewall policy
FirewallPolicy1

Provisioning state
Succeeded

Tags (change)
Click here to add tags

Firewall sku
Standard

Firewall subnet
AzureFirewallSubnet

Firewall public IP
Firewall-IP1

Firewall private IP
10.100.253.4

Management subnet

Management public IP

Private IP Ranges
Managed by Firewall Policy

Use the drop-down menus to select the answer choice that completes each statement based on the information presented in the graphic.
NOTE: Each correct selection is worth one point.

Answer Area

On Firewall1, forced tunneling [answer choice]

is enabled already

cannot be enabled

is disabled but can be enabled

On Firewall1, management by Azure Firewall Manager [answer choice]

is enabled already

cannot be enabled

is disabled but can be enabled

- A. Mastered
- B. Not Mastered

Answer: A

Explanation:

Graphical user interface, text, application, email Description automatically generated

Box 1:

If forced tunneling was enabled, the Firewall Subnet would be named AzureFirewallManagementSubnet. Forced tunneling can only be enabled during the creation of the firewall. It cannot be enabled after the firewall has been deployed.

Box 2:

The “Visit Azure Firewall Manager to configure and manage this firewall” link in the exhibit shows that the firewall is managed by Azure Firewall Manager.

NEW QUESTION 74

- (Exam Topic 3)

You have the network topology shown in the Topology exhibit. (Click the Topology tab.)



You have the Azure firewall shown in the Firewall 1 exhibit. (Click the Firewall tab.)

Firewall1

Visit Azure Firewall Manager to configure and manage this firewall. →

Essentials

Resource group (change)	Firewall sku
RG2	Standard
Location	Firewall subnet
North Europe	AzureFirewallSubnet
Subscription (change)	Firewall public IP
Visual Studio Premium with MSDN	Firewall1-IP1
Subscription ID	Firewall private IP
8372f433-2dcd-4361-b5ef-5b16afed87d0	10.100.253.4
Virtual network	Management subnet
Vnet1	
Firewall policy	Management public IP
FirewallPolicy	
Provisioning state	Private IP Range
Succeeded	Managed by Firewall Policy
Tags (change)	
Click here to add tags	

JSON View

You have the route table shown in the RouteTable1 exhibit. (Click the RouteTable1 tab.)

All servicesRoute tables

RouteTable1

Route table

MoveDeleteRefreshGive feedback

Essentials

JSON View

Resource group (change)

RG1

Location

North Europe

Subscription (change)

Virtual Studio Premium with MSDN

Subscription ID

8372f483-2dcd-4361-b5ef-5b188fed87d0

Tags (change)

Click here to add tags

Routes

Search routes

Name	Address prefix	Next hop type	Next hop IP address
Route1	10.1.0.0/16	Virtual network gateway	
Route2	0.0.0.0/0	Virtual appliance	10.100.253.4

Subnets

Search subnets

Name	Address range	Virtual network	Security group
Subnet1	10.100.1.0/24	Vnet1	

For each of the following statements, select Yes if the statement is true. Otherwise, select No. NOTE: Each correct selection is worth one point.

Answer Area

Statements	Yes	No
The resources in Subnet1 can connect to the internet through Firewall1.	<input type="radio"/>	<input type="radio"/>
The resources in Subnet1 can connect to the resources in Vnet2.	<input type="radio"/>	<input type="radio"/>
The resources in Subnet2 can connect to the internet through Firewall1.	<input type="radio"/>	<input type="radio"/>

- A. Mastered
- B. Not Mastered

Answer: A

Explanation:

Answer Area

Statements	Yes	No
The resources in Subnet1 can connect to the internet through Firewall1.	<input checked="" type="radio"/>	<input type="radio"/>
The resources in Subnet1 can connect to the resources in Vnet2.	<input checked="" type="radio"/>	<input type="radio"/>
The resources in Subnet2 can connect to the internet through Firewall1.	<input type="radio"/>	<input type="radio"/>

NEW QUESTION 76

- (Exam Topic 3)

You have an Azure subscription that contains an Azure App Service app. The app uses a URL of https://www.contoso.com. You need to use a custom domain on Azure Front Door for www.contoso.com. The custom domain must use a certificate from an allowed certification authority (CA). What should you include in the solution?

- A. an enterprise application in Azure Active Directory (Azure AD)
- B. Active Directory Certificate Services (AD CS)
- C. Azure Key Vault
- D. Azure Application Gateway

Answer: C

Explanation:

Reference:

<https://docs.microsoft.com/en-us/azure/frontdoor/front-door-custom-domain-https>

NEW QUESTION 79

.....

Thank You for Trying Our Product

We offer two products:

1st - We have Practice Tests Software with Actual Exam Questions

2nd - Questons and Answers in PDF Format

AZ-700 Practice Exam Features:

- * AZ-700 Questions and Answers Updated Frequently
- * AZ-700 Practice Questions Verified by Expert Senior Certified Staff
- * AZ-700 Most Realistic Questions that Guarantee you a Pass on Your FirstTry
- * AZ-700 Practice Test Questions in Multiple Choice Formats and Updatesfor 1 Year

100% Actual & Verified — Instant Download, Please Click
[Order The AZ-700 Practice Test Here](#)