

Microsoft

Exam Questions mb-300

Microsoft Dynamics 365 Unified Operations Core



NEW QUESTION 1

- (Exam Topic 2)

You plan the migration from Dynamics AX 2012 R3 to a Dynamics 365 for Finance and Operations environment. You will be using Lifecycle Services (LCS) and the tools provided with it.

You need to clean up data, review and configure SQL optimizations, and identify deprecated features in your code. What tool should you use?

- A. Microsoft Azure DevOps
- B. Upgrade analyzer
- C. Data Import/Export Framework (DIXF)
- D. Code upgrade estimation tools

Answer: B

NEW QUESTION 2

- (Exam Topic 2)

You are tasked with enhancing usability in the Dynamics 365 for Finance and Operations deployment for your organization.

Your organization is evaluating different approaches, including using workspaces. You need to identify the goals of using workspaces.

Which goals should you identify? To answer, select the appropriate options in the answer area. NOTE: Each correct selection is worth one point.

Answer Area

| Requirement | Functional use |
|----------------------|--|
| Visibility | <div>Understand the current state of the light task activity to support informed decisions</div> <div>Display deep information supporting complex task execution</div> |
| Workspace definition | <div>An initial overview for a specific role to increase productivity</div> <div>A view of complex activities requiring interaction across different roles</div> |

- A. Mastered
- B. Not Mastered

Answer: A

Explanation:

Answer Area

| Requirement | Functional use |
|----------------------|--|
| Visibility | <div>Understand the current state of the light task activity to support informed decisions</div> <div>Display deep information supporting complex task execution</div> |
| Workspace definition | <div>An initial overview for a specific role to increase productivity</div> <div>A view of complex activities requiring interaction across different roles</div> |

NEW QUESTION 3

- (Exam Topic 2)

Note: This question is part of a series of questions that present the same scenario. Each question in the series contains a unique solution that might meet the stated goals. Some question sets might have more than one correct solution, while others might not have a correct solution.

After you answer a question in this section, you will NOT be able to return to it. As a result, these questions will not appear in the review screen.

You are a Dynamics 365 for Finance and Operations security administrator.

When testing security setups, users report that certain roles are gaining access to sensitive information via a form in the system.

You must investigate which user roles have what visibility and access level to system objects, and then send a report to the implementation team to address security compliance concerns.

You need to report the information from the system. Solution: Generate the Security role access report. Does the solution meet the goal?

- A. Yes
- B. No

Answer: A

NEW QUESTION 4

- (Exam Topic 2)

You plan the migration from Dynamics AX 2009 to a Dynamics 365 for Finance and Operations environment. You will be moving data.

You need to create a data package from a group of entities in Dynamics AX 2009. What should you use?

- A. Upgrade analyzer
- B. Code upgrade estimation tools
- C. Dynamics AX 2009 Data migration tool (DMT)

D. Data Import/Export Framework (DIXF)

Answer: D

Explanation:

References:

<https://docs.microsoft.com/en-us/dynamics365/unified-operations/dev-itpro/migration-upgrade/ax2009-upgrade-export-package>

NEW QUESTION 5

- (Exam Topic 2)

Note: This question is part of a series of questions that present the same scenario. Each question in the series contains a unique solution that might meet the stated goals. Some question sets might have more than one correct solution, while others might not have a correct solution.

After you answer a question in this section, you will NOT be able to return to it. As a result, these questions will not appear in the review screen.

You are a Dynamics 365 for Finance and Operations system administrator. You have a test environment that is used by several people at any given time.

You create a new data entity in your development and migrate the code to the test environment. In the test environment, you are unable to find the data entity in the list.

You need to locate the data entity.

Solution: Restart the Application Object Server (AOS) of the test environment. Does the solution meet the goal?

A. Yes

B. No

Answer: B

NEW QUESTION 6

- (Exam Topic 2)

A company plans to use Dynamics 365 for Finance and Operations. You need to implement the security architecture.

Which component should you use for each requirement? To answer, select the appropriate security component in the answer area.

NOTE: Each correct selection is worth one point.

Answer Area

| Requirement | Security component |
|--|--|
| Group the security configuration for employees with the same job function. | <div>Security roles</div> <div>Duties</div> <div>Privileges</div> <div>Permissions</div> |
| Assign check-depositing tasks to a group of people as part of the accounts receivable process. | <div>Security roles</div> <div>Duties</div> <div>Privileges</div> <div>Permissions</div> |
| Restrict access to a specific table or chart. | <div>Security roles</div> <div>Duties</div> <div>Privileges</div> <div>Permissions</div> |

A. Mastered

B. Not Mastered

Answer: A

Explanation:

Answer Area

| Requirement | Security component |
|--|--|
| Group the security configuration for employees with the same job function. | <div>Security roles</div> <div>Duties</div> <div>Privileges</div> <div>Permissions</div> |
| Assign check-depositing tasks to a group of people as part of the accounts receivable process. | <div>Security roles</div> <div>Duties</div> <div>Privileges</div> <div>Permissions</div> |
| Restrict access to a specific table or chart. | <div>Security roles</div> <div>Duties</div> <div>Privileges</div> <div>Permissions</div> |

NEW QUESTION 7

- (Exam Topic 2)

Note: This question is part of a series of questions that present the same scenario. Each question in the series contains a unique solution that might meet the stated goals. Some question sets might have more than one correct solution, while others might not have a correct solution.

After you answer a question in this section, you will NOT be able to return to it. As a result, these questions will not appear in the review screen.

You are a functional consultant who is deploying Dynamics 365 for Finance and Operations. The implementation must:

- Use an iterative approach
- Integrate with real-world data
- Enforce standards and governance
- Implement multiple rounds of feedback

You need to deploy and validate the implementation.

Solution: Use the XPPBP tool to export customizations and scenarios from a development sandbox. Make changes to the sandbox containing users. Deploy from the sandbox to the production environment.

Does the solution meet the goal?

A. Yes

B. No

Answer: B

NEW QUESTION 8

- (Exam Topic 2)

Note: This question is part of a series of questions that present the same scenario. Each question in the series contains a unique solution that might meet the stated goals. Some question sets might have more than one correct solution, while others might not have a correct solution.

After you answer a question in this section, you will NOT be able to return to it. As a result, these questions will not appear in the review screen.

You are a functional consultant who is deploying Dynamics 365 for Finance and Operations. The implementation must:

- ▶ Use an iterative approach
- ▶ Integrate with real-world data
- ▶ Enforce standards and governance
- ▶ Implement multiple rounds of feedback

You need to deploy and validate the implementation.

Solution: Deploy the out-of-the-box solution. Enable users to customize the solution based on individual user scenarios.

Does the solution meet the goal?

A. Yes

B. No

Answer: B

NEW QUESTION 9

- (Exam Topic 2)

An organization implements Dynamics 365 for Finance and Operations.

You need to determine where work items originate.

From which module do the following work items originate? To answer, drag the appropriate modules to the correct work items. Each module may be used once, more than once, or not at all. You may need to drag the split bar between panes or scroll to view content.

NOTE: Each correct selection is worth one point.

Modules

Accounts payable

Accounts receivable

Inventory management

Credit and collections

Answer Area

Work item

Purchase order

Invoice

Vendor invoice

Transfer order

Module

Module

Module

Module

A. Mastered

B. Not Mastered

Answer: A

Explanation:

Modules

Accounts payable

Accounts receivable

Inventory management

Credit and collections

Answer Area

Work item

Purchase order

Invoice

Vendor invoice

Transfer order

Module

Accounts payable

Accounts receivable

Accounts payable

Inventory management

NEW QUESTION 10

- (Exam Topic 2)

A company implements Dynamics 365 for Finance and Operations. It sets up and configures the system to support reporting requirements using Microsoft Power BI.

The customer service manager wants to create reports in Power BI for analyzing customer order patterns, order fulfillment metrics, customer satisfaction KPIs, and customer service representative goal metrics. These reports compare aggregated information across multiple demographic regions and business lines for current trends against historic information.

The manager would like to use the reports to make individual team performance more visible to the managerial and executive teams. Since reports will be used by those teams as well as mobile users, the manager would like the report response to reflect the latest data without requiring the user to wait.

You need to determine which tool or functionality best fits the scenario.

Which feature or functionality should you use? To answer, select the appropriate feature or functionality in the dialog box in the answer area.

NOTE: Each correct selection is worth one point

Answer Area

| Scenario | Feature or functionality |
|--|---|
| Stage the aggregate data for use by the reports. | <div>Dynamics 365 system administration settings</div> <div>Power BI desktop client</div> <div>Lifecycle Services</div> |
| Set the data source to use DirectQuery. | <div>Dynamics 365 system administration settings</div> <div>Power BI desktop client</div> <div>Lifecycle Services</div> |
| Publish the new reports to the production environment. | <div>Dynamics 365 system administration settings</div> <div>Power BI desktop client</div> <div>Lifecycle Services</div> |
| Configure the data refresh rate for periodic updating. | <div>Dynamics 365 system administration settings</div> <div>Power BI desktop client</div> <div>Lifecycle Services</div> |

A. Mastered

B. Not Mastered

Answer: A

Explanation:

Answer Area

| Scenario | Feature or functionality |
|--|---|
| Stage the aggregate data for use by the reports. | <div>Dynamics 365 system administration settings</div> <div>Power BI desktop client</div> <div>Lifecycle Services</div> |
| Set the data source to use DirectQuery. | <div>Dynamics 365 system administration settings</div> <div>Power BI desktop client</div> <div>Lifecycle Services</div> |
| Publish the new reports to the production environment. | <div>Dynamics 365 system administration settings</div> <div>Power BI desktop client</div> <div>Lifecycle Services</div> |
| Configure the data refresh rate for periodic updating. | <div>Dynamics 365 system administration settings</div> <div>Power BI desktop client</div> <div>Lifecycle Services</div> |

NEW QUESTION 10

- (Exam Topic 2)

During the implementation planning process, a company decides to migrate various functional data from its legacy systems. These include accounting data, sales data, and purchasing data.

Some functional data elements reference data stored in other tables.

You need to ensure that data types and data elements are imported in the correct order.

In what order should you perform the data migration? To answer, select the appropriate configuration in the answer area.

NOTE: Each correct selection is worth one point.

Answer Area

| Sequential order | Order options |
|------------------|--|
| Data category | Master, reference, transaction Reference, master, transaction Transaction, reference, master Transaction, master, reference |
| Data entity | Ledger journals, chart of accounts, account structures Chart of accounts, account structures, ledger journals Account structures, chart of accounts, ledger journals Ledger journals, account structures, chart of accounts |

- A. Mastered
- B. Not Mastered

Answer: A

Explanation:

Answer Area

| Sequential order | Order options |
|------------------|--|
| Data category | Master, reference, transaction Reference, master, transaction Transaction, reference, master Transaction, master, reference |
| Data entity | Ledger journals, chart of accounts, account structures Chart of accounts, account structures, ledger journals Account structures, chart of accounts, ledger journals Ledger journals, account structures, chart of accounts |

NEW QUESTION 14

- (Exam Topic 2)
You are a Dynamics 365 for Finance and Operations system administrator for a new implementation. You have a solution that needs to be tested using User Acceptance Testing (UAT). You have created a Business process modeler (BPM) library. You need to validate and support the solution. Which three actions should you perform? Each answer presents part of the solution.

- A. Upload the saved recording to BPM.
- B. Create a new Business process library
- C. Export the task recording to Microsoft Word and upload it to BPM.
- D. Record test cases and save them to BPM.
- E. Create and save a new task recording.

Answer: ABD

NEW QUESTION 18

- (Exam Topic 2)
You are responsible for automation efforts in a Dynamics 365 for Finance and Operations environment. You are running into performance issues on a specific Application Object Server (AOS) that is over-used. You need to alter your batch processing of high-demand items to have affinity to a new AOS server. What batch processing component should you change?

- A. Batch task
- B. Batch group
- C. Batch periods
- D. Batch job

Answer: A

NEW QUESTION 20

- (Exam Topic 2)
You are a system administrator using Dynamics 365 for Finance and Operations. You are responsible for troubleshooting workflows. You need to determine where workflows are failing based on error messages.

Which runtime is raising the error when the following activity and error occurs? To answer, select the appropriate runtime in the answer area.
NOTE: Each correct selection is worth one point.

Answer Area

| Activity and error | Runtime |
|---|---|
| A user submits an expense report by clicking the Submit button on one of the workflow controls. An error occurs. | <div>Managed workflow runtime</div> <div>X++ workflow runtime</div> |
| .NET Interop from X++ receives the message and starts a new workflow instance via Windows Workflow Foundation. An error occurs. | <div>X++ workflow runtime</div> <div>Managed workflow runtime</div> |
| The messaging batch job reads the Workflow started message from the message queue and invokes the application event handler to process a workflow started event. An error occurs. | <div>Managed workflow runtime</div> <div>X++ workflow runtime</div> |

- A. Mastered
- B. Not Mastered

Answer: A

Explanation:

References:
<https://docs.microsoft.com/en-us/dynamics365/unified-operations/fin-and-ops/organization-administration/work>

NEW QUESTION 23

- (Exam Topic 2)
You are a systems administrator for a Dynamics 365 for Finance and Operations environment.
You must notify the person responsible for deliveries that production could be delayed if deliveries are postponed.
You need to configure the alert.
What object should you configure the alert on?

- A. Inventory control
- B. Inventory location
- C. Purchase order
- D. Product

Answer: C

NEW QUESTION 27

- (Exam Topic 2)
A company implements Dynamics 365 for Finance and Operations. It must set up the system to be ready for entering inventory items. You need to select which unit of conversion fits the scenario.
Which conversion types should you use? To answer, select the appropriate options in the answer area. NOTE: Each correct selection is worth one point.

| Answer Area | Scenario | Conversion type |
|-------------|--|---|
| | Car paint colors and their ingredients are purchased in barrels, stocked in ounces, and sold in gallons. | <div>Standard</div> <div>Intra-class</div> <div>Inter-class</div> |
| | Steel is purchased in tons, stocked in pounds, and sold in linear feet. | <div>Standard</div> <div>Intra-class</div> <div>Inter-class</div> |
| | Bolts and nuts are purchased in pounds, stocked as individual units, and sold in boxes. | <div>Standard</div> <div>Intra-class</div> <div>Inter-class</div> |

- A. Mastered
- B. Not Mastered

Answer: A

Explanation:

| Answer Area | Scenario | Conversion type |
|-------------|--|---|
| | Car paint colors and their ingredients are purchased in barrels, stocked in ounces, and sold in gallons. | <div>Standard</div> <div>Intra-class</div> <div>Inter-class</div> |
| | Steel is purchased in tons, stocked in pounds, and sold in linear feet. | <div>Standard</div> <div>Intra-class</div> <div>Inter-class</div> |
| | Bolts and nuts are purchased in pounds, stocked as individual units, and sold in boxes. | <div>Standard</div> <div>Intra-class</div> <div>Inter-class</div> |

NEW QUESTION 30

- (Exam Topic 2)

You are a Dynamics 365 for Finance and Operations implementation consultant. You plan to use automated regression testing in a company's environment, as the system will be updated frequently until automatic updates can be applied. You need to identify when and what key business object should be used during the implementation. Which business objects should you use? To answer, drag the appropriate objects to the correct component actions. Each object may be used once, more than once, or not at all. You may need to drag the split bar between panes or scroll to view content. NOTE: Each correct selection is worth one point.

1234

Objects

Test scripts

Business requirements

Answer Area

Component actions

Generate from the analysis meetings

Use for regression testing

Generate use cases

Use in a gap analysis process

Object

Object

Object

Object

Object

- A. Mastered
- B. Not Mastered

Answer: A

Explanation:

1234

Objects

Test scripts

Business requirements

Answer Area

Component actions

Generate from the analysis meetings

Use for regression testing

Generate use cases

Use in a gap analysis process

Object

Test scripts

Test scripts

Business requirements

Business requirements

NEW QUESTION 32

- (Exam Topic 2)

Note: This question is part of a series of questions that present the same scenario. Each question in the series contains a unique solution that might meet the stated goals. Some question sets might have more than one correct solution, while others might not have a correct solution. After you answer a question in this section, you will NOT be able to return to it. As a result, these questions will not appear in the review screen.

You are a functional consultant who is deploying Dynamics 365 for Finance and Operations. The implementation must:

- ☒ Use an iterative approach
- ☒ Integrate with real-world data
- ☒ Enforce standards and governance
- ☒ Implement multiple rounds of feedback

You need to deploy and validate the implementation. Solution: Perform a fit-gap analysis. Configure Dynamics 365 for Finance and Operations to address the functional gap. Deploy the configuration. Does the solution meet the goal?

- A. Yes
- B. No

Answer: A

NEW QUESTION 34

- (Exam Topic 2)

You manage a Dynamics 365 for Finance and Operations environment. Users report slow queries, deadlocks, and crashes. You need identify which tool to use to troubleshoot. What should you use?

- A. System diagnostics
- B. Environment monitoring

- C. DirectQuery
- D. Microsoft Azure Active Directory Connect Health Agent

Answer: B

Explanation:

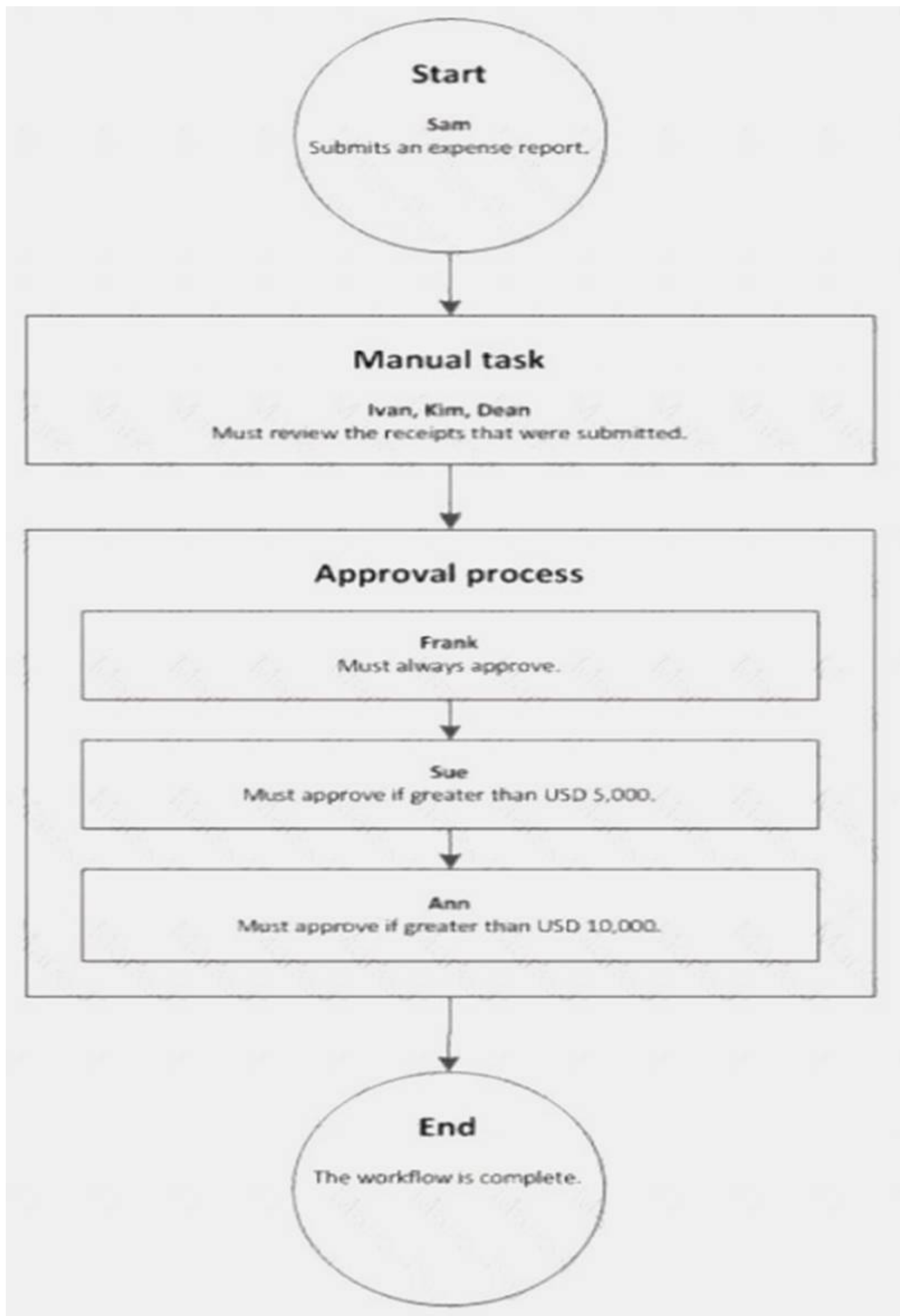
Reference:

<https://blogs.msdn.microsoft.com/axsa/2018/06/05/how-to-use-environment-monitoring-view-raw-logs/>

NEW QUESTION 35

- (Exam Topic 2)

A company sets up a workflow for expense reports. An employee named Sam submits an expense report totaling USD 7,000 to go through the workflow.



Use the drop-down menus to select the answer choice that answers each question based on the information presented in the graphic.

NOTE: Each correct selection is worth one point.

| Questions | Answer choice |
|---|---|
| What statement about the workflow is correct? | <div>Ann can reject the expense report.</div> <div>Ivan, Kim, and Dean must all complete the manual task.</div> <div>The workflow ends after Sue approves the expense report.</div> <div>The expense report will go through Frank, Sue, and Ann for approval.</div> |
| What type of workflow is this? | <div>Workflow with roles</div> <div>Workflow with a manual decision</div> <div>Workflow with multiple users in a task</div> <div>Workflow with a line-item workflow element</div> |

- A. Mastered
- B. Not Mastered

Answer: A

Explanation:

Reference:
<https://docs.microsoft.com/en-us/dynamicsax-2012/appuser-itpro/workflow-with-multiple-users-in-a-task>

NEW QUESTION 40

- (Exam Topic 2)

You are a Dynamics 365 for Finance and Operations system administrator.
A user is reporting an issue with the Sales Order form. The UI for the form is not loading properly, and there are some performance issues. The object was working fine until the most recent update release. The user has personalized this form, is using Microsoft Internet Explorer 11, and no other users are reporting issues. You need to resolve the issue. What should you do?

- A. Switch to Microsoft Edge instead of Internet Explorer 11.
- B. Open the form in a new Microsoft Edge InPrivate session.
- C. Delete the sales form object in the usage data form.
- D. Disable and then re-enable the user.

Answer: A

NEW QUESTION 44

- (Exam Topic 2)

Your company is using a highly customized version of Dynamics 365 for Finance and Operations. You have identified a new hotfix that will correct several important issues that have caused many user complaints.
You need to determine whether the hotfix will break any customizations.
Which four actions should you perform in sequence? To answer, move the appropriate actions from the list of actions to the answer area and arrange them in the correct order.

Actions

Upload the hotfix to Lifecycle Services

Download the hotfix from Lifecycle Services

Check in the entire hotfix as pending change and schedule and deploy it to the production environment

Build the hotfix in the development environment and accept changes

Install the hotfix in your Microsoft Azure DevOps application development environment in an Active state

Install the hotfix in your Microsoft Azure DevOps application development environment in a Pending state

Answer Area

- A. Mastered
- B. Not Mastered

Answer: A

Explanation:

References:

Passing Certification Exams Made Easy

visit - <https://www.surepassexam.com>

<https://docs.microsoft.com/en-us/dynamics365/unified-operations/dev-itpro/migration-upgrade/install-metadata->

NEW QUESTION 48

- (Exam Topic 2)

You are a Dynamics 365 for Finance and Operations system administrator.

The finance department is experiencing electronic reporting submittal issues. You must use all available sources to troubleshoot those issues.

You need to identify potential hotfixes.

Which four actions should you perform in sequence? To answer, move the appropriate actions from the list of actions to the answer area and arrange them in the correct order.

Actions

Log in to Lifecycle Services (LCS).

Use the Issue search tile.

Select a project to work in.

Enter the issue case number.

Enter search terms.

Create a new case.

>

<

Answer area

↑

↓

- A. Mastered
- B. Not Mastered

Answer: A

Explanation:

Reference:

<https://docs.microsoft.com/en-us/dynamics365/unified-operations/dev-itpro/lifecycle-services/issue-search-lcs>

NEW QUESTION 49

- (Exam Topic 2)

Your company acquires hundreds of partnerships after it purchases a separate company. The separate company stores the partnership records in a legacy system.

You export Partnership and PartnershipGroup files from the legacy system into Microsoft Word format. You create Partnership and PartnershipGroup entities.

You need to import the partnerships into Dynamics 365 for Finance and Operations.

Which four actions should you perform in order? To answer, move four actions from the list of actions to the answer area and arrange them in the correct order.

Actions

Perform the data import.

Convert the Word files to OData format. In the Dynamics 365 client Data management workspace, create a new data project.

In SQL Server Management Studio, use the SQL Server Integration Services import wizard.

In the Visual Studio Finance and Operations project, use the Data entity wizard.

Convert the Word files to CSV format. In the Dynamics 365 client Data management workspace, create a new data project.

For each file, select the entities and upload the files.

Validate all entity data mapping.

>

<

Answer Area

↑

↓

- A. Mastered
- B. Not Mastered

Answer: A

Explanation:

Actions

Answer Area

- Perform the data import.
- Convert the Word files to OData format. In the Dynamics 365 client Data management workspace, create a new data project.
- In SQL Server Management Studio, use the SQL Server Integration Services import wizard.
- In the Visual Studio Finance and Operations project, use the Data entity wizard.
- Convert the Word files to CSV format. In the Dynamics 365 client Data management workspace, create a new data project.
- For each file, select the entities and upload the files.
- Validate all entity data mapping.

- Convert the Word files to CSV format. In the Dynamics 365 client Data management workspace, create a new data project.
- Perform the data import.
- In SQL Server Management Studio, use the SQL Server Integration Services import wizard.
- Validate all entity data mapping.



NEW QUESTION 53

- (Exam Topic 2)

A company plans to create a global address book and additional address books for each line of business. You need to help add parties to the address books. What party types can you use for both the global address book and the additional address books? NOTE: Each correct selection is worth one point.

- A. Customer
- B. Vendor
- C. Person
- D. Competitor
- E. Organization

Answer: ABD

Explanation:

<https://docs.microsoft.com/en-sg/dynamics365/unified-operations/fin-and-ops/organization-administration/overv>

NEW QUESTION 56

- (Exam Topic 2)

You implement Dynamics 365 for Finance and Operations. The implementation will undergo User Acceptance Testing (UAT). You create test case recordings. To coordinate testing across multiple environments, UAT must be integrated with Microsoft Azure DevOps. You need to configure Business process modeler (BPM) and Azure DevOps to complete user acceptance testing. Which three actions should you perform? Each correct answer presents a complete solution. NOTE: Each correct selection is worth one point.

- A. Synchronize the BPM library with Azure DevOps
- B. Create a test pass and test case in Azure DevOps
- C. Upload saved Task recorder files to BPM
- D. Create a test plan and test suites in Azure DevOps
- E. Synchronize the BPM library with a Git repo
- F. Upload saved Task recorder files to Azure DevOps

Answer: ACD

Explanation:

References:
<https://docs.microsoft.com/en-us/dynamics365/unified-operations/dev-itpro/lifecycle-services/using-taskguides-and-bpm-to-create-user-acceptance-tests>

NEW QUESTION 61

- (Exam Topic 2)

You set up a new instance of Dynamics 365 for Finance and Operations. The IT department needs to track requisitions for new equipment by using unique identifiers. Due to regulatory requirements, the unique identifiers must not have missing values. Everyone in the organization will make requisitions using the unique identifiers.

You need to establish unique identifiers.
What application features should you use? To answer, select the application feature to match the parameter in the answer area.
NOTE: Each correct selection is worth one point.

Answer Area

| Parameter | Application feature |
|----------------------------|--|
| System entity | <div>Number sequences</div> <div>Case management</div> <div>Workflow system</div> <div>Purchasing policy</div> |
| Type for a prefix of ITreq | <div>Alphanumeric segment</div> <div>Constant segment</div> |
| Scope | <div>Legal entity</div> <div>Company</div> <div>Shared</div> |
| Type | <div>Non-continuous</div> <div>Continuous</div> |

- A. Mastered
- B. Not Mastered

Answer: A

Explanation:
Reference:
<https://docs.microsoft.com/en-us/dynamics365/unified-operations/fin-and-ops/organization-administration/numb>

NEW QUESTION 65

- (Exam Topic 2)
You set up Dynamics 365 for Finance and Operations. Your organization will use email with the application.
You need to ensure that email will be sent using typical secure settings. What setting must be set as specified?

- A. In-place hold and Litigation hold are enabled.
- B. In-place eDiscovery is enabled,
- C. The SMTP port field is set to 587.
- D. Retention policies are enabled.

Answer: C

NEW QUESTION 69

- (Exam Topic 2)
A company plans to implement the case management feature of Dynamics 365 for Finance and Operations. You need to describe the scenarios in which you should use the case management tool. Which three scenarios should be used? Each correct answer presents a complete solution. NOTE: Each correct selection is worth one point.

- A. Since case activities can be assigned to different people, a case can use workflow.
- B. Although the sales module already has return-order functionality, case management is still used for customer returns and claims.
- C. Knowledge articles used by case management are associated with specific functional modules.
- D. A human resources generalist can use the case management tool to track employee interactions, even though the department stores confidential information about employees.
- E. A case can be used to track both external and internal issues.

Answer: CDE

Explanation:
References:
<https://docs.microsoft.com/en-us/dynamics365/unified-operations/fin-and-ops/organization-administration/cases>

NEW QUESTION 74

- (Exam Topic 2)
You are a Dynamics 365 for Finance and Operations systems analyst.
A user configures an alert for purchase orders that have a delivery date of two weeks away. However, batch alerts are not being sent.
You need to troubleshoot why alerts are not processing.
What two actions may be the cause for alerts not being sent? Each correct answer presents a complete solution. NOTE: Each correct selection is worth one point.

- A. The date format in the Dynamics 365 tenant does not match the format in the client device-CD
- B. A batch processing window may be set up for that batch job.
- C. The change-based alert has expired.
- D. There may not be a batch server assigned to the batch job.

Answer: CD

Explanation:

Reference:

<https://community.dynamics.com/ax/b/shafeealabadiaxtutorials/posts/ax-2012-alert-management-part-ii-due-dat>

NEW QUESTION 75

- (Exam Topic 2)

You are a systems administrator at a company that has implemented Dynamics 365 for Finance and Operations.

New employees are starting at the company.

You need to extend the electronic signatures functionality to them.

Which two actions should you perform? Each answer presents part of the solution.

NOTE: Each correct selection is worth one point.

- A. On the Email parameters page, specify that SSL is required
- B. Specify the user's email address
- C. In License configuration, enable Maintenance mode
- D. Select the Electronic signature check box

Answer: CD

Explanation:

Reference:

<https://docs.microsoft.com/en-us/dynamics365/unified-operations/fin-and-ops/organization-administration/tasks>

NEW QUESTION 79

- (Exam Topic 2)

Note: This question is part of a series of questions that present the same scenario. Each question in the series contains a unique solution that might meet the stated goals. Some question sets might have more than one correct solution, while others might not have a correct solution.

After you answer a question in this section, you will NOT be able to return to it. As a result, these questions will not appear in the review screen.

You are a Dynamics 365 for Finance and Operations system administrator. You have a test environment that is used by several people at any given time.

You create a new data entity in your development and migrate the code to the test environment. In the test environment, you are unable to find the data entity in the list.

You need to locate the data entity. Solution: Reopen the client browser. Does the solution meet the goal?

- A. Yes
- B. No

Answer: B

NEW QUESTION 84

- (Exam Topic 2)

You are a Dynamics 365 for Finance and Operations system administrator. A user reports that the system is getting gradually slower.

You need to identify the user's processes and slow-running queries and rebuild any fragmented indexes. Which features should you use? To answer, select the appropriate configuration in the answer area. NOTE: Each correct selection is worth one point.

Answer Area

| Activity | Environment monitoring tool |
|---|---|
| Instruct the user to validate the processes using a given session ID. | User interaction User load Activity load User activity |
| View the call stack for any slow-running queries. | User interaction Raw logs Activity load User load |
| Rebuild a fragmented index. | SQL Insights Environment activity Environment health User load |

- A. Mastered
- B. Not Mastered

Answer: A

Explanation:

Answer Area

Activity

Instruct the user to validate the processes using a given session ID.

View the call stack for any slow-running queries.

Rebuild a fragmented index.

Environment monitoring tool

User interaction
User load
Activity load
User activity

User interaction
Raw logs
Activity load
User load

SQL Insights
Environment activity
Environment health
User load

NEW QUESTION 86

- (Exam Topic 2)

You manage a Dynamics 365 for Finance and Operations environment.

In preparation for being migrated into a new environment, data packages are being numbered in alignment with the default numbering formats in Lifecycle Services. A package is named 03.01.002.

You need to identify what this package contains. To answer, select the appropriate option in the answer area. NOTE: Each correct selection is worth one point.

| Segment | Component |
|---------|---|
| 03 | <div>The environment The module The data type The month</div> |
| 01 | <div>The module The month The sequence number The data type</div> |
| 002 | <div>The sequence number The data package version The data entity The data type reference</div> |

- A. Mastered
B. Not Mastered

Answer: A

Explanation:

| Segment | Component |
|---------|---|
| 03 | <div>The environment The module The data type The month</div> |
| 01 | <div>The module The month The sequence number The data type</div> |
| 002 | <div>The sequence number The data package version The data entity The data type reference</div> |

NEW QUESTION 90

- (Exam Topic 2)

You are a Dynamics 365 for Finance and Operations systems administrator.

Microsoft recently released a new feature for public preview that would add significant value to your organization without licensing adjustments.

You need to enable the feature.

Where can you enable the preview feature?

- A. Solution management
B. Lifecycle Services
C. Organizational administration module
D. experience.dynamics.com
E. System administration module

Answer: E

NEW QUESTION 91

- (Exam Topic 2)

You are a Dynamics 365 for Finance and Operations system administrator.

A user is reporting an issue with the Sales Order form. The UI for the form is not loading properly, and there are some performance issues. The object was working fine until the most recent update release. The user has personalized this form, is using Microsoft Internet Explorer 11, and no other users are reporting issues. You need to resolve the issue. What should you do?

- A. Export, delete, then reimport the usage data for the sales form object.
- B. Disable and then re-enable the user.
- C. Reset all the usage data for the user.
- D. Reimport and compile the AOT object causing issues.

Answer: C

NEW QUESTION 92

- (Exam Topic 2)

Note: This question is part of a series of questions that present the same scenario. Each question in the series contains a unique solution that might meet the stated goals. Some question sets might have more than one correct solution, while others might not have a correct solution.

After you answer a question in this section, you will NOT be able to return to it. As a result, these questions will not appear in the review screen.

You are developing a file-based integration to Dynamics 365 for Finance and Operations.

Microsoft Excel files with 15,000 or more records need to be imported into the system periodically by individual users. The records need to be imported in full within a 5-minute approved window.

You need to determine how to accomplish the import into the system. Solution: Import the data by using the recurring data integrations API. Does the solution meet the goal?

- A. Yes
- B. No

Answer: B

NEW QUESTION 93

.....

Thank You for Trying Our Product

We offer two products:

1st - We have Practice Tests Software with Actual Exam Questions

2nd - Questions and Answers in PDF Format

mb-300 Practice Exam Features:

- * mb-300 Questions and Answers Updated Frequently
- * mb-300 Practice Questions Verified by Expert Senior Certified Staff
- * mb-300 Most Realistic Questions that Guarantee you a Pass on Your FirstTry
- * mb-300 Practice Test Questions in Multiple Choice Formats and Updatesfor 1 Year

100% Actual & Verified — Instant Download, Please Click
[Order The mb-300 Practice Test Here](#)