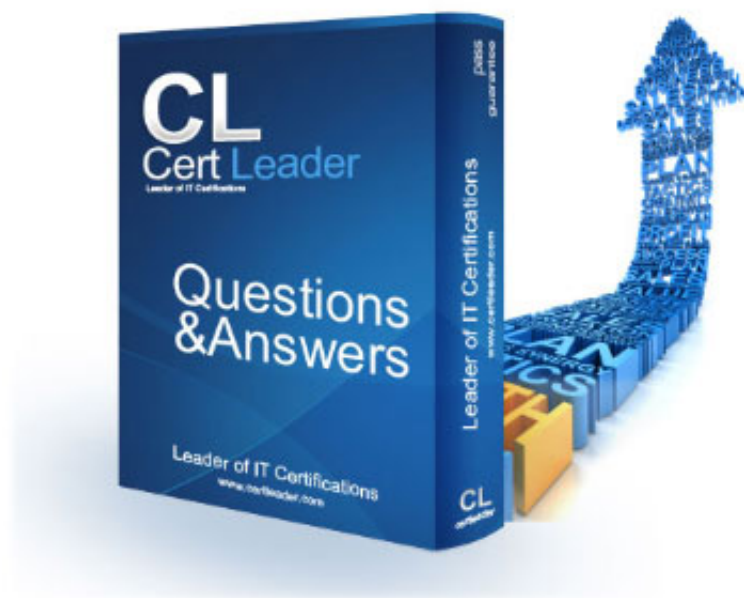


## 200-901 Dumps

# Developing Applications and Automating Workflows using Cisco Core Platforms (DEVASC)

<https://www.certleader.com/200-901-dumps.html>



**NEW QUESTION 1**

Which REST architectural constraint indicates that no client context should be stored on the server between requests?

- A. stateless
- B. uniform interface
- C. cacheable
- D. client-server

**Answer:** A

**NEW QUESTION 2**

Refer to the exhibit.

DELETE	Create
GET	Read
PATCH	Update
POST	Update
PUT	Delete

A REST API return this JSON output for a GET HTTP request, Which has assigned to a variable called “vegetables” Using python, which output is the result of this command?

DELETE	POST
GET	GET
PATCH	PATCH
POST	PUT
PUT	DELETE

- A. Lettuce
- B. Kiwi
- C. ['kiwi', 'grape']
- D. {'color': 'green', 'items': ['kiwi', 'grape']}

**Answer:** B

**NEW QUESTION 3**

Which two use cases are supported by Meraki APIs? (Choose two.)

- A. Retrieve live streams from a Meraki Camera.
- B. Build a custom Captive Portal for Mobile Apps.
- C. Configure network devices via the Dashboard API.
- D. Build location-aware apps from Wi-Fi and LoRaWAN devices.
- E. Deploy applications onto the devices.

**Answer:** BC

**NEW QUESTION 4**

Refer to the exhibit.

```
curl -X [ ] -H " [ ]: application/json" \
-H " [ ]: Bearer AbCdEf123456" https://localhost/api/myresource
```

Which two statement describe the configuration of the Ansible script is run? (Choose two.)

- A. Traffic on port 0/2 and 0/3 is connected to port 0/6.
- B. Traffic from ports 0/2 to 0/5 can flow on port 0/1 due to the trunk.
- C. Traffic can flow between ports 0/2 to 0/5 due to the trunk on port 0/1.
- D. GigabitEthernet0/2 and GigabitEthernet0/3 are access ports for VLAN 6.
- E. GiabitEthernet0/1 is left unconfigured.

**Answer: BD**

#### NEW QUESTION 5

Which product provides network controller-level management features?

- A. Cisco DNA Center
- B. Cisco NX-OS
- C. Cisco UCS Manager
- D. Cisco ISE

**Answer: A**

#### NEW QUESTION 6

Which statement about authentication a RESTCONF API session with a router that runs Cisco IOS XE software is true?

- A. OAuth must be used.
- B. A token must be retrieved and the associated string must be embedded in the X-Auth-Token header.
- C. Basic authentication must be used.
- D. No authentication is required.

**Answer: C**

#### NEW QUESTION 7

What are two benefit of managing network configuration via APIs? (Choose two.)

- A. configuration on devices becomes less complex
- B. more security due to locking out manual device configuration
- C. increased scalability and consistency of network changes
- D. eliminates the need of legacy management protocols like SNMP
- E. reduction in network changes performed manually

**Answer: CE**

#### NEW QUESTION 8

What is the outcome of executing this command?

```
git clone ssh://john@exmaple.com/path/to/my-project_git
```

- A. Creates a local copy of a repository called "my project"
- B. Creates a copy of a branch called "my project"
- C. Initiates a new Git repository called "my project"
- D. Creates a new branch called "my project"

**Answer: A**

#### NEW QUESTION 9

Refer to the exhibit.

```
{
  "items": [
    {
      "kind": "object#NetworkObj",
      "selfLink": "https://10.201.230.5/api/objects/networkobjects/db01",
      "name": "db01",
      "host": {
        "kind": "IPv4address",
        "value": "172.16.0.11"
      },
      "objectId": "db01"
    }
  ]
}
```

What is the action of the Bash script that is shown?

- A. The script waits until input is entered
- B. If the directory exists, the script goes into it until there is no directory with the same name, then it creates a new directory.
- C. The script goes into the directory called "\$ndir" and makes a new directory called "\$ndir"
- D. The script waits until input is entered, then it goes into the directory entered and creates a new directory with the same name.
- E. For all directories in the current folder
- F. The script goes into directory and makes a new directory.

**Answer: A**

**NEW QUESTION 10**

A developer is writing an application that a REST API and the application requires a valid from the API which element of the response is used in the conditional check?

- A. URL
- B. Status code
- C. Link
- D. Body
- E. Headers

**Answer:** B

**NEW QUESTION 10**

Refer to the exhibit.

```
A. [ {  
  "books": {  
    "science": {  
      "biology": "10.00",  
      "geology": "9.00",  
      "chemistry": "8.00"  
    },  
    "math": {  
      "calculus": "20.00",  
      "algebra": "12.00"  
    }  
  }  
}]
```

```
B. {  
  "books": [  
    "science": {  
      "biology": "10.00",  
      "geology": "9.00",  
      "chemistry": "8.00"  
    },  
    "math": {  
      "calculus": "20.00",  
      "algebra": "12.00"  
    }  
  ]  
}
```

Which python data structure does my\_json contain?

- A. List
- B. Json
- C. Map
- D. Dict

**Answer:** D

**NEW QUESTION 11**

Refer to the exhibit.



**URL:** https://<ASA\_IP>/api/access/global/rules

**Method:** POST

**Payload:**

```

{
  "destinationAddress": {
    "kind": "IPv4Address",
    "value": "10.1.1.1"
  },
  "remarks": [ ],
  "active": true
  "permit": true,
  "sourceAddress": {
    "kind": "IPv4Address",
    "value": "192.168.1.1"
  }
}

```

**Response Status Code:** 400 Bad Request

**“messages”:** [{“level”:“Error”,“code”:“JSON-PARSE-ERROR”,“details”:“Unexpected character (‘\” (code 34))”

What caused the error in this API request?

- A. The API resource does not support the POST operation
- B. The API resource does not support JSON format payloads.
- C. The submitted JSON payload includes a field that is not supported by the API resource.
- D. The submitted JSON payload has a formatting issue

Answer: D

#### NEW QUESTION 12

Which two NETCONF operations cover the RESTCONF GET operation? (Choose two.)

- A. <get>
- B. <edit>
- C. <get-update>
- D. <modify-config>
- E. <get-config>

Answer: AE

#### NEW QUESTION 17

Which platform has an API that be used to obtain a list of vulnerable software on user devices?

- A. Cisco Umbrella
- B. Cisco Firepower
- C. Cisco Identity Services Engine
- D. Cisco Advanced Malware Protection

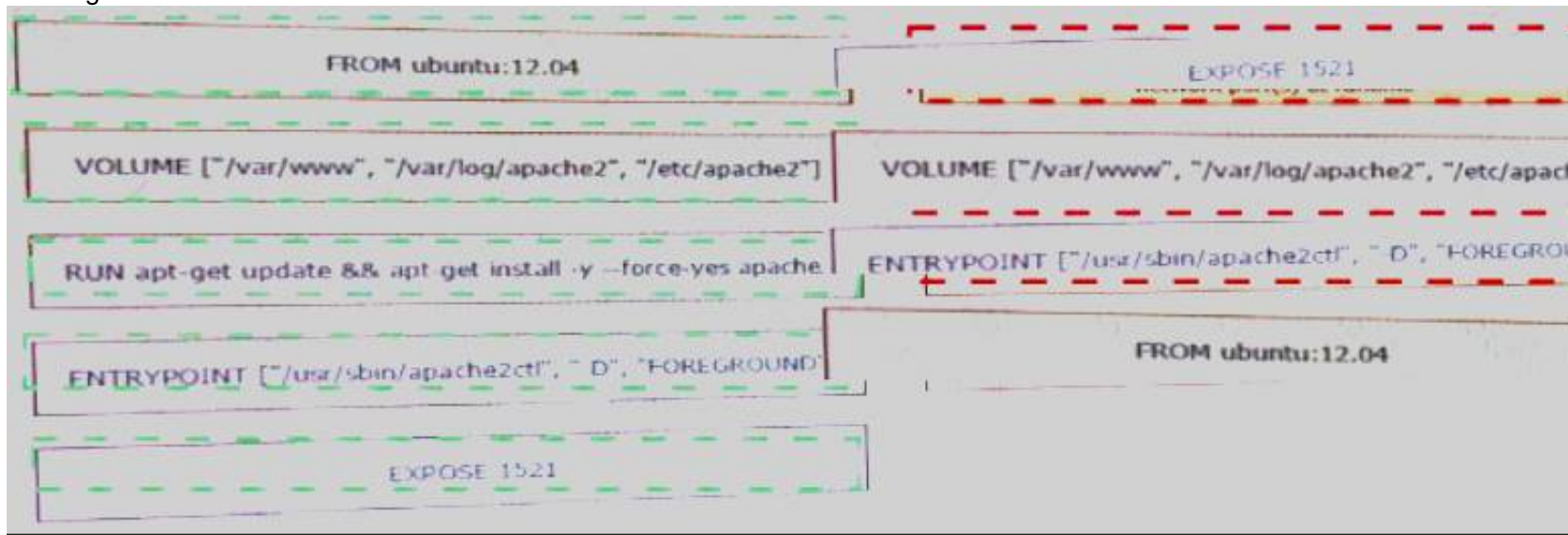
Answer: D

#### NEW QUESTION 19

Refer to the exhibit.

FROM ubuntu:12.04	informs Docker that the container listens on the specified network port(s) at runtime
VOLUME ["/var/www", "/var/log/apache2", "/etc/apache2"]	creates a mount point with the specified name
RUN apt-get update && apt-get install -y --force-yes apache2	configures a container that runs as an executable
ENTRYPOINT ["/usr/sbin/apache2ctl", "-D", "FOREGROUND"]	must be the first instruction in the Docker file
EXPOSE 1521	

Fill in the blank to complete the query parameter and value so that the result set is returned in reverse chronological order (most recent first) based on when message were entered.



- A. Mastered
- B. Not Mastered

**Answer:** A

**Explanation:**

?sortBy=lastactivity

```
<books>
  <science>
    <biology>10.00</biology>
    <geology>9.00</geology>
    <chemistry>8.00</chemistry>
  </science>
  <math>
    <calculus>20.00</calculus>
    <algebra>12.00</algebra>
  </math>
</books>
```

#### NEW QUESTION 22

Which action resolves a 401 error in response to an HTTP GET that is issued to retrieve statement using RESTCONF on a CSR 1000V?

- A. Change the HTTP method to PUT.
- B. Change the transport protocol to HTTPS.
- C. Check the MIMF types in the HTTP headers.
- D. Check the authentication credentials.

**Answer:** D

#### NEW QUESTION 27

Which CI/CD tool is an automation tool used to build, test, and deploy software?

- A. Nagios
- B. Gradle
- C. Jenkins
- D. Git

**Answer:** C

#### NEW QUESTION 28

Which type of HTTP method is used by the Meraki nad webex teams APIs to send webhook notifications?

- A. HTTP GET
- B. HTTP PUT
- C. HTTP HEAD
- D. HTTP POST

**Answer:** D

#### NEW QUESTION 30

Which status code is used by a REST API to indicate that the submitted payload is incorrect?

- A. A.-400B.403C.405D.429

Answer: A

#### NEW QUESTION 35

Which two types of NAT are used in a network? (Choose two.)

- A. Static NAT
- B. Normal NAT
- C. Multicast NAT
- D. Dynamic NAT
- E. Router NAT

Answer: AD

#### NEW QUESTION 37

Refer to the exhibit.

### List Rooms

List rooms.

The `title` of the room for 1:1 rooms will be the display name of the other person.

By default, lists rooms to which the authenticated user belongs.

Long result sets will be split into **pages**.

GET `/v1/rooms`

### Query Parameters

Name	Description
<code>teamId</code> string	List rooms associated with a team, by ID.
<code>type</code> string	List rooms by tape. <i>Possible values: direct, group</i>
<code>sortBy</code> string	Sort results. <i>Possible values: id, lastactivity, created</i>
<code>max</code> number	Limit the maximum number of rooms in the response.  Default: <code>100</code>

Given the API documentation for the UCS SDK python class, UcsHandle, which code snippet creates a handle instance?

`HTTP GET /v1/rooms [ ]`

- A. Option A
- B. Option B
- C. Option C
- D. Option D

Answer: B

#### NEW QUESTION 41

What should a CI/CD pipeline aim to achieve?

- A. to allow manual testing before deployment
- B. to require minimal manual interaction
- C. to support new deployments on a fixed monthly schedule
- D. to provide a documented process for feedback

Answer: A

#### NEW QUESTION 43

On which port does NETCONF operate by default?

- A. 23
- B. 443
- C. 822
- D. 830



Answer: D

#### NEW QUESTION 46

Drag and drop the requests from the left into the correct order on the right to create and check the path trace between two devices using Cisco DNA center API.

HTTP GET /v1/rooms ?sortBy=lastactivity

- A. Mastered
- B. Not Mastered

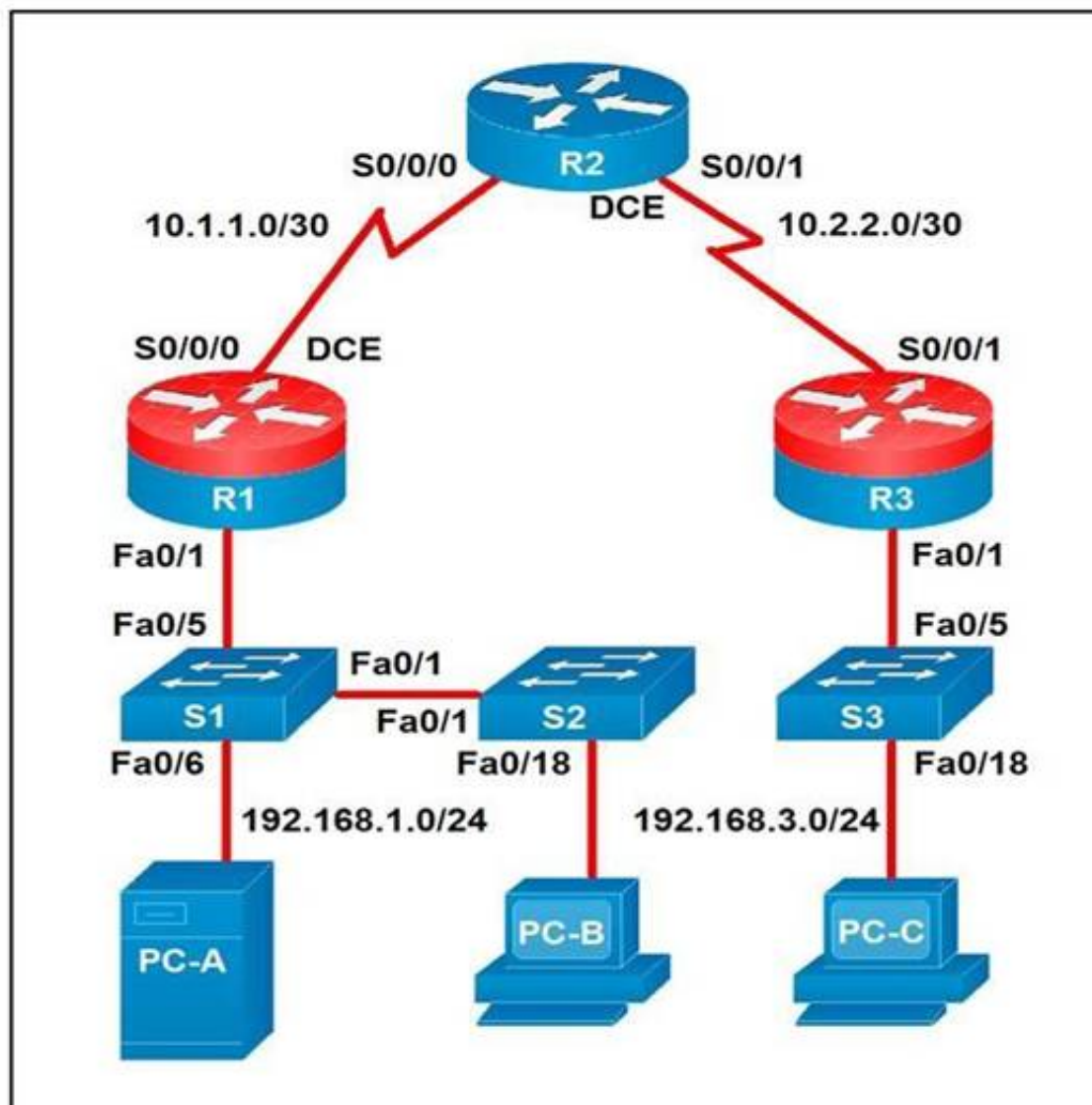
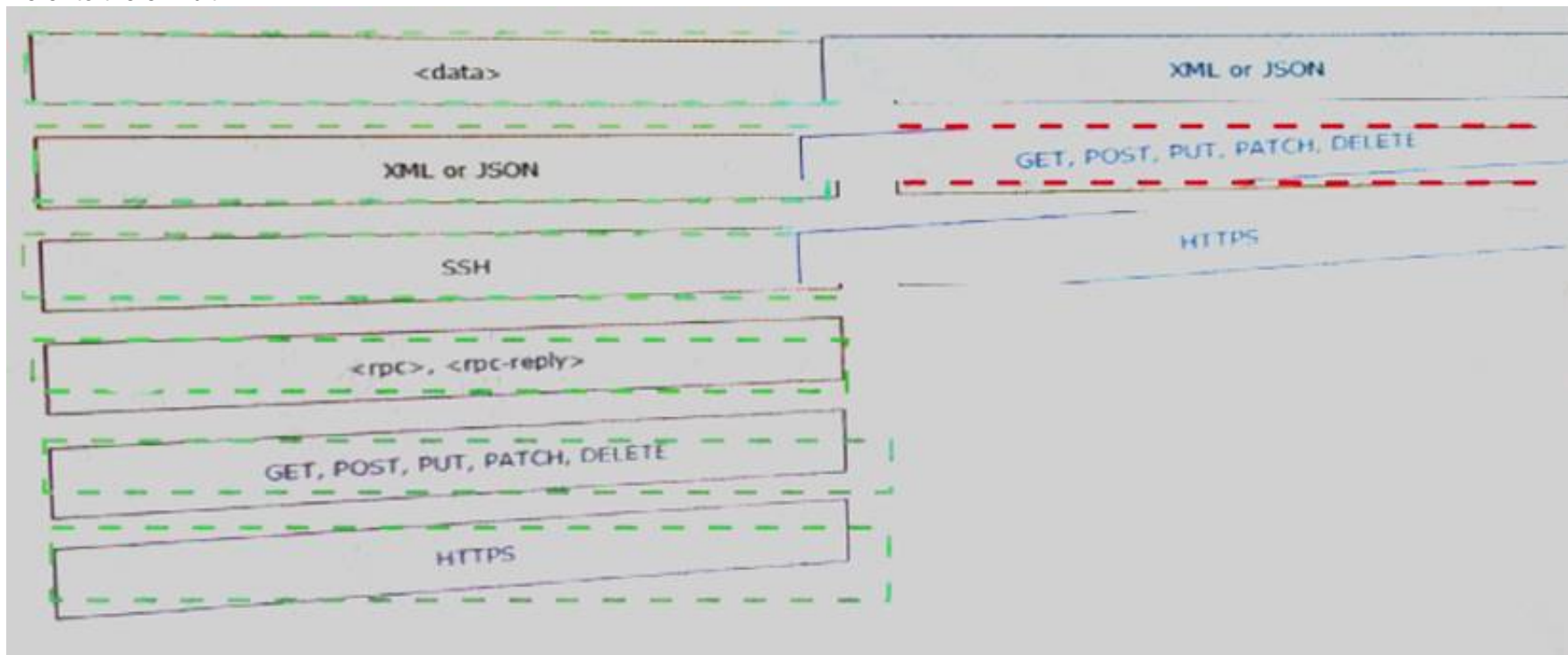
Answer: A

#### Explanation:

1 – C, 2 – D, 3 – B, 4 - A

#### NEW QUESTION 48

Refer to the exhibit.



A developer is troubleshooting an API with the given API with the given API documentation and cURL command. What is the cause of this problem?

- A. The user is not allowed to post messages from their account
- B. The request body is missing or incomplete
- C. The API token specified is expired
- D. The authorization header is missing or incomplete

Answer: C



### NEW QUESTION 52

Before which process is code review performed when version control is used?

- A. committing code
- B. branching code
- C. merge of code
- D. checkout of code

**Answer:** C

### NEW QUESTION 53

Drag and drop elements of the RESTCONF protocol stack from the left onto the correct description on the right. Not all elements on the left are used.

```
List the networks in a Meraki organization:

GET https://api.meraki.com/api/v0/organizations/<org_id>/networks
Response code: 200
Response body: [ {
  "id": <network_id>,
  "name": "Test Network",
  "organization_id": <new_org_id>,
  "type": "wireless",
  "timeZone": "America/Los_Angeles",
  "tags": " test "
} ]
```

- A. Mastered
- B. Not Mastered

**Answer:** A

#### Explanation:

1 – B, 2 – E, 3 - F

### NEW QUESTION 58

Drag and drop the HTTP methods from the left onto their generally accepted corresponding create, read, update, and delete operations on the right.

```
"organization_id": <new_org_id>,
"type": "wireless",
"timeZone": "America/Los_Angeles",
"tags": " test "
} ]
```

t. Fill in the blanks to complete the cURL command to list the networks in the Meraki organization with an Id of 384279060:

```
meraki.com/api/v0/organizations [ ] /384279060 [ ] /networks [ ]
-X-API-Key: 'Smeraki_api_key'
```

- A. Mastered
- B. Not Mastered

**Answer:** A

#### Explanation:

1 – D, 2 – B, 3 – C, 4 – E, 5 – A

### NEW QUESTION 61

An application calls a REST API and expects a result set of more than 550 records, but each time the call is made, only 25 are returned. Which feature limits the amount of data that is returned by the API?

- A. pagination
- B. payload limit
- C. rate limiting
- D. service timeouts

**Answer:** A

### NEW QUESTION 63

Which task is performed because the test-driven development approach is being used?

- A. testing existing software before developing new code
- B. refactoring code that is covered by existing tests
- C. writing code without committing any coding violations
- D. creating test scenarios based on continuous development

**Answer:** B

#### NEW QUESTION 67

Which Cisco DevNet resource allows access to products in a development lab to explore, learn, and build application that use Cisco APLs?

- A. DevNet communities
- B. DevNet code Exchange
- C. DevNet Automation Exchange
- D. DevNet sandbox

**Answer:** D

#### NEW QUESTION 69

What is the purpose of a MAC address?

- A. To uniquely identify a router in a LAN
- B. To uniquely identify a network interface in a LAN
- C. To uniquely identify a device on the internet
- D. To uniquely identify a switch in a LAN

**Answer:** B

#### NEW QUESTION 70

Which device is a system that monitors and controls incoming and outgoing network traffic based on predetermined security rules?

- A. Switch
- B. Router
- C. Firewall
- D. Load balancer

**Answer:** C

#### NEW QUESTION 72

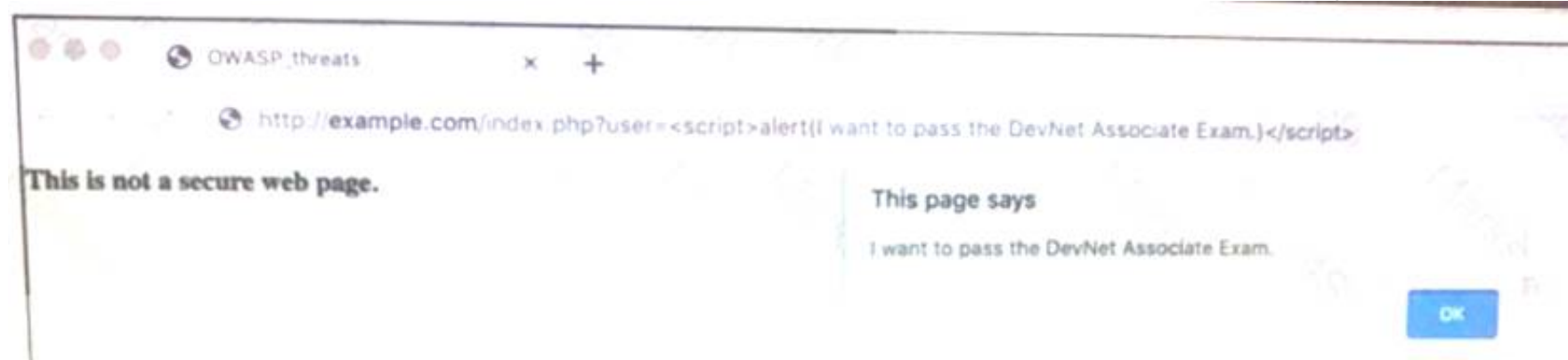
Which principle is a value from the manifesto for Agile software development?

- A. adhering to a plan over responding to requirements
- B. detailed documentation over working software
- C. processes and tools over teams and inter actions
- D. customer collaboration over contract negotiation

**Answer:** D

#### NEW QUESTION 74

Fill in the blanks to complete the cURL command that invokes a RESTful API to retrieve a resource in JSON format using OAuth.



```
curl -X _____ -H " _____: application/json" \
-H " _____: Bearer AbCdEf123456" https://localhost/api/myresource
```

- A. Mastered
- B. Not Mastered

**Answer:** A

#### Explanation:

See the solution below.

```
<books>
  <science>
    <biology>10.00</biology>
    <geology>9.00</geology>
    <chemistry>8.00</chemistry>
  </science>
  <math>
    <calculus>20.00</calculus>
    <algebra>12.00</algebra>
  </math>
</books>
```

**NEW QUESTION 79**

Refer to the exhibit.

```
{
  "books": [
    "science", {
      "biology": "10.00",
      "geology": "9.00",
      "chemistry": "8.00"
    },
    "math", {
      "calculus": "20.00",
      "algebra": "12.00"
    }
  ]
}
```

Drag and drop the variables from the left onto the item numbers on the right that match the missing assignments in the exhibit.

```
{
  "books": [
    "science": {
      "biology": "10.00",
      "geology": "9.00",
      "chemistry": "8.00"
    },
    "math": {
      "calculus": "20.00",
      "algebra": "12.00"
    }
  ]
}
```

- A. Mastered
- B. Not Mastered

**Answer:** A

**Explanation:**

1 – A, 2 – C, 3 – B

**NEW QUESTION 84**

Which two encoding formats do YANG interfaces support?

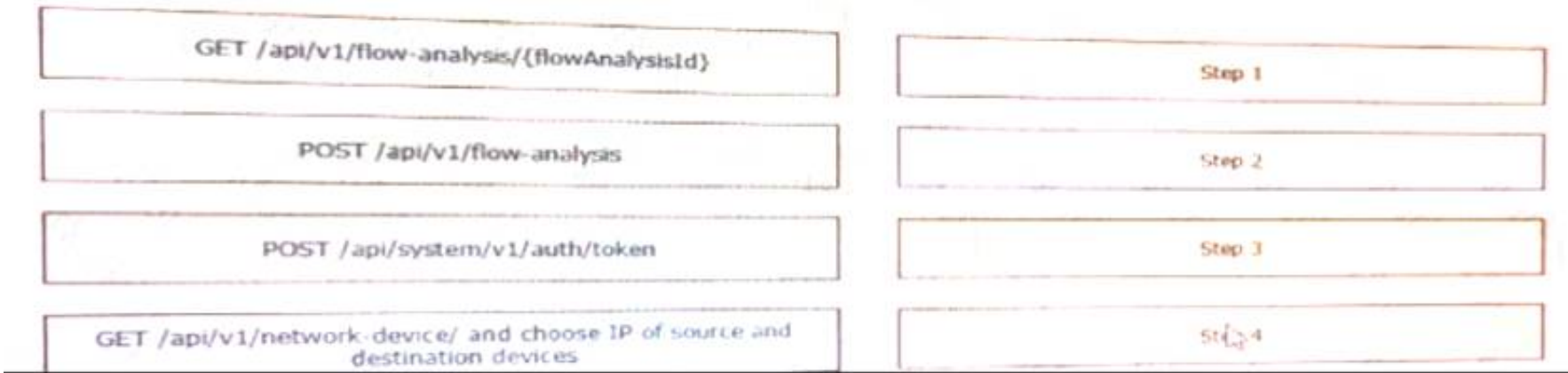
- A. JSON
- B. XML
- C. XHTML
- D. Plain text

E. BER

Answer: AB

NEW QUESTION 87

Refer to the exhibit.



The python interpreter and the Cisco python SDK are available by default in the Cisco NX-OS software. The SDK documentation shows how the cild() API can be used when working with working with JSON and XML. What are two effect of running the script? (Choose two.)

- A. configure interlace loopback 5
- B. issue shutdown on interface loopback 5
- C. show only the interfaces In the up status
- D. show only the interfaces in admin shut status
- E. show details for the TABLE interface

Answer: AC

NEW QUESTION 89

Which platform is run directly using a hypervisor?

- A. Virtual
- B. Bare metal systems
- C. Containers
- D. Applications

Answer: C

NEW QUESTION 93

Drag and drop the HTTP status codes from the left onto the correct descriptions on the right.



- A. Mastered
- B. Not Mastered

Answer: A

Explanation:

1 – B, 2 – D, 3 – A, 4 – C

NEW QUESTION 94

Fill in the blanks to complete the Python script to update the Webex Teams membership of a room using the Python requests library import requests



Response Headers	A
HTTP Request	B
HTTP Response	C
Request Payload	D
Request Headers	E
Response Payload	F

- A. Mastered
- B. Not Mastered

Answer: A

Explanation:  
request, headers , payload

NEW QUESTION 99  
Which two statements about JSON and XML are true? (Choose two.)

- A. JSON objects arc collection of key value paire.
- B. The syntax of JSON contains tags, elements, and attributes.
- C. JSON arrays are an unordered set of key value pairs.
- D. The syntax of XML contains tags, elements, and attributes.
- E. XML objects are collections of key-value pairs.

Answer: AD

NEW QUESTION 101  
Which two statements describe the traits of an asynchronous API call? (Choose two.)

- A. The order in which API calls return can be guaranteed
- B. A call to an API does not block the code, but rather it allows application processing to continue
- C. The end user can experience latency or performance lag while waiting for the API call to return
- D. Code execution blocks or waits for the call to an API to return.
- E. A callback function typically is used to process the response from an API call

Answer: BE

NEW QUESTION 104  
Drag and Drop the Bash commands from the left onto the correct actions on the right.



- A. Mastered
- B. Not Mastered

**Answer:** A

**Explanation:**

1 - d, 2 - i, 3 - e, 4 - a, 5 - j, 6 - b, 7 - g, 8 - h, 9 - c, 10 - f

**NEW QUESTION 106**

Which type of threat occur when an attacker can send hostile data to an interpreter within an application?

- A. Cross-site scripting
- B. Sensitive data exposure
- C. Broken authentication
- D. Injection

**Answer:** D

**NEW QUESTION 109**

A company has written a script that creates a log bundle from the Cisco DNA Center every day. The script runs without error and the bundles are produced. However, when the script is run during business hours, report poor voice quality of phones calls. What explains this behavior?

- A. The application is running in the Voice VLAN and causes delays and jitter in the subnet.
- B. The speed and duplex settings in Cisco DNA Center are sot incorrectly, which causes the transfer to be too slow.
- C. 9 The script is written in a low-level programming language where there is no memory safet
- D. This causes a buffer overflow and disruption on the network.
- E. Generating the logs causes the CPU on the network controller to spike, which causes delays m forwarding the voice IP packets.

**Answer:** D

**NEW QUESTION 111**

What is the Git command to delete a local branch named “experiment” without a warning?

- A. git branch -n experiment
- B. git branch -rm experiment
- C. git branch -f experiment
- D. git branch -D experiment

**Answer:** D

**NEW QUESTION 112**

What is the purpose of the Cisco VIRL software tool?

- A. To verify configurations against compliance standards
- B. To simulate and model networks
- C. To automate API workflows
- D. To test performance of an application

**Answer:** B

# NEW QUESTION 116

Refer to the exhibit.

List the clients that have used this network in the timespan	
HTTP REQUEST	
GET /networks/ {networkId}/clients	
PARAMETERS	
t0	The beginning of the timespan for the data. The maximum lookback period is 31 days from today.
timespan	The timespan for which the information will be fetched. If specifying timespan, do not specify parameter t0. The value must be in seconds and be less than or equal to 31 days. The default is 1 day.
perPage	The number of entries per page returned. Acceptable range is 3 – 1000. Default is 10.
startingAfter	A token used by the server to indicate the start of the page. Often this is a timestamp or an ID but it is not limited to those. This parameter should not be defined by client applications. The link for the first, last, prev, or next page in the HTTP Link header should define it.
endingBefore	A token used by the server to indicate the end of the page. Often this is a timestamp or an ID but it is not limited to those. This parameter should not be defined by client applications. The link for the first, last, prev, or next page in the HTTP Link header should define it.

The output of a unified diff when comparing two versions of a python script is shown. Which two “single\_ request \_ timeout ()”

base_url = https://api.meraki.com/api/v0"
network_id = "L_12345678910"
api_key = "1098hadpfsiapsf8ahf8ohp"
requests.<item 1> (
<item 2> + "<item 3>/" + /<item 4>, "<item 5>",
headers = {
"X-Cisco-Meraki-API-Key": "<item 6>",
"Content-Type": "<item 7>"
},
<item 8>={"<item 9>":"/<item 10>}}

- A. Option A
- B. Option B
- C. Option C
- D. Option D

Answer: BC

# NEW QUESTION 117

Package updates from a local server fail to download. However, the same updates work when a much slower external repository is used. Way are local updates failing?

- A. The update utility is trying to use a proxy to access the internal resource.
- B. The Internet connection is too slow.
- C. The Internet is down at the moment, which causes the local server to not be able to respond.
- D. The server is running out of disk space.

Answer: A

# NEW QUESTION 118

.....

## Thank You for Trying Our Product

\* 100% Pass or Money Back

All our products come with a 90-day Money Back Guarantee.

\* One year free update

You can enjoy free update one year. 24x7 online support.

\* Trusted by Millions

We currently serve more than 30,000,000 customers.

\* Shop Securely

All transactions are protected by VeriSign!

**100% Pass Your 200-901 Exam with Our Prep Materials Via below:**

<https://www.certleader.com/200-901-dumps.html>