

Exam Questions HPE6-A73

Aruba Certified Switching Professional Exam

<https://www.2passeasy.com/dumps/HPE6-A73/>



NEW QUESTION 1

Which AOS-CX switches support weighted fair queuing (WFQ)?

- A. Both 8320 and 8325
- B. Both 6300 and 6400
- C. 8400 only
- D. 6300 only

Answer: C

NEW QUESTION 2

An administrator wants to implement dynamic segmentation policies. The network consists of AOS-CX and Aruba gateways.

Which type of forwarding should the administrator implement for users that already connect via wireless, but will also be connecting on Ethernet switch ports?

- A. User-based tunneling (UBT)
- B. Port-based tunneling (PBT)
- C. Switch-to-switch tunneling (SST)
- D. Local switching

Answer: A

NEW QUESTION 3

What is correct regarding multicasting and AOS-CX switches?

- A. IGMP snooping is disabled, by default, on Layer-2 VLAN interfaces
- B. IGMP query functions are enabled, by default, on Layer-2 VLAN interfaces
- C. IGMP snooping is enabled, by default, on Layer-3 VLAN interfaces
- D. IGMP-enabled AOS-CX switches flood unknown multicast destinations

Answer: A

NEW QUESTION 4

An administrator of a company has concerns about upgrading the access layer switches. The users rely

heavily on wireless and VoIP telephony. Which is the best recommendation to ensure a short downtime for the users during upgrading the access layer switches?

- A. Install the in-service software upgrade (ISSU) feature with clustering enabled
- B. Install AOS-CX 6300 or 6400 switches with always-on POE
- C. Implement VSF on the AOS-CX access switches
- D. Implement VSX on the AOS-CX access switches

Answer: C

NEW QUESTION 5

What must a network administrator implement in order to run an NAE script on an AOS-CX switch?

- A. Deployment
- B. Schedule
- C. Plan
- D. Agent

Answer: D

NEW QUESTION 6

A company is implementing a new wireless design and needs it to support high availability, even during times of switch system upgrades. The solution will involve Aruba Mobility Controller (MC) and Aruba AP

connections requiring POE. Which campus AOS-CX switch solution and virtual switching should the company implement at the campus access layer?

- A. AOS-CX 6400 and VSX
- B. AOS-CX 6300 and VSF
- C. AOS-CX 8325 and VSF
- D. AOS-CX 8400 and VSX

Answer: B

NEW QUESTION 7

An administrator is managing a network comprised of AOS-CX switches deployed at the aggregation layer. The switches are paired in a VSX stack and run the OSPF routing protocol. The administrator is concerned about how long it takes for OSPF to converge when one of the VSX switches has to reboot.

What should the administrator do to speed up the OSPF convergence of the switch that is rebooting?

- A. Change the VSXISL link from an OSPF broadcast link point-to-point.
- B. Implement graceful restart on the VSX switches and their neighboring OSPF switches.
- C. Decrease the VSX initial synchronization timer on the two VSX switches.
- D. Define non-backbone areas on the VSX switches as totally stubby areas.

Answer:

B

NEW QUESTION 8

Which option correctly defines how to identify a VLAN as a voice VLAN on an AOS-CX switch?

- A. Switch(config)# port-access lldp-group <LLDP-group-name> Switch(config-lldp-group)# vlan <VLAN-ID>
- B. Switch(config)# port-access role <role-name> Switch(config-pa-role)# vlan access <VLAN-ID>
- C. Switch(config)# vlan <VLAN-ID> Switch(config-vlan-<VLAN-ID>)# voice
- D. Switch(config)# vlan <VLAN-ID> voice

Answer: C

NEW QUESTION 9

How does PIM build the IP multicast routing table to route traffic between a multicast source and one or more receivers?

- A. It uses the unicast routing table and reverse path forwarding (RPF)
- B. It uses IGMP and calculates a shortest path tree (SPT)
- C. It uses the shortest path first (SPF) algorithm derived from link state protocols
- D. It uses the Bellman-Ford algorithm derived from distance vector protocols

Answer: A

NEW QUESTION 10

An administrator wants to track what configuration changes were made on a switch. What should the administrator implement to see the configuration changes on an AOS-CX switch?

- A. AAA authorization
- B. Network Analysis Engine (NAE)
- C. AAA authentication
- D. VSX synchronization logging

Answer: B

NEW QUESTION 10

An administrator has an aggregation layer of 8325CX switches configured as a VSX pair. The administrator is concerned that when OSPF network changes occur, the aggregation switches will respond to the changes slowly, and this will affect network connectivity, especially VoIP calls, in the connected access layer switches. What should the administrator do on the aggregation layer switches to alleviate this issue?

D18912E1457D5D1DDCBD40AB3BF70D5D

- A. Implement route aggregation
- B. Implement bidirectional forwarding detection (BFD)
- C. Reduce the hello and dead interval timers
- D. Implement graceful restart

Answer: B

NEW QUESTION 14

When implementing deficit weighted round robin queuing, what importance does the weight value have?

- A. Prioritizing latency-sensitive traffic
- B. Queue priority in processing traffic
- C. Strict priority queue
- D. Percentage of interface bandwidth

Answer: B

NEW QUESTION 18

Examine the following ACL rule policies:

Permit traffic from 10.2.2.1 through 10.2.2.30 to anywhere

Permit traffic from 10.2.2.40 through 10.2.2.55 to anywhere

Deny all others

Based on this policy, place the following ACL rule statements in the correct order to accomplish the above filtering policy.

- A. deny ip 10.2.2.31 255.255.255.255 anypermit ip 10.2.2.40 255.255.255.248 anypermit ip 10.2.2.48 255.255.255.248 anydeny ip 10.2.2.32 255.255.255.224 anypermit ip 10.2.2.0 255.255.255.192 any
- B. permit ip 10.2.2.40 255.255.255.248 anypermit ip 10.2.2.48 255.255.255.248 anypermit ip 10.2.2.0 255.255.255.192 anydeny ip 10.2.2.31 255.255.255.255 anydeny ip 10.2.2.32 255.255.255.224 any
- C. deny ip 10.2.2.31 255.255.255.255 anydeny ip 10.2.2.32 255.255.255.224 anypermit ip 10.2.2.40 255.255.255.248 anypermit ip 10.2.2.48 255.255.255.248 anypermit ip 10.2.2.0 255.255.255.192 any
- D. deny ip 10.2.2.31 255.255.255.255 anypermit ip 10.2.2.40 255.255.255.248 anydeny ip 10.2.2.32 255.255.255.224 anypermit ip 10.2.2.48 255.255.255.248 anypermit ip 10.2.2.0 255.255.255.192 any

Answer: A

NEW QUESTION 22

The AOS-CX mobile app allows a network engineer or technician to perform which tasks? (Choose two.)

- A. Use NetEdit to manage switch configuration.
- B. Create a stack of AOS-CX switches.
- C. Transfer files between the switch and your mobile device.
- D. Securely access the switch using SSH.
- E. Schedule an operating system upgrade.

Answer: CD

NEW QUESTION 25

A network administrator is implementing OSPF, where there are two exit points. Each exit point has a stateful, application inspection firewall to implement company policies.

What would the best practice be to ensure that one firewall will see both directions of the traffic, preventing asynchronous connections in the network?

- A. Both ASBRs should define External Type 1 routes for the
- B. Both ASBRs should define External Type 1 routes for the
- C. Both ASBRs should define External Type 2 routes for the
- D. Both ASBRs should define External Type 2 routes for the

Answer: A

NEW QUESTION 30

Which concept is implemented using Aruba's dynamic segmentation?

- A. Root of trust
- B. Device fingerprinting
- C. Zero Touch Provisioning
- D. Colorless port

Answer: B

NEW QUESTION 31

A company has just purchased AOS-CX switches. The company has a free and open-source AAA solution. The company wants to implement access control on the Ethernet ports of the AOS-CX switches.

Which security features can the company implement given the equipment that they are using?

- A. Port-based tunneling
- B. Device fingerprinting
- C. Local user roles
- D. Downloadable user roles

Answer: D

NEW QUESTION 35

A company uses NetEdit to manage a network of 700 AOS-CX switches and approximately 1,000 other SNMP-capable devices.

Which management solution should the company use to monitor all the devices, as well as see a topology picture of how all the devices are connected together?

- A. NetEdit
- B. Aruba AirWave
- C. Aruba Activate
- D. Network Analysis Engine (NAE)

Answer: A

NEW QUESTION 38

An administrator creates an ACL rule with both the "count" and "log" option enabled. What is correct about the action taken by an AOS-CX switch when there is a match on this rule?

- A. By default, a summarized log is created every minute with a count of the number of matches
- B. Logging will not include certificate and TLS events, but counting will
- C. The "count" and "log" options are processed by the AOS-CX switch's hardware ASIC
- D. The total in the "log" record and the count could contain different rule matching statistics

Answer: D

NEW QUESTION 42

An administrator is defining a VSX LAG on a pair of AOS-CX switches that are defined as primary and secondary. The VSX LAG fails to establish successfully with a remote switch; however, after verification, the remote switch is configured correctly. The administrator narrows down the problem to the configuration on the AOS-CX switches.

What would cause this problem?

- A. Local optimization was not enabled on the VSX LAG
- B. The VSX LAG hash does not match the remote peer
- C. The VSX LAG interfaces are in layer-3 mode
- D. LACP was enabled in active mode on the VSX LAG

Answer: B

NEW QUESTION 43

Examine the commands entered on an AOS-CX switch:

```
switch(config)# pbr-action-list test1
switch(config-pbr-action-list-test1)# nexthop 1.1.1.1
switch(config-pbr-action-list-test1)# nexthop 2.2.2.2
switch(config-pbr-action-list-test1)# default-nexthop 9.9.9.9
switch(config-pbr-action-list-test1)# interface null
switch(config-pbr-action-list-test1)# exit
switch(config)# interface vlan 100
switch(config-if)# apply policy test1 routed-in
```

What is true regarding this configuration for traffic received on interface 100?

- A. The default next-hop address supersedes the two preceding next-hop addresses
- B. The traffic is always dropped if the next-hop addresses are unreachable
- C. The traffic will be routed with the IP routing table entries if the next-hop addresses are unreachable
- D. The next-hop address of 1.1.1.1 is overwritten by the next-hop address of 2.2.2.2

Answer: A

NEW QUESTION 45

Which statement is correct regarding ACLs and TCAM usage?

- A. Applying an ACL to a group of ports consumes the same resources as specific ACE entries
- B. Using object groups consumes the same resources as specific ACE entries
- C. Compression is automatically enabled for ASIC TCAMs on AOS-CX switches
- D. Applying an ACL to a group of VLANs consumes the same resources as specific ACE entries

Answer: B

NEW QUESTION 49

A network has two AOS-CX switches connected to two different service providers. The administrator is concerned about bandwidth consumption on the service provider links and learned that the service providers were using the company as a transit AS.

Which feature should the administrator implement to prevent this situation?

- A. Configure route maps and apply them to BGP
- B. Configure the two switches as route reflectors
- C. Configure a classifier policy to disable MED
- D. Configure bi-directional forwarding detection on both switches

Answer: A

NEW QUESTION 51

A network administrator wants to replace older access layer switches with AOS-CX 6300 switches. Which virtual switching technology can the administrator implement with this solution?

- A. Both VSF and VSX
- B. Only Backplane stacking
- C. Only VSF
- D. Only VSX

Answer: C

NEW QUESTION 53

An administrator has configured the following on an AOS-CX switch:

```
object-group ip address web-servers
10.1.12.2
10.1.12.3
exit
object-group port web-ports
eq 80
eq 443
```

What is the correct ACL rule configuration that would allow traffic from anywhere to reach the web ports on the two specified servers?

- A. access-list ip server 10 permit tcp any web-servers group web-ports
- B. access-list ip server 10 permit tcp any object-group web-servers object-group web-ports
- C. access-list ip server 10 permit tcp any group web-servers group web-ports
- D. access-list ip server 10 permit tcp any web-servers web-ports

Answer: D

NEW QUESTION 57

How is voice traffic prioritized correctly on AOS-CX switches?

- A. By defining device profiles with QOS settings
- B. By placing it in the strict priority queue
- C. By implementing voice VLANs
- D. By implementing weighted fair queueing (WFQ)

Answer: B

NEW QUESTION 59

An administrator is replacing the current access switches with AOS-CX switches. The access layer switches must authenticate user and networking devices connecting to them. Some devices support no form of authentication, and some support 802.1X. Some ports have a VoIP phone and a PC connected to the same port, where the PC is connected to the data port of the phone and the phone's LAN port is connected to the switch. Which statement is correct about this situation?

- A. 802.1X must be configured to work in fallback mode
- B. Device fingerprinting is required for authentication
- C. The client-limit setting for port access needs to be changed
- D. Device mode should be implemented

Answer: C

NEW QUESTION 60

A network engineer for a company with 896 users across a multi-building campus wants to gather statistics on an important switch uplink and create actions based on issues that occur on the uplink. How often does an NAE agent gather information from the current state database in regard to the uplink interfaces?

- A. Once every 60 seconds
- B. Once every 1 second
- C. Once every 30 seconds
- D. Once every 5 seconds

Answer: D

NEW QUESTION 64

A network administrator is installing NetEdit. In order for NetEdit to manage the AOS-CX switches in the network, what must be defined on the AOS-CX switches? (Choose two.)

- A. Enabling telnet
- B. Defining an admin user password
- C. Defining the https user-group
- D. Enabling the RESTful API for read and write access
- E. Enabling SFTP

Answer: BD

NEW QUESTION 69

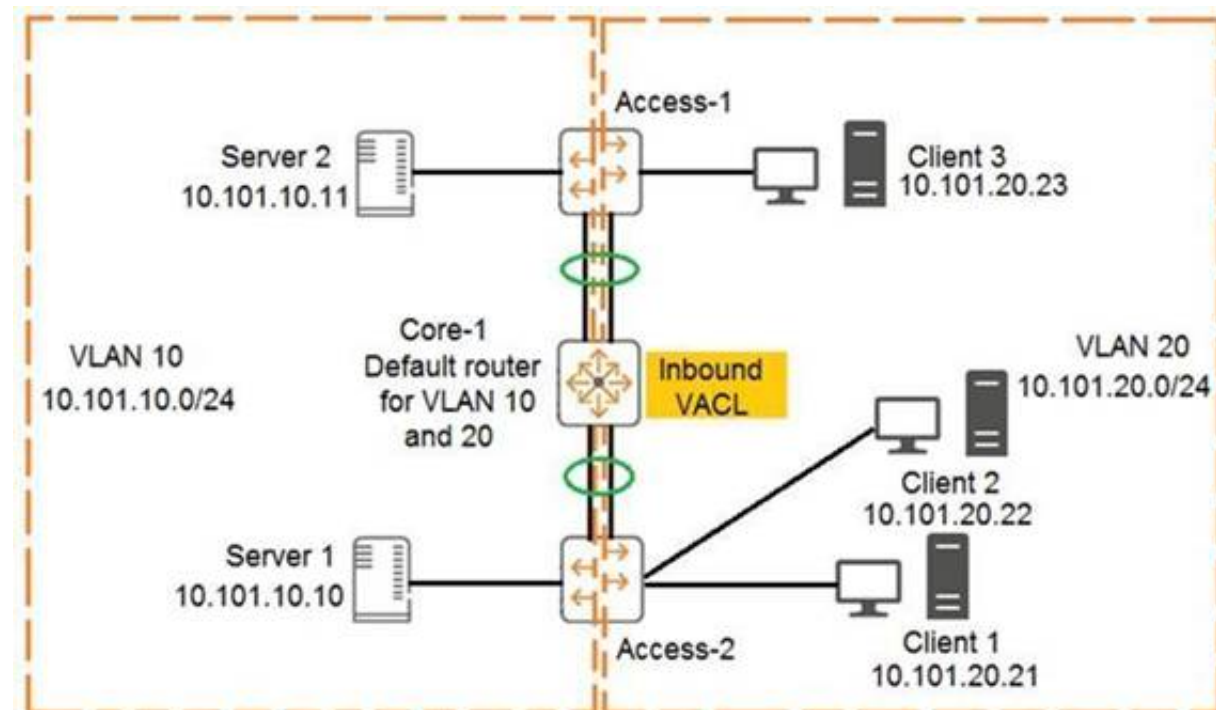
What are best practices when implementing VSX on AOS-CX switches? (Choose two.)

- A. The ISL lag should use the default MTU size.
- B. Timers should be left at their default values.
- C. The default system MAC addresses should be used.
- D. The keepalive connection should use a direct layer-3 connection.
- E. The ISL lag should use at least 10GbE links or faster.

Answer: BD

NEW QUESTION 70

Examine the network exhibit:



The ACL configuration defined on Core-1 is as follows:

```
Core-1(config)# access-list ip example
Core-1(config-acl-ip)# permit ip 10.101.20.21/32 any eq 23
Core-1(config-acl-ip)# permit ip 10.101.20.21/32 eq 23 any
Core-1(config-acl-ip)# exit
Core-1(config)# vlan 20
Core-1(config-if)# apply access-list example in
```

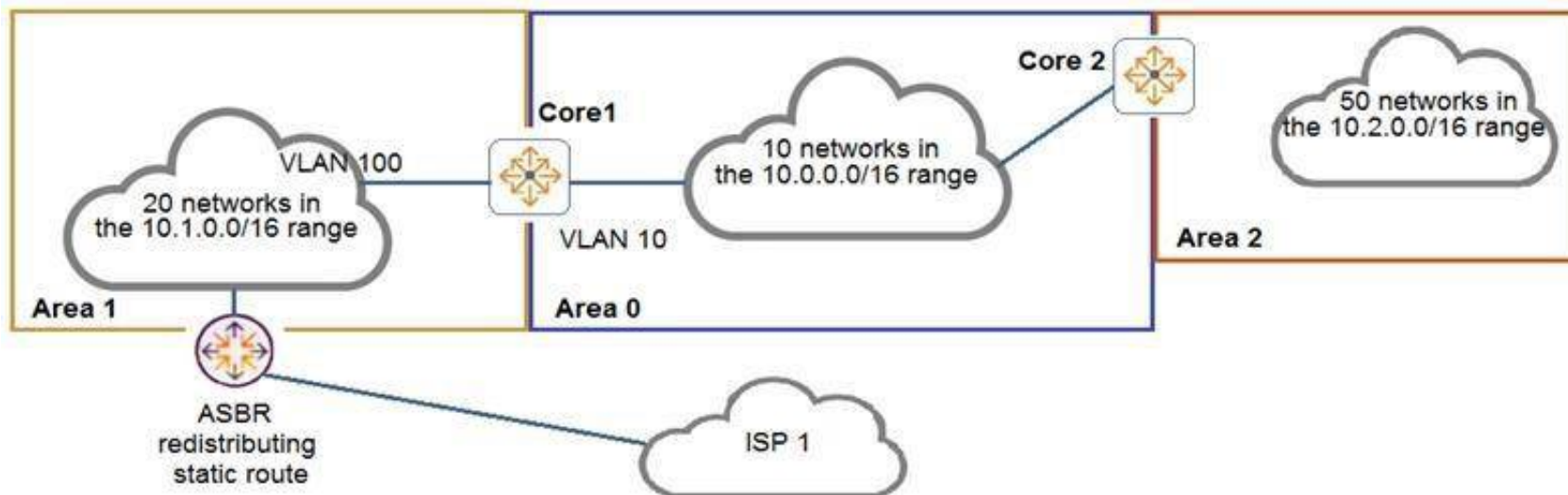
If telnet was being used, which device connection would be permitted and functional in both directions? (Choose two.)

- A. Client 3 to Client 2
- B. Client 1 to Client 2
- C. Server 2 to Client 2
- D. Server 1 to Client 1
- E. Client 1 to Client 3

Answer: BD

NEW QUESTION 72

Examine the network topology.



The network is configured for OSPF with the following attributes:

Core1 and Core2 and ABRs

Area 1 has 20 networks in the 10.1.0.0/16 range

Area 0 has 10 networks in the 10.0.0.0/16 range

Area 2 has 50 networks in the 10.2.0.0/16 range

The ASBR is importing a static route into Area 1

Core2 has a summary for Area 2: area 0.0.0.2 range 10.2.0.0/16 type inter-area

Here is the OSPF configuration performed on Core1:

```
Core1(config)# router ospf 1
Core1(config-router)# router-id 10.0.0.1
Core1(config-router)# passive-interface default
Core1(config-router)# area 0.0.0.0
Core1(config-router)# area 0.0.0.1 stub
Core1(config-router)# area 0.0.0.1 range 10.1.0.0/16 type inter-area
Core1(config-router)# area 0.0.0.2
Core1(config-router)# area 0.0.0.0 range 10.0.0.0/16 type inter-area
Core1(config-router)# exit
Core1(config)# interface vlan 10
Core1(config-if)# ip address 10.0.1.1/24
Core1(config-if)# ip ospf 1 area 0
Core1(config-if)# exit
Core1(config)# interface vlan 100
Core1(config-if)# ip address 10.1.1.1/24
Core1(config-if)# ip ospf 1 area 1
Core1(config-if)# exit
```

Based on the above information, what is correct?

- A. Area 0 has 13 routes
- B. Core1 has no OSPF routes
- C. Core1 has received one LSA Type 5 from the ASBR
- D. Area 1 has 23 routes

Answer: D

NEW QUESTION 74

A company has implemented 802.1X authentication on AOS-CX access switches, where two ClearPass servers are used to implement AAA. Each switch has the two servers defined. A network engineer notices the following command configured on the AOS-CX switches:

radius-server tracking user-name monitor password plaintext aruba123
 What is the purpose of this configuration?

- A. Implement replay protection for AAA messages
- B. Define the account to implement downloadable user roles
- C. Speed up the AAA authentication process
- D. Define the account to implement change of authorization

Answer: D

Explanation:

https://techhub.hpe.com/eginfolib/networking/docs/switches/K-KA-KB/16-01/5200-0122_access_security_guide/content/ch09s02.html

NEW QUESTION 79

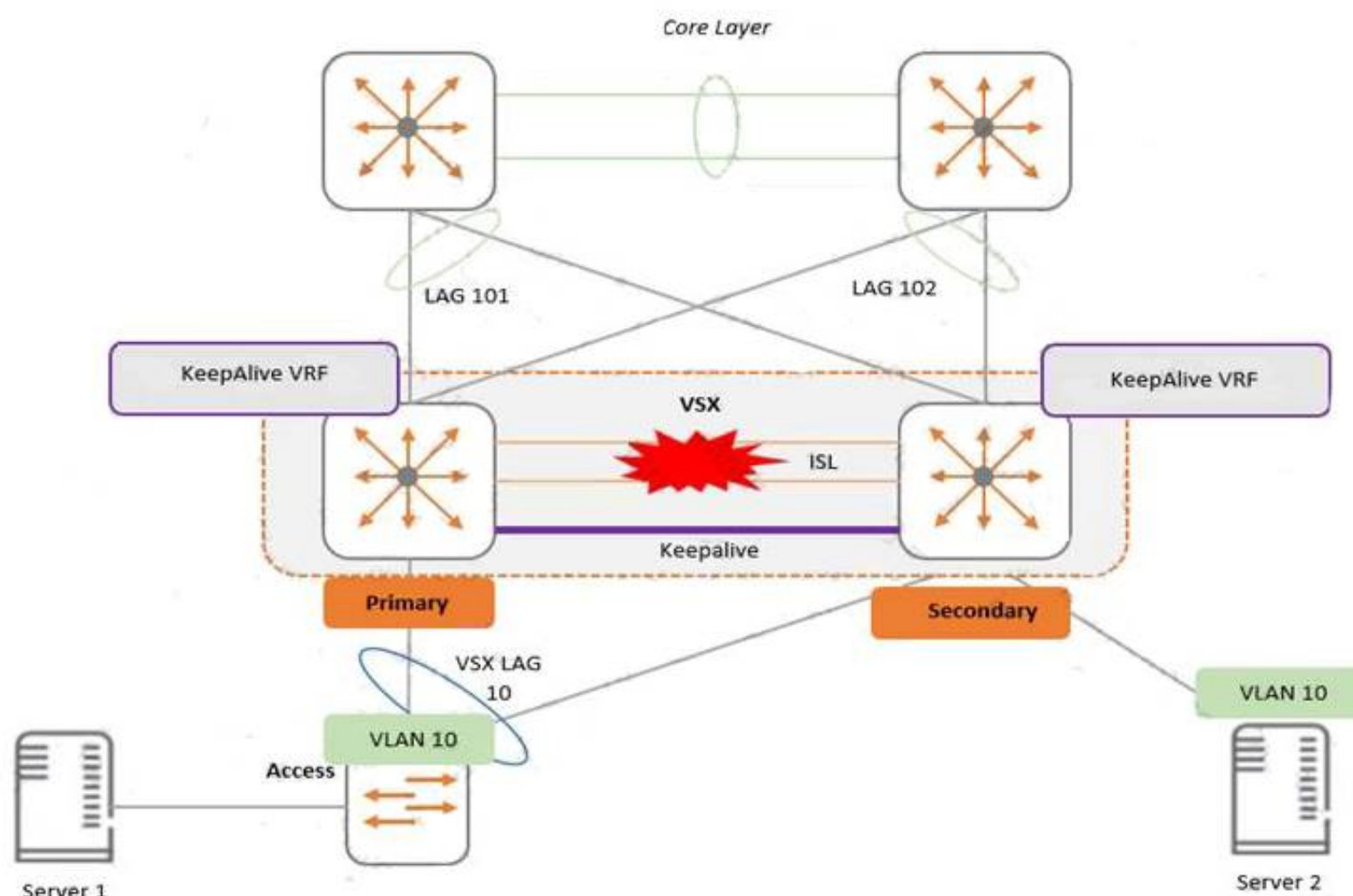
An administrator will be replacing a campus switching infrastructure with AOS-CX switches that support VSX capabilities. The campus involves a core, as well as multiple access layers. Which feature should the administrator implement to allow both VSX-capable core switches to process traffic sent to the default gateway in the campus VLANs?

- A. VRF
- B. VRRP
- C. IP helper
- D. Active gateway

Answer: D

NEW QUESTION 83

Examine the attached diagram



Two AOS-CX switches are configured for VSX at the access layer, where servers attached to them. An SVI interface is configured for VLAN 10 and serves as the default gateway for VLAN 10. The ISL link between the switches fails, but the keepalive interface functions. Active gateway has been configured on the switches. What is correct about access from the servers to the Core?

- A. Server 2 can successfully access the core layer via the keepalive link.
- B. Server 1 and Server 2 can communicate with each other via the core layer.
- C. Server 2 cannot access the core layer.
- D. Server 1 can access the core layer via both uplinks.

Answer: D

NEW QUESTION 85

A network administrator needs to replace an antiquated access layer solution with a modular solution involving AOS-CX switches. The administrator wants to leverage virtual switching technologies. The solution needs to support high-availability with dual-control planes. Which solution should the administrator implement?

- A. AOS-CX 8325
- B. AOS-CX 6300
- C. AOS-CX 6400
- D. AOS-CX 8400

Answer: C

NEW QUESTION 90

Examine the following AOS-CX switch configuration:

```
Switch(config-addgroup-ip)# object-group ip address servers
Switch(config-addgroup-ip)# 10.1.0.100
Switch(config-addgroup-ip)# 10.1.1.100
Switch(config-addgroup-ip)# exit
```

Which access control entries would allow web traffic to the web servers 10.1.0.100 and 10.1.1.100?

- A. permit tcp servers eq 80
- B. permit tcp any 10.1.0.100 0.0.1.0 eq 80
- C. permit tcp any 10.1.0.100/10.1.1.100 eq 80
- D. permit tcp any 10.1.0.100/255.255.254.255 eq 80

Answer: B

NEW QUESTION 94

What is correct regarding rate limiting and egress queue shaping on AOS-CX switches?

- A. Only a traffic rate and burst size can be defined for a queue
- B. Limits can be defined only for broadcast and multicast traffic
- C. Rate limiting and egress queue shaping can be used to restrict inbound traffic
- D. Rate limiting and egress queue shaping can be applied globally

Answer: A

NEW QUESTION 99

An administrator is implementing a multicast solution in a multi-VLAN network. Which statement is true about the configuration of the switches in the network?

- A. IGMP snooping must be enabled on all interfaces on a switch to intelligently forward traffic
- B. IGMP requires join and leave messages to graft and prune multicast streams between switches
- C. IGMP must be enabled on all routed interfaces where multicast traffic will traverse
- D. IGMP must be enabled on all interfaces where multicast sources and receivers are connected

Answer: B

NEW QUESTION 100

The company has just upgraded their access layer switches with AOS-CX switches and implemented an AAA solution with ClearPass. The company has become concerned about what actually connects to the user ports on the access layer switch. Therefore, the company is implementing 802.1X authentication on the AOS-CX switches. An administrator has globally enabled 802.1X, and has enabled it on all the access ports connected to user devices, including VoIP phones, security cameras, and wireless Aruba IAPs. Wireless users are complaining that they successfully authenticate to the IAPs; however, they do not have access to network resources. Previously, this worked before 802.1X was implemented on the AOS-CX switches.

What should the company do to solve this problem?

- A. Implement device-based mode on the IAP-connected AOS-CX switch ports.
- B. Implement local user roles and local forwarding on the AOS-CX switches.
- C. Implement downloadable user roles and user-based tunneling (UBT) on the AOS-CX switches.
- D. Implement AAA RADIUS change of authorization on the AOS-CX switches.

Answer: C

NEW QUESTION 105

What is correct regarding the operation of VSX and multicasting with PIM-SM routing configured?

- A. Each VSX peers runs PIM and builds its own group databas
- B. One of the VSX peers is elected as the designated router (DR) to forward multicast streams to a receiver VLAN
- C. Each VSX peers runs PIM and creates a shared group databas
- D. Both VSX peers can forward multicast streams to receivers in a VLAN, achieving load sharing
- E. Each VSX peers runs PIM and builds its own group databas
- F. Both VSX peers can forward multicast streams to receivers in a VLAN, achieving load sharing
- G. Each VSX peers runs PIM and creates a shared group databas
- H. One of the VSX peers is elected as the designated router (DR) to forward multicast streams to a receiver VLAN

Answer: A

NEW QUESTION 106

A network engineer is using NetEdit to manage AOS-CX switches. The engineer notices that a lot of thirdparty VoIP phones are showing up in the NetEdit topology. The engineer deletes these, but they are automatically rediscovered by NetEdit and added back in. What should the administrator do to solve this problem?

- A. Change the VoIP phone SNMP community string to something unknown by NetEdit
- B. Disable LLDP globally on the AOS-CX switches where phones are connected
- C. Disable SSH access on all the VoIP phones

D. Disable the RESTful API on all the VoIP phones

Answer: A

NEW QUESTION 111

Which protocol does NetEdit use to discover devices in a subnet during the discovery process?

- A. LLDP
- B. ARP
- C. DHCP
- D. ICMP

Answer: D

NEW QUESTION 115

Examine the AOS-CS switch output:

```
Switch# show aaa authentication port-access interface 1/1/1 client-status
```

Port Access Client Status Details

```
Client 00:50:56:b1:7a:37, icx-employee
```

Session Details

```
Port      : 1/1/3
Session Time : 31273s
```

Authentication Details

```
Status      : dot1x Authenticated
Auth Precedence : dot1x - Authenticated, mac-auth - Not attempted
```

Authorization Details

```
Role       : aruba_contractor-3044-7
Status     : Applied
```

Based on this output, what is correct?

- A. 802.1X authentication was successful, but MAC authentication is yet to start
- B. 802.1X authentication occurred and downloadable user roles are deployed
- C. A local user role was deployed using a ClearPass solution
- D. Only 802.1X authentication is configured on the port

Answer: B

NEW QUESTION 120

.....

THANKS FOR TRYING THE DEMO OF OUR PRODUCT

Visit Our Site to Purchase the Full Set of Actual HPE6-A73 Exam Questions With Answers.

We Also Provide Practice Exam Software That Simulates Real Exam Environment And Has Many Self-Assessment Features. Order the HPE6-A73 Product From:

<https://www.2passeasy.com/dumps/HPE6-A73/>

Money Back Guarantee

HPE6-A73 Practice Exam Features:

- * HPE6-A73 Questions and Answers Updated Frequently
- * HPE6-A73 Practice Questions Verified by Expert Senior Certified Staff
- * HPE6-A73 Most Realistic Questions that Guarantee you a Pass on Your FirstTry
- * HPE6-A73 Practice Test Questions in Multiple Choice Formats and Updatesfor 1 Year