

Exam Questions 350-401

Implementing and Operating Cisco Enterprise Network Core Technologies

<https://www.2passeasy.com/dumps/350-401/>



NEW QUESTION 1

A network administrator is implementing a routing configuration change and enables routing debugs to track routing behavior during the change. The logging output on the terminal is interrupting the command typing process. Which two actions can the network administrator take to minimize the possibility of typing commands incorrectly? (Choose two.)

- A. Configure the logging synchronous global configuration command
- B. Configure the logging delimiter feature
- C. Configure the logging synchronous command under the vty
- D. Press the TAB key to reprint the command in a new line
- E. increase the number of lines on the screen using the terminal length command

Answer: CD

NEW QUESTION 2

Which function is handled by vManage in the Cisco SD-WAN fabric?

- A. Establishes BFD sessions to test liveliness of links and nodes.
- B. Distributes policies that govern data forwarding.
- C. Performs remote software upgrades for WAN Edge vSmart and vBond.
- D. Establishes IPsec tunnels with nodes

Answer: C

NEW QUESTION 3

A customer requests a network design that supports these requirements:

- FHRP redundancy
- multivendor router environment
- IPv4 and IPv6 hosts

Which protocol does the design include?

- A. HSRP version 2
- B. VRRP version 2
- C. GLBP
- D. VRRP version 3

Answer: D

NEW QUESTION 4

A network engineer is configuring Flexible Netflow and enters these commands:
Sampler Netflow1
Mode random one-out-of 100
Interface fastethernet 1/0
Flow-sampler netflow1
Which are two results of implementing this feature instead of traditional Netflow? (Choose two.)

- A. CPU and memory utilization are reduced.
- B. Only the flows of top 100 talkers are exported
- C. The data export flow is more secure.
- D. The number of packets to be analyzed are reduced
- E. The accuracy of the data to be analyzed is improved

Answer: AD

NEW QUESTION 5

Which devices does Cisco DNA Center configure when deploying an IP-based access control policy?

- A. All devices integrating with ISE
- B. selected individual devices
- C. all devices in selected sites
- D. all wired devices

Answer: A

Explanation:

When you click Deploy, Cisco DNA Center requests the Cisco Identity Services Engine (Cisco ISE) to send notifications about the policy changes to the network devices.

NEW QUESTION 6

While configuring an IOS router for HSRP with a virtual IP of 10.1.1.1, an engineer sees this log message.

- A. Change the HSRP group configuration on the remote router to 1.
- B. Change the HSRP group configuration on the local router to 1.
- C. Change the HSRP virtual address on the remote router to 10.1.1.1

D. Change the HSRP virtual address on the local router to 10.1.1.1

Answer: B

NEW QUESTION 7

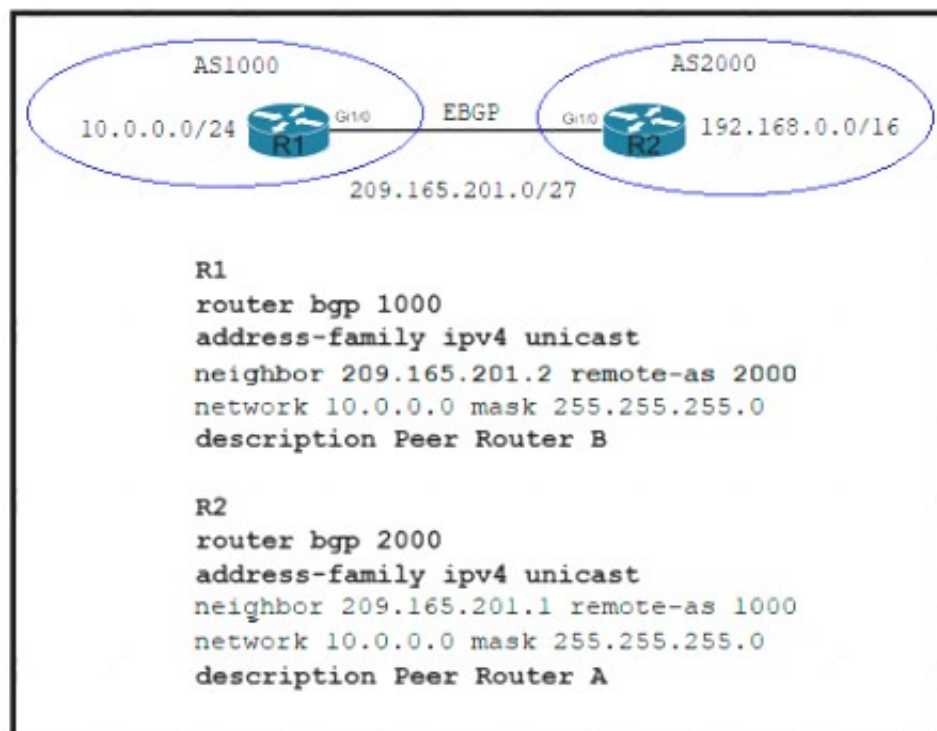
How does EIGRP differ from OSPF?

- A. EIGRP is more prone to routing loops than OSPF
- B. EIGRP supports equal or unequal path cost, and OSPF supports only equal path cost.
- C. EIGRP has a full map of the topology, and OSPF only knows directly connected neighbors
- D. EIGRP uses more CPU and memory than OSPF

Answer: B

NEW QUESTION 8

Refer to the exhibit.



Which two commands are needed to allow for full reachability between AS 1000 and AS 2000? (Choose two)

- A. R1#network 19.168.0.0 mask 255.255.0.0
- B. R2#no network 10.0.0.0 255.255.255.0
- C. R2#network 19.168.0.0 mask 255.255.0.0
- D. R2#network 209.165.201.0 mask 255.255.192.0
- E. R1#no network 10.0.0.0 255.255.255.0

Answer: BC

NEW QUESTION 9

Which algorithms are used to secure REST API from brute attacks and minimize the impact?

- A. SHA-512 and SHA-384
- B. MD5 algorithm-128 and SHA-384
- C. SHA-1, SHA-256, and SHA-512
- D. PBKDF2, BCrypt, and SCrypt

Answer: D

Explanation:

One of the best practices to secure REST APIs is using password hash. Passwords must always be hashed to protect the system (or minimize the damage) even if it is compromised in some hacking attempts. There are many such hashing algorithms which can prove really effective for password security e.g. PBKDF2, bcrypt and scrypt algorithms.

Other ways to secure REST APIs are: Always use HTTPS, Never expose information on URLs (Usernames, passwords, session tokens, and API keys should not appear in the URL),

Adding Timestamp in Request, Using OAuth, Input Parameter Validation.

NEW QUESTION 10

An engineer must configure the strongest password authentication to locally authenticate on a router. Which configuration must be used?

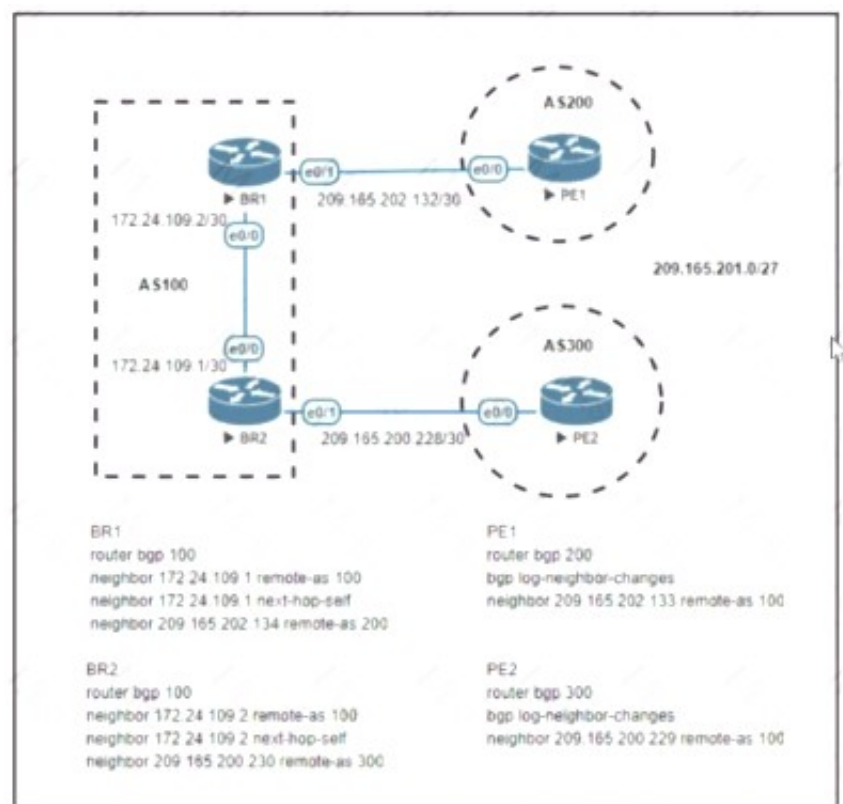
- ☐ username netadmin secret 5 \$1\$b1Ju\$kZbBS1Pyh4QzwXyZ1kSZ2
- ☐ username netadmin secret \$1\$b1Ju\$k404850110QzwXyZ1kSZ2
- ☒ line Console 0
password \$1\$b1Ju\$
- ☐ username netadmin secret 9 \$9\$VfPmF8eib4RVV8\$seZ/bDAX1uV

- A. Option A
- B. Option B
- C. Option C
- D. Option D

Answer: A

NEW QUESTION 10

Refer to the exhibit.



Which configuration change will force BR2 to reach 209 165 201 0/27 via BR1?

- A. Set the weight attribute to 65.535 on BR1 toward PE1.
- B. Set the local preference to 150 on PE1 toward BR1 outbound
- C. Set the MED to 1 on PE2 toward BR2 outbound.
- D. Set the origin to igp on BR2 toward PE2 inbound.

Answer: C

NEW QUESTION 12

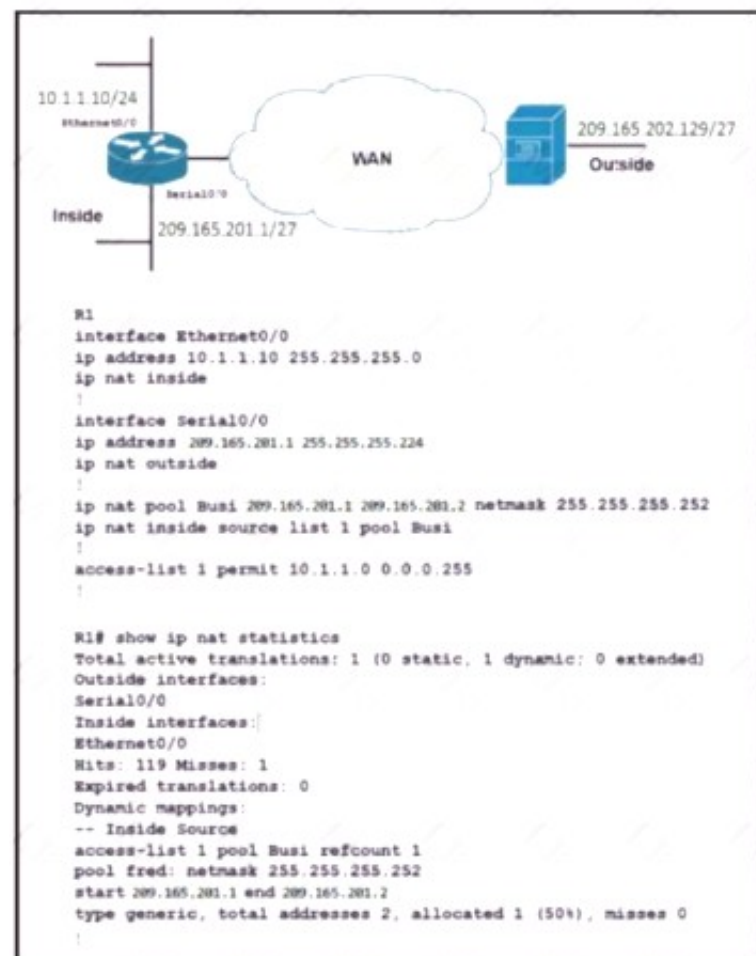
Which encryption hashing algorithm does NTP use for authentication?

- A. SSL
- B. MD5
- C. AES128
- D. AES256

Answer: D

NEW QUESTION 14

Refer to the exhibit.



A network engineer configures NAT on R1 and enters the show command to verify the configuration. What does the output confirm?

- A. The first packet triggered NAT to add an entry to NAT table
- B. R1 is configured with NAT overload parameters
- C. A Telnet from 160.1.1.1 to 10.1.1.10 has been initiated.
- D. R1 is configured with PAT overload parameters

Answer: A

NEW QUESTION 17

Drag and drop the threat defense solutions from the left onto their descriptions on the right.

Umbrella	provides malware protection on endpoints
AMP4E	provides IPS/IDS capabilities
FTD	performs security analytics by collecting network flows
StealthWatch	protects against email threat vector
ESA	provides DNS protection

- A. Mastered
- B. Not Mastered

Answer: A

Explanation:

Umbrella	AMP4E
AMP4E	FTD
FTD	StealthWatch
StealthWatch	ESA
ESA	Umbrella

NEW QUESTION 21

Which technology provides a secure communication channel for all traffic at Layer 2 of the OSI model?

- A. MACsec
- B. IPsec
- C. SSL
- D. Cisco Trustsec

Answer: A

Explanation:

MACsec, defined in 802.1AE, provides MAC-layer encryption over wired networks by using out-of-band methods for encryption keying. The MACsec Key Agreement (MKA) Protocol provides the

NEW QUESTION 22

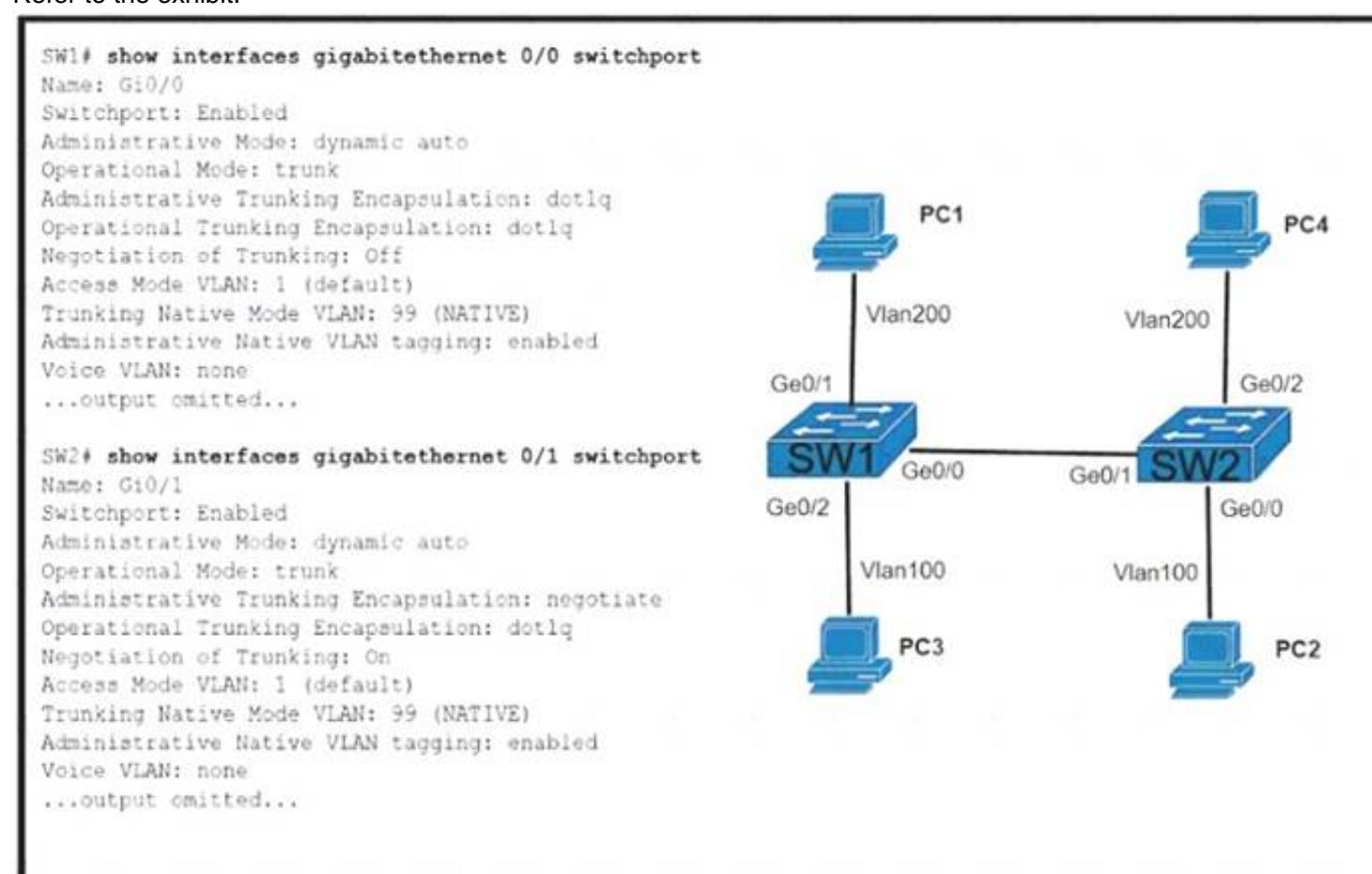
What occurs when a high bandwidth multicast stream is sent over an MVPN using Cisco hardware?

- A. The traffic uses the default MDT to transmit the data only if it is a (S,G) multicast route entry
- B. A data MDT is created to if it is a (*, G) multicast route entries
- C. A data and default MDT are created to flood the multicast stream out of all PIM-SM neighbors.
- D. A data MDT is created to allow for the best transmission through the core for (S, G) multicast route entries.

Answer: B

NEW QUESTION 26

Refer to the exhibit.



The connecting between SW1 and SW2 is not operational. Which two actions resolve the issue? (Choose two)

- A. configure switchport mode access on SW2
- B. configure switchport nonegotiate on SW2
- C. configure switchport mode trunk on SW2
- D. configure switchport nonegotiate on SW1
- E. configure switchport mode dynamic desirable on SW2

Answer: CE

NEW QUESTION 29

Which command set configures RSPAN to capture outgoing traffic from VLAN 3 on interface GigabitEthernet 0/3 while ignoring other VLAN traffic on the same interface?

- ☐ monitor session 2 source interface gigabitEthernet0/3 tx
monitor session 2 filter vlan 3
- ☐ monitor session 2 source interface gigabitEthernet0/3 tx
monitor session 2 filter vlan 1 - 2 , 4 - 4094
- ☐ monitor session 2 source interface gigabitEthernet0/3 rx
monitor session 2 filter vlan 3
- ☒ monitor session 2 source interface gigabitEthernet0/3 rx
monitor session 2 filter vlan 1 - 2 , 4 - 4094

- A. Option A
- B. Option B
- C. Option C
- D. Option D

Answer: D

NEW QUESTION 34

Which AP mode allows an engineer to scan configured channels for rogue access points?

- A. sniffer
- B. monitor
- C. bridge
- D. local

Answer: B

NEW QUESTION 35

A company plans to implement intent-based networking in its campus infrastructure. Which design facilitates a migrate from a traditional campus design to a programmer fabric designer?

- A. Layer 2 access
- B. three-tier
- C. two-tier
- D. routed access

Answer: C

NEW QUESTION 40

Which two methods are used to reduce the AP coverage area? (Choose two)

- A. Reduce channel width from 40 MHz to 20 MHz
- B. Disable 2.4 GHz and use only 5 GHz.
- C. Reduce AP transmit power.
- D. Increase minimum mandatory data rate
- E. Enable Fastlane

Answer: CD

NEW QUESTION 44

Refer to the exhibit.

```
R2#show standby
FastEthernet1/0 - Group 50
  State is Active
    2 state changes, last state change 00:04:02
  Virtual IP address is 10.10.1.1
  Active virtual MAC address is 0000.0c07.ac32 (MAC In Use)
  Local virtual MAC address is 0000.0c07.ac32 (v1 default)
  Hello time 3 sec, hold time 10 sec
  Next hello sent in 1.504 secs
  Preemption enabled, delay reload 90 secs
  Active router is local
  Standby router is unknown
  Priority 200 (configured 200)
  Track interface FastEthernet0/0 state Up decrement 20
  Group name is "harp-Fal/0-50" (default)
R2#
%IP-4-DUPADDR: Duplicate address 10.10.1.1 on FastEthernet1/0, sourced by 0000.0c07.ac28
R2#
```

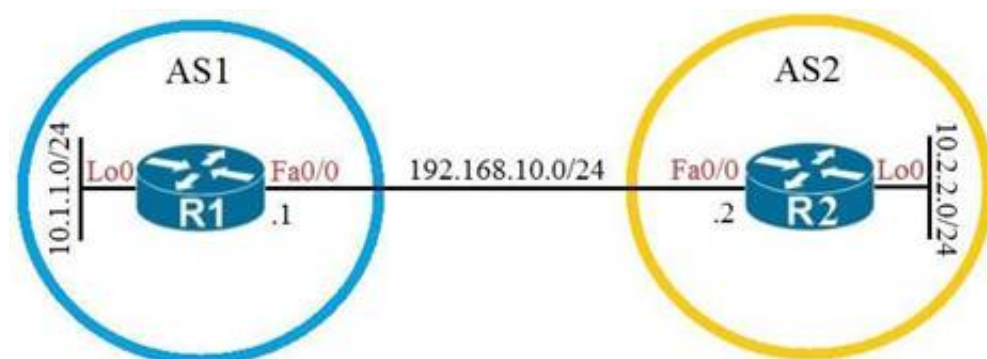
An engineer configures a new HSRP group. While reviewing the HSRP status, the engineer sees the logging message generated on R2. Which is the cause of the message?

- A. The same virtual IP address has been configured for two HSRP groups
- B. The HSRP configuration has caused a spanning-tree loop
- C. The HSRP configuration has caused a routing loop
- D. A PC is on the network using the IP address 10.10.1.1

Answer: A

NEW QUESTION 47

Refer to the exhibit.



Which configuration establishes EBGp neighborhood between these two directly connected neighbors and exchanges the loopback network of the two routers through BGP?

A)
 R1(config)#router bgp 1
 R1(config-router)#neighbor 192.168.10.2 remote-as 2
 R1(config-router)#network 10.1.1.0 mask 255.255.255.0

R2(config)#router bgp 2
 R2(config-router)#neighbor 192.168.10.1 remote-as 1
 R2(config-router)#network 10.2.2.0 mask 255.255.255.0

B)
 R1(config)#router bgp 1
 R1(config-router)#neighbor 10.2.2.2 remote-as 2
 R1(config-router)#network 10.1.1.0 mask 255.255.255.0
 R2(config)#router bgp 2
 R2(config-router)#neighbor 10.1.1.1 remote-as 1
 R2(config-router)#network 10.2.2.0 mask 255.255.255.0

C)
 R1(config)#router bgp 1
 R1(config-router)#neighbor 192.168.10.2 remote-as 2
 R1(config-router)#network 10.0.0.0 mask 255.0.0.0
 R2(config)#router bgp 2
 R2(config-router)#neighbor 192.168.10.1 remote-as 1
 R2(config-router)#network 10.0.0.0 mask 255.0.0.0

D)
 R1(config)#router bgp 1
 R1(config-router)#neighbor 10.2.2.2 remote-as 2
 R1(config-router)#neighbor 10.2.2.2 update-source lo0
 R1(config-router)#network 10.1.1.0 mask 255.255.255.0
 R2(config)#router bgp 2
 R2(config-router)#neighbor 10.1.1.1 remote-as 1
 R2(config-router)#neighbor 10.1.1.1 update-source lo0
 R2(config-router)#network 10.2.2.0 mask 255.255.255.0

- A. Option A
- B. Option B
- C. Option C
- D. Option D

Answer: A

Explanation:

With BGP, we must advertise the correct network and subnet mask in the “network” command (in this case network 10.1.1.0/24 on R1 and network 10.2.2.0/24 on R2). BGP is very strict in the routing advertisements. In other words, BGP only advertises the network which exists exactly in the routing table. In this case, if you put the command “network x.x.0.0 mask 255.255.0.0” or “network x.0.0.0 mask 255.0.0.0” or “network x.x.x.x mask 255.255.255.255” then BGP will not advertise anything.

It is easy to establish eBGP neighborhood via the direct link. But let’s see what are required when we want to establish eBGP neighborhood via their loopback interfaces. We will need two commands:

+ the command “neighbor 10.1.1.1 ebgp-multihop 2” on R1 and “neighbor 10.2.2.2 ebgp-multihop 2” on R1. This command increases the TTL value to 2 so that BGP updates can reach the

BGP neighbor which is two hops away.

+ Answer ‘R1 (config) #router bgp 1

R1 (config-router) #neighbor 192.168.10.2 remote-as 2

R1 (config-router) #network 10.1.1.0 mask 255.255.255.0 R2 (config) #router bgp 2

R2 (config-router) #neighbor 192.168.10.1 remote-as 1

R2 (config-router) #network 10.2.2.0 mask 255.255.255.0 Quick Wireless Summary

Cisco Access Points (APs) can operate in one of two modes: autonomous or lightweight

+ Autonomous: self-sufficient and standalone. Used for small wireless networks.

+ Lightweight: A Cisco lightweight AP (LAP) has to join a Wireless LAN Controller (WLC) to function. LAP and WLC communicate with each other via a logical pair of CAPWAP tunnels.

– Control and Provisioning for Wireless Access Point (CAPWAP) is an IETF standard for control messaging for setup, authentication and operations between APs and WLCs. CAPWAP is similar to LWAPP except the following differences:

- +CAPWAP uses Datagram Transport Layer Security (DTLS) for authentication and encryption to protect traffic between APs and controllers. LWAPP uses AES.
- + CAPWAP has a dynamic maximum transmission unit (MTU) discovery mechanism.
- + CAPWAP runs on UDP ports 5246 (control messages) and 5247 (data messages) An LAP operates in one of six different modes:
- + Local mode (default mode): measures noise floor and interference, and scans for intrusion detection (IDS) events every 180 seconds on unused channels
- + FlexConnect, formerly known as Hybrid Remote Edge AP (H-REAP), mode: allows data traffic to be switched locally and not go back to the controller. The FlexConnect AP can perform standalone client authentication and switch VLAN traffic locally even when it's disconnected to the WLC (Local Switched). FlexConnect AP can also tunnel (via CAPWAP) both user wireless data and control traffic to a centralized WLC (Central Switched).
- + Monitor mode: does not handle data traffic between clients and the infrastructure. It acts like a sensor for location-based services (LBS), rogue AP detection, and IDS
- + Rogue detector mode: monitor for rogue APs. It does not handle data at all.
- + Sniffer mode: run as a sniffer and captures and forwards all the packets on a particular channel to a remote machine where you can use protocol analysis tool (Wireshark, Airopeek, etc) to review the packets and diagnose issues. Strictly used for troubleshooting purposes.
- + Bridge mode: bridge together the WLAN and the wired infrastructure together.

Mobility Express is the ability to use an access point (AP) as a controller instead of a real WLAN controller. But this solution is only suitable for small to midsize, or multi-site branch locations where you might not want to invest in a dedicated WLC. A Mobility Express WLC can support up to 100 Aps

NEW QUESTION 48

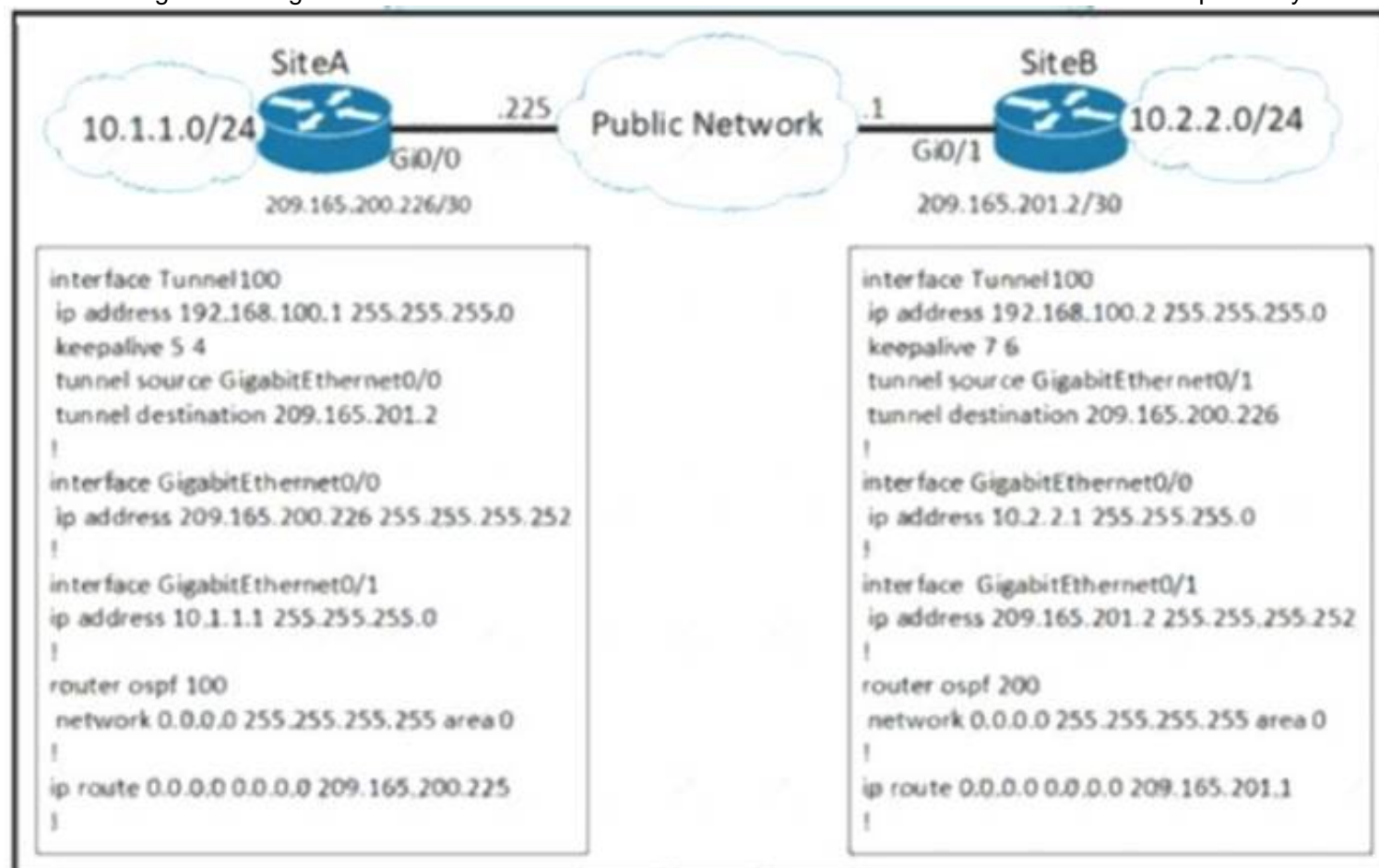
What is the function of the LISP map resolver?

- A. to send traffic to non-LISP sites when connected to a service provider that does not accept nonroutable EIDs as packet sources
- B. to connect a site to the LISP-capable part of a core network publish the EID-to-RLOC mappings for the site, and respond to map-request messages
- C. to decapsulate map-request messages from ITRs and forward the messages to the MS.
- D. to advertise routable non-LISP traffic from one address family to LISP sites in a different address family

Answer: C

NEW QUESTION 51

A network engineer configures a new GRE tunnel and enters the show run command. What does the output verify?



- A. The tunnel will be established and work as expected
- B. The tunnel destination will be known via the tunnel interface
- C. The tunnel keepalive is configured incorrectly because they must match on both sites
- D. The default MTU of the tunnel interface is 1500 byte.

Answer: B

NEW QUESTION 56

Which benefit is offered by a cloud infrastructure deployment but is lacking in an on-premises deployment?

- A. efficient scalability
- B. virtualization
- C. storage capacity
- D. supported systems

Answer: A

NEW QUESTION 58

What is YANG used for?

- A. scraping data via CLI
- B. processing SNMP read-only polls
- C. describing data models
- D. providing a transport for network configuration data between client and server

Answer: C

NEW QUESTION 63

Refer to the exhibit.

```
interface Vlan10
ip vrf forwarding Customer1
ip address 192.168.1.1 255.255.255.0
!
interface Vlan20
ip vrf forwarding Customer2
ip address 172.16.1.1 255.255.255.0
!
interface Vlan30
ip vrf forwarding Customer3
ip address 10.1.1.1 255.255.255.0
```

Which configuration allows Customer2 hosts to access the FTP server of Customer1 that has the IP address of 192.168.1.200?

- A. ip route vrf Customer1 172.16.1.0 255.255.255.0 172.16.1.1 globalip route vrf Customer 192.168.1.200 255.255.255.255 192.168.1.1 globalip route 192.168.1.0 255.255.255.0 Vlan10ip route 172.16.1.0 255.255.255.0 Vlan20
- B. ip route vrf Customer1 172.16.1.0 255.255.255.0 172.16.1.1 Customer2ip route vrf Customer 192.168.1.200 255.255.255.255 192.168.1.1 Customer1
- C. ip route vrf Customer1 172.16.1.0 255.255.255.0 172.16.1.1 Customer1ip route vrf Customer 192.168.1.200 255.255.255.255 192.168.1.1 Customer2
- D. ip route vrf Customer1 172.16.1.1 255.255.255.255 172.16.1.1 globalip route vrf Customer 192.168.1.200 255.255.255.0 192.168.1.1 globalip route 192.168.1.0 255.255.255.0 Vlan10ip route 172.16.1.0 255.255.255.0 Vlan20

Answer: A

NEW QUESTION 66

AN engineer is implementing a route map to support redistribution within BGP. The route map must be configured to permit all unmatched routes. Which action must the engineer perform to complete this task?

- A. Include a permit statement as the first entry
- B. Include at least one explicit deny statement
- C. Remove the implicit deny entry
- D. Include a permit statement as the last entry

Answer: D

NEW QUESTION 71

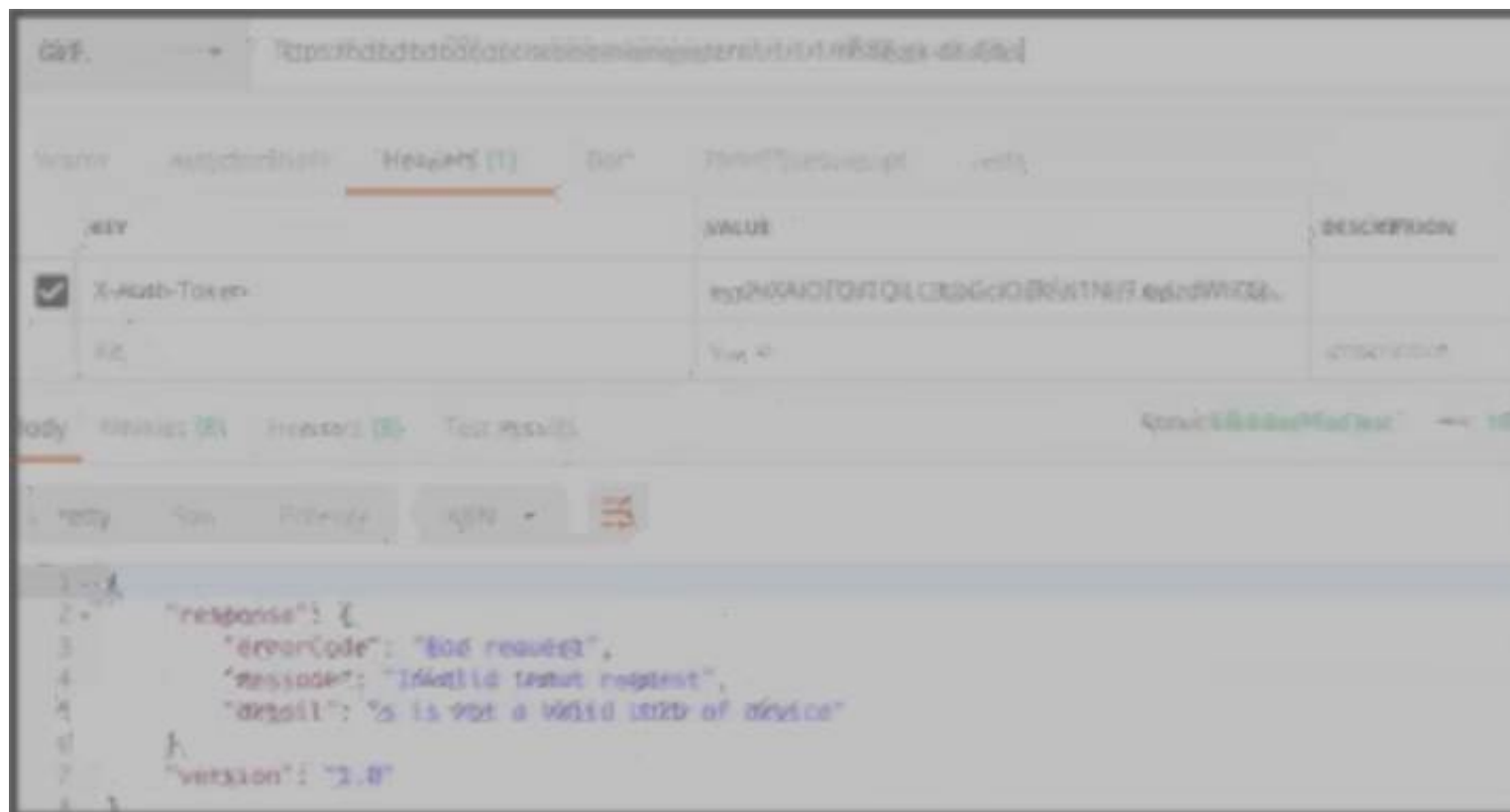
AN engineer is implementing MPLS OAM to monitor traffic within the MPLS domain. Which action must the engineer perform to prevent from being forwarded beyond the service provider domain when the LSP is down?

- A. Disable IP redirects only on outbound interfaces
- B. Implement the destination address for the LSP echo request packet in the 127.x.y.z/8 network
- C. Disable IP redirects on all ingress interfaces
- D. Configure a private IP address as the destination address of the headend router of Cisco MPLS TE.

Answer: C

NEW QUESTION 72

Refer to the exhibit.



POSTMAN is showing an attempt to retrieve network device information from Cisco DNA Center API. What is the issue?

- A. The URI string is incorrect
- B. The token has expired.
- C. Authentication has failed
- D. The JSON payload contains the incorrect UUID

Answer: D

NEW QUESTION 76

Under which network conditions is an outbound QoS policy that is applied on a router WAN interface most beneficial?

- A. under interface saturation condition
- B. under network convergence condition
- C. under all network condition
- D. under traffic classification and marking conditions.

Answer: A

NEW QUESTION 81

A network engineer is adding an additional 10Gbps link to an exiting 2x10Gbps LACP-based LAG to augment its capacity. Network standards require a bundle interface to be taken out of service if one of its member links goes down, and the new link must be added with minimal impact to the production network. Drag and drop the tasks that the engineer must perform from the left into the sequence on the right. Not all options are used.

Execute the channel-group number mode active command to add the 10Gbps link to the existing bundle.	step 1
Execute the channel-group number mode on command to add the 10Gbps link to the existing bundle.	step 2
Execute the lacp min-bundle 3 command to set the minimum number of ports threshold.	step 3
Validate the network layer of the 10Gbps link.	step 4
Execute the channel-group number mode auto command to add the 10Gbps link to the existing bundle.	
Validate the physical and data link layers of the 10Gbps link.	

- A. Mastered
- B. Not Mastered

Answer: A

Explanation:

A picture containing diagram Description automatically generated

NEW QUESTION 84

What is a consideration when designing a Cisco SD-Access underlay network?

- A. End user subnets and endpoints are part of the underlay network.
- B. The underlay switches provide endpoint physical connectivity for users.
- C. Static routing is a requirement,
- D. It must support IPv4 and IPv6 underlay networks

Answer: A

NEW QUESTION 89

What are two considerations when using SSO as a network redundancy feature? (Choose two)

- A. both supervisors must be configured separately
- B. the multicast state is preserved during switchover
- C. must be combined with NSF to support uninterrupted Layer 2 operations
- D. must be combined with NSF to support uninterrupted Layer 3 operations
- E. requires synchronization between supervisors in order to guarantee continuous connectivity

Answer: DE

Explanation:

Text Description automatically generated

against failure due to the Supervisor or loss of service because of software problems. The access layer typically provides Layer 2 services, with redundant switches making up the distribution layer. The Layer 2 access layer can benefit from SSO deployed without NSF. Some Enterprises have deployed Layer 3 routing at the access layer. In that case, NSF/SSO can be used.

Cisco IOS Nonstop Forwarding(NSF) always runs with stateful switchover (SSO) and provides redundancy for Layer 3 traffic.

NEW QUESTION 92

If the noise floor is -90 dBm and wireless client is receiving a signal of -75 dBm, what is the SNR?

- A. 15
- B. 1.2
- C. -165
- D. .83

Answer: A

NEW QUESTION 94

Drag and drop the DHCP messages that are exchanged between a client and an AP into the order they are exchanged on the right.

DHCP request	Step 1
DHCP offer	Step 2
DHCP discover	Step 3
DHCP ack	Step 4

- A. Mastered
- B. Not Mastered

Answer: A

Explanation:

Table Description automatically generated

There are four messages sent between the DHCP Client and DHCP Server: DHCPDISCOVER, DHCPOFFER, DHCPREQUEST and DHCPACKNOWLEDGEMENT.

This process is often abbreviated as DORA (for Discover, Offer, Request, Acknowledgement).

NEW QUESTION 97

What is a characteristic of a next-generation firewall?

- A. only required at the network perimeter
- B. required in each layer of the network
- C. filters traffic using Layer 3 and Layer 4 information only
- D. provides intrusion prevention

Answer: D

Which LISP component is required for a LISP site to communicate with a non-LISP site?

- A. ETR
- B. ITR
- C. Proxy ETR
- D. Proxy ITR

Answer: C

NEW QUESTION 109

What is a characteristic of MACsec?

- A. 802.1AE provides encryption and authentication services
- B. 802.1AE is built between the host and switch using the MKA protocol, which negotiates encryption keys based on the master session key from a successful 802.1X session
- C. 802.1AE is built between the host and switch using the MKA protocol using keys generated via the Diffie-Hellman algorithm (anonymous encryption mode)
- D. 802.1AE is negotiated using Cisco AnyConnect NAM and the SAP protocol

Answer: A

Explanation:

MACsec, defined in 802.1AE, provides MAC-layer encryption over wired networks by using out-of-band methods for encryption keying. The MACsec Key Agreement (MKA) Protocol provides the required session keys and manages the required encryption keys. MKA and MACsec are implemented after successful authentication using the 802.1x Extensible Authentication Protocol (EAP-TLS) or Pre Shared Key (PSK) framework.

NEW QUESTION 114

Which three elements determine Air Time efficiency? (Choose three)

- A. event-driven RRM
- B. data rate (modulation density) or QAM
- C. channel bandwidth
- D. number of spatial streams and spatial reuse
- E. RF group leader
- F. dynamic channel assignment

Answer: ACE

NEW QUESTION 119

Running the script causes the output in the exhibit. Which change to the first line of the script resolves the error?

```
import ncclient
```

```
with ncclient.manager.connect(
    host = '192.168.1.1',
    port=830,
    username = 'root',
    password = 'test398345152!',
    allow_agent = False) as m:
    print(m.get_config('running').data_xml)
```

Output

```
$ python get_config.py
Traceback (most recent call last) :
  File "get_config.py", line 3, in <module>
    with ncclient.manager.connect (host = '192.168.1.1, port = 830, username = 'root',
AttributeError: 'module' object has no attribute 'manager'
```

- A. from ncclient import
- B. import manager
- C. from ncclient import*
- D. import ncclient manager

Answer: A

NEW QUESTION 120

In cisco SD_WAN, which protocol is used to measure link quality?

- A. OMP
- B. BFD
- C. RSVP
- D. IPsec

Answer: B

NEW QUESTION 122

What is the function of cisco DNA center in a cisco SD-access deployment?

- A. It is responsible for routing decisions inside the fabric
- B. It is responsible for the design, management, deployment, provisioning and assurance of the fabric network devices.
- C. It possesses information about all endpoints, nodes and external networks related to the fabric
- D. It provides integration and automation for all nonfabric nodes and their fabric counterparts.

Answer: B

NEW QUESTION 126

Drag and drop the virtual components from the left onto their deceptions on the right.

VNIC	zip file connecting a virtual machine configuration file and a virtual disk
OVA	file containing a virtual machine disk drive
VMDK	configuration file containing settings for a virtual machine such as guest OS
VMX	component of a virtual machine responsible for sending packets to the hypervisor

- A. Mastered
- B. Not Mastered

Answer: A

Explanation:

VNIC	zip file connecting a virtual machine configuration file and a virtual disk
OVA	file containing a virtual machine disk drive
VMDK	configuration file containing settings for a virtual machine such as guest OS
VMX	component of a virtual machine responsible for sending packets to the hypervisor

NEW QUESTION 131

Drag and drop the characteristics from the left onto the routing protocols they describe on the right.

supports unequal path load balancing	OSPF
link state routing protocol	
distance vector routing protocol	
metric is based on delay and bandwidth by default	EIGRP
makes it easy to segment the network logically	
constructs three tables as part of its operation: neighbor table, topology table, and routing table	

- A. Mastered
- B. Not Mastered

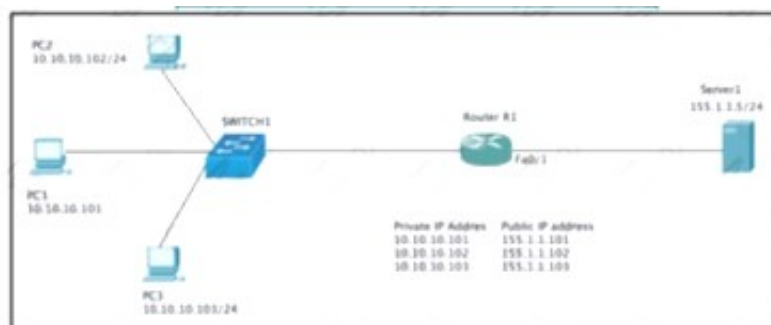
Answer: A

Explanation:

Diagram Description automatically generated

NEW QUESTION 133

Refer to the exhibit.



Which set of commands on router r R1 Allow deterministic translation of private hosts PC1, PC2, and PC3 to addresses in the public space?

A)

```
RouterR1(config)#int f0/0
RouterR1(config-if)#ip nat inside
RouterR1(config-if)#exit
RouterR1(config)#int f0/1
RouterR1(config-if)#ip nat outside
RouterR1(config-if)#exit
RouterR1(config)#ip nat inside source static 10.10.10.101 155.1.1.101
RouterR1(config)#ip nat inside source static 10.10.10.102 155.1.1.102
RouterR1(config)#ip nat inside source static 10.10.10.103 155.1.1.103
```

B)

```
RouterR1(config)#int f0/0
RouterR1(config-if)#ip nat inside
RouterR1(config-if)#exit
RouterR1(config)#int f0/1
RouterR1(config-if)#ip nat outside
RouterR1(config-if)#exit
RouterR1(config)#ip nat inside source static 10.10.10.101 155.1.1.101
RouterR1(config)#ip nat inside source static 10.10.10.102 155.1.1.102
RouterR1(config)#ip nat inside source static 10.10.10.103 155.1.1.103
```

C)

```
RouterR1(config)#int f0/0
RouterR1(config-if)#ip nat inside
RouterR1(config-if)#exit
RouterR1(config)#int f0/1
RouterR1(config-if)#ip nat outside
RouterR1(config-if)#exit
RouterR1(config)#access-list 1 10.10.10.0 0.0.0.255
RouterR1(config)#ip nat pool POOL 155.1.1.101 155.1.1.103 netmask 255.255.255.0
RouterR1(config)#ip nat inside source list 1 pool POOL
```

D)

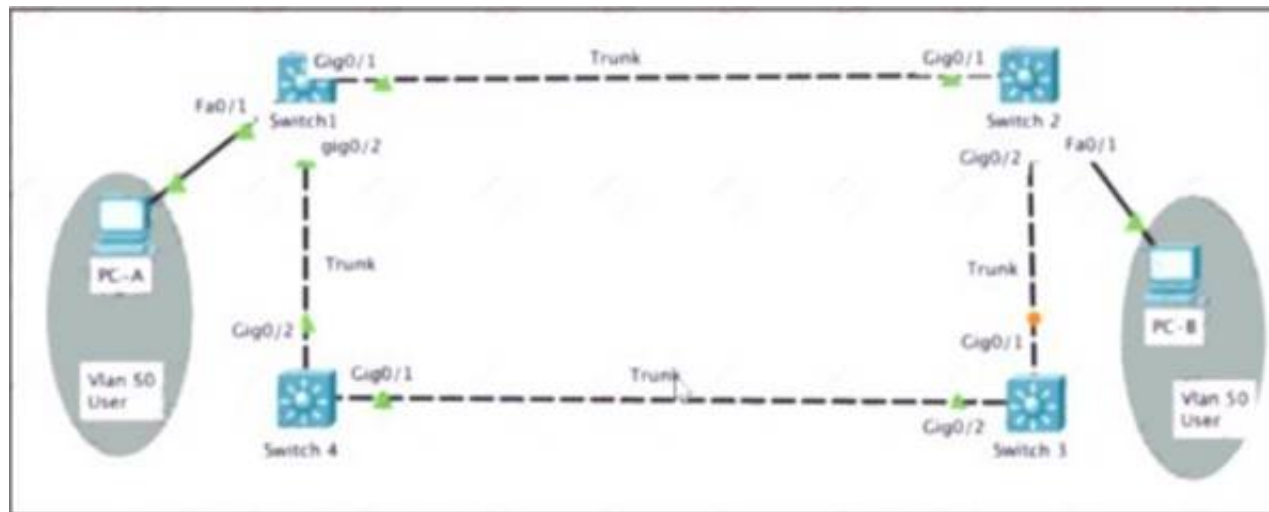
```
RouterR1(config)#int f0/0
RouterR1(config-if)#ip nat inside
RouterR1(config-if)#exit
RouterR1(config)#int f0/1
RouterR1(config-if)#ip nat outside
RouterR1(config-if)#exit
RouterR1(config)#access-list 1 10.10.10.0 0.0.0.255
RouterR1(config)#ip nat inside source list 1 interface f0/1 overload
```

- A. Option A
- B. Option B
- C. Option C
- D. Option D

Answer: A

NEW QUESTION 134

Refer to the exhibit.



Rapid PVST+ is enabled on all switches. Which command set must be configured on switch1 to achieve the following results on port fa0/1?

- When a device is connected, the port transitions immediately to a forwarding state.
- The interface should not send or receive BPDUs.
- If a BPDU is received, it continues operating normally.

A)

```
Switch1(config)# interface f0/1
Switch1(config-if)# spanning-tree portfast
```

B)

```
Switch1(config)# spanning-tree portfast bpduguard default
Switch1(config)# interface f0/1
Switch1(config-if)# spanning-tree portfast
```

C)

```
Switch1(config)# spanning-tree portfast bpduguard default
Switch1(config)# interface f0/1
Switch1(config-if)# spanning-tree portfast
```

D)

```
Switch1(config)# interface f0/1
Switch1(config-if)# spanning-tree portfast
Switch1(config-if)# spanning-tree bpduguard enable
```

- A. Option A
 B. Option B
 C. Option C
 D. Option D

Answer: D

NEW QUESTION 137

What is used to perform OoS packet classification?

- A. the Options field in the Layer 3 header
 B. the Type field in the Layer 2 frame
 C. the Flags field in the Layer 3 header
 D. the TOS field in the Layer 3 header

Answer: D

NEW QUESTION 140

An engineer is implementing a Cisco MPLS TE tunnel to improve the streaming experience for the clients of a video-on-demand server. Which action must the engineer perform to configure extended discovery to support the MPLS LDP session between the headend and tailend routers?

- A. Configure the interface bandwidth to handle TCP and UDP traffic between the LDP peers
 B. Configure a Cisco MPLS TE tunnel on both ends of the session
 C. Configure an access list on the interface to permit TCP and UDP traffic
 D. Configure a targeted neighbor session.

Answer: B

NEW QUESTION 144

How is MSDP used to interconnect multiple PIM-SM domains?

- A. MSDP depends on BGP or multiprotocol BGP for mterdomam operation
 B. MSDP SA request messages are used to request a list of active sources for a specific group
 C. SDP allows a rendezvous point to dynamically discover active sources outside of its domain
 D. MSDP messages are used to advertise active sources in a domain

Answer: A

NEW QUESTION 146

Refer to the exhibit

```
DSW1#sh spanning-tree int fa1/0/7
```

Vlan	Role	Sts	Cost	Prio.	Nbr	Type
VLAN0001	Desg	FWD	2	128.9	P2p	Edge
VLAN0010	Desg	FWD	2	128.9	P2p	Edge
VLAN0020	Desg	FWD	2	128.9	P2p	Edge
VLAN0030	Desg	FWD	2	128.9	P2p	Edge
VLAN0040	Desg	FWD	2	128.9	P2p	Edge

How was spanning-tree configured on this interface?

- A. By entering the command spanning-tree portfast trunk in the interface configuration mode.
- B. By entering the command spanning-tree portfast in the interface configuration mode
- C. By entering the command spanning-tree mst1 vlan 10,20,30,40 in the global configuration mode
- D. By entering the command spanning-tree vlan 10,20,30,40 root primary in the interface configuration mode

Answer: A

NEW QUESTION 147

Which network devices secure API platform?

- A. next-generation intrusion detection systems
- B. Layer 3 transit network devices
- C. content switches
- D. web application firewalls

Answer: A

NEW QUESTION 151

Which line must be added in the Python function to return the JSON object {"cat_9k": "FXS193202SE"}?

```
import json
def get_data():
    test_json = """
    {
        "response": [{
            "managementIpAddress": "10.10.2.253",
            "memorySize": "3398345152",
            "serialNumber": "FXS1932Q2SE",
            "softwareVersion": "16.3.2",
            "hostname": "cat_9k"
        }],
        "version": "1.0"
    }
    """
```

- A)


```
return (json.dumps({d['hostname']: d['serialNumber'] for d in json.loads(test_json)['response']}))
```
- B)


```
return (json.dumps({for d in json.loads(test_json)['response']: d['hostname']: d['serialNumber']}))
```
- C)


```
return (json.loads({d['hostname']: d['serialNumber'] for d in json.dumps(test_json)['response']}))
```
- D)


```
return (json.loads({for d in json.dumps(test_json)['response']: d['hostname']: d['serialNumber']}))
```

- A. Option A
- B. Option B
- C. Option C
- D. Option D

Answer: D

NEW QUESTION 155

Drag and drop the characteristics from the left onto the routing protocols they describe on the right.

supports virtual links	EIGRP
can automatically summarize networks at the boundary	
requires manual configuration of network summarization	OSPF

- A. Mastered
 B. Not Mastered

Answer: A

Explanation:

supports virtual links	EIGRP
can automatically summarize networks at the boundary	
requires manual configuration of network summarization	OSPF

NEW QUESTION 160

What is one difference between saltstack and ansible?

- A. SaltStack uses an API proxy agent to program Cisco boxes on agent mode, whereas Ansible uses a Telnet connection
 B. SaltStack uses the Ansible agent on the box, whereas Ansible uses a Telnet server on the box
 C. SaltStack is constructed with minion, whereas Ansible is constructed with YAML
 D. SaltStack uses SSH to interact with Cisco devices, whereas Ansible uses an event bus

Answer: A

NEW QUESTION 162

Refer to the exhibit.



Router 1 is currently operating as the HSRP primary with a priority of 110 router1 fails and router2 take over the forwarding role. Which command on router1 causes it to take over the forwarding role when it return to service?

- A. standby 2 priority
 B. standby 2 preempt
 C. standby 2 track
 D. standby 2 timers

Answer: B

NEW QUESTION 163

Which JSON syntax is valid?

- A)

["switch": {"name": "dist1", "interfaces": ["gig1", "gig2", "gig3"]}]

- B)
{"switch": {"name": "dist1", "interfaces": ["gig1", "gig2", "gig3"]}}
- C)
{"switch": {"name": "dist1", "interfaces": ["gig1", "gig2", "gig3"]}}
- D)
["switch": {"name": "dist1", "interfaces": ["gig1", "gig2", "gig3"]}]

- A. Option A
B. Option B
C. Option C
D. Option D

Answer: C

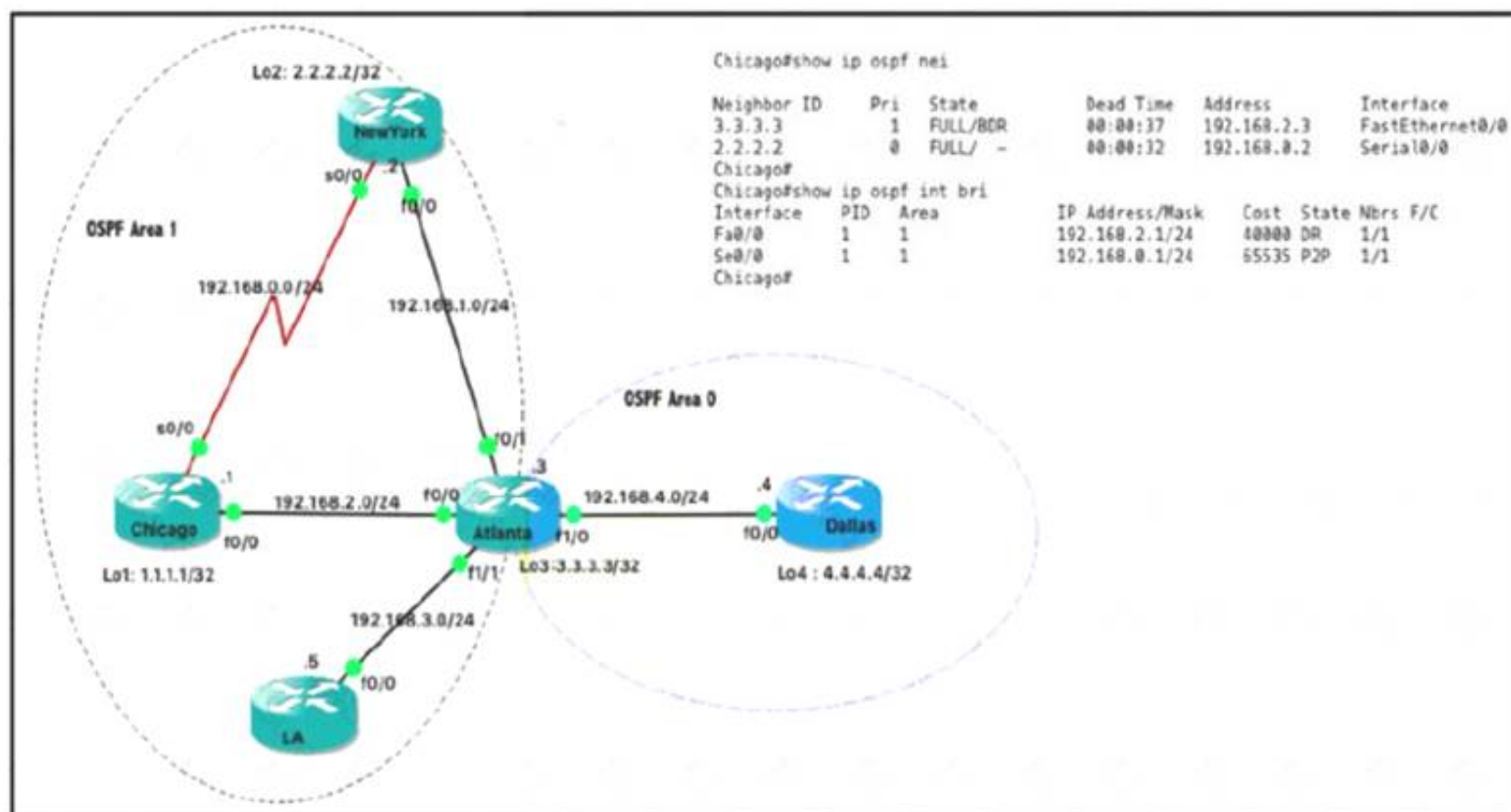
Explanation:

This JSON can be written as follows:

```
{
  'switch': { 'name': 'dist1',
    'interfaces': ['gig1', 'gig2', 'gig3']
  }
}
```

NEW QUESTION 164

Refer the exhibit.



Which router is the designated router on the segment 192.168.0.0/24?

- A. This segment has no designated router because it is a nonbroadcast network type.
B. This segment has no designated router because it is a p2p network type.
C. Router Chicago because it has a lower router ID
D. Router NewYork because it has a higher router ID

Answer: B

NEW QUESTION 169

Refer to the exhibit.



An engineer attempts to configure a trunk between switch sw1 and switch SW2 using DTP, but the trunk does not form. Which command should the engineer apply to switch SW2 to resolve this issue?

- A. switchport mode dynamic desirable
- B. switchport nonegotiate
- C. no switchport
- D. switchport mode access

Answer: A

NEW QUESTION 173

Which device makes the decision for a wireless client to roam?

- A. wireless client
- B. wireless LAN controller
- C. access point
- D. WCS location server

Answer: A

NEW QUESTION 175

An engineer measures the Wi-Fi coverage at a customer site. The RSSI values are recorded as follows:

- Location A: -72 dBm
- Location B: -75 dBm
- Location C: -85 dBm
- Location D: -80 dBm

Which two statements does the engineer use to explain these values to the customer? (Choose two)

- A. The signal strength at location C is too weak to support web surfing
- B. Location D has the strongest RF signal strength
- C. The RF signal strength at location B is 50% weaker than location A
- D. The signal strength at location B is 10 dB better than location C
- E. The RF signal strength at location C is 10 times stronger than location B

Answer: BE

NEW QUESTION 179

Which TCP setting is tuned to minimize the risk of fragmentation on a GRE/IP tunnel?

- A. MTU
- B. Window size
- C. MRU
- D. MSS

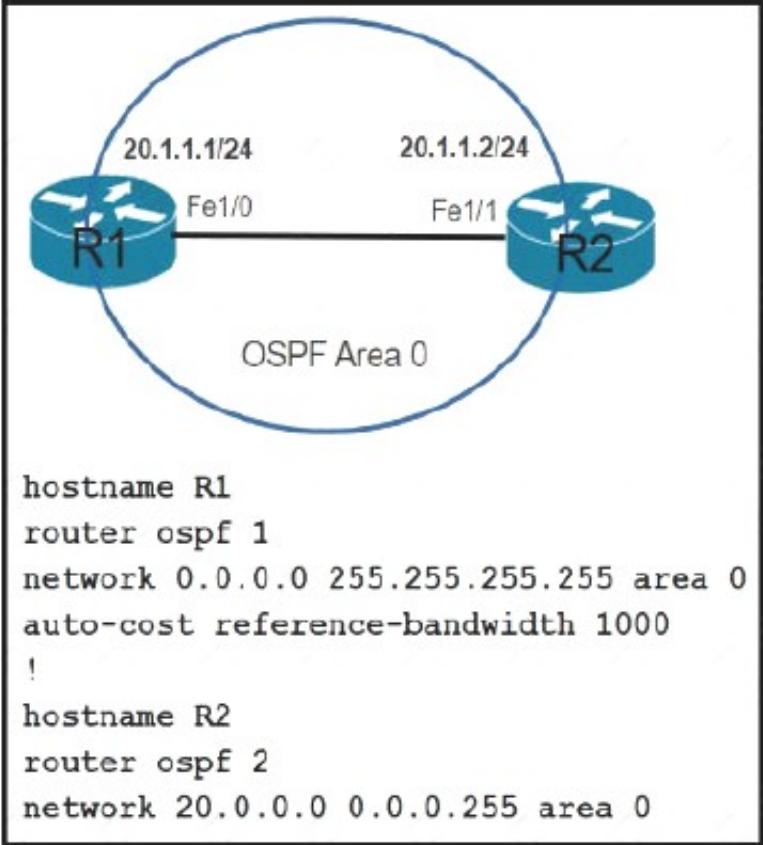
Answer: D

Explanation:

The TCP Maximum Segment Size (TCP MSS) defines the maximum amount of data that a host is willing to accept in a single TCP/IP datagram. This TCP/IP datagram might be fragmented at the IP layer. The MSS value is sent as a TCP header option only in TCP SYN segments. Each side of a TCP connection reports its MSS value to the other side. Contrary to popular belief, the MSS value is not negotiated between hosts. The sending host is required to limit the size of data in a single TCP segment to a value less than or equal to the MSS reported by the receiving host. TCP MSS takes care of fragmentation at the two endpoints of a TCP connection, but it does not handle the case where there is a smaller MTU link in the middle between these two endpoints. PMTUD was developed in order to avoid fragmentation in the path between the endpoints. It is

NEW QUESTION 182

Which command must be applied to R2 for an OSPF neighborship to form?



- A. network 20.1.1.2.0.0.0.0 area 0
- B. network 20.1.1.2 255.255.0.0. area 0
- C. network 20.1.1.2.0.0.255.255 area 0
- D. network 20.1.1.2 255.255.255 area 0

Answer: A

Explanation:

The network 20.0.0.0 0.0.0.255 area 0 command on R2 did not cover the IP address of Fa1/1 interface of R2 so OSPF did not run on this interface. Therefore we have to use the command network 20.1.1.2 0.0.255.255 area 0 to turn on OSPF on this interface.
Note: The command network 20.1.1.2 0.0.255.255 area 0 can be used too so this answer is also correct but answer C is the best answer here.
The network 0.0.0.0 255.255.255.255 area 0 command on R1 will run OSPF on all active

NEW QUESTION 187

An engineer is working with the Cisco DNA Center API Drag and drop the methods from the left onto the actions that they are used for on the right.

GET	remove an element using the API
POST	update an element
DELETE	extract information from the API
PUT	create an element

- A. Mastered
- B. Not Mastered

Answer: A

Explanation:

	DELETE
	PUT
	GET
	POST

NEW QUESTION 190

Refer to the exhibit.

```
Tunnel100 is up, line protocol is up
Hardware is Tunnel
Internet address is 192.168.200.1/24
MTU 17912 bytes, BW 100 Kbit/sec, DLY 50000 usec,
  reliability 255/255, txload 1/255, rxload 1/255
Encapsulation TUNNEL, loopback not set
Keepalive set (10 sec), retries 3
Tunnel source 209.165.202.129 (GigabitEthernet0/1)
Tunnel Subblocks:
  src-track:
    Tunnel100 source tracking subblock associated with GigabitEthernet0/1
    Set of tunnels with source GigabitEthernet0/1, 1 members (includes iterators), on interface <OK>
Tunnel protocol/transport GRE/IP
Key disabled, sequencing disabled
Checksumming of packets disabled
Tunnel TTL 255, Fast tunneling enabled
Tunnel transport MTU 1476 bytes
```

A network engineer configures a GRE tunnel and enters the show Interface tunnel command. What does the output confirm about the configuration?

- A. The keepalive value is modified from the default value.
- B. Interface tracking is configured.
- C. The tunnel mode is set to the default.
- D. The physical interface MTU is 1476 bytes.

Answer: C

NEW QUESTION 194

A network engineer must configure a router to send logging messages to a syslog server based on these requirements:

- > uses syslog IP address: 10.10.10.1
- > uses a reliable protocol
- > must not use any well-known TCP/UDP ports

Which configuration must be used?

- A. logging host 10.10.10.1 transport tcp port 1024
- B. logging origin-id 10.10.10.1
- C. logging host 10.10.10.1 transport udp port 1023
- D. logging host 10.10.10.1 transport udp port 1024

Answer: A

NEW QUESTION 195

Which two mechanisms are available to secure NTP? (Choose two.)

- A. IP prefix list-based
- B. IPsec
- C. TACACS-based authentication
- D. IP access list-based
- E. Encrypted authentication

Answer: DE

NEW QUESTION 196

Refer to the exhibit.

```
RP/0/0/CP00:BRDR-1#show route ipv4 0.0.0.0
Routing entry for 0.0.0.0/0
  Known via "bgp 65001", distance 20, metric 0, candidate default path
  Tag 65002, type external
  Installed Jan  2 08:40:59.889 for 00:01:18
  Routing Descriptor Blocks
    100.65.19.1, from 100.65.19.1, BGP external
    Route metric is 0
  No advertising protos.

RP/0/0/CP00:BRDR-1#show run router ospf
router ospf 1
 redistribute bgp 65001 route-policy BGP-TO-OSPF
 area 0
  mpls traffic-eng
  interface Loopback0
  interface GigabitEthernet0/0/0/0.92
  interface GigabitEthernet0/0/0/0.3132
  mpls traffic-eng router-id Loopback0

RP/0/0/CP00:BRDR-1#show rpl route-policy BGP-TO-OSPF
route-policy BGP-TO-OSPF
 if destination in (0.0.0.0/0) then
  set metric-type type-1
 endif
 set metric-type type-2
 set ospf-metric 100
end-policy
```

Router BRDR-1 is configured to receive the 0.0.0.0/0 and 172.17.1.0/24 network via BGP and advertise them into OSPF are 0. An engineer has noticed that the OSPF domain is receiving only the 172.17.1.0/24 route and default route 0.0.0.0/0 is still missing. Which configuring must engineer apply to resolve the problem?

- ☐ router ospf 1
default-information originate always
end
- ☐ router ospf 1
redistribute bgp 65001 metric 100 route-policy BGP-TO-OSPF
end
- ☐ router ospf 1
default-metric 100
end
- ☒ router ospf 1
default-information originate
end

- A. Option A
- B. Option B
- C. Option C
- D. Option D

Answer: D

NEW QUESTION 198

Refer to the exhibit.

```
R1
interface GigabitEthernet0/0
ip address 192.168.250.2 255.255.255.0
standby 20 ip 192.168.250.1
standby 20 priority 120

R2
interface GigabitEthernet0/0
ip address 192.168.250.3 255.255.255.0
standby 20 ip 192.168.250.1
standby 20 priority 110
```

What are two effects of this configuration? (Choose two.)

- A. R1 becomes the active router.
- B. R1 becomes the standby router.
- C. If R2 goes down, R1 becomes active but reverts to standby when R2 comes back online.
- D. If R1 goes down
- E. R2 becomes active and remains the active device when R1 comes back online.
- F. If R1 goes down, R2 becomes active but reverts to standby when R1 comes back online.

Answer: AD

NEW QUESTION 202

In an SD-WAN deployment, which action in the vSmart controller responsible for?

- A. handle, maintain, and gather configuration and status for nodes within the SD-WAN fabric
- B. distribute policies that govern data forwarding performed within the SD-WAN fabric
- C. gather telemetry data from vEdge routers
- D. onboard vEdge nodes into the SD-WAN fabric

Answer: B

NEW QUESTION 207

Which component of the Cisco Cyber Threat Defense solution provides user and flow context analysis?

- A. Cisco Firepower and FireSIGHT
- B. Cisco Stealth watch system
- C. Advanced Malware Protection
- D. Cisco Web Security Appliance

Answer: B

NEW QUESTION 209

A network administrator applies the following configuration to an IOS device.

```
aaa new-model
aaa authentication login default local group tacacs+
```

What is the process of password checks when a login attempt is made to the device?

- A. A TACACS+server is checked first
- B. If that check fails, a database is checked?
- C. A TACACS+server is checked first
- D. If that check fails, a RADIUS server is checked
- E. If that check fails
- F. a local database is checked.
- G. A local database is checked first
- H. If that fails, a TACACS+server is checked, if that check fails, a RADIUS server is checked.
- I. A local database is checked first
- J. If that check fails, a TACACS+server is checked.

Answer: D

NEW QUESTION 213

Refer to the exhibit.

```
RP/0/0/CPU0:R2#debug isis adjacencies
RP/0/0/CPU0:Apr 2 20:57:00.421 : isis[1010]: RECV P2P IIH (L2)
from GigabitEthernet0/0/0/0 SNPA fa16.3ebe.a7bc: System ID R2,
Holdtime 30, length 1429
RP/0/0/CPU0:Apr 2 20:57:01.761 : isis[1010]: SEND P2P IIH (L1)
on GigabitEthernet0/0/0/0: Holdtime 30s, Length 41
```

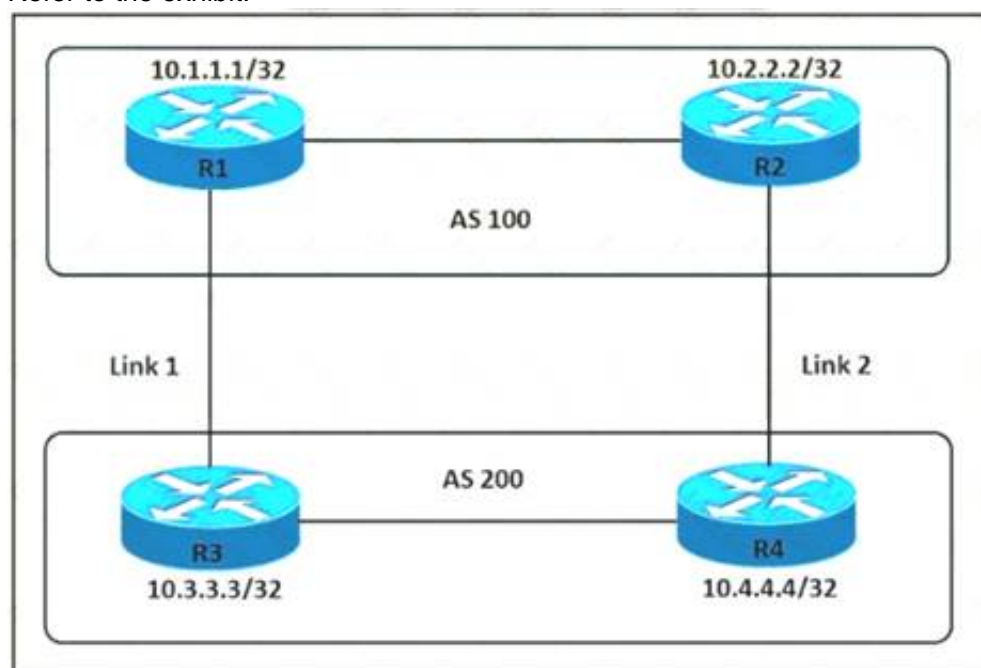
A network operator is attempting to configure an IS-IS adjacency between two routers, but the adjacency cannot be established. To troubleshoot the problem, the operator collects this debugging output. Which interfaces are misconfigured on these routers?

- A. The peer router interface is configured as Level 1 only, and the R2 interface is configured as Level 2 only
- B. The R2 interface is configured as Level 1 only, and the Peer router interface is configured as Level 2 only
- C. The R2 interface is configured as point-to-point, and the peer router interface is configured as multipoint.
- D. The peer router interface is configured as point-as-point, and the R2 interface is configured as multipoint.

Answer: C

NEW QUESTION 218

Refer to the exhibit.



An engineer must ensure that all traffic leaving AS 200 will choose Link 2 as an entry point. Assuming that all BGP neighbor relationships have been formed and that the attributes have not been changed on any of the routers, which configuration accomplish task?

- ☐ R3(config)#route-map PREPEND permit 10
R3(config-route-map)#set as-path prepend 200 200 200
- ☐ R3(config)#router bgp 200
R3(config-router)#neighbor 10.1.1.1 route-map PREPEND out
- ☐ R4(config)#route-map PREPEND permit 10
R4(config-route-map)#set as-path prepend 100 100 100
- ☐ R4(config)#router bgp 200
R4(config-router)#neighbor 10.2.2.2 route-map PREPEND in
- ☐ R3(config)#route-map PREPEND permit 10
R3(config-route-map)#set as-path prepend 100 100 100
- ☐ R3(config)#router bgp 200
R3(config-router)#neighbor 10.1.1.1 route-map PREPEND in
- ☐ R4(config)#route-map PREPEND permit 10
R4(config-route-map)#set as-path prepend 200 200 200
- ☐ R4(config)#router bgp 200
R4(config-router)#neighbor 10.2.2.2 route-map PREPEND out

- A. Option A
- B. Option B
- C. Option C
- D. Option D

Answer: A

Explanation:

R3 advertises BGP updates to R1 with multiple AS 100 so R3 believes the path to reach AS 200 via R3 is farther than R2 so R3 will choose R2 to forward traffic to AS 200.

NEW QUESTION 221

A network is being migrated from IPV4 to IPV6 using a dual-stack approach. Network management is already 100% IPV6 enabled. In a dual-stack network with two dual-stack NetFlow collections, how many flow exporters are needed per network device in the flexible NetFlow configuration?

- A. 1
- B. 2
- C. 4
- D. 8

Answer: B

NEW QUESTION 222

What is the recommended MTU size for a Cisco SD-Access Fabric?

- A. 1500
- B. 9100
- C. 4464
- D. 17914

Answer: B

NEW QUESTION 223

Refer to the exhibit.

```
aaa new-model
aaa authentication login authorizationlist tacacs+
tacacs-server host 192.168.0.202
tacacs-server key ciscotestkey
line vty 0 4
login authentication authorizationlist
```

What is the effect of this configuration?

- A. When users attempt to connect to vty lines 0 through 4, the device will authenticate them against TACACS+ if local authentication fails
- B. The device will authenticate all users connecting to vty lines 0 through 4 against TACACS+
- C. The device will allow users at 192.168.0.202 to connect to vty lines 0 through 4 using the password ciscotestkey
- D. The device will allow only users at 192.166.0.202 to connect to vty lines 0 through 4

Answer: B

NEW QUESTION 228

Where is radio resource management performed in a cisco SD-access wireless solution?

- A. DNA Center
- B. control plane node
- C. wireless controller
- D. Cisco CMX

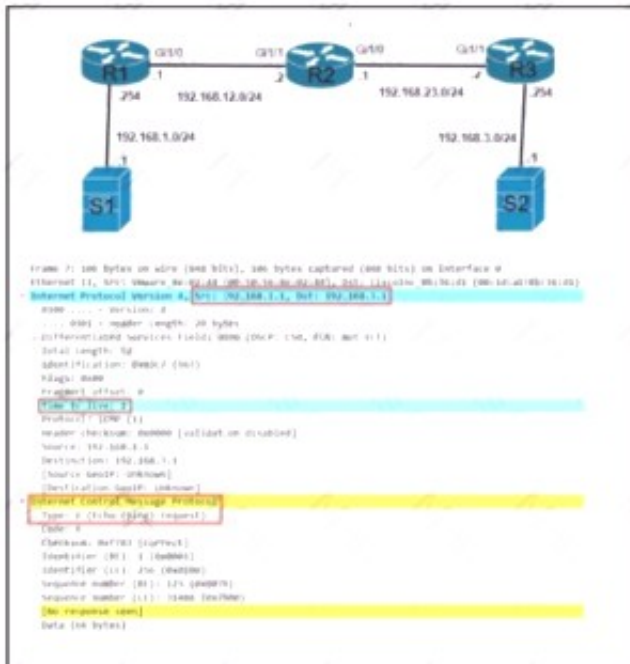
Answer: C

Explanation:

Fabric wireless controllers manage and control the fabric-mode APs using the same general model as the traditional local-mode controllers which offers the same operational advantages such as mobility control and radio resource management. A significant difference is that client traffic from wireless endpoints is not tunnelled from the APs to the wireless controller. Instead, communication from wireless clients is encapsulated in VXLAN by the fabric APs which build a tunnel to their first-hop fabric edge node. Wireless traffic is tunneled to the edge nodes as the edge nodes provide fabric services such as the Layer 3 Anycast Gateway, policy, and traffic enforcement. <https://www.cisco.com/c/en/us/td/docs/solutions/CVD/Campus/cisco-sda-design-guide.html>

NEW QUESTION 233

Refer to the exhibit.



Which troubleshooting a routing issue, an engineer issues a ping from S1 to S2. When two actions from the initial value of the TTL? (Choose two.)

- A. The packet reaches R3, and the TTL expires
- B. R2 replies with a TTL exceeded message
- C. R3 replies with a TTL exceeded message.
- D. The packet reaches R2 and the TTL expires
- E. R1 replies with a TTL exceeded message
- F. The packet reaches R1 and the TTL expires.

Answer: AC

NEW QUESTION 236

which features does Cisco EDR use to provide threat detection and response protection?

- A. containment, threat intelligence, and machine learning
- B. firewalling and intrusion prevention
- C. container-based agents
- D. cloud analysis and endpoint firewall controls

Answer: A

NEW QUESTION 237

Refer to the exhibit.



An engineer configures monitoring on SW1 and enters the show command to verify operation. What does the output confirm?

- A. SPAN session 1 monitors activity on VLAN 50 of a remote switch
- B. SPAN session 2 only monitors egress traffic exiting port FastEthernet 0/14.

- C. SPAN session 2 monitors all traffic entering and exiting port FastEthernet 0/15.
 D. RSPAN session 1 is incompletely configured for monitoring

Answer: D

Explanation:

SW1 has been configured with the following commands:

SW1(config)#monitor session 1 source remote vlan 50 SW1(config)#monitor session 2 source interface fa0/14 SW1(config)#monitor session 2 destination interface fa0/15

The session 1 on SW1 was configured for Remote SPAN (RSPAN) while session 2 was configured for local SPAN. For RSPAN we need to configure the destination port to complete the configuration.

Note: In fact we cannot create such a session like session 1 because if we only configure Source RSPAN VLAN 50 (with the command monitor session 1 source remote vlan 50) then we will receive a Type: Remote Source Session (not Remote Destination Session).

NEW QUESTION 241

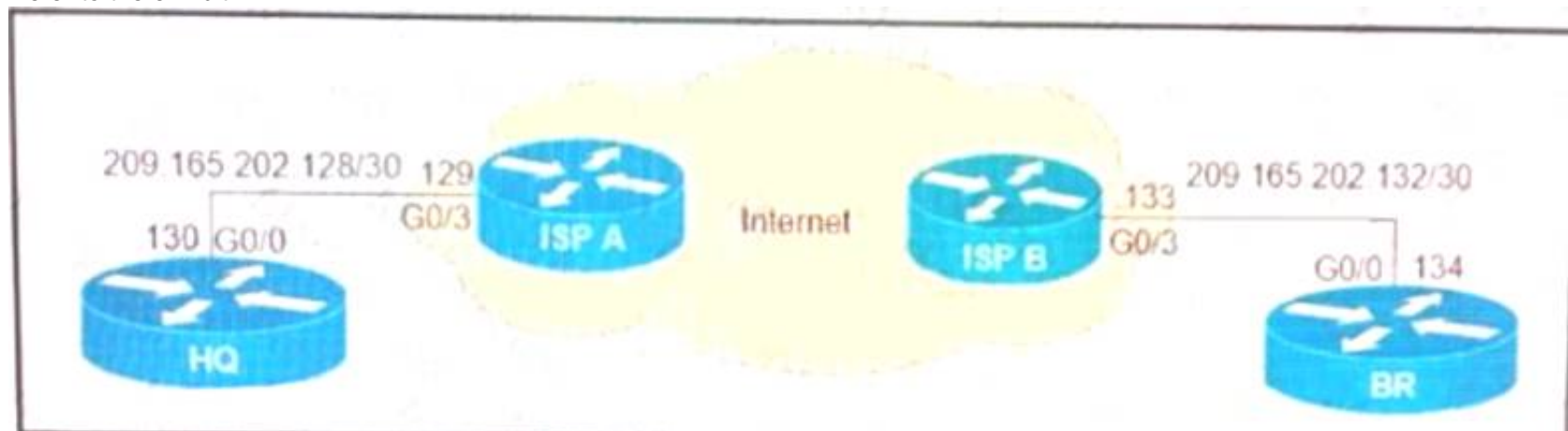
What is the centralized control policy in a Cisco SD-WAN deployment?

- A. list of ordered statements that define user access policies
 B. set of statements that defines how routing is performed
 C. set of rules that governs nodes authentication within the cloud
 D. list of enabled services for all nodes within the cloud

Answer: B

NEW QUESTION 246

Refer to the exhibit.



What is the effect of these commands on the BR and HQ tunnel interfaces?

```
BR(config)#interface tunnel1
BR(config-if)#keepalive 5 3
```

```
HQ(config)#interface tunnel1
HQ(config-if)#keepalive 5 3
```

- A. The tunnel line protocol goes down when the keepalive counter reaches 6
 B. The keepalives are sent every 5 seconds and 3 retries
 C. The keepalives are sent every 3 seconds and 5 retries
 D. The tunnel line protocol goes down when the keepalive counter reaches 5

Answer: B

NEW QUESTION 249

Wireless users report frequent disconnections from the wireless network. While troubleshooting a network engineer finds that after the user a disconnect, the connection re-establishes automatically without any input required. The engineer also notices these message logs .

```
AP 'AP2' is down Reason: Radio channel set. 6 54:04 PM
AP 'AP4' is down Reason: Radio channel set. 6 44 49 PM
AP 'AP7' is down Reason: Radio channel set. 6 34 32 PM
```

Which action reduces the user impact?

- A. increase the AP heartbeat timeout
 B. increase BandSelect
 C. enable coverage hole detection
 D. increase the dynamic channel assignment interval

Answer: D

Explanation:

These message logs inform that the radio channel has been reset (and the AP must be down briefly). With dynamic channel assignment (DCA), the radios can frequently switch from one channel to another but it also makes disruption. The default DCA interval is 10 minutes, which is matched with the time of the message logs. By increasing the DCA interval, we can reduce the number of times our users are disconnected for changing radio channels.

NEW QUESTION 254

At which Layer does Cisco DNA Center support REST controls?

- A. EEM applets or scripts
- B. Session layer
- C. YMAL output from responses to API calls
- D. Northbound APIs

Answer: D

NEW QUESTION 258

Refer to the exhibit.

An engineer is investigating why guest users are able to access other guest user devices when the users are connected to the customer guest WLAN. What action resolves this issue?

- A. implement MFP client protection
- B. implement split tunneling
- C. implement P2P blocking
- D. implement Wi-Fi direct policy

Answer: B

Explanation:

<https://www.cisco.com/c/en/us/td/docs/wireless/controller/8-1/configurationguide>

NEW QUESTION 259

A network engineer configures BGP between R1 and R2. Both routers use BGP peer group CORP and are set up to use MD5 authentication. This message is logged to the console of router R1:

```
*May 5 39:55:56.070: %TCP-6-BADAUTH: Invalid MD5 digest from 10.10.10.1 (29832) to 10.120.10.1 (179) tebleid -0
```

Which two configurations allow a peering session to form between R1 and R2? (Choose two.)

Which two configuration allow peering session to from between R1 and R2? Choose two.)

- A)
R2(config-router)#neighbor 10.10.10.1 peer-group CORP
R2(config-router)#neighbor PEER password Cisco
- B)
R2(config-router)#neighbor 10.10.10.1 peer-group CORP
R2(config-router)#neighbor CORP password Cisco
- C)
R1(config-router)#neighbor 10.10.10.1 peer-group CORP
R1(config-router)#neighbor CORP password Cisco
- D)
R1(config-router)#neighbor 10.120.10.1 peer-group CORP
R1(config-router)#neighbor CORP password Cisco
- E)
R2(config-router)#neighbor 10.120.10.1 peer-group CORP
R2(config-router)#neighbor CORP password Cisco

- A. Option A
- B. Option B
- C. Option C
- D. Option D
- E. Option E

Answer: BE

NEW QUESTION 262

Drag and drop the wireless elements on the left to their definitions on the right.

beamwidth	a graph that shows the relative intensity of the signal strength of an antenna within its space
polarization	the relative increase in signal strength of an antenna in a given direction
radiation patterns	measures the angle of an antenna pattern in which the relative signal strength is half-power below the maximum value
gain	radiated electromagnetic waves that influence the orientation of an antenna within its electromagnetic field

- A. Mastered
- B. Not Mastered

Answer: A

Explanation:

Chart, line chart Description automatically generated

NEW QUESTION 264

Which configuration restricts the amount of SSH that a router accepts 100 kbps?

A)

```
class-map match-all CoPP_SSH
  match access-group name CoPP_SSH
!
policy-map CoPP_SSH
  class CoPP_SSH
    police cir 100000
      exceed-action drop
  !
!
interface GigabitEthernet0/1
  ip address 209.165.200.225 255.255.255.0
  ip access-group BRRR00 out
  duplex auto
  speed auto
  media-type rj45
  service-policy input CoPP_SSH
!
ip access-list extended CoPP_SSH
  permit tcp any any eq 22
```

B)

```
class-map match-all CoPP_SSH
  match access-group name CoPP_SSH
!
policy-map CoPP_SSH
  class CoPP_SSH
    police cir 100000
      exceed-action drop
  !
!
interface GigabitEthernet0/1
  ip address 209.165.200.225 255.255.255.0
  ip access-group BRRR00 out
  duplex auto
  speed auto
  media-type rj45
  service-policy input CoPP_SSH
!
ip access-list extended CoPP_SSH
  deny tcp any any eq 22
```

C)

```
class-map match-all CoPP_SSH
  match access-group name CoPP_SSH
!
policy-map CoPP_SSH
  class CoPP_SSH
    police cir 100000
      exceed-action drop
  !
!
control-plane
  service-policy input CoPP_SSH
!
ip access-list extended CoPP_SSH
  permit tcp any any eq 22
```

D)

```
class-map match-all CoPP_SSH
  match access-group name CoPP_SSH
  !
policy-map CoPP_SSH
  class CoPP_SSH
    police cir 100000
      exceed-action drop
  !
  !
control-plane transmit
  service-policy input CoPP_SSH
  !
ip access-list extended CoPP_SSH
  permit tcp any any eq 22
  !
  !
```

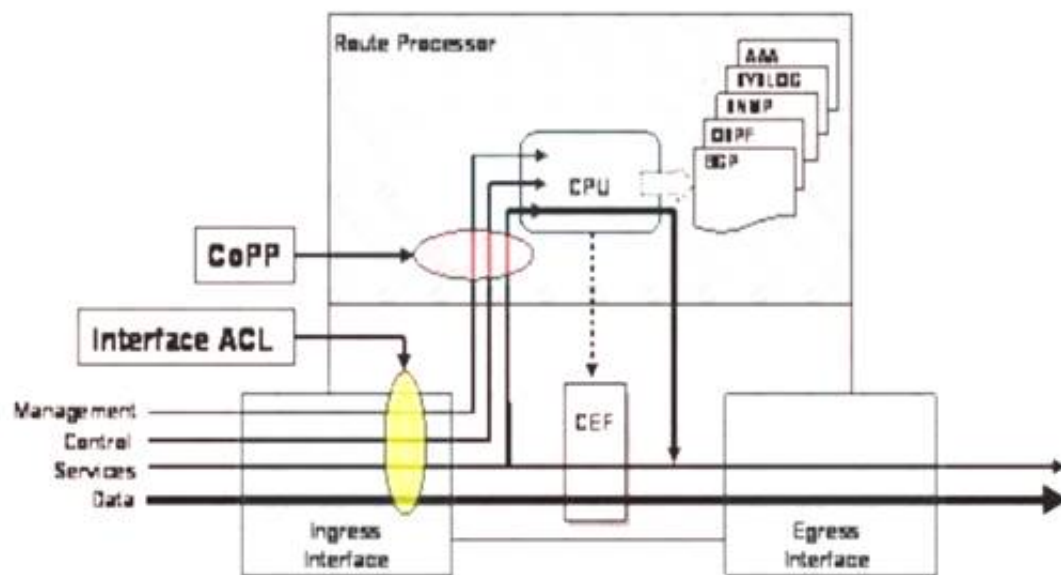
- A. Option A
- B. Option B
- C. Option C
- D. Option D

Answer: C

Explanation:

CoPP protects the route processor on network devices by treating route processor resources as a separate entity with its own ingress interface (and in some implementations, egress also). CoPP is used to police traffic that is destined to the route processor of the router such as:

- + routing protocols like OSPF, EIGRP, or BGP.
- + Gateway redundancy protocols like HSRP, VRRP, or GLBP.
- + Network management protocols like telnet, SSH, SNMP, or RADIUS.



Therefore we must apply the CoPP to deal with SSH because it is in the management plane. CoPP must be put under “control-plane” command.

NEW QUESTION 269

Refer to the exhibit.

The screenshot shows the 'WLAN Security' configuration window. The 'General' tab is selected. Under 'Fast Transition', the checkbox is unchecked. Under 'Protected Management Frame', the 'PMF' dropdown is set to 'Disabled'. Under 'WPA+WPA2 Parameters', 'WPA Policy' is unchecked and 'WPA2 Policy-AES' is checked. Under 'Authentication Key Management', '802.1X', 'CCKM', 'FT 802.1X', and 'FT PSK' are all unchecked, while 'PSK' is checked. The 'PSK Format' dropdown is set to 'ASCII'.

Based on the configuration in this WLAN security setting, Which method can a client use to authenticate to the network?

- A. text string
- B. username and password
- C. certificate
- D. RADIUS token

Answer: A

NEW QUESTION 273

How cloud deployments differ from on-prem deployments?

- A. Cloud deployments require longer implementation times than on-premises deployments
- B. Cloud deployments are more customizable than on-premises deployments.
- C. Cloud deployments require less frequent upgrades than on-premises deployments.
- D. Cloud deployments have lower upfront costs than on-premises deployments.

Answer: B

NEW QUESTION 275

How are the different versions of IGMP compatible?

- A. IGMPv2 is compatible only with IGMPv1.
- B. IGMPv2 is compatible only with IGMPv2.
- C. IGMPv3 is compatible only with IGMPv3.
- D. IGMPv3 is compatible only with IGMPv1

Answer: A

NEW QUESTION 276

Which two operational models enable an AP to scan one or more wireless channels for rouge access points and at the same time provide wireless services to clients? (Choose two.)

- A. Rouge detector
- B. Sniffer
- C. FlexConnect
- D. Local
- E. Monitor

Answer: DE

NEW QUESTION 280

What is a characteristic of a virtual machine?

- A. It must be aware of other virtual machines, in order to allocate physical resources for them
- B. It is deployable without a hypervisor to host it
- C. It must run the same operating system as its host
- D. It relies on hypervisors to allocate computing resources for it

Answer: D

NEW QUESTION 281

When configuration WPA2 Enterprise on a WLAN, which additional security component configuration is required?

- A. NTP server
- B. PKI server
- C. RADIUS server
- D. TACACS server

Answer: C

NEW QUESTION 284

Drag and drop the characteristics from the left onto the protocols they apply to on the right?

uses Dijkstra's Shortest Path First algorithm	OSPF
uses Diffused Update Algorithm	
uses bandwidth, delay, reliability, and load for routing metric	EIGRP
uses an election process	

- A. Mastered
- B. Not Mastered

Answer: A

Explanation:

Diagram Description automatically generated

NEW QUESTION 285

Refer to the exhibit.

```
with manager connect(host=192.168.0.1, port=22,
                    username='admin', password='password1', hostkey_verify=True,
                    device_params={'name': 'nexus'}) as m:
```

What does the snippet of code achieve?

- A. It creates a temporary connection to a Cisco Nexus device and retrieves a token to be used for API calls.
- B. It opens a tunnel and encapsulates the login information, if the host key is correct.
- C. It opens an ncclient connection to a Cisco Nexus device and maintains it for the duration of the context.
- D. It creates an SSH connection using the SSH key that is stored, and the password is ignored.

Answer: C

Explanation:

ncclient is a Python library that facilitates client-side scripting and application development around the NETCONF protocol.

The above Python snippet uses the ncclient to connect and establish a NETCONF session to a Nexus device (which is also a NETCONF server).

NEW QUESTION 286

The login method is configured on the VTY lines of a router with these parameters.

- The first method for authentication is TACACS
- If TACACS is unavailable, login is allowed without any provided credentials

Which configuration accomplishes this task?

- A. R1#sh run | include aaa aaa new-modelaaa authentication login VTY group tacacs+ none aaa session-id commonR1#sh run | section vty line vty 0 4password 7 0202039485748R1#sh run | include username R1#
- B. R1#sh run | include aaa aaa new-modelaaa authentication login telnet group tacacs+ none aaa session-id commonR1#sh run | section vty line vty 0 4R1#sh run | include username R1#
- C. R1#sh run | include aaa aaa new-modelaaa authentication login default group tacacs+ none aaa session-id commonR1#sh run | section vty line vty 0 4password 7 0202039485748
- D. R1#sh run | include aaa aaa new-modelaaa authentication login default group tacacs+ aaa session-id commonR1#sh run | section vty line vty 0 4transport input none R1#

Answer: C

Explanation:

According to the requirements (first use TACACS+, then allow login with no authentication), we have to use “aaa authentication login ... group tacacs+ none” for AAA command.

The next thing to check is the if the “aaa authentication login default” or “aaa authentication login list-name” is used. The ‘default’ keyword means we want to apply for all login connections (such as tty, vty, console and aux). If we use this keyword, we don’t need to configure anything else under tty, vty and aux lines. If we don’t use this keyword then we have to specify which line(s) we want to apply the authentication feature.

From above information, we can find out answer 'R1#sh run | include aaa aaa new-model
 aaa authentication login default group tacacs+ none aaa session-id common
 R1#sh run | section vty line vty 0 4
 password 7 0202039485748

If you want to learn more about AAA configuration, please read our AAA TACACS+ and RADIUS Tutorial – Part 2.

For your information, answer 'R1#sh run | include aaa aaa new-model
 aaa authentication login telnet group tacacs+ none aaa session-id common
 R1#sh run | section vty line vty 0 4
 R1#sh run | include username

R1#' would be correct if we add the following command under vty line (“line vty 0 4”): “login authentication telnet” (“telnet” is the name of the AAA list above)

NEW QUESTION 291

What is a fact about Cisco EAP-FAST?

- A. It does not require a RADIUS server certificate.
- B. It requires a client certificate.
- C. It is an IETF standard.
- D. It operates in transparent mode.

Answer: A

NEW QUESTION 293

Refer to the exhibit.

```
ip sla 10
icmp-echo 192.168.10.20
timeout 500
frequency 3
ip sla schedule 10 life forever start-time now
track 10 ip sla 10 reachability
```

The IP SLA is configured in a router. An engineer must configure an EEM applet to shut down the interface and bring it back up when there is a problem with the IP SLA. Which configuration should the engineer use?

- A. event manager applet EEM_IP_SLA event track 10 state down
- B. event manager applet EEM_IP_SLA event track 10 state unreachable
- C. event manager applet EEM_IP_SLA event sla 10 state unreachable
- D. event manager applet EEM_IP_SLA event sla 10 state down

Answer: A

Explanation:

The ip sla 10 will ping the IP 192.168.10.20 every 3 seconds to make sure the connection is still up. We can configure an EEM applet if there is any problem with this IP SLA via the command event track 10 state down.

NEW QUESTION 296

Drag and drop the Qos mechanisms from the left to the correct descriptions on the right

service policy	mechanism to create a scheduler for packets prior to forwarding
policy map	mechanism to apply a QoS policy to an interface
DSCP	portion of the IP header used to classify packets

- A. Mastered
- B. Not Mastered

Answer: A

Explanation:

A picture containing diagram Description automatically generated

NEW QUESTION 301

Which protocol is used to encrypt control plane traffic between SD-WAN controllers and SD-WAN endpoints?

- A. DTLS
- B. IPsec
- C. PGP
- D. HTTPS

Answer: A

NEW QUESTION 304

How is 802.11 traffic handled in a fabric-enabled SSID?

- A. centrally switched back to WLC where the user traffic is mapped to a VXLAN on the WLC
- B. converted by the AP into 802.3 and encapsulated into VXLAN
- C. centrally switched back to WLC where the user traffic is mapped to a VLAN on the WLC
- D. converted by the AP into 802.3 and encapsulated into a VLAN

Answer: B

NEW QUESTION 307

Drag and drop the characteristics from the left onto the appropriate infrastructure deployment types on the right.

customizable hardware, purpose-built systems	On Premises
easy to scale and upgrade	
more suitable for companies with specific regulatory or security requirements	
resources can be over or underutilized as requirements vary	Cloud
requires a strong and stable internet connection	
built-in, automated data backups and recovery	

- A. Mastered
 B. Not Mastered

Answer: A

Explanation:

customizable hardware, purpose-built systems	On Premises
easy to scale and upgrade	
more suitable for companies with specific regulatory or security requirements	
resources can be over or underutilized as requirements vary	Cloud
requires a strong and stable internet connection	
built-in, automated data backups and recovery	

NEW QUESTION 308

A company has an existing Cisco 5520 HA cluster using SSO. An engineer deploys a new single Cisco Catalyst 9800 WLC to test new features. The engineer successfully configures a mobility tunnel between the 5520 cluster and 9800 WLC. Client connected to the corporate WLAN roam seamlessly between access points on the 5520 and 9800 WLC. After a failure on the primary 5520 WLC, all WLAN services remain functional; however, Client roam between the 5520 and 9800 controllers without dropping their connection. Which feature must be configured to remedy the issue?

- A. mobility MAC on the 5520 cluster
 B. mobility MAC on the 9800 WLC
 C. new mobility on the 5520 cluster
 D. new mobility on the 9800 WLC

Answer: B

NEW QUESTION 312

Which outbound access list, applied to the WAN interface of a router, permits all traffic except for http traffic sourced from the workstation with IP address 10.10.10.1?

- A)

```
ip access-list extended 100
deny tcp host 10.10.10.1 any eq 80
permit ip any any
```

 B)

```
ip access-list extended 200
deny tcp host 10.10.10.1 eq 80 any
permit ip any any
```

C)

```
ip access-list extended NO_HTTP
deny tcp host 10.10.10.1 any eq 80
```

D)

```
ip access-list extended 10
deny tcp host 10.10.10.1 any eq 80
permit ip any any
```

- A. Option A
- B. Option B
- C. Option C
- D. Option D

Answer: A

NEW QUESTION 317

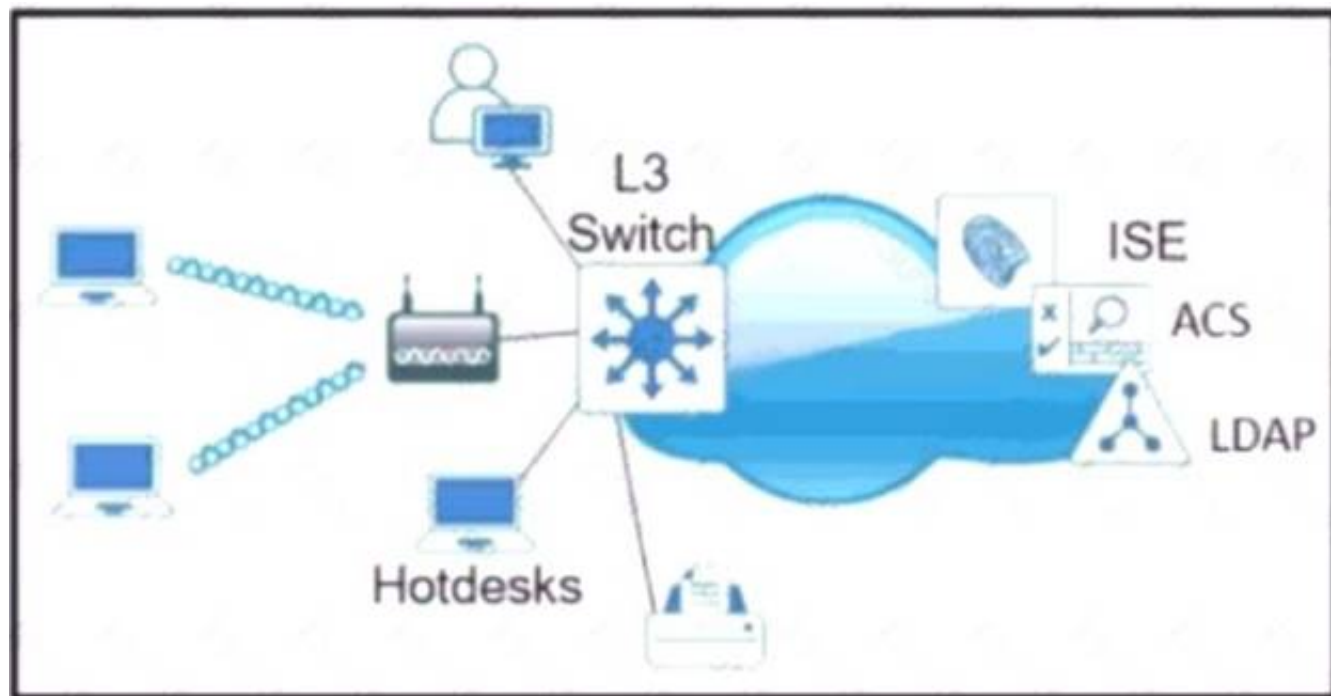
Which technology is used as the basis for the cisco sd-access data plane?

- A. IPsec
- B. LISP
- C. VXLAN
- D. 802.1Q

Answer: C

NEW QUESTION 321

Refer to the exhibit



Which single security feature is recommended to provide Network Access Control in the enterprise?

- A. MAB
- B. 802.1X
- C. WebAuth
- D. port security sticky MAC

Answer: B

NEW QUESTION 325

Which two threats does AMP4E have the ability to block? (Choose two.)

- A. DDoS
- B. ransomware
- C. Microsoft Word macro attack
- D. SQL injection
- E. email phishing

Answer: BE

NEW QUESTION 329

Which characteristic distinguishes Ansible from Chef?

- A. Ansible lacks redundancy support for the master server
- B. Chef runs two masters in an active/active mode.
- C. Ansible uses Ruby to manage configuration

- D. Chef uses YAML to manage configurations.
- E. Ansible pushes the configuration to the client.
- F. Chef client pulls the configuration from the server.
- G. The Ansible server can run on Linux, Unix or Windows.
- H. The Chef server must run on Linux or Unix.

Answer: C

NEW QUESTION 334

What is a benefit of data modeling languages like YANG?

- A. They enable programmers to change or write their own application within the device operating system.
- B. They create more secure and efficient SNMP OIDs.
- C. They make the CLI simpler and more efficient.
- D. They provide a standardized data structure, which results in configuration scalability and consistency.

Answer: D

Explanation:

Yet Another Next Generation (YANG) is a language which is only used to describe data models (structure). It is not XML or JSON.

NEW QUESTION 335

.....

THANKS FOR TRYING THE DEMO OF OUR PRODUCT

Visit Our Site to Purchase the Full Set of Actual 350-401 Exam Questions With Answers.

We Also Provide Practice Exam Software That Simulates Real Exam Environment And Has Many Self-Assessment Features. Order the 350-401 Product From:

<https://www.2passeasy.com/dumps/350-401/>

Money Back Guarantee

350-401 Practice Exam Features:

- * 350-401 Questions and Answers Updated Frequently
- * 350-401 Practice Questions Verified by Expert Senior Certified Staff
- * 350-401 Most Realistic Questions that Guarantee you a Pass on Your FirstTry
- * 350-401 Practice Test Questions in Multiple Choice Formats and Updatesfor 1 Year