

300-410 Dumps

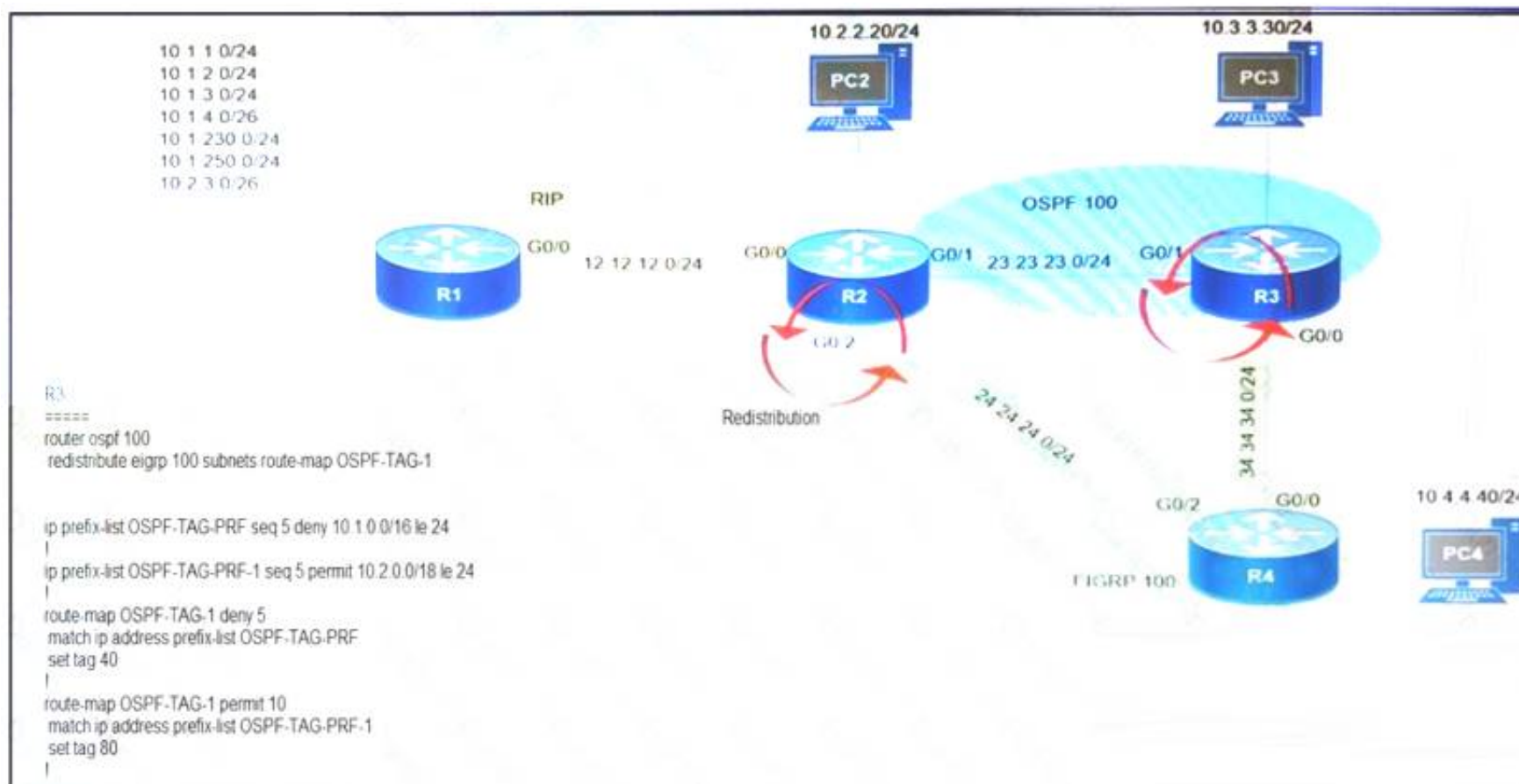
Implementing Cisco Enterprise Advanced Routing and Services (ENARSI)

<https://www.certleader.com/300-410-dumps.html>



NEW QUESTION 1

Refer to the exhibit.



Which subnet is redistributed from EIGRP to OSPF routing protocols?

- A. 10.2.2.0/24
- B. 10.1.4.0/26
- C. 10.1.2.0/24
- D. 10.2.3.0/26

Answer: A

NEW QUESTION 2

An engineer is trying to copy an IOS file from one router to another router by using TFTP. Which two actions are needed to allow the file to copy? (Choose two.)

- A. Copy the file to the destination router with the copy tftp: flash: command
- B. Enable the TFTP server on the source router with the tftp-server flash: <filename> command
- C. TFTP is not supported in recent IOS versions, so an alternative method must be used
- D. Configure a user on the source router with the username tftp password tftp command
- E. Configure the TFTP authentication on the source router with the tftp-server authentication local command

Answer: AB

NEW QUESTION 3

A network engineer is investigating a flapping (up/down) interface issue on a core switch that is synchronized to an NTP server. Log output currently does not show the time of the flap. Which command allows the logging on the switch to show the time of the flap according to the clock on the device?

- A. service timestamps log uptime
- B. clock summer-time mst recurring 2 Sunday mar 2:00 1 Sunday nov 2:00
- C. service timestamps log datetime localtime show-timezone
- D. clock calendar-valid

Answer: A

NEW QUESTION 4

Refer to the exhibit.

```

R1(config)#route-map ADD permit 20
R1(config-route-map)#set tag 1

R1(config)#router ospf1
R1(config-router)#redistribute rip subnets route-map ADD
  
```

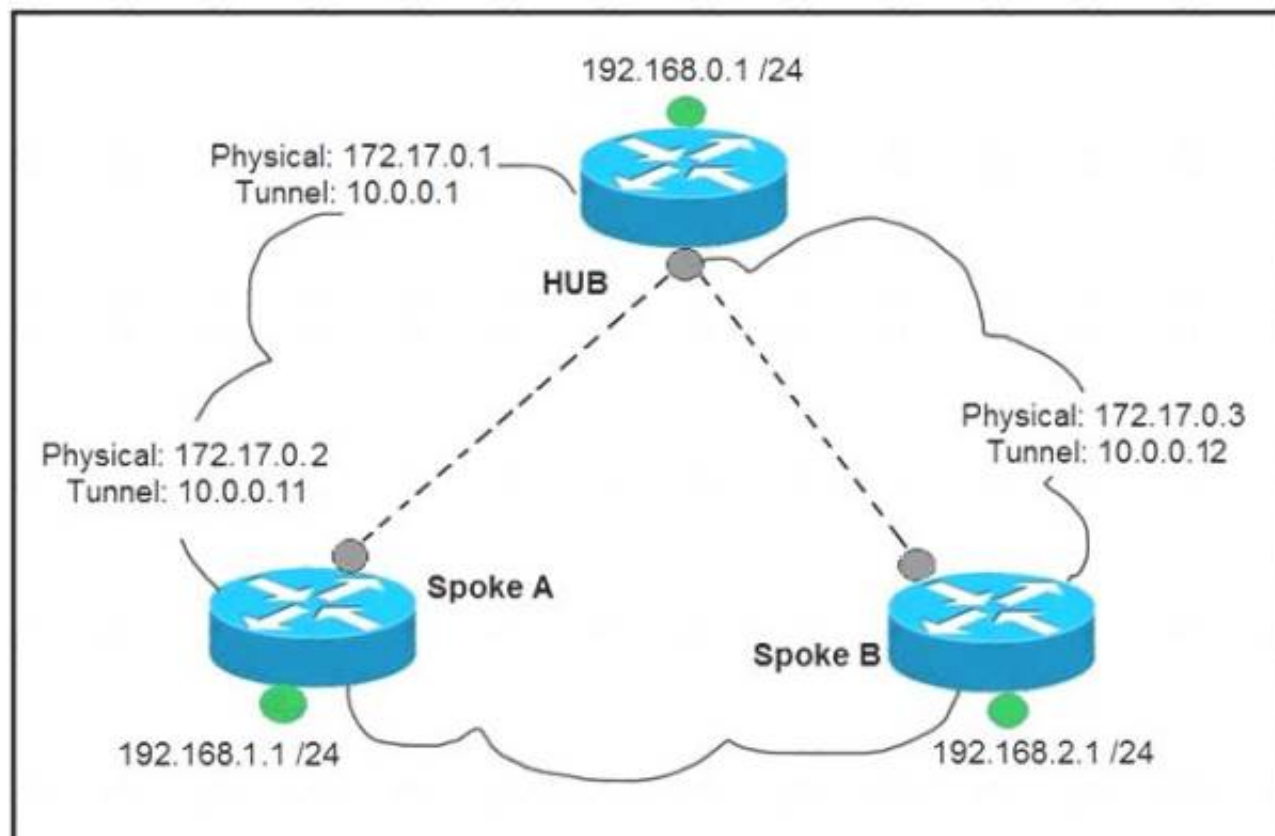
Which statement about R1 is true?

- A. OSPF redistributes RIP routes only if they have a tag of one.
- B. RIP learned routes are distributed to OSPF with a tag value of one.
- C. R1 adds one to the metric for RIP learned routes before redistributing to OSPF.
- D. RIP routes are redistributed to OSPF without any changes.

Answer: B

NEW QUESTION 5

Refer to the exhibit.



Which interface configuration must be configured on the spoke A router to enable a dynamic DMVPN tunnel with the spoke B router?

- A. **interface Tunnel0**
description mGRE – DMVPN Tunnel
ip address 10.0.0.11 255.255.255.0
ip nhrp map multicast dynamic
ip nhrp network-id 1
tunnel source 10.0.0.1
tunnel destination FastEthernet 0/0
tunnel mode gre multipoint
- B. **interface Tunnel0**
ip address 10.0.0.11 255.255.255.0
ip nhrp network-id 1
tunnel source FastEthernet 0/0
tunnel mode gre multipoint
ip nhrp nhs 10.0.0.1
ip nhrp map 10.0.0.1 172.17.0.1
- C. **interface Tunnel0**
ip address 10.1.0.11 255.255.255.0
ip nhrp network-id 1
tunnel source 1.1.1.10
ip nhrp map 10.0.0.11 172.17.0.2
tunnel mode gre
- D. **interface Tunnel0**
ip address 10.0.0.11 255.255.255.0
ip nhrp map multicast static
ip nhrp network-id 1
tunnel source 10.0.0.1
tunnel mode gre multipoint

- A. Option A
- B. Option B
- C. Option C
- D. Option D

Answer: A

NEW QUESTION 6

Drag and drop the DHCP messages from the left onto the correct uses on the right.

DHCPACK	server-to-client communication, refusing the request for configuration parameters
DHCPINFORM	client-to-server communication, indicating that the network address is already in use
DHCPNAK	server-to-client communication with configuration parameters, including committed network address
DHCPDECLINE	client-to-server communication, asking for only local configuration parameters that the client has already externally configured as an address

- A. Mastered
B. Not Mastered

Answer: A

Explanation:

DHCPACK	DHCPNAK
DHCPINFORM	DHCPDECLINE
DHCPNAK	DHCPACK
DHCPDECLINE	DHCPINFORM

NEW QUESTION 7

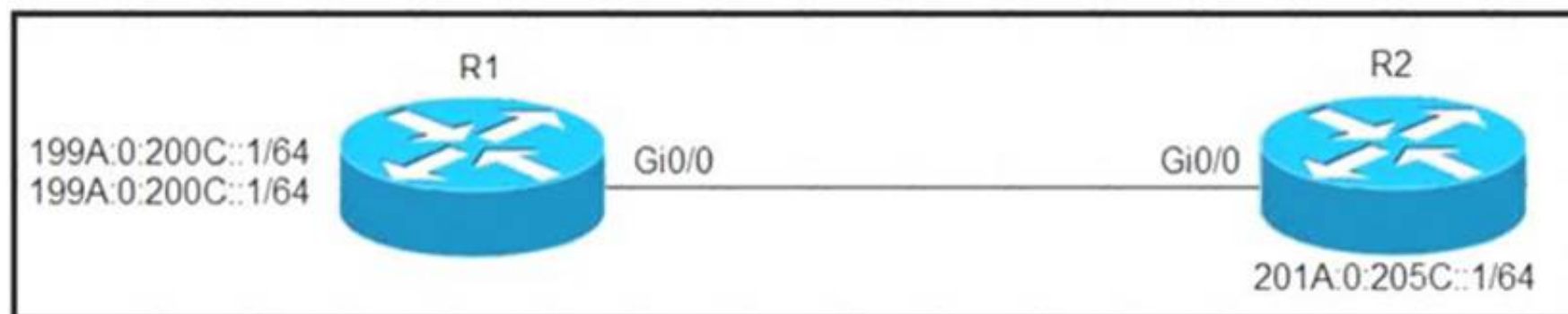
Which command displays the IP routing table information that is associated with VRF-Lite?

- A. show ip vrf
B. show ip route vrf
C. show run vrf
D. show ip protocols vrf

Answer: B

NEW QUESTION 8

Refer to the exhibit.



Which configuration denies Telnet traffic to router 2 from 198A:0:200C::1/64?

- A. `ipv6 access-list Deny_Telnet sequence 10 deny tcp host 198A:0:200C::1/64 host 201A:0:205C::1/64 eq telnet`
`!`
`int Gi0/0`
`ipv6 traffic-filter Deny_Telnet in`
`!`
- B. `ipv6 access-list Deny_Telnet sequence 10 deny tcp host 198A:0:200C::1/64 host 201A:0:205C::1/64 eq telnet`
`!`
`int Gi0/0`
`ipv6 access-map Deny_Telnet in`
`!`
- C. `ipv6 access-list Deny_Telnet sequence 10 deny tcp host 198A:0:200C::1/64 host 201A:0:205C::1/64`
`!`
`int Gi0/0`
`ipv6 access-map Deny_Telnet in`
`!`
- D. `ipv6 access-list Deny_Telnet sequence 10 deny tcp host 198A:0:200C::1/64 host 201A:0:205C::1/64`
`!`
`int Gi0/0`
`ipv6 traffic-filter Deny_Telnet in`
`!`

- A. Option A
B. Option B
C. Option C
D. Option D

Answer: A

NEW QUESTION 9

Refer to the exhibit.

```
R1#show running-config | section dhcp
ip dhcp excluded-address 192.168.1.1 192.168.1.49
ip dhcp pool DHCP
  network 192.168.1.0 255.255.255.0
  default-router 192.168.1.1
  dns-server 8.8.8.8
  lease 0 12
```

Users report that IP addresses cannot be acquired from the DHCP server. The DHCP server is configured as shown. About 300 total nonconcurrent users are using this DHCP server, but none of them are active for more than two hours per day. Which action fixes the issue within the current resources?

- A. Modify the subnet mask to the network 192.168.1.0 255.255.254.0 command in the DHCP pool
B. Configure the DHCP lease time to a smaller value
C. Configure the DHCP lease time to a bigger value
D. Add the network 192.168.2.0 255.255.255.0 command to the DHCP pool

Answer: B

NEW QUESTION 10

Refer to the exhibit.

```
service timestamps debug datetime msec
service timestamps log datetime
clock timezone MST -7 0
clock summer-time MST recurring
ntp authentication-key 1 md5 00101A0B0152181206224747071E 7
ntp server 10.10.10.10
```

R1#show clock

```
*06:13:44.045 MST Sun Dec 30 2018
```

R1#conf t

Enter configuration commands, one per line. End with CNTL/Z.

R1(config) #logging host 10.10.10.20

R1(config) #end

R1#

```
*Dec 30 13:15:28: %SYS-5-CONFIG_I: Configured from console by console
```

R1#

```
*Dec 30 13:15:28: %SYS-6-LOGGINGHOST_STARTSTOP: Logging to host 10.10.10.20 port 514
started - CLI initiated
```

An administrator noticed that after a change was made on R1, the timestamps on the system logs did not match the clock. What is the reason for this error?

- A. An authentication error with the NTP server results in an incorrect timestamp.
- B. The keyword localtime is not defined on the timestamp service command.
- C. The NTP server is in a different time zone.
- D. The system clock is set incorrectly to summer-time hours.

Answer: D

NEW QUESTION 10

Refer to the exhibit.

```
R1#show policy-map control-plane
Control Plane
  Service-policy input: CoPP-BGP
    Class-map: BGP (match all)
      2716 packets, 172071 bytes
      5 minute offered rate 0000 bps, drop rate 0000 bps
      Match: access-group name BGP
      drop

    Class-map: class-default (match-any)
      5212 packets, 655966 bytes
      5 minute offered rate 0000 bps, drop rate 0000 bps
      Match: any
```

What is the result of applying this configuration?

- A. The router can form BGP neighborships with any other device.
- B. The router cannot form BGP neighborships with any other device.
- C. The router cannot form BGP neighborships with any device that is matched by the access list named "BGP".
- D. The router can form BGP neighborships with any device that is matched by the access list named "BGP".

Answer: D

NEW QUESTION 14

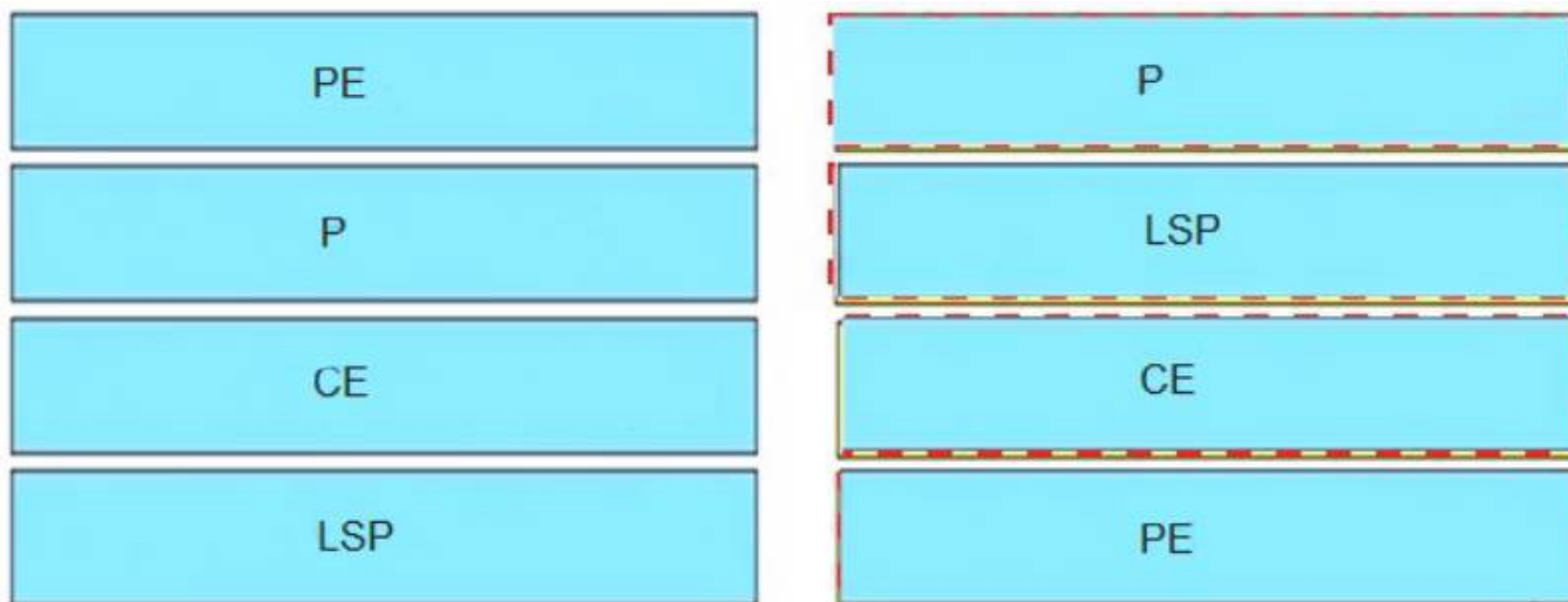
Drag and drop the MPLS terms from the left onto the correct definitions on the right.

PE	device that forwards traffic based on labels
P	path that the labeled packet takes
CE	device that is unaware of MPLS labeling
LSP	device that removes and adds the MPLS labeling

- A. Mastered
B. Not Mastered

Answer: A

Explanation:



NEW QUESTION 19

Refer to the exhibit.

```
access-list 100 deny tcp any any eq 465
access-list 100 deny tcp any eq 465 any
access-list 100 permit tcp any any eq 80
access-list 100 permit tcp any eq 80 any
access-list 100 permit udp any any eq 443
access-list 100 permit udp any eq 443 any
```

During troubleshooting it was discovered that the device is not reachable using a secure web browser. What is needed to fix the problem?

- A. permit tcp port 443
B. permit udp port 465
C. permit tcp port 465
D. permit tcp port 22

Answer: A

NEW QUESTION 24

What is a prerequisite for configuring BFD?

- A. Jumbo frame support must be configured on the router that is using BFD.
B. All routers in the path between two BFD endpoints must have BFD enabled.
C. Cisco Express Forwarding must be enabled on all participating BFD endpoints.
D. To use BFD with BGP, the timers 3 9 command must first be configured in the BGP routing process.

Answer: C

NEW QUESTION 27

Refer to the exhibit.

```
R1#show ip ssh
SSH Disabled – version 1.99
%Please create RSA keys to enable SSH (and of atleast 768 bits for SSH v2).
Authentication timeout: 120 secs; Authentication retries: 3
Minimum expected Diffie Hellman key size: 1024 bits
IOS Keys in SECSH format (ssh-rsa, base64 encoded) : NONE
R1#
```

An engineer is trying to connect to a device with SSH but cannot connect. The engineer connects by using the console and finds the displayed output when troubleshooting. Which command must be used in configuration mode to enable SSH on the device?

- A. no ip ssh disable
- B. ip ssh enable
- C. ip ssh version 2
- D. crypto key generate rsa

Answer: D

NEW QUESTION 31

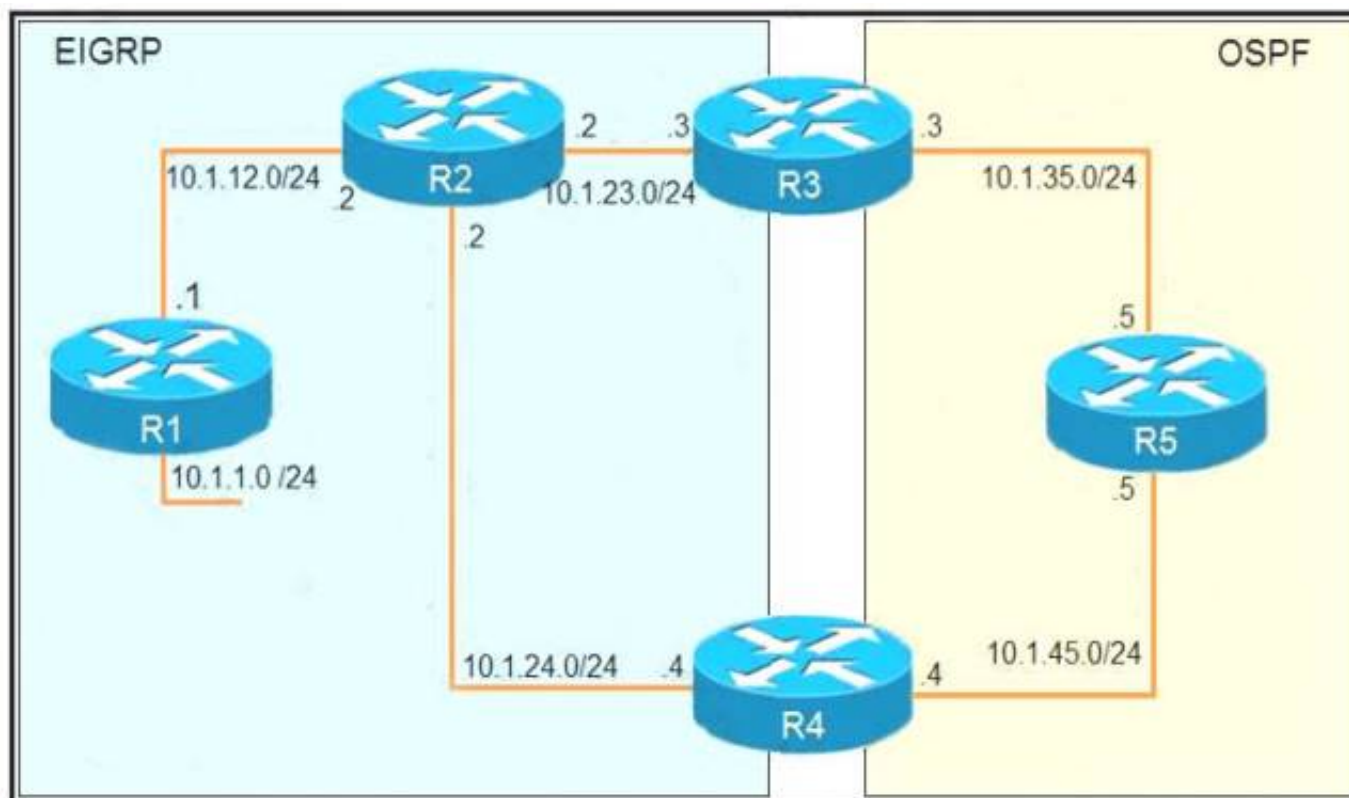
An engineer configured the wrong default gateway for the Cisco DNA Center enterprise interface during the install. Which command must the engineer run to correct the configuration?

- A. sudo maglev-config update
- B. sudo maglev install config update
- C. sudo maglev reinstall
- D. sudo update config install

Answer: A

NEW QUESTION 36

Refer to the exhibit.



```

R1
router eigrp 1
 redistribute connected
 network 10.1.12.1 0.0.0.0

R3
router ospf 1
 redistribute eigrp 1 subnets
 network 10.1.35.3 0.0.0.0 area 0

R4
router eigrp 1
 redistribute ospf 1 metric 2000000 1 255 1 1500
!
router ospf 1
 network 10.1.45.4 0.0.0.0 area 0

R5#traceroute 10.1.1.1

Type escape sequence to abort.
Tracing the route to 10.1.1.1

 1 10.1.35.3 80 msec 44 msec 20 msec
 2 10.1.23.2 44 msec 104 msec 64 msec
 3 10.1.24.4 44 msec 64 msec 40 msec
 4 10.1.45.5 24 msec 40 msec 20 msec
 5 10.1.35.3 92 msec 144 msec 148 msec
 6 10.1.23.2 108 msec 76 msec 80 msec
    <output truncated>
    
```

The output of the trace route from R5 shows a loop in the network. Which configuration prevents this loop?

A)

R3

```
router ospf 1
```

```
 redistribute eigrp 1 subnets route-map SET-TAG
```

```
!
```

```
route-map SET-TAG permit 10
```

```
 set tag 1
```

R4

```
router eigrp 1
```

```
 redistribute ospf 1 metric 2000000 1 255 1 1500 route-map FILTER-TAG
```

```
!
```

```
route-map FILTER-TAG deny 10
```

```
 match tag 1
```

```
!
```

```
route-map FILTER-TAG permit 20
```

B)

```
R3
router eigrp 1
 redistribute OSPF 1 route-map SET-TAG
!
route-map SET-TAG permit 10
 set tag 1
```

```
R4
router eigrp 1
 redistribute ospf 1 metric 2000000 1 255 1 1500 route-map FILTER-TAG
 network 10.1.24.4 0.0.0.0
!
route-map FILTER-TAG deny 10
 match tag 1
!
route-map FILTER-TAG permit 20
```

C)

```
R3
router ospf 1
 redistribute eigrp 1 subnets route-map SET-TAG
!
route-map SET-TAG permit 10
 set tag 1
```

```
R4
router eigrp 1
 redistribute ospf 1 metric 2000000 1 255 1 1500 route-map FILTER-TAG
!
route-map FILTER-TAG permit 10
 match tag 1
```

D)

```
R3
router ospf 1
 redistribute eigrp 1 subnets route-map SET-TAG
!
route-map SET-TAG deny 10
 set tag 1
```

```
R4
router eigrp 1
 redistribute ospf 1 metric 2000000 1 255 1 1500 route-map FILTER-TAG
!
route-map FILTER-TAG deny 10
 match tag 1
```

- A. Option A
- B. Option B
- C. Option C
- D. Option D

Answer: B

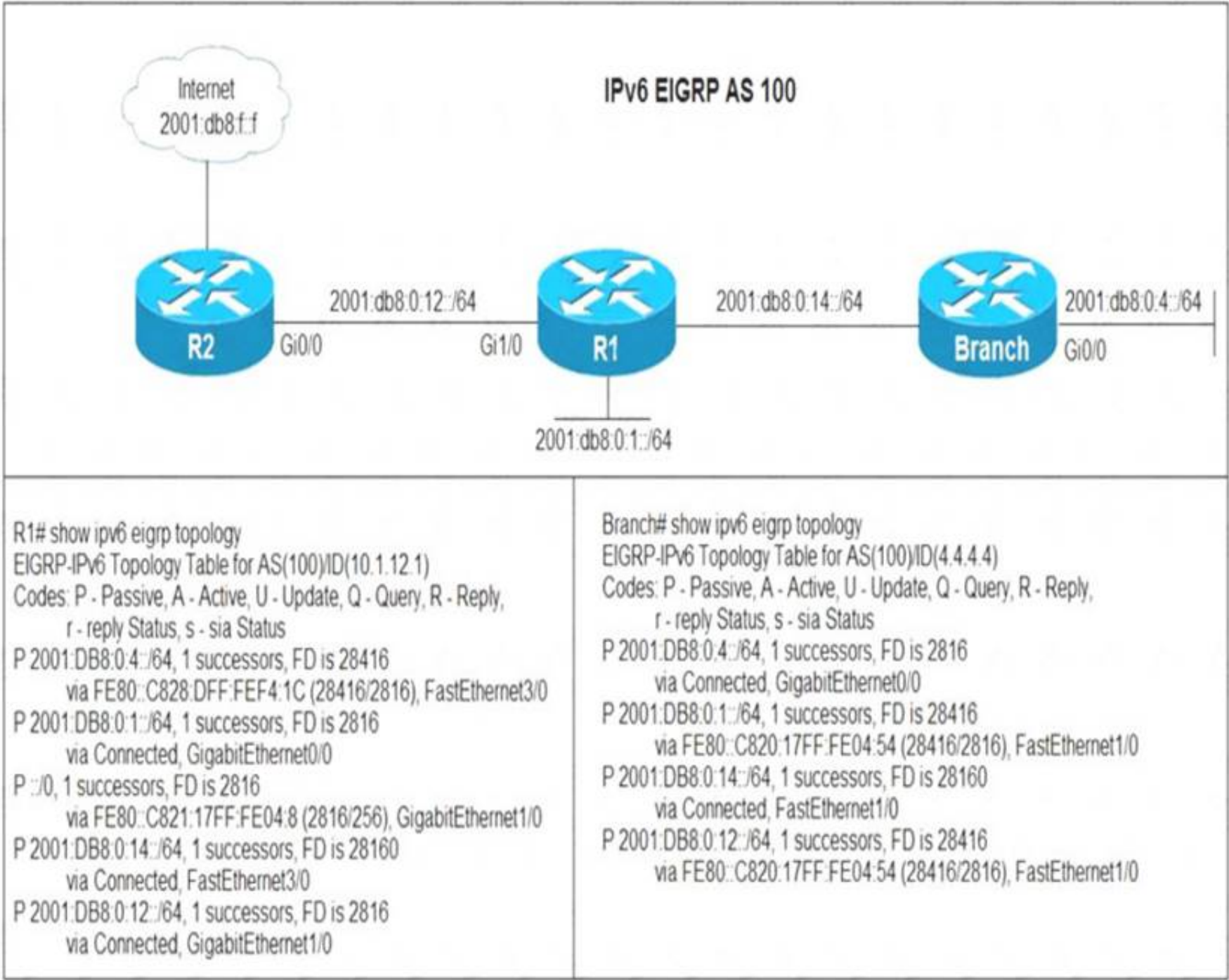
NEW QUESTION 39

Which statement about route distinguishers in an MPLS network is true?

- A. Route distinguishers allow multiple instances of a routing table to coexist within the edge router.
- B. Route distinguishers are used for label bindings.
- C. Route distinguishers make a unique VPNv4 address across the MPLS network.
- D. Route distinguishers define which prefixes are imported and exported on the edge router.

Answer: C

NEW QUESTION 44
Refer to the exhibit.



Users in the branch network of 2001:db8:0:4::/64 report that they cannot access the Internet. Which command is issued in IPv6 router EIGRP 100 configuration mode to solve this issue?

- A. Issue the eigrp stub command on R1.
- B. Issue the no eigrp stub command on R1.
- C. Issue the eigrp stub command on R2.
- D. Issue the no eigrp stub command on R2.

Answer: A

NEW QUESTION 49

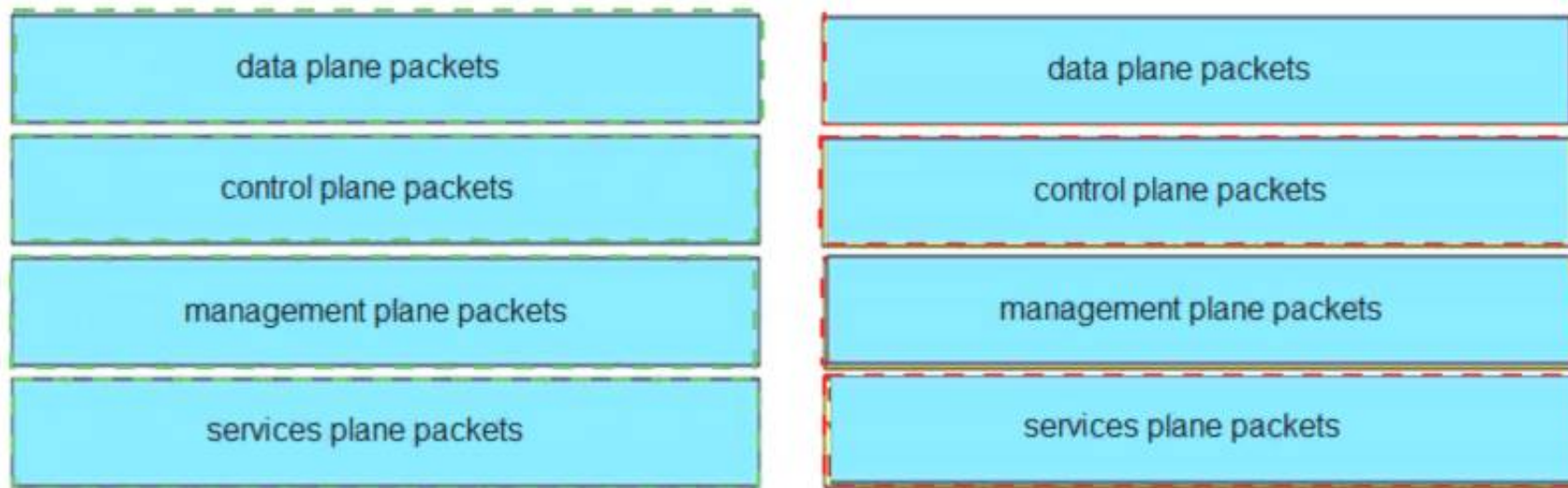
Drag and drop the packet types from the left onto the correct descriptions on the right.

data plane packets	user-generated packets that are always forwarded by network devices to other end-station devices
control plane packets	network device generated or received packets that are used for the creation of the network itself
management plane packets	network device generated or received packets; packets that are used to operate the network
services plane packets	user-generated packets that are forwarded by network devices to other end-station devices, but that require higher priority than the normal traffic by the network devices

- A. Mastered
- B. Not Mastered

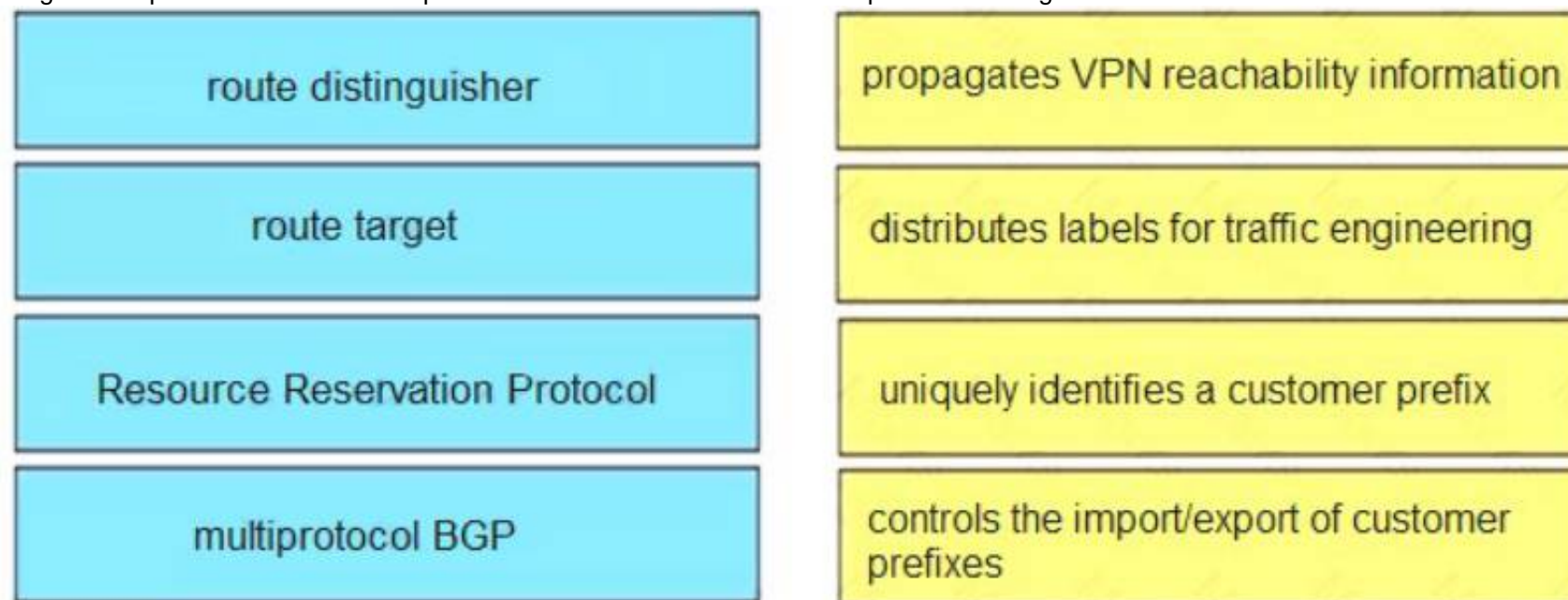
Answer: A

Explanation:



NEW QUESTION 50

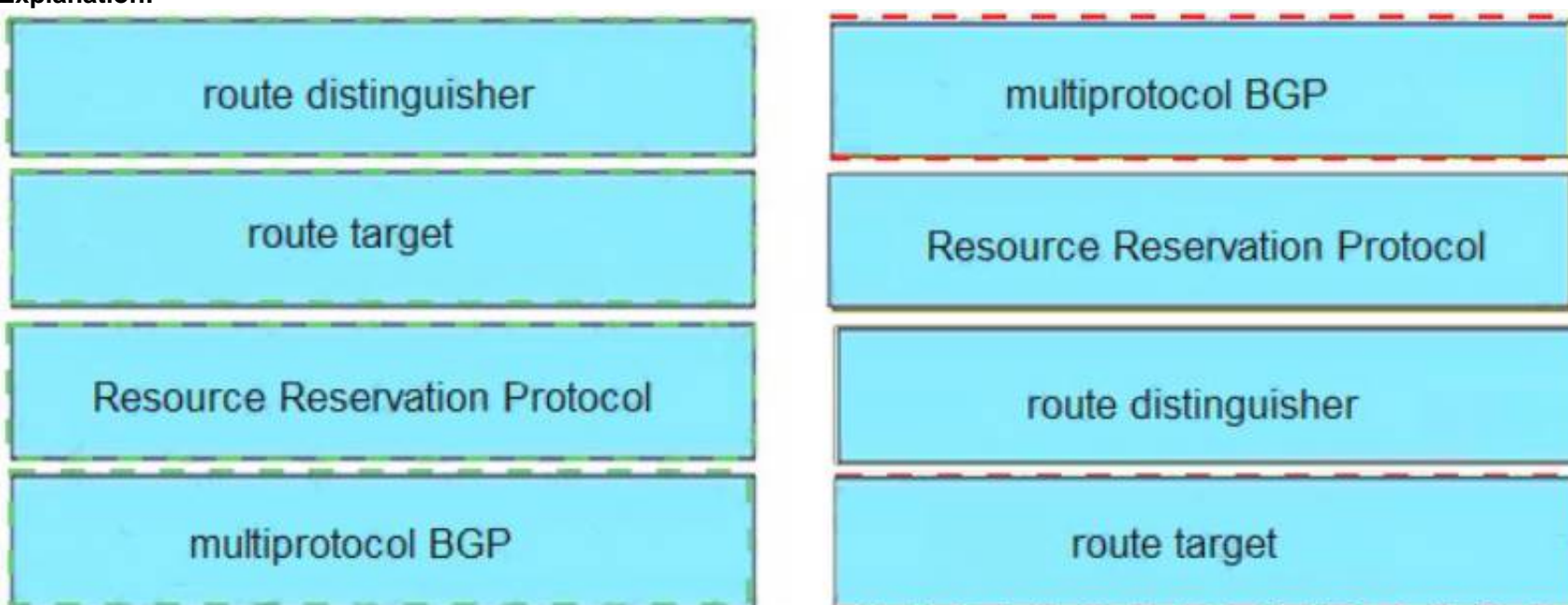
Drag and drop the MPLS VPN concepts from the left onto the correct descriptions on the right.



- A. Mastered
- B. Not Mastered

Answer: A

Explanation:



NEW QUESTION 53

Which method changes the forwarding decision that a router makes without first changing the routing table or influencing the IP data plane?

- A. nonbroadcast multiaccess
- B. packet switching
- C. policy-based routing
- D. forwarding information base

Answer: C

NEW QUESTION 57

Refer to the exhibit.


```
Router#sh ip route ospf
<output omitted>
Gateway is last resort is not set

    10.0.0.0/24 is subnetted, 1 subnets
      O   E2   10.0.0.0 [110/20] via 192.168.12.2, 00:00:10, Ethernet0/0
      O     192.168.3.0/24 [110/20] via 192.168.12.2, 00:00:50, Ethernet0/0
Router#

Router#show ip bgp
<output omitted>
      Network          Next Hop      Metric      LocPrf      Weight      Path
>*   192.168.1.1/32     0.0.0.0        0           32768       ?
>*   192.168.3.0        192.168.12.2   20          32768       ?
>*   192.168.12.0       0.0.0.0        0           32768       ?
Router#show running-config | section router bgp
router bgp 65000
 bgp log-neighbor-changes
 redistribute ospf 1
Router#
```

An engineer is trying to redistribute OSPF to BGP, but not all of the routes are redistributed. What is the reason for this issue?

- A. By default, only internal routes and external type 1 routes are redistributed into BGP
- B. Only classful networks are redistributed from OSPF to BGP
- C. BGP convergence is slow, so the route will eventually be present in the BGP table
- D. By default, only internal OSPF routes are redistributed into BGP

Answer: A

NEW QUESTION 60

Refer to the exhibit.

```
Router#show ip route
<output omitted>
Gateway of last resort is not set

    192.168.1.0/32 is subnetted, 1 subnets
      O   192.168.1.1 [110/11] via 192.168.12.1, 16:56:40, Ethernet0/0
    192.168.2.0/24 is variably subnetted, 2 subnets, 2 masks
      C   192.168.2.0/24 is directly connected, Loopback0
      L   192.168.2.2/32 is directly connected, Loopback0
    192.168.3.0/24 is variably subnetted, 2 subnets, 2 masks
      C   192.168.3.0/24 is directly connected, Ethernet0/1
      L   192.168.3.1/32 is directly connected, Ethernet0/1
    192.168.12.0/24 is variably subnetted, 2 subnets, 2 masks
      C   192.168.12.0/24 is directly connected, Ethernet0/0
      L   192.168.12.2/32 is directly connected, Ethernet0/0
Router#show running-config | section ospf
router ospf 1
 summary-address 10.0.0.0 255.0.0.0
 redistribute static subnets
 network 192.168.3.0 0.0.0.255 area 0
 network 192.168.12.0 0.0.0.255 area 0
Router#
```

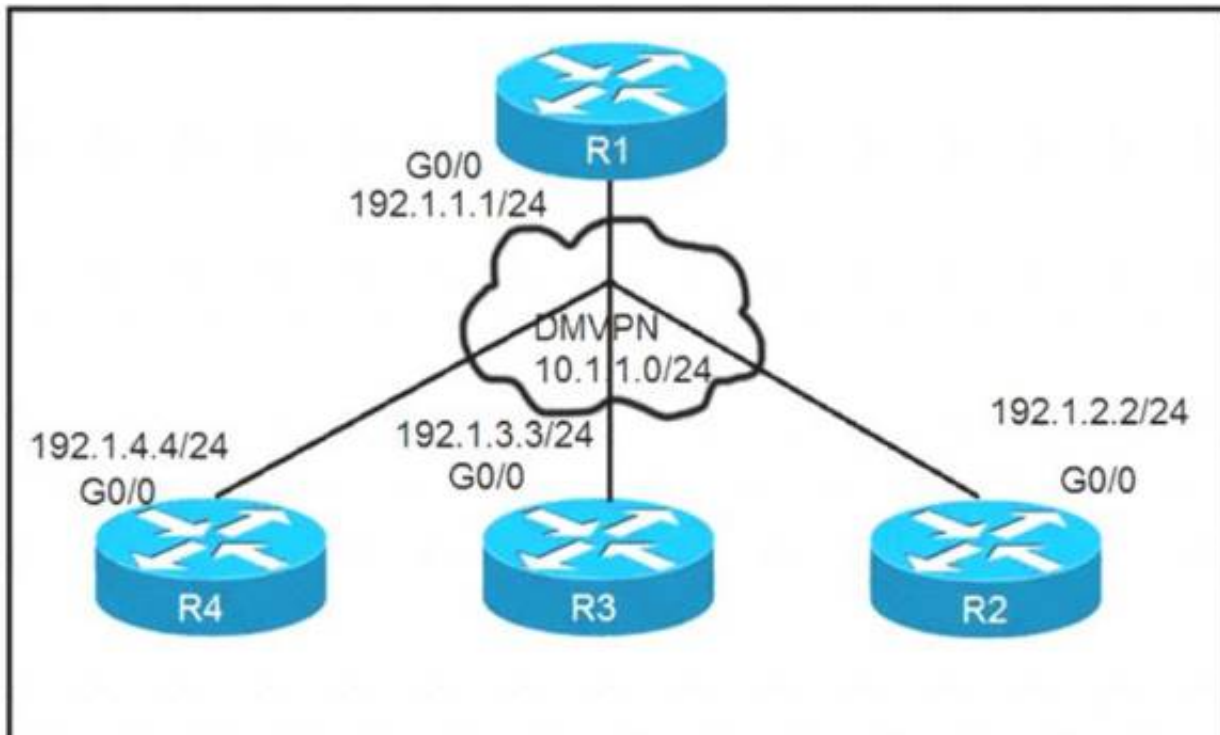
An engineer is trying to generate a summary route in OSPF for network 10.0.0.0/8, but the summary route does not show up in the routing table. Why is the summary route missing?

- A. The summary-address command is used only for summarizing prefixes between areas.
- B. The summary route is visible only in the OSPF database, not in the routing table.
- C. There is no route for a subnet inside 10.0.0.0/8, so the summary route is not generated.
- D. The summary route is not visible on this router, but it is visible on other OSPF routers in the same area.

Answer: A

NEW QUESTION 62

Refer to the exhibits.



```

On R1:
R1(config)# interface tunnel 1
R1(config-if)# ip address 10.1.1.1 255.255.255.0
R1(config-if)# tunnel source 192.1.1.1
R1(config-if)# tunnel mode gre multipoint
R1(config-if)# ip nhrp network-id 111

On R2:
R2(config)# interface tunnel 1
R2(config-if)# ip address 10.1.1.2 255.255.255.0
R2(config-if)# tunnel source FastEthernet0/0
R2(config-if)# tunnel mode gre multipoint
R2(config-if)# ip nhrp network-id 222
R2(config-if)# ip nhrp nhs 10.1.1.1
R2(config-if)# ip nhrp map 10.1.1.1 192.1.1.1

On R3:
R3(config)# interface tunnel 1
R3(config-if)# ip address 10.1.1.3 255.255.255.0
R3(config-if)# tunnel source FastEthernet0/0
R3(config-if)# tunnel mode gre multipoint
R3(config-if)# ip nhrp network-id 333 R3(config-if)# ip nhrp nhs 10.1.1.1
R3(config-if)# ip nhrp map 10.1.1.1 192.1.1.1

On R4:
R4(config)# interface tunnel 1
R4(config-if)# ip address 10.1.1.4 255.255.255.0
R4(config-if)# tunnel source FastEthernet0/0
R4(config-if)# tunnel mode gre multipoint
R4(config-if)# ip nhrp network-id 444
R4(config-if)# ip nhrp nhs 10.1.1.1
R4(config-if)# ip nhrp map 10.1.1.1 192.1.1.1
  
```

Phase-3 tunnels cannot be established between spoke-to-spoke in DMVPN. Which two commands are missing? (Choose two.)

- A. The ip nhrp redirect command is missing on the spoke routers.
- B. The ip nhrp shortcut command is missing on the spoke routers.
- C. The ip nhrp redirect command is missing on the hub router.
- D. The ip nhrp shortcut command is missing on the hub router.
- E. The ip nhrp map command is missing on the hub router.

Answer: BC

NEW QUESTION 65

Refer to the exhibit.

```
Router#show access-lists
Standard IP access list 1
    10 permit 192.168.2.2 (1 match)
Router#
Router#show route-map
route-map RM-OSPF-DL, permit, sequence 10
  Match clauses:
    ip address (access-lists): 1
  Set clauses:
  Policy routing matches: 0 packets, 0 bytes
Router#
Router#show running-config | section ospf
router ospf 1
  network 192.168.1.1 0.0.0.0 area 0
  network 192.168.12.0 0.0.0.255 area 0
  distribute-list route-map RM-OSPF-DL in
Router#
```

An engineer is trying to block the route to 192.168.2.2 from the routing table by using the configuration that is shown. The route is still present in the routing table as an OSPF route. Which action blocks the route?

- A. Use an extended access list instead of a standard access list.
- B. Change sequence 10 in the route-map command from permit to deny.
- C. Use a prefix list instead of an access list in the route map.
- D. Add this statement to the route map: route-map RM-OSPF-DL deny 20.

Answer: B

NEW QUESTION 68

Refer to the exhibit.

```
TAC+: TCP/IP open to 171.68.118.101/49 failed --
Destination unreachable; gateway or host down
AAA/AUTHEN (2546660185): status = ERROR
AAA/AUTHEN/START (2546660185): Method=LOCAL
AAA/AUTHEN (2546660185): status = FAIL
As1 CHAP: Unable to validate Response. Username chapuser: Authentication failure
```

Why is user authentication being rejected?

- A. The TACACS+ server expects "user", but the NT client sends "domain/user".
- B. The TACACS+ server refuses the user because the user is set up for CHAP.
- C. The TACACS+ server is down, and the user is in the local database.
- D. The TACACS+ server is down, and the user is not in the local database.

Answer: D

NEW QUESTION 70

Refer to the exhibit.

Init	Each router compares the DBD packets that were received from the other router.
2-way	Routers exchange information with other routers in the multiaccess network.
Down	The neighboring router requests the other routers to send missing entries.
Exchange	The network has already elected a DR and a backup BDR.
ExStart	The OSPF router ID of the receiving router was not contained in the hello message.
Loading	No hellos have been received from a neighbor router.

- A. Mastered
B. Not Mastered

Answer: A

Explanation:

Init	Exchange
2-way	2-way
Down	Loading
Exchange	ExStart
ExStart	Init
Loading	Down

NEW QUESTION 74

.....

Thank You for Trying Our Product

* 100% Pass or Money Back

All our products come with a 90-day Money Back Guarantee.

* One year free update

You can enjoy free update one year. 24x7 online support.

* Trusted by Millions

We currently serve more than 30,000,000 customers.

* Shop Securely

All transactions are protected by VeriSign!

100% Pass Your 300-410 Exam with Our Prep Materials Via below:

<https://www.certleader.com/300-410-dumps.html>