

Cisco

Exam Questions 350-601

Implementing and Operating Cisco Data Center Core Technologies



NEW QUESTION 1

Refer to the exhibit

```
#!/bin/bash
### BEGIN INIT INFO
# Provides:          capture
# Required-Start:    $local_fs $network $named $time $syslog
# Required-Stop:     $local_fs $network $named $time $syslog
# Description:       Continuous capture script
### END INIT INFO

start() {
    tcpdump -W 3 -C 100 -i Eth1-42 -w /tmp/capture.pcap &
    RETVAL=$?
}

stop() {
    killall -9 tcpdump
    RETVAL=$?
}

case "$1" in
    start)
        start
        ;;
    stop)
        stop
        ;;
    *)
        echo "Usage: $0 {start|stop}"
        RETVAL=2
esac

exit $RETVAL
```

A network engineer must run a continuous capture on a port A script called "capture" is created to start and stop the capture task Which command sequence makes the capture persistent after a reboot?

- ☐ initctl add capture
initctl init capture
- ☐ chkconfig --add capture
chkconfig --level 3 capture
- ☐ systemctl enable capture
systemctl start capture
- ☐ run bash /etc/init.d/capture
run bash start-stop-daemon

- A. Option A
- B. Option B
- C. Option C
- D. Option D

Answer: C

NEW QUESTION 2

An engineer must configure HSRP protocol on two Cisco Nexus 9000 Series Switches running a virtual port channel. In addition, the HSRP implementation must meet these requirements:

- > It must allow more than 500 groups.
- > switch 1 must act as the primary switch.
- > Both switches must use a user-defined hardware address.

Drag and drop the commands from the right to complete a configuration of the HSRP on the left. The commands are used more than once. Not all commands are used.

<pre>! switch1 interface vlan300 ip 209.165.200.226/27 hsrp 300 </pre>	<input type="text"/>
<pre>ip 209.165.200.225 </pre>	<input type="text"/>
<pre>! switch2 interface vlan300 ip 209.165.200.227/27 hsrp 300 </pre>	<input type="text"/>
<pre>ip 209.165.200.225 </pre>	<input type="text"/>

- A. Mastered
- B. Not Mastered

Answer: A

Explanation:

Switch 1:

Box 1 = hsrp version 2

Box 2 = priority 100

Box 3 = mac-address 6000.6000.6000

Switch 2:

Box 1 = hsrp version 2

Box 2 = priority 255

Box 3 = mac-address 6000.6000.6000

NEW QUESTION 3

An engineer must configure a Cisco UCS domain for monitoring and management by the Cisco Intersight SaaS platform. After the setup is complete, administrators must have full control to configure the device through Cisco UCS Manager and Intersight. Which set of actions accomplishes this task?

- A. Configure Device Connector Access Mode as Allow Control in Device Console Claim the device on Intersight as UCSM Managed Mode.
- B. Configure Device Connector Access Mode as Allow Control in Cisco UCS Manager Claim the device on intersightc as Intersight Managed Mode
- C. Configure Device Connector Access Moao as Allow Control in Device Consol
- D. Claim the device on intersight as Intersight Managed Mode
- E. Configure Device Connector Access Mode as Allow Control in Cisco UCS Manager Claim the device on intersight as UCSM Managed Mode
- F. Option A
- G. Option B
- H. Option C
- I. Option D

Answer: C

NEW QUESTION 4

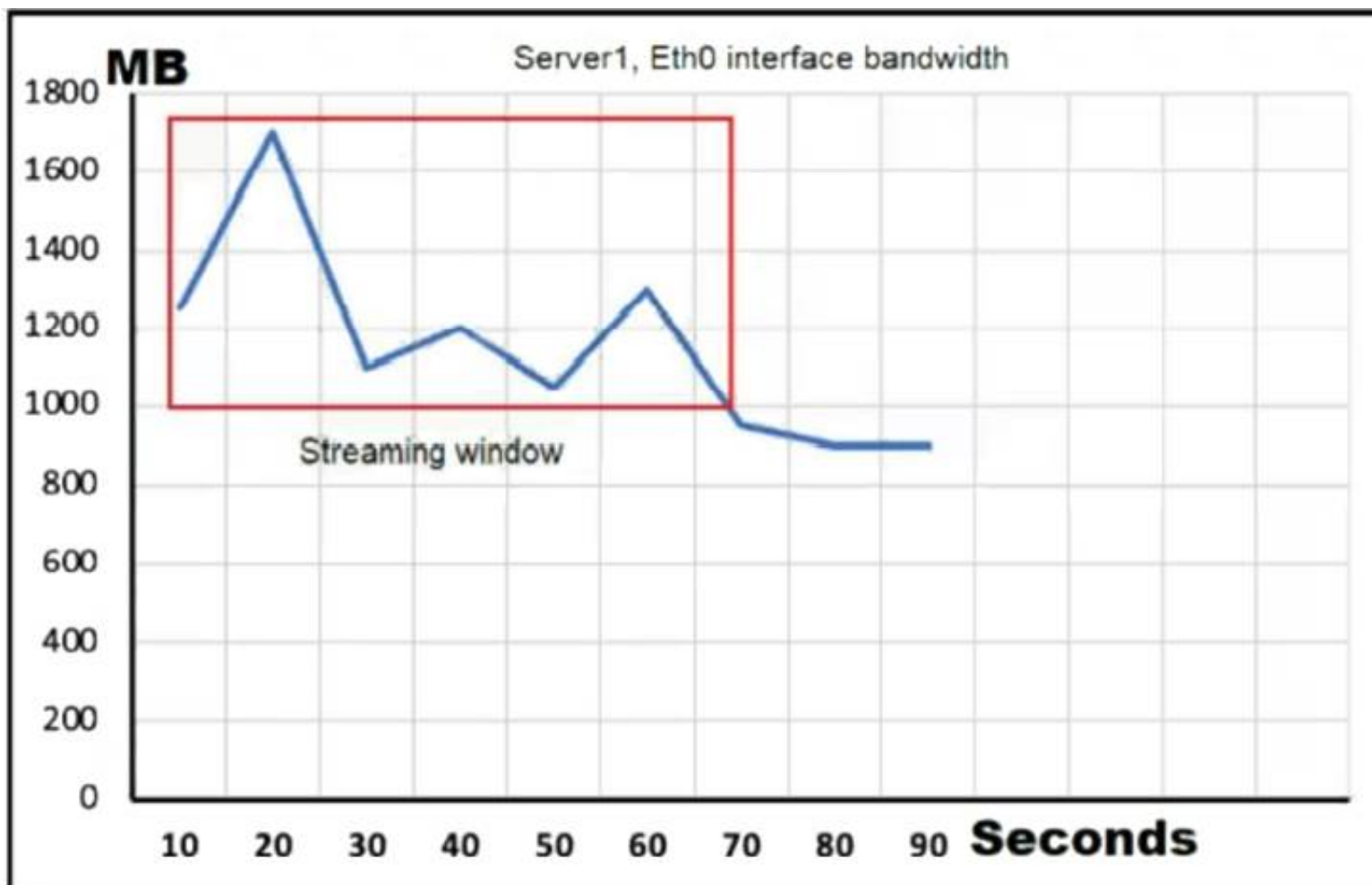
Which solution provides remote and direct file-level access to users and systems?

- A. direct-attached storage
- B. Fibre Channel over Ethernet
- C. storage area network
- D. network-attached storage

Answer: D

NEW QUESTION 5

Refer to the exhibit.



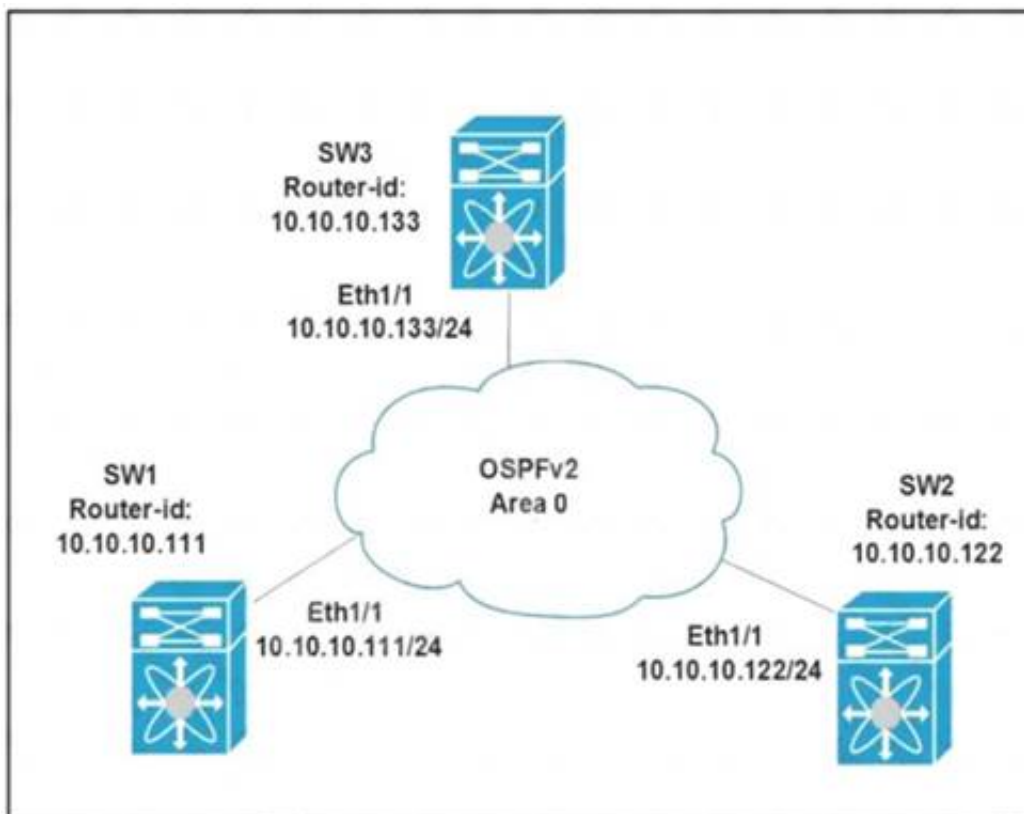
Server1 is connected to a Cisco Nexus 9000 Series Switch via a 1-Gb port channel. The storm control is applied to the Eth0 device with a zero percent value. What does the switch do to traffic that traverses the switch interfaces during the streaming window that exceeds the bandwidth of the interfaces?

- A. forwards all traffic
- B. forwards half of the traffic
- C. suppresses all traffic
- D. drops all of the excess traffic

Answer: B

NEW QUESTION 6

Refer to the exhibit.



All switches are configured with the default OSPF priority. Which configuration should be applied to ensure that the SW2 Cisco Nexus switch controls the LSA floods and advertises the network to the remaining nodes in the OSPFv2 area?

- A. SW2# configure terminal SW2 (config)# interface ethernet 1/1 SW2 (config-if)# ip ospf priority 255
- B. SW2# configure terminal SW2 (config)# interface ethernet 1/1 SW2 (config-if)# ip ospf priority 1
- C. SW2# configure terminal SW2 (config)# router ospf 1 SW2 (config-router)# router-id 10.10.10.22
- D. SW2# configure terminal SW2 (config)# interface ethernet 1/1 SW2 (config-if)# ip ospf priority 0

Answer: A

Explanation:

Priority in OSPF is mainly used to influence/determine a designated router/backup designated router for a network. By default, the priority is 1 on all routers. A router with a high priority will always win the DR/BDR election process.

NEW QUESTION 7

A server engineer wants to control power uses on a Cisco UCS C-series rack server down to the component level. Which two components support specific power

limits? (Choose two.)

- A. memory
- B. graphic card
- C. processor
- D. network controller
- E. storage controller

Answer: AC

NEW QUESTION 8

A network administrator is creating a custom Django self-service portal that runs on a Linux server to automate the creation of new VLANs on Cisco UCS Manager. Which feature must be installed and configured on the server?

- A. Cisco UCS PowerTool Suite
- B. Cisco DNA Center API
- C. Cisco AppDynamics
- D. Cisco UCS Python SDK

Answer: C

NEW QUESTION 9

A new employee must be granted access to add VLANs into an existing Cisco UCS Manager and configure NTP synchronization with date and time zone settings. Which two privileges must be granted to the employee to complete the task? (Choose two.)

- A. Service Profile Compute (ls-compute)
- B. Ext LAN Config (ext-lan-security)
- C. Service Profile Network Policy (ls-network-policy)
- D. Service Profile Config (ls-config)
- E. Ext LAN Policy (ext-lan-policy)

Answer: BE

Explanation:

https://www.cisco.com/c/en/us/td/docs/unified_computing/ucs/ucs-manager/Reference-Docs/Privileges/4-1/b-U

NTP can be configured only with EXT LAN Security. VLAN can be added using the following privileges:

- Ext Lan Config (ext-lan-config)
- Ext Lan Policy (ext-lan-policy)

Service profiles will add VLANs to vNICs only if they are configured to UCS Manager. So service profile is not a valid solution.

NEW QUESTION 10

An engineer is enabling port security on a Cisco MDS 9000 Series Switch. Which feature of enabling port security on a Cisco MDS 9000 Series Switch must be considered?

- A. It always learns about switches that are logging in.
- B. It can be distributed by using Cisco Fabric Services.
- C. It authorizes only the configured sWWN to participate in the fabric.
- D. It binds the fabric at the switch level.

Answer: B

Explanation:

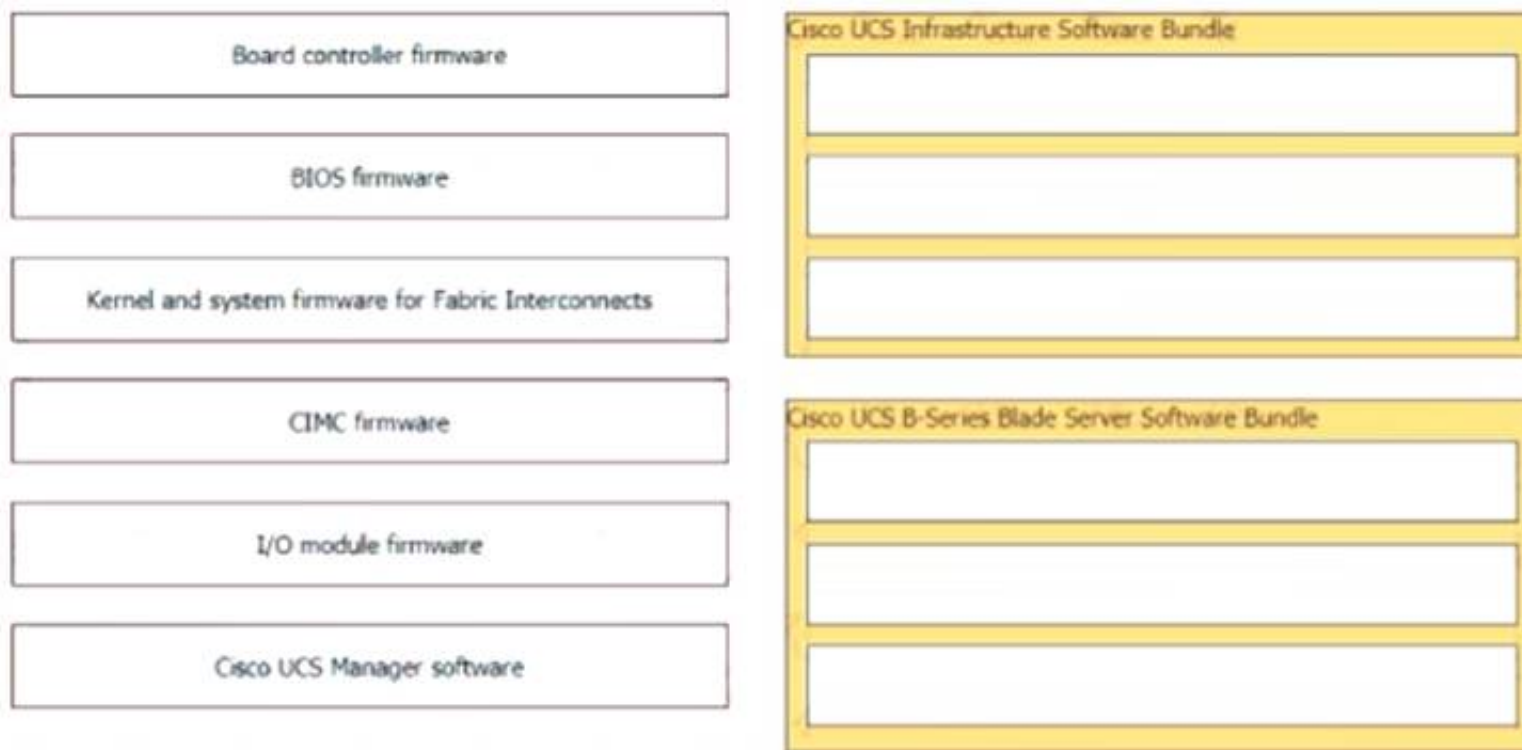
Port Security Configuration Distribution

The port security feature uses the Cisco Fabric Services (CFS) infrastructure to enable efficient database management, provide a single point of configuration for the entire fabric in the VSAN, and enforce the port security policies throughout the fabric.

https://www.cisco.com/c/en/us/td/docs/switches/datacenter/mds9000/sw/6_2/configuration/guides/security/nx-o

NEW QUESTION 10

Drag and drop the firmware packages from the left onto the software bundles they belong to on the right.



- A. Mastered
- B. Not Mastered

Answer: A

Explanation:

Diagram Description automatically generated

NEW QUESTION 13

Which two methods are available to Manage an ACI REST API session authentication when a user is unauthenticated?

- A. POST to aaaLogin
- B. POST to aaaUserLogin
- C. GET aaaRefresh
- D. GET to aaaListDomains
- E. DELETE to aaaLogout

Answer: AC

Explanation:

These API methods enable you to manage session authentication:

aaaLogin —Sent as a POST message, this method logs in a user and opens a session. The message body contains an aaa:User object with the name and password attributes, and the response contains a session token and cookie. If multiple AAA login domains are configured, you must prepend the user's name with apic: domain\\ .

aaaRefresh —Sent as a GET message with no message body or as a POST message with the aaaLogin message body, this method resets the session timer. The response contains a new session token and cookie.

aaaLogout —Sent as a POST message, this method logs out the user and closes the session. The message body contains an aaa:User object with the name attribute. The response contains an empty data structure.

aaaListDomains —Sent as a GET message, this method returns a list of valid AAA login domains. You can send this message without logging in.

https://www.cisco.com/c/en/us/td/docs/switches/datacenter/aci/apic/sw/2-x/rest_cfg/2_1_x/b_Cisco_APIC_REST_API_Configuration_Guide/b_Cisco_APIC_REST_API_Configuration_Guide_chapter_01.html

NEW QUESTION 18

Which statement about the MAC address that the FCoE Initialization Protocol chooses for use by an E-Node in an FCoE implementation is true?

- A. The FCoE Initialization Protocol uses the burned-in MAC address of the converged network adapter for all FCoE operations.
- B. The FCoE Initialization protocol uses a 24-bit FC-MAP and concatenates a 24-bit Fibre Channel ID to create a fabric-provided MAC address.
- C. The FCoE Initialization Protocol uses 01.00.0C as the first 24 bits of the MAC address and appends a 24-bit Fibre Channel ID to derive a full 48-bit FCoE MAC address.
- D. FCoE does not use a MAC address
- E. The FCoE Initialization Protocol is used to acquire a Fibre Channel ID, and the address is used for all FCoE communications in the same way as Fibre Channel Protocol.

Answer: B

Explanation:

https://www.cisco.com/c/en/us/td/docs/solutions/Enterprise/Data_Center/UF_FCoE_final.html#wp1154912

NEW QUESTION 20

Which two configuration settings are available in the Cisco UCS Firmware Auto Sync Server policy? (Choose two.)

- A. Immediate Action
- B. User Acknowledge
- C. No Action
- D. Delayed Action

E. User Notification

Answer: BC

NEW QUESTION 25

A storage array must be connected to port ethernet1/10 on a Cisco MDS 9000 Series Switch. In addition, the array must connect using the FCoE protocol and be single-homed. Which configuration meets these requirements?

- ☒ **vlan database**
vlan 101 fcoe
vsan 101 enable
interface vfc 10 vsan 101
- ☐ **interface vfc 10**
switchport mode fcoe
switchport access vlan 101
bind interface ethernet1/10
- ☐ **vlan database**
vlan 101 vsan
vsan 101 fcoe
vsan 101 interface vfc 10
- ☐ **interface ethernet1/10**
switchport mode trunk
bind interface vfc 10
fcoe vsan 101
- ☐ **vsan database**
vlan 101
vsan 101
fcoe vsan 101 interface vfc 10
- ☐ **interface 1/10**
switchport mode e
fcoe vfc 10
- ☐ **interface vfc 10**
switchport mode f
bind interface ethernet 1/10
- ☐ **vsan database**
vsan 101
vlan 101
fcoe vsan 101
vsan 101 interface vfc 10

- A. Option A
- B. Option B
- C. Option C
- D. Option D

Answer: D

NEW QUESTION 30

A network engineer is deploying a Cisco ALL-flash Hyperflex solution. Which local storage configuration is required for the operating system and persistent logging?

- A. Two solid state drives
- B. Two SATA drives
- C. One SATA drive
- D. One solid state drive

Answer: D

NEW QUESTION 32

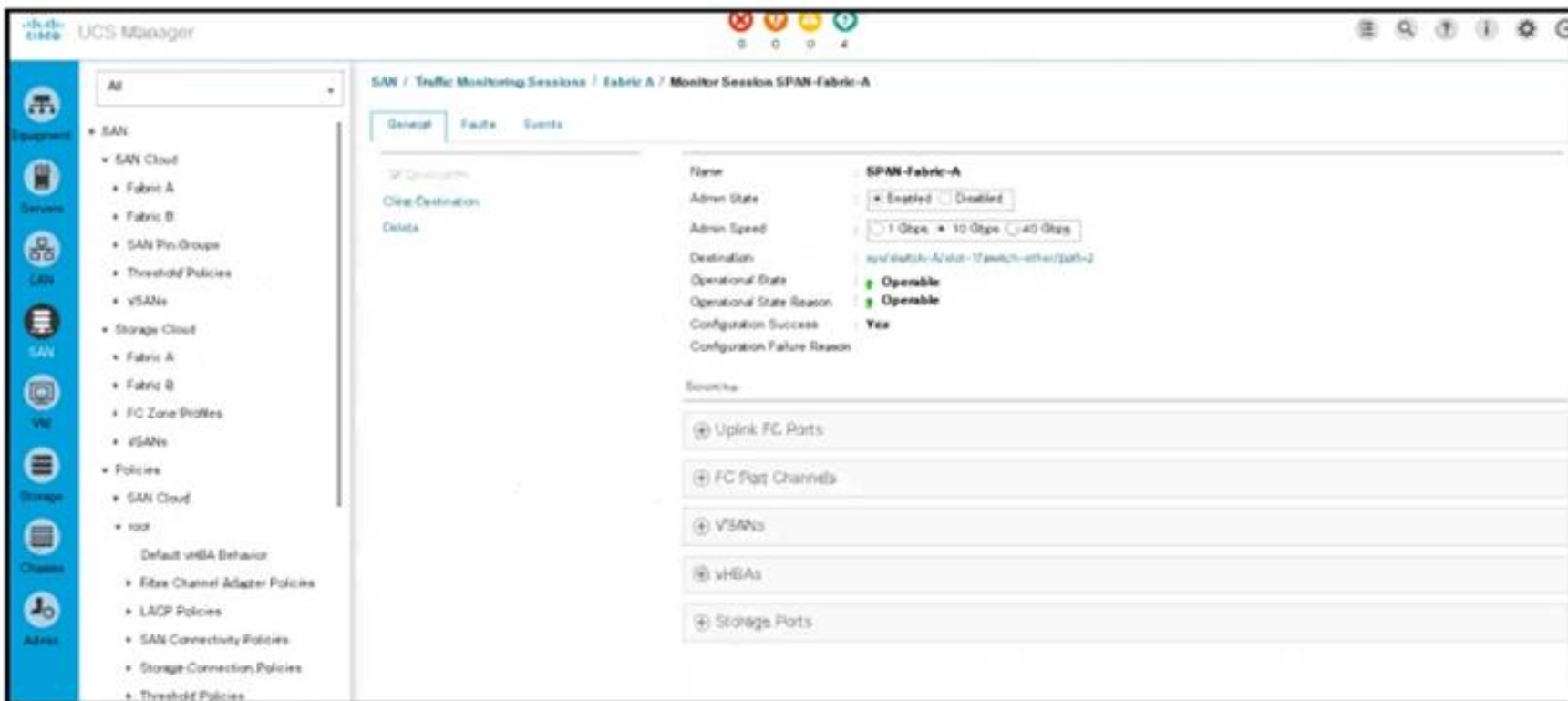
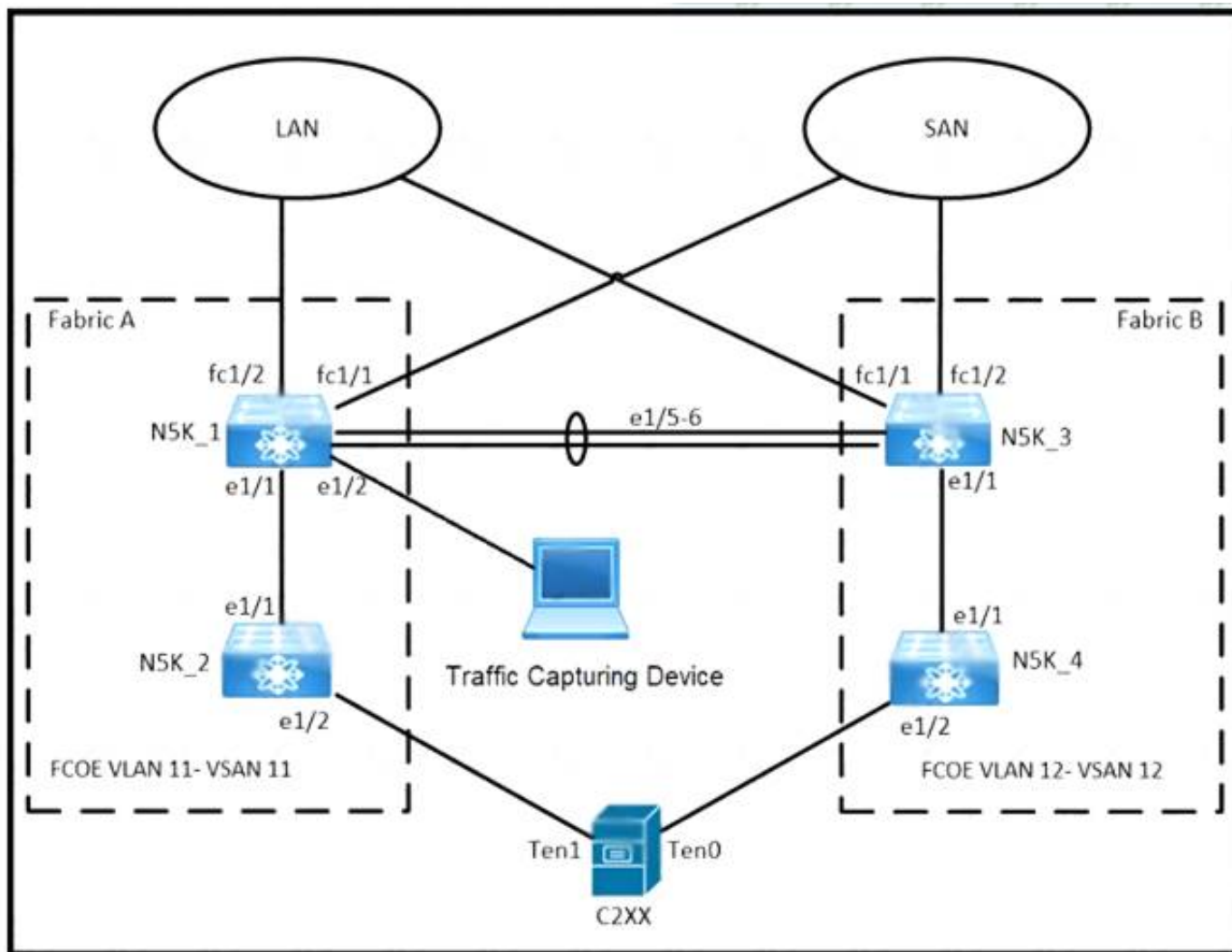
Which component is upgraded by using an EPLD upgrade on a Cisco Nexus 9000 Series Switch?

- A. dual-homed fabric extenders
- B. BIOS
- C. field-programmable gate arrays
- D. ISSU of the NX-OS version

Answer: C

NEW QUESTION 37

Refer to the exhibits



An engineer must implement a SPAN session that sends a copy of all VLAN 11 traffic on N5K_1 to the Traffic Capturing Device. The configuration that is presented is already applied to the Cisco UCS Manager. Which additional action meets the objective?

- A. Assign the VLAN to the monitored port.
- B. Choose VLAN 11 under the VSANs section.
- C. Select the Clear Destination feature.
- D. Create a LAN traffic monitoring session.

Answer: B

NEW QUESTION 41

What is required for using puppet in a Cisco NX-OS environment?

- A. Open Agent Container
- B. XML management interface
- C. NX-API
- D. OpenNP

Answer: A

NEW QUESTION 44

An engineer must implement a disaster recovery policy for the Cisco UCS infrastructure. The solution must meet these criteria:

- The Recovery Point Objective must be 48 hours.
- The backup must use encrypted transmission.
- The Recovery Time Objective must be 4 hours.

Which configuration set must be used in the scheduled backup to meet these requirements?

☒ Protocol: SFTP
Schedule: Weekly

☐ Protocol: FTP
Schedule: Bi-Weekly

☐ Protocol: TFTP
Schedule: Bi-Weekly

☐ Protocol: SCP
Schedule: Daily

- A. Option A
- B. Option B
- C. Option C
- D. Option D

Answer: D

NEW QUESTION 47

What happens to the default host firmware policy after a Cisco UCS Manager upgrade?

- A. It is updated to contain the firmware entries of all the components
- B. It is replaced by a new default policy without any firmware entries.
- C. It is assigned to all the service profiles that include a host firmware policy.
- D. It is set to match the host firmware policy.

Answer: B

Explanation:

https://www.cisco.com/c/en/us/td/docs/unified_computing/ucs/ucs-manager/GUI-User-Guides/Firmware-Mgmt/

NEW QUESTION 49

A network administrator attempts to automate the provisioning of several new Cisco Nexus switches. The administrator prepares a bootstrap configuration script for the task Due to the number of switches a zero-touch provisioning solution is preferred Additionally, some switches arrive with outdated software and should be automatically upgraded as part of the provisioning workflow Which solution meets the requirements'

- A. DHCP
- B. Ansible
- C. NX-API
- D. POAP

Answer: C

NEW QUESTION 50

Which two protocols are used by the NFSv4 protocol? (Choose two.)

- A. FCP
- B. TCP
- C. UDP
- D. Ethernet
- E. IP

Answer: BE

NEW QUESTION 53

Which data structure results from running this Python code?

```
>>> import json
>>> f = open('fname.json', 'r')
>>> var1 = json.load(f)
>>> var1
{'bd': 'bd1', 'ap': {'epgs': [{'name': 'app'}, {'name': 'web'}, {'name': 'db'}], 'name': 'OnlineStore'}, 'name': '39233259', 'pvn': 'pvn1'}
```

- A. tuple
- B. dictionary
- C. set
- D. list

Answer: B

NEW QUESTION 56

An engineer must configure RBAC in Cisco UCS Manager in an existing data center environment. Which two roles can be used to configure LAN Connectivity policies? (Choose two.)

- A. network-admin
- B. server-profile
- C. admin
- D. enable
- E. operations

Answer: AC

Explanation:

https://www.cisco.com/c/en/us/td/docs/unified_computing/ucs/sw/gui/config/guide/1-4/UCSM_GUI_Configuration_Guide_1_4_chapter9.html
https://www.cisco.com/c/en/us/td/docs/unified_computing/ucs/ucsm_privileges/3-2/UCSM-Privileges-3_2/UCSM-Privileges-3_2_chapter_01.html

NEW QUESTION 59

An engineer needs to create a new user in the local user database on Cisco UCS Fabric Interconnect. The user needs permissions to change the following configuration inside UCS Manager version 3.1:

- vNIC and vHBA profiles
- Fan speed and power redundancy profile of UCS Manager

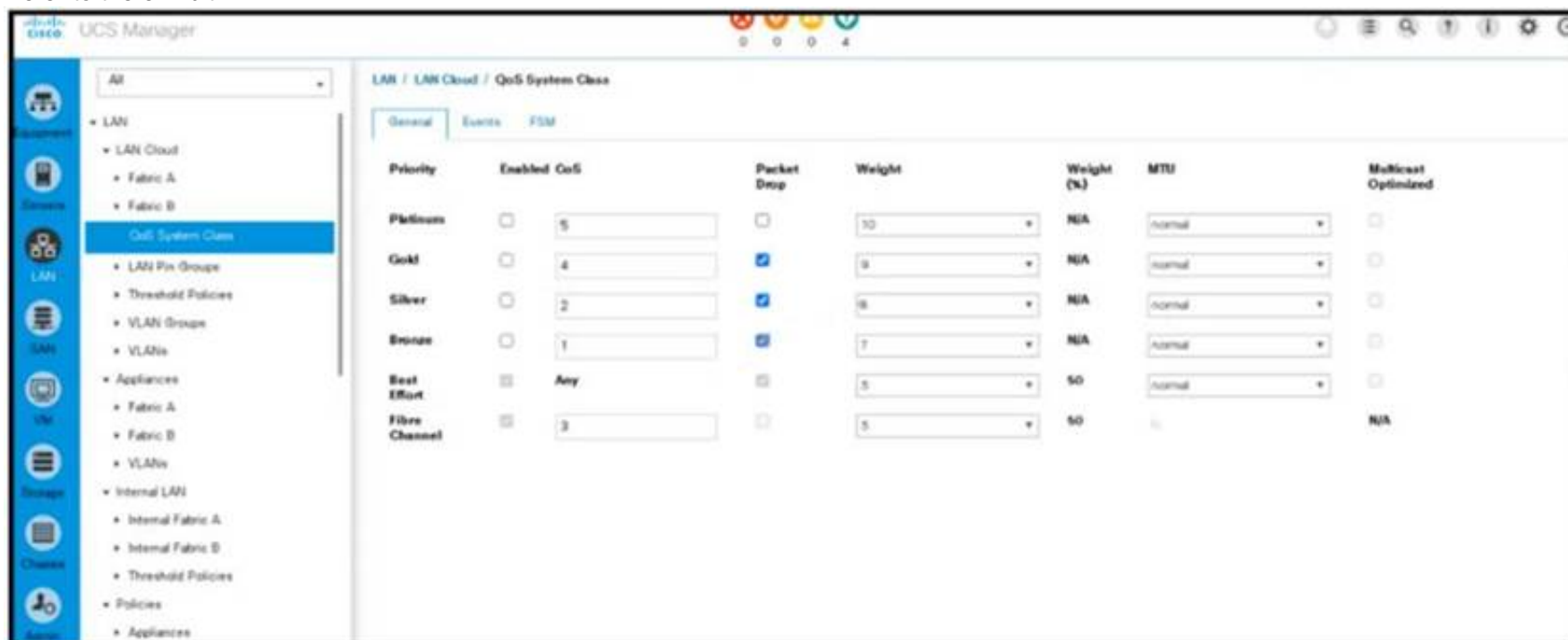
Which two roles must be assigned to a user to achieve this goal? (Choose two.)

- A. server-compute
- B. facility-manager
- C. operations
- D. server-equipment
- E. server-profile

Answer: AD

NEW QUESTION 64

Refer to the exhibit.



Priority	Enabled CoS	Packet Drop	Weight	Weight (%)	MTU	Multicast Optimized
Platinum	<input type="checkbox"/> 5	<input type="checkbox"/>	10	N/A	normal	<input type="checkbox"/>
Gold	<input type="checkbox"/> 4	<input checked="" type="checkbox"/>	9	N/A	normal	<input type="checkbox"/>
Silver	<input type="checkbox"/> 2	<input checked="" type="checkbox"/>	8	N/A	normal	<input type="checkbox"/>
Bronze	<input type="checkbox"/> 1	<input checked="" type="checkbox"/>	7	N/A	normal	<input type="checkbox"/>
Best Effort	<input checked="" type="checkbox"/> Any	<input type="checkbox"/>	5	50	normal	<input type="checkbox"/>
Fibre Channel	<input checked="" type="checkbox"/> 3	<input type="checkbox"/>	5	50		N/A

An engineer must configure a QoS policy that controls only vHBA traffic. Which policy must be used to meet this requirement?

- A. Best Effort
- B. Fibre Channel
- C. Gold
- D. Platinum

Answer: B

NEW QUESTION 68

Which two actions must be taken to directly connect a Fibre Channel storage array to a Cisco UCS domain? (Choose two.)

- A. Configure a new VSAN
- B. Create a new vHBA dedicated to the storage array
- C. Configure a Fibre Channel port channel
- D. Create a Storage Connection Policy
- E. Configure the Fibre Channel poet as a Fibre Channel storage port

Answer: AE

NEW QUESTION 71

What is a benefit of Cisco HyperFlex All-Flash Stretched cluster deployment as compared to All-HDD Stretched cluster deployment?

- A. lower cost
- B. lower number of IOPS
- C. higher cost

D. higher number of IOPS

Answer: D

NEW QUESTION 72

Refer to Exhibit:

```
n9k2# guestshell
[guestshell@guestshell ~]$ python
Python 2.7.5 (default, Jun 17 2014, 18:11:42)
[GCC 4.8.2 20140120 (Red Hat 4.8.2-16)] on linux2
Type "help", "copyright", "credits" or "license" for more information.
>>>
```

An engineer must use the python module in the guest shell of the Cisco Nexus 9000 Series switch to shutdown port Ethernet 1/4 Which command set will accomplish this?

- ☐ from cli import *
cli("conf t")
cli("interface eth1/4")
cli("shutdown")
- ☐ from cli import *
cli("conf t ; interface eth1/4 ; shut")
- ☐ from cisco import cli
cli("conf t ; interface eth1/4")
cli("shutdown")
- ☐ from cisco import cli
cli("conf t" ; "interface eth1/4" ; "shut")

- A. Option A
- B. Option B
- C. Option C
- D. Option D

Answer: B

Explanation:

When two or more commands are run individually, the state is not persistent from one command to subsequent commands.


In the following example, the second command fails because the state from the first command does not persist for the second command.

```
>>> cli("conf t")
>>> cli("interface eth4/1")
```

When two or more commands are run together, the state is persistent from one command to subsequent commands.

In the following example, the second command is successful because the state persists for the second and third commands.

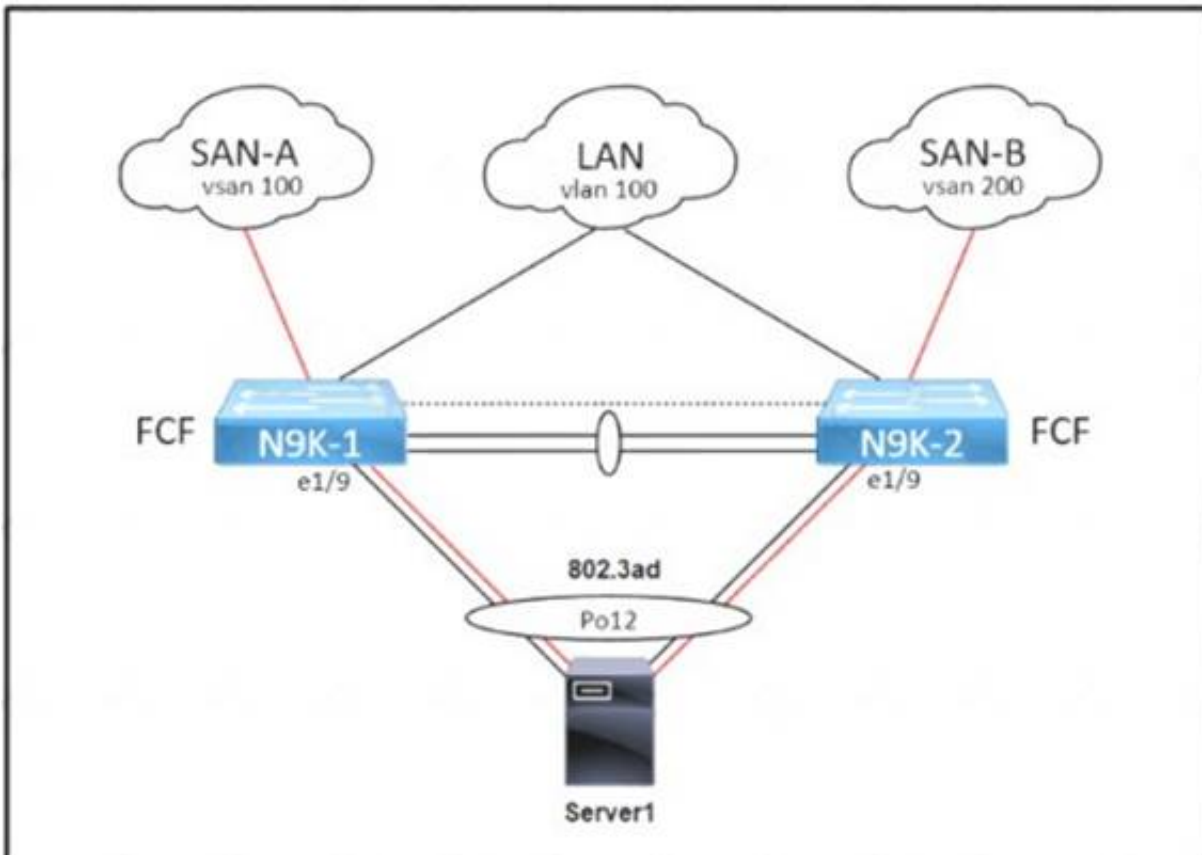
```
>>> cli("conf t ; interface eth4/1 ; shut")
```

 **Note** Commands are separated with " ; " as shown in the example. The semicolon (;) must be surrounded with single blank characters.

https://www.cisco.com/c/en/us/td/docs/switches/datacenter/nexus9000/sw/7-x/programmability/guide/b_Cisco_Nexus_9000_Series_NX-OS_Programmability_Guide_7x/Python_API.html <https://www.ciscolive.com/c/dam/r/ciscolive/apjc/docs/2016/pdf/DEVNET-1077.pdf>

NEW QUESTION 73

Refer to the exhibit.



An administrator must complete the unified fabric configuration between Server1 and a pair of Cisco Nexus 9000 Series Switches Drag and drop the code snippets from the right onto the blanks in the code on the left to complete the N9K-1 configuration Snippets are used more than once.

```

service-policy type qos input default-fcoe-in-policy
int [ ]
  switchport trunk allowed [ ] 1, 100
int [ ]
  bind interface [ ]
  no shut
        
```

vlan

vfc 1

po12

- A. Mastered
- B. Not Mastered

Answer: A

Explanation:

Po12
Vlan Vfc1 Po12

NEW QUESTION 74

An engineer must send JSON encoded telemetry data to an external collector. The transport mechanism must prevent tampering or forgery of the data. Which protocol accomplishes this goal?

- A. GPB
- B. HTTP
- C. gRPC
- D. DTLS

Answer: B

NEW QUESTION 78

In an FCoE environment, for which two sets of data must an interface that implements the PAUSE mechanism always provision sufficient ingress buffer? (Choose two)

- A. frames that were sent with high credit
- B. frames that were processed and transmitted by the transmitter before the PAUSE frame left the sender
- C. frames that were sent on the link but not yet received.
- D. frames that were sent on the link and received.
- E. frames that were processed and transmitted by the transmitter after the PAUSE frame left the sender.

Answer: BC

Explanation:

https://www.cisco.com/c/en/us/td/docs/switches/datacenter/nexus7000/sw/fcoe/config/cisco_nexus7000_fcoe_config_guide_8x/configuring_fcoe.html

NEW QUESTION 83

An engineer upgrades the bash on the Cisco Nexus 9000 Series Switch.


```
guestshell:~$ sudo [MISSING_COMMAND] /bootflash/bash-4.2_8642092948678a-r8x86_64.rpm.rpm
Preparing...
##### [100%]
1:bash ##### [100%]
update-alternatives: Linking //bin/sh to /bin/bash
```

Which command must be used to complete the task?

- A. rpm -qa
- B. rpm -Uhv
- C. upgrade -U
- D. update -vh

Answer: B

NEW QUESTION 88

Where is the witness deployed in a two-node Cisco HyperFlex Edge deployment?

- A. to the HyperFlex Edge two-node cluster
- B. to an additional server with network access to HyperFlex Edge
- C. to a third-party cloud provider
- D. to Cisco Intersight

Answer: D

Explanation:

The Cisco HyperFlex Edge invisible cloud witness is only required for 2-node HX Edge deployments. correct, it has to connect to Intersight as it is a CLOUD invisible witness as per the document shared: The Cisco HyperFlexEdge invisiblecloud witness is only required for 2-node HX Edge deployments. The witness does not require any additional infrastructure, setup, configuration, backup, patching, or management of any kind. This feature is automatically configured as part of a 2-node Hyper Flex Edge installation. Outbound access at the remote site must be present for connectivity to Intersight (either Intersight.com or to the Intersight Virtual Appliance). HyperFlexEdge 2-node clusters cannot operate without this connectivity in place https://www.cisco.com/c/en/us/td/docs/hyperconverged_systems/HyperFlex_HX_DataPlatformSoftware/Edge_Deployment_Guide/b_HyperFlex_Edge_Deployment_Guide_4_0.pdf

NEW QUESTION 93

An engineer needs to install a new package on a Cisco Nexus 9000 Series Switch. What is the impact of running the install commit <filename> command on the switch?

- A. The switch is restarted after the upgrade is complete
- B. The package is used after the switch is restarted.
- C. The previous package that was in use is deleted from bootflash.
- D. The package is used in the running configuration.

Answer: B

NEW QUESTION 95

Refer to the exhibit.

```
switch(config)# interface Ethernet 2/2
switch(config)# ip address 172.23.231.240/23
switch(config)# ip verify unicast source reachable-via rx
```

What is configured as a result of running these commands?

- A. reverse lookup for outbound packets
- B. strict unicast RPF
- C. loose unicast RPF
- D. IP Source Guard

Answer: B

Explanation:

https://tools.cisco.com/security/center/resources/unicast_reverse_path_forwarding

The ip verify unicast source reachable-via rx command enables Unicast RPF in strict mode. To enable loose mode, administrators can use the any option to enforce the requirement that the source IP address for a packet must appear in the routing table.

NEW QUESTION 99

Refer to the exhibit.


```
CISCO-UCS-A# scope org /
CISCO-UCS-A /org* # create service-profile Cisc01 instance
CISCO-UCS-A /org/service-profile* # set bios-policy bios1
CISCO-UCS-A /org/service-profile* # set boot-policy boot1
CISCO-UCS-A /org/service-profile* # set ext-mgmt-ip-state none
CISCO-UCS-A /org/service-profile* # set host-fw-policy ipmi-user987
CISCO-UCS-A /org/service-profile* # set identity dynamic-uuid derived
CISCO-UCS-A /org/service-profile* # set ipmi-access-profile ipmi1
CISCO-UCS-A /org/service-profile* # set local-disk-policy local1
CISCO-UCS-A /org/service-profile* # set maint-policy maint1
CISCO-UCS-A /org/service-profile* # set mgmt-fw-policy mgmt1
CISCO-UCS-A /org/service-profile* # set power-control-policy power1
CISCO-UCS-A /org/service-profile* # set scrub-policy scrub1
CISCO-UCS-A /org/service-profile* # set sol-policy sol1
CISCO-UCS-A /org/service-profile* # set stats-policy stats1
CISCO-UCS-A /org/service-profile* # set user-label Cisco
CISCO-UCS-A /org/service-profile* # vcon-policy vconnpolicy
CISCO-UCS-A /org/service-profile* # commit-buffer
CISCO-UCS-A /org/service-profile #
```

What is a characteristic presented in the service profile of the UUID?

- A. based on the hardware
- B. vendor assigned
- C. unique system generated
- D. allocated from a UUID pool

Answer: A

Explanation:

there is no parameter for 'set identity dynamic-uuid' to specify a pool name - you can only state "derived" or a 32 hex character string (128-bits, therefore full UUID).

ucspe /org/service-profile # set identity dynamic-uuid derived Derived
FFFFFFFF-FFFF-FFFF-FFFF-FFFFFFFFFFFFFF Dynamic UUID

The documentation, as usual for Cisco, is poor. Shagua references old v1.4.1 documentation but it's the same in 4.1. It's inaccurate as uuid-pool should now read uuid-suffix-pool. You can use UCSPE to check the CLI with contextual help.

ucspe /org/service-profile # set identity dynamic-uuid Dynamic UUID dynamic-wwnn Dynamic WWNN uuid-suffix-pool UUID Suffix Pool wwnn-pool WWNN Pool
If set identity dynamic-uuid only gives us the option of a static UUID or the parameter "derived", and set identity uuid-suffix-pool is the option to assign a pool... I would suggest that the most logical answer here is

- derived from the hardware. https://www.cisco.com/en/US/docs/unified_computing/ucs/sw/cli/config/guide/1.4.1/CLI_Config_Guide_1_4_1

NEW QUESTION 100

An engineer must configure a Cisco MDS 9000 Series Switch for traffic analysis from the storage array. The storage array is connected to the interface fc2/1 in VSAN 10 and the traffic analyzer to fc4/2. The capture file must include ingress and egress traffic between the switch and the storage array. Also, only traffic in VSAN 10 must be captured. Which configuration set meets these requirements?

A)

```
interface fc4/2
  switchport mode auto
  no shutdown
!
span session 1
  source interface fc2/1 rx
  destination interface fc4/2
  source filter vsan 10
  no suspend
```

B)

```
interface fc4/2
  switchport mode trunk
  switchport trunk allow vsan 10
  no shutdown
!
span session 1
  source interface fc2/1 tx
  destination interface fc4/2 rx
  no suspend
```

C)

```
interface fc4/2
  switchport mode SD
  no shutdown
!
span session 1
  source interface fc2/1
  destination interface fc4/2
  source filter vsan 10
```

D)

```
interface fc4/2
  switchport mode ST
  no shutdown
!
span session 1
  source interface fc2/1
  destination interface fc4/2
  source filter vsan 10
```

- A. Option A
- B. Option B
- C. Option C
- D. Option D

Answer: A

NEW QUESTION 102

An engineer is duplicating an existing Cisco UCS setup at a new site. What are two characteristics of a logical configuration backup of a Cisco UCS Manager database? (Choose two.)

- A. contains the AAA and RBAC configurations
- B. contains a file with an extension.tgz that stores all of the configurations
- C. contains the configuration organizations and locales
- D. contains all of the configurations
- E. contains the VLAN and VSAN configurations

Answer: CE

Explanation:

Logical configuration—An XML file that includes all logical configuration settings such as service profiles, VLANs, VSANs, pools, and policies. You can use the file generated from this backup to import these configuration settings to the original fabric interconnect or to a different fabric interconnect. You cannot use this file for a system restore.

NEW QUESTION 107

Which two actions are needed to configure a single Cisco APIC controller for Cisco ACI fabric for the first time? (Choose two.)

- A. Register the APIC that is connected to the switch.
- B. Configure the first Cisco APIC controller
- C. Configure the leaf switch where the Cisco APIC is connected, using CLI to allow APIC connectivity
- D. Register the switches that are discovered through LLDP.
- E. Register all leaf and spine switches

Answer: AE

NEW QUESTION 109

What is an advantage of NAS compared to SAN?

- A. It offers enhanced NFS features.
- B. It offers enhanced security features
- C. It functions in an existing IP environment.
- D. It provides lossless throughput.

Answer: C

NEW QUESTION 111

An engineer must configure SAN connectivity in Cisco UCS manager. The requirement is to specify the WWPN of the storage array and set the zoning type to single initiator multiple targets. The engineer must also configure interrupt handling and queues of the vHBA interface. Which two Cisco UCS policies should be used to configure the settings? (Choose two.)

- A. storage connection policy
- B. SAN connectivity policy
- C. vHBA policy
- D. Fibre Channel adaptor policy
- E. boot policy

Answer: AD

NEW QUESTION 112

An engineer must build a lab replica of a Cisco UCS production environment. The file must be imported into a new Cisco UCS cluster using a Cisco UCS manager GUI. The file must be in XML format and be exported from Cisco UCS Manager using encrypted method. Which two configuration parameters should be selected to meet these requirements?. (Choose two.)

- A. Type: Logical configuration
- B. Protocol SCP
- C. Type Full state
- D. Protocol TFTP
- E. Type All configuration

Answer: BE

NEW QUESTION 114

A network engineer must prevent data corruption due to cross fabric communication in an FCoE environment. Which configuration must be applied to the Cisco Nexus Unified Switches to achieve this objective?

- A. Switch(config)#fcoe fcmmap 0e,fc,2a
- B. Switch(config-if)# no fcoe fcf-priority 0
- C. Switch(config-if) # shutdown lan
- D. Switch(config) # no fcoe fcf-priority

Answer: A

Explanation:



2. switch(config)# fcoe fcmmap fabric-map

3. (Optional) switch(config)# no fcoe fcmmap fabric-map

DETAILED STEPS

Step	Command or Action	Purpose
Step 1	switch# configure terminal	Enters configuration mode.
Step 2	switch(config)# fcoe fcmmap fabric-map	Configures the global FC-Map. The default value is 0E.FC.00. The range is from 0E.FC.00 to 0E.FC.FF.
Step 3	switch(config)# no fcoe fcmmap fabric-map	(Optional) Resets the global FC-Map to the default value of 0E.FC.00.

This example shows how to configure the global FC-Map:

```
switch# configure terminal
switch(config)# fcoe fcmmap 0e.fc.2a
```

https://www.cisco.com/c/en/us/td/docs/switches/datacenter/nexus5000/sw/fcoe/b_Cisco_Nexus_5000_Series_NX-OS_Fibre_Channel_over_Ethernet_Configuration_Guide/Cisco_Nexus_5000_Series_NX-OS_Fibre_Channel_over_Ethernet_Configuration_Guide_chapter3.html
You can prevent data corruption due to cross-fabric talk by configuring an FC-Map that identifies the Fibre Channel fabric for this Cisco Nexus device. When the FC-Map is configured, the switch discards the MAC addresses that are not part of the current fabric.
switch(config)# fcoe fcmmap fabric-map Configures the global FC-Map. The default value is 0E.FC.00. The range is from 0E.FC.00 to 0E.FC.FF.
https://www.cisco.com/c/en/us/td/docs/switches/datacenter/nexus5000/sw/fcoe/513_n1_1/b_Cisco_n5k_fcoe_co

NEW QUESTION 118

A customer deploys a media server to distribute streaming videos to network clients. The requirement is to allow the video feed to reach only requesting clients. The shared trees must not propagate the video feed if no clients from that tree request it. To reduce configuration touchpoints, the solution must support the automatic discovery and announcement of RP-set information. Each router in the network is responsible for selecting the RP. Which configuration set meets these requirements?

A)

```
router(config-if)# ip pim bidir-enable
router(config)# ip pim ssm default
router(config)# ip igmp version 3
```

B)


```
router(config-if)# ip pim dense-mode
router(config)# ip pim rp-address 1.1.1.1
router(config)# ip pim rp listener
```

C)

```
router(config-if)# ip pim sparse mode
router(config)# ip pim bsr-candidate Lo0
router(config)# ip pim rp-candidate Lo0
```

D)

```
router(config-if)# ip pim sparse-sense mode  
router(config)# ip pim auto-rp  
router(config)# ip pim send-rp-announce
```

- A. Option A
B. Option B
C. Option C
D. Option D

Answer: D

NEW QUESTION 121

An engineer must implement a VXLAN-based data center interconnect. The long-distance transport provided by a service provider is IP-based, supports a maximum MTU of 1554 bytes, and does not support outbound traffic replication. Which action must be taken to build the data center interconnect?

- A. Configure a route map to associate the IPs of the remote VTEPs.
- B. Create an IP access list and associate it with VNI to replicate traffic to remote VTEPs.
- C. Announce host reachability over BGP.
- D. Implement BGP EVPN ingress replication.

Answer: D

NEW QUESTION 126

Refer to the exhibit.

```
N5K-1(config)#interface fc2/3
N5K-1(config-if)#switchport mode sd
N5K-1(config-if)# no shutdown
```

What is the result of implementing this configuration?

- A. The Fibre Channel interface is configured for synchronization distribution.
- B. The Fibre Channel interface is configured for SPAN.
- C. The Fibre Channel interface is configuration for source distribution.
- D. The Fibre Channel interface is configured for FSPF.

Answer: B

Explanation:

https://www.cisco.com/c/en/us/td/docs/switches/datacenter/nexus5000/sw/san_switching/421_n1_1/b_Cisco_n5k_nxos_sanswitching_config_guide_rel421_n1_1/Cisco_n5k_nxos_sanswitching_config_guide_rel4

https://www.cisco.com/en/US/docs/switches/datacenter/nexus5000/sw/configuration/guide/cli_rel_4_1/Cisco_Nexus_5000_Series_Switch_CLI_Software_Configuration_Guide_chapter50.html

NEW QUESTION 127

An engineer must implement an automation solution to allow the backup of the configuration of cisco Nexus series switches to a centralized location. The solution must:

- * Support the team-developed custom monitoring scripts that are packaged using RPM packaging that the framework must support.
- * Be developed from the underlying cisco Nexus operating system.
- * Have no impact on the operating system of the underlying switch if the resource contention occurs.
- * Use Python to expand the existing automation framework. Which solution meets these requirements?

- A. Guest Shell
B. Bash Shell
C. TCL Shell
D. Vegas Shell

Answer: A

NEW QUESTION 132

Which two firmware packages are included in the Cisco UCS C-Series Rack-Mount UCS-Managed Server Software bundle? (Choose two.)

- A. system
- B. third-party
- C. PSU
- D. CIMC
- E. BIOS

Answer: DE

Explanation:

https://www.cisco.com/c/en/us/td/docs/unified_computing/ucs/ucs-manager/GUI-User-Guides/Firmware-Mgmt/

Cisco UCS C-Series Rack-Mount UCS-Managed Server Software Bundle

This bundle includes the following firmware images that are required to update components on rack-mount servers that have been integrated with and are managed by Cisco UCS Manager:

- CIMC firmware
- BIOS firmware
- Adapter firmware
- Storage controller firmware

NEW QUESTION 133

Due to a major version change, an engineer must perform a software upgrade on a Cisco Nexus Series switch. Which two technologies can be implemented to reduce disruptions to the network during the upgrade? (Choose two.)

- A. MLAG
- B. HSRP
- C. PAgP
- D. VDC
- E. vPC

Answer: BE

NEW QUESTION 138

A network administrator is using the Cisco ESA with Cisco AMP to upload files to the cloud for analysis. The network is congested and is affecting communication. How will the Cisco ESA handle any files which need analysis?

- A. Cisco AMP calculates the SHA-256 fingerprint, caches it, and periodically attempts the upload.
- B. The Cisco ESA immediately makes another attempt to upload the file.
- C. The file is queued for upload when connectivity is restored.
- D. The file upload is abandoned.

Answer: A

NEW QUESTION 143

An engineer is implementing traffic monitoring for a server vNIC that is configured with fabric failover enabled. The requirement is for the traffic to be sent to an analyzer, even during a failure of one of the fabric interconnects. The analyzer is connected to unconfigured Ethernet ports on both fabric interconnects. Which configuration accomplishes this task?

- A. Create two traffic monitoring sessions with different names, one per fabric. Connect the analyzer connected to FI-B as the destination for both monitoring sessions.
- B. Create two traffic monitoring sessions with the same name, one per fabric. Connect an analyzer on each FI as the destination for the monitoring session local to that FI.
- C. Create two traffic monitoring sessions with the same name, one per fabric. Connect the analyzer connected to FI-A as the destination for both monitoring sessions.
- D. Create two traffic monitoring sessions with different names, one per fabric. Connect an analyzer on each FI as the destination for the monitoring session local to the FI

Answer: A

NEW QUESTION 147

A customer requires a solution to orchestrate the configuration of storage arrays, firewalls, and Cisco ACI networking. Additionally, the orchestration product must support open automation and a service catalog. Which solution meets these requirements?

- A. Cisco UCS Director
- B. Cisco Intersight
- C. Cisco Data Center Network Manager
- D. Cisco Workload Optimization Manager

Answer: C

NEW QUESTION 152

What is an advantage of NFS as compared to Fibre Channel?

- A. NFS enable thin provisioning for LUNs.
- B. NFS provides the dynamic allocation of storage capacity.
- C. NFS removes the impact of IP overhead.
- D. NFS provides direct access to the underlying storage hardware.

Answer: B

Explanation:

<https://www.ciscolive.com/c/dam/r/ciscolive/apjc/docs/2018/pdf/BRKINI-1011.pdf>

NEW QUESTION 156

Which component is disrupted when the cisco integrated Management controller is upgraded on a cisco UCS series server?

- A. Cisco UCS Manager
- B. SAN traffic
- C. KVM sessions
- D. Data traffic

Answer: C

NEW QUESTION 158

An engineer performs a Firmware Auto Install upgrade through the Cisco UCS Manager. Which two Cisco UCS components are upgraded in the Install Server Firmware stage? (Choose two)

- A. Cisco UCS C-Series Rack-Mount Server
- B. I/O Modules
- C. Cisco UCS Manager
- D. Cisco UCS B-Series Blade Server
- E. Fabric Interconnects

Answer: BE

NEW QUESTION 162

An engineer updated firmware on Fabric Interconnects and activates it. However, the endpoint fails to boot from the new firmware image. What is expected to occur in this case?

- A. The system defaults to the backup image version
- B. The system defaults to and boots into GOLD firmware image
- C. The system defaults to the GOLD firmware image
- D. The system defaults to and boots into kickstart image

Answer: A

Explanation:

https://www.cisco.com/c/en/us/td/docs/unified_computing/ucs/ucs-manager/CLI-User-Guides/Firmware-Mgmt/4-0/b_UCSM_CLI_Firmware_Management_Guide_4-0/b_UCSM_CLI_Firmware_Management_Guide_4-0_chapter_011.html

NEW QUESTION 164

An engineer implements a Cisco UCS C-Series Server that must adhere to these security requirements:

- Unencrypted communication must be disabled.
- The session timeout must not exceed 15 minutes.
- Unencrypted traffic must be automatically diverted.
- CLI-based management must use nondefault ports.

Which configuration set meets these requirements?

☒ XML API Enabled
HTTP Port: 8080 / HTTPS Port: 8443
IPMI over LAN Enabled
Randomized Encryption Key

☒ HTTP Port: 80 / HTTPS Port: 443
Session Timeout: 900
Redirect HTTP to HTTPS Enabled
SSH Port: 2022

☒ Redfish Enabled checked
Redfish Port: 443
SSH Enabled checked
HTTPS Port: 8443

☐ SSH Enabled
SSH Port: 8022
SSH Timeout: 1200
IPMI over LAN Enabled

- A. Option A
- B. Option B
- C. Option C
- D. Option D

Answer: B

NEW QUESTION 168

Which command reduces the amount of time it takes to complete the ISSU on a Cisco Nexus 7000 series switch that has dual supervisor modules and two I/O modules?

- A. install all kickstart <image>system<image>parallel
- B. install all epld bootflash:<image>
- C. install all epld bootflash:<image>
- D. install all kickstart<image>system<image>

Answer: A

Explanation:

Graphical user interface, text, application Description automatically generated

Parallel Upgrade

Parallel Upgrade with I/O Modules

Starting with Cisco NX-OS Release 5.2(1), multiple linecards can be simultaneously upgraded, and the infrastructure support is available. This decreases the ISSU time when compared with an ISSU upgrade that is done serially (one card at a time).

To start a parallel upgrade, use the following command: `install all kickstart image system image parallel`

Up to three linecards can be upgraded in parallel with this command. During the upgrade process, the upgrade of the linecards is displayed in the output as follows:

```
Non-disruptive upgrading.
[#          ] 0%
Module 5 upgrade completed successfully.
.
.
.
Module 3 upgrade completed successfully.
.
```

https://www.cisco.com/c/en/us/td/docs/switches/datacenter/nexus7000/sw/upgrade/guide/cisco_nexus7000_software_upgrade_and_downgrade_guide_8x.html
https://www.cisco.com/c/en/us/td/docs/switches/datacenter/sw/7_x/nx-os/upgrade/guide/b_Cisco_Nexus_7000_Series_NX-OS_Software_Upgrade_and_Downgrade_Guide_Release_7-x.html#d54e307a1635

NEW QUESTION 171

Drag and drop the mechanisms to collect data from a network from the left onto their characteristics on the right

CLI-based scripts	Polling can take 5-10 minutes.
SNMP	Unstructured and susceptible to change and scripts failure.
syslog	It sends data from the device to a specific endpoint, for instance, JSON or by using Google protocol buffers.
telemetry	It pushes messages in the format "seq no:timestamp: %facility-severity MNEMONIC:description" and has limits in scale and efficiency.

- A. Mastered
- B. Not Mastered

Answer: A

Explanation:

Table Description automatically generated with low confidence

NEW QUESTION 174

A company must security harden its Cisco UCS C-Series servers. The security policy requires all out-of-band management to meet these requirements

- > It must encrypt all traffic
- > It must use nondefault ports
- > It must provide private administrative sessions Which Cisco IMC corrrflguraton meets the requirements?

```
data1# scope sol
data1 /sol # set enabled yes
data1 /sol # set encrypted tls1.2
data1 /sol # set port 3389
data1 /sol # set session max 2
data1 /sol # set deny-local yes

data1# scope cimc
data1 /cimc # set enabled yes
data1 /cimc # set encrypted tls
data1 /cimc # set kvm-port 1972
data1 /cimc # set max-sessions 1
data1 /cimc # set local-session deny

data1# scope oob
data1 /oob # set enabled no
data1 /oob # set encrypted yes
data1 /oob # set kvm-port 2068
data1 /oob # set max-sessions 1
data1 /oob # set local-access no

data1# scope kvm
data1 /kvm # set enabled yes
data1 /kvm # set encrypted yes
data1 /kvm # set kvm-port 3168
data1 /kvm # set max-sessions 1
data1 /kvm # set local-video no
```

- A. Option A
- B. Option B
- C. Option C
- D. Option D

Answer: D

NEW QUESTION 176

A network engineer repeatedly saves a configuration on Catalyst switches to NVRAM using the write memory command. What action should be taken to implement the same action on Nexus switches?

- A. Use the write memory command to save the configuration.
- B. Use the alias command to use the write memory command.
- C. Use the exit command to leave the configuration mode and save the configuration automatically.
- D. Use the wri command to use the copy running-config startup-config command.

Answer: B

NEW QUESTION 181

Which two actions should be performed before upgrading the infrastructure and firmware of multiple UCS blades? (Choose two)

- A. Verify if the bootflash on the fabric interconnects in the Cisco UCS has at least 15% available space
- B. Enable Smart Call Home feature during the firmware upgrade process
- C. Verify if the bootflash on the fabric interconnects in the Cisco UCS has at least 10% available space
- D. Run the Check Conformance feature to verify that all your components are running the compatible firmware version after the upgrade
- E. Get Full State and All Configuration backup files before beginning the upgrade

Answer: DE

NEW QUESTION 183

A company is running a pair of Cisco Nexus 7706 series switches as part of a data center segment. All network engineers have restricted read-write access to the core switches. A network engineer must add a new FCoE VLAN to allow traffic from services toward FCoE storage. Which set of actions must be taken to meet these requirements?

- A. * 1. Create a user-defined role and add the required privileges. * 2. Assign a role to a user.
- B. * 1. Add the required privilege to the VDC-admin role.
- C. Commit the changes to the active user database.
- D. * 1. Modify a network-operator role and add the required privileges. * 2. Assign a VDC-operator role to a user.
- E. * 1. Assign the network-admin role to a user. * 2. Commit the role to the switch to the active user database

Answer: B

NEW QUESTION 186

What is a benefit of using Cisco Tetration?

- A. It collects telemetry data from servers and then uses software sensors to analyze flow information.
- B. It collects near-real-time data from servers and inventories the software packages that exist on servers.
- C. It collects policy compliance data and process details.
- D. It collects enforcement data from servers and collects interpacket variation.

Answer: A

NEW QUESTION 189

A network engineer must create an EEM script that saves a copy of the running configuration on bootflash and writes a message to syslog when a user saves the configuration to a Cisco Nexus switch. Which configuration set should be applied to complete this task?

- event manager applet local- backup
 - event cli match "copy running-config startup-config"
 - action 1 cli copy running-config bootflash:/current_config.txt
 - action 2 syslog msg Configuration saved and copied to bootflash
- event manager applet local- backup
 - event cli match "write memory"
 - action 1 cli copy running-config bootflash:/current_config.txt
 - action 2 snmp-trap strdata "Configuration saved and copied to bootflash"
- event manager applet local- backup
 - event cli match "copy running-config startup-config"
 - action 1 cli copy running-config bootflash:/current_config.txt
 - action 2 syslog msg Configuration saved and copied to bootflash
 - action 3 event-default
- event manager applet local- backup
 - event cli match "write memory"
 - action 1 cli copy running-config bootflash:/current_config.txt
 - action 2 syslog msg Configuration saved and copied to bootflash
 - action 3 event-default

- A. Option A
- B. Option B
- C. Option C
- D. Option D

Answer: C

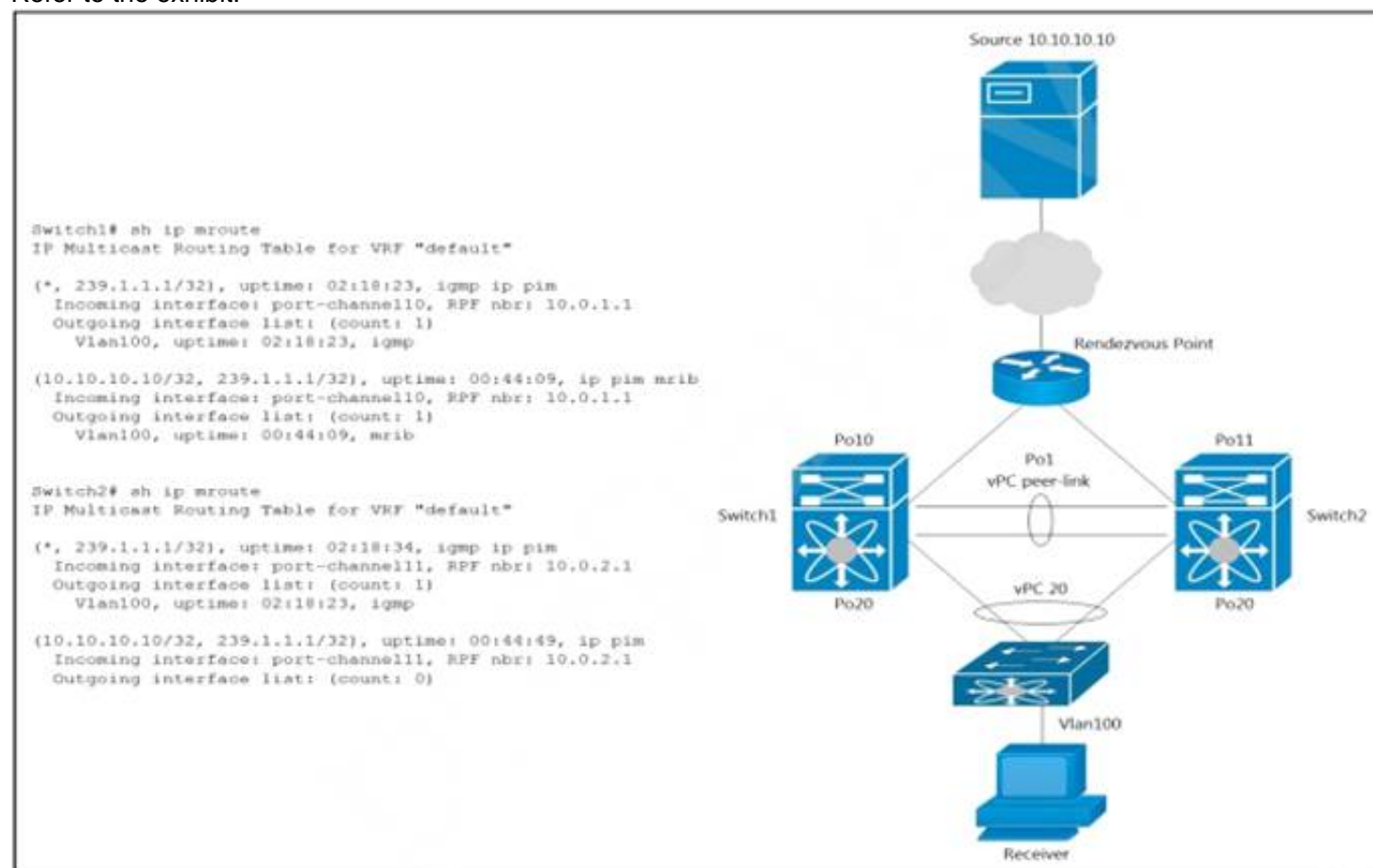
Explanation:

The command write memory is not valid in NX-OS
 The "event-default"

If you want to allow the triggered event to process any default actions, you must configure the EEM policy to allow the default action. For example, if you match a CLI command in a match statement, you must add the event-default action statement to the EEM policy or EEM will not allow the CLI command to execute.

NEW QUESTION 194

Refer to the exhibit.



A host with a source address 10.10.10.10 sends traffic to multicast group 239.1.1.1. How do the vPC switches forward the multicast traffic?

- A. If multicast traffic is received on Switch1 over the vPC peer-link, the traffic is dropped
- B. If multicast traffic is received on Po10 Switch1, the traffic is forwarded out on Po1 and Po20
- C. If multicast traffic is received on Po11 Switch2, the traffic is forwarded out only on Po20
- D. If multicast traffic is received on Po11 Switch2, the traffic is dropped.

Answer: D

Explanation:

<https://www.cisco.com/c/en/us/support/docs/ip/multicast/214140-multicast-forwarding-in-vpc-based-on-loc.htm>

NEW QUESTION 197

Refer to the exhibit.

```
show install all impact epld bootflash:n9000-epld.6.1.2.I3.1.img
```

What is the outcome of this command when the EPLD is updated on a Cisco Nexus 9000 series switch?

- A. displays the compatibility of the EPLD upgrade and the image in the bootflash
- B. shows a simulated upgrade of the EPLD
- C. upgrades the EPLD on the switch disruptively
- D. displays the impact of the upgrade on the operation of the switch

Answer: D

Explanation:

You can use the show install impact epld bootflash: command to determine whether the EPLDs can be upgraded for all the modules or for specific modules on a switch. This command indicates the current EPLD images, new EPLD images, and whether the upgrades would be disruptive to switch operations. <https://www.cisco.com/c/en/us/td/docs/switches/datacenter/nexus9000/sw/6-x/epld/n9k-epld-rn-61.html>

NEW QUESTION 202

The Cisco UCS blade chassis must send SNMPv3 traps to a network monitoring system. The SNMP trap messages should be authenticated and have protection from closure. Which SNMP security privileged level should be configured?

- A. noPriv
- B. auth
- C. noAuth
- D. priv

Answer: D

NEW QUESTION 204

An engineer must migrate a Cisco UCS C-Series server from Cisco SingleConnect to direct integration mode. The Cisco UCS Manager Rack Server Discovery Policy and Rack Management Connection Policy are set to immediate and Auto-Acknowledge. Which set of steps accomplishes this task?

- ☐ Disconnect the cables from the FEX.
Connect the cables to appliance ports on the fabric interconnect.
Reset the Cisco IMC of the server.
- ☐ Disconnect the cables from the FEX.
Connect the cables to server ports on the fabric interconnect.
Reset the Cisco IMC of the server.
- ☒ Disconnect the cables from the FEX.
Connect the cables to appliance ports on the fabric interconnect.
Reacknowledge the server.
- ☐ Disconnect the cables from the FEX.
Connect the cables to server ports on the fabric interconnect.
Reacknowledge the server.

- A. Option A
- B. Option B
- C. Option C
- D. Option D

Answer: D

NEW QUESTION 207

Drag and drop the Hyperflex characteristics from the left onto the appropriate Hyper Hex node types on the right.

uses only SSD drives for caching

contains HDDs for the capacity layer

uses SSD drives or NVMe storage for caching

has SSD drives for the capacity layer

recommended for repeatable and sustainable high performance, especially for scenarios with a larger working set of data

recommended for capacity-sensitive solutions, lower budgets, and fewer performance-sensitive applications

Hybrid Node

All Flash Node

- A. Mastered
- B. Not Mastered

Answer: A

Explanation:

uses only SSD drives for caching

contains HDDs for the capacity layer

uses SSD drives or NVMe storage for caching

has SSD drives for the capacity layer

recommended for repeatable and sustainable high performance, especially for scenarios with a larger working set of data

recommended for capacity-sensitive solutions, lower budgets, and fewer performance-sensitive applications

Hybrid Node

uses only SSD drives for caching

contains HDDs for the capacity layer

recommended for capacity-sensitive solutions, lower budgets, and fewer performance-sensitive applications

All Flash Node

uses SSD drives or NVMe storage for caching

has SSD drives for the capacity layer

recommended for repeatable and sustainable high performance, especially for scenarios with a larger working set of data

NEW QUESTION 211

Which protocol does Cisco Hyperflex use to share data among nodes in a VMware vSphere environment?

- A. CIFS
- B. FCoE
- C. SMB
- D. NFS

Answer: D

NEW QUESTION 215

Refer to the exhibit.

```
restart pim
```

Which result of running the command is true?

- A. The PIM database is deleted.
- B. Multicast traffic forwarding is suspended.
- C. PIM join messages are suspended.
- D. MRIB is flushed

Answer: A

Explanation:

When you restart PIM, the following tasks are performed: The PIM database is deleted. The MRIB and MFIB are unaffected and forwarding of traffic continues. The multicast route ownership is verified through the MRIB. Periodic PIM join and prune messages from neighbors are used to repopulate the database.
https://www.cisco.com/c/en/us/td/docs/switches/datacenter/nexus9000/sw/6-x/multicast/configuration/guide/b_C

NEW QUESTION 216

An engineer is implementing a Cisco ACI fabric and must use static VLAN range as part of a VMM deployment. The static VLAN must be incorporated into the dynamic VLAN pool. The existing VLAN pool is set for dynamic allocation. Which action accomplishes this goal?

- A. Add the VLAN to the pool configured with Inherit Allocation Mode from parent.
- B. Change the existing VLAN pool to static allocation mode.
- C. Add a static VLAN allocation range to the VLAN pool.
- D. Create a static reservation within the dynamic VLAN pool.

Answer: C

NEW QUESTION 220

Refer to the exhibit

MDS-B# show role			
Role: network-admin			
Description: Predefined Network Admin group. This role cannot be modified.			
Vsan policy: permit (default)			

Rule	Type	Command-type	Feature

1	permit	clear	*
2	permit	config	*
3	permit	debug	*
4	permit	exec	*
5	permit	show	*
Role: default-role			
Description: This is a system defined role and applies to all users.			
Vsan policy: permit (default)			

Rule	Type	Command-type	Feature

1	permit	show	system
2	permit	show	snmp
3	permit	show	module
4	permit	show	hardware
5	permit	show	environment
Role: san-users			
Description: SAN users			
Vsan policy: permit (default)			

A network engineer created a new role to be assigned to the SAN users The requirement is for users to have these characteristics

- permitted to show access to the system, SNMP, module, and hardware information
- permitted to run debug zone and exec fcping commands
- restricted from accessing show feature environment command

Which configuration set meets these requirements?

- A. Option A
- B. Option B
- C. Option C
- D. Option D

Answer: D

NEW QUESTION 224

Drag and drop the steps on the left onto the order that they must be implemented on the right to recover a fabric interconnect when there is no working image on the bootflash.

Copy the main image files.	step 1
Configure the management interfaces.	step 2
Boot the kickstart image using TFTP.	step 3
Install the files.	step 4

- A. Mastered
- B. Not Mastered

Answer: A

Explanation:

Copy the main image files.	Boot the kickstart image using TFTP.
Configure the management interfaces.	Configure the management interfaces.
Boot the kickstart image using TFTP.	Copy the main image files.
Install the files.	Install the files.

NEW QUESTION 225

Which Cisco UCS Manager XML encoded backup type must be used to back up user names, roles, and service profiles?

- A. Full State Configuration
- B. Logical Configuration
- C. All Configuration
- D. System Configuration

Answer: C

NEW QUESTION 227

A content delivery network sends video traffic to a multicast distribution device where the receiver requests the traffic from the multicast distribution device through an IGMP join message When the traffic reaches the multicast routing device from a CDN the switching network populates the multicast routing table in the group (S G) and the multicast distribution device sends the required traffic back to the receiver. Which feature is used to send back the trafic from the streamer to the receiver in the group (S G)?

- A. RP
- B. IGMP
- C. Reverse Path Forwarding
- D. Source Specific Multicast

Answer: C

NEW QUESTION 229

Drag and drop the keywords onto the URL request to collect all the subnets configured under tenant Production using a REST API. Not all options are used.

https://{apic_ip}}/api/

/uni/tn-Production.json?

=

&

=fvSubenet

target-subtree-class

query-target-filter

query-target

children

subtree

class

mo

- A. Mastered
B. Not Mastered

Answer: A

Explanation:
Graphical user interface, text Description automatically generated

NEW QUESTION 230
Refer to the exhibit.

```
; Router 1 configuration
interface loopback1
  ip address 10.10.32.121/30
  ip ospf network point-to-point
  ip router ospf 1 area 0.0.0.0
  ip pim sparse-mode

ip pim rp-address 10.10.32.122 group-list 225.0.0.0/8 bi-dir
```

In a bidirectional PIM network using Phantom RP as an RP redundancy mechanism, two Cisco NX-OS routers have these requirements:

- R1 must be the active RP.
- R2 must be the backup RP that is used only if R1 is not reachable

Drag and drop the configuration steps to complete the configuration for Router 2. Not all configuration steps are used.

; Router 2 configuration

interface loopback1

ip address

ip ospf network

ip router ospf 1 area 0.0.0.0

ip pim

ip pim rp-address

group-list 225.0.0.0/8 bi-dir

10.10.32.121/32

10.10.32.121

point-to-point

broadcast

10.10.32.121/29

10.10.32.122

sparse-mode

dense-mode

- A. Mastered
B. Not Mastered

Answer: A

Explanation:

Graphical user interface, text, application Description automatically generated

Answer :

ip address 10.10.32.121/29

ip ospf network point-to-point

router ospf 1 area 0.0.0.0

ip pim sparse-mode

ip pim rp-address 10.10.32.122 group-list 255.0.0.0/8 bi-dir

NEW QUESTION 235

Which feature is supported with an In-Service Software Upgrade on a Cisco Nexus 9000 Series Switch?

- A. configuration changes during an upgrade
- B. nondisruptive upgrades via nonstop forwarding
- C. zero downtime downgrades via dual supervisor modules
- D. upgrades to Individual modules and line cards

Answer: B

NEW QUESTION 236

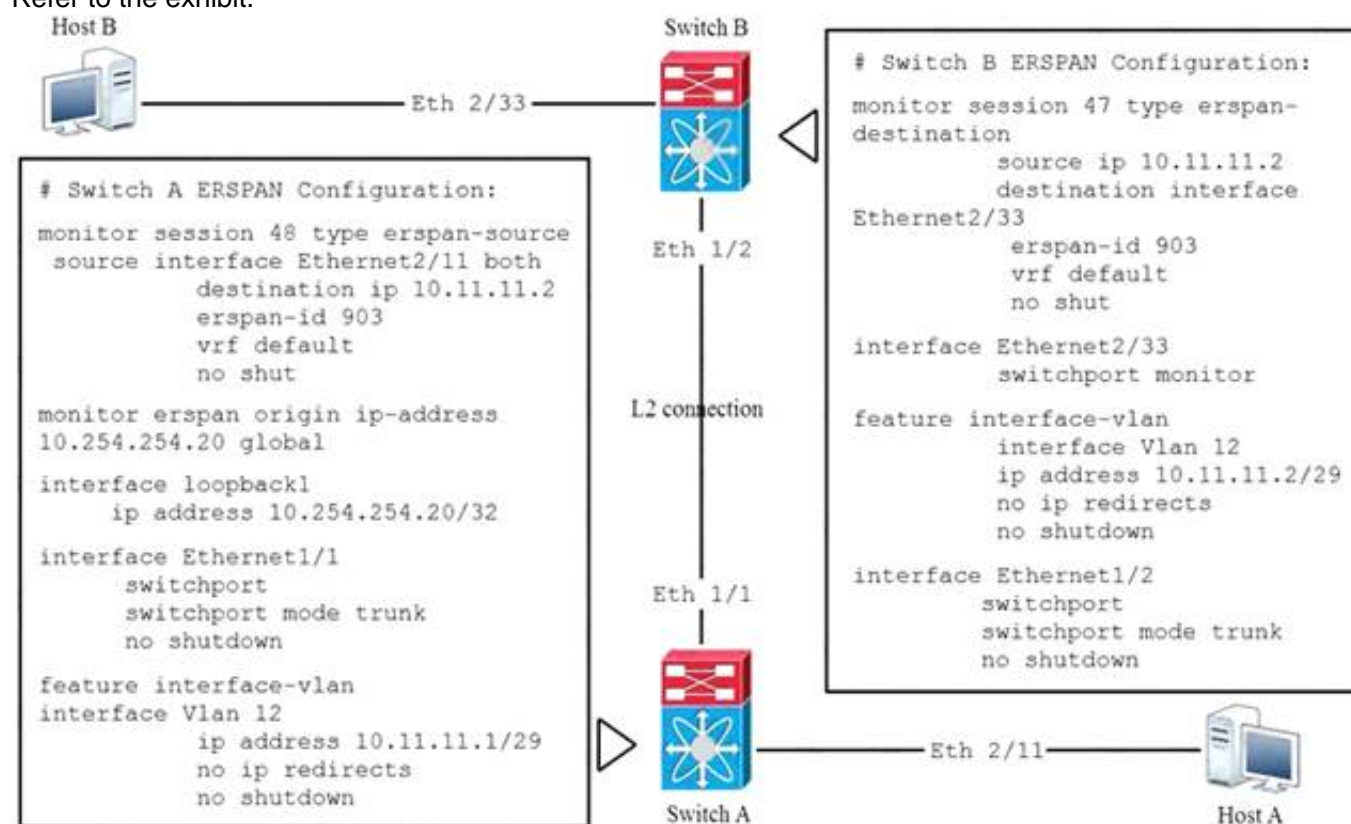
An engineer configures a role for a new user in Cisco UCS Manager The role should allow the user to configure vHBAs, vNICs, and server port types. Which role should be assigned to allow the engineer to complete this task?

- A. network administrator
- B. operations
- C. server-compute
- D. AAA administrator

Answer: A

NEW QUESTION 238

Refer to the exhibit.



Which statement about the ERSPAN configuration in this environment is true.

- A. Host A is the source of ERSPAN spanned traffic and host B is the traffic analyzer.
- B. Host B is the source of ERSPAN spanned traffic and host A is the traffic analyzer.
- C. The session number of the source of ERSPAN spanned traffic must have a session ID of 48 for the traffic analyzer to receive the traffic.
- D. The session number of the source of ERSPAN spanned traffic must have a session ID of 47 for the traffic analyzer to receive the traffic.

Answer: A

NEW QUESTION 240

An engineer must implement private VLANs for a group of Cisco UCS 8-Series servers. The primary VLAN is present, But the secondary VLAN must Be added to Both fabrics. Which configuration set accomplishes this task?

- ☐ UCS-A# scope eth-uplink
UCS-A /eth-uplink # create vlan vlan1981 1981
UCS-A /eth-uplink/vlan* # set sharing none
- ☒ UCS-A# scope eth-uplink
UCS-A /eth-uplink # create vlan vlan1981 1981
UCS-A /eth-uplink/vlan* # set sharing isolated
- ☐ UCS-A# scope eth-uplink
UCS-A /eth-uplink # scope fabric a
UCS-A /eth-uplink/fabric # create vlan vlan1981 1981
UCS-A /eth-uplink/fabric/vlan* # set sharing private
- ☐ UCS-A# scope eth-uplink
UCS-A /eth-uplink # scope fabric a
UCS-A /eth-uplink/fabric # create vlan vlan1981 1981
UCS-A /eth-uplink/fabric/vlan* # set sharing secondary

- A. Option A
B. Option B
C. Option C
D. Option D

Answer: B

NEW QUESTION 244

An engineer must export the Cisco UCS Manager configuration for backup purposes. The requirement is to export the configuration that contains the AAA and RBAC configuration Also the file must be stored a human-readable format 'Much backup type must be selected to meet these requirements?

- A. logical configuration
B. system configuration
C. fun state
D. all configuration

Answer: B

NEW QUESTION 249

Refer to the exhibit.

Python Code:

```
import requests
import json

url='http://lab-93180bdlf-sw1/ins'
switchuser='dazfre'
switchpassword='Clscorox0'

myheaders={'content-type' : 'application/json'}
payload={
    "ins_api": {
        "version": "1.0",
        "type": "cli_show",
        "chunk": "0",
        "sid": "1",
        "input": "configure terminal : feature hsrp",
        "output_format": "json"
    }
}
response = requests.post(url,data=json.dumps(payload),
headers=myheaders,auth=(switchuser,switchpassword))

print(response.text)

ERROR MESSAGE
{
    "ins_api" : [
        {
            "type": "cli_show",
            "version": "1.0",
            "sid": "eoc",
            "outputs": [
                {
                    "output": [
                        {
                            "clierror": "% invalid command\n",
                            "input": "configure terminal",
                            "msg": "input CLI command error",
                            "code": "400"
                        },
                        {
                            "clierror": "% invalid command\n",
                            "input": "feature hsrp",
                            "msg": "input CLI command error",
                            "code": "400"
                        }
                    ]
                }
            ]
        }
    ]
}
```

Why does the python code for Cisco NX-API print an error message?

- A. The "type" is wrong in the header of the request and should be "cli_conf".
- B. NX-API does not allow configuration for features via the requests module.
- C. The "type" is wrong in the body of the request and should be "cli_conf".
- D. The JSON is not a supported format for the NX-API.

Answer: C

Explanation:

"Commands that belong to different message types should not be mixed. For example, show commands are cli_show message type and are not supported in cli_conf mode." https://www.cisco.com/c/en/us/td/docs/switches/datacenter/nexus7000/sw/programmability/guide/cisco_nexus7000_programmability_guide_8x/b-cisco-nexus7000-programmability-guide-8x_chapter_011.html

the payload "type" value is wrong in the body of the request. For the request to be successful, it should be changes to "cli_conf".

For example, if we run the same request with the updated payload:

```
{
  "ins_api": { "version": "1.0",
    "type": "cli_conf",
    "chunk": "0",
    "sid": "1",
    "input": "configure terminal ;feature hsrp", "output_format": "json"
  }
}
```

We get a 200 response:

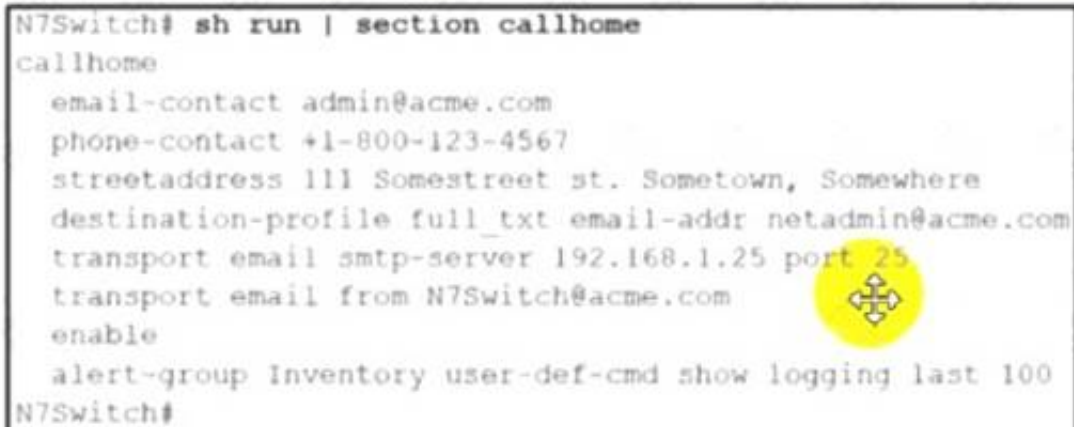
```
{
  "ins_api": { "sid": "eoc",
    "type": "cli_conf",
    "version": "1.0", "outputs": {
      "output": [
        {
          "code": "200",
          "msg": "Success",
          "body": {}
        }
      ]
    }
  },
  {
    "code": "200",
```

```
"msg": "Success",
"body": {}
}
]
}
}
}
```

CLI verification: nxos9kv# sh run | inc hsrp feature hsrp

NEW QUESTION 252

Refer to the exhibit.



```
N7Switch# sh run | section callhome
callhome
email-contact admin@acme.com
phone-contact +1-800-123-4567
streetaddress 111 Somestreet st. Sometown, Somewhere
destination-profile full_txt email-addr netadmin@acme.com
transport email smtp-server 192.168.1.25 port 25
transport email from N7Switch@acme.com
enable
alert-group Inventory user-def-cmd show logging last 100
N7Switch#
```

A network engineer is configuring the Smart Call Home feature on a Cisco Nexus Series Switch. An email must be generated that contains the last 100 lines of the log every time a new piece of hardware is inserted into the chassis. Which command must be added to the configuration to receive the email?

- A. alert-group Linecard-Hardware user-def-cmd show logging last 100
- B. destination-profile Operations alert-group Inventory
- C. destination-profile Operations message-level 2
- D. alert-group Operations user-def-cmd show logging last 100

Answer: A

NEW QUESTION 254


An engineer must perform a nondisruptive software upgrade on a dual supervisor Cisco Nexus 7000 series switch. What is the cause of the upgrade being disruptive?

- A. The show install all impact command is not issued before the upgrade
- B. The kickstart image is installed by using the Install all kickstart image system image command
- C. Attempt to simultaneously upgrade more than three cards
- D. Change to the configuration settings or the network connections during the upgrade process

Answer: D

NEW QUESTION 258

Refer to the exhibit.



```
NEXUS (config)# feature tacacs+
NEXUS (config)# tacacs-server timeout 5
NEXUS (config)# tacacs-server directed-request
NEXUS (config)# tacacs-server deadtime 0
NEXUS (config)# tacacs server host 10.1.50.20 port 49
NEXUS (config)# tacacs-server host 10.1.50.20 key 7 "Flwhg123" timeout 1
NEXUS (config)# aaa group server tacacs+ ISE
NEXUS (config-tacacs+)# server 10.1.50.20
NEXUS (config-tacacs+)# deadtime 10
NEXUS (config-tacacs+)# use-vrf management
NEXUS (config-tacacs+)# source-interface mgmt 0
NEXUS (config)# aaa authentication login default group ISE
```

What is the result of implementing this configuration?

- A. The TACACS+ server uses the type-6 encrypted format.
- B. The switch queries the TACACS+ server by using a clear text PAP login.
- C. The timeout value on the TACACS+ server is 10 seconds.
- D. The switch queries the TACACS+ server by using an encrypted text PAP login.

Answer: D

Explanation:

tacacs-server key

To configure a global TACACS+ shared secret key, use the tacacs-server key command. To remove a configured shared secret, use the no form of this command.

tacacs-server key [0 | 7] shared-secret Syntax Description

7 (Optional) Configures a preshared key specified in encrypted text to authenticate communication between the TACACS+ client and server.

By default, the Cisco NX-OS device uses Password Authentication Protocol (PAP) authentication between the Cisco NX-OS device and the remote server. If you enable CHAP, you need to configure your RADIUS or TACACS+ server to recognize the CHAP vendor-specific attributes (VSAs).

NEW QUESTION 262

An engineer must perform backup and restore of the Cisco UCS Manager configuration. The configuration must be stored on a remote server via XML encoding. The backup must store the configurations of the chassis, FEX, rack servers, IOMs, and blade server. Which set of actions accomplishes these goals?

- A. Perform a logical configuration backup and run the replace import method.
- B. Perform a full state configuration backup and run the restore procedure.
- C. Perform a system configuration backup and run the merge import method
- D. Perform an all configuration backup and run the system restore procedure.

Answer: A

NEW QUESTION 266

An engineer must configure the HSRP protocol to implement redundancy using two Cisco Nexus Series Switches. In addition, the HSRP must meet these requirements:

- Switch1 must retain the primary role if switch2 goes offline.
 - Switch1 must retain the primary role until normal conditions are restored.
 - Switch1 and switch2 must ensure that the routing tables are converged before taking the active role.
 - switch2 must retain the primary role if the default gateway is not reachable.
- Drag and drop the configuration commands from the right to the left to meet the requirements. The commands are used more than once. Not all commands are used.

```
! switch1
track 100 ip route 0.0.0.0/0 reachability

interface ethernet 1/1
ip 209.165.200.226/27

hsrp 200
ip 209.165.200.225
priority 210
[ ]
[ ]
no shutdown

! switch2
track 100 ip route 0.0.0.0/0 reachability

interface ethernet 1/1
ip 209.165.200.227/27

hsrp 200
ip 209.165.200.225
[ ]
[ ]
no shutdown
```

preempt delay minimum 30

track 100 decrement 200

track 200 decrement 200

preempt sync 30

- A. Mastered
- B. Not Mastered

Answer: A

Explanation:


```
! switch1
track 100 ip route 0.0.0.0/0 reachability

interface ethernet 1/1
ip 209.165.200.226/27

hsrp 200
ip 209.165.200.225
priority 210
track 100 decrement 200
preempt delay minimum 30
no shutdown

! switch2
track 100 ip route 0.0.0.0/0 reachability

interface ethernet 1/1
ip 209.165.200.227/27

hsrp 200
ip 209.165.200.225
track 100 decrement 200
preempt delay minimum 30
no shutdown
```

```
preempt delay minimum 30
track 100 decrement 200
track 200 decrement 200
preempt sync 30
```

NEW QUESTION 268

An engineer must configure the HSRP protocol between two Cisco Nexus 9000 Series Switches. This configuration is present on Nexus A.

```
! Nexus A
key chain NHRP-KEYS
key 1010
key-string 7 072a43795c1d0c4050883003163b3e2121a720361a021e11
accept-lifetime 00:00:00 Jan 01 2021 23:59:59 Aug 31 2021
send-lifetime 00:00:00 Jan 01 2021 23:59:59 Jul 31 2021
key 1020
key-string 7 086f43cd5c150c1702630203163b3e2221a520261a011a12
accept-lifetime 00:00:00 Jul 01 2021 23:59:59 Dec 31 2021
send-lifetime 00:00:00 Jul 01 2021 23:59:59 Dec 31 2021
interface ethernet 1/1
ip 209.165.200.226/27
hsrp 200
priority 201
ip 209.165.200.225
-- missing output --
no shutdown
```

The final HSRP configuration must meet these requirements:

- > The HSRP communication must be secured on both switches
- > Both switches must support more than 300 groups

Which two commands must be added to the HSRP configuration on Nexus A to complete these requirements? (Choose two)

- A. hsrp version 1
- B. hsrp version 2
- C. authentication text 1020
- D. authenticate md5 key-chain NHRP-KEYS
- E. authentication text 1010

Answer: BD

NEW QUESTION 271

A network engineer needs to upgrade the EPLDs of the fabric modules for a Cisco MDS director-class switch. In which order are components reloaded during the process?

- A. one fabric module at the time
- B. all fabric modules followed by the entire switching platform
- C. all fabric modules in parallel
- D. one module and one supervisor at the time

Answer: C

Explanation:

https://www.cisco.com/c/en/us/td/docs/switches/datacenter/mds9000/sw/7_3/release_notes/epld/epld_rn_7x.html

Graphical user interface, text, application Description automatically generated

Installing a Fabric Module EPLD Update

The Cisco MDS 9700 series and Cisco MDS 9513 director class switch have dedicated fabric modules. These modules contain EPLDs, which can be upgraded as described in this section. All other Cisco MDS switches do not have these modules, so this process is not applicable for them.

For Cisco MDS 9700 Series of switches, use the `install all epld uri parallel xbar-module slot` command to update EPLD images on the fabric modules. This process reloads the updated module. To ensure that the data traffic performance is not affected while the module is reloading, check the fabric bandwidth utilization by using the `show hardware fabric-utilization detail` command. If there is adequate reserve fabric bandwidth available before the update starts, then the update will be nondisruptive.

NEW QUESTION 274

An engineer must optimize ARP responses and reduce unnecessary ARP broadcasts over the VXLAN/EVPN fabric. Which action accomplishes these tasks?

- A. Configure ip proxy-arp under the VLAN SVI associated with the VXLAN VNI.
- B. Configure ip proxy-arp within the VXLAN VNI configuration under the VTEP NVE interface.
- C. Configure suppress-arp within the VXLAN VNI configuration under the VTEP NVE interface.
- D. Configure suppress-arp under the VLAN SVI associated with the VXLAN VNI.

Answer: C

NEW QUESTION 275

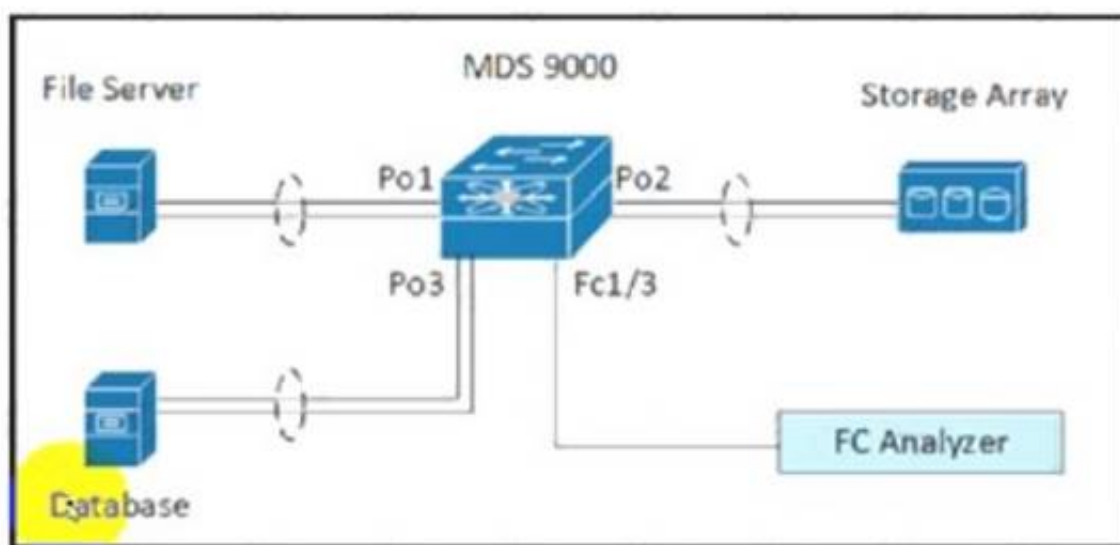
A Cisco ACI engineer must configure an access port on a Cisco ACI leaf switch. The access policy should be configured so that it supports L3out connectivity concurrently with several EPGs that are mapped to this interface with the static port method. How should the access policy be configured?

- A. by linking the interface policy group to multiple Attachable Access Entity Profiles
- B. with a single Attachable Access Entity Profile that is linked to the corresponding routed domain and physical domain
- C. with two interface policy groups that are linked to the same interface profile port selector
- D. by mapping a single physical domain, mapped to the L3out and EPG interfaces

Answer: D

NEW QUESTION 278

Refer to the exhibit.



```
interface port-channel 1
  channel mode active
interface port-channel 2
  channel mode active
interface fcl/1-2
  channel-group 1
  no shutdown
interface fcl/4-5
  channel-group 2
  no shutdown
interface fcl/7-8
  channel-group 3
  no shutdown
vsan database
  vsan 100 name fabricl
  vsan 100 interface port-channel 1
  vsan 100 interface port-channel 2
  vsan 100 interface port-channel 3
```

A storage engineer must monitor the traffic from the file server to the FC analyzer. The file server and the database use the same storage array. Which configuration must be applied to the Cisco MDS 9000 Series Switch to accomplish this goal?

- ☐ MDS-9000(config)# span session 1
MDS-9000(config-span)# destination interface fc1/3
MDS-9000(config-span)# source interface port-channel 1
- ☒ MDS-9000(config)# span session 1
MDS-9000(config-span)# destination interface port-channel 2
MDS-9000(config-span)# source interface vsan 100
- ☐ MDS-9000(config)# span session 1
MDS-9000(config-span)# destination interface port-channel 2
MDS-9000(config-span)# source interface fc1/1
- ☐ MDS-9000(config)# span session 1
MDS-9000(config-span)# destination interface vsan 100
MDS-9000(config-span)# source interface port-channel 1

- A. Option A
- B. Option B
- C. Option C
- D. Option D

Answer: B

NEW QUESTION 280

An administrator needs to configure an automated policy to shut down a link when a given threshold is exceeded on MDS switch. Which feature needs to be used?

- A. Scheduler
- B. RMON
- C. EEM
- D. Call Home

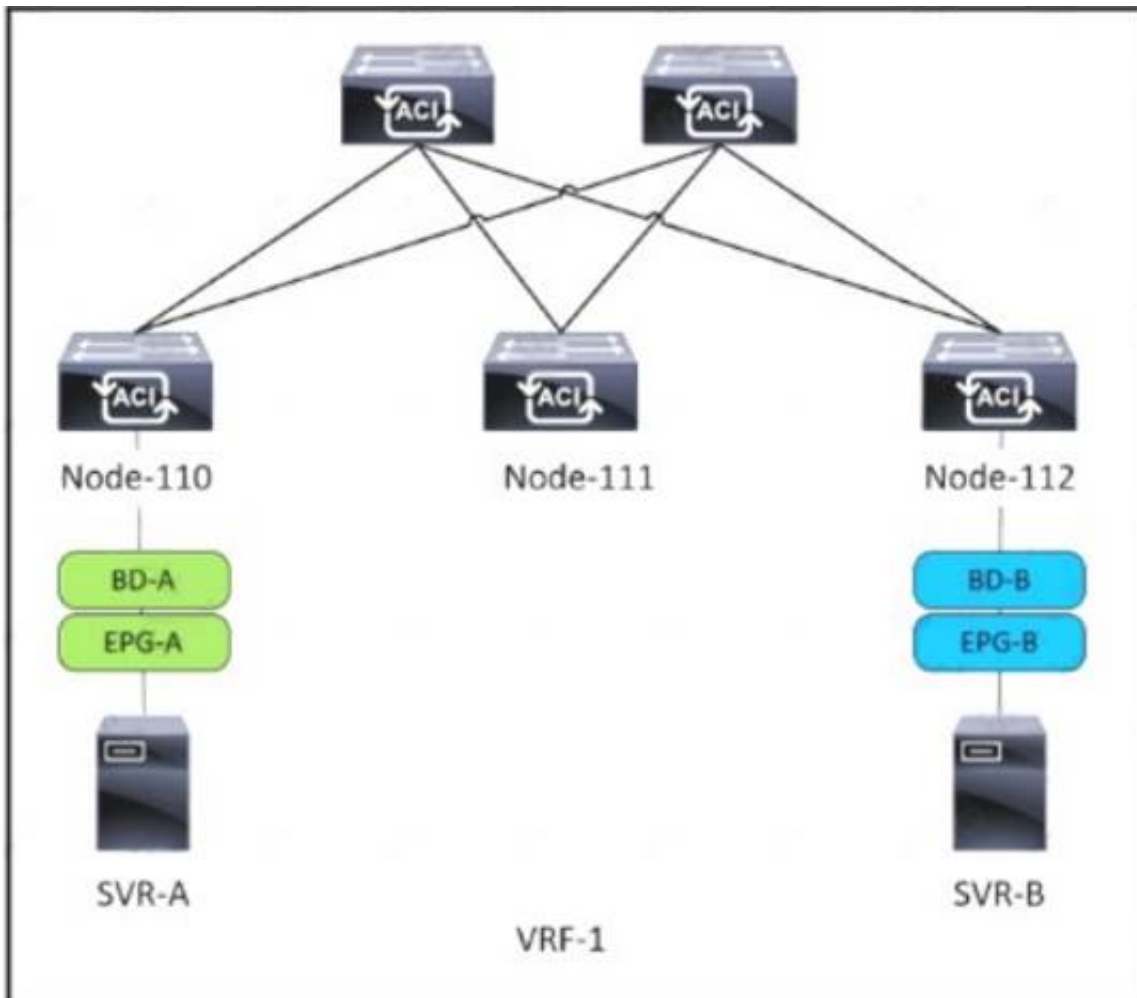
Answer: C

Explanation:

https://www.cisco.com/c/en/us/td/docs/switches/datacenter/mds9000/sw/6_2/configuration/guides/interfaces/nx-os/cli_interfaces/intf.html

NEW QUESTION 282

Refer to the exhibit.



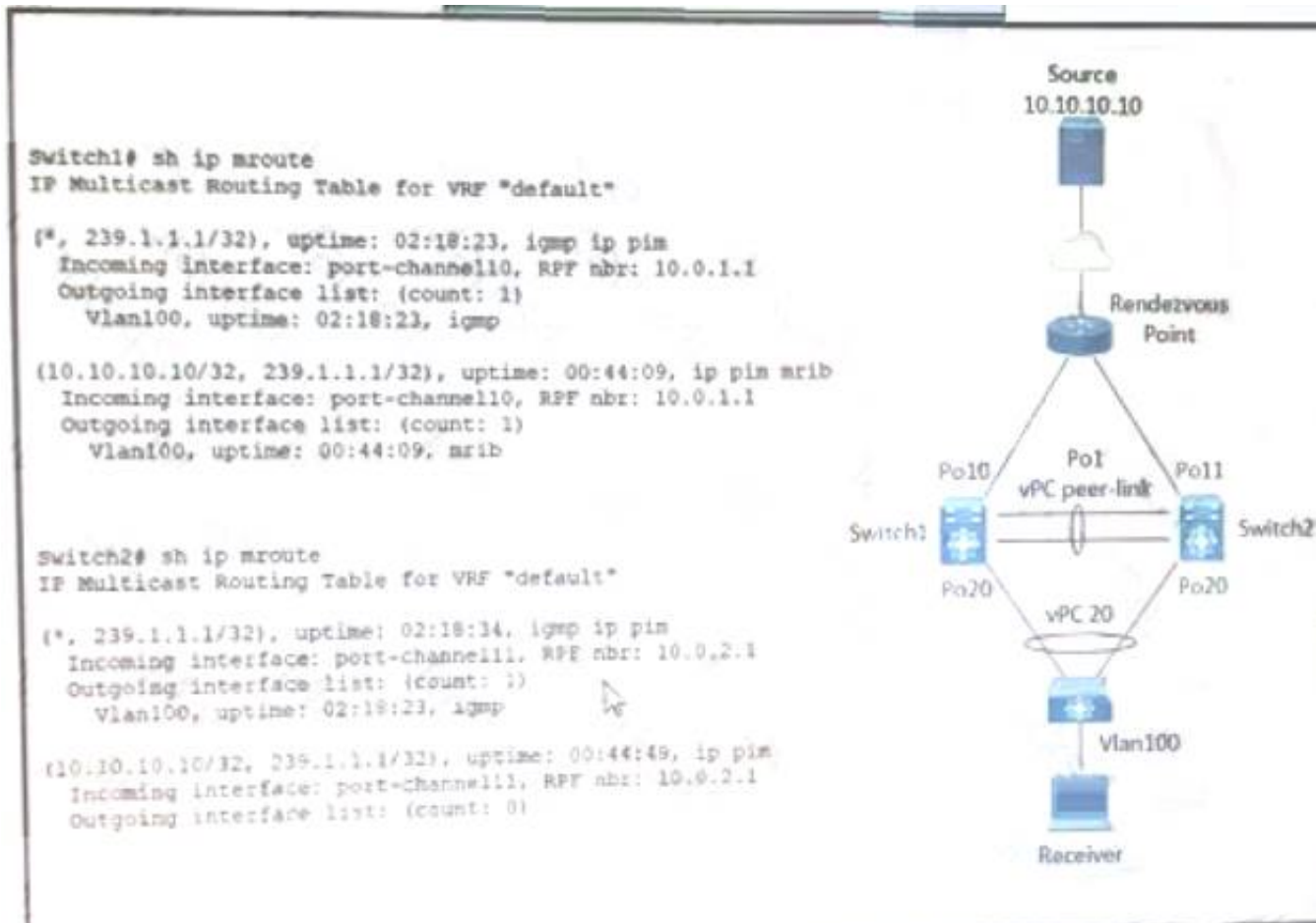
SVR-A in EPG-A/BD-A fails to reach SVR-B in EPG-B/BD-B. Which two conditions should be verified to analyze the traffic between the two EPGs? (Choose two.)

- A. A contract exists between EPG-A and EPG-B and allows the traffic.
- B. Limit Endpoint Learning is disabled on the bridge domain for EPG-B.
- C. SVR-B is learned as an endpoint in EPG-B from Node-112.
- D. EPG-A and EPG-B are excluded from the preferred group.
- E. The bridge domain for EPG-B floods ARP packets.

Answer: AC

NEW QUESTION 283

Refer to the exhibit.



A host with source address 10.10.10.10. sends traffic to multicast group 239.1.1.1. how do the vPC switches forward the multicast traffic?

- A. If multicast traffic is received on Po11 Switch2, the traffic is forwarded out only one Po20.
- B. If multicast traffic is received on Po10 Switch1, the traffic is forwarded out on Po1 and Po20.
- C. If multicast traffic is received on Po11 and Switch2, the traffic is dropped.
- D. If multicast traffic is received on Switch over the vPC peer-link, the traffic is dropped.

Answer: C

Explanation:

<https://www.cisco.com/c/en/us/support/docs/ip/multicast/214140-multicast-forwarding-in-vpc-based-on-loc.htm>

NEW QUESTION 284

Which MAC address is an HSRP version 2?

- A. 0100.5E7F.FFFF
- B. 3799.9943.3000
- C. 0000.0C9F.F0C8
- D. 0000.0C07.AC1H

Answer: C

NEW QUESTION 289

Several production and development database servers exist in the same EPG and IP subnet. The IT security policy is to prevent connections between production and development. Which attribute must be used to assign the servers to different microsegments?

- A. Data center
- B. VMM domain
- C. VM name
- D. IP address

Answer: C

Explanation:

https://www.cisco.com/c/en/us/td/docs/switches/datacenter/aci/apic/sw/3-x/virtualization/b_ACI_Virtualization_

Example: **Microsegmentation with Cisco ACI Within a Single EPG or Multiple EPGs in the Same Tenant**

You might assign web servers to an EPG so that you can apply the similar policies. By default, all endpoints within an EPG can freely communicate with each other. However, if this web EPG contains a mix of production and development web servers, you might not want to allow communication between these different types of web servers. Microsegmentation with Cisco ACI allows you to create a new EPG and autoassign endpoints based on their VM name attribute, such as "Prod-xxxx" or "Dev-xxx".

NEW QUESTION 292

Which data structure results from running this Python code?

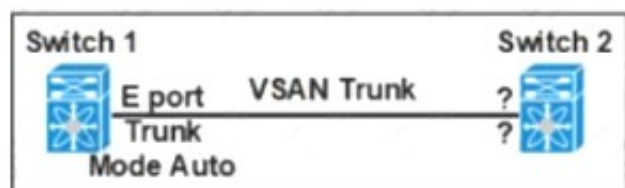
```
>>> import json
>>> f = open('fname.json', 'r')
>>> var1 = json.load(f)
>>> var1
{'u'bd': 'u'bd1', 'u'ap': {'u'epgs': [{'u'name': 'u'app'}, {'u'name': 'u'web'}, {'u'name': 'u'db'}], 'u'name': 'u'OnlineStore'}, 'u'name': 'u'39106329', 'u'pvn': 'u'pvn1'}
```

- A. Set
- B. Tuple
- C. Dictionary
- D. List

Answer: A

NEW QUESTION 296

Refer to the exhibit.



Which feature set must be used to configure on switch 2 to establish a VSAN trunk between switch 1 and switch 2?

- ☒ • E Port
- ☒ • Trunk Mode On
- ☐ • F Port
- ☐ • Trunk Mode Passive
- ☐ • N Port
- ☐ • Trunk Mode Active
- ☒ • NP Port
- ☒ • Trunk Mode Auto

- A. Option A
- B. Option B

- C. Option C
- D. Option D

Answer: A

NEW QUESTION 301

A network engineer must perform a backup and restore of the Cisco Nexus 5000 Series Switch configuration. The backup must be made to an external backup server. The only protocol permitted between the Cisco Nexus Series switch and the backup server is UDP. The backup must be used when the current working configuration of the switch gets corrupted. Which set of steps must be taken to meet these requirements?

- A. 1. Perform a running-config backup to an SFTP serve
- B. 2. Copy backup-config from the SFTP server to the running-config file.
- C. 1. Perform a startup-config backup to a TFTP serve
- D. 2. Copy backup-config from the backup server to the running-config file.
- E. 1. Perform a running-config backup to an SCP serve
- F. 2. Copy running-config in the boot flash to the running-config file.
- G. 1. Perform a startup-config backup to an FTP serve
- H. 2. Copy startup-config in the boot flash to the running-config file.

Answer: B

Explanation:

TFTP runs on UDP 69 = Is correct

NEW QUESTION 304

An engineer must configure remote authentication on a Cisco UCS system. The user password must be encrypted before it is sent to the authentication server. The company security policy requires the server to be based on an open standard. Drag and drop the UCS CLI AAA configuration commands from the left into the order in which they must be implemented on the right. Not all commands are used.

commit-buffer	step 1
create server <ip address>	step 2
set key	step 3
scope radius	step 4
scope tacacs+	step 5
scope security	

- A. Mastered
- B. Not Mastered

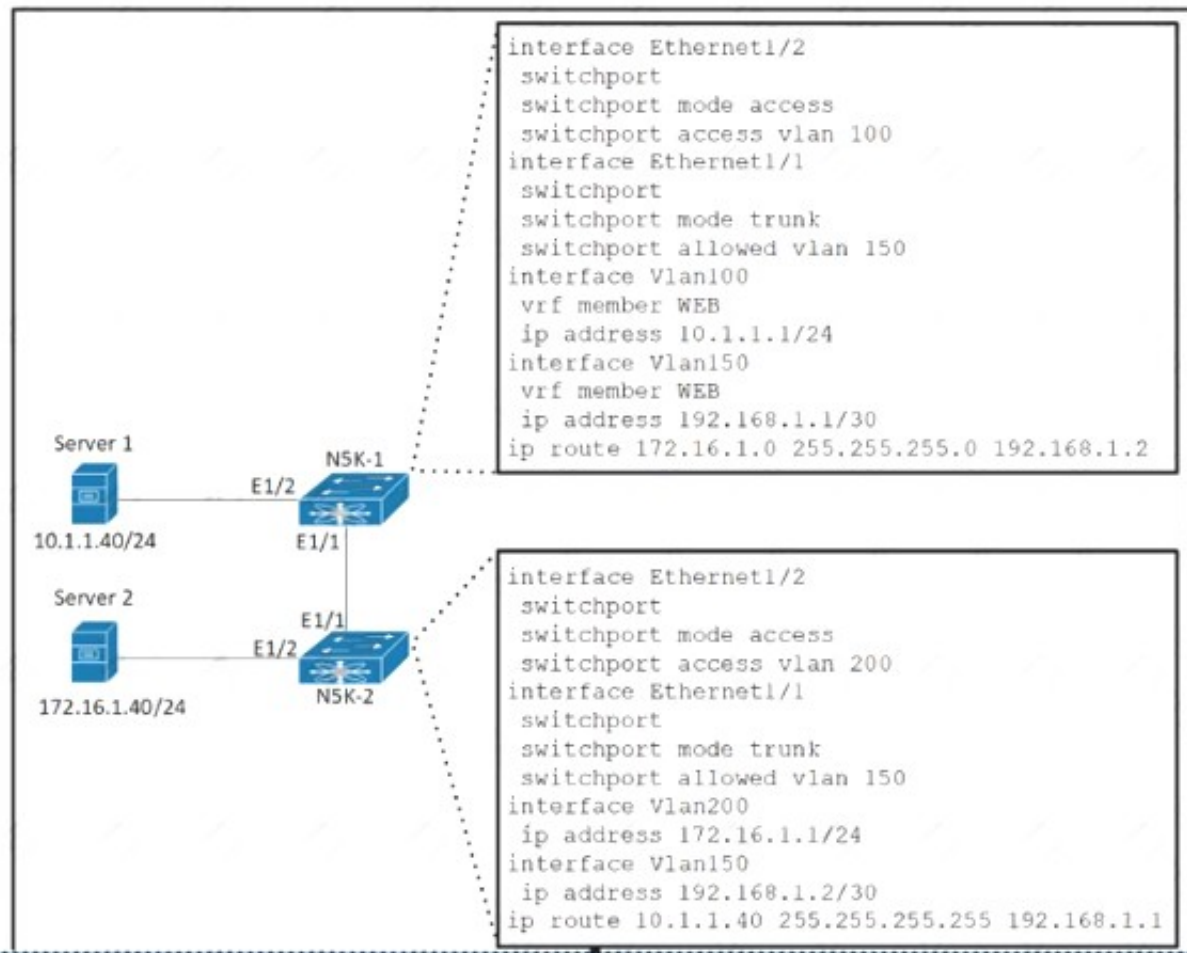
Answer: A

Explanation:

UCS-A# scope security
UCS-A /security # scope radius
UCS-A /security/radius # create server radiusserv7
UCS-A /security/radius/server* # set key
UCS-A /security/radius/server* # commit-buffer

NEW QUESTION 307

Refer to the exhibit.



The gateway of Server 1 is in the VLAN 100 SVI on N5K-1 and the gateway of Server 2 is in the VLAN 200 SVI on N5K-2. Server 1 must connect to Server 2 using unidirectional traffic. Which action accomplishes this requirement?

- A. Add VLAN 100 and 200 to the allowed VLANs list on the Ethernet 1/1 interface on N5K-1.
- B. Assign VRF WEB membership to interfaces VLAN 150 and 200 on N5K-2.
- C. Configure access VLAN 100 on interface Ethernet 1/2 on N5K-2.
- D. Create a static route in VRF WEB for the subnet of Server 2 on N5K-1.

Answer: B

NEW QUESTION 312

Refer to the exhibit.



Which backup operation type does not include the Preserve Identities feature?

- A. logical configuration
- B. system configuration
- C. full state
- D. all configuration

Answer: C

Explanation:

This checkbox remains selected for All Configuration and System Configuration. Full State backup does not have Preserve Identity feature.

All configs, logical and system backups seem to allow "preserve identities":

<https://books.google.pt/books?id=5VXUDwAAQBAJ&pg=PT699&lpg=PT699&dq=Preserve+Identities+feature+backup+ucs&source=bl&ots=daWxti4DV&sig=ACfU3U3X8UIPtS8EewzRIqTxqpyNVqOaNQ&hl=es419&sa=X&ved=2ahUKEwiYhtaxyMDqAhXFzIUkHXI8CzoQ6AEwC3oECAoQAQ#v=onepage&q=Preserve%20Identities%20feature%20backup%20ucs&f=false>

NEW QUESTION 316

Which two configuration settings are available in the in the cisco UCS firmware Auto sync server policy?

- A. User Notification
- B. User Acknowledge
- C. No Action
- D. Delayed Action
- E. Immediate Action

Answer: BC

Explanation:

https://www.cisco.com/c/en/us/td/docs/unified_computing/ucs/sw/firmware-mgmt/gui/2-2/b_GUI_Firmware_M Following are the values for the Firmware Auto Sync Server policy: • User Acknowledge—Firmware on the server is not synchronized until the administrator acknowledges the upgrade in the Pending Activities dialog box. • No Action—No firmware upgrade is initiated on the server.

NEW QUESTION 319

A storage engineer must configure zoning on a Cisco MDS 9000 Series switch. Drag and drop actions from the left into the order on right

zone name Zone1 vsan 4	Step 1
member pwwn 10:00:00:23:45:67:89:ac	Step 2
zoneset activate name Zoneset1 vsan 4	Step 3
member Zone1	Step 4
copy running-config startup-config	Step 5
zoneset name Zoneset1 vsan 4	Step 6

- A. Mastered
- B. Not Mastered

Answer: A

Explanation:

Graphical user interface, table Description automatically generated with medium confidence

```
Switch1# configure terminal
Enter configuration commands, one per line. End with CNTL/Z.
```

```
Switch1#(config)# vsan database
Switch1#(config-vsan-db)# vsan 100
Switch1#(config-vsan-db)# exit
```

```
Switch1#(config)# zone name zone1 vsan 100
Switch1#(config-zone)# member pwwn 11:11:11:11:11:11:1a
Switch1#(config-zone)# member pwwn 11:11:11:11:11:11:1b
Switch1#(config-zone)# exit
```

```
Switch1#(config)# zoneset name setA vsan 100
Switch1#(config-zoneset)# member zone1
Switch1#(config-zoneset)# exit
```

```
Switch1#(config)# zoneset activate name setA vsan 100
Zoneset activation initiated. check zone status
Switch1#(config)# exit
```

```
Switch1# sh zoneset active vsan 100
zoneset name setA vsan 100
zone name zone1 vsan 100
pwwn 11:11:11:11:11:11:1a
pwwn 11:11:11:11:11:11:1b
Switch1#
```

https://www.cisco.com/c/en/us/td/docs/switches/datacenter/mds9000/sw/6_2/configuration/guides/fabric/nx-os/nx_os_fabric/zone.html

NEW QUESTION 322

A host EPG Client wants to talk to a webserver in EGP Web. A contract with default settings is defined between EPG Client and EPG Web, which allows TCP communication initiated by the client toward the webserver with TCP destination port 80. Which statement is true?

- A. If EPG Web is made a preferred group member, a contract between EPG Client and EPG Web is no longer required for the host in EPG Client to reach the webserver in EPG Web.
- B. If vzAny is configured to consume and provide a "deny all" contract, traffic between EPG Client and EPG Web is no longer allowed.
- C. The host in EPG Client is allowed to connect to TCP destination port 80 on the webserver in EPG Web. The webserver will not be allowed to initiate a separate

TCP connection to a host port with TCP source port 80.

D. The host in EPG Client is allowed to connect to TCP destination port 80 on the webserver in EPG Web. The webserver is allowed to initiate a separate TCP connection to a host port with TCP source port 80.

Answer: D

Explanation:

Apply Both Direction and Reverse Filter Port in the subject for the filter. These two options are by default enabled... This means that if the provider EPG initiates traffic toward the consumer EPG, the Cisco ACI fabric allows it for any destination ports if the source port is 80.

https://www.cisco.com/c/en/us/td/docs/switches/datacenter/aci/apic/sw/1-x/Operating_ACI/guide/

[b_Cisco_Operating_ACI/b_Cisco_Operating_ACI_chapter_01000.html](#) Reverse filter and apply in both directions is default.

If a filter allows traffic from any consumer port to a provider port (e.g. 8888), if reverse port filtering is enabled and the contract is applied both directions (say for TCP traffic), either the consumer or the provider can initiate communication. The provider could open up a TCP socket to the consumer using port 8888, whether the provider or consumer sent traffic first. https://www.cisco.com/c/en/us/td/docs/switches/datacenter/aci/apic/sw/1-x/Operating_ACI/guide/

[b_Cisco_Operating_ACI/b_Cisco_Operating_ACI_chapter_01000.html](#)

NEW QUESTION 326

An engineer needs to perform a backup of user roles and locales from Cisco UCS Manager to replicate the setting to a different fabric interconnect. The engineer wants to review the file before importing it to a target fabric interconnect. Which backup type must be selected to meet these requirements?

- A. all configuration
- B. system configuration
- C. logical configuration
- D. full state

Answer: B

Explanation:

https://www.cisco.com/c/en/us/td/docs/unified_computing/ucs/ucs-manager/GUI-User-Guides/Admin-Managem

- **System configuration**—An XML file that includes all system configuration settings such as usernames, roles, and locales. You can use the file generated from this backup to import these configuration settings to the original fabric interconnect or to a different fabric interconnect. You cannot use this file for a system restore.

NEW QUESTION 331

Which server policy is used to install new Cisco IMC software on a server?

- A. host firmware policy
- B. hypervisor firmware policy
- C. BIOS software policy
- D. Cisco IMC software policy

Answer: A

Explanation:

https://www.cisco.com/c/en/us/td/docs/unified_computing/ucs/ucs-manager/CLI-User-Guides/Firmware-

[Mgmt/4-0/b_UCSM_CLI_Firmware_Management_Guide_4-0/ b_UCSM_CLI_Firmware_Management_Guide_4-0_chapter_01.html#](#)

You can use host firmware packages by defining a host firmware policy as an attribute of a service profile template, which is an updating template. Any change made to the service profile template is automatically made to its instantiated service profiles. Subsequently, the servers associated with the service profiles are also upgraded in parallel with the firmware version.

Graphical user interface, text, application Description automatically generated

The Cisco UCS domains are categorized into domain groups in Cisco UCS Central for management purposes. You can manage firmware for each domain group separately at the domain group level or for all domain groups from the domain group root. Cisco UCS Central provides you the option to manage the following Cisco UCS domain firmware packages:

- **Capability Catalog**— One capability catalog per domain group. All Cisco UCS domains registered to a particular domain group will use the capability catalog defined in the domain group.
- **Infrastructure Firmware**— One infrastructure firmware policy per domain group . All Cisco UCS domains registered to a particular domain group will use the same Infrastructure firmware version defined in the domain group.
- **Host Firmware**— You can have more than one **host firmware policy** for the different host firmware components in a domain group. The Cisco UCS domains registered in the domain group will be able to choose any defined **host firmware policy** in the group. Cisco UCS Central provides you the option to upgrade the host firmware globally to all Cisco UCS domains in a domain group at the same time.



Note

For more information on managing firmware in Cisco UCS Central, see the Firmware Management chapters in the *Cisco UCS Central Administration Guide* and *Cisco UCS Central CLI Reference Manual*.

NEW QUESTION 332

An engineer must perform an initial configuration of VXLAN Tunnel End-Point functionality on the Cisco Nexus 9000 Series platform. All the necessary features are already enabled on the switch. Which configuration set must be used to accomplish this goal?

- ☐ NX9K(config)# interface loopback0
NX9K(config-if)# ip address 10.10.10.11/32
- ☐ NX9K(config)# interface overlay0
NX9K(config-if-overlay)# source-interface loopback0
- ☐ NX9K(config)# interface VLAN10
NX9K(config-if-nve)# source-interface loopback0
- ☐ NX9K(config)# interface loopback0
NX9K(config-if)# ip address 10.10.10.11/32
- ☐ NX9K(config)# interface tunnel1
NX9K(config-if)# tunnel source loopback0
- ☐ NX9K(config)# interface ethernet1/1
NX9K(config-if)# ip unnumbered loopback0
- ☐ NX9K(config)# interface loopback0
NX9K(config-if)# ip address 10.10.10.11/32
- ☐ NX9K(config)# interface nve1
NX9K(config-if-nve)# source-interface loopback0
- ☐ NX9K(config)# interface ethernet1/1
NX9K(config-if)# ip unnumbered loopback0
- ☐ NX9K(config)# interface loopback0
NX9K(config-if)# ip address 10.10.10.11/32
- ☐ NX9K(config)# interface VLAN10
NX9K(config-if)# ip unnumbered loopback0
- ☐ NX9K(config)# interface nve1
NX9K(config-if-nve)# source-interface loopback0

- A. Option A
- B. Option B
- C. Option C
- D. Option D

Answer: D

NEW QUESTION 336

An engineer must configure Cisco UCS Manager to accept only HTTPS connections that use TLS 1.2. The cipher security level must be high and the length of the keyring key value must be 2048 bits. Drag and drop the code snippets from the right onto the blanks in the code on the left to accomplish these goals. Not all commands are used.

```

scope security
  create keyring ciscokring
  set modulus 
  commit-buffer

scope system
  scope services
    enable https
    set https port 8443
    set https 
    set https cipher-suite-mode 
    set https ssl-protocol 

```

keyring ciscokring

high-strength

1024 bits

mod2048

tls1-2

secure

- A. Mastered
- B. Not Mastered

Answer: A

Explanation:

Graphical user interface, application Description automatically generated

NEW QUESTION 339

Which behavior defines streaming telemetry as a push model in Cisco devices?

- A. Monitoring clients are pulling data from the network to see real-time statistics
- B. JSON encoded telemetry data is transported using the gRPC protocol
- C. The network devices send data in JSON or GPB format to configured endpoints

D. Events and network changes generate telemetry data

Answer: D

Explanation:

<https://developer.cisco.com/docs/ios-xe/#!streaming-telemetry-quick-start-guide/streaming-telemetry>

NEW QUESTION 343

A network architect must redesign a data center on OSPFv2. The network must perform fast reconvergence between directly connected switches. Which two actions must be taken to meet the requirement? (Choose two)

- A. Configure all links on AREA 0.
- B. Implement a virtual link between the switches.
- C. Use OSPF point-to-point links only.
- D. Set low OSPF hello and DEAD timers.
- E. Enable BFD for failure detection.

Answer: CD

NEW QUESTION 345

An engineer must ensure fabric redundancy when implementing NPV mode on a Cisco MDS 9000 Series Switch. Which action enables fabric redundancy?

- A. Connect the NPV devices to multiple upstream switches.
- B. Add a port channel to upstream switches.
- C. Configure the NPV devices to use on external FLOGI database.
- D. Use TE ports to connect to upstream switches.

Answer: B

NEW QUESTION 350

Refer to the exhibit.

```
vlan 10
 fcoe vsan 10

interface ethernet 1/3
 spanning-tree port type edge trunk
 switchport mode trunk
 switchport trunk allowed vlan 1, 10
```

An engineer must configure FCoE on a Cisco Nexus switch. Which two command sets complete this configuration? (Choose two.)

- ☒ interface vfc 10
bind interface fcoe-vfc 1/3
no shut
- ☐ vsan database
vsan 10 interface ethernet 1/3
- ☒ interface fcoe 10
bind interface ethernet 1/3
no shut
- ☐ interface vfc 10
bind interface ethernet 1/3
no shut
- ☐ vsan database
vsan 10 interface vfc 10

- A. Option A
- B. Option B
- C. Option C
- D. Option D
- E. Option E

Answer: DE

Explanation:

```
switch# configure terminal

switch(config)# vsan database

switch(config-vsan)# vsan 2 interface vfc 4
```

This example shows how to bind a virtual Fibre Channel interface to an Ethernet interface:

```
switch# configure terminal

switch(config)# interface vfc 4

switch(config-if)# bind interface ethernet 1/4
```

https://www.cisco.com/c/en/us/td/docs/switches/datacenter/nexus5000/sw/fcoe/421_n1_1/b_Cisco_n5k_fcoe_config_gd_re_421_n1_1/Cisco_n5k_fcoe_config_gd_re_421_n1_1_chapter4.html

NEW QUESTION 351

Refer to the exhibit.

```
event manager applet local-backup
event cli match "copy running-config startup-config"
action 1 cli copy bootflash:/
current_config.txt
action 2 syslog msg Configuration saved and copied to
bootflash
action 3 event-default
```

A network engineer must create an EEM script that saves a copy of the running configuration to bootflash and writes a message to syslog when a user saves the configuration to a Cisco Nexus 9000 Series Switch. Which command completes the configuration set?

- A. running-config
- B. policy-default
- C. syslog-config
- D. event-default

Answer: A

NEW QUESTION 352

An engineer implements an ACI fabric and must implement microsegmentation of endpoints within the same IP subnet using a network-based attribute. The attribute mapping must allow IP subnet independence. Which attribute must be selected?

- A. MAC address
- B. Custom
- C. Tag
- D. IP

Answer: D

Explanation:

If you want to use a network-based attribute and classify IP addresses in the same subnet, you must use the MAC-based network attribute. IP-based microsegmented EPGs do not support classification for IP addresses in the same subnet.

https://www.cisco.com/c/en/us/td/docs/switches/datacenter/aci/apic/sw/3-x/virtualization/b_ACI_Virtualization_

NEW QUESTION 356

An engineer must use the Embedded Event Manager to monitor events that occur on a cisco Nexus 9000 series switch. An environment variable needs to be created so that several policies use the monitored events in their actions. The external email server is represented by IP address 10.10.10.10. which command sets the environment variable?

- A. N9k2(config)# event manager policy environment mailserver "10.10.10.10"
- B. N9k2# event manager environment mailserver "10.10.10.10"
- C. N9k2 (config-apple1)# environment mailserver "10.10.10.10"
- D. N9k2 (config)# event manager environment mailserver "10.10.10.10"

Answer: D

Explanation:

To set an Embedded Event Manager (EEM) environment variable, use the event manager environment command in global configuration mode. To disable an EEM environment variable, use the no form of this command. <https://www.cisco.com/c/en/us/td/docs/ios-xml/ios/eem/command/eem-cr-book/eem-cr-e1.html>

NEW QUESTION 360

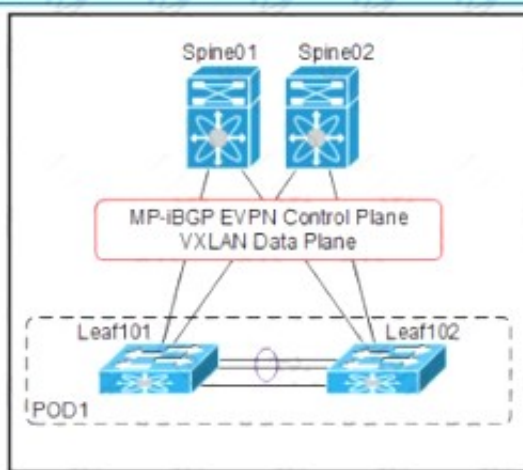
What is a benefit of independent resource scaling in Cisco HyperFlex hybrid architecture?

- A. flexible expansion of compute, caching, and capacity
- B. remote booting of converged servers
- C. multivendor converged node hardware support
- D. support for compute nodes with third-party storage

Answer: D

NEW QUESTION 363

Refer to the exhibit.



```
SPINE-01#show run pim
ip pim rp-address 10.255.0.100 group-list 225.0.0.0/8
ip pim bsr rp-candidate loopback1 group-list 225.0.0.0/8
ip pim ssm range 232.0.0.0/8
ip pim anycast-rp 10.255.0.100 10.10.0.1
ip pim anycast-rp 10.255.0.100 10.10.0.2
!
!
SPINE-01#show run interface loopback1
interface loopback1
ip router ospf 1 area 0.0.0.0
ip pim sparse-mode
```

An engineer must implement VXIAN with anycast gateway. To accomplish this, an engineer must set up PIM Source-Specific Multicast for host reachability. Which IP address must be applied to interface loopback1 to accomplish this goal?

- A. 255.0.0.1/8
- B. 255.0.100
- C. 10.10.0.1/32
- D. 10.10.0.2/32

Answer: B

NEW QUESTION 368

Refer to the exhibit.

```
1.130599 192.168.254.1 -> 192.168.254.13 TCP 60 29652 > ssh [ACK] Seq=1 Ack=53
Win=32449 Len=0
1.136261 00:8e:73:a2:41:0e -> Spanning-tree-(for-bridges)_00 STP 60 Conf. Root =
8192/10/ec:e1:a9:df:6c:80 Cost = 22 Port = 0x800e
1.373417 192.168.254.13 -> 192.168.254.1 SSH 106 Encrypted response packet len=52
1.570377 192.168.254.1 -> 192.168.254.13 TCP 60 29652 > ssh [ACK] Seq=1 Ack=105
Win=32786 Len=0
1.815558 192.168.254.13 -> 192.168.254.1 SSH 106 Encrypted response packet len=52
2.021840 192.168.254.1 -> 192.168.254.13 TCP 60 29652 > ssh [ACK] Seq=1 Ack=157
Win=32773 Len=0
2.525173 192.168.254.13 -> 192.168.254.1 SSH 106 Encrypted response packet len=52
2.731382 192.168.254.1 -> 192.168.254.13 TCP 60 29652 > ssh [ACK] Seq=1 Ack=209
Win=32760 Len=0
2.947365 192.168.254.13 -> 192.168.254.1 NTP 90 NTP Version 2, client
2.947623 192.168.254.1 -> 192.168.254.13 NTP 90 NTP Version 2, server
3.138157 00:8e:73:a2:41:0e -> Spanning-tree-(for-bridges)_00 STP 60 Conf. Root =
8192/10/ec:e1:a9:df:6c:80 Cost = 22 Port = 0x800e
3.139400 192.168.254.13 -> 192.168.254.1 SSH 106 Encrypted response packet len=52
3.270728 192.168.254.4 -> 239.255.70.83 UDP 166 Source port: cfs Destination port:
cfs
3.341123 192.168.254.1 -> 192.168.254.13 TCP 60 29652 > ssh [ACK] Seq=1 Ack=261
Win=32747 Len=0
3.835409 192.168.254.13 -> 192.168.254.1 SSH 106 Encrypted response packet len=52
4.041411 192.168.254.1 -> 192.168.254.13 TCP 60 29652 > ssh [ACK] Seq=1 Ack=313
Win=32734 Len=0
4.535284 192.168.254.13 -> 192.168.254.1 SSH 106 Encrypted response packet len=52
4.741072 192.168.254.1 -> 192.168.254.13 TCP 60 29652 > ssh [ACK] Seq=1 Ack=365
Win=32721 Len=0
4.947308 192.168.254.13 -> 192.168.254.1 NTP 90 NTP Version 2, client
4.947519 192.168.254.1 -> 192.168.254.13 NTP 90 NTP Version 2, server
5.139627 00:8e:73:a2:41:0e -> Spanning-tree-(for-bridges)_00 STP 60 Conf. Root =
8192/10/ec:e1:a9:df:6c:80 Cost = 22 Port = 0x800e
5.140867 192.168.254.13 -> 192.168.254.1 SSH 106 Encrypted response packet len=52
```

Cisco Fabric Services is enabled in the network. Which type of IP address is used by the Cisco Fabric Services protocol?

- A. IPv4 unicast address
- B. IPv4 multicast address
- C. IPv4 gateway address
- D. IPv4 anycast address

Answer: B

NEW QUESTION 373

An engineer is automating a Cisco Nexus 9000 Series Switch using the NX-OS API. Which code snippet creates a local user called "tacuser" with an expiration date of 22 November?

A)

☐ POST http://10.91.12.14/api/mo/sys/userext.json

```
{
  "aaaUserEp": {
    "children": [
      {
        "aaaUser": {
          "attributes": {
            "allowExpired": "no",
            "expiration": "2021-11-22T00:00:00.000+00:00",
            "expires": "yes",
            "name": "tacuser",
            "pwd": "AKw47PS3:g4M410:F501",
            "pwdEncryptType": "clear"
          }
        }
      }
    ]
  }
}
```

B)

☐ GET http://10.12.14.91/api/mo/sys/userext/user-tacuser.json

```
{
  {
    "aaaUserEp": {
      "attributes": {
        "childAction": "add",
        "dn": "sys/userext",
        "lcOwn": "local",
        "modTs": "2021-11-22T00:00:00.000+00:00",
        "pwdSecureMode": "yes",
        "pwdStrengthCheck": "no",
        "status": "",
        "uid": "0"
      }
    }
  }
}
```

C)

○ HEAD http://10.14.91.12/api/policymgr/mo/uni/userext.json

```
{
  "aaaUser": {
    "name": "tacuser",
    "phone": "",
    "pwd": "H97NW894SDASgQL",
    "expire": "yes",
    "aaaUserDomain": {
      "description": "",
      "name": "all",
      "rn": "userdomain-all"
    }
  }
}
```

○ PUT http://10.91.14.12/api/policymgr/mo/uni/

```
{
  "aaaUser": {
    "email": "tacuser@cisco.com",
    "name": "tacuser",
    "createdAt": "2020-09-11T00:00:00.090210Z",
    "authorizations": {
      "authorizedZone": "VDC1",
      "expiresAt": "2021-11-22T00:00:00.000+00:00",
      "authorizedByName": "OPS",
      "authorizedByEmail": "ops@company.com"
    }
  }
}
```

- A. Option A
- B. Option B
- C. Option C

Answer: A

NEW QUESTION 376

What is the benefit of adding Cisco HyperFlex Hardware Acceleration Cards to a HyperFlex deployment?

- A. offline encryption acceleration
- B. increased network throughput
- C. GPU acceleration
- D. Increased compression efficiency

Answer: D

Explanation:

- [Additional Information on HyperFlex Hardware Acceleration Cards](#)

Overview of HyperFlex Hardware Acceleration Cards

This chapter provides details for installation, post-installation, and troubleshooting of HyperFlex Hardware Acceleration Cards (PID: HX-PCIE-OFFLOAD-1) on HyperFlex nodes and for configuring your initial cluster. **These cards provide improved performance and compression efficiency for most storage workloads.**



Note

An HXDP-P Enterprise license is required for installing and configuring HyperFlex Hardware Acceleration Cards.

https://www.cisco.com/c/en/us/td/docs/hyperconverged_systems/HyperFlex_HX_DataPlatformSoftware/Installation_VMware_ESXi/3_5/b_HyperFlexSystems_Installation_Guide_for_VMware_ESXi_3_5/b_HyperFlexSystems_Installation_Guide_for_VMware_ESXi_3_5_chapter_01100.html#:~:text=Overview%20of%20HyperFlex%20Hardware%20Acceleration%20Cards,-This%20chapter%20provides&text=These%20cards%20provide%20improved%20performance%20and%20compression%20efficiency%20for%20most%20storage%20workloads.

NEW QUESTION 378

An engineer must configure a monitoring solution for a Cisco Nexus 9000 Series Switch based data center. The solution must provide real-time insight into the network health with subscription-based monitoring. The monitoring must be initiated from the client side, and the data must be sent via encryption. Which configuration steps complete the configuration?

- ☐ Set the telemetry feature on the Nexus switch.
Specify a certificate for telemetry transport.
Configure a sensor group and destination.
- ☒ Enable GRPC on the Nexus switch.
Generate a certificate.
Configure gNMI inputs in Telegraf and output to InfluxDB.
- ☐ Configure Grafana on the Nexus switch.
Specify the logging certificate.
Enable syslog level 7 export to Grafana.
- ☐ Activate SNMPv3 on the Nexus switch.
Set the globalEnforcePriv parameter.
Configure an SNMP agent to poll information.

- A. Option A
- B. Option B
- C. Option C
- D. Option D

Answer: A

NEW QUESTION 379

An engineer needs a utility to translate traditional Nexus CLI inputs and generate Python code using XML and JSON message formats. The solution needs to be available on a Nexus 7700 series switch. Which utility should be used?

- A. NX-OS JSON-RPC
- B. NX-API Sandbox
- C. Guest Shell for NX-OS
- D. Open NX-OS

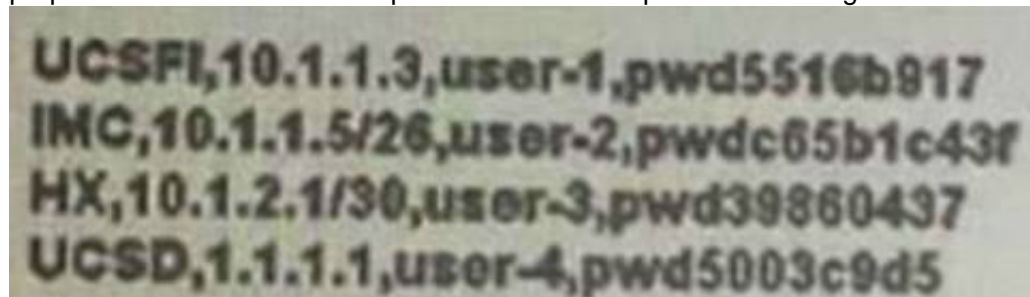
Answer: B

Explanation:

<https://developer.cisco.com/docs/nx-os/#!nx-api-cli-developer-sandbox>

NEW QUESTION 384

An engineer configures an intersight virtual application and must claim over 200 targets. The engineer starts the Claim target procedure. The engineer has prepared this initial comma-separated value file to provision the targets:



Which Information must be included In the comma-separated value flit to provision the targets?

- A. FQON, AD name, IP address, email
- B. location, address, nam
- C. password
- D. certificate, user name, passwor
- E. email
- F. target type, hostname or P address, user name, password

Answer: A

NEW QUESTION 385

An engineer must allow communication between the APIC controller and an OpenStack OpFlex agent. The agent is running on a compute node directly plugged to a Cisco ACI leaf switch. The engineer must enable and extend Infra VLAN on the port facing the compute and extend the Infra VLAN to the host. Which action must be taken to meet these requirements?

- A. Enable the Infra VLAN on the Interface Profile policy
- B. Enable the Infra VLAN on the Attachable Access Entity Profile.
- C. Add the infra VLAN via the physical domain.
- D. Add the infra VLAN via the VMM domain.

Answer: C

NEW QUESTION 387

Refer to the exhibit.

An engineer must configure a Fibre Channel device alias named TEST for a device attached to port fc1/9 of a Cisco Nexus Series Switch. Which command set completes the configuration?

- A)


```
SITE-A-MDS-Fabric-A# configure terminal
SITE-A-MDS-Fabric-A (config)# device-alias database
SITE-A-MDS-Fabric-A (config-device-alias-db)# device-alias name TEST pwwn 50:00:14:42:d0:0c:f5:20
SITE-A-MDS-Fabric-A (config-device-alias-db)# device-alias commit
```

B)

```
SITE-A-MDS-Fabric-A# configure terminal
SITE-A-MDS-Fabric-A (config)# device-alias database
SITE-A-MDS-Fabric-A (config-device-alias-db)# device-alias name TEST pwwn 50:00:14:42:d0:0c:f5:20
SITE-A-MDS-Fabric-A (config-device-alias-db)# exit
```

C)

```
SITE-A-MDS-Fabric-A# configure terminal
SITE-A-MDS-Fabric-A (config)# device-alias database
SITE-A-MDS-Fabric-A (config-device-alias-db)# device-alias name TEST pwwn 50:00:14:40:47:b0:0c:f5
SITE-A-MDS-Fabric-A (config-device-alias-db)# exit
```

D)

```
SITE-A-MDS-Fabric-A# device-alias database
SITE-A-MDS-Fabric-A (device-alias-db)# device-alias name TEST pwwn 50:00:14:40:47:b0:0c:f5
SITE-A-MDS-Fabric-A (config-device-alias-db)# device-alias commit
```

- A. Option A
- B. Option B
- C. Option C
- D. Option D

Answer: B

NEW QUESTION 388

Refer to the exhibit.

```
int fc1/1-2
switchmode rate dedicated
channel-group 100 force
no shut

int san-port-channel 100
switchport trunk allowed vsan 1
switchport trunk allowed vsan add 100
```

An engineer is connecting a Cisco MDS 9700 Series Multilayer Director to a downstream Cisco Nexus 5672UP switch. Which command set must be used to complete the configuration?

A)

```
int san-port-channel 100
switchport mode te
switchport trunk mode off
channel mode on
```

B)

```
int san-port-channel 100
switchport mode te
switchport trunk mode auto
channel mode on
```

C)


```
int san-port-channel 100
switchport mode e
switchport trunk mode on
channel mode active
```

D)

```
int port-channel 100
switchport mode e
switchport trunk mode on
channel mode active
```

- A. Option A
- B. Option B
- C. Option C
- D. Option D

Answer: A

NEW QUESTION 392

An engineer performs a Cisco UCS C480 ML M5 installation from a Cisco UCS Manager. As a part of the design, the server must perform an iSCSI boot from the storage array. Which configuration must be performed in the SAN settings in the root organization to satisfy that condition?

- A. Implement a WWPN pool
- B. Create a virtual iSCSI vNIC
- C. Enable a host SAN pool
- D. Create an IQN suffix pool

Answer: D

NEW QUESTION 393

An engineer is configuring a backup operation on the existing Cisco UCS environment using a logical configuration. Which configuration is expected to be saved by using this backup type?

- A. systems
- B. roles
- C. service profiles
- D. servers

Answer: C

Explanation:

Graphical user interface, text, application, email Description automatically generated

- [Import Operations](#)
- [Restoring the Configuration for a Fabric Interconnect](#)

Backup and Export Configuration

When you perform a backup through Cisco UCS Manager, you take a snapshot of all or part of the system configuration and export the file to a location on your network. You cannot use Cisco UCS Manager to back up data on the servers.

You can perform a backup while the system is up and running. The backup operation only saves information from the management plane. It does not have any impact on the server or network traffic.

Backup Types

You can perform one or more of the following types of backups through Cisco UCS Manager:

- **Full state**—A binary file that includes a snapshot of the entire system. You can use the file generated from this backup to restore the system during disaster recovery. This file can restore or rebuild the configuration on the original fabric interconnect, or recreate the configuration on a different fabric interconnect. You cannot use this file for an import.
- **All configuration**—An XML file that includes all system and logical configuration settings. You can use the file generated from this backup to import these configuration settings to the original fabric interconnect or to a different fabric interconnect. You cannot use this file for a system restore.
- **System configuration**—An XML file that includes all system configuration settings such as usernames, roles, and locales. You can use the file generated from this backup to import these configuration settings to the original fabric interconnect or to a different fabric interconnect. You cannot use this file for a system restore.
- **Logical configuration**—An XML file that includes all logical configuration settings such as service profiles, VLANs, VSANs, pools, and policies. You can use the file generated from this backup to import these configuration settings to the original fabric interconnect or to a different fabric interconnect. You cannot use this file for a system restore.

Considerations and Recommendations for Backup Operations

https://www.cisco.com/en/US/docs/unified_computing/ucs/sw/gui/config/guide/141/UCSM_GUI_Configuration_Guide_141_chapter43.html

NEW QUESTION 394

A network engineer must determine the cooling requirements for a Cisco UCS C-Series Rack Server. The server with PCIe cards is configured with a fan configuration policy. Which configuration should be used for the fan policy of the server?

- ☐ **server # scope chassis**
server /chassis # scope fan-policy
server /chassis/fan-policy # set fan-policy high-power
server /chassis/fan-policy* # commit
- ☐ **server # scope chassis**
server /chassis # scope fan-policy
server /chassis/fan-policy # set fan-policy balanced
server /chassis/fan-policy* # commit
- ☐ **server # scope server**
server /server # scope fan-policy
server /server /fan-policy # set fan-policy acoustic
server /server /fan-policy* # commit
- ☐ **server # scope server**
server /server # scope fan-policy
server /server /fan-policy # set fan-policy low-power
server /server /fan-policy* # commit

- A. Option A
- B. Option B
- C. Option C
- D. Option D

Answer: A

NEW QUESTION 395

An engineer is configuring HTTPS access to Cisco UCS Manager. The engineer created a keyring and created the certificate request for the keyring. Cisco UCS Manager continues to receive untrusted messages from a Firefox browser and a Chrome browser. Which action must be taken as the next step in the HTTPS access configuration?

- A. Create a trusted point
- B. Sign the certificate using the Cisco UCS Manager.
- C. Obtain a validated certificate from Cisco
- D. Install a trusted certificate in the browser store

Answer: A

NEW QUESTION 396

A network engineer must configure a Fibre Channel interface on the Cisco MDS 9000 Series Switch. The configuration must meet these requirements:

- The interface must be disabled when the bit errors threshold is exceeded
- Buffer-to-buffer credits must be set to the maximum value
- The interface must have full bandwidth allocated for its port group

Which command set configures a Fibre Channel interface that meets these requirements?

- A.
- ```
interface fc1/1
switchport bit-errors
switchport fcrxbbcredit 220 mode Fx
switchport rate-mode dedicated
```
- B.
- ```
interface fc1/1
switchport ignore bit-errors
switchport fcrxbbcredit 255 mode Fx
no switchport rate-mode
```
- C.
- ```
interface fc1/1
no switchport ignore bit-errors
switchport fcrxbbcredit 255 mode Fx
switchport rate-mode dedicated
```
- D.
- ```
interface fc1/1
no switchport bit-errors
switchport fcrxbbcredit 220 mode Fx
no switchport rate-mode
```

Answer: A

NEW QUESTION 398

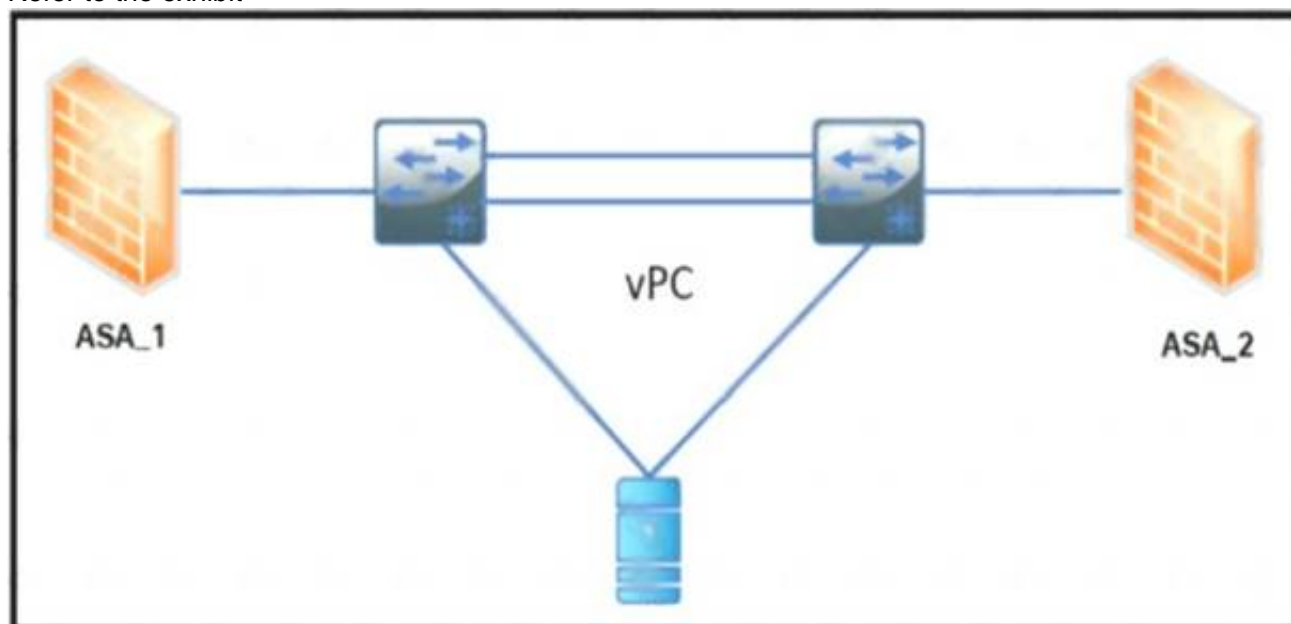
A network administrator must create a Linux container on a Cisco Nexus Series Switch. The container requires 10 percent of the CPU of the switch and 1024 MB of RAM to run successfully. Which task provides the necessary resources?

- A. Edit the container properties with the guestshell run command.
- B. Increase the compute resources with the guestshell resize command.
- C. Enable the Bash shell of the switch with the feature bash command.
- D. Modify resource allocation with the virtual-service resize command.

Answer: B

NEW QUESTION 400

Refer to the exhibit.



The ASA 1 acts as a Layer 3 gateway for all servers. The servers lose the gateway connectivity when the vPC peer links go down and the vPC keepalive remains up. Which action improves the high availability in the network?

- A. Create a static port channel with two links from each firewall to the switch
- B. Activate the vPC orphan-port suspend feature on the switch ports connected to the firewall
- C. Implement the IP reoVect feature on the vPC devices
- D. Enable the vPC peer gateway feature on the vPC devices

Answer: D

NEW QUESTION 402

An engineer is implementing OTV on a transport that supports multicast. The solution needs to meet the following requirements:

- Establish adjacency to the remote peer by using multicast.
- Enable OTV advertisements for VLAN 100 to the other site.

Which two commands should be configured to meet these requirements? (Choose two.)

- A. otv site-vlan 100
- B. otv data-group 232.2.2.0/28
- C. otv use-adjacency-server 172.27.255.94
- D. otv extend-vlan 100
- E. otv control-group 232.1.1.1

Answer: DE

Explanation:

https://www.cisco.com/c/dam/en/us/products/collateral/switches/nexus-7000-series-switches/guide_c07-728315

https://www.cisco.com/c/en/us/td/docs/switches/datacenter/sw/nx-os/OTV/config_guide/b_Cisco_Nexus_7000_

NEW QUESTION 405

Refer to the exhibit.

```
NEXUS# configure terminal
NEXUS# locator-led fex 100
NEXUS(config)# feature fex
NEXUS(config)# fex 100
NEXUS(config-fex)# type N2232TM
NEXUS(config-fex)# serial JAF1427BQLG
NEXUS(config)# interface ethernet 1/24-32
NEXUS(config-if)# switchport
NEXUS(config-if)# switchport mode fex-fabric
NEXUS(config-if)# fex associate 100
NEXUS(config-if)# no shutdown

NEXUS # show fex 100 detail
FEX: 100 Description: FEX0100 state: Online
  FEX version: 5.0(2)N1(1) [Switch version: 5.0(2)N1(1)]
  FEX Interim version: 5.0(2)N1(0.205)
  Switch Interim version: 5.0(2)N1(0.205)
  Extender Model: N2K-C2232TM, Extender Serial: JAF1427BQLG
  Part No: 73-13373-01
  Card Id: 132, Mac Addr: 68:ef:bd:62:2a:42, Num Macs: 64
  Module Sw Gen: 21 [Switch Sw Gen: 21]
  post level: complete
  pinning-mode: static    Max-links: 1
  Fabric port for control traffic: Eth1/29
  Fabric interface state:
    Eth1/25 - Interface Up. State: Active
    Eth1/26 - Interface Up. State: Active
    Eth1/27 - Interface Up. State: Active
    Eth1/28 - Interface Up. State: Active
    Eth1/29 - Interface Up. State: Active
    Eth1/30 - Interface Up. State: Active
    Eth1/31 - Interface Up. State: Active
    Eth1/32 - Interface Up. State: Active
```

An engineer must distribute all the host ports to use all eight configured FEX uplinks. The solution must minimize disruption if an uplink fails Which action accomplishes this objective?

- A. Set the pinning max-links value to 8
- B. Statically assign each host interface to a fabric uplink
- C. Change the supported FEX type
- D. Configure the eight uplinks in a port channel

Answer: D

Explanation:

Traffic disruption should be minimised when an uplink fails. If pinning was used and an uplink failed, then traffic associated with the failed link would be disrupted until it could be re-routed. Using a port-channel is much less disruptive.

NEW QUESTION 406

An administrator is implementing DCNM so that events are triggered when monitored traffic exceeds the configured present utilization threshold. The requirement is to configure a maximum limit of 39860437 bytes that applies directly to the statistics collected as a ratio of the total link capacity. Which DCNM performance monitoring configuration parameter must be implemented to achieve this result?

- A. Absolution Values
- B. Baseline
- C. Util%
- D. Per port Monitoring

Answer: A

NEW QUESTION 409

An engineer has a primary fabric that is named UCS-A and a secondary fabric that is named UCS-B. A certificate request that has a subject name of sjc2016 for a keyring that is named kr2016 needs to be created. The cluster IP address is 10.68.68.68.

Which command set creates this certificate request?

- A. UCS-A # scope keyring kr2016UCS-A /keyring # create certreq 10.68.68.68 sjc2016UCS-A /keyring* # commit-buffer
- B. UCS-B # scope keyring kr2016UCS-B /keyring # create certreq ip 10.68.68.68 subject-name sjc2016UCS-B /keyring* # commit-both
- C. UCS-B# scope securityUCS-B /security # scope keyring kr2016UCS-B /security/keyring # set certreq 10.68.68.68 sjc2016UCS-B /security/keyring* # commit-both
- D. UCS-A# scope securityUCS-A /security # scope keyring kr2016UCS-A /security/keyring # create certreq ip 10.68.68.68 subject-name sjc2016UCS-A /security/keyring* # commit-buffer

Answer: D

Explanation:

https://www.cisco.com/c/en/us/td/docs/unified_computing/ucs/ucs-manager/CLI-User-Guides/Admin-

Management/4-0/b_Cisco_UCS_Manager_CLI_Administration_Mgmt_Guide_4-0/
b_Cisco_UCS_Manager_CLI_Administration_Mgmt_Guide_4-0_chapter_0110.html

NEW QUESTION 412

An engineer must configure HTTPS secure management for Cisco UCS Manager using a key ring named kr2016 and a key size of 1024 bits. The environment consists of a primary fabric interconnect named UCS-A and a secondary fabric interconnect named UCS-B. Which command sequence must be used to accomplish this goal?

- ☐ UCS-B# scope security
UCS-B /security # keyring kr2016
UCS-B /security/keyring* # set mod mod1024
UCS-A /security/keyring* # commit-buffer
- ☐ UCS-A# scope security
UCS-A /security # create keyring kr2016
UCS-A /security/keyring* # set modulus mod1024
UCS-A /security/keyring* # commit-buffer
- ☐ UCS-B# scope security
UCS-B /security # create keyring kr2016
UCS-B /security/keyring* # set size mod1024
UCS-A /security/keyring* # commit-buffer
- ☐ UCS-A# scope security
UCS-A /security # keyring name kr2016
UCS-A /security/keyring* # set size 1024
UCS-A /security/keyring* # commit-buffer

- A. Option A
- B. Option B
- C. Option C
- D. Option D

Answer: B

Explanation:

https://www.cisco.com/en/US/docs/unified_computing/ucs/sw/cli/config/guide/1.4.1/CLI_Config_Guide_1_4_1

```
UCS-A# scope security
UCS-A /security # create keyring kr220
UCS-A /security/keyring* # set modulus mod1024
UCS-A /security/keyring* # commit-buffer
UCS-A /security/keyring #
```

NEW QUESTION 413

An engineer is performing an ISSU upgrade on the Cisco MDS 9000 Series Switch. What is the impact on the control plane of the switch?

- A. It remains down until the next reboot.
- B. It remains up throughout the update.
- C. It remains down for more than 80 seconds but less than 140 seconds.
- D. It is down for less than 80 seconds.

Answer: D

NEW QUESTION 417

An engineer implements SPAN configuration on an Nexus 5000 series switch. Which two commands are necessary to complete the SPAN session configuration? (Choose two)

```
N5K-Core# configure terminal
Enter configuration commands, one per line. End with CNTL/Z.
N5K-Core(config)# interface fc2/1
N5K-Core(config-if)# switchport speed 4000
N5K-Core(config-if)# no shutdown
N5K-Core(config)# interface fc2/2
N5K-Core(config-if)# no shutdown
N5K-Core(config)# monitor session 1
N5K-Core(config-monitor)# source interface fc2/1
N5K-Core(config-monitor)# destination interface fc2/2
N5K-Core(config-monitor)# no shutdown
```

- A. Configure the switchport monitor under interface fc2/2
- B. Configure the switchport mode SD under interface tc2/1.
- C. Configure switchport speed 4000 under interface fc2/2.
- D. Configure session type fc under monitor session 1.
- E. Configure the switchport mode SD under interface fc2/2.

Answer: CE

Explanation:

<https://www.cisco.com/c/en/us/td/docs/switches/datacenter/nexus5000/sw/configuration/guide/cli/CLIconfigurationGuide/SPAN.html>

NEW QUESTION 418

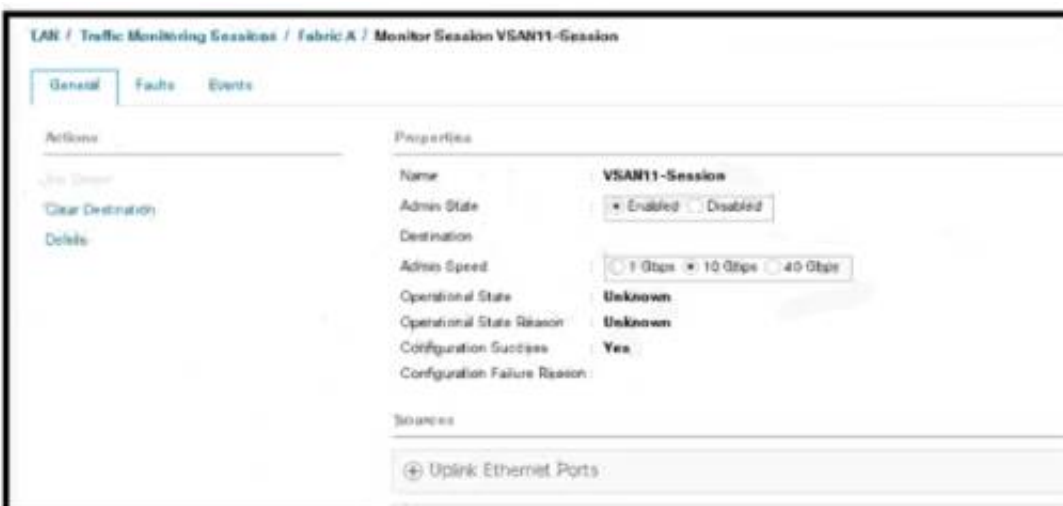
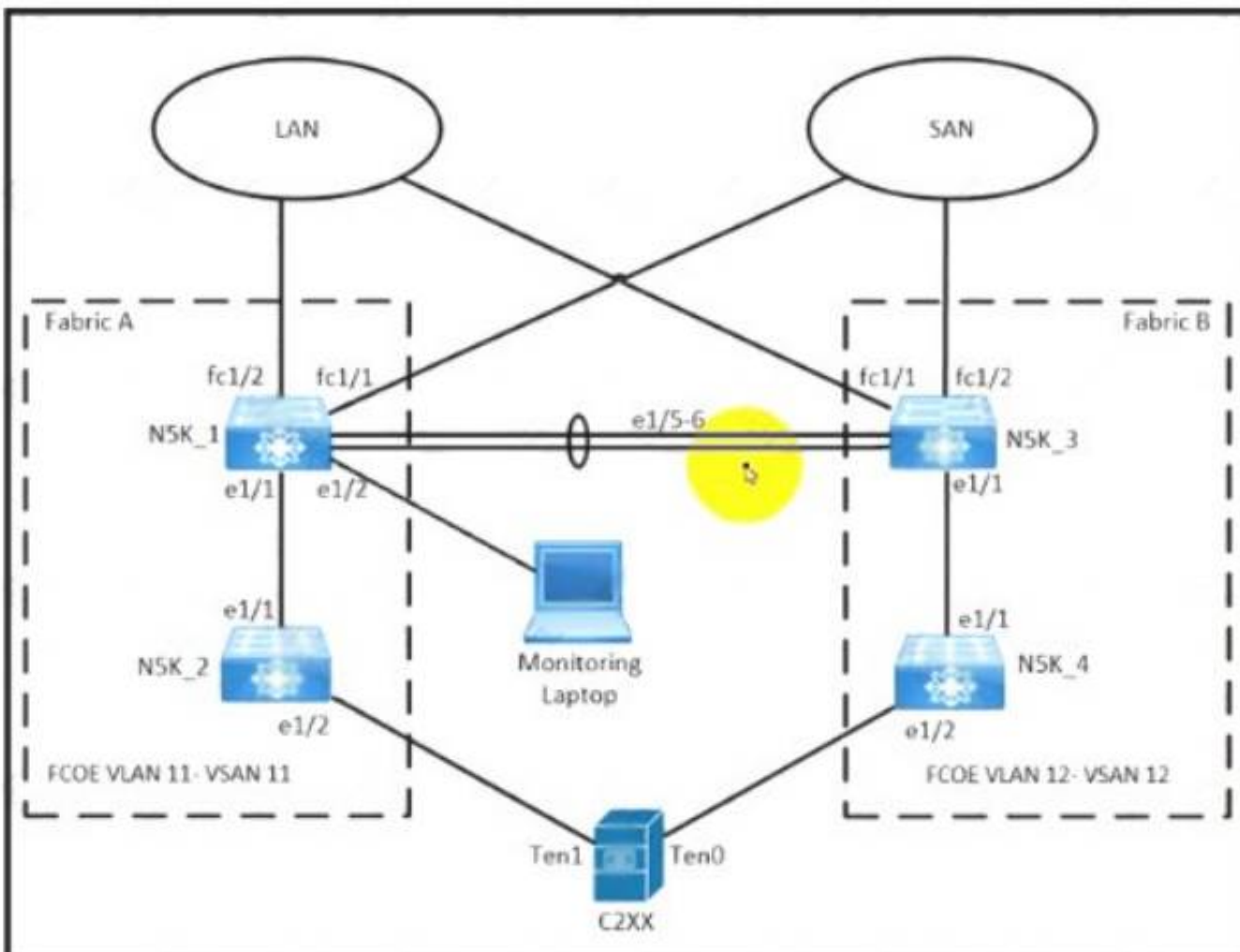
An engineer must perform a POAP deployment of a Cisco Nexus 9000 Series Switch. The switch must automatically receive its software image and configuration file upon power-on. Also, only UDP is permitted between the Nexus 9000 switch and the server that hosts the Cisco NX-OS system images. Which set of actions completes the configuration?

- A. Enable option 67. Define TFTP transfer protocol.
- B. Enable option 43. Define HTTP transfer protocol.
- C. Enable option 46. Define TFTP transfer protocol.
- D. Enable option 35. Define HTTP transfer protocol.

Answer: A

NEW QUESTION 421

Refer to the exhibit.



An engineer is creating a SPAN session to send a copy of all the Fabric-A VSAN 11 traffic on N5K_1 to the monitoring laptop. The configurator that is presented has already been applied to Cisco UCS Manager. Which action completes the configuration?

- A. Activate a NetFlow monitoring session
- B. Create a SAN traffic monitoring session
- C. Set VLAN 11 as the traffic destination
- D. Select VSAN 11 as the source of traffic.

Answer: C

NEW QUESTION 424

An engineer must configure Cisco Nexus 9000 Series Switches for Cisco UCS Director integration. The configuration must enable automated onboarding of the switches as they come online. For security purposes, the switches must have the bare minimum of connection methods enabled. The connection protocol must allow authentication through credentials. Which protocol must be configured on the switches to allow automated onboarding?

- A. SNMP
- B. Telnet
- C. SSH
- D. HTTPS

Answer: C

NEW QUESTION 426

An engineer troubleshoots an Fibre Channel deployment on a Cisco MDS 9000 Series Switch. What does this output indicate about port channel 1?

```
mds9509# show int po1
port-channel 1 is trunking
Hardware is Fibre Channel
Port WWN is 24:01:00:0d:ec:20:ba:00
Admin port mode is F, trunk mode is on
snmp link state traps are enabled
Port mode is TF
Port vsan is 1
Speed is 8 Gbps
Trunk vsans (admin allowed and active) (1,20)
Trunk vsans (up) (1,20)
Trunk vsans (isolated) ()
Trunk vsans (initializing) ()
5 minutes input rate 112 bits/sec, 14 bytes/sec, 0 frames/sec
5 minutes output rate 152 bits/sec, 19 bytes/sec, 0 frames/sec
25787798 frames input, 14359038212 bytes
0 discards, 0 errors
0 CRC, 0 unknown class
0 too long, 0 too short
23082 frames output, 1013152 bytes
0 discards, 0 errors
18 input OLS, 14 LRR, 29 NOS, 0 loop inits
17 output OLS, 0 LRR, 21 NOS, 0 loop inits
Member[1] : fc4/2
Member[2] : fc4/8
Interface last changed at Thu Mar 6 06:27:36 2020
```

- A. Port channel 1 is configured to be an ISL.
- B. Port channel 1 is configured to connect to a host bus adapter.
- C. Port channel 1 is configured to connect to an NPIV switch.
- D. Port channel 1 is configured to connect to an NPV switch.

Answer: A

NEW QUESTION 427

Refer to the exhibit.

Create Boot Policy

Name:

Description:

Reboot on Boot Order Change: ☐

Enforce vNIC/vHBA/ISCSI Name: ☒

Boot Mode: ☒ Legacy ☐ UEFI

WARNINGS:
 The type (primary/secondary) does not indicate a boot order presence.
 The effective order of boot devices within the same device class (LAN/Storage/ISCSI) is determined by PCIe bus scan order.
 If **Enforce vNIC/vHBA/ISCSI Name** is selected and the vNIC/vHBA/ISCSI does not exist, a config error will be reported.
 If it is not selected, the vNICs/vHBAs are selected if they exist, otherwise the vNIC/vHBA with the lowest PCIe bus scan order is used.

+ Local Devices

+ CIMC Mounted vMedia

+ vNICs

+ vHBAs

+ iSCSI vNICs

+ EFI Shell

Boot Order

+ - % Advanced Filter + Export Print

Name	Order	vNIC/vH	Type	LUN No	WWN	Slot No	Boot No
No data available							

Move Up Move Down Delete

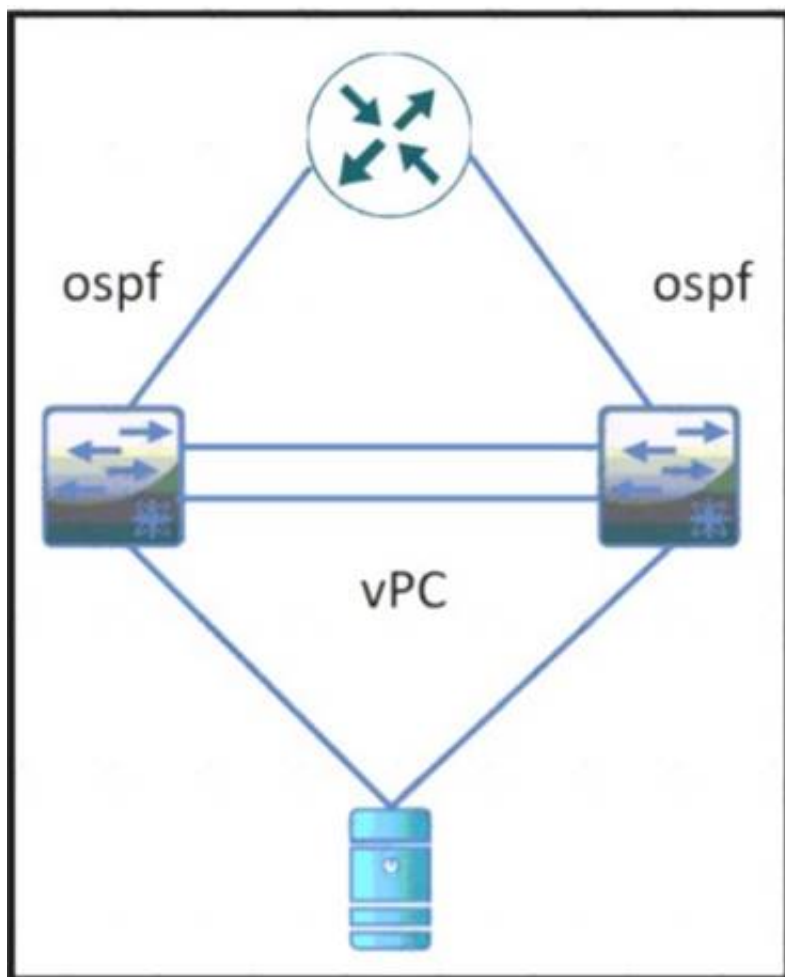
An engineer installs a new Cisco UCS B-Series server. The requirement is to install an operating system on a LUN that is provided by the Fibre Channel storage array. Which two steps must be configured in the boot policy to accomplish this goal? (Choose two.)

- A. Disable Enforce vNIC^HBA/ISCSI Name
- B. Add Local CD/DVD and SAN Boot.
- C. Configure a SAN Boot Target with a WWPN
- D. Set Boot Order to External USB and LAN Boot
- E. Create (SCSI VNICS and add Local LUN

Answer: AD

NEW QUESTION 431

Refer to the exhibit



During a vPC peer switch reload, there is packet loss between the server and the router Which action must be taken to prevent this behavior during future reloads?

- A. Set the routed uplink ports of the Cisco Nexus peers as orphans.
- B. Increase the vPC delay restore timer.
- C. Decrease the OSPF hello and dead interval timers.
- D. Disable vPC ARP synchronize on the vPC peers.

Answer: B

NEW QUESTION 435

What are two requirements when planning a Cisco HyperFlex All Flash standard cluster installation using three HX240c M5 servers? (Choose Two)

- A. If the Jumbo MTU option in the HyperFlex installer is enabled, then jumbo frames do not have to be enabled on the upstream switches.
- B. The hypervisors must be installed to Cisco FlexFlash SD cards.
- C. If the Jumbo MTU option in the HyperFlex installer is enabled, then jumbo frames must also be enabled on the upstream switches.
- D. The cluster deployment type must support a mix of HDD and SSD.
- E. The servers must be discovered, unassociated, and connected to each fabric interconnect.

Answer: CE

Explanation:

https://www.cisco.com/c/en/us/td/docs/hyperconverged_systems/HyperFlex_HX_DataPlatformSoftware/AdminGuide/3_5/b_HyperFlexSystems_AdministrationGuide_3_5/b_HyperFlexSystems_AdministrationGuide_3_5_chapter_011

NEW QUESTION 440

An engineer must integrate Cisco ACI with a VMware vSphere environment. The requirement is to use a VMware Distributed Virtual Switch and to assign the encapsulation VLAN of the EPG from the VLAN pool. Which configuration set accomplishes this goal?

- A. Create a VMM domain association under the EPGs Create a VLAN pool with static allocated VLANs.
- B. Create a physical domain association under the EPGs Create a VLAN pool with static allocated VLANs.
- C. Create a physical domain association under the EPG
- D. Create a VLAN pool with oVnarmc allocated VLANs
- E. Create a VMM domain association under the EPGs Create a VLAN pool with dynamic allocated VLANs.

Answer: D

NEW QUESTION 444

An engineer is implementing FCoE. Which aspect of DCBXP on a Cisco Nexus switch affects this implementation?

- A. It uses the Cisco Fabric Services protocol to exchange parameters between two peer links.
- B. It always is enabled on 10/100-Mbps native Ethernet ports.
- C. It provides the authentication of peers on the Cisco Nexus switch.
- D. It requires that LLDP transmit and LLDP receive are enabled on the FCoE interface.

Answer: D

Explanation:

The Data Center Bridging Exchange Protocol (DCBXP) is an extension of LLDP. It is used to announce, exchange, and negotiate node parameters between peers. DCBXP parameters are packaged into a specific DCBXP TLV. This TLV is designed to provide an acknowledgement to the received LLDP packet. DCBXP is enabled by default, provided LLDP is enabled. DCBXP is disabled on ports where LLDP transmit or receive is disabled.
https://www.cisco.com/c/en/us/td/docs/switches/datacenter/nexus5000/sw/layer2/503_n2_1/b_Cisco_n5k_layer2

NEW QUESTION 447

Refer to the exhibit.

```
Step 20 Enter no (no is the default) if you are satisfied with the configuration.

The following configuration will be applied:

switchname CiscoMDS
 interface mgmt0
   ip address 192.168.10.10
   subnetmask 255.255.255.0
   no shutdown
 ip default-gateway 192.168.10.1
 telnet server enable
 no ssh server enable
 no system default switchport shutdown
 system default switchport trunk mode on
 no zone default-zone permit vsan 1-4093
 zoneset distribute full vsan 1-4093
Would you like to edit the configuration? (yes/no) [n]: no

Step 21 Enter yes (yes is default) to use and save this configuration.

Use this configuration and save it? (yes/no) [y]: yes
```

An engineer is configuring a Cisco MDS 9000 Series Switch for the first time. After the initial setup process, the name server at IP 192.168.10.11 is missing from the configuration. Which set of actions completes the configuration?

- A. Enter no at step 21 and reinitialize the install
- B. Press the Esc key to access ROMMON mode.
- C. Enter no at step 21 and reload the switch
- D. Configure the advanced IP options.
- E. Enter yes at step 21 to edit the configuration
- F. Add the line dns-server 192.168.10.11.
- G. Enter yes at step 21 and log in
- H. Modify the startup configuration DNS

Answer: B

NEW QUESTION 451

AN engineer enters these commands while in EEM on a Cisco Nexus 9000 Series Switch. event manager applet Backup-config event timer watchdog time 1800 name timer event cli match "copy running-config startup-config" what is the result of applying this configuration?

- A. It saves the running configuration every 1800 seconds.
- B. It generates an error because no action is mentioned.
- C. It executes the copy running-config startup-config command.
- D. It blocks the copy running-config startup-config command.

Answer: B

Explanation:

<https://www.cisco.com/c/en/us/td/docs/switches/datacenter/nexus9000/sw/93x/system-management/b-cisco-nex>
 Graphical user interface, text, application, email Description automatically generated

Prerequisites for EEM

EEM has the following prerequisites:

- You must have network-admin user privileges to configure EEM.

Guidelines and Limitations for EEM

EEM has the following configuration guidelines and limitations:

- The maximum number of configurable EEM policies is 500.
- Action statements within your user policy or overriding policy should not negate each other or adversely affect the associated system policy.
- To allow a triggered event to process any default actions, you must configure the EEM policy to allow the default action. For example, if you match a CLI command in a match statement, you must add the event-default action statement to the EEM policy or EEM will not allow the CLI command to execute.
- When you configure an EEM policy action to collect **show tech** commands, make sure to allocate enough time for the **show tech** commands to complete before the same action is called again.

NEW QUESTION 455

Drag and drop the hyperflex characteristics from the left onto the appropriate. HyperFlex Node types on the right. Not all options are used.

uses only SSD drives for caching	Hybrid Node
contains HDDs for the capacity layer	
uses SSD drives or NVMe storage for caching	
has SSD drives for the capacity layer	All Flash Node
recommended for repeatable and sustainable high performance, especially for scenarios with a larger working set of data	
recommended for capacity-sensitive solutions, lower budgets, and fewer performance-sensitive applications	

- A. Mastered
- B. Not Mastered

Answer: A

Explanation:



NEW QUESTION 459

An engineer is implementing traffic monitoring for a server vNIC that is configured with fabric failover enabled. The requirement is for the traffic to be sent to an analyzer, even during a failure of one of the fabric interconnects. The analyzer is connected to unconfigured Ethernet ports on both fabric interconnects. Which configuration accomplishes this task?

- A. Create two traffic monitoring session with different names, one per fabric Connect the analyzer connected to FI-BI the destination for both monitoring sessions.
- B. Create two traffic monitoring session with different names, one per fabric.
- C. Connect an analyser on each FI as the destination for the monitoring session local to the FI.
- D. Create two traffic monitoring sessions with the same name, one per fabric Connect the analyze connected to FI-A as the destination for both monitoring sessions

Answer: A

NEW QUESTION 464

Which mroute state is created when Bidirectional PIM is deployed at a site?

- A. MVPN Type-6
- B. *,G
- C. MVPN Type-7
- D. S,G

Answer: B

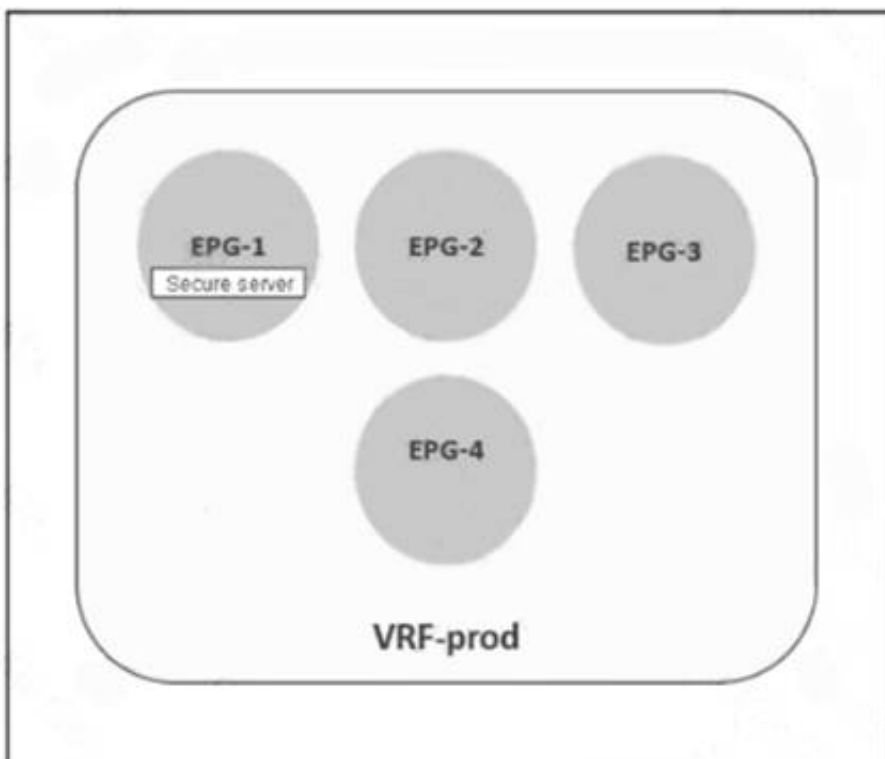
Explanation:

Bidirectional PIM has been invented for networks where we have many sources and receivers talking to each other. PIM Sparse mode RP builds 2 entries *, G and S, G but when we use PIM bidirectional mode, the RP will never build a S,G entry and, it only allow the *,G entry.

https://www.cisco.com/c/en/us/td/docs/ios-xml/ios/ipmulti_pim/configuration/xr-16-5/imc-pim-xr-16-5-book/im and <https://networklessons.com/multicast/multicast-bidirectional-pim>

NEW QUESTION 465

Refer to the exhibit.



A secure server that provides services to EPG-2 must be placed in EPG-1. The remaining EPGs—EPG-2, EPG-3, and EPG-4—must communicate without any contracts. Which set of actions accomplishes this goal?

- ☒ Exclude EPG-2, EPG-3, and EPG-4 from the preferred group.
Configure a contract between EPG-2 and EPG-3.
- ☐ Include EPG-2, EPG-3, and EPG-4 in the preferred group.
Configure a contract between EPG-1 and EPG-2.
- ☐ Include EPG-1 and EPG-2 in the preferred group.
Configure a contract between EPG-2 and EPG-3.
- ☐ Exclude EPG-2, EPG-3, and EPG-4 from the preferred group.
Configure a contract between EPG-1 and EPG-3.

- A. Option A
- B. Option B
- C. Option C
- D. Option D

Answer: B

NEW QUESTION 468

A network engineer needs a tool to automate the provisioning of Cisco UCS Service Profiles. The administrator has limited programming knowledge but is skilled with scripting tools. The tool must include existing support for Cisco UCS configuration. Additionally, the administrator will eventually use the solution to manage Cisco UCS C-Series Rack Servers. Which tool meets these requirements?

- A. Cisco DCNM
- B. Python scripts
- C. PowerShell
- D. Bash scripts

Answer: C

NEW QUESTION 471

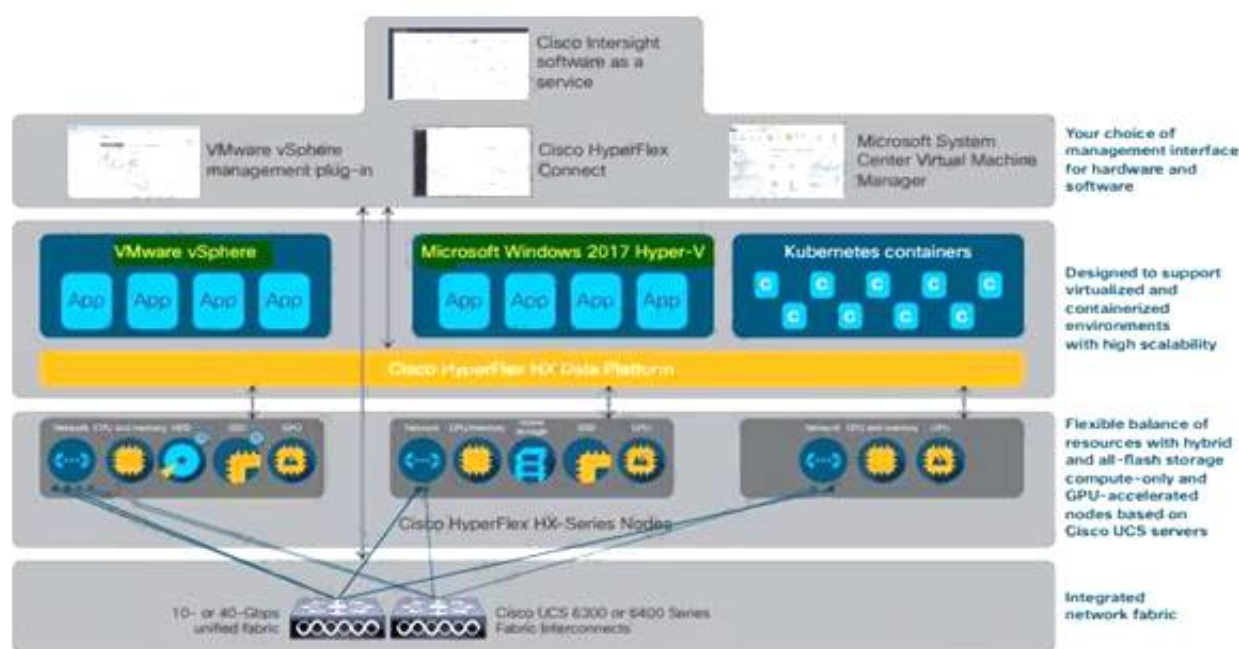
Which two hypervisors does Cisco HyperFlex support? (Choose two.)

- A. VMware vSphere
- B. Microsoft Hyper-V
- C. OpenStack
- D. Citrix XenServer
- E. RedHat KVM

Answer: AB

Explanation:

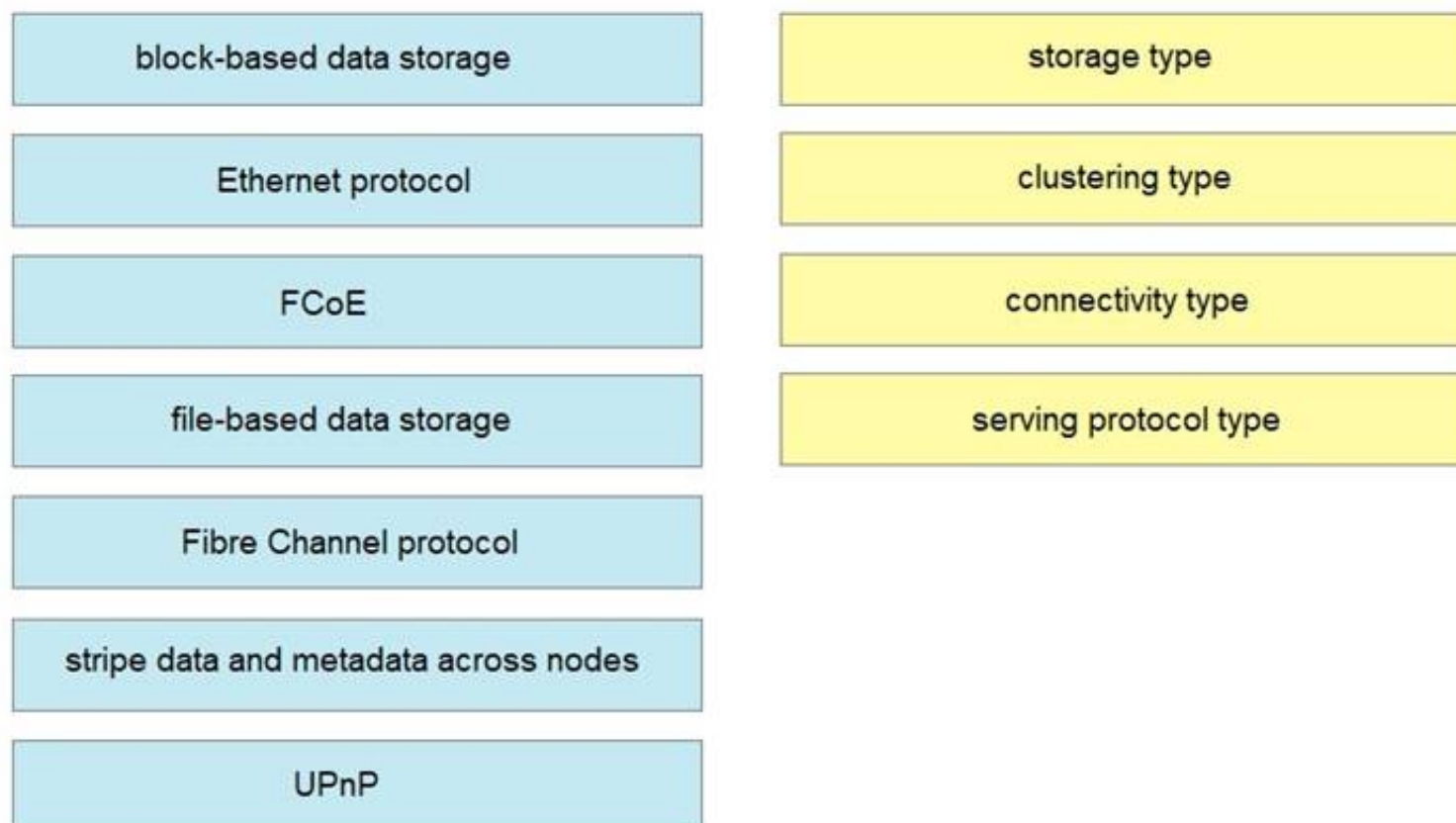
The Cisco HyperFlex platform is faster to deploy, simpler to manage, easier to scale, and ready to provide a unified pool of resources to power your business applications. You harness these resources with your choice of centralized management tools: Cisco Intersight™ software as a service, Cisco HyperFlex Connect, Microsoft System Center Virtual Machine Manager,



<https://www.cisco.com/c/dam/en/us/products/collateral/hyperconverged-infrastructure/hyperflex-hx-series/solution-overview-c22-736815.pdf>

NEW QUESTION 475

Drag and drop the NAS features from the left onto the NAS descriptions on the right. Not all features are used



- A. Mastered
- B. Not Mastered

Answer: A

Explanation:

A screenshot of a computer Description automatically generated with medium confidence
https://en.wikipedia.org/wiki/Network-attached_storage

NEW QUESTION 480

What is an advantage of using Ansible for automation as compared to puppet and chef?

- A. Ansible automates the enforcement of configuration settings.
- B. Ansible perform automation without installing a software agent on the target node.
- C. Ansible configures a set of CLI commands on a device by using NETCONF.
- D. Ansible abstracts a scenario so that set of configuration setting can be used across multiple operating systems.

Answer: B

NEW QUESTION 485

Which component is excluded by default from the host firmware package?

- A. network interface controller
- B. board controller
- C. storage controller
- D. local disk

Answer: D

NEW QUESTION 488

An engineer must configure OSPFv2 connectivity between a pair of Cisco Nexus switches. The connection between the switches must meet these requirements:

- Use unicast for updates.
- Use decentralized communication of updates.
- Full adjacency between switches.

Which configuration is needed to meet these requirements?

- A. interface with a type of p2p network
- B. stub area between the neighbors
- C. filter list between the neighbors
- D. virtual link between the neighbors

Answer: A

NEW QUESTION 491

A DevOps engineer must implement a bash script to query a REST API and return the available methods. Which code snippet completes the script?

```
curl -i -X --missing code-- http://api.cisco.com:8080/api -u admin:xT41M5P3X425VOE71NB5D
```

- A. DELETE
- B. TRACE
- C. POST
- D. OPTIONS

Answer: C

NEW QUESTION 495

An engineer must configure the order in which the server attempts to boot from available boot device types using Cisco Integrated Management Controller (Cisco IMC). The engineer must change the boot order configuration during the setup and apply the new requirements multiple times. The requirement is to change the Cisco IMC actual boot order so it is different from the configured boot order. Which setting accomplishes this goal?

- A. Enable the system to boot with the configured boot order.
- B. Set the boot configuration directly through BIOS.
- C. Configure the legacy and precision boot order to be mutually exclusive.
- D. Apply UEFI Secure Boot for a nonsupported operating system.

Answer: A

Explanation:

https://www.cisco.com/en/US/docs/unified_computing/ucs/c/sw/gui/config/guide/1.5/b_Cisco_UCS_C-series_G

NEW QUESTION 497

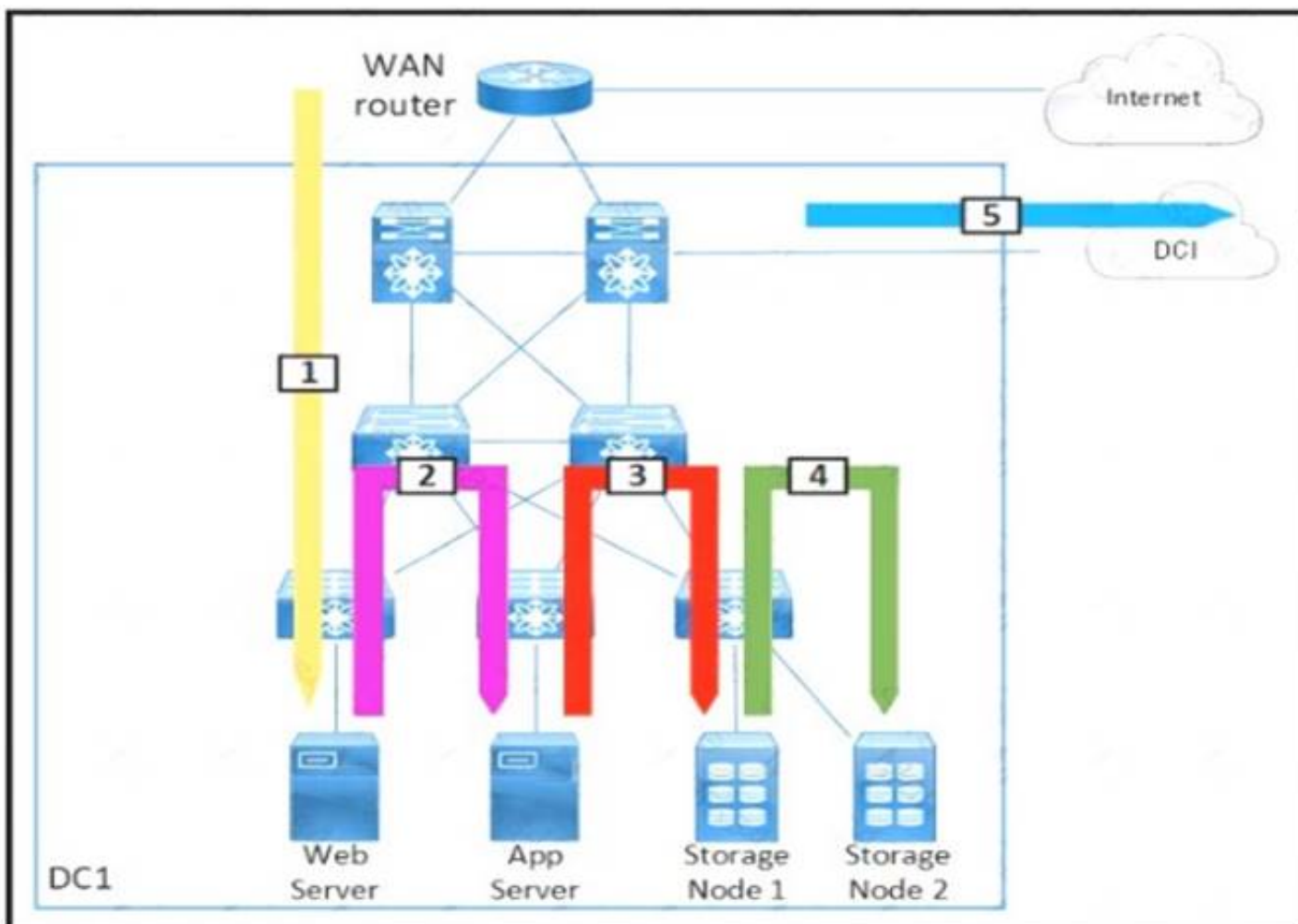
A bridge domain is being extended out of a Cisco ACI fabric. Between which of these components are policies used to identify the connectivity between Endpoint Groups and the external connection?

- A. an external bridge domain and an external routed domain
- B. internal contracts and external contracts
- C. internal EPGs and external EPGs
- D. L2Out and L3Out

Answer: D

NEW QUESTION 502

Refer to the exhibit.



Drag and drop each traffic flow type from the left onto the corresponding number on the right Not all traffic flow types are used

Inter-Data Center	1
East-West	2
North-West	3
North-South	4
South-West	5
Storage Traffic	
Storage Replication	

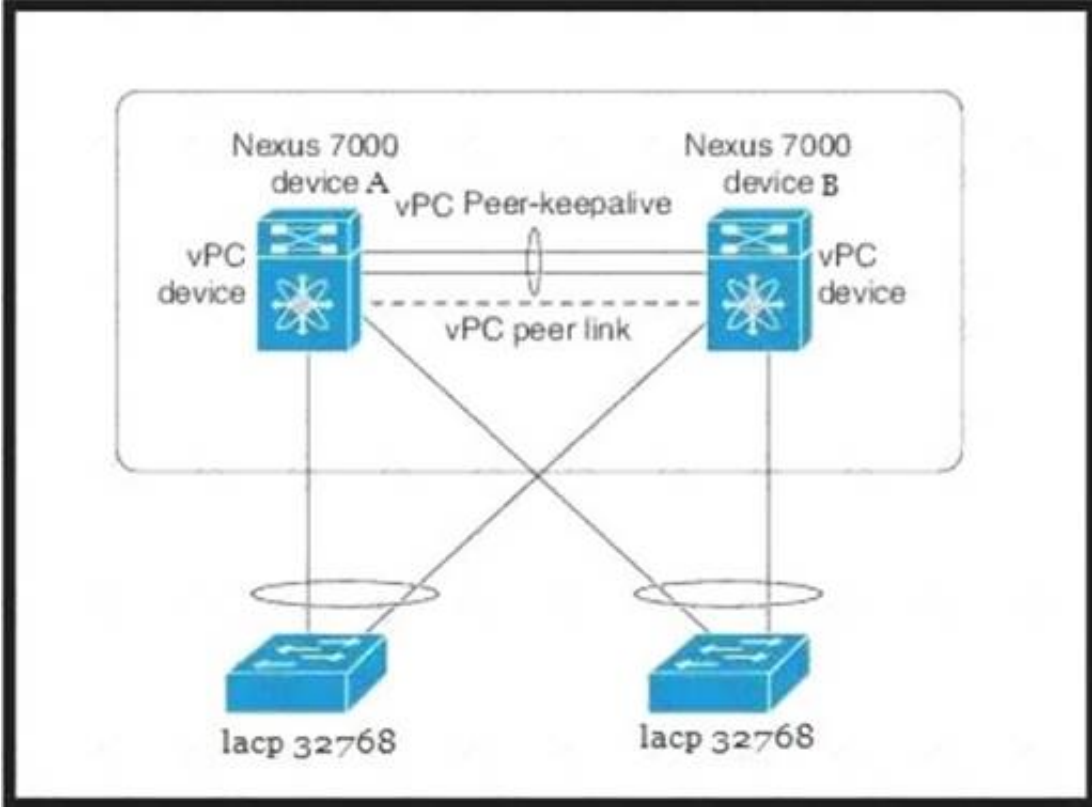
- A. Mastered
- B. Not Mastered

Answer: A

Explanation:
Table Description automatically generated

NEW QUESTION 506

Refer to the exhibit.



Which configuration ensure that the cisco Nexus 7000 series switches are the primary devices for LACP?

- A. N7K_A(config-vpc-domain)# role priority 1N7K_B(config-vpc-domain)# role priority 2
- B. N7K_A(config-vpc-domain)# system-priority 32768N7K_B(config-vpc-domain)# system-priority 32768
- C. N7K_A(config-vpc-domain)# system-priority 100N7K_B(config-vpc-domain)# system-priority 200
- D. N7K_A(config-vpc-domain)# system-priority 4000N7K_B(config-vpc-domain)# system-priority 4000

Answer: D

NEW QUESTION 507

An engineer configured an environment that contains the vPC and non-vPC switches. However, it was noticed that the downstream non-vPC switches do not receive the upstream vPC switch peers. Which vPC feature must be implement to ensure that vPC and non-vPC switches receive same STP bridge ID from the upstream vPC switch peers?

- A. vpc local role-priority 4000
- B. peer-switch
- C. system-mac 0123.4567.89ab
- D. peer-gateway

Answer: B

Explanation:

Peer-Switch feature allows the vPC peers use the same STP root ID as well as the same bridge ID.

NEW QUESTION 509

Refer to the exhibit.

```
switch# show radius-server
Global RADIUS shared secret:*****
retransmission count:5
timeout value:10
following RADIUS servers are configured:
  myradius.cisco.users.com:
    available for authentication on port:1812
    available for accounting on port:1813
  172.22.91.37:
    available for authentication on port:1812
    available for accounting on port:1813
    RADIUS shared secret:*****
  10.10.0.0:
    available for authentication on port:1812
    available for accounting on port:1813
    RADIUS shared secret:*****

switch# show radius-server groups
total number of groups:4
following RADIUS server groups are configured:
  group radius:
    server: all configured radius servers
  group Group1:
    server: Server3 on auth-port 1812, acct-port 1813
    server: Server5 on auth-port 1812, acct-port 1813
  group Group5:
```

A network engineer requires remote access via SSH to a Cisco MDS 9000 Series Switch. The solution must support secure access using the local user database when the RADIUS servers are unreachable from the switches. Which command meets these requirements?

- A. aaa authentication none
- B. aaa authentication login default group radius
- C. aaa authentication login default group local
- D. aaa authentication login default fallback error local

Answer: D

Explanation:

https://www.cisco.com/c/en/us/td/docs/switches/datacenter/mds9000/sw/6_2/configuration/guides/security/nx-o

Configuring Fallback Mechanism for Authentication

You can enable/disable fallback to local database in case the remote authentication is set and all AAA servers are unreachable (authentication error). The fallback is set to local by default in case of an authentication error. You can disable this fallback for both console and ssh/telnet login. Disabling this fallback will tighten the security of authentication.

The following steps explain the fallback mechanism for authentication:

Step 1 By default fallback will be enabled for both default/console login. The “sh run aaa all” command can be used to verify this.

Step 2 Disabling fallback will print a warning message.

The CLI syntax and behavior is as follows:

	Command	Purpose
Step 1	switch# confi g t switch(config)#	Enters configuration mode.
Step 2	switch(config)# show run aaa all aaa authentication login default fallback error local aaa authentication login console fallback error local	Displays the default fallback behavior.
Step 3	switch(config)# no aaa authentication login default fallback error local WARNING!!! Disabling fallback can lock your switch.	Disables the fallback to local database for authentication. Note Replace default with console in this command to disable fallback to console.

NEW QUESTION 513

Refer to the exhibit.

An engineer must set access to Cisco IMC. The access must be allowed by logging onto the https //datacenter local web page The configuration presented is on

the Cisco UCS C240 Series Server Which set of commands completes the configuration?

A)

```
Server# scope cimc
Server /cimc # scope network
Server /cimc/network # set vlan-enabled yes
Server /cimc/network # set vlan-id 10
Server /cimc/network # set vlan-priority 32
Server /cimc/network # set dns-use-dhcp-enabled yes
Server /cimc/network # commit
```

B)

```
Server# scope cimc
Server /cimc # scope network
Server /cimc/network # set dhcp-enabled yes
Server /cimc/network # set v4-addr 192.168.1.10
Server /cimc/network # set v4-netmask 255.255.255.0
Server /cimc/network # set v4-gateway 192.168.1.12
Server /cimc/network # commit
```

C)

```
Server# scope cimc
Server /cimc # scope network
Server /cimc/network # set dhcp-enabled yes
Server /cimc/network # set v4-addr 192.168.1.10
Server /cimc/network # set v4-netmask 255.255.255.0
Server /cimc/network # set preferred-dns-server 192.168.3.20
Server /cimc/network # commit
```

D)

```
Server# scope cimc
Server /cimc # scope network
Server /cimc/network # set vlan-enabled yes
Server /cimc/network # set vlan-id 10
Server /cimc/network # set vlan-priority 32
Server /cimc/network # set preferred-dns-server 192.168.3.20
Server /cimc/network # commit
```

- A. Option A
- B. Option B
- C. Option C
- D. Option D

Answer: C

NEW QUESTION 514

Which service profile is affected if the default host firmware policy in Cisco UCS Manager is changed?

- A. any service profile that has no host firmware policy defined
- B. any service profile that uses a user-created host firmware policy
- C. any service profile that is not in the root sub-org
- D. any service profile that uses the global-default host firmware policy

Answer: A

Explanation:

https://www.cisco.com/c/en/us/td/docs/unified_computing/ucs/ucs-manager/GUI-User-Guides/Firmware-Mgmt/3-1/b_UCSM_GUI_Firmware_Management_Guide_3_1/b_UCSM_GUI_Firmware_Management_Guide_3_1_chapter_011.html

NEW QUESTION 515

A network architect is asked to design and manage geographically distributed data centers across cities and decides to use a Multi-Site Orchestrator deployment. How many orchestrators should be deployed?

- A. 3
- B. 5
- C. 4

D. 2

Answer: A

Explanation:

<https://www.cisco.com/c/en/us/solutions/collateral/data-center-virtualization/application-centricinfrastructure/w>

NEW QUESTION 520

Port security is enabled on a Cisco MDS 9000 series Switch. Which statement is true?

- A. Cisco Fabric Services must be disabled before enabling port security.
- B. Port security can be enabled only globally and affects all VSANs.
- C. Auto-learning is always enabled automatically when port security is enabled.
- D. Any devices currently logged in must be added manually to the device databased.

Answer: C

Explanation:

https://www.cisco.com/c/en/us/td/docs/switches/datacenter/mds9000/sw/8_x/config/security/cisco_mds9000_security_config_guide_8x/configuring_port_security.html

- **Active database:** The database currently enforced by the switch. The port security feature requires all devices connecting to a switch to be part of the port security active database. The software uses this active database to enforce authorization.

About Auto-Learning

You can instruct the switch to automatically learn (auto-learn) the port security configurations over a specified period. This feature allows any switch in the Cisco MDS 9000 Family to automatically learn about devices and switches that connect to it. Use this feature when you activate the port security feature for the first time as it saves tedious manual configuration for each port. You must configure auto-learning on a per-VSAN basis. If enabled, devices and switches that are allowed to connect to the switch are automatically learned, even if you have not configured any port access.

When auto-learning is enabled, learning happens for the devices or interfaces that were already logged into the switch and the new devices or interfaces that need to be logged in. Learned entries on a port are cleaned up after you shut down that port if auto-learning is still enabled.

Learning does not override the existing configured port security policies. So, for example, if an interface is configured to allow a specific pWWN, then auto-learning will not add a new entry to allow any other pWWN on that interface. All other pWWNs will be blocked even in auto-learning mode.

No entries are learned for a port in the shutdown state.

When you activate the port security feature, auto-learning is also automatically enabled.



Note

If you activate port security feature, auto-learning gets enabled by default. You cannot re-activate port security until auto-learning is disabled or deactivate and activate again.

Port Security Activation

By default, the port security feature is not activated in any switch in the Cisco MDS 9000 Family.

By activating the port security feature, the following apply:

- Auto-learning is also automatically enabled, which means:
 - From this point, auto-learning happens for the devices or interfaces that were already logged into the switch and also for the new devices will login in future.
 - You cannot activate the database until you disable auto-learning.
- All the devices that are already logged in are learned and are added to the active database.
- All entries in the configured database are copied to the active database.

After the database is activated, subsequent device login is subject to the activated port bound WWN pairs, excluding the auto-learned entries. You must disable auto-learning before the auto-learned entries become activated.

When you activate the port security feature, auto-learning is also automatically enabled. You can choose to activate the port security feature and disable auto-learning.

NEW QUESTION 522

Which file service protocol allows the files to appear locally mapped to the client and provides view, store, and update capabilities on a remote Linux-based storage repository that also serves as a distributed file system standard for NAS?

- A. NFS
- B. FTP
- C. iSCSI
- D. IFS

Answer: D

NEW QUESTION 526

An engineer must design an automation solution for the Cisco ACI Fabric to speed up the deployment of logical network elements for tenant provisioning. When creating a solution, the engineer must keep in mind that the tool must support these requirements:

- Allow the rapid creation and removal of logical containers.
- Support the creation of custom modules and data structures.
- Be extensible with external libraries and modules.
- Allow rapid testing of code using an on-demand execution environment.

Which automation tool meets these requirements?

- A. YAML
- B. Chef
- C. SaltStack
- D. Python

Answer: B

NEW QUESTION 527

An engineer is implementing NPV mode on a Cisco MDS 9000 Series Switch. Which action must be taken?

- A. The FCNS database must be disabled in the fabric.
- B. A port channel must be configured to the upstream switch.
- C. All switches in the fabric must be Cisco MDS switches.
- D. NPIV must be enabled on the upstream switch.

Answer: D

Explanation:

https://www.cisco.com/c/en/us/td/docs/switches/datacenter/mds9000/sw/5_0/configuration/guides/int/nxos/cli_i

NEW QUESTION 531

A network engineer must implement RBAC on Cisco MDS 9000 Series Multilayer Switches. Drag and drop the Cisco MDS 9000 Series roles from the left onto the correct categories on the right.

san-operator

global-admin

server-admin

storage-admin

network-admin

network-operator

System Defined

User Defined

- A. Mastered
- B. Not Mastered

Answer: A

Explanation:

Graphical user interface Description automatically generated with low confidence
[https://www.cisco.com/c/en/us/td/docs/unified_computing/ucs/ucs-manager/GUI-User-Guides/Admin Management/3-1/b_Cisco_UCS_Admin_Mgmt_Guide_3_1/b_UCSM_Admin_Mgmt_Guide_chapter_01.html](https://www.cisco.com/c/en/us/td/docs/unified_computing/ucs/ucs-manager/GUI-User-Guides/Admin%20Management/3-1/b_Cisco_UCS_Admin_Mgmt_Guide_3_1/b_UCSM_Admin_Mgmt_Guide_chapter_01.html)
https://www.cisco.com/c/en/us/td/docs/switches/datacenter/mds9000/sw/8_x/config/security/cisco_mds9000_security_config_guide_8x/configuring_users_and_common_roles.html#con_1422305

NEW QUESTION 535

An engineer must configure a VDS port group using APIC policy. The requirements are for the frames to be mapped to a particular Layer 2 network and for the virtual machine assigned to the port group to receive all frames passed on the virtual switch. Which two settings must be used to meet these requirements? (Choose two.)

- A. forged transmits
- B. VMDirectPath
- C. port binding
- D. promiscuous mode

E. VLAN

Answer: CD

NEW QUESTION 537

.....

Thank You for Trying Our Product

We offer two products:

1st - We have Practice Tests Software with Actual Exam Questions

2nd - Questions and Answers in PDF Format

350-601 Practice Exam Features:

- * 350-601 Questions and Answers Updated Frequently
- * 350-601 Practice Questions Verified by Expert Senior Certified Staff
- * 350-601 Most Realistic Questions that Guarantee you a Pass on Your First Try
- * 350-601 Practice Test Questions in Multiple Choice Formats and Updates for 1 Year

100% Actual & Verified — Instant Download, Please Click
[Order The 350-601 Practice Test Here](#)