



Cisco

Exam Questions 300-115

Implementing Cisco IP Switched Networks

NEW QUESTION 1

A manager tells the network engineer to permit only certain VLANs across a specific trunk interface. Which option can be configured to accomplish this?

- A. allowed VLAN list
- B. VTP pruning
- C. VACL
- D. L2P tunneling

Answer: A

NEW QUESTION 2

Which statement about LLDP-MED is true?

- A. LLDP-MED is an extension to LLDP that operates between endpoint devices and network devices.
- B. LLDP-MED is an extension to LLDP that operates only between network devices.
- C. LLDP-MED is an extension to LLDP that operates only between endpoint devices.
- D. LLDP-MED is an extension to LLDP that operates between routers that run BGP.

Answer: A

NEW QUESTION 3

Which statement about using native VLANs to carry untagged frames is true?

- A. Cisco Discovery Protocol version 2 carries native VLAN information, but version 1 does not.
- B. Cisco Discovery Protocol version 1 carries native VLAN information, but version 2 does not.
- C. Cisco Discovery Protocol version 1 and version 2 carry native VLAN information.
- D. Cisco Discovery Protocol version 3 carries native VLAN information, but versions 1 and 2 do not.

Answer: A

NEW QUESTION 4

A network engineer notices inconsistent Cisco Discovery Protocol neighbors according to the diagram that is provided. The engineer notices only a single neighbor that uses Cisco Discovery Protocol, but it has several routing neighbor relationships. What would cause the output to show only the single neighbor?

- A. The routers are connected via a Layer 2 switch.
- B. IP routing is disabled on neighboring devices.
- C. Cisco Express Forwarding is enabled locally.
- D. Cisco Discovery Protocol advertisements are inconsistent between the local and remote devices.

Answer: A

NEW QUESTION 5

After configuring new data VLANs 1020 through 1030 on the VTP server, a network engineer notices that none of the VTP clients are receiving the updates. What is the problem?

- A. The VTP server must be reloaded.
- B. The VTP version number must be set to version 3.
- C. After each update to the VTP server, it takes up to 4 hours propagate.
- D. VTP must be stopped and restarted on the server.
- E. Another switch in the domain has a higher revision number than the server.

Answer: B

NEW QUESTION 6

After the recent upgrade of the switching infrastructure, the network engineer notices that the port roles that were once "blocking" are now defined as "alternate" and "backup." What is the reason for this change?

- A. The new switches are using RSTP instead of legacy IEEE 802.1D STP.
- B. IEEE 802.1D STP and PortFast have been configured by default on all newly implemented Cisco Catalyst switches.
- C. The administrator has defined the switch as the root in the STP domain.
- D. The port roles have been adjusted based on the interface bandwidth and timers of the new Cisco Catalyst switches.

Answer: A

NEW QUESTION 7

You have been tasked with configuring multilayer SwitchC, which has a partial configuration and has been attached to RouterC as shown in the topology diagram. You need to configure SwitchC so that Hosts H1 and H2 can successfully ping the server S1. Also SwitchC needs to be able to ping server S1.

Due to administrative restrictions and requirements you should not add/delete vlans or create trunk links. Company policies forbid the use of static or default routing. All routes must be learned via EIGRP 65010 routing protocol.

You do not have access to RouterC. RouterC is correctly configured. No trunking has been configured on RouterC.

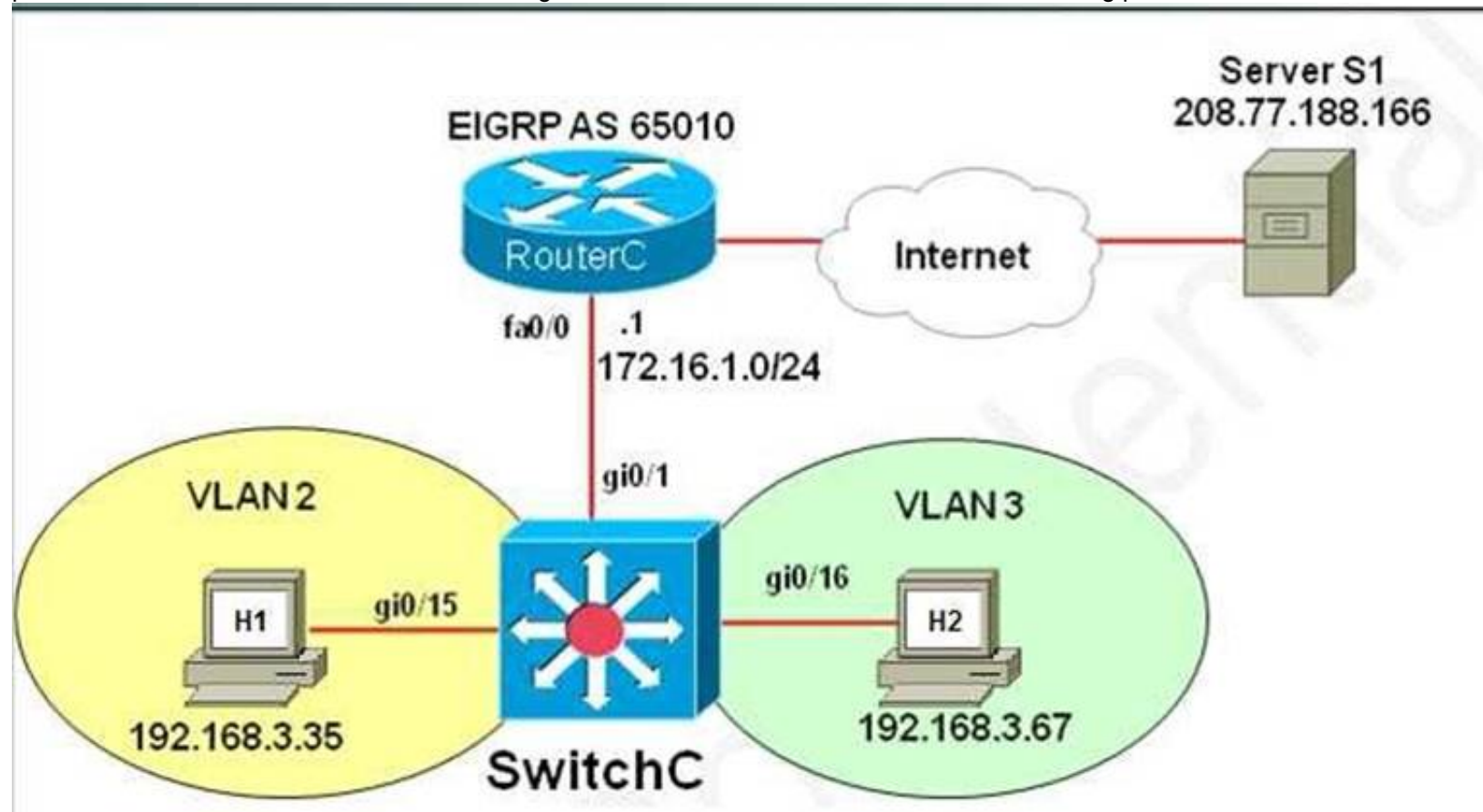
Routed interfaces should use the lowest host on a subnet when possible. The following subnets are available to implement this solution:

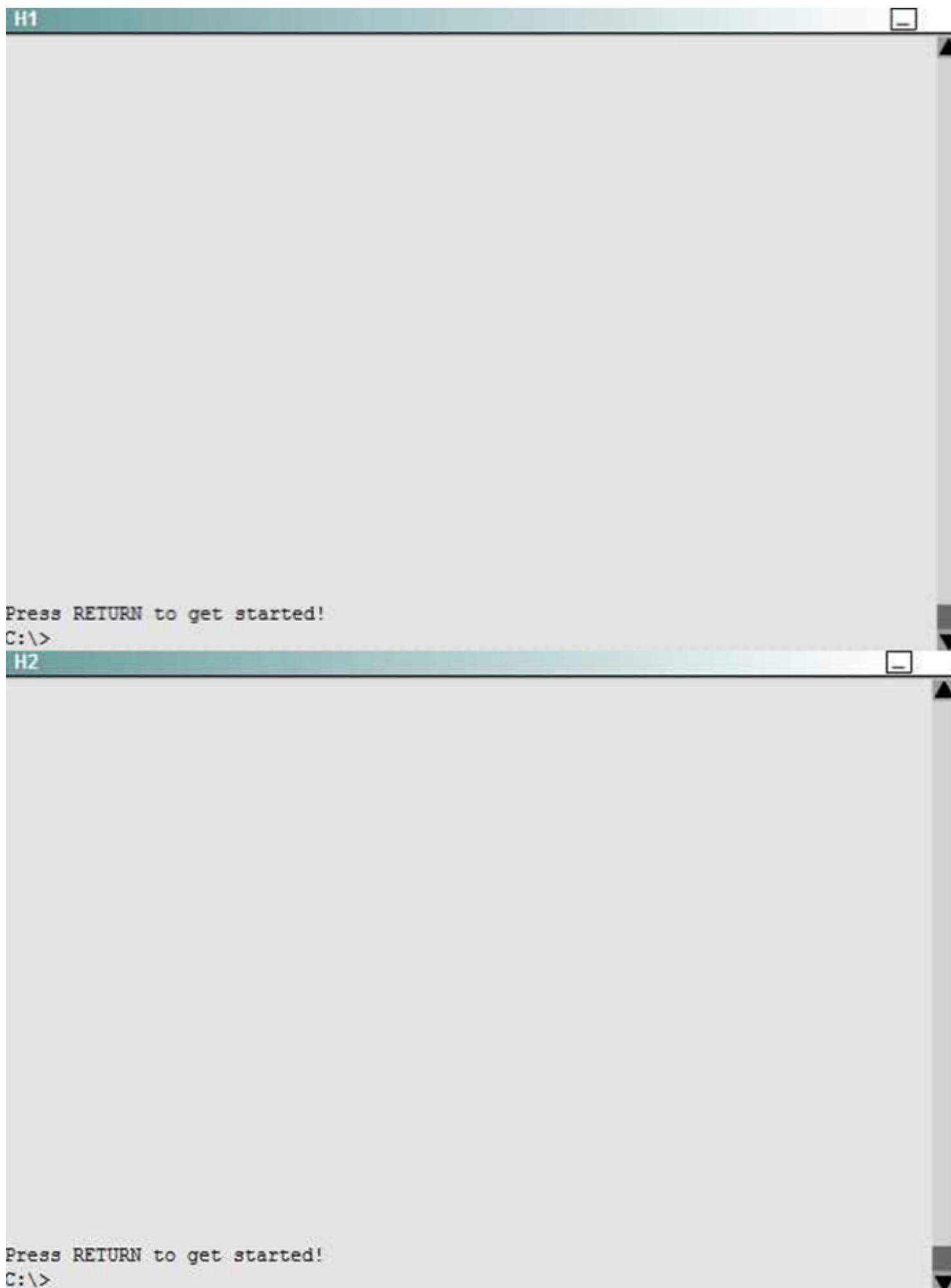
- 10.10.10.0/24
- 190.200.250.32/27
- 190.200.250.64/27

Hosts H1 and H2 are configured with the correct IP address and default gateway. SwitchC uses Cisco as the enable password.

Routing must only be enabled for the specific subnets shown in the diagram.

Note: Due to administrative restrictions and requirements you should not add or delete VLANs, changes VLAN port assignments or create trunks. Company policies forbid the use of static or default routing. All routes must be learned via the EIGRP routing protocol.





```
SwitchC
%LINK-3-UPDOWN: Interface GigabitEthernet0/22, changed state to administratively
down
%LINK-3-UPDOWN: Interface GigabitEthernet0/23, changed state to administratively
down
%LINK-3-UPDOWN: Interface GigabitEthernet0/24, changed state to administratively
down
%LINK-3-UPDOWN: Interface GigabitEthernet0/25, changed state to administratively
down
%LINK-3-UPDOWN: Interface GigabitEthernet0/26, changed state to administratively
down
%LINK-3-UPDOWN: Interface GigabitEthernet0/27, changed state to administratively
down
%LINK-3-UPDOWN: Interface GigabitEthernet0/28, changed state to administratively
down
%LINK-3-UPDOWN: Interface GigabitEthernet0/1, changed state to up
%LINEPROTO-5-UPDOWN: Line protocol on Interface GigabitEthernet0/1, changed stat
e to up
%LINK-3-UPDOWN: Interface GigabitEthernet0/16, changed state to up
%LINEPROTO-5-UPDOWN: Line protocol on Interface GigabitEthernet0/16, changed sta
te to up
%LINK-3-UPDOWN: Interface GigabitEthernet0/15, changed state to up
%LINEPROTO-5-UPDOWN: Line protocol on Interface GigabitEthernet0/15, changed sta
te to up
Press RETURN to get started!
SwitchC>
```

Answer:

Explanation: There are two ways to configure interVLAN routing in this case:

- + Use RouterC as a “router on a stick” and SwitchC as a pure Layer2 switch. Trunking must be established between RouterC and SwitchC.
- + Only use SwitchC for interVLAN routing without using RouterC, SwitchC should be configured as a Layer 3 switch (which supports ip routing function as a router). No trunking requires.

The question clearly states “No trunking has been configured on RouterC” so RouterC does not contribute to interVLAN routing of hosts H1 & H2 -> SwitchC must be configured as a Layer 3 switch with SVIs for interVLAN routing.

We should check the default gateways on H1 & H2. Click on H1 and H2 and type the “ipconfig” command to get their default gateways.

B. \>ipconfig

We will get the default gateways as follows:

Host1:

+ Default gateway: 190.200.250.33

Host2:

+ Default gateway: 190.200.250.65

Now we have enough information to configure SwitchC (notice the EIGRP AS in this case is 650)

Note: VLAN2 and VLAN3 were created and gi0/10, gi0/11 interfaces were configured as access ports so we don’t need to configure them in this sim.

SwitchC# configure terminal

SwitchC(config)# int gi0/1

SwitchC(config-if)#no switchport

IP address on Gi0/1 interface.

-> without using this command, the simulator does not let you assign

SwitchC(config-if)#

ip address 10.10.10.2 255.255.255.0 ->RouterC has used IP 10.10.10.1 so this is the lowest usable IP address.

SwitchC(config-if)# no shutdown SwitchC(config-if)# exit SwitchC(config)# int vlan 2

SwitchC(config-if)# ip address 190.200.250.33 255.255.255.224

SwitchC(config-if)# no shutdown

SwitchC(config-if)# int vlan 3

SwitchC(config-if)# ip address 190.200.250.65 255.255.255.224

SwitchC(config-if)# no shutdown

SwitchC(config-if)#exit

SwitchC(config)#

ip routing (Notice: MLS will not work without this command)

SwitchC(config)# router eigrp 65010

SwitchC(config-router)# network 10.10.10.0 0.0.0.255

SwitchC(config-router)# network 190.200.250.32 0.0.0.31

SwitchC(config-router)# network 190.200.250.64 0.0.0.31

NOTE: THE ROUTER IS CORRECTLY CONFIGURED, so you will not miss within it in the exam, also don’t modify/delete any port just do the above configuration. Also some reports said the “no auto-summary” command can’t be used in the simulator, in fact it is not necessary because the network 190.200.0.0/16 is not used anywhere else in this topology.

In order to complete the lab, you should expect the ping to SERVER to succeed from the MLS, and from the PCs as well.

Also make sure you use the correct EIGRP AS number (in the configuration above it is 650 but it will change when you take the exam) but we are not allowed to access RouterC so the only way to find out the EIGRP AS is to look at the exhibit above. If you use wrong AS number, no neighbor relationship is formed between RouterC and SwitchC.

In fact, we are pretty sure instead of using two commands “network 190.200.250.32 0.0.0.31 and “network 190.200.250.64 0.0.0.31 we can use one simple command “network 190.200.0.0 because it is the nature of distance vector routing protocol like EIGRP: only major networks need to be advertised; even without “no auto-summary” command the network still works correctly. But in the exam the sim is just a flash based simulator so we should use two above commands, just for sure. But after finishing the configuration, we can use “show run” command to verify, only the summarized network 190.200.0.0 is shown.

NEW QUESTION 8

Refer to the exhibit.

```
SW1#show spanning-tree vlan 1
VLAN0001
Spanning tree enabled protocol ieee
Root ID Priority 1
Address 001b.bbbb.dddd
This bridge is the root
Hello Time 2 sec Max Age 20 sec Forward Delay 15 sec
Bridge ID Priority 1 (priority 0 sys-id-ext 1)
Address 001b.bbbb.dddd

Hello Time 2 sec Max Age 20 sec Forward Delay 15 sec
Aging Time 300
```

Interface	Role	Sts	Cost	Prio.Nbr	Type
Fa0/1	Desg	FWD	19	128.15	P2p
Fa0/2	Desg	FWD	19	128.16	P2p
Fa0/3	Desg	FWD	19	128.17	P2p
Fa0/4	Desg	FWD	19	128.18	P2p
Fa0/5	Desg	FWD	19	128.19	P2p
Fa0/6	Desg	FWD	19	128.19	P2p

Why would the switch be considered as a root bridge?

- A. The bridge priority is 1 and all ports are forwarding.
- B. The switch priority for VLAN 1 and the macro specifies "This Bridge is the root".
- C. The bridge priority is 128.19 and all ports are forwarding.
- D. The switch priority value is zero, it has the lowest priority value for VLAN 1.

Answer: D

NEW QUESTION 9

What happens on a Cisco switch that runs Cisco IOS when an RSTP-configured switch receives 802.1d BPDU?

- A. 802.1d does not understand RSTP BPDUs because they are different versions, but when a RSTP switch receives an 802.1d BPDU, it responds with an 802.1d BPDU and eventually the two switches run 802.1d to communicate.
- B. 802.1d understands RSTP BPDUs because they are the same version, but when a RSTP switch receives a 802.1d BPDU, it responds with a 802.1d BPDU and eventually the two switches run 802.1d to communicate.
- C. 802.1d does not understand RSTP BPDUs because they are different versions, but when a RSTP switch receives a 802.1d BPDU, it does not respond with a 802.1d BPDU.
- D. 802.1d understands RSTP BPDUs because they are the same version, but when a RSTP switch receives a 802.1d BPDU, it does not respond with a 802.1d BPDU and eventually the two switches run 802.1d to communicate.

Answer: A

NEW QUESTION 10

After UDLD is implemented, a Network Administrator noticed that one port stops receiving UDLD packets. This port continues to reestablish until after eight failed retries. The port then transitions into the errdisable state. Which option describes what causes the port to go into the errdisable state?

- A. Normal UDLD operations that prevent traffic loops.
- B. UDLD port is configured in aggressive mode.
- C. UDLD is enabled globally.
- D. UDLD timers are inconsistent.

Answer: B

NEW QUESTION 10

Which feature is automatically enabled when a voice VLAN is configured, but not automatically disabled when a voice VLAN is removed?

- A. portfast
- B. port-security

- C. spanning tree
- D. storm control

Answer: A

NEW QUESTION 12

A network engineer is extending a LAN segment between two geographically separated data centers. Which enhancement to a spanning-tree design prevents unnecessary traffic from crossing the extended LAN segment?

- A. Modify the spanning-tree priorities to dictate the traffic flow.
- B. Create a Layer 3 transit VLAN to segment the traffic between the sites.
- C. Use VTP pruning on the trunk interfaces.
- D. Configure manual trunk pruning between the two locations.

Answer: C

NEW QUESTION 16

Which statement describes what happens when a switch enters dual active recovery mode?

- A. The switch shuts down and waits for the VSL link to be restored before sending traffic.
- B. All interfaces are shut down in the formerly active virtual switch member, but the new active virtual switch forwards traffic on all links.
- C. The switch continues to forward traffic out all links and enables spanning tree on VSL link and all other links to prevent loops.
- D. The VSS detects which system was last in active state and shuts down the other switch.

Answer: B

NEW QUESTION 18

Which statement about the use of SDM templates in a Cisco switch is true?

- A. SDM templates are used to configure system resources in the switch to optimize support for specific features, depending on how the switch is used in the network.
- B. SDM templates are used to create Layer 3 interfaces (switch virtual interfaces) to permit hosts in one VLAN to communicate with hosts in another VLAN.
- C. SDM templates are used to configure ACLs that protect networks and specific hosts from unnecessary or unwanted traffic.
- D. SDM templates are used to configure a set of ACLs that allows the users to manage the flow of traffic handled by the route processor.
- E. SDM templates are configured by accessing the switch using the web interface.

Answer: A

NEW QUESTION 19

An access switch has been configured with an EtherChannel port. After configuring SPAN to monitor this port, the network administrator notices that not all traffic is being replicated to the management server. What is a cause for this issue?

- A. VLAN filters are required to ensure traffic mirrors effectively.
- B. SPAN encapsulation replication must be enabled to capture EtherChannel destination traffic.
- C. The port channel can be used as a SPAN source, but not a destination.
- D. RSPAN must be used to capture EtherChannel bidirectional traffic.

Answer: C

NEW QUESTION 20

Refer to the exhibit.

```
3512xl(config)#int fastEthernet 0/1
3512xl(config-if)#switchport mode trunk
3512xl(config-if)#switchport trunk encapsulation dot1q
```

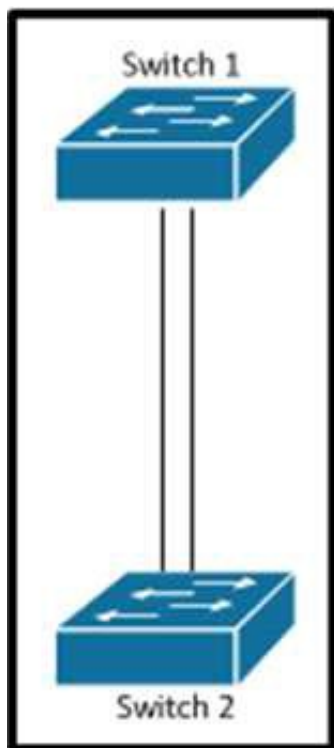
How many bytes are added to each frame as a result of the configuration?

- A. 4-bytes except the native VLAN
- B. 8-bytes except the native VLAN
- C. 4-bytes including native VLAN
- D. 8-bytes including native VLAN

Answer: A

NEW QUESTION 23

Refer to the exhibit.



Which set of configurations will result in all ports on both switches successfully bundling into an EtherChannel?

- A. switch1channel-group 1 mode active switch2channel-group 1 mode auto
- B. switch1channel-group 1 mode desirable switch2channel-group 1 mode passive
- C. switch1channel-group 1 mode on switch2channel-group 1 mode auto
- D. switch1channel-group 1 mode desirable switch2channel-group 1 mode auto

Answer: D

NEW QUESTION 27

For client server failover purposes, the application server team has indicated that they must not have the standard 30 second delay before their switchport enters a forwarding state. For their disaster recovery feature to operate successfully, they require the switchport to enter a forwarding state immediately. Which spanning-tree feature satisfies this requirement?

- A. Rapid Spanning-Tree
- B. Spanning-Tree Timers
- C. Spanning-Tree FastPort
- D. Spanning-Tree PortFast
- E. Spanning-Tree Fast Forward

Answer: D

NEW QUESTION 28

What effect does the mac address-table aging-time 180 command have on the MAC address-table?

- A. This is how long a dynamic MAC address will remain in the CAM table.
- B. The MAC address-table will be flushed every 3 minutes.
- C. The default timeout period will be 360 seconds.
- D. ARP requests will be processed less frequently by the switch.
- E. The MAC address-table will hold addresses 180 seconds longer than the default of 10 minutes.

Answer: A

NEW QUESTION 30

A network is running VTPv2. After verifying all VTP settings, the network engineer notices that the new switch is not receiving the list of VLANs from the server. Which action resolves this problem?

- A. Reload the new switch.
- B. Restart the VTP process on the new switch.
- C. Reload the VTP server.
- D. Verify connected trunk ports.

Answer: D

NEW QUESTION 34

If a network engineer applies the command mac-address-table notification mac-move on a Cisco switch port, when is a syslog message generated?

- A. A MAC address or host moves between different switch ports.
- B. A new MAC address is added to the content-addressable memory.
- C. A new MAC address is removed from the content-addressable memory.
- D. More than 64 MAC addresses are added to the content-addressable memory.

Answer: A

NEW QUESTION 35

Pilot testing of the new switching infrastructure finds that when the root port is lost, STP immediately replaces the root port with an alternative root port. Which

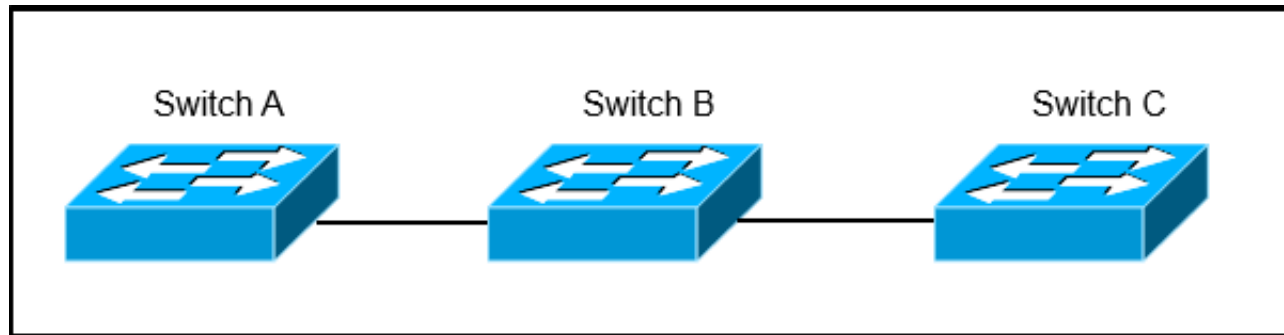
spanning-tree technology is used to accomplish backup root port selection?

- A. PVST+
- B. PortFast
- C. BackboneFast
- D. UplinkFast
- E. Loop Guard
- F. UDLD

Answer: D

NEW QUESTION 37

Refer to the exhibit.



Switch A, B, and C are trunked together and have been properly configured for VTP. Switch B has all VLANs, but Switch C is not receiving traffic from certain VLANs. What would cause this issue?

- A. A VTP authentication mismatch occurred between Switch A and Switch B.
- B. The VTP revision number of Switch B is higher than that of Switch A.
- C. VTP pruning is configured globally on all switches and it removed VLANs from the trunk interface that is connected to Switch C.
- D. The trunk between Switch A and Switch B is misconfigured.

Answer: C

NEW QUESTION 41

A network engineer configured an Ethernet switch using these commands. Switchone(config) # Spanning-tree portfast bpduguard default
Which statement about the spanning-tree portfast feature on the switch is true?

- A. If an interface is enabled for portfast receives BPDU, the port goes through the spanning-tree listening, learning, and forwarding states.
- B. If an interface is enabled for portfast receives BPDU, the port does not go through the spanning-tree listening, learning, and forwarding states.
- C. If an interface is enabled for portfast receives BPDU, the port is shut down immediately.
- D. If an interface is enabled for portfast receives BPDU, the port goes into the spanning-tree inconsistent state.

Answer: A

NEW QUESTION 42

Interface FastEthernet0/1 is configured as a trunk interface that allows all VLANs. This command is configured globally:
monitor session 2 filter vlan 1 - 8, 39, 52
What is the result of the implemented command?

- A. All VLAN traffic is sent to the SPAN destination interface.
- B. Traffic from VLAN 4 is not sent to the SPAN destination interface.
- C. Filtering a trunked SPAN port effectively disables SPAN operations for all VLANs.
- D. The trunk's native VLAN must be changed to something other than VLAN 1.
- E. Traffic from VLANs 1 to 8, 39, and 52 is replicated to the SPAN destination port.

Answer: E

NEW QUESTION 43

What is the function of NSF?

- A. forward traffic simultaneously using both supervisors
- B. forward traffic based on Cisco Express Forwarding
- C. provide automatic failover to back up supervisor in VSS mode
- D. provide nonstop forwarding in the event of failure of one of the member supervisors

Answer: D

NEW QUESTION 48

Refer to the exhibit.

```
Switch# Show run
interface FastEthernet0/13
spanning-tree cost 1000
!
interface FastEthernet0/14
spanning-tree cost 1000
!
interface FastEthernet0/15
spanning-tree cost 1000
!
interface FastEthernet0/20
spanning-tree cost 2
!
interface FastEthernet0/21
spanning-tree cost 1
```

All ports are members of VLAN 10. Considering the default cost of upstream bridges to the root bridge is equal, which option will be the new root port for VLAN 10?

- A. interface f0/13
- B. interface f0/14
- C. interface f0/15
- D. interface f0/21

Answer: D

NEW QUESTION 52

Which option describes a limitation of LLDP?

- A. LLDP cannot provide information about VTP.
- B. LLDP does not support TLVs.
- C. LLDP can discover only Windows servers.
- D. LLDP can discover up to two devices per port.

Answer: A

NEW QUESTION 57

Refer to the exhibit.

```
Switch#sh int g0/12
GigabitEthernet0/23 is up, line protocol is down (monitoring)
  Hardware is C6k 1000Mb 802.3, address is 001c.f9d4.7500 (bia
  001c.f9d4.750)
  MTU 1500 bytes, BW 1000000 Kbit, DLY 10 usec,
    Reliability 255/255, txload 1/255, rxload 1/255
  Encapsulation ARPA, loopback not set
  Keepalive set (10 sec)
  Full-duplex, 1000Mb/s
```

A network engineer investigates a recent network failure and notices that one of the interfaces on the switch is still down. What is causing the line protocol on this interface to be shown as down?

- A. There is a layer 1 physical issue.
- B. There is a speed mismatch on the interface.
- C. The interface is configured as the target of the SPAN session.
- D. The interface is configured as the source of the SPAN session.
- E. There is a duplex mismatch on the interface.

Answer: C

NEW QUESTION 58

Which statement about using EtherChannel on Cisco IOS switches is true?

- A. A switch can support up to eight compatibly configured Ethernet interfaces in an EtherChanne
- B. The EtherChannel provides full-duplex bandwidth up to 800 Mbps only for Fast EtherChannel or 8 Gbps only for Gigabit EtherChannel.
- C. A switch can support up to 10 compatibly configured Ethernet interfaces in an EtherChanne
- D. The EtherChannel provides full-duplex bandwidth up to 1000 Mbps only for Fast EtherChannel or 8 Gbps only for Gigabit EtherChannel.
- E. A switch can support up to eight compatibly configured Ethernet interfaces in an EtherChanne
- F. The EtherChannel provides full-duplex bandwidth up to 800 Mbps only for Fast EtherChannel or 16 Gbps only for Gigabit EtherChannel.
- G. A switch can support up to 10 compatibly configured Ethernet interfaces in an EtherChanne
- H. The EtherChannel provides full-duplex bandwidth up to 1000 Mbps only for Fast EtherChannel or 10 Gbps only for Gigabit EtherChannel.

Answer: A

NEW QUESTION 60

Which feature must be enabled to eliminate the broadcasting of all unknown traffic to switches that are not participating in the specific VLAN?

- A. VTP pruning
- B. port-security
- C. storm control
- D. bpdguard

Answer: A

NEW QUESTION 64

What is the default interval at which Cisco devices send Cisco Discovery Protocol advertisements?

- A. 30 seconds
- B. 60 seconds
- C. 120 seconds
- D. 300 seconds

Answer: B

NEW QUESTION 67

Which option lists the information that is contained in a Cisco Discovery Protocol advertisement?

- A. native VLAN IDs, port-duplex, hardware platform
- B. native VLAN IDs, port-duplex, memory errors
- C. native VLAN IDs, memory errors, hardware platform
- D. port-duplex, hardware platform, memory errors

Answer: A

NEW QUESTION 71

A network engineer deployed a switch that operates the LAN base feature set and decides to use the SDM VLAN template. The SDM template is causing the CPU of the switch to spike during peak working hours. What is the root cause of this issue?

- A. The VLAN receives additional frames from neighboring switches.
- B. The SDM VLAN template causes the MAC address-table to overflow.
- C. The VLAN template disables routing in hardware.
- D. The switch needs to be rebooted before the SDM template takes effect.

Answer: C

NEW QUESTION 73

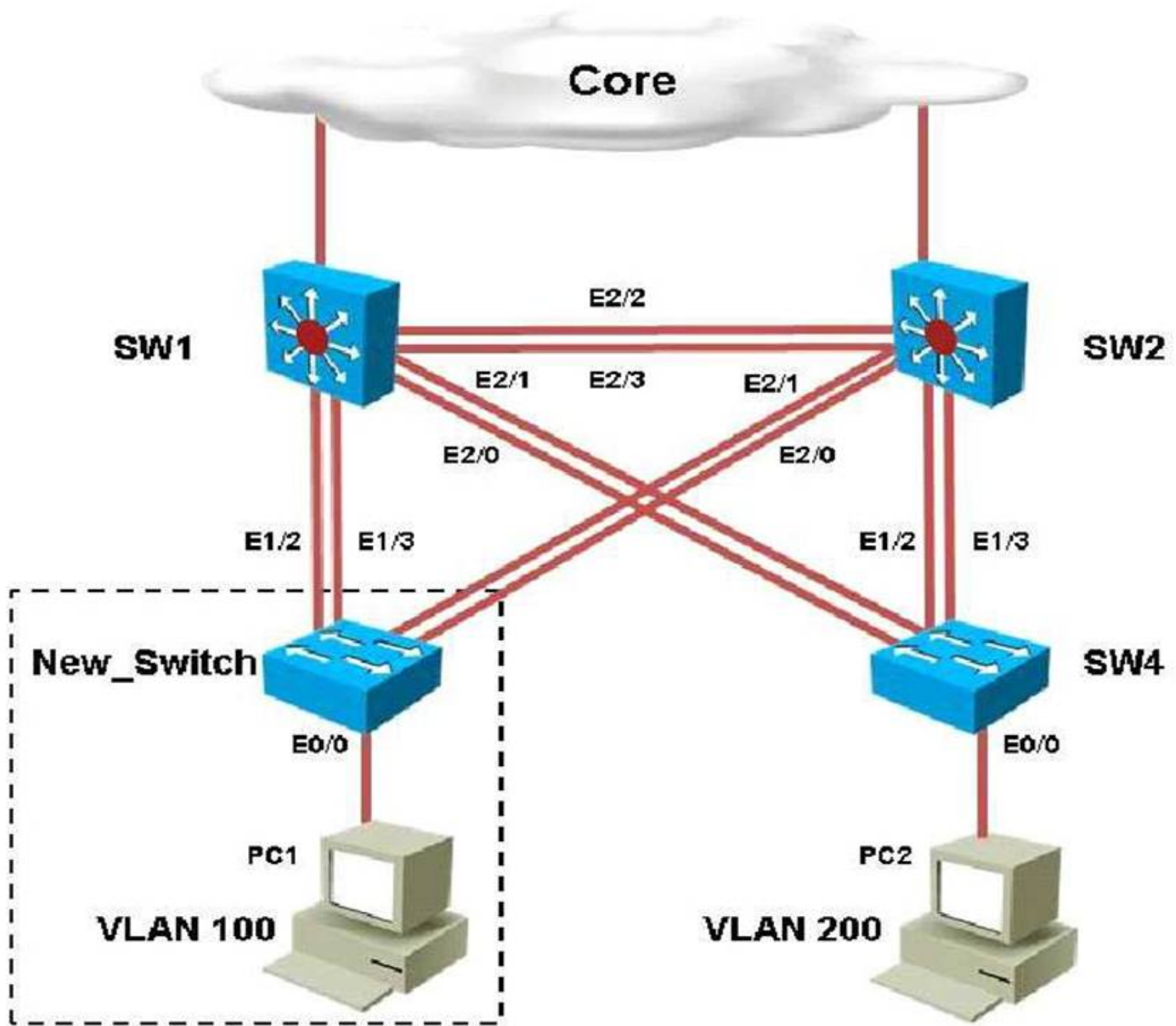
Which statement about restrictions for multichassis LACP is true?

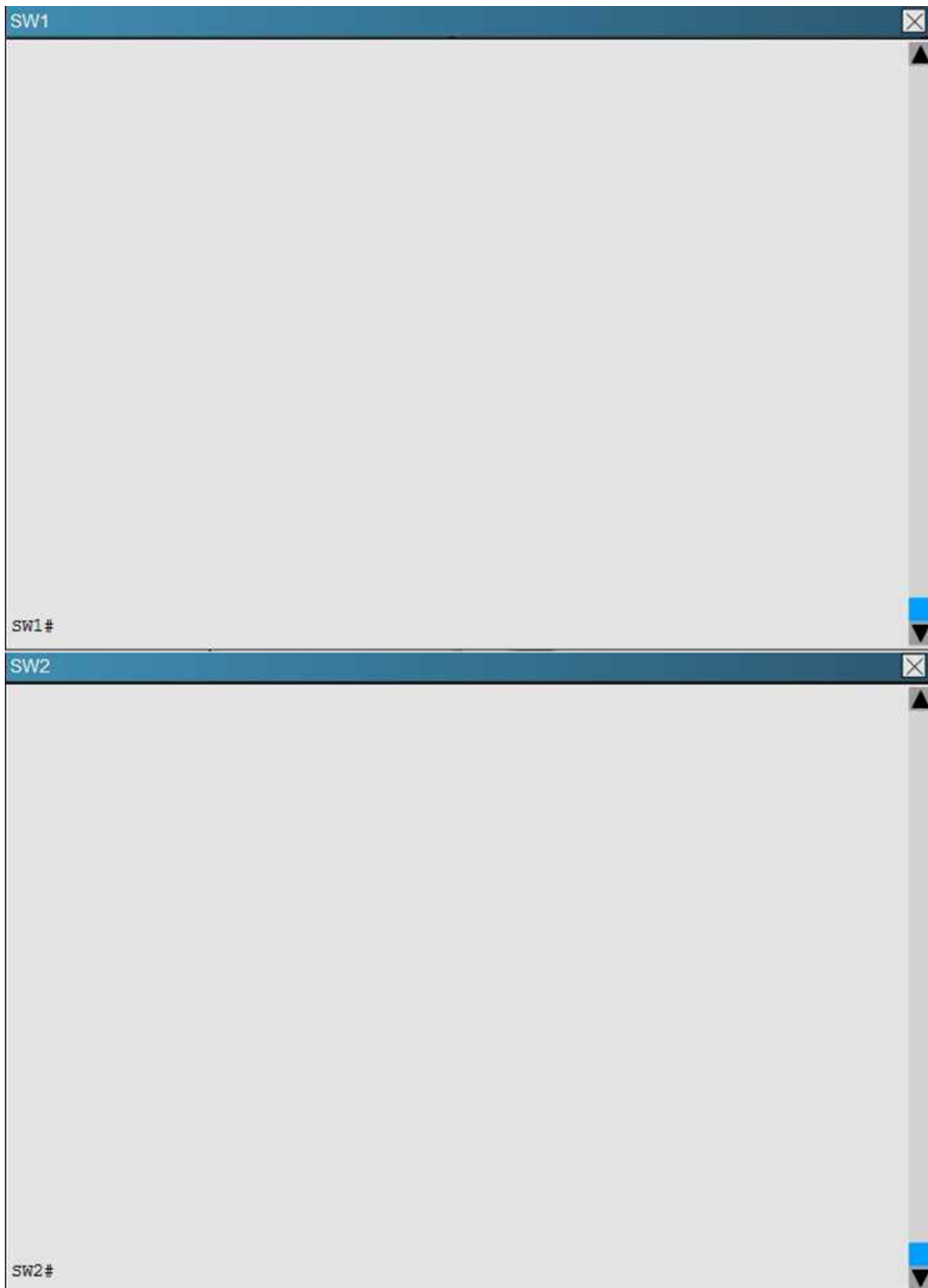
- A. It is available only on a Cisco Catalyst 6500 Series chassis.
- B. It does not support 1Gb links.
- C. Converting a port channel to mLACP can cause a service disruption.
- D. It is not available in VSS.

Answer: C

NEW QUESTION 77

You have been asked to install and configure a new switch in a customer network. Use the console access to the existing and new switches to configure and verify correct device configuration.





You are connecting the New_Switch to the LAN topology; the switch has been partially configured and you need to complete the rest of configuration to enable PC1 communication with PC2. Which of the configuration is correct?

- ☐ vtp domain CCNP_TEST
vtp password cisco123
vtp version 3
vtp mode server
int e0/0
switchport mode access
switchport access vlan 100
- ☐ vtp domain CCNP_TEST
vtp password cisco123
vtp version 3
vtp mode client
int e0/0
switchport mode access
switchport access vlan 200
- ☐ vtp domain CCNP_TEST
vtp password cisco123
vtp version 2
vtp mode client
int e0/0
switchport mode access
switchport access vlan 100
- ☐ vtp domain CCNP
vtp password cisco
vtp version 3
vtp mode client
int e0/0
switchport mode access
switchport access vlan 100
- ☐ vtp domain CCNP
vtp password cisco
vtp version 2
vtp mode transparent
int e0/0
switchport mode access
switchport access vlan 200

- A. Option A
- B. Option B
- C. Option C
- D. Option D
- E. Option E

Answer: D

Explanation: Within any VTP, the VTP domain name must match. So, step one is to find the correct VTP name on the other switches. Logging in to SW1 and using the “show vtp status” command we see this:

SW1

```
SW1#show vtp status
VTP Version capable      : 1 to 3
VTP version running      : 3
VTP Domain Name          : CCNP
VTP Pruning Mode          : Enabled
VTP Traps Generation     : Disabled
Device ID                : aabb.cc00.2500

Feature VLAN:
-----
VTP Operating Mode        : Server
Number of existing VLANs  : 8
Number of existing extended VLANs : 0
Maximum VLANs supported locally : 4096
Configuration Revision    : 11
Primary ID                : aabb.cc00.2b00
Primary Description       : SW1
MD5 digest                : 0xA2 0xFA 0x6E 0x8D 0xD0 0xDE 0x5A 0xEF
                          0xE3 0x65 0x9A 0xF7 0x03 0xBF 0xBA 0x10
```

Feature MST:

So we know that the VTP domain must be CCNP. This leaves only choice D and E. We also see from the topology diagram that eth 0/0 of the new switch connects to a PC in VLNA 100, so we know that this port must be an access port in VLAN 100, leaving only choice D as correct. Note that the VTP versions supported in this network are 1, 2, 3 so either VTP version 2 or 3 can be configured on the new switch.

NEW QUESTION 82

A network engineer is trying to deploy a PC on a network. The engineer observes that when the PC is connected to the network, it takes 30 to 60 seconds for the PC to see any activity on the network interface card. Which Layer 2 enhancement can be used to eliminate this delay?

- A. Configure port duplex and speed to auto negotiation.
- B. Configure port to duplex full and speed 1000.
- C. Configure spanning-tree portfast.
- D. Configure no switchport.

Answer: C

NEW QUESTION 84

A new network that consists of several switches has been connected together via trunking interfaces. If all switches currently have the default VTP domain name "null", which statement describes what happens when a domain name is configured on one of the switches?

- A. The switch with the non-default domain name restores back to "null" upon reboot.
- B. Switches with higher revision numbers does not accept the new domain name.
- C. VTP summary advertisements are sent out of all ports with the new domain name.
- D. All other switches with the default domain name become VTP clients.

Answer: C

NEW QUESTION 87

What is the maximum number of switches that can be stacked using Cisco StackWise?

- A. 4
- B. 5
- C. 8
- D. 9
- E. 10
- F. 13

Answer: D

NEW QUESTION 90

The network manager has requested that several new VLANs (VLAN 10, 20, and 30) are allowed to traverse the switch trunk interface. After the command switchport trunk allowed vlan 10,20,30 is issued, all other existing VLANs no longer pass traffic over the trunk. What is the root cause of the problem?

- A. The command effectively removed all other working VLANs and replaced them with the new VLANs.

- B. VTP pruning removed all unused VLANs.
- C. ISL was unable to encapsulate more than the already permitted VLANs across the trunk.
- D. Allowing additional VLANs across the trunk introduced a loop in the network.

Answer: A

NEW QUESTION 92

Which SDM template disables routing and supports the maximum number of unicast MAC addresses?

- A. VLAN
- B. access
- C. default
- D. routing

Answer: A

NEW QUESTION 96

Which authentication service is needed to configure 802.1x?

- A. RADIUS with EAP Extension
- B. TACACS+
- C. RADIUS with CoA
- D. RADIUS using VSA

Answer: A

NEW QUESTION 98

ADHCP configured router is connected directly to a switch that has been provisioned with DHCP snooping. IP Source Guard with the ip verify source port-security command is configured under the interfaces that connect to all DHCP clients on the switch. However, clients are not receiving an IP address via the DHCP server. Which option is the cause of this issue?

- A. The DHCP server does not support information option 82.
- B. The DHCP client interfaces have storm control configured.
- C. Static DHCP bindings are not configured on the switch.
- D. DHCP snooping must be enabled on all VLANs, even if they are not utilized for dynamic address allocation.

Answer: A

NEW QUESTION 102

When IP Source Guard with source IP filtering is enabled on an interface, which feature must be enabled on the access VLAN for that interface?

- A. DHCP snooping
- B. storm control
- C. spanning-tree portfast
- D. private VLAN

Answer: A

NEW QUESTION 107

To follow the Layer 2 switching guidelines, a network engineer decides to create a separate spanning tree for every group of 10 VLANs. Which version of spanning tree is appropriate to meet the company policy?

- A. MST
- B. PVST+
- C. RSTP
- D. RPVST+
- E. STP

Answer: A

NEW QUESTION 108

After port security is deployed throughout an enterprise campus, the network team has been overwhelmed with port reset requests. They decide to configure the network to automate the process of re-enabling user ports. Which command accomplishes this task?

- A. switch(config)# errdisable recovery interval 180
- B. switch(config)# errdisable recovery cause psecure-violation
- C. switch(config)# switchport port-security protect
- D. switch(config)# switchport port-security aging type inactivity
- E. switch(config)# errdisable recovery cause security-violation

Answer: B

NEW QUESTION 109

A switch is added into the production network to increase port capacity. A network engineer is configuring the switch for DHCP snooping and IP Source Guard, but is unable to configure ip verify source under several of the interfaces. Which option is the cause of the problem?

- A. The local DHCP server is disabled prior to enabling IP Source Guard.
- B. The interfaces are configured as Layer 3 using the no switchport command.
- C. No VLANs exist on the switch and/or the switch is configured in VTP transparent mode.
- D. The switch is configured for sdm prefer routing as the switched database management template.
- E. The configured SVIs on the switch have been removed for the associated interfaces.

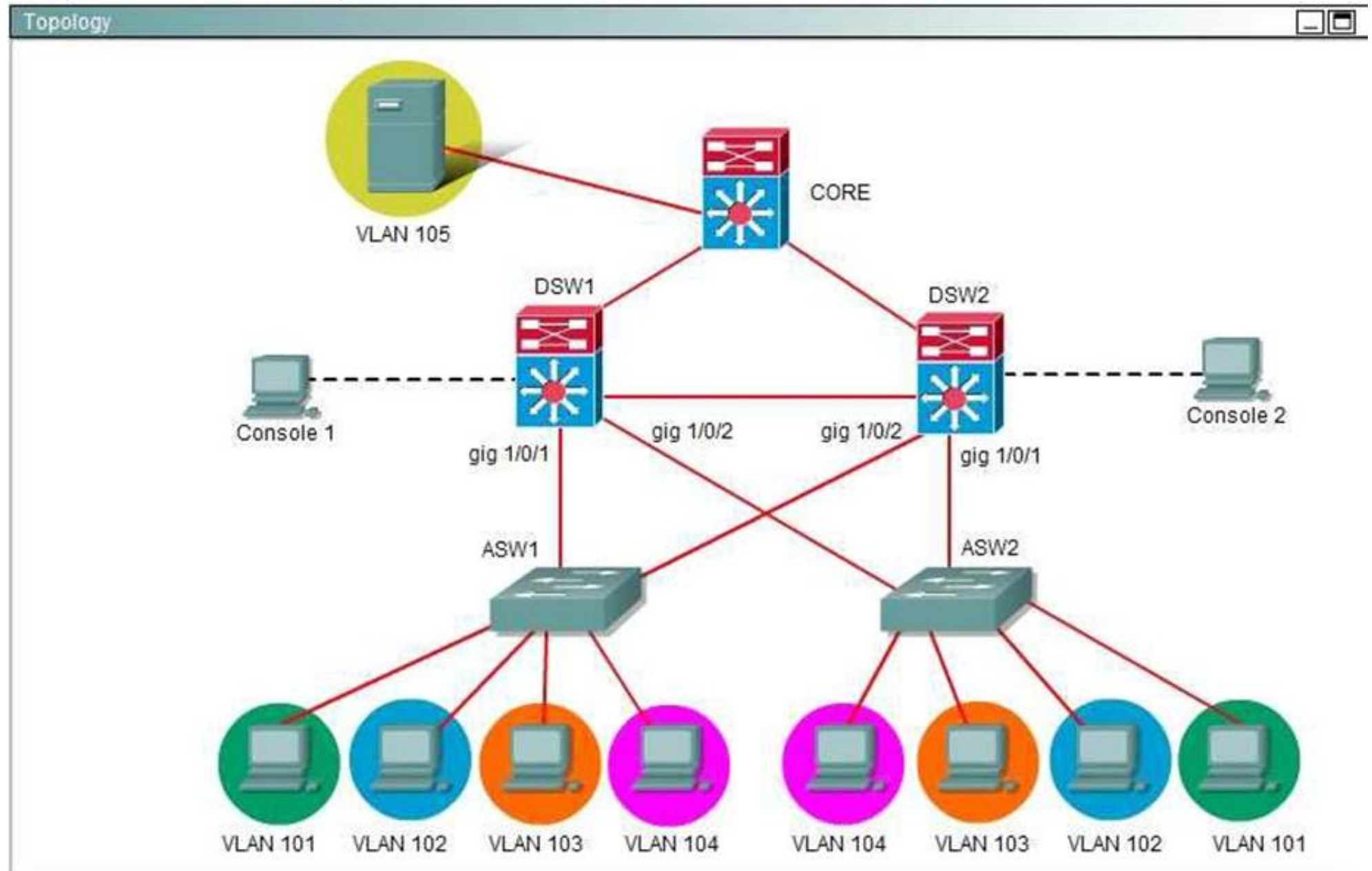
Answer: B

NEW QUESTION 113

Ferris Plastics, Inc. is a medium sized company, with an enterprise network (access, distribution and core switches) that provides LAN connectivity from user PCs to corporate servers. The distribution switches are configured to use HSRP to provide a high availability solution.

- DSW1 -primary device for VLAN 101 VLAN 102 and VLAN 105
- DSW2 - primary device for VLAN 103 and VLAN 104
- A failure of GigabitEthernet1/0/1 on primary device should cause the primary device to release its status as the primary device, unless GigabitEthernet1/0/1 on backup device has also failed.

Troubleshooting has identified several issues. Currently all interfaces are up. Using the running configurations and show commands, you have been asked to investigate and respond to the following question.



If GigabitEthernet1/0/1 on DSW2 is shutdown, what will be the resulting priority value of the VLAN 105 HSRP group on router DSW2?

- A. 90
- B. 100
- C. 150
- D. 200

Answer: A

NEW QUESTION 117

Refer to the exhibit.

```
username cisco password cisco
!  
aaa new-model  
radius-server host 10.1.1.50 auth-port 1812 key C1sc0123  
aaa authentication login default group radius local line  
aaa authentication logging NO_AUTH none  
!  
line vty 0 15  
login authentication default  
password linepass  
line console 0  
login authentication NO_AUTH
```

Which login credentials are required when connecting to the console port in this output?

- A. none required
- B. username cisco with password cisco
- C. no username with password linepass
- D. login authentication default

Answer: A

NEW QUESTION 119

DHCP snooping and IP Source Guard have been configured on a switch that connects to several client workstations. The IP address of one of the workstations does not match any entries found in the DHCP binding database. Which statement describes the outcome of this scenario?

- A. Packets from the workstation will be rate limited according to the default values set on the switch.
- B. The interface that is connected to the workstation in question will be put into the errdisabled state.
- C. Traffic will pass accordingly after the new IP address is populated into the binding database.
- D. The packets originating from the workstation are assumed to be spoofed and will be discarded.

Answer: D

NEW QUESTION 122

Which First Hop Redundancy Protocol is an IEEE Standard?

- A. GLBP
- B. HSRP
- C. VRRP
- D. OSPF

Answer: C

NEW QUESTION 125

Which configuration command ties the router hot standby priority to the availability of its interfaces?

- A. standby group
- B. standby priority
- C. backup interface
- D. standby track

Answer: D

NEW QUESTION 126

Which command is needed to enable DHCP snooping if a switchport is connected to a DHCP server?

- A. ip dhcp snooping trust
- B. ip dhcp snooping
- C. ip dhcp trust
- D. ip dhcp snooping information

Answer: A

NEW QUESTION 130

After UDLD is implemented, a Network Administrator noticed that one port stops receiving UDLD packets. This port continues to reestablish until after eight failed retries. The port then transitions into the errdisable state. Which option describes what causes the port to go into the errdisable state?

- A. Normal UDLD operations that prevent traffic loops.

- B. UDLD port is configured in aggressive mode.
- C. UDLD is enabled globally.
- D. UDLD timers are inconsistent.

Answer: B

NEW QUESTION 133

Which portion of AAA looks at what a user has access to?

- A. authorization
- B. authentication
- C. accounting
- D. auditing

Answer: A

NEW QUESTION 136

Which AAA Authorization type includes PPP, SLIP, and ARAP connections?

- A. network
- B. IP mobile
- C. EXEC
- D. auth-proxy

Answer: A

NEW QUESTION 137

Refer to the exhibit.

```
username cisco password cisco
!
aaa new-model
radius-server host 10.1.1.50 auth-port 1812 key C1sc0123
aaa authentication login default group radius local line
aaa authentication logging NO_AUTH none
!
line vty 0 15
login authentication default
password linepass
line console 0
login authentication NO_AUTH
```

When a network administrator is attempting an SSH connection to the device, in which order does the device check the login credentials?

- A. RADIUS server, local username, line password
- B. RADIUS server, line password, local username
- C. Line password, local username, RADIUS server
- D. Line password, RADIUS server, local username

Answer: A

NEW QUESTION 140

Which option is a benefit of using VSS?

- A. reduces cost
- B. simplifies configuration
- C. provides two independent supervisors with two different control planes
- D. removes the need for a First Hop Redundancy Protocol

Answer: D

NEW QUESTION 142

Which private VLAN can have only one VLAN and be a secondary VLAN that carries unidirectional traffic upstream from the hosts toward the promiscuous ports and the gateway?

- A. isolated VLAN
- B. primary VLAN
- C. community VLAN
- D. promiscuous VLAN

Answer: A

NEW QUESTION 146

When you configure a private VLAN, which type of port must you configure the gateway router port as?

- A. promiscuous port
- B. isolated port
- C. community port
- D. access port

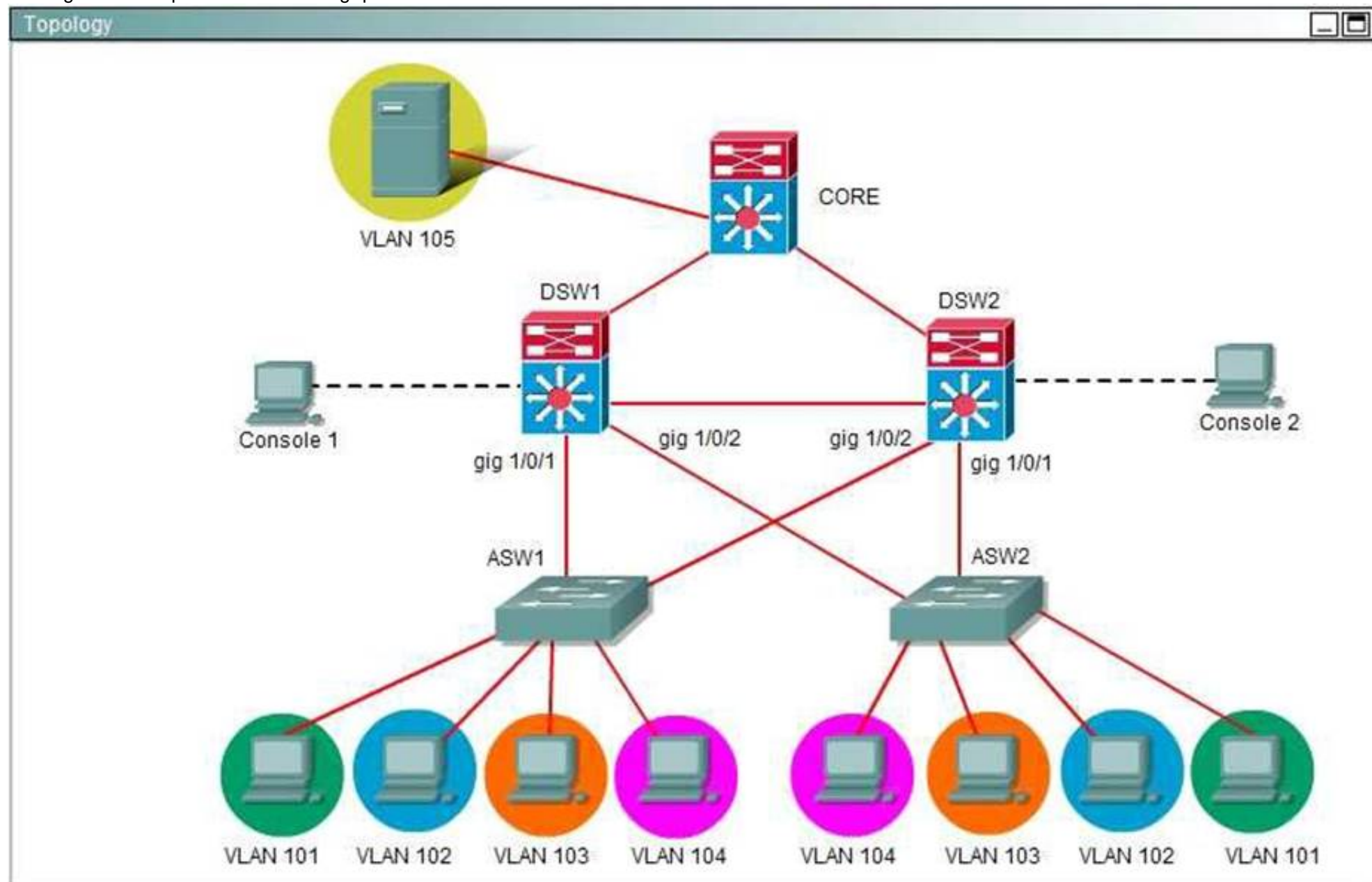
Answer: A

NEW QUESTION 148

Ferris Plastics, Inc. is a medium sized company, with an enterprise network (access, distribution and core switches) that provides LAN connectivity from user PCs to corporate servers. The distribution switches are configured to use HSRP to provide a high availability solution.

- DSW1 -primary device for VLAN 101 VLAN 102 and VLAN 105
- DSW2 - primary device for VLAN 103 and VLAN 104
- A failure of GigabitEthernet1/0/1 on primary device should cause the primary device to release its status as the primary device, unless GigabitEthernet1/0/1 on backup device has also failed.

Troubleshooting has identified several issues. Currently all interfaces are up. Using the running configurations and show commands, you have been asked to investigate and respond to the following question.



During routine maintenance, GigabitEthernet1/0/1 on DSW1 was shut down. All other interfaces were up. DSW2 became the active HSRP device for VLAN 101 as desired. However, after GigabitEthernet1/0/1 on DSW1 was reactivated, DSW1 did not become the active router for VLAN 101 as desired. What needs to be done to make the group for VLAN 101 function properly?

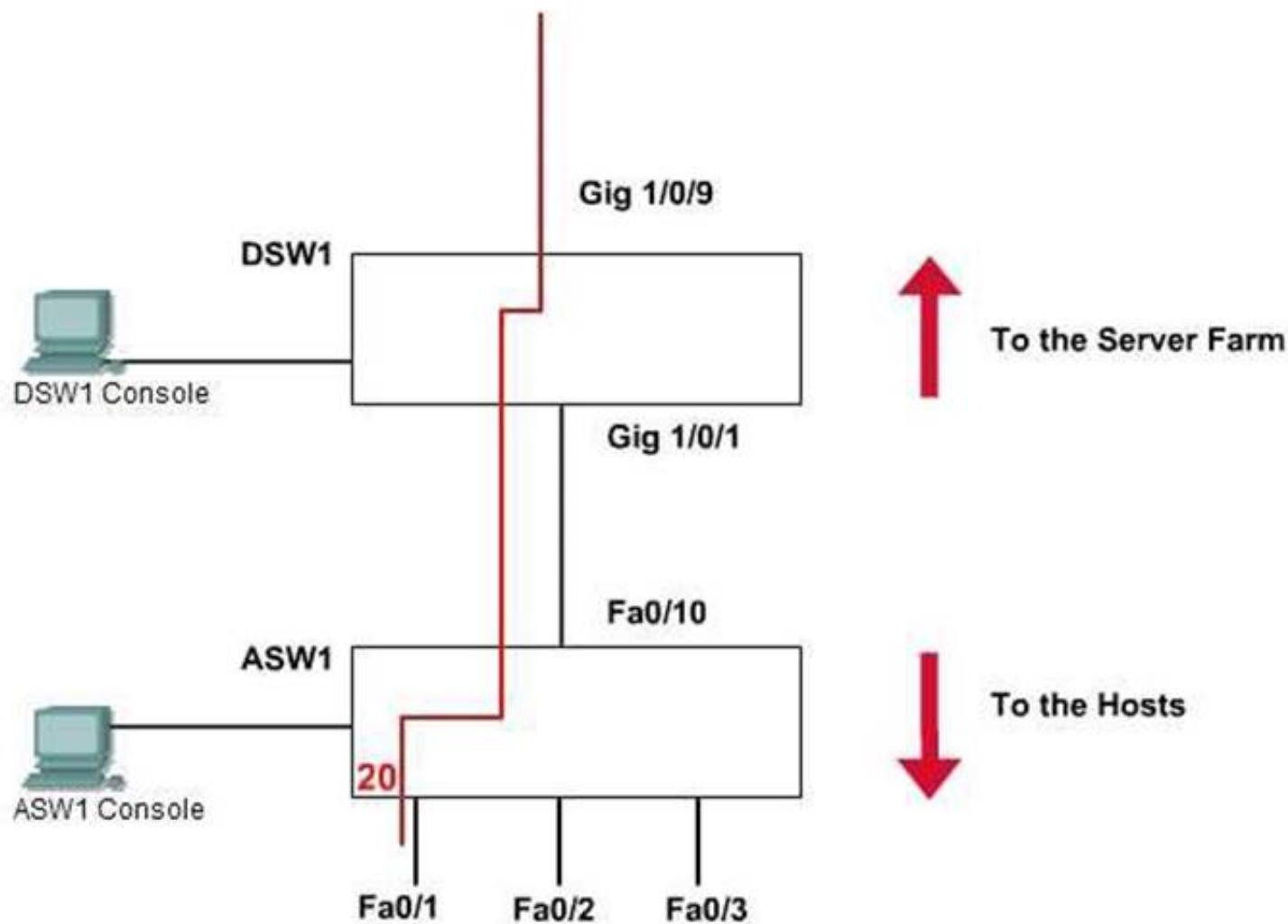
- A. Enable preempt in the VLAN 101 HSRP group on DSW1.
- B. Disable preempt in the VLAN 101 HSRP group on DSW2's.
- C. In the VLAN 101 HSRP group on DSW1, decrease the priority value to a value that is less than the priority value configured in the VLAN 101 HSRP group on DSW2.
- D. Decrease the decrement value in the track command for the VLAN 101 HSRP group on DSW1 to a value less than the value in the track command for the VLAN 101 HSRP group on DSW2.

Answer: A

NEW QUESTION 149

SWITCH.com is an IT company that has an existing enterprise network comprised of two layer 2 only switches; DSW1 and ASW1. The topology diagram indicates their layer 2 mapping. VLAN 20 is a new VLAN that will be used to provide the shipping personnel access to the server. Corporate policies do not allow layer 3 functionality to be enabled on the switches. For security reasons, it is necessary to restrict access to VLAN 20 in the following manner:

- Users connecting to VLAN 20 via portfO/1 on ASW1 must be authenticated before they are given access to the network. Authentication is to be done via a Radius server:
 - Radius server host: 172.120.40.46
 - Radius key: rad123
 - Authentication should be implemented as close to the host as possible.
 - Devices on VLAN 20 are restricted to the subnet of 172.120.40.0/24.
 - Packets from devices in the subnet of 172.120.40.0/24 should be allowed on VLAN 20.
 - Packets from devices in any other address range should be dropped on VLAN 20.
 - Filtering should be implemented as close to the serverfarm as possible.
- The Radius server and application servers will be installed at a future date. You have been tasked with implementing the above access control as a pre-condition to installing the servers. You must use the available IOS switch features.



Answer:

Explanation: The configuration:

Step1: Console to ASW1 from PC console 1 ASW1(config)#aaa new-model
 ASW1(config)#radius-server host 172.120.39.46 key rad123 ASW1(config)#aaa authentication dot1x default group radius ASW1(config)#dot1x system-auth-control ASW1(config)#inter fastEthernet 0/1
 ASW1(config-if)#switchport mode access ASW1(config-if)#dot1x port-control auto ASW1(config-if)#exit
 ASW1#copy run start
 Step2: Console to DSW1 from PC console 2 DSW1(config)#ip access-list standard 10 DSW1(config-ext-nacl)#permit 172.120.40.0 0.0.0.255
 DSW1(config-ext-nacl)#exit DSW1(config)#vlan access-map PASS 10 DSW1(config-access-map)#match ip address 10 DSW1(config-access-map)#action forward
 DSW1(config-access-map)#exit DSW1(config)#vlan access-map PASS 20 DSW1(config-access-map)#action drop DSW1(config-access-map)#exit
 DSW1(config)#vlan filter PASS vlan-list 20 DSW1#copy run start

NEW QUESTION 153

Refer to the exhibit.

```
monitor session 1 source interface g0/4 rx
monitor session 1 filter vlan 3
monitor session 1 destination interface g0/5
```

What is the result of the SPAN configuration on a Cisco switch?

- Configure a SPAN session to monitor the received traffic on interface g0/4 only for VLAN 3.
- Configure a SPAN session to monitor the received traffic on interface g0/4 for all VLANs except VLAN 3.
- Configure a SPAN session to monitor the received traffic on interface g0/5 only for VLAN 3.
- Configure a SPAN session to monitor the received traffic on interface g0/5 for all VLANs except VLAN 3.

Answer: A

NEW QUESTION 155

Which type of information does the DHCP snooping binding database contain?

- A. untrusted hosts with leased IP addresses
- B. trusted hosts with leased IP addresses
- C. untrusted hosts with available IP addresses
- D. trusted hosts with available IP addresses

Answer: A

NEW QUESTION 158

When a Layer 2 EtherChannel is configured, which statement about placement of the IP address is true?

- A. The IP address is placed on the highest numbered member port.
- B. The IP address is placed on the port-channel logical interface.
- C. The IP address is placed on the lowest numbered member port.
- D. The IP address is assigned via DHCP only.

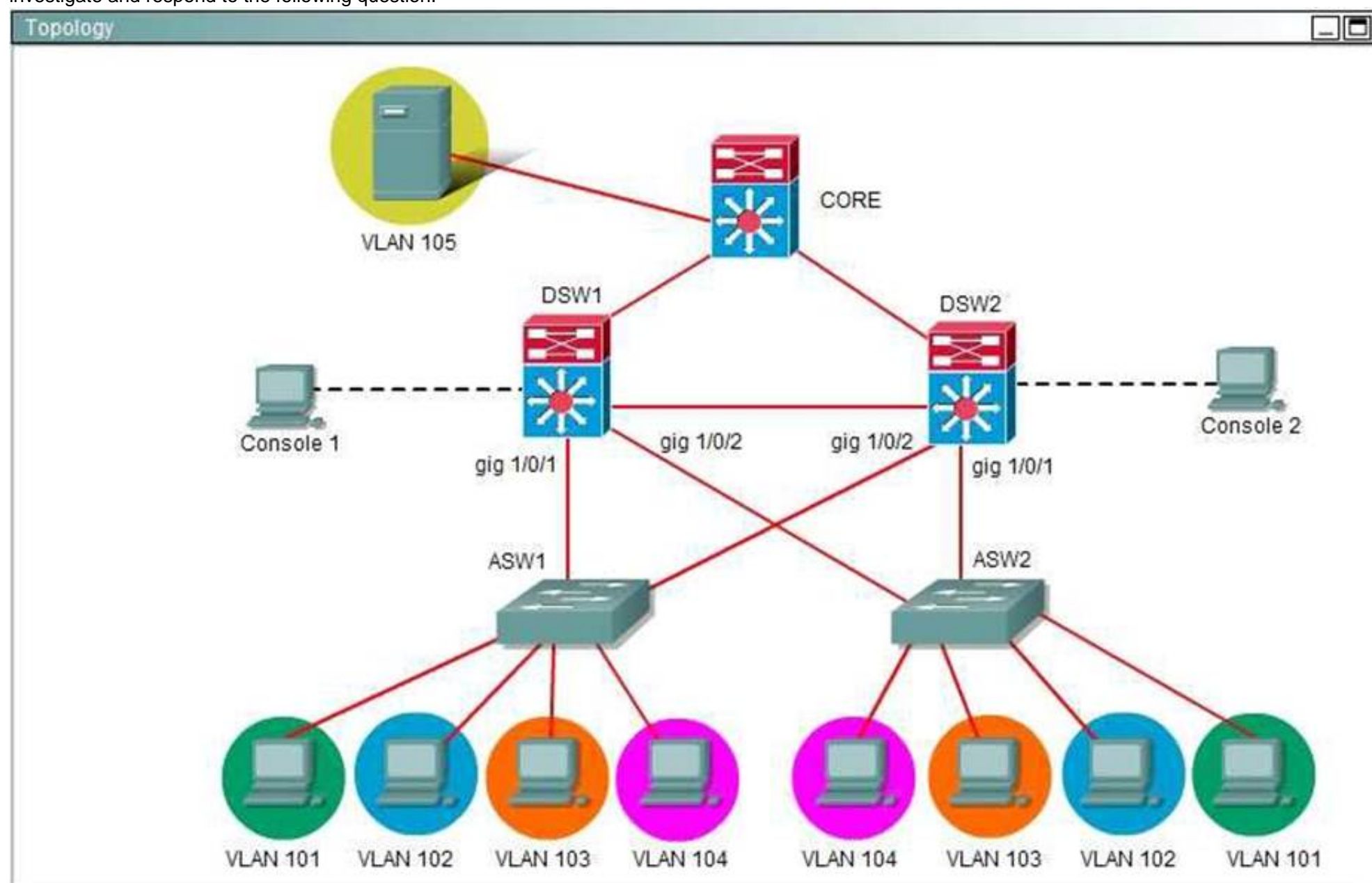
Answer: B

NEW QUESTION 162

Ferris Plastics, Inc. is a medium sized company, with an enterprise network (access, distribution and core switches) that provides LAN connectivity from user PCs to corporate servers. The distribution switches are configured to use HSRP to provide a high availability solution.

- DSW1 -primary device for VLAN 101 VLAN 102 and VLAN 105
- DSW2 - primary device for VLAN 103 and VLAN 104
- A failure of GigabitEthernet1/0/1 on primary device should cause the primary device to release its status as the primary device, unless GigabitEthernet1/0/1 on backup device has also failed.

Troubleshooting has identified several issues. Currently all interfaces are up. Using the running configurations and show commands, you have been asked to investigate and respond to the following question.



During routine maintenance, it became necessary to shut down the GigabitEthernet1/0/1 interface on DSW1. All other interfaces were up. During this time, DSW1 remained the active device for the VLAN 102 HSRP group. You have determined that there is an issue with the decrement value in the track command for the VLAN 102 HSRP group. What needs to be done to make the group function properly?

- A. The decrement value on DSW1 should be greaterthan 5 and less than 15. 0
- B. The decrement value on DSW1 should be greaterthan 9 and less than 15.
- C. The decrement value on DSW1 should be greaterthan 11 and less than 19.
- D. The decrement value on DSWTs should be greaterthan 190 and less than 200.
- E. The decrement value on DSWTs should be greaterthan 195 and less than 205.

Answer: C

Explanation: The question clearly stated that there was an issue with the decrement value in VLAN 102 so we should check VLAN 102 on both DSW1 and DSW2 switches first. Click on the PC Console1 and PC Console2 to access these switches then use the "show running-config" command on both switches

DSW1>enable

DSW1#show running-config DSW2>enable

DSW2#show running-config

```
DSW1#show running-config
<output omitted>

interface Vlan102
  ip address 192.168.102.1 255.255.255.0
  standby 2 ip 192.168.102.254
  standby 2 priority 200
  standby 2 preempt
  standby 2 track GigabitEthernet1/0/1 5
!
```

```
DSW2#show running-config
<output omitted>

interface Vlan102
  ip address 192.168.102.2 255.255.255.0
  standby 2 ip 192.168.102.254
  standby 2 priority 190
  standby 2 preempt
  standby 2 track GigabitEthernet1/0/1
!
```

As shown in the outputs, the DSW1's priority is 200 and is higher than that of DSW2 so DSW1 becomes active switch for the group. Notice that the interface Gig1/0/1 on DSW1 is being tracked so when this interface goes down, HSRP automatically reduces the router's priority by a configurable amount, in this case 5. Therefore the priority of DSW1 goes down from 200 to 195. But this value is still higher than that of DSW2 (190) so DSW1 remains the active switch for the group. To make DSW2 take over this role, we have to configure DSW1's decrement value with a value equal or greater than 11 so that its result is smaller than that of DSW2 ($200 - 11 < 190$). Therefore C is the correct answer.

NEW QUESTION 163

Which command creates a login authentication method named "login" that will primarily use RADIUS and fail over to the local user database?

- A. (config)# aaa authentication login default radius local
- B. (config)# aaa authentication login login radius local
- C. (config)# aaa authentication login default local radius
- D. (config)# aaa authentication login radius local

Answer: B

NEW QUESTION 168

Which command correctly configures standby tracking for group 1 using the default decrement priority value?

- A. standby 1 track 100
- B. standby 1 track 100 decrement 1
- C. standby 1 track 100 decrement 5
- D. standby 1 track 100 decrement 20

Answer: A

NEW QUESTION 169

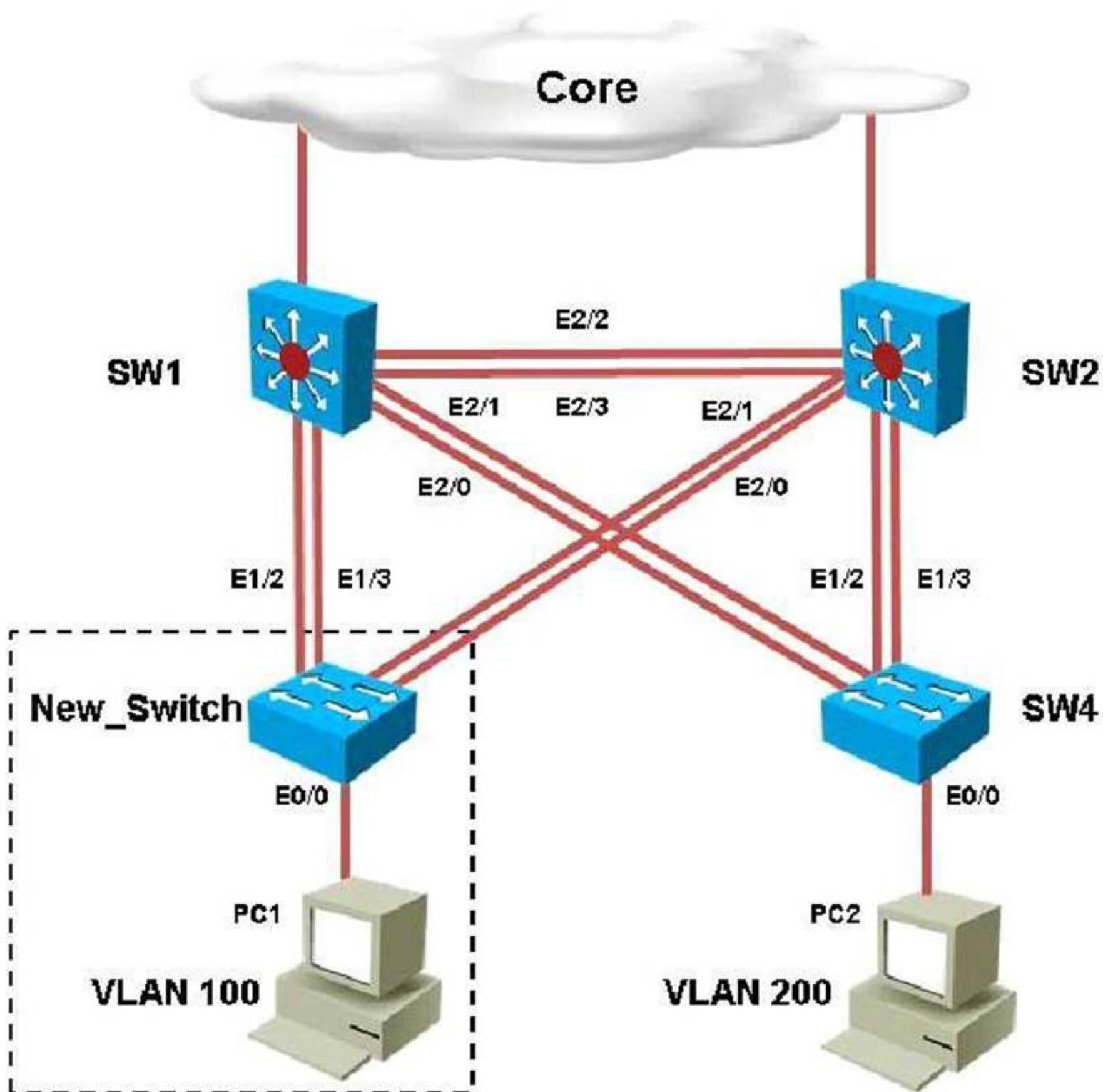
Which feature describes MAC addresses that are dynamically learned or manually configured, stored in the address table, and added to the running configuration?

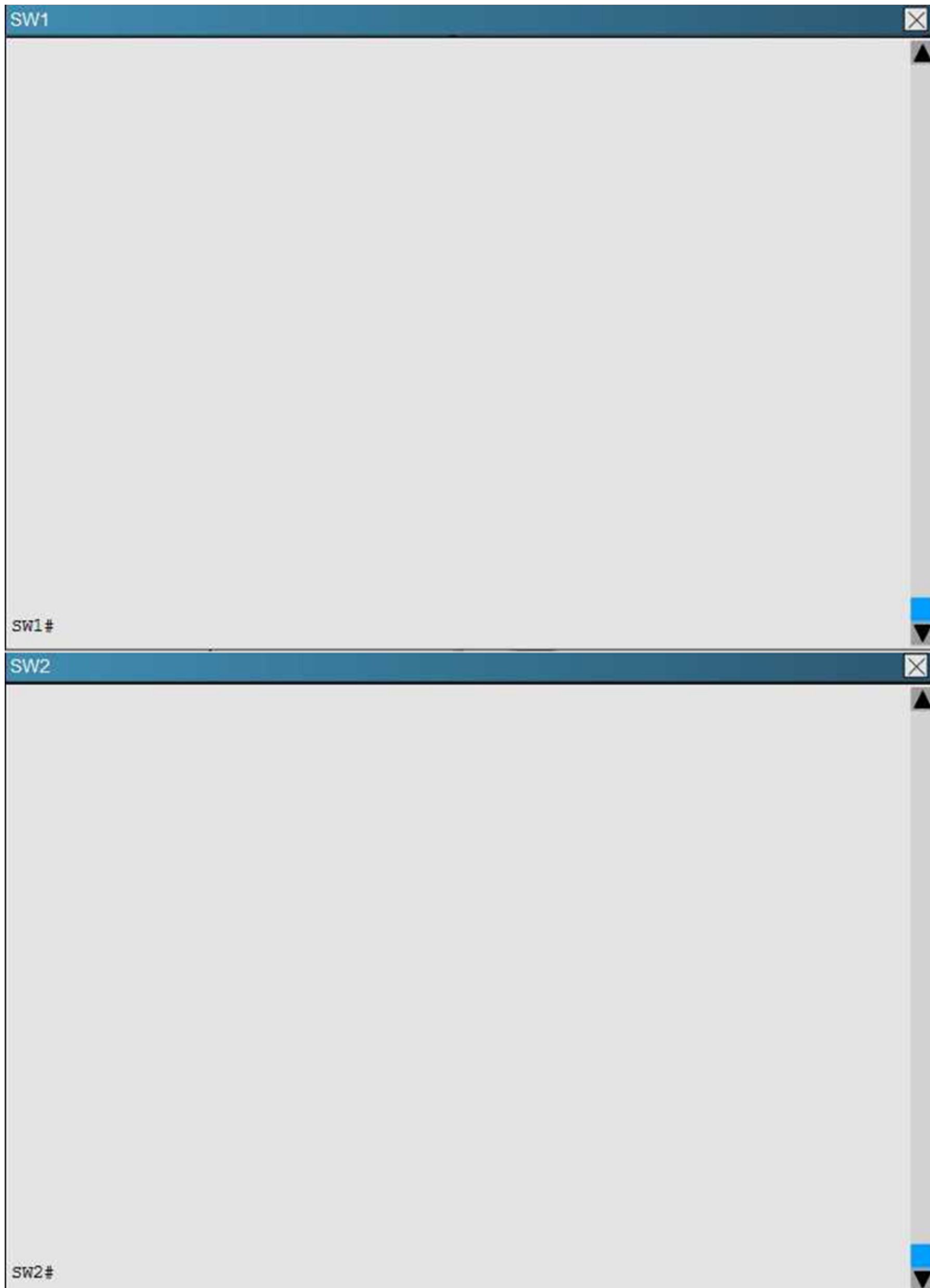
- A. sticky
- B. dynamic
- C. static
- D. secure

Answer: A

NEW QUESTION 174

You have been asked to install and configure a new switch in a customer network. Use the console access to the existing and new switches to configure and verify correct device configuration.





Examine the VTP configuration. You are required to configure private VLANs for a new server deployment connecting to the SW4 switch. Which of the following configuration steps will allow creating private VLANs?

- A. Disable VTP pruning on SW1 only
- B. Disable VTP pruning on SW2 only
- C. Disable VTP pruning on SW4 only

- D. Disable VTP pruning on SW2, SW4 and New_Switch
- E. Disable VTP pruning on New_Switch and SW4 only.

Answer: C

Explanation: To create private VLANs, you will need to only disable pruning on the switch that contains the private VLANs. In this case, only SW4 will connect to servers in a private VLAN.

NEW QUESTION 177

While troubleshooting a network outage, a network engineer discovered an unusually high level of broadcast traffic coming from one of the switch interfaces. Which option decreases consumption of bandwidth used by broadcast traffic?

- A. storm control
- B. SDM routing
- C. Cisco IOS parser
- D. integrated routing and bridging
- E. Dynamic ARP Inspection

Answer: A

NEW QUESTION 182

A network engineer wants to ensure Layer 2 isolation of customer traffic using a private VLAN. Which configuration must be made before the private VLAN is configured?

- A. Disable VTP and manually assign VLANs.
- B. Ensure all switches are configured as VTP server mode.
- C. Configure VTP Transparent Mode.
- D. Enable VTP version 3.

Answer: C

NEW QUESTION 186

Which private VLAN access port belongs to the primary VLAN and can communicate with all interfaces, including the community and isolated host ports?

- A. promiscuous port
- B. isolated port
- C. community port
- D. trunk port

Answer: A

NEW QUESTION 187

Which gateway role is responsible for answering ARP requests for the virtual IP address in GLBP?

- A. active virtual forwarder
- B. active virtual router
- C. active virtual gateway
- D. designated router

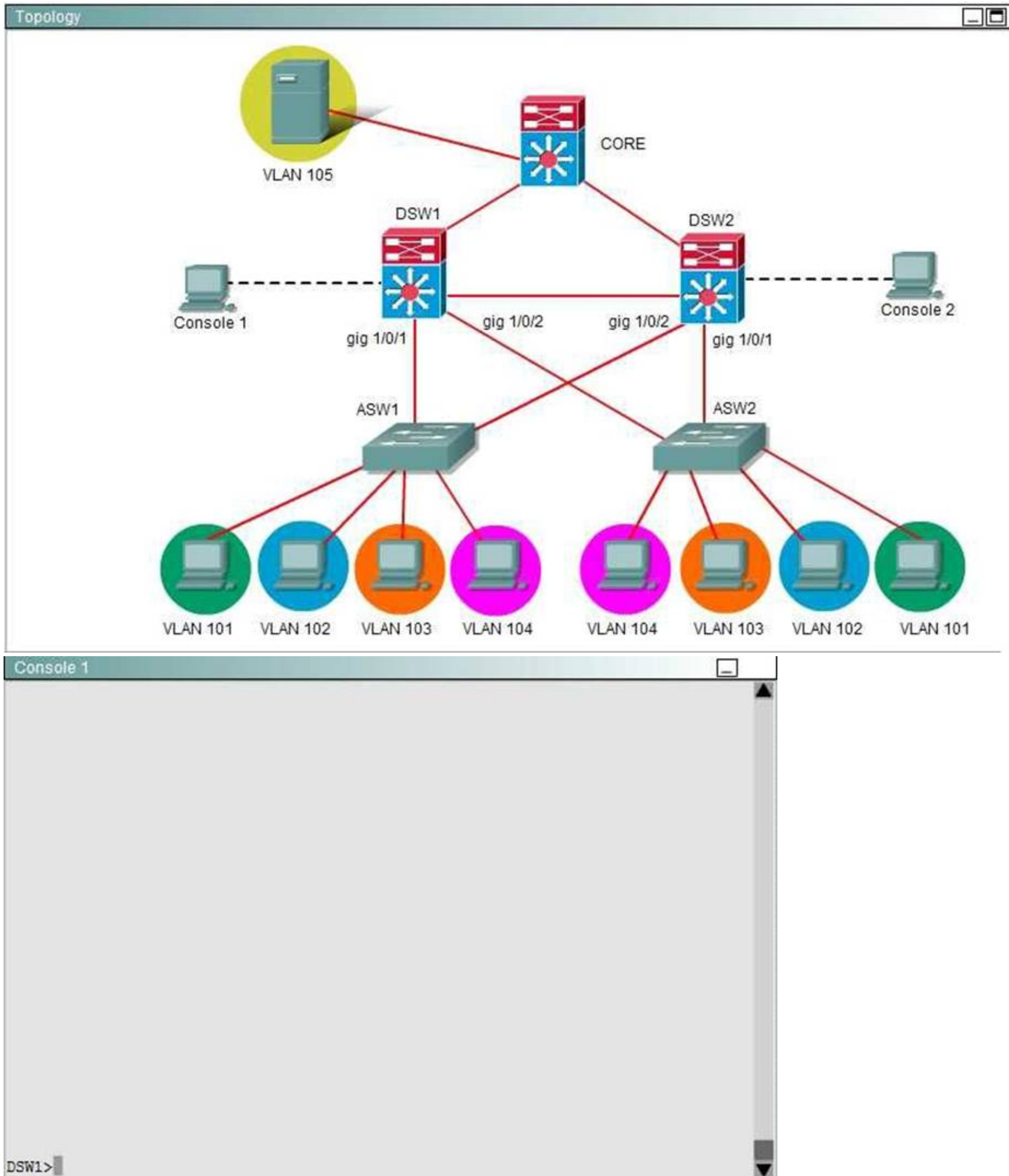
Answer: C

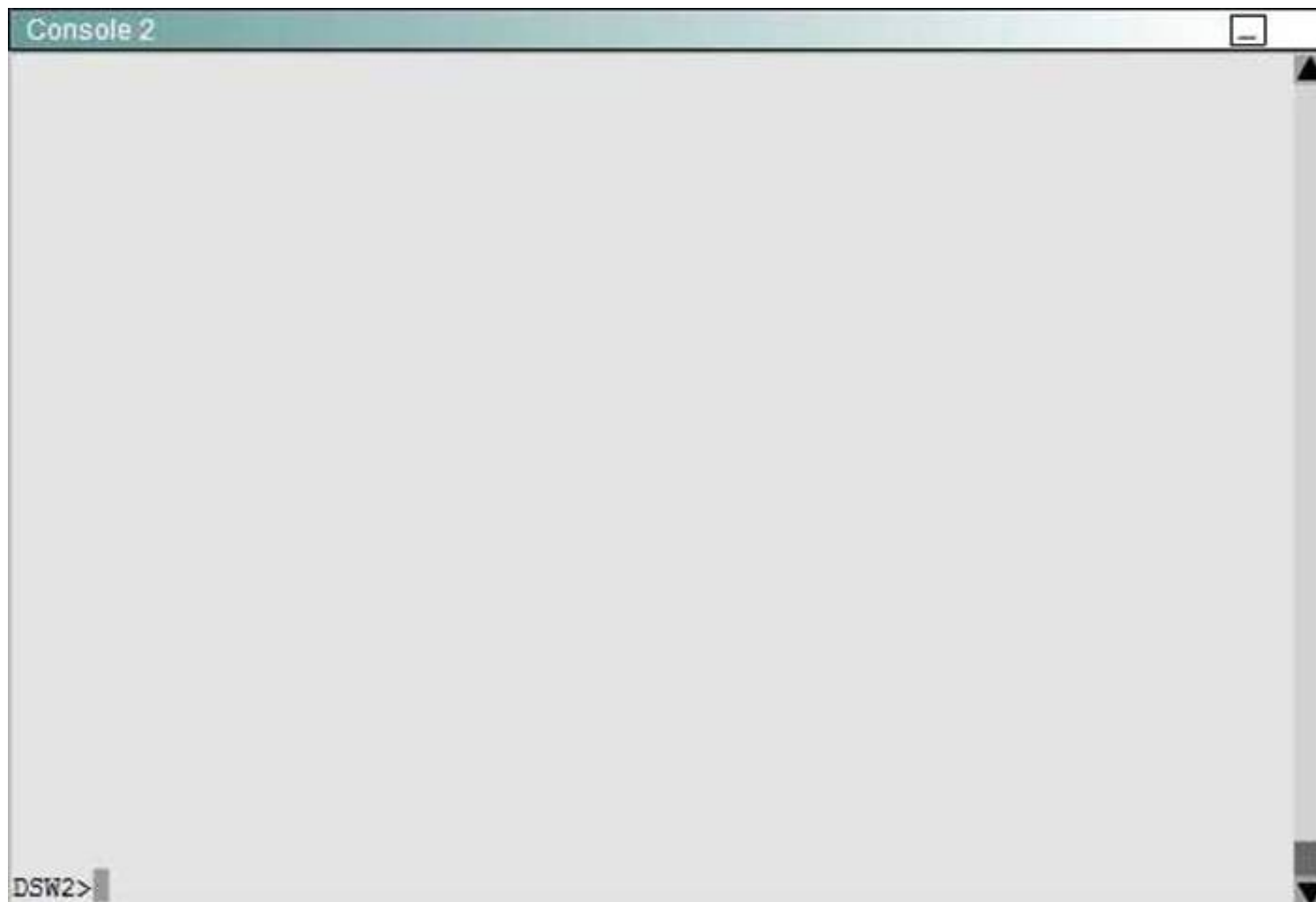
NEW QUESTION 190

Ferris Plastics, Inc. is a medium sized company, with an enterprise network (access, distribution and core switches) that provides LAN connectivity from user PCs to corporate servers. The distribution switches are configured to use HSRP to provide a high availability solution.

- DSW1 -primary device for VLAN 101 VLAN 102 and VLAN 105
- DSW2 - primary device for VLAN 103 and VLAN 104
- A failure of GigabitEthernet1/0/1 on primary device should cause the primary device to release its status as the primary device, unless GigabitEthernet1/0/1 on backup device has also failed.

Troubleshooting has identified several issues. Currently all interfaces are up. Using the running configurations and show commands, you have been asked to investigate and respond to the following question.





During routine maintenance, it became necessary to shut down the GigabitEthernet1/0/1 interface on DSW1 and DSW2. All other interfaces were up. During this time, DSW1 became the active router for the VLAN 104HSRP group. As related to the VLAN 104HSRP group, what can to be done to make the group function properly?

- A. On DSW1, disable preempt.
- B. On DSW2 decrease the priority value to a value less than 150.
- C. On DSW1, increase the decrement value in the track command to a value greater than 6.
- D. On DSW1, decrease the decrement value in the track command to a value less than 1.

Answer: C

NEW QUESTION 192

In which two ways are IEEE STP BPDUs forwarded if VLAN 99 is configured as native? (Choose two)

- A. VLAN 1 STP BPDUs are sent tagged on VLAN 1
- B. VLAN 1 STP BPDUs are sent tagged on VLAN 99
- C. VLAN 1 and VLAN 99 BPDUs are sent tagged on VLAN 1
- D. VLAN 1 STP BPDUs are sent untagged on VLAN 1
- E. VLAN 1 STP BPDUs are sent untagged on VLAN 99

Answer: DE

NEW QUESTION 194

During the implementation of a voice solution, which two required items are configured at an access layer switch that will be connected to an IP phone to provide VoIP communication? (Choose two.)

- A. allowed codecs
- B. untagged VLAN
- C. auxiliary VLAN
- D. Cisco Unified Communications Manager IP address
- E. RSTP

Answer: BC

NEW QUESTION 197

How does VTP pruning enhance network bandwidth?

- A. by restricting unicast traffic across VTP domains
- B. by reducing unnecessary flooding of traffic to inactive VLANs
- C. by limiting the spreading of VLAN information
- D. by disabling periodic VTP updates

Answer: B

NEW QUESTION 200

Which causes routers R1 and R2 to be displayed as HSRP active routers for Group 2?

- A. The HSRP group numbers do not match
- B. The HSRP group authentication is misconfigured.

- C. The HSRP Hello packets are blocked
- D. The HSRP timers do not match
- E. The HSRP group priorities do not match

Answer: B

NEW QUESTION 204

Which protocol will enable a group of routers to form a single virtual router and will use the real IP address of a router as the gateway address?

- A. Proxy ARP
- B. HSRP
- C. IRDP
- D. VRRP
- E. GLBP

Answer: D

NEW QUESTION 206

Refer to the exhibit. What is the result of setting GLBP weighting at 105 with lower threshold 90 and upper threshold 100 on this router?

```
Router# show glbp FastEthernet0/1 1
FastEthernet0/1 - Group 1

State is Listen
  64 state changes, last state change 00:00:54
Virtual IP address is 10.1.0.7
Hello time 50 msec, hold time 200 msec
  Next hello sent in 0.030 secs
Redirect time 600 sec, forwarder time-out 14400 sec
Authentication text "authword"
Preemption enabled, min delay 0 sec
Active is 10.1.0.2, priority 105 (expires in 0.184 sec)
Standby is 10.1.0.3, priority 100 (expires in 0.176 sec)
Priority 96 (configured)
Weighting 105 (configured 105), thresholds: lower 90, upper 100
  Track object 1 state Up decrement 10
  Track object 2 state Up decrement 10
Load balancing: round-robin
IP redundancy name is "glbp1"
Group members:
  0004.4d83.4801 (10.0.0.0)
  0010.7b5a.fa41 (10.0.0.1)
  00d0.bbd3.bc21 (10.0.0.2) local
```

- A. Only if both tracked objects are up will this router will be available as an AVF for group 1.
- B. Only if the state of both tracked objects goes down will this router release its status as an AVF for group 1.
- C. If both tracked objects go down and then one comes up, but the other remains down, this router will be available as an AVF for group 1.
- D. This configuration is incorrect and will not have any effect on GLBP operation.
- E. If the state of one tracked object goes down then this router will release its status as an AVF for group 1.

Answer: B

NEW QUESTION 208

Refer to the exhibit.

(Picture was showing from CLI "show spanning-tree vlan xx" that running on mode rapid-pvst).

If you have a new switch (that runs spanning-tree mode pvst+) connect to the exist switch, which statement is true?

- A. It will not working between two switches
- B. It will work, the new switch will communicate exist switch with PVST+
- C. It will work, the new switch will communicate exist switch with Rapid-PVST
- D. NA

Answer: B

NEW QUESTION 213

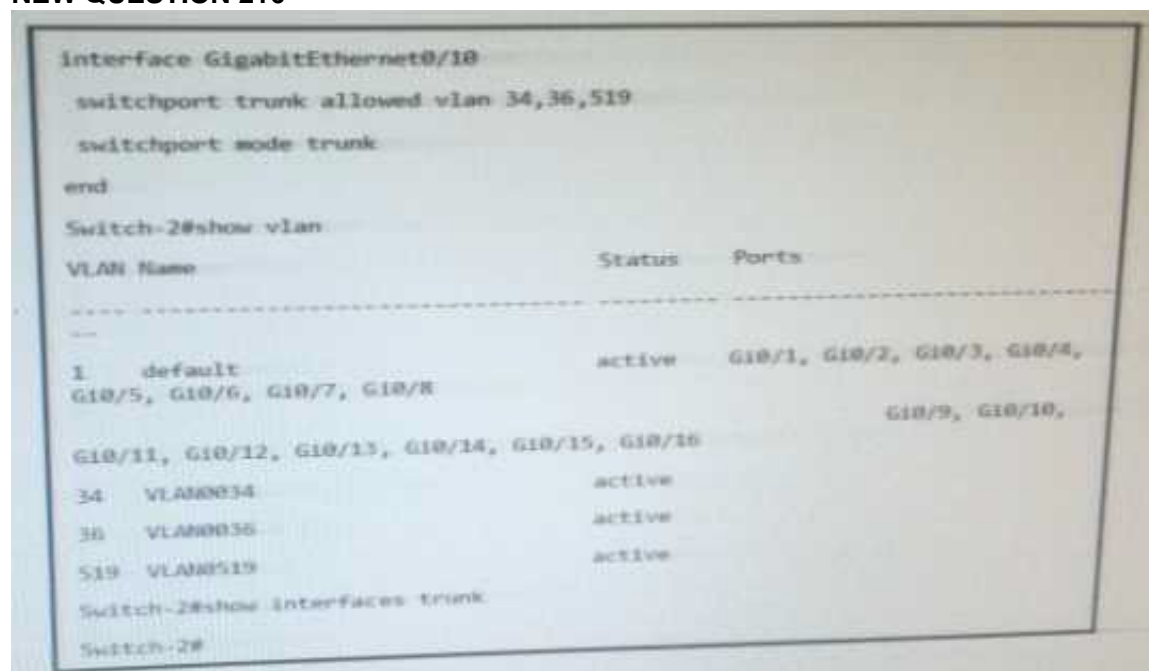
Which option is a Cisco recommended RSPAN configuration practice?

- A. Define an RSPAN VLAN before configuring an RSPAN source or destination session.
- B. Use a different RSPAN VLAN for each session if configuring RSPAN on multiple switches.
- C. Assign access ports to an RSPAN VLAN like any other campus VLAN.

D. Use only one destination port for each RSPAN session.

Answer: A

NEW QUESTION 216



Refer to the exhibit. Which statement about the interface is true?

- A. The interface is down.
- B. The other side of the interface is set as access.
- C. The switch port command is missing from the configuration
- D. The interface needs no shutdown configured.

Answer: A

NEW QUESTION 217

When using EtherChannel misconfiguration guard, which technology is used to prevent this type of misconfiguration from affecting the network?

- A. STP
- B. port security
- C. LACP
- D. PAgP

Answer: A

NEW QUESTION 221

Refer to the exhibit.
 ****Exhibit is missing****

An engineer is configuring an etherchannel between two switches, he notices the error message on Switch 2 (error message channel-misconfiguring error), based on the output what is the problem:

- A. the etherchannel on the switch 1 using incorrect member port
- B. the etherchannel interface of switch 1 is not configured
- C. the etherchannel protocol on switch 1 is not correct
- D. the etherchannel interface of switch 2 is not configured

Answer: C

NEW QUESTION 223

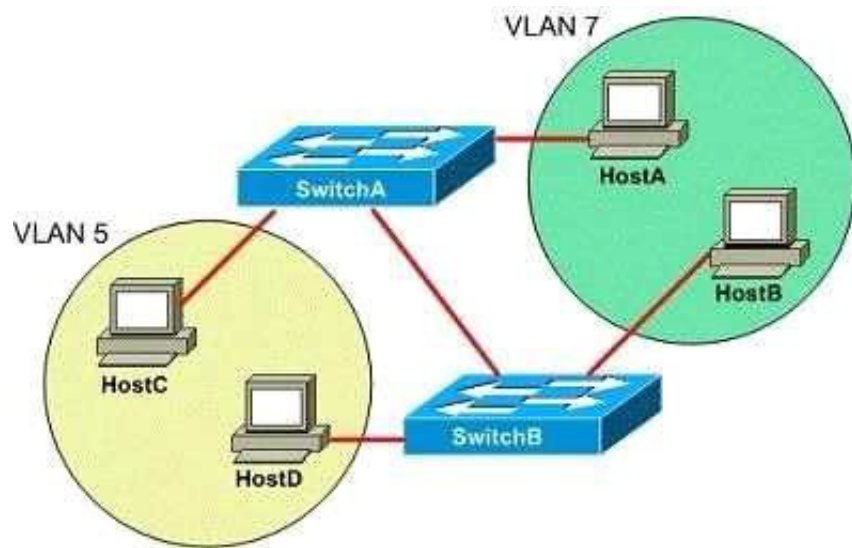
Behavior of an access port when a tagged packet is received other than the access VLAN value.

- A. Tag is removed and packet is forwarded of the VLAN mentioned in the tag.
- B. tag is removed and packet is forwarded on the VLAN of the access port
- C. Not Available
- D. packet is dropped

Answer: D

NEW QUESTION 224

You want to configure a switched internetwork with multiple VLANs as shown above. Which of the following commands should you issue on SwitchA for the port connected to SwitchB? (Select the best answer.)



- A. switchport mode trunk
- B. switchport access vlan 5
- C. switchport mode access vlan 5
- D. switchport trunk native vlan 5

Answer: A

NEW QUESTION 225

What is the effect of configuring the following command on a switch?
 Switch(config) # spanning-tree portfast bpdupfilter default

- A. If BPDUs are received by a port configured for PortFast, then PortFast is disabled and the BPDUs are processed normally.
- B. If BPDUs are received by a port configured for PortFast, they are ignored and none are sent.
- C. If BPDUs are received by a port configured for PortFast, the port transitions to the forwarding state.
- D. The command enables BPDU filtering on all ports regardless of whether they are configured for BPDU filtering at the interface level.

Answer: A

NEW QUESTION 229

Which two configurations can you apply to a port so that it tags traffic with VLAN 915? (Choose two.)

- A. interface GigabitEthernet0/0 switchport mode access switchport access vlan 915
- B. interface GigabitEthernet0/0 switchport mode trunkswitchport trunk encapsulation dot1q switchport trunk allowed vlan 915
- C. interface GigabitEthernet0/0 switchport mode access switchport voice vlan 915 switchport access vlan 915
- D. interface GigabitEthernet0/0.915 encapsulation dot1q 915
- E. interface GigabitEthernet0/0.915 switchport mode access switchport access vlan 915

Answer: BD

NEW QUESTION 233

What is cisco recommendation for RSPAN best practice?

- A. you should configure remote vlan first
- B. use different vlan for multiple/different switches
- C. use different portchannel

Answer: A

NEW QUESTION 234

Which IOS configuration command is required to configure a VLAN as a private VLAN?

- A. switch(config-vlan)# private-vlan common
- B. switch(config-vlan)# private-vlan private
- C. switch(config-vlan)# private-vlan primary
- D. switch(config-vlan)# private-vlan transparent

Answer: C

NEW QUESTION 238

Which two options are advantages of deploying VTPv3? (Choose two)

- A. It stores the VTP domain password securely as a SHA-1 hash
- B. It adds on FCS field at the end of each VTP frame for consistency checking
- C. It supports the propagation of private VLANs.
- D. It supports the use of AES to encrypt VTP messaging
- E. It can be configured to allow only one VTP server to make changes to the VTP domain

Answer: CE

NEW QUESTION 239

Which three features can be optimized by using SDM templates? (Choose three.)

- A. port security
- B. trunk
- C. VLAN
- D. access
- E. DHCP snooping
- F. routing

Answer: CDF

NEW QUESTION 243

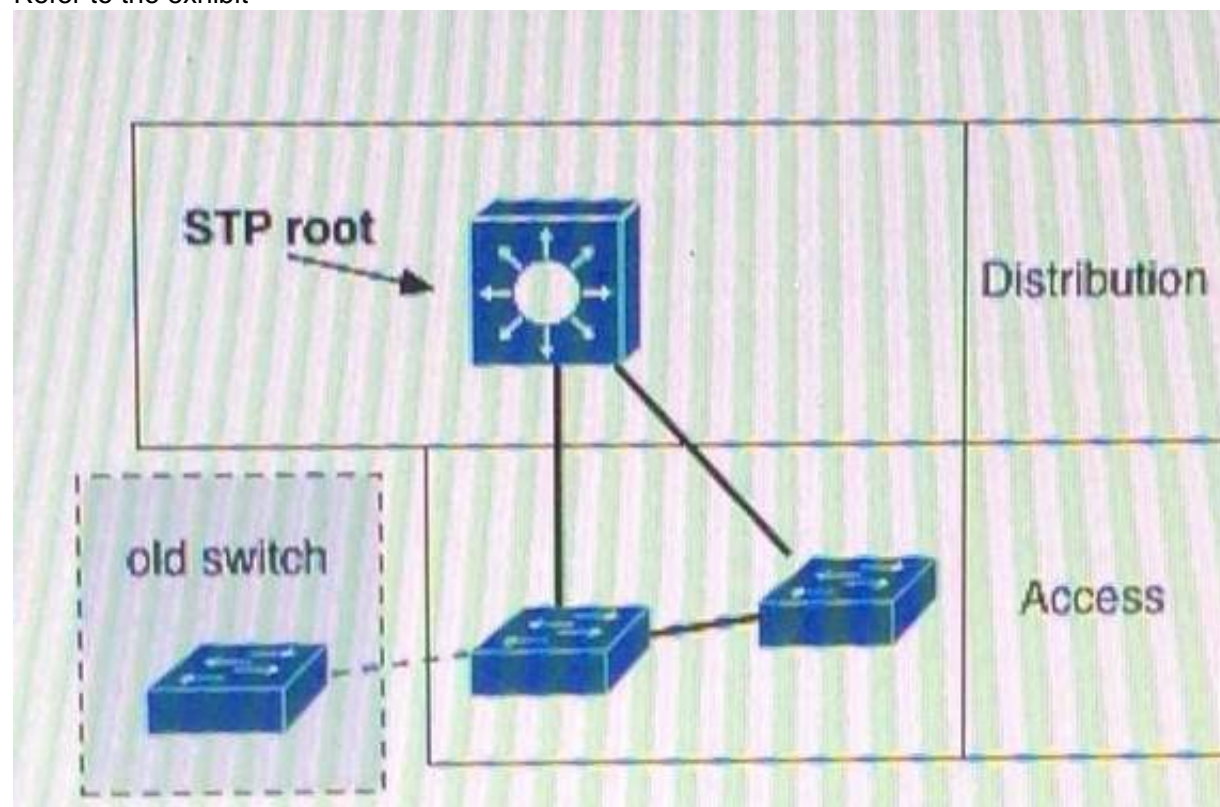
What happens spoofed packet or something like untrusted packet is detected? (Choose three)

- A. log
- B. deletes
- C. intercepts
- D. accepts
- E. discard

Answer: ACE

NEW QUESTION 247

Refer to the exhibit



A network engineer deployed an older switch with the same spanning-tree priority as the existing root, which caused a network outage. In which two locations should the Spanning Tree protocol root guard feature be implemented? (Choose two.)

- A. On the designated root switch downlinks to the access layer.
- B. On all of non-root switch facing ports of the access layer
- C. On the access layers root facing ports
- D. On Layer 3 boundaries in the distribution layer
- E. Globally on all network switches.

Answer: AB

NEW QUESTION 248

Which two statements about 802.1q are true? (choose two)

- A. It inserts a 4-byte tag field to the Ethernet frame.
- B. Each frame contains a 12-byte VLAN Identifier field.
- C. When it is enabled, the minimum Ethernet frame size is 68 bytes.
- D. Trunking devices add a 4-byte VLAN tag to all VLAN packets.
- E. The header is found within the Ethernet trailer.

Answer: AC

NEW QUESTION 253

A workstation technician moves a PC from one office desk to another. Before the move the PC has network connectivity. After the move, as the PC is plugged into the new network port, it loses network connectivity and the network switch port becomes error disabled. Which option can cause the issue?

- A. wrong VLAN
- B. wrong switch port mode
- C. port security
- D. speed issue

Answer: C

NEW QUESTION 254

What is the command for configuring root guard?

- A. (config) spanning-tree guard root
- B. (config-if) spanning-tree guard root

Answer: B

NEW QUESTION 255

Which two commands prune VLAN 10 from a switch interface? (Choose two.)

- A. switchport trunk allowed except vlan 10
- B. switchport trunk native vlan 10
- C. switchport trunk allowed remove vlan 10
- D. switchport trunk allowed vlan add 10
- E. no vlan 10

Answer: BC

NEW QUESTION 258

Which database about the switch database management template is true?

- A. The default template gives balance to all functions.
- B. The default template disables routing and supports the maximum number of unicast MAC addresses
- C. The default template maximizes system resources for access control list.
- D. The default template maximizes system resources for unicast routing.

Answer: A

NEW QUESTION 262

What happens if an interface within channel group is configure as SPAN destination?

- A. portchannel will forward traffic to source span
- B. will not be operational
- C. the link will be in error-disable

Answer: B

NEW QUESTION 267

Drag and drop the characteristics from the left to the matching STP mode on the right.

default STP mode

discarding port state

based on 802.1 w

maps VLANs to instances

based on IEEE 802.1s

based on IEEE 802.1D

PVST+

Rapid PVST+

MSTP

Answer:

Explanation:



NEW QUESTION 268

Which two options are two results of using the command spanning-tree vlan 50 root primary within a spanning-tree network under global configuration? (Choose two.)

- A. Spanning tree determines the priority of the current root for VLAN 50 and reduces the priority of the local switch to a lower value.
- B. The priority value for VLAN 50 is set to 4094 on the root while the local switch priority is set to 32768.
- C. The spanning-tree timers are reduced to improve the convergence time for VLAN 50.
- D. All ports that are configured on the current switch with VLAN 50 transition to designated ports.
- E. The switchport that is configured for VLAN 50 is the primary connection to the spanning-tree root switch.

Answer: AD

NEW QUESTION 269

Refer to the Exhibit:

```
Switch(config)#snmp-server enable traps mac-notification
Switch(config)#mac address-table notification threshold
Switch(config)#mac address-table notification threshold limit 60
Switch (config)#mac address-table notification mac-move
```

Which two statements correctly indicates when an SNMP trap is sent to the switch? (Choose Two)

- A. When a new workstation connects to port F0/1
- B. When 61 MAC address are in the switch
- C. When 61 percent of the Address table capacity is used
- D. When the switch loses power and reboots
- E. When the phone previously on Fa0/2 is now connect to Fa0/5

Answer: CE

NEW QUESTION 274

Which three functions does Dynamic ARP Inspection perform with invalid IP-to MAC address bindings? (Choose three.)

- A. accepts
- B. deletes
- C. discards
- D. bypasses
- E. intercepts
- F. logs

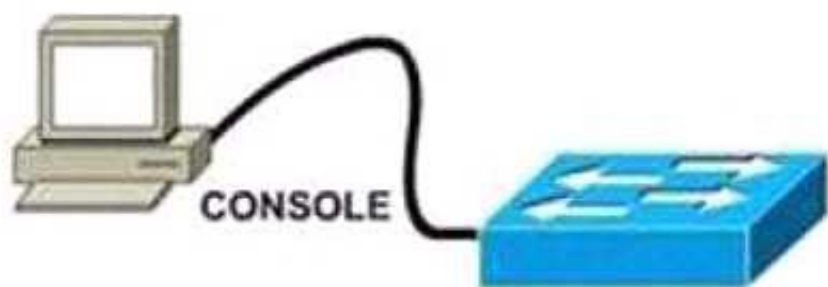
Answer: CEF

NEW QUESTION 275

SIMULATION

The headquarter office for a cement manufacturer is installing a temporary Catalyst 3550 in an IDF to connect 24 additional users. To prevent network corruption, it is important to have the correct configuration prior to connecting to the production network. It will be necessary to ensure that the switch does not participate in VTP but forwards VTP advertisements that are received on trunk ports.

Because of errors that have been experienced on office computers, all non-trunking interfaces should transition immediately to the forwarding state of Spanning tree. Also configure the user ports (all FastEthernet ports) so that the ports are permanently non-trunking.



Requirement:

You will configure FastEthernet ports 0/12 through 0/24 for users who belong to VLAN 20. Also all VLAN and VTP configurations are to be completed in global configuration mode as VLAN database mode is being deprecated by Cisco. You are required to accomplish the following tasks:

1. Ensure the switch does not participate in VTP but forwards VTP advertisements received on trunk ports.
2. Ensure all non-trunking interfaces (Fa0/1 to Fa0/24) transition immediately to the forwarding state of Spanning-Tree.
3. Ensure all FastEthernet interfaces are in a permanent non-trunking mode.
4. Place FastEthernet interfaces 0/12 through 0/24 in VLAN 20.

Answer:

Explanation: /Reference:

Console into the Switch Switch>enable Switch#configure terminal

Switch(config)#interface range fa0/1 – 24

Switch(config-if-range)#switchport mode access <<Make all FastEthernet interfaces into access mode. Switch(config-if-range)#spanning-tree portfast <<Enables the PortFast on interface.

Next, we need to assign FastEthernet ports 0/12 through 0/24 to VLAN 20. By default, all ports on the switch are in VLAN 1. To change the VLAN associated with a port, you need to go to each interface (or a range of interfaces) and tell it which VLAN to be a part of.

Switch(config-if-range)#interface range fa0/12 – 24

Switch(config-if-range)#switchport access vlan 20 <<Make these ports members of vlan 20 Switch(config-if-range)#exit

Next we need to make this switch in transparent mode. In this mode, switch doesn't participate in the VTP domain, but it still forwards VTP advertisements through any configured trunk links.

Switch(config)#vtp mode transparent Switch(config)#exit

Switch#copy running-config startup-config

NEW QUESTION 278

Which HSRP extension allows groups to share traffic loads?

- A. GLBP
- B. CHSRP
- C. MHSRP
- D. CGMP
- E. FHRP

Answer: C

NEW QUESTION 281

What do subordinate switches in a switch stack keep?

- A. Subordinate switches keep their own spanning trees for each VLAN that they support.
- B. Subordinate switches keep entire VLAN database
- C. Store running config all the switches

Answer: A

NEW QUESTION 286

Routers R1 and R2 are configured for HSRP as shown below: Router R1:

```
interface ethernet 0
```

```
ip address 20.6.2.1 255.255.255.0
```

```
standby 35 ip 20.6.2.21
```

```
standby 35 priority 100
```

```
interface ethernet 1
```

```
ip address 20.6.1.1.2 255.255.255.0
```

```
standby 34 ip 20.6.1.21 Router R2:
```

```
interface ethernet 0
```

```
ip address 20.6.2.2 255.255.255.0
```

```
standby 35 ip 20.6.2.21
```

```
interface ethernet 1
```

```
ip address 20.6.1.1.1 255.255.255.0
```

```
standby 34 ip 20.6.1.21
```

```
standby 34 priority 100
```

You have configured the routers R1 & R2 with HSRP. While debugging router R2 you notice very frequent HSRP group state transitions. What is the most likely cause of this?

- A. physical layer issues
- B. no spanning tree loops
- C. use of non-default HSRP timers

D. failure to set the command standby 35 preempt

Answer: A

NEW QUESTION 288

In a switch stack where is the the SDM template stored?

- A. All switches in stack
- B. Master switch
- C. Flash memory
- D. Another

Answer: B

NEW QUESTION 292

Refer to the exhibit. On the basis of the output of the show spanning-tree inconsistentports command, which statement about interfaces FastEthernet 0/1 and FastEthernet 0/2 is true?

SW1# show spanning-tree inconsistentports		
Name	Interface	Inconsistency

VLAN0001	FastEthernet0/ 1	Root Inconsistent
VLAN0001	FastEthernet0/2	Root Inconsistent
Number of inconsistent ports (segments) in the system : 2		

- A. They have been configured with the spanning-tree bpduguard disable command.
- B. They have been configured with the spanning-tree bpduguard enable command.
- C. They have been configured with the spanning-tree bpduguard disable command.
- D. They have been configured with the spanning-tree bpduguard enable command.
- E. They have been configured with the spanning-tree guard loop command.
- F. They have been configured with the spanning-tree guard root command.

Answer: F

NEW QUESTION 295

Which describes the default load balacing scheme used by the Gateway Load Balancing Protocol (GLBP)?

- A. Per host using a strict priority scheme
- B. Per session using a round-robin scheme
- C. Per session using a strict priority scheme
- D. Per GLBP group using a strict priority scheme
- E. Per host basis using a round robin-scheme
- F. Per GLBP group using a round-robin scheme

Answer: E

NEW QUESTION 300

HSRP has been configured between two Company devices. Which of the following describe reasons for deploying HSRP? (Choose three)

- A. HSRP provides redundancy and fault tolerance.
- B. HSRP allows one router to automatically assume the function of the second router if the second router fails.
- C. HSRP allows one router to automatically assume the function of the second router if the second router starts.
- D. HSRP provides redundancy and load balancing.

Answer: ABD

NEW QUESTION 302

What is needed for Virtual Switching System "VSS"?

- A. portchannel
- B. trunk
- C. Virtual Switching Link "or VSL"
- D. Virtual trunk

Answer: C

NEW QUESTION 305

Refer to the output below.

Which statement about the current configuration on port GigabitEthernet2/0/1 is true?

InterfaceGigabitEth emet2/0/1 description to mail room M 13-57- 050

switchport access vlan 700 switchport trunk allowed vlan 200,300,700

- A. It is a trunk port and the native VI AN is VLAN1
- B. It is a trunk port and the native VLAN is VLAN 700
- C. It is an access port configured for a phone and a PC
- D. It is an access port in VI AN /700

Answer: A

NEW QUESTION 310

Which option is a Cisco recommended KSPAN configuration practice?

- A. Use a different RSPAN VLAN for each session it configuring RSPAN on multiple switches.
- B. Use only one destination port for each RSPAN session.
- C. Define an RSPAN VLAN before configuring an RSPAN source or destination session.
- D. Assign access ports to an RSPAN VLAN like any other campus VLAN

Answer: C

NEW QUESTION 314

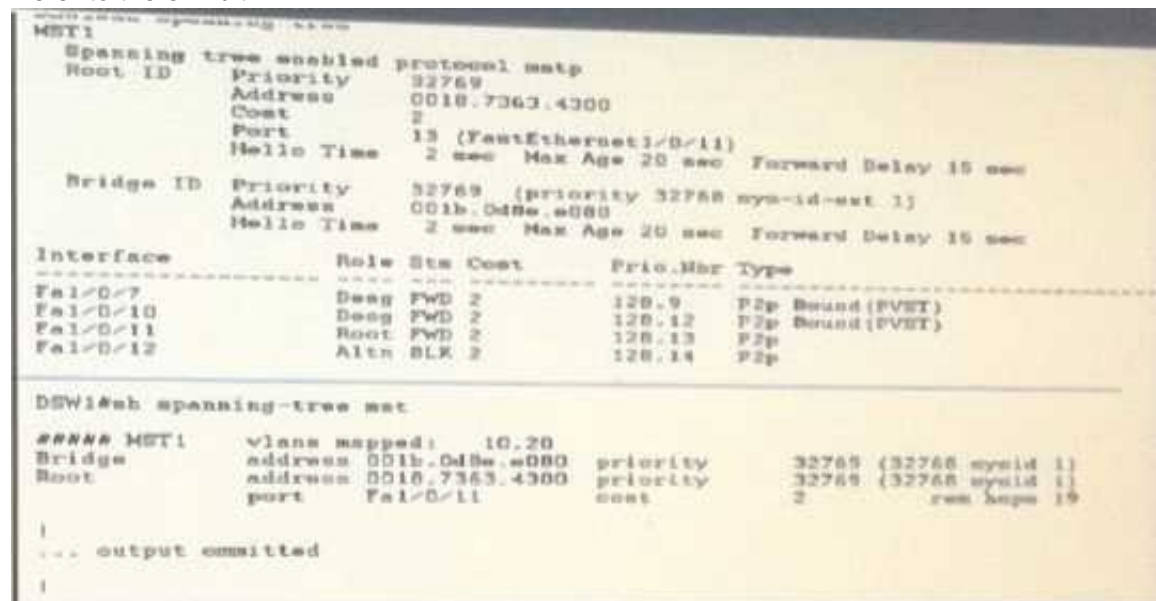
Where can NetFlow export data for long term storage and analysis?

- A. another network device
- B. flat file
- C. syslog
- D. collector

Answer: D

NEW QUESTION 317

Refer to the exhibit.



```
DSW1#show spanning-tree mst
MST1
Spanning tree enabled protocol mstp
Root ID    Priority    32768
Address    001b.7363.4300
Cost       2
Port       13 (FastEthernet1/0/11)
Hello Time 2 sec Max Age 20 sec Forward Delay 15 sec

Bridge ID   Priority    32768 (priority 32768 sys-id-ext 1)
Address    001b.0d8e.e080
Hello Time 2 sec Max Age 20 sec Forward Delay 15 sec

Interface   Role Sts Cost      Prio.Nbr Type
-----
Fa1/0/7     Desg Fwd 2        128.9    P2p Bound (PVST)
Fa1/0/10    Desg Fwd 2        128.12   P2p Bound (PVST)
Fa1/0/11    Root Fwd 2        128.13   P2p
Fa1/0/12    Altn BLK 2        128.14   P2p

DSW1#sh spanning-tree mst
##### MST1
vllans mapped: 10,20
Bridge address 001b.0d8e.e080 priority 32768 (32768 sysid 1)
Root address 001b.7363.4300 priority 32768 (32768 sysid 1)
port Fa1/0/11 cost 2 root hops 19

... output omitted
```

Which two commands ensure that DSW1 becomes root bridge for VLAN 10 and 20? (Choose two.)

- A. spanning-tree mstp 1 priority 0
- B. spanning-tree mst 1 root primary
- C. spanning-tree mst vlan 10,20 priority root
- D. spanning-tree mst 1 priority 4096
- E. spanning-tree mst 1 priority 1
- F. spanning-tree mstp vlan 10,20 root primary

Answer: BD

NEW QUESTION 319

What SPAN configuration is required to enable on a switch?

- A. A monitor VLAN is created for the SPAN traffic.
- B. Configure a source and destination port
- C. Disable VTP pruning on trunk links
- D. NA

Answer: B

NEW QUESTION 321

A network engineer is considering implementing UDLD throughout the network. Which option must the network engineer consider?

- A. UDLD works at Layer 1 of the OSI model.
- B. UDLD is already enabled by default on all ports on Cisco switches.
- C. UDLD aggressively disables the port after eight failed retries to connect to neighbor.
- D. UDLD is an IEEE standard that can be configured on non-Cisco devices.

Answer: C

NEW QUESTION 322

When using EtherChannel reconfiguration guard, which technology is used to prevent this type of reconfiguration from affecting the network?

- A. STP
- B. port security
- C. LACP
- D. PAgP

Answer: A

NEW QUESTION 327

Which command enables root guard on a Cisco switch at location id:28468780 ?

- A. Switch (config)#spanning-tree guard root
- B. Switch (config-if)#spanning-tree guard-root
- C. Switch (config-if)#spanning-tree root guard
- D. Switch (config-if)#spanning-tree guard root
- E. Switch (config)#spanning-tree root guard

Answer: D

NEW QUESTION 330

Refer to the exhibit.

Missing Exhibit

Which statement describes the result if a switch that is running PVST+ is added to this network?

- A. Spanning tree is disabled automatically on the network
- B. Spanning tree continues to operate in Rapid PVST+ on DSW2 and the new switch operates in PVST+
- C. Both switches operate in the PVST+ mode
- D. Both switches operate in the Rapid PVST+ mode

Answer: B

NEW QUESTION 331

Which switch is chosen as the stack master during a stack master election or re-election?

- A. the switch with the highest stack member ID
- B. the switch with the lowest stack member ID
- C. the switch with the lowest stack member priority value
- D. the switch with the highest stack member priority value

Answer: D

NEW QUESTION 332

Which two statements about default FHRP behavior are true? (Choose two)

- A. A backup GLBP active virtual gateway can become active only if the current active virtual gateway fails.
- B. Preemption is enabled by default.
- C. Unless specifically Configured, the priority of an HSRP router is 200.
- D. A standby HSRP router becomes active if it has a higher priority than the priority of the current active router.
- E. A VRRP backup virtual router becomes the master router if its priority is higher than the priority of the current master router.

Answer: AE

NEW QUESTION 335

Which of the following HSRP router states does an active router enter when it is preempted by a higher priority router? (Select the best answer.)

- A. active
- B. speak
- C. learn
- D. listen
- E. init
- F. standby

Answer: B

NEW QUESTION 339

Drag and drop the GLBP components from the left onto the correct functions on the right.

ARP	method of learning the MAC address of a network device
AVF	value that determines the role of the router in a GLBP environment
AVG	assigns virtual MAC addresses
gateway priority	forwards packets sent to an assigned virtual MAC address

Answer:

Explanation:

ARP	ARP
AVF	gateway priority
AVG	AVG
gateway priority	AVF

NEW QUESTION 340

A switch has been configured with the Vlan dot1 q tag native command. Which statement describes what the switch does with untagged frames that it receives on a trunked interface?

- A. It drops the untagged frames.
- B. Untagged frames are forwarded via the native VLAN
- C. The trunked port is put m err-disable state.
- D. Untagged frames are forwarded via the default VLAN

Answer: A

NEW QUESTION 341

Which statement is correct about 802.1Q trunking?

- A. Both switches must be in the same VTP domain.
- B. The encapsulation type of both ends of the trunk does not have to match.
- C. The native VLAN on both ends of the trunk must be VLAN 1.
- D. 802.1Q trunking can only be configured on a Layer 2 port.
- E. In 802.1Q trunking, all VLAN packets are tagged on the trunk link, except the native VLAN.

Answer: E

NEW QUESTION 344

A network engineer is considering implementing UDLD throughout the network. Which option must the network engineer consider?

- A. UDLD work at Layer 1 of the OSI model.
- B. UDLD aggressively disables the port after eight failed retries to connect to neighbor.
- C. UDLD is already enabled by default on all ports on Cisco switches.
- D. UDLD is an IEEE standard that can be configured on non-Cisco devices.

Answer: B

NEW QUESTION 347

In which two ways can a port respond to a port-security violation? (Choose two.)

- A. The port enters the en-disabled state

- B. The Security Violation counter is incremented and the port sends an SNMP trap
- C. The Security Violation counter is incremented and the port sends a critical syslog message to the console
- D. The port triggers an EEM script to notify support staff and continues to forward traffic normally
- E. The port immediately begins to drop all traffic.
- F. The port enters the shutdown state.

Answer: AB

NEW QUESTION 348

Refer to the exhibit.

```
DSW1#sh vtp status
VTP Version                : running VTP1 (VTP2 capable)
Configuration Revision      : 2
Maximum VLANs supported locally : 1005
Number of existing VLANs    : 7
VTP Operating Mode          : Client
VTP Domain Name             : DALLAS
VTP Pruning Mode            : Disabled
VTP V2 Mode                  : Disabled
VTP Traps Generation        : Disabled
MD5 digest                  : 0xF1 0xAC 0x5E 0xCF 0xF7 0xEE 0x9E 0xD6
Configuration last modified by 10.101.101.11 at 3-1-93 23:57:30

DSW2#sh vtp status
VTP Version                : running VTP1 (VTP2 capable)
Configuration Revision      : 3
Maximum VLANs supported locally : 1005
Number of existing VLANs    : 7
VTP Operating Mode          : Server
VTP Domain Name             : DALLAS
VTP Pruning Mode            : Disabled
VTP V2 Mode                  : Disabled
VTP Traps Generation        : Disabled
MD5 digest                  : 0xE5 0x4D 0xC1 0xF0 0x8F 0xF1 0x4B 0x8C
Configuration last modified by 10.101.101.11 at 3-1-93 23:50:31

DSW2#sh spanning-tree mst configuration
Name      [DALLAS]
Revision  3      Instances configured 3

Instance  Vlans mapped
-----
0         1-9,11-19,21-29,41-4094
1         10,20
2         30-40
-----
```

DSW1 should share the same MST region with switch DSW2. Which statement is true?

- A. Configure DSW1 with the same version number, and VLAN-to-instance mapping as shown on DSW2.
- B. DSW2 uses the VTP server mode to automatically propagate the MST configuration to DSW1.
- C. DSW1 automatically inherits MST configuration from DSW2 because they have the same domain name.
- D. Configure DSW1 with the same region name, revision number, and VLAN-to-instance mapping as shown on DSW2.
- E. DSW1 is in VTP client mode with a lower configuration revision number, therefore, it automatically inherits MST configuration from DSW2.

Answer: D

NEW QUESTION 353

Which two statements about Cisco StackWise are true? (Choose two.)

- A. Each stack identifies a stack master and a backup stack master
- B. It supports both homogeneous and mixed stacks.
- C. The LAN base feature set is supported on mixed stacks
- D. Stacks running the LAN base feature set support Layer 3 features
- E. It supports multiple switches in a stack

Answer: BE

NEW QUESTION 358

You administer a network that uses two routers, R1 and R2, configured as an HSRP group to provide redundancy for the gateway. Router R1 is the active router and has been configured as follows:

```
R1#configure terminal
R1(config)#interface fa0/0
R1(config-if)#ip address 10.10.0.5 255.255.255.0
R1(config-if)#standby 1 priority 150
R1(config-if)#standby preempt delay minimum 50
R1(config-if)#standby 1 track interface fa0/2 15
R1(config-if)#standby 1 ip 10.10.0.20
```

Which of the following describes the effect the "standby preempt delay minimum 50" command will have on router R1? (Select the best answer.)

- A. The HSRP priority for router R1 will increase to 200.
- B. Router R1 will become the standby router if the priority drops below 50.
- C. The HSRP priority for router R1 will decrease to 50 points when Fa0/2 goes down.
- D. Router R1 will wait 50 seconds before attempting to preempt the active router.

Answer: D

NEW QUESTION 362

VLAN maps have been configured on switch R1. Which of the following actions are taken in a VLAN map that does not contain a match clause?

- A. Implicit deny feature at end of list.
- B. Implicit deny feature at start of list.
- C. Implicit forward feature at end of list
- D. Implicit forward feature at start of list.

Answer: A

NEW QUESTION 363

If router R1 interlace Etherne0/1 goes down and recovers, which of the statement regarding HSRP priority is true?

- A. The interface will nave the priority documented by 40 for HSRP group 1
- B. The interface will nave the priority documented by 60 for HSRP group 1
- C. The interface will have its current priority incremented by 40 for HSRP group 1
- D. The interface will have its current priority incremented by 60 for HSRP group 1
- E. The interface will default to the a priority of 100 for HSRP group 1

Answer: C

NEW QUESTION 365

Which command maximizes system resources for ACL s'?

- A. Sdm prefer default
- B. Sdm prfer routing
- C. Sdm prefer access
- D. Sdm prefer vlan

Answer: C

NEW QUESTION 369

Which switchport feature will block the packet with unknown MAC address from sending it via port.

- A. switchport protect
- B. switchport block unicast
- C. switchport portfast
- D. packet with unknown MAC will be dropped

Answer: B

NEW QUESTION 370

When a Cisco Catalyst switch that is configured in VTP server mode is first booted, which two VLAN ranges are loaded on the switch?

- A. all VLAN are in the VLAN database.
- B. VLANs greater than 1005 in the startup-config file
- C. the first 1005 VLANs in the VLAN database file
- D. the first 1005 VLANs in the startup-config file
- E. VLANs greater than 1005 in the VLAN database file

Answer: BD

NEW QUESTION 371

What is the default mode for LACP EtherChannel when configured?

- A. On
- B. Active
- C. Passive
- D. Desirable
- E. Off

Answer: C

NEW QUESTION 372

Which two statements are true about recommended practices that are to be used in a local VLAN solution design where layer 2 traffic is to be kept to a minimum? (Choose two.)

- A. Routing should occur at the access layer if voice VLANs are utilize

- B. Otherwise, routing should occur at the distribution layer.
- C. Routing may be performed at all layers but is most commonly done at the core and distribution layers.
- D. Routing should not be performed between VLANs located on separate switches.
- E. VLANs should be local to a switch.
- F. VLANs should be localized to a single switch unless voice VLANs are being utilized.

Answer: BD

NEW QUESTION 376

To provide security, a service provider configures various private VLANs in its backbone network infrastructure to prevent certain VLAN communication to each other. Which version of VTP supports the use of private VLANs?

- A. Version 1
- B. Version 3
- C. VTP does not support private VLANs
- D. Version 2

Answer: B

NEW QUESTION 379

In regards to Cisco Virtual Switching System which technology is needed between two switches for them to act as one network element and share control information and data traffic?

- A. trunk
- B. virtual port channel
- C. EtherChannel
- D. virtual switch link

Answer: D

NEW QUESTION 380

What condition was match during etherchannel configuration.

- A. Spanning tree port priority
- B. Spanning tree cost
- C. Interface Description
- D. Trunk mode
- E. Trunk allow vlan

Answer: DE

NEW QUESTION 382

Which keyword must you use with the storm-control command to set both upper and lower thresholds for unicast, multicast, and broadcast traffic?

- A. pps
- B. level
- C. set
- D. limit

Answer: B

NEW QUESTION 385

Which two types of threshold can you configure for tracking objects? (Choose two.)

- A. weight
- B. bandwidth
- C. MTU
- D. percentage
- E. administrative distance 15
- F. delay

Answer: AD

NEW QUESTION 389

Drag and drop the characteristic from the left to the matching Layer 2 protocol on the right.

- sends topology change notification
- Default time between protocol frames is 60 seconds.
- uses multicast address 01-80-C2-00-00-0E
- Default time between protocol frames is 30 seconds.
- uses multicast address 0100.0ccc.cccc
- supports IEEE 802.2 and 802.3 encapsulation

CDP

LLDP

Answer:

Explanation:

CDP

uses multicast address 0100.0ccc.cccc

supports IEEE 802.2 and 802.3 encapsulation

Default time between protocol frames is 60 seconds.

LLDP

sends topology change notification

uses multicast address 01-80-C2-00-00-0E

Default time between protocol frames is 30 seconds.

NEW QUESTION 392

When a private VLAN is configured, which mode must be configured as a router facing port?

- A. isolated
- B. promiscuous
- C. community
- D. host

Answer: B

NEW QUESTION 397

Refer to the exhibit. Based upon the output of show vlan on switch CAT2, what can we conclude about interfaces Fa0/13 and Fa0/14?


```
CAT2#show vlan
```

VLAN	Name	Status	Ports
1	default	active	Fa0/1, Fa0/2, Fa0/3, Fa0/4 Fa0/5, Fa0/6, Fa0/7, Fa0/8 Fa0/9, Fa0/10, Fa0/11, Fa0/12 Fa0/15, Fa0/16, Fa0/17, Fa0/18 Fa0/19, Fa0/20, Fa0/21, Fa0/22 Fa0/23, Fa0/24, Gi0/1, Gi0/2
2	VLAN0002	active	
3	VLAN0003	active	
4	VLAN0004	active	
5	VLAN0005	active	
1002	fddi-default	act/unsup	
1003	trcrf-default	act/unsup	
1004	fddinet-default	act/unsup	
1005	trbrf-default	act/unsup	

- A. That interfaces Fa0/13 and Fa0/14 are in VLAN 1
- B. That interfaces Fa0/13 and Fa0/14 are down
- C. That interfaces Fa0/13 and Fa0/14 are trunk interfaces
- D. That interfaces Fa0/13 and Fa0/14 have a domain mismatch with another switch
- E. That interfaces Fa0/13 and Fa0/14 have a duplex mismatch with another switch

Answer: C

NEW QUESTION 402

Which three characteristics of AAA with RADIUS are true? (Choose three.)

- A. It runs on TCP port 49
- B. It is a standards-based implementation
- C. It runs on UDP port 1812.
- D. It uses a client-private cloud architecture
- E. It uses a client-server architecture
- F. It is a Cisco-proprietary implementation

Answer: BCE

NEW QUESTION 404

Refer to the exhibit.

```
Switch2#
01:25:08: %PM-4-ERR_DISABLE: channel-misconfig error detected on
Fa0/23, putting Fa0/23 in err-disable
state
01:25:08: %PM-4-ERR_DISABLE: channel-misconfig error detected on
Fa0/24, putting Fa0/24 in err-disable
state
Switch2#

Switch1#show etherchannel summary

!output omitted

Group  Port-channel  Protocol  Ports
-----+-----+-----+-----
1      Po2(SD)          LACP      Fa1/0/23(D)

Switch2#show etherchannel summary

!output omitted

Group  Port-channel  Protocol  Ports
-----+-----+-----+-----
1      Po1(SD)          -         Fa0/23(D)  Fa0/24(D)
```

An engineer is configuring EtherChannel between two switches and notices the console message on switch 2. Based on the output, which option describes the reason for this error?

- A. Switch 1 does not have enough member ports configured.
- B. Switch 2 has too many member ports configured.
- C. The port channel interface numbers do not match.
- D. The EtherChannel protocols do not match.

Answer: D

NEW QUESTION 407

Which Cisco Stack Wise feature is supported?

- A. using different versions of the Cisco IOS on each switch
- B. using different SDM templates on each switch
- C. using same software feature set on all members
- D. using mixed software feature set on all members

Answer: C

NEW QUESTION 411

Which three statements are true of a default HSRP configuration? (Choose three.)

- A. The Standby hello time is 2 seconds.
- B. Two HSRP groups are configured.
- C. The Standby track interface priority decrement is 10.
- D. The Standby hold time is 10 seconds
- E. The Standby priority is 100.
- F. The Standby delay is 3 seconds.

Answer: CDE

NEW QUESTION 412

Which information in a RADIUS access-request packet is encrypted?

- A. username and password
- B. entire header
- C. entire payload
- D. password

Answer: A

NEW QUESTION 415

Which of the following commands can be issued without interfering with the operation of loop guard?

- A. Switch(config-if)#spanning-tree guard root
- B. Switch(config-if)#spanning-tree portfast
- C. Switch(config-if)#switchport mode trunk
- D. Switch(config-if)#switchport mode access

Answer: C

NEW QUESTION 419

What is the virtual mac address of HSRP group 1?

- A. 0000 0C07 ac02
- B. 4000 0000 0010
- C. 0000 0c07 ac01
- D. 4000 0000 ac01
- E. 4000 0000 ac02
- F. 0000 0c07 0010

Answer: B

NEW QUESTION 421

Which three responses from a RADIUS server are valid? (Choose three.)

- A. REJECT
- B. CHALLENGE
- C. ACCEPT
- D. UPDATE PASSWORD
- E. CONFIRM

Answer: ABC

NEW QUESTION 425

Which layer private VLAN partition the broadcast domain?

- A. Layer 1
- B. Layer 2
- C. Layer 3
- D. Layer 4

Answer: B

NEW QUESTION 428

Refer to the exhibit.

```
switch#sh run
Building configuration...

Interface FastEthernet0/1
  description Uplink to Core
  switchport
  switchport trunk encapsulation dot1q
  switchport trunk allowed vlan 1-90,100-199,200-900,1000-4000
  switchport mode trunk
```

A network engineer changes the default native VLAN to VLAN 999. After applying the settings on the uplinks to the core switches, the switch control traffic, such as CDP and VTP, is no longer working. The standard configuration is used for each uplink. What is wrong with the configuration?

- A. The interface is administratively down.
- B. The encapsulation type is incorrect.
- C. The switchport mode trunk command should be first in the output.
- D. The native VLAN is not present on the trunk.
- E. The control traffic must be manually enabled on the new native VLAN.

Answer: D

NEW QUESTION 432

The following command was issued on a router that is being configured as the active HSRP router.

```
standby ip 10.2.1.1
```

Which statement is true about this command?

- A. This command will not work because the HSRP group information is missing
- B. The HSRP MAC address will be 0000 0c07 ac00
- C. The HSRP MAC address will be 0000 0c07 ac01.
- D. The HSRP MAC address will be 0000.070c ad01.
- E. This command will not work because the active parameter is missing

Answer: B

NEW QUESTION 434

Which two statements about VRRP are true? (Choose two.)

- A. Authentication commands must be entered under the interface.
- B. It sends advertisements to multicast address 224.0.0.9.
- C. It supports MD5 and IP sec authentication.
- D. It can use an interface IP address as the virtual IP address.
- E. It sends advertisements to multicast address 224.0.0.18.
- F. It is a Cisco proprietary protocol

Answer: AE

NEW QUESTION 439

What action should a network administrator take to enable VTP pruning on an entire management domain?

- A. Enable VTP pruning on any client switch in the domain.
- B. Enable VTP pruning on every switch in the domain.
- C. Enable VTP pruning on any switch in the management domain.
- D. Enable VTP pruning on a VTP server in the management domain.

Answer: D

NEW QUESTION 444

HSRP was implemented and configured on two switches while scheduled network maintenance was performed.

```
hostname Switch1
interface Vlan10
ip address 172.16.10.32 255.255.255.0
no ip redirects
standby 1 ip 172.16.10.110
standby 1 timers 1 5
standby 1 priority 130
-----
hostname Switch2
interface Vlan10
ip address 172.16.10.33 255.255.255.0
no ip redirects
standby 1 ip 172.16.10.110
standby 1 timers 1 5
standby 1 priority 120
```

After the two switches have finished rebooting, you notice via show commands that Switch2 is the HSRP active router. Which two items are most likely the cause of Switch1 not becoming the active router? (Choose two)

- A. booting delays
- B. standby group number does not match VLAN number
- C. IP addressing is incorrect
- D. preemption is disabled
- E. incorrect standby timers
- F. IP redirect is disabled

Answer: AD

NEW QUESTION 447

Which statement is true about RSTP topology changes?

- A. Any change in the state of the port generates a TC BPDU.
- B. Only nonedge ports moving to the forwarding state generate a TC BPDU.
- C. If either an edge port or a nonedge port moves to a block state, then a TC BPDU is generated.
- D. Only edge ports moving to the blocking state generate a TC BPDU.
- E. Any loss of connectivity generates a TC BPDU.

Answer: B

NEW QUESTION 450

Which two statements about SDM templates are true?

- A. They are used to allocate system resources
- B. Changing the SDM template will not disturb switch operation.
- C. You can verify the SDM template that is in use with the show sdm prefer command

Answer: AC

NEW QUESTION 454

If a switch stack is configured to use SDM templates, where are the templates stored?

- A. stack master
- B. TFTP server
- C. flash memory
- D. all stack members

Answer: A

NEW QUESTION 457

Which two combinations of Ether Channel modes support the formation of an EtherChannel? (Choose two.)

- A. desirable, passive
- B. desirable, desirable
- C. active, passive
- D. passive, passive
- E. active, desirable

Answer: BC

NEW QUESTION 461

An enterprise network has port security sticky enabled on all access ports. A network administrator moves a PC from one office desk to another. After the PC is moved, the network administrator clears the port security on the new network switch port connecting to the PC, but the port keeps going back into err-disabled mode. Which two factors are possible causes of this issue? (Choose two)

- A. Port security sticky exists on the new network switch port.
- B. Port security sticky is disabled on the new network switch port.
- C. Port security must be disabled on all access ports.
- D. Port security is still enabled on the older network switch port.
- E. Port security sticky is still enabled on the older network switch port.

Answer: AE

NEW QUESTION 462

What is the benefit of UDLD?

- A. provides backup for fiber
- B. help in preventing loops
- C. removes loops
- D. determines switch path

Answer: B

NEW QUESTION 465

Which two operational attributes can be checked for EtherChannel ports that are in err-disabled state? (Choose two.)

- A. Port mode
- B. Port cost
- C. Duplex
- D. DTP
- E. VLAN

Answer: AE

Explanation: Topic 4, Exam Set D (NEW)

NEW QUESTION 468

Which component does the GLBP client cache store for each host of a particular GLBP group?

- A. IP address
- B. MAC address
- C. VLAN
- D. Token ring
- E. DCSP

Answer: B

NEW QUESTION 472

Which statement about VSPAN is true?

- A. It can monitor ingress and egress traffic on the source VLAN.
- B. It can monitor token ring VLANs.
- C. It sends all VLAN traffic to the destination port regardless of the VLAN's status.
- D. It can monitor destination port traffic that belongs to a source VLAN

Answer: D

NEW QUESTION 476

in a Cisco StackWise Virtual environment, which planes on the component devices are virtually combined in the common logical switch?

- A. management and data only
- B. control and data only
- C. control and management only
- D. control, data, and management

Answer: C

NEW QUESTION 480

Which AAA authorization method uses a vendor-neutral directory information protocol?

- A. LDAP
- B. TACACS+
- C. RADIUS
- D. Kerberos

Answer: C

NEW QUESTION 485

Refer to the exhibit.

```
switch#show sdm prefer
The current template is "desktop vlan" template.
The selected template optimizes the resources in
the switch to support this level of features for
8 routed interfaces and 1024 VLANs.

number of unicast mac addresses:      12K
number of igmp groups:                1K
number of multicast routes:           0
number of unicast routes:             0
number of policy based routing aces:   0
number of qos aces:                   512
number of security aces:              1K
```

You change a switch SDM template to maximize the number of supported MAC addresses. You notice that the switch routing performance has been significantly degraded. Which action do you take to correct the problem?

- A. Configure the sdm prefer routing command
- B. Execute the clear ip route * command to reset the routing table.
- C. Configure the sdm prefer default command
- D. Configure the sdm prefer vlan command.

Answer: C

NEW QUESTION 486

Which two commands display the VLANs that are present in the VLAN database? (Choose two)

- A. show vlan brief
- B. show running-config
- C. show vlan
- D. show vlan databas
- E. show vlan id

Answer: AC

NEW QUESTION 487

Drag the description from the left to add on appropriate section of Port Cost / Switch Port Priority / Port Priority

- multiple of 4096
- 8 default is being the interface value
- lower the better
- multiple of 16
- range 1 - 200k (200,000)
- default value is 128

Port Cost

Switch Port Priority

Switch Priority

Answer:

Explanation:

Port Cost

8 default is being the interface value

range 1 - 200k (200,000)

Switch Port Priority

default value is 128

multiple of 16

Switch Priority

lower the better

multiple of 4096

- A. STP is disabled on a destination port when a SPAN monitor session is active.
- B. STP is disabled on trunk ports carrying the SPAN VLAN.
- C. A designated SPAN source port maintains its STP learning status.
- D. Designated SPAN source ports direct traffic to the root bridge of STP.

Answer: A

NEW QUESTION 494

Which feature is enabled automatically when you configure HSRP on an interface?

- A. ICMP redirect messages
- B. HSRP tracking
- C. IGMP snooping
- D. HSRP preemption

Answer: A

NEW QUESTION 496

Which two Criteria must be met to support SSO redundancy in a Cisco StackWise environment? (Choose two)

- A. The two switches must use the same license type.
- B. The software version can be different between switches.
- C. Both switches must be in the same StackWise logical group.
- D. You must manually configure the role of each switch.
- E. The two switches must use the same StackWise Virtual Configuration.

Answer: AE

NEW QUESTION 498

Refer to the exhibit.

```
FastEthernet2/0/47 - Group 1
  State is Active
    7 state changes, last state change 00:00:19
  Virtual IP address is 10.1.1.1
  Active virtual MAC address is 0000.0c07.ac01
    Local virtual MAC address is 0000.0c07.ac01 (v1 default)
  Hello time 3 sec, hold time 10 sec
    Next hello sent in 1.616 secs
  Authentication MD5, key-string "cisco"
  Preemption enabled
  Active router is local
  Standby router is 10.1.1.3, priority 100 (expires in 9.455 sec)
  Priority 255 (configured 255)
  IP redundancy name is "hsrp-Fa2/0/47-1" (default)
```

Which two statements about the network environment of the device that generated this output are true? (Choose two.)

- A. The default hello and hold timer values are in use.
- B. The standby router can take the active HSRP if it fails to receive a hello packet from the active router within 1.616 seconds.
- C. The priority value of the HSRP group is 1.
- D. HSRP version 2 is in use.
- E. The standby router can take the active HSRP role if it fails to receive a hello packet from the active router within 10 seconds.

Answer: AE

NEW QUESTION 499

Drag and drop the statements about SPAN source and destination ports from the left onto the correct port types on the right

Its original configuration is overwritten by the SPAN configuration

It can be monitored as a bundled logical port or as individual physical ports

It can be trunk or an access port

It acts as the monitoring port

It is not supported as part of a VLAN

Multiple VLANs can be included in a single session

Source Port

Destination Port

Answer:

Explanation:

Source Port

It acts as the monitoring port

It can be monitored as a bundled logical port or as individual physical ports

Multiple VLANs can be included in a single session

Destination Port

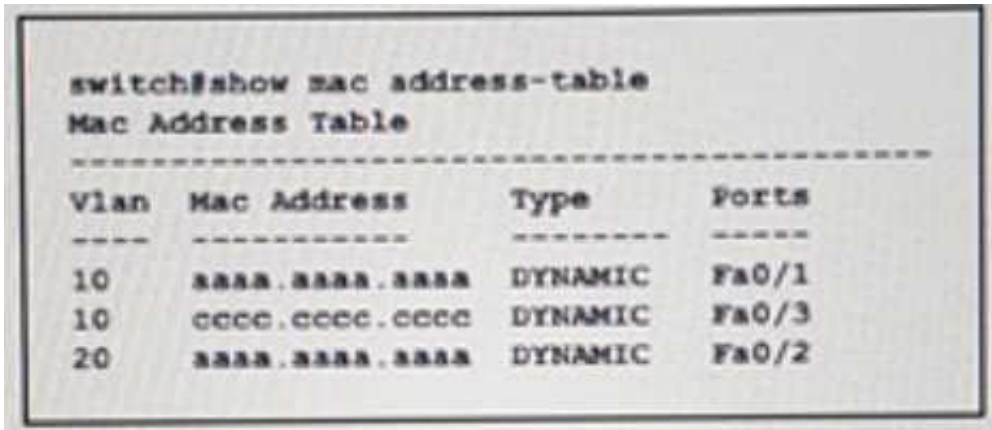
It can be trunk or an access port

It is not supported as part of a VLAN

Its original configuration is overwritten by the SPAN configuration

NEW QUESTION 502

Refer to the exhibit.



Which two statements about the network environment are true? (Choose two)

- A. The two aaaa.aaaa.aaaa MAC address entries must be from the same VLAN
- B. Interfaces Fa0/a and Fa0/3 cannot communicate via Layer 2 switching
- C. Interfaces Fa0/1 and Fa0/2 cannot communicate via Layer 2 switching
- D. The two aaaa.aaaa.aaaa MAC address entries must be from different VLANs
- E. Interfaces Fa0/2 and Fa0/3 can communicate via Layer 2 switching.

Answer: CD

NEW QUESTION 507

The central offices for a footwear distributor are enhancing their wiring closets with Layer3 switches. The new distribution-layer switch has been installed and a new access-layer switch cabled to it. Your task is to configure VTP to share VLAN information from the distribution-layer switch to the access-layer devices. Then, it is necessary to configure interVLAN routing on the distribution-layer switch to route traffic between the different VLANs that are configured on the access-layer switches; however, it is not necessary for you to make the specific VLAN port assignments on the access-layer switches. Also, because VLAN database mode is being deprecated by Cisco, all VLAN and VTP configurations are to be completed in the global configuration mode. Please reference the following table for the VTP and VLAN information to be configured:

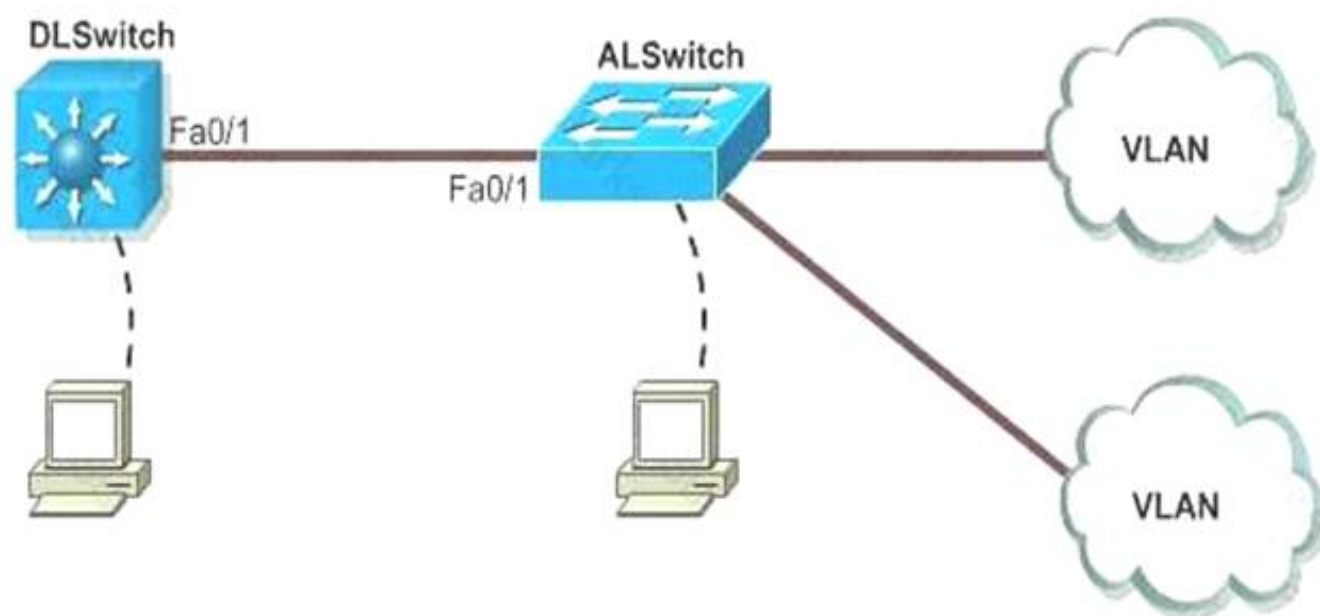
eSIM™ Professional 00:00:01
Scenario 1 Version 1.0

You will have to scroll this window and the problem statement window to view the entire problem.

To configure the switch click on a host icon that is connected to a switch by a serial console cable (shown in the diagram as a curved dashed black line).

The [Tab] key

Hide Topology



VTP Domain name : cisco VLAN Ids 20 31

IP Addresses 172.16.71.1/24 172.16.132.1/24

These are your specific tasks:

1. Configure the VTP information with the distribution layer switch as the VTP server
2. Configure the VTP information with the access layer switch as a VTP client
3. Configure VLANs on the distribution layer switch
4. Configure inter-VLAN routing on the distribution layer switch
5. Specific VLAN port assignments will be made as users are added to the access layer switches in the future.
6. All VLANs and VTP configurations are to be completed in the global configuration

To configure the switch click on the host icon that is connected to the switch by way of a serial console cable.

Answer:

Explanation: vtp server configuration: switch#conf t switch(config)#vtp mode server

switch(config)#vtp domain CISCO switch(config)#vlan 20

switch(config)#vlan 31

switch(config)#int vlan 20

switch(if-config)#ip add 172.64.20.1 255.255.255.0 switch(if-config)#no shut

switch(if-config)#int vlan 31

switch(if-config)#ip add 192.162.31.1 255.255.255.0 switch(if-config)#no shut

switch(if-config)#exit switch#ip routing switch#copy run start vtp client configuration: switch#conf t

switch(config)#vtp mode client switch(config)#vtp domain CISCO switch#copy run start

Alternative #1

VTP DomainDistribution VLAN Ids2031
IP Addresses172.16.16.1/24172.16.193.1/24
Alternative #12
VTP DomainDistribution VLAN Ids3021
IP Addresses172.16.203.1/24172.16.93.1/24

NEW QUESTION 511

Which VTP mode you configure on a VTP domain so that the switch with the highest VTP configuration revision number in the domain propagates VLAN information to the other switches?

- A. client mode
- B. server mode
- C. off mode
- D. transparent mode

Answer: B

NEW QUESTION 516

Which configuration do you apply to a device to place interface GigabitEthernet0/0 into VRRP group 10?

- A. interface GigabitEthernet0/0ip address 172.16.13.2 255.255.255.0standby 10 ip 172.16.13.254 255.255.255.0standby 10 priority 120standby 10 preempt
- B. interface GigabitEthernet0/0description to Executive Offices A 08-38338 ip address 172.16.13.2 255.255.255.0vrrp 10 ip 172.16.13.254 255.255.255.0vrrp 10 active
- C. interface GigabitEthernet0/0description to Executive Offices A 08-38338 ip address 172.16.13.2 255.255.250.0vrrp group 10 ip 172.16.13.254 255.256.255.0vrrp group 10 priority 120
- D. interface GigabitEthernet0/0ip address 172.16.13.2 255.255.255.0vrrp 10 ip 172.16.13.254vrrp 10 priority 120vrrp 10 preempt
- E. interface GigabitEthernet0/0ip address 172.16.13.2 255.255.255.0vrrp 10 ip 172.16.13.254 256.255.255.0vrrp 10 priority 120vrrp 10 preempt
- F. interface GigabitEthernet0/0ip address 172.16.13.2 255.255.255.0standby 10 ip 172.16.13.254

Answer: D

NEW QUESTION 520

Which two statements about source port monitoring in SPAN are true? (Choose two)

- A. Traffic through a destination port can be copied and included in the SPAN session.
- B. It can monitor individual interfaces within a port channel
- C. The entire EtherChannel must be monitored.
- D. It can monitor only FastEthernet and GigabitEthernet port types.
- E. It can monitor ingress and egress traffic

Answer: AE

NEW QUESTION 522

Which command maximizes system resources for ACLs?

- A. sdm prefer default
- B. sdm prefer routing
- C. sdm prefer access
- D. sdm prefer vlan

Answer: C

NEW QUESTION 524

Which two statements about static mac addresses are true ?

- A. They are configured without an aging time
- B. They have a default aging time of 300 seconds
- C. They supersede dynamically learned mac address
- D. They can be configured on multiple interfaces in the same vlan
- E. They have a default aging time of 60 seconds.

Answer: BD

NEW QUESTION 529

Which two settings are part of a default LLDP configuration? (Choose two.)

- A. The LLDP interface state is Disabled.
- B. The LLDP timer is 60 seconds.
- C. The LLDP reinitialized delay is 5 seconds.
- D. The LLDP global state is Disabled.
- E. The LLDP holdtime is 60 seconds.

Answer: AD

NEW QUESTION 532

Which command enables you to detect whether both sides of an aggregate link are configured properly?

- A. spanning-tree etherchannel guard misconfig
- B. spanning-tree backbone fast
- C. spanning-tree loopguard default.
- D. spanning-tree guard root

Answer: A

NEW QUESTION 536

Which statement about the default Switch Database Management template is true?

- A. The default template disables routing and supports the maximum number of unicast MAC addresses
- B. The default template gives balance to all functions.
- C. The default template maximizes system resources for unicast routing
- D. The default template maximizes system resources for access control lists

Answer: B

NEW QUESTION 541

Which statement about SPAN is true?

- A. it uses a specific VLAN to transfer mirrored traffic.
- B. SPAN destinations also can be SPAN sources.
- C. It is an industry standard protocol for mirroring traffic
- D. SPAN destinations participate in spanning tree instances
- E. It mirrors traffic from a source port to a destination port on the same switch only

Answer: D

NEW QUESTION 542

Which two commands display trunking information on one or more Ethernet interfaces? (Choose two)

- A. show interfaces summary
- B. show interface trunk
- C. show interface brief
- D. show interface switchport
- E. show interface

Answer: BD

NEW QUESTION 545

Which command can be used to block a frame with an unknown destination MAC address from being forwarded out of an interface?

- A. Switchport protected
- B. It is not forwarded if the destination MAC address is unknown
- C. switchport port-fast
- D. switchport block unicast

Answer: A

NEW QUESTION 549

Which two authentication types does VRRP support? (Choose two.)

- A. Plain-text
- B. CHAP
- C. PAP
- D. 802.1x
- E. MD5

Answer: AE

NEW QUESTION 554

Which four LACP components are used to determine which hot-standby links become active after an interface failure within an EtherChannel bundle? (Choose four.)

- A. LACP system priority
- B. LACP port priority
- C. interface MAC address
- D. system ID
- E. port number
- F. hot-standby link identification number
- G. interface bandwidth

Answer: ABDE

NEW QUESTION 557

Drag the appropriate from left to right on description.

Uses proprietary cable for connection

Can be connected in up to 9 devices

Can be used even in geographically distributed equipment

Is supported only on line 3750 and ??? (2960,3650,3850 or 3750+)

Is supported only on line 4500 and 6500

Uses 10G interfaces? (The last choice I do not remember)

VSS

STACK

Answer:

Explanation:

VSS

Can be used even in geographically distributed equipment

Is supported only on line 4500 and 6500

Uses 10G interfaces? (The last choice I do not remember)

STACK

Can be connected in up to 9 devices

Is supported only on line 3750 and ??? (2960,3650,3850 or 3750+)

Uses proprietary cable for connection

NEW QUESTION 562

Which feature can prevent ARP POISINING ATTACKS ON ADEVICE?

- A. Dynamic MAC Inspection
- B. MAC snooping
- C. CGMP snooping
- D. DHCP snooping
- E. Dynamic ARP inspection
- F. Static ARP inspection

Answer: D

NEW QUESTION 564

Which two statements about RPVST+ are True ?

- A. It automatically enables uplinkfast and backbonefast.
- B. It elects one root switch per vlan instance
- C. It support two stp instances per vlan
- D. It is incompatible with spanning tree portfast
- E. Backwards compatibility with 802.1d is not supported
- F. It requires approximately 50 seconds to complete reconvergence

Answer: AB

NEW QUESTION 565

Which two statements about configuring VLANs on switches in VTP server mode are true'? (Choose two)

- A. The first VLAN configured on a switch becomes the native VLAN
- B. Devices in a topology without a router can communicate only with other devices on the same VLAN.
- C. Newly configured VLANs remain in the down state until they are manually enabled
- D. VLANs must be configured individually
- E. Switches in the same domain propagate their VLAN configurations over VTP

Answer: CD

NEW QUESTION 569

When Ether Channel guard is enabled and a misconfiguration is detected on a port, how does the port respond"?

- A. It enters the channel-error state
- B. enters the errdisable state
- C. The port remains u
- D. but it is unable to pass traffic
- E. enters the shutdown state
- F. The port state remains unchanged, but the EtherChannel stays down.

Answer: B

NEW QUESTION 573

Which two tasks must you perform to enable AAA operations with a remote security database? (Choose two)

- A. Configure network equipment to query the remote security database.
- B. Configure a user profile in the local database of each device to which the user will have access.
- C. Configure SSH to provide remote access to network equipment.
- D. Configure Cisco Discovery Protocol on all interfaces used for authentication.
- E. Configure user profiles on the remote security database.

Answer: BE

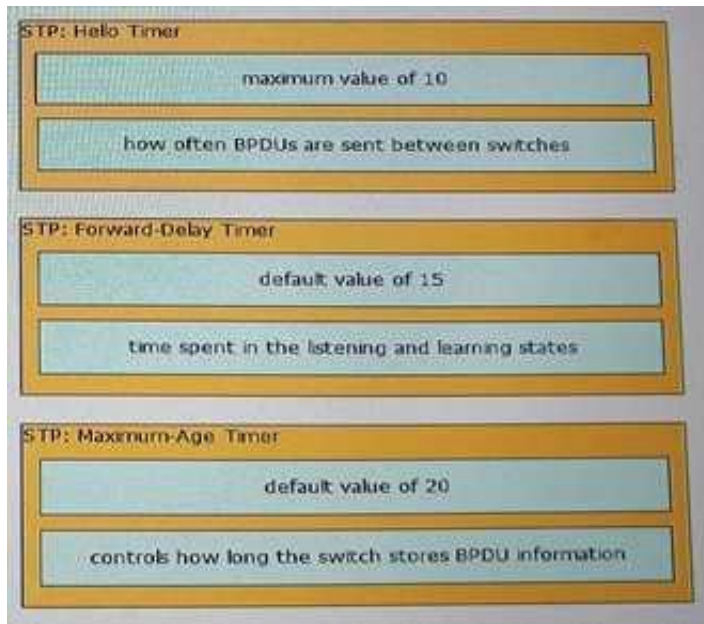
NEW QUESTION 575

Drag and drop the characteristic from the left onto the matching STP timer variables on the right.

time spent in the listening and learning states	STP: Hello Timer
controls how long the switch stores BPDU information	
maximum value of 10	STP: Forward-Delay Timer
default value of 15	
default value of 20	STP: Maximum-Age Timer
how often BPDUs are sent between switches	

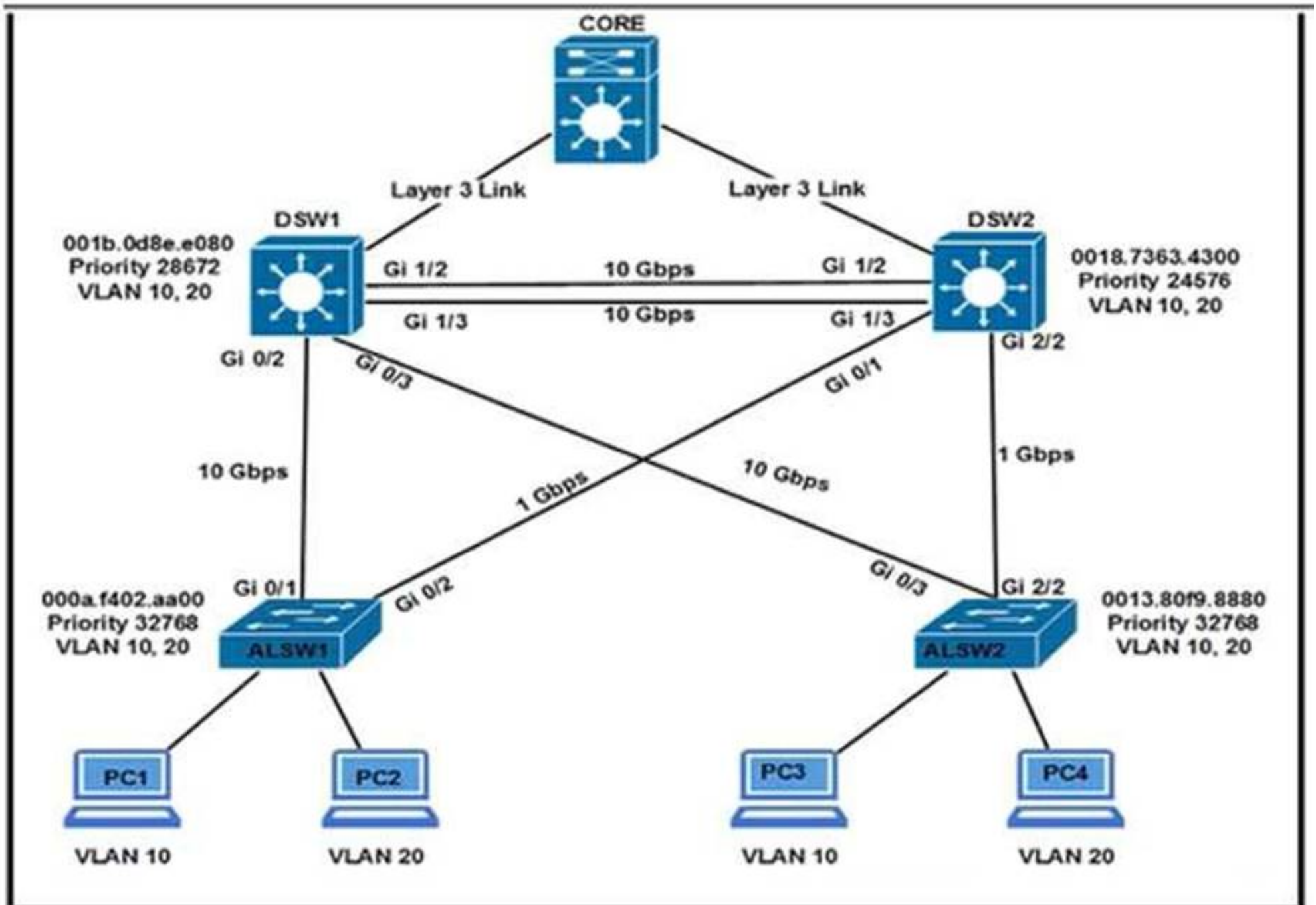
Answer:

Explanation:



NEW QUESTION 577

Refer to the exhibit.



Which two commands ensure that dsw1 becomes root bridge for vlan 10 ?

- A. DSW2(Config)#spanning-tree vlan 10 priority 61440
- B. DSW2(Config)#spanning-tree vlan 10 priority 4066
- C. DSW2(Config)#spanning-tree vlan 20 priority 0
- D. DSW2(Config)#spanning-tree vlan 10 priority root
- E. DSW2(Config)#spanning-tree vlan 10 port-priority 0

Answer: BD

NEW QUESTION 581

Which two statements about extended-range VLANs are true? (Choose two.)

- A. They support pruning
- B. They can be created in VTP server mode in VTP version 3.
- C. VTP versions 1 and 2 store extended range VLANs in the VLAN database
- D. They can be created when the switch is in VTP server mode.
- E. VTP version 3 stores extended range VLANs in the VLAN database

Answer: BE

NEW QUESTION 584

Which two requirements for dot1 q trunking in IOS are true? (Choose two)

- A. ISL must be enabled on the same link
- B. MST must be running if extended VLANs are in use.
- C. The encapsulation protocol must be the same on each end of the trunk.
- D. Spanning-tree PortFast must be enabled.
- E. The native VLAN must have the same number on each side of the link

Answer: CE

NEW QUESTION 587

Which three characteristics of AAA with TACACS+ are true? (Choose three.)

- A. It is a Cisco-proprietary implementation
- B. It runs on UDP port 49.
- C. It runs on TCP port 49
- D. It is a standards-based implementation
- E. It uses a client-server architecture.
- F. It uses a client-private cloud architecture

Answer: ACE

NEW QUESTION 590

Which two statements about configuring EtherChannels are true? (Choose two.)

- A. They can be configured to send Layer 2 packets.
- B. They can be configured to operate with up to 10 links in a single channel.
- C. They can be configured with the no switchport command to place them in Layer 3 mode.
- D. They can be configured to passively negotiate a channel with a connected peer.
- E. They can be configured to load-balance traffic based on Layer 7 information.

Answer: AC

NEW QUESTION 591

Which two differences between RADIUS and TACACS+ are true? (Choose two)

- A. Only TACACS+ can combine authentication and authorization functions
- B. Only RADIUS uses UDP
- C. Only RADIUS provides granular control over the CLI commands that a user can execute
- D. Only TACACS+ uses user privilege levels to determine which commands the user can execute
- E. Only TACACS+ uses UDP

Answer: AB

NEW QUESTION 596

Which AAA authorization type applies security policies on a per-user basis?

- A. network
- B. auth-proxy
- C. EXEC
- D. command

Answer: B

NEW QUESTION 600

Which two statements about RADIUS are true? (Choose two)

- A. it uses UDP packets to communicate.
- B. It supports several less-common protocols in addition to IP
- C. It combines authentication and authorization functions.
- D. It is less secure than TACACS+ because it encrypts only the user name and password.
- E. It combines authentication and accounting functions.

Answer: AC

NEW QUESTION 604

How many active virtual gateways can each GLBP group support?

- A. 1
- B. 2
- C. 4
- D. 16

Answer: C

NEW QUESTION 605

Which feature prevents an interface from sending BPDUs on a portfast enabled port?

- A. root guard
- B. BPDU guard
- C. BPDU filtering
- D. PortFast

Answer: C

NEW QUESTION 609

Which statement about the configuration of MST on an IOS switch is true?

- A. When MST is enable
- B. RSTP is automatically enabled and MST will use BPDU version 4, maximum of 16 instances of MST can exist
- C. When MST is enable
- D. RSTP is automatically disabled and MST will use BPDU version 2. maximum of 16 instances of MST can exist.
- E. When MST is enable
- F. RSTP is automatically enabled and MST will use BPDU version 2, maximum of 16 instances of MST can exist.
- G. When MST is enabled, RSTP is automatically disabled and MST will use BPDU version 4, maximum of 16 instances of MST can exist.

Answer: C

NEW QUESTION 612

Which two statements about HSRP are true? (Choose two.)

- A. You must manually configure ICMP redirect messages on HSRP interfaces.
- B. It is supported on switch virtual interfaces and routed ports.
- C. Primary and secondary HSRP switches forward traffic in a round-robin style.
- D. The interfaces in a HSRP group share a virtual MAC address.
- E. An HSRP group can support a maximum of eight switches.

Answer: BD

NEW QUESTION 616

Which two statements about HSRP timers are true? (Choose two.)

- A. the default hold timer is 15 seconds
- B. the default hello timer is 3 seconds.
- C. the default hello timer is 5 seconds.
- D. the default hold timer is 10 seconds.
- E. the default hello timer is 30 seconds.
- F. the default hold timer is 30 seconds.

Answer: BD

NEW QUESTION 617

Which two statements about manually-configured LACP EtherChannels are true? (Choose two)

- A. LACP negotiation must be disabled on both devices in the EtherChannel
- B. They require Cisco Discovery Protocol
- C. Each Physical port in the EtherChannel must have the same speed and duplex settings.
- D. LACP negotiation must be disabled on one device in the EtherChannel
- E. They use an MD5 hash for equal load balancing.
- F. If the physical port configurations on the two devices are different, the ports are placed into the errdisabled state

Answer: AC

NEW QUESTION 618

.....

Thank You for Trying Our Product

We offer two products:

1st - We have Practice Tests Software with Actual Exam Questions

2nd - Questons and Answers in PDF Format

300-115 Practice Exam Features:

- * 300-115 Questions and Answers Updated Frequently
- * 300-115 Practice Questions Verified by Expert Senior Certified Staff
- * 300-115 Most Realistic Questions that Guarantee you a Pass on Your FirstTry
- * 300-115 Practice Test Questions in Multiple Choice Formats and Updatesfor 1 Year

100% Actual & Verified — Instant Download, Please Click
[Order The 300-115 Practice Test Here](#)