

101-01 Dumps

Riverbed Certified Solutions Associate

<https://www.certleader.com/101-01-dumps.html>



NEW QUESTION 1

When optimizing SSL, trust is established between which hosts? (Select three.)

- A. Client side SteelHead and server-side SteelHead
- B. Client side SteelHead and server
- C. Server-side SteelHead and server
- D. Client PC and server-side SteelHead

Answer: ABC

Explanation: References:

<https://support.riverbed.com/bin/support/static/lrj6rq1evg0fnm7pekuq3j2md1/html/vte4p5uj2dkg9k1ukjv82835>

NEW QUESTION 2

A SteelHead appliance can be configured to send email to alert administrators of alarms and other events. Where is this done in the web interface?

- A. Administration > Announcements
- B. Administration > Email
- C. Administration > Alarms
- D. Administration > Logging

Answer: C

Explanation: References:

<https://support.riverbed.com/bin/support/static/oc1r4qa2pks6172bsj6fte42p4/html/dhatalm0otkq7neeb7h9e9dl8j>

NEW QUESTION 3

A SteelHead is joined to a Windows Active Directory domain using the administrator password. In order to optimize SMB2 traffic, which of the following is true?

- A. SMB2 optimizations must be enabled on the server-side SteelHead only.
- B. A delegation or replication account must be configured on both the client-side and server-side SteelHead.
- C. SMB2 optimizations must be enabled on both the client-side and server side SteelHeads.
- D. A delegation or replication account must be configured on client-side Steel Head

Answer: B

Explanation: 1.6 Configure the Steelhead appliance to optimize Signed SMB and Encrypted MAPI

1.6.1 - Configuration steps for Signed SMB, Signed SMB2 and Signed SMB3

1.6.1.3 On the server-side Steelhead appliance, navigate to Configure > Optimization > SMB2.

1.6.1.4 Under the SMB Signing, check the 'Enable SMB Signing' checkbox.

1.6.1.5 Next select the 'Delegation Mode' radio button.

1.6.1.6 Click the 'Apply' button.

1.6.1.7 No changes are needed on the client-side Steelhead appliance(s) unless SMB3 optimization is required. References:

Optimization in a Secure Windows Environment, White Paper , page 16

https://support.riverbed.com/download.htm?filename=public/doc/technotes/Windows_security_guide.pdf

NEW QUESTION 4

A SteelHead in the datacenter is a server side out-of-path mode. What will the source IP address of the client be, as seen by the server?

- A. The client's real IP address
- B. The client's SteelHead in-path IP address
- C. The server-side SteelHead Primary IP address
- D. The server-side SteelHead in-path IP address

Answer: C

Explanation: References:

<https://support.riverbed.com/bin/support/static/a1rkfcik73lqpk3ii1qs6rgsjj/html/b4molvjchlgg2lknt0so321tgs/sh>

NEW QUESTION 5

CloudPortal.riverbed.com performs which of the following functions in s SteelHead SaaS deployment? (Choose two.)

- A. Cloud portal is a resource that registers SteelHeads, allowing them to use SteelHead SaaS.
- B. Cloud portal is a resource where the SaaS certificates are managed.
- C. Cloud portal is troubleshooting resource to which all SteelHeads report data.
- D. Cloud Portal collects data reduction and netflow statistics for SaaS applications.
- E. Cloud Portal collects data reduction statistics for SaaS applications.

Answer: AC

NEW QUESTION 6

What feature is not available for optimized connections when using Port or Full transparency over the WAN?

- A. Top Talkers report
- B. Quality of Service marking
- C. VLAN segregation
- D. Path Selection
- E. Connection Pooling

Answer: E

Explanation: Correct addressing, the opposite of transparent Addressing which includes Port or Full transparency, enables you to use the connection pooling optimization feature. Connection pooling works only for connections optimized using correct addressing. Connection pooling enables Steelhead appliances to create several TCP connections between each other before they are needed. When transparent addressing is enabled, Steelhead appliances cannot create the TCP connections in advance because they cannot detect what types of client and server IP addresses and ports are needed.

NEW QUESTION 7

When optimizing protocols such as signed SMB or encrypted MAPI, which of the following is true?

- A. Special configuration is always necessary on the Domain Controller.
- B. The server-side SteelHead must be joined to the domain.
- C. The domain administrator password must be made available to the SteelHead.
- D. The client-side SteelHead must be joined to the domain.

Answer: B

Explanation: The server-side Steelhead appliance must be joined to the Windows Domain in order to Enable SMB Signing or to enable encrypted MAPI.

NEW QUESTION 8

A server side SteelHead deployment is to be out-of-path (SSOOP).

Which of the below are limitations compared to physical or virtual in-path? (Choose two.)

- A. Auto discovery is not supported.
- B. Port or full transparency is not supported.
- C. Only one SteelHead is supported on the server side.
- D. Data store synchronization is not possible.
- E. Only enhanced auto discovery can be used.

Answer: AC

Explanation: A: OOP configuration does not support auto-discovery. You must create a fixed-target rule on the clientside Steelhead.

C: An out-of-path deployment is generally located on the server-side and is often described as a server-side outof-path deployment.

In an out-of-path deployment, only a SteelHead primary interface is required to connect to the network. The SteelHead can be connected anywhere in the LAN. An out-of-path SteelHead deployment does not have a redirecting device. You configure fixed-target in-path rules for the client-side SteelHead. The fixed-target in-path rules point to the primary IP address of the out-of-path SteelHead. The out-of-path SteelHead uses its primary IP address when communicating to the server. The remote SteelHead must be deployed either in a physical or virtual in-path mode.

NEW QUESTION 9

A SteelHead is joined to a Windows domain using the Windows Active Directory administrator password. In order to use transparent authentication to optimize signed SMB2 traffic, which of the following is true?

- A. SMB2 signing optimizations must be enabled on the server -side SteelHead only.
- B. SMB2 signing optimizations must be enabled on both the client-side and server-side SteelHeads.
- C. A delegation or replication account must be configured on client-side SteelHead.
- D. A delegation or replication account must be configured on both the client-side and server-side SteelHeads.

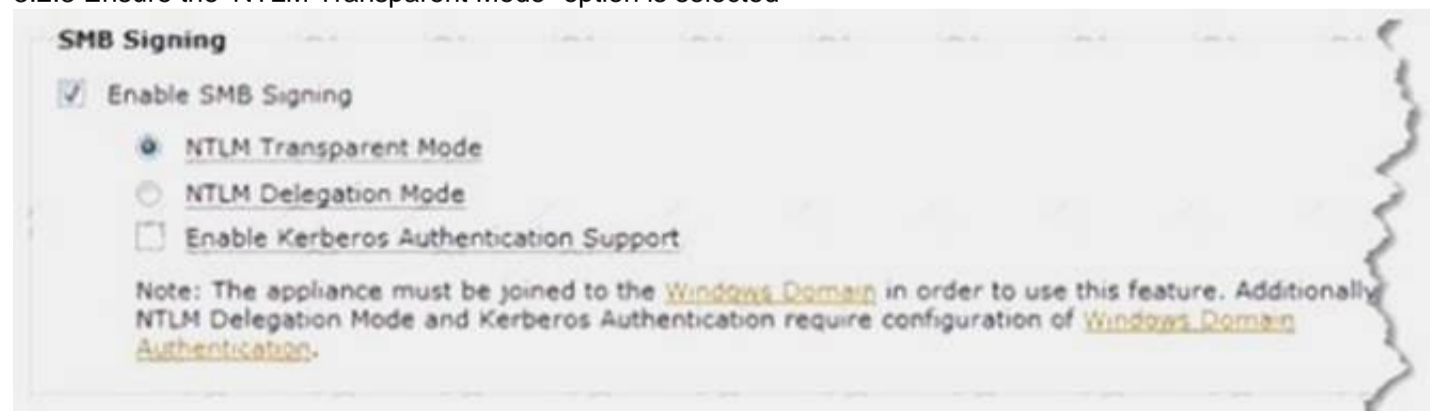
Answer: A

Explanation: Configure the Steelhead appliance to optimize Secure Windows traffic Configuration steps for Signed SMB and Signed SMB2

3.2.1 On the server-side Steelhead navigate to Configure > Optimization > CIFS (SMB1).

3.2.2 Under the SMB Signing section, check the 'Enable SMB Signing' checkbox

3.2.3 Ensure the 'NTLM Transparent Mode' option is selected



References:

Optimization in a Secure Windows Environment, White Paper , pages 35-36

https://support.riverbed.com/download.htm?filename=public/doc/technotes/Windows_security_guide.pdf

NEW QUESTION 10

By default, when a SteelHead fails, either by power loss or optimization service failure, the appliance:

- A. Blocks all traffic.
- B. Routes all traffic.
- C. Passes through all traffic.

Answer: C

NEW QUESTION 10

With a server-side Interceptor deployment, once a TCP handshake has been completed between the server-side SteelHead and the server, how will data packets sent from the server get forwarded to the server-side SteelHead?

- A. Destination NAT is performed on the Interceptor, changing the destination IP address from the client IP to the SteelHead's IP.
- B. The server sees the IP address of the SteelHeads in-path interface as its client, so there is no need for the Interceptor to forward it.
- C. They are GRE-encapsulated by the Interceptor, and forwarded using the SteelHead IP.
- D. The Interceptor tunnels them over the connection using port 7850 to the SteelHeads.
- E. The Interceptor applies the MAC address of the SteelHead's in-path interface and forwards at layer 2.

Answer: A

Explanation: Once the initial handshake is completed, the interceptor use destination NATs packets to the steelhead so you will not see this traffic if you are filtering on the original client and server address.

References: <https://splash.riverbed.com/thread/5512>

NEW QUESTION 14

The auto-discovery probe uses which TCP option number (in decimal)? (Hint: Use the calculator)

- A. 78
- B. 76
- C. 66
- D. Auto-discovery does not use TCP options

Answer: B

NEW QUESTION 15

A service provider would like to implement multi-tenanting on a SteelCentral Controller for SteelHead (SCC) such that the customers would be able to run their own reports. Which of the following are true?

- A. SCC does not support multi-tenanting
- B. A virtual or physical SCC would need to be provisioned for each customer.
- C. The SSL certificate for SCC management would need to be distributed to the customers.
- D. RADIUS or TACACS+ would need to be used to offload the authentication to achieve the privileges required.
- E. HTTP server should be disabled for the web UI and only SSL used.
- F. Each customer would have to be configured with privileges for their own SteelHeads and no others.

Answer: A

Explanation: Controller-v is a virtualized appliance of the SteelCentral Controller for SteelHead specifically designed for customers (such as Managed Service Providers) and users who need to centrally manage multiple, separate deployments of the Riverbed system on behalf of their customers.

References:

SteelCentral Controller for SteelHead (Virtual Edition), Installation Guide, Version 9.0, December 2014, page 5

<https://support.riverbed.com/bin/support/download?did=4923qri51etb3sc1ejqk76bauo>

NEW QUESTION 20

With RiOS v9.0 and later, what does a 'topology' consist of? (Choose three.)

- A. Uplinks
- B. Networks
- C. Services
- D. Applications
- E. Sites

Answer: ABE

Explanation: The topology consists of the network, the sites, and the uplinks to the network for the sites. References:

Riverbed Command-Line Interface, Reference Manual, April 2015 (page 453) <https://support.riverbed.com/bin/support/download?did=okk799647eeafskshi2utcul45>

NEW QUESTION 25

With Path Selection, what happens to traffic destined for a remote site where no uplinks have been configured?

- A. Remote uplink configuration is not needed so path selection will be applied normally.
- B. Traffic to that site will be blackholed as there is no path back to the source site.

- C. The local Steelhead will probe the remote Steelhead for its default gateway.
D. Only the default path can be used as the Steelheads on each site won't be able to agree on a path.

Answer: A

Explanation: Reference <https://support.riverbed.com/bin/support/static/oc1r4qa2pks6172bsj6fte42p4/html/dhatalm0otkq7neeb7h9e9dl8j>

NEW QUESTION 30

During packet analysis of TCP flows from a SteelHead using path selection, you consistently notice that the first few packets go over one path, and subsequent packets go via another. What is the cause of this?

- A. The SteelHead attempted to optimize the traffic and failed.
B. When the connections proceeded in passthrough they get treated differently than if they had been optimized.
C. The SteelHead has detected that a path has gone down and therefore re-routed the traffic.
D. QoS traffic classification has matched a configured application and moved the traffic into a different QoS class.
E. This is normal operation of using the Application Flow Engine with path selection, as the SteelHead needs to examine several packets before it can identify the traffic.

Answer: C

Explanation: References:

SteelHead Deployment Guide Including the SteelCentral Controller for SteelHead Mobile, May 2016, page 174

<https://support.riverbed.com/bin/support/download?did=7cmsbro2vbhvm7mn70uefgprbv>

NEW QUESTION 33

Which SteelHead domain authentication features can be used to optimize signed SMB traffic or encrypted MAPI traffic? (Choose two.)?

- A. Transient mode
B. Domestic mode
C. Transparent mode
D. Delegation mode

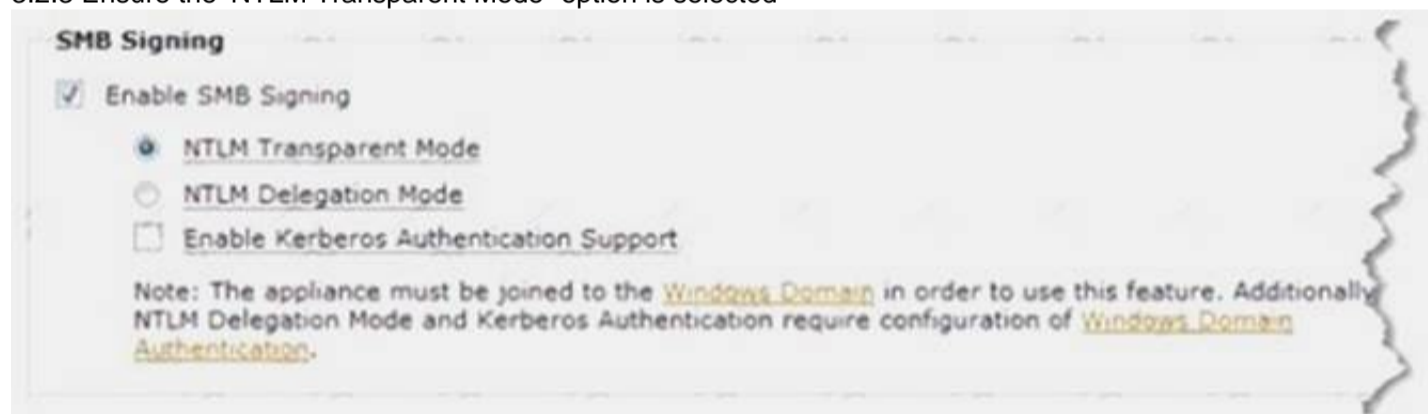
Answer: CD

Explanation: Configure the Steelhead appliance to optimize Secure Windows traffic Configuration steps for Signed SMB and Signed SMB2

3.2.1 On the server-side Steelhead navigate to Configure > Optimization > CIFS (SMB1).

3.2.2 Under the SMB Signing section, check the 'Enable SMB Signing' checkbox

3.2.3 Ensure the 'NTLM Transparent Mode' option is selected



Note: NTLM Delegation can also be used. Similar Configuration steps for Encrypted MAPI. References:

Optimize Windows Environment, White Paper, pages 35-36

https://support.riverbed.com/download.htm?filename=public/doc/technotes/Windows_security_guide.pdf

NEW QUESTION 35

True or False? SteelHead SaaS can provide Netflow and SteelFlow to other Riverbed products to monitor and troubleshoot SaaS performance issues.

- A. True
B. False

Answer: A

Explanation: References:

<http://www.riverbednews.com/2015/07/detect-fix-and-relax-with-steelhead-and-steelcentral/>

NEW QUESTION 39

What is the command to return a Steelhead appliance back to factory defaults?

- A. (config) # restart factory reload
B. (config) # reload factory
C. (config) # restart clean
D. (config) # reload clean empty
E. (config) # reset factory reload

Answer: E

NEW QUESTION 40

All of the following are types of peering rules, except:

- A. Pass
- B. Accept
- C. Discard
- D. Auto

Answer: C

NEW QUESTION 43

What basic configuration steps should be done on the SteelHead before attempting to join it to a Windows Domain? (Choose two.)

- A. Configure either a Delegation or Replication user.
- B. Configure DNS to include an entry for resolution of the SteelHead primary interface IP address.
- C. Enable SMB signing/Encrypted MAPI support.
- D. Enable NTP and ensure time is synced with domain controllers.

Answer: BD

Explanation: When joining a Steelhead appliance to the Windows Domain, several prerequisites need to be configured to ensure smooth integration. The server-side Steelhead appliance must be able to successfully lookup its hostname in the DNS architecture.

Ensure proper DNS entries are created in the DNS server(s) (only an "A record" is required) and the proper DNS servers are configured in the Steelhead appliance.

The date and time of the server-side Steelhead appliance must be synchronized with the Windows Domain Controller. This is best accomplished by configuring the Steelhead to use the same NTP server as all the other servers in the domain. You must know the fully-qualified domain name.

References:

Riverbed White Paper, Optimization in a Secure Windows Environment, page 14 <https://splash.riverbed.com/docs/DOC-4661>

NEW QUESTION 48

What files can be gathered from the SteelHead which would be useful for troubleshooting problems with QoS configuration? (Choose two.)

- A. TCP Dump
- B. System Dump
- C. Core Dump
- D. Process Dump

Answer: AB

Explanation: TCP Dump can be used to analyze QoS protocol traffic.

The System Dump Analyzer helps you investigate system dumps to identify potential problems with your Steelhead appliances and Riverbed configuration. Simply upload a system dump and view the results.

References: <https://support.riverbed.com/content/support/help.html>

NEW QUESTION 52

Connection forwarding without multi-interface support uses which interface for communication?

- A. Wan0_0
- B. Remote
- C. Primary or Aux
- D. Lan0_0
- E. Inpath0_0

Answer: E

Explanation: References:

<https://support.riverbed.com/bin/support/static/oc1r4qa2pks6172bsj6fte42p4/html/dhatalm0otkq7neeb7h9e9dl8j>

NEW QUESTION 53

Data store synchronization takes place over which interface or interfaces?

- A. Primary or Aux
- B. Wan0_0
- C. Remote
- D. Inpath0_0
- E. Lan0_0

Answer: A

Explanation: The traffic for RiOS data store synchronization is transferred through either the Steelhead appliance primary or auxiliary network interfaces, not the in-path interfaces.

References:

Steelhead Appliance Deployment Guide Including the Steelhead Mobile Controller, December 2013, page 15

<https://support.riverbed.com/bin/support/download?did=a53lcljdv9s5oc0agjp851iol>

NEW QUESTION 57

The SteelHead Admission Control feature activates when: (choose two)

- A. The data store has reached full capacity
- B. Throughput exceeds the licensed limit of the appliance
- C. Total connections exceeds the licensed limit of the appliance
- D. Optimization service memory exceeds the limit of the appliance
- E. Optimized connections exceed the licensed limit of the appliance

Answer: BE

Explanation: Note: Admission Control is a validation process in communication systems where a check is performed before a connection is established to see if current resources are sufficient for the proposed connection.

References:

http://h20564.www2.hp.com/hpsc/doc/public/display?docId=mmr_kc-0125647

NEW QUESTION 59

In the CLI, how would you clear the data store on a SteelHead?

- A. Datastore clean
- B. Restart clean
- C. Reboot clean
- D. Datastore wipe clean

Answer: B

Explanation: References:

<https://support.riverbed.com/bin/support/static/5dmuo8qo6ci1inmbo174n3234j/html/iiteb5endqjlbm8a7d9l6pim>

NEW QUESTION 60

Which statement is true regarding licensing of SteelHead SaaS?

- A. Licensing is based on the number of SaaS applications to optimize.
- B. Licensing is based on the number of SteelHead appliances to be enabled.
- C. Licensing is based on the number of users requiring SaaS optimization.
- D. Licensing of SaaS optimization is included in the support contract.

Answer: C

Explanation: With flexible SaaS licensing, all supported SaaS applications can be optimized with a single license, and new applications added with a click of a button. Subscriptions are based on the number of users supported, with no restriction as to which SaaS apps are optimized.

References:

<http://www.riverbed.com/se/solutions/solutions-by-technology/saas-and-cloud-performance.html>

NEW QUESTION 63

The CIFS latency optimization feature provides which performance benefits? (Choose two.)

- A. Read-ahead and write-behind optimizations
- B. Data reduction over the WAN
- C. Latency reduction through transaction prediction
- D. Data encryption over the WAN

Answer: BC

Explanation: CIFS optimization focuses on reducing the impact of WAN round-trip latency of common application and system behavior.

RTOS can perform full latency and bandwidth optimization securely for SMB signed traffic. References:

<https://support.riverbed.com/bin/support/static/lrj6rq1evg0fnm7pekuq3j2md1/html/vte4p5uj2dkg9k1ukjv82835>

NEW QUESTION 64

What is the definition of an 'endpoint' in a SteelHead Mobile deployment?

- A. A network interface on a SteelHead Mobile client computer
- B. The data store on a SteelHead Mobile client computer
- C. A SteelHead client computer
- D. SteelCentral Controller for SteelHead Mobile

Answer: C

Explanation: References:

<https://support.riverbed.com/bin/support/static/j8etrivdlj3thqu6l24c7j4ilv/html/frdn4thkhr2cklif5ihcdjoqpn/shm>

NEW QUESTION 66

Which authentication methods are available to secure the SteelHead appliance? (Choose three.)

- A. Kerberos
- B. RADIUS
- C. Local password database
- D. TACASS+
- E. NTLM

Answer: BCD

Explanation: You can log in to a SteelHead with a RADIUS or TACACS+ authentication system for administrative and monitoring purposes. The following methods for user authentication are provided with the SteelHead:

References: <https://support.riverbed.com/bin/support/static/fbunsuuo632vi3jrpe0evbko9/html/u2pi6l52l4drmhq3uhck9tu7h>

NEW QUESTION 71

What is the role of the SteelCentral Controller for SteelHead Mobile?

- A. It is an optimization peer and the SteelCentral Controller for SteelHead manages the clients.
- B. It manages the SteelHead Mobile clients only.
- C. It manages and is an optimization peer for the SteelHead Mobile clients.
- D. It is an optimization peer for the SteelHead Mobile clients only.

Answer: C

Explanation: SteelHead Mobile is a great way to give application acceleration and optimization to mobile laptops and remote desktops. And to manage all those far-flung SteelHead Mobile deployments, turn to SteelCentral Controller for SteelHead Mobile. It's got everything you need to manage your deployment.

References:

<http://www.riverbed.com/se/products/steelhead/steelhead-steelcentral-controller-for-steelhead-mobile.html>

NEW QUESTION 76

What happens to path selection if the optimization service is stopped on the local SteelHead?

- A. Path selection will continue to work as it does not rely on the optimization service.
- B. Path selection will no longer apply and the traffic will follow its default route.
- C. Path selection will continue to work but with default rules.
- D. Path selection will continue to work as normal, but QoS will no longer be active.

Answer: A

Explanation: References:

https://www.riverbed.com/document/fpo/RVRBD_FeatureBrief_RiOs_PathSelection_v3.pdf

NEW QUESTION 78

On the SteelCentral Controller for SteelHead Mobile, which report would you use to examine data reduction over time?

- A. Desktop Bandwidth
- B. Endpoint Report
- C. Endpoint History
- D. Desktop Traffic

Answer: A

Explanation: The Desktop Bandwidth report answers the following questions:

NEW QUESTION 79

What is the CLI command for starting the Configuration Wizard?

- A. # configuration wizard start
- B. (config) # configuration jump-start
- C. # configuration start
- D. (config) # wizard start
- E. restart clean

Answer: B

NEW QUESTION 81

Which policy types make up the configuration for a SteelHead Mobile client?

- A. Acceleration policy
- B. Endpoint policy
- C. Security policy

D. A single policy for all the above

Answer: B

Explanation: Configuring Endpoint Settings for Policies

You configure endpoint settings for SteelHead Mobile clients on the Endpoint Settings tab of the Manage > Policies page.

Note: A policy is a set of optimization, security, location awareness, storage, and other configuration settings that determine the optimization rules for the SteelHead Mobile clients. SteelHead Mobile clients must have a policy and other endpoint-specific settings for optimization.

References:

SteelCentral Controller for SteelHead, Mobile User's Guide, Version 4.8, April 2016, page 143

<https://support.riverbed.com/bin/support/download?did=ponkltr1vg9mv23ok2fmtgkj4>

NEW QUESTION 84

Which report would you use to monitor disk utilization in the SteelHead management console user interface?

- A. Reports > Data Store Cost
- B. Reports > Data Store Disk Load
- C. Reports > Data Store Hit Rate
- D. Reports > Data Store Status

Answer: B

Explanation: The Data Store Disk Load report summarizes the data store disk load due to SDR-only as related to the benchmarked capacity of the data store.

Consider any value under 100 as healthy. Any value higher than 100 might indicate disk pressure. When a value is consistently higher than 100, contact Riverbed Professional Services for guidance on reconfiguring the data store to alleviate disk pressure.

The Data Store Disk Load report answers the following questions:

NEW QUESTION 87

How does the SteelHead monitor path availability in Path Selection?

- A. Path availability is not monitored until traffic is sent over that pat
- B. Then the SteelHead uses standard TCP timeouts to monitor path integrity.
- C. The SteelHead uses ICMP ping to monitor path availability.
- D. The SteelHead creates an inner channel on each path and keep-alive packets are used to track availability.
- E. UDP keep-alives are periodically sent across each pat
- F. If a SteelHead does not receive two of these within a pre-defined timeout period, the path is declared down.

Answer: B

Explanation: RiOS 8.5 path selection technology provides the ability to deterministically re-direct select traffic and application flows through alternate WAN routes based on service metrics, such as path availability and priority.

Availability is determined by whether the host at the remote end of a path can be reached via end-to-end Internet Control Messaging Protocol (ICMP):

References:

<http://www.riverbednews.com/2013/08/path-selection-what-you-need-to-get-started/>

NEW QUESTION 89

Which Riverbed products can be managed by the SteelCentral Controller for SteelHead? (Choose six.)

- A. SteelFusion Core
- B. SteelHead
- C. SteelCentral AppResponse
- D. SteelFusion Edge
- E. SteelHead EX
- F. SteelCentral NetProfiler
- G. SteelCentral Controller for Mobile
- H. SteelHead Interceptor

Answer: ABDEGH

Explanation: The SteelCentral Controller (SCC) supports monitoring only for SteelFusion Core 4.0 and later. SCC 9.2 supports configuration and monitoring for SteelHead CX 8.6 and later.

SCC supports monitoring and partial configuration for SteelFusion Edge 4.0 and later. SCC 9.2 supports configuration and monitoring for SteelHead EX 3.0 and later.

SCC 9.2 supports monitoring only for SteelHead Mobile 4.0 and later.

SCC 9.2 supports configuration and monitoring for SteelHead Interceptor 3.x and later. References:

SteelCentral Controller for SteelHead User's Guide, Version 9.2, May 2016, page 19

<https://support.riverbed.com/bin/support/download?did=oksf8h0os0pck6pv42smvag77t&version=9.2.1>

NEW QUESTION 94

You have recently upgraded from a CX 555 to a CX 1555 for additional capacity. How would you migrate the data store from the old to the new model?

- A. Configure data store synchronization between the two appliances.
- B. Move the disks into the new appliance and power on.
- C. Use the SteelCentral Controller for SteelHead External Backup feature to backup the store to an external server and then restore it to the new appliance.
- D. It is not possible to synchronize two differently sized data stores.

Answer: C

Explanation: External SCC Backups and High Availability

The SCC stores SteelHead backups. The SCC can back up its own configuration (which includes the configurations of the SteelHeads) to an external file server (NFS, SSH, or CIFS).

NEW QUESTION 97

Packet mode optimization supports which types of in-path rules?

- A. Full Transparency Fixed-target
- B. Correct Addressing Auto Discovery
- C. Full Transparency Auto Discovery
- D. Correct Addressing Fixed-target

Answer: D

Explanation: References:

<https://support.riverbed.com/bin/support/static/fbunsuu0632vi3jrspe0evbko9/html/u2pi6l52l4drmhq3uhck9tu7h>

NEW QUESTION 98

In order to achieve SteelHead SaaS optimization two things must happen. First acquire and install a subscription license to enable the feature, and then SteelHead SaaS must be configured.

Which statement correctly describes the configuration step?

- A. Every SteelHead is configured with a registration key included in a RiOS upgrade.
- B. All the configuration is done from the Riverbed Cloud Portal.
- C. Every SteelHead is configured with a new license in the standard form LK1-SHSaaS-XXX.
- D. Every SteelHead is configured with the same registration key copied from the Riverbed Cloud Portal.

Answer: B

Explanation: You can use the Riverbed Cloud Portal to register or de-register SteelHead SaaS appliances, obtain the service status, manage SSL certificates, manage licenses, and enable optimization for available SaaS applications.

Go to the Riverbed Cloud Portal > SaaS Platforms page and enable Acceleration Service for the SaaS application you want to optimized.

NEW QUESTION 102

Manually moving an entry from the SSL grey list to the white list on a SteelHead enables trust between which hosts?

- A. Client-side SteelHead and server-side SteelHead
- B. Client PC and server-side SteelHead
- C. Client-side SteelHead and server
- D. Server-side SteelHead and server

Answer: A

Explanation: The Riverbed SSL solution optimizes data transfers that are encrypted using SSL, provided that SteelHeads are deployed locally to both the client-side and server-side of the network.

Note: Secure Peering Using the Self-Signed Peer White, Gray, and Black Lists

You can use peering lists to configure peer certificates on SteelHeads running RiOS 5.0 or later. When SSL optimization is enabled, and an optimizable SSL connection is attempted across the SteelHeads, the remote peer is detected and its peering certificate is automatically populated into the self-signed peer gray list. The connection remains unoptimized because the remote peer is listed in the self-signed peer gray list.

You can examine the peer certificate for authenticity and move any peer from the gray list to either the white list or the black list. If you trust the remote peer, move it into the self-signed peer white list to begin optimizing the SSL connection. If you do not trust the remote peer, move it into the self-signed peer black list to prevent the SSL connection from being optimized.

References: <https://support.riverbed.com/bin/support/static/lrj6rq1evg0fnm7pekuq3j2md1/html/vte4p5uj2dkg9k1ukjv82835>

NEW QUESTION 103

Simplified Routing is recommended when:

- A. The SteelHead is in a different subnet from the client and servers.
- B. The SteelHead is in the same subnet as the clients and servers.
- C. The SteelHead is in the same subnet as the servers or clients.

Answer: A

Explanation: Enabling simplified routing eliminates the need to add static routes when the steelhead appliance is in a different subnet from the client and the server.

Note: Simplified routing changes the process used to select the destination Ethernet address for packets transmitted from in-path interfaces. Simplified routing collects the IP address for the next hop MAC address from each packet it receives to address traffic. With simplified routing, can use either the WAN or LAN-side device as a default gateway. The steelhead appliance learns the right gateway to use by watching where the switch or router sends the traffic, and by associating the next-hop Ethernet addresses with IP addresses.

References:

http://h20564.www2.hp.com/hpsc/doc/public/display?docId=mmr_kc-0127411

NEW QUESTION 105

What is the function of Enhances Auto-Discovery?

- A. It enables optimization to services behind SteelHead Mobile clients.
- B. It sends additional TCP options to detect the last SteelHead in a chain.
- C. It maintains client and server IP addresses during discovery.
- D. It sets up additional connection pool connections to improve auto discovery speed.

Answer: B

Explanation: References:

<https://support.riverbed.com/bin/support/static/oc1r4qa2pks6172bsj6fte42p4/html/dhatalm0otkq7neeb7h9e9dl8j>

NEW QUESTION 108

When the SteelHead SaaS optimization service is correctly configured, how does the SteelHead identify the SaaS traffic that needs to be optimized?

- A. The SteelHead recognized the URL of the SaaS traffic using the DPI engine.
- B. The SteelHead must be configured with appropriate in-path rules on the cloud SteelHead.
- C. The SteelHead must be configured with appropriate in-path rules on the data center side.
- D. As part of the configuration, the SteelHead downloads a list of IP addresses that correspond to SaaS servers.
- E. The SteelHead must be configured with appropriate in-path rules on the client side.

Answer: E

Explanation: You can configure what traffic a Steelhead appliance optimizes and what other actions it performs, using the following:

In-path rules are used only when a connection is initiated. Because connections are typically initiated by clients, in-path rules are configured for the initiating, or client-side, Steelhead appliance.

References:

Steelhead Appliance Deployment Guide, Including the Steelhead Mobile Controller, December 2013 , page 26

<https://support.riverbed.com/bin/support/download?did=a53locldv9s5oc0agjp851iol>

NEW QUESTION 113

Automatic registration of devices with the SteelCentral Controller for SteelHead (SCC) requires which one of the following?

- A. RiOS 8.0 for SteelHead and 4.0 for Interceptor
- B. The SCC must have joined the Windows domain
- C. Pre-trusted SSL certificates on the devices and SCC
- D. The serial number of the managed device to be preconfigured in the SCC
- E. The name “riverbedcmc” to be an entry in DNS resolving to the SCC primary IP address

Answer: E

Explanation: To use automatic registration, prepare the appliance for registration with the SCC by entering the IP address or DNS-registered hostname of the SCC when you run the configuration wizard on the appliance. Riverbed recommends that you set up your DNS servers to resolve riverbedcmc to the primary interface IP address of your SCC. If you configure your DHCP servers to forward the correct DNS settings, any appliance added into the network and powered on should automatically register with the SCC.

Alternatively, you can use the cmc enable and cmc hostname commands. If you do not change the default hostname, it remains riverbedcmc.

References:

SteelCentral Controller for SteelHead Deployment Guide, May 2016, page 14

<https://support.riverbed.com/bin/support/download?did=mcmq1o68fbs27lqc5798c4p8m6>

NEW QUESTION 114

The SteelHead can optimize which transport protocols? (Choose two.)

- A. UDP
- B. GRE
- C. IPSec
- D. TCP

Answer: AD

Explanation: With the Riverbed Data Streamlining technology, which applies to all TCP Traffic, including SSL, and to all WAN Traffic(TCP and UDP), redundant bytes are eliminated from transfers. WAN bandwidth utilization is reduced by 60-95 percent.

References:

<http://www.wansolutionworks.com/RiOS.asp>

NEW QUESTION 118

A user uploads a Word document to a Sharepoint server via HTTP, optimized by two SteelHeads. Another user at the same location as the first downloads the same Word document via CIFS.

What speed should the second user expect?

- A. Fast as the data patterns are recognized by SDR regardless of direction or which unencrypted application protocol is used
- B. Slow as the data is being transported via a different protocol and the SteelHead needs to learn the new patterns
- C. Fast as the SteelHead now has a local copy of the file in the web proxy cache

D. Slow as the data is travelling in a different direction and the SteelHead needs to learn the new patterns

Answer: C

Explanation: RiOS has provided CIFS optimization since version 1.0, with ongoing enhancements in each subsequent version. CIFS optimization focuses on reducing the impact of WAN round-trip latency of common application and system behavior, including the Microsoft Office product suite, general file access, and remote printing.

References: <https://support.riverbed.com/bin/support/static/lrj6rq1evg0fnm7pekuq3j2md1/html/vte4p5uj2dkg9k1ukjv82835>

NEW QUESTION 123

What is the command to clear all statistics on a Steelhead appliance?

- A. (config) # stats clear-all
- B. (config) # clear-all stats
- C. (config) # reset stats
- D. (config) # reload stats clean
- E. (config) # clear stats

Answer: A

NEW QUESTION 124

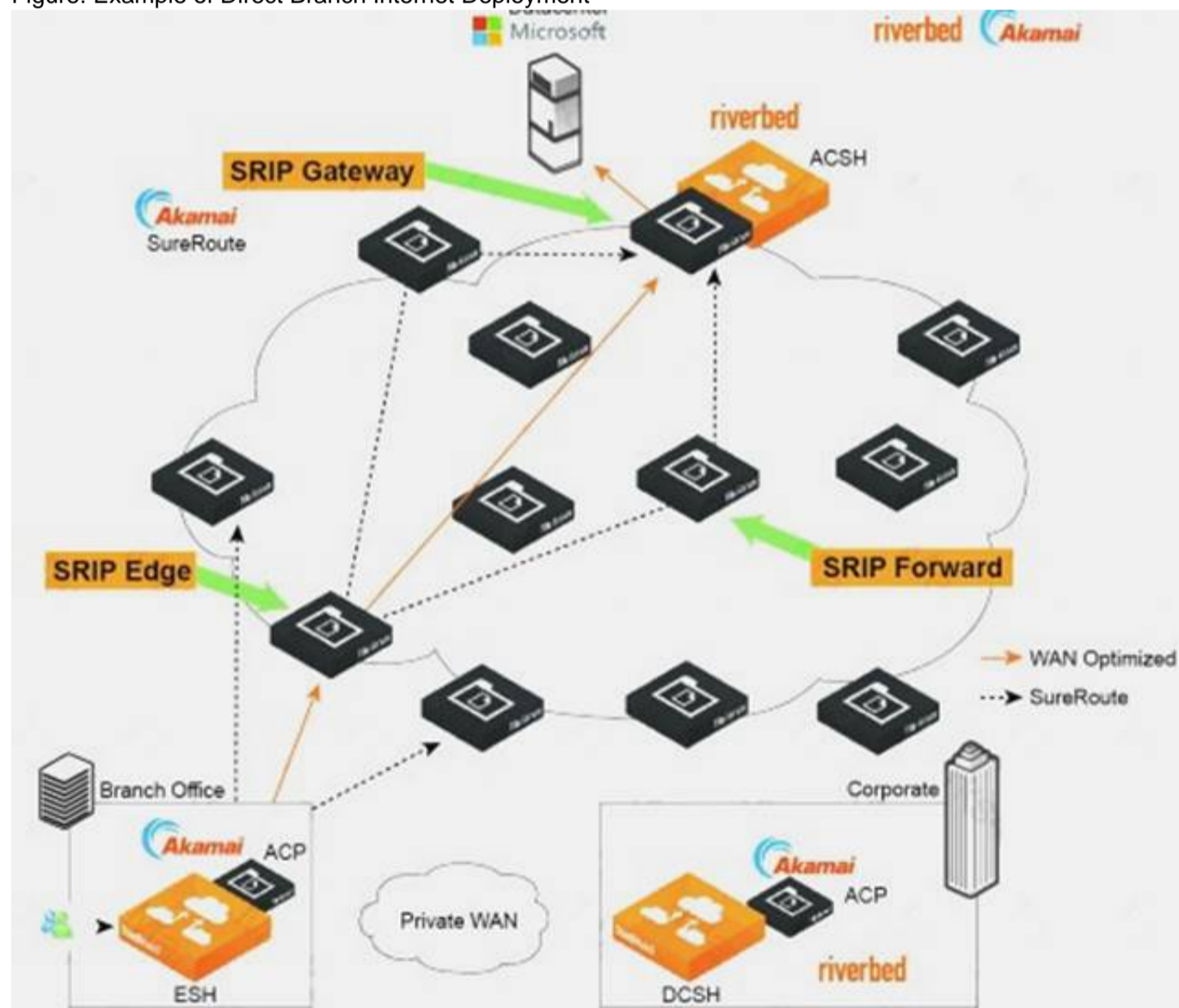
Which of the following correctly describe the two topology deployment modes of SteelHead SaaS? (Select two.)

- A. In direct mode, the cloud optimized traffic is encapsulated at the branch-side SteelHead appliance.
- B. Direct mode cannot be used if the internet traffic exit points is centralized at the customer data center and not available from the branch.
- C. In backhaul mode the cloud-optimized traffic is encapsulated at the data center but the SSL optimization starts at the branch.
- D. Backhaul mode allows to optimize traffic to the cloud from the data center without the need of a branch SteelHead.

Answer: AC

Explanation: A: In direct mode, the ESH appliance encapsulates the traffic and sends it directly to a server in the Akamai (Branch Office xample) network. Akamai SureRoute optimization technology ensures that the traffic is forwarded through the Akamai network along the fastest path toward its destination at the data center hosting the SaaS application.

Figure: Example of Direct Branch Internet Deployment

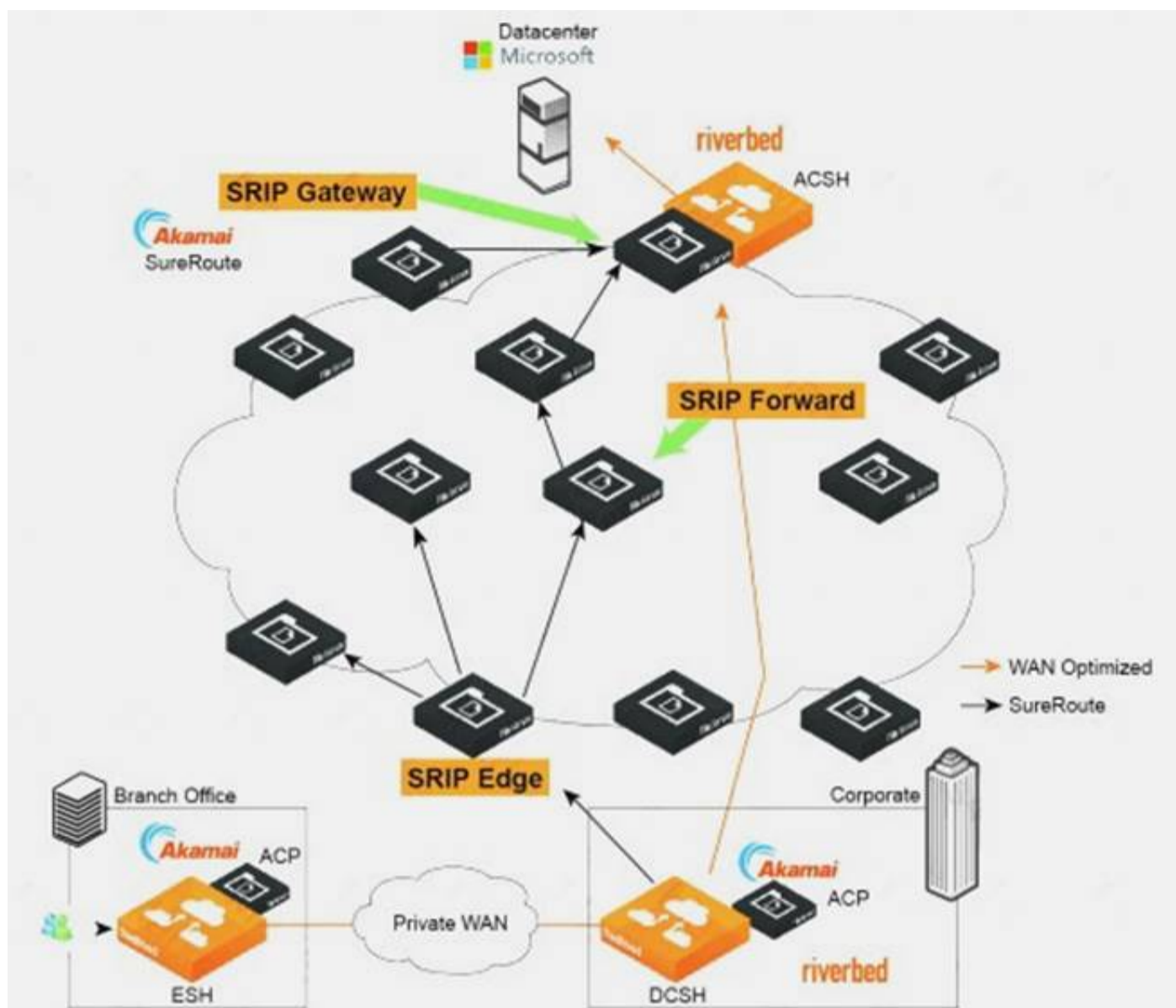


C: Back-hauled Internet Deployment

In this topology, the branch does not have its own connection to the Internet. All traffic directed to the Internet is back-hauled over a private WAN or VPN to the organization's data center.

Although the DCSH encapsulates the traffic, it plays no role in the SSL optimization process. SSL optimization still takes place between the ESH appliance and the ACP. Ensure that you establish the SSL peering trust between them.

Figure: Example of Back-hauled Internet Deployment



References:

SteelHeadSaaS User's Guide, RiOS Version 9.1, July 2015, pages 8-9

NEW QUESTION 129

What is the smallest and largest datastore size one can allocate for a Steelhead Mobile client?

- A. 256 MB and 20 GB on disk
- B. 1 GB and 100 TB on disk
- C. 256 MB and 1 TB in memory
- D. 64 KB and 512 KB in memory
- E. 10% and 50% of the available disk space

Answer: A

NEW QUESTION 132

To run RSP on a Steelhead, you need to have an RSP license and a minimum of how much memory added to the unit?

- A. 1 GB
B. 2 GB
C. 3 GB
D. 4 GB

Answer: B

NEW QUESTION 135

If an administrator wanted to compare the performance of Microsoft file sharing across the WAN for two clients with and without Riverbed optimization, what strategy could you use to enable this testing?

- A. In-path rule on client-side Steelhead appliance to pass through port 139 and 445 for the source IP of one of the test clients
B. Disable optimization on the Steelhead appliance
C. In-path rule on server-side Steelhead appliance to pass through port 139 and 445 for the source IP one of the test clients
D. A and C

Answer: A

NEW QUESTION 138

When configuring the Steelhead Mobile client package, the amount of disk space allocated to the datastore for a Steelhead Mobile client is configured in what part of the configuration?

- A. Endpoint policy
- B. Authentication policy
- C. Acceleration policy
- D. Peering policy

Answer: A

NEW QUESTION 139

When examining SMB connections which are SteelHead optimized, you notice that for each IP client and server pair, there are often two connections created – one on destination port 139 and one on destination port 445. What is the reason for this?

- A. This is because SMB2 and CIFS optimization are both enabled on the SteelHeads.
- B. The server must be ignoring or resetting connections on port 139, so the client tries again on port 445.
- C. The server must be ignoring or resetting connections on port 445, so the client again on port 139.
- D. Clients often try to connect on port 139 and 445 simultaneously for compatibility reason
- E. Once one connection is accepted, the other gets reset.

Answer: D

Explanation: Clients try to connect to 139 and 445 at the same time. Whatever ports gets the first response will be used for communications.
References: <https://support.riverbed.com/bin/support/static/lrj6rq1evg0fnm7pekuq3j2md1/html/vte4p5uj2dkg9k1ukjv82835>

NEW QUESTION 141

Which of the following are configurable attributes of an Interceptor appliance? (Select 3)

- A. Synchronizing datastore
- B. Sharing connection state with a parallel Interceptor appliance
- C. Redirect to a Steelhead appliance cluster
- D. Failover to another Interceptor appliance

Answer: BCD

NEW QUESTION 146

What benefit does the Interceptor appliance provide? (Select 3)

- A. Load balances connections across Steelhead appliances
- B. Provides redundancy in case of Steelhead appliance failure
- C. Maintains stateful connection table if a Steelhead appliance fails
- D. Allows clustering of multiple Steelhead appliances

Answer: ABD

NEW QUESTION 150

What default DNS entry is required for CMC touchless auto-configuration?

- A. riverbedcmc
- B. cmcsteelhead
- C. cmcriverbed
- D. steelheadcmc

Answer: A

NEW QUESTION 154

Which of the following interfaces can be configured using the configuration wizard?

- A. Primary only
- B. Primary and inpath0_0
- C. Inpath0_0 only
- D. Primary and auxiliary

Answer: B

NEW QUESTION 155

The key difference between the "Degraded" status and the "Critical" status is:

- A. With degraded, only one alarm has been triggered, whereas with critical, two or more alarms were triggered
- B. With degraded, the Steelhead appliance is still optimizing traffic, whereas with critical the Steelhead may or may not be optimizing
- C. With degraded, there is no optimization due to a software problem, whereas with critical there is no optimization due to a hardware problem
- D. With both degraded and critical, optimization functions as normal however administrator attention is required

Answer: B

NEW QUESTION 159

What are basic components of the Interceptor appliance? (Select 3)

- A. Load Balancing
- B. Redirection
- C. Peer Affinity

- D. Optimization
- E. Store SDR data

Answer: ABC

NEW QUESTION 161

Which of the following is NOT a valid in-path rule on the Interceptor appliance?

- A. Redirect
- B. Pass-through
- C. Discard
- D. Deny
- E. Fair-peering

Answer: E

NEW QUESTION 162

An employee who has just installed Steelhead Mobile onto her workstation notices that she never gets any reduction. It always says 0%.

The status of the Mobile client appears to be: Optimization State: Healthy

Controller Status: Connected: Branch

The reason she is seeing 0% reduction statistics is:

- A. Location Awareness is in effect
- B. The Steelhead appliance in the branch office has currently failed
- C. There are no more Steelhead Mobile licenses available
- D. The Steelhead Mobile Controller is not available as it has been relocated to a branch office
- E. Steelhead Mobile does not work on workstations, only laptops

Answer: A

NEW QUESTION 166

Which of the following is not a policy type available on the CMC appliance?

- A. Optimization policy
- B. SDR policy
- C. Security Policy
- D. Networking policy

Answer: B

NEW QUESTION 170

When implementing WCCP, a Steelhead appliance is connected using which Steelhead appliance interface for optimization?

- A. lan0_0
- B. wan0_0
- C. Primary
- D. AUX
- E. Remote

Answer: B

NEW QUESTION 175

A fat pipe is a network that can carry large amounts of data without significantly degrading transmission speed.

If you have a fat pipe that is not being fully utilized and you are experiencing WAN congestion, latency, and packet loss as a result of the limitations of regular TCP, which of the following RiOS features will help? (Select 2)

- A. Enable Forced Burst TCP (FB-TCP)
- B. Enable HighSpeed TCP (HSTCP)
- C. Disable admission control
- D. Lower the Advanced Security Checkflow Parameter (ASCP)
- E. Enable Maximum TCP (MX-TCP)
- F. Enable disk encryption

Answer: BE

NEW QUESTION 176

If the Steelhead Mobile client optimization is being blocked by the client firewall, you must set which port on the client firewall to allow incoming traffic?

- A. 7744
- B. 7800
- C. 7801
- D. 7810
- E. 7820

Answer: C

NEW QUESTION 178

Steelhead appliance models vary according to which of the following attributes?

1. Number of concurrent TCP connections that can be optimized
2. Amount of disk storage available for Scalable Data Referencing
3. Level of encryption supported
4. Maximum possible in-path interfaces

- A. 1, 2, and 3
B. 1, 2, and 4
C. 2, 3, and 4
D. 1, 3, and 4
E. 1, 2, 3, and 4

Answer: B

NEW QUESTION 179

When implementing datastore synchronization, a master and backup Steelhead appliance:

1. Must be within 10 ms of latency between the synchronizing Steelhead appliances
2. Must have the same datastore size
3. Must be running the same major version RiOS software
4. Must have the same hostname

- A. 1, 2, and 3
B. 2 and 3
C. 2, 3, and 4
D. 3 and 4
E. 1, 2, 3, and 4

Answer: A

NEW QUESTION 183

In what file system can the Steelhead Mobile client software be installed?

- A. FAT
B. NTFS
C. FAT32
D. UFS
E. EXT3

Answer: B

NEW QUESTION 188

What effect will enable SDR-M (Scalable Data Referencing – Memory) have on a Steelhead appliance in production?

- A. An increase in overall LAN throughput
B. SDR would occur in RAM until flushed to disk
C. An increase in overall WAN throughput
D. SDR would occur on disk and backed up to RAM for future lookups
E. SDR must occur over the primary interface directly to RAM

Answer: A

NEW QUESTION 192

Steelhead Mobile licensing is based on what model?

- A. Concurrent usage
B. Per seat
C. Hybrid per seat/concurrent usage
D. Steelhead Mobile does not use a licensing model as long as you do not exceed the capacity of the SMC

Answer: A

NEW QUESTION 193

Steelhead Mobile enables you to: (Select 3)

- A. Optimize UDP traffic
B. Optimize ICMP traffic
C. Optimize TCP traffic
D. Optimize satellite TCP traffic
E. Optimize TCP traffic over General Packet Radio Service (GPRS)

Answer: CDE

NEW QUESTION 198

Once a Steelhead Mobile client connects to Steelhead Mobile Controller (SMC), it retrieves what from the SMC? (Select 2)

- A. Secure vault key

- B. License
- C. The Central Management Console (CMC) tree
- D. The Steelhead domain catalog descriptor database (DCDD)
- E. Acceleration Policy

Answer: BE

NEW QUESTION 202

A customer is marking QoS between the Steelhead appliances based on the application (port number) being used. What is the recommended WAN visibility mode?

- A. Correct Addressing
- B. Port Transparency
- C. IPSec tunnel mode
- D. SSL mode

Answer: B

NEW QUESTION 207

Which feature is highly recommended when deploying Steelhead Mobile?

- A. Automatic peering (using enhanced auto-discovery) enabled on Steelhead appliances
- B. Connection forwarding (using port 7850 for neighbor relationships) on Steelhead appliances
- C. Pass-through rules to minimize overlapping opens
- D. Fixed-target rules directed to port 7850 of all branch office Steelhead appliances

Answer: A

NEW QUESTION 211

The Steelhead Mobile client software builds an optimized connection to what end device?

- A. The nearest SMC
- B. A Steelhead appliance
- C. A Central Management Console (CMC)
- D. The VPN concentrator
- E. Another Steelhead Mobile client

Answer: B

NEW QUESTION 212

If a file is not optimized for more than one user at a time, this indicates:

- A. Steelhead appliance has entered admission control
- B. Steelhead appliance is configured with the incorrect speed or duplex on the Primary interface
- C. Steelhead appliance is configured with the incorrect speed or duplex on the in-path interfaces
- D. Steelhead appliance is not able to acquire a "File Hold Key (FHK)"
- E. Steelhead appliance is not able to acquire an "Opportunistic Lock (oplock)"
- F. Steelhead appliance is not able to acquire a "Double Link (doulink)"

Answer: E

NEW QUESTION 214

When implementing PBR, a Steelhead appliance is connected to the router using which Steelhead appliance interface?

- A. lan0_0
- B. wan0_0
- C. Primary
- D. AUX
- E. Remote

Answer: B

NEW QUESTION 218

Which of the following are supported features on the Interceptor appliance running version 2.0.x? (Select 3)

- A. EtherChannel
- B. Full transparency
- C. Port transparency
- D. QoS
- E. NetFlow

Answer: ABC

NEW QUESTION 222

Using an Interceptor appliance is an alternative to what network designs? (Select 2)

- A. WCCP
- B. PBR
- C. Connection Forwarding
- D. Fixed-target rules
- E. Peering rules

Answer: AB

NEW QUESTION 227

Which xx50 Steelhead appliance models provide both inpath0_0 and inpath0_1 interfaces without adding additional network cards? (Select 3)

- A. Steelhead 550
- B. Steelhead 6050
- C. Steelhead 1050
- D. Steelhead 250
- E. Steelhead 2050

Answer: BCE

NEW QUESTION 228

Steelhead appliances models vary by supported bandwidth. This bandwidth refers to:

- A. All inbound and outbound traffic
- B. All outbound traffic
- C. All optimized inbound and optimized outbound traffic
- D. All optimized outbound traffic
- E. VoIP traffic only

Answer: D

NEW QUESTION 232

What is the total number of optimized concurrent TCP connections supported on an Interceptor appliance?

- A. 100,000
- B. 200,000
- C. 300,000
- D. 500,000
- E. 1,000,000

Answer: E

NEW QUESTION 236

What are the three WAN visibility modes supported in the Steelhead appliances?

- A. Normal mode, Tunnel mode, Secure mode
- B. Normal mode, Correct Addressing, Tunnel mode
- C. Secure mode, Tunnel mode, Full Transparency mode
- D. Correct Addressing, Port Transparency, Full Transparency

Answer: D

NEW QUESTION 241

How can Steelhead Mobile client software be distributed directly from the Steelhead Mobile Controller (SMC)? (Select 2)

- A. HTTPS
- B. HTTP
- C. FTP
- D. TFTP
- E. NFS

Answer: AB

NEW QUESTION 244

What licenses are installed with a Steelhead appliance when purchased? (Select 3)

- A. Scalable Data Referencing (SDR)
- B. Windows File Servers
- C. SSL
- D. Sybase database applications
- E. Microsoft Exchange

Answer: ABE

NEW QUESTION 245

When Adaptive Compression is used on a Steelhead appliance, what determines the switch to dynamically disable Lempel-Ziv compression if compression is

deemed ineffective?

- A. Periodic samples of data flows
- B. Packet by packet analysis
- C. Continual TCP session analysis
- D. Reduction throttle signal from the Central Management Console (CMC)
- E. Average available bandwidth

Answer: A

NEW QUESTION 248

Login to the CMC appliance can be authenticated against what type servers? (Select 3)

- A. RADIUS
- B. Local
- C. XAUTH
- D. TACACS+
- E. Kerberos

Answer: ABD

NEW QUESTION 251

When deploying a Steelhead appliance in a physical in-path configuration, the cable between the Steelhead and the router should be:

- A. Straight-through
- B. Crossover
- C. Token Ring
- D. None of the above

Answer: B

NEW QUESTION 254

To ensure peak operational performance, it is recommended that the Steelhead appliance be rebooted:

- A. Once every week
- B. Once every month
- C. Rebooting the Steelhead appliance is not recommended as a performance enhancing maintenance activity
- D. Rebooting the Steelhead appliance is not recommended because all network activity stops until it comes back

Answer: C

NEW QUESTION 259

What are the major components required to allow optimization via the Steelhead Mobile client? (Select 3)

- A. Steelhead appliance
- B. Central Management Console
- C. Steelhead Mobile Controller
- D. Steelhead Mobile client host, such as a laptop or desktop

Answer: ACD

NEW QUESTION 264

Rules that dictate the types of TCP traffic that a Steelhead Mobile client should optimize are configured in the:

- A. Acceleration policy
- B. Authorization policy
- C. Peering rules
- D. Fixed target policy

Answer: A

NEW QUESTION 266

In a network where QoS classification and enforcement is being performed by the customer's carrier-managed WAN routers and QoS traffic classification is based on IP address and/or destination TCP port, what WAN visibility mode should be employed for TCP sessions optimized by the Steelhead appliances to maintain interoperability with the existing QoS strategy?

- A. Full Transparency
- B. Correct Addressing
- C. Port Transparency
- D. Port Mapping

Answer: A

NEW QUESTION 270

Which of the following platforms provide support for HighSpeed TCP?

- A. All Steelhead modules designed for large offices
- B. All models except the desktop units
- C. All appliance models
- D. Only the mid-size office
- E. Only really big appliances 80lbs or greater

Answer: C

NEW QUESTION 271

How can I obtain Virtual Steelhead appliance license keys?

- A. Using the Riverbed public support site
- B. Contacting VMware
- C. Virtual Steelhead appliance license keys are included in the install package
- D. Base licenses are not required
- E. Only SSL licenses are not included

Answer: A

NEW QUESTION 275

To help secure the server private key on the server-side Steelhead appliance, which of the following features can be used?

- A. TACACS+ authentication
- B. RADIUS authentication
- C. Secure Vault
- D. Datastore encryption

Answer: C

NEW QUESTION 277

Which of the following is a valid type of in-path rule on the Steelhead appliance? (Select 3)

- A. Pass Through
- B. Dynamic Detection
- C. Auto Discover
- D. Fixed-Target
- E. Real-Time

Answer: ACD

NEW QUESTION 278

A major difference between MX-TCP and HighSpeed TCP is:

- A. MX-TCP backs off in the case of congestion, HighSpeed TCP does not
- B. HighSpeed TCP backs off in the case of congestion, MX-TCP does not
- C. MX-TCP can use TCP window scaling, HighSpeed TCP cannot
- D. HighSpeed TCP can use TCP options, MX-TCP cannot

Answer: B

NEW QUESTION 282

Which two parameters are required when configuring a fixed-target rule?

- A. The target IP address and subnet mask of the target Steelhead appliance
- B. The TCP option number for auto-discovery
- C. The target Steelhead appliance and destination port number
- D. The source IP address and source port number of the client traffic

Answer: C

NEW QUESTION 283

What is the default WAN visibility mode?

- A. Correct Addressing
- B. Port Transparency
- C. Full Addressing
- D. Full Transparency
- E. Transparency

Answer: A

NEW QUESTION 285

What are the default port labels on the Steelhead appliance? (Select 3)

- A. Secure

- B. Interactive
- C. RBT-Proto
- D. Fixed-Target
- E. Pass-Through

Answer: ABC

NEW QUESTION 290

In a single in-path design, in order for CIFS prepopulation to properly function at a branch office, the Primary interface of the Steelhead appliance must be:

- A. On the LAN side branch office Steelhead
- B. Directly connected to the AUX interface
- C. On the same switch as the WAN side interface
- D. In the same subnet as the file server

Answer: A

NEW QUESTION 293

Can you manage your Virtual Steelhead appliance from a Central Management Console?

- A. Yes, this is possible
- B. Only on out-of-path deployments
- C. Only on in-path deployments
- D. There is a dedicated management device for Virtual Steelhead appliances
- E. You can only manage your Virtual Steelhead appliances using a virtualized console

Answer: A

NEW QUESTION 294

What is the default action of a Steelhead appliance when it hits the bandwidth limit?

- A. Fail-to-wire
- B. Inbound Optimized traffic is shaped to the specifications of the Steelhead appliance
- C. Passthrough all connections
- D. Passthrough new connections
- E. Outbound Optimized traffic is shaped to the specifications of the Steelhead appliance

Answer: E

NEW QUESTION 298

What are valid WAN visibility modes of the Steelhead appliance? (Select 3)

- A. Correct Addressing
- B. Port Transparency
- C. Full Addressing
- D. Full Transparency
- E. Transparency

Answer: ABD

NEW QUESTION 301

Datastore synchronization can be used in which of the following deployments?

- A. Serial in-path
- B. Logical in-path
- C. Server-side out-of-path
- D. Parallel in-path
- E. All of the above

Answer: E

NEW QUESTION 303

Steelhead appliances increase. (Select 2)

- A. Application performance
- B. Data transfer speed over the WAN
- C. Data transfer speed over the LAN
- D. Quality of service
- E. WORM stability
- F. Prototyping

Answer: AB

NEW QUESTION 306

What does the Transport Streamlining module in RiOS do? (Select 2)

- A. Reduces transport protocol inefficiencies
- B. Prioritizes application traffic
- C. Virtually expands TCP windows
- D. Reduces WAN round trips at the application layer

Answer: AC

NEW QUESTION 309

After deployment of Steelhead appliances, a certain backup application shows poor bandwidth reduction. After disabling the backup application's native compression algorithm, the bandwidth reduction statistics on the Steelhead appliances suddenly improve significantly. Which of the following are likely causes for the increased bandwidth reduction?

- A. The native compression algorithm of the backup application could not be compressed further
- B. The application-level protocol used by the backup application is not recognized by the Steelhead appliances
- C. The Steelhead appliances were not able to effectively perform TCP optimizations
- D. There should be no difference between compressed and uncompressed traffic

Answer: A

NEW QUESTION 314

What is the packaging distribution format for the Virtual Steelhead appliance?

- A. Open Virtual Appliance
- B. Open Virtual Image
- C. Open Virtual Release
- D. Open Virtual Source
- E. Open Virtual Package

Answer: A

NEW QUESTION 319

With branch warming enabled, new data transferred between the Steelhead Mobile client and a server will be populated into: (Select 3)

- A. The Steelhead Mobile client datastore
- B. The local office Steelhead appliance datastore
- C. The server-side Steelhead appliance datastore
- D. Datastore will not be populated
- E. The Steelhead Mobile Controller datastore

Answer: ABC

NEW QUESTION 323

What WAN traffic problems do Steelhead appliances overcome? (Select 3)

- A. Number of connections per second
- B. Data deduplication
- C. Bandwidth
- D. Latency
- E. TCP window size
- F. Optimization

Answer: CDE

NEW QUESTION 327

A Steelhead appliance can be configured to automatically send an email to a preconfigured email address in the event of a failure. Where is this done? (Select 3)

- A. GUI
- B. CLI
- C. RADIUS/TACACS+
- D. Can be done via the Central Management Console
- E. DNS server

Answer: ABD

NEW QUESTION 331

The default action performed by the Steelhead appliance when it receives a packet with an existing DSCP value 46 is to:

- A. Override the value with a default of 0
- B. Override the value with the value of AF11
- C. Reflect the value received by the original packet
- D. Reflect the value returned by the symmetric TCP flow

Answer: C

NEW QUESTION 336

In an in-path deployment, when a Steelhead appliance fails to wire, the Steelhead appliance acts as a:

- A. Straight-through cable
- B. Crossover cable
- C. Router
- D. Firewall
- E. None of the above

Answer: B

NEW QUESTION 341

Which of the following is a benefit of the Riverbed Services Platform (RSP) on the Steelhead appliance? (Select 2)

- A. Optimizes VoIP flowing through proxy servers
- B. Removes the need for specific servers in the branch offices
- C. Allows for continued operations of specific functionality in the event of a WAN failure
- D. Provides parallel forwarding domains for asymmetrical routing

Answer: BC

NEW QUESTION 346

Which of the following local accounts are available by default on a Steelhead appliance? (Select 2)

- A. admin
- B. riverbed
- C. monitor
- D. rvbd
- E. root

Answer: AC

NEW QUESTION 348

Some applications are designed to open many TCP connections to accomplish required data transfers. Many of these connections are short-lived, yet each requires significant overhead to initiate communications. What RiOS feature was designed to reduce the overhead of these short-lived TCP connections?

- A. HSTCP
- B. MX-TCP
- C. Virtual Window Expansion
- D. Connection Pooling
- E. Transport Streamlining

Answer: D

NEW QUESTION 352

What is the default action of a Steelhead appliance when it enters admission control?

- A. Fail-to-wire
- B. Fail-to-block
- C. Passthrough all connections
- D. Passthrough new connections
- E. Drop new connections

Answer: D

NEW QUESTION 356

In which menu of the Steelhead Management Console do you configure WAN visibility modes?

- A. In-Path Rules
- B. Peering Rules
- C. Connection Forwarding
- D. Services
- E. Simplified Routing

Answer: A

NEW QUESTION 360

What does the RiOS acronym stand for?

- A. Riverbed interact Operations Shares
- B. Riverbed Optimization System
- C. Riverbed integrating Operating System
- D. Riverbed is Orange Shamrocks
- E. Riverbed is Outstandingly Simple
- F. Riverbed Internet Optimization System
- G. Riverbed Open Standards
- H. Riverbed Intranet Optimization System

Answer: B

Explanation: The Riverbed Optimization System (RiOS) is the software platform that powers SteelHead appliances from Riverbed.

References:

<http://www.wansolutionworks.com/RiOS.asp>

NEW QUESTION 363

Data Streamlining brings what benefits?

- A. WAN bandwidth reduction by 60-95%
- B. Eliminates redundant data transfers at the byte-sequence level
- C. Performs cross-application optimization
- D. Provides compression
- E. All of the above

Answer: E

NEW QUESTION 365

Which of the following deployment methods can NOT be used simultaneously on a single Steelhead appliance?

- A. Logical In-path / Physical In-path
- B. Server-side out-of-path / Physical In-path
- C. Server-side out-of-path / Logical In-path
- D. All methods above can be configured on a single Steelhead appliance simultaneously

Answer: A

NEW QUESTION 370

Application Streamlining in a Steelhead appliance or Steelhead Mobile does what?

- A. Reduces round trips over the WAN for all TCP traffic
- B. Reduces round trips over the WAN for supported applications
- C. Gives applications priority using our QoS engine
- D. All of the above

Answer: B

NEW QUESTION 373

When deploying a Steelhead appliance server-side out-of-path in the data center, what will be the source IP address seen by the destination server in the data center?

- A. The client PC's IP address
- B. The client-side Steelhead appliance's Primary IP address
- C. The client-side Steelhead appliance's In-path IP address
- D. The server-side Steelhead appliance's Primary IP address

Answer: D

NEW QUESTION 374

How many in-path rules will a WAN-initiated single connection execute on a Steelhead appliance?

- A. 1
- B. 2
- C. 3

Answer: A

NEW QUESTION 375

When enabling the IPSec feature on the Steelhead appliances:

- A. Both optimized and pass-through traffic are encrypted
- B. Only optimized traffic is encrypted
- C. IPSec encrypted traffic is optimized
- D. Only control traffic is encrypted, not user traffic

Answer: B

NEW QUESTION 376

Which of the following are considered to be root causes of poor application performance over wide area networks? (Select 3)

- A. Application protocol chattiness
- B. Transport protocol inefficiencies
- C. Proxy ARP
- D. Insufficient bandwidth

E. Daylight Savings Time settings

Answer: ABD

NEW QUESTION 380

What are valid datastore encryption types? (Select 4)

- A. No encryption
- B. AES_128
- C. AES_64
- D. AES_256
- E. AES_192

Answer: ABDE

NEW QUESTION 385

Name the areas where the Steelhead appliance will be beneficial. (Select 3)

- A. Accelerate chatty applications that use well known protocols such as CIFS and MAPI
- B. Save bandwidth on LAN links
- C. With a single TCP session, effectively use bandwidth on high-speed WAN links
- D. Reduce UDP traffic on the WAN by engaging Riverbed Professional Services
- E. Remove the traffic load from MAPI servers

Answer: ACD

NEW QUESTION 386

What combinations of WAN visibility modes can simultaneously be configured on Steelhead appliances?

- A. It can never be done
- B. Only Port Transparent
- C. Only Correct Addressing
- D. Only Full Addressing
- E. Full Transparency, Port Transparency and Correct Addressing can be configured simultaneously

Answer: E

NEW QUESTION 391

Which trunking protocols are supported by the Steelhead appliance?

- A. 802.1Q
- B. 802.1P
- C. 802.1AD
- D. Dynamic Etherchannel

Answer: A

NEW QUESTION 395

When MAPI prepopulation is enabled, what is default TCP keep-alive time used to prepopulate the Steelhead appliance with emails and attachments?

- A. 24 hours
- B. 48 hours
- C. 72 hours
- D. 96 hours

Answer: D

NEW QUESTION 399

What does the Application Streamlining module in RiOS do?

- A. Eliminates redundant bytes from transfers
- B. Prioritizes application traffic
- C. Eliminates transport protocol inefficiencies
- D. Reduces WAN round trips at the application layer
- E. All of the above
- F. None of the above

Answer: D

NEW QUESTION 400

What action should be taken when the Steelhead appliance datastore is full?

- A. Disconnect all users
- B. Expand disk capacity
- C. No action is required

- D. Clean the datastore
- E. Insert a USB key for extra storage

Answer: C

NEW QUESTION 404

What does the Data Streamlining module in RiOS do?

- A. Eliminates redundant bytes from transfers
- B. Prioritizes application traffic
- C. Reduces transport protocol inefficiencies
- D. All of the above
- E. None of the above

Answer: A

NEW QUESTION 407

A user uploads a Microsoft Word document to a server across the network using the file transfer protocol (FTP). The file has been seen before by the Steelhead appliances that are optimizing the link and so the user experiences warm performance. A second user at the same location downloads the file from the same server using the CIFS protocol. This file transfer can be considered:

- A. Cold, the data now travels in another direction so the Steelhead appliances need to relearn the data
- B. Cold, the application protocol is now different so the Steelhead appliances need to relearn the data
- C. Warm, the data has been seen by the Steelhead appliances before making the application protocol irrelevant
- D. Warm, only because the transfer uses CIFS
- E. Partially warm, the Steelhead appliances only need to learn the new data

Answer: C

NEW QUESTION 412

When deploying a Steelhead appliance server-side out-of-path in the data center, which configuration is necessary on the client-side Steelhead appliance in order for the design to function correctly?

- A. An auto-discover rule with the IP address of the server-side Steelhead appliance
- B. A fixed-target rule with the Primary IP address of the server-side Steelhead appliance
- C. A fixed-target rule with the IP address of the destination server
- D. No configuration is required

Answer: B

NEW QUESTION 417

.....

Thank You for Trying Our Product

* 100% Pass or Money Back

All our products come with a 90-day Money Back Guarantee.

* One year free update

You can enjoy free update one year. 24x7 online support.

* Trusted by Millions

We currently serve more than 30,000,000 customers.

* Shop Securely

All transactions are protected by VeriSign!

100% Pass Your 101-01 Exam with Our Prep Materials Via below:

<https://www.certleader.com/101-01-dumps.html>