

300-175 Dumps

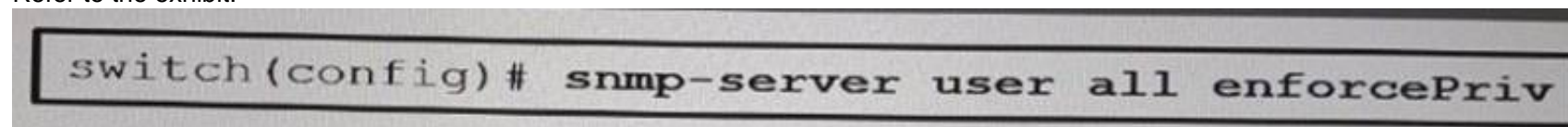
DCUCI Implementing Cisco Data Center Unified Computing (DCUCI)

<https://www.certleader.com/300-175-dumps.html>



NEW QUESTION 1

Refer to the exhibit.



Which option is the expected outcome on the configured switch?

- A. The switch enforces SNMP message encryption for the user all.
- B. SNMP requires encryption for all incoming requests.
- C. The switch enforces SNMP message encryption for all users.
- D. The switch responds with an authorization error for any SNMPv3 PDU requests that use a security level parameter of authNoPriv.

Answer: C

NEW QUESTION 2

Which two Cisco UCS C-Series server components are hot-swappable? (Choose two.)

- A. mezzanine card
- B. PCIe slot
- C. internal cooling fan
- D. power supply
- E. memory riser

Answer: CD

NEW QUESTION 3

You need to automate the management of servers, networks, and storage on a Cisco UCS system, by using PowerShell. Which tool should you use?

- A. Cisco UCS Platform Emulator
- B. Cisco UCS Python SDK
- C. Cisco UCS Automation Tool
- D. Cisco UCS PowerTool Suite

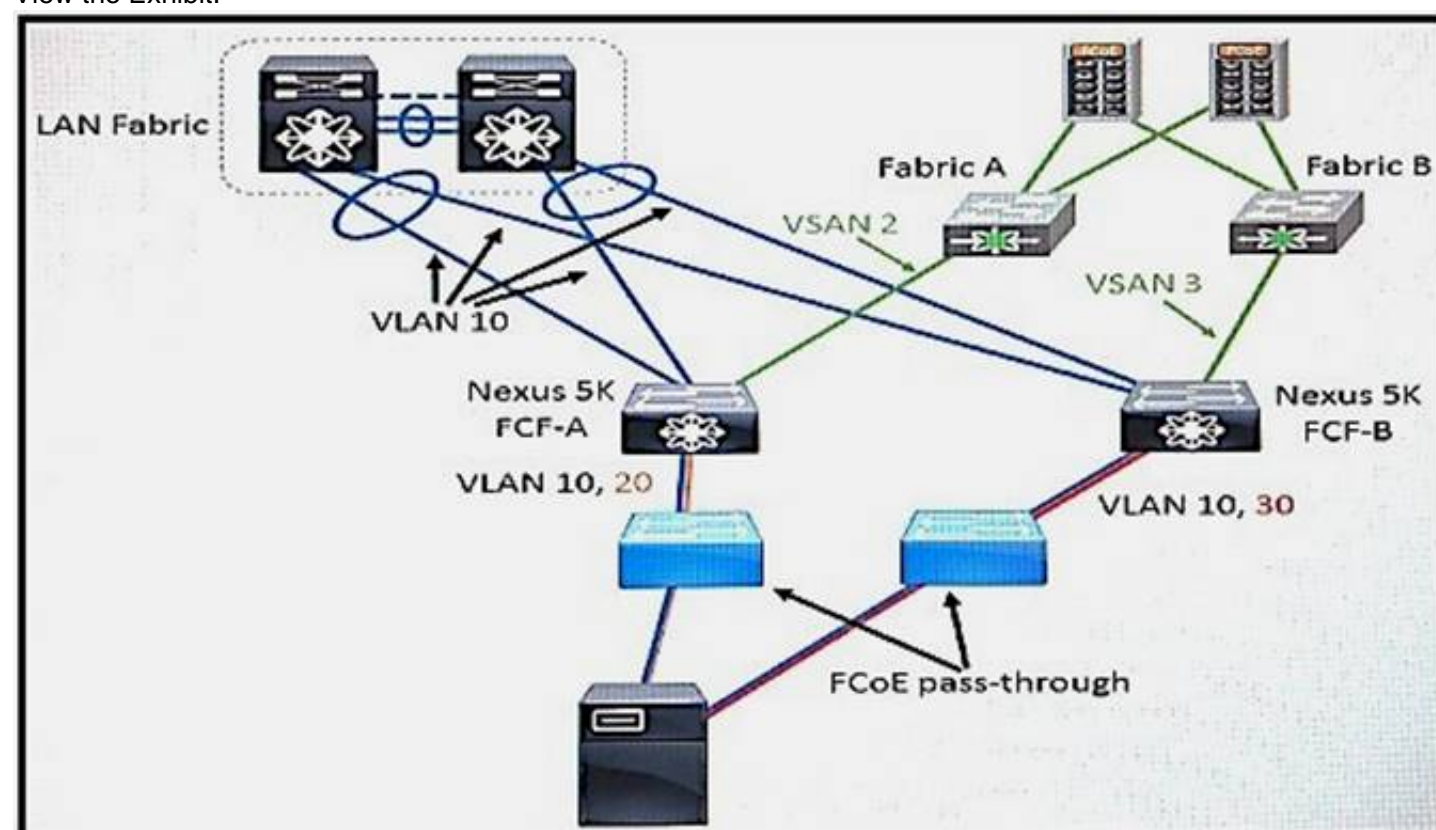
Answer: D

Explanation: Reference:

<http://www.cisco.com/c/en/us/solutions/collateral/data-center-virtualization/microsoft-applications-on-ucs/broch>

NEW QUESTION 4

View the Exhibit.



Refer to the exhibit. Which type of FCoE topology is displayed?

- A. direct-attach
- B. remote-attach
- C. vPC
- D. FCoE with Cisco 2232 Fabric Extenders

Answer: B

Explanation: Reference:

https://www.cisco.com/c/en/us/products/collateral/switches/nexus-7000-series-switches/white_paper_c11-56040

NEW QUESTION 5

You are disassociating a service profile from a server. You must associate the service profile to another server. Which two pokes in the service prevent the service profile can prevent the service profile from being associated to a different server? (Choose two.)

- A. server pool policy qualification
- B. LAN connectivity
- C. SAN connectivity
- D. power management
- E. maintenance

Answer: AD

NEW QUESTION 6

Which two Cisco UCS firmware are contained in the Cisco UCS Infrastructure software bundle? (Choose two.)

- A. Cisco I/O module firmware
- B. Cisco UCS IMC
- C. Cisco UCS BIOS
- D. Cisco UCS fabric interconnects firmware
- E. Cisco UCS adapters

Answer: AD

Explanation:

for A, D: "A" BUNDLE

Infrastructure software bundle — This bundle is also called the A bundle. It contains the firmware images that the fabric interconnects, IO Modules, and Cisco UCS Manager require to function.

"B" BUNDLE

B-Series server software bundle — Also called the B bundle, this bundle contains the firmware images that the B-Series blade servers require to function, such as adapter, BIOS, CIMC, and board controller firmware. Release Bundle Contents for Cisco UCS Manager, Release 3.1 provides details about the contents of the B-Series server software bundle.

Reference:

https://www.cisco.com/c/en/us/td/docs/unified_computing/ucs/ucs-manager/GUI-User-Guides/FirmwareMgmt/3

[b_UCSM_GUI_Firmware_Management_Guide_3_1_chapter_01.html](https://www.cisco.com/c/en/us/td/docs/unified_computing/ucs/ucs-manager/GUI-User-Guides/FirmwareMgmt/3/b_UCSM_GUI_Firmware_Management_Guide_3_1_chapter_01.html)

NEW QUESTION 7

Which Cisco UCS blade server supports the highest I/O throughput?

- A. Cisco UCS B420 M3 Blade Server
- B. Cisco UCS B200 M3 Blade Server
- C. Cisco UCS B22 M3 Blade Server
- D. Cisco UCS B200 M4 Blade Server

Answer: A

Explanation: B420 M4 = 160G I/O BW

https://www.cisco.com/c/en/us/products/collateral/servers-unified-computing/ucs-b-series-blade-servers/data_sh

https://www.cisco.com/c/en/us/products/collateral/servers-unified-computing/ucs-b-series-blade-servers/data_sh

https://apps.cisco.com/ccw/cpc/guest/content/ucsModelDetails/model_b200m4 <https://www.cisco.com/c/en/us/products/collateral/servers-unified-computing/ucs-b200-m4-blade-server/datashe>

NEW QUESTION 8

Refer to the exhibit.

```
CISCO-A# scope org /
CISCO-A /org # create-maint-policy maint
CISCO-A /org/maint-policy* # set reboot-policy user-ack
CISCO-A /org/maint-policy* # set on-next-boot
CISCO-A /org/maint-policy* # set soft-shutdown-timer 300-secs
CISCO-A /org/maint-policy* # commit-buffer
CISCO-A /org/maint-policy #
```

Which result of implementing the maintenance policy is true?

- A. The FSM applies the waiting changes when the host OS resets.
- B. The Cisco UCS server reboots as soon as the change is made to the service profile.
- C. The Cisco UCS server reboots at a scheduled time.
- D. The Cisco UCS server reboots 300 seconds after the policy is applied.

Answer: A

NEW QUESTION 9

Which Cisco solution addresses the challenge of managing multiple large-scale Cisco UCS domains by providing streamlined management of up to 10,000 servers across hundreds of sites?

- A. Cisco UCS Central
- B. Cisco UCS Director
- C. Cisco UCS Domain Manager
- D. Cisco UCS Manager

Answer: A

Explanation: https://www.cisco.com/c/en/us/products/collateral/servers-unified-computing/ucs-central-software/data_sheet_c

NEW QUESTION 10

Which two statements describe the full state type of backup? (Choose two.)

- A. It is a binary file.
- B. It cannot be used to restore the system during disaster recovery.
- C. It can use this file for an import.
- D. It can be used only on a system that is running the same version as the system from which the backup file was exported.
- E. It is an XML file.

Answer: AD

NEW QUESTION 10

You need to configure a Fibre Channel device alias named TEST for a device that is attached to port fc1./9 of a Cisco Nexus Series switch in a Cisco UCS system. Based on the output below, which command set should you use?

| SITEA-MDS-Fabric-A# show flogi database | | | | |
|---|------|----------|-------------------------|-------------------------|
| INTERFACE | VSAN | FCID | PORT NAME | NODE NAME |
| fc1/5 | 100 | 0x6b0300 | 50:00:14:42:d0:0c:f5:00 | 50:00:14:40:47:b0:0c:f5 |
| fc1/6 | 100 | 0x6b0100 | 50:00:14:42:d0:0c:f5:01 | 50:00:14:40:47:b0:0c:f5 |
| fc1/7 | 50 | 0x550000 | 50:00:14:42:d0:0c:f5:20 | 50:00:14:40:47:a0:0c:f5 |
| fc1/8 | 50 | 0x550100 | 50:00:14:42:d0:0c:f5:21 | 50:00:14:40:47:a0:0c:f5 |
| fc1/9 | 50 | 0x550200 | 50:00:14:42:d0:0c:f5:20 | 50:00:14:40:47:b0:0c:f5 |
| fc1/10 | 50 | 0x550300 | 50:00:14:42:d0:0c:f5:21 | 50:00:14:40:47:b0:0c:f5 |
| fc1/11 | 100 | 0x6b0403 | 50:00:14:42:d0:0c:f5:00 | 20:64:54:7f:01:23:45:67 |
| Total number of flogi = 7. | | | | |

- A. SITE-A-MDS-Fabric-A# device-alias databaseSITE-A-MDS-Fabric-A (device-alias-db)# device-alias name TEST pwwn 50:00:14:40:47:b0:0c:f5SITE-A-MDS-Fabric-A (config-device-alias-db)# device-alias commit
- B. SITE-A-MDS-Fabric-A# configure terminalSITE-A-MDS-Fabric-A (config)# device-alias databaseSITE-A-MDS-Fabric-A (config-device-alias-db)# device-alias name TEST pwwn 50:00:14:42:d0:0c:f5:20SITE-A-MDS-Fabric-A (config-device-alias-db)# device-alias commit
- C. SITE-A-MDS-Fabric-A# configure terminalSITE-A-MDS-Fabric-A (config)# device-alias databaseSITE-A-MDS-Fabric-A (config-device-alias-db)# device-alias name TEST pwwn 50:00:14:40:47:b0:0c:f5SITE-A-MDS-Fabric-A (config-device-alias-db)# device-alias commit
- D. SITE-A-MDS-Fabric-A# configure terminalSITE-A-MDS-Fabric-A (config)# device-alias databaseSITE-A-MDS-Fabric-A (config-device-alias-db)# device-alias name TEST pwwn 50:00:14:42:d0:0c:f5:20SITE-A-MDS-Fabric-A (config-device-alias-db)# exit

Answer: A

NEW QUESTION 12

You must secure the default user account in a Cisco UCS domain. Which action do you take?

- A. Set an account password during the initial system setup.
- B. Rename the account.
- C. Delete the account.
- D. Set the account to lock after a specified number of failed attempts.

Answer: A

Explanation: Reference:

https://www.cisco.com/c/en/us/td/docs/unified_computing/ucs/ucs-central/GUI-User-Guides/Authentication/1-5 (Page# 2)

NEW QUESTION 13

Which two items represent the features of Call Home on the Cisco Unified Computing System? (Choose two.)

- A. send fault details to Cisco TAC
- B. SNMP trap receiver
- C. syslog
- D. central repository of normalized fault data
- E. send email alerts to administrators

Answer: AE

NEW QUESTION 15

Which two statements about the service profile configuration options in the Cisco UCS Manager GUI are true? (Choose two.)

- A. It can be generated automatically from the service profile template.
- B. It can be derived from the chassis discovery policy.
- C. It can be derived from the initial template or the updating template.
- D. It can be configured by cloning a virtual machine profile.
- E. It can be configured by using the chassis connectivity policy.

Answer: AC

Explanation: Reference: https://www.cisco.com/en/US/docs/unified_computing/ucs/sw/gui/config/guide/141/UCSM_GUI_Configuration

NEW QUESTION 17

Which statement about RBAC locales in a Cisco UCS system is true?

- A. Locales are user environment settings such as currency, language, time, and date format
- B. Locales are groups of organizations that are tied to users for authorization purposes
- C. AAA users are called locales in a local database for AAA
- D. Locales are user settings in local and external user databases for AAA

Answer: B

NEW QUESTION 22

For which reason would a user choose UEFI boot over Legacy mode?

- A. To support multiple GPU cards
- B. For checksum verification of the EFI shell
- C. To support 4k boot drives.
- D. To reduce BIOS POST times

Answer: C

NEW QUESTION 26

You need to configure a new Fibre Channel port channel from the Cisco UCS Manager GUI. To do this, from the SAN tab, you navigate to SAN Cloud > Fabric A or B > FC Port Channels, and you click the plus sign. In the popup window, you specify the Fibre Channel port channel name and ID.

Which two rules should you follow when you set the Fibre Channel port channel name and ID? (Choose two.)

- A. The Name field must be a number.
- B. The ID field can contain ASCII characters, except for spaces.
- C. The Name field is optional, but it cannot contain spaces.
- D. The Fibre Channel port channel ID is optional.
- E. The Fibre Channel port channel ID must be a number.

Answer: CE

Explanation: The identifier for the port channel.

Enter an integer between 1 and 256. This ID cannot be changed after the port channel has been saved. Name field A user-defined name for the port channel.

This name can be between 1 and 16 alphanumeric characters. You cannot use spaces or any special characters other than - (hyphen), _ (underscore), : (colon), and . (period), and you cannot change this name after the object has been saved.

The Fibre Channel port channel ID is NOT optional

The ID field CANNOT contain ASCII characters, OR spaces. The Name field must be a number IS NOT CORRECT.

The Fibre Channel port channel ID must be a number. IS CORRECT The Name field is optional, but it cannot contain spaces. IS CORRECT

The name field is optional (notice the "Next >" button is available when the name field is empty.

NEW QUESTION 31

You need to configure service profiles for a Cisco UCS system.

What is an advantage of using the Expert wizard to create the service profiles instead of using the Simple wizard?

- A. Only the Expert wizard supports Fabric Interconnect expansion module ports to be used in 10-Gigabit uplink mode or Fibre Channel mode.
- B. Both wizards support the same features, but the Expert wizard provides no configuration options for the features.
- C. The Expert wizard supports stateless computing and mobile service profiles.
- D. The Expert wizard supports all blade generations, whereas the Simple wizard supports only M1 blades, M2 blades, and Cisco VIC cards.

Answer:

B

NEW QUESTION 33

You are connecting a Fibre Channel storage array to Cisco UCS What is a prerequisite to configuring Fibre Channel traffic ?

- A. The VSAN requires a dedicated FCoE VLAN
- B. The VSAN ID must match the FCoE VLAN ID
- C. The VSAN ID must differ from the VLAN ID
- D. The VLANs and the FCoE VLANs can have the same ID

Answer: A

NEW QUESTION 34

You have a Cisco UCS system. You need to create VSAN 100 on 2 Cisco Nexus Series switch and to enable switch port fc1/10 as a member for the VLAN. Which command set should you use?

- A. SITE-A-MDS-Fabric-A# vsan databaseSITE-A-MDS-Fabric-A (vsan-db)# vsan 100 interface fc1/10 SITE-A-MDS-Fabric-A (vsan-db)# vsan database commit SITE-A-MDS- Fabric-A (vsan-db)# exit
- B. SITE-A-MDS-Fabric-A# configure terminal SITE-A-MDS-Fabric-A (config)# vsan databaseSITE-A-MDS-Fabric-A (config-vsan-db)# vsan 100 interface fc1/10 SITE-A-MDS- Fabric-A (config-vsan-db)# exit
- C. SITE-A-MDS-Fabric-A# configure terminal SITE-A-MDS-Fabric-A (config)# vsan databaseSITE-A-MDS-Fabric-A (config-vsan-db)# vsan 100 interface fc1/10 SITE-A-MDS- Fabric-A (config-vsan-db)# vsan database commit
- D. SITE-A-MDS-Fabric-A# configure terminal SITE-A-MDS-Fabric-A (config)# vsan databaseSITE-A-MDS-Fabric-A(config-vsan-db)# vsan 100 interface fc1/10 SITE-A-MDS- Fabric-A (config-vsan-db)# vsan database commit SITE-A-MDS-Fabric-A (config-vsan-db)# exit

Answer: B

Explanation: Reference:

https://www.cisco.com/en/US/docs/storage/san_switches/mds9000/sw/san-os/quick/guide/qcg_vin.html

NEW QUESTION 37

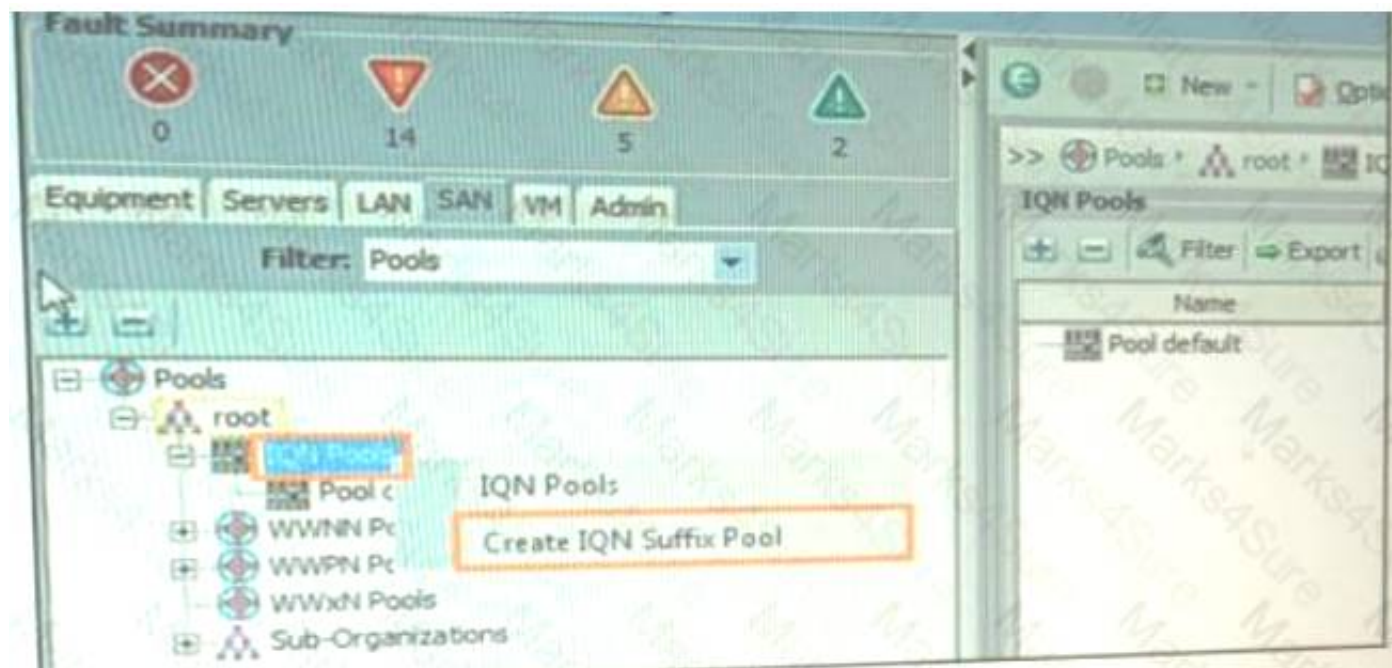
Which option is a prerequisite when implementing iSCSI boot?

- A. The OS must be iBFT compatible.
- B. The boot parameters must be configured in the Global boot policy.
- C. There are no licensing requirements for the storage array.
- D. Each iSCSI initiator must be on the same IP subnet.

Answer: A

NEW QUESTION 42

Refer to the Exhibit.



Refer to the Exhibit. Which two components are needed to create an IQN suffix pool?

- A. description
- B. iSCSI vNIC
- C. prefix
- D. IQN block
- E. initiator IP address

Answer: BC

NEW QUESTION 47

To provide stronger authentication for Cisco UCS manager, You are installing a third-party certificate from a trusted point. Which format must the certificate be in?

- A. DER
- B. PEM

- C. CRT
- D. CER (x.509)

Answer: D

Explanation: Trusted Points

To provide stronger authentication for Cisco UCS Manager, you can obtain and install a third-party certificate from a trusted source, or trusted point, that affirms the identity of your device. The third-party certificate is signed by the issuing trusted point, which can be a root certificate authority (CA) or an intermediate CA or trust anchor that is part of a trust chain that leads to a root CA. To obtain a new certificate, you must generate a certificate request through Cisco UCS Manager and submit the request to a trusted point.

Important:

The certificate must be in Base64 encoded X.509 (CER) format.

NEW QUESTION 50

You have server that has a Cisco UCS CAN. A service profile that has a vNIC and a VHBA is mapped to fabric A. The vNIC is configured to use VLAN 10. VLAN 10 is the native VLAN for the vNIC. The vHBA is configured to use VSAN 2. Which description of the configuration is true?

- A. VSAN 2 can be configured by using VLAN 10 as the FCoE VLAN ID.
- B. VSAN 2 can read traffic on VLAN 5.
- C. VLAN 10 and VSAN 2 must use the same ID.
- D. VSAN 2 can be mapped to their VLANs in fabric A.

Answer: A

NEW QUESTION 53

Which of the Mowing do you use to update the board controller firmware?

- A. local disk
- B. infrastructure firmware
- C. server pool
- D. host firmware package

Answer: D

NEW QUESTION 56

In Cisco UCS Manager 2.2 or later, in order to manually boot from the FlexFlash SD card, which boot option must be in the boot policy used in the service profile?

- A. remote virtual drive
- B. FlexFlash state
- C. SD card
- D. remote boot

Answer: B

NEW QUESTION 60

Refer to the exhibit.

```
UCS-A# scope eth-traffic-mon
UCS-A /eth-traffic-mon # scope fabric a
UCS-A /eth-traffic-mon/fabric # create eth-mon-session EthMonitor10
UCS-A /eth-traffic-mon/fabric/eth-mon-session* # create dest-interface 1 9
UCS-A /eth-traffic-mon/fabric/eth-mon-session/dest-inreface* # set speed 40gbps
UCS-A /eth-traffic-mon/fabric/eth-mon-session/dest-inreface* #commit-buffer
```

Which description of the result is true?

- A. An Ethernet monitoring session was created where traffic may be copied and forwarded to slot 1 port 9 for analysis.
- B. An Ethernet monitoring session was created, activated and committed.
- C. Ethernet traffic from slot 9 port 1 will be copied and forwarded to the destination SPAN port for analysis.
- D. Ethernet traffic from slot 1 port 9 will be copied and forwarded to the destination SPAN port for analysis.

Answer: A

NEW QUESTION 63

Which FEX connection mode do you use to pin the server-facing FEX ports to the connected uplink ports when the FEX is discovered?

- A. port channel
- B. soft pinning
- C. hard pinning
- D. vPC

Answer: C

Explanation: Reference:

https://www.cisco.com/c/en/us/td/docs/unified_computing/ucs/c-series_integration/ucsm2-1/b_UCSM2-1_C-Int

NEW QUESTION 68

Which two features in Cisco UCS Manager can be configured from LAN Uplinks Manager? (Choose two.)

- A. vNIC templates
- B. LAN Pin Groups
- C. VLAN groups
- D. adapter policies
- E. link profiles

Answer: BC

NEW QUESTION 72

Which item represents a secure method of transmitting fault data with Cisco Call Home?

- A. Cisco Transport Gateway
- B. RSADigital Certificate
- C. IPsec
- D. secure XML

Answer: A

NEW QUESTION 73

Which two statements about service profile configuration option in the Cisco UCS Manager GUI are true? (Choose two.)

- A. It can be configured by using the chassis connectivity policy.
- B. it can be derived from the chassis discovery policy.
- C. it can be generated automatically from the service profile template.
- D. it can be configured by cloning a virtual machine profile
- E. it can be derived from the initial template or the updating template.

Answer: AB

NEW QUESTION 77

Drag and drop the fabric interconnect characteristics on the left to the correct Ethernet switching modes on the right.

Egress server traffic can use more than one uplink port.

The fabric interconnect denies forwarded traffic between the uplink ports.

The fabric interconnect runs STP.

vNICs are pinned to the uplink ports.

End-Host Mode

Switch Mode

Answer:

Explanation: Egress server traffic can use more than one uplink port = End-Host Mode

The fabric interconnect denies forwarded traffic between the uplink ports = Switch mode

The fabric interconnect runs STP = Switch Mode

vNic are pinned to the uplink ports = End-Host Mode

NEW QUESTION 80

You must implement a Dynamic FCoE topology that uses ECMP. Which ancillary technology do you use?

- A. OTV
- B. VXLAN
- C. FabricPath
- D. EIGRP

Answer: C

NEW QUESTION 84

Which component is unsupported by the UEFI boot device in the Cisco UCS C-series standalone?

- A. PCI SSD
- B. FCoE
- C. FlexFlash card
- D. USB

Answer: A

NEW QUESTION 86

Which two statements are true concerning the role-based access control specifics of a Cisco Unified Computing System? (Choose two.)

- A. By default, user accounts expire after 90 days; a warning message will be generated 10 days prior to expiration.
- B. A locally authenticated user account is any user account that is authenticated through LDAP, RADIUS or TACACS+.
- D. A user that is assigned one or more roles will be allowed the privileges that are consistent across all of the assigned roles.
- E. All roles include read access to all configuration settings in the Cisco Unified Computing System domain.
- F. If a user maintains a local user account and a remote user account simultaneously, the roles that are defined in the local user account override those that are maintained in the remote user account.

Answer: DE

Explanation: Reference:

https://www.cisco.com/c/en/us/td/docs/unified_computing/ucs/ucs-manager/GUI-User-Guides/AdminManagem

NEW QUESTION 87

Which consideration must be made while performing backup operations within the Cisco UCS Manager?

- A. Rerunning an existing backup operation overwrites the existing backup file.
- B. Scheduled backups are not available.
- C. A user can perform incremental backups of a system configuration.
- D. Each backup destination can have multiple backup operations.

Answer: A

NEW QUESTION 91

Which solution enables Cisco devices to be monitored with automated support capabilities?

- A. Cisco Intelligent Monitoring Agent
- B. Cisco Intersight
- C. connected Service Assurance
- D. Two-Tier Smart Agent

Answer: B

NEW QUESTION 92

Which two options does the Cisco Integrated Management Controller support for managing standalone Cisco UCS C-Series servers? (Choose two.)

- A. SoL
- B. XML
- C. SSH
- D. Virtual KVM
- E. SMASH CLP

Answer: BC

Explanation: The IMC supports industry-standard protocols, including Redfish version 1.01, Intelligent Platform Monitoring Interface Version 2 (IPMI v2), and Simple Network Management Protocol versions 2 and 3 (SNMP v2 and v3).

It also provides an open Extensible Markup Language (XML) API and a command-line interface (CLI). Reference:

<https://www.cisco.com/c/dam/en/us/products/collateral/servers-unified-computing/ucs-c-series-rack-servers/at-a>

NEW QUESTION 97

Open the windows by clicking on the minimized at the bottom of the viewing area. Windows can be minimized by clicking on the [X], repositioned by dragging the title bar, and resized by using the handle at the lower right corner to customize the viewing area.

If you are required to access the devices to complete this scenario, the mouse cursor will use a hand symbol when moved over device icons. Clicking the icon will open a device terminal so you can interact with the hardware.

Open the Questions window and begin by clicking a question number. When you have completed answering all questions, click Done to continue.

Scenario

Use your UCS knowledge on Adapter errorsconfigurations.

```
UCS-A# scope server 1/5
UCS-A/chassis/server # show adapter detail

Adapter:
Id:2
Product Name: Cisco UCS 82598KR-CI
PID: N20-AI002
VID: V01
Vendor: Cisco Systems Inc.
Serial: QCI132300CC
Revision: 0
Mfg Date: 2009-06-13TCO:00:00.000
Slot: N/A
Overall Status: Operable
Conn Path: A, B
Conn Status: Unknown
Managing Instance: B
Product Description: PCI Express Dual Port 10 Gigabit Ethernet Serv
UCS-A/chassis/server #
```

We are working on which Chassis ID?

- A. 1
- B. 2
- C. 3
- D. 4
- E. 5

Answer: A

NEW QUESTION 98

Refer to the exhibit.

```
interface ethernet 1/30
 switchport mode trunk
 switchport trunk allowed vlan 2002
 spanning-tree port type edge trunk

int vfc 130
 switchport mode NP
 switchport trunk allowed vsan 2002
 bind interface eth 1/16
 no shutdown

vsan database
 vsan 2002 interface vfc 130
```

Interface Ethernet 1/30 connects to which of switch?

- A. a Fibre Channel switch that has NPV enabled
- B. an FCoE switch that has NPV enabled
- C. an FCoE switch that has NPV enabled
- D. a Fibre Channel switch that has NPV enabled

Answer: C

NEW QUESTION 103

Open the windows by clicking on the minimized at the bottom of the viewing area. Windows can be minimized by clicking on the [X], repositioned by dragging the title bar, and resized by using the handle at the lower right corner to customize the viewing area.

If you are required to access the devices to complete this scenario, the mouse cursor will use a hand symbol when moved over device icons. Clicking the icon will open a device terminal so you can interact with the hardware.

Open the Questions window and begin by clicking a question number. When you have completed answering all questions, click Done to continue.

Scenario

Use your UCS knowledge on Adapter errorsconfigurations.

```
UCS-A# scope server 1/5
UCS-A/chassis/server # show adapter detail

Adapter:
Id:2
Product Name: Cisco UCS 82598KR-CI
PID: N20-AI002
VID: V01
Vendor: Cisco Systems Inc.
Serial: QCI132300CC
Revision: 0
Mfg Date: 2009-06-13TCO:00:00.000
Slot: N/A
Overall Status: Operable
Conn Path: A, B
Conn Status: Unknown
Managing Instance: B
Product Description: PCI Express Dual Port 10 Gigabit Ethernet Serv
UCS-A/chassis/server #
```

Current Adapter Connected Status is?

- A. Operable
- B. Down
- C. Inoperable
- D. Unknown

Answer: D

NEW QUESTION 107

This question concerns the installation of a Cisco Unified Computing System 5108 fan module.

Drag the options on the left to the right side in the correct order when performing the installation. Note: Not all of the steps on the left will be used.

Power down the Cisco Unified Computing System

Listen for the fans if the chassis is powered on

Push the fan module into the chassis until it seats properly and the
spring latch snaps into place

Power up the Cisco Unified Computing System

Hold the fan module with the spring latch at the top of the module

Answer:

Explanation:

This question concerns the installation of a Cisco Unified Computing System 5108 fan module.

Drag the options on the left to the right side in the correct order when performing the installation. Note: Not all of the steps on the left will be used.

| | |
|--|--|
| Power down the Cisco Unified Computing System | Hold the fan module with the spring latch at the top of the module |
| Listen for the fans if the chassis is powered on | Push the fan module into the chassis until it seats properly and the spring latch snaps into place |
| Push the fan module into the chassis until it seats properly and the spring latch snaps into place | Listen for the fans if the chassis is powered on |
| Power up the Cisco Unified Computing System | |
| Hold the fan module with the spring latch at the top of the module | |

NEW QUESTION 112

You have a Cisco FabricPath network. You must implement vPC+ for a downstream switch. Which three actions should you perform? (Choose three.)

- A. Configure the switch ID on the peer switches.
- B. Establish a peer link between the peer switches.
- C. Configure the downstream switch to use PAgP on EtherChannel.
- D. Connect the downstream switch to a 10-Gb port.
- E. Configure the upstream switch to use PAgP on EtherChannel.
- F. Configure a peer keepalive between the peer switches.

Answer: ABC

NEW QUESTION 117

Which destination(s) are valid for syslog messages for a Cisco UCS Fabric Interconnect?

- A. the log, the monitor and syslog queue
- B. a file
- C. the console and log only
- D. the console, the monitor, and a file

Answer: D

Explanation: http://www.cisco.com/c/en/us/td/docs/unified_computing/ucs/sw/ucsm_syslog/b_Monitoring_Cisco_UCSM_Us

NEW QUESTION 118

Refer to the exhibit.

```
CISCO-FI-A# scope org/
CISCO-FI-A /org* # create service-profile ServiceProfile1 updating-template
CISCO-FI-A /org/service-profile* # set bios-policy bios
CISCO-FI-A /org/service-profile* # set boot-policy boot
CISCO-FI-A /org/service-profile* # set dynamic-vnic-conn-policy dynamic
CISCO-FI-A /org/service-profile* # set ext-mgmt-ip-state pooled
CISCO-FI-A /org/service-profile* # set host-fw-policy fw1
CISCO-FI-A /org/service-profile* # set identity dynamic-uuid derived
CISCO-FI-A /org/service-profile* # set ipmi-access-profile ipmi1
CISCO-FI-A /org/service-profile* # set local-disk-policy local-disk-policy
CISCO-FI-A /org/service-profile* # set maint-policy maint-policy
CISCO-FI-A /org/service-profile* # set mgmt-fw-policy fw-policy
CISCO-FI-A /org/service-profile* # set power-control-policy-power
CISCO-FI-A /org/service-profile* # set scrub-policy scrub
CISCO-FI-A /org/service-profile* # set sol-policy spl
CISCO-FI-A /org/service-profile* # set stats-policy stats-policy
CISCO-FI-A /org/service-profile* # set user-label user1
CISCO-FI-A /org/service-profile* # set vcon-policy vcon
CISCO-FI-A /org/service-profile* # commit-buffer
CISCO-FI-A /org/service-profile
```

Which result of configuring ServiceProfile 1 is true?

- A. It upgrades the firmware immediately.
- B. It restricts editing of ServiceProfile 1 to the members of the user 1 group.
- C. It associates the fw 1 firmware policy to ServiceProfile 1.
- D. It sets the firewall policy on the host to fw 1.

Answer: C

NEW QUESTION 119

You are using UCS version 2.4 or later and need to advertise the identity of a server by using LLDP instead of CDP. Which policy in the vNIC template accomplishes this goal?

- A. Ethernet adapter
- B. network control
- C. QoS
- D. LAN connectivity

Answer: D

NEW QUESTION 120

You want to modify a service profile that is bound to an updating template. Which description of the relationship between the service profile and the updating template is true?

- A. The service profile is updated after the server reboots.
- B. The service profile is updated automatically when the updating template changes.
- C. Change to the updating template apply only to service profile created after template after the template is updated.
- D. The updating template can be changed only before the service profile is implemented

Answer: D

NEW QUESTION 121

ACisco UCS Administrator is planning to complete a firmware upgrade using Auto install. Which two options are prerequisites to run Auto Install? (Choose two.)

- A. Minor fault fixing
- B. Configuration backup
- C. Service profiles unmounted from the blade servers
- D. Time synchronization
- E. Fault suppression started on the blade servers

Answer: BD

Explanation: Reference:

https://www.cisco.com/c/en/us/td/docs/unified_computing/ucs/sw/firmware-mgmt/gui/2-2/b_GUI_Firmware_M

NEW QUESTION 125

Which two protocols does the Cisco Integrated Management Controller support for managing standalone Cisco UCS C-Series servers? (Choose two.)

- A. SMASH CLP
- B. IPMIv2
- C. SoL
- D. SNMPv3
- E. Virtual KVM

Answer: BD

Explanation: <https://www.cisco.com/c/dam/en/us/products/collateral/servers-unified-computing/ucs-c-series-rack-servers/ata-> The IMC supports industry-standard protocols, including Redfish version 1.01, Intelligent Platform Monitoring Interface Version 2 (IPMI v2), and Simple Network Management Protocol versions 2 and 3 (SNMP v2 and v3). It also provides an open Extensible Markup Language (XML) API and a command-line interface (CLI).

NEW QUESTION 130

View the Exhibit.

| SITE-A-MDS-Fabric-A# sh flogi dat | | | | |
|-----------------------------------|------|----------|-------------------------|-------------------------|
| INTERFACE | VSAN | FCID | PORT NAME | NODE NAME |
| fc1/3 | 100 | 0x6b0000 | 50:00:14:42:c0:0c:f5:00 | 50:00:14:40:47:a0:0c:f5 |
| fc1/4 | 100 | 0x6b0200 | 50:00:14:42:c0:0c:f5:01 | 50:00:14:40:47:a0:0c:f5 |
| fc1/5 | 100 | 0x6b0300 | 50:00:14:42:d0:0c:f5:00 | 50:00:14:40:47:b0:0c:f5 |
| fc1/6 | 100 | 0x6b0100 | 50:00:14:42:d0:0c:f5:01 | 50:00:14:40:47:b0:0c:f5 |
| fc1/7 | 50 | 0x550000 | 50:00:14:42:c0:0c:f5:20 | 50:00:14:40:47:a0:0c:f5 |
| fc1/8 | 50 | 0x550100 | 50:00:14:42:c0:0c:f5:21 | 50:00:14:40:47:a0:0c:f5 |
| fc1/9 | 50 | 0x550200 | 50:00:14:42:d0:0c:f5:20 | 50:00:14:40:47:b0:0c:f5 |
| fc1/10 | 50 | 0x550300 | 50:00:14:42:d0:0c:f5:21 | 50:00:14:40:47:b0:0c:f5 |
| fc1/11 | 100 | 0x6b0400 | 20:20:54:7f:ee:fa:de:c0 | 20:64:54:7f:ee:fa:de:c1 |
| fc1/11 | 100 | 0x6b0401 | 20:00:00:25:b5:00:01:02 | 20:00:00:25:b5:00:00:01 |
| fc1/11 | 100 | 0x6b0402 | 20:00:00:25:b5:00:01:00 | 20:00:00:25:b5:00:00:00 |
| fc1/11 | 100 | 0x6b0403 | 20:00:00:25:b5:00:01:03 | 20:00:00:25:b5:00:00:01 |
| fc1/11 | 100 | 0x6b0404 | 20:00:00:25:b5:00:01:01 | 20:00:00:25:b5:00:00:00 |
| Total number of flogi = 13. | | | | |

Refer to the exhibit. You need to configure a Fibre Channel device alias named TEST for a device that is attached to port fc 1/9 of a Cisco Nexus Series switch in a Cisco UCS system.

Which command set should you use?

- A. SITE-A-MDS-Fabric-A# configure terminalSITE-A-MDS-Fabric-A (config)# device-alias databaseSITE-A-MDS-Fabric-A (config-device-alias-db)# device-alias name TEST pwwn 50:00:14:42:d0:0c:f5:20SITE-A-MDS-Fabric-A (config-device-alias-db)# exit
- B. SITE-A-MDS-Fabric-A# configure terminalSITE-A-MDS-Fabric-A (config)# device-alias databaseSITE-A-MDS-Fabric-A(config-device-alias-db)# device-alias name TEST pwwn50:00:14:40:47:b0:0c:f5SITE-A-MDS-Fabric-A (config-device-alias-db)# device-alias commit
- C. SITE-A-MDS-Fabric-A# configure terminalSITE-A-MDS-Fabric-A (config)# device-alias databaseSITE-A-MDS-Fabric-A (config-device-alias-db)# device-alias name TEST pwwn 50:00:14:42:d0:0c:f5:20SITE-A-MDS-Fabric-A (config-device-alias-db)# device-alias commit
- D. SITE-A-MDS-Fabric-A# device-alias databaseSITE-A-MDS-Fabric-A (device-alias-db)# device-alias name TEST pwwn 50:00:14:40:47:b0:0c:f5SITE-A-MDS-Fabric-A (config-device-alias-db)#device-alias commit

Answer: B

Explanation: Reference: https://www.cisco.com/c/en/us/td/docs/switches/datacenter/mds9000/sw/4_1/configuration/guides/cli_4_1/clibo
<https://community.emc.com/thread/170991?start=0&tstart=0>

We need to zone the PWWN (port WWN) of fc1/9, not the NWWN (node WWN) of fc1/9

NEW QUESTION 132

A server discovery policy is defined in Cisco UCS Manager.

Which two actions are initiated by the policy when a new server starts? (Choose two.)

- A. The qualification in the server discovery policy is executed against the server.
- B. The scrub policy is applied to the server, if configured.
- C. A service profile is created for the server with the identity burned into the server at time of manufacture.
- D. The inventory of the server is analyzed.
- E. The server is assigned to the selected organization, if configured.

Answer: AB

NEW QUESTION 133

Refer to the exhibit

```
>>> from cli import *
>>> cli ("configure terminal ; interface ethernet 1/2")
' '
>>> r = cli ('where detail') ; print r
mode:
username:          guest
vdc:               ADMIN
routing-context vrf: default
>>>
```

which script ing tool do you use to create the script?

- A. Python-API
- B. Bach
- C. NX-API
- D. Broadcom shell

Answer: A

NEW QUESTION 136

You plan to configure a SAN boot from the iSCSI storage of a Cisco UCS system. Which statement about an iSCSivNIC is true?

- A. All iSCSI data traffic is carried over the vNIC after the boot.
- B. An iSCSivNIC is an iBFT configuration placeholder for the iSCSI boot configuratio
- C. The vNIC exists only during the startup phase.
- D. Only iSCSI control data traffic is carried over the vNIC after the boot.
- E. An iSCSivNIC is an iBFT configuration placeholder for the iSCSI boot proces
- F. The vNIC exists during and after the startup phase.

Answer: A

NEW QUESTION 140

You need to enable Cisco UCS Manager to support out-of-band IPv4 address access to the Cisco UCS KVM Direct launch page from a web browser. What should you enable?

- A. SMASH CLP
- B. CIM XML
- C. SNMP
- D. CIMC Web Service

Answer: D

Explanation: -Cisco UCS Manager supports out-of-band IPv4 address access to the Cisco UCS KVM Direct launch page from a web browser. To provide this access, you must enable the following service: CIMC Web Service

https://www.cisco.com/c/en/us/td/docs/unified_computing/ucs/sw/gui/config/guide/3-0/b_UCSM_GUI_User_G

NEW QUESTION 145

Refer to the exhibit.

```
interface ethernet 1/30
  switchport mode trunk
  switchport trunk allowed vlan 2002
  spanning-tree port type edge trunk

inf vfc 130
  switchport mode NP
  switchport trunk allowed vsan 2002
  bind interface eth 1/16
  no shutdown

vsan database
  vsan 2002 interface vfc 130
```

Interface Ethernet 1/30 connects to which type of switch?

- A. an FCoE switch that has NPV enabled
- B. a Fibre Channel switch that has NPV enabled
- C. a Fibre Channel switch that has NPIV enabled
- D. an FCoE switch that has NPIV enabled

Answer: D

Explanation: Reference: https://www.cisco.com/c/en/us/td/docs/switches/datacenter/nexus5000/sw/san_switching/503_n2_1/b_Cisco_n5

NEW QUESTION 148

Which two are true concerning the role-based access control specifics of a Cisco Unified Computing System? (Choose two.)

- A. Disabled local user accounts are deleted from the database.
- B. A locally authenticated user account is any user account that is authenticated through LDAP, RADIUS, or TACACS+.
- C. If a user maintains a local user account and a remote user account simultaneously, the roles that are defined in the local user account override those that are maintained in the remote user account.
- D. By default, user accounts expire after 90 days; a warning message will be generated 10 days prior to expiration.
- E. A user that is assigned one or more roles will be allowed the privileges that are consistent across all of the assigned roles.
- F. All roles include read access to all configuration settings in the Cisco Unified Computing System domain.

Answer: CF

NEW QUESTION 153

Which set of statements about the deployment options for Cisco UCS Central Software is true?

- A. Cisco UCS Central Software can be installed in a physical or a hypervisor environmen
- B. Only VMware and KVM hypervisor environments are supported.
- C. Cisco UCS Central Software can he installed in a physical or a hypervisor environmen
- D. VMware, Microsoft Hyper-V, and KVM hypervisor environments are supported.
- E. Cisco UCS Central Software can be installed only in a physical environment, due to extreme I/O and networking needs.
- F. Cisco UCS Central Software can be installed only in a VMware and Microsoft Hyper-V virtual environment.

Answer: A

Explanation: UCS Central can only be installed in a hypervisor, but may be installed in VMW are ESXi, Hyper-V, and KVM.

This isn't an option Reference:

https://www.cisco.com/c/en/us/td/docs/unified_computing/ucs/ucs-central/install-upgrade/1-3/b_Cisco_UCSC_I

NEW QUESTION 155

ACisco UCS Administrator is planning to complete a firmware upgrade using Auto install. Which two options are prerequisites to run Auto install? (Choose two.)

- A. minor fault fixing
- B. configuration backup
- C. service profiles unmounted from the blade servers
- D. time synchronization
- E. fault suppression started on the blade servers

Answer: AB

NEW QUESTION 157

Which two prerequisites are required to configure a SAN boot from the FCoE storage of a Cisco UCS system? (Choose two.)

- A. The Cisco UCS domain must be able to communicate with the SAN storage device that hosts the operating system image.
- B. A boot policy must he created that contains a local disk, and the LVM must be configured correctly.
- C. There must be IVR-enabled FCoEproxying between the Cisco UCS domain and the SAN storage device that hosts the operating system image.
- D. There must be a boot target LUN on the device where the operating system image is located.
- E. There must be a boot target RAID on the device where the operating system image is located.

Answer: CD

NEW QUESTION 161

You need to design and implement a Cisco UCS 5108 Blade Server Chassis system for a customer.

Which statement about how half-width blades and full-width blades can be used is true?

- A. Only two full-width blades can be installed in the top two slots, and four half-width blades can be installed in the bottom two slots.
- B. Only one full-width blade can be installed in the top slot, and six half-width blades can be installed in the bottom slots.
- C. Half-width blades and full-width blades can be combined in any order.
- D. Half-width blade types and full-width blade types cannot be combined.

Answer: C

Explanation: Mixed blade configurations Allows up to 8 half-width or 4 full-width blade servers, or any combination thereof, for outstanding flexibility.

When configured with the 6324 Fabric Interconnect, only 8 half-width B200 M3 blades are supported.

[https://www.cisco.com/c/en/us/td/docs/unified_computing/ucs/hw/chassis-install-guide/ucs5108_install/](https://www.cisco.com/c/en/us/td/docs/unified_computing/ucs/hw/chassis-install-guide/ucs5108_install/ucs5108_install_chapter_01.htm)

[ucs5108_install_chapter_01.htm](https://www.cisco.com/c/en/us/td/docs/unified_computing/ucs/hw/chassis-install-guide/ucs5108_install/ucs5108_install_chapter_01.htm)

NEW QUESTION 166

Open the windows by clicking on the minimized title at the bottom of the viewing area. Windows can be minimized by clicking on the [-], repositioned by dragging the title bar, and resized by using the handle at the lower right corner to customize the viewing area.

If you are required to access the devices to complete this scenario, the mouse cursor will use a hand symbol when moved over device icons. Click the icon to open a device terminal to interact with the hardware.

Open the Questions window and begin with clicking a question number. When you have completed answering all questions, click Done to continue.

Scenario

Use your UCS knowledge on Fabric Interconnect Failover to answer the questions associated with the UCS cluster.

Exhibit.

```
UCS-A# show cluster state
Cluster Id: 0xfc436fa8b88511e0-0xa370000573cb6c04

A: UP, PRIMARY
B: UP, SUBORDINATE

HA READY
UCS-A# connect local-mgmt
Cisco Nexus Operating System (NX-OS) Software
TAC support: http://www.cisco.com/tac
Copyright © 2002-2011, Cisco Systems, Inc. All rights reserved.
The copyrights to certain works contained in this software are owned by other
third parties and used and distributed under license. Certain components of
this software are licensed under the GNU General Public License (GPL) version
2.0 or the GNU Lesser General Public License (LGPL) version 2.1 A Copy of
each such license is available at
http://www.opwnsource.org/licenses/gpl-2.0.php and
http://www.opwnsource.org/licenses/gpl-2.1.php

UCS- A(local-mgmt) # cluster lead b
UCS- A(local-mgmt) #
```

The cluster lead b command represents:

- A. The cluster will go into a subordinate state.
- B. The cluster will switch fabric interconnect b from subordinate to lead or primary.
- C. The cluster will only use fabric interconnect to.
- D. The cluster will load balance traffic over Fabric Interconnects a and b.

Answer: B

NEW QUESTION 171

Which ports can access the Cisco IMC if you select Shared LOM NIC mode in the Cisco IMC Configuration Utility for a Cisco UCS C-Series server?

- A. The ports on an installed Cisco network adapter card
- B. The two 1-Gb Ethernet ports
- C. The two 10/100 management ports
- D. The two 10/100 management ports, but each port has a default setting

Answer: B

NEW QUESTION 173

Drag the characteristic on the left to the most appropriate Cisco Unified Computing System 62XX Fibre Channel switching mode on the right.

NP_Port to F_Port

No Fibre Channel domain ID

Default zoning or zone merge

No zoning required

N_Port to F_Port

Fibre Channel domain ID

NPV Mode

Fibre Channel Switching Mode

Answer:

Explanation:

Drag the characteristic on the left to the most appropriate Cisco Unified Computing System 62XX Fibre Channel switching mode on the right.

NP_Port to F_Port

No Fibre Channel domain ID

Default zoning or zone merge

No zoning required

N_Port to F_Port

Fibre Channel domain ID

NPV Mode

NP_Port to F_Port

No Fibre Channel domain ID

No zoning required

Fibre Channel Switching Mode

N_Port to F_Port

Fibre Channel domain ID

Default zoning or zone merge

NEW QUESTION 176

Which two statements describe the Cisco UCS Manager full state type of backup? (Choose two.)

- A. The file created can be used for an import.
- B. The file created cannot be used to restore the system during disaster recovery.
- C. The file created can only be used to restore a system that is running the same version as the system from which the backup file was exported.
- D. It creates an XML file.
- E. It creates binary file.

Answer: CE

NEW QUESTION 181

Open the windows by clicking on the minimized at the bottom of the viewing area. Windows can be minimized by clicking on the [X], repositioned by dragging the title bar, and resized by using the handle at the lower right corner to customize the viewing area.
If you are required to access the devices to complete this scenario, the mouse cursor will use a hand symbol when moved over device icons. Clicking the icon will open a device terminal so you can interact with the hardware.
Open the Questions window and begin by clicking a question number. When you have completed answering all questions, click Done to continue.
Scenario
Use your UCS knowledge on Adapter errorsconfigurations.

```
UCS-A# scope server 1/5
UCS-A/chassis/server # show adapter detail

Adapter:
Id:2
Product Name: Cisco UCS 82598KR-CI
PID: N20-AI002
VID: V01
Vendor: Cisco Systems Inc.
Serial: QCI132300CC
Revision: 0
Mfg Date: 2009-06-13TCO:00:00.000
Slot: N/A
Overall Status: Operable
Conn Path: A, B
Conn Status: Unknown
Managing Instance: B
Product Description: PCI Express Dual Port 10 Gigabit Ethernet Serv
UCS-A/chassis/server #
```

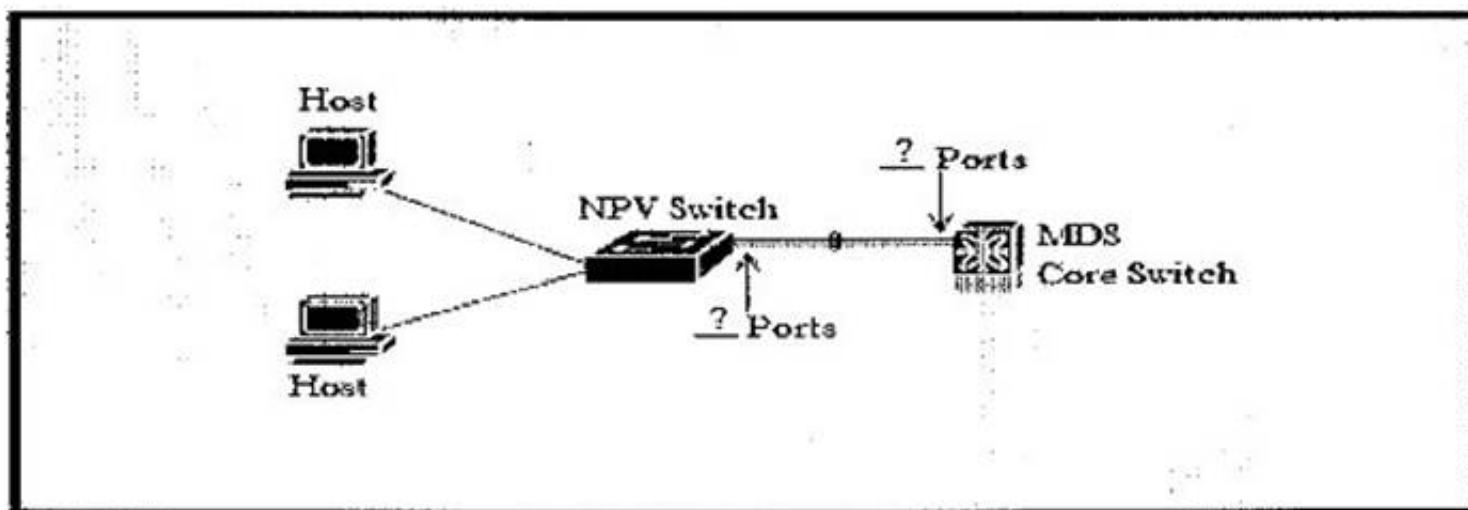
We are working on which server?

- A. 1
- B. 2
- C. 3
- D. 4
- E. 5

Answer: E

NEW QUESTION 182

View the Exhibit.



Refer to the exhibit. An engineer is implementing a new network design that includes a port channel to connect an MDS core switch and an NPV switch. Which two Fibre Channel port types must be used to create the Fibre Channel port channel? (Choose two.)

- A. F Port
- B. NP Port
- C. NL Port
- D. E Port
- E. N Port
- F. TL Port

Answer: AB

Explanation: Reference:

https://www.cisco.com/c/en/us/td/docs/switches/datacenter/mds9000/sw/4_1/configuration/guides/cli_4_1/cli_b0

NEW QUESTION 183

You must use a Cisco maintenance policy to create a deferred deployment that is independent of operating system actions. What must you include in the

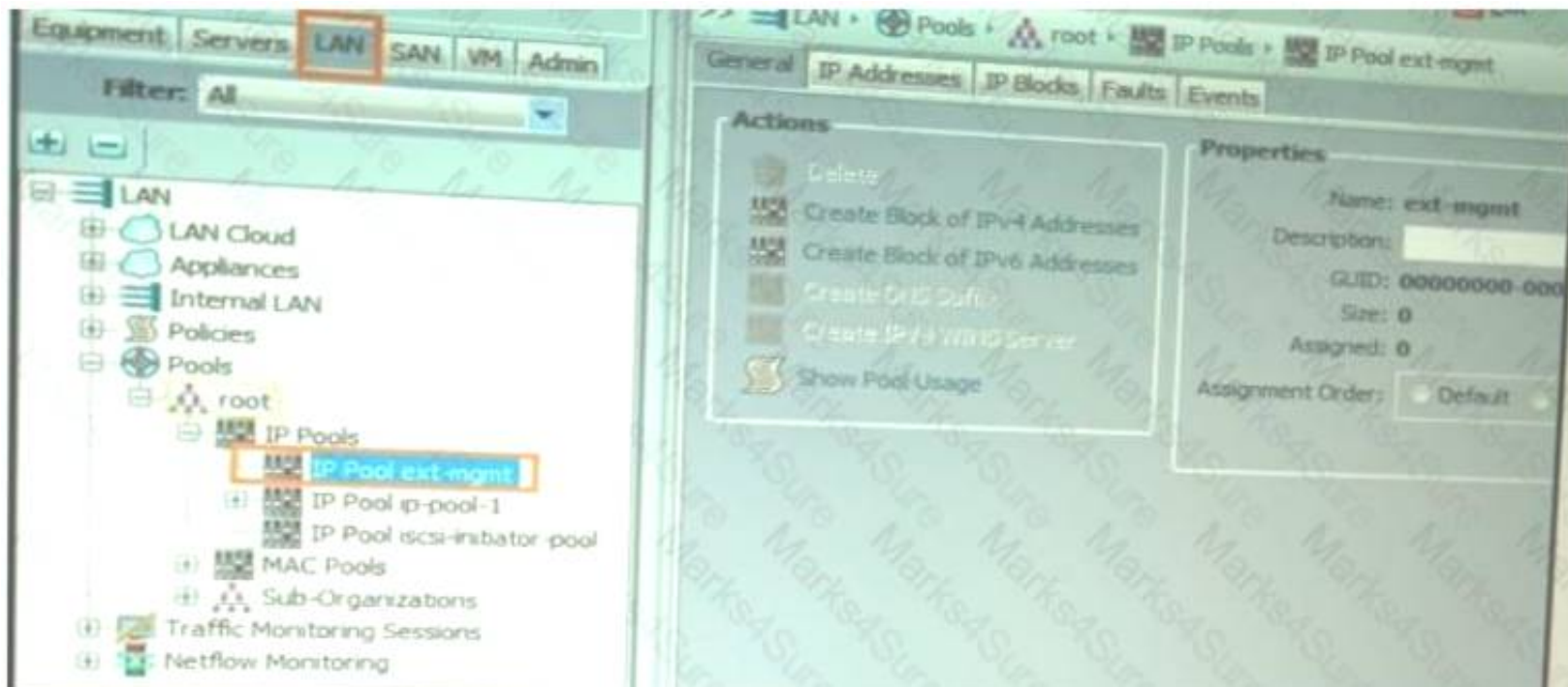
maintenance policy?

- A. description
- B. schedule
- C. BIOS policy
- D. reboot policy

Answer: D

NEW QUESTION 184

Refer to the Exhibit:



Refer to the exhibit. Which action do you take to ensure that the IP addresses in IP pool ext-mgmt are selected in a random order?

- A. Select the Default option in the Assignment Order property
- B. Delete all the IP pools except for IP pool ext-mgmt
- C. Add another block to IP pool ext-mgmt
- D. Select a pool size that is larger than 0

Answer: A

NEW QUESTION 186

You configure FCoE in a Cisco UCS system at a customer site. The configuration seems correct, but the customer complains that the system fails to perform as expected. FCoE VLAN discovery, FCF discovery and FLOGI processes work properly. The issue appears to be with the Fibre Channel commands and responses. What is a possible cause of the issue?

- A. The storage device is experiencing configuration or compatibility issues when the FIP process completes successfully.
- B. The routed Layer 3 network between the FCoE SAN and the storage device is experiencing issues when the FIP process fails to complete successfully.
- C. The FCoE configuration is experiencing errors because of issues with the Fibre Channel commands.
- D. The switched Layer 2 network between the FCoE SAN and the storage device is experiencing issues when the FIP process fails to complete successfully.

Answer: B

Explanation: Make sure that your native vlan is carried across all the trunk ports.

Reference:

<https://supportforums.cisco.com/t5/storage-networking/fip-and-native-vlan/td-p/2451783>

NEW QUESTION 191

Which boot method would you use to boot the OS of a server by using a storage device located on an IP network?

- A. CIMC secure boot
- B. local disk boot
- C. SAN boot
- D. iSCSI boot

Answer: D

Explanation: Reference:

https://www.cisco.com/c/en/us/td/docs/unified_computing/ucs/ucs-manager/GUI-User-Guides/Server-Mgmt/3-1

NEW QUESTION 192

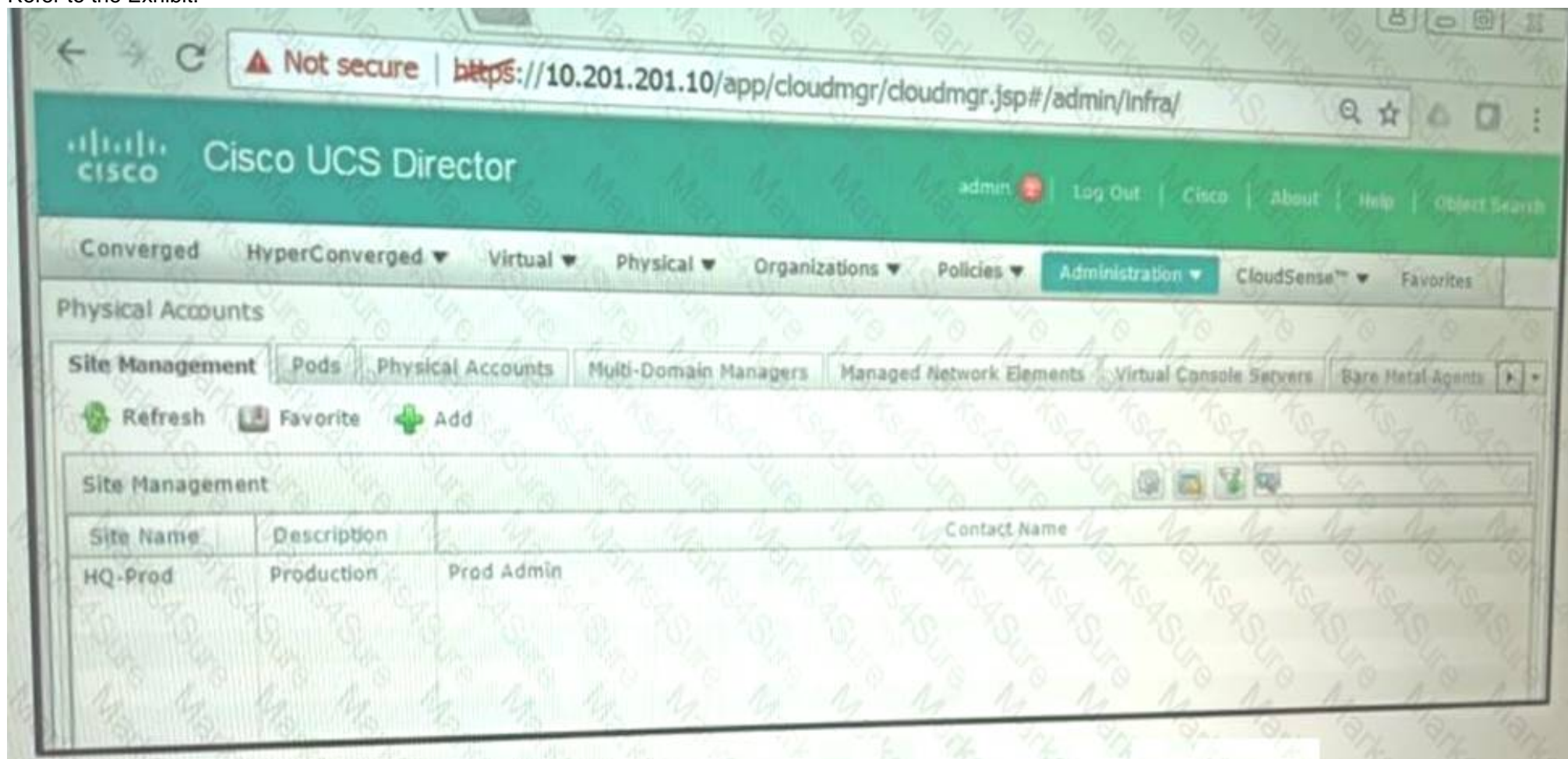
You must update your certificates after the name of a Cisco UCS Fabric Interconnect cluster changes. Which action do you take?

- A. Use the built-in default key ring certificate in Cisco UCS Manager.
- B. Regenerate the certificate manually.
- C. Request a new public-key certificate from the intermediate CA.
- D. Request a new root certificate from the root CA.

Answer: B

NEW QUESTION 194

Refer to the Exhibit:



You are integrating Cisco UCS Director with the ACI fabric. Where do you create the account type?

- A. Pods
- B. Managed Network Elements
- C. Multi-Domain Managers
- D. Bare Metal Agents

Answer: C

NEW QUESTION 198

An administrator is testing the Cisco Nexus 1000v switch on top of a Cisco UCS Blade. They realize that the test VM traffic is not marked correctly after it leaves the Cisco UCS B-series blade. What is the reason for seeing this behavior?

- A. The Cisco UCS does not support QoS marking
- B. The Cisco UCS QoS policy applied to the blade has the host control set to "none."
- C. The Cisco Nexus 1000V Series Switches do not support QoS marking.
- D. The Cisco Nexus 1000V Series Switch QoS marking has not been enabled with "feature gos."

Answer: B

Explanation: Whether UCS controls the CoS for a vNIC or not strictly depends on the Host Control Field of the QoS Policy, which is assigned to that particular vNIC.

If None is selected, then UCS assigns the CoS value associated with the Priority Class given in the QoS policy. It disregards any of the settings implemented at the host level by the Nexus 1000v.

If Full is selected and the packet has a valid CoS assigned by the Nexus 1000v, then UCS trusts the CoS settings assigned at the host level. Otherwise, Cisco UCS uses the CoS value associated with the priority selected in the Priority drop-down list.

The Milano QoS policy has a Host Control of Full, which means that the Gold Priority (CoS 6) is ignored and the Nexus 1000v setting is trusted.

The correct answer is "The Cisco UCS QoS policy applied to the blade has the host control set to "none." The other answers are not correct, or are not causes for the behavior.

Reference:

<https://www.cisco.com/c/en/us/support/docs/switches/nexus-1000v-switch/117541-configure-qos-00.html#anc6>

NEW QUESTION 201

Which two features in Cisco UCS Manager are required to configure Uplink Ethernet ports? (Choose two.)

- A. vNIC templates
- B. LAN Pin Groups
- C. VLAN groups
- D. adapter policies
- E. link profiles

Answer: AB

Explanation: Reference:

<https://www.cisco.com/c/en/us/support/docs/servers-unified-computing/ucs-6120xp-20-port-fabricinterconnect/1>

https://www.cisco.com/c/en/us/td/docs/unified_computing/ucs/sw/gui/config/guide/2-2/

b_UCSM_GUI_Configuration_Guide_2_2/using_the_lan_uplinks_manager.html

NEW QUESTION 204

Drag the upgradeable type of firmware on the left to the appropriate Cisco UCS component on the right.

NX-OS System

Backup

NX-OS Kernel

Startup

UCS Manager

62xx Fabric Interconnect

22xx IOM

Answer:

Explanation:

Drag the upgradeable type of firmware on the left to the appropriate Cisco UCS component on the right.

NX-OS System

Backup

NX-OS Kernel

Startup

UCS Manager

62xx Fabric Interconnect

NX-OS Kernel

NX-OS System

UCS Manager

22xx IOM

Startup

Backup

NEW QUESTION 205

Which addressing does Cisco UCS Manager use when communicating with Cisco UCS Central?

- A. IP addresses of the UCS Fabric Interconnects
- B. UCS CIMC
- C. VMware ESXi server
- D. IP address of the UCS KVM

Answer: A

NEW QUESTION 210

Which item describes the failure scenario called a "split-brain" in the Cisco Unified Computing System?

- A. Failure of the Cisco Unified Computing System L1-L2 network
- B. Failure of a Cisco Unified Computing System Chassis Management Controller
- C. Failure of a Cisco Unified Computing System I/O module
- D. Failure of a Cisco Unified Computing System Fabric Interconnect
- E. Failure of a Cisco Unified Computing System Chassis Management Switch

Answer: A

NEW QUESTION 213

Open the windows by clicking on the minimized at the bottom of the viewing area. Windows can be minimized by clicking on the [X], repositioned by dragging the title bar, and resized by using the handle at the lower right corner to customize the viewing area.
If you are required to access the devices to complete this scenario, the mouse cursor will use a hand symbol when moved over device icons. Clicking the icon will open a device terminal so you can interact with the hardware.

Open the Questions window and begin by clicking a question number. When you have completed answering all questions, click Done to continue.
Scenario

Use your UCS knowledge on Adapter errorsconfigurations.

```
UCS-A# scope server 1/5
UCS-A/chassis/server # show adapter detail

Adapter:
Id:2
Product Name: Cisco UCS 92598KR-CI
PID: N20-AI002
VID: V01
Vendor: Cisco Systems Inc.
Serial: QCI132300CC
Revision: 0
Mfg Date: 2009-06-13TCO:00:00.000
Slot: N/A
Overall Status: Operable
Conn Path: A, B
Conn Status: Unknown
Managing Instance: B
Product Description: PCI Express Dual Port 10 Gigabit Ethernet Serv
UCS-A/chassis/server #
```

Current adapter status is?

- A. Operable
- B. Down
- C. Inoperable
- D. Unknown

Answer: A

NEW QUESTION 218

Which statement is true regarding backup operations in Cisco UCS Manager?

- A. A user can perform incremental backups of a system configuration.
- B. Passwords and other sensitive information are encrypted in full state backups.
- C. Scheduled backups are not available.
- D. Each backup destination can have multiple backup operations.

Answer: B

NEW QUESTION 222

Which statement about the use of RBAC roles in a Cisco UCS system is true?

- A. RBAC roles define which features are enabled on a Cisco UCS system
- B. RBAC roles create groups of organizations
- C. RBAC roles create groups of local users
- D. RBAC roles define which features users can access.

Answer: D

NEW QUESTION 223

You need to install a Windows Server operating system that has MPIO enabled, to optimize connectivity with storage arrays.
What is a valid prerequisite to perform this task?

- A. iSCSI multipathing must be enabled on all of the vNICs and the physical adapters in the iSCSI initiator IP pools.
- B. iSCSI multipathing must be disabled during the installation and re-enabled after MPIO is enabled on the host.
- C. If there are multiple paths that are configured to the boot LUN, all of these paths must be enabled when the LUN is installed.
- D. If there are multiple paths that are configured to the boot LUN, only one path must be enabled when the LUN is installed.

Answer: D

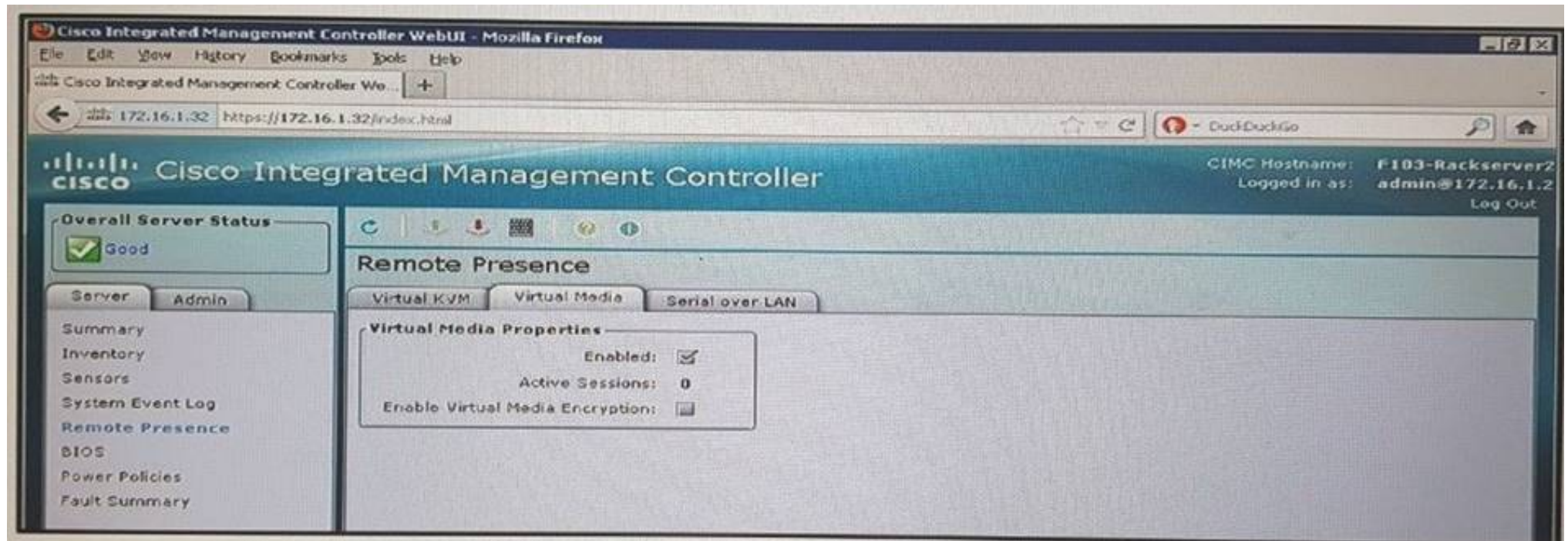
Explanation: If there are multiple paths configured to the boot LUN, only one path should be enabled when the LUN is installed

Reference:

https://www.cisco.com/c/en/us/td/docs/unified_computing/ucs/sw/gui/config/guide/2-2/b_UCSM_GUI_Configu

NEW QUESTION 228

Refer to the exhibit.



Which two media types can you mount from the KVM console? (Choose two.)

- A. ISO
- B. VHD
- C. VHDx
- D. IMG
- E. VMDK

Answer: AD

NEW QUESTION 231

You are creating service profiles for a Cisco UCS system by using the service profile wizard. You discover that you forgot to create the UUID pool. What should you do?

- A. From the wizard, click Create UUID Suffix Pool.
- B. Pause the running wizard, and then start a temporary wizard to create a profile with the same name and the missing UUID pool.
- C. Resume the wizard, and then select the new UUID pool.
- D. Continue running the wizard.
- E. The service profile uses the burned-in UUID in the BIOS of the server.
- F. Stop the wizard, and then restart the wizard.

Answer: A

Explanation: Step 4

(Optional) If you want to create a new UUID Suffix pool to use in this service profile, click Create UUID Suffix Pool and complete the fields in the Create UUID Suffix Pool wizard. For more information, see Creating a UUID Suffix Pool.

Reference:

https://www.cisco.com/en/US/docs/unified_computing/ucs/sw/gui/config/guide/141/UCSM_GUI_Configuration_Guide_141_chapter24.html

NEW QUESTION 232

You have a Cisco Nexus switch in NPV mode. Which technology do you use to enhance load balancing, capacity, and resiliency for the devices FLOGI'd into this switch?

- A. FabricPath
- B. F-port-channel-trunk
- C. Overlay vNIC
- D. FCoE

Answer: B

NEW QUESTION 236

You need to provision iSCSI initiator IP pools on a Cisco UCS system. How many iSCSIvNICs can you use per boot policy?

- A. 2
- B. 4
- C. 6
- D. 8

Answer: A

Explanation: You can add up to two iSCSIvNICs per boot policy. One vNIC acts as the primary iSCSI boot source, and the other acts as the secondary iSCSI

boot source.

Reference:

https://www.cisco.com/c/en/us/td/docs/unified_computing/ucs/sw/gui/config/guide/2-2/b_UCSM_GUI_Configu

NEW QUESTION 237

Which two protocols are accepted by the Cisco UCS Manager XML API? (Choose two.)

- A. SMASH
- B. HTTPS
- C. HTTP
- D. XMTP
- E. SNMP

Answer: BC

Explanation: The Cisco UCS Manager XML API is a programmatic interface to Cisco Unified Computing System (UCS). The API accepts XML documents through HTTP or HTTPS. Developers can use any programming language to generate XML documents that contain the API methods

Reference: https://www.cisco.com/c/en/us/td/docs/unified_computing/ucs/sw/api/b_ucs_api_book/b_ucs_api_book_chapter

NEW QUESTION 239

You are implementing RBAC in Cisco UCS Manager. Which two statements about a locale are true? (Choose two.)

- A. A locale without any organizations provides access to all organizations.
- B. Each locale defines one to four organizations.
- C. A user can be assigned to one or more locales.
- D. Each locale defines one or more roles to which the user is allowed access.
- E. There is a one-to-one relationship between a user and a locale.

Answer: CD

Explanation: Reference: https://www.cisco.com/en/US/docs/unified_computing/ucs/sw/cli/config/guide/1.4.1/CLI_Config_Guide_1_4_1

NEW QUESTION 243

Which scripting tool encodes a CLI in the body of an HTTP post method?

- A. Bash
- B. NX-API
- C. Broadcom Shell
- D. Python-API

Answer: B

NEW QUESTION 246

You are configuring HTTPS access to Cisco UCS Manager. You create a key ring, you issue a certificate request for the key ring, and you create the certificate request for the key ring. You discover that you still receive untrusted connection messages when connecting to Cisco UCS Manager from a Firefox browser and a Google Chrome browser.

What should you do to resolve the issue?

- A. Create a trusted point.
- B. Obtain a validated certificate from Cisco.
- C. Use only the Microsoft Internet Explorer browser.
- D. Sign the certificate by using Cisco UCS Manager.

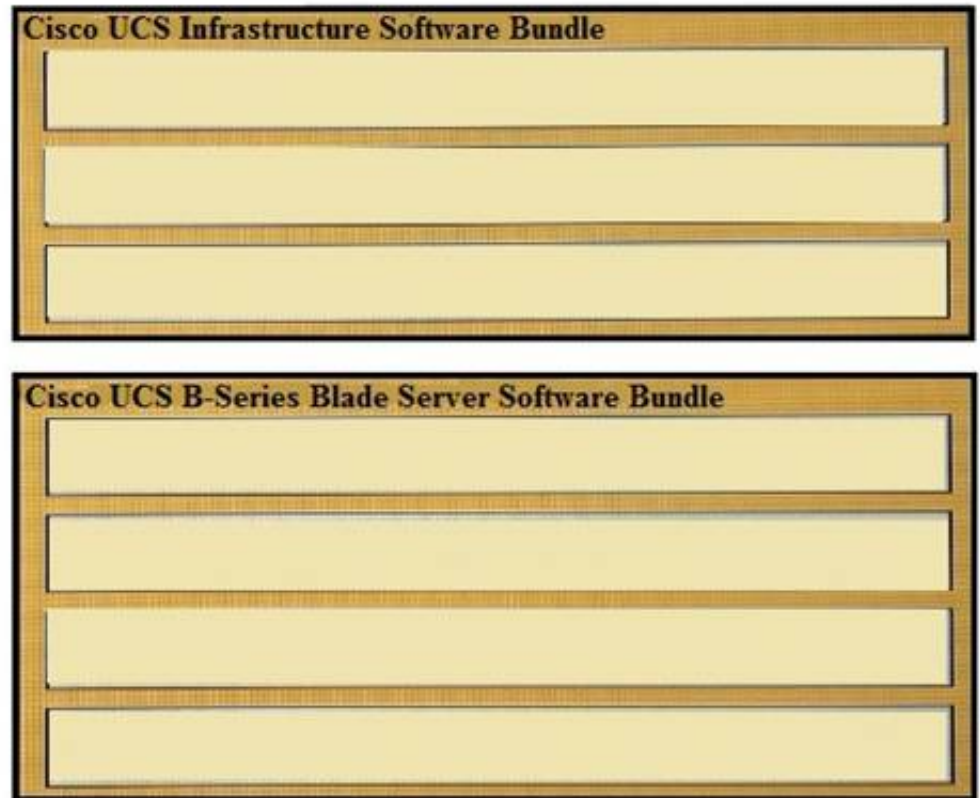
Answer: D

Explanation: Reference:

<https://www.derekseaman.com/2012/04/install-trusted-ssl-certificate-in.html>

NEW QUESTION 248

You need to upgrade the firmware on a Cisco UCS B-Series Blade Server system. Drag and drop the firmware packages on the left to the appropriate software bundle types on the right.



Answer:

Explanation: Cisco UCS Infrastructure Software Bundle
I/O module firmware
Kernel and system firmware for Fabric Interconnects
Cisco UCS Manager firmware
Cisco UCS B-series Blade Server Software Bundle
Board controller firmware
BIOS firmware CIMC firmware Third-party firmware

NEW QUESTION 250

You need to identify which DCB standard provides those functionalities negotiation capabilities for features, the distribution of parameters from one node to another, and logical link up and down signaling for both Ethernet and fibre Channel interfaces. Which DCB standard should you identify?

- A. ETS
- B. PFC
- C. DCBX
- D. QCN

Answer: C

Explanation: Reference:

<https://www.cisco.com/c/dam/en/us/solutions/collateral/data-center-virtualization/ieee-802-1-data-centerbridgin>
<https://www.cisco.com/c/dam/en/us/products/collateral/storage-networking/mds-9700-series-multilayerdirectors>

NEW QUESTION 251

When a configuration change requires a reboot, which policy specifies how Cisco UCS manager should proceed?

- A. host firmware policy
- B. local disk policy
- C. maintenance policy
- D. boot policy

Answer: C

Explanation: Use the Maintenance Policy to specify how Cisco UCS Manager should proceed for configuration changes that will have a service impact or require a server reboot. Values for the Maintenance Policy can be "immediate", "user- ack", or "timer automatic". The best practice is to not use the "default" policy, and instead to create and use Maintenance Policies for either "user- ack" or "timer automatic", and to always have these as elements of the Service Profile or Service Profile Template definition. http://www.cisco.com/c/en/us/products/collateral/servers-unified-computing/ucs-manager/whitepaper_c11-697337.html

NEW QUESTION 256

In an environment where multiple LDAP servers are used for user authentication, which Cisco UCS Manager feature must be configured?

- A. LDAP Locale
- B. Organization
- C. LDAP Provider Group
- D. Authentication Domain

Answer: D

Explanation: For implementations involving multiple LDAP databases, configure an LDAP instance. Reference:
https://www.cisco.com/c/en/us/td/docs/unified_computing/ucs/sw/sample_configurations/UCSM_1_4_LDAP_w
https://www.cisco.com/c/en/us/td/docs/unified_computing/ucs/ucs-manager/GUI-User-Guides/AdminManagem

NEW QUESTION 260

You are configuring service profiles for a Cisco UCS system. What are three types of logical resource pools? (Choose three.)

- A. UUID
- B. MAC
- C. VLAN
- D. WWN
- E. VXLAN
- F. FC

Answer: ABD

Explanation: Reference:

https://www.cisco.com/c/en/us/td/docs/unified_computing/ucs/sw/gui/config/guide/2-2/b_UCSM_GUI_Configu <https://www.safaribooksonline.com/library/view/ccna-data-center/9780133860429/ch15lev2sec3.html>

NEW QUESTION 263

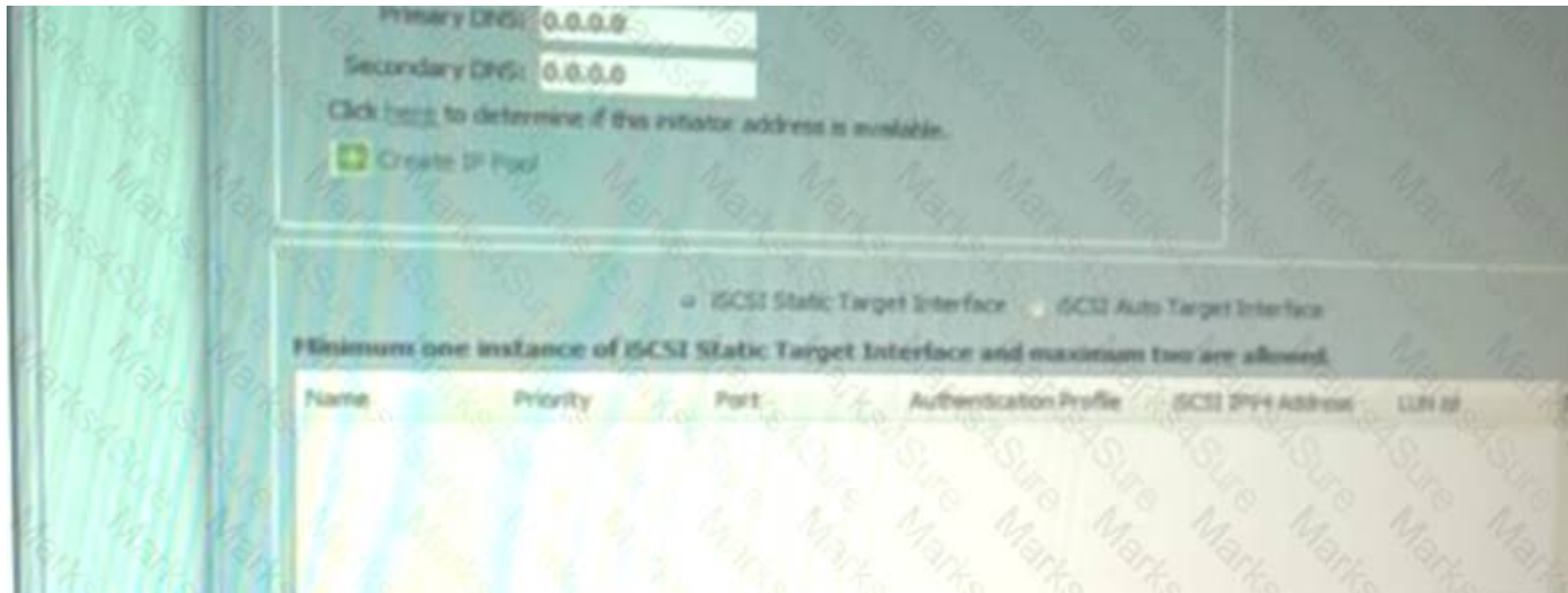
What is the Overlay Transport Virtualization site VLAN used for?

- A. to allow multiple site AEDs to communicate with each other
- B. to detect devices at the site that are not capable of OTV
- C. to facilitate communications between OTV edge devices within the site
- D. to allow the join interfaces at different sites to communicate

Answer: C

NEW QUESTION 265

Refer to the exhibit.



Which action do you take to complete the iSCSI boot implementation?

- A. Add a DNS server to resolve the IQN name.
- B. Create an IP pool.
- C. Add a default gateway.
- D. Add in iSCSI target.

Answer: D

NEW QUESTION 268

Which actions must be taken in order to connect a NetAppFCoE storage system to a Cisco UCS system?

- A. Ensure that the Fibre Channel switching mode is set to Switching, and use the Fibre Channel ports on the Fabric Interconnects.
- B. Ensure that the Fibre Channel switching mode is set to Switching, and reconfigure the port to aFCoE Storage port.
- C. Ensure that the Fibre Channel switching mode is set to End-Host, and use the Ethernet ports on the Fabric Interconnects.
- D. Ensure that the Fibre Channel switching mode is set to Switching, and use the Ethernet ports on the Fabric Interconnects.

Answer: A

Explanation: References:

<http://www.renar.net/?p=148&lang=en> https://www.cisco.com/c/en/us/td/docs/unified_computing/ucs/release/notes/UCS_28313.html

NEW QUESTION 271

Which two tasks can you perform from Cisco UCS Manager? (Choose two.)

- A. Configure or manage external storage on the SAN.
- B. Deploy an operating system.
- C. Configure San PIN groups
- D. Configure QoS classes and definitions.
- E. Restart an Oracle database.

Answer: CD

NEW QUESTION 275

Which two statements are true concerning authorization when using RBAC in a Cisco Unified Computing System? (Choose two.)

- A. A locale without any organizations, allows unrestricted access to system resources in all organizations
- B. The logical resources, pools and policies are groups into roles
- C. A role contains a set of privileges which define the operations that a user is allowed to take
- D. When a user has both local and remote accounts, the roles defined in the remote user account override those in the local user account
- E. Customized roles can be configured on and downloaded from remote AAA servers

Answer: AC

NEW QUESTION 277

Which Cisco UCS backup type results in an XML file that include all system and logical configuration settings?

- A. system configuration
- B. all configuration
- C. full state
- D. logical configuration

Answer: B

NEW QUESTION 280

When performing a backup through Cisco UCS Manager, which backup type must you to backup locally authenticated users?

- A. System configuration
- B. All configuration
- C. Full State
- D. Logical Configuration

Answer: A

Explanation: System configuration - An XML file that includes all system configuration settings such as usernames, roles, and locales. You can use the file generated from this backup to import these configuration settings to the original fabric interconnect or to a different fabric interconnect. You cannot use this file for a system restore.

Reference:

https://www.cisco.com/c/en/us/td/docs/unified_computing/ucs/sw/gui/config/guide/2-0/b_UCSM_GUI_Configu

NEW QUESTION 284

View the Exhibit.



Refer to the exhibit. Which two media types can you mount from the KVM console? (Choose two.)

- A. VHD
- B. ISO

- C. VMDK
- D. IMG
- E. VHDx

Answer: BD

Explanation: https://www.cisco.com/en/US/docs/unified_computing/ucs/sw/gui/config/guide/141/UCSM_GUI_Configuration_4
"Opens the Open dialog box that lets you navigate to the ISO or IMG file you want to the server to access."

NEW QUESTION 289

In order to manually boot from the FlexFlash SD card, which boot option must be in the boot policy used in the service profile?

- A. FlexFlash state
- B. remote virtual drive
- C. remote boot
- D. SD card

Answer: D

Explanation: Topic 2, Exam Set 1

NEW QUESTION 294

When implementing a Cisco UCS C-series standalone server, which of the following Cisco Integrated Management Controller NIC modes allow use of the least number of physical ports while providing maximum levels of redundancy?

- A. dedicated
- B. shared LOM
- C. shared LOM 10G
- D. Cisco VIC

Answer: D

NEW QUESTION 297

Which three items represent some of the components to implement Cisco VM-FEX for Cisco Unified Computing System Manager B-Series blades? (Choose three.)

- A. Cisco VSM VM
- B. VEM installed on the VMware vCenter server
- C. VEM in the VMware ESX or ESXi host
- D. Cisco Unified Computing System Manager version 1.2 or higher
- E. VMware vCenter server
- F. Fibre Channel VMFS volume

Answer: CDE

NEW QUESTION 298

Which of the following is true concerning the Global Chassis Discovery policy configuration on the Cisco Unified Computing System Manager when using Cisco Unified Computing System 22XX I/O modules with Cisco UCS 62XX Fabric Interconnects?

- A. The link grouping preference should be set to discrete mode when the number of northbound links are not a power of 2.
- B. Set the action policy-count higher than the actual number of uplinks; otherwise, the Cisco Unified Computing System servers will not be discovered.
- C. For Cisco Unified Computing System implementations that mix I/O modules with different numbers of links, it is best to manually reacknowledge the chassis in order to use all available links.
- D. Automatic reacknowledgement due to chassis discovery is never disruptive.

Answer: C

NEW QUESTION 302

Drag the characteristic on the left to the most appropriate Cisco Unified Computing System 62XX Fibre Channel switching mode on the right.

| | | |
|------------------------------|--|-------------------------------------|
| NP_Port to F_Port | | NPV Mode |
| No Fibre Channel domain ID | | |
| Default zoning or zone merge | | |
| No zoning required | | |
| N_Port to F_Port | | Fibre Channel Switching Mode |
| Fibre Channel domain ID | | |

Answer:

Explanation:

Drag the characteristic on the left to the most appropriate Cisco Unified Computing System 62XX Fibre Channel switching mode on the right.

| | | |
|------------------------------|--|-------------------------------------|
| NP_Port to F_Port | | NPV Mode |
| No Fibre Channel domain ID | | NP_Port to F_Port |
| Default zoning or zone merge | | No Fibre Channel domain ID |
| No zoning required | | No zoning required |
| N_Port to F_Port | | Fibre Channel Switching Mode |
| Fibre Channel domain ID | | N_Port to F_Port |
| | | Fibre Channel domain ID |
| | | Default zoning or zone merge |

NEW QUESTION 306

Which two elements are defined in a dynamic vNIC connection policy? (Choose two.)

- A. adapter policy
- B. QoS policy
- C. network control policy
- D. number of dynamic vNICs
- E. jumbo frame size

Answer: AD

NEW QUESTION 311

How many certificates does Cisco Unified Computing System Manager have to export to communicate with VMware vCenter server if the VMware ESXi hosts are all running version 5.0 or higher?

- A. 1
- B. 2
- C. 4
- D. 8
- E. 16

Answer: A

NEW QUESTION 312

Which NIC redundancy modes allow the LOMs to be discovered by the operating system or hypervisor?

- A. Dedicated mode
- B. Active/Active
- C. Active/Standby
- D. Cisco Card Mode

Answer: A

NEW QUESTION 313

Which of the following is the most accurate concerning the link configuration between Cisco Unified Computing System 22XX I/O modules and Cisco Unified Computing System 62XX Fabric Interconnects?

- A. Port channels are always recommended when using source-dest-mac load balancing.
- B. The addition of links to a port channel requires a reacknowledgement.
- C. You cannot mix and match discrete links and port channeling for different chassis when using 22XX.
- D. Port channels do not require a Global Chassis Discovery policy.

Answer: A

NEW QUESTION 318

Which two are true with respect to the unified ports on the Cisco Unified Computing System 62XX Fabric Interconnect? (Choose two.)

- A. The port mode is automatically discovered after plugging in a LAN or Fibre Channel-attached cable.
- B. By default, unified ports that are changed to Ethernet port mode are set to uplink Ethernet port type.
- C. Ethernet ports must be grouped together in a block and must start with the first port and end with an odd numbered port.
- D. After making Ethernet and Fibre Channel ports is supported on the expansion module.
- E. After making port mode changes on an expansion module, the module will reboot.
- F. In a standalone configuration, making port mode changes to the fixed module will not cause the fabric interconnect to reboot.

Answer: CE

NEW QUESTION 322

Instructions

Open the windows by clicking on the minimized title at the bottom of the viewing area. Windows can be minimized by clicking on the [X], repositioned by dragging the title bar, and resized by using the handle at the lower right corner to customize the viewing area.

If you are required to access the devices to complete this scenario, the mouse cursor will use a hand symbol when moved over device icons. Clicking the icon will open a device terminal so you can interact with the hardware.

Open the Questions window and begin by clicking a question number. When you have completed answering all questions, click Done to continue.

Scenario

Use your UCS knowledge on Adapter errors using the cli, answer the questions associated with the configurations.

Exhibit1

UCS-A# scope server 1/5
UCS-A /chassis/server # show adapter detail

Adapter:
 Id: 2
 Product Name: Cisco UCS 82598KR-CI
 PID: N20-AI0002
 VID: V01
 Vendor: Cisco Systems Inc
 Serial: QCI132300CG
 Revision: 0
 Mfg Date: 2009-06-13T00:00:00.000
 Slot: N/A
 Overall Status: Operable
 Conn Path: A,B
 Conn Status: Unknown
 Managing Instance: B
 Product Description: PCI Express Dual Port 10 Gigabit Ethernet Server Adapter
UCS-A /chassis/server #

1

2

3

4

Current Adapter Connected Status is?

☐ Operable

☐ Down

☐ Inoperable

☐ Unknown

Answer:

Explanation: Unknown

NEW QUESTION 323

What is true statement concerning port personalities on the Cisco Unified Computing System 62XX Fabric Interconnect?

- A. Fibre Channel uplink ports must operate in Fibre Channel switching mode.
- B. The fabric interconnects use native FCoE storage ports to directly attach to the SAN infrastructure.
- C. By default, all Fibre Channel ports are unconfigured.
- D. The Fibre Channel uplink ports do not support VSAN trunking and Fibre Channel port channels.
- E. The Fibre Channel storage ports support VSAN trunking and Fibre Channel port channels.

Answer: C

NEW QUESTION 326

Which ports can access the Cisco IMC if you select Shared LOM NIC mode in the Cisco IMC Configuration Utility for a Cisco UCS C-Series server?

- A. the ports on an installed Cisco network adapter card
- B. the two 1-Gb Ethernet ports
- C. the two 10/100 management ports
- D. the two 10/100 management ports, but each port has a default setting

Answer: B

NEW QUESTION 329

Which Cisco UCS firmware are contained in the Cisco UCS Infrastructure software bundle? (Choose three.)

- A. Cisco UCS BIOS
- B. Cisco UCS fabric interconnects firmware
- C. Cisco UCS adapters
- D. Cisco UCS Manager
- E. Cisco I/O module firmware
- F. Cisco IMC

Answer: BDE

NEW QUESTION 334

The Cisco UCS administrator has the chassis discovery policy set to "2-link". The administrator connects a new chassis to the Cisco UCS 6200 Series Fabric Interconnects using four links. Which option about link utilization is true?

- A. The Cisco UCS will use two links until the chassis is reacknowledged, after which it will use all four links.
- B. The Cisco UCS will use all four links for discovery.
- C. The Cisco UCS will use only two link
- D. The other two links are unusable.
- E. The Cisco UCS will use only two link
- F. However, the administrator can manually pin traffic to the extra links by using service profiles.

Answer: A

NEW QUESTION 337

Which option describes what Cisco Integrated Management Controller Network Security provides?

- A. protection against DDoS on the Cisco IMC
- B. a whitelist that specifies the servers allowed to access the Cisco IMC
- C. 802.1x support, allowing the Cisco IMC to log in to a port security network
- D. user-configured ACLs to block known bad servers from accessing the Cisco IMC

Answer: A

NEW QUESTION 340

Which three items represent message formats that are available to send fault data using Cisco Call Home? (Choose three.)

- A. short text
- B. long text
- C. HTML
- D. SOAP API
- E. XML
- F. Java

Answer: ABE

NEW QUESTION 344

This question concerns the replacement of a copper twinax SFP+ transceiver with an optical SFP+ transceiver on a Cisco Unified Computing System blade server.

Drag the options on the left to the right side in the correct order when performing the replacement. Note: Not all of the options on the left will be used.

| | |
|---|--|
| Insert the optical SFP+ transceiver into the I/O module port | |
| Remove the Cisco Unified Computing System 21xx I/O module from the chassis | |
| Remove the SFP+ cable, leaving the I/O module port empty | |
| Pull gently on the rubber loop of the copper twinax SFP+ from the I/O module port | |
| Plug the fiber-optic cable into the optical SFP+ transceiver | |

Answer:

Explanation:

This question concerns the replacement of a copper twinax SFP+ transceiver with an optical SFP+ transceiver on a Cisco Unified Computing System blade server.

Drag the options on the left to the right side in the correct order when performing the replacement. Note: Not all of the options on the left will be used.

| | |
|---|---|
| Insert the optical SFP+ transceiver into the I/O module port | Pull gently on the rubber loop of the copper twinax SFP+ from the I/O module port |
| Remove the Cisco Unified Computing System 21xx I/O module from the chassis | Insert the optical SFP+ transceiver into the I/O module port |
| Remove the SFP+ cable, leaving the I/O module port empty | Plug the fiber-optic cable into the optical SFP+ transceiver |
| Pull gently on the rubber loop of the copper twinax SFP+ from the I/O module port | |
| Plug the fiber-optic cable into the optical SFP+ transceiver | |

NEW QUESTION 346

Which two are true with respect to the upgrade process for the Cisco Unified Computing System? (Choose two.)

- A. For easier manageability, Cisco provides one full bundle that contains the firmware images for all Cisco Unified Computing System components.
- B. You can choose from FTP, TFTP, SCP, and HTTP to copy the bundle image from a remote file system.
- C. When the bundle image is downloaded, it must be transferred to the flash file system of the active fabric interconnect.
- D. When the download is successful, Cisco Unified Computing System Manager expands the individual files from the archive and installs them in the correct flash file system partition.
- E. It is strongly recommended that you activate all components in all chassis at one time.
- F. The I/O module, CIMC, and adaptors update process operates strictly on the backup partition of Flash for a given component.

Answer: CF

NEW QUESTION 349

This question concerns the installation of a Cisco Unified Computing System blade server I/O module.

Drag the options on the left to the right side in the correct order when performing the installation. Note: Not all of the steps on the left will be used.

| | |
|---|--|
| Slide the I/O module into the I/O module slot, ensuring that the I/O module is fully seated | |
| Connect the networking cables | |
| Make sure that the two levers at the front of the I/O module are pulled open | |
| Install the N20-CBLKI blank to avoid EMI issues | |
| Close the levers and tighten the captive screw on each lever | |

Answer:

Explanation:

This question concerns the installation of a Cisco Unified Computing System blade server I/O module.

Drag the options on the left to the right side in the correct order when performing the installation. Note: Not all of the steps on the left will be used.

| | |
|---|---|
| Slide the I/O module into the I/O module slot, ensuring that the I/O module is fully seated | Make sure that the two levers at the front of the I/O module are pulled open |
| Connect the networking cables | Slide the I/O module into the I/O module slot, ensuring that the I/O module is fully seated |
| Make sure that the two levers at the front of the I/O module are pulled open | Close the levers and tighten the captive screw on each lever |
| Install the N20-CBLKI blank to avoid EMI issues | Connect the networking cables |
| Close the levers and tighten the captive screw on each lever | |

NEW QUESTION 354

In the Create Dynamic vNIC Connection Policy dialog box, there is a configurable field titled Protection. What is the significance of the three choices for Protection?

- A. allows reserve vNICs to be allocated out of the spares pool
- B. enables hardware-based failover
- C. enables static binding of the VM port profile to dynamic vNICs
- D. selects the primary fabric association for dynamic vNICs
- E. allows dynamic vNICs to be reserved for fabric failover

Answer: D

NEW QUESTION 359

Which Cisco UCS Manager feature allows you to specify multiple LDAP servers for user authentication?

- A. Realm
- B. LDAP Provider Group
- C. Authentication Domain
- D. Organization

Answer: C

NEW QUESTION 360

Which BIOS setting is required for a VMware ESXi 5.0 host to support Cisco VM-FEX universal passthrough mode?

- A. VT for Directed IO
- B. ACPI 10 Support
- C. VEMDPA Agent
- D. Execute Disabled Bit

E. Processor C State

Answer: A

NEW QUESTION 361

When you create a vHBA, what will you achieve by enabling persistent binding?

- A. This feature allows the binding of the SCSI targets to the vHBA, even across reboots.
- B. This feature allows the binding of the same WWPN from the pool to the vHBA, even across reboots.
- C. This feature allows the binding of the same WWNN from the pool to the vHBA, even across reboots.
- D. This feature allows the binding of the Fibre Channel uplink to the vHBA, even across reboots.

Answer: A

NEW QUESTION 363

What is the maximum number of ports on a VMware vCenter Distributed Virtual Switch?

- A. 64
- B. 128
- C. 1024
- D. 4096
- E. 8192

Answer: D

NEW QUESTION 365

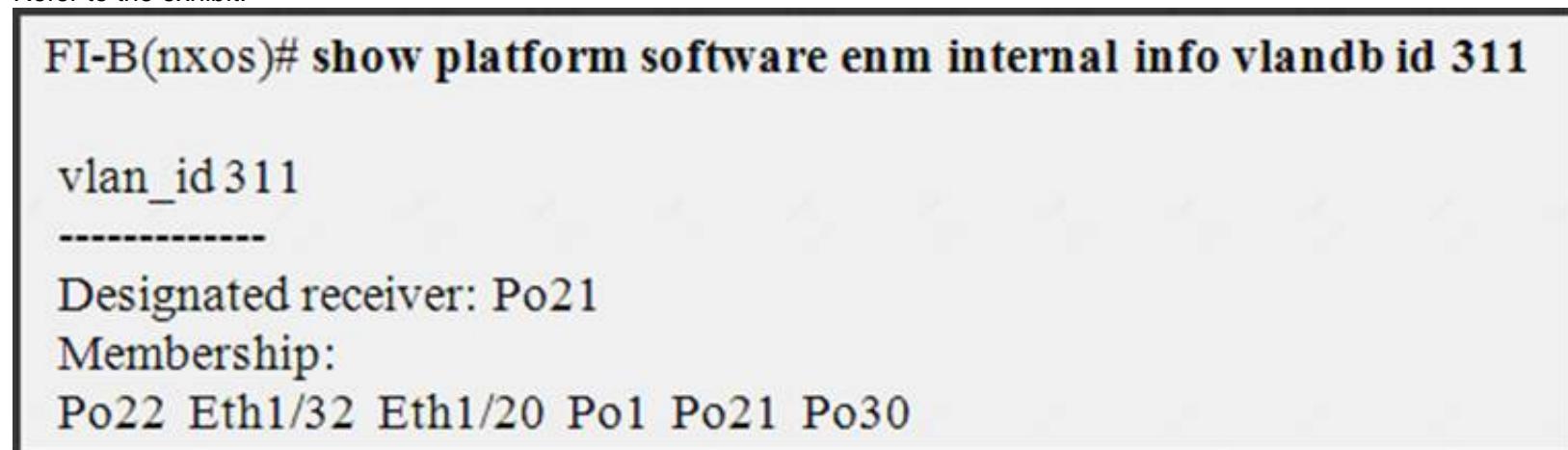
What is the purpose of the maximum ports that are filed in the port profile?

- A. determines the maximum number of uplinks that VMs can use
- B. determines the maximum number of VMs that can use the DVS
- C. determines the maximum number of DVSs that can use the port profile
- D. determines the maximum number of dynamic vNICS on the DVS

Answer: D

NEW QUESTION 370

Refer to the exhibit.



Which two statements about the fabric interconnect are true? (Choose two.)

- A. The fabric interconnect forwards all broadcast packets on VLAN 311 out of each interface listed in the Membership.
- B. The fabric interconnect forwards broadcasts on VLAN 311 only when they are received on Po21.
- C. Without any changes to the switch, eth 1/32 could become the designated receiver for VLAN 311.
- D. All multicast traffic from a blade on VLAN 311 goes out of Po21.
- E. IGMP join packets from blades on VLAN 311 goes out Po21.

Answer: BE

NEW QUESTION 372

How does a Cisco Unified Computing System react when configured for disjoint Layer 2 domains?

- A. Automatic pinning is disabled; VLAN membership must be statically pinned to the uplink ports.
- B. VLANs must be divided between the fabric interconnects using PIN groups.
- C. The VLAN traffic for a disjoint network can only travel along an uplink that is specifically assigned to this VLAN and is selectively excluded from all other uplinks.
- D. When you configure disjoint Layer 2 networks, you must assign VLANs to uplink interfaces.

Answer: C

NEW QUESTION 376

How many links are there between a second-generation IOM (Cisco UCS 2204 or 2208) and a third-generation half-width blade (Cisco UCS B200 M3 or B22 M3) in a Cisco UCS system?

- A. 1
- B. 2

- C. 4
- D. 8

Answer: C

NEW QUESTION 377

Which item is required for communication between Cisco Unified Computing System Manager and VMware vCenter?

- A. VeriSign Digital Certificates
- B. RSADigital Certificates
- C. Cisco Unified Computing System Manager Extension Key
- D. VeriSign Plug-In
- E. WMwarevCenter Certificate Services

Answer: C

NEW QUESTION 378

Which policy is used to update adapter firmware?

- A. adapter policy
- B. host firmware policy
- C. management firmware policy
- D. network control policy

Answer: B

NEW QUESTION 381

In which situation would you be required to change a Cisco UCS system from end-host mode to switching mode?

- A. Design requirements call for the use of fabric failover.
- B. Fabric interconnect is connecting to disjoint Layer 2 networks upstream.
- C. HSRP routers are directly connected to the fabric interconnect.
- D. Upstream Cisco Nexus 5000 is configured for vPC.

Answer: C

NEW QUESTION 384

When adding a VMware ESXi host to the Distributed Virtual Switch, what are two risks of migrating a VMNIC that is associated to vSwitch 0? (Choose two.)

- A. loss of access to the management IP interface
- B. duplicate IP address error
- C. duplicate MAC address error
- D. loss of VMware ESXi communication with VMware vCenter
- E. DVS port group will not appear in the VM network settings
- F. DVS port group will overwrite the port groups in vSwitch 0

Answer: AD

NEW QUESTION 385

Which of the following scenarios accurately demonstrate how the Cisco Unified Computing System ensures that a firmware upgrade is minimally disruptive to the data center unified fabric?

- A. If an I/O module is upgraded to a version that is incompatible with its fabric interconnect, the fabric interconnect can automatically reactivate the I/O module to a compatible version.
- B. If components like server BIOS, HBA, and RAID controller firmware are unsuccessfully updated through direct firmware updates, the update process will fall back to a host firmware package that is associated with the service profile.
- C. If an update of the subordinate fabric interconnect leaves it in a nonusable state, the primary fabric interconnect will automatically be updated to ensure that one fabric interconnect is running the most recent firmware.
- D. After Cisco Unified Computing System Manager upgrades the subordinate node, only then is the active management node automatically synchronized.

Answer: A

NEW QUESTION 387

Which of the following is not a feature of the Cisco Unified Computing System VIC-1280 adaptor?

- A. capable of up to 256 virtual interfaces
- B. supports FCoE
- C. supports Cisco VM-FEX
- D. compatible with the C- or B-Series Cisco Unified Computing System servers

Answer: D

NEW QUESTION 388

Which three options are true regarding port profiles in Cisco UCS Manager? (Choose three.)

- A. Port profiles define operating-system kernel parameters.
- B. Port profiles are represented as a port group in vCenter.
- C. Port profiles can be used by more than one DVS.
- D. Port profile parameters are visible on vCenter.
- E. Port profile parameters can be modified from vCenter.
- F. Port profiles can be modified only from Cisco UCS Manager.

Answer: BCF

NEW QUESTION 392

After staging a VEM file on a VMware ESXi 5.0 host in the /tmp directory, what is the correct command syntax to install the VEM?

- A. esxcli software vib install -d /tmp/VEM500-20110825132140-BG-release.zip-maintenance-mode
- B. esxcli software vib install -v /tmp/VEM500-20110825132140-BG-release.zip-maintenance-mode
- C. esxupdate software vib install -d /tmp/VEM500-20110825132140-BG-release.zip-maintenance-mode
- D. esxupdate software vib install -v /tmp/VEM500-20110825132140-BG-release.vib-maintenance-mode

Answer: A

NEW QUESTION 395

Which three statements about default settings for fabric interconnect uplink ports are true? (Choose three.)

- A. When a VLAN is configured, it is trunked on all uplinks.
- B. Specific VLANs are trunked on specific uplinks.
- C. UDLD is enabled.
- D. UDLD is disabled.
- E. Cisco Discovery Protocol is enabled.
- F. Cisco Discovery Protocol is disabled.
- G. They connect to the I/O modules.

Answer: ADE

NEW QUESTION 400

Which three items represent some of the features that can be defined in a Cisco Unified Computing System Manager port profile? (Choose three.)

- A. QoS policy
- B. ACL
- C. NetFlow
- D. port security
- E. network control policy
- F. VLAN or VLANs

Answer: AEF

NEW QUESTION 405

Instructions

Open the windows by clicking on the minimized title at the bottom of the viewing area. Windows can be minimized by clicking on the [-], repositioned by dragging the title bar, and resized by using the handle at the lower right corner to customize the viewing area.

If you are required to access the devices to complete this scenario, the mouse cursor will use a hand symbol when moved over device icons. Click the icon to open a device terminal to interact with the hardware.

Open the **Questions** window and begin by clicking a question number. When you have completed answering all questions, click **Done** to continue.

Scenario

Use your UCS knowledge on Fabric Interconnect Failover to answer the questions associated with the UCS cluster.

Exhibit1

```
UCS-A# show cluster state
Cluster Id: 0xfc436fa8b88511e0-0xa370000573cb6c04

A: UP, PRIMARY
B: UP, SUBORDINATE

HA READY
UCS-A# connect local-mgmt
Cisco Nexus Operating System (NX-OS) Software
TAC support: http://www.cisco.com/tac
Copyright (c) 2002-2011, Cisco Systems, Inc. All rights reserved.
The copyrights to certain works contained in this software are
owned by other third parties and used and distributed under
license. Certain components of this software are licensed under
the GNU General Public License (GPL) version 2.0 or the GNU
Lesser General Public License (LGPL) Version 2.1. A copy of each
such license is available at
http://www.opensource.org/licenses/gpl-2.0.php and
http://www.opensource.org/licenses/lgpl-2.1.php

UCS-A(local-mgmt)# cluster lead b
UCS-A(local-mgmt)#
```

Questions

- 1 The Cluster lead b command represents
- 2 ☐ The cluster will go into a subordinate state.
- 3 ☐ The cluster will switch fabric interconnect b from subordinate to lead or primary.
- ☐ The cluster will only use fabric interconnect b.
- ☐ The cluster will load balance traffic over Fabric Interconnects a and b.

Answer:

Explanation: The cluster will switch fabric interconnect b from subordinate to lead or primary.

NEW QUESTION 408

What is a true statement concerning automatic Fibre Channel pinning on a Cisco Unified Computing System 62XX Fabric Interconnect?

- A. By default, uplink Fibre Channel interfaces are configured for VSAN trunking.
- B. Using NPV, each downstream server will be pinned to an uplink port that is based on a PIN group.
- C. The Fibre Channel pinning process is implemented differently than end-host MAC address pinning.
- D. With VSAN trunking, the automatic pinning of server traffic to Fibre Channel uplink ports will be based on the server WWN.

Answer: D

NEW QUESTION 409

Which backup option must be used for a system restore?

- A. full state
- B. all configuration
- C. system configuration
- D. logical configuration
- E. incremental

Answer: A

NEW QUESTION 412

Instructions

Open the windows by clicking on the minimized title at the bottom of the viewing area. Windows can be minimized by clicking on the [-], repositioned by dragging the title bar, and resized by using the handle at the lower right corner to customize the viewing area.

If you are required to access the devices to complete this scenario, the mouse cursor will use a hand symbol when moved over device icons. Click the icon to open a device terminal to interact with the hardware.

Open the **Questions** window and begin by clicking a question number. When you have completed answering all questions, click **Done** to continue.

Scenario

Use your UCS knowledge on Fabric Interconnect Failover to answer the questions associated with the UCS cluster.

Exhibit1

```

UCS-A# show cluster state
Cluster Id: 0xfc436fa8b88511e0-0xa370000573cb6c04

A: UP, PRIMARY
B: UP, SUBORDINATE

HA READY
UCS-A# connect local-mgmt
Cisco Nexus Operating System (NX-OS) Software
TAC support: http://www.cisco.com/tac
Copyright (c) 2002-2011, Cisco Systems, Inc. All rights reserved.
The copyrights to certain works contained in this software are
owned by other third parties and used and distributed under
license. Certain components of this software are licensed under
the GNU General Public License (GPL) version 2.0 or the GNU
Lesser General Public License (LGPL) Version 2.1. A copy of each
such license is available at
http://www.opensource.org/licenses/gpl-2.0.php and
http://www.opensource.org/licenses/lgpl-2.1.php

UCS-A(local-mgmt)# cluster lead b
UCS-A(local-mgmt)#

```


Questions

- 1 The connect local-mgmt command is required
- 2 ☐ to allow the fabric interconnect to use the force command to be subordinate.
- 3 ☐ To allow local management of the cluster to be configured.
- ☐ To configure HA on all fabric interconnect .
- ☐ To enable the fabric interconnect for a different HA state.

Answer:

Explanation: to allow local management of the cluster to be configured.

NEW QUESTION 415

When cabling a Cisco UCS 6200 Series Fabric Interconnect to disjoint Layer 2 networks, which option must be considered?

- A. The fabric interconnect must be in switching mode.
- B. You must first configure a LAN pin group.
- C. Each VLAN is allowed across multiple disjoint uplinks.
- D. Each vNIC can communicate to a single disjoint network.

Answer: D

NEW QUESTION 418

What are the default settings of the Cisco IMCCIMC NIC properties on a standalone Cisco UCS C-Series server?

- A. 'Shared LOM' NIC mode with 'Active-active' NIC redundancy and DHCP enabled
- B. 'Shared LOM' NIC mode with 'Active-standby' NIC redundancy and DHCP enabled
- C. 'Dedicated' NIC mode with 'Active-standby' NIC redundancy DHCP disabled
- D. 'Dedicated' NIC mode with 'None' NIC redundancy and DHCP enabled
- E. 'Cisco Card' NIC mode with 'Active-active' NIC redundancy and DHCP enabled

Answer: D

NEW QUESTION 422

The Cisco Integrated Management Controller on a Cisco Unified Computing System B-Series server provides a number of features. Drag the functionality on the left to the appropriate feature on the right.

Allows an external UDP connection to the serial console port

Allows Cisco Unified Computing System administrators to connect remotely to the console of any server

Remotely powers a server on or off

IPMI

SOL

KVM

Answer:

Explanation:

The Cisco Integrated Management Controller on a Cisco Unified Computing System B-Series server provides a number of features. Drag the functionality on the left to the appropriate feature on the right.

| | |
|---|---|
| Allows an external UDP connection to the serial console port | IPMI |
| Allows Cisco Unified Computing System administrators to connect remotely to the console of any server | Remotely powers a server on or off |
| Remotely powers a server on or off | SOL |
| | Allows an external UDP connection to the serial console port |
| | KVM |
| | Allows Cisco Unified Computing System administrators to connect remotely to the console of any server |

NEW QUESTION 425

This question concerns the installation of a Cisco Unified Computing System blade server hard drive.

Drag the options on the left to the right side in the correct order when performing the installation. Note: Not all of the steps on the left will be used.

| | |
|--|--|
| Push the hard drive lever into the closed position | |
| Remove the blade server from the chassis | |
| Place the hard drive lever into the open position by pushing the release button | |
| Uncover with hard drive cover plates | |
| Gently slide the hard drive into the opening in the blade server until it seats into place | |

Answer:

Explanation:

This question concerns the installation of a Cisco Unified Computing System blade server hard drive.

Drag the options on the left to the right side in the correct order when performing the installation. Note: Not all of the steps on the left will be used.

| | |
|--|--|
| Push the hard drive lever into the closed position | Place the hard drive lever into the open position by pushing the release button |
| Remove the blade server from the chassis | Gently slide the hard drive into the opening in the blade server until it seats into place |
| Place the hard drive lever into the open position by pushing the release button | Push the hard drive lever into the closed position |
| Uncover with hard drive cover plates | |
| Gently slide the hard drive into the opening in the blade server until it seats into place | |

NEW QUESTION 426

The Cisco UCS 6200 Series Fabric Interconnects offer a new feature that allows dynamic port allocation for all of the 10 Gigabit Ethernet interfaces. What are these ports called?

- A. universal ports
- B. Flex ports

- C. unified ports
- D. converged ports

Answer: C

NEW QUESTION 430

Instructions

Open the windows by clicking on the minimized title at the bottom of the viewing area. Windows can be minimized by clicking on the [X], repositioned by dragging the title bar, and resized by using the handle at the lower right corner to customize the viewing area.

If you are required to access the devices to complete this scenario, the mouse cursor will use a hand symbol when moved over device icons. Clicking the icon will open a device terminal so you can interact with the hardware.

Open the Questions window and begin by clicking a question number. When you have completed answering all questions, click Done to continue.

Scenario

Use your UCS knowledge on Adapter errors using the cli, answer the questions associated with the configurations.

Exhibit1

```
UCS-A# scope server 1/5
UCS-A /chassis/server # show adapter detail

Adapter:
  Id: 2
  Product Name: Cisco UCS 82598KR-CI
  PID: N20-AI0002
  VID: V01
  Vendor: Cisco Systems Inc
  Serial: QCI132300CG
  Revision: 0
  Mfg Date: 2009-06-13T00:00:00.000
  Slot: N/A
  Overall Status: Operable
  Conn Path: A,B
  Conn Status: Unknown
  Managing Instance: B
  Product Description: PCI Express Dual Port 10 Gigabit Ethernet Server Adapter
UCS-A /chassis/server #
```

Questions

1

Current Adapter Status is ?

2

☐ Operable

3

☐ Down

4

☐ Inoperable

☐ Unknown

Answer:

Explanation: Operable

NEW QUESTION 435

Which two options are valid modes for VM-FEX in a Cisco UCS Manager port profile? (Choose two.)

- A. transparent
- B. bypass
- C. standard
- D. advanced
- E. high-performance
- F. low-pass

Answer: CE

NEW QUESTION 436

When upgrading a standalone Cisco UCS C-Series server, which method is correct?

- A. direct upgrade on all components
- B. Cisco Hardware Upgrade Utility
- C. Cisco Host Upgrade Utility
- D. Cisco Server Upgrade Utility

Answer: C

NEW QUESTION 440

Which two of the listed BIOS options are required for VM-FEX in high performance mode? (Choose two.)

- A. RSS
- B. interrupt coherency
- C. virtualization technology
- D. cache validation
- E. ATS support

Answer: CE

NEW QUESTION 444

Which network driver is required on a VMware ESXi 5.0 host for a vNIC to enter Cisco VM-FEX universal passthrough mode?

- A. VMXNET3
- B. Vlance
- C. Flexible
- D. E1000e
- E. VMXNET5

Answer: A

NEW QUESTION 445

You have a Cisco UCS B200 M2 server configured with 12 4-GBDDR3 1333-MHz dual-voltage memory DIMMs. You learned that the server memory speed is running at 1066 MHz instead. How can you configure the server to run at maximum memory speed?

- A. You cannot configure memory speed of 1333 MH
- B. The maximum memory speed of a Cisco UCS B200 M2 server with 12 4-GBDIMM is 1066 MHz.
- C. Memory speed of the ESX host is configurable on VMware vCenter.
- D. Create a BIOS polic
- E. In the RAS Memory BIOS settings, select Performance Mode for LV DDR Mode.
- F. On the CIMC of the Cisco UCS B200 M2, select 1333 MHz in the Memory Speed option.

Answer: C

NEW QUESTION 449

Which virtual hardware version is required for a VM to enter the Cisco VM-FEX universal passthrough mode?

- A. Version 5
- B. Version 6
- C. Version 7
- D. Version 8
- E. Version 9

Answer: D

NEW QUESTION 450

Which item describes the failure scenario called a "split-brain" in the Cisco Unified Computing System?

- A. failure of the Cisco Unified Computing System L1-L2 network
- B. failure of a Cisco Unified Computing System Chassis Management Controller
- C. failure of a Cisco Unified Computing System I/O module
- D. failure of a Cisco Unified Computing System Fabric Interconnect
- E. failure of a Cisco Unified Computing System Chassis Management Switch

Answer: A

NEW QUESTION 455

Which three items must be configured in the Port Profile Client in Cisco Unified Computing System Manager? (Choose three.)

- A. port profile
- B. DVS
- C. data center
- D. folder
- E. VMware vCenter IP address
- F. VM port group

Answer: BCD

NEW QUESTION 460

Which feature must be configured for Linux VMs to be able to transition from Cisco VM-FEX standard mode to universal passthrough mode?

- A. RSS

- B. MSI Interrupt Mode
- C. VEMDPA Agent
- D. Execute Disabled Bit
- E. Processor C State

Answer: B

NEW QUESTION 461

Which adapter is capable of supporting VM-FEX?

- A. VIC 1280
- B. Cisco UCS M61KR-I
- C. Cisco UCS M72KR
- D. Cisco UCS M51KR-B

Answer: A

Explanation: Topic 3, Exam Set 2

NEW QUESTION 466

Which three AAA protocols are supported for communication with external AAA providers? (Choose three.)

- A. TACACS+
- B. RADIUS
- C. AD
- D. LDAP
- E. ACS
- F. 802.1X

Answer: ABD

Explanation: Cisco UCS supports two methods to authenticate user logins: Through user accounts local to Cisco UCS Manager Remotely through one of the following protocols:

LDAP RADIUS TACACS+

Reference: https://www.cisco.com/en/US/docs/unified_computing/ucs/sw/gui/config/guide/141/UCSM_GUI_Configuration

NEW QUESTION 470

Which slot(s) contain DIMMs in a 1DPC configuration on Cisco UCS blade server?

- A. 1 and 2 only.
- B. 1
- C. 2

Answer: C

Explanation: Reference:

http://www.cisco.com/c/en/us/td/docs/unified_computing/ucs/hw/bladeservers/install/B200.html

NEW QUESTION 473

Which four Cisco UCS components use the Cisco NX-OS syslog services to generate syslog entries for system information and alerts? (Choose four.)

- A. I/O module
- B. fabric interconnect
- C. chassis
- D. Cisco Integrated Management Controller
- E. Cisco UCS Manager
- F. adapter
- G. Ethernet uplink
- H. storage module

Answer: ADEF

NEW QUESTION 478

Which two descriptions of a WWN pool are true? (Choose two.)

- A. a collection of WWNs for use by the iSCSI interfaces in a Cisco UCS instance
- B. a collection of Ethernet MAC addresses assigned to the Ethernet adapters in a Cisco UCS instance
- C. a pool of WW port names, where WWPN is the port name assigned to the Fibre Channel port on the adapter
- D. a collection of management IP addresses used to connect to servers
- E. a pool of WW node names, where WWNN belongs to the node

Answer: CE

Explanation: Reference:

http://www.cisco.com/c/en/us/td/docs/unified_computing/ucs/sw/gui/config/guide/1-31/b_UCSM_GUI_Configu

NEW QUESTION 483

An admin wants to make sure that for each VLAN added to a vNIC, a static MAC address entry is added to the fabric interconnect. Which setting within Cisco UCS Manager accomplishes this task?

- A. The MAC Register Mode in the network control policy is set to Only Native VLAN.
- B. The MAC Register Mode in the LAN connectivity policy is set to All Host VLANs.
- C. The MAC Register Mode in the network control policy is set to All Host VLANs.
- D. The MAC Register Mode in the LAN connectivity policy is set to Only Native VLAN.
- E. The MAC Register Mode in the link protocol policy is set to All Host VLANs.
- F. The MAC Register Mode in the link protocol policy is set to Only Native VLAN.

Answer: C

NEW QUESTION 487

Which consideration must be made while utilizing the UEFI boot mode?

- A. Legacy boot modes cannot be used on the same server.
- B. This mode applies only to models before the M3.
- C. The service profile cannot be disassociated without decommissioning the blade.
- D. This mode replaces the UEFI shell typically available as a boot fallback.

Answer: A

NEW QUESTION 489

Scenario

In this scenario, you will refer to screenshots about Cisco UCS B-Series servers and UCS Manager. Instructions

To access the multiple-choice questions, click on the numbered boxes on the left of the top panel. There are four multiple-choice questions with this task. Be sure to answer all four questions before selecting the Next button.

DCUCI 5.0 Lab Topology—Backbone

Legend:

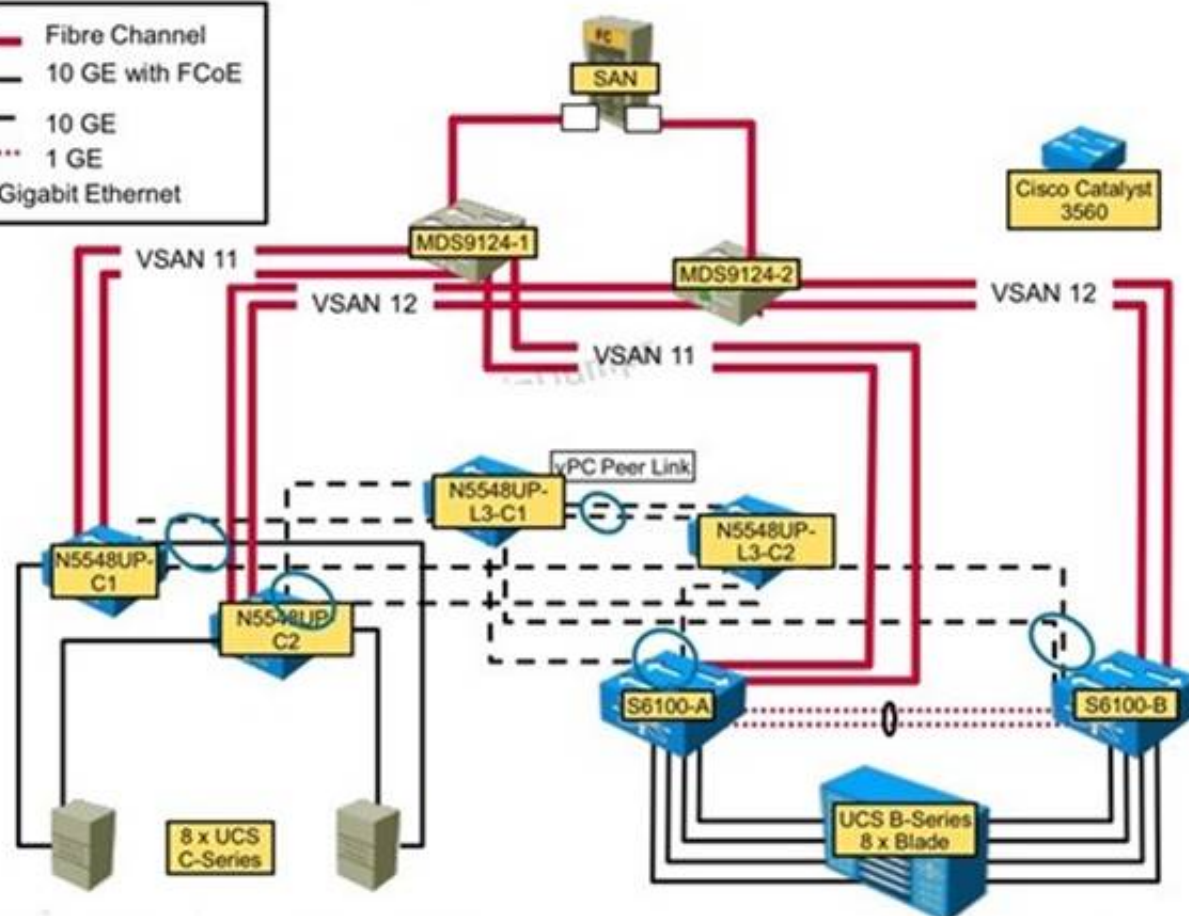
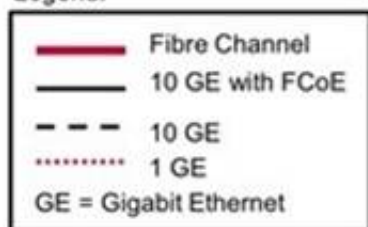


Exhibit4

Trap Details

Trap Settings

ID: 1

Enabled: ☐

SNMP Version: V3

Trap Type: ☒ Trap ☐ Inform

User: None

Destination IP: 0.0.0.0

OK Reset Values Close

Exhibit5

User Details

User Properties

ID: 2

Enabled: ☐

Username:

Role: read-only

Change Password: ☒

New Password:

Confirm New Password:

Save Changes Reset Values Cancel

Refer to the screenshot in Exhibit 2. Which item is true about Boot Order in Cisco UCS –Series Rack Servers?

- A. Boot order configured in the BIOS will not be reflected in the Cisco IMC GUI.
- B. Boot options should not be disabled in the BIOS.
- C. The Boot Order set in the BIOS does not override the Cisco IMC.
- D. Boot Order should only be configured in the Cisco IMC GUI.

Answer: A

NEW QUESTION 491

An administrator is testing the Cisco Nexus 1000v switch on top of a Cisco UCS Blade. They realize that the test VM traffic is not marked correctly after it leaves the Cisco UCS B-series blade. What is the reason for seeing this behavior?

- A. The Cisco UCS does not support QoS marking

- B. The Cisco UCS QoS policy applied to the blade has the host control set to "none."
- C. The Cisco Nexus 1000V Series Switches do not support QoS marking.
- D. The Cisco Nexus 1000V Series Switch QoS marking has not been enabled with "feature gos."

Answer: B

NEW QUESTION 494

Where do you configure the VLAN when provisioning new VLANs in VM-FEX?

- A. vCenter on the port group
- B. Cisco UCS Manager on the port profile
- C. Cisco UCS Manager on the service profile
- D. vCenter on the host

Answer: B

NEW QUESTION 499

Which policy determines what happens to local disks when they are disassociated from a service profile?

- A. maintenance policy
- B. local disk policy
- C. scrub policy
- D. BIOS policy

Answer: C

NEW QUESTION 504

You have a Cisco UCS C-Series Server. What can you use to log the blade server statistics?

- A. the Cisco Integrated Management Controller log
- B. RADIUS
- C. LDAP
- D. the XML API

Answer: A

Explanation: Reference:

<http://www.cisco.com/c/en/us/products/collateral/servers-unified-computing/ucs-cseries-rack-servers/datasheet-c>

NEW QUESTION 506

Which three options are needed when configuring local zoning on the Cisco UCS Fabric Interconnects? (Choose three.)

- A. The fabric interconnects are operating in FC switching mode.
- B. The fabric interconnects are operating in FC end-host mode.
- C. SAN connectivity policy
- D. storage connection policy
- E. FC target endpoints
- F. iSCSI target endpoints

Answer: ADE

NEW QUESTION 509

Which two parameters are used by Cisco UCS for automatic Fibre Channel uplink pinning?

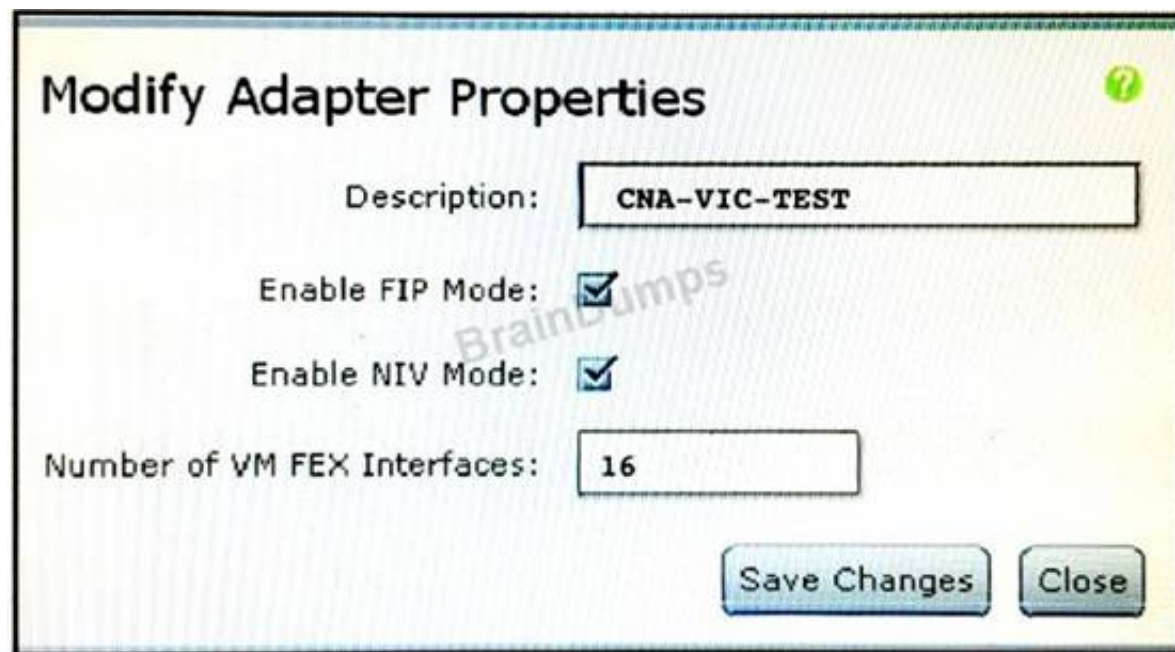
- A. server WWN
- B. MDS WWNN
- C. VSAN membership
- D. hash algorithm
- E. vHBA MAC address

Answer: AC

Explanation: https://www.cisco.com/c/en/us/td/docs/unified_computing/ucs/sw/gui/config/guide/3-0/b_UCSM_GUI_User_G https://www.cisco.com/c/en/us/td/docs/unified_computing/ucs/sw/gui/config/guide/2-0/b_UCSM_GUI_Configuration_

NEW QUESTION 511

Refer to the exhibit.



From the Cisco Integrated Management Controller GUI, the Cisco Network Assistant VIC adapter properties of a Cisco UCS -Series Server in standalone mode are configured as shown. Which three options are results of the configuration? (Choose three.)

- A. Sixteen dynamic vNICs on the Cisco Network Assistant VIC adapter are provisioned.
- B. A description for the Cisco Network Assistant VIC adapter is assigned.
- C. Sixteen static vNICs on the Cisco Network Assistant VIC adapter are provisioned.
- D. FIP support on the Cisco Network Assistant VIC adapter is enabled.
- E. Sixteen dynamic device aliases for vNICs on the Cisco Network Assistant VIC adapter are provisioned.
- F. NIV mode for the Cisco Network Assistant VIC adapter is disabled.

Answer: ABD

Explanation: Reference:

<http://www.cisco.com/c/en/us/support/docs/switches/nexus-5000-seriesswitches/117690-configure-vmfex-00.ht>

NEW QUESTION 514

Which option describes the difference between "high-performance" and "none" on a VM-FEX port profile?

- A. None is software assisted, and high-performance is software and hardware assisted.
- B. None indicates that VM-FEX is not used on this interface, and high-performance indicates that is used.
- C. None is used for management profiles, and high-performance is used for mission-critical data profiles.
- D. None assumes default scheduling settings for the port profile, and high-performance gives the ports priority in scheduling.

Answer: A

NEW QUESTION 517

Under which condition can you select the option to "remove" a blade server from within the Cisco UCS Manager?

- A. The server has been decommissioned before physical removal.
- B. The server has been sent a diagnostic interrupt.
- C. The server has been physically removed before decommission.
- D. The server has been powered down.

Answer: C

NEW QUESTION 521

Which two policies can specify that a port channel be configured between the fabric extender and fabric interconnect? (Choose two.)

- A. Chassis or fabric extender discovery policy
- B. Rack server discovery policy
- C. Rack management connection policy
- D. Server inheritance policies
- E. Autoconfig policies
- F. Chassis connectivity policy

Answer: AF

Explanation: Reference:

http://www.cisco.com/c/en/us/td/docs/unified_computing/ucs/sw/gui/config/guide/20/b_UCSM_GUI_Configura

NEW QUESTION 526

Which two factors determine the recommended maximum number of virtual interfaces on a Cisco UCS system? (Choose two.)

- A. the number of compute blades in the system
- B. the number of interfaces sharing the uplinks
- C. the driver version on the OS running on the compute blade
- D. the number of uplinks between I/O Module and Fabric Interconnect

Answer: CD

Explanation: https://www.cisco.com/c/en/us/td/docs/unified_computing/ucs/c-series_integration/ucsm2-0-2/b_UCSM_202_C The number of uplinks between I/O Module and Fabric Interconnect https://www.cisco.com/c/en/us/td/docs/unified_computing/ucs/ucs-manager/Reference-Docs/ConfigurationLimi the driver version on the OS running on the compute blade

NEW QUESTION 529

From the Cisco UCS Manager GUI, which two configurations can be performed for Cisco UCS C-Series Rack-Mount Servers from the rack server discovery policy? (Choose two.)

- A. Whether the server is discovered immediately or after the acknowledgement of the administrator
- B. Defines the scrub policy to be used upon discovery
- C. Defines the management IP address to be associated to the server upon discovery
- D. Reverts a -Series server from Cisco UCS domain mode to standalone mode
- E. Defines the Cisco Host Upgrade Utility ISO file for the rack servers connected to the fabric interconnects

Answer: AB

Explanation: Reference:

http://www.cisco.com/c/en/us/td/docs/unified_computing/ucs/sw/gui/config/guide/20/b_UCSM_GUI_Configura

NEW QUESTION 534

Which items are hot-swappable on a UCS C-Series Server? (Choose-two)

- A. Internal Cooling Fans
- B. Power Supplies
- C. PCIe Card
- D. Mezzanine Card
- E. Riser Card

Answer: AB

Explanation: https://www.cisco.com/c/en/us/td/docs/unified_computing/ucs/c/hw/C240M4/install/C240M4/replace.html

NEW QUESTION 537

You are implementing a UCS B-Series environment for a customer with both bare-metal and virtualized servers. The bare-metal servers require two vNICs and two vHBAs. Administrators of virtualized servers will be utilizing VN-Link technology. Which adapter should be recommended?

- A. Cisco UCS M81KR
- B. Cisco UCS M72KR-Q
- C. Cisco UCS M71KR-E
- D. Cisco UCS P81E
- E. Cisco UCS M51KR-B

Answer: A

Explanation: M81KR (supports many adapters and VN-LINK)

https://www.cisco.com/c/en/us/products/collateral/servers-unified-computing/ucs-b-series-blade-servers/data_sh M72KR-Q (supports only one adapter, does not support VN-LINK)

https://www.cisco.com/c/en/us/products/collateral/servers-unified-computing/ucs-b-series-blade-servers/data_sheet_c78-623738.html

M71KR-E (supports only one adapter, does not support VN-LINK) https://www.cisco.com/c/en/us/products/collateral/servers-unified-computing/ucs-b-series-blade-servers/data_sheet_c78-703582.html

P81E (supports many adapters, does not support VN-LINK) https://www.cisco.com/c/en/us/products/collateral/servers-unified-computing/ucs-c-series-rack-servers/data_sheet_c78-558230.html M51KR-B (this is not a converged network adapter CNA, and does not support vHBAs)

https://www.cisco.com/c/dam/en/us/products/collateral/servers-unified-computing/ucs-b-series-blade-servers/spec_sheet_c17-644236.pdf

NEW QUESTION 538

Which maintenance action releases the assigned chassis ID for future use?

- A. Acknowledge chassis
- B. Reset CMOS
- C. Decommission chassis
- D. Remove chassis

Answer: C

Explanation: Reference: http://www.cisco.com/c/en/us/td/docs/unified_computing/ucs/sw/gui/config/guide/22/b_UCSM_GUI_Configura 86ACDE9D13C222A452

NEW QUESTION 541

With Cisco UCS Manager, in which location do you monitor the chassis discovery process?

- A. CMC

- B. FSM
- C. CDP
- D. DME

Answer: B

Explanation: Reference:

http://www.cisco.com/c/en/us/td/docs/unified_computing/ucs/sw/gui/config/guide/20/b_UCSM_GUI_Configura

NEW QUESTION 542

Which configuration must be made to run the fabric interconnects as a vPC pair?

- A. The Ethernet mode must be set to switching.
- B. The Layer 1 and Layer 2 cables must be configured as a vpc
- C. The fabric interconnects cannot run as a VPC pair
- D. The ethernet mode must be set to end host

Answer: C

Explanation: <https://supportforums.cisco.com/t5/unified-computing-system/benefits-to-vpc-on-6200s-fabric-interconnects-inu>

NEW QUESTION 543

Which boot option must be present in the boot policy to have the option to manually boot from the FlexFlash Secure Digital card?

- A. any configuration
- B. FlexFlash state
- C. local disk
- D. remote virtual drive

Answer: C

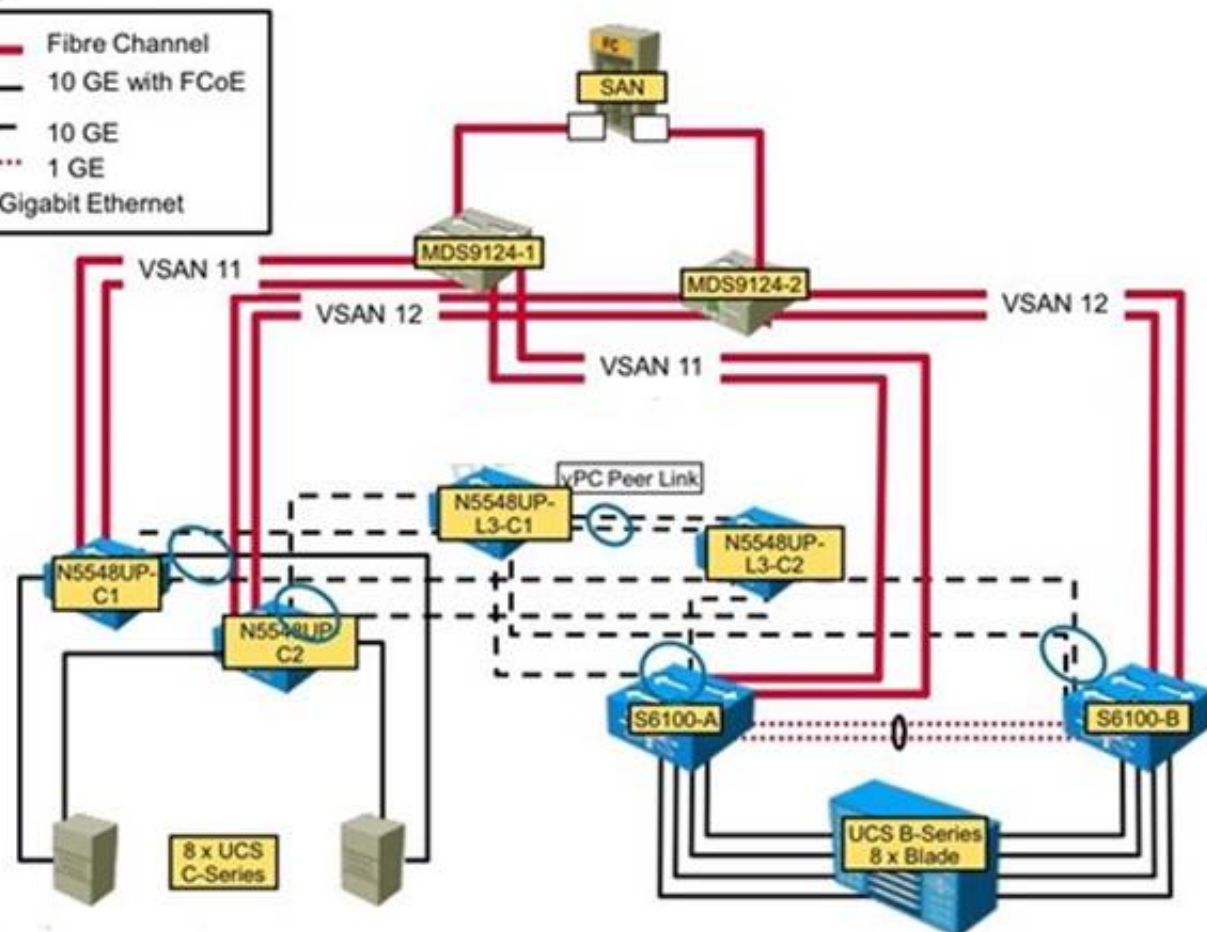
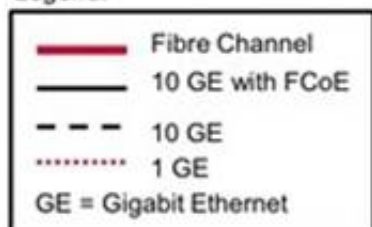
NEW QUESTION 547

Scenario

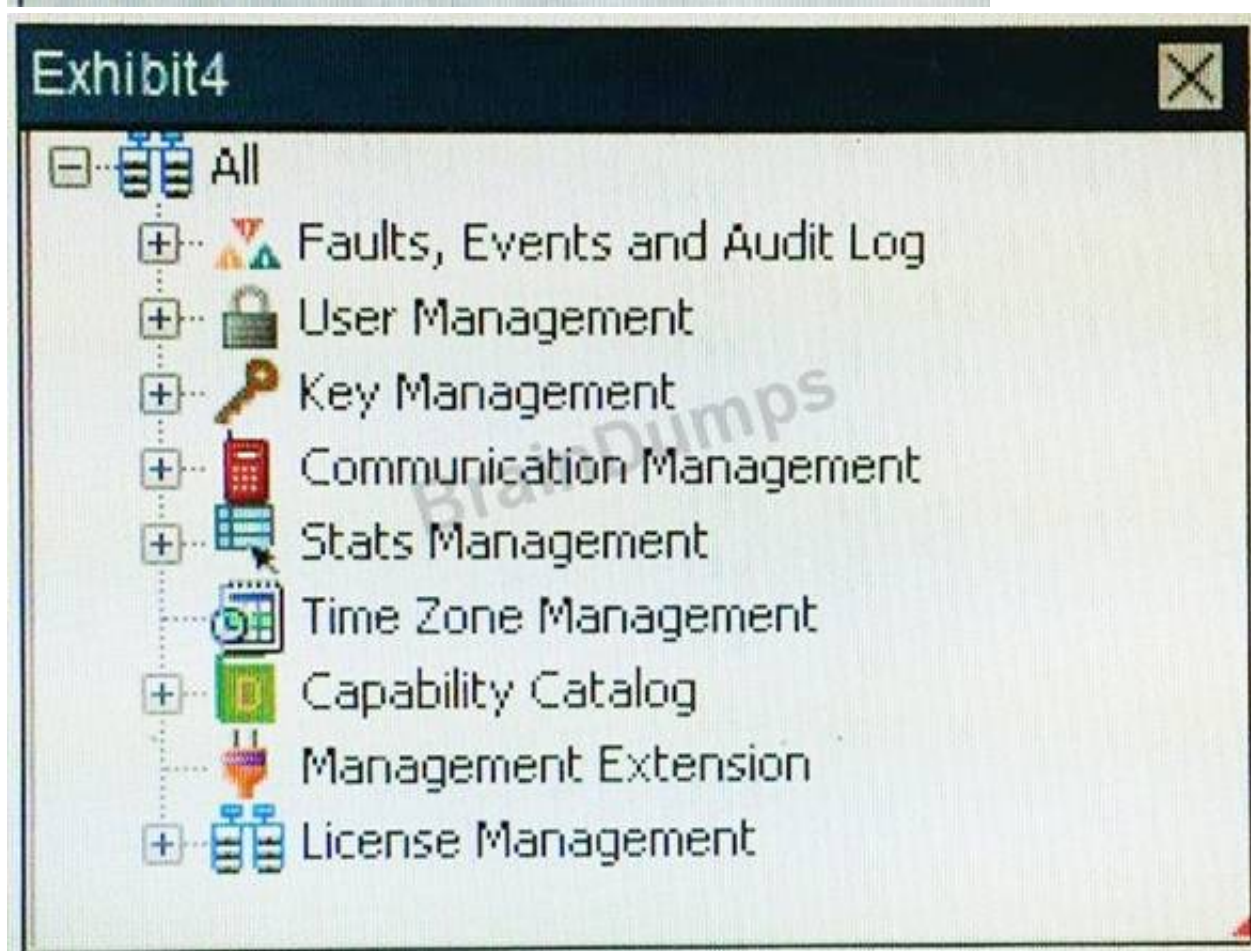
In this scenario, you will refer to screenshots about Cisco UCS B-Series servers and UCS Manager. Instructions

To access the multiple-choice questions, click on the numbered boxes on the left of the top panel There are four multiple-choice questions with this task. Be sure to answer all four questions before selecting the Next button.

Legend:



```
Exhibit2
interface Vethernet749
  description server 1/1, VNIC vNIC0
  switchport mode trunk
  untagged cos 4
  no pinning server sticky
  pinning server pinning-failure link-down
```

Which log would you view to determine which UCS Manager user modified a Service Profile?

- A. Events
- B. Audit
- C. Syslog
- D. SEL

Answer: D

Explanation: Reference: http://www.cisco.com/c/en/us/td/docs/unified_computing/ucs/sw/gui/config/guide/20/b_UCSM_GUI_Configuration_01101.html

NEW QUESTION 552

Refer to the exhibit below.

| Name | Type | Site | Description | Location | |
|-------------|---------|-----------------|------------------------|----------|----|
| Default Pod | | | Default datacenter | | No |
| Pod 1 | Generic | Production Site | Pod 1 Prod Data Center | | No |
| Pod 2 | Generic | DR Site | DR Site Pod 1 | | No |

Which tab do you select to add an APIC account when adding an ACI fabric?

- A. Multi-Domain Managers
- B. Physical Accounts
- C. Managed Network Elements
- D. Bare Metal Agents

Answer: A

Explanation: [https://www.cisco.com/c/en/us/td/docs/unified_computing/ucs/ucs-director/apic-management-guide/5-4/b_UCS Step 1](https://www.cisco.com/c/en/us/td/docs/unified_computing/ucs/ucs-director/apic-management-guide/5-4/b_UCS_Step_1) On the menu bar, choose Administration > Physical Accounts.

Step 2 Click the Multi-Domain Managers tab. Step 3 Click Add.

Step 4 In the Add Account dialog box, choose APIC from the Account Type drop-down list. Step 5 Click Submit.

NEW QUESTION 557

Which three components are parts of the Cisco UCS -Series Blade Server software bundle? (Choose three.)

- A. the adapter firmware
- B. the Kernel and system firmware for fabric interconnects
- C. the BIOS firmware
- D. the IOM firmware
- E. the Cisco UCS Manager software
- F. the board controller firmware

Answer: ACF

Explanation: Reference:

http://www.cisco.com/c/en/us/td/docs/unified_computing/ucs/sw/firmware-mgmt/gui/2-2/b_GUI_Firmware_Ma

NEW QUESTION 561

Which statement about the Cisco Integrated Management Controller configuration utility for Cisco UCS CSeries servers is true?

- A. To connect to the Cisco Integrated Management Controller GUI, you must use a web browser that supports SSL3 and HTML5.
- B. To connect to the Cisco Integrated Management Controller GUI, you must use a web browser that supports HTTP and Microsoft Silverlight.
- C. While in BIOS, you can configure the Cisco Integrated Management Controller to use a static IP address only.
- D. While in BIOS, you can configure the Cisco Integrated Management Controller to use a static IP address or an IP address from DHCP
- E. When the IP address is configured in BIOS, you can point a Web browser to the configured IP address to open the Cisco Integrated Management Controller GUI.

Answer: D

Explanation: <https://www.cisco.com/c/en/us/support/docs/servers-unified-computing/ucs-c200-m1-high-density-rack-mountse>

NEW QUESTION 565

Which two settings are required when utilizing DirectPath I/O? (Choose two.)

- A. CPU pinning
- B. full memory reservation
- C. Set port profile performance to "high".
- D. vCPU pinning

- E. VM queue modification
- F. adapter profile update
- G. Install DirectPath VIB on host.
- H. Enable VMQ with the "enable-netadaptervmq" cmdlet.

Answer: BC

NEW QUESTION 569

Which scheduling option sets the number of tasks that can be run?

- A. max number of concurrent tasks
- B. max changes
- C. max number of tasks
- D. max configuration requests

Answer: C

NEW QUESTION 570

Which two parameters must be configured on a standalone Cisco UCS C-Series Server to export the technical support data to a remote server? (Choose two)

- A. Specify a remote TFTP server IP address.
- B. Install a certificate
- C. Install an FTP server
- D. Set the source as the UCS server IP address.
- E. Specify the remote relative path and file name.

Answer: AE

Explanation: Reference:

https://www.cisco.com/c/en/us/td/docs/unified_computing/ucs/c/sw/gui/config/guide/2-0/b_Cisco_UCS_Cseries

NEW QUESTION 574

Which three tasks can a user with the ext-lan-policy privileges perform? (Choose three.)

- A. Configure management interfaces on the fabric interconnect.
- B. Configure Ethernet pin groups.
- C. Configure management interfaces monitoring policy.
- D. Create/modify/delete vNIC/vHBA placement policies.
- E. Configure DNS providers and DNS domain.
- F. Specify the allowed range for virtual MAC addresses.
- G. Configure fabric interconnect system name.
- H. This privilege has full access to all operations.

Answer: BDF

NEW QUESTION 577

Which statement about fabric failover for Fibre Channel communication is true?

- A. You can enable hardware Fibre Channel failover.
- B. Cisco UCS load balances Fibre Channel traffic between the two fabrics.
- C. You must use a Fibre Channel multipath I/O driver.
- D. You do not have to use anything.

Answer: C

Explanation: Reference:

<https://supportforums.cisco.com/t5/unified-computing-system/san-multi-pathing-best-practices/td-p/1545645> <https://www.cisco.com/c/en/us/support/docs/servers-unified-computing/unified-computing-system/116471-confi> <https://kb.netapp.com/support/s/article/how-to-verify-windows-fibre-channel-configurations-with-multipathing-i>

NEW QUESTION 579

Which statement about high-availability clusters for Cisco UCS Fabric Interconnects is true?

- A. Peers in a cluster must connect to each other by using two 10-Gbps links.
- B. The cluster requires a minimum of two IP addresses.
- C. The management plane is active/standby.
- D. The data plane is active/standby.

Answer: C

Explanation: Reference:

http://www.cisco.com/c/en/us/td/docs/unified_computing/ucs/sw/gui/config/guide/20/b_UCSM_GUI_Configura

NEW QUESTION 584

You must upgrade a Cisco UCS -Series Server. Where must the Cisco UCS bundle image be located before you can begin the upgrade?

- A. the Cisco Integrated Management Controller memory of the server
- B. a USB drive connected to a Cisco UCS Fabric Interconnect
- C. a TFTP server accessible to the Cisco UCS Fabric Interconnect
- D. the flash file system of the fabric interconnect

Answer: C

Explanation: Reference:

http://www.cisco.com/c/en/us/td/docs/unified_computing/ucs/sw/firmware-mgmt/gui/21/b_GUI_Firmware_Manager.html#concept_1923688E7A2E46239DCAE363E4A3DE81

NEW QUESTION 588

When deploying a dynamic FCoE topology using ECMP, what ancillary technology is used?

- A. Fabricpath
- B. EIGRP
- C. VXLAN

Answer: A

Explanation: Reference:

<https://blogs.cisco.com/datacenter/what-is-dynamic-fcoe>

NEW QUESTION 593

Which two components can be specified in a host firmware package? (Choose two.)

- A. CPU
- B. BIOS
- C. Cisco Integrated Management Controller
- D. LOM
- E. DIMM

Answer: BC

NEW QUESTION 598

Refer to the exhibit

Management Interfaces

Management Interfaces | Management Interfaces Monitoring Policy

Virtual IP

IPv4 Address: **10.0.0.200**

IPv6 Address: ::

Domain Name:

Name: **machine**

System Owner:

System Site:

System Description:

Mode: **Cluster**

Fabric Interconnect A

IPv4 | IPv6

IP Address: **10.0.0.198**

Subnet Mask: **255.255.255.0**

Default Gateway: **10.0.0.111**

Fabric Interconnect B

IPv4 | IPv6

IP Address: **10.0.0.199**

Subnet Mask: **255.255.255.0**

Default Gateway: **10.0.0.111**

Ok Apply Cancel Help

Fabric Interconnect B is in a primary state. Which IP addresses can you use to connect to Fabric Interconnect B?

- A. 10.0.0.198, 10.0.0.199 and 10.0.0.200
- B. 10.0.0.199 only
- C. 10.0.0.199 and 10.0.0.200 only
- D. 10.0.0.200 only

Answer: C

NEW QUESTION 599

You plan to implement FCoE on a Cisco UCS -Series server. Which option must you configure from the Cisco Integrated Management Controller GUI?

- A. a vNIC failover
- B. a boot table entry
- C. NIV
- D. FIP mode

Answer: D

Explanation: Reference:

http://www.cisco.com/c/en/us/td/docs/unified_computing/ucs/c/sw/gui/config/guide/1-21/b_Cisco_UCS_CSeries_1/Cisco_UCS_CSeries_Servers_Integrated_Management_Controller_Configuration_Guide_1_2_1_chapter9.ht

NEW QUESTION 600

Which consideration must be made when utilizing a WWxN pool?

- A. Only HBA templates can use WWxN pools.
- B. WWNN assignment must be set to derived.
- C. WWPN assignment must be set to derived.
- D. A SAN connectivity policy must be used.

Answer: C

NEW QUESTION 602

Which options is the only supported link aggregation protocol on Cisco UCS Manager?

- A. Multipath
- B. PagP
- C. FLOGI
- D. LACP
- E. FCOE

Answer: D

Explanation: UCS port channel configuration is statically set to Link Aggregation Control Protocol (LACP) mode active. This configuration cannot be modified; therefore, all upstream port-channel configurations must adhere to LACP mode active as well. Alternatively, you can configure the upstream switchports for LACP mode passive.

Reference:

<https://www.cisco.com/c/en/us/support/docs/servers-unified-computing/ucs-manager/116095-configure-ucsupstr>

NEW QUESTION 603

When using VM-FEX, the new VMs are not connected, but existing VMs are unaffected. Which option describes the most likely cause?

- A. Binding is set to ephemeral on the DVS, but it must be set to static.
- B. Dynamic NICs have been exhausted.
- C. Hostd on the host has stopped responding to Cisco UCS Manager.
- D. The adapter has failed.

Answer: B

NEW QUESTION 604

Which two statements describe effects of enabling a Cisco UCS Fabric Interconnect in Ethernet end-host mode? (Choose two.)

- A. MAC address learning is disabled on the uplink ports of the fabric interconnect.
- B. MAC address learning is enabled on the server ports of the fabric interconnect.
- C. Server-to-server communication on the same VLAN is not performed locally via fabric interconnect, but requires an external switch.
- D. By default, unicast traffic received by the fabric uplink port to unknown destination MAC addresses is forwarded to all of the server ports.
- E. MAC address learning is disabled on all of the ports in Ethernet end-host mode.

Answer: AB

Explanation: https://www.cisco.com/c/en/us/solutions/collateral/data-center-virtualization/unified-computing/whitepaper_c11 MAC address learning occurs only on the server ports; MAC address movement is fully supported.

Server-to-server Layer 2 traffic is locally switched. In end-host mode, unknown unicast broadcasts are not flooded, switch mode is required. Additionally, because there is no MAC address learning on the uplink ports, the MAC address table can scale to support as many virtual machines as the number of entries available in the MAC address forwarding table.

NEW QUESTION 608

You attempt to perform an ESXi update on a Cisco UCS C250 server, but the update does not recognize the NICs. You must perform the update as quickly as possible. Which step must you do first?

- A. Check the UCS compatibility matrix and replace the NIC with a supported one.
- B. Reconfigure the NIC ID on the LOM.
- C. Update the LOM firmware by using the Cisco Host Update Utility.
- D. Update the NIC firmware by using the Cisco Host Update Utility.

Answer: C

Explanation: <https://supportforums.cisco.com/t5/unified-computing-system/ucs240m3-network-interfaces-missing-on-esxi-5-http://terenceluk.blogspot.com/2011/08/updating-firmware-for-cisco-ucs-c.html>

NEW QUESTION 609

Which policy is used to specify how Cisco UCS Manager should proceed for configuration changes that will have a service impact?

- A. host firmware policy
- B. maintenance policy
- C. local disk policy
- D. BIOS policy

Answer: B

NEW QUESTION 610

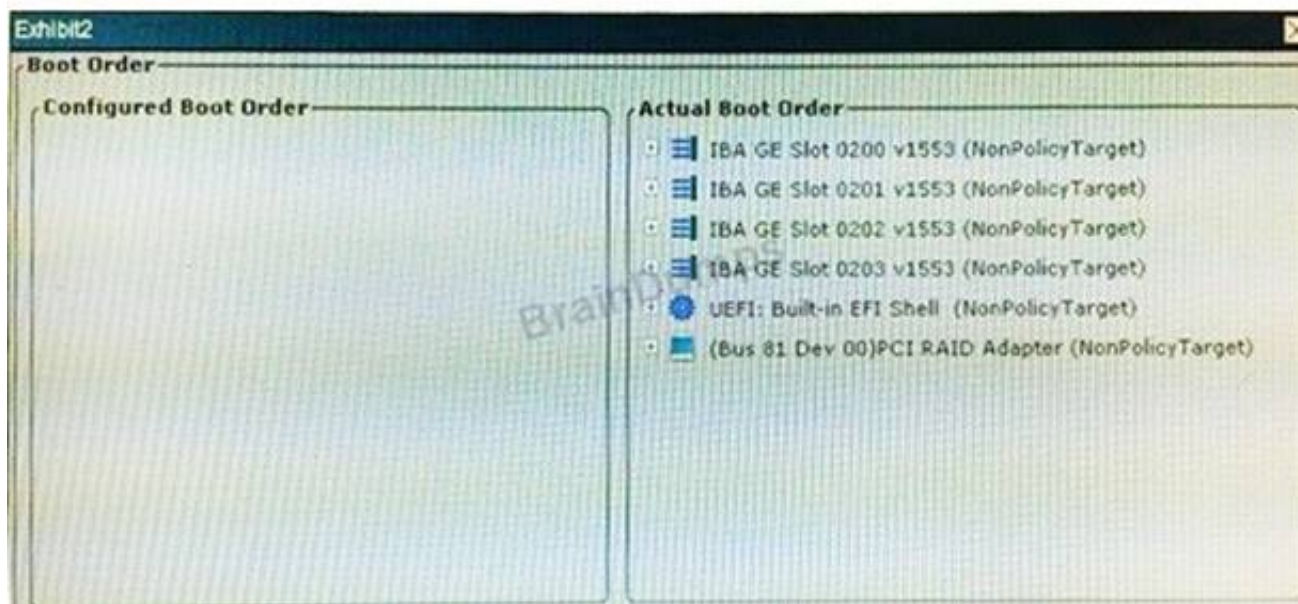
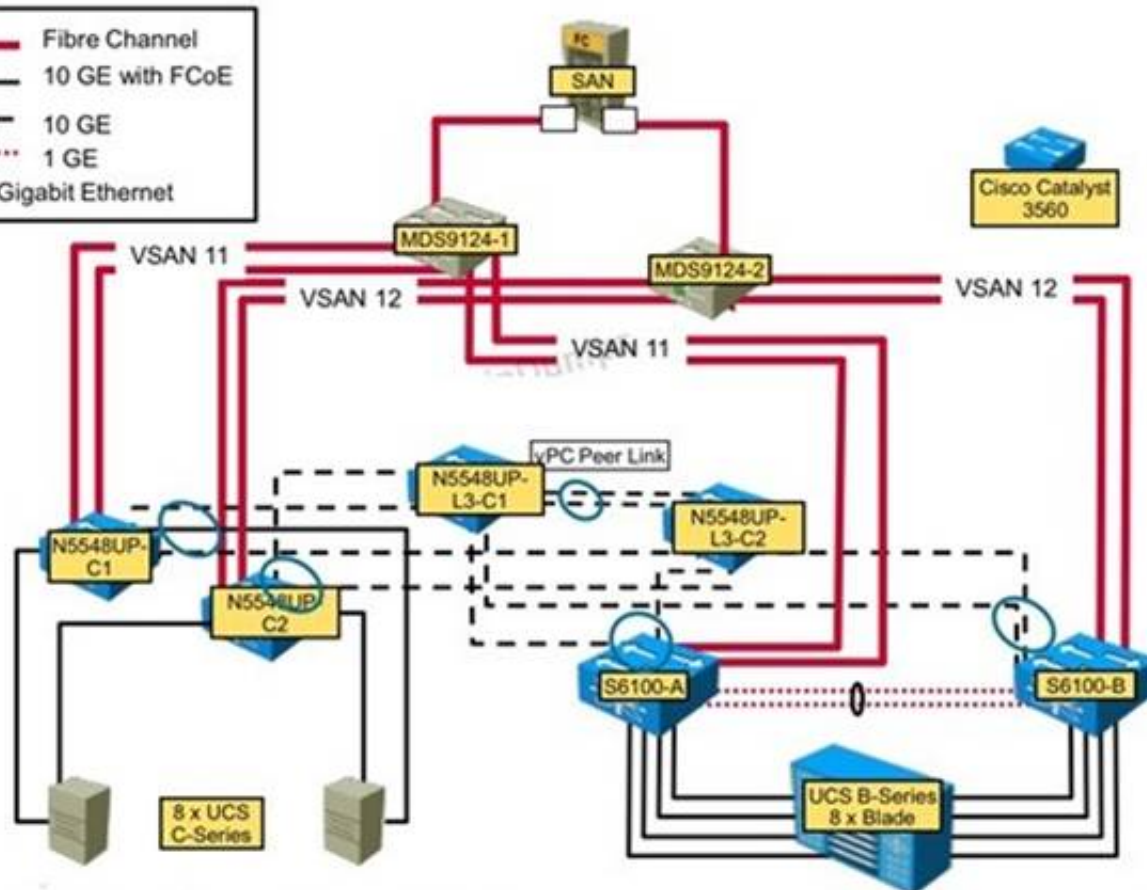
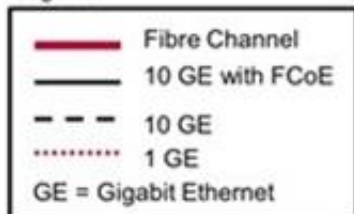
Scenario

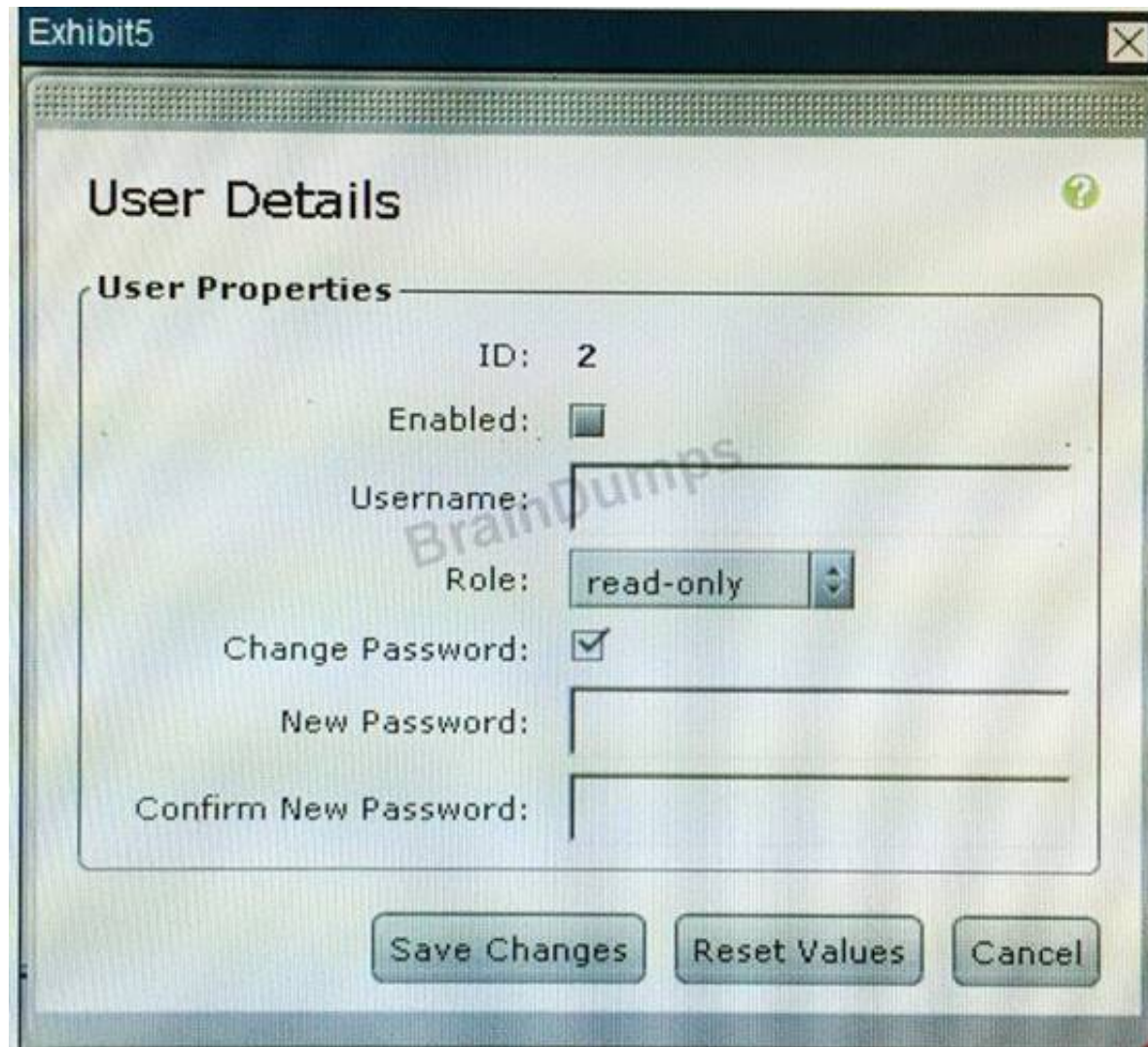
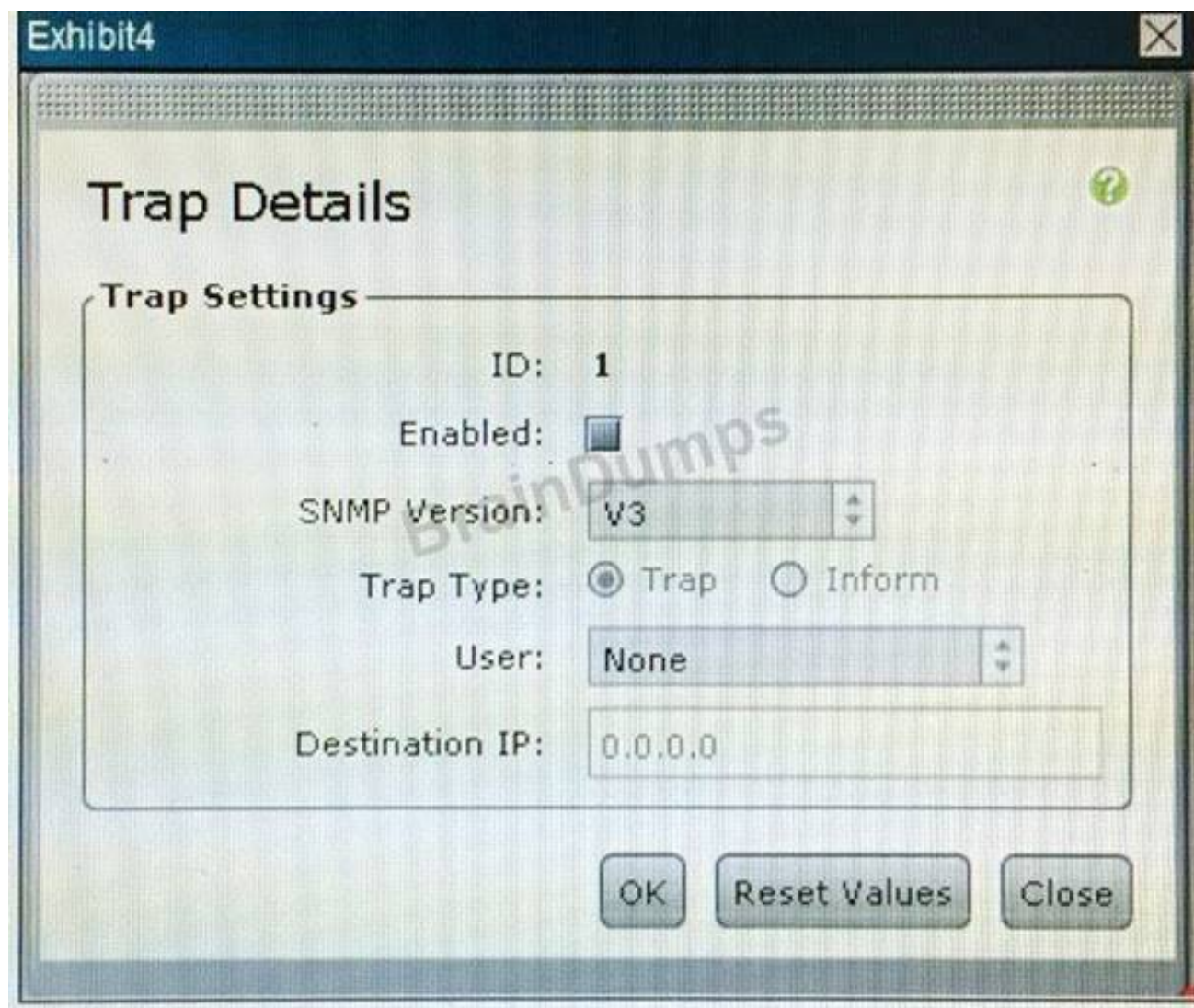
In this scenario, you will refer to screenshots about Cisco UCS B-Series servers and UCS Manager. Instructions

To access the multiple-choice questions, click on the numbered boxes on the left of the top panel. There are four multiple-choice questions with this task. Be sure to answer all four questions before selecting the Next button.

DCUCI 5.0 Lab Topology—Backbone

Legend:





Refer to the screenshot in Exhibit 3. Which tab would you choose to determine that a user failed to login to Cisco IMC?

- A. Fault Summary
- B. System Event Log
- C. CIMC Log
- D. Logging Controls

Answer: C

Explanation: Reference:

http://www.cisco.com/en/US/docs/unified_computing/ucs/c/sw/gui/config/guide/1.5/b_Cisco_UCS_C-series_G

NEW QUESTION 612

.....

Thank You for Trying Our Product

* 100% Pass or Money Back

All our products come with a 90-day Money Back Guarantee.

* One year free update

You can enjoy free update one year. 24x7 online support.

* Trusted by Millions

We currently serve more than 30,000,000 customers.

* Shop Securely

All transactions are protected by VeriSign!

100% Pass Your 300-175 Exam with Our Prep Materials Via below:

<https://www.certleader.com/300-175-dumps.html>