

Exam Questions 70-703

Administering Microsoft System Center Configuration Manager and Cloud Services Integration

<https://www.2passeasy.com/dumps/70-703/>



NEW QUESTION 1

You have a deployment of System Center Configuration Manager (Current Branch) that contains a primary site server named CM01. You have a line-of-business application named App1 that is a Microsoft Application Virtualization (App-V) package. The media for App1 is in the D:\Sources\AppV\App1 folder on CM01. The D:\Sources folder is shared as Sources\$. You need to create a new Configuration Manager application for the deployment of App1. How should you complete the command? To answer, select the appropriate options in the answer area. NOTE: Each correct selection is worth one point.

Answer Area

Add-CMAppv5XDeploymentType

Get-CMApplication

Get-CMPackage

New-CMApplication

New-CMPackage

New-CMProgram

- name "App1"

Add-CMAppv5XDeploymentType

Get-CMApplication

Get-CMPackage

New-CMApplication

New-CMPackage

New-CMProgram

-ContentLocation \\CM01\source\$\Appv\app1

-DeploymentTypeName "Install App1"

Answer:

Explanation: References:
<https://docs.microsoft.com/en-us/powershell/module/configurationmanager/new-cmapplication?view=sccm-ps> <https://docs.microsoft.com/en-us/powershell/module/configurationmanager/add-cmappv5xdeploymenttype?view=sccm-ps>

NEW QUESTION 2

Note: This question is part of a series of questions that use the same scenario. For your convenience, the scenario is repeated in each question. Each question presents a different goal and answer choices, but the text of the scenario is exactly the same in each question in this series.

Start of repeated scenario.

Your network contains an Active directory forest named adatum.com.

All client computers run Windows 10 Enterprise. All the computers are named by using the name of their respective department and an incremental three-digit number. For example, the first computer in the sales department is named Sales001.

Several managers use tablets that run Windows 10 and have 3 GB of RAM. All other client computers have at least 8 GB RAM.

Adatum.com is synchronized to Microsoft Azure Active Directory. Your company implements the Microsoft Store for Business.

You have a deployment of System Center Configuration Manager (Current Branch) that has discovery configured. All the client computers have the Configuration Manager client installed.

The company uses the applications shown in the following table.

Application Name	Description
App1	A Microsoft Application Virtualization (APP-V) virtual application
App2	An app that the company purchased from the Microsoft Store for Business and is licensed for offline use
App3	A 64-bit application that is deployed to all the client computers
SalesAppLite	An application used by users in the sale department on computers that have 3 GB of Ram or less
SalesAppFull	An application used by users in the sale department on computers that have more than 3 GB of Ram.

The company identifies the following requirements for software deployments:

- ▶ View the Upgrade Readiness data of all the client computers.
- ▶ Deploy App1 to the client computers in the marketing department.
- ▶ Deploy App2 to the client computers in the human resources (HR) department.
- ▶ Monitor the usage of App3.
- ▶ Deploy SalesAppLite to sales department computers that have 3 GB of RAM or less.
- ▶ Deploy SalesAppFull to sales department computers that have more than 3 GB of RAM.

You create a cloud-based distribution point that has a public name of d1594d4527614a09b934d470. End of repeated scenario.

You need to ensure that you can deploy App1 to the marketing department computers. What should you do?

- A. Download the App-V client and install the client by using a Group Policy object (GPO).
- B. Sequence App1 by using the App-V Sequencer.
- C. Download the App-V client and deploy the client by using a Configuration Manager application.
- D. Deploy a Group Policy object (GPO) that enables the App-V client.

Answer: C

Explanation: References:

<https://docs.microsoft.com/en-us/windows/application-management/app-v/appv-enable-the-app-v-desktop-client>

NEW QUESTION 3

Note: This question is part of a series of questions that present the same scenario. Each question in the series contains a unique solution that might meet the stated goals. Some question sets might have more than one correct solution, while others might not have a correct solution.

After you answer a question in this section, you will NOT be able to return to it. As a result, these questions will not appear in the review screen.

You plan to deploy System Center Configuration Manager (Current Branch) by using an initial pilot deployment

The pilot deployment will contain five computers that run Windows 10.

You need to deploy the Configuration Manager client to the five computers only. Solution: From each client, you run CMEnroll.exe.

Does this meet the goal?

- A. Yes
- B. No

Answer: B

NEW QUESTION 4

Note: This question is part of a series of questions that present the same scenario. Each question in the series contains a unique solution that might meet the stated goals. Some question sets might have more than one correct solution, while others might not have a correct solution.

After you answer a question in this section, you will NOT be able to return to it. As a result, these questions will not appear in the review screen.

You need to deploy the Configuration Manager client to the five computers only.

Solution: From the Configuration Manager console, you create a custom package. Deploy the package to the All Unknown Computers collection.

Does this meet the goal?

- A. Yes
- B. No

Answer: A

NEW QUESTION 5

You have a deployment of System Center Configuration Manager (Current Branch). 5,000 computers have the Configuration Manager client installed.

You need to deploy an online-licensed app named App1 from the Microsoft Store for Business to all Configuration Manager clients.

What should you do first?

- A. From the Configuration Manager console, launch the Microsoft Azure Services Wizard and select Microsoft Store for Business.
- B. From the Microsoft Store for Business portal, create a new AutoPilot deployment profile.
- C. From the Microsoft Store for Business portal, invite a line-of-business (LOB) publisher to your organization.
- D. From the Configuration Manager console, create a new collection.

Answer: D

NEW QUESTION 6

Note: This question is part of a series of questions that use the same scenario. For your convenience, the scenario is repeated in each question. Each question presents a different goal and answer choices, but the text of the scenario is exactly the same in each question in this series.

Start of repeated scenario

Your network contains an Active directory forest named adatum.com.

All client computers run Windows 10 Enterprise, Semi-Annual Channel targeted). All the computers are named by using the name of their respective department and an incremental three-digit number. For example, the first computer in the sales department is named Sales001.

Several managers use tablets that run Windows 10 and have 3 GB of RAM. All other client computers have at least 8 GB RAM.

Adatum.com is synchronized to Microsoft Azure Active Directory. Your company implements the Microsoft Store for Business.

You have a deployment of System Center Configuration Manager (Current Branch) that has discovery configured. All the client computers have the Configuration Manager client installed.

The company uses the applications shown in the following table.

Application Name	Description
App1	A Microsoft Application Virtualization (APP-V) virtual application
App2	An app that the company purchased from the Microsoft Store for Business and is licensed for offline use
App3	A 64-bit application that is deployed to all the client computers
SalesAppLite	An application used by users in the sale department on computers that have 3 GB of Ram or less
SalesAppFull	An application used by users in the sale department on computers that have more than 3 GB of Ram.

The company identifies the following requirements for software deployments:

- View the Upgrade Readiness data of all the client computers.
- Deploy App1 to the client computers in the marketing department.
- Deploy App2 to the client computers in the human resources (HR) department.
- Monitor the usage of App3.
- Deploy SalesAppLite to sales department computers that have 3 GB of RAM or less.
- Deploy SalesAppFull to sales department computers that have more than 3 GB of RAM.

You create a cloud-based distribution point that has a public name of dl594d4527614a09b934d470. End of repeated scenario.

You need to meet the requirements for the sales department computers.

What are two possible ways to achieve the goal? Each correct answer presents a complete solution. NOTE: Each correct selection is worth one point.

- A. Create two applications that each has one deployment typ
- B. Configure each deployment type to use a device requirement.
- C. Create one application that has two deployment type
- D. Configure each deployment type to use a device requirement.
- E. Create one package that has two program
- F. Configure each program to use a requirement to run on a specific client platform.
- G. Create two packages that each has one progra
- H. Configure each program to use a requirement to run on a specific client platform.

Answer: BC

NEW QUESTION 7

You deploy System Center Configuration Manager (Current Branch). You have client computers that run either Windows 7 or Windows 10.

You need to deploy the Configuration Manager client to meet the following requirements:

- Install the client on the Windows 7 computers the next time the computers restart.

How should you deploy each client? To answer, select the appropriate options in the answer area. NOTE: Each correct selection is worth one point.

Answer Area

Windows 7:

▼

Use client push installation
 Deploy the client to a collection
 Run ccmsetup.exe from a command line.
 Enable an automatic site-wide client push installation.
 Create a Group Policy object (GPO) that runs a startup script.

Windows 10:

▼

Use client push installation
 Deploy the client to a collection
 Run ccmsetup.exe from a command line.
 Enable an automatic site-wide client push installation.
 Create a Group Policy object (GPO) that runs a startup script.

Answer:

Explanation: References: <https://technet.microsoft.com/en-us/library/gg712298.aspx>

NEW QUESTION 8

You deploy the first System Center Configuration Manager primary site server to your organization. You need to create the first user collection. The collection must contain members from an Active Directory security group and must update automatically. Which two actions should you perform? Each correct answer presents part of the solution. NOTE: Each correct selection is worth one point.

- A. Create a user collection that has membership based on a direct rule.
- B. Configure Active Directory Forest Discovery.
- C. Create a user collection that has membership based on a query rule.
- D. Configure Active Directory Group Discovery.
- E. Create a user collection that has membership based on an include collection rule.

Answer: CD

Explanation: References:
<https://docs.microsoft.com/en-us/sccm/core/servers/deploy/configure/configure-discovery-methods> <https://technet.microsoft.com/en-us/library/gg712295.aspx>

NEW QUESTION 9

You have a deployment of System Center Configuration Manager (Current Branch). The Install Behavior for applications feature is enabled. You have a line-of-business application named App1. Version 1.0 of App1 is deployed currently. You need to upgrade App1 to version 2.0. Version 2.0 must be prevented from installing if App1.exe is running. What should you do?

- A. Create a virtual application for version 2.0 of App1. Create a detection method for App1.exe.
- B. Create an application for version 2.0 of App1. Modify the Deployment Types and the Install Behavior settings.
- C. Modify the Deployment Types and the Install Behavior settings for version 1.0 of App1.
- D. Create a virtual application for version 1.0 of App1. Create a detection method for App1.exe.

Answer: C

Explanation: References:
<https://docs.microsoft.com/en-us/sccm/apps/deploy-use/deploy-applications#how-to-check-for-running-executab>

NEW QUESTION 10

Note: This question is part of a series of questions that present the same scenario. Each question in the series contains a unique solution that might meet the stated goals. Some question sets might have more than one correct solution, while others might not have a correct solution. After you answer a question in this section, you will NOT be able to return to it. As a result, these questions will not appear in the review screen. Your company has client computers that run either the 32-bit version of Windows 8 or the 64-bit version of Windows 10. You need to install a line-of-business application to the computers. The 64-bit version of the application must be installed on the Windows 10 computers. Solution: Create two applications that each has one deployment type. Configure a requirement for each deployment type. Does this meet the goal?

- A. Yes
- B. No

Answer: B

Explanation: References:
<https://blogs.technet.microsoft.com/canitpro/2013/06/02/step-by-step-managing-multiple-versions-of-the-same-a>

NEW QUESTION 10

Note: This question is part of a series of questions that present the same scenario. Each question in the series contains a unique solution that might meet the stated goals. Some question sets might have more than one correct solution, while others might not have a correct solution.

After you answer a question in this section, you will NOT be able to return to it. As a result, these questions will not appear in the review screen.

Your company has client computers that run either the 32-bit version of Windows 8 or the 64-bit version of Windows 10.

You need to install a line-of-business application to the computers. The 64-bit version of the application must be installed on the Windows 10 computers.

Solution: Create one application that has one deployment type. Configure two requirements for the deployment type.

Does this meet the goal?

A. Yes

B. No

Answer: B

Explanation: References:

<https://blogs.technet.microsoft.com/canitpro/2013/06/02/step-by-step-managing-multiple-versions-of-the-same-a>

NEW QUESTION 15

You have a deployment of System Center Configuration Manager (Current Branch). You configure the environment for co-management.

You need to install the Configuration Manager client on all computers that are enrolled in Microsoft Intune. Which three actions should you perform? Each correct answer presents part of the solution.

NOTE: Each correct selection is worth one point.

A. Distribute the Configuration Manager client installation files to the cloud-based distribution point.

B. From Intune, deploy an app that contains Ccmsetup.msi.

C. From Configuration Manager, deploy a cloud-based distribution point.

D. From Configuration Manager, enable site-wide client push installation.

E. From Intune, deploy an app that contains Client.msi.

Answer: BDE

NEW QUESTION 17

Note: This question is part of a series of questions that present the same scenario. Each question in the series contains a unique solution that might meet the stated goals. Some question sets might have more than one correct solution, while others might not have a correct solution.

After you answer a question in this section, you will NOT be able to return to it. As a result, these questions will not appear in the review screen.

Your company has client computers that run either the 32-bit version of Windows 8 or the 64-bit version of Windows 10.

You need to install a line-of-business application to the computers. The 64-bit version of the application must be installed on the Windows 10 computers.

Solution: Create one package that uses two programs. Configure a requirement for each program. Does this meet the goal?

A. Yes

B. No

Answer: B

Explanation: References:

<https://blogs.technet.microsoft.com/canitpro/2013/06/02/step-by-step-managing-multiple-versions-of-the-same-a>

NEW QUESTION 22

Your network contains an Active Directory forest named adatum.com. All client computers run Windows 10. You have a deployment of System Center Configuration Manager (Current Branch) that contains a primary site named S01. S01 contains the servers shown in the following table.

Server name	Site system role
Server 1	Software update point
Server 2	Distribution point
Server 3	Service connection point

You plan to use Configuration Manager to deploy software updates. You create a software update group named UpdateGroup1.

You need to ensure that you can deploy express installation files to the client computers.

What should you configure?

A. the Software update point Properties of Server1

B. the Distribution point Properties of Server2

C. the Software Update Point Component Properties of S01

D. the Service connection point Properties of Server3

Answer: A

Explanation: References:

<https://docs.microsoft.com/en-us/sccm/sum/deploy-use/manage-express-installation-files-for-windows-10-updat>

NEW QUESTION 27

Note: This question is part of a series of questions that present the same scenario. Each question in the series contains a unique solution that might meet the stated goals. Some question sets might have more than one correct solution, while others might not have a correct solution.
 After you answer a question in this section, you will NOT be able to return to it. As a result, these questions will not appear in the review screen.
 Your company uses a network ID of 10.0.0.0/8.
 The company opens a new office that uses a network ID of 10.5.0.0/16. The office has three floors. Each floor has a VLAN. The network ID of each VLAN is 10.5.10.0/24, 10.5.20.0/24, and 10.5.30.0/24.
 You create a distribution point for the new office.
 You plan to distribute content to clients in the new office from the new distribution point. You need to create a boundary for the new office.
 Solution: Create an IP address range boundary from 10.5.1.1 to 10.5.255.255. Does this meet the goal?

- A. Yes
- B. No

Answer: A

NEW QUESTION 30

Note: This question is part of a series of questions that present the same scenario. Each question in the series contains a unique solution that might meet the stated goals. Some question sets might have more than one correct solution, while others might not have a correct solution.
 After you answer a question in this section, you will NOT be able to return to it. As a result, these questions will not appear in the review screen.
 Your company uses a network ID of 10.0.0.0/8.
 The company opens a new office that uses a network ID of 10.5.0.0/16. The office has three floors. Each floor has a VLAN. The network ID of each VLAN is 10.5.10.0/24, 10.5.20.0/24, and 10.5.30.0/24.
 You create a distribution point for the new office.
 You plan to distribute content to clients in the new office from the new distribution point. You need to create a boundary for the new office.
 Solution: Create an IP subnet boundary for 10.5.0.0/16. Does this meet the goal?

- A. Yes
- B. No

Answer: B

NEW QUESTION 35

Note: This question is part of a series of questions that use the same scenario. For your convenience, the scenario is repeated in each question. Each question presents a different goal and answer choices, but the text of the scenario is exactly the same in each question in this series.
 Start of repeated scenario.
 You work for a company named ADatum Corporation.
 The ADatum network contains an Active Directory domain named adatum.com.
 You have a partner company named Contoso, Ltd. The Contoso network contains an Active Directory domain named contoso.com.
 All the client computers at both companies run Windows 10.
 Each company has a deployment of System Center Configuration Manager (Current Branch).
 ADatum has sales and IT departments. ADatum has a collection for each department.
 Contoso has research, marketing, and human resources (HR) departments. Contoso has a collection for each department.
 ADatum purchases Contoso.
 You configure on-premises mobile device management (MDM) in adatum.com. You enroll the client computers in the IT department into on-premises MDM.
 You configure hybrid MDM in contoso.com. End of repeated scenario.
 You need to ensure that only managers at Contoso can enroll their computers into MDM. What should you do? To answer, select the appropriate options in the answer area. NOTE: Each correct selection is worth one point.

Tool to use:

the Active Directory Users and Computers console
 the Configuration Manager console
 the Microsoft Azure portal
 the Microsoft Intune portal

Object to create:

a device collection
 a distribution group
 a dynamic device group
 a dynamic user group
 a security group
 a user collection

Answer:

Explanation: References: <https://docs.microsoft.com/en-us/sccm/mdm/deploy-use/setup-hybrid-mdm>

NEW QUESTION 38

You have a deployment of System Center Configuration Manager (Current Branch) that has one distribution point. Configuration Manager has the boundaries defined as shown in the following table.

Boundary name	Network ID	Boundary group
Boundary1	172.16.1.0	BG1
Boundary2	172.16.8.0	BG2

The distribution point is associated to BG1 and BG2.

The PXE settings for the distribution point are shown in the PXE exhibit. (Click the Exhibit button.)

Distribution point Properties

Pull Distribution Point

General PXE Multicast Group Relationships Content Content Validation Boundary Groups Schedule Rate Limits

☒ Enable PXE support for clients
Windows Deployment Services will be installed if required

☒ Allow this distribution point to respond to incoming PXE requests

☐ Enable unknown computer support

☐ Require a password when computers use PXE

Password:

Confirm password:

User device affinity:

Network interfaces

☒ Respond to PXE requests on all network interfaces

☐ Respond to PXE requests on specific network interfaces

Specify the PXE server response delay (seconds):

OK Cancel Apply

The multicast settings for the distribution point are shown in the Multicast exhibit. (Click the Exhibit button.)

Distribution point Properties

Pull Distribution Point

General | PXE | **Multicast** | Group Relationships | Content | Content Validation | Boundary Groups | Schedule | Rate Limits

☒ Enable multicast to simultaneously send data to multiple clients
 Windows Deployment Services will be installed if required

Multicast Connection Account

☒ Use the computer account of this distribution point to connect to the primary site database
☐ Use another account

Multicast address settings

☒ Use IPv4 addresses within any range
☐ Use IPv4 addresses from the following range:

Start: End:

UDP port range for multicast:

Start: 64001 End: 65000

Client transfer rate: 100 Mbps
 Maximum clients: 100

☐ Enable scheduled multicast

Session start delay (minutes): 15
 Minimum session size (clients): 20

OK Cancel Apply

You configure an operating system deployment in Configuration Manager.

For each of the following statements, select Yes if the statement is true. Otherwise, select False. NOTE: Each correct selection is worth one point.

Statements	Yes	No
If you start three new computers on the 172.16.1.0 network, they will be deployed by using Multicast.	<input type="radio"/>	<input type="radio"/>
You can deploy an operating system to a new computer that has an IP address of 172.16.8.15 by using the operating system deployment.	<input type="radio"/>	<input type="radio"/>
You can deploy an operating system to an existing Configuration Manager client that has an IP address of 172.16.1.99 by using the operating system deployment.	<input type="radio"/>	<input type="radio"/>

Answer:

Explanation:

Statements	Yes	No
If you start three new computers on the 172.16.1.0 network, they will be deployed by using Multicast.	<input checked="" type="checkbox"/>	<input type="checkbox"/>
You can deploy an operating system to a new computer that has an IP address of 172.16.8.15 by using the operating system deployment.	<input checked="" type="checkbox"/>	<input type="checkbox"/>
You can deploy an operating system to an existing Configuration Manager client that has an IP address of 172.16.1.99 by using the operating system deployment.	<input checked="" type="checkbox"/>	<input type="checkbox"/>

NEW QUESTION 39

Your company has a main office and a branch office. The branch office connects to the main office by using a VPN over DSL connection. The branch office contains 500 client computers that run Windows 8.1. All the computers are on the same subnet. You plan to upgrade the operating system on the computers by using Configuration Manager. During the upgrade process, you will maintain the user state and the files. You need to recommend a solution to reduce the amount of WAN traffic during the operating system deployments. Which two components should you include in the recommendation? Each correct answer presents part of the solution. NOTE: Each correct selection is worth one point.

- A. a state migration point
- B. a distribution point
- C. a management point
- D. a cloud-based distribution point
- E. a cloud management gateway
- F. a fallback status point

Answer: BC

Explanation: References:

<https://docs.microsoft.com/en-us/sccm/core/servers/deploy/configure/install-and-configure-distribution-points>

NEW QUESTION 43

You have a deployment of System Center Configuration Manager (Current Branch). You configure hybrid mobile device management (MDM). You run WINVER on client computer named Computer1 as shown in the following exhibit.



You need to create a compliance policy that has a condition specifying a minimum version of the operating system. The condition must use the same operating system version as Computer1. Which version should you specify in the condition?

- A. 10.0.16299.15
- B. 10.0.1709
- C. 10.1709
- D. 10.1709.16299.15

Answer: A

Explanation: References: <https://docs.microsoft.com/en-us/intune/compliance-policy-create-windows>

NEW QUESTION 46

You have a deployment of System Center Configuration Manager (Current Branch). You configure hybrid mobile device management (MDM). You need to ensure that you can manage Apple iOS devices by using Configuration Manager. Which four actions should you perform in sequence? To answer, move the appropriate actions to the answer area and arrange them in the correct order.

Actions

Add an Apple Volume Purchase Program token to Configuration Manager.

Upload an Apple Push Notification (APN) certificate to Microsoft Intune.

Download sideloading keys.

Download an Apple Push Notification (APN) certificate.

Submit a request to the Apple Push Notification Certification Portal.

Create an Apple Push Notification (APN) certificate request.

Answer Area

<

>

↑

↓

Answer:

Explanation: References: <https://www.systemcenterdudes.com/enroll-ios-device-sccm/>

NEW QUESTION 51

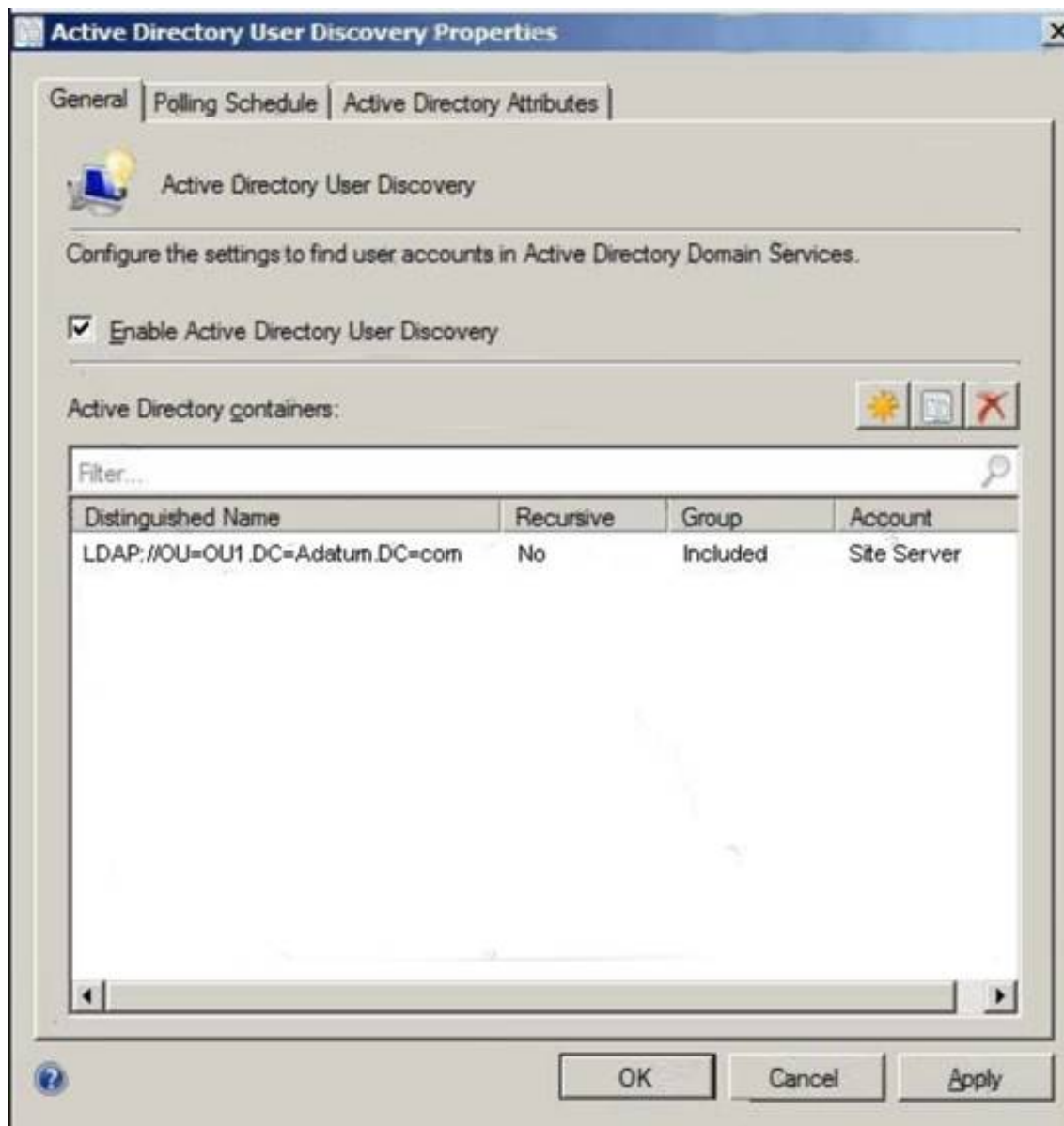
Your network contains as Active Directory forest named adatum.com. The forest has a deployment of System Center Configuration Manager (Current Branch). The adatum.com domain contains the organizational units (OUs) shown in the following table.

OU name	Parent
OU1	Adatum.com
OU2	Adatum.com
OU11	OU1

The adatum.com domain contains the groups shown in the following table.

Group Name	OU
Group 1	OU1
Group2	OU11

Active Directory User Discovery is configured as shown in the exhibit. (Click the Exhibit button.) Exhibit:



You perform the following actions:

- ▶ Create a user named User1 in OU1.
- ▶ Create a user named User2 in OU2 in OU2 and add User2 to Group2.
- ▶ Create a user named User3 in OU2 and add User3 to Group1.

For each of the following statements, select Yes if the statement is true. Otherwise, select False. NOTE: Each correct selection is worth one point.

Answer Area

Statements	Yes	No
Configuration Manager will discover User1.	<input type="radio"/>	<input type="radio"/>
Configuration Manager will discover User2.	<input type="radio"/>	<input type="radio"/>
Configuration Manager will discover User3.	<input type="radio"/>	<input type="radio"/>

Answer:

Explanation: References: <https://technet.microsoft.com/en-us/library/bb693489.aspx>

NEW QUESTION 53

You have a deployment of System Center Configuration Manager (Current Branch). You use the deployment to manage client computers that run Windows 7. You need to deploy a Microsoft Application Virtualization (App-V) package to the computers by using Configuration Manager. What should you do first?

- A. Configure the Enable App-V Client setting by using a Group Policy object (GPO).
- B. Deploy the App-V client to the computers.
- C. Install the App-V Sequencer on a reference computer.
- D. From the Configuration Manager console, create an App-V virtual environment.

Answer: B

NEW QUESTION 58

You install the System Center Configuration Manager client on a computer.

When you check the Configuration Manager console, the computer does not appear in the console. Other computers appear in the console.

You need to review the Configuration Manager logs for the computer. What should you use?

- A. the cmtrace.exe command
- B. the Configuration Manager console
- C. the statview.exe command
- D. the Event Viewer console

Answer: A

Explanation: References: <https://docs.microsoft.com/en-us/sccm/core/plan-design/hierarchy/log-files>

NEW QUESTION 63

You have a deployment of System Center Configuration Manager (Current Branch).

You need to configure the Configuration Manager clients to meet the following requirements:

- ▶ Manage Microsoft Office 365 updates.
- ▶ Configure the times at which updates can be applied.
- ▶ Allow unsigned Windows PowerShell scripts to be executed.

What should you use to meet each requirement? To answer, drag the appropriate settings to the correct requirements. Each setting may be used once, more than once, or not at all. You may need to drag the split bar between panes or scroll to view content.

NOTE: Each correct selection is worth one point.

Settings	Answer Area
Client Settings	Manage Office 365 updates: Setting
Collection properties	
Hierarchy Settings properties	Allow unsigned PowerShell scripts to be executed: Setting
Security scopes	
	Configure the times at which updates can be applied: Setting

Answer:

Explanation:

Settings	Answer Area
Client Settings	Manage Office 365 updates: Client Settings
Collection properties	
Hierarchy Settings properties	Allow unsigned PowerShell scripts to be executed: Security scopes
Security scopes	
	Configure the times at which updates can be applied: Client Settings

NEW QUESTION 64

Your network contains an Active Directory forest named adatum.com. The forest has a deployment of System Center Configuration Manager (Current Branch).

You create two users named User1 and User2 in adatum.com. You plan to delegate the following tasks:

- User1 must be able to create user collections.
- User2 must be able to import driver packages.

You need to add User1 and User2 to security roles. The solution must use the principle of least privilege. To which security role should you add each user? To answer, drag the appropriate roles to the correct users.

Each role may be used once, more than once, or not at all. You may need to drag the split bar between panes or scroll to view content.

NOTE: Each correct selection is worth one point.

Security Roles

Application Deployment Manager

Asset Manager

Company Resource Access Manager

Compliance Settings Manager

Operations Administrator

Operating System Deployment Manager

User1: Security role

User2: Security role

Answer:

Explanation:

Security Roles

Application Deployment Manager

Asset Manager

Company Resource Access Manager

Compliance Settings Manager

Operations Administrator

Operating System Deployment Manager

User1: Application Deployment Manager

User2: Operating System Deployment Manager

NEW QUESTION 67

Note: This question is part of a series of questions that present the same scenario. Each question in the series contains a unique solution that might meet the stated goals. Some question sets might have more than one correct solution, while others might not have a correct solution.

After you answer a question in this section, you will NOT be able to return to it. As a result, these questions will not appear in the review screen.

You have a deployment of System Center Configuration Manager (Current Branch). You configure hybrid mobile device management (MDM).

You have a support technician named User1. Your company purchases 300 Apple iPhones.

You need to ensure that User1 can enroll the iPhones.

Solution: From a web browser, you request an Enrollment Agent certificate from a certification authority (CA).

Does this meet the goal?

A. Yes

B. No

Answer: B

Explanation: References:

<https://docs.microsoft.com/en-us/sccm/mdm/deploy-use/enroll-devices-with-device-enrollment-manager>

NEW QUESTION 69

You have a deployment of System Center Configuration Manager (Current Branch).

You configure the Backup Site Server maintenance task to back up Configuration Manager to a local folder. You need to create a script to restart the Configuration Manager server after the backup completes.

How should you create the script? To answer, select the appropriate options in the answer area. NOTE: Each correct selection is worth one point.

Script file to create:

AfterBackup.bat
 ApplicationHost.config
 Backup.xml
 BackupTask.ps1

Script file location:

Program Files\Microsoft Configuration Manager\inboxes\schedule.box
 Program Files\Microsoft Configuration Manager\inboxes\smsbkup.box
 Program Files\Microsoft Configuration Manager\scripts
 Windows\WinSxS\Backup

Answer:

Explanation: References: <https://docs.microsoft.com/en-us/sccm/protect/understand/backup-and-recovery>

NEW QUESTION 74

Note: This question is part of a series of questions that present the same scenario. Each question in the series contains a unique solution that might meet the stated goals. Some question sets might have more than one correct solution, while others might not have a correct solution.

After you answer a question in this section, you will NOT be able to return to it. As a result, these questions will not appear in the review screen.

You have a deployment of System Center Configuration Manager (Current Branch). You configure hybrid mobile device management (MDM).

You enroll several Apple iOS devices and deploy compliance policies. One of the devices is marked as noncompliant.

You need to retrieve the logs from the device.

Solution: On the device, you open the Company Portal app, and then you manually synchronize. Does this meet the goal?

- A. Yes
- B. No

Answer: B

NEW QUESTION 75

Note: This question is part of a series of questions that present the same scenario. Each question in the series contains a unique solution that might meet the stated goals. Some question sets might have more than one correct solution, while others might not have a correct solution.

After you answer a question in this section, you will NOT be able to return to it. As a result, these questions will not appear in the review screen.

You have a deployment of System Center Configuration Manager (Current Branch). You deploy the first primary site server to your organization. Discovery is not configured. You need to deploy the Configuration Manager client to five client computers in a workgroup. Solution: You deploy the client by using a Group Policy software installation. Does this meet the goal?

- A. Yes
- B. No

Answer: B

NEW QUESTION 80

You have a deployment of System Center Configuration Manager (Current Branch) that contains a primary site named S01. S01 has the Software update point site system role installed on a server named Server01 and the Distribution point site system role installed on a server named Server02.

You need to configure when Configuration Manager can install updates on the site system servers. What should you configure?

- A. the Properties of the S01 site
- B. the Distribution point Properties of Server02
- C. the Software update point Properties of Server01
- D. the Software Update Point Component Properties of S01

Answer: A

Explanation: References: <https://docs.microsoft.com/en-us/sccm/sum/get-started/manage-settings-for-software-updates>

NEW QUESTION 81

You have a deployment of System Center Configuration Manager (Current Branch). Configuration Manager has the boundaries defined as shown in the following table.

Boundary name	Configuration	Type
Boundary1	Network: 192.168.128.0 Subnet mask: 255.255.0.0	IP subnet
Boundary2	Network: 172.16.128.0 Subnet mask: 255.255.255.0	IP subnet
Boundary3	172.16.10.15 to 172.16.10.100	IP address range
Boundary4	192.168.10.15 to 192.168.10.100	IP address range
Boundary5	fc07:45d4:5626:85b1	IPv6 prefix

Configuration Manager has the boundary groups defined as shown in the following table.

Boundary group name	Boundary
BG1	Boundary1, Boundary4
BG2	Boundary5
BG3	Boundary2, Boundary3

You install a new distribution point named DPI, and you add DPI to BG1 and BG3.

For each of the following statements, select. Yes if the statement is true. Otherwise, select No. NOTE: Each correct selection is worth one point.

Answer Area

Statements	Yes	No
A client computer that has an IPv4 address of 172.16.10.12 can use DP1.	<input type="radio"/>	<input type="radio"/>
A client computer that has an IPv4 address of 192.168.130.12 can use DP1.	<input type="radio"/>	<input type="radio"/>
A client computer that has only an IPv6 address can use DP1.	<input type="radio"/>	<input type="radio"/>

Answer:

Explanation:

Answer Area

Statements	Yes	No
A client computer that has an IPv4 address of 172.16.10.12 can use DP1.	<input type="radio"/>	<input checked="" type="radio"/>
A client computer that has an IPv4 address of 192.168.130.12 can use DP1.	<input checked="" type="radio"/>	<input type="radio"/>
A client computer that has only an IPv6 address can use DP1.	<input type="radio"/>	<input checked="" type="radio"/>

NEW QUESTION 85

You have a deployment of System Center Configuration Manager (Current Branch) that contains a collection named Restricted. Restricted contains only client computers that run Windows 10.

You need to ensure that only trusted executable files can run on the computers in the Restricted collection.

What should you do?

- A. Deploy custom Client Device Settings.
- B. Create a Windows Defender Application Control (WDAC) policy.
- C. Modify the Default Client Settings.
- D. Create a device compliancy policy.

Answer: B

Explanation: References:

<https://docs.microsoft.com/en-us/sccm/protect/deploy-use/use-device-guard-with-configuration-manager>

NEW QUESTION 86

You have a deployment of System Center Configuration Manager (Current Branch) that contains the servers shown in the following table.

Server name	Site system role
Server1	Management point
Server2	Distribution point
Server3	Enrollment point
Server4	Software update point

You need to configure the environment to ensure that operating systems can be deployed by using operating system deployment. On which server should you enable PXE support?

- A. Server1
- B. Server2
- C. Server3
- D. Server4

Answer: B

Explanation: References: <https://technet.microsoft.com/en-us/library/gg712266.aspx>

NEW QUESTION 87

You have a deployment of System Center Configuration Manager (Current Branch) that you use to manage devices on the corporate network. You need to ensure that you can deploy software to Configuration Manager clients on the Internet. What should you deploy?

- A. a cloud-based distribution point in Microsoft Azure and the Microsoft Operations Management Suite (OMS) connector
- B. a management point and a service connection point in a perimeter network.
- C. a cloud-based distribution point and a cloud management gateway in Microsoft Azure
- D. a cloud-based distribution point in Microsoft Azure and a Microsoft Intune subscription

Answer: C

Explanation: References: <https://docs.microsoft.com/en-us/sccm/core/clients/manage/cmgyplan-cloud-management-gateway>

NEW QUESTION 91

You have a deployment of System Center Configuration Manager (Current Branch). Configuration Manager includes the collections shown in the following table.

Collection name	Members
Collection1	Computer1,Computer2,
Collection2	Computer2,Computer3
Collection3	Computer3

Configuration Manager has the following antimalware policies defined as shown in the following table.

Policy name	Priority	Deployed to	Scheduled scan time
Default Client Antimalware Policy	10,000	Not applicable	02:00
Settings1	2	Collection1	04:00
Settings2	3	Collection1	12:00
Settings3	1	Collection2	Not applicable
Settings4	4	Collection3	Not applicable

When are the scheduled scan times for Computer1, Computer2, and Computer3? To answer, select the appropriate options in the answer area.
 NOTE: Each correct selection is worth one point.

Answer Area

Computer1:	<div>▼</div> <div>02.00</div> <div>04.00</div> <div>12.00</div> <div>Never</div>
Computer2:	<div>▼</div> <div>02.00</div> <div>04.00</div> <div>12.00</div> <div>Never</div>
Computer3:	<div>▼</div> <div>02.00</div> <div>04.00</div> <div>12.00</div> <div>Never</div>

Answer:

Explanation: References: <https://technet.microsoft.com/en-us/library/hh508785.aspx>

NEW QUESTION 92

You have a deployment of System Center Configuration Manager (Current Branch) that contains a single primary site. A server named MP01 is the only management point in the site. A server named DP01 is the only distribution point in the site.

You need to ensure that you can deploy operating systems over the network to bare-metal computers. Which two actions should you perform? Each correct answer presents part of the solution.

NOTE: Each correct selection is worth one point.

- A. Enable Wake On Lan in the firmware of the client computers.
- B. Integrate the Microsoft Deployment Toolkit (MDT) and Configuration Manager.
- C. Configure unknown computer support on DP01.
- D. Configure DP01 to accept PXE requests.
- E. Add the State migration point site system role to DP01.

Answer: CD

Explanation: References:

<https://docs.microsoft.com/en-us/sccm/osd/deploy-use/install-new-windows-version-new-computer-bare-metal> <https://docs.microsoft.com/en-us/sccm/osd/deploy-use/use-pxe-to-deploy-windows-over-the-network> <https://docs.microsoft.com/en-us/sccm/osd/get-started/prepare-for-unknown-computer-deployments>

NEW QUESTION 97

Note: This question is part of a series of questions that use the same scenario. For your convenience, the scenario is repeated in each question. Each question presents a different goal and answer choices, but the text of the scenario is exactly the same in each question in this series.

Start of repeated scenario.

You work for a company named ADatum Corporation.

The ADatum network contains an Active Directory domain named adatum.com.

You have a partner company named Contoso, Ltd. The Contoso network contains an Active Directory domain named adatum.com.

All the client computers at both companies run Windows 10.

Each company has a deployment of System Center Configuration Manager (Current Branch). ADatum has sales and IT departments. ADatum has a collection for each department.

Contoso has research, marketing, and human resources (HR) departments. Contoso has a collection for each department.

ADatum purchases Contoso.

You configure on-premises mobile device management (MDM) in adatum.com. You enroll the client computers in the IT department into on-premises MDM.

You configure hybrid MDM in contoso.com. End of repeated scenario.

You need to enroll the client computers in the sales department into MDM. What should you do on the sales department computers?

- A. Install the Configuration Manager client.
- B. Run the Add-Computer cmdlet.
- C. Use the Settings app to connect the computers to a work or school account.
- D. Install the Microsoft Intune software client.

Answer: C

Explanation: References: <https://docs.microsoft.com/en-us/sccm/mdm/deploy-use/user-enroll-devices-on-premises-mdm>

NEW QUESTION 100

You have a System Center Configuration Manager (Current Branch) hierarchy that contains a single primary server named cm01.contoso.corp. You have a Web Application Proxy that presents the management point and the distribution point to the Internet as sccm.contoso.com. You have a user who has a client computer that runs Windows 10. The user currently works at a customer site. The user has access to the Internet but cannot access the customer's corporate network. You discover that the Configuration Manager client on the computer has an issue. You need to reinstall the Configuration Manager client on the computer. Which command should you run? To answer, select the appropriate options in the answer area. NOTE: Each correct selection is worth one point.

Answer Area

<div> <div></div> <div>ccmsetup.exe</div> <div>ccmsetupcmd.exe</div> <div>client.msi</div> </div>	<div> <div></div> <div>/mp:sccm.contoso.com</div> <div>/noservice CCMHTTPSPORT=443</div> <div>DNSSUFFIX=contoso.com</div> <div>SMSSITECODE=AUTO</div> </div>	<div> <div></div> <div>/UsePKICert /noCRLCheck</div> </div>
---	--	---

Answer:

Explanation: References: <https://docs.microsoft.com/en-us/sccm/core/clients/deploy/about-client-installation-properties>

NEW QUESTION 104

You have offices in the United Kingdom and Sweden. You have a deployment of System Center Configuration Manager that you use to manage the client computers in the offices. All the managed computers run Windows 10. The computers in the United Kingdom office use the English (United Kingdom) en-GB language pack. The computers in the Sweden office use the Swedish (Sweden) sv-SE language pack. You need to create a servicing plan for Windows 10 in Configuration Manager to update the computers to the latest version of Windows 10. The solution must meet the following requirements:

Values	Answer Area
<div> <div><10></div> <div>>=10</div> </div>	<div>Required: <div>Value</div></div>
<div> <div>>10</div> <div>en-GB AND sv-SE</div> </div>	
<div> <div>en-GB OR sv-SE</div> <div>"en-GB, sv-SE"</div> </div>	<div>Title: <div>Value</div></div>
<div> <div>ten</div> </div>	

Answer:

Explanation: References: <https://docs.microsoft.com/en-us/sccm/osd/deploy-use/manage-windows-as-a-service>

NEW QUESTION 105

You have a deployment of System Center Configuration Manager (Current Branch). You configure hybrid mobile device management (MDM). Your company allows users to use their personal devices to access corporate data. A user named User1 has a personal tablet that runs Windows 10. The tablet is enrolled in Microsoft Intune. User1 leaves the company. You plan to perform a selective wipe of the tablet. What will be deleted from the tablet?

- A. all the apps that are installed from the Microsoft Store for Business
- B. all the files located in %ProgramData%\Package Cache
- C. all the user profiles
- D. all the files located in %USERPROFILE%\AppData\Roaming

Answer: A

Explanation: References: <https://docs.microsoft.com/en-us/sccm/mdm/deploy-use/wipe-lock-reset-devices>

NEW QUESTION 108

You have a deployment of System Center Configuration Manager (Current Branch). Your company opens a new office. All the client computers in the new office use IPv6 addresses only. The IPv6 address of one of the computers is 2001:3823:2c50:6a39:e976:b0eb:93f7:fb41. You need to configure an IPv6 boundary in Configuration Manager for the new office. What should you use to configure the boundary?

- A. 2001:3823:2c50:6a39
- B. ::93f7:fb41
- C. 2001:3823::
- D. e976:b0eb:93f7:fb41

Answer: A

Explanation: References:

<https://docs.microsoft.com/en-us/sccm/core/servers/deploy/configure/boundaries> <https://networklessons.com/ipv6/how-to-find-ipv6-prefix/>

NEW QUESTION 113

Note: This question is part of a series of questions that present the same scenario. Each question in the series contains a unique solution that might meet the stated goals. Some question sets might have more than one correct solution, while others might not have a correct solution.

After you answer a question in this section, you will NOT be able to return to it. As a result, these questions will not appear in the review screen.

You have a deployment of System Center Configuration Manager (Current Branch). You configure hybrid mobile device management (MDM).

You enroll several Apple iOS devices and deploy compliance policies. One of the devices is marked as noncompliant.

You need to retrieve the logs from the device.

Solution: You install the Apple Configurator tool on a Mac computer. You connect the device to the computer. From All Devices, you double-click the device to review and save the log file.

Does this meet the goal?

- A. Yes
- B. No

Answer: A

NEW QUESTION 118

You have a deployment of System Center Configuration Manager (Current Branch).

You need to back up the CD.Latest folder and the Configuration Manager database. The solution must meet the following requirements:

- ▶ Compress the backup of the Configuration Manager database.
- ▶ Ensure that the backups can be restored to a consistent state.

Which type of backups should you use? To answer, drag the appropriate options to the correct content types. Backup type may be used once, more than once, or not at all. You may need to drag the split bar between panes or scroll to view content.

NOTE: Each correct selection is worth one point.

Answer Area

Backup Types

A full database backup in Microsoft SQL Server

A maintenance task backup in Configuration Manager

A system state backup in Windows Server Backup

The CD.Latest folder:

Backup type

The Configuration Manager database:

Backup type

Answer:

Explanation: References: <https://docs.microsoft.com/en-us/sccm/protect/understand/backup-and-recovery>

NEW QUESTION 122

You have a deployment of System Center Configuration Manager (Current Branch).

You need to recommend a solution to manage and reduce the attack surface of applications used in your environment.

What should you include in the recommendation?

- A. Windows Defender Exploit Guard
- B. antimalware policies
- C. Windows Defender Advanced Threat Protection (ATP) policies
- D. compliance policies

Answer: A

NEW QUESTION 126

Note: This question is part of a series of questions that present the same scenario. Each question in the series contains a unique solution that might meet the stated goals. Some question sets might have more than one correct solution, while others might not have a correct solution.
After you answer a question in this section, you will NOT be able to return to it. As a result, these questions will not appear in the review screen.
You have a deployment of System Center Configuration Manager that collects the hardware inventory of Windows and Linux client computers.
You need to capture additional information about the hardware on the Linux computers. Solution: You create NOIDMIF files to add information to the client hardware inventory. Does this meet the goal?

- A. Yes
- B. No

Answer: B

NEW QUESTION 130

Note: This question is part of a series of questions that present the same scenario. Each question in the series contains a unique solution that might meet the stated goals. Some question sets might have more than one correct solution, while others might not have a correct solution.
After you answer a question in this section, you will NOT be able to return to it. As a result, these questions will not appear in the review screen.
You have a deployment of System Center Configuration Manager (Current Branch). You configure hybrid mobile device management (MDM).
You enroll several Apple iOS devices and deploy compliance policies. One of the devices is marked as noncompliant.
You need to retrieve the logs from the device.
Solution: You open the Company Portal app, shake the device, and then tap Send Diagnostic Report when the diagnostics alert appears.
Does this meet the goal?

- A. Yes
- B. No

Answer: B

NEW QUESTION 131

You have a deployment of System Center Configuration Manager (Current Branch).
You need to collect detailed usage data from devices. The usage data must be retained for three years. What should you deploy?

- A. A Microsoft Operations Management Suite (OMS) connector
- B. Software update point switching
- C. Server groups
- D. A Data Warehouse service point.

Answer: D

NEW QUESTION 135

Note: This question is part of a series of questions that present the same scenario. Each question in the series contains a unique solution that might meet the stated goals. Some question sets might have more than one correct solution, while others might not have a correct solution.
After you answer a question in this section, you will NOT be able to return to it. As a result, these questions will not appear in the review screen.
Your company uses a network ID of 10.0.0.0/8.
The company opens a new office that uses a network ID of 10.La0.0/16. The office has three floors. Each floor has a VLAN. The network ID of each VLAN is 10.5.10.0/24, 10.5.20.0/24, and 10.5.30.0/24.
You create a distribution point for the new office.
You plan to distribute content to clients in the new office from the new distribution point. You need to create a boundary for the new office.
Solution: Create an IP address range boundary from 10.5.1.1 to 10.5.255.255. Does this meet the goal?

- A. Yes
- B. No

Answer: B

NEW QUESTION 137

Note: This question is part of a series of questions that present the same scenario. Each question in the series contains a unique solution that might meet the stated goals. Some question sets might have more than one correct solution, while others might not have a correct solution.
After you answer a question in this section, you will NOT be able to return to it. As a result, these questions will not appear in the review screen.
You have a deployment of System Center Configuration Manager (Current Branch). You configure hybrid mobile device management (MDM).
You have a support technician named User1. Your company purchases 300 Apple iPhones.
You need to ensure that User1 can enroll the iPhones.
Solution: From Default Client Settings, you set an enrollment profile. Does this meet the goal?

- A. Yes
- B. No

Answer: B

Explanation: References:

<https://docs.microsoft.com/en-us/sccm/mdm/deploy-use/enroll-devices-with-device-enrollment-manager>

NEW QUESTION 140

You have a deployment of System Center Configuration Manager (Current Branch). You need to identify computers that have a specific registry value set in the registry.
Which three actions should you perform in sequence? To answer, move the appropriate actions from the list of actions to the answer area and arrange them in the correct order.

Actions

Deploy a package to a collection.

Create a configuration baseline.

Create a configuration item and add an assembly.

Create a package.

Deploy a configuration baseline to a collection.

Create a compliance policy.

Create a configuration item that has a registry value and a compliance rule.

Answer Area

Answer:

Explanation:

Actions

Deploy a package to a collection.

Create a configuration baseline.

Create a configuration item and add an assembly.

Create a package.

Deploy a configuration baseline to a collection.

Create a compliance policy.

Create a configuration item that has a registry value and a compliance rule.

Answer Area

Create a configuration baseline.

Create a configuration item that has a registry value and a compliance rule.

Deploy a configuration baseline to a collection.

NEW QUESTION 144

You have a collection of devices that run an application named SaleApp1. Every week, the sales manager publishes an updated price list to a file share. To use the new price list, the list must be copied to the application folder on the devices. You need to ensure that SalesApp1 receives a new price list weekly. What should you configure?

- A. a weekly maintenance window for the target collection
- B. a weekly schedule for the Update Application Available Targeting maintenance task
- C. a weekly content validation schedule on the distribution point
- D. a package that has a weekly recurrence schedule

Answer: D

NEW QUESTION 147

Note: This question is part of a series of questions that present the same scenario. Each question in the series contains a unique solution that might meet the stated goals. Some question sets might have more than one correct solution, while others might not have a correct solution. After you answer a question in this section, you will NOT be able to return to it. As a result, these questions will not appear in the review screen. You deploy the first primary site server to your organization. Discovery is not configured. You need to deploy the Configuration Manager client to five client computers in a workgroup. Solution: You manually install the client on the computers. Does this meet the goal?

- A. Yes
- B. No

Answer: A

Explanation: References: <https://docs.microsoft.com/en-us/sccm/core/clients/deploy/deploy-clients-to-windows-computers>

NEW QUESTION 150

You deploy Microsoft Office 365 ProPlus by using Configuration Manager. You need to use Configuration Manager to update Office 365 ProPlus as soon as possible. Which three actions should you perform in sequence? To answer, move the appropriate actions from the list of actions to the answer area and arrange them in the correct order.

Actions	Answer Area
Create an Office 2016 Deployment Toolkit (ODT) configuration file	
Set the OfficeMgmtCOM attribute to True in Configuration.xml	
Add the Office 365 updates to a software update group	
Install the Windows Server Update Services (WSUS) administration console on the same system as the Office 2016 Deployment Tool (ODT)	
Configure the software update point to include Office 365 Client Update	
Synchronize updates	

Answer:

Explanation: <https://docs.microsoft.com/en-us/deployoffice/manage-updates-to-office-365-proplus-with-system-center-config>

NEW QUESTION 155

You have a deployment of System Center Configuration Manager (Current Branch) that has a management point and a distribution point. You have 1,000 Configuration Manager clients that run Windows 10. You open the Windows 10 Servicing dashboard and discover that no data appears. You need to ensure that servicing data is available on the dashboard. What should you do?

- A. Configure a software inventory.
- B. Configure a hardware inventory.
- C. Add a reporting services point and configure the report options.
- D. Add a service connection point and a software update point.

Answer: D

Explanation: References: <https://docs.microsoft.com/en-us/sccm/osd/deploy-use/manage-windows-as-a-service>

NEW QUESTION 160

Your company has a main office and a branch office. You have a deployment of System Center Configuration Manager (Current Branch). The main office has a software update point. Currently, all client computers receive Microsoft updates from the main office. You need to ensure that the computers in the branch office receive updates from a local server. The solution must meet the following requirements:

- ▶ Ensure that the updates are managed by using Configuration Manager.
- ▶ Ensure that the computers in the branch office scan for updates against a local catalog. What should you deploy to the branch office?

- A. a software update point, a service connection point, and an Application Catalog website point
- B. a software update point, a distribution point, and a reporting services point
- C. Windows Server Update Services (WSUS), a service connection point, and a management point
- D. Windows Server Update Services (WSUS), a software update point, and a distribution point

Answer: D

NEW QUESTION 164

You have a deployment of System Center Configuration Manager (Current Branch). You add the cloud management gateway connector point to the deployment. Which site system role can be configured to receive the traffic from the cloud management gateway?

- A. Software update point
- B. Asset Intelligence synchronization point
- C. Service connection point
- D. Distribution point

Answer: A

Explanation: <https://www.systemcenterdudes.com/how-to-setup-an-sccm-cloud-management-gateway/>

NEW QUESTION 165

You have a deployment of System Center Configuration Manager (Current Branch).

You deploy several Microsoft Store for Business apps to client computers by using Configuration Manager. You purchase a new Microsoft Store for Business app named App1. App1 is licensed for offline use.

You need to ensure that you can deploy App1 immediately by using Configuration Manager. What should you do?

- A. From the Configuration Manager console, synchronize the Windows Store for Business.
- B. From the Microsoft Azure portal, add App1 to Azure Active Directory.
- C. From the Configuration Manager console, run the Azure Services Wizard.
- D. From Microsoft Intune in the Microsoft Azure portal, add App1 to Intune.

Answer: A

Explanation: References: <https://www.petervanderwoude.nl/post/windows-store-for-business-synchronized-with-configmgr/>

NEW QUESTION 168

You have a deployment of System Center Configuration Manager (Current Branch).

The software updates available in Configuration Manager are shown in the following table.

Update title	Product	Required
Update for Windows 10 (KB3125217)	Windows 10 LTSC, Windows 10	3
Security Update for Adobe Flash Player for Windows 10 (KB4014329)	Windows 10 LTSC, Windows 10	5
Definition Update for Windows Defender - KB2267602 (Definition 1.239.999.0)	Windows Default	10
Update for Windows 10 (KB3173427)	Windows 10 LTSC, Windows 10	0

You create the automatic deployment rules (ADRs) as shown in the following table.

ADR name	Software update search criteria	Deployment package to create
ADR1	Required : > 2 Title:- Adobe	Package1
ADR2	Product: "Windows 10" Title: update	Package1

You ran ADR1 and ADR2.

How many updates are in Package1 and Package2? To answer, select the appropriate options in the answer area.

NOTE: Each correct selection is worth one point.

Answer Area

Number of software updates in Package1:

▼

0

1

2

3

4

Number of software updates in Package2:

▼

0

1

2

3

4

Answer:

Explanation:

Answer Area

Number of software updates in Package1:

0
1
2
3
4

Number of software updates in Package2:

0
1
2
3
4

NEW QUESTION 171

You have a deployment of System Center Configuration Manager (Current Branch) that contains a single primary server named CM01. CM01 is configured as a distribution point.

The main office of your company has multiple floors. Each floor has a VLAN and a subnet. A DHCP server named DC01 currently hosts all the DHCP scopes.

You need to ensure that you can use Configuration Manager to deploy operating systems to the client computers on each floor by using the PXE.

Which two actions should you perform? Each correct answer presents part of the solution. NOTE: Each correct selection is worth one point.

- A. Configure option 60 for each DHCP scope.
- B. Use the Configuration Manager console to distribute the boot image to CM01.
- C. Add the IP address of CM01 to the IP Helper of each VLAN.
- D. Copy the RemoteInstall folder to CM01.

Answer: CD

NEW QUESTION 173

You have a deployment of System Center Configuration Manager (Current Branch). The domain contains the users shown in the following table.

User name	Members of
Account1	Domain Users
Account2	Help Desk Users
Account3	Enterprise Admins
Account4	Support Techs

Support Techs is a member of the Administrators group on each client computer. Help Desk Users is a member of the Power Users group on each client computer.

You need to deploy Configuration Manager agents by using a client push installation. The solution must use the principle of least privilege.

Which account should you configure as the client push installation account?

- A. Account1
- B. Account2
- C. Account3
- D. Account4

Answer: B

NEW QUESTION 177

Note: This question is part of a series of questions that use the same scenario. For your convenience, the scenario is repeated in each question. Each question presents a different goal and answer choices, but the text of the scenario is exactly the same in each question in this series.

Start of repeated scenario.

Your network contains an Active directory forest named adatum.com.

All client computers run Windows 10 Enterprise. All the computers are named by using the name of their respective department and an incremental three-digit number. For example, the first computer in the sales department is named Sales001.

Several managers use tablets that run Windows 10 and have 3 GB of RAM. All other client computers have at least 8 GB RAM.

Adatum.com is synchronized to Microsoft Azure Active Directory. Your company implements the Microsoft Store for Business.

You have a deployment of System Center Configuration Manager (Current Branch) that has discovery configured. All the client computers have the Configuration Manager client installed.

The company uses the applications shown in the following table.

Application Name	Description
App1	A Microsoft Application Virtualization (APP-V) virtual application
App2	An app that the company purchased from the Microsoft Store for Business and is licensed for offline use
App3	A 64-bit application that is deployed to all the client computers
SalesAppLite	An application used by users in the sale department on computers that have 3 GB of Ram or less
SalesAppFull	An application used by users in the sale department on computers that have more than 3 GB of Ram.

The company identifies the following requirements for software deployments:

- ▶ View the Upgrade Readiness data of all the client computers.
- ▶ Deploy App1 to the client computers in the marketing department.
- ▶ Deploy App2 to the client computers in the human resources (HR) department.
- ▶ Monitor the usage of App3.
- ▶ Deploy SalesAppLite to sales department computers that have 3 GB of RAM or less.
- ▶ Deploy SalesAppFull to sales department computers that have more than 3 GB of RAM.

You create a cloud-based distribution point that has a public name of d1594d4527614a09b934d470. End of repeated scenario.

You need to create the DNS record in adatum.com for the cloud-based distribution point. What should you configure? To answer, select the appropriate options in the answer area. NOTE: Each correct selection is worth one point.

Answer Area

Record type:

Alias(CNAME)
Host (A or AAAA)
Host information (HINFO)
Service location (SRV)
Well known services (WKS)

▼

Name to reference:

d1594d4527614a09b934d470.azure.com
d1594d4527614a09b934d470.cloudapp.net
d1594d4527614a09b934d470.core.windows.net
d1594d4527614a09b934d470.manage.microsoft.com
d1594d4527614a09b934d470.onmicrosoft.com

▼

Answer:

Explanation: References:

<https://docs.microsoft.com/en-us/sccm/core/servers/deploy/configure/install-cloud-based-distribution-points-in->

NEW QUESTION 178

You have a deployment of System Center Configuration Manager (Current Branch). Hardware inventory is enabled for all Configuration Manager clients.

You create a device collection named Collection1..

You need to include Trusted Platform Module (TPM) information in the hardware inventory of the devices in Collection1.

What should you configure in Configuration Manager?

- A. a configuration baseline
- B. the Client Device Settings
- C. hardware requirements
- D. a compliance policy

Answer: C

NEW QUESTION 182

You have a deployment of System Center Configuration Manager (Current Branch). You manage 100 client computers that run Windows 10. You purchase new computers that will replace the existing computers. You need to perform a side-by-side migration of the computers. Which four actions should you perform in sequence? To answer, move the appropriate actions from the list of actions to the answer area and arrange them in the correct order.

NOTE: More than one order of answer choices is correct. You will receive credit for any of the correct orders you select.

Actions	Answer Area
Create computer associations	
Capture the user data	
Deploy the task sequence and re-store the user data	
Create an in-place upgrade task sequence	
Create an existing image package task sequence	
Update the boot image	

Answer:

Explanation: References:

<https://docs.microsoft.com/en-us/sccm/osd/get-started/manage-boot-images>

<https://docs.microsoft.com/en-us/sccm/osd/deploy-use/create-a-task-sequence-to-install-an-operating-system>

NEW QUESTION 184

Your company has offices in New York and London. All client computers run Windows 10. You have a deployment of System Center Configuration Manager (Current Branch) that you use to manage the computers. The company has the applications shown in the following table.

Application Name	Description
App1	Installed by using an Windows Installer (MSI) package
App2	Installed by using an Windows Installer (MSI) package and dependent on App1
App3	Installed by using an executable file named Setup.exe

You need to deploy the applications to meet the following requirements:

- ▶ Deploy App2 to all the computers in the New York office.
- ▶ Deploy App3 to all the computers in the London office.
- ▶ Minimize administrative effort.

What should you create in Configuration Manager for each deployment? To answer, drag the appropriate options to the correct applications. Each option may be used once, more than once, or not at all. You may need to drag the split bar between panes or scroll to view content.

NOTE: Each correct selection is worth one point.

Options	Answer Area
an application	
a deployment package	App2: Option
a package	App3: Option
a software update group	

Answer:

Explanation: References: <https://docs.microsoft.com/en-us/sccm/apps/deploy-use/create-applications> <https://docs.microsoft.com/en-us/sccm/apps/deploy-use/packages-and-programs>

NEW QUESTION 188

You have a deployment of System Center Configuration Manager (Current Branch). You have the servers shown in the following table.

Server name	Site system role	
CM01	Primary Site Server Management Point	Windows Server 2012 R2
CM02	Distributuion point	Windows Server 2012 R2

You have one subnet that contains all the servers and several subnets that contain client computers. A firewall restricts network traffic to the server subnet. You install a new server named CM03 that runs Windows Server 2016. You install Windows Server Update Services (WSUS) on CM03 by using the default options. You configure CM03 as the software update point. You need to ensure that the client computers can access the software update point. Which port should you open on the firewall?

- A. 80
- B. 443
- C. 8080
- D. 8530

Answer: A

Explanation: References: https://technet.microsoft.com/en-us/library/hh427328.aspx#BKMK_PortsSUP-WSUS

NEW QUESTION 190

You have a deployment of System Center Configuration Manager (Current Branch). You use Configuration Manager to deploy Windows 10.

You discover that newly deployed images of Windows 10 are missing several Windows 10 updates.

When you attempt to deploy the updates by using the Schedule Updates Wizard, the process fails, and you receive the following error message: "Failed to apply one or more updates."

Which log file should you view to get additional information about the failure?

- A. ScanAgent.log
- B. UpdatesHandler.log
- C. OfflineServicingMgr.log
- D. UpdatesDeployment.log
- E. WUAHandler.log

Answer: C

Explanation: References: <https://technet.microsoft.com/en-us/library/hh427342.aspx>

NEW QUESTION 191

Note: This question is part of a series of questions that present the same scenario. Each question in the series contains a unique solution that might meet the stated goals. Some question sets might have more than one correct solution, while others might not have a correct solution.

After you answer a question in this section, you will NOT be able to return to it. As a result, these questions will not appear in the review screen.

You deploy the first primary site server to your organization. Discovery is not configured. You need to deploy the Configuration Manager client to five client computers in a workgroup. Solution: You deploy the client by using a Group Policy installation.

Does this meet the goal?

- A. Yes
- B. No

Answer: B

Explanation: References: <https://docs.microsoft.com/en-us/sccm/core/clients/deploy/deploy-clients-to-windows-computers>

NEW QUESTION 193

You have a deployment of System Center Configuration Manager (Current Branch). You have the collections shown in the following table.

Collection name	Members
Collection1	Computer1,Computer2,Computer3
Collection2	Computer1,Computer4,Computer6
Collection3	Computer2,Computer5,Computer7

You create a new collection that has the following configurations:

- Collection name: Collection4

- ▶ Limiting collection: Collection1
- ▶ Include Collections rule: Collection2
- ▶ Exclude Collections rule: Collection3

What will Collection4 contain?

- A. Computer1, Computer2, and Computer3 only
- B. Computer1, Computer4, and Computer6 only
- C. Computer1 only
- D. Computer1, Computer2, Computer3, Computer4, and Computer6

Answer: D

Explanation: References: <https://technet.microsoft.com/en-us/library/gg712295.aspx>

NEW QUESTION 195

Your network contains an Active Directory forest named adatum.com that has an enterprise certification authority (CA) named CA1. The certificate revocation list (CRL) is published to Active Directory and to a website.

You deploy on-premises mobile device management (MDM) by using System Center Configuration Manager (Current Branch). The Configuration Manager site systems use certificates issued by CA1. You have the devices shown in the following table.

Device name	Operating system	Member of
Device1	Windows 8.1 Enterprise	Adatum.com
Device2	Windows 10 Pro	A workgroup

You need to enroll Device1 and Device2 to the on-premises MDM.

What should you do before you can enroll each device? To answer, select the appropriate options in the answer area.

NOTE: Each correct selection is worth one point.

Device1:

<input type="checkbox"/> Add CA1 as a trusted root CA <input type="checkbox"/> Request a certificate from CA1 <input type="checkbox"/> Upgrade the operating system <input type="checkbox"/> Install a Configuration Manager agent

Device2:

<input type="checkbox"/> Add CA1 as a trusted root CA <input type="checkbox"/> Request a certificate from CA1 <input type="checkbox"/> Upgrade the operating system <input type="checkbox"/> Install a Configuration Manager agent

Answer:

Explanation: https://docs.microsoft.com/en-us/sccm/mdm/deploy-use/user-enroll-devices-on-premises-mdm#bkmk_enrollDes <https://docs.microsoft.com/en-us/sccm/mdm/get-started/set-up-device-enrollment-on-premises-mdm>

NEW QUESTION 198

You deploy the System Center Configuration Manager client to all domain-joined computers that run Windows.

From Resource Explorer, you view the hardware and software inventory information of the computers. When you run the Hardware 07A – USB Devices by Manufacturer report, the report does not produce any results.

What should you do to ensure that the report contains results?

- A. Enable Asset Intelligence hardware inventory reporting classes.
- B. Enable software metering on the clients.
- C. Configure the Summarize Installed Software Data maintenance task.
- D. Configure an Asset Intelligence synchronization point.

Answer: A

Explanation: References:
<https://docs.microsoft.com/en-us/sccm/core/clients/manage/asset-intelligence/introduction-to-asset-intelligence> <https://docs.microsoft.com/en-us/sccm/core/clients/manage/asset-intelligence/configuring-asset-intelligence>

NEW QUESTION 202

Note: This question is part of a series of questions that present the same scenario. Each question in the series contains a unique solution that might meet the stated goals. Some question sets might have more than one correct solution, while others might not have a correct solution.

After you answer a question in this section, you will NOT be able to return to it. As a result, these questions will not appear in the review screen.

You have a deployment of System Center Configuration Manager (Current Branch). You configure a cloud management gateway for Configuration Manager.

You have a client computer that is currently on the corporate network.

You need to force the computer to get the location of the cloud management gateway immediately. Solution: You run the Get-cloudDistributionPoint cmdlet.

Does this meet the goal?

- A. Yes
- B. No

Answer: B

NEW QUESTION 204

You have a deployment of System Center Configuration Manager (Current Branch).

You need to ensure that help desk users can use the Configuration Manager console to remotely control Configuration Manager clients.

Which two actions should you perform? Each correct answer presents part of the solution. NOTE: Each correct selection is worth one point.

- A. Add the help desk users to the local Administrators group on each client computer.
- B. Enable Remote Desktop on the client computers.
- C. Configure a client settings policy.
- D. Allow connections to TCP port 2701 on the client computers.
- E. Allow connections to TCP port 3389 on the client computers.

Answer: CE

Explanation: References:

<https://docs.microsoft.com/en-us/sccm/core/clients/manage/remote-control/configuring-remote-control> <https://technet.microsoft.com/en-us/library/bb632618.aspx>

NEW QUESTION 208

You have a deployment of System Center Configuration Manager (Current Branch). All the users at your company access their email by using Microsoft Exchange Online.

You need to prevent the users from connecting to their email from a jailbroken or rooted device. Which two items should you deploy? Each correct answer presents part of the solution.

NOTE: Each correct selection is worth one point.

- A. a conditional access policy
- B. a compliance policy
- C. custom Client Device Settings
- D. an email profile

Answer: AB

NEW QUESTION 209

.....

THANKS FOR TRYING THE DEMO OF OUR PRODUCT

Visit Our Site to Purchase the Full Set of Actual 70-703 Exam Questions With Answers.

We Also Provide Practice Exam Software That Simulates Real Exam Environment And Has Many Self-Assessment Features. Order the 70-703 Product From:

<https://www.2passeasy.com/dumps/70-703/>

Money Back Guarantee

70-703 Practice Exam Features:

- * 70-703 Questions and Answers Updated Frequently
- * 70-703 Practice Questions Verified by Expert Senior Certified Staff
- * 70-703 Most Realistic Questions that Guarantee you a Pass on Your FirstTry
- * 70-703 Practice Test Questions in Multiple Choice Formats and Updatesfor 1 Year