

## 1Y0-402 Dumps

# Citrix XenApp and XenDesktop 7.15 Assessment, Design, and Advanced Configurations

<https://www.certleader.com/1Y0-402-dumps.html>



## NEW QUESTION 1

Reduce costs

Answer:

## NEW QUESTION 2

Simplify management

Later in the design process, the architect documents the design decisions shown in the Exhibit (only some are shown).

Click the Exhibit button to view the design decisions.

Design Topic	Design Decision
Authentication Methods	<ul style="list-style-type: none"> <li>Internal users on managed devices: Smart card authentication</li> <li>External users on BYOD devices: LDAP and RADIUS</li> </ul>
Images	<ul style="list-style-type: none"> <li>Windows Server 2012 R2 <ul style="list-style-type: none"> <li>Provisioning Method: Provisioning Services</li> <li>FlexCast model: Published apps</li> </ul> </li> <li>Windows 10 <ul style="list-style-type: none"> <li>Provisioning Method: Provisioning Services</li> <li>FlexCast model: Hosted VDI (random, non-persistent)</li> </ul> </li> </ul>
Citrix Policies	<ul style="list-style-type: none"> <li>Policies that will be applied to all Virtual Delivery Agent machines: <ul style="list-style-type: none"> <li>Client drive redirection: Enabled</li> <li>Client fixed drives: Allowed</li> <li>Client printer redirection: Prohibited</li> <li>Client USB device redirection: Prohibited</li> <li>Clipboard redirection: Allowed (text only)</li> </ul> </li> </ul>
Profiles	<ul style="list-style-type: none"> <li>Citrix Profile Management will be used for all Virtual Delivery Agent machines.</li> </ul>

During the quality assurance review, the architect observes that one of these design decisions does NOT align with the business driver priorities. Which design decision should be changed to match the prioritization of the business drivers?

- A. Images
- B. Profiles
- C. Authentication Methods
- D. Citrix Policies

Answer: A

**Explanation:** 2. Scenario: A Citrix Architect needs to design a new XenApp and XenDesktop environment.

Click the Exhibit button to view information collected by the architect during the Resource Layer discussions.

Category	Detail
Active Directory Permissions	Only the Active Directory (AD) team has domain administrator permissions, but the Citrix Administrative team is provided with delegated administrative access to the Citrix dedicated OUs.
User Profile Type	Citrix Profile Management will be used.
Required Policies	Citrix Administrators are permitted to use the Block Inheritance feature for the Citrix dedicated OU, as long as required corporate policy settings are manually re-applied to the Virtual Delivery Agent machines. The Loopback Policy setting can be applied in Merge mode.
Security Considerations	The Virtual Delivery Agent machines should receive additional lockdown settings that are NOT currently being applied elsewhere in the environment.
Other Requirements	The Active Directory team would like to centralize the management of policy settings as long as other requirements are met.

Based on the requirements, the Citrix Administrative team should use \_\_\_\_ to manage Citrix policies and \_\_\_\_ to manage Microsoft settings. (Choose the correct option to complete the sentence.)

- A. Citrix Studio; Workspace Environment Manager
- B. Active Directory Group Policy Objects; Active Directory Group Policy Objects
- C. Citrix Studio; Local Policies
- D. Active Directory Group Policy Objects; Workspace Environment Manager
- E. Citrix Studio; Active Directory Group Policy Objects

3. Scenario: A Citrix Architect needs to design a new XenApp and XenDesktop environment. The customer previously installed all applications locally on managed laptops and desktops but is willing to evaluate other application delivery methods as part of the new deployment. The environment will be standardized on Windows 10 and Windows Server 2016 for the Virtual Delivery Agent (VDA) machines.

As part of an application analysis performed earlier in the project, the information in the Exhibit was collected regarding one of the required applications.

Click the Exhibit button to view the information.

Category	Detail
Application Name	Workspace CRM Pro
Description	Customer Relationship Management application - Users can view and edit information about current customers and sales leads.
Usage	This application will be used by the sales department.
OS Compatibility	The application is compatible with the target operating systems.
Special Considerations	The sales team must access the application from laptops, tablets, and mobile devices.

Additionally, the customer has the following objectives:

- ▶ Minimize the amount of additional infrastructure components.
- ▶ Minimize the server hardware required.

How should the architect install the application?

- A. On an Application Layer using Citrix App Layering, be included in a layered image, and accessed through a virtual desktop session
- B. Stream it to a VDA machine using Microsoft App-V and accessed through a virtual desktop session
- C. Directly on a Server OS VDA machine and accessed from the endpoint as a published application
- D. Directly on a VDA machine image and accessed through a virtual desktop session
- E. Directly on endpoint devices and included in a virtual desktop session using the Local App Access feature

4. Scenario: A Citrix Architect needs to implement XenApp and XenDesktop. Based on the assessment and early stages of the design, the architect has identified the requirements as shown in the Exhibit.

Click the Exhibit button to view the requirements.

Requirement	Detail
Number of users	50
Environment	Proof of Concept (POC)
Redundancy	NOT required
Administrative Team	One IT administrator
Level of Performance	High
Image Management	Provisioning Services, non-persistent
Additional considerations	Should NOT impact production infrastructure

Which tier of storage should the architect consider implementing, based on the requirements in the Exhibit?

- A. DAS
- B. Local
- C. SAN
- D. NAS

### NEW QUESTION 3

A Citrix Architect needs to conduct a capabilities assessment for an organization that wants to design and build a new XenApp and XenDesktop environment.

Which four capabilities will directly influence whether the existing Citrix administrative team will have the capacity to support the new environment? (Choose four.)

- A. Network architecture
- B. Current backup solutions
- C. Users and applications
- D. Existing XenApp and XenDesktop environments
- E. Training and certifications of support staff and users
- F. Current storage solutions
- G. Image management processes

**Answer:** ACDF

### NEW QUESTION 4

Scenario: A Citrix Architect is designing a XenApp and XenDesktop environment and needs to design machine catalogs and Delivery Groups. Users should only be able to access their assigned resources.

Click on the Exhibit button to view the design requirements.



User Group	Assigned FlexCast Model	Image	Pre-launch Required	Power Management	Applications	Application Delivery
Graphic Designers	Hosted Apps	Windows Server 2016 image	No	Scheduled to restart every weekend after business hours	Photo editing application	Directly installed in the image
QA Testers	Hosted Apps	Windows Server 2016 image	No	Scheduled to restart every weekend after business hours	Engineering application-QA version	App-V
Human Resources	Hosted Apps	Windows Server 2016 image	No	Scheduled to restart every weekend after business hours	Business productivity suite	Directly installed in the image
Sales Engineers	Hosted Apps	Windows Server 2016 image	No	Scheduled to restart every weekend after business hours	Engineering application	App-V

What is the appropriate design using the minimum number of machine catalogs and Delivery Groups, based on the requirements in the Exhibit?

- A. 1 machine catalog, 2 Delivery Groups, and no tagging
- B. 2 machine catalogs, 3 Delivery Groups, and tagging for the machine hosting the Engineering application- QA version
- C. 3 machine catalogs, 4 Delivery Groups, and no tagging
- D. 1 machine catalog, 1 Delivery Group, and tagging for the machine hosting the Engineering application - QA version

**Answer: A**

#### NEW QUESTION 5

Scenario: A Citrix Architect needs to design a new XenApp and XenDesktop environment. While designing Universal Print server (UPS) for the customer, the architect is asked to ensure that the UPS design can handle 500 simultaneous print jobs per minute.

What must the architect deploy to support the load estimated by the customer?

- A. Two UPS servers and configure UPS for load balancing policy
- B. Ten UPS servers and configure UPS for load balancing policy
- C. Five UPS servers and configure NetScaler load balancing
- D. Two UPS servers and configure NetScaler load balancing
- E. Five UPS servers and configure UPS for load balancing policy
- F. Ten UPS servers and configure NetScaler load balancing

**Answer: E**

#### NEW QUESTION 6

Scenario: A Citrix Architect needs to manage the disaster recovery process for a XenApp and XenDesktop environment. The environment currently consists of an active datacenter which is typically accessed by users and a disaster recovery (DR) datacenter which would be used in the event that a disaster impacts the primary datacenter. The organization has made it a priority to minimize the loss of data when failing over between datacenters and has begun planning for an event in which the environment must fail over from the primary datacenter to the DR datacenter.

What is the appropriate sequence of steps that the architect should follow after getting management approval to complete the process in case of such an event?

- A. Block access to primary datacenter, complete replication, terminate/drain existing sessions, reverse direction of replication, enable access in DR datacenter
- B. Block access to primary datacenter, terminate/drain existing sessions, complete replication, reverse direction of replication, enable access in DR datacenter
- C. Terminate/drain existing sessions, complete replication, block access to primary datacenter, enable access in DR datacenter, reverse direction of replication
- D. Complete replication, terminate/drain existing sessions, block access to primary datacenter, reverse direction of replication, enable access in DR datacenter
- E. Complete replication; block access to primary datacenter, terminate/drain existing sessions, enable access in DR datacenter, reverse direction of replication
- F. Terminate/drain existing sessions; block access to primary datacenter, complete replication, reverse direction of replication, enable access in DR datacenter

**Answer: D**

#### NEW QUESTION 7

Scenario: A Citrix Architect needs to design a new XenApp and XenDesktop environment.

The architect has identified the access requirements listed in the Exhibit. Click the Exhibit button to view the requirements.

User Groups	Endpoint	Authentication	Receiver Type	Deploy Receiver Client	Resource Filtering	Subscriptions	External Access Required
Accountants	Corporate-owned	Smart Card	Receiver 4.10	No	No	Enabled	No
Executives	BYOD	Username & Password	HTML5	-	No	Disabled	No
Graphic Designers	Mac BYOD	Username & Password	MAC Receiver 4.10	Yes	No	Enabled	No
Customer Service	Corporate-owned	Anonymous Access	Receiver 4.10	No	No	Disabled	Yes
Sales	BYOD	Username & Password	Receiver 4.10	Yes	No	Disabled	No

- Users must be presented only with the specific authentication method.
- Users will be using a mix of both native Receiver and Receiver for Web.
- NetScaler authentication policies will control remote access.

A single store has already been configured with the following settings, every other setting has been kept as a default.

- ▶ Username/Password authentication
- ▶ No resource filtering
- ▶ NetScaler Gateway is configured for authentication
- ▶ No IIS redirection
- ▶ Deploy Receiver 4.10 installer

The architect needs to evaluate whether the current store, which cannot be changed, meets the requirements of the user groups and needs to determine how many additional stores are required.

How many additional StoreFront stores does the architect need to support the requirements shown in the Exhibit?

- A. 1
- B. 4
- C. 3
- D. 5
- E. 2

**Answer: E**

#### NEW QUESTION 8

Scenario: A Citrix Architect needs to design a new XenDesktop environment for a client who does NOT currently have a Citrix environment. The project scope has NOT yet been determined, and the architect is about to start the Assess phase of the project.

In which order should the architect complete the four tasks of a typical assessment when following the Citrix methodology?

- A. Define the organization, Define the user groups, Define the applications, Define the project team.
- B. Define the user groups, Define the applications, Define the organization, Define the project team.
- C. Define the project team, Define the organization, Define the user groups, Define the applications.
- D. Define the organization, Define the project team, Define the user groups, Define the applications.

**Answer: D**

#### NEW QUESTION 9

Scenario: A Citrix Architect is investigating a recent change that is impacting system performance of the Provisioning Services farm. However, no actions have been recorded in the Audit Trail.

Which two processes are preventing Provisioning Services auditing from recording the actions? (Choose two.)

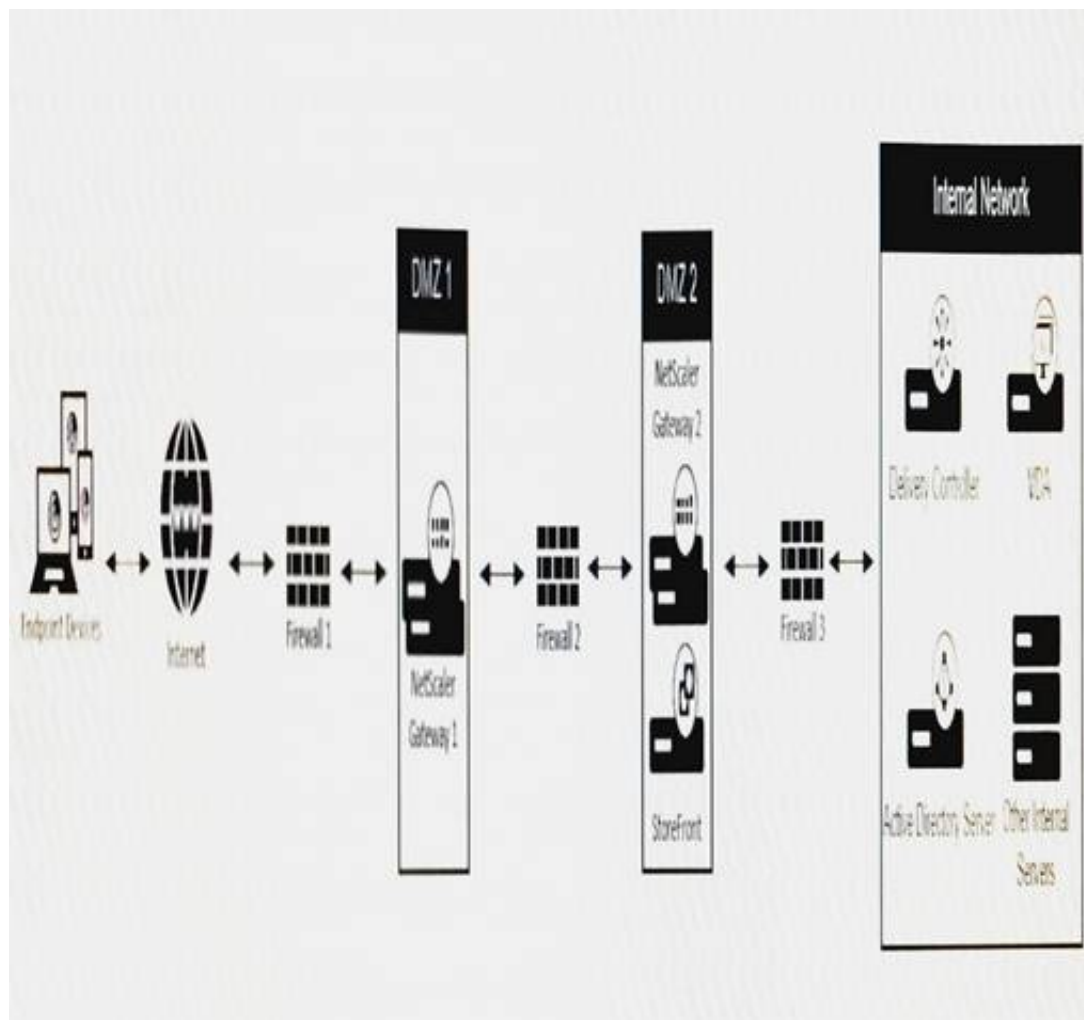
- A. The change was completed through the SCCM integration.
- B. A task was performed using Provisioning Services PowerShell interface.
- C. A task was performed using Management Command Line Interface (MCLI).
- D. The Provisioning Services database was unavailable.
- E. Auditing is disabled by default.

**Answer: D**

#### NEW QUESTION 10

Scenario: A Citrix Architect wants to set up double-hop access for an existing XenApp and XenDesktop Site. All communication across DMZ 1, DMZ 2, and the Internal Network is encrypted over port 443. The architect has proposed the design shown in the Exhibit, where DMZ 1 has NetScaler Gateway 1 and DMZ 2 has NetScaler Gateway 2 and StoreFront.

Click the Exhibit button to view the design.



Which two sets of ports should the architect request to enable on Firewall 2?

- A. Port 443 outbound and Port 1494/2598 inbound
- B. Port 443 outbound and Port 80 inbound
- C. Port 443 outbound and Port 443 inbound
- D. Port 443 outbound and Port 389/636 inbound

**Answer: D**

#### NEW QUESTION 10

Scenario: A Citrix Architect is designing a XenDesktop environment. The Engineer group uses graphical applications which require the use of AMD hardware shared virtualized GPU. Which two hypervisors can the architect select? (Choose two.)

- A. XenServer 6.5
- B. VMware vSphere 5.5
- C. XenServer 7.0
- D. VMware vSphere 6.0
- E. Microsoft Hyper-V Server 2012 R2

**Answer: AC**

#### NEW QUESTION 11

Scenario: A Citrix Architect is designing a XenDesktop environment. The Engineer group uses graphical applications which require the use of Intel Iris Pro GPUs. Which two hypervisors can the architect select for this environment? (Choose two.)

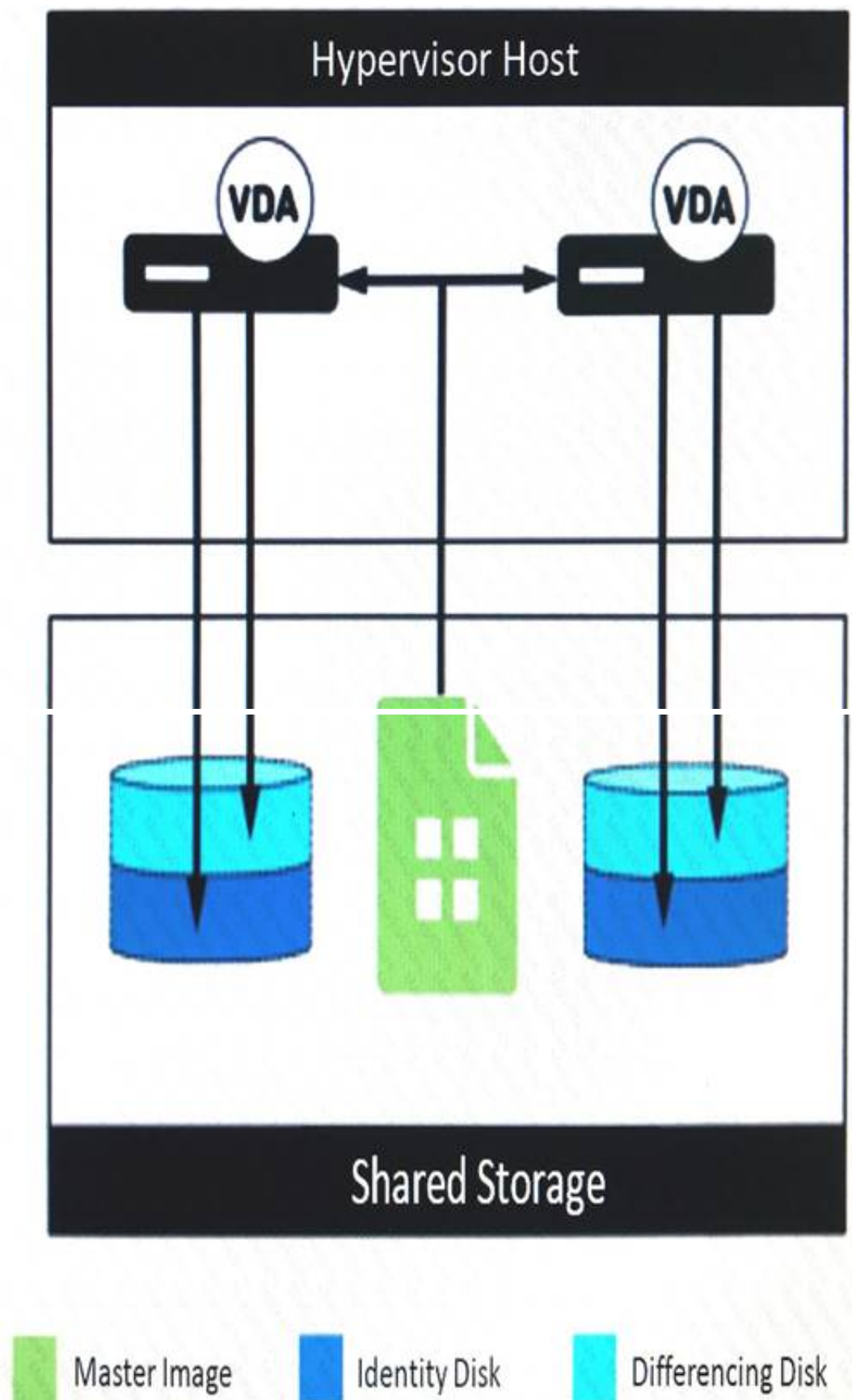
- A. XenServer 6.5
- B. Microsoft Hyper-V Server 2012 R2
- C. XenServer 7.0
- D. VMware vSphere 5.5
- E. VMware vSphere 6.0

**Answer: BE**

#### NEW QUESTION 13

Scenario: A Citrix Architect needs to redesign an existing XenApp and XenDesktop environment to use Machine Creation Services (MCS). During the design discussions, the locations for the MCS-provisioned thin clone machine disks are proposed as shown in the Exhibit. Click the Exhibit button to view the details.





Which two potential drawbacks should the architect address with the customer before proceeding with this configuration? (Choose two.)

- A. It is limited to NFS shared storage.
- B. It will require substantial read IOPS from the shared storage location during machine creation and updates.
- C. It will require substantial write IOPS to the shared storage location as temporary data is written.
- D. It will require more storage to be allocated on the VM hosts compared with other options.
- E. It is limited to certain hypervisors.

**Answer:** CE

#### NEW QUESTION 16

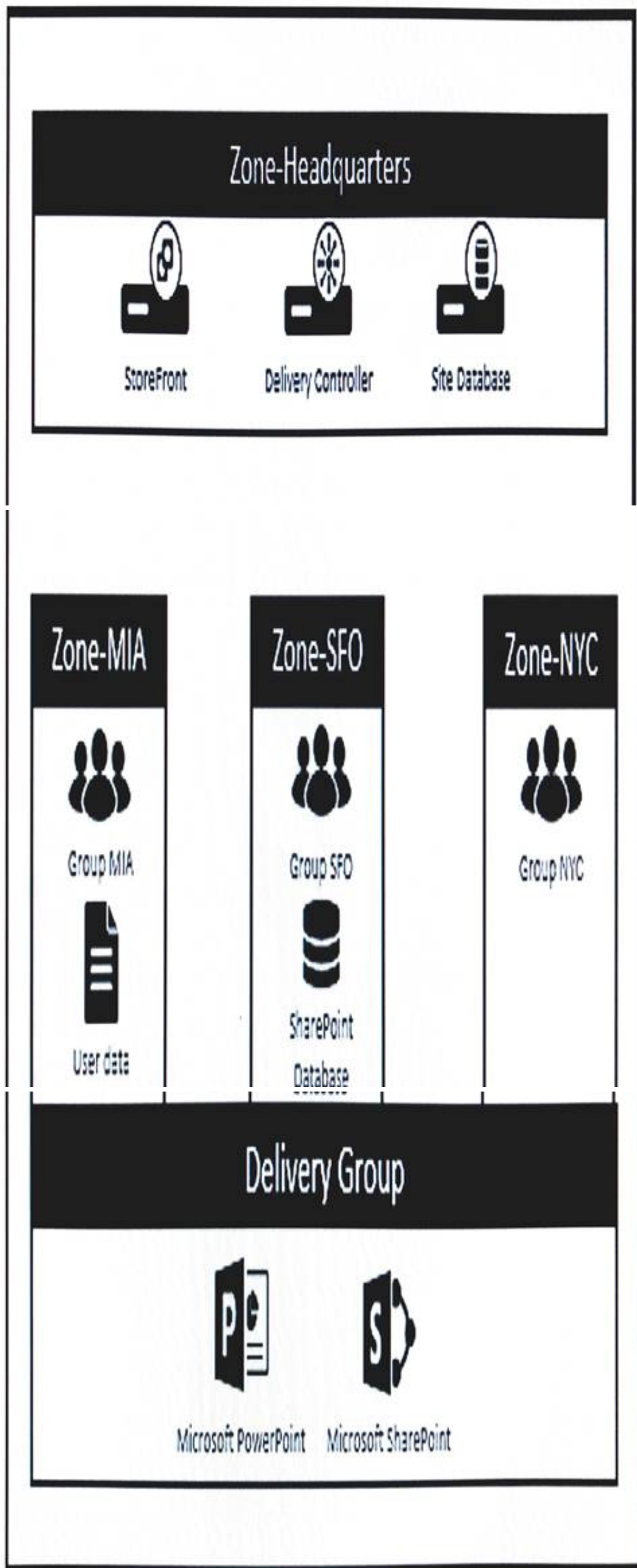
Scenario: During an assessment of a Citrix Infrastructure, a Citrix Architect finds that there are four active Sites. Each Site has one NetScaler SDX pair and two StoreFront servers in a server group to allow access for internal and external users. Users have to use different URLs when they access resources from different Sites. Single-factor authentication is used for both internal and external access. NetScaler appliances are placed in the DMZ with the appropriate firewall ports configured to allow Citrix traffic. Many of the internal users connect using corporate-owned laptops and some external users also connect using personal devices. The architect needs to provide a design for a multi-tier environment with segregated internal and external traffic on the NetScaler appliance. How many NetScaler instances and StoreFront servers are required to meet this highly available design?

- A. Eight NetScaler instances (two in each Site) and sixteen StoreFront servers (four in each Site)
- B. Four NetScaler instances (one in each Site) and eight StoreFront servers (two in each Site)
- C. Eight NetScaler instances (two in each Site) and eight StoreFront servers (two in each Site)
- D. Sixteen NetScaler instances (four in each Site) and eight StoreFront servers (two in each Site)

**Answer:** B

#### NEW QUESTION 19

Scenario: A Citrix Architect needs to design a new XenApp and XenDesktop environment. The design has a primary zone and three satellite zones. Each satellite zone has a number of Virtual Delivery Agent (VDA) machines that belong to a single Delivery Group spanning across all three satellite zones. Click the Exhibit button for more details about the configuration.



How should the architect ensure that the SharePoint application has optimal performance for all the user groups?

- A. Publish SharePoint in an individual Delivery Group within each zone.
- B. Use PowerShell to change the process priority to "high" for SharePoint within Zone-SFO.
- C. Edit the zone properties to only allow SharePoint to launch in Zone-SFO.
- D. Edit the application properties to set Zone-SFO as the home zone for SharePoint.

**Answer:** B

**NEW QUESTION 20**



Scenario: A Citrix Architect needs to implement XenDesktop in an environment. The Customer Service team processes credit card information in Web applications. A Payment Card Industry (PCI) audit determines that processes that can run on a Virtual Delivery Agent (VDA) machine are controlled through the use of whitelisting.

Which method would be an appropriate fit for the environment, based on the requirements?

- A. Citrix Secure Browser
- B. NTFS Permissions
- C. Microsoft App-V
- D. Citrix Workspace Environment Management

**Answer: D**

#### NEW QUESTION 24

Scenario: A Citrix Architect needs to design a new XenApp and XenDesktop environment. The design will require three different StoreFront Stores and three corresponding Citrix Receiver for Web sites. Each different Store and Citrix Receiver for Web site will serve different business units. Each of these will also require their own branding and SSL certificate. The solution should remain supported by Citrix.

The architect has already installed StoreFront on a server.

How can the architect achieve the desired design while keeping cost and maintenance requirements as low as possible?

- A. Create two extra IIS Sites, bind the certificates in IIS manager, copy the StoreFront configurations to the two new IIS Sites, and use a text editor to configure all three StoreFront Stores.
- B. Deploy two extra virtual servers, bind the certificates in IIS manager, and install StoreFront again on each new virtual server.
- C. Create two extra IIS Sites, bind the certificates in IIS manager, copy the StoreFront configuration to the two new IIS Sites, and use the StoreFront console to configure all three StoreFront Stores.
- D. Create two extra IIS Sites, bind the certificates in IIS manager, use PowerShell to deploy additional Stores to the two new IIS Sites, and use a text editor to configure all three StoreFront Stores.

**Answer: C**

#### NEW QUESTION 28

Scenario: A Citrix Architect needs to design a new XenApp and XenDesktop environment for a financial services company. During the project kickoff meeting, the organization states the following business priorities:

"Overall, we want a robust solution which ensures that users can access their resources at any time, even if our primary datacenter experiences an outage. Our employees will need to access their resources from both inside and outside our corporate network, but we need to ensure that we enable this in a secure manner and protect our sensitive data."

Which four design decisions align with the organization's stated business drivers? (Choose four.)

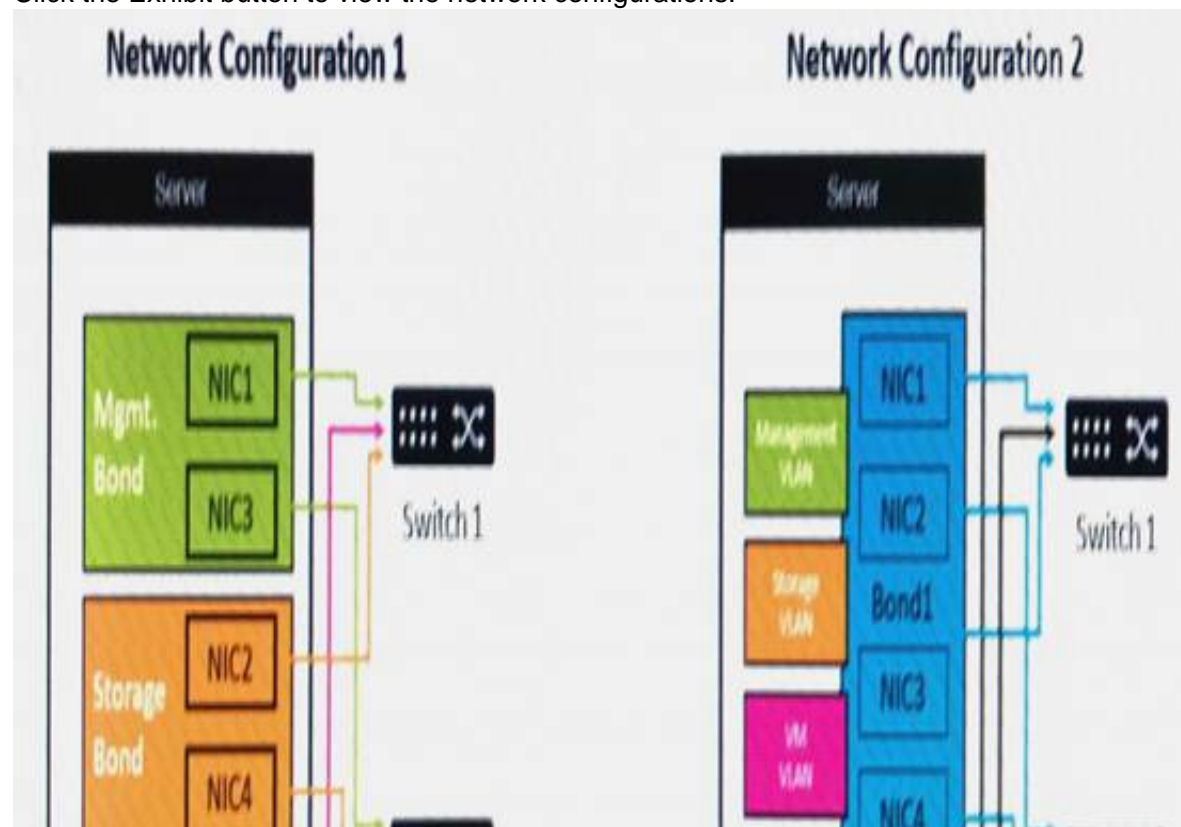
- A. Redundancy should be implemented for all infrastructure components.
- B. Server OS Virtual Delivery Agent (VDA) machines should be used to increase user density per machine.
- C. Optimal Gateway Routing should be configured on StoreFront.
- D. NetScaler will be required in the environment.
- E. A multi-Site architecture and disaster recovery plan will be required.
- F. Single image management should be included in the design.
- G. SmartAccess or SmartControl features should be considered for this environment.

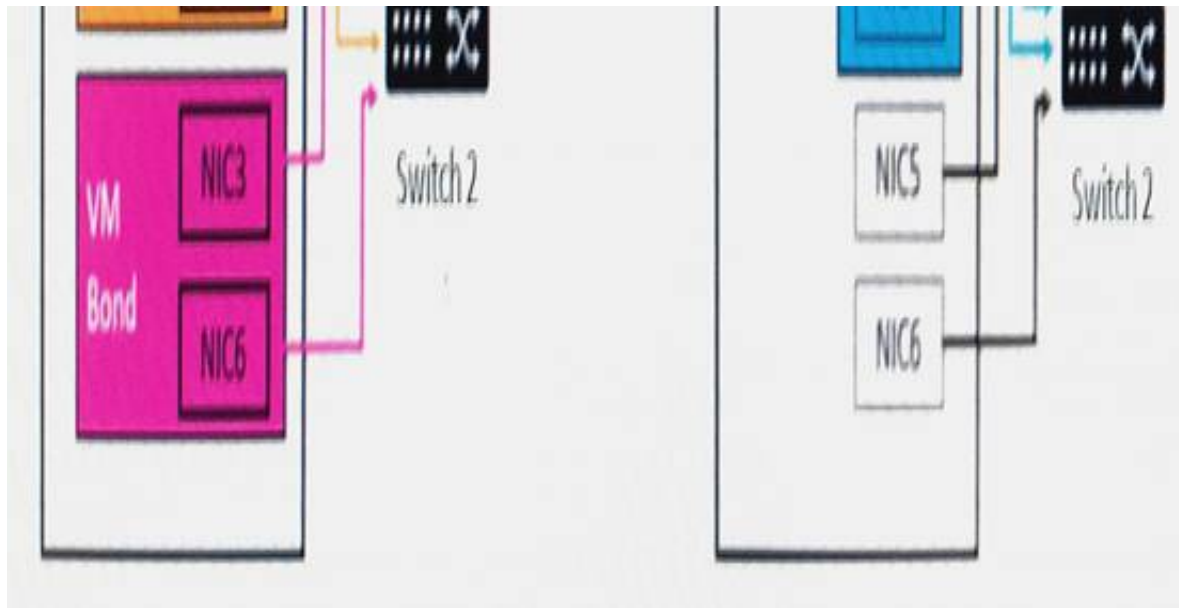
**Answer: BCDG**

#### NEW QUESTION 30

Scenario: A Citrix Architect is performing a XenApp and XenDesktop design. During a discussion with the server hardware team, two potential network configurations are proposed for the XenServer hosts.

Click the Exhibit button to view the network configurations.





Which statement will support a decision to use Network Configuration 2?

- A. It will ensure that virtual machine workloads do NOT interfere with each other.
- B. It will provide greater security for all traffic types.
- C. It will achieve a higher level of redundancy for the different traffic types.
- D. It will reserve more bandwidth for virtual machine traffic.

**Answer: C**

### NEW QUESTION 33

Scenario: A Citrix Architect has designed an active/passive XenApp and XenDesktop environment for a customer, where the passive datacenter serves as the disaster recovery datacenter for all users.

The following has been configured:

- ▶ NetScaler Global Server Load Balancing (GSLB) to provide single URL direction to the active datacenter.
- ▶ GSLB has health monitors configured for the load balanced servers.
- ▶ NetScaler Gateways are on both datacenters.
- ▶ NetScaler load balancing occurs for StoreFront and Delivery Controller XML services.
- ▶ A single XenApp and XenDesktop Site exists.
- ▶ Four Delivery Controllers are members of the Site.
- ▶ Two Delivery Controllers are members of the primary zone in the active datacenter.
- ▶ Two Delivery Controllers are members of the satellite zone in the passive datacenter.
- ▶ SQL is deployed in the active datacenter.
- ▶ Local Host Cache is enabled.
- ▶ Two StoreFront servers are deployed in each datacenter aggregating resources from the Delivery Controllers in the respective datacenter.
- ▶ Virtual Delivery Agent (VDA) machines are deployed in both datacenters and configured to register with Delivery Controllers in their zone.

What would happen if the SQL Server in the primary datacenter were turned off?

- A. VDA machines from the primary datacenter would register with the Delivery Controllers in the passive datacenter.
- B. GSLB will NOT identify that the SQL Server is down and sessions cannot launch.
- C. StoreFront in the primary datacenter would still be able to launch sessions.
- D. GSLB will start redirecting connections to the secondary datacenter.

**Answer: A**

### NEW QUESTION 37

Scenario: A Citrix Architect needs to design a new XenApp and XenDesktop environment.

The table in the Exhibit lists details about the requirements of the current user groups and their Virtual Delivery Agent (VDA) machine workloads.

Click the Exhibit button to view the table.

User	Scaling Priority	VDA Type	Workload Weight	CPU Overcommit	Virtual CPUs per VIM	VMs per Host	Users per VM
User Group 1	Scalability	Server	Medium	1:5:1	6	16	20
User Group 2	User experience	Desktop	Heavy	6:1	4	36	1
User Group 3	Scalability	Desktop	Medium	6:1	2	40	1
User Group 4	Scalability	Server	Medium	1:5:1	6	27	20

The architect should scale the hardware used to host the VMs for User Group 1 to \_\_\_\_ cores. (Choose the correct option to complete the sentence.)

- A. 32
- B. 24
- C. 16
- D. 96
- E. 64

**Answer: B**

### NEW QUESTION 41

Scenario: A Citrix Architect has implemented a multi-location profile strategy as part of a large XenApp and XenDesktop solution. The architect needs to implement a single policy that sets the profile path for all users.

▶

New York users – Server:NYC-FS.company.lan – Share: NYC-Profiles\$  
 ▶ Miami users – Server:MIA-FS.company.lan – Share: MIA-Profiles\$  
 ▶ San Francisco users – Server:SFO-FS.company.lan – Share: SFO-Profiles\$ The architect has proposed the usage of the following path for all users:  
 \\#Loc#-FS.company.lan\#Loc#-Profiles\$\#sAMAccountName#\%ProfileVer%\

What does the architect need to define in order to use the above path for all users as the profile location?

- A. A Loc variable using the Current-Location attribute
- B. A new attribute called Loc using Active Directory Explorer
- C. A user environment variable Loc using a login script
- D. A DFS-ROOT variable per datacenter and incorporate the user environment variable %homeshare%

**Answer: C**

#### NEW QUESTION 46

Scenario: While assessing the User Layer, a Citrix Architect finds that most of the internal users connect using corporate-owned laptops, desktop devices, and thin clients. Many of these laptops and desktop devices are running Windows 10, while the remainder of the machines are running Windows 7 and are in the process of being migrated to Windows 10. Some users also connect using personal devices.

Currently, Citrix Receiver is manually installed on any endpoint device added to the company. All these devices use Citrix Receiver version 4.8 and above. Some of the internal users with Windows laptops are experiencing issues in which devices such as a keyboard, mouse, a monitor connected to a docking station or a USB hub are NOT usable in an HDX session.

Which action should the architect recommend to provide a uniform user experience for all users?

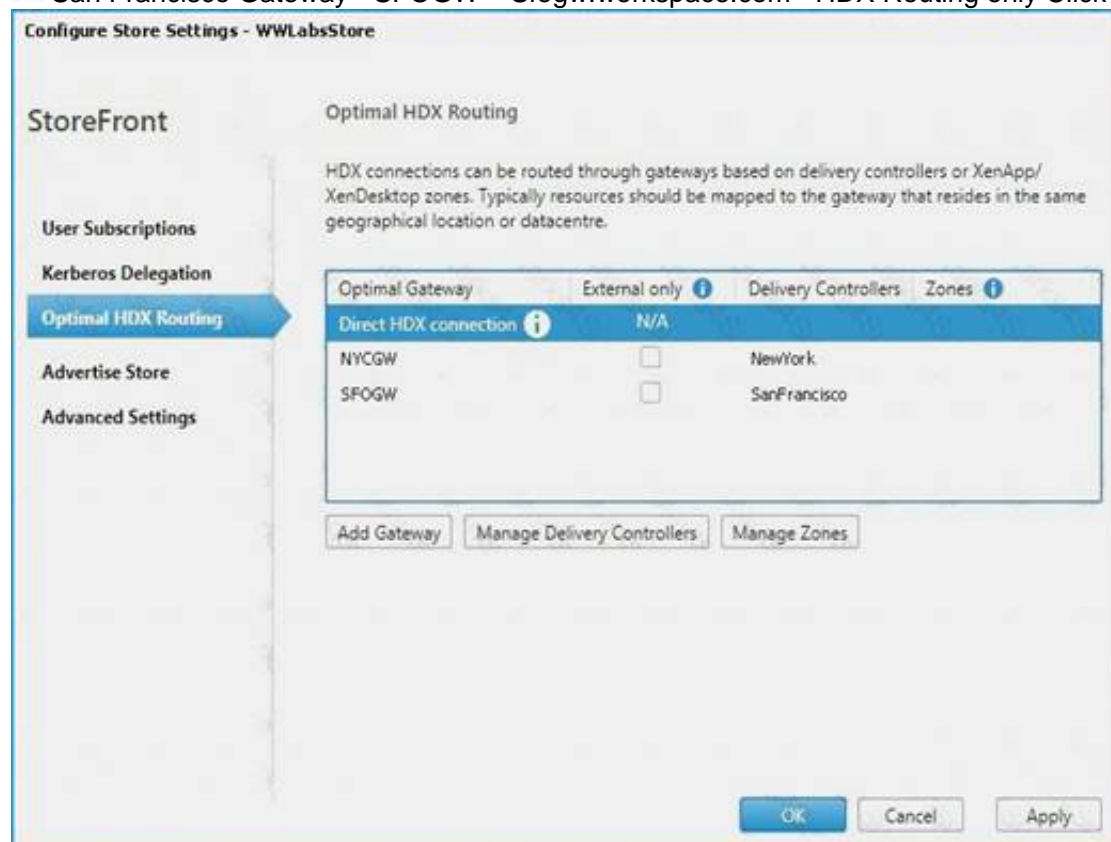
- A. Recreate user accounts in Active Directory
- B. Upgrade all clients to the latest version of Citrix Receiver
- C. Upgrade drivers of peripheral devices
- D. Recreate user profiles

**Answer: B**

#### NEW QUESTION 49

Scenario: A Citrix Architect needs to design a new XenApp and XenDesktop environment. While deploying Optimal HDX Routing for the customer, the architect makes the following configurations:

- ▶ Authentication Gateway - AuthGW – Logon.workspace.com - Authentication only
  - ▶ New York Gateway - NYCGW – Nycgw.workspace.com - HDX Routing only
  - ▶ San Francisco Gateway - SFOGW – Sfogw.workspace.com - HDX Routing only
- Click the Exhibit button to view further details about the configuration.



Upon investigation of the load on the NetScalers, the architect determines that both internal and external HDX traffic flow through the NetScaler Gateways and the NetScalers are running at capacity.

Which PowerShell commandlet and parameter can help the architect address this issue until more NetScaler resources are procured?

- A. Set-DSOptimalGatewayForFarms -onDirectAccess=false
- B. Set-STFCitrixAGBasicOptions -onDirectAccess=true
- C. Set-STFCitrixAGBasicOptions -onDirectAccess=false
- D. Set-DSOptimalGatewayForFarms -onDirectAccess=true

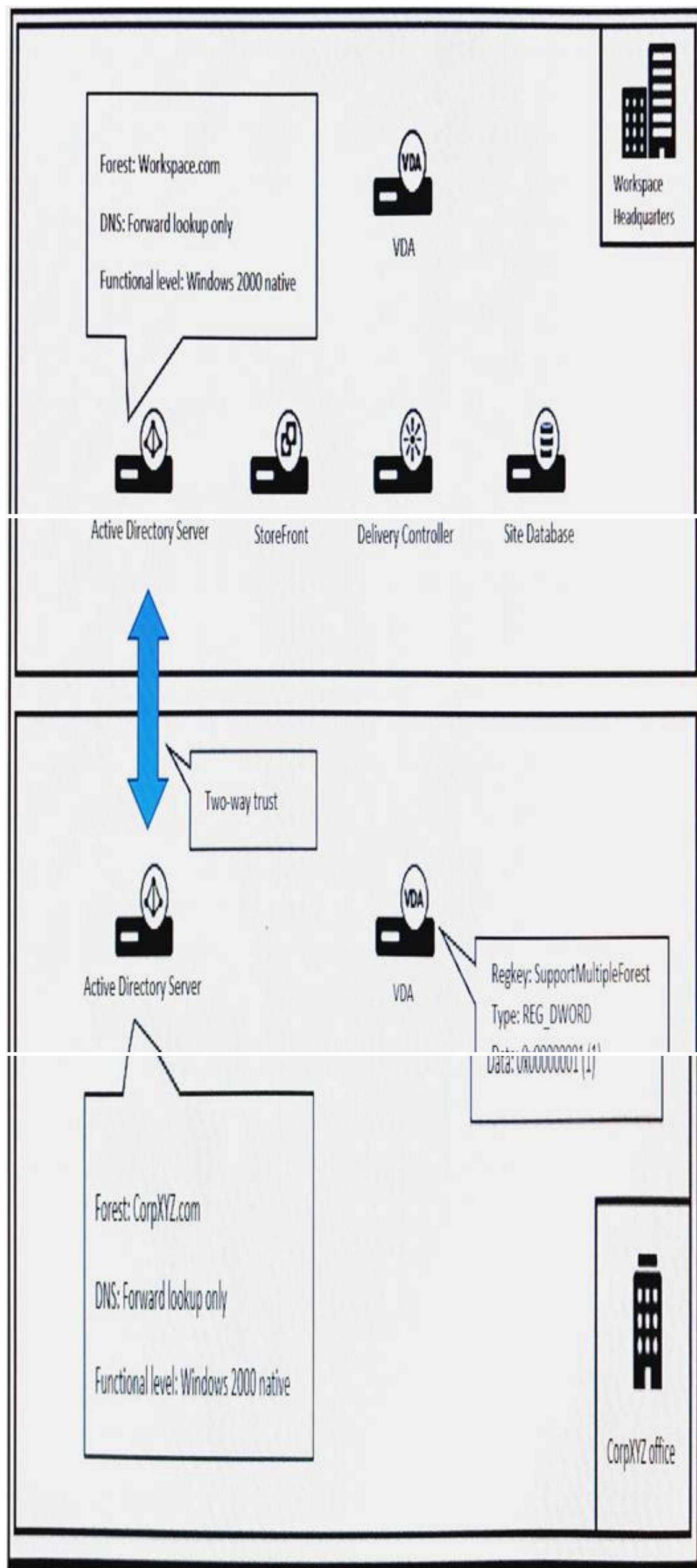
**Answer: A**

#### NEW QUESTION 50

Scenario: A Citrix Architect is reviewing a XenApp and XenDesktop design for an environment with multiple Active Directory forests.

Click the Exhibit button to view the design details.





Which risk should the architect highlight to the customer, based on the details listed in the Exhibit?

- A. The SupportMultipleForest registry key is NOT supported.
- B. The Active Directory trust method is NOT supported.
- C. The Active Directory functional level is NOT supported.
- D. The DNS lookup strategy is NOT supported.

**Answer: C**

#### NEW QUESTION 51

Scenario: A large retail environment includes a StoreFront server group with two servers, each with 2 vCPUs and 4 GB of RAM. The server group handles about 25,000 user connections per hour, with a majority of the users accessing the environment using native Receiver. Workspace Control has been disabled for the environment.

A Citrix Architect learns that the company will soon merge with another retail chain. The XenApp and XenDesktop environment must double its capacity, and the StoreFront server group is expected to handle about 40,000 user connections per hour.

What should the architect do to meet the expected load while maintaining high availability with optimal resource allocation for the StoreFront component?

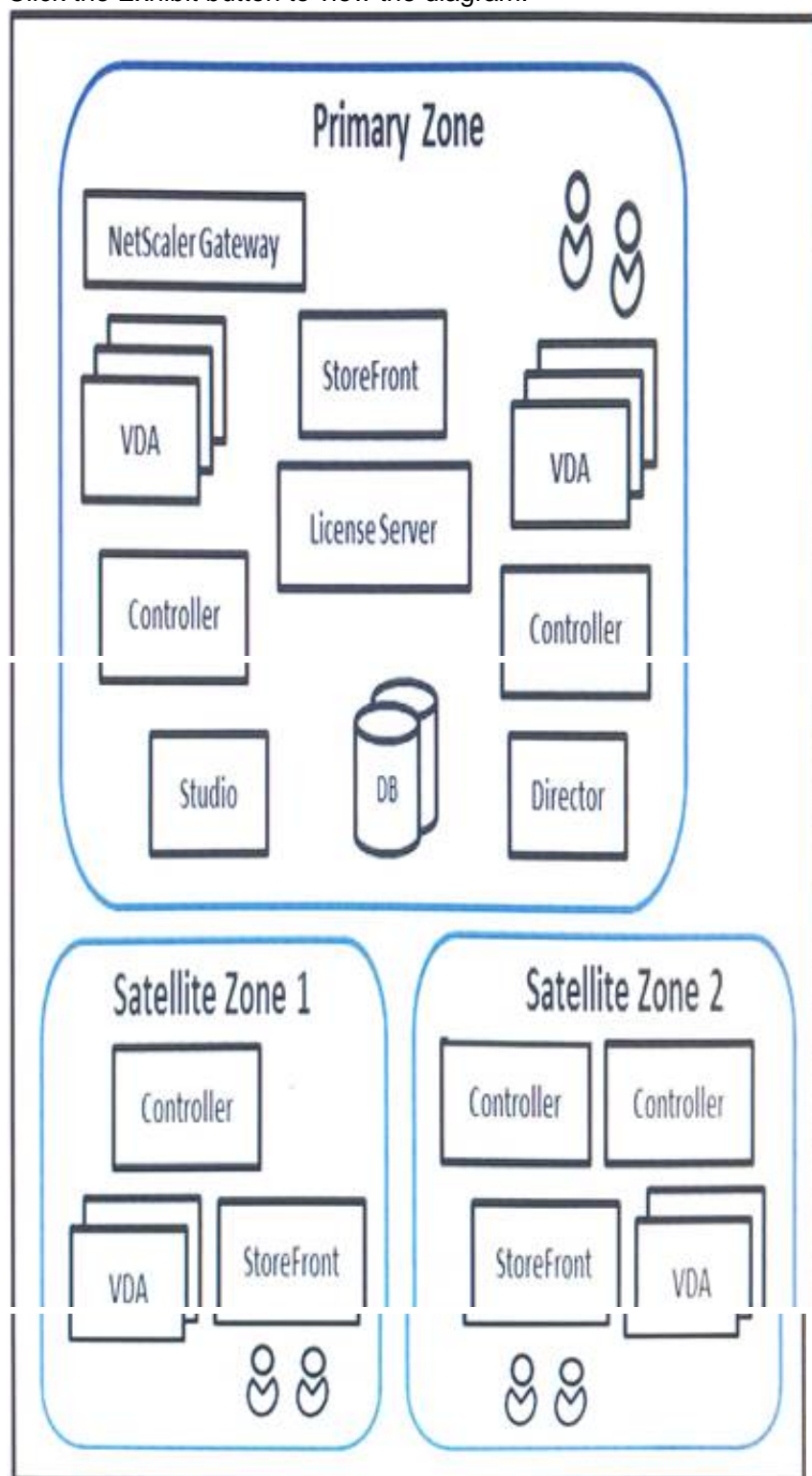
- A. Add a third StoreFront server with 2 vCPUs and 4 GB of RAM.
- B. Allocate an additional 2 vCPUs to each existing StoreFront server.
- C. Train users to begin accessing the environment using Receiver for Web.
- D. Allocate an additional 2 GB of RAM to each existing StoreFront server.
- E. Enable Workspace Control for all StoreFront stores.

**Answer: E**

#### NEW QUESTION 55

Scenario: A Citrix Architect needs to assess a XenApp and XenDesktop environment. The XenApp and XenDesktop diagram in the Exhibit gives details about the current Site and Zone design.

Click the Exhibit button to view the diagram.



Which statement is correct if all the Delivery Controllers in the Primary Zone fail?

- A. Satellite Zone 2 will be promoted and the Primary Zone Virtual Delivery Agent (VDA) machines will register within Satellite Zone 2.
- B. Virtual Delivery Agent (VDA) machines in the Primary Zone will register within Satellite Zone 1.
- C. Virtual Delivery Agent (VDA) machines in the Primary Zone will register within Satellite Zone 2.
- D. Virtual Delivery Agent (VDA) machines in the Primary Zone will NOT register within Satellite Zone 1 or Satellite Zone 2.

**Answer: A**

#### NEW QUESTION 59

Scenario: A Citrix Architect is implementing a new XenApp and XenDesktop environment. The customer has stated the following requirements:

- ▶ All users must be able to aggregate resources from all Sites.
- ▶ Both Sites should be treated as one equivalent farm set.
- ▶ User connections should be directed to the New York Site with failover to San Francisco. Click the Exhibit button to view the StoreFront configurations.

Exhibit 1

Aggregate Resources

StoreFront allows you to aggregate the resources from multiple deployments. Select the controllers that need to be aggregated.

Controller	Type
<b>Aggregated</b>	
<input checked="" type="checkbox"/> NewYork	XenDesktop (7.0 or higher), XenApp (7.5 or higher)
<input checked="" type="checkbox"/> SanFrancisco	XenDesktop (7.0 or higher), XenApp (7.5 or higher)
<b>Not Aggregated</b>	
None	

Aggregate Do not aggregate

**Aggregated Controller Settings**  
These settings apply to all controllers marked as Aggregated

☐ Controllers publish identical resources

☐ Load balance resources across controllers

OK Cancel

Exhibit 2

**Map users to controllers**

Use this setting to provide access to deployments based on user's membership of Active Directory groups.

User Groups	Controllers
Everyone	NewYork, SanFrancisco

Add... Edit... Remove

Based on the configurations, requirement 1 is \_\_\_\_, requirement 2 is \_\_\_\_, and requirement 3 is \_\_\_\_.  
(Choose the correct option to complete the sentence.)

- A. met; met; NOT met
- B. NOT met; NOT met; NOT met
- C. NOT met; met; NOT met
- D. met; NOT met; NOT met
- E. met; NOT met; met
- F. met; met; met
- G. NOT met; met; met

**Answer: E**

#### NEW QUESTION 61

.....



## Thank You for Trying Our Product

\* 100% Pass or Money Back

All our products come with a 90-day Money Back Guarantee.

\* One year free update

You can enjoy free update one year. 24x7 online support.

\* Trusted by Millions

We currently serve more than 30,000,000 customers.

\* Shop Securely

All transactions are protected by VeriSign!

**100% Pass Your 1Y0-402 Exam with Our Prep Materials Via below:**

<https://www.certleader.com/1Y0-402-dumps.html>