

# Exam Questions 2V0-602

vSphere 6.5 Foundations

<https://www.2passeasy.com/dumps/2V0-602/>



#### NEW QUESTION 1

Which two choices would make a Virtual Machine compatible when enabling Fault Tolerance? (Choose two.)

- A. e1000e virtual network adapter
- B. 2 TB + VMDK
- C. 4 Virtual CPUs (vCPU)
- D. NIC passthrough

**Answer:** AC

#### NEW QUESTION 2

Which file format supports the exchange of virtual appliances across products and platforms?

- A. FAT32
- B. OVF
- C. VMDK
- D. NTFS

**Answer:** B

#### NEW QUESTION 3

A VMware vSphere 6.x Administrator has been tasked with enabling the Integrated Load Balancer for the new vRealize Log Insight cluster. What three options are required before the Integrated Load Balancer can be used? (Choose three.)

- A. The time on the vRealize Log Insight virtual appliance must be synchronized with an NTP server.
- B. All vRealize Log Insight nodes are configured as the same size.
- C. The vRealize Log Insight master and work nodes must have CA signed certificates.
- D. Verify that all vRealize Log Insight nodes and the specified Integrated Load Balancer IP address are on the same network.
- E. The vRealize Log Insight master and worker nodes must have the same certificate

**Answer:** ADE

#### NEW QUESTION 4

Which statement is a requirement for Storage vMotion?

- A. The source and destination VMDKs must be of the same provisioning type.
- B. The virtual machine cannot contain any raw device mappings (RDMs).
- C. Virtual disks must not be larger than 2TB.
- D. The host on which the virtual machine is running must have access to the source and target datastore

**Answer:** D

#### NEW QUESTION 5

What three steps are necessary to enable Jumbo Frames for use with an iSCSI storage array? (Choose three.)

- A. Configure the MTU on the physical switch.
- B. Configure the MTU on the virtual switch.
- C. Configure the MTU on the VTEP.
- D. Configure the MTU on the LAG group.
- E. Configure the MTU on the VMKernel port

**Answer:** ABE

#### NEW QUESTION 6

What two utilities provide a VMware vSphere 6.x Administrator a detailed look at how ESXi uses resources in real time? (Choose two.)

- A. Esxtop
- B. Vim-cmd
- C. Resxtop
- D. Esxcli

**Answer:** AC

#### NEW QUESTION 7

Which two statements are correct when licensing an ESXi 6.x host? (Choose two.)

- A. ESXi licenses can be assigned utilizing the ESXi host client.
- B. Bulk licensing requires vSphere PowerCLI.
- C. Bulk licensing requires vSphere Auto Deploy to be enabled.
- D. ESXi licenses can only be applied to ESXi hosts connected to a vCenter Server

**Answer:** AB

#### NEW QUESTION 8

Which three functions are provided by Storage DRS? (Choose three.)

- A. space load balancing among datastores within a datastore cluster
- B. VM disk sizing recommendations for virtual machines in datastores within a datastore cluster
- C. I/O load balancing among datastores within a datastore cluster
- D. snapshot consolidation recommendations among datastores within a datastore cluster
- E. initial placement recommendations for virtual disks based on space and I/O workload

**Answer:** ACE

#### NEW QUESTION 9

Which three object types can be stored in the Content Library? (Choose three.)

- A. vDS backups
- B. VM templates
- C. vAPP templates
- D. ISO files

**Answer:** BCD

#### NEW QUESTION 10

What are two requirements for Guest Operating System Customizations? (Choose two.)

- A. The ESXi host that the virtual machine is running on must be version 5.5 or later.
- B. Microsoft Sysprep tools must be installed on the Windows VM to be cloned.
- C. VMware Tools must be installed on the virtual machine or template.
- D. The guest operating system being customized must be installed on a disk attached as SCSI node 0:0 in the virtual machine configuration.

**Answer:** CD

#### NEW QUESTION 10

One of your virtual machines (VM) has performance issues and sometimes is unresponsive. Which VM file must be checked in order to find the root cause?

- A. vpxd.log
- B. ds.log
- C. vminst.log
- D. vmware.log

**Answer:** C

#### NEW QUESTION 13

What is required to create a vSphere Distributed Switch? (Choose two.)

- A. A minimum of two physical uplinks is required.
- B. vSphere Enterprise Plus licensing is required.
- C. The host is added to a vCenter Server.
- D. Login to the ESXi Host with the Root account

**Answer:** AC

#### NEW QUESTION 14

Which two options are available when migrating a powered off VM and relocating the attached disks? (Choose two.)

- A. Thick Provision Eager Zeroed
- B. Raw Device Mapping Physical Compatibility
- C. Same format as source
- D. Raw Device Mapping Virtual Compatibility

**Answer:** AC

**Explanation:** Reference <https://pubs.vmware.com/vsphere-51/index.jsp?topic=%2Fcom.vmware.vsphere.vcenterhost.doc%2FGUID- EA>

#### NEW QUESTION 19

Which three virtual hardware configurations will allow snapshots? (Choose three.)

- A. Physical Mode RDMs
- B. bus sharing
- C. Full memory reservation
- D. Virtual Mode RDMs
- E. 16+ vCPU

**Answer:** CDE

#### NEW QUESTION 21

Which Distributed Switch Load Balancing option requires configuration of the physical Ethernet switch to operate properly?

- A. Route based on originating virtual port
- B. Use explicit failover
- C. Route based on IP hash
- D. Route based on physical NIC load
- E. Route based on source MAC hash

**Answer:** C

#### NEW QUESTION 24

What are two valid iSCSI discovery methods? (Choose two.)

- A. Assigned Discovery
- B. Automatic Discovery
- C. Static Discovery
- D. LUN Masking
- E. Dynamic Discovery

**Answer:** CE

**Explanation:** Reference <https://docs.vmware.com/en/VMware-vSphere/6.5/com.vmware.vsphere.storage.doc/GUID-66215AF3-2D81-4>

#### NEW QUESTION 27

Which three options are available when applying a Customization Specification to an existing virtual machine? (Choose three.)

- A. Modify a specification
- B. Select an existing specification
- C. Import a specification
- D. Create a specification from an existing specification
- E. Create a specification

**Answer:** BDE

#### NEW QUESTION 29

A vSphere Administrator notices that sometimes they receive poor network throughput for multiple port groups that reside on a vSwitch with multiple physical uplinks (vmnics).

The configuration on the ESXi host is identical to other hosts that are working properly in the same cluster. What should be done next?

- A. Restart Management agents in ESXi Using Direct Console User Interface (DCUI).
- B. Add additional port groups to the vSwitch.
- C. Alter the failover order of the vmnics until a bad vmnic is found.
- D. Add additional resources to the virtual machines that are powered o

**Answer:** A

#### NEW QUESTION 33

Virtual machines do not power on after completing the clone or deploy from template workflow in the vSphere Web Client.

What two solutions will fix this problem? (Choose two.)

- A. Increase the virtual machine memory reservation.
- B. Increase the amount of memory assigned to the virtual machine.
- C. Increase the EVC compatibility mode setting.
- D. Increase the datastore size where the virtual machine swap file exist

**Answer:** AD

#### NEW QUESTION 38

Which virtual switch load balancing method should be used when teaming network interfaces with EtherChannel?

- A. Route based on originating virtual port.
- B. Route based on IP hash.
- C. Route based on physical NIC load.
- D. Route based on source MAC hash.
- E. Use explicit failover orde

**Answer:** B

#### NEW QUESTION 42

When adding a new VLAN to an existing virtual distributed switch, which three steps are necessary? (Choose three.)

- A. Right click the vDS and select Distributed Port Group, then select New Distributed Port Group.
- B. Right click on the data center, select Distributed Switch, select New Distributed Switch.
- C. Specify the VLAN ID and VLAN type.

- D. Provide a name for the Distributed Port Group.
- E. Specify the number of physical uplinks from the vDS to the VLA

**Answer:** ACD

#### NEW QUESTION 43

Which two options can change the thin provisioned disk to thick provisioned? (Choose two.)

- A. Use vMotion to migrate the VM to another ESXi host without moving the disks.
- B. Use Storage vMotion of the running VM to the same datastore and select Thick Provision.
- C. Power off the VM, locate the VMDK disk in the Datastore browser, right-click that and select Inflate.
- D. Use Storage vMotion of the running VM to another datastore and select Thick Provision.

**Answer:** CD

**Explanation:** Reference [https://pubs.vmware.com/vsphere-65/index.jsp?topic=%2Fcom.vmware.vsphere.vm\\_admin.doc%2FGUID-E8F](https://pubs.vmware.com/vsphere-65/index.jsp?topic=%2Fcom.vmware.vsphere.vm_admin.doc%2FGUID-E8F)

#### NEW QUESTION 46

Which two options are requirements to perform a migration between vCenter Server instances? (Choose two.)

- A. The vCenter Server servers must be time-synchronized.
- B. The ESXi hosts must be version 5.5 or later.
- C. The vCenter Servers must be version 6.0 or later.
- D. The vCenter Server must be in the same single Sign-On domain.
- E. The ESXi hosts must have vSphere Standard, Advanced, or Enterprise Plus licensin

**Answer:** AC

#### NEW QUESTION 48

What two files are created when the Take snapshot operation is executed? (Choose two.) A. .delta.vmdk

- A. .nvram
- B. .vmsn
- C. .lck

**Answer:** AC

#### NEW QUESTION 52

Which three actions are available in Troubleshooting Mode in the ESXi Direct Console User Interface (DCUI)? (Choose three.)

- A. Enable ESXi Shell.
- B. Modify DCUI idle timeout.
- C. Modify Password.
- D. Restart Management Network.
- E. Modify SSH timeou

**Answer:** ABE

#### NEW QUESTION 56

A vSphere Administrator notices that a virtual machine is performing poorly, and upon investigation has observed the following:  
What is the first step in troubleshooting this problem?

- A. Shut down the virtual machine and double the amount of vCPU and RAM assigned.
- B. Shut down the virtual machine and set the number of vCPU as high as possible.
- C. Migrate the virtual machine to an ESXi host with more resources available.
- D. Configure the virtual machine with CPU and Memory limit

**Answer:** C

#### NEW QUESTION 57

A vSphere Administrator sees the alarm: vSphere HA virtual machine failed to failover  
This occurred for a number of virtual machines on a particular ESXi host in a cluster with vSphere High Availability (HA) enabled.  
The virtual machines guest operating systems never reported a power event. What happened?

- A. The virtual machines were vMotioned off of the ESXi host.
- B. The ESXi host is still running but has disconnected from the network.
- C. The ESXi host failed and vSphere HA successfully failed over the virtual machines.
- D. The previous virtual machine cloning operations failed to complet

**Answer:** C

#### NEW QUESTION 59

Which are two requirements for vMotion without shared storage? (Choose two.)

- A. The source host must have access to the destination storage.
- B. The hosts must be licensed with vSphere Enterprise Plus.
- C. The destination host must have access to any RDM LUNs.
- D. The source and destination hosts must have identical CPUs.
- E. Hosts must be running vSphere 5.1 or later

**Answer:** CE

#### NEW QUESTION 63

ESXi 6.x can be installed upon which three supported hardware configurations? (Choose three.)

- A. Local disk connected through Serial ATA (SATA)
- B. Intel NX/XD disabled for the CPU in the system BIOS
- C. 1 GbE network adapter
- D. 2 GB of physical RAM
- E. Intel NX/XD enabled for the CPU in the system BIOS

**Answer:** ACE

#### NEW QUESTION 66

Which three features can be configured during the initial creation of a cluster? (Choose three.)

- A. Proactive HA
- B. EVC
- C. DRS
- D. vSAN

**Answer:** BCD

#### NEW QUESTION 68

What is the maximum supported number of vCPU per VM in VMware vSphere 6.5?

- A. 256
- B. 128
- C. 32
- D. 64

**Answer:** B

#### NEW QUESTION 69

Which two options can be used for vCenter Server 6.x database availability? (Choose two.)

- A. NSX load balancer
- B. Microsoft SQL Server 2012/2014 AlwaysOn Availability Groups (AG)
- C. vCenter Server Watchdog
- D. vCenter Server Heartbeat
- E. Microsoft Windows Server Failover Clustering

**Answer:** BE

#### NEW QUESTION 72

Which key combination will let a vSphere Administrator revert to the previous version or build of ESXi?

- A. Shift+R
- B. Ctrl+R
- C. Shift+V
- D. Ctrl+Z

**Answer:** A

#### NEW QUESTION 73

Which option is true during a virtual machine cold migration?

- A. Data is transferred over the vMotion VMKernel interface.
- B. The datastore of the virtual machine cannot be changed.
- C. Migrating a virtual machine from an Intel-based host to an AMD-based host generates an error.
- D. Migrating a 64-bit virtual machine to a 32-bit host generates a warning

**Answer:** D

#### NEW QUESTION 77

A Long-Distance vMotion migration cannot complete. Which three situations could cause this? (Choose three.)

- A. The license currently in use for the two hosts in vSphere Enterprise Edition.
- B. The round-trip time between the hosts is greater than 150 milliseconds.



- C. The virtual machine is configured to use Virtual NVMe disks.
- D. The vMotion traffic to the destination host is on the default TCP/IP stack.
- E. The license currently in use for the two hosts is vSphere Enterprise Plus Editio

**Answer:** ABD

#### NEW QUESTION 82

What are two uses of the vRealize Log Insight Agents for Windows and Linux? (Choose two.)

- A. Monitor the state of syslog/eventmgr services
- B. Collect events from flat text files
- C. Control the state of the syslog/eventmgr services
- D. Monitor directories with the filesystem

**Answer:** AB

#### NEW QUESTION 87

A vSphere Administrator notices that upgrading VMware Tools on a single VM fails. Upon closer inspection, the summary tab shows that the VMware Tools status is unmanaged.

What is true about this virtual machine?

- A. There are not any vSphere users that have permissions for the virtual machine.
- B. The VMware Tools are so old that ESXi fails to upgrade the tools.
- C. The VMware Tools were installed with non-default options chosen.
- D. The VMware tools installed is an Operating System specific Package (OSP).

**Answer:** D

#### NEW QUESTION 89

Which two choices are valid ways to patch an ESXi host? (Choose two.)

- A. utilizing the esxcli Command Line Interface
- B. vSphere Update Manager
- C. vRealize Operations Manager
- D. configuring a Host Profile

**Answer:** AB

#### NEW QUESTION 91

Which is the VDP appliance available storage configuration maximum?

- A. 2 TB
- B. 62 TB
- C. 8 TB
- D. 4 TB

**Answer:** C

#### NEW QUESTION 96

Which two options does VM Monitoring use to determine if a virtual machine should be reset? (Choose two.) A. Network activity from the virtual machine

- A. I/O activity from the virtual machine
- B. CPU activity from the virtual machine
- C. Heartbeats from VMware Tools

**Answer:** B

**Explanation:** Reference [https://pubs.vmware.com/vsphere-50/index.jsp?topic=%2Fcom.vmware.vsphere.avail.doc\\_50%2FGUID-62B80](https://pubs.vmware.com/vsphere-50/index.jsp?topic=%2Fcom.vmware.vsphere.avail.doc_50%2FGUID-62B80)

#### NEW QUESTION 98

What are two requirements needed to enable a 4 vCPU virtual machine with Fault Tolerance? (Choose two.)

- A. vSphere Enterprise Plus license
- B. 10 GbE uplink for FT logging network
- C. vSphere Standard license
- D. 1 GbE uplink for FT logging network

**Answer:** AB

#### NEW QUESTION 101

Some of the VMs in a vSphere DRS cluster are not migrated as expected. Which three factors can affect DRS behavior? (Choose three.)

- A. The currently configured TPS settings for the VMs.
- B. VM Overrides.

- C. DRS Aggression Levels (Migration Threshold).
- D. CPU, Memory, and Network Utilization.
- E. The currently configured Enhanced vMotion Compatibility level for the cluster

**Answer:** BCD

#### NEW QUESTION 103

A vSphere Administrator recently upgraded to vSphere 6.5 and wants to assign more than 4 TB of RAM to the virtual machine. What must happen first?

- A. Make sure that the user account has administrative privileges at a global level.
- B. Upgrade the Virtual Machine compatibility to version 13.
- C. Obtain an ESXi server with an Intel Skylake CPU.
- D. Make sure that there are no snapshots present on the virtual machine.

**Answer:** B

**Explanation:** New Topic: Topic 2, Exam Pool B

#### NEW QUESTION 105

Which three items should be validated prior to installing ESXi 6.x? (Choose three.)

- A. Remote Storage has been disconnected.
- B. Installation media is available.
- C. Server hardware clock is set to UTC.
- D. Storage has been partitioned with a VMFS volume.
- E. Network cards have been setup to use Jumbo Frame

**Answer:** ABC

#### NEW QUESTION 108

Which two are true about the Risk badge in vRealize Operations? (Choose two.)

- A. The Risk badge indicates potential future problems that may degrade the performance of the system.
- B. Risks may require attention in the near future.
- C. The Risk badge indicates problems that are degrading performance of the system.
- D. Risks require attention now to correct system performance problem

**Answer:** AB

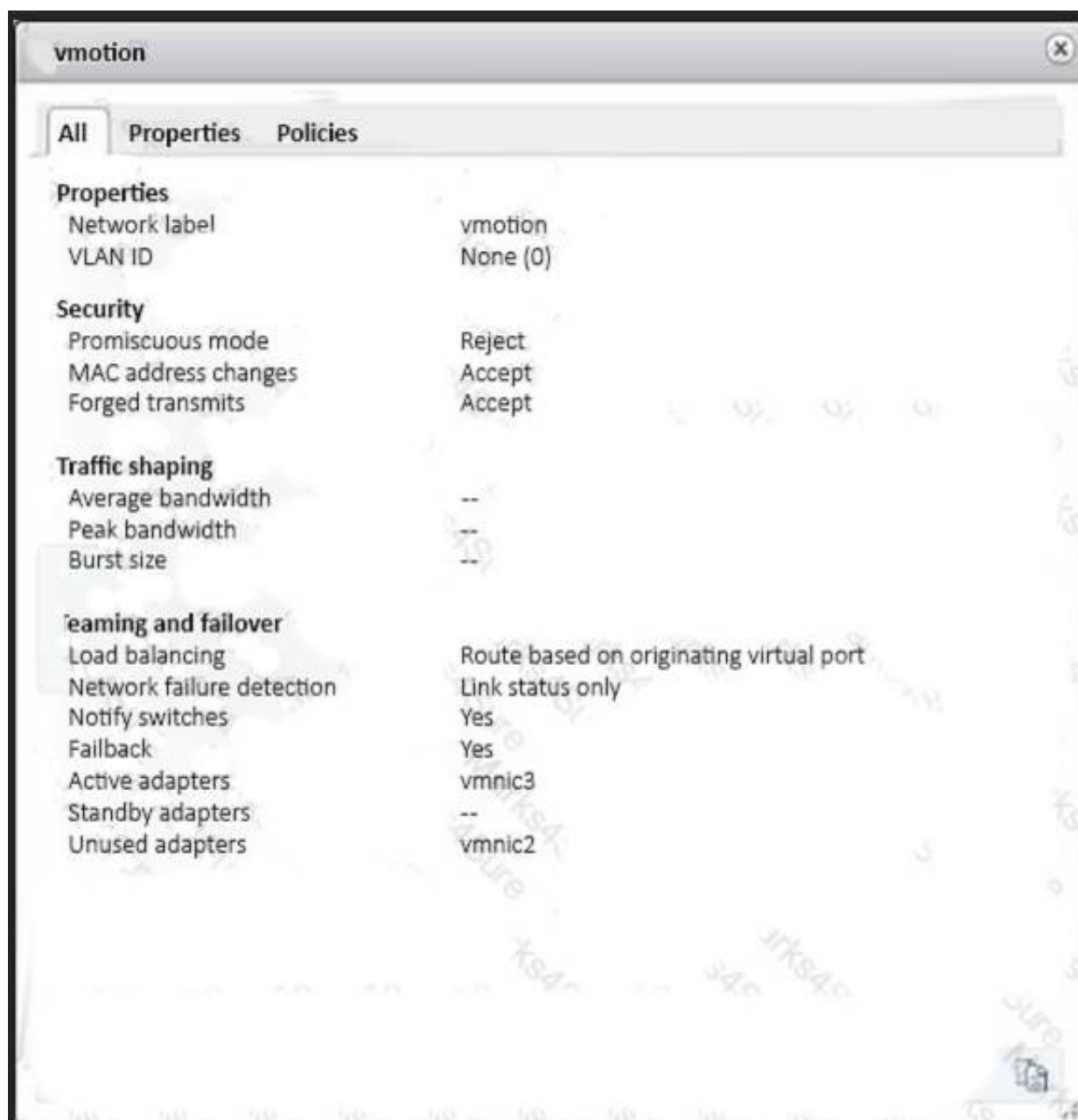
#### NEW QUESTION 113

Refer to the Exhibit.

An administrator has been given requirements to configure vMotion for a new virtual machine. The configuration should: Provide Network Redundancy  
Use VLAN 550

Be secured against anyone trying to spoof communication The vSwitch1 configuration is shown in the Exhibit.





Which three changes should be made to meet the stated requirements? (Choose three.)

- A. The VLAN ID must be set appropriately.
- B. The default values for MAC Address Changes and Forged Transmits must be altered.
- C. The teaming and failover adapters must be set appropriately.
- D. The Traffic Shaping configuration must be altered.
- E. The Load Balancing Policy must be set appropriately.

**Answer:** ABC

#### NEW QUESTION 114

A vSphere Administrator wants to enable Storage I/O Control. There is a mix of VMFS and NFS datastores. All of the VMFS datastores have hardware acceleration enabled.

The Administrator attempts to create a new datastore cluster but is unable to add all of the datastores to the cluster. What is the problem?

- A. NFS datastores can not participate in a datastore cluster.
- B. One of the hosts is currently in maintenance mode.
- C. NFS and VMFS datastores cannot be mixed in a datastore cluster.
- D. Datastores with hardware acceleration enabled can not participate in a datastore cluster.

**Answer:** C

#### NEW QUESTION 116

What is the optimal configuration when building a virtual machine for a single-threaded Windows application?

- A. Deploy single-threaded applications on uniprocessor virtual machines.
- B. Deploy single-threaded applications on symmetric multi-processor virtual machines.
- C. Tune single-threaded applications to take advantage of symmetric multi-processor resources.
- D. Tune Single-threaded applications at the hypervisor level.

**Answer:** A

#### NEW QUESTION 118

An administrator is upgrading a vSphere Distributed Switch. The existing switch is version 5.0 and the administrator wants to upgrade to the latest version possible. The environment contains several ESXi 5.1 hosts.

Which two options are available to ensure that the upgraded switch will be compatible with these hosts? (Choose two.)

- A. Upgrade the vSphere Distributed Switch to 5.5
- B. Upgrade the ESXi 5.1 hosts to version 5.5, then upgrade the vSphere Distributed Switch to 5.5
- C. Upgrade the vSphere Distributed Switch to 5.1
- D. Upgrade the ESXi host switches to 5.5, then upgrade the vSphere Distributed Switch to 5.5

**Answer:** BC

#### NEW QUESTION 122

Which two NFS Protocol versions does vSphere 6 support? (Choose two.)

- A. Version 3
- B. Version 3.1
- C. Version 4
- D. Version 4.1

**Answer:** AD

#### NEW QUESTION 123

An administrator enables vSphere High Availability (HA) on an existing cluster with a large number of hosts and virtual machines. The administrator notices that the setup of vSphere HA on some of the hosts is failing. What step, if taken, might resolve this issue?

- A. Increase the value of the config.vpxd.das.electionWaitTimeSec setting.
- B. Set the value of vpxd.das.aamMemoryLimit to 256.
- C. Set the value of the das.useDefaultIsolationAddress setting to False.
- D. Increase the value of the das.iostatsinterval settin

**Answer:** A

#### NEW QUESTION 125

Immediately after installing ESXi, an administrator observes that the Configure Lockdown Mode option is grayed out in the Direct Console User Interface (DCUI). What is the most likely explanation?

- A. The host has not yet been added to a vCenter Server.
- B. The BIOS on the host does not have NX/XD enabled.
- C. The ESXi host is running in evaluation mode.
- D. The host requires a reboot before this feature is availabl

**Answer:** A

#### NEW QUESTION 128

What happens to the status of users already logged into ESXi Shell when a vSphere administrator enables lockdown mode?

- A. Users remain logged in and can run commands, except to disable lockdown mode.
- B. Users remain logged in and can run commands, including disabling lockdown mode.
- C. Users are immediately logged out of ESXi Shell.
- D. Users are logged out after a timeout specified by the vSphere administrato

**Answer:** A

#### NEW QUESTION 132

Which two badges are major badges in vRealize Operations? (Choose two.)

- A. Risk
- B. Efficiency
- C. Workload
- D. Faults

**Answer:** AB

#### NEW QUESTION 136

What is a requirement when enabling a Virtual SAN cluster in an existing High Availability (HA) and Distributed Resource Scheduler (DRS) Cluster?

- A. Disable DRS and HA before enabling Virtual SAN
- B. Enable DRS before enabling Virtual SAN
- C. Disable HA before enabling Virtual SAN
- D. Enable Storage DRS before enabling Virtual SAN

**Answer:** C

#### NEW QUESTION 140

During an upgrade, the ESXi 6.x installer finds an existing version of ESXi and a VMFS3 volume. No virtual machines exist on the host or VMFS3 volume. The requirement is to upgrade to VMFS5. Which option should be chosen to meet this requirement?

- A. Upgrade ESXi and preserve the VMFS datastore
- B. Install ESXi and preserve the VMFS datastore
- C. Install ESXi and overwrite the VMFS datastore
- D. Upgrade ESXi and overwrite the VMFS datastore

**Answer:** C

#### NEW QUESTION 141

An administrator is configuring the Failover Order option on a vSphere Distributed Switch. Which two options should be used with IP-hash load balancing? (Choose two.)

- A. Active Uplinks
- B. Standby Uplinks
- C. Unused Uplinks
- D. Override Failover Order

**Answer:** AC

#### NEW QUESTION 143

An administrator has unsuccessfully attempted several times to install an Operating System inside a virtual machine. The administrator finds that the installation fails at random intervals.

Which two actions can be taken to resolve this issue? (Choose two.)

- A. Verify the md5sum and if invalid, download the installation files again.
- B. Attempt the installation an additional time.
- C. Attempt to use a different installation media or installation method.
- D. Create a new virtual machine and attempt the installation with the existing medi

**Answer:** AC

#### NEW QUESTION 146

A vSphere Administrator just finished installing new software on the Windows vCenter Server and notices that vCenter Server services no longer start properly. What two tasks should be done next? (Choose two.)

- A. Contact the server hardware manufacturer.
- B. Check for network port conflicts.
- C. Reinstall vCenter Server.
- D. Check the vCenter Server log

**Answer:** BD

#### NEW QUESTION 149

Which two actions are prerequisites to adding ESXi 6.x hosts to a vSphere Distributed Switch? (Choose two.)

- A. Verify that there is at least one Distributed Port Group on the Distributed Switch.
- B. Verify that the Distributed Port Group have active uplinks configured in its teaming and failover policy.
- C. Verify that the Distributed Switch has been configured with a Network Profile.
- D. Verify that Network I/O control for Management Traffic is configured for the highest share valu

**Answer:** AB

#### NEW QUESTION 154

What are three valid disk configurations for the vSphere Data Protection 6.x Appliance? (Choose three.)

- A. 500GB
- B. 1TB
- C. 1.5TB
- D. 2TB
- E. 4TB

**Answer:** ABD

#### NEW QUESTION 157

A vSphere administrator has been using vSphere in evaluation mode and now wants to deploy an environment that provides the same features. Which edition of vSphere provides similar functionality to evaluation mode?

- A. Enterprise Plus
- B. Enterprise
- C. Standard
- D. Essentials

**Answer:** A

#### NEW QUESTION 162

Which two SMTP Notification Event Details are specific to alarms triggered by events? (Choose two.)

- A. User Name
- B. Summary
- C. Old Status
- D. Target

**Answer:** AB

#### NEW QUESTION 165

A mission-critical virtual machine built on vSphere 4.1 needs to be moved to an ESXi 6.x host. Which virtual hardware version is needed to move the virtual machine without upgrading?

- A. 6
- B. 7
- C. 10
- D. 11

**Answer:** B

#### NEW QUESTION 170

An administrator creates an ESXi cluster using vSphere Auto Deploy. The ESXi hosts are configured to get a management IP address from a DHCP server. The administrator needs to troubleshoot the management network on one of the hosts. Which DCUI option should the administrator use to renew the DHCP lease?

- A. Restart Management Network
- B. Restore Network Settings
- C. Test Management Network
- D. Configure Management Network

**Answer:** A

#### NEW QUESTION 174

What is a benefit of using VMware Data Protection (VDP)?

- A. Provides support for guest-level backups and restores of Microsoft SQL Servers, Exchange Servers, and Share Point Servers.
- B. Provides support for advanced storage services including replication, encryption, deduplication, and compression.
- C. Provides direct access to VDP configuration integrated into the vSphere Client.
- D. Reduces disk space consumed by virtual machine data using deduplicatio

**Answer:** D

#### NEW QUESTION 179

A vSphere Administrator wants to migrate a virtual machine from a host with an AMD Opteron CPU to an intel Xeon CPU. Which method should be used?

- A. Storage vMotion
- B. vMotion
- C. Cold Migration
- D. Hot Migration

**Answer:** C

#### NEW QUESTION 184

An administrator is tasked with performing a vMotion migration of a virtual machine. The virtual machine is configured as follows: Which two statements are true? (Choose two.)

- A. Each ESXi host in the cluster supports multiple virtual flash resources.
- B. Each ESXi host in the cluster supports one virtual flash resource.
- C. DRS treats powered-on virtual machines with Flash Read Cache as having a preferred affinity to their current host and moves them only for mandatory reasons.
- D. DRS treats powered-on virtual machines with Flash Read Cache as having a required affinity to their current host and does not move the

**Answer:** BC

#### NEW QUESTION 187

What condition would prevent an administrator from creating a new VMFS3 datastore on an ESXi 6.x host using the vSphere Web Client?

- A. A VMFS3 datastore cannot be created on an ESXi 6.x host.
- B. The VMFS3 kernel module is not loaded.
- C. A VMFS3 datastore cannot be mounted on an ESXi 6.x host.
- D. VMFS3 datastores are not compatible with virtual machines created on an ESXi 6.x hos

**Answer:** A

#### NEW QUESTION 192

You are creating a virtual machine in the Web Client using the New Virtual Machine wizard. Which two steps are required? (Choose two.)

- A. Select a valid name.
- B. Select a cluster for the compute resource.
- C. Select a network adapter.
- D. Select the virtual machine compatibilit

**Answer:** AD

#### NEW QUESTION 193

A virtual machine is experiencing performance issues. The following performance metrics are observed:

Which two activities will likely resolve the performance issues? (Choose two.)

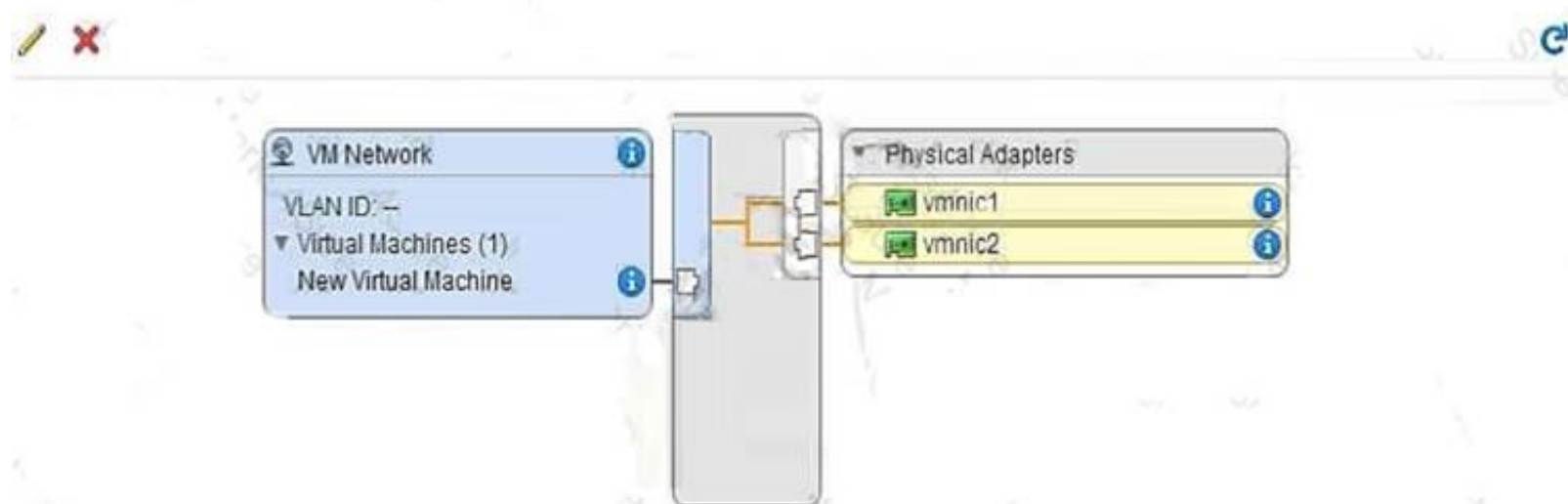
- A. Set a CPU reservation for the virtual machine.
- B. Increase the CPU limit on the virtual machine.
- C. Decrease CPU shares equally for all virtual machines on the host.
- D. Increase CPU shares equally for all virtual machines on the hos

**Answer:** AB

#### NEW QUESTION 194

Refer to the Exhibit. An administrator has configured network connectivity for a new virtual machine, as shown in the Exhibit.

Standard switch: vSwitch1 (VM Network)



What will occur with the network traffic of this virtual machine when communicating externally from vSwitch1?

- A. The virtual machine will communicate on both uplinks
- B. The virtual machine will only communicate on vmnic1
- C. The virtual machine will only communicate on vmnic2
- D. The virtual machine will fail to communicate externally

**Answer:** D

#### NEW QUESTION 196

Which two statements are Datastore Cluster requirements? (Choose two.)

- A. Datastore clusters can only contain VMFS datastores.
- B. Datastores shared across multiple data centers cannot be included in a datastore cluster.
- C. NFS and VMFS datastores cannot be combined in the same datastore cluster.
- D. Datastore clusters must contain three or more datastore

**Answer:** BC

#### NEW QUESTION 201

An administrator has configured an alarm to be notified when a virtual machine meets two conditions: high virtual CPU high active memory consumption. The alarm is malfunctioning and triggering when either condition is met instead of both. What can be done to correct the issue?

- A. Edit the alarm and select Trigger if ALL of the following conditions are satisfied.
- B. Edit the alarm and select Trigger if ANY of the following conditions are satisfied.
- C. Create two separate alarms, one for CPU and one for memory.
- D. Delete the existing alarm and create a new event based alar

**Answer:** A

#### NEW QUESTION 202

Which statement is true regarding the licensing of vCenter Server?

- A. The license for vCenter Server must be provided at the time of installation.
- B. Changing the license assigned to vCenter Server requires a restart of the vCenter Server service.
- C. Virtual machines can still be powered on if the vCenter Server license expires.
- D. Licensing for a single vCenter Server installation is determined by the number of managed virtual machine

**Answer:** C

#### NEW QUESTION 205

Which two actions are required when enabling vFlash Read Cache for a virtual machine's virtual disk? (Choose two.)

- A. A value in the Virtual Flash Read Cache text box must be entered.
- B. A Flash Resource Pool for Cache size reservation must be entered.
- C. The Device backing and the block size must be configured.
- D. The Enable virtual flash host swap cache check box must be selecte

**Answer:** AD



#### NEW QUESTION 207

An administrator creates an ESXi cluster using vSphere Auto Deploy.

The ESXi hosts are configured to get a management IP address from a DHCP server. The administrator needs to troubleshoot the management network on one of the hosts. Which DCUI option should the administrator use to renew the DHCP lease?

- A. Restart Management Network
- B. Restore Network Settings
- C. Test Management Network
- D. Configure Management Network

**Answer:** A

#### NEW QUESTION 212

An administrator has just completed performing an interactive installation of ESXi 6.x and is booting the host. How is the network initially configured?

- A. The network is configured by Automatic Private IP Addressing (APIPA).
- B. The network is configured based on the settings detected in DNS.
- C. The network is configured with the address as specified in the installer.
- D. The network is automatically configured by DHC

**Answer:** D

#### NEW QUESTION 213

An administrator is re-provisioning an ESXi host and moving it to another datacenter.

Which DCUI option should the administrator use to revert the system configuration to the default settings?

- A. Reset System Configuration
- B. Rebuild Default System Configuration
- C. Revert System Configuration
- D. Renew Default System Configuration

**Answer:** A

#### NEW QUESTION 215

What information is required as part of an interactive ESXi 6.x installation?

- A. Keyboard layout
- B. IP Address
- C. Root password
- D. DNS information

**Answer:** AC

#### NEW QUESTION 219

What are two benefits of using NFS 4.1 with vSphere 6.x as compared to NFS 3? (Choose two.)

- A. NFS 4.1 supports Kerberos Authentication
- B. NFS 4.1 supports multipathing
- C. NFS 4.1 supports IPv6
- D. NFS 4.1 supports hardware acceleration

**Answer:** AB

#### NEW QUESTION 224

Which type of Adapter does not require vmkernel networking?

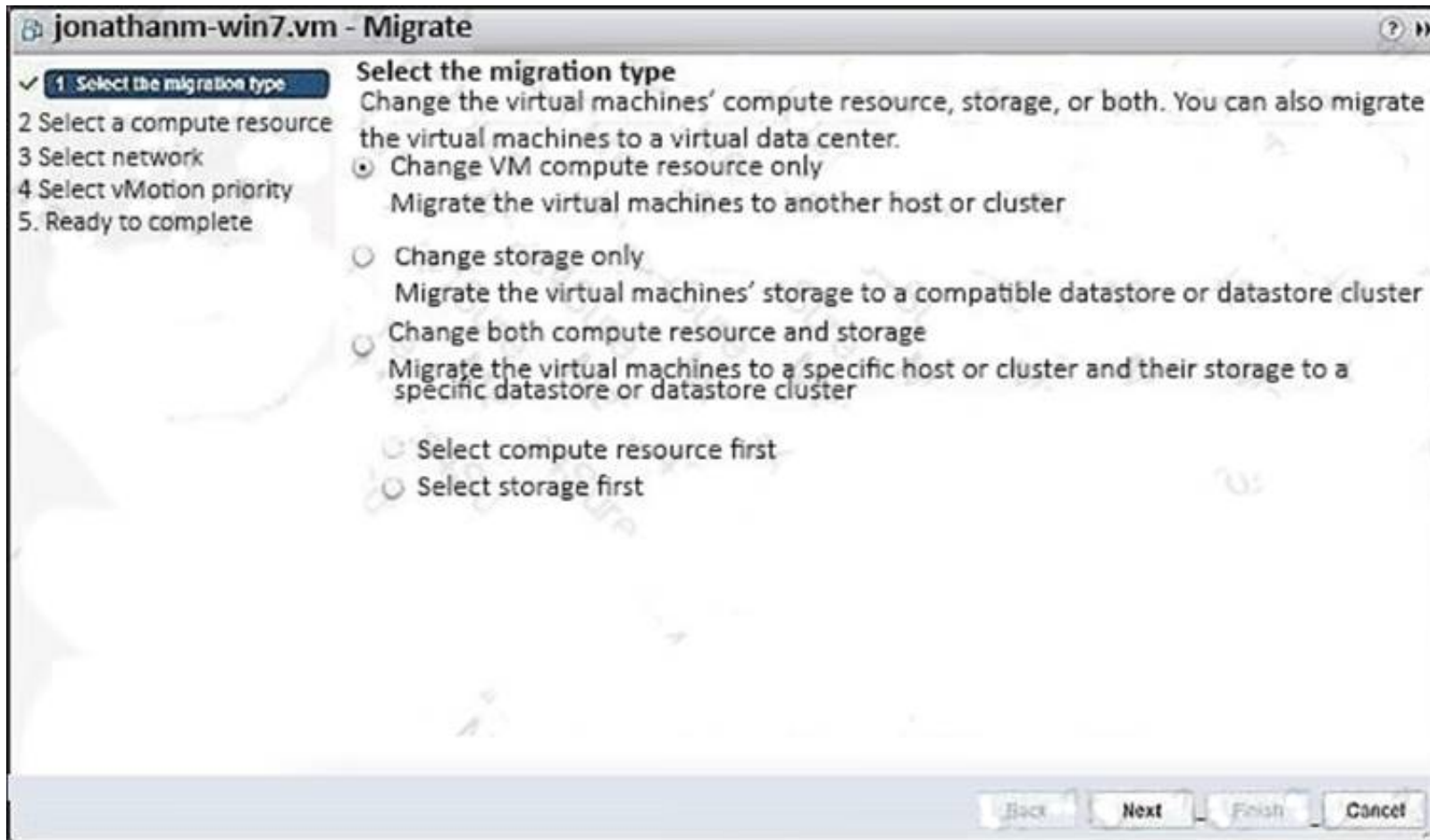
- A. Independent Hardware iSCSI Adapter
- B. Dependent Hardware iSCSI Adapter
- C. Software iSCSI Adapter
- D. Software FCoE Adapter

**Answer:** A

#### NEW QUESTION 227

Refer to the Exhibit. An administrator is migrating a powered-on virtual machine, as shown in the exhibit.





Which option should be selected to perform a Storage vMotion of the VM?

- A. Change storage only
- B. Change VM compute resource only
- C. Change both compute resource and storage, changing the compute resource first.
- D. Change both compute resource and storage, changing the storage resource first

**Answer:** A

#### NEW QUESTION 231

Which vSphere 6 Enterprise Edition feature will allow an organization to ensure that critical multi-threaded applications have the maximum possible uptime?

- A. Fault Tolerance
- B. High Availability
- C. Distributed Resource Scheduler
- D. App HA

**Answer:** A

#### NEW QUESTION 233

When configuring vSphere Replication for a virtual machine, what is the lowest Recovery Point Objective (RPO) that can be selected?

- A. 1 min
- B. 5 min
- C. 10 min
- D. 15min

**Answer:** B

#### NEW QUESTION 238

You need to add an object to an existing vApp using the vSphere Web Client. How is this accomplished?

- A. Create an Object Inside the vApp.
- B. Add an Object to a vApp.
- C. Add an Object to the Datastore the vApp is located in.
- D. Move all Objects to a new Datastore folder

**Answer:** AB

#### NEW QUESTION 243

After installation of a host in your test environment, you need to move it to production.

The only major change that needs to be made is that the hostname of the server needs to change.

What are two ways that an administrator can change the host name without editing configuration files on the host directly? (Choose two.)

- A. Login to the Direct Console User Interface and change it from here.
- B. Edit the Default TCP/IP Configuration from the vSphere Web Client.
- C. Use the Ruby vSphere Client to send a script to the ESXi host that updates the hostname.
- D. Update the information in DNS and the ESXi host will automatically update with these changes

**Answer:** AB

#### NEW QUESTION 248

An administrator is attempting to migrate a large Hadoop virtual machine using vMotion.

The administrator notices a delay when the machine is quiesced. The Hadoop virtual machine is processing many transactions a second to an in-memory database.

Which two actions would help reduce the amount of time needed to perform a vMotion on this virtual machine? (Choose two.)

- A. Use multiple NICs for the vMotion vmkernel port.
- B. Use a 10Gbps Network card for the vMotion vmkernel port.
- C. Add an additional management network to help transmit the data quicker.
- D. Disable Fault Tolerance before performing the vMotio

**Answer:** AB

#### NEW QUESTION 250

A vSphere Administrator has stated that currently Private VLAN is utilized to prevent cross-talk on the dedicated backup network.

What two actions are required to implement Private VLAN in VMware vSphere? (Choose two.)

- A. Configure Private VLAN at the dvPort Group.
- B. Upgrade to VMware vSphere Enterprise Plus.
- C. Enable Promiscuous Mode.
- D. Configure Private VLAN at the dvSwitch leve

**Answer:** AC

#### NEW QUESTION 252

In order for a company to meet regulatory requirements, all ESXi 6.x Hosts must be configured to direct logs to a syslog server.

What are two ways ESXi hosts can configured for this action? (Choose two)

- A. Use the esxcli system syslog command.
- B. Edit them in the ESXi host Advanced System Settings.
- C. From the Syslog collector user interface of the Web Client.
- D. Syslog logging is not available for ESXi Host

**Answer:** AB

#### NEW QUESTION 253

What is the effective vSphere licensing level during the 60 day evaluation period?

- A. vSphere Foundation Essentials Plus
- B. vSphere Standard
- C. vSphere Enterprise
- D. vSphere Enterprise Plus

**Answer:** D

#### NEW QUESTION 257

A small company wants to use VMware products for its production systems. The system administrator needs to recommend a solution that will deliver High Availability to the company's production applications.

What is minimum vSphere offering that will support this requirement?

- A. vSphere Essentials
- B. vSphere Essentials Plus
- C. vSphere Hypervisor
- D. vSphere Standard

**Answer:** B

#### NEW QUESTION 261

VMware vSphere 6.x provides which three capabilities? (Choose three.)

- A. Data center extension
- B. Manage virtual machines with simple and intuitive tools
- C. Perform live workload migrations
- D. Zero data center clonw time
- E. Predictive analytics

**Answer:** BCE

#### NEW QUESTION 263

An administrator is only able to see the Health Badge when using the vRealize Operations user interface. What is the likely cause of this behavior?

- A. The vRealize Operations Foundation License is in use.
- B. The vmware-sps service failed to start.
- C. The vRealize Operations Standard License is in use.
- D. The vmware-rbd-watchdog service failed to star

**Answer:** A

#### NEW QUESTION 264

An administrator has a virtual machine that requires four times the compute resources than other virtual machines on the same ESXi 6.x host. How should the administrator configure the virtual machine settings, in order to be prepared for any resource contention?

- A. Set the shares of the priority virtual machine to High and the rest to Low.
- B. Set the shares of the priority virtual machine to High.
- C. Set the shares of the priority virtual machine to High and the rest to Normal.
- D. Set the shares of the priority virtual machine to Normal and the rest to Lo

**Answer:** A

#### NEW QUESTION 266

A vSphere Administrator observes that no devices are showing up under an iSCSI Storage Adapter. Which three are valid troubleshooting methods? (Choose three.)

- A. Log in to the ESXi Shell, run the vmkping target\_ip command to verify that the VMkernel interface on the host can ping the iSCSI targets
- B. Use the nc -z target\_ip 3260 command to verify that the ESXi host can reach the iSCSI TCP port (default 3260) on the storage array
- C. Verify that the MTU size is lower than 9,000 bytes
- D. Verify that the CHAP authentication settings are correct
- E. If Jumbo Frames are required, verify that packet fragmentation is allowed

**Answer:** ABD

#### NEW QUESTION 270

What is the default load balancing policy for a newly created VMkernel port on a vSphere Distributed Switch?

- A. Route based on originating virtual port ID
- B. Route based on IP Hash
- C. Route based on source mac address
- D. Route based on physical NIC load

**Answer:** A

#### NEW QUESTION 272

An administrator is creating a new vSphere Distributed Switch that will be utilized with a specific vSphere Cluster. The cluster itself contains a mix of ESXi 5.x and 6.x Hosts.

Which Distributed Switch version should be created to support this configuration?

- A. Distributed Switch: 6.0.0
- B. Distributed Switch: 5.0.0
- C. Distributed Switch: 5.1.0
- D. Distributed Switch: 5.5.0

**Answer:** B

#### NEW QUESTION 275

A vSphere administrator needs to backup a virtual machine that has a Microsoft SQL Server Database installed. Which solution allows for an application quiesce to occur during backup?

- A. VMware vCenter Converter
- B. VMware vCenter Site Recovery Manager
- C. VMware vSphere Replication
- D. VMware vSphere Data Protection Advanced

**Answer:** D

#### NEW QUESTION 278

Which three features can be enabled for a new host cluster? (Choose three.)

- A. Storage Distributed Resource Scheduling
- B. High Availability
- C. Fault Tolerance
- D. Distributed Resource Scheduling
- E. Virtual SAN

**Answer:** BDE

#### NEW QUESTION 279

When modifying a vApp, which two vSphere entities can be added? (Choose two.)

- A. A resource pool
- B. A network pool
- C. A vApp

D. A folder

**Answer:** AB

#### NEW QUESTION 282

A High Availability (HA) cluster is configured to respond to a given number of host failures. The cluster contains virtual machines configured with these settings:

- VM1 has a 1GHz CPU reservation and no Memory reservation
  - VM2 has a 2GHz CPU reservation and no Memory reservation
  - VM3 has no CPU reservation and no Memory reservation
- Given this information, what is the correct slot size for the cluster?

- A. The CPU Reservation should be set to 32MHz and the memory reservation should be set to 32MB plus memory overhead.
- B. The CPU reservation should be set to 1 GHz and the memory reservation should be set to 0MB plus memory overhead.
- C. The CPU reservation should be set to 2 GHz, and the memory reservation should be set to 0MB plus the virtual machine memory overhead.
- D. The CPU reservation should be set to 2 GHz, and the memory reservation should be set to 32MB, plus the virtual machine memory overhead.

**Answer:** C

#### NEW QUESTION 284

Refer to the Exhibit. An administrator is configuring an ESXi 6.x host to use multiple NICs to resolve a management network redundancy error. After configuring a second NIC, the server is not able to communicate when the primary connection is taken down.

The administrator analyzes the Exhibit shown here.

The exhibit shows two screenshots from the ESXi vSphere Client. The top screenshot is the 'Physical adapters' tab, showing a table of network adapters. The bottom screenshot is the 'Physical network adapter: vmnic0' configuration page, showing the adapter details.

Device	Actual Speed	Configured Speed	Switch	MAC Address	Observed IP ranges	Wake on LAN 1*
<b>Intel Corporation 82545EM Gigabit Ethernet Controller (Copper)</b>						
vmnic0	1000 Mb	Auto negotiate	vSwitch0	00:50:56:03:0a:51	10.0.0.8-10.0.0.11	No
vmnic1	1000 Mb	Auto negotiate	vSwitch0	00:50:56:03:3b:61	10.0.0.8-10.0.0.11	No
vmnic2	Down	Auto negotiate	vSwitch1	00:50:56:03:44:ed	10.0.0.8-10.0.0.11	No
vmnic3	1000 Mb	Auto negotiate	vSwitch1	00:50:56:03:0e:0f	10.0.0.8-10.0.0.11	No
vmnic4	1000 Mb	Auto negotiate	—	00:50:56:03:17:a3	10.0.0.8-10.0.0.11	No

Physical network adapter: vmnic0	
Adapter	Intel Corporation 82545EM Gigabit Ethernet Controller (Copper)
Name	vmnic0
Location	PCI0000:02:00.0
Driver	e1000
Status	

Based on the exhibit, what is the likely cause of the issue?

- A. vmnic4 is not attached to a vSwitch.
- B. vmnic2 is not connected to a physical switch.
- C. E1000 is the incorrect NICDriver for this card.
- D. There is a MAC address conflict on the network

**Answer:** B

#### NEW QUESTION 285

Which vSphere 6 Standard Edition feature will allow an organization to ensure that critical multi-threaded applications have the maximum possible uptime?

- A. Fault Tolerance
- B. High Availability
- C. Distributed Resource Scheduler
- D. App HA

**Answer:** A

#### NEW QUESTION 290

Which three operations occur during a cold migration of a virtual machine? (Choose three.)

- A. The virtual machine disks are moved if the datastore is being changed.
- B. The virtual machine is registered with the destination server.
- C. The source virtual machine is removed from the old hosts.
- D. The virtual machine hardware is upgraded.
- E. The virtual machine files are quiesced prior to the migration.



**Answer:** ABC

#### NEW QUESTION 291

When using vSAN, all the storage characteristics are specified by Storage Policies. Which parameter in vSAN Storage Policies can increase performance in a cache miss situation? (Choose the best answer.)

- A. Number of disk stripes per object
- B. Number of failures to tolerate
- C. Object space reservation (%)
- D. Force provisioning

**Answer:** A

#### NEW QUESTION 292

What field or option is required when creating a VM snapshot? (Choose the best answer.)

- A. Snapshot description
- B. Quiesce guest file system
- C. Snapshot the virtual machine's memory
- D. Snapshot name

**Answer:** D

#### NEW QUESTION 297

Which three tasks can be accomplished using VMware vSphere Update Manager? (Choose three.)

- A. upgrading VMware Tools inside of Virtual Machines
- B. installing VMware Tools
- C. patching / updating ESXi Hosts
- D. upgrading VMware vCenter Server
- E. upgrading ESXi Hosts

**Answer:** BCE

**Explanation:** Update Manager enables centralized, automated patch and version management for VMware vSphere and offers support for VMware ESX/ESXi hosts, virtual machines, and virtual appliances.

With Update Manager, you can perform the following tasks: References:

#### NEW QUESTION 301

What is the maximum number of possible Virtual NICs per VM in vSphere 6.5?

- A. 16
- B. 10
- C. 20
- D. 4

**Answer:** B

#### NEW QUESTION 304

By default, each ESXi 6.x host is provisioned with a certificate from which root certificate authority?

- A. RedHat Certificate Authority
- B. VMware Certificate Authority
- C. DigiCert Certificate Authority
- D. Verisign Certificate Authority

**Answer:** B

#### NEW QUESTION 305

A vSphere Administrator must purge orphaned data in a vCenter Server database. Which option will let the Administrator accomplish this task?

- A. Locate the cleanup\_orphaned\_data\_PostgreSQL.sql script in the vCSA ISO image, copy it to the vCSA filesystem and use the psql utility to run it
- B. Use the vCenter Server Appliance Migration Tool
- C. Enter the following command in the vCSA Shell: /opt/vmware/vpostgres/9.4/bin/psql -U postgres -d VCDB -c 'dropdb VCDB'
- D. Run the less postgresql.conf | grep autovacuum command from the /storage/db/vpostgres/ directory in the vCSA Shell

**Answer:** A

#### NEW QUESTION 309

What is the maximum supported number of vCPU per VM in VMware vSphere 6.5?

- A. 256
- B. 128
- C. 64

D. 32

**Answer:** B

#### NEW QUESTION 312

What load balancing appliance does VMware recommended for deploying a vRealize Log Insight cluster?

- A. VMware NSX Load Balancer
- B. integrated Load Balancer
- C. F5 Big-IP
- D. Citrix NetScaler

**Answer:** B

**Explanation:** You can enable the vRealize Log Insight integrated load balancer (ILB) on a vRealize Log Insight cluster to ensure that incoming ingestion traffic is accepted by vRealize Log Insight even if some vRealize Log Insight nodes become unavailable. You can also configure multiple virtual IP addresses. It is highly recommended that you enable the ILB in a vRealize Log Insight cluster environment.

#### NEW QUESTION 313

An organization has an ESXi 6.x host that contains two resource pools. The host is being relocated to a DRS cluster.

What two actions can be taken to integrate the host into the cluster, and what would happen to the existing ESXi resource pool hierarchy as a result? (Choose two.)

- A. Place all of the host's virtual machines into the DRS cluster root resource pool
- B. The resource pools present on the host will be deleted.
- C. Create a resource pool for the ESXi host's virtual machines and resource pool
- D. The resource pools present on the host will be deleted.
- E. Place all of the host's virtual machines into the DRS cluster root resource pool
- F. The resource pools present on the host will be preserved.
- G. Create a resource pool for the ESXi host's virtual machines and resource pool
- H. The resource pools present on the host will be preserved.

**Answer:** AD

#### NEW QUESTION 314

Which two statements are true about deploying and using vSphere Replication? (Choose two.)

- A. ESXi hosts managed by a single vCenter Server instance require a connection between the two vSphere Replication appliances.
- B. Sites managed by different vCenter Server instances require a connection between the two vSphere Replication appliances.
- C. Sites managed by different vCenter Server instances require the use of Site Recovery Manager and a connection between the two vSphere Replication appliances.
- D. ESXi hosts managed by a single vCenter Server instance require a single vSphere Replication appliance

**Answer:** BD

#### NEW QUESTION 318

An ESXi 6.x host consists logical cores. Hyperthreading is enabled on the host.

What is the maximum number of vCPUs that can be assigned to a virtual machine on this host?

- A. 24
- B. 48
- C. 64
- D. 128

**Answer:** A

#### NEW QUESTION 323

An administrator is attempting to power on a virtual machine, but is unable to do so. Which two reasons are probable causes of the failure? (Choose two.)

- A. Storage access to the virtual machine swap file has been lost.
- B. One of the virtual machine VMDK files is locked.
- C. Virtual machine is running CentOS 7.0 64-bit.
- D. Virtual machine has Hyper-Threading enable

**Answer:** AB

#### NEW QUESTION 325

What two IT infrastructure components are virtualized by vSphere Essentials? (Choose two.)

- A. Networks
- B. Applications
- C. Storage
- D. Management

**Answer:** AC



#### NEW QUESTION 327

An administrator attempts to install vCenter Single Sign-On Server. The installer returns an error message indicating that the installation failed. Prior to the installation, all setup prerequisites were met. The administrator has generated a vCenter Server Single Sign-On support bundle. Which two files should the administrator analyze to determine the cause of the failure? (Choose two.)

- A. Server\utils\logs\imsTrace.log
- B. Server\utils\logs\install.txt
- C. %TEMP%\utils\logs\vminst.log
- D. %TEMP%\vminst.log

**Answer:** AD

**Explanation:** [http://kb.vmware.com/selfservice/microsites/search.do?language=en\\_US&cmd=displayKC&externalId=2033880](http://kb.vmware.com/selfservice/microsites/search.do?language=en_US&cmd=displayKC&externalId=2033880)  
[https://www.vmware.com/support/ws5/doc/intro\\_techsup\\_ws.html](https://www.vmware.com/support/ws5/doc/intro_techsup_ws.html)

#### NEW QUESTION 330

An administrator is using the Host Failures to Tolerate Admission Control Policy for a vSphere High Availability (HA) cluster. When configuring this setting on the cluster, the administrator sees this error message:

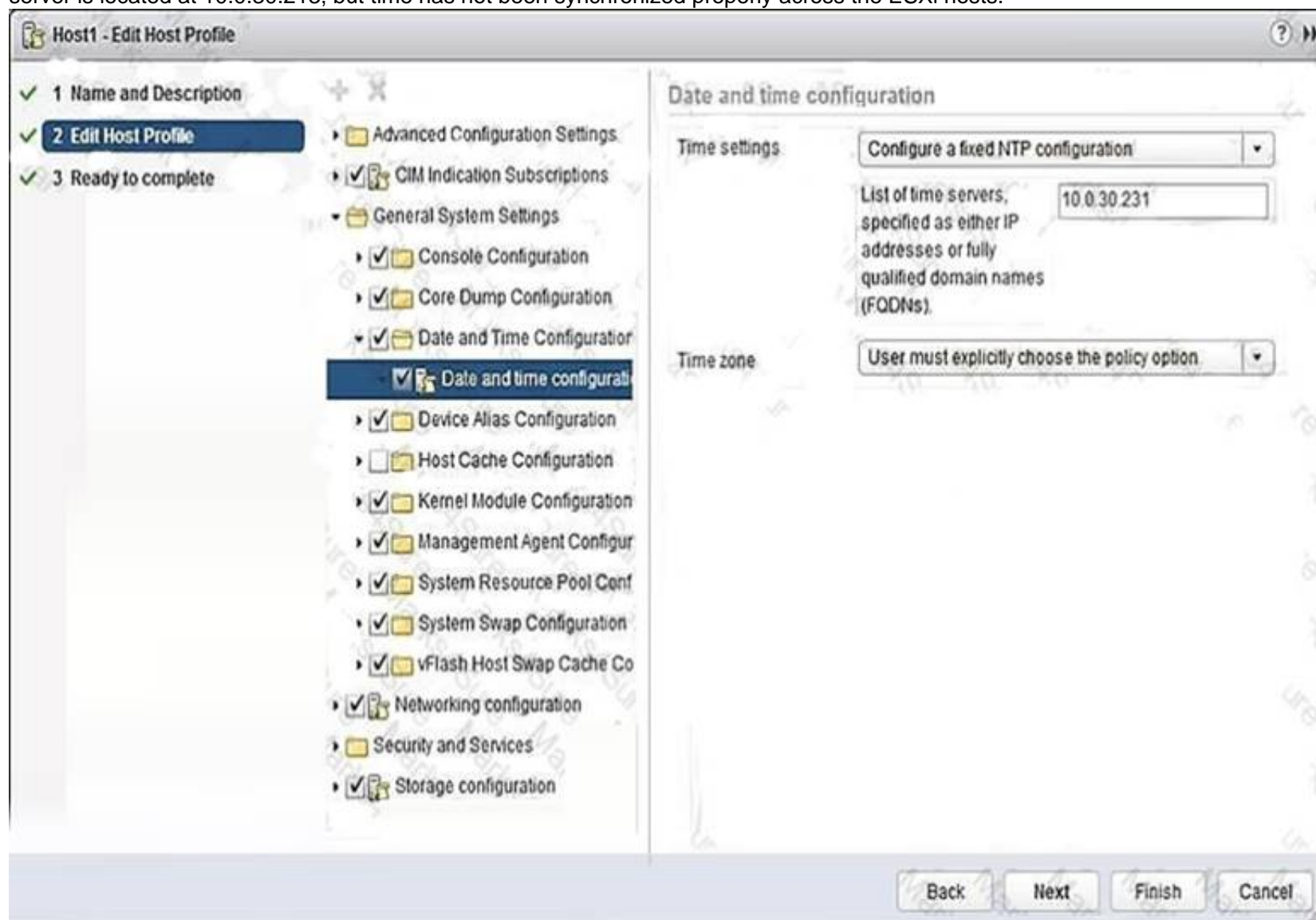
Insufficient resources to satisfy HA failover level on cluster What are two likely causes for the error? (Choose two.)

- A. The hosts in the cluster are disconnected.
- B. A host in the cluster is displaying an HA error.
- C. Distributed Resource Scheduler has not been configured on the cluster.
- D. Virtual Machine Component Protection has not been turned o

**Answer:** AB

#### NEW QUESTION 332

Refer to the Exhibit. An administrator has configured a host profile so that ESXi 6.x hosts will point to the corporate NTP server for time synchronization. The NTP server is located at 10.0.30.213, but time has not been synchronized properly across the ESXi hosts.



The administrator reviews Host Profile settings as shown in the Exhibit. Which two steps are required to resolve the issue? (Choose two.)

- A. Correct the NTP server IP address.
- B. Check the host for host profile compliance.
- C. Remediate the host based on the updated host profile.
- D. Change the NTP server to the FQDN as IP Addresses are not supported

**Answer:** AC

#### NEW QUESTION 336

Which vSphere 6.x storage service provides array-based operations at the virtual disk level?

- A. Local storage
- B. Virtual Volumes

- C. Virtual SAN
- D. Datastores

**Answer:** B

#### NEW QUESTION 341

An administrator logs into the vSphere Web Client, but is unable to see any hosts and clusters. Which two options could fix the problem? (Choose two.)

- A. Verify that the client web browser and vCenter Server are in the same broadcast domain.
- B. Verify that the vCenter Server system is registered with the same Platform Services Controller as the vSphere Web Client.
- C. Log in to the vCenter Server as a user within the Active Directory domain.
- D. Log in to the vSphere Web Client as a user with permissions on the vCenter Server system

**Answer:** BD

#### NEW QUESTION 344

An application running in a virtual machine is experiencing performance issues. When utilizing performance monitoring utilities, it is noted that the CPU Utilization of the application is at 100%.

Which two scenarios are probable causes of the CPU contention for the application? (Choose two.)

- A. There is a network I/O constraint.
- B. There is a storage I/O constraint.
- C. There is insufficient disk space assigned to the virtual machine.
- D. The application is not virtualization aware

**Answer:** AB

#### NEW QUESTION 345

Which three VLAN Tagging modes are available in vSphere 6.x? (Choose three.)

- A. External Switch Tagging
- B. Private VLAN Tagging
- C. Virtual Switch Tagging
- D. VXLAN Tagging
- E. Virtual Guest Tagging

**Answer:** ACE

#### NEW QUESTION 349

An attempt to enable vSphere Fault Tolerance for a powered-on virtual machine fails. Which two scenarios would result in this failure? (Choose two.)

- A. The virtual machine has three vCPUs configured.
- B. The host on which the virtual machine is running has insufficient memory resources.
- C. The virtual machine has insufficient resources to accommodate full reservation plus the overhead memory.
- D. VMware High Availability is enabled on the cluster of which this host is a member

**Answer:** BC

#### NEW QUESTION 353

An administrator attempts to migrate a suspended virtual machine to a newly deployed vSphere 6.x cluster. The compatibility check fails. What condition could cause this behavior?

- A. The new vSphere 6.x cluster is running Intel CPUs instead of AMD CPUs.
- B. A suspended virtual machine cannot be migrated.
- C. The hardware virtualization feature of the CPU is not enabled on the new hosts.
- D. A vSphere Distributed Switch is required to migrate a suspended virtual machine

**Answer:** A

#### NEW QUESTION 354

Which vSphere 6.x feature would you choose for offsite disaster recovery?

- A. Distributed Power Management
- B. vSphere HA
- C. vSphere Data Protection
- D. Dynamic Resource Scheduler

**Answer:** C

#### NEW QUESTION 358

As part of a multisite Single Sign-On (SSO) deployment what two steps are required to ensure that a change to one Single Sign-On instance is propagated to the other instances? (Choose two.)

- A. Schedule a Replication Task on the primary instance
- B. Select the first instance during the installation of subsequent instances

- C. During the installation of each instance choose Linked-Mode
- D. Enable Synchronize to Active Directory on each instance

**Answer:** AC

#### NEW QUESTION 363

During a new vSphere Distributed Switch configuration, where does the Maximum Transmission Unit (MTU) value get modified?

- A. Uplink Settings
- B. Switch Settings
- C. Portgroup Settings
- D. NIC Teaming Settings

**Answer:** B

#### NEW QUESTION 366

Which two High Availability (HA) Cluster admission control policies can help avoid resource fragmentation? (Choose two.)

- A. Define failover capacity by static number of hosts
- B. Define failover capacity by reserving a percentage of the cluster resources
- C. Use dedicated failover hosts
- D. Use Virtual Machine Monitoring

**Answer:** AC

#### NEW QUESTION 371

An administrator has just configured the IP address on an ESXi host from the Direct Console User Interface. How can the configuration be validated as correct without any additional tools?

- A. Add the host to vCenter Server and if it works, then all networking settings are ok.
- B. Select the Test Management Network option from the DCUI.
- C. Connect to the host with the vSphere Client and click the Test Network option.
- D. Use PowerCLI to connect to the host and initiate a network test.

**Answer:** B

#### NEW QUESTION 376

A junior vSphere Administrator complains that their Windows Server 2008 and Windows Server 2012 VMs will not boot. The console displays a Blue Screen of Death (BSOD) after the junior Administrator finished the install. What is the cause?

- A. There are virtual machines with Linux operating systems already running on the host.
- B. The virtual machine does not have VMware Tools installed.
- C. The ESXi host has fewer than three days of "Evaluation Mode" left and needs a license.
- D. The virtual machine was configured with a BusLogic controller instead of LSI Logi

**Answer:** D

#### NEW QUESTION 380

When you add an ESXi 6.x host to a new Cluster, which vSphere object owns the CPU and Memory resources of the hosts?

- A. vCenter Server
- B. Datacenter
- C. Cluster
- D. Host

**Answer:** C

#### NEW QUESTION 385

You want to deploy a vApp and dynamically assign IP addresses without a DHCP server on the network. Which action would you take to accomplish this task?

- A. Enable IP pools.
- B. Configure a local DHCP server in the vApp.
- C. Enable NAT on the vApp router.
- D. Configure the guest OS for workgroup and WIN

**Answer:** A

#### NEW QUESTION 390

Which database is supported for the vCenter Server Appliance 6.5?

- A. PostgreSQL
- B. Oracle
- C. Microsoft SQL Server
- D. DB2

**Answer:** B

#### NEW QUESTION 395

What are two prerequisites for adding RDM disks to a VM? (Choose two.)

- A. LUN used as a RDM cannot be visible to any other underlying hosts in the dust
- B. LUN used as a RDM must be visible to the underlying hosts in the cluster
- C. VM resides on a VMFS datastore
- D. LUN used as a RDM must be hidden to the ESXi host

**Answer:** BC

#### NEW QUESTION 399

What are two possible Startup Actions available to VMs within a vApp? (Choose two.)

- A. None
- B. Guest Shutdown
- C. Power Off
- D. Power On

**Answer:** AD

#### NEW QUESTION 404

Which two files are created when the Take snapshot operation is executed? (Choose two.)

- A. vmsn
- B. .nvram
- C. –delta.vmdk
- D. .lck

**Answer:** AC

#### NEW QUESTION 405

A VMware vSphere Administrator is tasked with enabling Fault Tolerance (FT) on a VM but is unable to. What is the reason that FT cannot be enabled?

- A. The VM has a VMDK that is greater than 2TB.
- B. The VM is configured to use Jumbo Frames.
- C. The VM has 4 vCPU.
- D. The VM is running an operating system that is more than 4 years old.

**Answer:** C

**Explanation:** Enabling fault tolerance on a virtual machine with more than 1 vCPU using the vSphere Client fails. You see the error: “The Virtual Machine has x virtual CPUs and is not supported for Fault Tolerance”

#### NEW QUESTION 408

An administrator has been tasked with enabling High Availability (HA) on a cluster in a vSphere 6.x environment with default settings. The cluster configures properly and there are no errors.

The next day when powering on a virtual machine, an error is presented: Not Enough Failover Resources

Which three scenarios are likely causes of this error message? (Choose three.)

- A. The default VM Monitoring Sensitivity is set too high.
- B. There are not enough datastore heartbeat datastores configured by default.
- C. The default slot size in the cluster is set too high.
- D. There are virtual machines with large CPU reservations.
- E. A host is in maintenance mode for a replacement of a failed Hard Drive

**Answer:** CDE

#### NEW QUESTION 412

When specifying a trigger action for an Alarm Definition, what two alarm state changes are available to be triggered on? (Choose two.)

- A. from normal to warning
- B. from normal to critical
- C. from critical to normal
- D. from critical to warning

**Answer:** AD

#### NEW QUESTION 416

What may be a cause for failure to unmount an NFS datastore?

- A. It has active snapshot files.
- B. It is being used for High Availability (HA) heartbeat.

- C. It is part of a Cluster.
- D. It is managed by Distributed Resource Scheduler (DRS).

**Answer:** A

#### NEW QUESTION 420

An administrator is unable to login to vCenter Server when using the vSphere web client. The administrator successfully accessed vCenter Server using the client earlier the same day. What is the most appropriate first step the administrator should take to resolve this issue?

- A. Verify the web browser being used has Adobe Flash plugin version 11.5 or later
- B. Verify the vCenter Single Sign-On service is running on the vCenter Server
- C. Verify the vSphere Web Server service is running on the vCenter Server
- D. Verify the administrator has permissions configured in vCenter Server

**Answer:** B

#### NEW QUESTION 421

A vSphere Administrator is tasked with implementing a production VMware vSAN cluster and has followed the design and sizing guide to correctly size the environment.

Which two requirements represent valid VMware recommendations? (Choose two.)

- A. A disk group must be composed of more than one cache disk and at least one capacity disk.
- B. All-Flash configurations do not require a caching tier.
- C. A disk group must be composed of one cache disc and at least one capacity disk.
- D. The cache tier should be sized to no less than 10% of the capacity tie

**Answer:** CD

#### NEW QUESTION 424

A developer needs to create a multi-tier development stack for a home lab.

Which vSphere product will support the architecture required for the least software cost?

- A. vSphere Hypervisor
- B. vSphere Essentials
- C. VMware Player
- D. VMware Workstation

**Answer:** A

#### NEW QUESTION 425

An administrator has just completed installing an ESXi 6.x host, but doesn't know what address has been configured. Where is the ESXi host IP address configured?

- A. RVC console
- B. Direct Console User Interface
- C. vSphere Web Client
- D. vSphere Client

**Answer:** B

#### NEW QUESTION 429

An administrator is cloning and configuring five new web server virtual machines. What would be the benefit of configuring resource shares for the new Vms?

- A. To prioritize access to a resource during contention.
- B. To guarantee access to a resource during contention.
- C. To prioritize access to a resource before contention occurs.
- D. To guarantee access to a resource before contention occur

**Answer:** A

#### NEW QUESTION 433

An administrator is configuring the Maximum Transmission Unit value on a vSphere Distributed Switch. Which two options are typical values for ESXi networking? (Choose two.)

- A. 1492
- B. 1500
- C. 9000
- D. 9089

**Answer:** BC

#### NEW QUESTION 438

What two object types can be created inside of vApp? (Choose two.)

- A. vApp



- B. Resource Pool
- C. VM Folder
- D. Virtual Machine

**Answer:** BD

**Explanation:** Reference [https://docs.vmware.com/en/VMware-vSphere/6.5/com.vmware.vsphere.vm\\_admin.doc/GUID-12FDA1A4-621](https://docs.vmware.com/en/VMware-vSphere/6.5/com.vmware.vsphere.vm_admin.doc/GUID-12FDA1A4-621)

#### NEW QUESTION 441

An administrator configures vSphere Replication for a virtual machine and enables multiple point in time (PIT) instances under the recovery settings in the Configure Replication wizard.

Which two statements are correct for vSphere Replication with multiple point in time instances enabled? (Choose two.)

- A. vSphere Replication retains a number of snapshot instances of the virtual machine on the target site based on the retention policy that you specify.
- B. vSphere Replication uses the virtual machine's snapshot instances to define the target site Point in Time instance based on the retention policy that you specify.
- C. vSphere Replication does not support virtual machines with snapshots.
- D. vSphere Replication supports virtual machines with snapshot

**Answer:** AC

#### NEW QUESTION 444

Which two statements are true regarding VMware vSphere Flash Read Cache (vFRC)? (Choose two.)

- A. Cache fills and cache evictions happen in the granularity of a cache block size.
- B. vFRC caches data from both read and write I/Os, but write I/Os are always serviced by the underlying storage.
- C. vFRC caches data from both read and write I/Os, but write I/Os are always serviced by the underlying cache data.
- D. Cache fills and cache evictions happen in the granularity of the disk block size

**Answer:** AB

#### NEW QUESTION 448

What is the minimum version of ESXi required to support VMFS6? (Choose the best answer.)

- A. ESXi 6.0 and later
- B. ESXi 5.0 and later
- C. ESXi 5.5 and later
- D. ESXi 6.5 and later

**Answer:** D

**Explanation:** <https://docs.vmware.com/en/VMware-vSphere/6.5/com.vmware.vsphere.storage.doc/GUID-7552DAD4-1809-4>

#### NEW QUESTION 452

What are three options when configuring encrypted vMotion?

- A. Disabled, Opportunistic, Enabled
- B. Disabled, Automatic, Enabled
- C. Disabled, Opportunistic, Required
- D. Disabled, Automatic, Required

**Answer:** C

**Explanation:** <https://www.brianjgraf.com/2016/10/18/vsphere-6-5-encrypted-vmotions-are-here/>

#### NEW QUESTION 456

An Administrator has been tasked with deploying a new vSphere 6.x environment spanning multiple geographical locations while preserving a single source of authentication?

Which vCenter Server topology does VMware recommend for this scenario?

- A. Multi-Site SSO with:an embedded PSC and vCenter Server instance at the primary locationno PSC at remote locations, vCenter Server instances only
- B. Multi-Site SSO with:An embedded PSC and vCenter Server instance at each location
- C. Multi-Site SSO with:One or more external PSC and vCenter Server instances at each location
- D. Multi-Site with:One or more external PSC at the primary location onlyEmbedded PSC and vCenter Server instances at remote locations

**Answer:** C

#### NEW QUESTION 461

Which two SCSI Bus Sharing modes are supported for a virtual SCSI adapter in vSphere 6.5? (Choose two.)

- A. Shared
- B. Dedicated
- C. Physical
- D. Virtual



**Answer:** CD

**NEW QUESTION 463**

Which of the following options are configurable in a Resource Pool? (Choose two.)

- A. CPU affinity
- B. CPU Shares
- C. Startup/Shutdown order
- D. Memory Limit

**Answer:** BD

**NEW QUESTION 465**

Which two networking connection types can be configured on a virtual switch? (Choose two.)

- A. Virtual machine portgroups
- B. VMkernel services (such as NFS, iSCSI, or vMotion) to the physical network
- C. Web services over the Management Network
- D. NFS and FCoE storage services

**Answer:** AB

**NEW QUESTION 466**

A virtual machine template is accidentally removed from the vCenter Server Inventory. Which method would be used to recover the template back into the environment?

- A. Use the datastore browser to locate the template, then right click and add the .vmtx file to inventory.
- B. Use the datastore browser to locate the template, then right click and add the .vmx file to inventory.
- C. Using the Managed Object Browser and adding the template from the ManagedObjectReference:GuestFileManager object.
- D. Using the Managed Object Browser and adding the template from the ManagedObjectReference:VirtualDiskManager object.

**Answer:** A

**NEW QUESTION 468**

During the installation of ESXi 6.0, the following error message is reported: Hardware Virtualization is not a feature of the CPU, or is not enabled in the BIOS. Which condition would generate this message?

- A. LAHF/SAHF is not enabled in the BIOS.
- B. NX/XD is not enabled in the BIOS.
- C. SSE3 is not enabled in the BIOS.
- D. Hyperthreading is not enabled in the BIO

**Answer:** B

**NEW QUESTION 472**

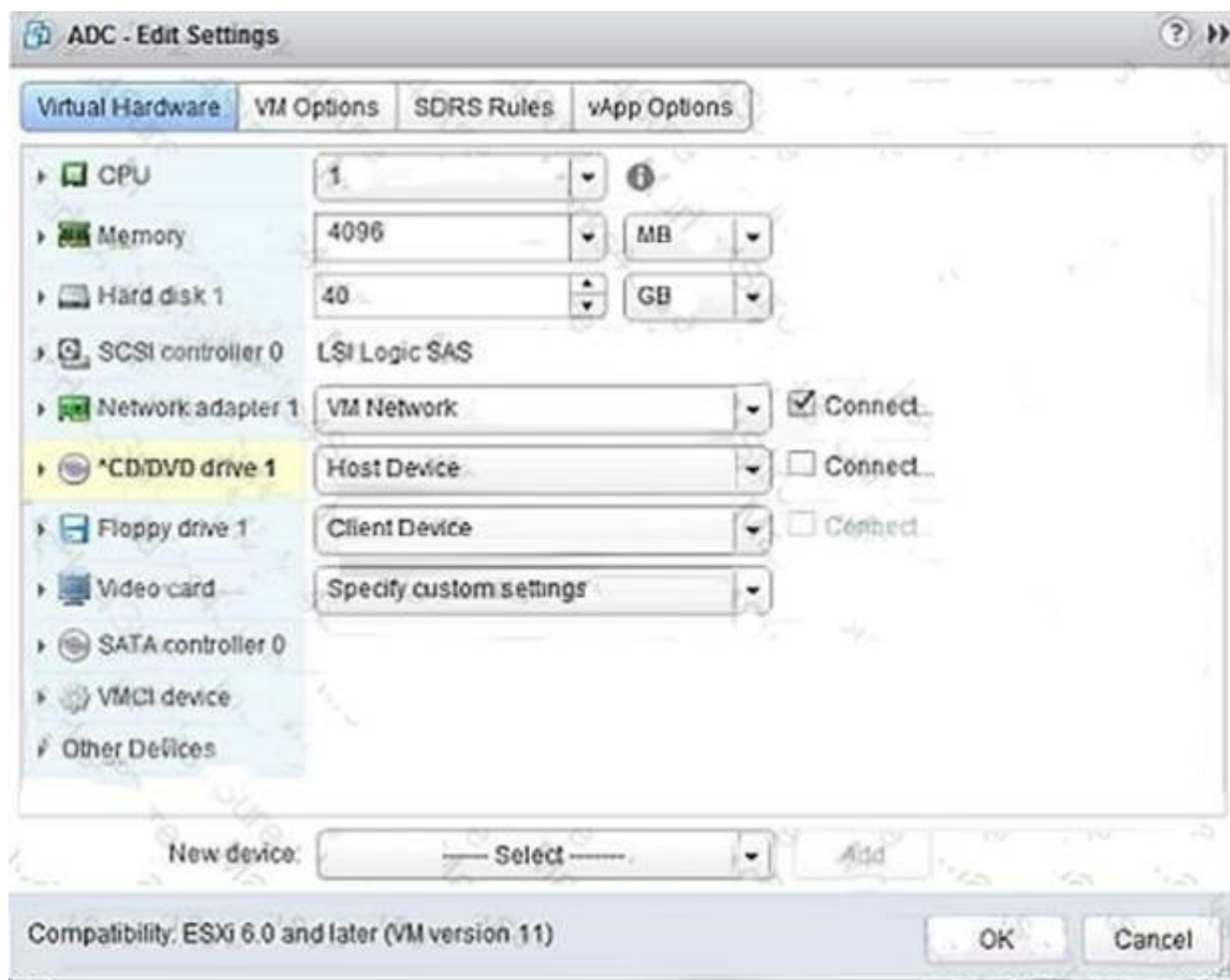
An administrator is performing an interactive installation of ESXi 6.x. Which three options are available for installation? (Choose three.)

- A. DVD
- B. USB
- C. PXE
- D. Scripted
- E. Auto Deploy

**Answer:** ABC

**NEW QUESTION 477**

Refer to the Exhibit. An administrator is installing Windows into a virtual machine. The DVD has been mounted on the Host and configured for the virtual machine as shown in the Exhibit.



Based on the exhibit, when the virtual machine is booted, why would it attempt to search for a PXE server?

- A. The CD/DVD device is not connected.
- B. The ISO is in the incorrect storage location.
- C. The OS minimum requirements have not been met.
- D. The CD/DVD device is not set to Client Device

**Answer:** A

#### NEW QUESTION 481

.....

## THANKS FOR TRYING THE DEMO OF OUR PRODUCT

Visit Our Site to Purchase the Full Set of Actual 2V0-602 Exam Questions With Answers.

We Also Provide Practice Exam Software That Simulates Real Exam Environment And Has Many Self-Assessment Features. Order the 2V0-602 Product From:

<https://www.2passeasy.com/dumps/2V0-602/>

## Money Back Guarantee

### 2V0-602 Practice Exam Features:

- \* 2V0-602 Questions and Answers Updated Frequently
- \* 2V0-602 Practice Questions Verified by Expert Senior Certified Staff
- \* 2V0-602 Most Realistic Questions that Guarantee you a Pass on Your FirstTry
- \* 2V0-602 Practice Test Questions in Multiple Choice Formats and Updatesfor 1 Year