

## 1Z0-632 Dumps

### PeopleSoft PeopleTools 8.5x Implementation Essentials

<https://www.certleader.com/1Z0-632-dumps.html>



NEW QUESTION 1

Which statement is correct about the following PeopleCode statement?

```
class RO_ROWSET extends Rowset
```

- A. RO\_ROWSET is the superclass of the Rowset class
- B. Rowset is the superclass of the RO\_ROWSET class
- C. RO\_ROWSET is an instance of the Rowset class
- D. Rowset is a subclass of the RO\_ROWSET class
- E. RO\_ROWSET is an application class in the Rowset application package

Answer: D

NEW QUESTION 2

At line number 7 in this record definition, the PSU\_ADDRESS\_XXX field name represents a .

T1_CUST_TBL (Record)						
Record Fields		Record Type				
Num	Field Name	Type	Len	Format	Short Name	Long Name
1	CUSTOMER_ID	Char	6	Upper	Customer	Customer
2	DESCR	Char	30	Mixed	Descr	Description
3	DESCRSHORT	Char	10	Mixed	Short Desc	Short Description
4	CUSTOMER_TYPE	Char	1	Upper	Type	Customer Type
5	INDUSTRY_ID	Char	30	Upper	Industry ID	Industry ID
6	PHONE	Char	24	Custm	Phone	Telephone
7	PSU_ADDRESS_XXX	XXX				
	STREET1	Char	30	Mixed	Street	Street (line1)
	CITY	Char	30	Mixed	City	City
	STATE	Char	6	Upper	St	State
	ZIP	Char	10	Num	Zip	Zip Code
	COUNTRY	Char	3	Upper	Cntry	Country
8	CONTRACT_DT	Date	10		Contract Dt	Contract Date
9	TRAINING_UNITS	Nbr	4 1		Units	Training Units

- A. Subpage
- B. Compound field
- C. Subrecord
- D. Derived/Work record
- E. Composite field

Answer: C

NEW QUESTION 3

This exhibit displays your test for the new Student Suggestions page, which has a design error.

Student Suggestions

\*Student ID 2001 Larsen, Mark D

Suggestion Details Find | View all First 1 of 1 Last

Number

☐ Implementer

\*Suggestion Category Other

Course Code

Instructor

\*Suggestion Award PeopleSoft T-Shirt

Size

☐ Small ☐ Medium ☐ Large ☐ Extra Large

\*Description

Save

Return to Search

Previous in List

Next in List

Notify

How should you fix this page?

- A. In the page definition, make Student ID a display control field
- B. In the record definition, make Student ID an alternate search key
- C. In the page definition, make Student ID display-only
- D. In the component definition, select the correct search record
- E. In the record definition, make Student ID the high-level key

Answer: C

NEW QUESTION 4

You have been asked to create a new record for student suggestion review, which includes a field for implemented Flag, which will be a check box on the page. Before creating a new field, you look for an existing field to reuse.

Label ID	Long Name	Short Name	Def
1	APD_APPROVE	Excluded	Ex
2	FLAG	Flag	Flag
3	NUMERIC	Numeric Field	Numeric
4			

FLAG, as shown in the exhibit, is a PeopleSoft delivered field. You can use this field if which statement is true?

- A. The field only requires adding translate values
- B. The field only requires modifying it to be a Y/N table
- C. The field only requires modifying the field format
- D. The field does not require any modifications
- E. The field only requires an additional field label

**Answer:** E

#### NEW QUESTION 5

Assume that you open a PeopleSoft application record definition using Application Designer. Which two of the following statements are false? (Choose two.)

- A. In Application Designer, with a record definition open, you can insert additional fields
- B. Any changes made to the record definition in Application Designer are stored in a PeopleTools table as application metadata
- C. In Application Designer, with a record definition open, you can view transactional application data, such as inventory items provided by a vendor
- D. In Application Designer, with a record definition open, you can add or update transactional application data, such as adding a new inventory item
- E. In Application Designer, with a record definition open, you can modify the key structure of the record definition
- F. In Application Designer, with a record definition open, you can set a record field to be a required field for which an end user must specify a value when adding a new row of transactional data

**Answer:** BF

#### NEW QUESTION 6

You configure embedded pop-up help for a scroll area header or a grid header by .

- A. using the Insert menu to insert a Popup help button on the grid header or scroll area header in place of the Navigation bar
- B. adding a hyperlink or push button to the header linking to the delivered online help
- C. adding a hyperlink or push button to the header linking to your custom online help
- D. selecting Message Catalog Popup on the Label tab of the Grid Properties Dialog box or the Scroll Area Properties dialog box

**Answer:** D

#### NEW QUESTION 7

Which PeopleCode program will take the input student name values and produce the output values?

Input	Output
Dr. Jane Smith, Ph.D.	Dr. Jane Smith
Mark Larsen, B.A.	Mark Larsen
Dr. Gustavo Hinojosa, M.D.	Dr. Gustavo Hinojosa
Vivek Patel, B.S.	Vivek Patel
Jonathan Marsh, M.B.A.	Jonathan Marsh

```

A
&comma_pos = Find(",", &student);
&out = Substring(&student, 1, &comma_pos - 1);

B
&out = LTrim(&student, ",");

C
&out = RTrim(&student, ",");

D
&out = LTrim(&student, ",. ABDMPSh");

E
&comma_pos = Find(",", &student);
&length = Len(&student);
&out = Substring(&student, 1, &length - &comma_pos);

F
&out = RTrim(&student, ",. ABDMPSh");

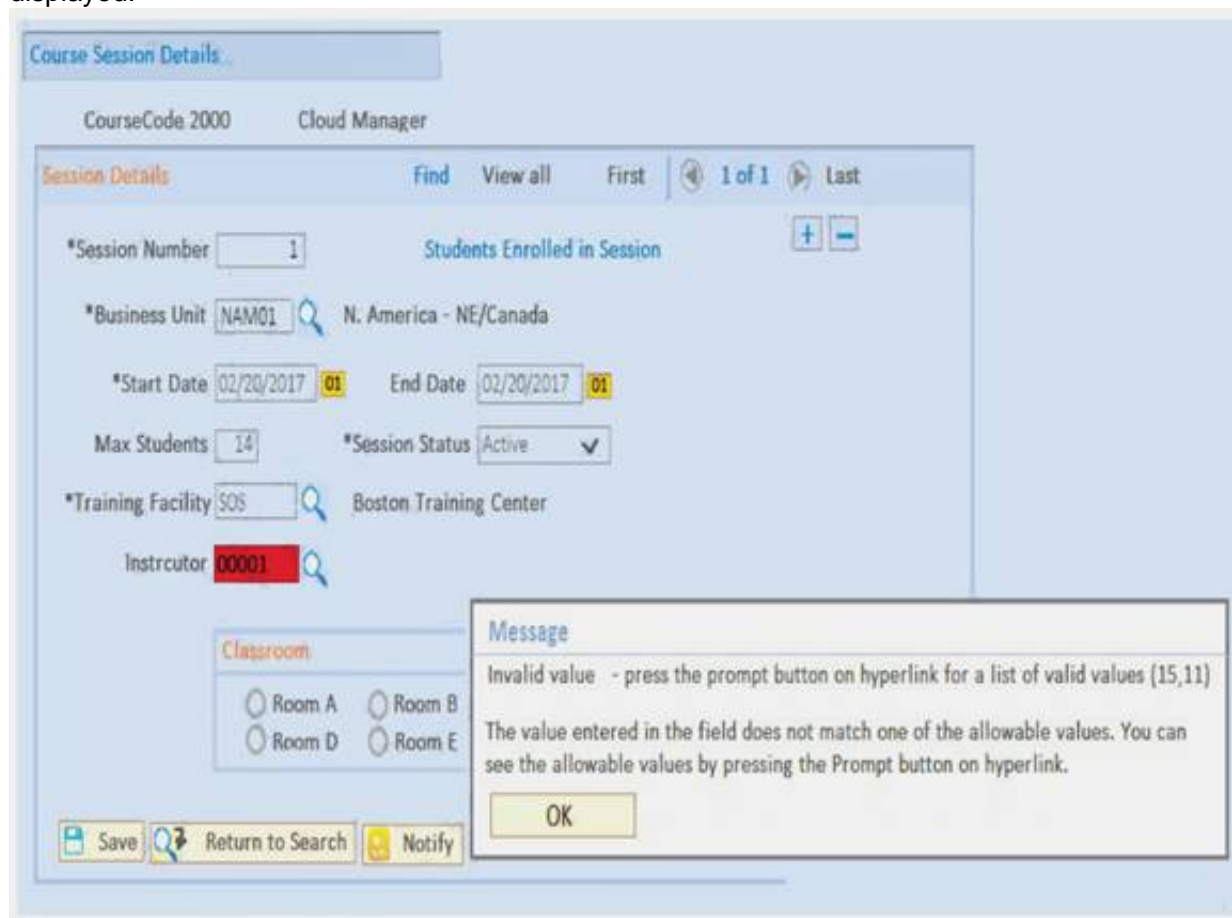
```

- A. Option A
- B. Option B
- C. Option C
- D. Option D
- E. Option E
- F. Option F

**Answer: D**

#### NEW QUESTION 8

You are testing the Course Session Details page. You click the Lookup button for the Instructor field and select a name. When you tab off the field, a message is displayed.



What caused this issue and how do you fix it?

- A. The menu definition associated with this page has the wrong search record; examine the menu definition
- B. The page field definition has the wrong prompt table assigned; examine the page definition
- C. The component definition associated with this page has the wrong search record; examine the component definition
- D. The record field definition has the wrong prompt table assigned; examine the record definition
- E. You selected an incorrect value from the prompt; select a different value

**Answer: C**

#### NEW QUESTION 9

Which statement is correct about developing, modifying, and deploying PeopleSoft fluid applications?

- A. When developing fluid applications, there is a decreased usage and reliance on cascading style sheets (CSS) when compared to classic applications



- B. To develop fluid applications, you will continue to use the same PeopleTools, such as Application Designer, that have been used to develop PeopleSoft applications for decades
- C. For your end users, you will need to implement a separate server infrastructure to deploy fluid applications, keeping it completely separate from the server infrastructure used to deploy classic applications
- D. Any previous application logic you want to port from a classic application to a fluid application will need to be rewritten in Java

**Answer: B**

#### NEW QUESTION 10

In this exhibit, identify two settings on the Internet tab of the Component Properties dialog box that apply to fluid components. (Choose two.)



- A. In the Search Page group box: Primary Action
- B. In the Search Page group box: Instructional Text
- C. In the Pagebar group box: Help Link
- D. In the Toolbar group box: Notify
- E. In the Toolbar group box: Save
- F. In the Multi-Page Navigation group box: Display Folder Tabs (top)

**Answer: AF**

#### NEW QUESTION 10

Which three statements are correct? (Choose three.)

- A. Derived/work fields and variables can be displayed on the page
- B. Derived/work fields and variables provide temporary storage of calculated values
- C. Derived/work fields and record fields provide permanent storage of values
- D. Derived/work fields and record fields can be displayed on the page
- E. Derived/work fields and record fields can include executable PeopleCode programs

**Answer: ADE**

#### NEW QUESTION 12

You are asked to modify the Customer Products Purchased application to provide auto complete on the search page for the customer name. This application uses the following definitions.

- Search record: PSU\_CUST\_TBL
- Record: PSU\_CUST\_PROD
- Page: PSU\_CUST\_PROD
- Component: PSU\_CUST\_PROD

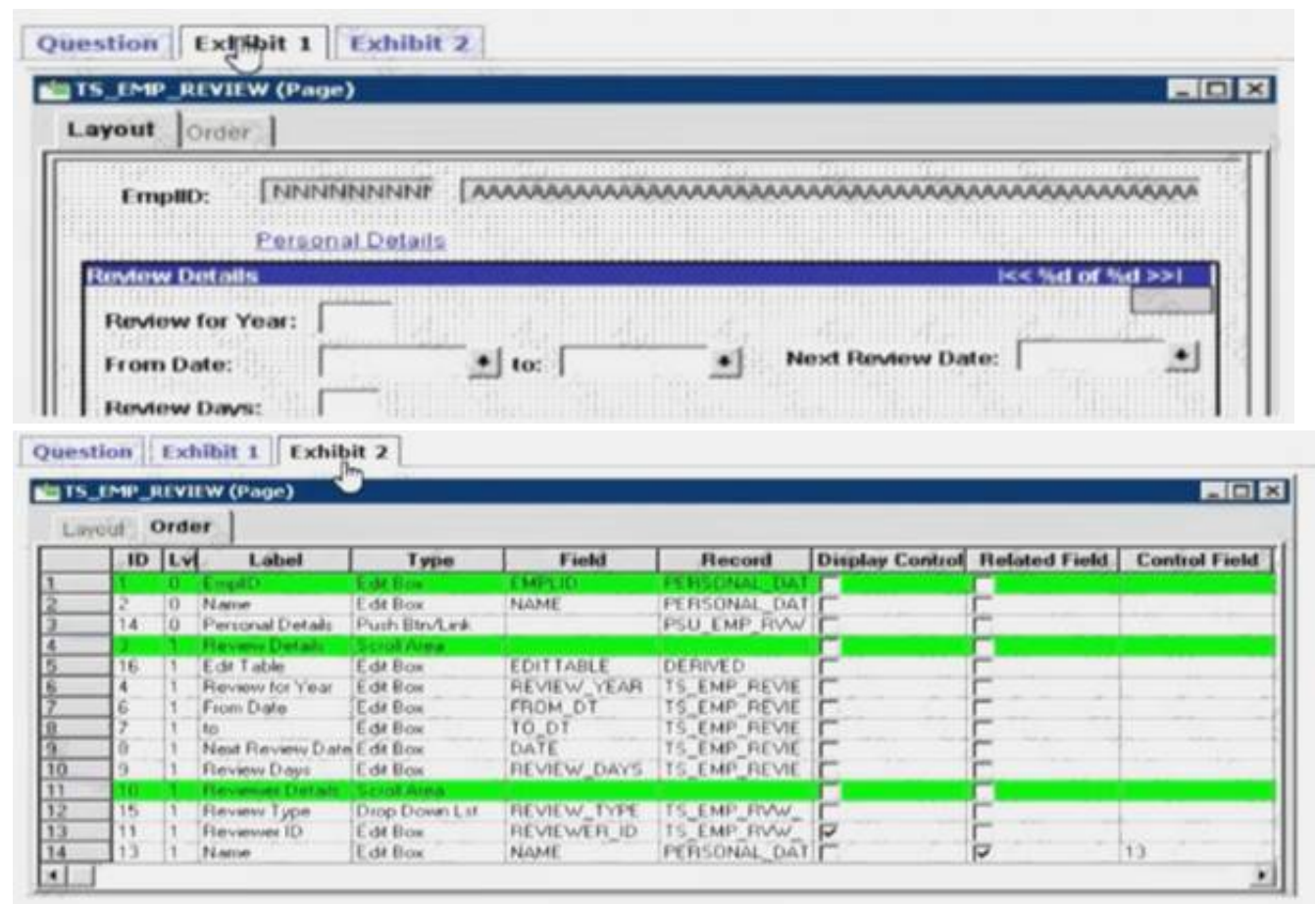
How will you implement this change?

- A. Select the Enable Autocomplete when used in Search Record check box for the DESCR field on the PSU\_ CUST\_PROD record
- B. Select the Enable Autocomplete when used in Search Record check box for the CUSTOMER\_ID field on the PSU\_ CUST\_PROD record
- C. Select the Force Search Processing check box on the Use tab of the Component Properties dialog box for PSU\_CUST\_PROD
- D. Select the Enable Autocomplete when used in Search Record check box for the DESCR field on the PSU\_ CUST\_TBL record
- E. Select the Enable Autocomplete when used in Search Record check box for the CUSTOMER\_ID field on the PSU\_CUST\_TBL record
- F. Select the Show Prompt Button check box for the DESCR field on the PSU\_CUST\_PROD page

**Answer: C**

#### NEW QUESTION 15

View the exhibits. Based on this page layout and page order, select two true statements about this page definition.



- A. The TS\_EMP\_REVIEW page is saved without error  
B. The TS\_EMP\_REVIEW page contains a parent/child design error  
C. The TS\_EMP\_REVIEW page is saved with a related field error  
D. The TS\_EMP\_REVIEW page is saved with a duplicate record field warning

Answer: A

### NEW QUESTION 19

When testing a fluid page, one of your colleagues says that the page suddenly is not rendering as expected. He believes he may have accidentally deleted a group box on the page. Using the developer tools of your browser, you inspect the HTML elements. Which vital structural element of a fluid page must still exist in order for the page to render properly?

- A. <div class="ps\_anchor"... .</div>  
B. <div class="ps\_main"... .</div>  
C. <div class="ps\_box-pagetabs"... .</div>  
D. <div class="ps\_pspagecontainer\_srch" ... .</div>  
E. <div class="ps\_box-group psc\_layout psc\_apps\_content"... .</div>

Answer: E

### NEW QUESTION 23

An end user saves the data after making a change to their personal address, and the system updates the table for that page. In this case, that personal address information is also stored in a table used to generate reports. Upon saving the address, the system also updates the equivalent information stored in the reporting table. What form of maintaining referential integrity has been implemented in this scenario?

- A. Parent-child relationship  
B. Occurs level  
C. Prompt table edit  
D. PeopleCode running a SQLExec statement  
E. Expert entry

Answer: C

### NEW QUESTION 28

.....

## Thank You for Trying Our Product

\* 100% Pass or Money Back

All our products come with a 90-day Money Back Guarantee.

\* One year free update

You can enjoy free update one year. 24x7 online support.

\* Trusted by Millions

We currently serve more than 30,000,000 customers.

\* Shop Securely

All transactions are protected by VeriSign!

**100% Pass Your 1Z0-632 Exam with Our Prep Materials Via below:**

<https://www.certleader.com/1Z0-632-dumps.html>