



CompTIA

Exam Questions N10-007

CompTIA Network+ N10-007

NEW QUESTION 1

- (Exam Topic 1)

A network technician configures a firewall's ACL to allow outgoing traffic for several popular services such as email and web browsing. However, after the firewall's deployment, users are still unable to retrieve their emails. Which of the following would BEST resolve this issue?

- A. Allow the firewall to accept inbound traffic to ports 25, 67, 179, and 3389
- B. Allow the firewall to accept inbound traffic to ports 80, 110, 143, and 443
- C. Set the firewall to operate in transparent mode
- D. Allow the firewall to accept inbound traffic to ports 21, 53, 69, and 123

Answer: B

NEW QUESTION 2

- (Exam Topic 1)

A administrator is troubleshooting a user's intermittent wireless connectivity issue. Other users across the hallway can connect use the wireless network properly. Upon inspection of the connection details, the administrator finds the following:

SSID	Company-WiFi
Signal	5%
SNR	2

Which of the following is MOST likely the cause of the poor wireless connection?

- A. Channel overlap
- B. Overcapacity
- C. Incorrect antenna type
- D. Latency

Answer: C

NEW QUESTION 3

- (Exam Topic 1)

A company has contracted with an outside vendor to perform a service that will provide hardware, software, and procedures in case of a catastrophic failure of the primary datacenter. The Chief Information Officer (CIO) is concerned because this contract does not include a long-term strategy for extended outages. Which of the following should the CIO complete?

- A. Disaster recovery plan
- B. Business continuity plan
- C. Service level agreement
- D. First responder training

Answer: B

NEW QUESTION 4

- (Exam Topic 1)

A network technician needs to set up an access method for Ann, a manager, to work from home. Ann needs to locally mapped corporate resources to perform her job. Which of the following would provide secure access to the corporate resources?

- A. Utilize an SSH connection to the corporate server.
- B. Use TFTP to transfer files to corporate resources.
- C. Allow RDP through an external firewall.
- D. Connect utilizing client-to-site VPN.

Answer: D

NEW QUESTION 5

- (Exam Topic 1)

A network technician recently installed a new server on a network. The technician must ensure the server does not have any unnecessary services running. The IP address of the server is 204.211.38.50

Which of the following commands would allow the technician to make this determination?

- A. nmap
- B. pathping
- C. route
- D. nslookup

Answer: A

NEW QUESTION 6

- (Exam Topic 1)

Which of the following communication media can carry many voice, data, and video channels simultaneously over multiple frequencies?

- A. Broadband
- B. Baseband
- C. Analog modem
- D. CSMA

Answer: A

NEW QUESTION 7

- (Exam Topic 1)

A user checks an IP address using an external website. The address is different than the one the user sees when opening a command prompt and typing in ipconfig/all. The user does not understand why the two tools show different IP addresses. This is BEST explained by the interworking of:

- A. network devices
- B. packet flow
- C. public/private networks
- D. traffic-routing protocols

Answer: C

NEW QUESTION 8

- (Exam Topic 1)

Which of the following should current network performance be compared against to determine network anomalies?

- A. Baseline
- B. Traffic analysis
- C. Packet capture
- D. Logs

Answer: A

NEW QUESTION 9

- (Exam Topic 1)

A network administrator receives a call from the sales department requesting ports 20 and 21 be opened on the company's firewall to allow customers to retrieve a large file. Which of the following should the administrator perform BEFORE making the needed changes? (Choose two.)

- A. Document the reason for the request
- B. Scan the file for malware to protect the sales department's computers
- C. Follow the company's approval process for the implementation
- D. Install a TFTP server for the customers to use for the transfer
- E. Create a honeypot to store the file on for the customers to use
- F. Write the SLA for the sales department authorizing the change

Answer: AC

NEW QUESTION 10

- (Exam Topic 1)

A technician discovers that multiple switches require a major update. Which of the following policies should be followed?

- A. Change management policy
- B. Remote access policy
- C. Acceptable use policy
- D. Memorandum of understanding

Answer: A

NEW QUESTION 10

- (Exam Topic 1)

A technician is troubleshooting network connectivity issues with a remote host. Which of the following tools would BEST inform the technician of nodes between the client and the remote host? (Choose two.)

- A. tracer
- B. ping
- C. tcpdump
- D. pathping
- E. netstat
- F. nslookup
- G. route

Answer: AD

NEW QUESTION 15

- (Exam Topic 1)

Management has requested that services be available within 72 hours of disaster, Budget is a major concern. A contract is signed with a company that has plenty space, and the technician will have the option of putting infrastructure equipment in place. Which of the following BEST describes this business continuity strategy?

- A. Cold site
- B. Differentiate backup

- C. Hot site
- D. Incremental backup
- E. Warm site
- F. Full backup

Answer: A

NEW QUESTION 17

- (Exam Topic 1)

Which of the following is the correct port number for NTP?

- A. 25
- B. 69
- C. 123
- D. 161

Answer: C

NEW QUESTION 20

- (Exam Topic 1)

A network technician is implementing a solution on the network to hide the workstation internal IP addresses across a WAN. Which of the following is the technician configuring?

- A. QoS
- B. DMZ
- C. RIP
- D. NAT

Answer: D

NEW QUESTION 23

- (Exam Topic 1)

A network technician is configuring a firewall access list to secure incoming connections to an email server. The internal address of this email server is 192.168.1.143. The firewall should allow external email servers to send email to the email server. The email server also supports client access via a web browser. Only secure protocols should be used, and only the necessary ports should be open. Which of the following ACL rules should be configured in the firewall's WAN port? (Choose two.)

- A. Permit 192.168.1.143.25
- B. Permit 192.168.1.143.80
- C. Permit 192.168.1.143.110
- D. Permit 192.168.1.143.143
- E. Permit 192.168.1.143.443
- F. Permit 192.168.1.143.587

Answer: EF

NEW QUESTION 26

- (Exam Topic 1)

A network administrator would like to collect information from several networking devices using SNMP. Which of the following SNMP options should a network administrator use to ensure the data transferred is confidential?

- A. authpriv
- B. SHA
- C. MD5
- D. Authentication passphrase

Answer: A

NEW QUESTION 31

- (Exam Topic 1)

A network technician is creating a new subnet for 488 host machines. The technician is told to use a class B address scheme when making the subnet and is instructed to leave as much room as possible for additional subnets of the same size. Which of the following subnets would fulfill these requirements?

- A. 10.5.4.0/22
- B. 10.233.2.0/23
- C. 172.16.0.0/22
- D. 172.18.0.0/23
- E. 192.168.25.0/24

Answer: D

NEW QUESTION 36

- (Exam Topic 1)

Which of the following would allow a device to maintain the same IP address lease based on the physical address of the network card?

- A. MAC address reservation
- B. Static IP address

- C. IP address exclusion
- D. Custom DNS server entry

Answer: A

NEW QUESTION 40

- (Exam Topic 1)

A technician is configuring a printer for a client. The which of the following types to the network, But is unsure how to determine its switch port. Which of the following should the technician do FIRST to locate switch port?

- A. perform a DNS lookup on the server.
- B. Set up a SSH session to the desktop
- C. Reference the ARP table in the router
- D. Configure port security on the switch.

Answer: D

NEW QUESTION 44

- (Exam Topic 1)

A technician is upgrading the firmware on an older KVM switch. The specifications call for a serial port to connect to the computer on one side, and an Ethernet jack to connect to the switch on the other side. Which of the following connectors does the technician need for this cable? (Choose two.)

- A. RG-9
- B. DB-9
- C. RJ-11
- D. DB-25
- E. RJ-45
- F. BNC

Answer: BE

NEW QUESTION 48

- (Exam Topic 1)

A company has completed construction of a new datacenter, and the IT staff is now planning to relocate all server and network equipment from the old site to the new site. Which of the following should the IT staff reference to determine the location of the equipment being moved?

- A. Rack diagrams
- B. Network topology
- C. Standard operating procedures
- D. Wiring documentation

Answer: A

NEW QUESTION 51

- (Exam Topic 1)

A network technician has salvaged several Ethernet cables from a datacenter. The technician attempts to use the cables to connect desktops to the network without success. Which of the following is MOST likely the issue?

- A. The cables have an incorrect pin-out.
- B. The cables are UTP instead of STP.
- C. The cables are Cat 6 instead of Cat 5.
- D. The cables are not plenum rated.

Answer: A

NEW QUESTION 52

- (Exam Topic 1)

A network technician wants to remotely and securely access the desktop of a Linux workstation. The desktop is running remote control software without encryption. Which of the following should the technician use to secure the connection?

- A. SSH in tunnel mode
- B. RDP set to console connection
- C. EAP-PEAP
- D. SFTP

Answer: A

NEW QUESTION 55

- (Exam Topic 1)

A firewall log reports unencrypted console commands coming in on the WAN interface on the router. Inspection, port 23 is found to berouter. Which of the following should be done to the router?

- A. Block all traffic coming in on that interface.
- B. Use Base64 to obfuscate the console traffic.
- C. Implement a pki to authenticate clients.
- D. Disable the Telnet service on the device.

Answer: A

NEW QUESTION 59

- (Exam Topic 1)

A network technician is deploying mobile phones for a company's sales staff. Salespeople frequently travel nationally and internationally to meet with clients, and often have to roam or switch cellular providers. Which of the following standards is the BEST option to fit the requirements?

- A. GSM
- B. TDM
- C. CDMA
- D. PSTN
- E. MIMO

Answer: A

NEW QUESTION 62

- (Exam Topic 1)

Which of the following can be done to implement network device hardening (Select TWO).

- A. Implement spanning tree
- B. Perform VLAN hopping
- C. Patch and update
- D. Perform backups
- E. Enable port mirroring
- F. Change default admin password

Answer: CF

Explanation:

Network devices come with default credentials, the username and password that enables you to log into the device for configuration. Changing default credentials should be the first step in hardening a new device. As with any other system, avoiding common passwords adds security.

Keep network devices up to date. That means upgrading firmware, patching and updating as necessary to close any security gaps exposed over time.

Services on network devices like routers include common things, like Telnet and HTTP access; and also things you don't normally see, like TCP and UDP small services, debugging and testing tools that primarily use ports 20 and lower. If enabled, these services can be used to launch DoS and other attacks. All modern Cisco devices have these disabled; Cisco's hardening rules insist on disabling unnecessary services.

Using secure protocols hardens network devices. Don't use Telnet to access a managed switch or router, for example, but use SSH so that the communication is encrypted.

Disabling unused ports on network devices enhances port security for access control. This includes standard IP ports and device ports, both physical and virtual for the latter.

NEW QUESTION 63

- (Exam Topic 1)

When enabling jumbo frames on a network device, which of the following parameters is being adjusted?

- A. Speed
- B. Duplex
- C. MTU
- D. TTL

Answer: C

NEW QUESTION 67

- (Exam Topic 1)

A network administrator gets a call regarding intermittent network outages across the country. Which of the following should be used to connect to the network so the administrator can troubleshoot this issue from home? (Choose two.)

- A. FTP
- B. SMTP
- C. VPN
- D. SSH
- E. SNMP

Answer: CD

NEW QUESTION 68

- (Exam Topic 1)

A network technician is adding workstation to the enterprise network. After bringing the PCs online. The technician receives reports from random users that they cannot log on. The technician checks and finds everything is functioning for most users. Which of the following is MOST likely causing the problem?

- A. Exhausted DHCP scope
- B. DNS resolving
- C. Duplicate Mac address
- D. Incorrect ACL entry

Answer: C

NEW QUESTION 69

- (Exam Topic 1)

A technician is working on a new machine that has been procured for testing and development. The machine will run a hypervisor and host several operating systems of various types so the development team can test the company's applications in a variety of environments. The technician wants the virtual machines to be available to communicate with each other without leaving the hypervisor. Which of the following is the BEST solution to the problem?

- A. The technician should connect the machine to its own separate switch.
- B. The technician should add a route in each virtual machine to the default gateway.
- C. The technician should configure a virtual switch.
- D. The technician should set up individual routes between the machines.

Answer: C

NEW QUESTION 71

- (Exam Topic 1)

A company finds that many desktops are being reported as missing or lost. Which of the following would BEST assist in recovering these devices?

- A. Asset tracking tags
- B. Motion detectors
- C. Security guards
- D. Computer locks

Answer: D

NEW QUESTION 73

- (Exam Topic 1)

Which of the following is the number of broadcast domain that are created when using an unmanaged 12-port switch?

- A. 1
- B. 2
- C. 6
- D. 12

Answer: B

NEW QUESTION 76

- (Exam Topic 1)

Which of the following ports should a network technician open on a firewall to back up the configuration and operating system files of a router to a remote server using the FASTES method possible?

- A. UDP port 22
- B. TCP port 22
- C. TCP port 25
- D. UDP port 53
- E. UDP port 69

Answer: E

NEW QUESTION 78

- (Exam Topic 1)

An office network consists of one two-port router connected to a 12-port switch. A four-port hub is also connected to the switch. On this particular network, which of the following is the number of collision domain that exist?

- A. 3
- B. 12
- C. 13
- D. 14
- E. 15

Answer: D

NEW QUESTION 79

- (Exam Topic 1)

A network engineer arrives at work and discovers that many users are having problems when attempting to connect to the company network shared drives. The network operations center (NOC) technician just completed server upgrades the night before. To which of the following documents should the NOC technician refer to determine what potentially caused the connectivity problem?

- A. Network maps
- B. Cable management
- C. Release notes
- D. Change management

Answer: D

NEW QUESTION 83

- (Exam Topic 1)

A junior network technician is setting up a new email server on the company network. Which of the following default ports should the technician ensure is open on the firewall so the new email server can relay email?

- A. 23
- B. 25
- C. 110
- D. 143

Answer: B

NEW QUESTION 85

- (Exam Topic 1)

Which of the following devices should a network administrator configure on the outermost part of the network?

- A. Media converter
- B. Switch
- C. Modem
- D. Firewall

Answer: D

NEW QUESTION 90

- (Exam Topic 1)

The process of attempting to exploit a weakness in a network after being given permission by the company is known as:

- A. penetration testing
- B. vulnerability scanning
- C. reconnaissance
- D. social engineering

Answer: A

NEW QUESTION 93

- (Exam Topic 1)

The Chief Information Officer (CIO) has noticed the corporate wireless signal is available in the parking lot. Management requests that the wireless network be changed so it is no longer accessible in public areas, without affecting the availability inside the building. Which of the following should be changed on the network?

- A. Power levels
- B. Overcapacity
- C. Distance limitations
- D. Channel overlap

Answer: A

NEW QUESTION 94

- (Exam Topic 1)

A junior network technician is working in the field and needs to connect to the company/s remote server, however, doing so will require the junior technician to use the public Internet. Because security is a concern which of the following is the BEST method to use?

- A. Telnet
- B. SSH
- C. SFTP
- D. VNC

Answer: B

NEW QUESTION 95

- (Exam Topic 1)

A network administrator wants to increase the confidentiality of the system by hardening the authentication process. Currently, the users log in using usernames and passwords to access the system. Which of the following will increase the authentication factor to three?

- A. Adding a fingerprint reader to each workstation and providing a RSA authentication token
- B. Adding a fingerprint reader and retina scanner
- C. Using a smart card and RSA token
- D. Enforcing a stronger password policy and using a hand geometry scan

Answer: A

NEW QUESTION 100

- (Exam Topic 1)

A small business developed an in-house application that is very sensitive to network latency when communicating between servers. Due to a lack of funds, the business had to build its own network for workstations and servers. Now a network administrator must redesign the network due to performance issues with the application. Which of the following would be the MOST cost effective for the administrator to recommend?

- A. Create Ethernet VLANs
- B. Disable autonegotiation on the servers
- C. Install 10Gb Ethernet NICs in the servers
- D. Install Fibre Channel for the server network

Answer: C

NEW QUESTION 103

- (Exam Topic 1)

A small town is attempting to attract tourists who visit larger nearby cities. A network engineer is asked to implement a network encompassing the five-block town center and nearby businesses. The inclusion of smartphones and portable devices is crucial to the plan. Which of the following is the network engineer being asked to implement?

- A. LAN
- B. PAN
- C. MAN
- D. WAN

Answer: C

NEW QUESTION 107

- (Exam Topic 1)

An analyst is developing a proof of concept of a wireless-based attack as part of a penetration test against an organization's network. As part of the attack, the analyst launches a fake access point matching the SSID of the organization's guest access network. When a user connects to the fake access point, the analyst allows the traffic to flow through the access point to the legitimate site while the data traversing the network is logged for latest analysis and exploitation. Which of the following attacks has the analyst successfully performed in this scenario?

- A. Bluesnarfing
- B. Session hijacking
- C. MAC spoofing
- D. VLAN hopping
- E. Man-in-the-middle

Answer: E

NEW QUESTION 108

- (Exam Topic 1)

A network technician needs to install a new access switch. After installing the new switch, the technician beings to move connections from the old switch to the new switch. The old switch used a GBIC connectors, and the new switch uses an SEF LC with LC connectors. After connecting the SC connector to the SC-to-LC adapter abd plugging it to the switch, the link does not come up as expected. Which of the following should a network technician perform NEXT?

- A. Replace SEP with a new one.
- B. Fall back to the switch.
- C. Transpose the fiber pairs.
- D. Replace multimode with single-mode cable

Answer: C

NEW QUESTION 112

- (Exam Topic 1)

A network engineer is designing a new IDF in an old building. The engineer determines the equipment will fit in a two-post rack, and there is power available for this equipment. Which of the following would be the FIRST issue to remediate?

- A. Air flow and cooling
- B. UPS capability
- C. Circuit labeling
- D. Power redundancy

Answer: A

NEW QUESTION 117

- (Exam Topic 1)

A customer is reporting difficulty connecting some devices after replacing a wireless router with a new wireless 802.11ac router. The SSID, encryption and password are the same as the previous router. A technician goes on-site and notices the devices that are no longer connecting appear to be several years ago. Which of the following is MOST likely the problem?

- A. the password needs to be re-entered.
- B. there is a security type mismatch.
- C. there is insufficient antenna power.
- D. there is a frequency mismatch.
- E. the channel has changed.

Answer: D

NEW QUESTION 121

- (Exam Topic 1)

Which of the following DNS record types allows IPv6 records to be resolved to DNS names?

- A. PTR
- B. A
- C. AAAA
- D. SRV

Answer: C

NEW QUESTION 122

- (Exam Topic 1)

Multiple users are reporting that they are unable to access the network. The ENTIRE network is shown in the diagram. PCs are not statically assigned IP addresses. The following devices will display settings.

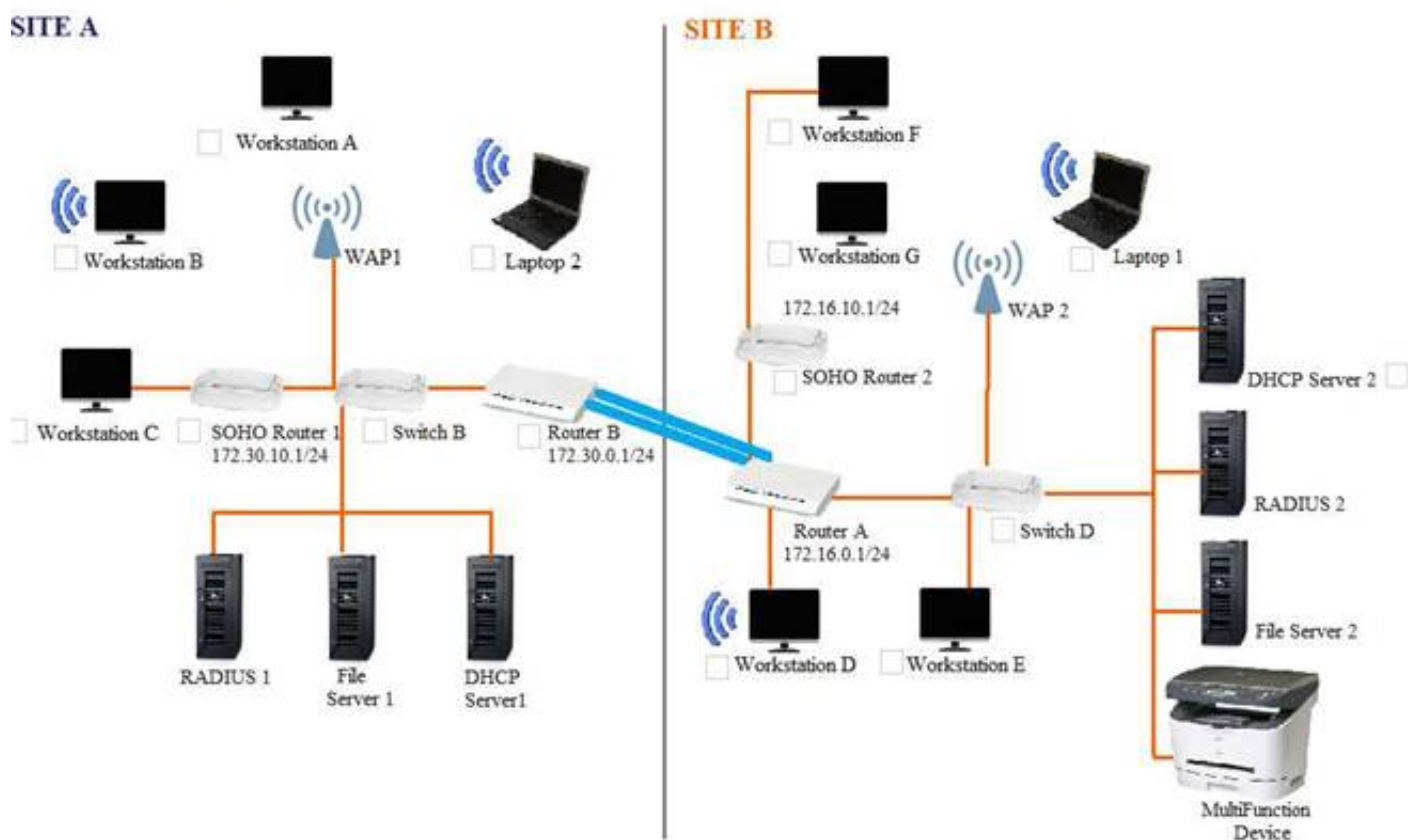
- WorkstationA
- WorkstationB
- WorkstationC
- WorkstationD
- WorkstationE
- WorkstationF
- WorkstationG
- Laptop1
- Laptop2
- DHCP server1
- DHCP server2

Review the settings and select the box in the diagram that identifies the device causing the issue. Only one device can be selected at a time.

After checking the device that is causing the issue, select the second tab in the lower left hand corner. Identify the reason as to why some users are unable to access the network.

Site A and B Network Diagram

Instructions: Only one device can be selected at a time. Please ensure you complete Part 1 and Part 2 of the simulation.



WORKSTATION A

IP Address	172.30.0.10
Netmask	255.255.255.0
Gateway	172.30.0.1

OK

WORKSTATION B

IP Address	172.30.0.14
Netmask	255.255.255.0
Gateway	172.30.0.1

OK

WORKSTATION C

IP Address	169.254.200.67
Netmask	255.255.255.0
Gateway	

OK

WORKSTATION D

IP Address	172.16.0.221
Netmask	255.255.255.0
Gateway	172.16.0.1

OK

WORKSTATION E

IP Address	172.16.0.21
Netmask	255.255.255.0
Gateway	172.16.0.1

OK

WORKSTATION F

IP Address	172.16.10.43
Netmask	255.255.255.0
Gateway	172.16.10.1

OK

WORKSTATION G

IP Address	172.16.10.120
Netmask	255.255.255.0
Gateway	172.16.10.1

OK

LAPTOP 1

IP Address	172.16.0.220
Netmask	255.255.255.0
Gateway	172.16.0.1

OK

LAPTOP 2

IP Address	172.30.0.12
Netmask	255.255.255.0
Gateway	172.30.0.1

OK

DHCP SERVER 1

IP Address	172.30.0.5
Netmask	255.255.255.0
Gateway	172.30.0.1

DHCP Scope	172.30.0.10-250
Gateway	172.30.0.1
DNS Servers	10.200.2.20, 10.200.3.20
DHCP Lease Time	8 days

OK

DHCP SERVER 2

IP Address	172.30.0.5
Netmask	255.255.255.0
Gateway	172.16.0.1

DHCP Scope	172.16.0.10-250
Gateway	172.16.0.1
DNS Servers	10.200.2.20, 10.200.3.20
DHCP Lease Time	8 days

OK

Part 2

Identify the reason as to why some users are unable to access the network.

- A. Workstation(s) are plugged into switch ports configured with half duplex.
- B. The site-to-site router was configured with the incorrect ACL.
- C. DHCP server scope is full and is not providing IP addresses.
- D. WAN and LAN ports are reversed on the router.
- E. STP had disabled some of the ports on the switch.
- F. The NIC driver is not installed.
- G. A wireless client is unable to associate to the AP.

Answer: G

NEW QUESTION 123

- (Exam Topic 1)

A Chief Information Officer (CIO) wants to move some IT services to a cloud service offering. However, the network administrator still wants to be able to control some parts of the cloud service's networking components. Which of the following should be leveraged to complete this task?

- A. IaaS
- B. PaaS
- C. SaaS
- D. DaaS

Answer: B

NEW QUESTION 126

- (Exam Topic 1)

A user reports difficulties connecting a PC to a wired network. The PC connects to an IP phone, which is working correctly. A network technician can verify that other devices successfully connect to the phone. At which of the following layers of the OSI model is the problem MOST likely located?

- A. Network
- B. Physical
- C. Transport
- D. Application

Answer: A

NEW QUESTION 128

- (Exam Topic 1)

A technician is trying to configure a previously owned WAP. The technician successfully logs into the administrative console and attempts to input the IP address on the WAP. However, the WAP is not accepting the command. Which of the following is causing the problem?

- A. The WAP antenna is damaged
- B. The WAP transmitter light is dim
- C. The terminal emulation software is misconfigured
- D. The LWAPP image is installed on the WAP

Answer: C

NEW QUESTION 130

- (Exam Topic 1)

A chief information Officer (CIO) tasks the network engineer with protecting the network from outside attacks. Placing which of the following devices on the network perimeter would provide the MOST security for the system?

- A. Firewall
- B. NGFW
- C. Content filter
- D. IDS/PS

Answer: B

NEW QUESTION 133

- (Exam Topic 1)

A technician logs onto a system using Telnet because SSH is unavailable. SSH is enabled on the target device, and access is allowed from all subnets. The technician discovers a critical step was missed. Which of the following would allow SSH to function properly?

- A. Perform file hashing
- B. Generate new keys
- C. Update firmware
- D. Change default credentials

Answer: B

NEW QUESTION 135

- (Exam Topic 1)

A network administrator is performing a major to the upgrade to the network. Which of the following should the administrator use in a case of a failure?

- A. Baseline report
- B. Vulnerability report
- C. Rollback plan

D. Business continuity plan

Answer: A

NEW QUESTION 136

- (Exam Topic 1)

Which of the following is the SHORTEST way to write 2001:0000:0d58:0000:0000:0095:7565:0001 in proper IPv6 shorthand?

- A. 2001::d58::95:7565:1
- B. 2001:0:d58:0:0:95:7565:1
- C. 2001:0:d58::95:7565:1
- D. 2001:0:0d58::95:7565:1

Answer: C

NEW QUESTION 141

- (Exam Topic 1)

A network technician is troubleshooting an end-user connectivity problem. The network technician goes to the appropriate IDF but is unable to identify the appropriate cable due to poor labeling. Which of the following should the network technician use to help identify the appropriate cable?

- A. Tone generator
- B. Multimeter
- C. OTDR
- D. Loopback adapter

Answer: A

NEW QUESTION 142

- (Exam Topic 1)

A security guard notices an unauthorized individual, who is dressed like technician, has entered a secure area of the hospital with a large group. Which of the following security attacks is taking place?

- A. Evil twin
- B. Social engineering
- C. Insider threat
- D. Phishing

Answer: B

Explanation:

Social engineering attacks aren't considered hacking—at least in the classic sense of the word—although the goals are the same. Social engineering is where people attack an organization through the people in the organization or physically access the organization to get the information they need.

NEW QUESTION 144

- (Exam Topic 1)

A customer cannot access a company's secure website. The company's network security is reviewing the firewall for the server and finds the following output:

Time	Action	Src IP	Src Port	Dst IP	Dst Port
0902	Allow	12.73.15.5	31865	10.5.0.10	80
1005	Deny	12.73.15.5	31866	10.5.0.10	443
1006	Deny	12.73.15.5	31890	10.5.0.10	443

Which of the following changes should be made to allow all customers to access the company's secure website?

- A. Allow any any 10.5.0.10 443
- B. Allow any any 12.73.15.5 443
- C. Allow 10.5.0.10 443 any any
- D. Allow 10.5.0.10 any 10.5.0.10 80

Answer: C

NEW QUESTION 149

- (Exam Topic 1)

A network technician has implemented ACLs to limit access to cloud-based file storage. Which of the following security mechanisms has the technician enforced?

- A. DLP
- B. IDS
- C. WAF
- D. WPA
- E. TPM

Answer: C

NEW QUESTION 150

- (Exam Topic 1)

A computer lab on a campus network was recently reconfigured using recycled network cables. One of the 24 computers in the lab is unable to connect to the network after the upgrade. A network technician successfully uses the cable in question to connect directly to another computer. Which of the following is MOST likely issue with the cable?

- A. The cable is a crossover cable
- B. The cable is rollover cable
- C. The cable has bent pins
- D. The cable is a Cat 5 cable

Answer: A

NEW QUESTION 153

- (Exam Topic 1)

An administrator is moving to a new office. There will be several network runs through the ceiling area of the office. Which of the following is the BEST to utilize in these areas?

- A. Single-mode fiber-optic cabling
- B. Cat 5e-rated cabling
- C. Cat 6-rated cabling
- D. Plenum-rated cabling

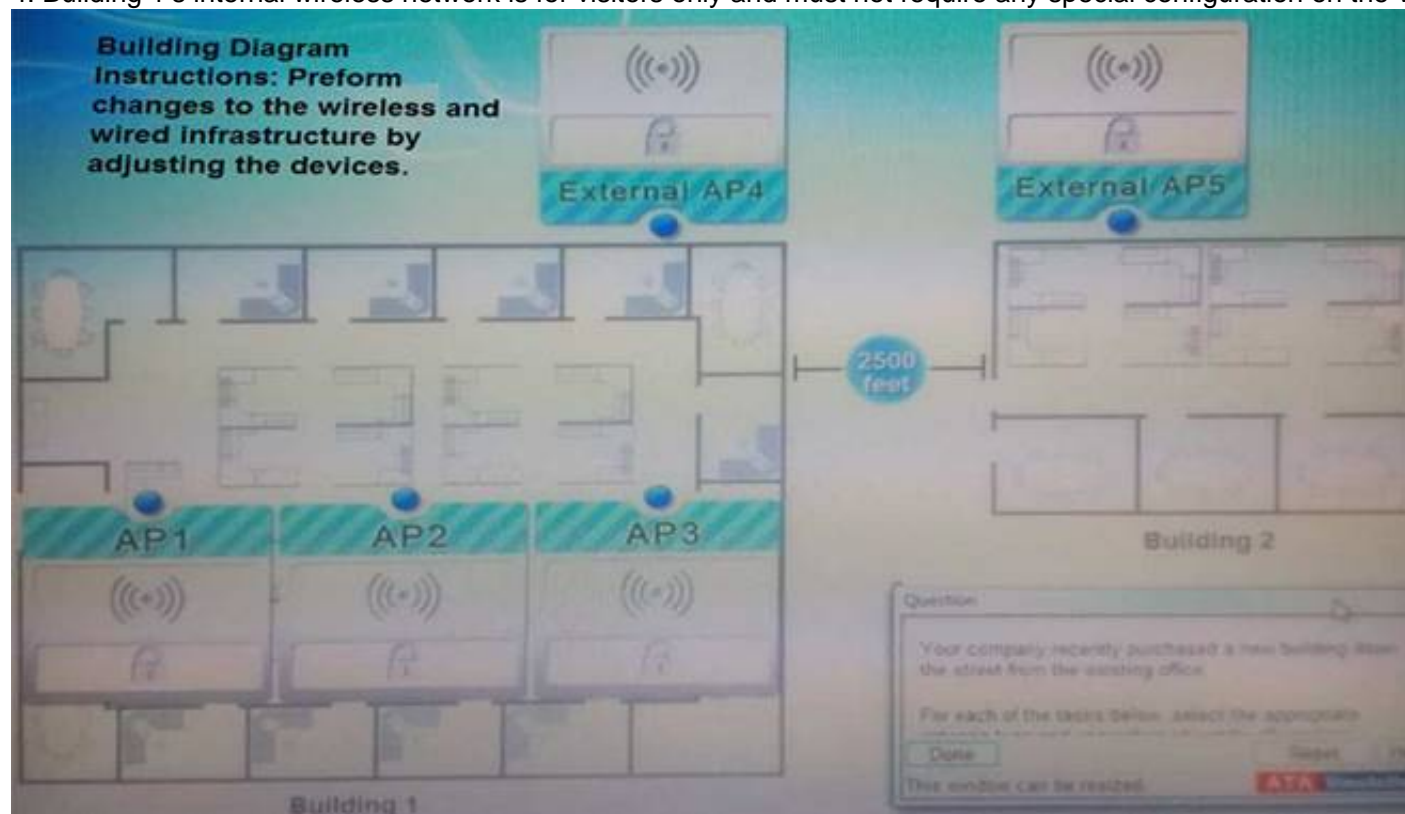
Answer: D

NEW QUESTION 154

- (Exam Topic 1)

Your company recently purchased a new building down the street from the existing office. For each of the tasks below, select the appropriate antenna type and encryption object for all wireless access point (AP).

1. Create an encrypted wireless connection between the two buildings that BEST controls signal propagation, while maximizing security.
2. Restrict the wireless signal generated by the access points (APs) inside Building 1, so that it minimizes broadcast beyond the building.
3. Maximize wireless coverage inside Building 1.
4. Building 1's internal wireless network is for visitors only and must not require any special configuration on the visitor's device to connect.



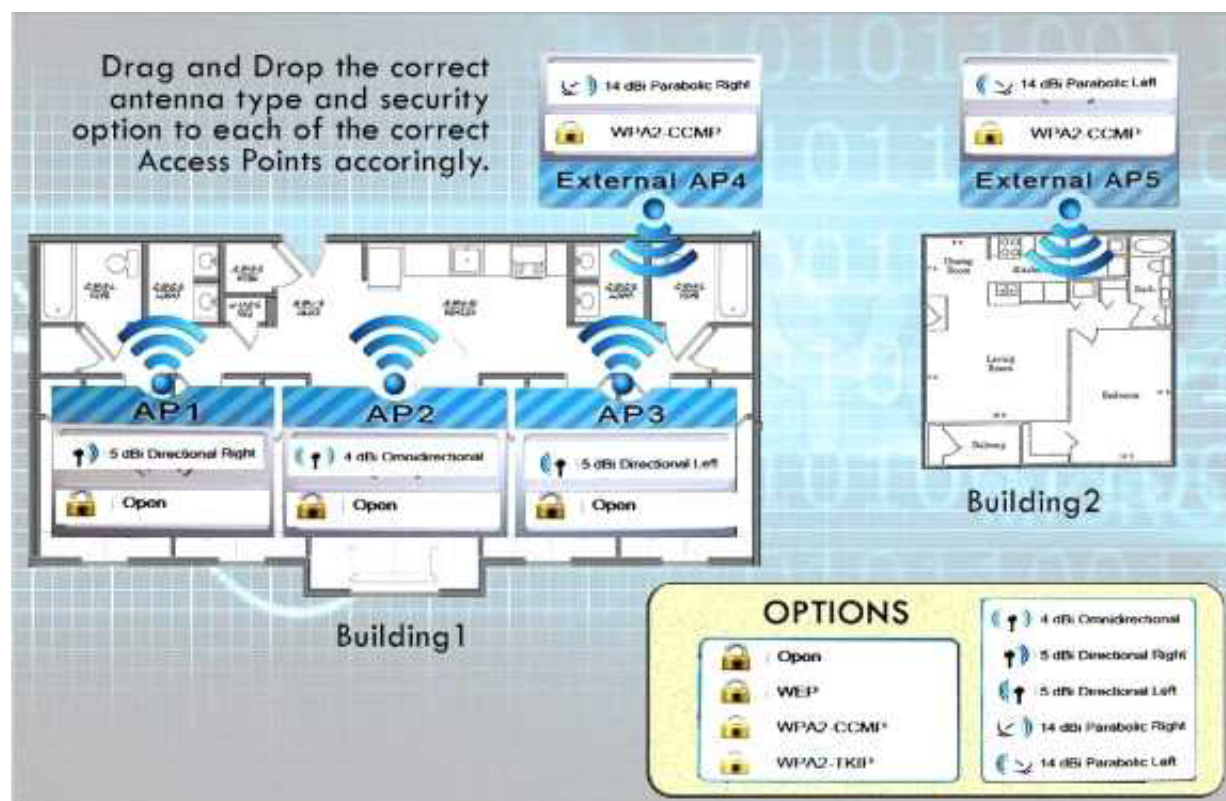
Instructions: When you have completed the simulation, select the Done button to submit.

- A. Mastered
- B. Not Mastered

Answer: A

Explanation:

Answer is as below in image.



NEW QUESTION 155

- (Exam Topic 1)

A second router was installed on a network to be used as a backup for the primary router that works as a gateway. The infrastructure team does not want to change the IP address of the gateway on the devices. Which of the following network components should be used in this scenario?

- A. Loopback IP
- B. Virtual IP
- C. Reserved IP
- D. Public

Answer: B

NEW QUESTION 159

- (Exam Topic 1)

Which of the following will listen on the line to ensure there is no traffic transmitting and implement a back-off timer if a collision occurs?

- A. CSMA/CD
- B. CSMA/CA
- C. MPLS
- D. OSPF

Answer: A

NEW QUESTION 162

- (Exam Topic 1)

A network technician is building a network for a small office. The office currently has cable TV and now requires access to the Internet without adding any cabling other than what is already in place. Which of the following solutions should the technician install to meet these requirements?

- A. DOCSIS modem
- B. Wireless router
- C. DSL modem
- D. Access point

Answer: A

NEW QUESTION 167

- (Exam Topic 2)

Tenants access multiple wireless networks in a building. Users report intermittent connectivity. Which of the following is the MOST likely cause of the problem?

- A. The channels are overlapping with other wireless networks and should be changed.
- B. The SSIDs are incompatible and should be renamed.
- C. The users have incompatible wireless network cards and should upgrade.
- D. The default idle period for logoff is too short and should be changed to a longer limit.

Answer: A

NEW QUESTION 171

- (Exam Topic 2)

Which of the following uses types and codes rather than ports?

- A. EIGRP
- B. ICMP
- C. UDP

D. IPv6

Answer: B

NEW QUESTION 174

- (Exam Topic 2)

Which of the following mediums is circuit switched?

- A. PSTN
- B. ATM
- C. Frame relay
- D. MPLS

Answer: A

NEW QUESTION 176

- (Exam Topic 2)

A company wants to only allow incoming HTTP and HTTPS traffic on their public wireless network. Which of the following port numbers should be the only allowed open ports on the firewall to accomplish this? (Select TWO).

- A. 20
- B. 80
- C. 143
- D. 443
- E. 8080

Answer: BD

NEW QUESTION 177

- (Exam Topic 2)

Which of the following provides the MOST protection against zero day attacks via email attachments?

- A. Anti-spam
- B. Anti-virus
- C. Host-based firewalls
- D. Patch management

Answer: A

NEW QUESTION 179

- (Exam Topic 2)

Which of the following ports would have to be allowed through a firewall to allow SNMP traffic to pass on its default port? (Select TWO).

- A. 22
- B. 23
- C. 143
- D. 161
- E. 162
- F. 8080

Answer: DE

NEW QUESTION 183

- (Exam Topic 2)

Which of the following defines an IP address that is NOT routed on the Internet?

- A. Multicast
- B. Public
- C. Private
- D. Classful

Answer: C

NEW QUESTION 184

- (Exam Topic 2)

Which of the following is a proprietary routing protocol?

- A. RIP
- B. EIGRP
- C. OSPF
- D. BGP

Answer: B

NEW QUESTION 187

- (Exam Topic 2)

Which of the following operates at OSI layer 2 to forward traffic based on the MAC address?

- A. Switch
- B. Proxy Server
- C. Router
- D. VPN Concentrator

Answer: A

NEW QUESTION 188

- (Exam Topic 2)

Matt, an administrator, notices a flood fragmented packet and retransmits from an email server. After disabling the TCP offload setting on the NIC, Matt sees normal traffic with packets flowing in sequence again. Which of the following utilities was he MOST likely using to view this issue?

- A. Spam filter
- B. Protocol analyzer
- C. Web application firewall
- D. Load balancer

Answer: B

NEW QUESTION 191

- (Exam Topic 2)

A company would like all HTTP traffic to filter through a proxy server on port 8080. Which of the following port numbers needs to be redirected through the proxy server to accomplish this?

- A. 20
- B. 80
- C. 143
- D. 443

Answer: B

NEW QUESTION 192

- (Exam Topic 2)

Which of the following is the network topology in which computers connect in a closed circle?

- A. Bus
- B. Mesh
- C. Ring
- D. Star

Answer: C

NEW QUESTION 196

- (Exam Topic 2)

When querying a DNS server for an AAAA record, which of the following is an appropriate response?

- A. 192.168.2.1
- B. 00:f3:82:99:a2:b8
- C. 61.23.168.192.in-addr.arpa
- D. 3ffe:1900:4545:3:200:f8ff:fe21:67cf

Answer: D

NEW QUESTION 198

- (Exam Topic 2)

Which of the following functions would be used to securely monitor and actively manage external connections?

- A. VPN concentrator
- B. HIDS
- C. Load balancer
- D. Packet shaper

Answer: A

NEW QUESTION 201

- (Exam Topic 2)

Which of the following is used to provide hot standby capabilities using paired routers?

- A. CARP
- B. L2TP
- C. PPTP
- D. ISAKMP

Answer: A

NEW QUESTION 205

- (Exam Topic 2)

Which of the following subnet masks would allow for 192.168.0.3 and 192.168.0.240 to be in the same subnet?

- A. 255.255.255.0
- B. 255 255.255.128
- C. 255.255.255.192
- D. 255.255.255.248

Answer: A

NEW QUESTION 209

- (Exam Topic 2)

Which of the following allows a technician to gather information about the operating system?

- A. Domain services
- B. Fingerprinting
- C. Countermeasures
- D. Reconnaissance

Answer: B

NEW QUESTION 214

- (Exam Topic 2)

Which of the following WAP security features offers the STRONGEST encryption?

- A. WPA
- B. WPA2
- C. WEP
- D. Hidden SSID

Answer: B

NEW QUESTION 217

- (Exam Topic 2)

A user is unable to print to a network printer. Which of following is the FIRST step that a technician should take to troubleshoot the issue?

- A. Identify the problem.
- B. Establish a plan of action to resolve the problem.
- C. Establish a theory of probable cause.
- D. Implement preventative measures.

Answer: A

NEW QUESTION 221

- (Exam Topic 2)

Which of the following is based ENTIRELY on using ICMP packets?

- A. Social engineering
- B. NMAP
- C. Buffer overflow attack
- D. Smurf attack

Answer: D

NEW QUESTION 222

- (Exam Topic 2)

A small office home office (SOHO) customer is going to be replacing their switch. The customer also wants to add a WAP in a dropped ceiling; however, there are no power outlets above the drop ceiling, but there is a CAT5e network jack. Which of the following technologies should the new switch have to allow this WAP to be placed where the customer requests, without any other major changes to the environment?

- A. PoE
- B. Layer 3 switching
- C. STP
- D. VLAN

Answer: A

NEW QUESTION 227

- (Exam Topic 2)

An administrator is replacing an existing WAP because the customer is reporting that the connection speeds are too slow. Which of the following should be installed?

- A. 802.11a
- B. 802.11b
- C. 802.11g

D. 802.11n

Answer: D

NEW QUESTION 228

- (Exam Topic 2)

Which of the following is true about an IP address if the first bit is a one and the second bit is a zero?

- A. The address is a Class A address.
- B. The address is a Class B address.
- C. The address is a Class C address.
- D. The address is a Class D address.

Answer: B

NEW QUESTION 229

- (Exam Topic 2)

Something you have, something you are, and something you know are the three tenets of:

- A. Social engineering
- B. Change management
- C. Remote access
- D. Access control

Answer: D

NEW QUESTION 234

- (Exam Topic 3)

Which of the following protocols is used to securely connect to a multi-layer switch?

- A. HTTP
- B. SMTP
- C. SSH
- D. Telnet

Answer: C

NEW QUESTION 237

- (Exam Topic 3)

Kim, a technician, needs to locate a cable in an unorganized wiring closet. Which of the following tools will help her locate the cable?

- A. Protocol analyzer
- B. Cable tester
- C. Toner probe
- D. Punch down tool

Answer: C

NEW QUESTION 240

- (Exam Topic 3)

Which of the following problems is MOST likely to arise when configuring an IPv6 over IPv4 tunnel?

- A. Routing loop
- B. MTU black hole
- C. Framing errors
- D. SYN flood

Answer: B

NEW QUESTION 241

- (Exam Topic 3)

Which of the following is the correct representation of an IPv6 address?

- A. ::
- B. 0:0:0:0:0:0:0:1
- C. 1:2:3:4:AB:CD:EF
- D. 2001::4860:800f::

Answer: A

NEW QUESTION 245

- (Exam Topic 3)

Which of the following methods limits access to a network based on characteristics of the network card?

- A. IP filtering

- B. MAC filtering
- C. Port filtering
- D. Encryption

Answer: B

NEW QUESTION 249

- (Exam Topic 3)

A technician needs to verify an Ethernet run is functioning properly. Which of the following tools should be used?

- A. Protocol analyzer
- B. Crimper
- C. Cable tester
- D. Punch down tool

Answer: C

NEW QUESTION 250

- (Exam Topic 3)

Zach, a network administrator, needs to purchase a new switch to support VoIP phones and wireless access points in a new building. Which of the following features are the MOST important for the new switch to support?

- A. PoE and QoS
- B. LACP and OSPF
- C. 802.1x and 802.11n
- D. NAT and VTP

Answer: A

NEW QUESTION 254

- (Exam Topic 3)

Which of the following IP addresses would be classified as private?

- A. 10.100.200.0
- B. 169.253.10.20
- C. 172.168.5.0
- D. 200.100.25.0

Answer: A

NEW QUESTION 258

- (Exam Topic 3)

A Windows server has a problem after booting up. Kim, a technician, should immediately check the:

- A. history logs.
- B. cron logs.
- C. application logs.
- D. system logs.

Answer: D

NEW QUESTION 259

- (Exam Topic 3)

169.254.1.100 is an IP address which would MOST likely come from which of the following?

- A. CIDR
- B. DHCP
- C. APIPA
- D. DNS

Answer: C

NEW QUESTION 264

- (Exam Topic 3)

company wants the public to be able to connect to the wireless network with minimal security, but not be able to connect to the private internal network. Which of the following firewall rules would BEST accomplish this?

- A. Content filtering on the wireless access point
- B. Allow traffic from the wireless access point
- C. Block traffic from the wireless access point
- D. Packet filtering on the wireless access point

Answer: C

NEW QUESTION 268

- (Exam Topic 3)

An 801.11g wireless access point was configured as follows:

- AP encryption forced to WPA2-AES mode only
- MAC address filtering enabled with the following MAC address in the allow list: 00-ab-29-da-c3-40 Which is true about the above configuration?

- A. Any 802.11b/g compatible client can connect to the wireless network if they support TKIP, the MAC address is 00-ab-29-da-c3-40, and the encryption key is known by the client.
- B. An 802.11a compatible client can connect to the wireless network only if its MAC address is 00- ab-29-da-c3-40 and the encryption key is known by the client.
- C. An 802.11n compatible client can connect to the wireless network only if its MAC address is 00- ab-29-da-c3-40 and the encryption key is known by the client.
- D. Any 802.11g compatible client can connect to the wireless network if the encryption key is known by the client.

Answer: C

NEW QUESTION 269

- (Exam Topic 3)

Lisa, a consultant, is inspecting an office that reports frequent wireless issues. Upon scanning the network broadcasting in the vicinity of the office, seven SSIDs are found. The company's Wi-Fi network and three others all share channel six. Which of the following is MOST likely causing the issue?

- A. Frequency interference
- B. Low signal strength
- C. Standard mismatch
- D. Incorrect channel

Answer: A

NEW QUESTION 272

- (Exam Topic 3)

Which of the following protocols is used to allow multiple hosts to share a common IP address?

- A. HTTPS
- B. ARP
- C. CARP
- D. NAT

Answer: D

NEW QUESTION 273

- (Exam Topic 3)

The software in a virtualized environment that controls resource allocation and allows multiple operating system guests to run on the same physical platform is known as the:

- A. hypervisor.
- B. LPAR.
- C. broker.
- D. VDI.

Answer: A

NEW QUESTION 274

- (Exam Topic 3)

Jeff, a technician, is charged with setting up network monitoring for critical devices in the network. It is important the information be sent securely to the monitoring station. Which of the following protocols will support secure transmission of the data?

- A. SNMP v2
- B. VPN
- C. SYSLOG
- D. SMTP

Answer: A

NEW QUESTION 276

- (Exam Topic 3)

Lisa, a technician, has configured a new switch that is remotely accessed using SSH. The switch is working properly but cannot be accessed remotely. Which of the following items is MOST likely missing in the configuration?

- A. Port speed
- B. Cryptokey
- C. Data VLAN
- D. NAT/PAT

Answer: B

NEW QUESTION 281

- (Exam Topic 3)

Jeff, a user, is having a problem with a POTS line. Which of the following tools would Jeff use to make sure the phone lines have a dial tone?

- A. Loopback plugs

- B. Butt set
- C. Cable certifier
- D. Toner probe

Answer: B

NEW QUESTION 285

- (Exam Topic 3)

Which of the following separates broadcast domains?

- A. Port mirroring
- B. Router
- C. Convergence
- D. Switch

Answer: B

NEW QUESTION 287

- (Exam Topic 3)

Kim, a user, cannot access the network using wireless. Which of the following is MOST likely the cause?

- A. TXRX is reversed
- B. Faulty crossover cable
- C. Incorrect WEP key
- D. A short in the cable pairs

Answer: C

NEW QUESTION 292

- (Exam Topic 3)

A network administrator suspects an employee of using the company's Internet connection to download illegal content. Which of the following can be used to inspect ongoing network traffic?

- A. Syslog server
- B. Toner probe
- C. OTDR
- D. Packet sniffer

Answer: D

NEW QUESTION 296

- (Exam Topic 3)

Which of the following is the prefix for a link-local IPv6 address?

- A. FE80::/10
- B. FF00::/8
- C. 2FFE::/16
- D. FEEF:/12

Answer: A

NEW QUESTION 299

.....

Thank You for Trying Our Product

We offer two products:

1st - We have Practice Tests Software with Actual Exam Questions

2nd - Questons and Answers in PDF Format

N10-007 Practice Exam Features:

- * N10-007 Questions and Answers Updated Frequently
- * N10-007 Practice Questions Verified by Expert Senior Certified Staff
- * N10-007 Most Realistic Questions that Guarantee you a Pass on Your FirstTry
- * N10-007 Practice Test Questions in Multiple Choice Formats and Updatesfor 1 Year

100% Actual & Verified — Instant Download, Please Click
[Order The N10-007 Practice Test Here](#)