



# CompTIA

## Exam Questions N10-007

CompTIA Network+ N10-007

## About ExamBible

*[Your Partner of IT Exam](#)*

## Found in 1998

ExamBible is a company specialized on providing high quality IT exam practice study materials, especially Cisco CCNA, CCDA, CCNP, CCIE, Checkpoint CCSE, CompTIA A+, Network+ certification practice exams and so on. We guarantee that the candidates will not only pass any IT exam at the first attempt but also get profound understanding about the certificates they have got. There are so many alike companies in this industry, however, ExamBible has its unique advantages that other companies could not achieve.

## Our Advances

### \* 99.9% Uptime

All examinations will be up to date.

### \* 24/7 Quality Support

We will provide service round the clock.

### \* 100% Pass Rate

Our guarantee that you will pass the exam.

### \* Unique Gurantee

If you do not pass the exam at the first time, we will not only arrange FULL REFUND for you, but also provide you another exam of your claim, ABSOLUTELY FREE!

#### NEW QUESTION 1

- (Exam Topic 1)

Which of the following would a company place at the edge of its network if it wants to view and control which Internet applications are being used?

- A. VPN concentrator
- B. NGFW
- C. IDS/IPS
- D. Proxy server

**Answer:** B

#### NEW QUESTION 2

- (Exam Topic 1)

Which of the following wireless connection types utilize MIMO on non-overlapping channels? (Choose two.)

- A. 802.11a
- B. 802.11ac
- C. 802.11b
- D. 802.11g
- E. 802.11n

**Answer:** BE

#### NEW QUESTION 3

- (Exam Topic 1)

A UTM is deployed on the external edge of the main corporate office. The office connects to the WAN port of the edge router. The edge router at the main office connects to the remote offices using GRE IPsec tunnels. A network administrator notices that a worm that was not detected by the UTM has spread from the remote sites into the corporate network. The UTM currently has traffic rules applied that should block the port used by the worm. Which of the following steps would MOST likely correct this issue?

- A. Move the UTM onto the LAN side of the network
- B. Enable TLS inspection on the UTM
- C. Enable stateful inspection on the UTM
- D. Configure the UTM to deny encrypted files from being transferred

**Answer:** C

#### NEW QUESTION 4

- (Exam Topic 1)

A technician is troubleshooting a workstation's network connectivity and wants to confirm which switchport corresponds to the wall jack the PC is using. Which of the following concepts would BEST jack the technician?

- A. Consistent labeling
- B. Change management
- C. Standard work instruction
- D. Inventory management
- D. Network baseline

**Answer:** A

#### NEW QUESTION 5

- (Exam Topic 1)

A network technician installs a web server on the firewall. Which of the following methods should the technician implement to allow access to outside users without giving access to the inside network?

- A. VLAN
- B. DMZ
- C. SNMP
- D. NTP

**Answer:** B

#### NEW QUESTION 6

- (Exam Topic 1)

A network technician configures a firewall's ACL to allow outgoing traffic for several popular services such as email and web browsing. However, after the firewall's deployment, users are still unable to retrieve their emails. Which of the following would BEST resolve this issue?

- A. Allow the firewall to accept inbound traffic to ports 25, 67, 179, and 3389
- B. Allow the firewall to accept inbound traffic to ports 80, 110, 143, and 443
- C. Set the firewall to operate in transparent mode
- D. Allow the firewall to accept inbound traffic to ports 21, 53, 69, and 123

**Answer:** B

#### NEW QUESTION 7

- (Exam Topic 1)

A administrator is troubleshooting a user's intermittent wireless connectivity issue. Other users across the hallway can connect use the wireless network properly. Upon inspection of the connection details, the administrator finds the following:

SSID	Company-WiFi
Signal	5%
SNR	2

Which of the following is MOST likely the cause of the poor wireless connection?

- A. Channel overlap
- B. Overcapacity
- C. Incorrect antenna type
- D. Latency

**Answer: C**

#### NEW QUESTION 8

- (Exam Topic 1)

A network technician is planning to update the firmware on a router on the network. The technician has downloaded the file from the vendor's website. Before installing the firmware update, which of the following steps should the technician perform to ensure file integrity?

- A. Perform antivirus and anti-malware scans of the file.
- B. Perform a hash on the file for comparison with the vendor's hash.
- C. Download the file a second time and compare the version numbers.
- D. Compare the hash of the file to the previous firmware update.

**Answer: B**

#### NEW QUESTION 9

- (Exam Topic 1)

A network administrator is redesigning network security after an attack. During the attack, an attacker used open cubicle location to attach devices to the network. The administrator wants to be able to monitor future attack in a safe environment and determine the method of attack. Which of the following should the administrator do to Best meet this requirement?

- A. Create a VLAN for the unused ports and create a honeypot on the VLAN.
- B. Install a BPDU guard on switchports and enable STP
- C. Create a DMZ for public server and secure a segment for the internal network
- D. Install antivirus software and set an ACL on the servers.

**Answer: A**

#### NEW QUESTION 10

- (Exam Topic 1)

To replace a defective UPS, the network administrator must take the switch offline. The administrator wants to be able to perform maintenance UPS in the future without affecting the availability of the attached switch. Which of the following would BEST allow this to happen?

- A. Add a redundant power supply to the switch
- B. Implement stacking on the switches in the rack
- C. Add a second UPS into the rack
- D. Install a power converter for the switch

**Answer: A**

#### NEW QUESTION 10

- (Exam Topic 1)

A technician attempts to replace a switch with a new one of similar model from the same vendor. When the technician moves the fiber and SFP plug, the switch does not completely boot up. Considering that the config files are the same, which of the following is the MOST likely cause of the failure?

- A. Damaged fiber
- B. Corrupted operating system
- C. VLAN mismatch
- D. Bad port

**Answer: B**

#### NEW QUESTION 12

- (Exam Topic 1)

A network technician needs to set up an access method for Ann, a manager, to work from home. Ann needs to locally mapped corporate resources to perform her job. Which of the following would provide secure access to the corporate resources?

- A. Utilize an SSH connection to the corporate server.
- B. Use TFTP to transfer files to corporate resources.
- C. Allow RDP through an external firewall.

D. Connect utilizing client-to-site VPN.

**Answer:** D

#### NEW QUESTION 13

- (Exam Topic 1)

A critical vulnerability is discovered on a network device. The vendor states it has already patched this vulnerability in its current release. Which of the following actions should an administrator take?

- A. Change the default password
- B. Use a firewall in front of the device.
- C. Update the firmware.
- D. Upgrade the configuration.

**Answer:** C

#### NEW QUESTION 16

- (Exam Topic 1)

Which of the following should current network performance be compared against to determine network anomalies?

- A. Baseline
- B. Traffic analysis
- C. Packet capture
- D. Logs

**Answer:** A

#### NEW QUESTION 21

- (Exam Topic 1)

A technician is troubleshooting a point-to-point fiber-optic connection. The technician is at a remote site and has no connectivity to the main site. The technician confirms the switch and the send-and-receive light levels are within acceptable range. Both fiber SFPs are confirmed as working. Which of the following should the technician use to reveal the location of the fault?

- A. OTDR
- B. Light meter
- C. Tone generator
- D. CSU/DSU

**Answer:** A

#### NEW QUESTION 23

- (Exam Topic 1)

A network administrator receives a call from the sales department requesting ports 20 and 21 be opened on the company's firewall to allow customers to retrieve a large file. Which of the following should the administrator perform BEFORE making the needed changes? (Choose two.)

- A. Document the reason for the request
- B. Scan the file for malware to protect the sales department's computers
- C. Follow the company's approval process for the implementation
- D. Install a TFTP server for the customers to use for the transfer
- E. Create a honeypot to store the file on for the customers to use
- F. Write the SLA for the sales department authorizing the change

**Answer:** AC

#### NEW QUESTION 28

- (Exam Topic 1)

A technician is investigating the cause of a network outage. Which of the following documents should be checked to rule out configuration issues?

- A. Change management records
- B. Inventory management
- C. Network log files
- D. Logical diagrams

**Answer:** A

#### NEW QUESTION 30

- (Exam Topic 1)

Which of the following are characteristics of jumbo frames? (Choose two.)

- A. Commonly used on SAN
- B. MTU size greater than 1500
- C. MTU size greater than 10000
- D. Commonly used on IaaS
- E. MTU size greater than 12000

**Answer:** AB

#### NEW QUESTION 34

- (Exam Topic 1)

A network technician has to integrate three legacy industrial devices into the existing wireless network. The devices only support 802.11b and TKIP. Which of the following should the technician do to connect these devices to the wireless network with the restrictive settings while not affecting the performance of the other users? (Select Two).

- A. Create a second SSID that uses WPA personal.
- B. Change the encryption to WPA@ personal.
- C. Enable MAC filtering.
- D. Change the encryption to WPA2 Enterprise.

**Answer:** D

#### NEW QUESTION 38

- (Exam Topic 1)

A disgruntled employee executes a man-in-the-middle attack on the company network. Layer 2 traffic destined for the gateway is redirected to the employee's computer. This type of attack is an example of:

- A. ARP cache poisoning
- B. IP spoofing
- C. amplified DNS attack
- D. evil twin

**Answer:** A

#### NEW QUESTION 43

- (Exam Topic 1)

Which of the following provides the ability to deploy consistent access point configurations from a central location?

- A. Wireless controller
- B. AAA server
- C. WiFi-protected setup
- D. Proxy server
- E. VPN concentrator

**Answer:** A

#### NEW QUESTION 47

- (Exam Topic 1)

A network technician has unable to make a from a datacenter. The technician attempts to use the cables to connect desktops to the network without success. Which of the following is MOST likely the issue?

- A. The cables have an incorrect pin out
- B. The cables UTP instead of STP.
- C. The cables are 6 instead of Cat 5.
- D. The cables plenum rated.

**Answer:** D

#### NEW QUESTION 51

- (Exam Topic 1)

A company recently upgraded all of its printers to networked multifunction devices. Users can print to the new devices, but they would also like the ability to scan and fax files from their computers. Which of the following should the technician update to allow this functionality?

- A. Device software
- B. Printer drivers
- C. Printer firmware
- D. NIC drivers

**Answer:** C

#### NEW QUESTION 56

- (Exam Topic 1)

A technician is allocating the IP address space needed for a remote office. This office will contain the engineering staff with six employees and the digital marketing staff with 55 employees. The technician has decided to allocate the 192.1.0/24 block to the remote office. The engineering staff has been allocated the 192.168./29 subnet. Using the LEAST amount of space possible, which of the following would be the last usable IP address in the engineering subnet?

- A. 192.168.1.62
- B. 192.168.1.63
- C. 192.168.1.70
- D. 192.168.1.71

**Answer:** A

#### NEW QUESTION 60

- (Exam Topic 1)

A forensic first responder arrives at the scene where an employee is suspected to have committed a computer-based crime. Which of the following should the first

responder do FIRST?

- A. Document the scene
- B. Take pictures upon arrival
- C. Secure the area
- D. Implement chain of custody

**Answer:** C

#### NEW QUESTION 63

- (Exam Topic 1)

Which of the following storage network technologies inherently leverages block-level storage?

- A. NAS
- B. SAN
- C. FCoE
- D. iSCSI
- E. FTP

**Answer:** A

#### NEW QUESTION 67

- (Exam Topic 1)

A network administrator would like to collect information from several networking devices using SNMP. Which of the following SNMP options should a network administrator use to ensure the data transferred is confidential?

- A. authpriv
- B. SHA
- C. MD5
- D. Authentication passphrase

**Answer:** A

#### NEW QUESTION 72

- (Exam Topic 1)

A disgruntled employee decides to leak critical information about a company's new product. The employee places keyloggers on the department's computers, allowing the information to be sent out to the Internet. Which of the following attacks is occurring?

- A. Man-in-the-middle
- B. Logic bomb
- C. Insider threat
- D. Social engineering

**Answer:** C

#### NEW QUESTION 73

- (Exam Topic 1)

A network technician is creating a new subnet for 488 host machines. The technician is told to use a class B address scheme when making the subnet and is instructed to leave as much room as possible for additional subnets of the same size. Which of the following subnets would fulfill these requirements?

- A. 10.5.4.0/22
- B. 10.233.2.0/23
- C. 172.16.0.0/22
- D. 172.18.0.0/23
- E. 192.168.25.0/24

**Answer:** D

#### NEW QUESTION 77

- (Exam Topic 1)

A typical cell tower will have microwave and cellular antennas. Which of the following network topologies do these represent? (Choose two.)

- A. Point-to-multipoint
- B. Bus
- C. Point-to-point
- D. Mesh
- E. Peer-peer
- F. Ring

**Answer:** CD

#### NEW QUESTION 80

- (Exam Topic 1)

A network administrator frequently needs to assist users with troubleshooting network hardware remotely, but the users are non-technical and unfamiliar with network devices. Which of the following would BEST help the administrator and users during hands-on troubleshooting?

- A. Logical diagrams



- B. MDF documentation
- C. Equipment labeling
- D. Standard operating procedures

**Answer:** D

#### NEW QUESTION 81

- (Exam Topic 1)

Which of the following would allow a device to maintain the same IP address lease based on the physical address of the network card?

- A. MAC address reservation
- B. Static IP address
- C. IP address exclusion
- D. Custom DNS server entry

**Answer:** A

#### NEW QUESTION 83

- (Exam Topic 1)

A technician is performing a maintenance task on a weekly basis and wants to ensure the task is properly documented and able to be performed by other technician. Which of the following types of documentation should the technician complete?

- A. Standard operating procedure
- B. Work order
- C. Performance baseline
- D. Logical diagram
- E. Change management

**Answer:** A

#### NEW QUESTION 88

- (Exam Topic 1)

A technician is observing brownout issue at a smaller office. At least once a week, the edge switch power cycles. Which of the following should the technician do to resolve the issue?

- A. Install a new switch.
- B. Install a UPS.
- C. Replace the switch uplink cable.
- D. Install a new electrical circuit.

**Answer:** B

#### NEW QUESTION 92

- (Exam Topic 1)

A technician set up a new SOHO network recently. The installed router has four Ethernet ports; however the customer has seven devices that wired connections. Which of the following should the technician do to BEST meet the customer's requirements?

- A. Install a six-port switch
- B. Configure port forwarding on the router
- C. Install WAPs near the devices.
- D. Configure the switchports as EtherChannel ports.

**Answer:** A

#### NEW QUESTION 94

- (Exam Topic 1)

A company has hundreds of nodes on a single subnet and has decided to implement VLANs. Which of the following BEST describes the benefit of this approach?

- A. It segments broadcast domains in the network infrastructure
- B. It provides a faster port to all servers
- C. It provides multiple collision domains on one switchport
- D. It provides multiple broadcast domains within a single collision domain

**Answer:** A

#### NEW QUESTION 97

- (Exam Topic 1)

A company has completed construction of a new datacenter, and the IT staff is now planning to relocate all server and network equipment from the old site to the new site. Which of the following should the IT staff reference to determine the location of the equipment being moved?

- A. Rack diagrams
- B. Network topology
- C. Standard operating procedures
- D. Wiring documentation

**Answer:** A



#### NEW QUESTION 98

- (Exam Topic 1)

A network technician is working on a new switch implementation to expand the network. Which of the following is the BEST option to ensure the implementation goes according to business requirements?

- A. AUP
- B. NDA
- C. SOP
- D. SLA

**Answer:** C

#### NEW QUESTION 103

- (Exam Topic 1)

Which of the following are characteristic of jumbo frames? (Select TWO).

- A. Commonly used on SAN
- B. MTU size greater than 1500
- C. MTU size greater than 10000
- D. Commonly used on IaaS
- E. MTU size greater than 12000

**Answer:** BD

#### NEW QUESTION 107

- (Exam Topic 1)

A network technician is attempting to troubleshoot a connectivity issue. The issue is only reported during the evening hours, and only a single workstation loses connectivity. Which of the following is the MOST likely cause of the issue?

- A. The router has time-based ACL applied for the network segment.
- B. A light source is creating EMI interference, affecting the UTP.
- C. Nightly backups are consuming excessive bandwidth.
- D. The user has violated the AUP, and Internet access has been restricted

**Answer:** D

#### NEW QUESTION 109

- (Exam Topic 1)

A technician is setting up a wireless access point in a coffee shop. The shop is not concerned with security but only wants to allow customers to have access. Which of the following configurations should the technician deploy?

- A. Use a pre-shared key.
- B. Set up EAP.
- C. Configure RADIUS.
- D. Configure MAC filtering.

**Answer:** A

#### NEW QUESTION 113

- (Exam Topic 1)

Which of the following protocols authenticates a PC to the server using a ticket issued to it by the authentication service?

- A. Kerberos
- B. RADIUS
- C. TACACS+
- D. LDAP

**Answer:** A

#### NEW QUESTION 117

- (Exam Topic 1)

Which of the following MUST be implemented to share metrics between routing protocols within the same router?

- A. Routing loop
- B. Routing table
- C. Route redistribution
- D. Dynamic routes

**Answer:** B

#### NEW QUESTION 121

- (Exam Topic 1)

The security manager reports that individual systems involved in policy or security violations or incidents cannot be located quickly. The security manager notices the hostnames all appear to be randomly generated characters. Which of the following would BEST assist the security manager identifying systems involved in security incidents?

- A. Enforce port security to require system authentication

- B. Implement a standardized UNC
- C. Label existing systems with current hostnames
- D. Forward the DHCP logs to the security manager every day

**Answer:** B

#### NEW QUESTION 126

- (Exam Topic 1)

A network technician is diagnosing a time-out issue generated from an end user's web browser. The web browser issues standard HTTP get and post commands to interact with the website. Given this information, the technician would like to analyze the entire TCP handshake of the HTTP requests offline. Which of the following tools would allow the technician to view the handshake?

- A. Packet analyzer
- B. Port analyzer
- C. SNMP traps
- D. Spectrum analyzer

**Answer:** A

#### NEW QUESTION 129

- (Exam Topic 1)

Which of the following should be performed to verify that unnecessary services are disabled on all switches in an environment?

- A. packet capturing
- B. port scanning
- C. Log scanning
- D. Baseline review

**Answer:** B

#### NEW QUESTION 134

- (Exam Topic 1)

An office network consists of one two-port router connected to a 12-port switch. A four-port hub is also connected to the switch. On this particular network, which of the following is the number of collision domain that exist?

- A. 3
- B. 12
- C. 13
- D. 14
- E. 15

**Answer:** D

#### NEW QUESTION 139

- (Exam Topic 1)

A junior network technician is setting up a new email server on the company network. Which of the following default ports should the technician ensure is open on the firewall so the new email server can relay email?

- A. 23
- B. 25
- C. 110
- D. 143

**Answer:** B

#### NEW QUESTION 140

- (Exam Topic 1)

Which of the following devices should a network administrator configure on the outermost part of the network?

- A. Media converter
- B. Switch
- C. Modem
- D. Firewall

**Answer:** D

#### NEW QUESTION 142

- (Exam Topic 1)

Which of the following DNS records needs to be configured for SMTP traffic?

- A. MX
- B. CNAME
- C. AAAA
- D. PTR

**Answer:** A

#### NEW QUESTION 144

- (Exam Topic 1)

The process of attempting to exploit a weakness in a network after being given permission by the company is known as:

- A. penetration testing
- B. vulnerability scanning
- C. reconnaissance
- D. social engineering

**Answer:** A

#### NEW QUESTION 148

- (Exam Topic 1)

A network technician receives a call branch office about problem with its wireless connectivity. The user states the office is hosting a ....meeting that includes some online training with local businesses. The guest users have all brought devices to connect to the guest network at ....Branch office. All users sre connected to a single WAP and are reporting that connections keep drooping and network speeds are unusable. Which of the following is the MOST likely cause of this issue?

- A. DHCP exhaustion
- B. Channel overlapping
- C. interference
- D. Overcapacity

**Answer:** D

#### NEW QUESTION 151

- (Exam Topic 1)

A junior network technician is working in the field and needs to connect to the company/s remote server, however, doing so will require the junior technician to use the public Internet. Because security is a concern which of the following is the BEST method to use?

- A. Telnet
- B. SSH
- C. SFTP
- D. VNC

**Answer:** B

#### NEW QUESTION 153

- (Exam Topic 1)

A network administrator has a monitoring system in place that is currently polling hundreds of network devices at regular intervals. The continuous polling is causing high CPU utilization on the server. Which of the following tasks should the administrator perform to resolve the CPU issue while maintaining full monitoring capabilities?

- A. Remove SNMP polling and configure SNMP traps on each network device
- B. Remove SNMP polling and implement snmpwalk on each network device
- C. Upgrade SNMP to the latest version to mitigate vulnerabilities
- D. Modify SNMP polling to poll only during business hours

**Answer:** A

#### NEW QUESTION 157

- (Exam Topic 1)

Ann, a new employees within a department, cannot print to any of the printers in the department or access any of the resources that other can. However, she can access the internet. The network engineer has confirmed that Ann's has been set up same as the others. There are no access lists restricting Ann's access. Which of the following cloud be the issue for this lack of access?

- A. Duplex/speed mismatch
- B. VLAN mismatch
- C. DNS server issue
- D. DHCP server issue
- E. Spanning tree blocked ports

**Answer:** B

#### NEW QUESTION 160

- (Exam Topic 1)

Which of the following WAN technologies utilizes the concept of virtual circuits and point-multipoint connections?

- A. ISDN
- B. MPLS
- C. PRI
- D. Broadband cable
- E. Frame relay

**Answer:** E

#### NEW QUESTION 162

- (Exam Topic 1)

An employee wishes to use a personal cell phone for work-related purposes, including storage of sensitive company data, during long business trips. Which of the following is needed to protect BOTH the employee and the company?

- A. An NDA ensuring work data stored on the personal phone remains confidential
- B. An AUP covering how a personal phone may be used for work matters
- C. A consent to monitoring policy covering company audits of the personal phone
- D. Real-time remote monitoring of the phone's activity and usage

**Answer:** D

#### NEW QUESTION 167

- (Exam Topic 1)

Which of the following provides two factor authentication?

- A. Username+ password
- B. Smartcard +PIN
- C. Fingerprint +retina scan
- D. Key fob +ID card

**Answer:** B

#### NEW QUESTION 172

- (Exam Topic 1)

After a server outage, a technician discovers that a physically damaged fiber cable appears to be the problem. After replacing the cable, the server will still not connect to the network. Upon inspecting the cable at the server end, the technician discovers light can be seen through one of the two fiber strands. Which of the following should the technician do FIRST to reconnect the server to the network?

- A. Reverse the fiber strands of the cable and reconnect them to the server
- B. Use a TDR to test both strands of a new replacement cable prior to connecting it to the server
- C. Replace the server's single-mode fiber cable with multimode fiber
- D. Move the fiber cable to different port on the switch where both strands function

**Answer:** A

#### NEW QUESTION 173

- (Exam Topic 1)

Based on networks 10.8.16.0/22 and 10.8.31.0/21, which of the following is the BEST summarized CIDR notation?

- A. 10.8.0.0/16
- B. 10.8.0.0/19
- C. 10.8.0.0/20
- D. 10.0.0.0/24

**Answer:** A

#### NEW QUESTION 174

- (Exam Topic 1)

Which of the following protocols do MOST MITM attacks utilize?

- A. ARP
- B. SIP
- C. FTP
- D. SCP

**Answer:** A

#### NEW QUESTION 176

- (Exam Topic 1)

A technician is downloading an ISO from a vendor's website. To ensure the integrity of the download, which of the following should be verified?

- A. File size
- B. Vendor URL
- C. File hashing
- D. Encryption

**Answer:** C

#### NEW QUESTION 180

- (Exam Topic 1)

A network technician is able to connect the switches between to offices, but the offices cannot communicate with each other, as each office uses a different IP addressing scheme. Which of the following devices needs to be installed between the switches to allow communication?

- A. Bridge
- B. Access point
- C. Router
- D. Range extender

**Answer:** C

#### NEW QUESTION 184

- (Exam Topic 1)

An analyst is developing a proof of concept of a wireless-based attack as part of a penetration test against an organization's network. As part of the attack, the analyst launches a fake access point matching the SSID of the organization's guest access network. When a user connects to the fake access point, the analyst allows the traffic to flow through the access point to the legitimate site while the data traversing the network is logged for latest analysis and exploitation. Which of the following attacks has the analyst successfully performed in this scenario?

- A. Bluesnarfing
- B. Session hijacking
- C. MAC spoofing
- D. VLAN hopping
- E. Man-in-the-middle

**Answer:** E

#### NEW QUESTION 185

- (Exam Topic 1)

A technician is investigating a server performance issue. The technician has gathered the server utilization statistics. Which of the following should the technician use to determine which statistics are not in the normal range?

- A. Baseline review
- B. Vulnerability scan
- C. System life-cycle report
- D. Archiving logs

**Answer:** A

#### NEW QUESTION 189

- (Exam Topic 1)

A technician wants to prevent an unauthorized host from connecting to the network via Ethernet. Which of the following is a Layer 2 access control the technician should implement?

- A. Access control lists
- B. Captive portal
- C. WPA2
- D. Port security

**Answer:** D

#### NEW QUESTION 190

- (Exam Topic 1)

Which of the following protocols is associated with a three-way handshake?

- A. UDP
- B. ICMP
- C. GRE
- D. TCP

**Answer:** D

#### NEW QUESTION 192

- (Exam Topic 1)

As part of a transition from a static to a dynamic routing protocol on an organization's internal network, the routing protocol must support IPv4 and VLSM. Based on those requirements, which of the following should the network administrator use? (Choose two.)

- A. OSPF
- B. IS-IS
- C. RIPv1
- D. BGP
- E. VRRP

**Answer:** AB

#### NEW QUESTION 193

- (Exam Topic 1)

A technician is replacing a failed SOHO router for a customer who has an existing, cable modem, and static IP address. The user has a web server that faces the Internet so users can visit and leave comments. Which of the following BEST describes the correct configuration for this customer's requirements?

- A. The modem is placed in bridge mode, the router is placed behind the modem, and the web server is placed behind the router.
- B. The router is placed in bridge mode, the modem is placed behind the router, and the web server is placed behind the modem.
- C. The web server is placed in bridge mode, the router is placed behind the server, and the modem is placed behind the router.
- D. The switch is placed in bridge mode, the modem is placed behind the switch, and the router is placed behind the modem.

**Answer:** A

#### NEW QUESTION 196

- (Exam Topic 1)

Which of the following is used to classify network data for the purpose of providing QoS?

- A. STP
- B. VLANs
- C. SIP
- D. DSCP

**Answer:** D

#### NEW QUESTION 199

- (Exam Topic 1)

While working on a Linux-based OS, a technician experiences an issue accessing servers and some sites by name. Which of the following command-line tools should the technician use to assist in troubleshooting?

- A. dig
- B. iptables
- C. ifconfig
- D. traceroute

**Answer:** A

#### NEW QUESTION 204

- (Exam Topic 1)

A network technician is installing a new SOHO branch office that requires the use of a DOCSIS-compatible. The modem needs to be connected to the ISP's network at the demarc. Which of the following cable type should be used?

- A. UTP
- B. Multimode
- C. Coaxial
- D. Serial

**Answer:** C

#### NEW QUESTION 208

- (Exam Topic 1)

A network engineer is configuring wireless access for guests at an organization. Access to other areas in the organization should not be accessible to guests. Which of the following represents the MOST secure method to configure guest access to the wireless network?

- A. Guests should log into a separate wireless network using a captive portal
- B. Guests should log into the current wireless network using credentials obtained upon entering the facility
- C. The existing wireless network should be configured to allow guest access
- D. An additional wireless network should be configured to allow guest access

**Answer:** A

#### NEW QUESTION 213

- (Exam Topic 1)

A technician is setting up a branch office on a point-to-point connection. Which of the following IP network blocks is the MOST efficient use of IP address space for the router connections between the two sites?

- A. /24
- B. /25
- C. /30
- D. /32

**Answer:** C

#### NEW QUESTION 218

- (Exam Topic 1)

When choosing a type of storage that integrates with the existing network infrastructure, the storage must be easily configurable to share files and can communicate with all existing clients over TCP/IP. Which of the following is the BEST technology for the network administrator to implement?

- A. iSCSI
- B. Fibre Channel
- C. NAS
- D. DAS

**Answer:** C

#### NEW QUESTION 222

- (Exam Topic 1)

A systems administrator has recently purchased and installed a large electronic signage screen for the company's parking garage. The screen's management software was installed on a server with public IP address to allow remote management. The systems administrator is now troubleshooting an issue with the screen displaying unknown, random, and inappropriate messages. Which of the following is MOST effective in resolving this issue?



- A. Changing the management software's default credentials
- B. Disabling unnecessary services from the server and management software
- C. Changing the management software's default port
- D. Replacing the management software's self-signed certificate with a valid certificate

**Answer:** A

#### NEW QUESTION 225

- (Exam Topic 1)

A user reports difficulties connecting a PC to a wired network. The PC connects to an IP phone, which is working correctly. A network technician can verify that other devices successfully connect to the phone. At which of the following layers of the OSI model is the problem MOST likely located?

- A. Network
- B. Physical
- C. Transport
- D. Application

**Answer:** A

#### NEW QUESTION 230

- (Exam Topic 1)

Which of the following WAN technologies provides a guaranteed throughput rate?

- A. DSL
- B. T-1
- C. Cable broadband
- D. Dial-up

**Answer:** B

#### NEW QUESTION 235

- (Exam Topic 1)

A technician is trying to configure a previously owned WAP. The technician successfully logs into the administrative console and attempts to input the IP address on the WAP. However, the WAP is not accepting the command. Which of the following is causing the problem?

- A. The WAP antenna is damaged
- B. The WAP transmitter light is dim
- C. The terminal emulation software is misconfigured
- D. The LWAPP image is installed on the WAP

**Answer:** C

#### NEW QUESTION 238

- (Exam Topic 1)

A company has a web-based application that is used by many different departments. The company has experienced some overload of resources on the database server. The network administrator implements a network device in between the servers and the database. Which of the following BEST describes the purpose of this device?

- A. Content filtering and network analysis
- B. Load balancing and providing high availability
- C. Port sniffing and protocol analysis
- D. Clustering and NIC teaming

**Answer:** B

#### NEW QUESTION 243

- (Exam Topic 1)

Which of the following is networking stand-alone hardware that will permit any WIFI-compliant to connect to a wired network?

- A. Wireless hub
- B. Wireless firewall
- C. Wireless access point
- D. Wireless bridge

**Answer:** C

#### NEW QUESTION 248

- (Exam Topic 1)

Client PCs are unable to receive addressing information from a newly configured interface on a router. Which of the following should be added to allow the clients to connect?

- A. DHCP lease me
- B. IP helper
- C. TTL
- D. DNS record type

**Answer:** B



#### NEW QUESTION 250

- (Exam Topic 1)

A technician has been alerted of incoming HTTP traffic on the LAN segment that should not contain any web server's. The technician has the IP address of the destination host and wants to determine if the socket for HTTP is open. Which of the following should the technician perform?

- A. Baseline assessment
- B. packet analysis
- C. portscan
- D. Patch-level assessment.

**Answer: C**

#### NEW QUESTION 251

- (Exam Topic 1)

A network technician is considering opening ports on the firewall for an upcoming VoIP PBX implementation. Which of the following protocols is the technician MOST likely to consider? (Choose three.)

- A. SIP
- B. NTP
- C. H.323
- D. SMB
- E. ICMP
- F. RTP
- G. IPSec
- H. RDP

**Answer: ACF**

#### NEW QUESTION 256

- (Exam Topic 1)

Which of the following networking devices operates at Layer 1?

- A. Router
- B. Firewall
- C. Hub
- D. Bridge

**Answer: C**

#### NEW QUESTION 258

- (Exam Topic 1)

The backup server connects to a NAS device using block-level storage over Ethernet. The performance is very slow, however, and the network technician suspects the performance issues are network related. Which of the following should the technician do to improve performance?

- A. Utilize UDP to eliminate packet overhead
- B. Turn off MDIX settings on the NAS and server switchports
- C. Enable jumbo frames on the NAS and server
- D. Encapsulate the storage traffic in a GRE tunnel

**Answer: C**

#### NEW QUESTION 261

- (Exam Topic 1)

A network engineer is designing a new network for a remote site. The remote site consists of ten desktop computers, ten VoIP phones, and two network printers. In addition, two of the desktop computers at the remote site will be used by managers who should be on a separate network from the other eight computers. Which of the following represents the BEST configuration for the remote site?

- A. One router connected to one 24-port switch configured with three VLANs: one for the manager's computers and printer, one for the other computers and printer, and one for the VoIP phones
- B. Two routers with each router connected to a 12-port switch, with a firewall connected to the switch connected to the manager's desktop computers, VoIP phones, and printer
- C. One router connected to one 12-port switch configured for the manager's computers, phones, and printer, and one 12-port switch configured for the other computers, VoIP phones, and printer
- D. One router connected to one 24-port switch configured with two VLANs: one for the manager's computers, VoIP phones, and printer, and one for the other computers, VoIP phones, and printer

**Answer: A**

#### NEW QUESTION 265

- (Exam Topic 1)

A company is allowing its employees to use their personal computers, tablets, and IoT devices while at work. However, there are rules and guidelines to which employees must adhere. Which of the following documents applies to these employees?

- A. NDA
- B. SOP
- C. BYOD
- D. SLA

Answer: C

#### NEW QUESTION 268

- (Exam Topic 1)

A customer cannot access a company's secure website. The company's network security is reviewing the firewall for the server and finds the following output:

Time	Action	Src IP	Src Port	Dst IP	Dst Port
0902	Allow	12.73.15.5	31865	10.5.0.10	80
1005	Deny	12.73.15.5	31866	10.5.0.10	443
1006	Deny	12.73.15.5	31890	10.5.0.10	443

Which of the following changes should be made to allow all customers to access the company's secure website?

- A. Allow any any 10.5.0.10 443
- B. Allow any any 12.73.15.5 443
- C. Allow 10.5.0.10 443 any any
- D. Allow 10.5.0.10 any 10.5.0.10 80

Answer: C

#### NEW QUESTION 271

- (Exam Topic 1)

A network technician has implemented ACLs to limit access to cloud-based file storage. Which of the following security mechanisms has the technician enforced?

- A. DLP
- B. IDS
- C. WAF
- D. WPA
- E. TPM

Answer: C

#### NEW QUESTION 274

- (Exam Topic 1)

A network technician needs to separate a web server listening on port 80 from the internal LAN and secure the server from the public Internet. The web server should be accessible to the public Internet over port 80 but not the private LAN. Currently, the network is segmented with a network-based firewall using the following IP addressing scheme on each interface:

Zone	Interface	IP Address
Public	eth0	10.0.0.1/24
DMZ	eth1	10.0.1.1/24
Private	eth2	10.0.2.1/24

Which of the following ones should the technician use to place the web server and which of the following firewall rules should the technician configure?

- A. Place the web server in the public zone with an inbound rule from eth0 interface to accept traffic over port 80 designated to the web server
- B. Place the web server in the DMZ with an inbound rule from eth0 interface to eth1 to accept traffic over port 80 designated to the web server
- C. Place the web server in the private zone with an inbound rule from eth2 interface to eth1 to accept traffic over port 80 designated to the web server
- D. Place the web server in the DMZ with an inbound rule from eth1 interface to eth0 to accept traffic over port 80 designated to the web server

Answer: B

#### NEW QUESTION 277

- (Exam Topic 1)

A computer lab on a campus network was recently reconfigured using recycled network cables. One of the 24 computers in the lab is unable to connect to the network after the upgrade. A network technician successfully uses the cable in question to connect directly to another computer. Which of the following is MOST likely issue with the cable?

- A. The cable is a crossover cable
- B. The cable is rollover cable
- C. The cable has bent pins
- D. The cable is a Cat 5 cable

Answer: A

#### NEW QUESTION 278

- (Exam Topic 1)

A network engineer wants to segment the network into multiple broadcast domains. Which of the following devices would allow for communication between the segments?

- A. Layer 2 switch
- B. Layer 3 switch
- C. Bridge
- D. Load balancer

Answer: B

#### NEW QUESTION 283

- (Exam Topic 1)

A technician has racked a new access switch and has run multimode fiber to a new location. After installing an extended-range 10Gb SFP in the core switch, the technician installed a 10Gb SFP in the access switch and connected the port to the new extension with a fiber jumper. However, the link does not display, and the technician cannot see light emitting from the core switch. Which of the following solutions is MOST likely to resolve the problem?

- A. Swap the fiber pairs in one of the SFPs
- B. Replace the jumpers with single-mode fiber
- C. Set the correct MTU on the new interface
- D. Install an optic that matches the fiber type

**Answer:** B

#### NEW QUESTION 288

- (Exam Topic 1)

Which of the following would allow a network technician to access files on a remote system? (Select TWO).

- A. FTP
- B. TFTP
- C. VLSM
- D. SIP
- E. SMTP
- F. IMAP

**Answer:** AB

#### NEW QUESTION 290

- (Exam Topic 1)

A network administrator has had difficulty keeping track of IP address assignments on networking devices and clients recently. Which of the following is the BEST technology to aid in this scenario?

- A. DNS
- B. DHCP
- C. IPAM
- D. NTP

**Answer:** C

#### NEW QUESTION 295

- (Exam Topic 1)

According to the OSI model, at which of the following layers is data encapsulated into a packet?

- A. Layer 2
- B. Layer 3
- C. Layer 4
- D. Layer 5
- E. Layer 6

**Answer:** B

#### NEW QUESTION 299

- (Exam Topic 1)

A technician notices clients are receiving a 169.254.x.x IP address following the upgrade of a server. Which of the following ports should the technician check on the local server firewall?

- A. ports 20 and 21
- B. ports 67 and 68
- C. ports 80 and 443
- D. port 123 and 8080

**Answer:** B

#### NEW QUESTION 302

- (Exam Topic 1)

A network technician has recently installed new VoiP phones at all employees' desks to support a new SIP cloud solution. However, the technician is unable to make a call from the device after testing. Which of the following should the technician verify?

- A. TCP 433 is allowed.
- B. UDP 1720 is allowed.
- C. UDP 50860 is allowed.
- D. UDP 5061 is allowed.
- E. TCP 8080 is allowed.
- F. TCP 8181 is allowed.

**Answer:** CD

### NEW QUESTION 303

- (Exam Topic 1)

A web application is unable to authenticate customers so they can access their bills. The server administrator has tested the LDAP query but is not receiving results. Which of the following is the NEXT step the server administrator should take to correct the problem?

- A. Check port 636 to see if it being blocked.
- B. Change service port 636 to port 389.
- C. Restart the web server.
- D. Verify the browser is using port 443.

**Answer:** A

### NEW QUESTION 307

- (Exam Topic 1)

A technician wants to deploy a network that will require wireless client devices to prompt for a username and password before granting access to be the wireless network. Which of the following must be configured to implement this solution?

- A. EAP-PEAP
- B. CCMP-AES
- C. WPA2-PSK
- D. TKIP-RC4

**Answer:** A

### NEW QUESTION 308

- (Exam Topic 2)

Which of the following uses types and codes rather than ports?

- A. EIGRP
- B. ICMP
- C. UDP
- D. IPv6

**Answer:** B

### NEW QUESTION 312

- (Exam Topic 2)

Which of the following is an IPv6 address?

- A. 00:14:38:05:7B:E5
- B. 10.10.1.1
- C. 192.168.1.1
- D. 2001:cdba::3257:9652

**Answer:** D

### NEW QUESTION 314

- (Exam Topic 2)

Jeff, an administrator, has just finished installing a new switch and connected two servers with IPs of 192.168.105.20 and .30. The servers are able to communicate with each other, but are unable to reach the Internet. Jeff sees the following information in the switch configuration:

interface VLAN 105

IP address 192.168.105.5 255.255.255.0

Jeff is able to ping the router at 192.168.105.1 from the switch. Which of the following is the MOST likely cause of the problem?

- A. The subnet mask is incorrect.
- B. A routing loop has occurred.
- C. Jeff used a crossover cable to connect the switch to the gateway.
- D. The server is missing default-gateway information.

**Answer:** D

### NEW QUESTION 319

- (Exam Topic 2)

Which of the following cable types have a rated MAXIMUM bandwidth of 100Mbps?

- A. CAT3
- B. CAT5
- C. CAT5e
- D. CAT6

**Answer:** B

### NEW QUESTION 321

- (Exam Topic 2)

A network technician is configuring a wireless network. To avoid interference from other wireless networks in the area, the technician should change which setting?

- A. Channel

- B. SSID
- C. Firewall rule
- D. Encryption

**Answer:** A

#### NEW QUESTION 322

- (Exam Topic 2)

Which of the following is a secure way to connect to a device?

- A. RSH
- B. TFTP
- C. SNMPv2
- D. SFTP

**Answer:** D

#### NEW QUESTION 327

- (Exam Topic 2)

attempting to access a popular website. Which of the following will MOST likely correct the error?

- A. HTTP uses UDP
- B. DNS port 23 needs to be allowed
- C. HTTP needs port 443 allowed
- D. UDP port 53 needs to be allowed

**Answer:** D

#### NEW QUESTION 330

- (Exam Topic 2)

A company has just installed wireless in their office. In one corner of the office building users are not able to establish a connection. Which of the following can be changed on the AP to help resolve this issue?

- A. SSID
- B. Channels
- C. Signal strength
- D. Encryption

**Answer:** C

#### NEW QUESTION 331

- (Exam Topic 2)

A workstation on the network is configured as follows. A user reports that they are unable to print to a device located on a different subnet. Which of the following is the MOST likely problem?

IP address: 172.16.204.12  
Subnet Mask: 255.255.0.0  
Default Gateway: 172.15.204.254  
DNS address: 172.16.204.1  
Broadcast address: 172.16.255.255

- A. DNS address
- B. Subnet mask
- C. Default gateway
- D. Broadcast address
- E. IP address

**Answer:** C

#### NEW QUESTION 332

- (Exam Topic 2)

Use of group accounts should be minimized to ensure which of the following?

- A. Password security
- B. Regular auditing
- C. Baseline management
- D. Individual accountability

**Answer:** D

#### NEW QUESTION 334

- (Exam Topic 2)

Which of the following provides the use of a secure tunnel for telecommuting without manually installing and configuring encryption software?

- A. RDP
- B. SSL VPN
- C. ISAKMP
- D. TLS 2.0

**Answer:** B

**NEW QUESTION 339**

- (Exam Topic 2)

Which of the following provides the MOST protection against zero day attacks via email attachments?

- A. Anti-spam
- B. Anti-virus
- C. Host-based firewalls
- D. Patch management

**Answer:** A

**NEW QUESTION 342**

- (Exam Topic 2)

Which of the following protocols is used to transmit outgoing email?

- A. RDP
- B. NTP
- C. POP3
- D. SMTP

**Answer:** D

**NEW QUESTION 347**

- (Exam Topic 2)

A computer on VLAN 10 with the IP address of 192.168.1.45/27 cannot ping a computer on VLAN 20 with the IP address of 192.168.1.65/27. Which configuration change will allow the PING to be successful?

- A. Replace the router with a Layer 2 switch that supports VLANs
- B. Change VLAN 20 computers Default Gateway to 192.168.1.127/27
- C. Change VLAN 10 computers Default Gateway to 192.168.1.32/27
- D. Allow ICMP to pass through the Router

**Answer:** D

**NEW QUESTION 349**

- (Exam Topic 2)

Kurt, a network technician, has configured a new firewall on the network. Users are reporting errors when attempting to access several websites. Kurt attempts to access several popular websites with no errors, however, he does receive an error when attempting to access a bank website. Which of the following rules would BEST allow access to the bank website?

- A. Allow UDP port 53
- B. Allow TCP port 80
- C. Allow UDP port 340
- D. Allow TCP port 443

**Answer:** D

**NEW QUESTION 352**

- (Exam Topic 2)

Which of the following is characterized by an attacker attempting to map out an organization's staff hierarchy in order to send targeted emails?

- A. Whaling
- B. Impersonation
- C. Privilege escalation
- D. Spear phishing

**Answer:** A

**NEW QUESTION 354**

- (Exam Topic 2)

Which of the following will allow multiple frequencies to be combined?

- A. WiMAX
- B. MPLS
- C. MIMO
- D. Channel bonding

**Answer:** D

**NEW QUESTION 358**

- (Exam Topic 2)

Which of the following defines when Pete, an attacker, attempts to monitor wireless traffic in order to perform malicious activities?

- A. XSS
- B. SQL injection
- C. Directory traversal
- D. Packet sniffing

**Answer:** D

#### NEW QUESTION 361

- (Exam Topic 2)

Which of the following **MUST** be used when securing a VoIP network consisting of private IP addresses?

- A. IPS
- B. Application layer firewall
- C. IDS
- D. An unmanaged switch

**Answer:** B

#### NEW QUESTION 362

- (Exam Topic 2)

After plugging a cable into a computer, a user reports there is no network access. Which of the following tools would the technician **MOST** likely check to verify that the cable was crimped correctly?

- A. Punch down tool
- B. Cable certifier
- C. Loopback plug
- D. Toner probe

**Answer:** B

#### NEW QUESTION 364

- (Exam Topic 2)

Which of the following is the **MOST** economical way for Sandy, a technician, to implement 10- Gigabit Ethernet at a datacenter?

- A. 10GBaseLR
- B. 10GBaseSR
- C. 10GBaseX
- D. 10GBaseT

**Answer:** D

#### NEW QUESTION 367

- (Exam Topic 2)

Which of the following is indicative of an FTP bounce?

- A. Arbitrary IP address
- B. Reverse DNS lookups
- C. Same Port Number
- D. File Transfer Success

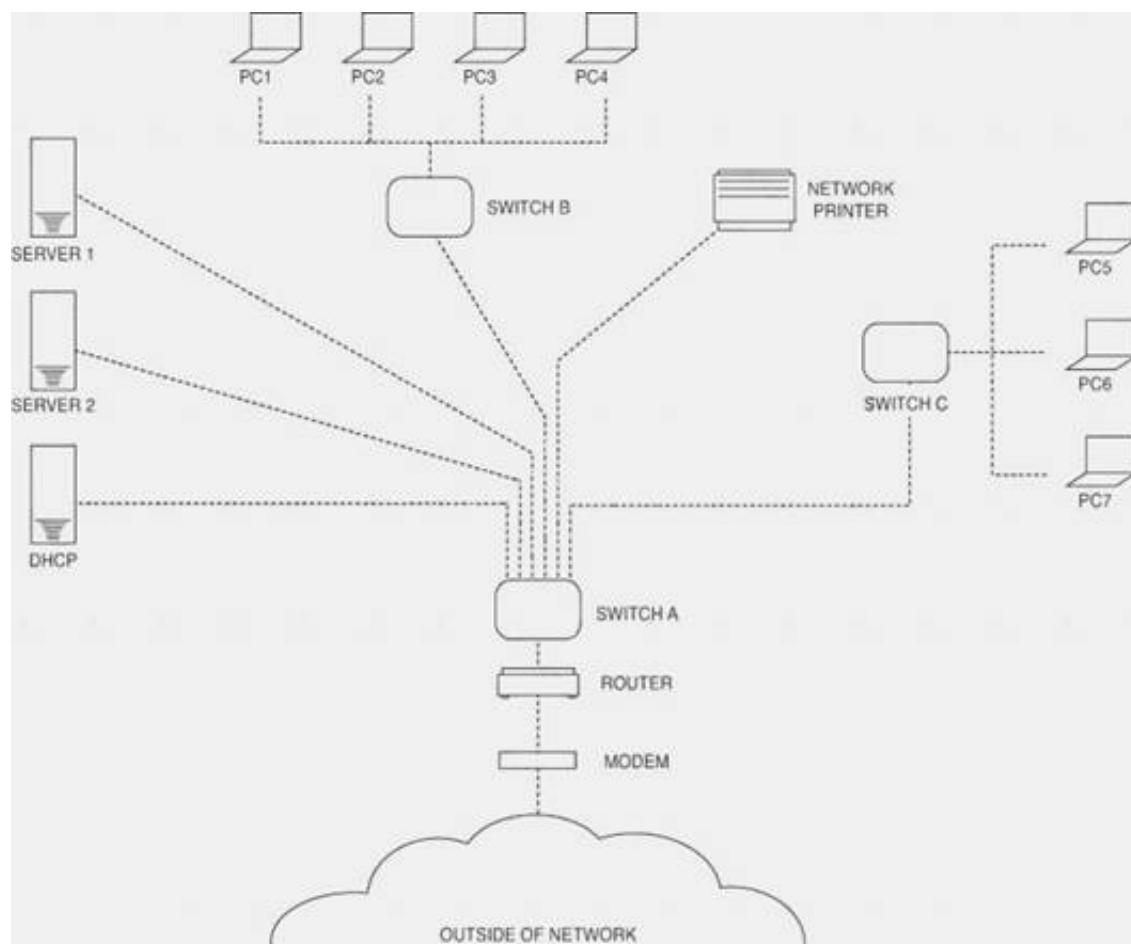
**Answer:** A

#### NEW QUESTION 368

- (Exam Topic 2)

Please refer to the attached exhibit. Which of the following types of configuration management documentation is represented?





- A. Network security policy
- B. Network baseline
- C. Logical network diagram
- D. Wiring schematic

**Answer: C**

#### NEW QUESTION 369

- (Exam Topic 2)

Which of the following subnet masks would allow for 192.168.0.3 and 192.168.0.240 to be in the same subnet?

- A. 255.255.255.0
- B. 255.255.255.128
- C. 255.255.255.192
- D. 255.255.255.248

**Answer: A**

#### NEW QUESTION 374

- (Exam Topic 2)

Which of the following network devices restricts traffic based on words, signatures, and URLs?

- A. Layer 2 switch
- B. Content filter
- C. Load balancer
- D. Traffic analyzer

**Answer: B**

#### NEW QUESTION 375

- (Exam Topic 2)

Which of the following WAP security features offers the STRONGEST encryption?

- A. WPA
- B. WPA2
- C. WEP
- D. Hidden SSID

**Answer: B**

#### NEW QUESTION 380

- (Exam Topic 2)

A user is unable to print to a network printer. Which of following is the FIRST step that a technician should take to troubleshoot the issue?

- A. Identify the problem.
- B. Establish a plan of action to resolve the problem.
- C. Establish a theory of probable cause.
- D. Implement preventative measures.

**Answer: A**

#### NEW QUESTION 382

- (Exam Topic 2)

An administrator is replacing an existing WAP because the customer is reporting that the connection speeds are too slow. Which of the following should be installed?

- A. 802.11a
- B. 802.11b
- C. 802.11g
- D. 802.11n

**Answer:** D

#### NEW QUESTION 383

- (Exam Topic 2)

Which of the following is true about an IP address if the first bit is a one and the second bit is a zero?

- A. The address is a Class A address.
- B. The address is a Class B address.
- C. The address is a Class C address.
- D. The address is a Class D address.

**Answer:** B

#### NEW QUESTION 388

- (Exam Topic 2)

Something you have, something you are, and something you know are the three tenets of:

- A. Social engineering
- B. Change management
- C. Remote access
- D. Access control

**Answer:** D

#### NEW QUESTION 391

- (Exam Topic 3)

Which of the following BEST describes the difference between layer 2 switching and layer 2 routing?

- A. Switching moves packets between hosts on different subnets, and routing moves packets between hosts on the same subnet.
- B. Routing moves packets between hosts on different subnets, and switching moves packets between hosts on the same subnet.
- C. Both routing and switching move packets between hosts on the same subnet, but routing does so at a faster pace.
- D. Both routing and switching move packets between hosts on different subnets, but switching does so at a faster pace.

**Answer:** B

#### NEW QUESTION 395

- (Exam Topic 3)

Jeff, a business owner, has discovered that several of the nearby businesses have wireless networks. Jeff wants to implement a unique wireless network inside the business. Which of the following should be configured on the wireless access point to reduce interference from the other wireless networks?

- A. PPPoE authentication
- B. MAC filtering
- C. WPA encryption
- D. Wireless channel

**Answer:** D

#### NEW QUESTION 396

- (Exam Topic 3)

A new monitoring device is installed in the network that uses ping to determine whether critical network Internet routers are up. After three missing pings, the alarm reports the device is down. The device is now constantly reporting alarms, yet there are no reported Internet problems from users. Which of the following is the MOST likely cause?

- A. A missing route on the alarm device.
- B. Incorrect VLAN assignment on the router.
- C. A missing route on the network routers.
- D. Incorrect speed/duplex setting on the alarm device.

**Answer:** D

#### NEW QUESTION 400

- (Exam Topic 3)

Zach, a technician, suspects a duplicate IP address assignment on the network. Which of the following resources can be used to verify this problem?

- A. Network map
- B. Environmental monitor

- C. Placement map
- D. Syslog

**Answer:** D

#### NEW QUESTION 404

- (Exam Topic 3)

Kim, a technician, needs to locate a cable in an unorganized wiring closet. Which of the following tools will help her locate the cable?

- A. Protocol analyzer
- B. Cable tester
- C. Toner probe
- D. Punch down tool

**Answer:** C

#### NEW QUESTION 408

- (Exam Topic 3)

A network administrator notices that all of the company switches are running at capacity on a given day, which is abnormal according to network baselines taken recently. Which tool would BEST allow the administrator to inspect what type of traffic is on the network?

- A. Wire tap
- B. Network sniffer
- C. Load balancing appliance
- D. NIPS

**Answer:** B

#### NEW QUESTION 410

- (Exam Topic 3)

Which of the following methods for network performance optimization is used to distribute traffic among similar devices?

- A. Fault tolerance
- B. QoS
- C. Proxy server
- D. Load balancing

**Answer:** D

#### NEW QUESTION 411

- (Exam Topic 3)

Which of the following should be implemented in a networked environment carrying teleconferencing packets?

- A. L2TP
- B. SSH
- C. QoS
- D. SNMP

**Answer:** C

#### NEW QUESTION 414

- (Exam Topic 3)

Jeff, a network technician, is installing a wireless router. Which of the following should Jeff consider to get the BEST signal strength?

- A. WAP placement
- B. PoE devices
- C. MAC filtering
- D. Encryption type

**Answer:** A

#### NEW QUESTION 416

- (Exam Topic 3)

Which of the following devices are MOST often responsible for 1q tagging? (Select TWO).

- A. Switch
- B. Router
- C. IDS
- D. Hub
- E. IPS
- F. Network tap

**Answer:** AB

#### NEW QUESTION 421

- (Exam Topic 3)

An organization wants to perform maintenance on any of its web servers without affecting the service availability during a scheduled change window. Which of the following network devices would be required to provide this functionality?

- A. Router
- B. Forward proxy
- C. Load balancer
- D. Firewall

**Answer:** C

#### NEW QUESTION 425

- (Exam Topic 3)

Which of the following 802.11n features allows for the use of multiple simultaneous frequencies in order to increase usable bandwidth?

- A. Channel bonding
- B. MIMO
- C. Spatial reuse
- D. 20MHz channel spacing

**Answer:** A

#### NEW QUESTION 427

- (Exam Topic 3)

A technician notices that network access is becoming increasingly slow. All of the activity lights, on the only network layer 2 switch, are blinking at steadily increasing rates. Which of the following is the MOST likely cause of the increased traffic?

- A. STP blocking
- B. IP addresses
- C. MTU mismatch
- D. Switching loop

**Answer:** D

#### NEW QUESTION 430

- (Exam Topic 3)

Which of the following protocols are used for accessing a command line terminal session for management purposes? (Select TWO).

- A. Telnet
- B. FTP
- C. SNMP
- D. SSH
- E. RDP

**Answer:** AD

#### NEW QUESTION 432

- (Exam Topic 3)

A company has attempted to introduce a new major network segment to allow growth in capacity. On the core switch, a GBIC was used to interconnect with a newly placed downstream distribution switch for the first time. Soon after this implementation, a network flood and an outage occurred between the core and new distribution network modules. Which of the following should the network administrator troubleshoot FIRST in order to rectify the issue?

- A. Check for switching loops between core and distribution switches.
- B. Check whether an incorrect VLAN has been assigned to the new distribution switch.
- C. Check for inconsistent or missing routes between the core and distribution switches.
- D. Check whether the GBIC was set to multi-mode instead of single-mode SFP.

**Answer:** A

#### NEW QUESTION 437

- (Exam Topic 3)

A user is getting very weak signals while trying to connect to the wireless. Which of the following should the user do to help with signal strength?

- A. Call the wireless provider and ask for a T3 circuit.
- B. Move the wireless router to a better location where line of sight is obtained.
- C. Reinstall the operating system to the PC to ensure the newest patches are installed.
- D. Install a hub to ensure there is a clear path for the cables to run.

**Answer:** B

#### NEW QUESTION 441

- (Exam Topic 3)

A SOHO office recently installed a wireless network for employees to use during lunch breaks. As such, the access point was placed in the kitchen area by the microwave. Employees have been reporting intermittent connectivity when using the wireless network. Which of the following would BEST improve connectivity?

- A. Disable SSID broadcast
- B. Increase the signal strength

- C. Move the access point
- D. Change the broadcast channel

**Answer:** C

#### NEW QUESTION 444

- (Exam Topic 3)

Zach, a network technician, is configuring several switches to be managed remotely. Which of the following must be configured to connect via SSH to each of those devices, as well as to retrieve various parameters?

- A. PoE settings and VTP configuration
- B. SNMP configuration only
- C. IP address and SNMP configuration
- D. QoS and PoE settings

**Answer:** C

#### NEW QUESTION 446

- (Exam Topic 3)

Zach, a technician, wants to test a laptop's NIC for functionality but has no other networking equipment to attach it to. Which of the following would allow him to test basic functionality of the NIC?

- A. Loopback plug
- B. Protocol analyzer
- C. Smart jack
- D. Coupler

**Answer:** A

#### NEW QUESTION 448

- (Exam Topic 3)

A network technician is troubleshooting intermittent issues with VoIP call quality. A throughput tester can help assess the functionality of which of the following?

- A. LLDP
- B. VLAN tagging
- C. QoS
- D. SIP trunking

**Answer:** C

#### NEW QUESTION 450

- (Exam Topic 3)

A technician looks at an ARP table in an attempt to resolve a connectivity issue. After table of the switch is a cleared, a different MAC in the output, Which of the following does this indicate?

- A. ARP flooding
- B. VLAN mismatch
- C. Duplicate IP address
- D. Faulty NIC

**Answer:** A

#### NEW QUESTION 454

- (Exam Topic 3)

Lisa, a user, reports increased delays and timeouts when trying to reach several Internet sites. Which of the following would MOST likely be used when investigating the problem at Lisa's workstation?

- A. nslookup
- B. route
- C. nbtstat
- D. arp

**Answer:** A

#### NEW QUESTION 457

- (Exam Topic 3)

An 801.11g wireless access point was configured as follows:

- AP encryption forced to WPA2-AES mode only
- MAC address filtering enabled with the following MAC address in the allow list: 00-ab-29-da-c3-40 Which is true about the above configuration?

- A. Any 802.11b/g compatible client can connect to the wireless network if they support TKIP, the MAC address is 00-ab-29-da-c3-40, and the encryption key is known by the client.
- B. An 802.11a compatible client can connect to the wireless network only if its MAC address is 00- ab-29-da-c3-40 and the encryption key is known by the client.
- C. An 802.11n compatible client can connect to the wireless network only if its MAC address is 00- ab-29-da-c3-40 and the encryption key is known by the client.
- D. Any 802.11g compatible client can connect to the wireless network if the encryption key is known by the client.

**Answer:** C

#### NEW QUESTION 460

- (Exam Topic 3)

Lisa, a consultant, is inspecting an office that reports frequent wireless issues. Upon scanning the network broadcasting in the vicinity of the office, seven SSIDs are found. The company's Wi-Fi network and three others all share channel six. Which of the following is MOST likely causing the issue?

- A. Frequency interference
- B. Low signal strength
- C. Standard mismatch
- D. Incorrect channel

**Answer:** A

#### NEW QUESTION 462

- (Exam Topic 3)

Kim, a network administrator, should consult which documentation sources FIRST to determine the cause of recent network issues?

- A. Network map
- B. Cable management
- C. Change management
- D. Asset management

**Answer:** C

#### NEW QUESTION 466

- (Exam Topic 3)

A new user is reporting connectivity issues. Zach, the network technician, notices that there is no link light on the user's NIC. Which of the following would be used to verify the wiring back to the patch panel?

- A. Butt set
- B. Cable certifier
- C. Toner probe
- D. Snips

**Answer:** B

#### NEW QUESTION 470

- (Exam Topic 3)

Jeff, a customer, has a wireless network and has reported that the network traffic from the wireless access points seems high compared to the limited number of wireless devices used. Jeff believes that other non-employees are using the wireless network to access the Internet. Which of the following could be used to limit the access to the wireless network? (Select TWO).

- A. WPA encryption
- B. Changing wireless channels
- C. MAC filtering
- D. Changing wireless speed standards
- E. SSID disable

**Answer:** AC

#### NEW QUESTION 475

- (Exam Topic 3)

A company decides to deploy customer-facing, touch-scan kiosks. The kiosks appear to have several open service ports that could potentially become compromised. Which of the following is the MOST effective way to protect the kiosks?

- A. Install an IDS to monitor all traffic to and from the kiosks.
- B. Install honeypots on the network to detect and analyze potential kiosk attacks before they occur.
- C. Enable switchport security on the ports to which the kiosks are connected to prevent network –level attacks.
- D. Create a new network segment with ACLs, limiting kiosks' traffic with the internal network.

**Answer:** D

#### NEW QUESTION 478

- (Exam Topic 3)

Which of the following needs to be configured on a switch to use a packet sniffer?

- A. Port trunking
- B. Port mirroring
- C. Tagged VLAN
- D. Untagged VLAN

**Answer:** B

#### NEW QUESTION 479

- (Exam Topic 3)

A network technician is trying to terminate CAT5 modular jacks. Which of the following tools would be MOST appropriate for this scenario?

- A. Crimper
- B. OTDR
- C. Throughput tester
- D. Punch down tool

**Answer:** D

#### NEW QUESTION 484

- (Exam Topic 3)

Which of the following diagnostic commands relies on proper forwarding of ICMP ECHO packets?

- A. ipconfig
- B. ping
- C. route
- D. nbstat

**Answer:** B

#### NEW QUESTION 487

- (Exam Topic 3)

No link lights on a switch's SFP are functioning, so the network technician re-terminates the end. After testing the cable, the tester is showing a db loss of -9. Which of the following types of cable is MOST likely being tested?

- A. Fiber
- B. CAT3
- C. CAT5e
- D. CAT6a

**Answer:** A

#### NEW QUESTION 488

- (Exam Topic 3)

An administrator is troubleshooting analog telephony issues on the punch down block. Which of the following tools would be MOST useful in this scenario?

- A. T1 loopback
- B. Butt set
- C. Multimeter
- D. Protocol analyzer

**Answer:** B

#### NEW QUESTION 490

- (Exam Topic 3)

Jeff, a technician, is charged with setting up network monitoring for critical devices in the network. It is important the information be sent securely to the monitoring station. Which of the following protocols will support secure transmission of the data?

- A. SNMP v2
- B. VPN
- C. SYSLOG
- D. SMTP

**Answer:** A

#### NEW QUESTION 492

- (Exam Topic 3)

Lisa, a technician, has configured a new switch that is remotely accessed using SSH. The switch is working properly but cannot be accessed remotely. Which of the following items is MOST likely missing in the configuration?

- A. Port speed
- B. Cryptokey
- C. Data VLAN
- D. NAT/PAT

**Answer:** B

#### NEW QUESTION 495

- (Exam Topic 3)

Jeff, a user, is having a problem with a POTS line. Which of the following tools would Jeff use to make sure the phone lines have a dial tone?

- A. Loopback plugs
- B. Butt set
- C. Cable certifier
- D. Toner probe

**Answer:** B



#### NEW QUESTION 498

- (Exam Topic 3)

Which of the following utilities would a technician use to determine the location of lost packets on a routed network?

- A. ping
- B. nslookup
- C. route
- D. tracer

**Answer:** D

#### NEW QUESTION 501

- (Exam Topic 3)

Several users from the same building are reporting connectivity issues. The SFP at that building's IDF switch is showing a link light, but there is no link light to the corresponding switch's SFP at the MDF. Which of the following is the MOST likely cause?

- A. A crossover cable is being used.
- B. DB loss is too high on all strands.
- C. Only TX or RX strand is working.
- D. TX and RX are reversed.

**Answer:** C

#### NEW QUESTION 504

- (Exam Topic 3)

ADSL modem connects to the provider's network using which of the following authentication techniques?

- A. PoE
- B. MS-CHAP
- C. PPPoE
- D. EAP

**Answer:** C

#### NEW QUESTION 508

- (Exam Topic 3)

A network technician at a small office upgrades the VLAN switch. After the upgrade, a user reports being unable to access network resources. When the technician checks the switchport, the LED light is not lit. Which of the following should technician check FIRST?

- A. The device is using the correct cable type.
- B. The switchport is functioning properly.
- C. The device is connected to the switch.
- D. The switch is connected to the router.

**Answer:** C

#### NEW QUESTION 513

.....

## Relate Links

**100% Pass Your N10-007 Exam with ExamBible Prep Materials**

<https://www.exambible.com/N10-007-exam/>

## Contact us

We are proud of our high-quality customer service, which serves you around the clock 24/7.

Viste - <https://www.exambible.com/>