

## Exam Questions 312-49v10

Computer Hacking Forensic Investigator (CHFI-v10)

<https://www.2passeasy.com/dumps/312-49v10/>



#### NEW QUESTION 1

- (Exam Topic 3)

An International Mobile Equipment Identifier (IMEI) is a 15-digit number that indicates the manufacturer, model type, and country of approval for GSM devices. The first eight digits of an IMEI number that provide information about the model and origin of the mobile device is also known as:

- A. Type Allocation Code (TAC)
- B. Integrated Circuit Code (ICC)
- C. Manufacturer Identification Code (MIC)
- D. Device Origin Code (DOC)

**Answer:** A

#### NEW QUESTION 2

- (Exam Topic 3)

NTFS sets a flag for the file once you encrypt it and creates an EFS attribute where it stores Data Decryption Field (DDF) and Data Recovery Field (DDR). Which of the following is not a part of DDF?

- A. Encrypted FEK
- B. Checksum
- C. EFS Certificate Hash
- D. Container Name

**Answer:** B

#### NEW QUESTION 3

- (Exam Topic 3)

You need to deploy a new web-based software package for your organization. The package requires three separate servers and needs to be available on the Internet. What is the recommended architecture in terms of server placement?

- A. All three servers need to be placed internally
- B. A web server and the database server facing the Internet, an application server on the internal network
- C. A web server facing the Internet, an application server on the internal network, a database server on the internal network
- D. All three servers need to face the Internet so that they can communicate between themselves

**Answer:** D

#### NEW QUESTION 4

- (Exam Topic 3)

Which Linux command when executed displays kernel ring buffers or information about device drivers loaded into the kernel?

- A. pgrep
- B. dmesg
- C. fsck
- D. grep

**Answer:** B

#### NEW QUESTION 5

- (Exam Topic 3)

What does the 56.58.152.114(445) denote in a Cisco router log?

Jun 19 23:25:46.125 EST: %SEC-4-IPACCESSLOGP: list internet-inbound denied udp 67.124.115.35(8084)

-> 56.58.152.114(445), 1 packet

- A. Source IP address
- B. None of the above
- C. Login IP address
- D. Destination IP address

**Answer:** D

#### NEW QUESTION 6

- (Exam Topic 3)

What technique is used by JPEGs for compression?

- A. TIFF-8
- B. ZIP
- C. DCT
- D. TCD

**Answer:** C

#### NEW QUESTION 7

- (Exam Topic 3)

A forensic examiner is examining a Windows system seized from a crime scene. During the examination of a suspect file, he discovered that the file is password protected. He tried guessing the password using the suspect's available information but without any success. Which of the following tool can help the investigator

to solve this issue?

- A. Cain & Abel
- B. Xplico
- C. Recuva
- D. Colasoft's Capsa

**Answer:** A

#### NEW QUESTION 8

- (Exam Topic 3)

What value of the "Boot Record Signature" is used to indicate that the boot-loader exists?

- A. AA55
- B. 00AA
- C. AA00
- D. A100

**Answer:** A

#### NEW QUESTION 9

- (Exam Topic 3)

Which of these Windows utility help you to repair logical file system errors?

- A. Resource Monitor
- B. Disk cleanup
- C. Disk defragmenter
- D. CHKDSK

**Answer:** D

#### NEW QUESTION 10

- (Exam Topic 3)

Investigators can use the Type Allocation Code (TAC) to find the model and origin of a mobile device. Where is TAC located in mobile devices?

- A. International Mobile Equipment Identifier (IMEI)
- B. Integrated circuit card identifier (ICCID)
- C. International mobile subscriber identity (IMSI)
- D. Equipment Identity Register (EIR)

**Answer:** A

#### NEW QUESTION 10

- (Exam Topic 3)

When analyzing logs, it is important that the clocks of all the network devices are synchronized. Which protocol will help in synchronizing these clocks?

- A. UTC
- B. PTP
- C. Time Protocol
- D. NTP

**Answer:** D

#### NEW QUESTION 14

- (Exam Topic 3)

In Windows, prefetching is done to improve system performance. There are two types of prefetching: boot prefetching and application prefetching. During boot prefetching, what does the Cache Manager do?

- A. Determines the data associated with value EnablePrefetcher
- B. Monitors the first 10 seconds after the process is started
- C. Checks whether the data is processed
- D. Checks hard page faults and soft page faults

**Answer:** C

#### NEW QUESTION 16

- (Exam Topic 3)

Which of these ISO standards define the file system for optical storage media, such as CD-ROM and DVD-ROM?

- A. ISO 9660
- B. ISO 13346
- C. ISO 9960
- D. ISO 13490

**Answer:** A

#### NEW QUESTION 21

- (Exam Topic 3)

Brian needs to acquire data from RAID storage. Which of the following acquisition methods is recommended to retrieve only the data relevant to the investigation?

- A. Static Acquisition
- B. Sparse or Logical Acquisition
- C. Bit-stream disk-to-disk Acquisition
- D. Bit-by-bit Acquisition

**Answer:** B

#### NEW QUESTION 25

- (Exam Topic 3)

Which of the following attack uses HTML tags like <script></script>?

- A. Phishing
- B. XSS attack
- C. SQL injection
- D. Spam

**Answer:** B

#### NEW QUESTION 27

- (Exam Topic 3)

Which U.S. law sets the rules for sending emails for commercial purposes, establishes the minimum requirements for commercial messaging, gives the recipients of emails the right to ask the senders to stop emailing them, and spells out the penalties in case the above said rules are violated?

- A. NO-SPAM Act
- B. American: NAVSO P-5239-26 (RLL)
- C. CAN-SPAM Act
- D. American: DoD 5220.22-M

**Answer:** C

#### NEW QUESTION 28

- (Exam Topic 3)

Which component in the hard disk moves over the platter to read and write information?

- A. Actuator
- B. Spindle
- C. Actuator Axis
- D. Head

**Answer:** D

#### NEW QUESTION 29

- (Exam Topic 3)

What document does the screenshot represent?

 Laboratory or Agency Name :		 Case Number :	
 Received from (Name and Title)		 Address and Telephone Number	
 Location from where Evidence Obtained		 Reason Evidence Was Obtained	 Date and Time Evidence Was Obtained
Item Number	Quantity	Description of Item	

- A. Expert witness form
- B. Search warrant form
- C. Chain of custody form
- D. Evidence collection form

**Answer:** D

#### NEW QUESTION 31

- (Exam Topic 3)

Which of the following examinations refers to the process of providing the opposing side in a trial the opportunity to question a witness?

- A. Cross Examination
- B. Direct Examination
- C. Indirect Examination
- D. Witness Examination

**Answer:** A

#### NEW QUESTION 34

- (Exam Topic 3)

Amber, a black hat hacker, has embedded malware into a small enticing advertisement and posted it on a popular ad-network that displays across various websites. What is she doing?

- A. Malvertising
- B. Compromising a legitimate site
- C. Click-jacking
- D. Spearphishing

**Answer:** A

#### NEW QUESTION 35

- (Exam Topic 3)

> NMAP -sn 192.168.11.200-215 The NMAP command above performs which of the following?

- A. A trace sweep
- B. A port scan
- C. A ping scan
- D. An operating system detect

**Answer:** C

#### NEW QUESTION 36

- (Exam Topic 3)

Select the data that a virtual memory would store in a Windows-based system.

- A. Information or metadata of the files
- B. Documents and other files
- C. Application data
- D. Running processes

**Answer:** D

#### NEW QUESTION 41

- (Exam Topic 3)

You are working as an independent computer forensics investigator and received a call from a systems administrator for a local school system requesting your assistance. One of the students at the local high school is suspected of downloading inappropriate images from the Internet to a PC in the Computer Lab. When you arrive at the school, the systems administrator hands you a hard drive and tells you that he made a “simple backup copy” of the hard drive in the PC and put it on this drive and requests that you examine the drive for evidence of the suspected images. You inform him that a “simple backup copy” will not provide deleted files or recover file fragments. What type of copy do you need to make to ensure that the evidence found is complete and admissible in future proceeding?

- A. Robust copy
- B. Incremental backup copy
- C. Bit-stream copy
- D. Full backup copy

**Answer:** C

#### NEW QUESTION 43

- (Exam Topic 3)

For what purpose do the investigators use tools like iPhoneBrowser, iFunBox, OpenSSHSSH, and iMazing?

- A. Bypassing iPhone passcode
- B. Debugging iPhone
- C. Rooting iPhone
- D. Copying contents of iPhone

**Answer:** A

#### NEW QUESTION 45

- (Exam Topic 3)

Which among the following laws emphasizes the need for each Federal agency to develop, document, and implement an organization-wide program to provide information security for the information systems that support its operations and assets?

- A. FISMA
- B. HIPAA
- C. GLBA

D. SOX

**Answer:** A

#### NEW QUESTION 47

- (Exam Topic 3)

Which of the following statements is TRUE with respect to the Registry settings in the user start-up folder HKEY\_CURRENT\_USER\Software\Microsoft\Windows\CurrentVersion\RunOnce\.

- A. All the values in this subkey run when specific user logs on, as this setting is user-specific
- B. The string specified in the value run executes when user logs on
- C. All the values in this key are executed at system start-up
- D. All values in this subkey run when specific user logs on and then the values are deleted

**Answer:** D

#### NEW QUESTION 52

- (Exam Topic 3)

An investigator has found certain details after analysis of a mobile device. What can reveal the manufacturer information?

- A. Equipment Identity Register (EIR)
- B. Electronic Serial Number (ESN)
- C. International mobile subscriber identity (IMSI)
- D. Integrated circuit card identifier (ICCID)

**Answer:** B

#### NEW QUESTION 53

- (Exam Topic 3)

James, a hacker, identifies a vulnerability in a website. To exploit the vulnerability, he visits the login page and notes down the session ID that is created. He appends this session ID to the login URL and shares the link with a victim. Once the victim logs into the website using the shared URL, James reloads the webpage (containing the URL with the session ID appended) and now, he can browse the active session of the victim. Which attack did James successfully execute?

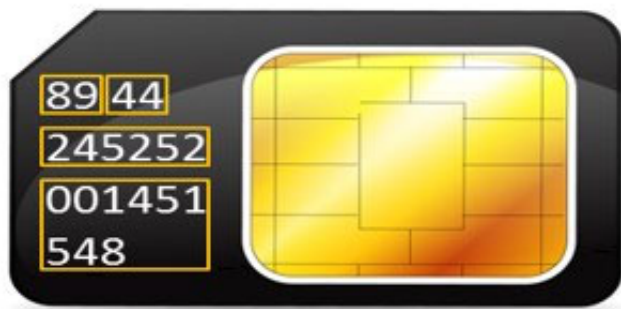
- A. Cross Site Request Forgery
- B. Cookie Tampering
- C. Parameter Tampering
- D. Session Fixation Attack

**Answer:** D

#### NEW QUESTION 55

- (Exam Topic 3)

During an investigation, Noel found the following SIM card from the suspect's mobile. What does the code 89 44 represent?



- A. Issuer Identifier Number and TAC
- B. Industry Identifier and Country code
- C. Individual Account Identification Number and Country Code
- D. TAC and Industry Identifier

**Answer:** B

#### NEW QUESTION 60

- (Exam Topic 3)

Which of the following tool is used to locate IP addresses?

- A. SmartWhois
- B. Deep Log Analyzer
- C. Towelroot
- D. XRY LOGICAL

**Answer:** A

#### NEW QUESTION 61

- (Exam Topic 3)

What is the name of the first reserved sector in File allocation table?



- A. Volume Boot Record
- B. Partition Boot Sector
- C. Master Boot Record
- D. BIOS Parameter Block

**Answer:** C

#### NEW QUESTION 64

- (Exam Topic 3)

A Linux system is undergoing investigation. In which directory should the investigators look for its current state data if the system is in powered on state?

- A. /auth
- B. /proc
- C. /var/log/debug
- D. /var/spool/cron/

**Answer:** B

#### NEW QUESTION 67

- (Exam Topic 3)

Which of the following is found within the unique instance ID key and helps investigators to map the entry from USBSTOR key to the MountedDevices key?

- A. ParentIDPrefix
- B. LastWrite
- C. UserAssist key
- D. MRUListEx key

**Answer:** A

#### NEW QUESTION 70

- (Exam Topic 3)

After suspecting a change in MS-Exchange Server storage archive, the investigator has analyzed it. Which of the following components is not an actual part of the archive?

- A. PRIV.STM
- B. PUB.EDB
- C. PRIV.EDB
- D. PUB.STM

**Answer:** D

#### NEW QUESTION 73

- (Exam Topic 3)

During forensics investigations, investigators tend to collect the system time at first and compare it with UTC. What does the abbreviation UTC stand for?

- A. Coordinated Universal Time
- B. Universal Computer Time
- C. Universal Time for Computers
- D. Correlated Universal Time

**Answer:** A

#### NEW QUESTION 74

- (Exam Topic 3)

What is the location of a Protective MBR in a GPT disk layout?

- A. Logical Block Address (LBA) 2
- B. Logical Block Address (LBA) 0
- C. Logical Block Address (LBA) 1
- D. Logical Block Address (LBA) 3

**Answer:** C

#### NEW QUESTION 75

- (Exam Topic 3)

Identify the term that refers to individuals who, by virtue of their knowledge and expertise, express an independent opinion on a matter related to a case based on the information that is provided.

- A. Expert Witness
- B. Evidence Examiner
- C. Forensic Examiner
- D. Defense Witness

**Answer:** A

#### NEW QUESTION 76

- (Exam Topic 3)

In a computer that has Dropbox client installed, which of the following files related to the Dropbox client store information about local Dropbox installation and the Dropbox user account, along with email IDs linked with the account?

- A. config.db
- B. install.db
- C. sigstore.db
- D. filecache.db

**Answer:** A

#### NEW QUESTION 81

- (Exam Topic 3)

Select the tool appropriate for finding the dynamically linked lists of an application or malware.

- A. SysAnalyzer
- B. ResourcesExtract
- C. PEiD
- D. Dependency Walker

**Answer:** D

#### NEW QUESTION 85

- (Exam Topic 3)

CAN-SPAM act requires that you:

- A. Don't use deceptive subject lines
- B. Don't tell the recipients where you are located
- C. Don't identify the message as an ad
- D. Don't use true header information

**Answer:** A

#### NEW QUESTION 88

- (Exam Topic 3)

As a Certified Ethical Hacker, you were contracted by a private firm to conduct an external security assessment through penetration testing . What document describes the specifics of the testing, the associated violations, and essentially protects both the organization's interest and your liabilities as a tester?

- A. Project Scope
- B. Rules of Engagement
- C. Non-Disclosure Agreement
- D. Service Level Agreement

**Answer:** B

#### NEW QUESTION 92

- (Exam Topic 3)

Which among the following U.S. laws requires financial institutions—companies that offer consumers financial products or services such as loans, financial or investment advice, or insurance—to protect their customers' information against security threats?

- A. SOX
- B. HIPAA
- C. GLBA
- D. FISMA

**Answer:** C

#### NEW QUESTION 97

- (Exam Topic 3)

Which of the following is a precomputed table containing word lists like dictionary files and brute force lists and their hash values?

- A. Directory Table
- B. Rainbow Table
- C. Master file Table (MFT)
- D. Partition Table

**Answer:** B

#### NEW QUESTION 100

- (Exam Topic 3)

In which cloud crime do attackers try to compromise the security of the cloud environment in order to steal data or inject a malware?

- A. Cloud as an Object
- B. Cloud as a Tool
- C. Cloud as an Application
- D. Cloud as a Subject



**Answer:** D

#### NEW QUESTION 102

- (Exam Topic 3)

In which registry does the system store the Microsoft security IDs?

- A. HKEY\_CLASSES\_ROOT (HKCR)
- B. HKEY\_CURRENT\_CONFIG (HKCC)
- C. HKEY\_CURRENT\_USER (HKCU)
- D. HKEY\_LOCAL\_MACHINE (HKLM)

**Answer:** D

#### NEW QUESTION 105

- (Exam Topic 3)

Smith is an IT technician that has been appointed to his company's network vulnerability assessment team. He is the only IT employee on the team. The other team members include employees from Accounting, Management, Shipping, and Marketing. Smith and the team members are having their first meeting to discuss how they will proceed. What is the first step they should do to create the network vulnerability assessment plan?

- A. Their first step is to make a hypothesis of what their final findings will be.
- B. Their first step is to create an initial Executive report to show the management team.
- C. Their first step is to analyze the data they have currently gathered from the company or interviews.
- D. Their first step is the acquisition of required documents, reviewing of security policies and compliance.

**Answer:** D

#### NEW QUESTION 109

- (Exam Topic 3)

An investigator has extracted the device descriptor for a 1GB thumb drive that looks like: Disk&Ven\_Best\_Buy&Prod\_Geek\_Squad\_U3&Rev\_6.15. What does the "Geek\_Squad" part represent?

- A. Product description
- B. Manufacturer Details
- C. Developer description
- D. Software or OS used

**Answer:** A

#### NEW QUESTION 112

- (Exam Topic 3)

Which forensic investigation methodology believes that criminals commit crimes solely to benefit their criminal enterprises?

- A. Scientific Working Group on Digital Evidence
- B. Daubert Standard
- C. Enterprise Theory of Investigation
- D. Fyre Standard

**Answer:** C

#### NEW QUESTION 113

- (Exam Topic 3)

Which of the following standard represents a legal precedent set in 1993 by the Supreme Court of the United States regarding the admissibility of expert witnesses' testimony during federal legal proceedings?

- A. SWGDE & SWGIT
- B. IOCE
- C. Frye
- D. Daubert

**Answer:** D

#### NEW QUESTION 116

- (Exam Topic 3)

Which command line tool is used to determine active network connections?

- A. netsh
- B. nbstat
- C. nslookup
- D. netstat

**Answer:** D

#### NEW QUESTION 120

- (Exam Topic 3)

Smith, an employee of a reputed forensic investigation firm, has been hired by a private organization to investigate a laptop that is suspected to be involved in the hacking of the organization's DC server. Smith wants to find all the values typed into the Run box in the Start menu. Which of the following registry keys will Smith check to find the above information?

- A. TypedURLs key
- B. MountedDevices key
- C. UserAssist Key
- D. RunMRU key

**Answer:** D

#### NEW QUESTION 123

- (Exam Topic 3)

Which among the following web application threats is resulted when developers expose various internal implementation objects, such as files, directories, database records, or key-through references?

- A. Remote File Inclusion
- B. Cross Site Scripting
- C. Insecure Direct Object References
- D. Cross Site Request Forgery

**Answer:** C

#### NEW QUESTION 128

- (Exam Topic 3)

The Recycle Bin exists as a metaphor for throwing files away, but it also allows a user to retrieve and restore files. Once the file is moved to the recycle bin, a record is added to the log file that exists in the Recycle Bin. Which of the following files contains records that correspond to each deleted file in the Recycle Bin?

- A. INFO2
- B. INFO1
- C. LOGINFO1
- D. LOGINFO2

**Answer:** A

#### NEW QUESTION 131

- (Exam Topic 3)

What is the purpose of using Obfuscator in malware?

- A. Execute malicious code in the system
- B. Avoid encryption while passing through a VPN
- C. Avoid detection by security mechanisms
- D. Propagate malware to other connected devices

**Answer:** C

#### NEW QUESTION 132

- (Exam Topic 3)

Tasklist command displays a list of applications and services with their Process ID (PID) for all tasks running on either a local or a remote computer. Which of the following tasklist commands provides information about the listed processes, including the image name, PID, name, and number of the session for the process?

- A. tasklist /p
- B. tasklist /v
- C. tasklist /u
- D. tasklist /s

**Answer:** B

#### NEW QUESTION 137

- (Exam Topic 3)

Robert, a cloud architect, received a huge bill from the cloud service provider, which usually doesn't happen. After analyzing the bill, he found that the cloud resource consumption was very high. He then examined the cloud server and discovered that a malicious code was running on the server, which was generating huge but harmless traffic from the server. This means that the server has been compromised by an attacker with the sole intention to hurt the cloud customer financially. Which attack is described in the above scenario?

- A. XSS Attack
- B. DDoS Attack (Distributed Denial of Service)
- C. Man-in-the-cloud Attack
- D. EDoS Attack (Economic Denial of Service)

**Answer:** B

#### NEW QUESTION 140

- (Exam Topic 3)

Gill is a computer forensics investigator who has been called upon to examine a seized computer. This computer, according to the police, was used by a hacker who gained access to numerous banking institutions to steal customer information. After preliminary investigations, Gill finds in the computer's log files that the

hacker was able to gain access to these banks through the use of Trojan horses. The hacker then used these Trojan horses to obtain remote access to the companies' domain controllers. From this point, Gill found that the hacker pulled off the SAM files from the domain controllers to then attempt and crack network passwords. What is the most likely password cracking technique used by this hacker to break the user passwords from the SAM files?

- A. Syllable attack
- B. Hybrid attack
- C. Brute force attack
- D. Dictionary attack

**Answer:** D

#### NEW QUESTION 144

- (Exam Topic 3)

What is the role of Alloc.c in Apache core?

- A. It handles allocation of resource pools
- B. It is useful for reading and handling of the configuration files
- C. It takes care of all the data exchange and socket connections between the client and the server
- D. It handles server start-ups and timeouts

**Answer:** A

#### NEW QUESTION 146

- (Exam Topic 3)

In which of these attacks will a steganalyst use a random message to generate a stego-object by using some steganography tool, to find the steganography algorithm used to hide the information?

- A. Chosen-message attack
- B. Known-cover attack
- C. Known-message attack
- D. Known-stego attack

**Answer:** A

#### NEW QUESTION 151

- (Exam Topic 3)

Which of the following is NOT a physical evidence?

- A. Removable media
- B. Cables
- C. Image file on a hard disk
- D. Publications

**Answer:** C

#### NEW QUESTION 152

- (Exam Topic 3)

To reach a bank web site, the traffic from workstations must pass through a firewall. You have been asked to review the firewall configuration to ensure that workstations in network 10.10.10.0/24 can only reach the bank web site 10.20.20.1 using https. Which of the following firewall rules meets this requirement?

- A. if (source matches 10.10.10.0/24 and destination matches 10.20.20.1 and port matches 443) then permit
- B. if (source matches 10.10.10.0/24 and destination matches 10.20.20.1 and port matches 80 or 443) then permit
- C. if (source matches 10.10.10.0 and destination matches 10.20.20.1 and port matches 443) then permit

**Answer:** A

#### NEW QUESTION 155

- (Exam Topic 3)

As part of extracting the system data, Jenifer has used the netstat command. What does this tool reveal?

- A. Status of users connected to the internet
- B. Net status of computer usage
- C. Information about network connections
- D. Status of network hardware

**Answer:** C

#### NEW QUESTION 159

- (Exam Topic 3)

Korey, a data mining specialist in a knowledge processing firm DataHub.com, reported his CISO that he has lost certain sensitive data stored on his laptop. The CISO wants his forensics investigation team to find if the data loss was accident or intentional. In which of the following category this case will fall?

- A. Civil Investigation
- B. Administrative Investigation
- C. Both Civil and Criminal Investigations
- D. Criminal Investigation

**Answer:** B

**NEW QUESTION 163**

- (Exam Topic 3)

While analyzing a hard disk, the investigator finds that the file system does not use UEFI-based interface. Which of the following operating systems is present on the hard disk?

- A. Windows 10
- B. Windows 8
- C. Windows 7
- D. Windows 8.1

**Answer:** C

**NEW QUESTION 165**

- (Exam Topic 3)

Raw data acquisition format creates \_\_\_\_\_ of a data set or suspect drive.

- A. Segmented image files
- B. Simple sequential flat files
- C. Compressed image files
- D. Segmented files

**Answer:** B

**NEW QUESTION 168**

- (Exam Topic 3)

A section of your forensics lab houses several electrical and electronic equipment. Which type of fire extinguisher you must install in this area to contain any fire incident?

- A. Class B
- B. Class D
- C. Class C
- D. Class A

**Answer:** C

**NEW QUESTION 169**

- (Exam Topic 3)

Which of the following is NOT an anti-forensics technique?

- A. Data Deduplication
- B. Password Protection
- C. Encryption
- D. Steganography

**Answer:** A

**NEW QUESTION 170**

- (Exam Topic 3)

Which of the following files contains the traces of the applications installed, run, or uninstalled from a system?

- A. Virtual Files
- B. Image Files
- C. Shortcut Files
- D. Prefetch Files

**Answer:** C

**NEW QUESTION 171**

- (Exam Topic 3)

Which of the following web browser uses the Extensible Storage Engine (ESE) database format to store browsing records, including history, cache, and cookies?

- A. Safari
- B. Mozilla Firefox
- C. Microsoft Edge
- D. Google Chrome

**Answer:** C

**NEW QUESTION 174**

- (Exam Topic 3)

In a Linux-based system, what does the command “Last -F” display?

- A. Login and logout times and dates of the system

- B. Last run processes
- C. Last functions performed
- D. Recently opened files

**Answer:** A

#### NEW QUESTION 178

- (Exam Topic 3)

Which of the following Perl scripts will help an investigator to access the executable image of a process?

- A. Lspd.pl
- B. Lpsi.pl
- C. Lspm.pl
- D. Lspi.pl

**Answer:** D

#### NEW QUESTION 182

- (Exam Topic 3)

Which of the following is a device monitoring tool?

- A. Capsa
- B. Driver Detective
- C. Regshot
- D. RAM Capturer

**Answer:** A

#### NEW QUESTION 186

- (Exam Topic 3)

One technique for hiding information is to change the file extension from the correct one to the one that might not be noticed by an investigator. For example, changing a .jpg extension to a .doc extension so that a picture file appears to be a document. What can an investigator examine to verify that a file has the correct extension?

- A. The file header
- B. The File Allocation Table
- C. The file footer
- D. The sector map

**Answer:** A

#### NEW QUESTION 188

- (Exam Topic 3)

What system details can an investigator obtain from the NetBIOS name table cache?

- A. List of files opened on other systems
- B. List of the system present on a router
- C. List of connections made to other systems
- D. List of files shared between the connected systems

**Answer:** C

#### NEW QUESTION 192

- (Exam Topic 3)

Which of the following file formats allows the user to compress the acquired data as well as keep it randomly accessible?

- A. Proprietary Format
- B. Generic Forensic Zip (gfbzip)
- C. Advanced Forensic Framework 4
- D. Advanced Forensics Format (AFF)

**Answer:** B

#### NEW QUESTION 197

- (Exam Topic 3)

Buffer overflow vulnerability of a web application occurs when it fails to guard its buffer properly and allows writing beyond its maximum size. Thus, it overwrites the \_\_\_\_\_. There are multiple forms of buffer overflow, including a Heap Buffer Overflow and a Format String Attack.

- A. Adjacent memory locations
- B. Adjacent bit blocks
- C. Adjacent buffer locations
- D. Adjacent string locations

**Answer:** A

#### NEW QUESTION 200

- (Exam Topic 3)

Which of the following standard represents a legal precedent regarding the admissibility of scientific examinations or experiments in legal cases?

- A. SWGDE & SWGIT
- B. Daubert
- C. Frye
- D. IOCE

**Answer:** C

#### NEW QUESTION 205

- (Exam Topic 3)

Which of the following is a responsibility of the first responder?

- A. Determine the severity of the incident
- B. Collect as much information about the incident as possible
- C. Share the collected information to determine the root cause
- D. Document the findings

**Answer:** B

#### NEW QUESTION 206

- (Exam Topic 3)

Which principle states that “anyone or anything, entering a crime scene takes something of the scene with them, and leaves something of themselves behind when they leave”?

- A. Locard's Exchange Principle
- B. Enterprise Theory of Investigation
- C. Locard's Evidence Principle
- D. Evidence Theory of Investigation

**Answer:** A

#### NEW QUESTION 210

- (Exam Topic 3)

Email archiving is a systematic approach to save and protect the data contained in emails so that it can be accessed fast at a later date. There are two main archive types, namely Local Archive and Server Storage Archive. Which of the following statements is correct while dealing with local archives?

- A. Server storage archives are the server information and settings stored on a local system, whereas the local archives are the local email client information stored on the mail server
- B. It is difficult to deal with the webmail as there is no offline archive in most case
- C. So consult your counsel on the case as to the best way to approach and gain access to the required data on servers
- D. Local archives should be stored together with the server storage archives in order to be admissible in a court of law
- E. Local archives do not have evidentiary value as the email client may alter the message data

**Answer:** B

#### NEW QUESTION 215

- (Exam Topic 3)

An investigator is analyzing a checkpoint firewall log and comes across symbols. What type of log is he looking at?



- A. Security event was monitored but not stopped
- B. Malicious URL detected
- C. An email marked as potential spam
- D. Connection rejected

**Answer:** C

#### NEW QUESTION 219

- (Exam Topic 2)

Sniffers that place NICs in promiscuous mode work at what layer of the OSI model?

- A. Network
- B. Transport
- C. Physical
- D. Data Link

**Answer:** C

#### NEW QUESTION 223

- (Exam Topic 2)



Which of the following tool creates a bit-by-bit image of an evidence media?

- A. Recuva
- B. FileMerlin
- C. AccessData FTK Imager
- D. Xplico

**Answer:** C

#### NEW QUESTION 227

- (Exam Topic 2)

Amber, a black hat hacker, has embedded a malware into a small enticing advertisement and posted it on a popular ad-network that displays across various websites. What is she doing?

- A. Click-jacking
- B. Compromising a legitimate site
- C. Spearphishing
- D. Malvertising

**Answer:** D

#### NEW QUESTION 229

- (Exam Topic 2)

Given the drive dimensions as follows and assuming a sector has 512 bytes, what is the capacity of the described hard drive?

22,164 cylinders/disk

80 heads/cylinder

63 sectors/track

- A. 53.26 GB
- B. 57.19 GB
- C. 11.17 GB
- D. 10 GB

**Answer:** A

#### NEW QUESTION 233

- (Exam Topic 2)

What feature of Decryption Collection allows an investigator to crack a password as quickly as possible?

- A. Cracks every password in 10 minutes
- B. Distribute processing over 16 or fewer computers
- C. Support for Encrypted File System
- D. Support for MD5 hash verification

**Answer:** B

#### NEW QUESTION 236

- (Exam Topic 2)

What type of flash memory card comes in either Type I or Type II and consumes only five percent of the power required by small hard drives?

- A. SD memory
- B. CF memory
- C. MMC memory
- D. SM memory

**Answer:** B

#### NEW QUESTION 239

- (Exam Topic 2)

Tyler is setting up a wireless network for his business that he runs out of his home. He has followed all the directions from the ISP as well as the wireless router manual. He does not have any encryption set and the SSID is being broadcast. On his laptop, he can pick up the wireless signal for short periods of time, but then the connection drops and the signal goes away. Eventually the wireless signal shows back up, but drops intermittently. What could be Tyler issue with his home wireless network?

- A. Computers on his wired network
- B. Satellite television
- C. 2.4Ghz Cordless phones
- D. CB radio

**Answer:** C

#### NEW QUESTION 242

- (Exam Topic 2)

Before performing a logical or physical search of a drive in Encase, what must be added to the program?

- A. File signatures
- B. Keywords

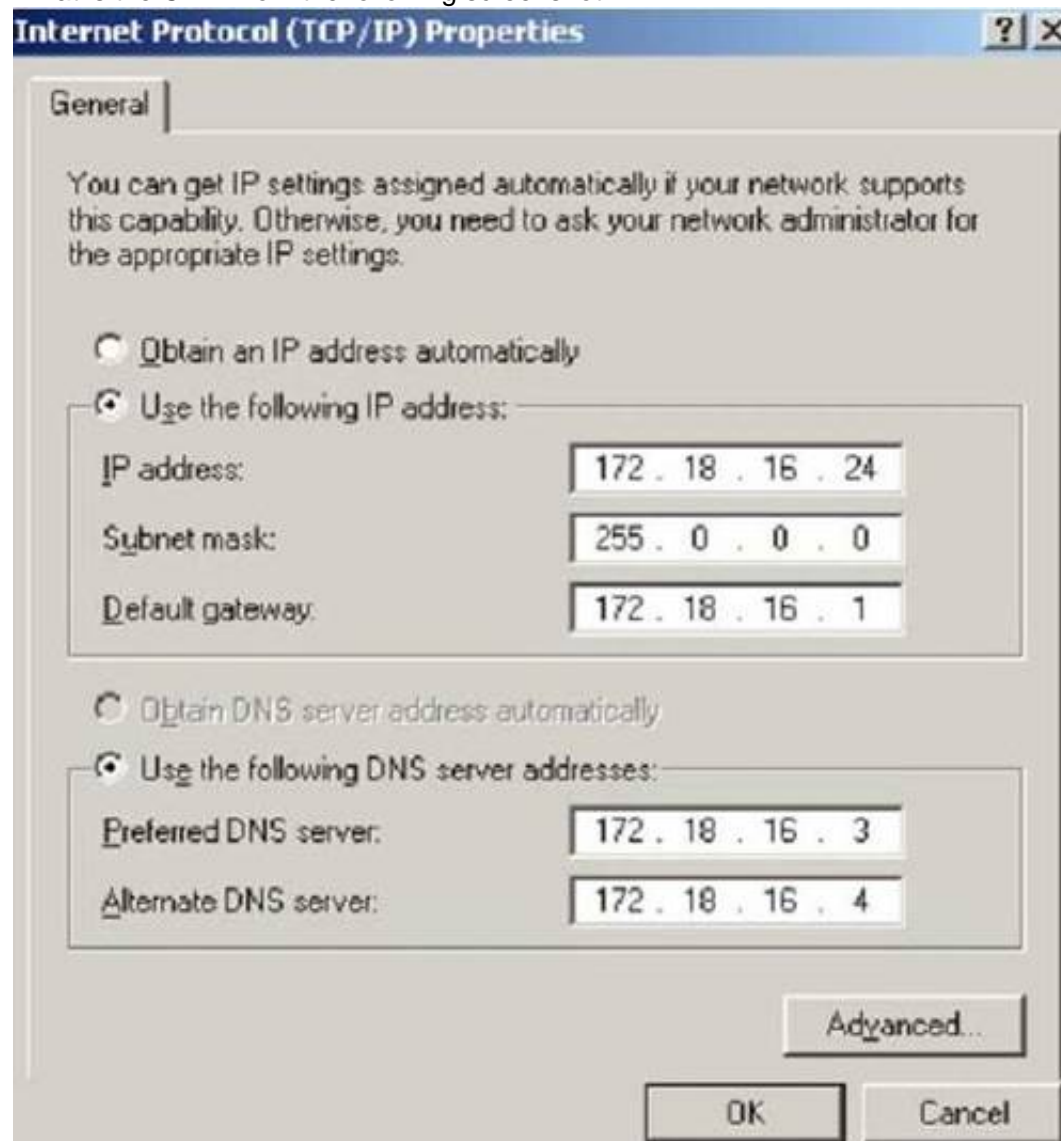
- C. Hash sets
- D. Bookmarks

**Answer:** B

#### NEW QUESTION 246

- (Exam Topic 2)

What is the CIDR from the following screenshot?



- A. /24A./24A./24
- B. /32 B./32 B./32
- C. /16 C./16 C./16
- D. /8D./8D./8

**Answer:** D

#### NEW QUESTION 248

- (Exam Topic 2)

Bob works as information security analyst for a big finance company. One day, the anomaly-based intrusion detection system alerted that a volumetric DDOS targeting the main IP of the main web server was occurring. What kind of attack is it?

- A. IDS attack
- B. APT
- C. Web application attack
- D. Network attack

**Answer:** D

#### NEW QUESTION 252

- (Exam Topic 2)

What encryption technology is used on Blackberry devices Password Keeper?

- A. 3DES
- B. AES
- C. Blowfish
- D. RC5

**Answer:** B

#### NEW QUESTION 255

- (Exam Topic 2)

What will the following Linux command accomplish? dd if=/dev/mem of=/home/sam/mem.bin bs=1024

- A. Copy the master boot record to a file
- B. Copy the contents of the system folder to a file

- C. Copy the running memory to a file
- D. Copy the memory dump file to an image file

**Answer:** C

#### NEW QUESTION 258

- (Exam Topic 2)

Julie is a college student majoring in Information Systems and Computer Science. She is currently writing an essay for her computer crimes class. Julie paper focuses on white-collar crimes in America and how forensics investigators investigate the cases. Julie would like to focus the subject. Julie would like to focus the subject of the essay on the most common type of crime found in corporate America. What crime should Julie focus on?

- A. Physical theft
- B. Copyright infringement
- C. Industrial espionage
- D. Denial of Service attacks

**Answer:** C

#### NEW QUESTION 259

- (Exam Topic 2)

Billy, a computer forensics expert, has recovered a large number of DBX files during the forensic investigation of a laptop. Which of the following email clients can he use to analyze the DBX files?

- A. Microsoft Outlook
- B. Eudora
- C. Mozilla Thunderbird
- D. Microsoft Outlook Express

**Answer:** D

#### NEW QUESTION 261

- (Exam Topic 2)

Wireless access control attacks aim to penetrate a network by evading WLAN access control measures such as AP MAC filters and Wi-Fi port access controls. Which of the following wireless access control attacks allow the attacker to set up a rogue access point outside the corporate perimeter and then lure the employees of the organization to connect to it?

- A. Ad hoc associations
- B. Client mis-association
- C. MAC spoofing
- D. Rogue access points

**Answer:** B

#### NEW QUESTION 266

- (Exam Topic 2)

What must an investigator do before disconnecting an iPod from any type of computer?

- A. Unmount the iPod
- B. Mount the iPod
- C. Disjoin the iPod
- D. Join the iPod

**Answer:** A

#### NEW QUESTION 267

- (Exam Topic 2)

Which of the following commands shows you the names of all open shared files on a server and the number of file locks on each file?

- A. Net config
- B. Net file
- C. Net share
- D. Net sessions

**Answer:** B

#### NEW QUESTION 271

- (Exam Topic 2)

Which of the following tool enables data acquisition and duplication?

- A. Colasoft's Capsa
- B. DriveSpy
- C. Wireshark
- D. Xplico

**Answer:** B

#### NEW QUESTION 272

- (Exam Topic 2)

Depending upon the jurisdictional areas, different laws apply to different incidents. Which of the following law is related to fraud and related activity in connection with computers?

- A. 18 USC §1029
- B. 18 USC §1030
- C. 18 USC §1361
- D. 18 USC §1371

**Answer: B**

#### NEW QUESTION 275

- (Exam Topic 2)

What does the 63.78.199.4(161) denotes in a Cisco router log?

Mar 14 22:57:53.425 EST: %SEC-6-IPACCESSLOGP: list internet-inbound denied udp 66.56.16.77(1029) -> 63.78.199.4(161), 1 packet

- A. Destination IP address
- B. Source IP address
- C. Login IP address
- D. None of the above

**Answer: A**

#### NEW QUESTION 278

- (Exam Topic 2)

Which of the following refers to the process of the witness being questioned by the attorney who called the latter to the stand?

- A. Witness Authentication
- B. Direct Examination
- C. Expert Witness
- D. Cross Questioning

**Answer: B**

#### NEW QUESTION 280

- (Exam Topic 2)

Company ABC has employed a firewall, IDS, Antivirus, Domain Controller, and SIEM. The company's domain controller goes down. From which system would you begin your investigation?

- A. Domain Controller
- B. Firewall
- C. SIEM
- D. IDS

**Answer: C**

#### NEW QUESTION 285

- (Exam Topic 2)

The following is a log file screenshot from a default installation of IIS 6.0.

```
#Software: Microsoft Internet Information Services 6.0
#Version: 1.0
#Date: 2007-01-22 15:42:36
#Fields: date time s-sitename s-ip cs-method cs-uri-stem cs-uri-query s-port cs-user
2007-01-22 15:42:36 w3svc1 172.16.28.102 GET /index.html - 80 - 172.16.28.80
Mozilla/4.0+(compatible;+MSIE+6.0;+windows+NT+5.1;+SV1;+Avant+Browser;+.NET+CLR+1.1.
2007-01-22 15:42:36 w3svc1 172.16.28.102 GET /development/index.asp - 80 - 172.16.28
Mozilla/4.0+(compatible;+MSIE+6.0;+windows+NT+5.1;+SV1;+Avant+Browser;+.NET+CLR+1.1.
2007-01-22 15:42:36 w3svc1 172.16.28.102 GET /development/css/olcstyle.css - 80 - 17
Mozilla/4.0+(compatible;+MSIE+6.0;+windows+NT+5.1;+SV1;+Avant+Browser;+.NET+CLR+1.1.
2007-01-22 15:42:36 w3svc1 172.16.28.102 GET /favicon.ico - 80 - 172.16.28.80 Avant+
2007-01-22 15:42:36 w3svc1 172.16.28.102 GET /development/css/dhtml_horiz.css - 80 -
Mozilla/4.0+(compatible;+MSIE+6.0;+windows+NT+5.1;+SV1;+Avant+Browser;+.NET+CLR+1.1.
2007-01-22 15:42:36 w3svc1 172.16.28.102 GET /development/images/index_01.jpg - 80 -
Mozilla/4.0+(compatible;+MSIE+6.0;+windows+NT+5.1;+SV1;+Avant+Browser;+.NET+CLR+1.1.
2007-01-22 15:42:36 w3svc1 172.16.28.102 GET /development/images/index_02.jpg - 80 -
Mozilla/4.0+(compatible;+MSIE+6.0;+windows+NT+5.1;+SV1;+Avant+Browser;+.NET+CLR+1.1.
2007-01-22 15:42:36 w3svc1 172.16.28.102 GET /development/images/index_03.jpg - 80 -
Mozilla/4.0+(compatible;+MSIE+6.0;+windows+NT+5.1;+SV1;+Avant+Browser;+.NET+CLR+1.1.
2007-01-22 15:42:36 w3svc1 172.16.28.102 GET /development/images/index_04.jpg - 80 -
Mozilla/4.0+(compatible;+MSIE+6.0;+windows+NT+5.1;+SV1;+Avant+Browser;+.NET+CLR+1.1.
2007-01-22 15:42:36 w3svc1 172.16.28.102 GET /development/images/index_05.jpg - 80 -
Mozilla/4.0+(compatible;+MSIE+6.0;+windows+NT+5.1;+SV1;+Avant+Browser;+.NET+CLR+1.1.
2007-01-22 15:42:36 w3svc1 172.16.28.102 GET /development/images/index_06.jpg - 80 -
Mozilla/4.0+(compatible;+MSIE+6.0;+windows+NT+5.1;+SV1;+Avant+Browser;+.NET+CLR+1.1.
2007-01-22 15:42:36 w3svc1 172.16.28.102 GET /development/images/index_07.jpg - 80 -
Mozilla/4.0+(compatible;+MSIE+6.0;+windows+NT+5.1;+SV1;+Avant+Browser;+.NET+CLR+1.1.
2007-01-22 15:42:36 w3svc1 172.16.28.102 GET /development/images/index_08.jpg - 80 -
Mozilla/4.0+(compatible;+MSIE+6.0;+windows+NT+5.1;+SV1;+Avant+Browser;+.NET+CLR+1.1.
2007-01-22 15:42:36 w3svc1 172.16.28.102 GET /development/script/dhtml.js - 80 - 172
Mozilla/4.0+(compatible;+MSIE+6.0;+windows+NT+5.1;+SV1;+Avant+Browser;+.NET+CLR+1.1.
2007-01-22 15:42:36 w3svc1 172.16.28.102 GET /development/images/greenArrow.jpg - 80
Mozilla/4.0+(compatible;+MSIE+6.0;+windows+NT+5.1;+SV1;+Avant+Browser;+.NET+CLR+1.1.
2007-01-22 15:42:36 w3svc1 172.16.28.102 GET /development/images/board_01.jpg - 80 -
Mozilla/4.0+(compatible;+MSIE+6.0;+windows+NT+5.1;+SV1;+Avant+Browser;+.NET+CLR+1.1.
2007-01-22 15:42:36 w3svc1 172.16.28.102 GET /development/images/board_02.jpg - 80 -
Mozilla/4.0+(compatible;+MSIE+6.0;+windows+NT+5.1;+SV1;+Avant+Browser;+.NET+CLR+1.1.
2007-01-22 15:42:36 w3svc1 172.16.28.102 GET /development/images/board_03.jpg - 80 -
Mozilla/4.0+(compatible;+MSIE+6.0;+windows+NT+5.1;+SV1;+Avant+Browser;+.NET+CLR+1.1.
```

What time standard is used by IIS as seen in the screenshot?

- A. UTC
- B. GMT



- C. TAI
- D. UT

**Answer:** A

#### NEW QUESTION 287

- (Exam Topic 2)

Casey has acquired data from a hard disk in an open source acquisition format that allows her to generate compressed or uncompressed image files. What format did she use?

- A. Portable Document Format
- B. Advanced Forensics Format (AFF)
- C. Proprietary Format
- D. Raw Format

**Answer:** B

#### NEW QUESTION 292

- (Exam Topic 2)

While searching through a computer under investigation, you discover numerous files that appear to have had the first letter of the file name replaced by the hex code byte 5h. What does this indicate on the computer?

- A. The files have been marked as hidden
- B. The files have been marked for deletion
- C. The files are corrupt and cannot be recovered
- D. The files have been marked as read-only

**Answer:** B

#### NEW QUESTION 296

- (Exam Topic 2)

What advantage does the tool Evidor have over the built-in Windows search?

- A. It can find deleted files even after they have been physically removed
- B. It can find bad sectors on the hard drive
- C. It can search slack space
- D. It can find files hidden within ADS

**Answer:** C

#### NEW QUESTION 301

- (Exam Topic 2)

When investigating a wireless attack, what information can be obtained from the DHCP logs?

- A. The operating system of the attacker and victim computers
- B. IP traffic between the attacker and the victim
- C. MAC address of the attacker
- D. If any computers on the network are running in promiscuous mode

**Answer:** C

#### NEW QUESTION 302

- (Exam Topic 2)

Who is responsible for the following tasks?

- A. Non-forensics staff
- B. Lawyers
- C. System administrators
- D. Local managers or other non-forensic staff

**Answer:** A

#### NEW QUESTION 304

- (Exam Topic 2)

When marking evidence that has been collected with the aa/ddmmyy/nnnn/zz format, what does the nnn denote?

- A. The year the evidence was taken
- B. The sequence number for the parts of the same exhibit
- C. The initials of the forensics analyst
- D. The sequential number of the exhibits seized

**Answer:** D

#### NEW QUESTION 308

- (Exam Topic 2)

Which of the following files stores information about local Dropbox installation and account, email IDs linked with the account, current version/build for the local application, the host\_id, and local path information?

- A. host.db
- B. sigstore.db
- C. config.db
- D. filecache.db

**Answer: C**

#### NEW QUESTION 312

- (Exam Topic 2)

The process of restarting a computer that is already turned on through the operating system is called?

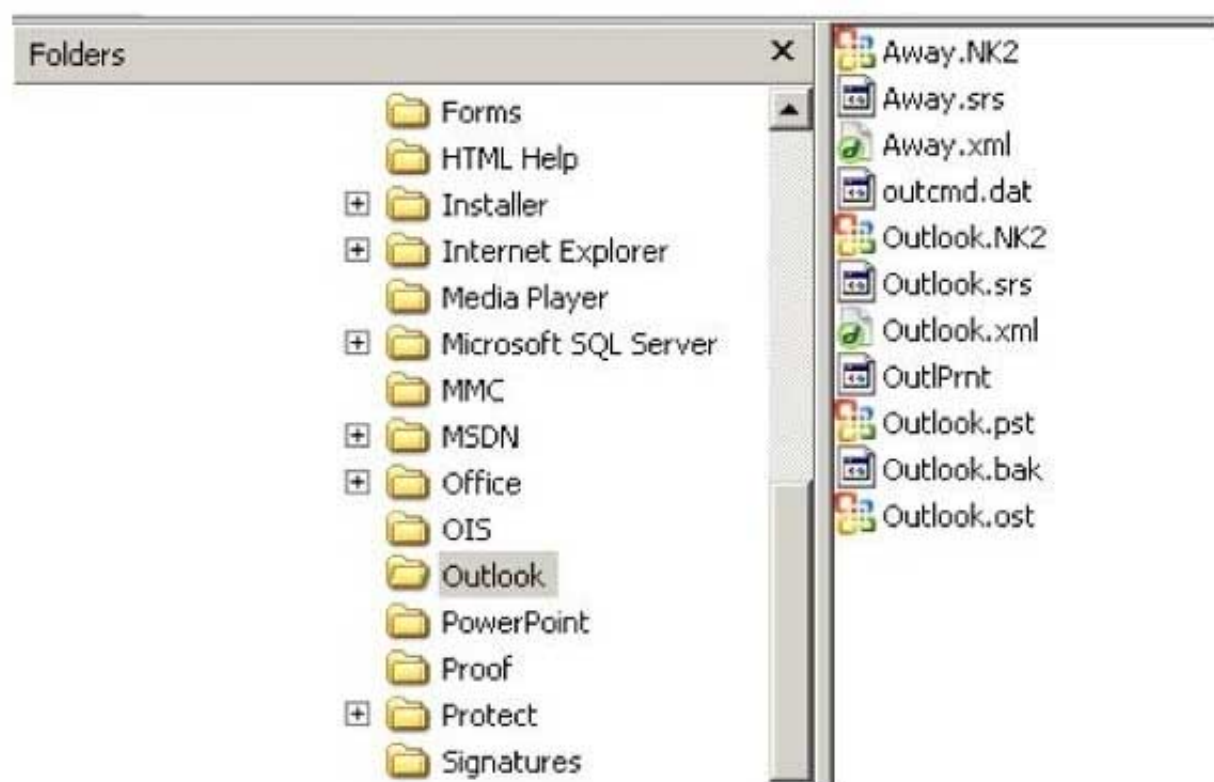
- A. Warm boot
- B. Ice boot
- C. Hot Boot
- D. Cold boot

**Answer: A**

#### NEW QUESTION 314

- (Exam Topic 2)

In the following directory listing,



Which file should be used to restore archived email messages for someone using Microsoft Outlook?

- A. Outlook bak
- B. Outlook ost
- C. Outlook NK2
- D. Outlook pst

**Answer: D**

#### NEW QUESTION 319

- (Exam Topic 2)

In Windows Security Event Log, what does an event id of 530 imply?

- A. Logon Failure – Unknown user name or bad password
- B. Logon Failure – User not allowed to logon at this computer
- C. Logon Failure – Account logon time restriction violation
- D. Logon Failure – Account currently disabled

**Answer: C**

#### NEW QUESTION 323

- (Exam Topic 2)

An expert witness is a \_\_\_\_\_ who is normally appointed by a party to assist the formulation and preparation of a party's claim or defense.

- A. Expert in criminal investigation
- B. Subject matter specialist
- C. Witness present at the crime scene
- D. Expert law graduate appointed by attorney

**Answer: B**



#### NEW QUESTION 327

- (Exam Topic 2)

Which of the following options will help users to enable or disable the last access time on a system running Windows 10 OS?

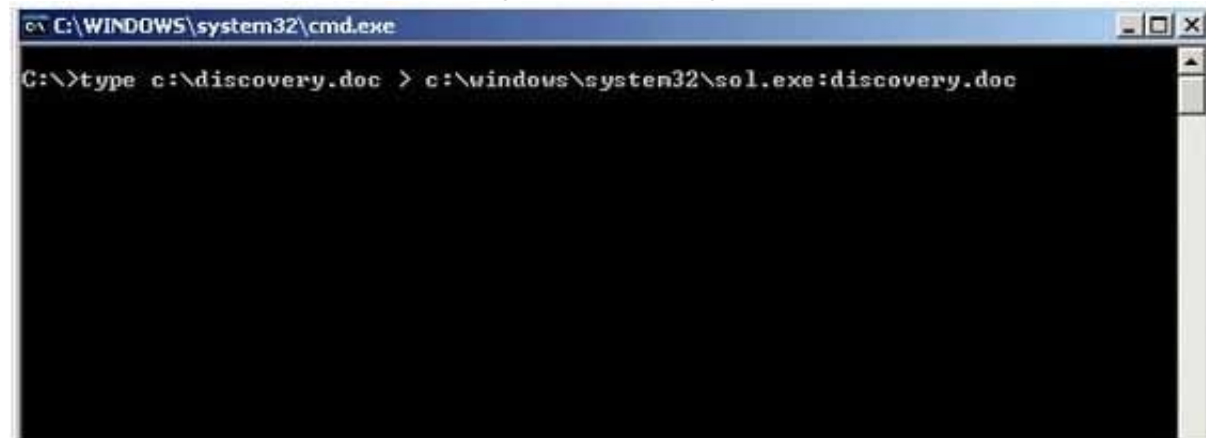
- A. wmic service
- B. Reg.exe
- C. fsutil
- D. Devcon

**Answer:** C

#### NEW QUESTION 330

- (Exam Topic 2)

What feature of Windows is the following command trying to utilize?



- A. White space
- B. AFS
- C. ADS
- D. Slack file

**Answer:** C

#### NEW QUESTION 333

- (Exam Topic 2)

What is the slave device connected to the secondary IDE controller on a Linux OS referred to?

- A. hda
- B. hdd
- C. hdb
- D. hdc

**Answer:** B

#### NEW QUESTION 335

- (Exam Topic 2)

Smith, a forensic examiner, was analyzing a hard disk image to find and acquire deleted sensitive files. He stumbled upon a \$Recycle.Bin folder in the root directory of the disk. Identify the operating system in use.

- A. Windows 98
- B. Linux
- C. Windows 8.1
- D. Windows XP

**Answer:** D

#### NEW QUESTION 336

- (Exam Topic 2)

If a PDA is seized in an investigation while the device is turned on, what would be the proper procedure?

- A. Keep the device powered on
- B. Turn off the device immediately
- C. Remove the battery immediately
- D. Remove any memory cards immediately

**Answer:** A

#### NEW QUESTION 341

- (Exam Topic 2)

What is one method of bypassing a system BIOS password?

- A. Removing the processor
- B. Removing the CMOS battery
- C. Remove all the system memory
- D. Login to Windows and disable the BIOS password

**Answer:** B

**NEW QUESTION 346**

- (Exam Topic 2)

When a user deletes a file or folder, the system stores complete path including the original filename in a special hidden file called "INFO2" in the Recycled folder. If the INFO2 file is deleted, it is recovered when you \_\_\_\_\_ .

- A. Undo the last action performed on the system
- B. Reboot Windows
- C. Use a recovery tool to undelete the file
- D. Download the file from Microsoft website

**Answer:** A

**NEW QUESTION 351**

- (Exam Topic 2)

Ivanovich, a forensics investigator, is trying to extract complete information about running processes from a system. Where should he look apart from the RAM and virtual memory?

- A. Swap space
- B. Application data
- C. Files and documents
- D. Slack space

**Answer:** A

**NEW QUESTION 354**

- (Exam Topic 2)

Which of the following tasks DOES NOT come under the investigation phase of a cybercrime forensics investigation case?

- A. Data collection
- B. Secure the evidence
- C. First response
- D. Data analysis

**Answer:** C

**NEW QUESTION 358**

- (Exam Topic 2)

Davidson Trucking is a small transportation company that has three local offices in Detroit Michigan. Ten female employees that work for the company have gone to an attorney reporting that male employees repeatedly harassed them and that management did nothing to stop the problem. Davidson has employee policies that outline all company guidelines, including awareness on harassment and how it will not be tolerated. When the case is brought to court, whom should the prosecuting attorney call upon for not upholding company policy?

- A. IT personnel
- B. Employees themselves
- C. Supervisors
- D. Administrative assistant in charge of writing policies

**Answer:** C

**NEW QUESTION 360**

- (Exam Topic 2)

What is the first step taken in an investigation for laboratory forensic staff members?

- A. Packaging the electronic evidence
- B. Securing and evaluating the electronic crime scene
- C. Conducting preliminary interviews
- D. Transporting the electronic evidence

**Answer:** B

**NEW QUESTION 365**

- (Exam Topic 2)

A master boot record (MBR) is the first sector ("sector zero") of a data storage device. What is the size of MBR?

- A. Depends on the capacity of the storage device
- B. 1048 Bytes
- C. 4092 Bytes
- D. 512 Bytes

**Answer:** D

**NEW QUESTION 370**

- (Exam Topic 2)

In the following email header, where did the email first originate from?

```
Microsoft Mail Internet Headers Version 2.0
Received: from smtp1.somedomain.com ([199.190.129.133]) by somedomain.com
with Microsoft SMTPSVC(6.0.3790.1830);
    Fri, 1 Jun 2007 09:43:08 -0500
Received: from david1.state.us.gov.us (david1.state.ok.gov [172.16.28.115])
    by smtp1.somedomain.com (8.13.1/8.12.11) with ESMTP id 151efceh032241
    for <someone@somedomain.com>; Fri, 1 Jun 2007 09:41:13 -0500
Received: from simon1.state.ok.gov.us ([172.18.0.199]) by
david1.state.ok.gov.us with Microsoft SMTPSVC(6.0.3790.1830);
    Fri, 1 Jun 2007 09:41:13 -0500
X-Ninja-PIM: Scanned by Ninja
X-Ninja-AttachmentFiltering: (no action)
X-MimeOLE: Produced By Microsoft Exchange V6.5.7235.2
Content-Class: urn:content-classes:message
Return-Receipt-To: "Johnson, Jimmy" <jimmy@somewhereelse.com>
MIME-version: 1.0
```

- A. Somedomain.com
- B. Smtpl.somedomain.com
- C. Simon1.state.ok.gov.us
- D. David1.state.ok.gov.us

**Answer: C**

#### NEW QUESTION 375

- (Exam Topic 2)

Which of the following stages in a Linux boot process involve initialization of the system's hardware?

- A. BIOS Stage
- B. Bootloader Stage
- C. BootROM Stage
- D. Kernel Stage

**Answer: A**

#### NEW QUESTION 376

- (Exam Topic 2)

Which of the following acts as a network intrusion detection system as well as network intrusion prevention system?

- A. Accunetix
- B. Nikto
- C. Snort
- D. Kismet

**Answer: C**

#### NEW QUESTION 381

- (Exam Topic 2)

When is it appropriate to use computer forensics?

- A. If copyright and intellectual property theft/misuse has occurred
- B. If employees do not care for their boss management techniques
- C. If sales drop off for no apparent reason for an extended period of time
- D. If a financial institution is burglarized by robbers

**Answer: A**

#### NEW QUESTION 383

- (Exam Topic 2)

Which of the following tool captures and allows you to interactively browse the traffic on a network?

- A. Security Task Manager
- B. Wireshark
- C. ThumbsDisplay
- D. RegScanner

**Answer: B**

#### NEW QUESTION 387

- (Exam Topic 2)

You have been given the task to investigate web attacks on a Windows-based server. Which of the following commands will you use to look at the sessions the machine has opened with other systems?

- A. Net sessions
- B. Net config
- C. Net share
- D. Net use

**Answer: D**

#### NEW QUESTION 390

- (Exam Topic 2)

What does 254 represent in ICCID 89254021520014515744?

- A. Industry Identifier Prefix
- B. Country Code
- C. Individual Account Identification Number
- D. Issuer Identifier Number

**Answer:** B

#### NEW QUESTION 393

- (Exam Topic 2)

Harold is a computer forensics investigator working for a consulting firm out of Atlanta Georgia. Harold is called upon to help with a corporate espionage case in Miami Florida. Harold assists in the investigation by pulling all the data from the computers allegedly used in the illegal activities. He finds that two suspects in the company were stealing sensitive corporate information and selling it to competing companies. From the email and instant messenger logs recovered, Harold has discovered that the two employees notified the buyers by writing symbols on the back of specific stop signs. This way, the buyers knew when and where to meet with the alleged suspects to buy the stolen material. What type of steganography did these two suspects use?

- A. Text semagram
- B. Visual semagram
- C. Grill cipher
- D. Visual cipher

**Answer:** B

#### NEW QUESTION 395

- (Exam Topic 2)

Steven has been given the task of designing a computer forensics lab for the company he works for. He has found documentation on all aspects of how to design a lab except the number of exits needed. How many exits should Steven include in his design for the computer forensics lab?

- A. Three
- B. One
- C. Two
- D. Four

**Answer:** B

#### NEW QUESTION 399

- (Exam Topic 2)

When should an MD5 hash check be performed when processing evidence?

- A. After the evidence examination has been completed
- B. On an hourly basis during the evidence examination
- C. Before and after evidence examination
- D. Before the evidence examination has been completed

**Answer:** C

#### NEW QUESTION 402

- (Exam Topic 2)

Charles has accidentally deleted an important file while working on his Mac computer. He wants to recover the deleted file as it contains some of his crucial business secrets. Which of the following tool will help Charles?

- A. Xplico
- B. Colasoft's Capsa
- C. FileSalvage
- D. DriveSpy

**Answer:** C

#### NEW QUESTION 406

- (Exam Topic 2)

What is the smallest physical storage unit on a hard drive?

- A. Track
- B. Cluster
- C. Sector
- D. Platter

**Answer:** C

#### NEW QUESTION 408

- (Exam Topic 2)

At what layer does a cross site scripting attack occur on?

- A. Presentation
- B. Application
- C. Session
- D. Data Link

**Answer:** B

#### NEW QUESTION 411

- (Exam Topic 2)

A forensics investigator is searching the hard drive of a computer for files that were recently moved to the Recycle Bin. He searches for files in C:\RECYCLED using a command line tool but does not find anything. What is the reason for this?

- A. He should search in C:\Windows\System32\RECYCLED folder
- B. The Recycle Bin does not exist on the hard drive
- C. The files are hidden and he must use switch to view them
- D. Only FAT system contains RECYCLED folder and not NTFS

**Answer:** C

#### NEW QUESTION 414

- (Exam Topic 2)

When marking evidence that has been collected with the “aaa/ddmmyy/nnnn/zz” format, what does the “nnnn” denote?

- A. The initials of the forensics analyst
- B. The sequence number for the parts of the same exhibit
- C. The year the evidence was taken
- D. The sequential number of the exhibits seized by the analyst

**Answer:** D

#### NEW QUESTION 416

- (Exam Topic 2)

What method of copying should always be performed first before carrying out an investigation?

- A. Parity-bit copy
- B. Bit-stream copy
- C. MS-DOS disc copy
- D. System level copy

**Answer:** B

#### NEW QUESTION 419

- (Exam Topic 2)

Heather, a computer forensics investigator, is assisting a group of investigators working on a large computer fraud case involving over 20 people. These 20 people, working in different offices, allegedly siphoned off money from many different client accounts. Heather's responsibility is to find out how the accused people communicated between each other. She has searched their email and their computers and has not found any useful evidence. Heather then finds some possibly useful evidence under the desk of one of the accused.

In an envelope she finds a piece of plastic with numerous holes cut out of it. Heather then finds the same exact piece of plastic with holes at many of the other accused people's desks. Heather believes that the 20 people involved in the case were using a cipher to send secret messages in between each other. What type of cipher was used by the accused in this case?

- A. Grill cipher
- B. Null cipher
- C. Text semagram
- D. Visual semagram

**Answer:** A

#### NEW QUESTION 421

- (Exam Topic 2)

Which of the following is a record of the characteristics of a file system, including its size, the block size, the empty and the filled blocks and their respective counts, the size and location of the inode tables, the disk block map and usage information, and the size of the block groups?

- A. Inode bitmap block
- B. Superblock
- C. Block bitmap block
- D. Data block

**Answer:** B

#### NEW QUESTION 423

- (Exam Topic 2)

An on-site incident response team is called to investigate an alleged case of computer tampering within their company. Before proceeding with the investigation, the CEO informs them that the incident will be classified as low level. How long will the team have to respond to the incident?

- A. One working day
- B. Two working days

- C. Immediately
- D. Four hours

**Answer:** A

#### NEW QUESTION 425

- (Exam Topic 2)

Which program is the bootloader when Windows XP starts up?

- A. KERNEL.EXE
- B. NTLDR
- C. LOADER
- D. LILO

**Answer:** B

#### NEW QUESTION 429

- (Exam Topic 2)

Which forensic investigating concept trails the whole incident from how the attack began to how the victim was affected?

- A. Point-to-point
- B. End-to-end
- C. Thorough
- D. Complete event analysis

**Answer:** B

#### NEW QUESTION 433

- (Exam Topic 2)

Shane has started the static analysis of a malware and is using the tool ResourcesExtract to find more details of the malicious program. What part of the analysis is he performing?

- A. Identifying File Dependencies
- B. Strings search
- C. Dynamic analysis
- D. File obfuscation

**Answer:** B

#### NEW QUESTION 435

- (Exam Topic 2)

Daryl, a computer forensics investigator, has just arrived at the house of an alleged computer hacker. Daryl takes pictures and tags all computer and peripheral equipment found in the house. Daryl packs all the items found in his van and takes them back to his lab for further examination. At his lab, Michael his assistant helps him with the investigation. Since Michael is still in training, Daryl supervises all of his work very carefully. Michael is not quite sure about the procedures to copy all the data off the computer and peripheral devices. How many data acquisition tools should Michael use when creating copies of the evidence for the investigation?

- A. Two
- B. One
- C. Three
- D. Four

**Answer:** A

#### NEW QUESTION 439

- (Exam Topic 2)

Which of the following technique creates a replica of an evidence media?

- A. Data Extraction
- B. Backup
- C. Bit Stream Imaging
- D. Data Deduplication

**Answer:** C

#### NEW QUESTION 443

- (Exam Topic 2)

Which of the following file contains the traces of the applications installed, run, or uninstalled from a system?

- A. Shortcut Files
- B. Virtual files
- C. Prefetch Files
- D. Image Files

**Answer:** A



**NEW QUESTION 446**

- (Exam Topic 2)

What layer of the OSI model do TCP and UDP utilize?

- A. Data Link
- B. Network
- C. Transport
- D. Session

**Answer:** C

**NEW QUESTION 449**

- (Exam Topic 2)

What type of attack sends spoofed UDP packets (instead of ping packets) with a fake source address to the IP broadcast address of a large network?

- A. Fraggle
- B. Smurf scan
- C. SYN flood
- D. Teardrop

**Answer:** A

**NEW QUESTION 453**

- (Exam Topic 2)

Which among the following search warrants allows the first responder to get the victim's computer information such as service records, billing records, and subscriber information from the service provider?

- A. Citizen Informant Search Warrant
- B. Electronic Storage Device Search Warrant
- C. John Doe Search Warrant
- D. Service Provider Search Warrant

**Answer:** B

**NEW QUESTION 455**

- (Exam Topic 2)

Which of the following Event Correlation Approach is an advanced correlation method that assumes and predicts what an attacker can do next after the attack by studying the statistics and probability and uses only two variables?

- A. Bayesian Correlation
- B. Vulnerability-Based Approach
- C. Rule-Based Approach
- D. Route Correlation

**Answer:** A

**NEW QUESTION 457**

- (Exam Topic 2)

Jack Smith is a forensics investigator who works for Mason Computer Investigation Services. He is investigating a computer that was infected by Ramen Virus.

```
C:\WINDOWS\system32\cmd.exe

C:\>netstat -an

Active Connections

Proto Local Address          Foreign Address
TCP   0.0.0.0:135             0.0.0.0:0
TCP   0.0.0.0:242             0.0.0.0:0
TCP   0.0.0.0:445             0.0.0.0:0
TCP   0.0.0.0:990             0.0.0.0:0
TCP   0.0.0.0:2584            0.0.0.0:0
TCP   0.0.0.0:2585            0.0.0.0:0
TCP   0.0.0.0:2967            0.0.0.0:0
TCP   0.0.0.0:3389            0.0.0.0:0
TCP   0.0.0.0:12174           0.0.0.0:0
TCP   0.0.0.0:38292           0.0.0.0:0
TCP   127.0.0.1:242           127.0.0.1:1042
TCP   127.0.0.1:1042          127.0.0.1:242
TCP   127.0.0.1:1044          0.0.0.0:0
TCP   127.0.0.1:1046          0.0.0.0:0
TCP   127.0.0.1:1078          0.0.0.0:0
TCP   127.0.0.1:2584          127.0.0.1:2909
TCP   127.0.0.1:2909          127.0.0.1:2584
TCP   127.0.0.1:5679          0.0.0.0:0
TCP   127.0.0.1:7438          0.0.0.0:0
TCP   172.16.28.75:139        0.0.0.0:0
TCP   172.16.28.75:1067       172.16.28.102:445
TCP   172.16.28.75:1071       172.16.28.103:139
TCP   172.16.28.75:1116       172.16.28.102:1026
TCP   172.16.28.75:1135       172.16.28.101:389
TCP   172.16.28.75:1138       172.16.28.104:445
TCP   172.16.28.75:1148       172.16.28.101:389
TCP   172.16.28.75:1610       172.16.28.101:139
TCP   172.16.28.75:2589       172.16.28.101:389
TCP   172.16.28.75:2793       172.16.28.106:445
TCP   172.16.28.75:3801       172.16.28.104:1148
TCP   172.16.28.75:3890       172.16.28.104:135
TCP   172.16.28.75:3891       172.16.28.104:1056
TCP   172.16.28.75:3892       172.16.28.104:1155
TCP   172.16.28.75:3893       172.16.28.102:135
TCP   172.16.28.75:3896       172.16.28.101:135
TCP   172.16.28.75:3899       172.16.28.104:135
TCP   172.16.28.75:3900       172.16.28.104:1056
TCP   172.16.28.75:3901       172.16.28.104:1155
```

He runs the netstat command on the machine to see its current connections. In the following screenshot, what do the 0.0.0.0 IP addresses signify?

- A. Those connections are established
- B. Those connections are in listening mode
- C. Those connections are in closed/waiting mode
- D. Those connections are in timed out/waiting mode

Answer: B

#### NEW QUESTION 462

- (Exam Topic 2)

Jason discovered a file named \$RIYG6VR.doc in the C:\\$Recycle.Bin\<USER SID>\ while analyzing a hard disk image for the deleted data. What inferences can he make from the file name?

- A. It is a doc file deleted in seventh sequential order
- B. RIYG6VR.doc is the name of the doc file deleted from the system
- C. It is file deleted from R drive
- D. It is a deleted doc file

Answer: D

#### NEW QUESTION 465

- (Exam Topic 2)

What stage of the incident handling process involves reporting events?

- A. Containment
- B. Follow-up
- C. Identification
- D. Recovery

Answer: C

#### NEW QUESTION 468

- (Exam Topic 2)

Why is it still possible to recover files that have been emptied from the Recycle Bin on a Windows computer?

- A. The data is still present until the original location of the file is used

- B. The data is moved to the Restore directory and is kept there indefinitely
- C. The data will reside in the L2 cache on a Windows computer until it is manually deleted
- D. It is not possible to recover data that has been emptied from the Recycle Bin

**Answer:** A

#### NEW QUESTION 472

- (Exam Topic 2)

When a router receives an update for its routing table, what is the metric value change to that path?

- A. Increased by 2
- B. Decreased by 1
- C. Increased by 1
- D. Decreased by 2

**Answer:** C

#### NEW QUESTION 474

- (Exam Topic 2)

Which of the following Event Correlation Approach checks and compares all the fields systematically and intentionally for positive and negative correlation with each other to determine the correlation across one or multiple fields?

- A. Rule-Based Approach
- B. Automated Field Correlation
- C. Field-Based Approach
- D. Graph-Based Approach

**Answer:** B

#### NEW QUESTION 479

- (Exam Topic 2)

When using an iPod and the host computer is running Windows, what file system will be used?

- A. iPod+
- B. HFS
- C. FAT16
- D. FAT32

**Answer:** D

#### NEW QUESTION 483

- (Exam Topic 2)

Bob has encountered a system crash and has lost vital data stored on the hard drive of his Windows computer. He has no cloud storage or backup hard drives. he wants to recover all those data, which includes his personal photos, music, documents, videos, official email, etc. Which of the following tools shall resolve Bob's purpose?

- A. Colasoft's Capsa
- B. Recuva
- C. Cain & Abel
- D. Xplico

**Answer:** D

#### NEW QUESTION 486

- (Exam Topic 2)

What hashing method is used to password protect Blackberry devices?

- A. AES
- B. RC5
- C. MD5
- D. SHA-1

**Answer:** D

#### NEW QUESTION 488

- (Exam Topic 2)

Watson, a forensic investigator, is examining a copy of an ISO file stored in CDFS format. What type of evidence is this?

- A. Data from a CD copied using Windows
- B. Data from a CD copied using Mac-based system
- C. Data from a DVD copied using Windows system
- D. Data from a CD copied using Linux system

**Answer:** A

#### NEW QUESTION 493

- (Exam Topic 2)

When investigating a computer forensics case where Microsoft Exchange and Blackberry Enterprise server are used, where would investigator need to search to find email sent from a Blackberry device?

- A. RIM Messaging center
- B. Blackberry Enterprise server
- C. Microsoft Exchange server
- D. Blackberry desktop redirector

**Answer:** C

#### NEW QUESTION 496

- (Exam Topic 2)

Netstat is a tool for collecting information regarding network connections. It provides a simple view of TCP and UDP connections, and their state and network traffic statistics. Which of the following commands shows you the TCP and UDP network connections, listening ports, and the identifiers?

- A. netstat – r
- B. netstat – ano
- C. netstat – b
- D. netstat – s

**Answer:** B

#### NEW QUESTION 499

- (Exam Topic 1)

You have been asked to investigate the possibility of computer fraud in the finance department of a company. It is suspected that a staff member has been committing finance fraud by printing cheques that have not been authorized. You have exhaustively searched all data files on a bitmap image of the target computer, but have found no evidence. You suspect the files may not have been saved. What should you examine next in this case?

- A. The registry
- B. The swap file
- C. The recycle bin
- D. The metadata

**Answer:** B

#### NEW QUESTION 500

- (Exam Topic 1)

When examining a hard disk without a write-blocker, you should not start windows because Windows will write data to the:

- A. Recycle Bin
- B. MSDOS.sys
- C. BIOS
- D. Case files

**Answer:** A

#### NEW QUESTION 505

- (Exam Topic 1)

Corporate investigations are typically easier than public investigations because:

- A. the users have standard corporate equipment and software
- B. the investigator does not have to get a warrant
- C. the investigator has to get a warrant
- D. the users can load whatever they want on their machines

**Answer:** B

#### NEW QUESTION 510

- (Exam Topic 1)

You are a security analyst performing a penetration tests for a company in the Midwest. After some initial reconnaissance, you discover the IP addresses of some Cisco routers used by the company. You type in the following URL that includes the IP address of one of the routers:

`http://172.168.4.131/level/99/exec/show/config`

After typing in this URL, you are presented with the entire configuration file for that router. What have you discovered?

- A. HTTP Configuration Arbitrary Administrative Access Vulnerability
- B. HTML Configuration Arbitrary Administrative Access Vulnerability
- C. Cisco IOS Arbitrary Administrative Access Online Vulnerability
- D. URL Obfuscation Arbitrary Administrative Access Vulnerability

**Answer:** A

#### NEW QUESTION 511

- (Exam Topic 1)

Harold is a security analyst who has just run the `rdisk /s` command to grab the backup SAM files on a computer. Where should Harold navigate on the computer to find the file?

- A. %systemroot%\system32\LSA
- B. %systemroot%\system32\drivers\etc
- C. %systemroot%\repair
- D. %systemroot%\LSA

**Answer:** C

#### NEW QUESTION 516

- (Exam Topic 1)

You work as a penetration tester for Hammond Security Consultants. You are currently working on a contract for the state government of California. Your next step is to initiate a DoS attack on their network. Why would you want to initiate a DoS attack on a system you are testing?

- A. Show outdated equipment so it can be replaced
- B. List weak points on their network
- C. Use attack as a launching point to penetrate deeper into the network
- D. Demonstrate that no system can be protected against DoS attacks

**Answer:** B

#### NEW QUESTION 521

- (Exam Topic 1)

During the course of an investigation, you locate evidence that may prove the innocence of the suspect of the investigation. You must maintain an unbiased opinion and be objective in your entire fact finding process. Therefore, you report this evidence. This type of evidence is known as:

- A. Inculpatory evidence
- B. Mandatory evidence
- C. Exculpatory evidence
- D. Terrible evidence

**Answer:** C

#### NEW QUESTION 522

- (Exam Topic 1)

When you are running a vulnerability scan on a network and the IDS cuts off your connection, what type of IDS is being used?

- A. Passive IDS
- B. Active IDS
- C. Progressive IDS
- D. NIPS

**Answer:** B

#### NEW QUESTION 524

- (Exam Topic 1)

Windows identifies which application to open a file with by examining which of the following?

- A. The File extension
- B. The file attributes
- C. The file Signature at the end of the file
- D. The file signature at the beginning of the file

**Answer:** A

#### NEW QUESTION 526

- (Exam Topic 1)

From the following spam mail header, identify the host IP that sent this spam? From jie02@netvigator.com jie02@netvigator.com Tue Nov 27 17:27:11 2001  
Received: from viruswall.ie.cuhk.edu.hk (viruswall [137.189.96.52]) by eng.ie.cuhk.edu.hk (8.11.6/8.11.6) with ESMTP id fAR9RAP23061 for ; Tue, 27 Nov 2001 17:27:10 +0800 (HKT)  
Received: from mydomain.com (pcd249020.netvigator.com [203.218.39.20]) by viruswall.ie.cuhk.edu.hk (8.12.1/8.12.1) with SMTP id fAR9QXwZ018431 for ; Tue, 27 Nov 2001 17:26:36 +0800 (HKT)  
Message-Id: >200111270926.fAR9QXwZ018431@viruswall.ie.cuhk.edu.hk From: "china hotel web"  
To: "Shlam"  
Subject: SHANGHAI (HILTON HOTEL) PACKAGE  
Date: Tue, 27 Nov 2001 17:25:58 +0800 MIME-Version: 1.0  
X- Priority: 3 X-MSMail- Priority: Normal  
Reply-To: "china hotel web"

- A. 137.189.96.52
- B. 8.12.1.0
- C. 203.218.39.20
- D. 203.218.39.50

**Answer:** C

#### NEW QUESTION 530

- (Exam Topic 1)

The objective of this act was to protect consumers' personal financial information held by financial institutions and their service providers.



- A. Gramm-Leach-Bliley Act
- B. Sarbanes-Oxley 2002
- C. California SB 1386
- D. HIPAA

**Answer:** A

#### NEW QUESTION 535

- (Exam Topic 1)

Michael works for Kimball Construction Company as senior security analyst. As part of yearly security audit, Michael scans his network for vulnerabilities. Using Nmap, Michael conducts XMAS scan and most of the ports scanned do not give a response. In what state are these ports?

- A. Closed
- B. Open
- C. Stealth
- D. Filtered

**Answer:** B

#### NEW QUESTION 538

- (Exam Topic 1)

If an attacker's computer sends an IPID of 31400 to a zombie computer on an open port in IDLE scanning, what will be the response?

- A. The zombie will not send a response
- B. 31402
- C. 31399
- D. 31401

**Answer:** D

#### NEW QUESTION 541

- (Exam Topic 1)

What binary coding is used most often for e-mail purposes?

- A. MIME
- B. Uuencode
- C. IMAP
- D. SMTP

**Answer:** A

#### NEW QUESTION 545

- (Exam Topic 1)

Office documents (Word, Excel, PowerPoint) contain a code that allows tracking the MAC, or unique identifier, of the machine that created the document. What is that code called?

- A. the Microsoft Virtual Machine Identifier
- B. the Personal Application Protocol
- C. the Globally Unique ID
- D. the Individual ASCII String

**Answer:** C

#### NEW QUESTION 547

- (Exam Topic 1)

Printing under a Windows Computer normally requires which one of the following files types to be created?

- A. EME
- B. MEM
- C. EMF
- D. CME

**Answer:** C

#### NEW QUESTION 550

- (Exam Topic 1)

You are using DriveSpy, a forensic tool and want to copy 150 sectors where the starting sector is 1709 on the primary hard drive. Which of the following formats correctly specifies these sectors?

- A. 0:1000, 150
- B. 0:1709, 150
- C. 1:1709, 150
- D. 0:1709-1858

**Answer:** B



#### NEW QUESTION 554

- (Exam Topic 1)

You have compromised a lower-level administrator account on an Active Directory network of a small company in Dallas, Texas. You discover Domain Controllers through enumeration. You connect to one of the Domain Controllers on port 389 using ldp.exe. What are you trying to accomplish here?

- A. Poison the DNS records with false records
- B. Enumerate MX and A records from DNS
- C. Establish a remote connection to the Domain Controller
- D. Enumerate domain user accounts and built-in groups

**Answer:** D

#### NEW QUESTION 555

- (Exam Topic 1)

What does the superblock in Linux define?

- A. filesynames
- B. diskgeometr
- C. location of the firstinode
- D. available space

**Answer:** C

#### NEW QUESTION 559

- (Exam Topic 1)

In a forensic examination of hard drives for digital evidence, what type of user is most likely to have the most file slack to analyze?

- A. one who has NTFS 4 or 5 partitions
- B. one who uses dynamic swap file capability
- C. one who uses hard disk writes on IRQ 13 and 21
- D. one who has lots of allocation units per block or cluster

**Answer:** D

#### NEW QUESTION 561

- (Exam Topic 1)

What method of computer forensics will allow you to trace all ever-established user accounts on a Windows 2000 sever the course of its lifetime?

- A. forensic duplication of hard drive
- B. analysis of volatile data
- C. comparison of MD5 checksums
- D. review of SIDs in the Registry

**Answer:** C

#### NEW QUESTION 566

- (Exam Topic 1)

You are working as Computer Forensics investigator and are called by the owner of an accounting firm to investigate possible computer abuse by one of the firm's employees. You meet with the owner of the firm and discover that the company has never published a policy stating that they reserve the right to inspect their computing assets at will. What do you do?

- A. Inform the owner that conducting an investigation without a policy is not a problem because the company is privately owned
- B. Inform the owner that conducting an investigation without a policy is a violation of the 4th amendment
- C. Inform the owner that conducting an investigation without a policy is a violation of the employee's expectation of privacy
- D. Inform the owner that conducting an investigation without a policy is not a problem because a policy is only necessary for government agencies

**Answer:** C

#### NEW QUESTION 569

- (Exam Topic 1)

You just passed your ECSA exam and are about to start your first consulting job running security audits for a financial institution in Los Angeles. The IT manager of the company you will be working for tries to see if you remember your ECSA class. He asks about the methodology you will be using to test the company's network. How would you answer?

- A. Microsoft Methodology
- B. Google Methodology
- C. IBM Methodology
- D. LPT Methodology

**Answer:** D

#### NEW QUESTION 572

- (Exam Topic 1)

When investigating a Windows System, it is important to view the contents of the page or swap file because:

- A. Windows stores all of the systems configuration information in this file
- B. This is file that windows use to communicate directly with Registry

- C. A Large volume of data can exist within the swap file of which the computer user has no knowledge
- D. This is the file that windows use to store the history of the last 100 commands that were run from the command line

**Answer:** C

#### NEW QUESTION 574

- (Exam Topic 1)

The efforts to obtain information before a trial by demanding documents, depositions, questioned and answers written under oath, written requests for admissions of fact and examination of the scene is a description of what legal term?

- A. Detection
- B. Hearsay
- C. Spoliation
- D. Discovery

**Answer:** D

#### NEW QUESTION 576

- (Exam Topic 1)

What operating system would respond to the following command?

- A. Windows 95
- B. FreeBSD
- C. Windows XP
- D. Mac OS X

**Answer:** B

#### NEW QUESTION 577

- (Exam Topic 1)

George is the network administrator of a large Internet company on the west coast. Per corporate policy, none of the employees in the company are allowed to use FTP or SFTP programs without obtaining approval from the IT department. Few managers are using SFTP program on their computers. Before talking to his boss, George wants to have some proof of their activity. George wants to use Ethereal to monitor network traffic, but only SFTP traffic to and from his network. What filter should George use in Ethereal?

- A. src port 23 and dst port 23
- B. udp port 22 and host 172.16.28.1/24
- C. net port 22
- D. src port 22 and dst port 22

**Answer:** D

#### NEW QUESTION 579

- (Exam Topic 1)

When obtaining a warrant, it is important to:

- A. particularly describe the place to be searched and particularly describe the items to be seized
- B. generally describe the place to be searched and particularly describe the items to be seized
- C. generally describe the place to be searched and generally describe the items to be seized
- D. particularly describe the place to be searched and generally describe the items to be seized

**Answer:** A

#### NEW QUESTION 581

- (Exam Topic 1)

Sectors in hard disks typically contain how many bytes?

- A. 256
- B. 512
- C. 1024
- D. 2048

**Answer:** B

#### NEW QUESTION 584

- (Exam Topic 1)

What is the name of the Standard Linux Command that is also available as windows application that can be used to create bit-stream images?

- A. mcopy
- B. image
- C. MD5
- D. dd

**Answer:** D

#### NEW QUESTION 585

- (Exam Topic 1)

Which of the following file system is used by Mac OS X?

- A. EFS
- B. HFS+
- C. EXT2
- D. NFS

**Answer:** B

#### NEW QUESTION 588

- (Exam Topic 1)

The police believe that Melvin Matthew has been obtaining unauthorized access to computers belonging to numerous computer software and computer operating systems manufacturers, cellular telephone manufacturers, Internet Service Providers and Educational Institutions. They also suspect that he has been stealing, copying and misappropriating proprietary computer software belonging to the several victim companies. What is preventing the police from breaking down the suspects door and searching his home and seizing all of his computer equipment if they have not yet obtained a warrant?

- A. The Fourth Amendment
- B. The USA patriot Act
- C. The Good Samaritan Laws
- D. The Federal Rules of Evidence

**Answer:** A

#### NEW QUESTION 590

- (Exam Topic 1)

To make sure the evidence you recover and analyze with computer forensics software can be admitted in court, you must test and validate the software. What group is actively providing tools and creating procedures for testing and validating computer forensics software?

- A. Computer Forensics Tools and Validation Committee (CFTVC)
- B. Association of Computer Forensics Software Manufactures (ACFSM)
- C. National Institute of Standards and Technology (NIST)
- D. Society for Valid Forensics Tools and Testing (SVFTT)

**Answer:** C

#### NEW QUESTION 595

- (Exam Topic 1)

You are working as a Computer forensics investigator for a corporation on a computer abuse case. You discover evidence that shows the subject of your investigation is also embezzling money from the company. The company CEO and the corporate legal counsel advise you to contact law enforcement and provide them with the evidence that you have found. The law enforcement officer that responds requests that you put a network sniffer on your network and monitor all traffic to the subject's computer. You inform the officer that you will not be able to comply with that request because doing so would:

- A. Violate your contract
- B. Cause network congestion
- C. Make you an agent of law enforcement
- D. Write information to the subject's hard drive

**Answer:** C

#### NEW QUESTION 599

- (Exam Topic 1)

You are called in to assist the police in an investigation involving a suspected drug dealer. The suspects house was searched by the police after a warrant was obtained and they located a floppy disk in the suspects bedroom. The disk contains several files, but they appear to be password protected. What are two common methods used by password cracking software that you can use to obtain the password?

- A. Limited force and library attack
- B. Brute Force and dictionary Attack
- C. Maximum force and thesaurus Attack
- D. Minimum force and appendix Attack

**Answer:** B

#### NEW QUESTION 602

- (Exam Topic 1)

You work as an IT security auditor hired by a law firm in Boston to test whether you can gain access to sensitive information about the company clients. You have rummaged through their trash and found very little information. You do not want to set off any alarms on their network, so you plan on performing passive foot printing against their Web servers. What tool should you use?

- A. Ping sweep
- B. Nmap
- C. Netcraft
- D. Dig

**Answer:** C

#### NEW QUESTION 605

- (Exam Topic 1)

Jason has set up a honeypot environment by creating a DMZ that has no physical or logical access to his production network. In this honeypot, he has placed a server running Windows Active Directory. He has also placed a Web server in the DMZ that services a number of web pages that offer visitors a chance to download sensitive information by clicking on a button. A week later, Jason finds in his network logs how an intruder accessed the honeypot and downloaded sensitive information. Jason uses the logs to try and prosecute the intruder for stealing sensitive corporate information. Why will this not be viable?

- A. Entrapment
- B. Enticement
- C. Intruding into a honeypot is not illegal
- D. Intruding into a DMZ is not illegal

**Answer:** A

#### NEW QUESTION 607

- (Exam Topic 1)

Which part of the Windows Registry contains the user's password file?

- A. HKEY\_LOCAL\_MACHINE
- B. HKEY\_CURRENT\_CONFIGURATION
- C. HKEY\_USER
- D. HKEY\_CURRENT\_USER

**Answer:** A

#### NEW QUESTION 611

- (Exam Topic 1)

You have been asked to investigate after a user has reported a threatening e-mail they have received from an external source. Which of the following are you most interested in when trying to trace the source of the message?

- A. The X509 Address
- B. The SMTP reply Address
- C. The E-mail Header
- D. The Host Domain Name

**Answer:** C

#### NEW QUESTION 615

- (Exam Topic 1)

E-mail logs contain which of the following information to help you in your investigation? (Choose four.)

- A. user account that was used to send the account
- B. attachments sent with the e-mail message
- C. unique message identifier
- D. contents of the e-mail message
- E. date and time the message was sent

**Answer:** ACDE

#### NEW QUESTION 617

- (Exam Topic 1)

Meyer Electronics Systems just recently had a number of laptops stolen out of their office. On these laptops contained sensitive corporate information regarding patents and company strategies. A month after the laptops were stolen, a competing company was found to have just developed products that almost exactly duplicated products that Meyer produces. What could have prevented this information from being stolen from the laptops?

- A. EFS Encryption
- B. DFS Encryption
- C. IPS Encryption
- D. SDW Encryption

**Answer:** A

#### NEW QUESTION 619

- (Exam Topic 1)

You have used a newly released forensic investigation tool, which doesn't meet the Daubert Test, during a case. The case has ended-up in court. What argument could the defense make to weaken your case?

- A. The tool hasn't been tested by the International Standards Organization (ISO)
- B. Only the local law enforcement should use the tool
- C. The total has not been reviewed and accepted by your peers
- D. You are not certified for using the tool

**Answer:** C

#### NEW QUESTION 624

- (Exam Topic 1)

If you plan to startup a suspect's computer, you must modify the \_\_\_\_\_ to ensure that you do not contaminate or alter data on the suspect's hard drive by booting to the hard drive.

- A. deltree command
- B. CMOS
- C. Boot.sys
- D. Scandisk utility

**Answer:** C

#### NEW QUESTION 629

- (Exam Topic 1)

Frank is working on a vulnerability assessment for a company on the West coast. The company hired Frank to assess its network security through scanning, pen tests, and vulnerability assessments. After discovering numerous known vulnerabilities detected by a temporary IDS he set up, he notices a number of items that show up as unknown but Questionable in the logs. He looks up the behavior on the Internet, but cannot find anything related. What organization should Frank submit the log to find out if it is a new vulnerability or not?

- A. APIPA
- B. IANA
- C. CVE
- D. RIPE

**Answer:** C

#### NEW QUESTION 630

- (Exam Topic 1)

Hackers can gain access to Windows Registry and manipulate user passwords, DNS settings, access rights or others features that they may need in order to accomplish their objectives. One simple method for loading an application at startup is to add an entry (Key) to the following Registry Hive:

- A. HKEY\_LOCAL\_MACHINE\hardware\windows\start
- B. HKEY\_LOCAL\_USERS\Software\Microsoft\old\Version\Load
- C. HKEY\_CURRENT\_USER\Microsoft\Default
- D. HKEY\_LOCAL\_MACHINE\Software\Microsoft\CurrentVersion\Run

**Answer:** D

#### NEW QUESTION 633

- (Exam Topic 1)

After undergoing an external IT audit, George realizes his network is vulnerable to DDoS attacks. What countermeasures could he take to prevent DDoS attacks?

- A. Enable direct broadcasts
- B. Disable direct broadcasts
- C. Disable BGP
- D. Enable BGP

**Answer:** B

#### NEW QUESTION 636

- (Exam Topic 1)

Kimberly is studying to be an IT security analyst at a vocational school in her town. The school offers many different programming as well as networking languages. What networking protocol language should she learn that routers utilize?

- A. ATM
- B. UDP
- C. BPG
- D. OSPF

**Answer:** D

#### NEW QUESTION 639

- (Exam Topic 1)

If a suspect computer is located in an area that may have toxic chemicals, you must:

- A. coordinate with the HAZMAT team
- B. determine a way to obtain the suspect computer
- C. assume the suspect machine is contaminated
- D. do not enter alone

**Answer:** A

#### NEW QUESTION 640

- (Exam Topic 1)

You are running known exploits against your network to test for possible vulnerabilities. To test the strength of your virus software, you load a test network to mimic your production network. Your software successfully blocks some simple macro and encrypted viruses. You decide to really test the software by using virus code where the code rewrites itself entirely and the signatures change from child to child, but the functionality stays the same. What type of virus is this that you are testing?

- A. Polymorphic
- B. Metamorphic
- C. Oligomorph







#### NEW QUESTION 660

- (Exam Topic 1)

You are working as an independent computer forensics investigator and received a call from a systems administrator for a local school system requesting your assistance. One of the students at the local high school is suspected of downloading inappropriate images from the Internet to a PC in the Computer lab. When you arrive at the school, the systems administrator hands you a hard drive and tells you that he made a “simple backup copy” of the hard drive in the PC and put it on this drive and requests that you examine that drive for evidence of the suspected images. You inform him that a “simple backup copy” will not provide deleted files or recover file fragments.

What type of copy do you need to make to ensure that the evidence found is complete and admissible in future proceeding?

- A. Bit-stream Copy
- B. Robust Copy
- C. Full backup Copy
- D. Incremental Backup Copy

**Answer:** A

#### NEW QUESTION 664

- (Exam Topic 1)

How many sectors will a 125 KB file use in a FAT32 file system?

- A. 32
- B. 16
- C. 256
- D. 25

**Answer:** C

#### NEW QUESTION 669

- (Exam Topic 1)

When using Windows acquisitions tools to acquire digital evidence, it is important to use a well-tested hardware write-blocking device to:

- A. Automate Collection from image files
- B. Avoiding copying data from the boot partition
- C. Acquire data from host-protected area on a disk
- D. Prevent Contamination to the evidence drive

**Answer:** D

#### NEW QUESTION 674

- (Exam Topic 1)

When setting up a wireless network with multiple access points, why is it important to set each access point on a different channel?

- A. Multiple access points can be set up on the same channel without any issues
- B. Avoid over-saturation of wireless signals
- C. So that the access points will work on different frequencies
- D. Avoid cross talk

**Answer:** D

#### NEW QUESTION 675

- (Exam Topic 1)

You are carrying out the last round of testing for your new website before it goes live. The website has many dynamic pages and connects to a SQL backend that accesses your product inventory in a database. You come across a web security site that recommends inputting the following code into a search field on web pages to check for vulnerabilities: When you type this and click on search, you receive a pop-up window that says: "This is a test."

What is the result of this test?

- A. Your website is vulnerable to CSS
- B. Your website is not vulnerable
- C. Your website is vulnerable to SQL injection
- D. Your website is vulnerable to web bugs

**Answer:** A

#### NEW QUESTION 680

- (Exam Topic 1)

One technique for hiding information is to change the file extension from the correct one to one that might not be noticed by an investigator. For example, changing a .jpg extension to a .doc extension so that a picture file appears to be a document. What can an investigator examine to verify that a file has the correct extension?

- A. the File Allocation Table
- B. the file header
- C. the file footer
- D. the sector map

**Answer:** B

#### NEW QUESTION 685

- (Exam Topic 1)

You are working as an investigator for a corporation and you have just received instructions from your manager to assist in the collection of 15 hard drives that are part of an ongoing investigation.

Your job is to complete the required evidence custody forms to properly document each piece of evidence as it is collected by other members of your team. Your manager instructs you to complete one multi-evidence form for the entire case and a single-evidence form for each hard drive. How will these forms be stored to help preserve the chain of custody of the case?

A. All forms should be placed in an approved secure container because they are now primary evidence in the case.

B. The multi-evidence form should be placed in the report file and the single-evidence forms should be kept with each hard drive in an approved secure container.

C. The multi-evidence form should be placed in an approved secure container with the hard drives and the single-evidence forms should be placed in the report file.

D. All forms should be placed in the report file because they are now primary evidence in the case.

**Answer: B**

#### NEW QUESTION 686

- (Exam Topic 1)

What is a good security method to prevent unauthorized users from "tailgating"?

A. Man trap

B. Electronic combination locks

C. Pick-resistant locks

D. Electronic key systems

**Answer: A**

#### NEW QUESTION 688

- (Exam Topic 1)

George is performing security analysis for Hammond and Sons LLC. He is testing security vulnerabilities of their wireless network. He plans on remaining as "stealthy" as possible during the scan. Why would a scanner like Nessus is not recommended in this situation?

A. Nessus is too loud

B. Nessus cannot perform wireless testing

C. Nessus is not a network scanner

D. There are no ways of performing a "stealthy" wireless scan

**Answer: A**

#### NEW QUESTION 690

- (Exam Topic 1)

This organization maintains a database of hash signatures for known software.

A. International Standards Organization

B. Institute of Electrical and Electronics Engineers

C. National Software Reference Library

D. American National standards Institute

**Answer: C**

#### NEW QUESTION 691

- (Exam Topic 1)

If you see the files Zer0.tar.gz and copy.tar.gz on a Linux system while doing an investigation, what can you conclude?

A. The system files have been copied by a remote attacker

B. The system administrator has created an incremental backup

C. The system has been compromised using a t0rnrootkit

D. Nothing in particular as these can be operational files

**Answer: D**

#### NEW QUESTION 695

- (Exam Topic 1)

You are trying to locate Microsoft Outlook Web Access Default Portal using Google search on the Internet. What search string will you use to locate them?

A. allinurl:"exchange/logon.asp"

B. intitle:"exchange server"

C. locate:"logon page"

D. outlook:"search"

**Answer: A**

#### NEW QUESTION 697

- (Exam Topic 1)

Before you are called to testify as an expert, what must an attorney do first?

A. engage in damage control

B. prove that the tools you used to conduct your examination are perfect

- C. read your curriculum vitae to the jury
- D. qualify you as an expert witness

**Answer:** D

#### NEW QUESTION 699

- (Exam Topic 1)

You are working on a thesis for your doctorate degree in Computer Science. Your thesis is based on HTML, DHTML, and other web-based languages and how they have evolved over the years.

You navigate to archive.org and view the HTML code of news.com. You then navigate to the current news.com website and copy over the source code. While searching through the code, you come across something abnormal: What have you found?

- A. Web bug
- B. CGI code
- C. Trojan.downloader
- D. Blind bug

**Answer:** A

#### NEW QUESTION 700

- (Exam Topic 1)

Harold is a web designer who has completed a website for ghttech.net. As part of the maintenance agreement he signed with the client, Harold is performing research online and seeing how much exposure the site has received so far. Harold navigates to google.com and types in the following search.

link:www.ghitech.net What will this search produce?

- A. All sites that ghttech.net links to
- B. All sites that link to ghttech.net
- C. All search engines that link to .net domains
- D. Sites that contain the code: link:www.ghitech.net

**Answer:** B

#### NEW QUESTION 705

- (Exam Topic 1)

\_\_\_\_\_ is simply the application of Computer Investigation and analysis techniques in the interests of determining potential legal evidence.

- A. Network Forensics
- B. Computer Forensics
- C. Incident Response
- D. Event Reaction

**Answer:** B

#### NEW QUESTION 706

- (Exam Topic 1)

What is the target host IP in the following command?

- A. 172.16.28.95
- B. 10.10.150.1
- C. Firewall does not scan target hosts
- D. This command is using FIN packets, which cannot scan target hosts

**Answer:** A

#### NEW QUESTION 709

- (Exam Topic 1)

Simon is a former employee of Trinitron XML Inc. He feels he was wrongly terminated and wants to hack into his former company's network. Since Simon remembers some of the server names, he attempts to run the axfr and ixfr commands using DIG. What is Simon trying to accomplish here?

- A. Send DOS commands to crash the DNS servers
- B. Perform DNS poisoning
- C. Perform a zone transfer
- D. Enumerate all the users in the domain

**Answer:** C

#### NEW QUESTION 714

- (Exam Topic 1)

What does the acronym POST mean as it relates to a PC?

- A. Primary Operations Short Test
- B. PowerOn Self Test
- C. Pre Operational Situation Test
- D. Primary Operating System Test

**Answer:** B

#### NEW QUESTION 718

- (Exam Topic 1)

An "idle" system is also referred to as what?

- A. PC not connected to the Internet
- B. Zombie
- C. PC not being used
- D. Bot

**Answer:** B

#### NEW QUESTION 719

- (Exam Topic 1)

John and Hillary works at the same department in the company. John wants to find out Hillary's network password so he can take a look at her documents on the file server. He enables Lophtrcrack program to sniffing mode. John sends Hillary an email with a link to Error! Reference source not found. What information will he be able to gather from this?

- A. Hillary network username and password hash
- B. The SID of Hillary network account
- C. The SAM file from Hillary computer
- D. The network shares that Hillary has permissions

**Answer:** A

#### NEW QUESTION 721

- (Exam Topic 1)

You are conducting an investigation of fraudulent claims in an insurance company that involves complex text searches through large numbers of documents. Which of the following tools would allow you to quickly and efficiently search for a string within a file on the bitmap image of the target computer?

- A. Stringsearch
- B. grep
- C. dir
- D. vim

**Answer:** B

#### NEW QUESTION 726

- (Exam Topic 1)

Law enforcement officers are conducting a legal search for which a valid warrant was obtained.

While conducting the search, officers observe an item of evidence for an unrelated crime that was not included in the warrant. The item was clearly visible to the officers and immediately identified as evidence. What is the term used to describe how this evidence is admissible?

- A. Plain view doctrine
- B. Corpus delicti
- C. Locard Exchange Principle
- D. Ex Parte Order

**Answer:** A

#### NEW QUESTION 729

- (Exam Topic 1)

In what way do the procedures for dealing with evidence in a criminal case differ from the procedures for dealing with evidence in a civil case?

- A. evidence must be handled in the same way regardless of the type of case
- B. evidence procedures are not important unless you work for a law enforcement agency
- C. evidence in a criminal case must be secured more tightly than in a civil case
- D. evidence in a civil case must be secured more tightly than in a criminal case

**Answer:** C

#### NEW QUESTION 733

- (Exam Topic 1)

With Regard to using an Antivirus scanner during a computer forensics investigation, You should:

- A. Scan the suspect hard drive before beginning an investigation
- B. Never run a scan on your forensics workstation because it could change your systems configuration
- C. Scan your forensics workstation at intervals of no more than once every five minutes during an investigation
- D. Scan your Forensics workstation before beginning an investigation

**Answer:** D

#### NEW QUESTION 734

- (Exam Topic 1)

If you discover a criminal act while investigating a corporate policy abuse, it becomes a publicsector investigation and should be referred to law enforcement?

- A. true
- B. false

**Answer:** A

**NEW QUESTION 737**

- (Exam Topic 1)

You are assisting in the investigation of a possible Web Server Hack. The company who called you stated that customers reported to them that whenever they entered the web address of the company in their browser, what they received was a porno graphic web site. The company checked the web server and nothing appears wrong. When you type in the IP address of the web site in your browser everything appears normal. What is the name of the attack that affects the DNS cache of the name resolution servers, resulting in those servers directing users to the wrong web site?

- A. ARP Poisoning
- B. DNS Poisoning
- C. HTTP redirect attack
- D. IP Spoofing

**Answer:** B

**NEW QUESTION 740**

.....

## THANKS FOR TRYING THE DEMO OF OUR PRODUCT

Visit Our Site to Purchase the Full Set of Actual 312-49v10 Exam Questions With Answers.

We Also Provide Practice Exam Software That Simulates Real Exam Environment And Has Many Self-Assessment Features. Order the 312-49v10 Product From:

<https://www.2passeasy.com/dumps/312-49v10/>

## Money Back Guarantee

### 312-49v10 Practice Exam Features:

- \* 312-49v10 Questions and Answers Updated Frequently
- \* 312-49v10 Practice Questions Verified by Expert Senior Certified Staff
- \* 312-49v10 Most Realistic Questions that Guarantee you a Pass on Your FirstTry
- \* 312-49v10 Practice Test Questions in Multiple Choice Formats and Updatesfor 1 Year